



# Full wwPDB X-ray Structure Validation Report ⓘ

Oct 29, 2017 – 09:12 AM EDT

PDB ID : 3F8W  
Title : Crystal structure of Schistosoma mansoni purine nucleoside phosphorylase in complex with adenosine  
Authors : Pereira, H.M.; Rezende, M.M.; Garratt, R.C.; Oliva, G.  
Deposited on : unknown  
Resolution : 2.30 Å(reported)

This is a Full wwPDB X-ray Structure Validation Report for a publicly released PDB entry.

We welcome your comments at [validation@mail.wwpdb.org](mailto:validation@mail.wwpdb.org)

A user guide is available at

<http://wwpdb.org/validation/2016/XrayValidationReportHelp>

with specific help available everywhere you see the ⓘ symbol.

---

The following versions of software and data (see [references ⓘ](#)) were used in the production of this report:

MolProbity : 4.02b-467  
Mogul : 1.7.2 (RC1), CSD as538be (2017)  
Xtriage (Phenix) : 1.9-1692  
EDS : rb-20030345  
Percentile statistics : 20161228.v01 (using entries in the PDB archive December 28th 2016)  
Refmac : 5.8.0135  
CCP4 : 6.5.0  
Ideal geometry (proteins) : Engh & Huber (2001)  
Ideal geometry (DNA, RNA) : Parkinson et al. (1996)  
Validation Pipeline (wwPDB-VP) : rb-20030345

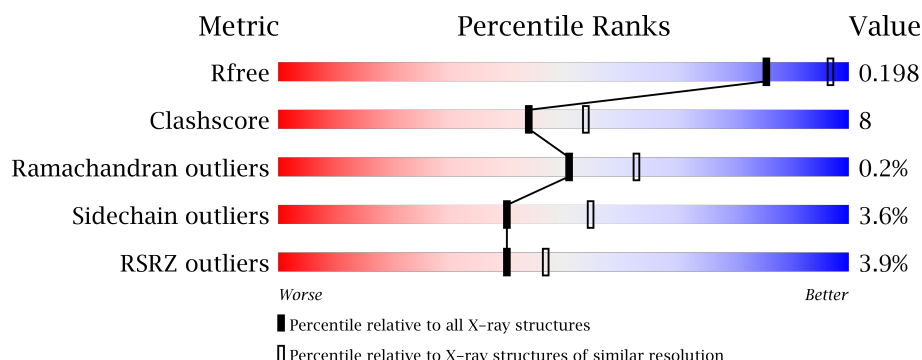
# 1 Overall quality at a glance

The following experimental techniques were used to determine the structure:

*X-RAY DIFFRACTION*

The reported resolution of this entry is 2.30 Å.

Percentile scores (ranging between 0-100) for global validation metrics of the entry are shown in the following graphic. The table shows the number of entries on which the scores are based.



Metric	Whole archive (#Entries)	Similar resolution (#Entries, resolution range(Å))
$R_{free}$	100719	4130 (2.30-2.30)
Clashscore	112137	4751 (2.30-2.30)
Ramachandran outliers	110173	4705 (2.30-2.30)
Sidechain outliers	110143	4704 (2.30-2.30)
RSRZ outliers	101464	4156 (2.30-2.30)

The table below summarises the geometric issues observed across the polymeric chains and their fit to the electron density. The red, orange, yellow and green segments on the lower bar indicate the fraction of residues that contain outliers for  $\geq 3$ , 2, 1 and 0 types of geometric quality criteria. A grey segment represents the fraction of residues that are not modelled. The numeric value for each fraction is indicated below the corresponding segment, with a dot representing fractions  $\leq 5\%$ . The upper red bar (where present) indicates the fraction of residues that have poor fit to the electron density. The numeric value is given above the bar.

Mol	Chain	Length	Quality of chain
1	A	287	<div> <div>5%</div> <div> <div></div> <div>82%</div> <div>14%</div> <div>..</div> </div> </div>
1	B	287	<div> <div>2%</div> <div> <div></div> <div>82%</div> <div>16%</div> <div>..</div> </div> </div>
1	C	287	<div> <div>4%</div> <div> <div></div> <div>84%</div> <div>12%</div> <div>..</div> </div> </div>

## 2 Entry composition [i](#)

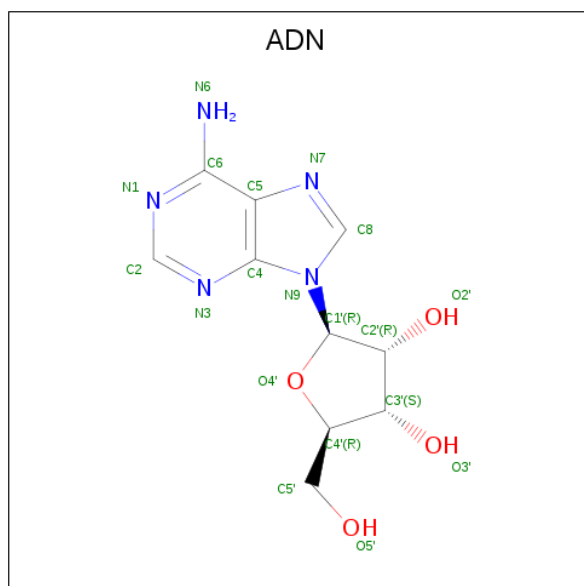
There are 5 unique types of molecules in this entry. The entry contains 6803 atoms, of which 0 are hydrogens and 0 are deuteriums.

In the tables below, the ZeroOcc column contains the number of atoms modelled with zero occupancy, the AltConf column contains the number of residues with at least one atom in alternate conformation and the Trace column contains the number of residues modelled with at most 2 atoms.

- Molecule 1 is a protein called Purine-nucleoside phosphorylase.

Mol	Chain	Residues	Atoms					ZeroOcc	AltConf	Trace
1	A	280	Total	C	N	O	S	0	1	0
			2127	1357	366	390	14			
1	B	284	Total	C	N	O	S	0	0	0
			2147	1367	369	397	14			
1	C	279	Total	C	N	O	S	0	0	0
			2111	1345	365	387	14			

- Molecule 2 is ADENOSINE (three-letter code: ADN) (formula:  $C_{10}H_{13}N_5O_4$ ).



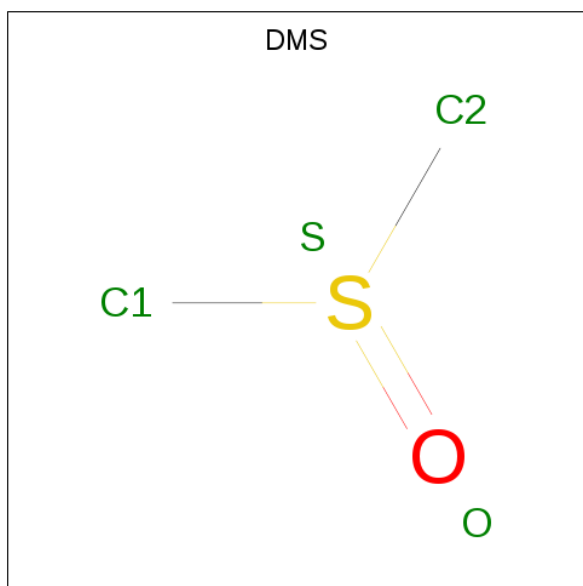
Mol	Chain	Residues	Atoms				ZeroOcc	AltConf
2	A	1	Total	C	N	O	0	0
			19	10	5	4		
2	B	1	Total	C	N	O	0	0
			19	10	5	4		
2	C	1	Total	C	N	O	0	0
			19	10	5	4		

- Molecule 3 is SULFATE ION (three-letter code: SO4) (formula: O<sub>4</sub>S).



Mol	Chain	Residues	Atoms			ZeroOcc	AltConf
3	A	1	Total	O	S	0	0
			5	4	1		
3	B	1	Total	O	S	0	0
			5	4	1		
3	C	1	Total	O	S	0	0
			5	4	1		

- Molecule 4 is DIMETHYL SULFOXIDE (three-letter code: DMS) (formula: C<sub>2</sub>H<sub>6</sub>OS).



Mol	Chain	Residues	Atoms	ZeroOcc	AltConf
4	A	1	Total C O S 4 2 1 1	0	0
4	B	1	Total C O S 4 2 1 1	0	0
4	C	1	Total C O S 4 2 1 1	0	0

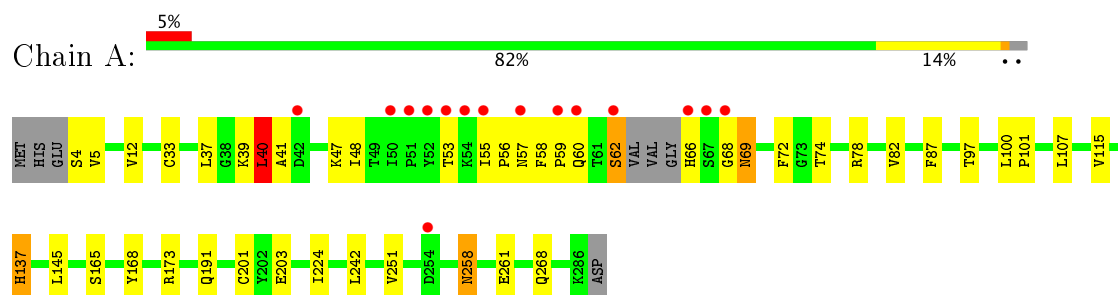
- Molecule 5 is water.

Mol	Chain	Residues	Atoms	ZeroOcc	AltConf
5	A	116	Total O 116 116	0	0
5	B	119	Total O 119 119	0	0
5	C	99	Total O 99 99	0	0

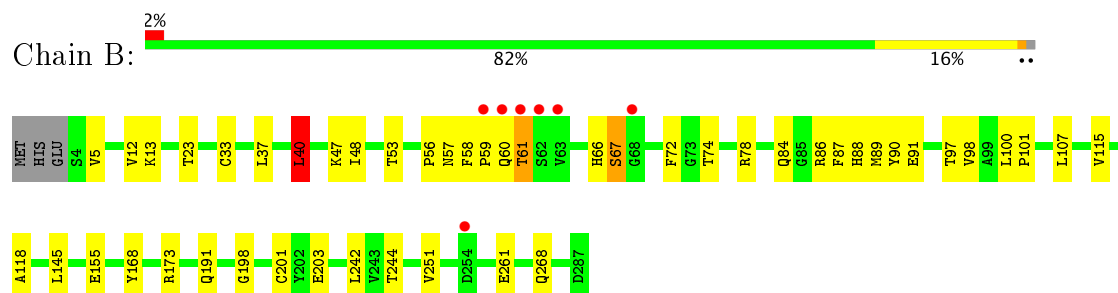
### 3 Residue-property plots [i](#)

These plots are drawn for all protein, RNA and DNA chains in the entry. The first graphic for a chain summarises the proportions of the various outlier classes displayed in the second graphic. The second graphic shows the sequence view annotated by issues in geometry and electron density. Residues are color-coded according to the number of geometric quality criteria for which they contain at least one outlier: green = 0, yellow = 1, orange = 2 and red = 3 or more. A red dot above a residue indicates a poor fit to the electron density ( $RSRZ > 2$ ). Stretches of 2 or more consecutive residues without any outlier are shown as a green connector. Residues present in the sample, but not in the model, are shown in grey.

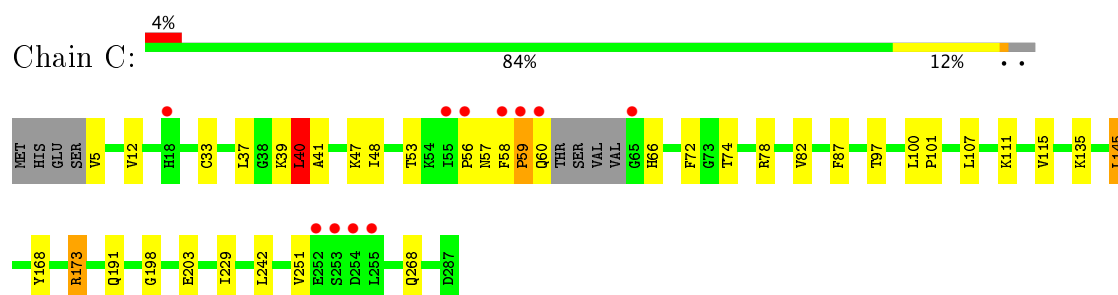
#### • Molecule 1: Purine-nucleoside phosphorylase



#### • Molecule 1: Purine-nucleoside phosphorylase



#### • Molecule 1: Purine-nucleoside phosphorylase



## 4 Data and refinement statistics

Property	Value	Source
Space group	P 21 21 21	Depositor
Cell constants a, b, c, $\alpha$ , $\beta$ , $\gamma$	49.72Å 121.27Å 133.25Å 90.00° 90.00° 90.00°	Depositor
Resolution (Å)	46.01 – 2.30 46.00 – 2.30	Depositor EDS
% Data completeness (in resolution range)	96.8 (46.01-2.30) 96.8 (46.00-2.30)	Depositor EDS
$R_{merge}$	0.13	Depositor
$R_{sym}$	0.13	Depositor
$\langle I/\sigma(I) \rangle$ <sup>1</sup>	4.93 (at 2.29Å)	Xtriage
Refinement program	PHENIX	Depositor
R, $R_{free}$	0.174 , 0.204 0.169 , 0.198	Depositor DCC
$R_{free}$ test set	1763 reflections (4.97%)	DCC
Wilson B-factor (Å <sup>2</sup> )	30.8	Xtriage
Anisotropy	0.746	Xtriage
Bulk solvent $k_{sol}$ (e/Å <sup>3</sup> ), $B_{sol}$ (Å <sup>2</sup> )	0.33 , 57.3	EDS
L-test for twinning <sup>2</sup>	$\langle  L  \rangle = 0.48$ , $\langle L^2 \rangle = 0.32$	Xtriage
Estimated twinning fraction	No twinning to report.	Xtriage
$F_o, F_c$ correlation	0.96	EDS
Total number of atoms	6803	wwPDB-VP
Average B, all atoms (Å <sup>2</sup> )	42.0	wwPDB-VP

Xtriage's analysis on translational NCS is as follows: *The largest off-origin peak in the Patterson function is 3.33% of the height of the origin peak. No significant pseudotranslation is detected.*

<sup>1</sup>Intensities estimated from amplitudes.

<sup>2</sup>Theoretical values of  $\langle |L| \rangle$ ,  $\langle L^2 \rangle$  for acentric reflections are 0.5, 0.333 respectively for untwinned datasets, and 0.375, 0.2 for perfectly twinned datasets.

## 5 Model quality [i](#)

### 5.1 Standard geometry [i](#)

Bond lengths and bond angles in the following residue types are not validated in this section: ADN, DMS, SO4

The Z score for a bond length (or angle) is the number of standard deviations the observed value is removed from the expected value. A bond length (or angle) with  $|Z| > 5$  is considered an outlier worth inspection. RMSZ is the root-mean-square of all Z scores of the bond lengths (or angles).

Mol	Chain	Bond lengths		Bond angles	
		RMSZ	$\# Z  > 5$	RMSZ	$\# Z  > 5$
1	A	0.69	1/2167 (0.0%)	0.70	1/2935 (0.0%)
1	B	0.71	1/2185 (0.0%)	0.73	1/2963 (0.0%)
1	C	0.67	0/2148	0.72	2/2909 (0.1%)
All	All	0.69	2/6500 (0.0%)	0.71	4/8807 (0.0%)

All (2) bond length outliers are listed below:

Mol	Chain	Res	Type	Atoms	Z	Observed(Å)	Ideal(Å)
1	A	201	CYS	CB-SG	-6.13	1.71	1.82
1	B	201	CYS	CB-SG	-5.67	1.72	1.81

All (4) bond angle outliers are listed below:

Mol	Chain	Res	Type	Atoms	Z	Observed(°)	Ideal(°)
1	B	40	LEU	CA-CB-CG	7.79	133.22	115.30
1	C	40	LEU	CA-CB-CG	7.56	132.69	115.30
1	A	40	LEU	CA-CB-CG	7.29	132.07	115.30
1	C	173	ARG	NE-CZ-NH2	-5.21	117.70	120.30

There are no chirality outliers.

There are no planarity outliers.

### 5.2 Too-close contacts [i](#)

In the following table, the Non-H and H(model) columns list the number of non-hydrogen atoms and hydrogen atoms in the chain respectively. The H(added) column lists the number of hydrogen atoms added and optimized by MolProbity. The Clashes column lists the number of clashes within the asymmetric unit, whereas Symm-Clashes lists symmetry related clashes.



Mol	Chain	Non-H	H(model)	H(added)	Clashes	Symm-Clashes
1	A	2127	0	2176	40	0
1	B	2147	0	2187	31	0
1	C	2111	0	2149	27	0
2	A	19	0	13	4	0
2	B	19	0	13	3	0
2	C	19	0	13	3	0
3	A	5	0	0	0	0
3	B	5	0	0	0	0
3	C	5	0	0	0	0
4	A	4	0	6	0	0
4	B	4	0	6	0	0
4	C	4	0	6	0	0
5	A	116	0	0	5	0
5	B	119	0	0	4	0
5	C	99	0	0	7	0
All	All	6803	0	6569	99	0

The all-atom clashscore is defined as the number of clashes found per 1000 atoms (including hydrogen atoms). The all-atom clashscore for this structure is 8.

All (99) close contacts within the same asymmetric unit are listed below, sorted by their clash magnitude.

Atom-1	Atom-2	Interatomic distance (Å)	Clash overlap (Å)
1:A:68:GLY:O	1:A:69:ASN:CG	1.92	1.08
1:A:68:GLY:HA2	5:A:381:HOH:O	1.57	1.01
1:B:155:GLU:OE2	5:B:361:HOH:O	1.82	0.95
1:A:4:SER:HB3	5:A:310:HOH:O	1.69	0.92
1:B:61:THR:HG22	1:B:87:PHE:CE1	2.06	0.90
1:A:68:GLY:O	1:A:69:ASN:OD1	1.96	0.82
1:A:68:GLY:CA	5:A:381:HOH:O	2.22	0.81
1:C:48:ILE:HD11	5:C:372:HOH:O	1.85	0.77
1:C:56:PRO:O	1:C:57:ASN:HB2	1.84	0.76
1:A:59:PRO:HB2	1:A:87:PHE:CE1	2.21	0.76
1:A:62:SER:HA	1:A:66:HIS:O	1.89	0.73
1:B:59:PRO:HB2	1:B:87:PHE:CE1	2.24	0.72
1:B:261:GLU:HB3	5:B:315:HOH:O	1.90	0.72
1:A:165:SER:HB3	5:C:351:HOH:O	1.93	0.68
1:A:68:GLY:O	1:A:69:ASN:ND2	2.27	0.67
1:C:59:PRO:HG3	1:C:97:THR:HG23	1.76	0.66
1:A:48:ILE:HD11	5:A:372:HOH:O	1.97	0.64
1:A:137:HIS:O	1:A:137:HIS:CD2	2.50	0.63
1:A:173:ARG:HE	1:A:191:GLN:NE2	1.97	0.63

*Continued on next page...*

*Continued from previous page...*

Atom-1	Atom-2	Interatomic distance (Å)	Clash overlap (Å)
1:A:258:ASN:ND2	1:A:261:GLU:OE1	2.25	0.62
1:A:137:HIS:CE1	1:A:224:ILE:HG23	2.36	0.61
1:A:203:GLU:OE2	2:A:300:ADN:H2	2.02	0.60
1:C:173:ARG:HE	1:C:191:GLN:NE2	2.01	0.58
1:B:173:ARG:HE	1:B:191:GLN:NE2	2.00	0.58
1:B:100:LEU:HB3	1:B:101:PRO:HD3	1.85	0.58
1:C:53:THR:HG22	1:C:60:GLN:HE22	1.69	0.58
1:A:165:SER:CB	5:C:351:HOH:O	2.49	0.57
1:B:33:CYS:SG	1:B:40:LEU:HD12	2.44	0.57
1:C:145:LEU:HA	5:C:299:HOH:O	2.05	0.57
1:C:59:PRO:HB2	1:C:87:PHE:CE1	2.40	0.57
1:B:203:GLU:OE2	2:B:301:ADN:H2	2.05	0.56
1:C:168:TYR:O	1:C:173:ARG:HD3	2.06	0.56
1:A:12:VAL:HG12	1:A:107:LEU:HD12	1.88	0.56
1:A:100:LEU:HB3	1:A:101:PRO:HD3	1.88	0.55
1:A:33:CYS:SG	1:A:40:LEU:HD12	2.48	0.54
1:A:168:TYR:O	1:A:173:ARG:HD3	2.08	0.54
1:A:68:GLY:C	1:A:69:ASN:CG	2.64	0.54
1:B:12:VAL:HG12	1:B:107:LEU:HD12	1.90	0.54
1:B:23:THR:OG1	1:B:48:ILE:HD12	2.08	0.53
1:C:33:CYS:SG	1:C:40:LEU:HD12	2.49	0.53
1:B:47:LYS:HA	1:B:72:PHE:O	2.09	0.53
1:A:137:HIS:CD2	1:A:137:HIS:C	2.82	0.52
1:B:56:PRO:O	1:B:57:ASN:HB2	2.09	0.52
2:C:302:ADN:H2'	2:C:302:ADN:N3	2.24	0.52
1:B:53:THR:HG22	1:B:60:GLN:HE22	1.75	0.52
1:A:56:PRO:O	1:A:57:ASN:HB2	2.09	0.51
1:C:5:VAL:HG11	1:C:57:ASN:ND2	2.25	0.51
1:A:173:ARG:HE	1:A:191:GLN:HE22	1.57	0.51
1:C:56:PRO:O	1:C:57:ASN:CB	2.59	0.51
1:C:59:PRO:CG	1:C:97:THR:HG23	2.41	0.51
1:C:12:VAL:HG12	1:C:107:LEU:HD12	1.93	0.50
1:B:61:THR:HG22	1:B:87:PHE:HE1	1.69	0.50
1:B:5:VAL:HG11	1:B:57:ASN:ND2	2.27	0.50
1:C:135:LYS:HE3	5:C:370:HOH:O	2.12	0.50
1:B:66:HIS:HD2	1:B:86:ARG:H	1.59	0.50
1:C:111:LYS:HE2	5:C:320:HOH:O	2.12	0.49
1:C:100:LEU:HB3	1:C:101:PRO:HD3	1.94	0.48
1:B:173:ARG:HE	1:B:191:GLN:HE22	1.62	0.48
1:A:137:HIS:HD2	1:A:137:HIS:O	1.94	0.47
1:A:39:LYS:C	1:A:41:ALA:H	2.18	0.47

*Continued on next page...*

*Continued from previous page...*

Atom-1	Atom-2	Interatomic distance (Å)	Clash overlap (Å)
1:B:88:HIS:O	1:B:91:GLU:HB2	2.14	0.47
1:C:39:LYS:C	1:C:41:ALA:H	2.18	0.47
1:C:47:LYS:HA	1:C:72:PHE:O	2.14	0.47
1:B:168:TYR:O	1:B:173:ARG:HD3	2.16	0.45
1:A:5:VAL:HG11	1:A:57:ASN:ND2	2.30	0.45
1:A:47:LYS:HA	1:A:72:PHE:O	2.15	0.45
1:B:198:GLY:CA	1:C:145:LEU:HD13	2.46	0.45
1:B:67:SER:O	1:B:84:GLN:O	2.33	0.45
1:A:145:LEU:HD13	1:C:198:GLY:CA	2.47	0.45
1:A:53:THR:HG22	1:A:60:GLN:HE22	1.82	0.44
1:A:74:THR:HA	1:A:78:ARG:O	2.17	0.44
1:C:37:LEU:O	1:C:40:LEU:HG	2.17	0.44
1:C:173:ARG:HE	1:C:191:GLN:HE22	1.64	0.44
1:C:229:ILE:HD13	1:C:229:ILE:HA	1.78	0.44
1:A:59:PRO:HG3	1:A:97:THR:HG23	1.99	0.44
1:B:13:LYS:HE3	5:B:349:HOH:O	2.17	0.44
1:B:90:TYR:CD1	1:B:90:TYR:C	2.91	0.44
2:A:300:ADN:N3	2:A:300:ADN:H2'	2.33	0.44
1:B:89:MET:SD	1:B:98:VAL:HG21	2.58	0.43
1:C:41:ALA:HB2	1:C:82:VAL:HG11	2.00	0.43
1:A:145:LEU:HA	5:C:379:HOH:O	2.17	0.43
1:A:137:HIS:CD2	1:A:224:ILE:HD13	2.53	0.43
1:B:74:THR:HA	1:B:78:ARG:O	2.19	0.43
1:A:203:GLU:OE1	2:A:300:ADN:N1	2.52	0.42
1:A:41:ALA:HB2	1:A:82:VAL:HG11	2.00	0.42
1:B:37:LEU:O	1:B:40:LEU:HG	2.19	0.42
1:A:37:LEU:O	1:A:40:LEU:HG	2.20	0.42
1:A:55:ILE:HA	1:A:56:PRO:HD3	1.86	0.42
1:B:203:GLU:OE2	2:B:301:ADN:C2	2.68	0.42
5:A:393:HOH:O	1:B:145:LEU:HA	2.18	0.42
1:B:118:ALA:HB1	1:B:244:THR:HG21	2.02	0.42
1:C:203:GLU:OE1	2:C:302:ADN:N1	2.53	0.41
1:C:74:THR:HA	1:C:78:ARG:O	2.19	0.41
1:C:203:GLU:OE2	2:C:302:ADN:H2	2.21	0.41
1:A:203:GLU:OE2	2:A:300:ADN:C2	2.68	0.41
2:B:301:ADN:N3	2:B:301:ADN:H2'	2.35	0.41
1:A:4:SER:OG	1:A:5:VAL:N	2.54	0.41
1:B:173:ARG:HG3	5:B:312:HOH:O	2.21	0.41
1:B:59:PRO:HG3	1:B:97:THR:HG23	2.03	0.41

There are no symmetry-related clashes.

## 5.3 Torsion angles

### 5.3.1 Protein backbone

In the following table, the Percentiles column shows the percent Ramachandran outliers of the chain as a percentile score with respect to all X-ray entries followed by that with respect to entries of similar resolution.

The Analysed column shows the number of residues for which the backbone conformation was analysed, and the total number of residues.

Mol	Chain	Analysed	Favoured	Allowed	Outliers	Percentiles	
1	A	277/287 (96%)	265 (96%)	11 (4%)	1 (0%)	38	47
1	B	282/287 (98%)	273 (97%)	9 (3%)	0	100	100
1	C	275/287 (96%)	266 (97%)	8 (3%)	1 (0%)	38	47
All	All	834/861 (97%)	804 (96%)	28 (3%)	2 (0%)	51	63

All (2) Ramachandran outliers are listed below:

Mol	Chain	Res	Type
1	A	69	ASN
1	C	59	PRO

### 5.3.2 Protein sidechains

In the following table, the Percentiles column shows the percent sidechain outliers of the chain as a percentile score with respect to all X-ray entries followed by that with respect to entries of similar resolution.

The Analysed column shows the number of residues for which the sidechain conformation was analysed, and the total number of residues.

Mol	Chain	Analysed	Rotameric	Outliers	Percentiles	
1	A	234/242 (97%)	225 (96%)	9 (4%)	38	52
1	B	236/242 (98%)	228 (97%)	8 (3%)	42	57
1	C	230/242 (95%)	222 (96%)	8 (4%)	41	56
All	All	700/726 (96%)	675 (96%)	25 (4%)	40	55

All (25) residues with a non-rotameric sidechain are listed below:

Mol	Chain	Res	Type
1	A	40	LEU

*Continued on next page...*

*Continued from previous page...*

Mol	Chain	Res	Type
1	A	58	PHE
1	A	62	SER
1	A	115	VAL
1	A	137	HIS
1	A	242	LEU
1	A	251	VAL
1	A	258	ASN
1	A	268	GLN
1	B	40	LEU
1	B	58	PHE
1	B	61	THR
1	B	67	SER
1	B	115	VAL
1	B	242	LEU
1	B	251	VAL
1	B	268	GLN
1	C	40	LEU
1	C	58	PHE
1	C	66	HIS
1	C	115	VAL
1	C	145	LEU
1	C	242	LEU
1	C	251	VAL
1	C	268	GLN

Some sidechains can be flipped to improve hydrogen bonding and reduce clashes. All (22) such sidechains are listed below:

Mol	Chain	Res	Type
1	A	17	HIS
1	A	20	GLN
1	A	57	ASN
1	A	60	GLN
1	A	191	GLN
1	A	236	GLN
1	A	274	GLN
1	B	17	HIS
1	B	18	HIS
1	B	20	GLN
1	B	57	ASN
1	B	60	GLN
1	B	66	HIS
1	B	191	GLN

*Continued on next page...*

*Continued from previous page...*

Mol	Chain	Res	Type
1	B	236	GLN
1	B	274	GLN
1	C	17	HIS
1	C	20	GLN
1	C	57	ASN
1	C	60	GLN
1	C	191	GLN
1	C	274	GLN

### 5.3.3 RNA [i](#)

There are no RNA molecules in this entry.

### 5.4 Non-standard residues in protein, DNA, RNA chains [i](#)

There are no non-standard protein/DNA/RNA residues in this entry.

### 5.5 Carbohydrates [i](#)

There are no carbohydrates in this entry.

### 5.6 Ligand geometry [i](#)

9 ligands are modelled in this entry.

In the following table, the Counts columns list the number of bonds (or angles) for which Mogul statistics could be retrieved, the number of bonds (or angles) that are observed in the model and the number of bonds (or angles) that are defined in the Chemical Component Dictionary. The Link column lists molecule types, if any, to which the group is linked. The Z score for a bond length (or angle) is the number of standard deviations the observed value is removed from the expected value. A bond length (or angle) with  $|Z| > 2$  is considered an outlier worth inspection. RMSZ is the root-mean-square of all Z scores of the bond lengths (or angles).

Mol	Type	Chain	Res	Link	Bond lengths			Bond angles		
					Counts	RMSZ	# Z  > 2	Counts	RMSZ	# Z  > 2
2	ADN	A	300	-	18,21,21	5.07	9 (50%)	17,31,31	2.87	2 (11%)
3	SO4	A	303	-	4,4,4	0.17	0	6,6,6	0.21	0
4	DMS	A	306	-	3,3,3	1.67	1 (33%)	3,3,3	0.95	0
2	ADN	B	301	-	18,21,21	4.60	9 (50%)	17,31,31	3.23	1 (5%)
3	SO4	B	304	-	4,4,4	0.37	0	6,6,6	0.48	0

Mol	Type	Chain	Res	Link	Bond lengths			Bond angles		
					Counts	RMSZ	# Z  > 2	Counts	RMSZ	# Z  > 2
4	DMS	B	305	-	3,3,3	1.70	1 (33%)	3,3,3	0.90	0
2	ADN	C	302	-	18,21,21	4.83	9 (50%)	17,31,31	1.87	3 (17%)
3	SO4	C	304	-	4,4,4	0.37	0	6,6,6	0.46	0
4	DMS	C	307	-	3,3,3	1.38	0	3,3,3	1.03	0

In the following table, the Chirals column lists the number of chiral outliers, the number of chiral centers analysed, the number of these observed in the model and the number defined in the Chemical Component Dictionary. Similar counts are reported in the Torsion and Rings columns. '-' means no outliers of that kind were identified.

Mol	Type	Chain	Res	Link	Chirals	Torsions	Rings
2	ADN	A	300	-	-	0/2/22/22	0/3/3/3
3	SO4	A	303	-	-	0/0/0/0	0/0/0/0
4	DMS	A	306	-	-	0/0/0/0	0/0/0/0
2	ADN	B	301	-	-	0/2/22/22	0/3/3/3
3	SO4	B	304	-	-	0/0/0/0	0/0/0/0
4	DMS	B	305	-	-	0/0/0/0	0/0/0/0
2	ADN	C	302	-	-	0/2/22/22	0/3/3/3
3	SO4	C	304	-	-	0/0/0/0	0/0/0/0
4	DMS	C	307	-	-	0/0/0/0	0/0/0/0

All (29) bond length outliers are listed below:

Mol	Chain	Res	Type	Atoms	Z	Observed(Å)	Ideal(Å)
2	B	301	ADN	C6-N1	2.02	1.46	1.37
2	B	301	ADN	O4'-C1'	2.39	1.44	1.41
2	C	302	ADN	C6-C5	2.42	1.55	1.42
2	A	300	ADN	C6-C5	2.45	1.55	1.42
4	A	306	DMS	O-S	2.52	1.67	1.50
4	B	305	DMS	O-S	2.52	1.67	1.50
2	B	301	ADN	C6-N6	2.53	1.44	1.34
2	C	302	ADN	C6-N6	2.71	1.45	1.34
2	B	301	ADN	C5-N7	3.00	1.49	1.39
2	A	300	ADN	C6-N6	3.06	1.46	1.34
2	C	302	ADN	C5-N7	3.19	1.50	1.39
2	A	300	ADN	C5-N7	3.46	1.51	1.39
2	B	301	ADN	C5-C4	3.85	1.49	1.40
2	A	300	ADN	O4'-C1'	3.90	1.46	1.41
2	A	300	ADN	C5-C4	3.94	1.49	1.40
2	C	302	ADN	O4'-C1'	4.09	1.46	1.41
2	C	302	ADN	C5-C4	4.26	1.50	1.40
2	B	301	ADN	C4-N3	6.73	1.45	1.35

*Continued on next page...*

*Continued from previous page...*

Mol	Chain	Res	Type	Atoms	Z	Observed(Å)	Ideal(Å)
2	C	302	ADN	C4-N3	7.15	1.46	1.35
2	B	301	ADN	C8-N7	7.86	1.49	1.34
2	A	300	ADN	C8-N7	7.98	1.49	1.34
2	C	302	ADN	C8-N7	8.18	1.50	1.34
2	A	300	ADN	C4-N3	8.76	1.48	1.35
2	B	301	ADN	C2-N1	9.42	1.51	1.33
2	C	302	ADN	C2-N1	9.90	1.52	1.33
2	A	300	ADN	C2-N1	10.35	1.53	1.33
2	B	301	ADN	C2-N3	11.55	1.51	1.32
2	C	302	ADN	C2-N3	11.77	1.51	1.32
2	A	300	ADN	C2-N3	12.23	1.52	1.32

All (6) bond angle outliers are listed below:

Mol	Chain	Res	Type	Atoms	Z	Observed( $^{\circ}$ )	Ideal( $^{\circ}$ )
2	B	301	ADN	N3-C2-N1	-12.79	117.72	128.86
2	A	300	ADN	N3-C2-N1	-10.46	119.75	128.86
2	C	302	ADN	N3-C2-N1	-5.40	124.16	128.86
2	A	300	ADN	C4'-O4'-C1'	-4.65	104.82	109.77
2	C	302	ADN	C4'-O4'-C1'	-3.84	105.68	109.77
2	C	302	ADN	C5'-C4'-C3'	-2.60	108.76	115.05

There are no chirality outliers.

There are no torsion outliers.

There are no ring outliers.

3 monomers are involved in 10 short contacts:

Mol	Chain	Res	Type	Clashes	Symm-Clashes
2	A	300	ADN	4	0
2	B	301	ADN	3	0
2	C	302	ADN	3	0

## 5.7 Other polymers [i](#)

There are no such residues in this entry.

## 5.8 Polymer linkage issues [i](#)

There are no chain breaks in this entry.



## 6 Fit of model and data

### 6.1 Protein, DNA and RNA chains

In the following table, the column labelled ‘#RSRZ> 2’ contains the number (and percentage) of RSRZ outliers, followed by percent RSRZ outliers for the chain as percentile scores relative to all X-ray entries and entries of similar resolution. The OWAB column contains the minimum, median, 95<sup>th</sup> percentile and maximum values of the occupancy-weighted average B-factor per residue. The column labelled ‘Q< 0.9’ lists the number of (and percentage) of residues with an average occupancy less than 0.9.

Mol	Chain	Analysed	<RSRZ>	#RSRZ>2	OWAB(Å <sup>2</sup> )	Q<0.9
1	A	280/287 (97%)	-0.03	15 (5%) 26 33	17, 40, 91, 134	0
1	B	284/287 (98%)	-0.26	7 (2%) 58 65	16, 35, 71, 132	0
1	C	279/287 (97%)	-0.14	11 (3%) 40 47	16, 35, 83, 154	0
All	All	843/861 (97%)	-0.15	33 (3%) 40 47	16, 36, 83, 154	0

All (33) RSRZ outliers are listed below:

Mol	Chain	Res	Type	RSRZ
1	C	65	GLY	7.0
1	A	68	GLY	6.5
1	C	59	PRO	5.0
1	A	62	SER	5.0
1	A	67	SER	4.5
1	B	60	GLN	4.4
1	C	60	GLN	4.3
1	A	66	HIS	4.2
1	A	51	PRO	3.9
1	C	55	ILE	3.9
1	A	57	ASN	3.5
1	B	62	SER	3.4
1	A	50	ILE	3.4
1	A	55	ILE	3.3
1	B	63	VAL	3.2
1	A	60	GLN	3.2
1	A	42	ASP	3.1
1	B	254	ASP	3.1
1	C	255	LEU	2.9
1	A	59	PRO	2.8
1	B	59	PRO	2.7
1	C	253	SER	2.6
1	C	58	PHE	2.6

*Continued on next page...*

*Continued from previous page...*

Mol	Chain	Res	Type	RSRZ
1	C	254	ASP	2.6
1	B	61	THR	2.6
1	C	56	PRO	2.5
1	A	254	ASP	2.3
1	C	18	HIS	2.3
1	A	54	LYS	2.3
1	A	52	TYR	2.2
1	B	68	GLY	2.1
1	C	252	GLU	2.0
1	A	53	THR	2.0

## 6.2 Non-standard residues in protein, DNA, RNA chains [i](#)

There are no non-standard protein/DNA/RNA residues in this entry.

## 6.3 Carbohydrates [i](#)

There are no carbohydrates in this entry.

## 6.4 Ligands [i](#)

In the following table, the Atoms column lists the number of modelled atoms in the group and the number defined in the chemical component dictionary. LLDF column lists the quality of electron density of the group with respect to its neighbouring residues in protein, DNA or RNA chains. The B-factors column lists the minimum, median, 95<sup>th</sup> percentile and maximum values of B factors of atoms in the group. The column labelled 'Q< 0.9' lists the number of atoms with occupancy less than 0.9.

Mol	Type	Chain	Res	Atoms	RSCC	RSR	LLDF	B-factors( $\text{\AA}^2$ )	Q<0.9
4	DMS	A	306	4/4	0.98	0.15	0.98	38,38,38,38	0
4	DMS	C	307	4/4	0.98	0.14	0.80	30,30,30,30	0
2	ADN	B	301	19/19	0.96	0.12	0.45	16,23,30,34	0
2	ADN	A	300	19/19	0.96	0.12	0.31	27,33,40,41	0
4	DMS	B	305	4/4	0.97	0.12	0.24	35,35,35,35	0
2	ADN	C	302	19/19	0.95	0.12	0.24	21,31,38,40	0
3	SO4	A	303	5/5	0.99	0.12	0.17	42,42,42,42	0
3	SO4	C	304	5/5	0.99	0.10	-0.43	34,34,34,34	0
3	SO4	B	304	5/5	0.99	0.10	-0.74	31,31,31,31	0

## 6.5 Other polymers [i](#)

There are no such residues in this entry.