



# Full wwPDB X-ray Structure Validation Report ⓘ

Feb 14, 2017 – 04:59 pm GMT

PDB ID : 5F8F  
Title : Rv2258c-SFG  
Authors : Im, H.N.; Suh, S.W.  
Deposited on : 2015-12-09  
Resolution : 1.90 Å(reported)

This is a Full wwPDB X-ray Structure Validation Report for a publicly released PDB entry.

We welcome your comments at [validation@mail.wwpdb.org](mailto:validation@mail.wwpdb.org)

A user guide is available at

<http://wwpdb.org/validation/2016/XrayValidationReportHelp>

with specific help available everywhere you see the ⓘ symbol.

---

The following versions of software and data (see [references ⓘ](#)) were used in the production of this report:

MolProbity : 4.02b-467  
Mogul : 1.7.2 (RC1), CSD as538be (2017)  
Xtriage (Phenix) : 1.9-1692  
EDS : trunk28620  
Percentile statistics : 20161228.v01 (using entries in the PDB archive December 28th 2016)  
Refmac : 5.8.0135  
CCP4 : 6.5.0  
Ideal geometry (proteins) : Engh & Huber (2001)  
Ideal geometry (DNA, RNA) : Parkinson et al. (1996)  
Validation Pipeline (wwPDB-VP) : recalc28949

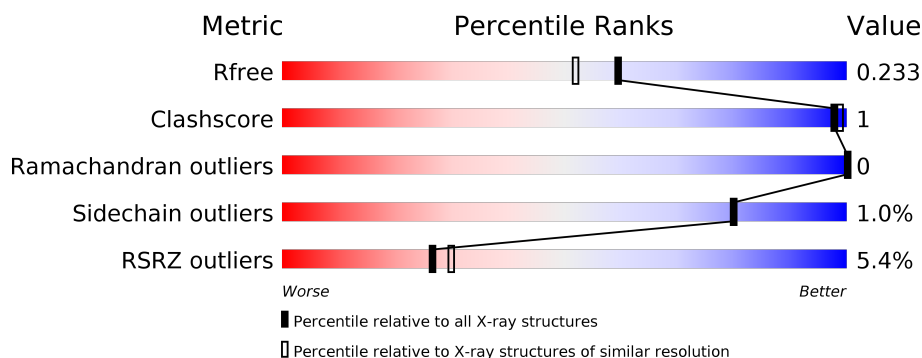
# 1 Overall quality at a glance

The following experimental techniques were used to determine the structure:

*X-RAY DIFFRACTION*

The reported resolution of this entry is 1.90 Å.

Percentile scores (ranging between 0-100) for global validation metrics of the entry are shown in the following graphic. The table shows the number of entries on which the scores are based.



Metric	Whole archive (#Entries)	Similar resolution (#Entries, resolution range(Å))
$R_{free}$	100719	5047 (1.90-1.90)
Clashscore	112137	5731 (1.90-1.90)
Ramachandran outliers	110173	5669 (1.90-1.90)
Sidechain outliers	110143	5670 (1.90-1.90)
RSRZ outliers	101464	5100 (1.90-1.90)

The table below summarises the geometric issues observed across the polymeric chains and their fit to the electron density. The red, orange, yellow and green segments on the lower bar indicate the fraction of residues that contain outliers for  $\geq 3$ , 2, 1 and 0 types of geometric quality criteria. A grey segment represents the fraction of residues that are not modelled. The numeric value for each fraction is indicated below the corresponding segment, with a dot representing fractions  $\leq 5\%$ . The upper red bar (where present) indicates the fraction of residues that have poor fit to the electron density. The numeric value is given above the bar.

Mol	Chain	Length	Quality of chain
1	A	377	<div> <div>5%</div> <div> <div></div> <div>90%</div> <div>6%</div> </div> </div>
1	B	377	<div> <div>6%</div> <div> <div></div> <div>94%</div> <div>6%</div> </div> </div>
1	C	377	<div> <div>4%</div> <div> <div></div> <div>92%</div> <div>6%</div> </div> </div>

The following table lists non-polymeric compounds, carbohydrate monomers and non-standard residues in protein, DNA, RNA chains that are outliers for geometric or electron-density-fit criteria:

Mol	Type	Chain	Res	Chirality	Geometry	Clashes	Electron density
3	GOL	A	403	-	-	-	X

## 2 Entry composition

There are 4 unique types of molecules in this entry. The entry contains 8796 atoms, of which 0 are hydrogens and 0 are deuteriums.

In the tables below, the ZeroOcc column contains the number of atoms modelled with zero occupancy, the AltConf column contains the number of residues with at least one atom in alternate conformation and the Trace column contains the number of residues modelled with at most 2 atoms.

- Molecule 1 is a protein called Methyltransferase.

Mol	Chain	Residues	Atoms					ZeroOcc	AltConf	Trace
1	A	353	Total	C	N	O	S	0	0	0
			2647	1664	451	516	16			
1	B	361	Total	C	N	O	S	0	0	0
			2696	1693	460	527	16			
1	C	354	Total	C	N	O	S	0	0	0
			2657	1670	454	517	16			

There are 87 discrepancies between the modelled and reference sequences:

Chain	Residue	Modelled	Actual	Comment	Reference
A	-15	MET	-	expression tag	UNP O53532
A	-14	GLY	-	expression tag	UNP O53532
A	-13	SER	-	expression tag	UNP O53532
A	-12	SER	-	expression tag	UNP O53532
A	-11	HIS	-	expression tag	UNP O53532
A	-10	HIS	-	expression tag	UNP O53532
A	-9	HIS	-	expression tag	UNP O53532
A	-8	HIS	-	expression tag	UNP O53532
A	-7	HIS	-	expression tag	UNP O53532
A	-6	HIS	-	expression tag	UNP O53532
A	-5	SER	-	expression tag	UNP O53532
A	-4	SER	-	expression tag	UNP O53532
A	-3	GLY	-	expression tag	UNP O53532
A	-2	LEU	-	expression tag	UNP O53532
A	-1	VAL	-	expression tag	UNP O53532
A	0	PRO	-	expression tag	UNP O53532
A	1	ARG	-	expression tag	UNP O53532
A	2	GLY	-	expression tag	UNP O53532
A	3	SER	-	expression tag	UNP O53532
A	4	HIS	-	expression tag	UNP O53532
A	5	MET	-	expression tag	UNP O53532
A	354	LEU	-	expression tag	UNP O53532
A	355	GLU	-	expression tag	UNP O53532

*Continued on next page...*

*Continued from previous page...*

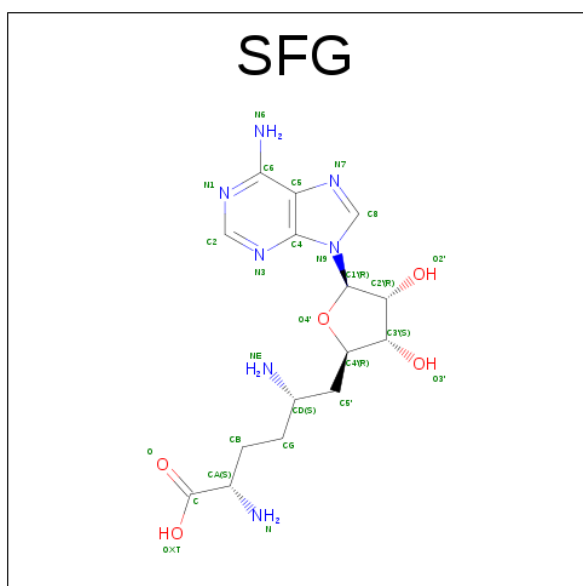
Chain	Residue	Modelled	Actual	Comment	Reference
A	356	HIS	-	expression tag	UNP O53532
A	357	HIS	-	expression tag	UNP O53532
A	358	HIS	-	expression tag	UNP O53532
A	359	HIS	-	expression tag	UNP O53532
A	360	HIS	-	expression tag	UNP O53532
A	361	HIS	-	expression tag	UNP O53532
B	-15	MET	-	expression tag	UNP O53532
B	-14	GLY	-	expression tag	UNP O53532
B	-13	SER	-	expression tag	UNP O53532
B	-12	SER	-	expression tag	UNP O53532
B	-11	HIS	-	expression tag	UNP O53532
B	-10	HIS	-	expression tag	UNP O53532
B	-9	HIS	-	expression tag	UNP O53532
B	-8	HIS	-	expression tag	UNP O53532
B	-7	HIS	-	expression tag	UNP O53532
B	-6	HIS	-	expression tag	UNP O53532
B	-5	SER	-	expression tag	UNP O53532
B	-4	SER	-	expression tag	UNP O53532
B	-3	GLY	-	expression tag	UNP O53532
B	-2	LEU	-	expression tag	UNP O53532
B	-1	VAL	-	expression tag	UNP O53532
B	0	PRO	-	expression tag	UNP O53532
B	1	ARG	-	expression tag	UNP O53532
B	2	GLY	-	expression tag	UNP O53532
B	3	SER	-	expression tag	UNP O53532
B	4	HIS	-	expression tag	UNP O53532
B	5	MET	-	expression tag	UNP O53532
B	354	LEU	-	expression tag	UNP O53532
B	355	GLU	-	expression tag	UNP O53532
B	356	HIS	-	expression tag	UNP O53532
B	357	HIS	-	expression tag	UNP O53532
B	358	HIS	-	expression tag	UNP O53532
B	359	HIS	-	expression tag	UNP O53532
B	360	HIS	-	expression tag	UNP O53532
B	361	HIS	-	expression tag	UNP O53532
C	-15	MET	-	expression tag	UNP O53532
C	-14	GLY	-	expression tag	UNP O53532
C	-13	SER	-	expression tag	UNP O53532
C	-12	SER	-	expression tag	UNP O53532
C	-11	HIS	-	expression tag	UNP O53532
C	-10	HIS	-	expression tag	UNP O53532
C	-9	HIS	-	expression tag	UNP O53532

*Continued on next page...*

Continued from previous page...

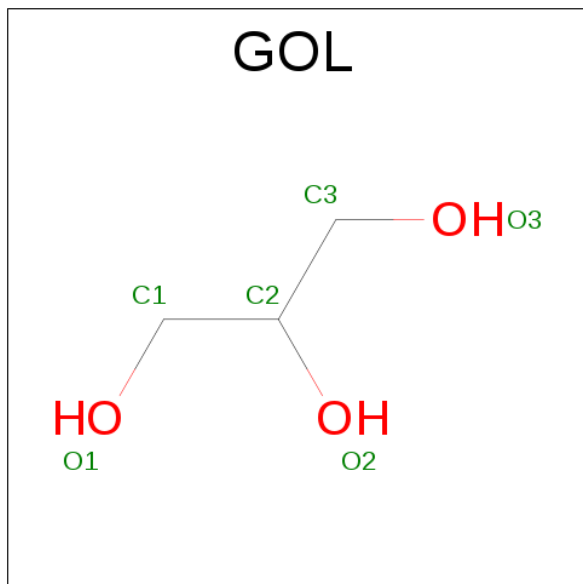
Chain	Residue	Modelled	Actual	Comment	Reference
C	-8	HIS	-	expression tag	UNP O53532
C	-7	HIS	-	expression tag	UNP O53532
C	-6	HIS	-	expression tag	UNP O53532
C	-5	SER	-	expression tag	UNP O53532
C	-4	SER	-	expression tag	UNP O53532
C	-3	GLY	-	expression tag	UNP O53532
C	-2	LEU	-	expression tag	UNP O53532
C	-1	VAL	-	expression tag	UNP O53532
C	0	PRO	-	expression tag	UNP O53532
C	1	ARG	-	expression tag	UNP O53532
C	2	GLY	-	expression tag	UNP O53532
C	3	SER	-	expression tag	UNP O53532
C	4	HIS	-	expression tag	UNP O53532
C	5	MET	-	expression tag	UNP O53532
C	354	LEU	-	expression tag	UNP O53532
C	355	GLU	-	expression tag	UNP O53532
C	356	HIS	-	expression tag	UNP O53532
C	357	HIS	-	expression tag	UNP O53532
C	358	HIS	-	expression tag	UNP O53532
C	359	HIS	-	expression tag	UNP O53532
C	360	HIS	-	expression tag	UNP O53532
C	361	HIS	-	expression tag	UNP O53532

- Molecule 2 is SINEFUNGIN (three-letter code: SFG) (formula:  $C_{15}H_{23}N_7O_5$ ).



Mol	Chain	Residues	Atoms				ZeroOcc	AltConf
2	A	1	Total	C	N	O	0	0
			27	15	7	5		
2	B	1	Total	C	N	O	0	0
			27	15	7	5		
2	C	1	Total	C	N	O	0	0
			27	15	7	5		

- Molecule 3 is GLYCEROL (three-letter code: GOL) (formula:  $C_3H_8O_3$ ).



Mol	Chain	Residues	Atoms			ZeroOcc	AltConf
3	A	1	Total	C	O	0	0
			6	3	3		
3	A	1	Total	C	O	0	0
			6	3	3		
3	A	1	Total	C	O	0	0
			6	3	3		

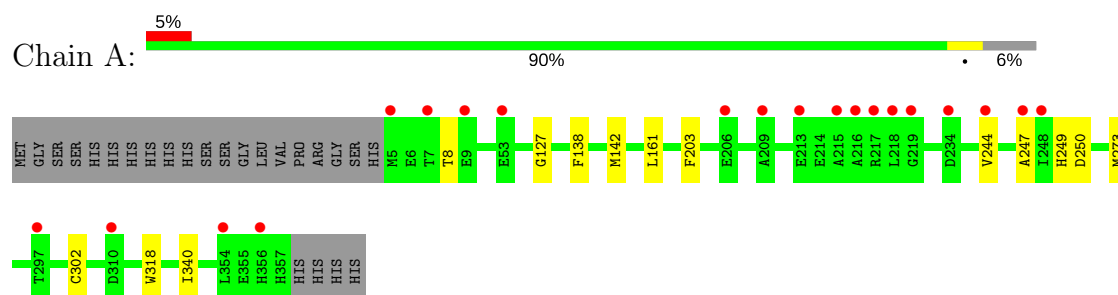
- Molecule 4 is water.

Mol	Chain	Residues	Atoms		ZeroOcc	AltConf
4	A	209	Total	O	0	0
			209	209		
4	B	188	Total	O	0	0
			188	188		
4	C	300	Total	O	0	0
			300	300		

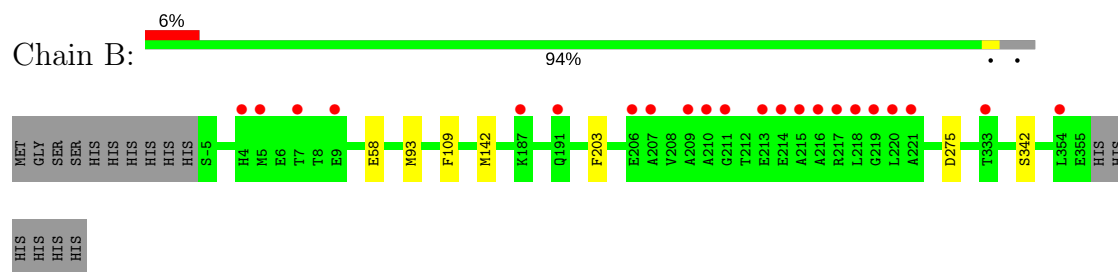
### 3 Residue-property plots

These plots are drawn for all protein, RNA and DNA chains in the entry. The first graphic for a chain summarises the proportions of the various outlier classes displayed in the second graphic. The second graphic shows the sequence view annotated by issues in geometry and electron density. Residues are color-coded according to the number of geometric quality criteria for which they contain at least one outlier: green = 0, yellow = 1, orange = 2 and red = 3 or more. A red dot above a residue indicates a poor fit to the electron density ( $RSRZ > 2$ ). Stretches of 2 or more consecutive residues without any outlier are shown as a green connector. Residues present in the sample, but not in the model, are shown in grey.

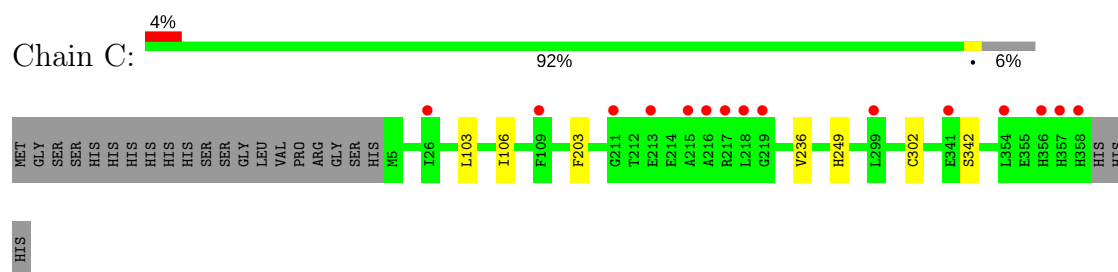
#### • Molecule 1: Methyltransferase



#### • Molecule 1: Methyltransferase



#### • Molecule 1: Methyltransferase





## 4 Data and refinement statistics

Property	Value	Source
Space group	C 1 2 1	Depositor
Cell constants a, b, c, $\alpha$ , $\beta$ , $\gamma$	108.96Å 141.12Å 96.97Å 90.00° 98.38° 90.00°	Depositor
Resolution (Å)	50.00 – 1.90 31.16 – 1.90	Depositor EDS
% Data completeness (in resolution range)	99.8 (50.00-1.90) 99.8 (31.16-1.90)	Depositor EDS
$R_{merge}$	(Not available)	Depositor
$R_{sym}$	(Not available)	Depositor
$\langle I/\sigma(I) \rangle$ <sup>1</sup>	3.24 (at 1.91Å)	Xtriage
Refinement program	REFMAC	Depositor
R, $R_{free}$	0.193 , 0.222 0.205 , 0.233	Depositor DCC
$R_{free}$ test set	5682 reflections (5.27%)	DCC
Wilson B-factor (Å <sup>2</sup> )	31.9	Xtriage
Anisotropy	0.082	Xtriage
Bulk solvent $k_{sol}$ (e/Å <sup>3</sup> ), $B_{sol}$ (Å <sup>2</sup> )	0.39 , 45.0	EDS
L-test for twinning <sup>2</sup>	$\langle  L  \rangle = 0.51$ , $\langle L^2 \rangle = 0.35$	Xtriage
Estimated twinning fraction	No twinning to report.	Xtriage
$F_o, F_c$ correlation	0.96	EDS
Total number of atoms	8796	wwPDB-VP
Average B, all atoms (Å <sup>2</sup> )	38.0	wwPDB-VP

Xtriage's analysis on translational NCS is as follows: *The largest off-origin peak in the Patterson function is 4.92% of the height of the origin peak. No significant pseudotranslation is detected.*

<sup>1</sup>Intensities estimated from amplitudes.

<sup>2</sup>Theoretical values of  $\langle |L| \rangle$ ,  $\langle L^2 \rangle$  for acentric reflections are 0.5, 0.333 respectively for untwinned datasets, and 0.375, 0.2 for perfectly twinned datasets.

## 5 Model quality ⓘ

### 5.1 Standard geometry ⓘ

Bond lengths and bond angles in the following residue types are not validated in this section: SFG, CSD, GOL

The Z score for a bond length (or angle) is the number of standard deviations the observed value is removed from the expected value. A bond length (or angle) with  $|Z| > 5$  is considered an outlier worth inspection. RMSZ is the root-mean-square of all Z scores of the bond lengths (or angles).

Mol	Chain	Bond lengths		Bond angles	
		RMSZ	# Z  >5	RMSZ	# Z  >5
1	A	0.47	0/2685	0.70	0/3644
1	B	0.50	0/2734	0.71	0/3710
1	C	0.51	0/2696	0.72	0/3659
All	All	0.49	0/8115	0.71	0/11013

There are no bond length outliers.

There are no bond angle outliers.

There are no chirality outliers.

There are no planarity outliers.

### 5.2 Too-close contacts ⓘ

In the following table, the Non-H and H(model) columns list the number of non-hydrogen atoms and hydrogen atoms in the chain respectively. The H(added) column lists the number of hydrogen atoms added and optimized by MolProbity. The Clashes column lists the number of clashes within the asymmetric unit, whereas Symm-Clashes lists symmetry related clashes.

Mol	Chain	Non-H	H(model)	H(added)	Clashes	Symm-Clashes
1	A	2647	0	2601	9	0
1	B	2696	0	2658	3	0
1	C	2657	0	2608	4	0
2	A	27	0	22	0	0
2	B	27	0	22	0	0
2	C	27	0	22	0	0
3	A	18	0	24	0	0
4	A	209	0	0	0	0
4	B	188	0	0	1	0
4	C	300	0	0	1	0
All	All	8796	0	7957	14	0

The all-atom clashscore is defined as the number of clashes found per 1000 atoms (including hydrogen atoms). The all-atom clashscore for this structure is 1.

All (14) close contacts within the same asymmetric unit are listed below, sorted by their clash magnitude.

Atom-1	Atom-2	Interatomic distance (Å)	Clash overlap (Å)
1:C:236:VAL:HB	4:C:517:HOH:O	1.66	0.96
1:A:249:HIS:NE2	1:A:302:CSD:OD2	2.07	0.87
1:C:249:HIS:NE2	1:C:302:CSD:OD2	2.12	0.82
1:A:249:HIS:HE2	1:A:302:CSD:HD2	1.28	0.78
1:C:249:HIS:HE2	1:C:302:CSD:HD2	1.41	0.56
1:A:138:PHE:CE1	1:A:142:MET:SD	2.99	0.55
1:B:142:MET:HB3	4:B:662:HOH:O	2.06	0.55
1:A:250:ASP:OD1	1:A:302:CSD:SG	2.67	0.52
1:C:103:LEU:O	1:C:106:ILE:HG22	2.09	0.52
1:A:127:GLY:HA2	1:B:58:GLU:HG3	1.95	0.49
1:A:244:VAL:HG13	1:A:273:MET:HA	2.00	0.44
1:A:244:VAL:HG23	1:A:247:ALA:HB3	2.01	0.43
1:A:8:THR:HG22	1:B:93:MET:HE1	1.99	0.43
1:A:161:LEU:HD11	1:A:340:ILE:HD11	2.02	0.41

There are no symmetry-related clashes.

## 5.3 Torsion angles

### 5.3.1 Protein backbone

In the following table, the Percentiles column shows the percent Ramachandran outliers of the chain as a percentile score with respect to all X-ray entries followed by that with respect to entries of similar resolution.

The Analysed column shows the number of residues for which the backbone conformation was analysed, and the total number of residues.

Mol	Chain	Analysed	Favoured	Allowed	Outliers	Percentiles	
1	A	350/377 (93%)	344 (98%)	6 (2%)	0	100	100
1	B	358/377 (95%)	349 (98%)	9 (2%)	0	100	100
1	C	351/377 (93%)	343 (98%)	8 (2%)	0	100	100
All	All	1059/1131 (94%)	1036 (98%)	23 (2%)	0	100	100

There are no Ramachandran outliers to report.

### 5.3.2 Protein sidechains ⓘ

In the following table, the Percentiles column shows the percent sidechain outliers of the chain as a percentile score with respect to all X-ray entries followed by that with respect to entries of similar resolution.

The Analysed column shows the number of residues for which the sidechain conformation was analysed, and the total number of residues.

Mol	Chain	Analysed	Rotameric	Outliers	Percentiles	
1	A	271/292 (93%)	269 (99%)	2 (1%)	87	87
1	B	277/292 (95%)	273 (99%)	4 (1%)	71	69
1	C	272/292 (93%)	270 (99%)	2 (1%)	87	87
All	All	820/876 (94%)	812 (99%)	8 (1%)	80	80

All (8) residues with a non-rotameric sidechain are listed below:

Mol	Chain	Res	Type
1	A	203	PHE
1	A	318	TRP
1	B	109	PHE
1	B	203	PHE
1	B	275	ASP
1	B	342	SER
1	C	203	PHE
1	C	342	SER

Some sidechains can be flipped to improve hydrogen bonding and reduce clashes. All (3) such sidechains are listed below:

Mol	Chain	Res	Type
1	A	357	HIS
1	B	108	GLN
1	C	281	GLN

### 5.3.3 RNA ⓘ

There are no RNA molecules in this entry.

## 5.4 Non-standard residues in protein, DNA, RNA chains ⓘ

3 non-standard protein/DNA/RNA residues are modelled in this entry.

In the following table, the Counts columns list the number of bonds (or angles) for which Mogul statistics could be retrieved, the number of bonds (or angles) that are observed in the model and the number of bonds (or angles) that are defined in the chemical component dictionary. The Link column lists molecule types, if any, to which the group is linked. The Z score for a bond length (or angle) is the number of standard deviations the observed value is removed from the expected value. A bond length (or angle) with  $|Z| > 2$  is considered an outlier worth inspection. RMSZ is the root-mean-square of all Z scores of the bond lengths (or angles).

Mol	Type	Chain	Res	Link	Bond lengths			Bond angles		
					Counts	RMSZ	# Z  > 2	Counts	RMSZ	# Z  > 2
1	CSD	A	302	1	4,7,8	1.07	0	2,8,10	1.77	0
1	CSD	B	302	1	4,7,8	1.37	1 (25%)	2,8,10	2.41	1 (50%)
1	CSD	C	302	1	4,7,8	1.37	0	2,8,10	1.72	0

In the following table, the Chirals column lists the number of chiral outliers, the number of chiral centers analysed, the number of these observed in the model and the number defined in the chemical component dictionary. Similar counts are reported in the Torsion and Rings columns. '-' means no outliers of that kind were identified.

Mol	Type	Chain	Res	Link	Chirals	Torsions	Rings
1	CSD	A	302	1	-	0/2/6/8	0/0/0/0
1	CSD	B	302	1	-	0/2/6/8	0/0/0/0
1	CSD	C	302	1	-	0/2/6/8	0/0/0/0

All (1) bond length outliers are listed below:

Mol	Chain	Res	Type	Atoms	Z	Observed(Å)	Ideal(Å)
1	B	302	CSD	CA-C	2.00	1.52	1.50

All (1) bond angle outliers are listed below:

Mol	Chain	Res	Type	Atoms	Z	Observed(°)	Ideal(°)
1	B	302	CSD	OD1-SG-CB	2.78	110.81	105.61

There are no chirality outliers.

There are no torsion outliers.

There are no ring outliers.

2 monomers are involved in 5 short contacts:

Mol	Chain	Res	Type	Clashes	Symm-Clashes
1	A	302	CSD	3	0
1	C	302	CSD	2	0

## 5.5 Carbohydrates [i](#)

There are no carbohydrates in this entry.

## 5.6 Ligand geometry [i](#)

6 ligands are modelled in this entry.

In the following table, the Counts columns list the number of bonds (or angles) for which Mogul statistics could be retrieved, the number of bonds (or angles) that are observed in the model and the number of bonds (or angles) that are defined in the chemical component dictionary. The Link column lists molecule types, if any, to which the group is linked. The Z score for a bond length (or angle) is the number of standard deviations the observed value is removed from the expected value. A bond length (or angle) with  $|Z| > 2$  is considered an outlier worth inspection. RMSZ is the root-mean-square of all Z scores of the bond lengths (or angles).

Mol	Type	Chain	Res	Link	Bond lengths			Bond angles		
					Counts	RMSZ	# $ Z  > 2$	Counts	RMSZ	# $ Z  > 2$
2	SFG	A	401	-	21,29,29	2.00	5 (23%)	18,42,42	3.05	3 (16%)
3	GOL	A	402	-	5,5,5	0.40	0	5,5,5	0.48	0
3	GOL	A	403	-	5,5,5	0.30	0	5,5,5	0.66	0
3	GOL	A	404	-	5,5,5	0.39	0	5,5,5	0.25	0
2	SFG	B	400	-	21,29,29	1.92	5 (23%)	18,42,42	3.17	3 (16%)
2	SFG	C	400	-	21,29,29	1.99	4 (19%)	18,42,42	3.49	3 (16%)

In the following table, the Chirals column lists the number of chiral outliers, the number of chiral centers analysed, the number of these observed in the model and the number defined in the chemical component dictionary. Similar counts are reported in the Torsion and Rings columns. '-' means no outliers of that kind were identified.

Mol	Type	Chain	Res	Link	Chirals	Torsions	Rings
2	SFG	A	401	-	-	0/9/33/33	0/3/3/3
3	GOL	A	402	-	-	0/4/4/4	0/0/0/0
3	GOL	A	403	-	-	0/4/4/4	0/0/0/0
3	GOL	A	404	-	-	0/4/4/4	0/0/0/0
2	SFG	B	400	-	-	0/9/33/33	0/3/3/3
2	SFG	C	400	-	-	0/9/33/33	0/3/3/3

All (14) bond length outliers are listed below:

Mol	Chain	Res	Type	Atoms	Z	Observed(Å)	Ideal(Å)
2	A	401	SFG	C5-C4	-2.85	1.34	1.40
2	C	400	SFG	C5-C4	-2.27	1.35	1.40
2	B	400	SFG	C5-C4	-2.10	1.35	1.40

*Continued on next page...*

*Continued from previous page...*

Mol	Chain	Res	Type	Atoms	Z	Observed(Å)	Ideal(Å)
2	A	401	SFG	C2-N1	2.89	1.39	1.33
2	A	401	SFG	O4'-C1'	2.94	1.45	1.41
2	B	400	SFG	CG-CD	3.10	1.57	1.53
2	B	400	SFG	O4'-C1'	3.55	1.46	1.41
2	C	400	SFG	CG-CD	3.61	1.58	1.53
2	B	400	SFG	C2-N1	3.69	1.40	1.33
2	A	401	SFG	CG-CD	4.22	1.59	1.53
2	C	400	SFG	C2-N1	4.53	1.42	1.33
2	A	401	SFG	C2-N3	5.16	1.40	1.32
2	C	400	SFG	C2-N3	5.37	1.41	1.32
2	B	400	SFG	C2-N3	5.42	1.41	1.32

All (9) bond angle outliers are listed below:

Mol	Chain	Res	Type	Atoms	Z	Observed(°)	Ideal(°)
2	C	400	SFG	N3-C2-N1	-13.29	117.28	128.86
2	B	400	SFG	N3-C2-N1	-11.84	118.55	128.86
2	A	401	SFG	N3-C2-N1	-11.73	118.64	128.86
2	B	400	SFG	C1'-N9-C4	-3.86	119.96	126.64
2	C	400	SFG	C4'-O4'-C1'	-3.68	105.85	109.77
2	A	401	SFG	C1'-N9-C4	-3.55	120.50	126.64
2	C	400	SFG	C1'-N9-C4	-3.48	120.62	126.64
2	B	400	SFG	C4'-O4'-C1'	-2.50	107.10	109.77
2	A	401	SFG	C4'-C5'-CD	-2.23	109.56	113.51

There are no chirality outliers.

There are no torsion outliers.

There are no ring outliers.

No monomer is involved in short contacts.

## 5.7 Other polymers [i](#)

There are no such residues in this entry.

## 5.8 Polymer linkage issues [i](#)

There are no chain breaks in this entry.

## 6 Fit of model and data ⓘ

### 6.1 Protein, DNA and RNA chains ⓘ

In the following table, the column labelled ‘#RSRZ > 2’ contains the number (and percentage) of RSRZ outliers, followed by percent RSRZ outliers for the chain as percentile scores relative to all X-ray entries and entries of similar resolution. The OWAB column contains the minimum, median, 95<sup>th</sup> percentile and maximum values of the occupancy-weighted average B-factor per residue. The column labelled ‘Q < 0.9’ lists the number of (and percentage) of residues with an average occupancy less than 0.9.

Mol	Chain	Analysed	<RSRZ>	#RSRZ > 2		OWAB(Å <sup>2</sup> )	Q < 0.9
1	A	352/377 (93%)	0.23	20 (5%)	24 28	25, 36, 56, 83	0
1	B	360/377 (95%)	0.20	22 (6%)	22 25	26, 38, 64, 94	0
1	C	353/377 (93%)	0.08	15 (4%)	37 40	21, 30, 52, 85	0
All	All	1065/1131 (94%)	0.17	57 (5%)	26 30	21, 35, 58, 94	0

All (57) RSRZ outliers are listed below:

Mol	Chain	Res	Type	RSRZ
1	B	206	GLU	6.0
1	A	354	LEU	4.6
1	B	354	LEU	4.6
1	A	5	MET	4.6
1	C	358	HIS	4.6
1	B	218	LEU	4.6
1	B	217	ARG	4.2
1	C	354	LEU	4.1
1	B	209	ALA	4.0
1	B	213	GLU	4.0
1	B	215	ALA	4.0
1	B	216	ALA	3.8
1	A	356	HIS	3.6
1	C	213	GLU	3.5
1	B	219	GLY	3.4
1	B	333	THR	3.4
1	B	5	MET	3.4
1	A	234	ASP	3.4
1	A	218	LEU	3.3
1	C	341	GLU	3.3
1	C	357	HIS	3.2
1	A	213	GLU	3.2
1	A	244	VAL	3.1

*Continued on next page...*



*Continued from previous page...*

Mol	Chain	Res	Type	RSRZ
1	C	356	HIS	3.1
1	B	210	ALA	3.0
1	A	215	ALA	2.9
1	C	109	PHE	2.9
1	A	206	GLU	2.8
1	B	221	ALA	2.7
1	B	4	HIS	2.7
1	A	219	GLY	2.7
1	A	216	ALA	2.6
1	B	9	GLU	2.6
1	C	215	ALA	2.6
1	C	217	ARG	2.6
1	B	7	THR	2.6
1	A	209	ALA	2.6
1	C	216	ALA	2.6
1	B	187	LYS	2.5
1	B	207	ALA	2.5
1	A	53	GLU	2.5
1	B	211	GLY	2.5
1	A	9	GLU	2.5
1	A	217	ARG	2.4
1	B	214	GLU	2.4
1	C	299	LEU	2.3
1	C	218	LEU	2.3
1	A	247	ALA	2.2
1	A	297	THR	2.2
1	C	26	ILE	2.2
1	A	7	THR	2.1
1	B	220	LEU	2.1
1	B	191	GLN	2.1
1	C	211	GLY	2.1
1	C	219	GLY	2.1
1	A	310	ASP	2.0
1	A	248	ILE	2.0

## 6.2 Non-standard residues in protein, DNA, RNA chains ⓘ

In the following table, the Atoms column lists the number of modelled atoms in the group and the number defined in the chemical component dictionary. LLDF column lists the quality of electron density of the group with respect to its neighbouring residues in protein, DNA or RNA chains. The B-factors column lists the minimum, median, 95<sup>th</sup> percentile and maximum values of B factors of atoms in the group. The column labelled ‘Q < 0.9’ lists the number of atoms with occupancy

less than 0.9.

Mol	Type	Chain	Res	Atoms	RSCC	RSR	LLDF	B-factors( $\text{\AA}^2$ )	Q<0.9
1	CSD	A	302	8/9	0.87	0.14	-	23,31,36,41	0
1	CSD	C	302	8/9	0.92	0.11	-	21,27,33,35	0
1	CSD	B	302	8/9	0.87	0.12	-	26,31,41,41	0

### 6.3 Carbohydrates [i](#)

There are no carbohydrates in this entry.

### 6.4 Ligands [i](#)

In the following table, the Atoms column lists the number of modelled atoms in the group and the number defined in the chemical component dictionary. LLDF column lists the quality of electron density of the group with respect to its neighbouring residues in protein, DNA or RNA chains. The B-factors column lists the minimum, median, 95<sup>th</sup> percentile and maximum values of B factors of atoms in the group. The column labelled 'Q< 0.9' lists the number of atoms with occupancy less than 0.9.

Mol	Type	Chain	Res	Atoms	RSCC	RSR	LLDF	B-factors( $\text{\AA}^2$ )	Q<0.9
3	GOL	A	403	6/6	0.89	0.15	3.68	38,44,48,52	0
3	GOL	A	402	6/6	0.91	0.12	1.62	35,37,39,41	0
2	SFG	C	400	27/27	0.85	0.13	0.67	39,48,53,55	0
3	GOL	A	404	6/6	0.93	0.09	0.35	39,45,49,53	0
2	SFG	A	401	27/27	0.91	0.12	-0.17	34,38,43,45	0
2	SFG	B	400	27/27	0.88	0.12	-0.35	36,45,49,50	0

### 6.5 Other polymers [i](#)

There are no such residues in this entry.