



# Full wwPDB X-ray Structure Validation Report ⓘ

Feb 13, 2017 – 01:00 pm GMT

PDB ID : 4F9G  
Title : Crystal structure of STING complex with Cyclic di-GMP.  
Authors : Kabaleeswaran, V.; Wu, H.  
Deposited on : 2012-05-18  
Resolution : 2.95 Å(reported)

This is a Full wwPDB X-ray Structure Validation Report for a publicly released PDB entry.

We welcome your comments at [validation@mail.wwpdb.org](mailto:validation@mail.wwpdb.org)

A user guide is available at

<http://wwpdb.org/validation/2016/XrayValidationReportHelp>

with specific help available everywhere you see the ⓘ symbol.

---

The following versions of software and data (see [references ⓘ](#)) were used in the production of this report:

MolProbity : 4.02b-467  
Mogul : 1.7.2 (RC1), CSD as538be (2017)  
Xtriage (Phenix) : 1.9-1692  
EDS : trunk28620  
Percentile statistics : 20161228.v01 (using entries in the PDB archive December 28th 2016)  
Refmac : 5.8.0135  
CCP4 : 6.5.0  
Ideal geometry (proteins) : Engh & Huber (2001)  
Ideal geometry (DNA, RNA) : Parkinson et al. (1996)  
Validation Pipeline (wwPDB-VP) : recalc28949

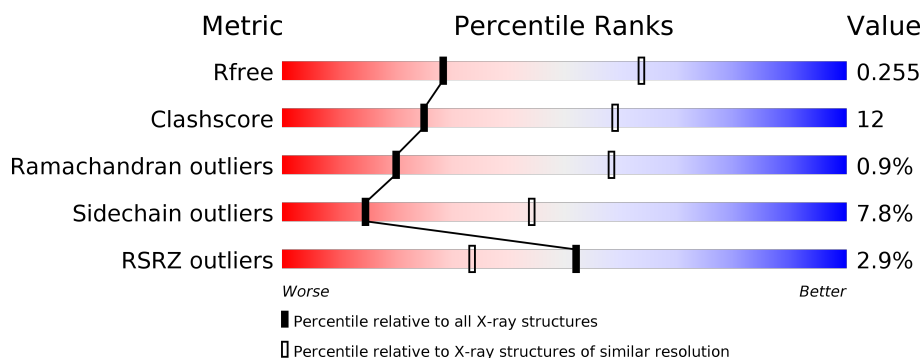
# 1 Overall quality at a glance

The following experimental techniques were used to determine the structure:

## *X-RAY DIFFRACTION*

The reported resolution of this entry is 2.95 Å.

Percentile scores (ranging between 0-100) for global validation metrics of the entry are shown in the following graphic. The table shows the number of entries on which the scores are based.



Metric	Whole archive (#Entries)	Similar resolution (#Entries, resolution range(Å))
$R_{free}$	100719	2395 (3.00-2.92)
Clashscore	112137	2773 (3.00-2.92)
Ramachandran outliers	110173	2680 (3.00-2.92)
Sidechain outliers	110143	2683 (3.00-2.92)
RSRZ outliers	101464	2421 (3.00-2.92)

The table below summarises the geometric issues observed across the polymeric chains and their fit to the electron density. The red, orange, yellow and green segments on the lower bar indicate the fraction of residues that contain outliers for  $\geq 3$ , 2, 1 and 0 types of geometric quality criteria. A grey segment represents the fraction of residues that are not modelled. The numeric value for each fraction is indicated below the corresponding segment, with a dot representing fractions  $\leq 5\%$ . The upper red bar (where present) indicates the fraction of residues that have poor fit to the electron density. The numeric value is given above the bar.

Mol	Chain	Length	Quality of chain
1	A	265	<div> <div>2%</div> <div> <div></div> <div>46%</div> <div>16%</div> <div>•</div> <div>36%</div> </div> </div>
1	C	265	<div> <div>2%</div> <div> <div></div> <div>47%</div> <div>16%</div> <div>•</div> <div>36%</div> </div> </div>

## 2 Entry composition

There are 2 unique types of molecules in this entry. The entry contains 2720 atoms, of which 0 are hydrogens and 0 are deuteriums.

In the tables below, the ZeroOcc column contains the number of atoms modelled with zero occupancy, the AltConf column contains the number of residues with at least one atom in alternate conformation and the Trace column contains the number of residues modelled with at most 2 atoms.

- Molecule 1 is a protein called Transmembrane protein 173.

Mol	Chain	Residues	Atoms					ZeroOcc	AltConf	Trace
1	A	170	Total	C	N	O	S	3	0	0
			1346	852	233	256	5			
1	C	169	Total	C	N	O	S	4	0	0
			1328	841	230	252	5			

There are 48 discrepancies between the modelled and reference sequences:

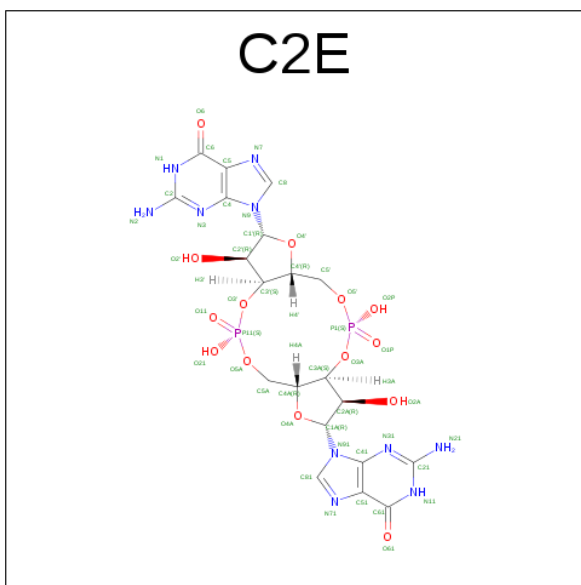
Chain	Residue	Modelled	Actual	Comment	Reference
A	115	MET	-	INITIATING METHIONINE	UNP Q86WV6
A	116	HIS	-	EXPRESSION TAG	UNP Q86WV6
A	117	HIS	-	EXPRESSION TAG	UNP Q86WV6
A	118	HIS	-	EXPRESSION TAG	UNP Q86WV6
A	119	HIS	-	EXPRESSION TAG	UNP Q86WV6
A	120	HIS	-	EXPRESSION TAG	UNP Q86WV6
A	121	HIS	-	EXPRESSION TAG	UNP Q86WV6
A	122	SER	-	EXPRESSION TAG	UNP Q86WV6
A	123	SER	-	EXPRESSION TAG	UNP Q86WV6
A	124	GLY	-	EXPRESSION TAG	UNP Q86WV6
A	125	VAL	-	EXPRESSION TAG	UNP Q86WV6
A	126	ASP	-	EXPRESSION TAG	UNP Q86WV6
A	127	LEU	-	EXPRESSION TAG	UNP Q86WV6
A	128	GLY	-	EXPRESSION TAG	UNP Q86WV6
A	129	THR	-	EXPRESSION TAG	UNP Q86WV6
A	130	GLU	-	EXPRESSION TAG	UNP Q86WV6
A	131	ASN	-	EXPRESSION TAG	UNP Q86WV6
A	132	LEU	-	EXPRESSION TAG	UNP Q86WV6
A	133	TYR	-	EXPRESSION TAG	UNP Q86WV6
A	134	PHE	-	EXPRESSION TAG	UNP Q86WV6
A	135	GLN	-	EXPRESSION TAG	UNP Q86WV6
A	136	SER	-	EXPRESSION TAG	UNP Q86WV6
A	137	ASN	-	EXPRESSION TAG	UNP Q86WV6
A	138	ALA	-	EXPRESSION TAG	UNP Q86WV6
C	115	MET	-	INITIATING METHIONINE	UNP Q86WV6

*Continued on next page...*

*Continued from previous page...*

Chain	Residue	Modelled	Actual	Comment	Reference
C	116	HIS	-	EXPRESSION TAG	UNP Q86WV6
C	117	HIS	-	EXPRESSION TAG	UNP Q86WV6
C	118	HIS	-	EXPRESSION TAG	UNP Q86WV6
C	119	HIS	-	EXPRESSION TAG	UNP Q86WV6
C	120	HIS	-	EXPRESSION TAG	UNP Q86WV6
C	121	HIS	-	EXPRESSION TAG	UNP Q86WV6
C	122	SER	-	EXPRESSION TAG	UNP Q86WV6
C	123	SER	-	EXPRESSION TAG	UNP Q86WV6
C	124	GLY	-	EXPRESSION TAG	UNP Q86WV6
C	125	VAL	-	EXPRESSION TAG	UNP Q86WV6
C	126	ASP	-	EXPRESSION TAG	UNP Q86WV6
C	127	LEU	-	EXPRESSION TAG	UNP Q86WV6
C	128	GLY	-	EXPRESSION TAG	UNP Q86WV6
C	129	THR	-	EXPRESSION TAG	UNP Q86WV6
C	130	GLU	-	EXPRESSION TAG	UNP Q86WV6
C	131	ASN	-	EXPRESSION TAG	UNP Q86WV6
C	132	LEU	-	EXPRESSION TAG	UNP Q86WV6
C	133	TYR	-	EXPRESSION TAG	UNP Q86WV6
C	134	PHE	-	EXPRESSION TAG	UNP Q86WV6
C	135	GLN	-	EXPRESSION TAG	UNP Q86WV6
C	136	SER	-	EXPRESSION TAG	UNP Q86WV6
C	137	ASN	-	EXPRESSION TAG	UNP Q86WV6
C	138	ALA	-	EXPRESSION TAG	UNP Q86WV6

- Molecule 2 is 9,9'-[(2R,3R,3AS,5S,7AR,9R,10R,10AS,12S,14AR)-3,5,10,12-TETRAHYDRO XY-5,12-DIOXIDOOCTAHYDRO-2H,7H-DIFURO[3,2-D:3',2'-J][1,3,7,9,2,8]TETRAOXA DIPHOSPHACYCLODODECINE-2,9-DIYL]BIS(2-AMINO-1,9-DIHYDRO-6H-PURIN-6-ONE) (three-letter code: C2E) (formula: C<sub>20</sub>H<sub>24</sub>N<sub>10</sub>O<sub>14</sub>P<sub>2</sub>).

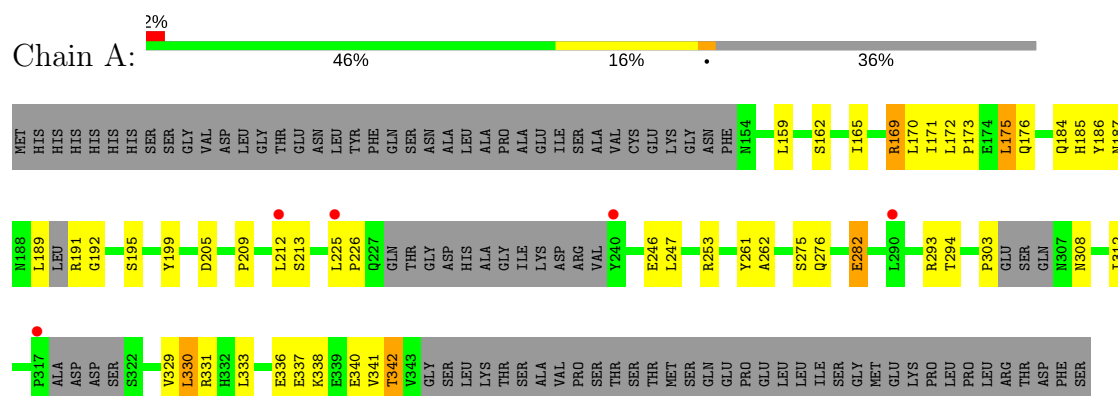


Mol	Chain	Residues	Atoms					ZeroOcc	AltConf
2	A	1	Total 46	C 20	N 10	O 14	P 2	0	0

### 3 Residue-property plots [i](#)

These plots are drawn for all protein, RNA and DNA chains in the entry. The first graphic for a chain summarises the proportions of the various outlier classes displayed in the second graphic. The second graphic shows the sequence view annotated by issues in geometry and electron density. Residues are color-coded according to the number of geometric quality criteria for which they contain at least one outlier: green = 0, yellow = 1, orange = 2 and red = 3 or more. A red dot above a residue indicates a poor fit to the electron density ( $RSRZ > 2$ ). Stretches of 2 or more consecutive residues without any outlier are shown as a green connector. Residues present in the sample, but not in the model, are shown in grey.

#### • Molecule 1: Transmembrane protein 173



#### • Molecule 1: Transmembrane protein 173



## 4 Data and refinement statistics

Property	Value	Source
Space group	P 1 21 1	Depositor
Cell constants a, b, c, $\alpha$ , $\beta$ , $\gamma$	60.03Å 74.20Å 60.01Å 90.00° 96.32° 90.00°	Depositor
Resolution (Å)	38.30 – 2.95 38.30 – 2.94	Depositor EDS
% Data completeness (in resolution range)	98.5 (38.30-2.95) 98.6 (38.30-2.94)	Depositor EDS
$R_{merge}$	0.07	Depositor
$R_{sym}$	(Not available)	Depositor
$\langle I/\sigma(I) \rangle$ <sup>1</sup>	4.25 (at 2.95Å)	Xtriage
Refinement program	PHENIX	Depositor
R, $R_{free}$	0.205 , 0.255 0.202 , 0.255	Depositor DCC
$R_{free}$ test set	1078 reflections (9.78%)	DCC
Wilson B-factor (Å <sup>2</sup> )	80.5	Xtriage
Anisotropy	0.433	Xtriage
Bulk solvent $k_{sol}$ (e/Å <sup>3</sup> ), $B_{sol}$ (Å <sup>2</sup> )	0.34 , 61.3	EDS
L-test for twinning <sup>2</sup>	$\langle  L  \rangle = 0.50$ , $\langle L^2 \rangle = 0.34$	Xtriage
Estimated twinning fraction	0.479 for l,-k,h	Xtriage
$F_o, F_c$ correlation	0.94	EDS
Total number of atoms	2720	wwPDB-VP
Average B, all atoms (Å <sup>2</sup> )	91.0	wwPDB-VP

Xtriage's analysis on translational NCS is as follows: *The largest off-origin peak in the Patterson function is 6.64% of the height of the origin peak. No significant pseudotranslation is detected.*

<sup>1</sup>Intensities estimated from amplitudes.

<sup>2</sup>Theoretical values of  $\langle |L| \rangle$ ,  $\langle L^2 \rangle$  for acentric reflections are 0.5, 0.333 respectively for untwinned datasets, and 0.375, 0.2 for perfectly twinned datasets.

## 5 Model quality [i](#)

### 5.1 Standard geometry [i](#)

Bond lengths and bond angles in the following residue types are not validated in this section: C2E

The Z score for a bond length (or angle) is the number of standard deviations the observed value is removed from the expected value. A bond length (or angle) with  $|Z| > 5$  is considered an outlier worth inspection. RMSZ is the root-mean-square of all Z scores of the bond lengths (or angles).

Mol	Chain	Bond lengths		Bond angles	
		RMSZ	$\# Z  > 5$	RMSZ	$\# Z  > 5$
1	A	0.55	0/1369	0.71	1/1858 (0.1%)
1	C	0.52	0/1350	0.70	0/1832
All	All	0.54	0/2719	0.70	1/3690 (0.0%)

There are no bond length outliers.

All (1) bond angle outliers are listed below:

Mol	Chain	Res	Type	Atoms	Z	Observed(°)	Ideal(°)
1	A	340	GLU	OE1-CD-OE2	-5.75	116.39	123.30

There are no chirality outliers.

There are no planarity outliers.

### 5.2 Too-close contacts [i](#)

In the following table, the Non-H and H(model) columns list the number of non-hydrogen atoms and hydrogen atoms in the chain respectively. The H(added) column lists the number of hydrogen atoms added and optimized by MolProbity. The Clashes column lists the number of clashes within the asymmetric unit, whereas Symm-Clashes lists symmetry related clashes.

Mol	Chain	Non-H	H(model)	H(added)	Clashes	Symm-Clashes
1	A	1346	0	1294	33	0
1	C	1328	0	1281	36	0
2	A	46	0	22	1	0
All	All	2720	0	2597	64	0

The all-atom clashscore is defined as the number of clashes found per 1000 atoms (including hydrogen atoms). The all-atom clashscore for this structure is 12.

All (64) close contacts within the same asymmetric unit are listed below, sorted by their clash magnitude.

Atom-1	Atom-2	Interatomic distance (Å)	Clash overlap (Å)
1:A:189:LEU:C	1:A:191:ARG:N	2.15	0.99
1:C:212:LEU:HD13	1:C:261:TYR:CE1	2.19	0.78
1:A:212:LEU:HD13	1:A:261:TYR:CE1	2.23	0.74
2:A:401:C2E:H512	2:A:401:C2E:H5'2	1.73	0.69
1:C:212:LEU:HD13	1:C:261:TYR:HE1	1.61	0.64
1:C:186:TYR:CD2	1:C:192:GLY:C	2.72	0.62
1:A:165:ILE:HA	1:A:169:ARG:HD3	1.83	0.60
1:C:187:ASN:O	1:C:191:ARG:CB	2.48	0.60
1:C:172:LEU:N	1:C:173:PRO:HD2	2.17	0.60
1:C:189:LEU:C	1:C:191:ARG:N	2.55	0.60
1:A:186:TYR:CD2	1:A:192:GLY:C	2.77	0.58
1:C:246:GLU:OE2	1:C:253:ARG:NH1	2.35	0.58
1:C:308:ASN:OD1	1:C:308:ASN:N	2.33	0.58
1:A:172:LEU:N	1:A:173:PRO:HD2	2.19	0.57
1:A:303:PRO:HD3	1:C:276:GLN:HE22	1.69	0.57
1:C:184:GLN:O	1:C:187:ASN:HB3	2.05	0.56
1:C:189:LEU:C	1:C:191:ARG:HA	2.26	0.56
1:A:246:GLU:OE2	1:A:253:ARG:NH1	2.38	0.55
1:A:276:GLN:HE22	1:C:303:PRO:HD3	1.72	0.55
1:A:184:GLN:O	1:A:187:ASN:HB3	2.08	0.54
1:C:186:TYR:HD2	1:C:192:GLY:C	2.09	0.54
1:A:212:LEU:HD13	1:A:261:TYR:HE1	1.68	0.53
1:C:189:LEU:C	1:C:191:ARG:CA	2.78	0.52
1:A:159:LEU:HD21	1:C:162:SER:HB3	1.93	0.51
1:C:186:TYR:O	1:C:191:ARG:HA	2.11	0.50
1:A:186:TYR:HD2	1:A:192:GLY:C	2.14	0.50
1:C:185:HIS:O	1:C:189:LEU:N	2.35	0.49
1:C:293:ARG:HG3	1:C:293:ARG:HH11	1.77	0.49
1:C:225:LEU:HD12	1:C:226:PRO:HD2	1.94	0.49
1:A:209:PRO:HD2	1:A:261:TYR:CE1	2.48	0.48
1:A:185:HIS:O	1:A:189:LEU:N	2.39	0.48
1:A:225:LEU:HD12	1:A:226:PRO:HD2	1.95	0.48
1:A:293:ARG:HH11	1:A:293:ARG:HG3	1.77	0.48
1:A:162:SER:HB3	1:C:159:LEU:HD21	1.96	0.47
1:A:338:LYS:O	1:A:342:THR:OG1	2.25	0.47
1:A:199:TYR:HD1	1:A:312:ILE:HD11	1.80	0.46
1:A:195:SER:HB3	1:A:336:GLU:OE1	2.16	0.46
1:C:209:PRO:HD2	1:C:261:TYR:CE1	2.49	0.46
1:A:175:LEU:HD23	1:A:308:ASN:HB2	1.98	0.45
1:A:303:PRO:HD3	1:C:276:GLN:NE2	2.32	0.45

*Continued on next page...*

Continued from previous page...

Atom-1	Atom-2	Interatomic distance (Å)	Clash overlap (Å)
1:C:199:TYR:HD1	1:C:312:ILE:HD11	1.81	0.44
1:C:224:LYS:HE3	1:C:224:LYS:HB3	1.63	0.44
1:C:175:LEU:HD23	1:C:308:ASN:HB2	1.98	0.44
1:A:282:GLU:OE2	1:A:282:GLU:HA	2.18	0.44
1:C:195:SER:HB3	1:C:336:GLU:OE1	2.18	0.44
1:C:247:LEU:HD21	1:C:329:VAL:HB	2.00	0.44
1:C:282:GLU:HA	1:C:282:GLU:OE2	2.18	0.43
1:A:333:LEU:HA	1:A:333:LEU:HD12	1.77	0.43
1:A:225:LEU:HA	1:A:226:PRO:HD3	1.90	0.43
1:A:276:GLN:NE2	1:C:303:PRO:HD3	2.33	0.43
1:C:247:LEU:HD22	1:C:330:LEU:HD13	2.00	0.43
1:A:247:LEU:HD21	1:A:329:VAL:HB	2.02	0.42
1:A:175:LEU:CD2	1:A:308:ASN:HB2	2.50	0.42
1:A:172:LEU:O	1:A:308:ASN:ND2	2.52	0.42
1:A:247:LEU:HD22	1:A:330:LEU:HD13	2.01	0.42
1:C:172:LEU:O	1:C:308:ASN:ND2	2.52	0.42
1:A:173:PRO:O	1:A:176:GLN:NE2	2.46	0.41
1:C:173:PRO:HG2	1:C:174:GLU:H	1.86	0.41
1:A:293:ARG:NH1	1:A:293:ARG:HG3	2.35	0.41
1:C:293:ARG:HG3	1:C:293:ARG:NH1	2.36	0.41
1:C:333:LEU:HA	1:C:333:LEU:HD12	1.79	0.41
1:C:254:ALA:HB3	1:C:330:LEU:HD21	2.03	0.40
1:A:337:GLU:O	1:A:341:VAL:HG22	2.22	0.40
1:C:289:LYS:O	1:C:293:ARG:HG2	2.21	0.40

There are no symmetry-related clashes.

## 5.3 Torsion angles [i](#)

### 5.3.1 Protein backbone [i](#)

In the following table, the Percentiles column shows the percent Ramachandran outliers of the chain as a percentile score with respect to all X-ray entries followed by that with respect to entries of similar resolution.

The Analysed column shows the number of residues for which the backbone conformation was analysed, and the total number of residues.

Mol	Chain	Analysed	Favoured	Allowed	Outliers	Percentiles
1	A	160/265 (60%)	141 (88%)	17 (11%)	2 (1%)	14 48

Continued on next page...

*Continued from previous page...*

Mol	Chain	Analysed	Favoured	Allowed	Outliers	Percentiles	
1	C	159/265 (60%)	139 (87%)	19 (12%)	1 (1%)	28	67
All	All	319/530 (60%)	280 (88%)	36 (11%)	3 (1%)	20	58

All (3) Ramachandran outliers are listed below:

Mol	Chain	Res	Type
1	A	175	LEU
1	C	175	LEU
1	A	262	ALA

### 5.3.2 Protein sidechains ⓘ

In the following table, the Percentiles column shows the percent sidechain outliers of the chain as a percentile score with respect to all X-ray entries followed by that with respect to entries of similar resolution.

The Analysed column shows the number of residues for which the sidechain conformation was analysed, and the total number of residues.

Mol	Chain	Analysed	Rotameric	Outliers	Percentiles	
1	A	142/231 (62%)	131 (92%)	11 (8%)	15	45
1	C	140/231 (61%)	129 (92%)	11 (8%)	14	43
All	All	282/462 (61%)	260 (92%)	22 (8%)	15	44

All (22) residues with a non-rotameric sidechain are listed below:

Mol	Chain	Res	Type
1	A	169	ARG
1	A	170	LEU
1	A	171	ILE
1	A	205	ASP
1	A	213	SER
1	A	275	SER
1	A	282	GLU
1	A	294	THR
1	A	330	LEU
1	A	331	ARG
1	A	342	THR
1	C	169	ARG
1	C	170	LEU

*Continued on next page...*

*Continued from previous page...*

Mol	Chain	Res	Type
1	C	171	ILE
1	C	205	ASP
1	C	213	SER
1	C	275	SER
1	C	282	GLU
1	C	294	THR
1	C	330	LEU
1	C	331	ARG
1	C	342	THR

Some sidechains can be flipped to improve hydrogen bonding and reduce clashes. There are no such sidechains identified.

### 5.3.3 RNA [i](#)

There are no RNA molecules in this entry.

## 5.4 Non-standard residues in protein, DNA, RNA chains [i](#)

There are no non-standard protein/DNA/RNA residues in this entry.

## 5.5 Carbohydrates [i](#)

There are no carbohydrates in this entry.

## 5.6 Ligand geometry [i](#)

1 ligand is modelled in this entry.

In the following table, the Counts columns list the number of bonds (or angles) for which Mogul statistics could be retrieved, the number of bonds (or angles) that are observed in the model and the number of bonds (or angles) that are defined in the chemical component dictionary. The Link column lists molecule types, if any, to which the group is linked. The Z score for a bond length (or angle) is the number of standard deviations the observed value is removed from the expected value. A bond length (or angle) with  $|Z| > 2$  is considered an outlier worth inspection. RMSZ is the root-mean-square of all Z scores of the bond lengths (or angles).

Mol	Type	Chain	Res	Link	Bond lengths			Bond angles		
					Counts	RMSZ	$\# Z  > 2$	Counts	RMSZ	$\# Z  > 2$
2	C2E	A	401	-	44,52,52	2.16	13 (29%)	50,82,82	2.00	14 (28%)

In the following table, the Chirals column lists the number of chiral outliers, the number of chiral centers analysed, the number of these observed in the model and the number defined in the chemical component dictionary. Similar counts are reported in the Torsion and Rings columns. '-' means no outliers of that kind were identified.

Mol	Type	Chain	Res	Link	Chirals	Torsions	Rings
2	C2E	A	401	-	-	0/22/62/62	0/6/7/7

All (13) bond length outliers are listed below:

Mol	Chain	Res	Type	Atoms	Z	Observed(Å)	Ideal(Å)
2	A	401	C2E	C2'-C3'	-5.40	1.40	1.53
2	A	401	C2E	C2A-C3A	-5.27	1.41	1.53
2	A	401	C2E	C2'-C1'	-3.58	1.48	1.53
2	A	401	C2E	C3A-C4A	-2.99	1.44	1.52
2	A	401	C2E	O4'-C4'	-2.87	1.38	1.45
2	A	401	C2E	C3'-C4'	-2.61	1.45	1.52
2	A	401	C2E	O5'-C5'	-2.48	1.35	1.44
2	A	401	C2E	P1-O1P	2.06	1.58	1.50
2	A	401	C2E	P11-O11	2.32	1.59	1.50
2	A	401	C2E	O61-C61	2.62	1.31	1.24
2	A	401	C2E	C21-N21	4.24	1.42	1.34
2	A	401	C2E	C2-N2	4.39	1.43	1.34
2	A	401	C2E	O6-C6	4.42	1.35	1.24

All (14) bond angle outliers are listed below:

Mol	Chain	Res	Type	Atoms	Z	Observed(°)	Ideal(°)
2	A	401	C2E	C5-C6-N1	-4.50	117.08	123.48
2	A	401	C2E	N3-C2-N1	-4.03	121.57	127.46
2	A	401	C2E	C51-C61-N11	-3.80	118.07	123.48
2	A	401	C2E	C4A-O4A-C1A	-3.49	106.06	109.77
2	A	401	C2E	N31-C21-N11	-3.43	122.45	127.46
2	A	401	C2E	C4-C5-N7	-2.95	106.56	109.41
2	A	401	C2E	O4A-C4A-C3A	-2.68	98.90	104.81
2	A	401	C2E	C41-C51-N71	-2.53	106.97	109.41
2	A	401	C2E	C1A-N91-C41	2.00	130.10	126.64
2	A	401	C2E	O5A-C5A-C4A	2.27	117.05	109.00
2	A	401	C2E	C61-N11-C21	3.22	120.69	116.06
2	A	401	C2E	C2-N3-C4	4.11	119.95	115.16
2	A	401	C2E	C6-N1-C2	4.29	122.22	116.06
2	A	401	C2E	C21-N31-C41	4.43	120.33	115.16

There are no chirality outliers.

There are no torsion outliers.

There are no ring outliers.

1 monomer is involved in 1 short contact:

Mol	Chain	Res	Type	Clashes	Symm-Clashes
2	A	401	C2E	1	0

## 5.7 Other polymers [i](#)

There are no such residues in this entry.

## 5.8 Polymer linkage issues [i](#)

There are no chain breaks in this entry.

## 6 Fit of model and data [i](#)

### 6.1 Protein, DNA and RNA chains [i](#)

In the following table, the column labelled ‘#RSRZ > 2’ contains the number (and percentage) of RSRZ outliers, followed by percent RSRZ outliers for the chain as percentile scores relative to all X-ray entries and entries of similar resolution. The OWAB column contains the minimum, median, 95<sup>th</sup> percentile and maximum values of the occupancy-weighted average B-factor per residue. The column labelled ‘Q < 0.9’ lists the number of (and percentage) of residues with an average occupancy less than 0.9.

Mol	Chain	Analysed	<RSRZ>	#RSRZ > 2		OWAB(Å <sup>2</sup> )	Q < 0.9
1	A	170/265 (64%)	0.51	5 (2%)	52 33	69, 89, 120, 140	2 (1%)
1	C	169/265 (63%)	0.50	5 (2%)	51 32	68, 89, 120, 133	2 (1%)
All	All	339/530 (63%)	0.50	10 (2%)	52 33	68, 89, 120, 140	4 (1%)

All (10) RSRZ outliers are listed below:

Mol	Chain	Res	Type	RSRZ
1	A	240	TYR	5.8
1	A	225	LEU	2.9
1	A	212	LEU	2.4
1	A	290	LEU	2.3
1	C	343	VAL	2.3
1	A	317	PRO	2.2
1	C	172	LEU	2.1
1	C	261	TYR	2.1
1	C	282	GLU	2.1
1	C	225	LEU	2.0

### 6.2 Non-standard residues in protein, DNA, RNA chains [i](#)

There are no non-standard protein/DNA/RNA residues in this entry.

### 6.3 Carbohydrates [i](#)

There are no carbohydrates in this entry.

## 6.4 Ligands [i](#)

In the following table, the Atoms column lists the number of modelled atoms in the group and the number defined in the chemical component dictionary. LLDF column lists the quality of electron density of the group with respect to its neighbouring residues in protein, DNA or RNA chains. The B-factors column lists the minimum, median, 95<sup>th</sup> percentile and maximum values of B factors of atoms in the group. The column labelled 'Q < 0.9' lists the number of atoms with occupancy less than 0.9.

Mol	Type	Chain	Res	Atoms	RSCC	RSR	LLDF	B-factors(Å <sup>2</sup> )	Q<0.9
2	C2E	A	401	46/46	0.94	0.17	-0.70	72,89,98,101	0

## 6.5 Other polymers [i](#)

There are no such residues in this entry.