



# Full wwPDB X-ray Structure Validation Report ⓘ

Mar 10, 2018 – 10:54 PM EST

PDB ID : 6F9U  
Title : Crystal structure of human testis Angiotensin-1 converting enzyme in complex with Sampatrilat-Asp.  
Authors : Cozier, G.E.; Acharya, K.R.  
Deposited on : 2017-12-15  
Resolution : 1.90 Å(reported)

This is a Full wwPDB X-ray Structure Validation Report for a publicly released PDB entry.

We welcome your comments at [validation@mail.wwpdb.org](mailto:validation@mail.wwpdb.org)

A user guide is available at

<http://wwpdb.org/validation/2016/XrayValidationReportHelp>

with specific help available everywhere you see the ⓘ symbol.

---

The following versions of software and data (see [references ⓘ](#)) were used in the production of this report:

MolProbity : 4.02b-467  
Mogul : 1.7.2 (RC1), CSD as538be (2017)  
Xtriage (Phenix) : 1.9-1692  
EDS : rb-20030736  
Percentile statistics : 20161228.v01 (using entries in the PDB archive December 28th 2016)  
Refmac : 5.8.0135  
CCP4 : 6.5.0  
Ideal geometry (proteins) : Engh & Huber (2001)  
Ideal geometry (DNA, RNA) : Parkinson et al. (1996)  
Validation Pipeline (wwPDB-VP) : rb-20030736

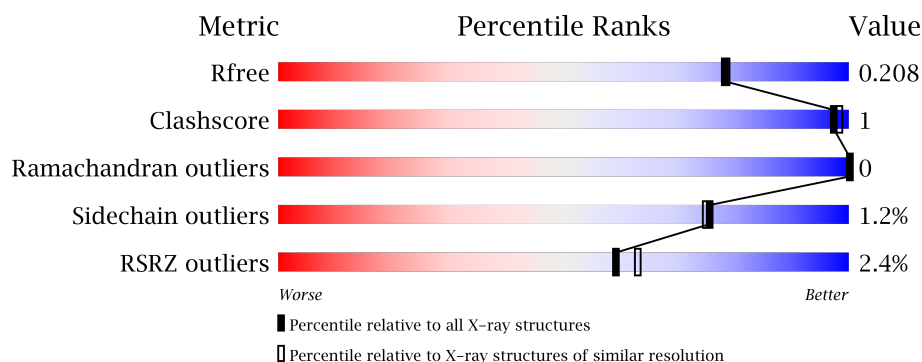
# 1 Overall quality at a glance

The following experimental techniques were used to determine the structure:

*X-RAY DIFFRACTION*

The reported resolution of this entry is 1.90 Å.

Percentile scores (ranging between 0-100) for global validation metrics of the entry are shown in the following graphic. The table shows the number of entries on which the scores are based.



Metric	Whole archive (#Entries)	Similar resolution (#Entries, resolution range(Å))
$R_{free}$	100719	5047 (1.90-1.90)
Clashscore	112137	5731 (1.90-1.90)
Ramachandran outliers	110173	5669 (1.90-1.90)
Sidechain outliers	110143	5670 (1.90-1.90)
RSRZ outliers	101464	5100 (1.90-1.90)

The table below summarises the geometric issues observed across the polymeric chains and their fit to the electron density. The red, orange, yellow and green segments on the lower bar indicate the fraction of residues that contain outliers for  $\geq 3$ , 2, 1 and 0 types of geometric quality criteria. A grey segment represents the fraction of residues that are not modelled. The numeric value for each fraction is indicated below the corresponding segment, with a dot representing fractions  $\leq 5\%$ . The upper red bar (where present) indicates the fraction of residues that have poor fit to the electron density. The numeric value is given above the bar.

Mol	Chain	Length	Quality of chain
1	A	591	<div> <div>2%</div> <div>95%</div> <div>..</div> </div>

The following table lists non-polymeric compounds, carbohydrate monomers and non-standard residues in protein, DNA, RNA chains that are outliers for geometric or electron-density-fit criteria:

Mol	Type	Chain	Res	Chirality	Geometry	Clashes	Electron density
10	BO3	A	712	-	-	-	X
11	IMD	A	714	-	-	-	X

*Continued on next page...*

*Continued from previous page...*

Mol	Type	Chain	Res	Chirality	Geometry	Clashes	Electron density
12	EDO	A	718	-	-	-	X
12	EDO	A	719	-	-	-	X
13	PEG	A	721	-	-	-	X
9	D0W	A	711	-	-	-	X

## 2 Entry composition [i](#)

There are 14 unique types of molecules in this entry. The entry contains 10143 atoms, of which 4812 are hydrogens and 0 are deuteriums.

In the tables below, the ZeroOcc column contains the number of atoms modelled with zero occupancy, the AltConf column contains the number of residues with at least one atom in alternate conformation and the Trace column contains the number of residues modelled with at most 2 atoms.

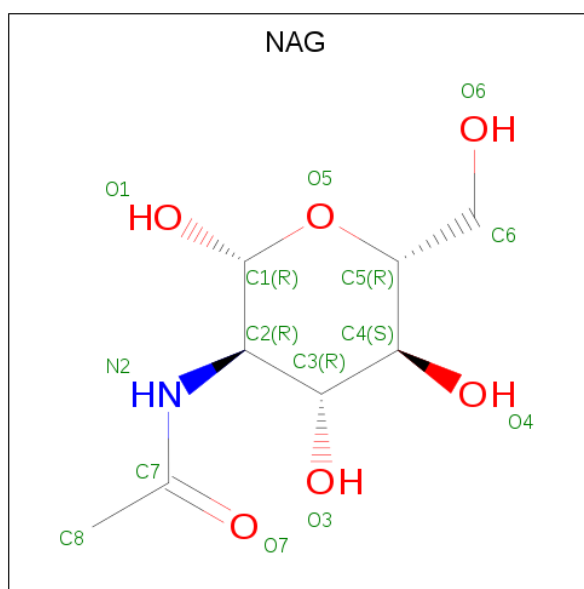
- Molecule 1 is a protein called Angiotensin-converting enzyme.

Mol	Chain	Residues	Atoms						ZeroOcc	AltConf	Trace
			Total	C	H	N	O	S			
1	A	586	9447	3081	4636	821	885	24	0	6	0

There are 5 discrepancies between the modelled and reference sequences:

Chain	Residue	Modelled	Actual	Comment	Reference
A	64	GLY	GLU	conflict	UNP P12821
A	90	GLN	ASN	conflict	UNP P12821
A	155	GLN	ASN	conflict	UNP P12821
A	337	GLN	ASN	conflict	UNP P12821
A	586	GLN	ASN	conflict	UNP P12821

- Molecule 2 is N-ACETYL-D-GLUCOSAMINE (three-letter code: NAG) (formula:  $C_8H_{15}NO_6$ ).



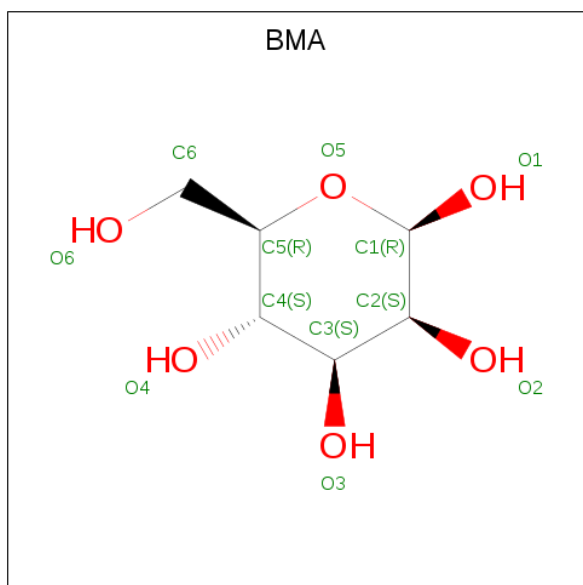
Mol	Chain	Residues	Atoms					ZeroOcc	AltConf
			Total	C	H	N	O		
2	A	1	25	8	11	1	5	0	0

*Continued on next page...*

*Continued from previous page...*

Mol	Chain	Residues	Atoms					ZeroOcc	AltConf
2	A	1	Total	C	H	N	O	0	0
			26	8	12	1	5		
2	A	1	Total	C	H	N	O	0	0
			27	8	13	1	5		

- Molecule 3 is BETA-D-MANNOSE (three-letter code: BMA) (formula:  $C_6H_{12}O_6$ ).



Mol	Chain	Residues	Atoms				ZeroOcc	AltConf
3	A	1	Total	C	H	O	0	0
			20	6	9	5		

- Molecule 4 is ALPHA-L-FUCOSE (three-letter code: FUC) (formula:  $C_6H_{12}O_5$ ).



Mol	Chain	Residues	Atoms				ZeroOcc	AltConf
4	A	1	Total	C	H	O	0	0
			20	6	10	4		

- Molecule 5 is ALPHA-D-MANNOSE (three-letter code: MAN) (formula:  $C_6H_{12}O_6$ ).



Mol	Chain	Residues	Atoms				ZeroOcc	AltConf
5	A	1	Total	C	H	O	0	0
			21	6	10	5		

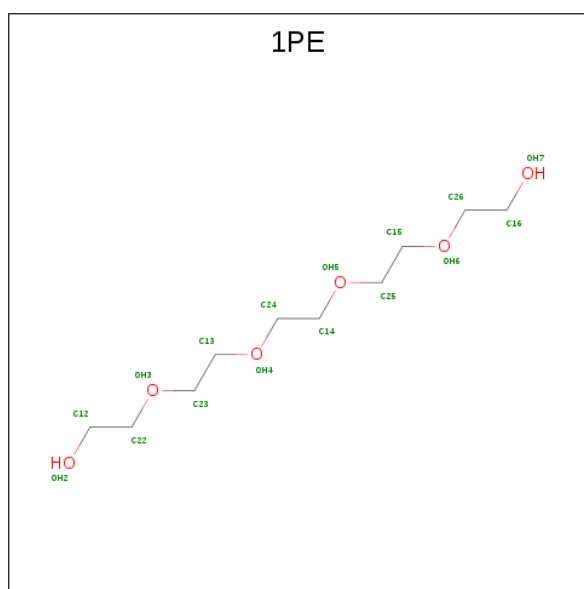
- Molecule 6 is ZINC ION (three-letter code: ZN) (formula:  $Zn$ ).

Mol	Chain	Residues	Atoms		ZeroOcc	AltConf
6	A	1	Total	Zn	0	0
			1	1		

- Molecule 7 is CHLORIDE ION (three-letter code: CL) (formula: Cl).

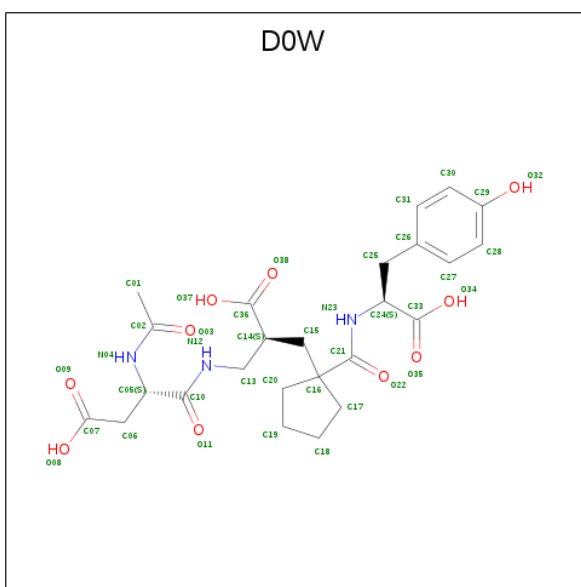
Mol	Chain	Residues	Atoms		ZeroOcc	AltConf
7	A	2	Total	Cl	0	0
			2	2		

- Molecule 8 is PENTAETHYLENE GLYCOL (three-letter code: 1PE) (formula: C<sub>10</sub>H<sub>22</sub>O<sub>6</sub>).



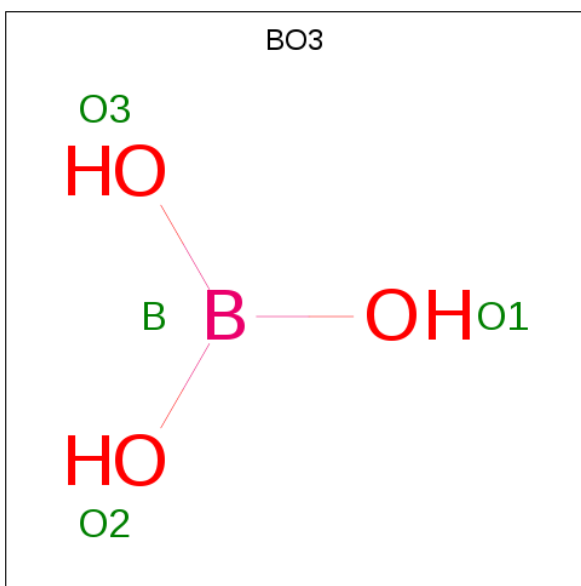
Mol	Chain	Residues	Atoms				ZeroOcc	AltConf
8	A	1	Total	C	H	O	0	0
			38	10	22	6		

- Molecule 9 is Sampatrilat-Asp (three-letter code: D0W) (formula: C<sub>25</sub>H<sub>33</sub>N<sub>3</sub>O<sub>10</sub>).



Mol	Chain	Residues	Atoms					ZeroOcc	AltConf
9	A	1	Total	C	H	N	O	0	0
			68	25	30	3	10		

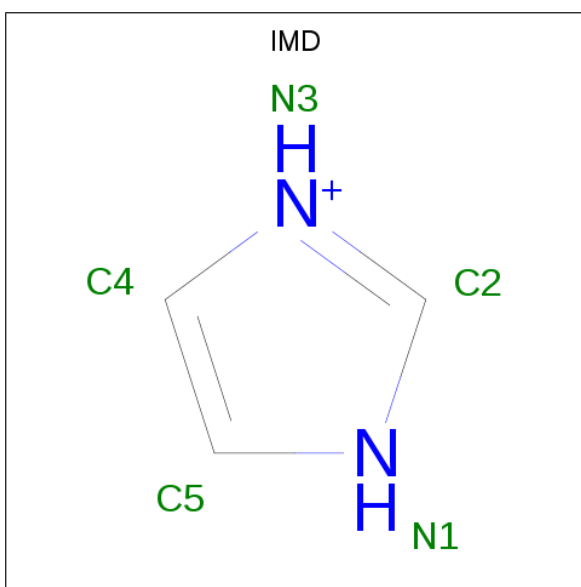
- Molecule 10 is BORIC ACID (three-letter code: BO3) (formula:  $\text{BH}_3\text{O}_3$ ).



Mol	Chain	Residues	Atoms				ZeroOcc	AltConf
10	A	1	Total	B	H	O	0	0
			7	1	3	3		

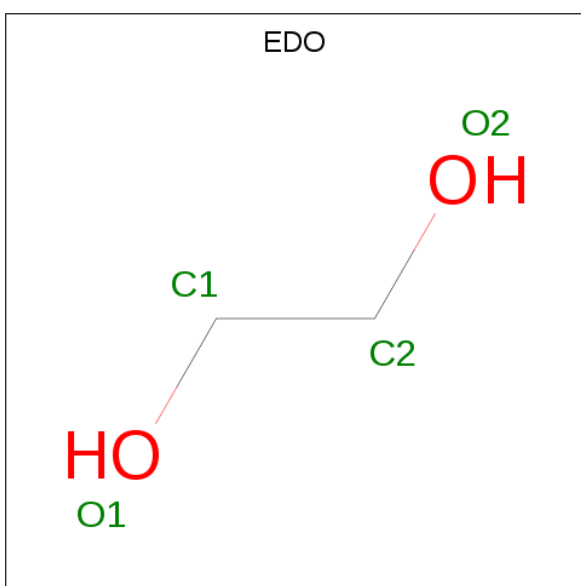
- Molecule 11 is IMIDAZOLE (three-letter code: IMD) (formula:  $\text{C}_3\text{H}_5\text{N}_2$ ).





Mol	Chain	Residues	Atoms				ZeroOcc	AltConf
11	A	1	Total	C	H	N	0	0
			10	3	5	2		
11	A	1	Total	C	H	N	0	0
			10	3	5	2		

- Molecule 12 is 1,2-ETHANEDIOL (three-letter code: EDO) (formula: C<sub>2</sub>H<sub>6</sub>O<sub>2</sub>).



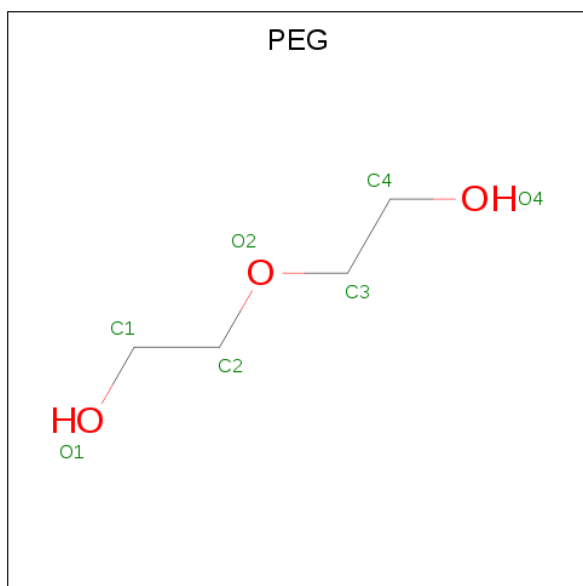
Mol	Chain	Residues	Atoms				ZeroOcc	AltConf
12	A	1	Total	C	H	O	0	0
			10	2	6	2		
12	A	1	Total	C	H	O	0	0
			10	2	6	2		

*Continued on next page...*

Continued from previous page...

Mol	Chain	Residues	Atoms				ZeroOcc	AltConf
12	A	1	Total	C	H	O	0	0
			10	2	6	2		
12	A	1	Total	C	H	O	0	0
			10	2	6	2		
12	A	1	Total	C	H	O	0	0
			10	2	6	2		
12	A	1	Total	C	H	O	0	0
			10	2	6	2		

- Molecule 13 is DI(HYDROXYETHYL)ETHER (three-letter code: PEG) (formula:  $C_4H_{10}O_3$ ).



Mol	Chain	Residues	Atoms				ZeroOcc	AltConf
13	A	1	Total	C	H	O	0	0
			17	4	10	3		

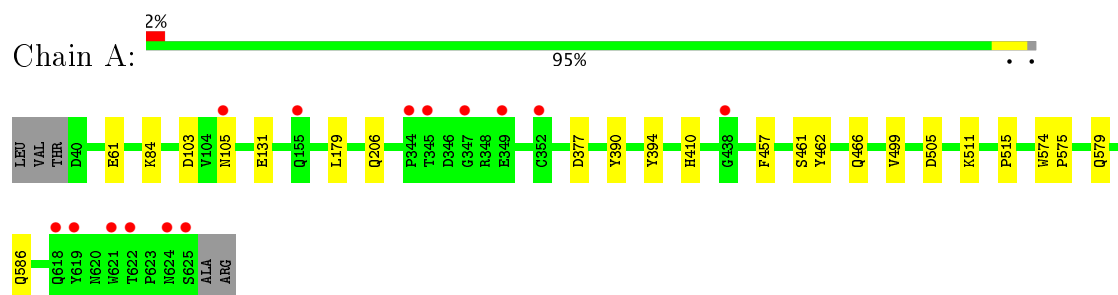
- Molecule 14 is water.

Mol	Chain	Residues	Atoms		ZeroOcc	AltConf
14	A	341	Total	O	0	3
			344	344		

### 3 Residue-property plots [i](#)

These plots are drawn for all protein, RNA and DNA chains in the entry. The first graphic for a chain summarises the proportions of the various outlier classes displayed in the second graphic. The second graphic shows the sequence view annotated by issues in geometry and electron density. Residues are color-coded according to the number of geometric quality criteria for which they contain at least one outlier: green = 0, yellow = 1, orange = 2 and red = 3 or more. A red dot above a residue indicates a poor fit to the electron density ( $RSRZ > 2$ ). Stretches of 2 or more consecutive residues without any outlier are shown as a green connector. Residues present in the sample, but not in the model, are shown in grey.

- Molecule 1: Angiotensin-converting enzyme



## 4 Data and refinement statistics

Property	Value	Source
Space group	P 21 21 21	Depositor
Cell constants a, b, c, $\alpha$ , $\beta$ , $\gamma$	56.32Å 85.86Å 133.23Å 90.00° 90.00° 90.00°	Depositor
Resolution (Å)	72.17 – 1.90 72.17 – 1.90	Depositor EDS
% Data completeness (in resolution range)	99.9 (72.17-1.90) 99.9 (72.17-1.90)	Depositor EDS
$R_{merge}$	(Not available)	Depositor
$R_{sym}$	(Not available)	Depositor
$\langle I/\sigma(I) \rangle$ <sup>1</sup>	1.62 (at 1.90Å)	Xtriage
Refinement program	PHENIX (1.12_2829: ???)	Depositor
R, $R_{free}$	0.167 , 0.209 0.166 , 0.208	Depositor DCC
$R_{free}$ test set	2597 reflections (5.03%)	DCC
Wilson B-factor (Å <sup>2</sup> )	25.8	Xtriage
Anisotropy	0.141	Xtriage
Bulk solvent $k_{sol}$ (e/Å <sup>3</sup> ), $B_{sol}$ (Å <sup>2</sup> )	0.41 , 48.5	EDS
L-test for twinning <sup>2</sup>	$\langle  L  \rangle = 0.51$ , $\langle L^2 \rangle = 0.34$	Xtriage
Estimated twinning fraction	No twinning to report.	Xtriage
$F_o, F_c$ correlation	0.96	EDS
Total number of atoms	10143	wwPDB-VP
Average B, all atoms (Å <sup>2</sup> )	35.0	wwPDB-VP

Xtriage's analysis on translational NCS is as follows: *The largest off-origin peak in the Patterson function is 5.27% of the height of the origin peak. No significant pseudotranslation is detected.*

<sup>1</sup>Intensities estimated from amplitudes.

<sup>2</sup>Theoretical values of  $\langle |L| \rangle$ ,  $\langle L^2 \rangle$  for acentric reflections are 0.5, 0.333 respectively for untwinned datasets, and 0.375, 0.2 for perfectly twinned datasets.

## 5 Model quality

### 5.1 Standard geometry

Bond lengths and bond angles in the following residue types are not validated in this section: D0W, ZN, BMA, NAG, CL, BO3, EDO, 1PE, FUC, IMD, PEG, MAN

The Z score for a bond length (or angle) is the number of standard deviations the observed value is removed from the expected value. A bond length (or angle) with  $|Z| > 5$  is considered an outlier worth inspection. RMSZ is the root-mean-square of all Z scores of the bond lengths (or angles).

Mol	Chain	Bond lengths		Bond angles	
		RMSZ	$\# Z  > 5$	RMSZ	$\# Z  > 5$
1	A	0.39	0/4976	0.54	0/6767

There are no bond length outliers.

There are no bond angle outliers.

There are no chirality outliers.

There are no planarity outliers.

### 5.2 Too-close contacts

In the following table, the Non-H and H(model) columns list the number of non-hydrogen atoms and hydrogen atoms in the chain respectively. The H(added) column lists the number of hydrogen atoms added and optimized by MolProbity. The Clashes column lists the number of clashes within the asymmetric unit, whereas Symm-Clashes lists symmetry related clashes.

Mol	Chain	Non-H	H(model)	H(added)	Clashes	Symm-Clashes
1	A	4811	4636	4614	9	0
2	A	42	36	36	0	0
3	A	11	9	9	0	0
4	A	10	10	10	0	0
5	A	11	10	10	0	0
6	A	1	0	0	0	0
7	A	2	0	0	0	0
8	A	16	22	22	0	0
9	A	38	30	0	1	0
10	A	4	3	3	0	0
11	A	10	10	10	1	0
12	A	24	36	36	0	0
13	A	7	10	10	0	0

*Continued on next page...*

*Continued from previous page...*

Mol	Chain	Non-H	H(model)	H(added)	Clashes	Symm-Clashes
14	A	344	0	0	0	0
All	All	5331	4812	4760	10	0

The all-atom clashscore is defined as the number of clashes found per 1000 atoms (including hydrogen atoms). The all-atom clashscore for this structure is 1.

All (10) close contacts within the same asymmetric unit are listed below, sorted by their clash magnitude.

Atom-1	Atom-2	Interatomic distance (Å)	Clash overlap (Å)
1:A:505:ASP:OD2	11:A:714:IMD:H2	1.98	0.62
1:A:131:GLU:OE1	1:A:206:GLN:NE2	2.36	0.59
1:A:462:TYR:O	1:A:466:GLN:HG2	2.11	0.51
1:A:179:LEU:HD11	1:A:499:VAL:HG23	1.92	0.51
1:A:457:PHE:CE2	1:A:461:SER:HB3	2.51	0.45
1:A:511:LYS:O	1:A:515:PRO:HD2	2.18	0.43
1:A:103:ASP:OD1	1:A:105:ASN:HB2	2.18	0.42
1:A:61:GLU:OE1	1:A:84:LYS:NZ	2.52	0.42
1:A:574:TRP:N	1:A:575:PRO:CD	2.82	0.42
9:A:711:D0W:C20	9:A:711:D0W:C36	2.98	0.42

There are no symmetry-related clashes.

## 5.3 Torsion angles [i](#)

### 5.3.1 Protein backbone [i](#)

In the following table, the Percentiles column shows the percent Ramachandran outliers of the chain as a percentile score with respect to all X-ray entries followed by that with respect to entries of similar resolution.

The Analysed column shows the number of residues for which the backbone conformation was analysed, and the total number of residues.

Mol	Chain	Analysed	Favoured	Allowed	Outliers	Percentiles	
1	A	590/591 (100%)	579 (98%)	11 (2%)	0	100	100

There are no Ramachandran outliers to report.

### 5.3.2 Protein sidechains [i](#)

In the following table, the Percentiles column shows the percent sidechain outliers of the chain as a percentile score with respect to all X-ray entries followed by that with respect to entries of similar resolution.

The Analysed column shows the number of residues for which the sidechain conformation was analysed, and the total number of residues.

Mol	Chain	Analysed	Rotameric	Outliers	Percentiles	
1	A	517/515 (100%)	511 (99%)	6 (1%)	75	75

All (6) residues with a non-rotameric sidechain are listed below:

Mol	Chain	Res	Type
1	A	377	ASP
1	A	390	TYR
1	A	394	TYR
1	A	410	HIS
1	A	579	GLN
1	A	586	GLN

Some sidechains can be flipped to improve hydrogen bonding and reduce clashes. There are no such sidechains identified.

### 5.3.3 RNA [i](#)

There are no RNA molecules in this entry.

## 5.4 Non-standard residues in protein, DNA, RNA chains [i](#)

There are no non-standard protein/DNA/RNA residues in this entry.

## 5.5 Carbohydrates [i](#)

There are no carbohydrates in this entry.

## 5.6 Ligand geometry [i](#)

Of 21 ligands modelled in this entry, 3 are monoatomic - leaving 18 for Mogul analysis.

In the following table, the Counts columns list the number of bonds (or angles) for which Mogul statistics could be retrieved, the number of bonds (or angles) that are observed in the model and

the number of bonds (or angles) that are defined in the Chemical Component Dictionary. The Link column lists molecule types, if any, to which the group is linked. The Z score for a bond length (or angle) is the number of standard deviations the observed value is removed from the expected value. A bond length (or angle) with  $|Z| > 2$  is considered an outlier worth inspection. RMSZ is the root-mean-square of all Z scores of the bond lengths (or angles).

Mol	Type	Chain	Res	Link	Bond lengths			Bond angles		
					Counts	RMSZ	$\# Z  > 2$	Counts	RMSZ	$\# Z  > 2$
2	NAG	A	701	1,2,4	14,14,15	0.39	0	15,19,21	0.46	0
2	NAG	A	702	3,2	14,14,15	0.47	0	15,19,21	0.46	0
3	BMA	A	703	2,5	11,11,12	0.69	0	13,15,17	0.92	1 (7%)
4	FUC	A	704	2	9,10,11	0.83	0	13,14,16	0.89	0
5	MAN	A	705	3	11,11,12	1.68	2 (18%)	13,15,17	1.90	4 (30%)
2	NAG	A	706	1	14,14,15	0.30	0	15,19,21	0.73	1 (6%)
8	1PE	A	710	-	15,15,15	0.58	0	14,14,14	0.42	0
9	D0W	A	711	6	29,39,39	2.58	8 (27%)	34,54,54	1.45	5 (14%)
10	BO3	A	712	-	3,3,3	0.42	0	3,3,3	0.24	0
11	IMD	A	713	-	5,5,5	1.45	2 (40%)	5,5,5	0.15	0
11	IMD	A	714	-	5,5,5	1.31	1 (20%)	5,5,5	0.25	0
12	EDO	A	715	-	3,3,3	0.48	0	2,2,2	0.27	0
12	EDO	A	716	-	3,3,3	0.36	0	2,2,2	0.48	0
12	EDO	A	717	-	3,3,3	0.47	0	2,2,2	0.31	0
12	EDO	A	718	-	3,3,3	0.58	0	2,2,2	0.10	0
12	EDO	A	719	-	3,3,3	0.52	0	2,2,2	0.25	0
12	EDO	A	720	-	3,3,3	0.48	0	2,2,2	0.34	0
13	PEG	A	721	-	6,6,6	0.49	0	5,5,5	0.23	0

In the following table, the Chirals column lists the number of chiral outliers, the number of chiral centers analysed, the number of these observed in the model and the number defined in the Chemical Component Dictionary. Similar counts are reported in the Torsion and Rings columns. '-' means no outliers of that kind were identified.

Mol	Type	Chain	Res	Link	Chirals	Torsions	Rings
2	NAG	A	701	1,2,4	-	0/6/23/26	0/1/1/1
2	NAG	A	702	3,2	-	0/6/23/26	0/1/1/1
3	BMA	A	703	2,5	-	0/2/19/22	0/1/1/1
4	FUC	A	704	2	-	0/0/17/20	0/1/1/1
5	MAN	A	705	3	-	0/2/19/22	0/1/1/1
2	NAG	A	706	1	-	0/6/23/26	0/1/1/1
8	1PE	A	710	-	-	0/13/13/13	0/0/0/0
9	D0W	A	711	6	-	0/34/53/53	0/2/2/2
10	BO3	A	712	-	-	0/0/0/0	0/0/0/0
11	IMD	A	713	-	-	0/0/0/0	0/1/1/1
11	IMD	A	714	-	-	0/0/0/0	0/1/1/1

*Continued on next page...*



*Continued from previous page...*

Mol	Type	Chain	Res	Link	Chirals	Torsions	Rings
12	EDO	A	715	-	-	0/1/1/1	0/0/0/0
12	EDO	A	716	-	-	0/1/1/1	0/0/0/0
12	EDO	A	717	-	-	0/1/1/1	0/0/0/0
12	EDO	A	718	-	-	0/1/1/1	0/0/0/0
12	EDO	A	719	-	-	0/1/1/1	0/0/0/0
12	EDO	A	720	-	-	0/1/1/1	0/0/0/0
13	PEG	A	721	-	-	0/4/4/4	0/0/0/0

All (13) bond length outliers are listed below:

Mol	Chain	Res	Type	Atoms	Z	Observed(Å)	Ideal(Å)
9	A	711	D0W	C20-C16	-6.71	1.39	1.54
9	A	711	D0W	O11-C10	-2.50	1.18	1.23
9	A	711	D0W	C17-C18	2.08	1.59	1.52
11	A	714	IMD	C2-N3	2.13	1.35	1.31
11	A	713	IMD	C2-N3	2.16	1.35	1.31
11	A	713	IMD	C2-N1	2.26	1.36	1.31
9	A	711	D0W	C02-N04	3.39	1.46	1.34
9	A	711	D0W	C17-C16	3.55	1.62	1.54
5	A	705	MAN	C1-C2	3.72	1.61	1.52
5	A	705	MAN	C2-C3	3.79	1.57	1.52
9	A	711	D0W	C20-C19	4.87	1.68	1.52
9	A	711	D0W	C21-N23	5.14	1.44	1.34
9	A	711	D0W	C10-N12	6.94	1.47	1.33

All (11) bond angle outliers are listed below:

Mol	Chain	Res	Type	Atoms	Z	Observed(°)	Ideal(°)
9	A	711	D0W	C06-C05-N04	-2.87	104.72	110.80
9	A	711	D0W	O03-C02-C01	-2.37	117.74	122.06
5	A	705	MAN	O2-C2-C3	-2.01	106.22	110.17
3	A	703	BMA	O2-C2-C3	-2.00	106.24	110.17
9	A	711	D0W	C19-C20-C16	2.33	107.77	104.95
2	A	706	NAG	C1-O5-C5	2.36	115.42	112.17
5	A	705	MAN	O5-C1-C2	2.83	115.22	110.79
9	A	711	D0W	C05-C10-N12	2.93	122.50	116.51
5	A	705	MAN	C1-O5-C5	3.34	116.77	112.17
9	A	711	D0W	C01-C02-N04	3.95	123.23	116.11
5	A	705	MAN	C1-C2-C3	3.98	114.69	109.65

There are no chirality outliers.

There are no torsion outliers.

There are no ring outliers.

2 monomers are involved in 2 short contacts:

Mol	Chain	Res	Type	Clashes	Symm-Clashes
9	A	711	D0W	1	0
11	A	714	IMD	1	0

## 5.7 Other polymers [i](#)

There are no such residues in this entry.

## 5.8 Polymer linkage issues [i](#)

There are no chain breaks in this entry.

## 6 Fit of model and data [i](#)

### 6.1 Protein, DNA and RNA chains [i](#)

In the following table, the column labelled ‘#RSRZ> 2’ contains the number (and percentage) of RSRZ outliers, followed by percent RSRZ outliers for the chain as percentile scores relative to all X-ray entries and entries of similar resolution. The OWAB column contains the minimum, median, 95<sup>th</sup> percentile and maximum values of the occupancy-weighted average B-factor per residue. The column labelled ‘Q< 0.9’ lists the number of (and percentage) of residues with an average occupancy less than 0.9.

Mol	Chain	Analysed	<RSRZ>	#RSRZ>2	OWAB(Å <sup>2</sup> )	Q<0.9
1	A	586/591 (99%)	0.15	14 (2%) 59 63	15, 28, 56, 84	0

All (14) RSRZ outliers are listed below:

Mol	Chain	Res	Type	RSRZ
1	A	345	THR	4.2
1	A	347	GLY	4.0
1	A	625	SER	3.9
1	A	622	THR	3.6
1	A	618	GLN	3.1
1	A	621	TRP	3.0
1	A	624	ASN	3.0
1	A	105	ASN	2.8
1	A	619	TYR	2.8
1	A	438	GLY	2.7
1	A	155	GLN	2.3
1	A	352	CYS	2.3
1	A	344	PRO	2.2
1	A	349	GLU	2.0

### 6.2 Non-standard residues in protein, DNA, RNA chains [i](#)

There are no non-standard protein/DNA/RNA residues in this entry.

### 6.3 Carbohydrates [i](#)

There are no carbohydrates in this entry.

## 6.4 Ligands [i](#)

In the following table, the Atoms column lists the number of modelled atoms in the group and the number defined in the chemical component dictionary. LLDF column lists the quality of electron density of the group with respect to its neighbouring residues in protein, DNA or RNA chains. The B-factors column lists the minimum, median, 95<sup>th</sup> percentile and maximum values of B factors of atoms in the group. The column labelled 'Q< 0.9' lists the number of atoms with occupancy less than 0.9.

Mol	Type	Chain	Res	Atoms	RSCC	RSR	LLDF	B-factors(Å <sup>2</sup> )	Q<0.9
13	PEG	A	721	7/7	0.56	0.29	6.54	55,67,93,93	0
11	IMD	A	714	5/5	0.91	0.20	4.95	44,58,69,73	0
12	EDO	A	718	4/4	0.74	0.32	4.57	46,65,79,79	0
9	D0W	A	711	38/38	0.94	0.15	4.17	18,32,75,89	0
10	BO3	A	712	4/4	0.94	0.17	3.57	34,41,47,57	0
12	EDO	A	719	4/4	0.71	0.25	2.97	50,60,76,76	0
7	CL	A	708	1/1	0.99	0.12	1.96	21,21,21,21	0
4	FUC	A	704	10/11	0.90	0.15	1.65	42,51,59,65	20
2	NAG	A	706	14/15	0.78	0.20	1.44	59,79,98,100	0
2	NAG	A	702	14/15	0.89	0.13	1.12	48,60,79,79	0
11	IMD	A	713	5/5	0.84	0.15	0.74	51,62,73,77	0
8	1PE	A	710	16/16	0.91	0.13	0.46	22,37,56,59	0
12	EDO	A	716	4/4	0.89	0.16	0.14	39,47,60,60	0
12	EDO	A	720	4/4	0.84	0.10	0.08	47,56,58,59	0
7	CL	A	709	1/1	1.00	0.09	-2.16	22,22,22,22	0
3	BMA	A	703	11/12	0.72	0.20	-	58,86,106,109	0
6	ZN	A	707	1/1	1.00	0.13	-	21,21,21,21	0
2	NAG	A	701	14/15	0.94	0.13	-	34,48,57,67	0
5	MAN	A	705	11/12	0.68	0.21	-	68,91,113,122	0
12	EDO	A	715	4/4	0.79	0.15	-	54,67,81,81	0
12	EDO	A	717	4/4	0.87	0.12	-	50,60,72,72	0

## 6.5 Other polymers [i](#)

There are no such residues in this entry.