



Full wwPDB X-ray Structure Validation Report ⓘ

Feb 14, 2017 – 09:16 am GMT

PDB ID : 4FCW
Title : Crystal structure of the C-terminal domain of ClpB
Authors : Biter, A.B.; Lee, S.; Sung, N.; Tsai, F.T.F.
Deposited on : 2012-05-25
Resolution : 2.35 Å(reported)

This is a Full wwPDB X-ray Structure Validation Report for a publicly released PDB entry.

We welcome your comments at validation@mail.wwpdb.org

A user guide is available at

<http://wwpdb.org/validation/2016/XrayValidationReportHelp>

with specific help available everywhere you see the ⓘ symbol.

The following versions of software and data (see [references ⓘ](#)) were used in the production of this report:

MolProbity : 4.02b-467
Mogul : 1.7.2 (RC1), CSD as538be (2017)
Xtriage (Phenix) : 1.9-1692
EDS : trunk28620
Percentile statistics : 20161228.v01 (using entries in the PDB archive December 28th 2016)
Refmac : 5.8.0135
CCP4 : 6.5.0
Ideal geometry (proteins) : Engh & Huber (2001)
Ideal geometry (DNA, RNA) : Parkinson et al. (1996)
Validation Pipeline (wwPDB-VP) : recalc28949

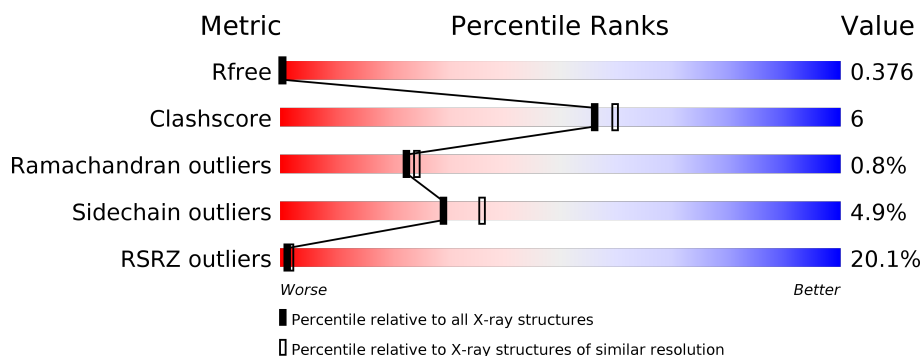
1 Overall quality at a glance

The following experimental techniques were used to determine the structure:

X-RAY DIFFRACTION

The reported resolution of this entry is 2.35 Å.

Percentile scores (ranging between 0-100) for global validation metrics of the entry are shown in the following graphic. The table shows the number of entries on which the scores are based.



Metric	Whole archive (#Entries)	Similar resolution (#Entries, resolution range(Å))
R_{free}	100719	1522 (2.38-2.34)
Clashscore	112137	1626 (2.38-2.34)
Ramachandran outliers	110173	1605 (2.38-2.34)
Sidechain outliers	110143	1606 (2.38-2.34)
RSRZ outliers	101464	1528 (2.38-2.34)

The table below summarises the geometric issues observed across the polymeric chains and their fit to the electron density. The red, orange, yellow and green segments on the lower bar indicate the fraction of residues that contain outliers for ≥ 3 , 2, 1 and 0 types of geometric quality criteria. A grey segment represents the fraction of residues that are not modelled. The numeric value for each fraction is indicated below the corresponding segment, with a dot representing fractions $\leq 5\%$. The upper red bar (where present) indicates the fraction of residues that have poor fit to the electron density. The numeric value is given above the bar.

Mol	Chain	Length	Quality of chain
1	A	311	<div> <div>18%</div> <div>86%</div> <div>13%</div> <div>.</div> </div>
1	C	311	<div> <div>17%</div> <div>82%</div> <div>14%</div> <div>..</div> </div>
1	F	311	<div> <div>24%</div> <div>83%</div> <div>14%</div> <div>..</div> </div>

The following table lists non-polymeric compounds, carbohydrate monomers and non-standard residues in protein, DNA, RNA chains that are outliers for geometric or electron-density-fit criteria:

Mol	Type	Chain	Res	Chirality	Geometry	Clashes	Electron density
2	ADP	A	901	-	-	-	X
2	ADP	C	901	-	-	-	X

2 Entry composition

There are 3 unique types of molecules in this entry. The entry contains 7472 atoms, of which 0 are hydrogens and 0 are deuteriums.

In the tables below, the ZeroOcc column contains the number of atoms modelled with zero occupancy, the AltConf column contains the number of residues with at least one atom in alternate conformation and the Trace column contains the number of residues modelled with at most 2 atoms.

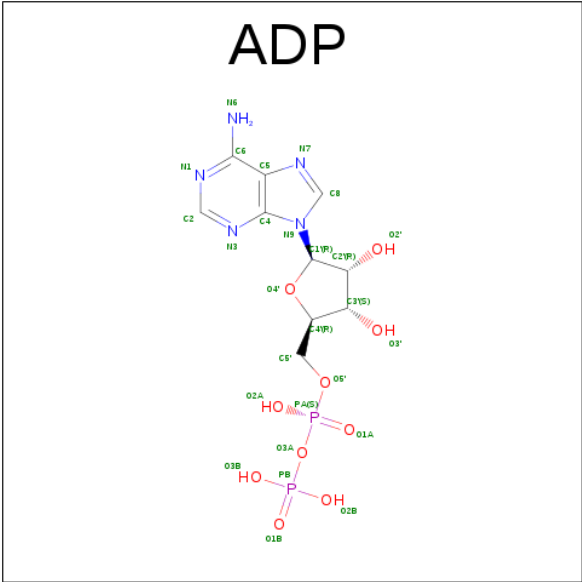
- Molecule 1 is a protein called Chaperone protein ClpB.

Mol	Chain	Residues	Atoms					ZeroOcc	AltConf	Trace
1	A	311	Total	C	N	O	Se	0	0	0
			2482	1575	449	451	7			
1	C	306	Total	C	N	O	Se	0	0	0
			2443	1548	444	444	7			
1	F	306	Total	C	N	O	Se	0	0	0
			2443	1548	444	444	7			

There are 18 discrepancies between the modelled and reference sequences:

Chain	Residue	Modelled	Actual	Comment	Reference
A	542	MSE	-	EXPRESSION TAG	UNP Q9RA63
A	543	LEU	-	EXPRESSION TAG	UNP Q9RA63
A	668	ALA	GLU	ENGINEERED MUTATION	UNP Q9RA63
A	683	MSE	ILE	ENGINEERED MUTATION	UNP Q9RA63
A	706	MSE	LEU	ENGINEERED MUTATION	UNP Q9RA63
A	770	MSE	LEU	ENGINEERED MUTATION	UNP Q9RA63
C	542	MSE	-	EXPRESSION TAG	UNP Q9RA63
C	543	LEU	-	EXPRESSION TAG	UNP Q9RA63
C	668	ALA	GLU	ENGINEERED MUTATION	UNP Q9RA63
C	683	MSE	ILE	ENGINEERED MUTATION	UNP Q9RA63
C	706	MSE	LEU	ENGINEERED MUTATION	UNP Q9RA63
C	770	MSE	LEU	ENGINEERED MUTATION	UNP Q9RA63
F	542	MSE	-	EXPRESSION TAG	UNP Q9RA63
F	543	LEU	-	EXPRESSION TAG	UNP Q9RA63
F	668	ALA	GLU	ENGINEERED MUTATION	UNP Q9RA63
F	683	MSE	ILE	ENGINEERED MUTATION	UNP Q9RA63
F	706	MSE	LEU	ENGINEERED MUTATION	UNP Q9RA63
F	770	MSE	LEU	ENGINEERED MUTATION	UNP Q9RA63

- Molecule 2 is ADENOSINE-5'-DIPHOSPHATE (three-letter code: ADP) (formula: $C_{10}H_{15}N_5O_{10}P_2$).



Mol	Chain	Residues	Atoms					ZeroOcc	AltConf
2	A	1	Total	C	N	O	P	0	0
			27	10	5	10	2		
2	C	1	Total	C	N	O	P	0	0
			27	10	5	10	2		
2	F	1	Total	C	N	O	P	0	0
			27	10	5	10	2		

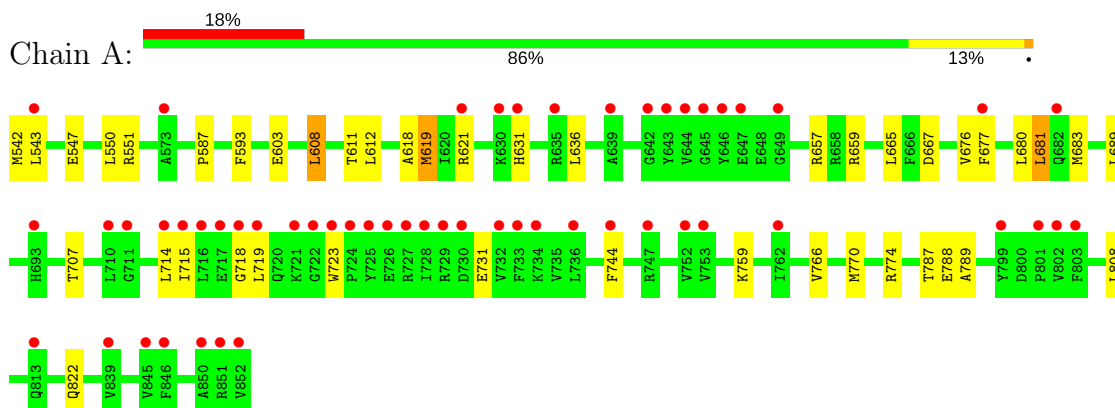
- Molecule 3 is water.

Mol	Chain	Residues	Atoms		ZeroOcc	AltConf
3	A	6	Total	O	0	0
			6	6		
3	C	5	Total	O	0	0
			5	5		
3	F	12	Total	O	0	0
			12	12		

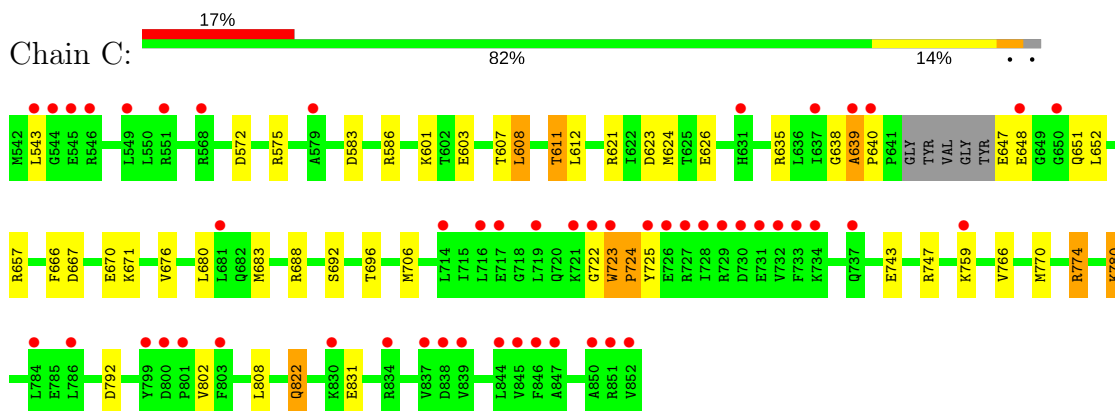
3 Residue-property plots

These plots are drawn for all protein, RNA and DNA chains in the entry. The first graphic for a chain summarises the proportions of the various outlier classes displayed in the second graphic. The second graphic shows the sequence view annotated by issues in geometry and electron density. Residues are color-coded according to the number of geometric quality criteria for which they contain at least one outlier: green = 0, yellow = 1, orange = 2 and red = 3 or more. A red dot above a residue indicates a poor fit to the electron density ($RSRZ > 2$). Stretches of 2 or more consecutive residues without any outlier are shown as a green connector. Residues present in the sample, but not in the model, are shown in grey.

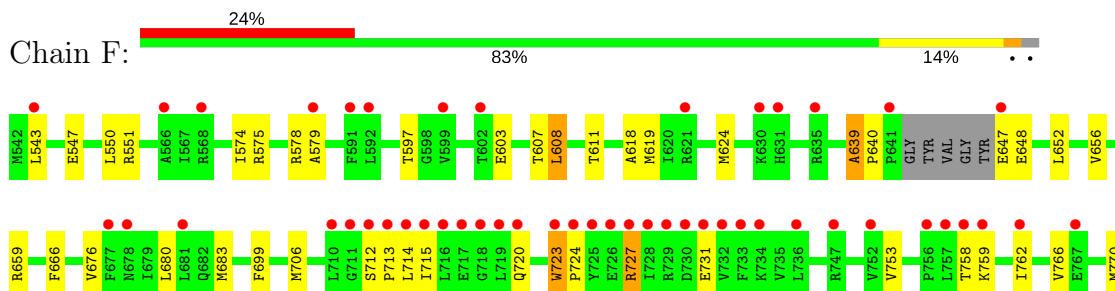
• Molecule 1: Chaperone protein ClpB

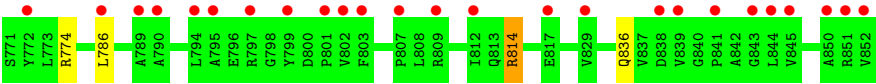


• Molecule 1: Chaperone protein ClpB



• Molecule 1: Chaperone protein ClpB





4 Data and refinement statistics

Property	Value	Source
Space group	P 65	Depositor
Cell constants a, b, c, α , β , γ	129.24Å 129.24Å 122.97Å 90.00° 90.00° 120.00°	Depositor
Resolution (Å)	44.55 – 2.35 44.54 – 2.35	Depositor EDS
% Data completeness (in resolution range)	99.4 (44.55-2.35) 99.6 (44.54-2.35)	Depositor EDS
R_{merge}	(Not available)	Depositor
R_{sym}	(Not available)	Depositor
$\langle I/\sigma(I) \rangle$ ¹	3.55 (at 2.34Å)	Xtriage
Refinement program	REFMAC 5.5.0109	Depositor
R, R_{free}	0.252 , 0.291 0.352 , 0.376	Depositor DCC
R_{free} test set	2119 reflections (4.40%)	DCC
Wilson B-factor (Å ²)	49.2	Xtriage
Anisotropy	0.225	Xtriage
Bulk solvent k_{sol} (e/Å ³), B_{sol} (Å ²)	0.33 , -11.1	EDS
L-test for twinning ²	$\langle L \rangle = 0.49$, $\langle L^2 \rangle = 0.31$	Xtriage
Estimated twinning fraction	0.348 for h,-h-k,-l	Xtriage
Reported twinning fraction	0.334 for H, K, L 0.666 for -H-K, K, -L	Depositor
Outliers	1 of 48207 reflections (0.002%)	Xtriage
F_o, F_c correlation	0.92	EDS
Total number of atoms	7472	wwPDB-VP
Average B, all atoms (Å ²)	19.0	wwPDB-VP

Xtriage's analysis on translational NCS is as follows: *The analyses of the Patterson function reveals a significant off-origin peak that is 48.65 % of the origin peak, indicating pseudo translational symmetry. The chance of finding a peak of this or larger height randomly in a structure without pseudo translational symmetry is equal to 8.3438e-05. The detected translational NCS is most likely also responsible for the elevated intensity ratio.*

¹Intensities estimated from amplitudes.

²Theoretical values of $\langle |L| \rangle$, $\langle L^2 \rangle$ for acentric reflections are 0.5, 0.333 respectively for untwinned datasets, and 0.375, 0.2 for perfectly twinned datasets.

5 Model quality

5.1 Standard geometry

Bond lengths and bond angles in the following residue types are not validated in this section: ADP

The Z score for a bond length (or angle) is the number of standard deviations the observed value is removed from the expected value. A bond length (or angle) with $|Z| > 5$ is considered an outlier worth inspection. RMSZ is the root-mean-square of all Z scores of the bond lengths (or angles).

Mol	Chain	Bond lengths		Bond angles	
		RMSZ	# Z >5	RMSZ	# Z >5
1	A	0.43	0/2518	0.61	0/3388
1	C	0.43	0/2476	0.64	0/3329
1	F	0.44	0/2476	0.65	0/3329
All	All	0.43	0/7470	0.63	0/10046

There are no bond length outliers.

There are no bond angle outliers.

There are no chirality outliers.

There are no planarity outliers.

5.2 Too-close contacts

In the following table, the Non-H and H(model) columns list the number of non-hydrogen atoms and hydrogen atoms in the chain respectively. The H(added) column lists the number of hydrogen atoms added and optimized by MolProbity. The Clashes column lists the number of clashes within the asymmetric unit, whereas Symm-Clashes lists symmetry related clashes.

Mol	Chain	Non-H	H(model)	H(added)	Clashes	Symm-Clashes
1	A	2482	0	2549	21	0
1	C	2443	0	2515	31	0
1	F	2443	0	2515	35	0
2	A	27	0	12	1	0
2	C	27	0	12	3	0
2	F	27	0	12	1	0
3	A	6	0	0	0	0
3	C	5	0	0	0	0
3	F	12	0	0	0	0
All	All	7472	0	7615	87	0

The all-atom clashscore is defined as the number of clashes found per 1000 atoms (including hydrogen atoms). The all-atom clashscore for this structure is 6.

All (87) close contacts within the same asymmetric unit are listed below, sorted by their clash magnitude.

Atom-1	Atom-2	Interatomic distance (Å)	Clash overlap (Å)
1:C:639:ALA:HB1	1:C:640:PRO:HD2	1.30	1.06
1:C:639:ALA:HB1	1:C:640:PRO:CD	1.96	0.95
1:C:774:ARG:HH11	1:C:774:ARG:HG3	1.42	0.82
1:F:715:ILE:CD1	1:F:753:VAL:CG1	2.64	0.75
1:F:774:ARG:HH11	1:F:774:ARG:HG3	1.52	0.74
1:F:814:ARG:HH11	1:F:814:ARG:HG2	1.54	0.72
1:A:774:ARG:HH11	1:A:774:ARG:HG3	1.55	0.70
1:F:715:ILE:CD1	1:F:753:VAL:HG13	2.22	0.70
1:F:578:ARG:O	1:F:579:ALA:HB3	1.92	0.69
1:F:715:ILE:CD1	1:F:753:VAL:HG11	2.23	0.69
1:F:715:ILE:HD13	1:F:753:VAL:HG13	1.76	0.68
1:A:603:GLU:HG2	2:A:901:ADP:H2'	1.80	0.63
1:F:715:ILE:HD11	1:F:753:VAL:HG11	1.79	0.62
1:F:666:PHE:HB2	1:F:706:MSE:HG2	1.80	0.62
1:C:639:ALA:CB	1:C:640:PRO:HD2	2.19	0.61
1:C:639:ALA:CB	1:C:640:PRO:CD	2.72	0.61
1:C:774:ARG:NH1	1:C:774:ARG:HG3	2.14	0.60
1:A:681:LEU:HD11	1:A:744:PHE:HA	1.84	0.59
1:F:639:ALA:HB1	1:F:640:PRO:CD	2.32	0.59
1:C:603:GLU:HG2	2:C:901:ADP:H2'	1.82	0.59
1:F:774:ARG:HG3	1:F:774:ARG:NH1	2.20	0.57
1:F:715:ILE:HD11	1:F:753:VAL:CG1	2.32	0.56
1:F:652:LEU:HD21	1:F:683:MSE:HE2	1.88	0.55
1:A:619:MSE:HE1	1:A:665:LEU:HB3	1.90	0.54
1:C:583:ASP:HB3	1:C:586:ARG:HD3	1.90	0.53
1:F:714:LEU:HD21	1:F:731:GLU:HG3	1.91	0.53
1:A:636:LEU:HD22	1:A:676:VAL:HG13	1.90	0.53
1:A:608:LEU:O	1:A:612:LEU:HB2	2.09	0.52
1:C:647:GLU:OE2	1:C:647:GLU:HA	2.10	0.52
1:C:608:LEU:O	1:C:612:LEU:HB2	2.11	0.51
1:C:624:MSE:HE2	1:C:676:VAL:HG11	1.92	0.51
1:F:766:VAL:O	1:F:770:MSE:HG2	2.11	0.51
1:A:766:VAL:O	1:A:770:MSE:HG2	2.12	0.50
1:C:572:ASP:OD1	1:C:575:ARG:NH2	2.40	0.50
1:A:719:LEU:O	1:A:719:LEU:HD12	2.12	0.49
1:F:575:ARG:O	1:F:578:ARG:O	2.31	0.49
1:A:715:ILE:O	1:A:718:GLY:O	2.31	0.48

Continued on next page...

Continued from previous page...

Atom-1	Atom-2	Interatomic distance (Å)	Clash overlap (Å)
1:F:770:MSE:HE1	1:F:786:LEU:HD13	1.95	0.48
1:C:652:LEU:HD21	1:C:683:MSE:HE2	1.95	0.48
1:F:656:VAL:HG21	1:F:699:PHE:CE2	2.49	0.48
1:C:638:GLY:HA3	1:C:692:SER:HB3	1.95	0.48
1:A:618:ALA:HA	1:A:659:ARG:HD3	1.94	0.47
1:F:618:ALA:HA	1:F:659:ARG:HD3	1.97	0.47
1:A:774:ARG:HG3	1:A:774:ARG:NH1	2.25	0.47
1:C:766:VAL:HG22	1:C:808:LEU:HD11	1.97	0.47
1:A:766:VAL:HG22	1:A:808:LEU:HD11	1.97	0.47
1:F:607:THR:O	1:F:611:THR:HG23	2.16	0.46
1:F:680:LEU:HA	1:F:683:MSE:HE3	1.96	0.46
1:F:814:ARG:NH1	1:F:814:ARG:HG2	2.27	0.46
1:F:574:ILE:CD1	1:F:608:LEU:HD21	2.46	0.46
1:A:719:LEU:CB	1:A:723:TRP:O	2.65	0.45
1:A:787:THR:HG22	1:A:789:ALA:H	1.81	0.45
1:C:607:THR:O	1:C:611:THR:HG22	2.16	0.45
1:F:603:GLU:HG2	2:F:901:ADP:H2'	1.97	0.45
1:C:666:PHE:HB2	1:C:706:MSE:HG2	1.99	0.45
1:F:724:PRO:HD2	1:F:727:ARG:HB3	1.99	0.45
1:C:723:TRP:HA	1:C:724:PRO:HD3	1.88	0.45
1:F:723:TRP:CB	1:F:724:PRO:CD	2.95	0.44
1:F:578:ARG:O	1:F:579:ALA:CB	2.56	0.44
1:F:758:THR:O	1:F:762:ILE:HG13	2.17	0.44
1:A:719:LEU:HB3	1:A:723:TRP:O	2.17	0.44
1:F:547:GLU:HG3	1:F:551:ARG:HH11	1.82	0.44
1:C:603:GLU:CG	2:C:901:ADP:H2'	2.48	0.44
1:F:640:PRO:O	1:F:647:GLU:OE2	2.36	0.44
1:C:670:GLU:HG2	1:C:671:LYS:HD2	2.00	0.44
1:C:680:LEU:HA	1:C:683:MSE:HE3	2.00	0.43
1:F:574:ILE:HD11	1:F:608:LEU:HD21	2.00	0.43
1:F:639:ALA:HB1	1:F:640:PRO:HD2	1.99	0.43
1:C:780:LYS:O	1:C:831:GLU:HG3	2.18	0.43
1:F:712:SER:HB2	1:F:713:PRO:HD3	2.00	0.43
1:A:621:ARG:NH1	1:A:667:ASP:OD1	2.52	0.43
1:A:683:MSE:HB2	1:A:689:LEU:HD13	1.99	0.43
1:C:608:LEU:HD22	1:C:612:LEU:HD22	2.01	0.43
1:A:714:LEU:HD21	1:A:731:GLU:HG3	2.00	0.42
1:C:623:ASP:O	1:C:626:GLU:HG2	2.20	0.42
1:C:766:VAL:O	1:C:770:MSE:HG2	2.20	0.42
1:A:718:GLY:HA2	1:A:719:LEU:HA	1.72	0.42
1:C:621:ARG:NH1	1:C:667:ASP:OD1	2.53	0.42

Continued on next page...

Continued from previous page...

Atom-1	Atom-2	Interatomic distance (Å)	Clash overlap (Å)
1:C:822:GLN:HB2	1:C:822:GLN:HE21	1.73	0.42
1:C:635:ARG:HA	1:C:638:GLY:O	2.20	0.41
1:C:743:GLU:O	1:C:747:ARG:HG2	2.21	0.41
1:A:547:GLU:HG3	1:A:551:ARG:HD3	2.03	0.41
1:F:624:MSE:HE2	1:F:676:VAL:HG11	2.02	0.41
1:F:759:LYS:H	1:F:759:LYS:HG2	1.75	0.41
1:C:722:GLY:HA2	1:C:723:TRP:HA	1.77	0.40
1:A:593:PHE:HB2	1:A:707:THR:HG22	2.04	0.40
1:C:601:LYS:HB2	2:C:901:ADP:O1B	2.21	0.40

There are no symmetry-related clashes.

5.3 Torsion angles [i](#)

5.3.1 Protein backbone [i](#)

In the following table, the Percentiles column shows the percent Ramachandran outliers of the chain as a percentile score with respect to all X-ray entries followed by that with respect to entries of similar resolution.

The Analysed column shows the number of residues for which the backbone conformation was analysed, and the total number of residues.

Mol	Chain	Analysed	Favoured	Allowed	Outliers	Percentiles	
1	A	309/311 (99%)	300 (97%)	9 (3%)	0	100	100
1	C	302/311 (97%)	292 (97%)	6 (2%)	4 (1%)	14	12
1	F	302/311 (97%)	284 (94%)	15 (5%)	3 (1%)	18	18
All	All	913/933 (98%)	876 (96%)	30 (3%)	7 (1%)	22	24

All (7) Ramachandran outliers are listed below:

Mol	Chain	Res	Type
1	F	648	GLU
1	F	723	TRP
1	C	648	GLU
1	C	639	ALA
1	C	724	PRO
1	C	725	TYR
1	F	639	ALA

5.3.2 Protein sidechains ⓘ

In the following table, the Percentiles column shows the percent sidechain outliers of the chain as a percentile score with respect to all X-ray entries followed by that with respect to entries of similar resolution.

The Analysed column shows the number of residues for which the sidechain conformation was analysed, and the total number of residues.

Mol	Chain	Analysed	Rotameric	Outliers	Percentiles	
1	A	262/255 (103%)	247 (94%)	15 (6%)	24	28
1	C	259/255 (102%)	245 (95%)	14 (5%)	26	31
1	F	259/255 (102%)	250 (96%)	9 (4%)	41	52
All	All	780/765 (102%)	742 (95%)	38 (5%)	29	36

All (38) residues with a non-rotameric sidechain are listed below:

Mol	Chain	Res	Type
1	A	542	MSE
1	A	543	LEU
1	A	550	LEU
1	A	587	PRO
1	A	608	LEU
1	A	611	THR
1	A	619	MSE
1	A	631	HIS
1	A	657	ARG
1	A	677	PHE
1	A	680	LEU
1	A	681	LEU
1	A	759	LYS
1	A	788	GLU
1	A	822	GLN
1	C	543	LEU
1	C	608	LEU
1	C	611	THR
1	C	651	GLN
1	C	657	ARG
1	C	688	ARG
1	C	696	THR
1	C	723	TRP
1	C	759	LYS
1	C	774	ARG
1	C	780	LYS

Continued on next page...

Continued from previous page...

Mol	Chain	Res	Type
1	C	792	ASP
1	C	802	VAL
1	C	822	GLN
1	F	543	LEU
1	F	550	LEU
1	F	597	THR
1	F	608	LEU
1	F	619	MSE
1	F	720	GLN
1	F	727	ARG
1	F	814	ARG
1	F	836	GLN

Some sidechains can be flipped to improve hydrogen bonding and reduce clashes. All (8) such sidechains are listed below:

Mol	Chain	Res	Type
1	A	557	HIS
1	A	822	GLN
1	C	557	HIS
1	C	737	GLN
1	C	746	ASN
1	C	822	GLN
1	F	746	ASN
1	F	822	GLN

5.3.3 RNA ⓘ

There are no RNA molecules in this entry.

5.4 Non-standard residues in protein, DNA, RNA chains ⓘ

There are no non-standard protein/DNA/RNA residues in this entry.

5.5 Carbohydrates ⓘ

There are no carbohydrates in this entry.

5.6 Ligand geometry

3 ligands are modelled in this entry.

In the following table, the Counts columns list the number of bonds (or angles) for which Mogul statistics could be retrieved, the number of bonds (or angles) that are observed in the model and the number of bonds (or angles) that are defined in the chemical component dictionary. The Link column lists molecule types, if any, to which the group is linked. The Z score for a bond length (or angle) is the number of standard deviations the observed value is removed from the expected value. A bond length (or angle) with $|Z| > 2$ is considered an outlier worth inspection. RMSZ is the root-mean-square of all Z scores of the bond lengths (or angles).

Mol	Type	Chain	Res	Link	Bond lengths			Bond angles		
					Counts	RMSZ	# $ Z > 2$	Counts	RMSZ	# $ Z > 2$
2	ADP	A	901	-	25,29,29	1.03	2 (8%)	24,45,45	1.86	4 (16%)
2	ADP	C	901	-	25,29,29	1.04	2 (8%)	24,45,45	1.84	4 (16%)
2	ADP	F	901	-	25,29,29	1.08	3 (12%)	24,45,45	1.72	3 (12%)

In the following table, the Chirals column lists the number of chiral outliers, the number of chiral centers analysed, the number of these observed in the model and the number defined in the chemical component dictionary. Similar counts are reported in the Torsion and Rings columns. '-' means no outliers of that kind were identified.

Mol	Type	Chain	Res	Link	Chirals	Torsions	Rings
2	ADP	A	901	-	-	0/12/32/32	0/3/3/3
2	ADP	C	901	-	-	0/12/32/32	0/3/3/3
2	ADP	F	901	-	-	0/12/32/32	0/3/3/3

All (7) bond length outliers are listed below:

Mol	Chain	Res	Type	Atoms	Z	Observed(Å)	Ideal(Å)
2	C	901	ADP	C2-N3	2.01	1.35	1.32
2	F	901	ADP	O4'-C1'	2.06	1.44	1.41
2	A	901	ADP	C2-N3	2.09	1.35	1.32
2	F	901	ADP	C2-N3	2.28	1.36	1.32
2	A	901	ADP	C5-C4	3.19	1.47	1.40
2	C	901	ADP	C5-C4	3.22	1.47	1.40
2	F	901	ADP	C5-C4	3.24	1.47	1.40

All (11) bond angle outliers are listed below:

Mol	Chain	Res	Type	Atoms	Z	Observed(°)	Ideal(°)
2	A	901	ADP	N3-C2-N1	-7.12	122.65	128.86
2	C	901	ADP	N3-C2-N1	-7.05	122.72	128.86

Continued on next page...

Continued from previous page...

Mol	Chain	Res	Type	Atoms	Z	Observed(°)	Ideal(°)
2	F	901	ADP	N3-C2-N1	-6.30	123.37	128.86
2	F	901	ADP	C4-C5-N7	-2.61	106.89	109.41
2	A	901	ADP	C4-C5-N7	-2.54	106.96	109.41
2	C	901	ADP	C4-C5-N7	-2.44	107.05	109.41
2	A	901	ADP	C2-N1-C6	2.05	122.36	118.77
2	F	901	ADP	C4'-O4'-C1'	2.08	111.99	109.77
2	A	901	ADP	C4'-O4'-C1'	2.09	111.99	109.77
2	C	901	ADP	C2-N1-C6	2.09	122.42	118.77
2	C	901	ADP	C4'-O4'-C1'	2.17	112.08	109.77

There are no chirality outliers.

There are no torsion outliers.

There are no ring outliers.

3 monomers are involved in 5 short contacts:

Mol	Chain	Res	Type	Clashes	Symm-Clashes
2	A	901	ADP	1	0
2	C	901	ADP	3	0
2	F	901	ADP	1	0

5.7 Other polymers [i](#)

There are no such residues in this entry.

5.8 Polymer linkage issues [i](#)

There are no chain breaks in this entry.

6 Fit of model and data

6.1 Protein, DNA and RNA chains

In the following table, the column labelled ‘#RSRZ > 2’ contains the number (and percentage) of RSRZ outliers, followed by percent RSRZ outliers for the chain as percentile scores relative to all X-ray entries and entries of similar resolution. The OWAB column contains the minimum, median, 95th percentile and maximum values of the occupancy-weighted average B-factor per residue. The column labelled ‘Q < 0.9’ lists the number of (and percentage) of residues with an average occupancy less than 0.9.

Mol	Chain	Analysed	<RSRZ>	#RSRZ>2	OWAB(Å ²)	Q<0.9
1	A	304/311 (97%)	1.27	55 (18%) 1 2	3, 15, 67, 92	0
1	C	299/311 (96%)	1.25	52 (17%) 2 2	2, 13, 75, 93	0
1	F	299/311 (96%)	1.50	74 (24%) 1 1	2, 13, 75, 92	0
All	All	902/933 (96%)	1.34	181 (20%) 1 2	2, 14, 74, 93	0

All (181) RSRZ outliers are listed below:

Mol	Chain	Res	Type	RSRZ
1	F	723	TRP	15.0
1	C	722	GLY	12.8
1	F	724	PRO	10.5
1	F	801	PRO	8.9
1	C	852	VAL	8.6
1	F	852	VAL	8.4
1	C	639	ALA	8.4
1	F	728	ILE	8.2
1	F	725	TYR	8.0
1	A	723	TRP	7.7
1	C	851	ARG	7.1
1	C	729	ARG	7.1
1	F	729	ARG	7.0
1	F	851	ARG	7.0
1	C	850	ALA	6.6
1	C	728	ILE	6.5
1	C	725	TYR	6.4
1	C	631	HIS	6.4
1	A	725	TYR	6.2
1	A	711	GLY	6.2
1	F	850	ALA	6.1
1	F	786	LEU	6.1
1	A	643	TYR	6.1

Continued on next page...

Continued from previous page...

Mol	Chain	Res	Type	RSRZ
1	F	720	GLN	6.0
1	A	852	VAL	6.0
1	F	719	LEU	5.9
1	F	803	PHE	5.9
1	A	728	ILE	5.8
1	F	802	VAL	5.8
1	A	630	LYS	5.7
1	A	730	ASP	5.7
1	F	726	GLU	5.6
1	A	851	ARG	5.6
1	C	719	LEU	5.5
1	A	719	LEU	5.5
1	C	579	ALA	5.5
1	F	716	LEU	5.3
1	A	717	GLU	5.3
1	C	723	TRP	5.2
1	A	716	LEU	5.2
1	F	733	PHE	5.1
1	C	544	GLY	5.0
1	A	726	GLU	4.9
1	F	713	PRO	4.8
1	C	546	ARG	4.8
1	F	839	VAL	4.8
1	A	718	GLY	4.4
1	F	843	GLY	4.3
1	C	733	PHE	4.3
1	F	730	ASP	4.3
1	A	727	ARG	4.2
1	A	639	ALA	4.2
1	A	631	HIS	4.2
1	A	733	PHE	4.2
1	C	551	ARG	4.2
1	F	714	LEU	4.1
1	F	647	GLU	4.1
1	A	722	GLY	4.0
1	C	727	ARG	4.0
1	C	640	PRO	3.9
1	F	797	ARG	3.9
1	F	759	LYS	3.8
1	C	545	GLU	3.7
1	C	734	LYS	3.7
1	A	802	VAL	3.7

Continued on next page...

Continued from previous page...

Mol	Chain	Res	Type	RSRZ
1	A	801	PRO	3.6
1	C	716	LEU	3.5
1	A	642	GLY	3.5
1	F	711	GLY	3.5
1	C	784	LEU	3.5
1	F	717	GLU	3.5
1	F	845	VAL	3.5
1	C	549	LEU	3.4
1	C	648	GLU	3.4
1	F	568	ARG	3.4
1	F	790	ALA	3.4
1	F	566	ALA	3.3
1	C	839	VAL	3.3
1	C	721	LYS	3.3
1	C	803	PHE	3.3
1	A	732	VAL	3.2
1	F	799	TYR	3.2
1	F	718	GLY	3.2
1	F	794	LEU	3.2
1	A	677	PHE	3.1
1	F	757	LEU	3.1
1	F	734	LYS	3.1
1	A	543	LEU	3.1
1	F	732	VAL	3.0
1	A	734	LYS	3.0
1	C	714	LEU	3.0
1	A	645	GLY	3.0
1	F	747	ARG	3.0
1	F	844	LEU	3.0
1	A	729	ARG	3.0
1	A	721	LYS	3.0
1	C	726	GLU	2.9
1	C	730	ASP	2.9
1	C	543	LEU	2.9
1	F	631	HIS	2.9
1	A	747	ARG	2.9
1	A	573	ALA	2.9
1	A	647	GLU	2.8
1	F	731	GLU	2.8
1	F	621	ARG	2.8
1	F	543	LEU	2.7
1	C	845	VAL	2.7

Continued on next page...

Continued from previous page...

Mol	Chain	Res	Type	RSRZ
1	A	736	LEU	2.7
1	F	712	SER	2.7
1	F	756	PRO	2.6
1	A	762	ILE	2.6
1	C	786	LEU	2.6
1	A	752	VAL	2.6
1	A	845	VAL	2.6
1	F	599	VAL	2.6
1	A	850	ALA	2.6
1	F	592	LEU	2.5
1	F	710	LEU	2.5
1	A	744	PHE	2.5
1	F	838	ASP	2.5
1	A	644	VAL	2.5
1	F	579	ALA	2.5
1	C	834	ARG	2.5
1	C	731	GLU	2.5
1	F	715	ILE	2.5
1	A	682	GLN	2.5
1	A	715	ILE	2.4
1	C	830	LYS	2.4
1	F	812	ILE	2.4
1	C	737	GLN	2.4
1	A	693	HIS	2.4
1	A	799	TYR	2.4
1	A	714	LEU	2.4
1	F	602	THR	2.4
1	A	621	ARG	2.3
1	F	809	ARG	2.3
1	A	803	PHE	2.3
1	F	752	VAL	2.3
1	F	762	ILE	2.3
1	A	646	TYR	2.3
1	C	732	VAL	2.3
1	F	635	ARG	2.3
1	A	839	VAL	2.3
1	A	724	PRO	2.3
1	C	837	VAL	2.2
1	F	758	THR	2.2
1	F	641	PRO	2.2
1	F	727	ARG	2.2
1	C	650	GLY	2.2

Continued on next page...

Continued from previous page...

Mol	Chain	Res	Type	RSRZ
1	F	807	PRO	2.2
1	C	800	ASP	2.2
1	F	795	ALA	2.2
1	A	635	ARG	2.2
1	C	717	GLU	2.1
1	F	681	LEU	2.1
1	F	677	PHE	2.1
1	C	838	ASP	2.1
1	F	678	ASN	2.1
1	A	753	VAL	2.1
1	C	846	PHE	2.1
1	C	637	ILE	2.1
1	F	736	LEU	2.1
1	C	568	ARG	2.1
1	A	649	GLY	2.1
1	C	759	LYS	2.1
1	F	591	PHE	2.1
1	F	772	TYR	2.1
1	F	841	PRO	2.1
1	F	630	LYS	2.1
1	C	799	TYR	2.1
1	F	767	GLU	2.0
1	A	710	LEU	2.0
1	C	681	LEU	2.0
1	F	817	GLU	2.0
1	A	813	GLN	2.0
1	C	801	PRO	2.0
1	F	829	VAL	2.0
1	A	846	PHE	2.0
1	F	789	ALA	2.0
1	C	844	LEU	2.0
1	C	847	ALA	2.0

6.2 Non-standard residues in protein, DNA, RNA chains [i](#)

There are no non-standard protein/DNA/RNA residues in this entry.

6.3 Carbohydrates [i](#)

There are no carbohydrates in this entry.

6.4 Ligands [i](#)

In the following table, the Atoms column lists the number of modelled atoms in the group and the number defined in the chemical component dictionary. LLDF column lists the quality of electron density of the group with respect to its neighbouring residues in protein, DNA or RNA chains. The B-factors column lists the minimum, median, 95th percentile and maximum values of B factors of atoms in the group. The column labelled 'Q< 0.9' lists the number of atoms with occupancy less than 0.9.

Mol	Type	Chain	Res	Atoms	RSCC	RSR	LLDF	B-factors(Å ²)	Q<0.9
2	ADP	C	901	27/27	0.94	0.28	3.15	33,41,58,61	0
2	ADP	A	901	27/27	0.94	0.26	2.28	24,35,54,59	0
2	ADP	F	901	27/27	0.87	0.28	1.46	28,37,54,62	0

6.5 Other polymers [i](#)

There are no such residues in this entry.