



# wwPDB X-ray Structure Validation Summary Report ⓘ

Feb 12, 2017 – 07:23 pm GMT

PDB ID : 4FEJ  
Title : Crystal structure of the A24U mutant xpt-pbuX guanine riboswitch aptamer domain in complex with hypoxanthine  
Authors : Stoddard, C.D.; Trausch, J.J.; Widmann, J.; Marciano, J.; Knight, R.; Batey, R.T.  
Deposited on : 2012-05-30  
Resolution : 1.50 Å(reported)

This is a wwPDB X-ray Structure Validation Summary Report for a publicly released PDB entry.

We welcome your comments at [validation@mail.wwpdb.org](mailto:validation@mail.wwpdb.org)

A user guide is available at

<http://wwpdb.org/validation/2016/XrayValidationReportHelp>

with specific help available everywhere you see the ⓘ symbol.

---

The following versions of software and data (see [references ⓘ](#)) were used in the production of this report:

MolProbity	:	4.02b-467
Mogul	:	1.7.2 (RC1), CSD as538be (2017)
Xtriage (Phenix)	:	1.9-1692
EDS	:	trunk28620
Percentile statistics	:	20161228.v01 (using entries in the PDB archive December 28th 2016)
Refmac	:	5.8.0135
CCP4	:	6.5.0
Ideal geometry (proteins)	:	Engh & Huber (2001)
Ideal geometry (DNA, RNA)	:	Parkinson et al. (1996)
Validation Pipeline (wwPDB-VP)	:	recalc28949

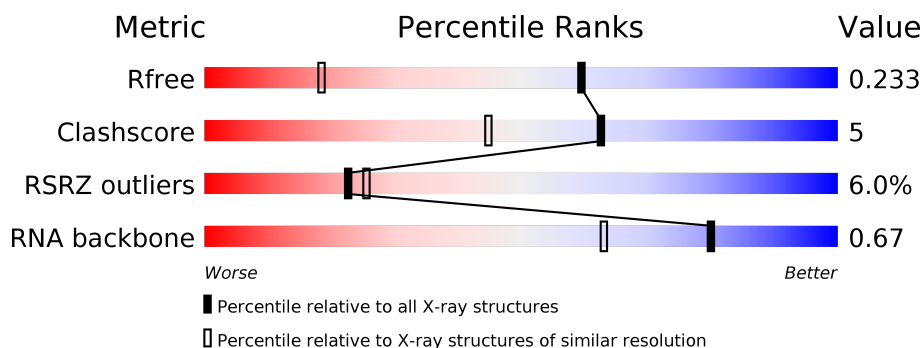
# 1 Overall quality at a glance

The following experimental techniques were used to determine the structure:

*X-RAY DIFFRACTION*

The reported resolution of this entry is 1.50 Å.

Percentile scores (ranging between 0-100) for global validation metrics of the entry are shown in the following graphic. The table shows the number of entries on which the scores are based.



Metric	Whole archive (#Entries)	Similar resolution (#Entries, resolution range(Å))
$R_{free}$	100719	2279 (1.50-1.50)
Clashscore	112137	2503 (1.50-1.50)
RSRZ outliers	101464	2305 (1.50-1.50)
RNA backbone	2435	1043 (2.60-0.62)

The table below summarises the geometric issues observed across the polymeric chains and their fit to the electron density. The red, orange, yellow and green segments on the lower bar indicate the fraction of residues that contain outliers for  $\geq 3$ , 2, 1 and 0 types of geometric quality criteria. A grey segment represents the fraction of residues that are not modelled. The numeric value for each fraction is indicated below the corresponding segment, with a dot representing fractions  $\leq 5\%$ . The upper red bar (where present) indicates the fraction of residues that have poor fit to the electron density. The numeric value is given above the bar.

Mol	Chain	Length	Quality of chain
1	B	67	

The following table lists non-polymeric compounds, carbohydrate monomers and non-standard residues in protein, DNA, RNA chains that are outliers for geometric or electron-density-fit criteria:

Mol	Type	Chain	Res	Chirality	Geometry	Clashes	Electron density
2	HPA	B	101	-	-	-	X
4	NCO	B	104	-	-	-	X
4	NCO	B	105	-	-	-	X

*Continued on next page...*

*Continued from previous page...*

Mol	Type	Chain	Res	Chirality	Geometry	Clashes	Electron density
4	NCO	B	106	-	-	-	X
4	NCO	B	107	-	-	-	X
4	NCO	B	109	-	-	-	X

## 2 Entry composition [i](#)

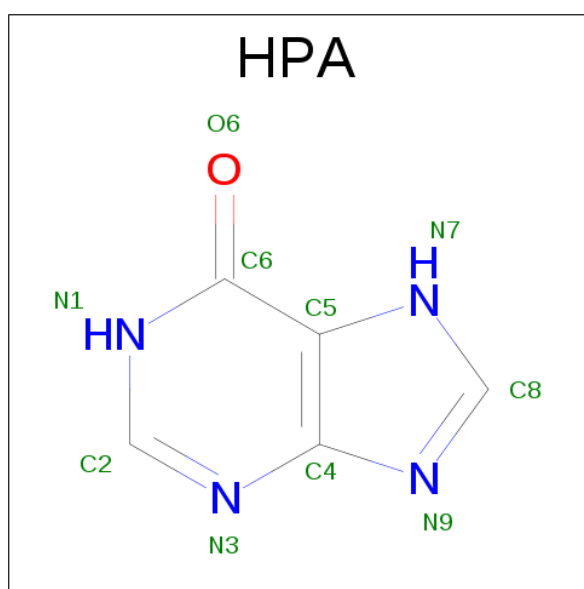
There are 5 unique types of molecules in this entry. The entry contains 2079 atoms, of which 0 are hydrogens and 0 are deuteriums.

In the tables below, the ZeroOcc column contains the number of atoms modelled with zero occupancy, the AltConf column contains the number of residues with at least one atom in alternate conformation and the Trace column contains the number of residues modelled with at most 2 atoms.

- Molecule 1 is a RNA chain called A24U mutant of the *B. subtilis* xpt-pbuX guanine riboswitch aptamer domain.

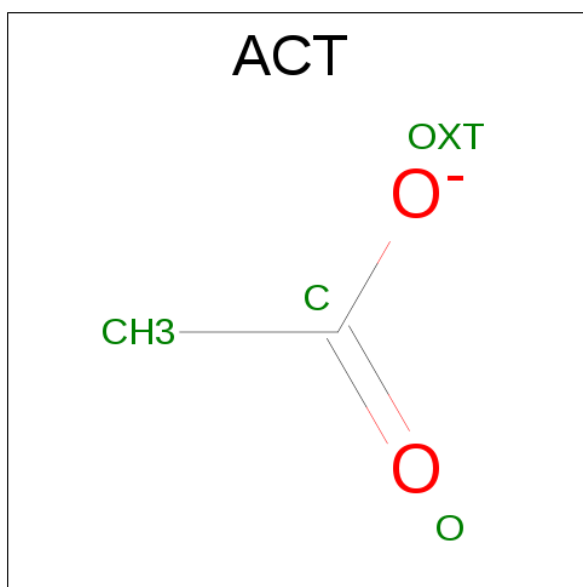
Mol	Chain	Residues	Atoms					ZeroOcc	AltConf	Trace
1	B	67	Total	C	N	O	P	0	0	0
			1420	636	250	468	66			

- Molecule 2 is HYPOXANTHINE (three-letter code: HPA) (formula: C<sub>5</sub>H<sub>4</sub>N<sub>4</sub>O).



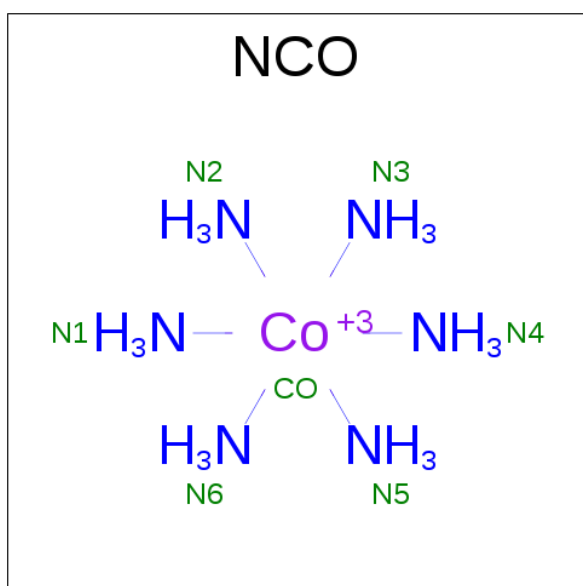
Mol	Chain	Residues	Atoms				ZeroOcc	AltConf
2	B	1	Total	C	N	O	0	0
			10	5	4	1		

- Molecule 3 is ACETATE ION (three-letter code: ACT) (formula: C<sub>2</sub>H<sub>3</sub>O<sub>2</sub>).



Mol	Chain	Residues	Atoms			ZeroOcc	AltConf
3	B	1	Total	C	O	0	0
			4	2	2		
3	B	1	Total	C	O	0	0
			4	2	2		

- Molecule 4 is COBALT HEXAMMINE(III) (three-letter code: NCO) (formula:  $\text{CoH}_{18}\text{N}_6$ ).



Mol	Chain	Residues	Atoms			ZeroOcc	AltConf
4	B	1	Total	Co	N	0	0
			7	1	6		
4	B	1	Total	Co	N	0	0
			7	1	6		

*Continued on next page...*

*Continued from previous page...*

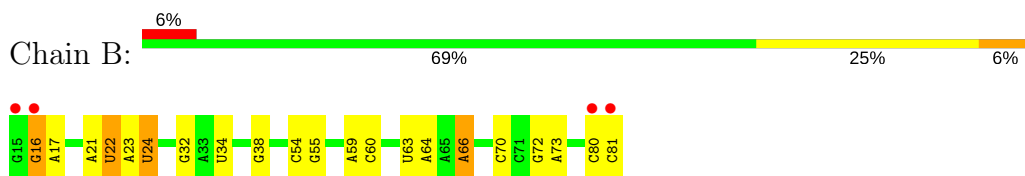
Mol	Chain	Residues	Atoms			ZeroOcc	AltConf
4	B	1	Total	Co	N	0	0
			7	1	6		
4	B	1	Total	Co	N	0	0
			7	1	6		
4	B	1	Total	Co	N	0	0
			7	1	6		
4	B	1	Total	Co	N	0	0
			7	1	6		
4	B	1	Total	Co	N	0	0
			7	1	6		

- Molecule 5 is water.

Mol	Chain	Residues	Atoms		ZeroOcc	AltConf
5	B	592	Total	O	0	0
			592	592		

i

- Molecule 1: A24U mutant of the *B. subtilis* xpt-pbuX guanine riboswitch aptamer domain



## 4 Data and refinement statistics

Property	Value	Source
Space group	C 1 2 1	Depositor
Cell constants a, b, c, $\alpha$ , $\beta$ , $\gamma$	132.69Å 35.23Å 41.90Å 90.00° 90.60° 90.00°	Depositor
Resolution (Å)	20.00 – 1.50 19.91 – 1.50	Depositor EDS
% Data completeness (in resolution range)	(Not available) (20.00-1.50) 98.3 (19.91-1.50)	Depositor EDS
$R_{merge}$	(Not available)	Depositor
$R_{sym}$	(Not available)	Depositor
$\langle I/\sigma(I) \rangle$ <sup>1</sup>	2.59 (at 1.50Å)	Xtriage
Refinement program	CNS	Depositor
R, $R_{free}$	0.185 , 0.230 0.181 , 0.233	Depositor DCC
$R_{free}$ test set	3091 reflections (11.15%)	DCC
Wilson B-factor (Å <sup>2</sup> )	15.0	Xtriage
Anisotropy	0.162	Xtriage
Bulk solvent $k_{sol}$ (e/Å <sup>3</sup> ), $B_{sol}$ (Å <sup>2</sup> )	0.34 , 55.1	EDS
L-test for twinning <sup>2</sup>	$\langle  L  \rangle = 0.50$ , $\langle L^2 \rangle = 0.33$	Xtriage
Estimated twinning fraction	0.015 for -h,-k,l	Xtriage
$F_o, F_c$ correlation	0.97	EDS
Total number of atoms	2079	wwPDB-VP
Average B, all atoms (Å <sup>2</sup> )	27.0	wwPDB-VP

Xtriage's analysis on translational NCS is as follows: *The largest off-origin peak in the Patterson function is 10.69% of the height of the origin peak. No significant pseudotranslation is detected.*

<sup>1</sup>Intensities estimated from amplitudes.

<sup>2</sup>Theoretical values of  $\langle |L| \rangle$ ,  $\langle L^2 \rangle$  for acentric reflections are 0.5, 0.333 respectively for untwinned datasets, and 0.375, 0.2 for perfectly twinned datasets.

## 5 Model quality

### 5.1 Standard geometry

Bond lengths and bond angles in the following residue types are not validated in this section: HPA, ACT, NCO

The Z score for a bond length (or angle) is the number of standard deviations the observed value is removed from the expected value. A bond length (or angle) with  $|Z| > 5$  is considered an outlier worth inspection. RMSZ is the root-mean-square of all Z scores of the bond lengths (or angles).

Mol	Chain	Bond lengths		Bond angles	
		RMSZ	$\# Z  > 5$	RMSZ	$\# Z  > 5$
1	B	0.71	0/1586	0.83	1/2469 (0.0%)

Chiral center outliers are detected by calculating the chiral volume of a chiral center and verifying if the center is modelled as a planar moiety or with the opposite hand. A planarity outlier is detected by checking planarity of atoms in a peptide group, atoms in a mainchain group or atoms of a sidechain that are expected to be planar.

Mol	Chain	#Chirality outliers	#Planarity outliers
1	B	0	8

There are no bond length outliers.

All (1) bond angle outliers are listed below:

Mol	Chain	Res	Type	Atoms	Z	Observed( $^{\circ}$ )	Ideal( $^{\circ}$ )
1	B	32	G	OP2-P-O3'	5.28	116.82	105.20

There are no chirality outliers.

5 of 8 planarity outliers are listed below:

Mol	Chain	Res	Type	Group
1	B	24	U	Sidechain
1	B	34	U	Sidechain
1	B	38	G	Sidechain
1	B	55	G	Sidechain
1	B	59	A	Sidechain

## 5.2 Too-close contacts

In the following table, the Non-H and H(model) columns list the number of non-hydrogen atoms and hydrogen atoms in the chain respectively. The H(added) column lists the number of hydrogen atoms added and optimized by MolProbity. The Clashes column lists the number of clashes within the asymmetric unit, whereas Symm-Clashes lists symmetry related clashes.

Mol	Chain	Non-H	H(model)	H(added)	Clashes	Symm-Clashes
1	B	1420	0	722	11	0
2	B	10	0	4	0	0
3	B	8	0	6	0	0
4	B	49	0	0	0	0
5	B	592	0	0	6	1
All	All	2079	0	732	11	1

The all-atom clashscore is defined as the number of clashes found per 1000 atoms (including hydrogen atoms). The all-atom clashscore for this structure is 5.

The worst 5 of 11 close contacts within the same asymmetric unit are listed below, sorted by their clash magnitude.

Atom-1	Atom-2	Interatomic distance (Å)	Clash overlap (Å)
1:B:60:C:H1'	5:B:573:HOH:O	1.79	0.82
1:B:16:G:O2'	1:B:17:A:H5'	1.96	0.66
1:B:66:A:H4'	5:B:744:HOH:O	2.01	0.60
1:B:21:A:H1'	5:B:682:HOH:O	2.00	0.60
1:B:70:C:H3'	5:B:418:HOH:O	2.08	0.53

All (1) symmetry-related close contacts are listed below. The label for Atom-2 includes the symmetry operator and encoded unit-cell translations to be applied.

Atom-1	Atom-2	Interatomic distance (Å)	Clash overlap (Å)
5:B:615:HOH:O	5:B:615:HOH:O[2_555]	2.01	0.19

## 5.3 Torsion angles

### 5.3.1 Protein backbone

There are no protein molecules in this entry.

### 5.3.2 Protein sidechains [i](#)

There are no protein molecules in this entry.

### 5.3.3 RNA [i](#)

Mol	Chain	Analysed	Backbone Outliers	Pucker Outliers
1	B	66/67 (98%)	3 (4%)	0

All (3) RNA backbone outliers are listed below:

Mol	Chain	Res	Type
1	B	16	G
1	B	22	U
1	B	73	A

There are no RNA pucker outliers to report.

## 5.4 Non-standard residues in protein, DNA, RNA chains [i](#)

There are no non-standard protein/DNA/RNA residues in this entry.

## 5.5 Carbohydrates [i](#)

There are no carbohydrates in this entry.

## 5.6 Ligand geometry [i](#)

10 ligands are modelled in this entry.

In the following table, the Counts columns list the number of bonds (or angles) for which Mogul statistics could be retrieved, the number of bonds (or angles) that are observed in the model and the number of bonds (or angles) that are defined in the chemical component dictionary. The Link column lists molecule types, if any, to which the group is linked. The Z score for a bond length (or angle) is the number of standard deviations the observed value is removed from the expected value. A bond length (or angle) with  $|Z| > 2$  is considered an outlier worth inspection. RMSZ is the root-mean-square of all Z scores of the bond lengths (or angles).

Mol	Type	Chain	Res	Link	Bond lengths			Bond angles		
					Counts	RMSZ	$\# Z  > 2$	Counts	RMSZ	$\# Z  > 2$
2	HPA	B	101	-	8,11,11	1.84	1 (12%)	5,15,15	4.73	2 (40%)

Mol	Type	Chain	Res	Link	Bond lengths			Bond angles		
					Counts	RMSZ	# Z  > 2	Counts	RMSZ	# Z  > 2
3	ACT	B	102	-	1,3,3	3.14	1 (100%)	0,3,3	0.00	-
3	ACT	B	103	-	1,3,3	3.28	1 (100%)	0,3,3	0.00	-
4	NCO	B	104	-	6,6,6	0.30	0	0,15,15	0.00	-
4	NCO	B	105	-	6,6,6	0.50	0	0,15,15	0.00	-
4	NCO	B	106	-	6,6,6	0.25	0	0,15,15	0.00	-
4	NCO	B	107	-	6,6,6	0.15	0	0,15,15	0.00	-
4	NCO	B	108	-	6,6,6	0.31	0	0,15,15	0.00	-
4	NCO	B	109	-	6,6,6	0.07	0	0,15,15	0.00	-
4	NCO	B	110	-	6,6,6	0.08	0	0,15,15	0.00	-

In the following table, the Chirals column lists the number of chiral outliers, the number of chiral centers analysed, the number of these observed in the model and the number defined in the chemical component dictionary. Similar counts are reported in the Torsion and Rings columns. '-' means no outliers of that kind were identified.

Mol	Type	Chain	Res	Link	Chirals	Torsions	Rings
2	HPA	B	101	-	-	0/0/0/0	0/2/2/2
3	ACT	B	102	-	-	0/0/0/0	0/0/0/0
3	ACT	B	103	-	-	0/0/0/0	0/0/0/0
4	NCO	B	104	-	-	0/0/0/0	0/0/0/0
4	NCO	B	105	-	-	0/0/0/0	0/0/0/0
4	NCO	B	106	-	-	0/0/0/0	0/0/0/0
4	NCO	B	107	-	-	0/0/0/0	0/0/0/0
4	NCO	B	108	-	-	0/0/0/0	0/0/0/0
4	NCO	B	109	-	-	0/0/0/0	0/0/0/0
4	NCO	B	110	-	-	0/0/0/0	0/0/0/0

All (3) bond length outliers are listed below:

Mol	Chain	Res	Type	Atoms	Z	Observed(Å)	Ideal(Å)
3	B	102	ACT	CH3-C	3.14	1.52	1.48
3	B	103	ACT	CH3-C	3.28	1.53	1.48
2	B	101	HPA	C6-N1	4.00	1.40	1.33

All (2) bond angle outliers are listed below:

Mol	Chain	Res	Type	Atoms	Z	Observed(°)	Ideal(°)
2	B	101	HPA	N3-C2-N1	-8.45	121.50	128.86
2	B	101	HPA	C2-N1-C6	6.21	126.29	115.91

There are no chirality outliers.

There are no torsion outliers.

There are no ring outliers.

No monomer is involved in short contacts.

## 5.7 Other polymers

There are no such residues in this entry.

## 5.8 Polymer linkage issues

There are no chain breaks in this entry.

## 6 Fit of model and data [i](#)

### 6.1 Protein, DNA and RNA chains [i](#)

In the following table, the column labelled '#RSRZ > 2' contains the number (and percentage) of RSRZ outliers, followed by percent RSRZ outliers for the chain as percentile scores relative to all X-ray entries and entries of similar resolution. The OWAB column contains the minimum, median, 95<sup>th</sup> percentile and maximum values of the occupancy-weighted average B-factor per residue. The column labelled 'Q < 0.9' lists the number of (and percentage) of residues with an average occupancy less than 0.9.

Mol	Chain	Analysed	<RSRZ>	#RSRZ>2	OWAB(Å <sup>2</sup> )	Q<0.9
1	B	67/67 (100%)	0.23	4 (5%) 23 25	11, 19, 48, 68	0

All (4) RSRZ outliers are listed below:

Mol	Chain	Res	Type	RSRZ
1	B	81	C	7.3
1	B	15	G	6.5
1	B	80	C	3.8
1	B	16	G	2.9

### 6.2 Non-standard residues in protein, DNA, RNA chains [i](#)

There are no non-standard protein/DNA/RNA residues in this entry.

### 6.3 Carbohydrates [i](#)

There are no carbohydrates in this entry.

### 6.4 Ligands [i](#)

In the following table, the Atoms column lists the number of modelled atoms in the group and the number defined in the chemical component dictionary. LLDF column lists the quality of electron density of the group with respect to its neighbouring residues in protein, DNA or RNA chains. The B-factors column lists the minimum, median, 95<sup>th</sup> percentile and maximum values of B factors of atoms in the group. The column labelled 'Q < 0.9' lists the number of atoms with occupancy less than 0.9.

Mol	Type	Chain	Res	Atoms	RSCC	RSR	LLDF	B-factors(Å <sup>2</sup> )	Q<0.9
2	HPA	B	101	10/10	0.97	0.19	9.53	17,18,18,19	0

*Continued on next page...*

*Continued from previous page...*

Mol	Type	Chain	Res	Atoms	RSCC	RSR	LLDF	B-factors( $\text{\AA}^2$ )	Q<0.9
4	NCO	B	109	7/7	0.89	0.19	9.06	40,41,41,41	0
4	NCO	B	107	7/7	0.94	0.18	6.74	36,36,37,37	0
4	NCO	B	106	7/7	0.96	0.16	5.85	22,23,24,24	0
4	NCO	B	105	7/7	0.99	0.09	2.43	13,15,15,16	0
4	NCO	B	104	7/7	0.99	0.09	2.10	16,16,19,20	0
4	NCO	B	108	7/7	0.99	0.09	1.27	16,19,20,22	0
3	ACT	B	102	4/4	0.98	0.08	0.76	10,10,11,12	0
4	NCO	B	110	7/7	0.98	0.11	0.66	16,17,19,19	7
3	ACT	B	103	4/4	0.73	0.29	-	39,40,40,40	0

## 6.5 Other polymers [i](#)

There are no such residues in this entry.