



Full wwPDB X-ray Structure Validation Report ⓘ

Nov 5, 2017 – 10:46 PM EST

PDB ID : 4FES
Title : Structure of OSH4 in complex with cholesterol analogs
Authors : Koag, M.C.; Monzingo, A.F.; Cheun, Y.; Lee, S.
Deposited on : unknown
Resolution : 2.00 Å(reported)

This is a Full wwPDB X-ray Structure Validation Report for a publicly released PDB entry.

We welcome your comments at validation@mail.wwpdb.org

A user guide is available at

<http://wwpdb.org/validation/2016/XrayValidationReportHelp>

with specific help available everywhere you see the ⓘ symbol.

The following versions of software and data (see [references ⓘ](#)) were used in the production of this report:

MolProbity : 4.02b-467
Mogul : 1.7.2 (RC1), CSD as538be (2017)
Xtriage (Phenix) : 1.9-1692
EDS : rb-20030345
Percentile statistics : 20161228.v01 (using entries in the PDB archive December 28th 2016)
Refmac : 5.8.0135
CCP4 : 6.5.0
Ideal geometry (proteins) : Engh & Huber (2001)
Ideal geometry (DNA, RNA) : Parkinson et al. (1996)
Validation Pipeline (wwPDB-VP) : rb-20030345

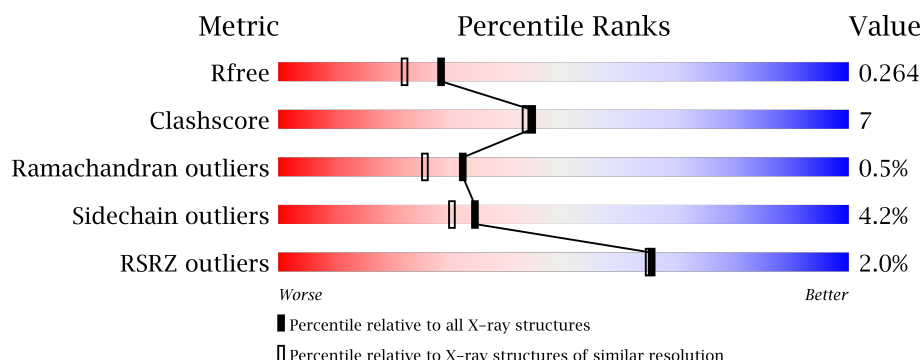
1 Overall quality at a glance

The following experimental techniques were used to determine the structure:

X-RAY DIFFRACTION

The reported resolution of this entry is 2.00 Å.

Percentile scores (ranging between 0-100) for global validation metrics of the entry are shown in the following graphic. The table shows the number of entries on which the scores are based.



Metric	Whole archive (#Entries)	Similar resolution (#Entries, resolution range(Å))
R_{free}	100719	6609 (2.00-2.00)
Clashscore	112137	7775 (2.00-2.00)
Ramachandran outliers	110173	7679 (2.00-2.00)
Sidechain outliers	110143	7678 (2.00-2.00)
RSRZ outliers	101464	6696 (2.00-2.00)

The table below summarises the geometric issues observed across the polymeric chains and their fit to the electron density. The red, orange, yellow and green segments on the lower bar indicate the fraction of residues that contain outliers for ≥ 3 , 2, 1 and 0 types of geometric quality criteria. A grey segment represents the fraction of residues that are not modelled. The numeric value for each fraction is indicated below the corresponding segment, with a dot representing fractions $\leq 5\%$. The upper red bar (where present) indicates the fraction of residues that have poor fit to the electron density. The numeric value is given above the bar.

Mol	Chain	Length	Quality of chain
1	A	436	<div> <div style="width: 100%; height: 10px; background-color: red; position: relative;"> % </div> <div style="width: 100%; height: 10px; background-color: green; position: relative;"> 83% 14% .. </div> </div>
1	B	436	<div> <div style="width: 100%; height: 10px; background-color: red; position: relative;"> 3% </div> <div style="width: 100%; height: 10px; background-color: green; position: relative;"> 76% 19% .. </div> </div>

The following table lists non-polymeric compounds, carbohydrate monomers and non-standard residues in protein, DNA, RNA chains that are outliers for geometric or electron-density-fit criteria:

Mol	Type	Chain	Res	Chirality	Geometry	Clashes	Electron density
2	0T9	A	501	-	-	-	X

2 Entry composition

There are 3 unique types of molecules in this entry. The entry contains 7159 atoms, of which 0 are hydrogens and 0 are deuteriums.

In the tables below, the ZeroOcc column contains the number of atoms modelled with zero occupancy, the AltConf column contains the number of residues with at least one atom in alternate conformation and the Trace column contains the number of residues modelled with at most 2 atoms.

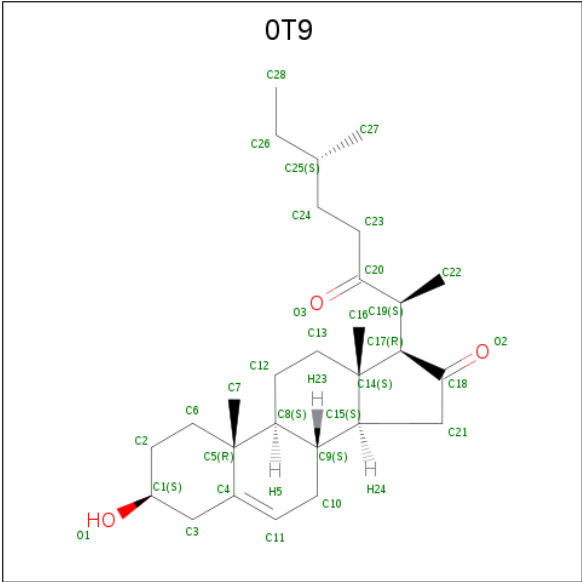
- Molecule 1 is a protein called Protein KES1.

Mol	Chain	Residues	Atoms					ZeroOcc	AltConf	Trace
1	A	431	Total	C	N	O	S	0	0	0
			3434	2201	564	662	7			
1	B	425	Total	C	N	O	S	0	0	0
			3364	2159	554	644	7			

There are 6 discrepancies between the modelled and reference sequences:

Chain	Residue	Modelled	Actual	Comment	Reference
A	-1	MET	-	EXPRESSION TAG	UNP P35844
A	0	ASP	-	EXPRESSION TAG	UNP P35844
A	1	PRO	-	EXPRESSION TAG	UNP P35844
B	-1	MET	-	EXPRESSION TAG	UNP P35844
B	0	ASP	-	EXPRESSION TAG	UNP P35844
B	1	PRO	-	EXPRESSION TAG	UNP P35844

- Molecule 2 is (3S,8S,9S,10R,13S,14S,17R)-3-hydroxy-10,13-dimethyl-17-[(2S,6S)-6-methyl-3-oxooctan-2-yl]-1,2,3,4,7,8,9,10,11,12,13,14,15,17-tetradecahydro-16H-cyclopenta[a]phenanthren-16-one (three-letter code: 0T9) (formula: C₂₈H₄₄O₃).



Mol	Chain	Residues	Atoms			ZeroOcc	AltConf
2	A	1	Total	C	O	0	0
			31	28	3		
2	B	1	Total	C	O	0	0
			31	28	3		

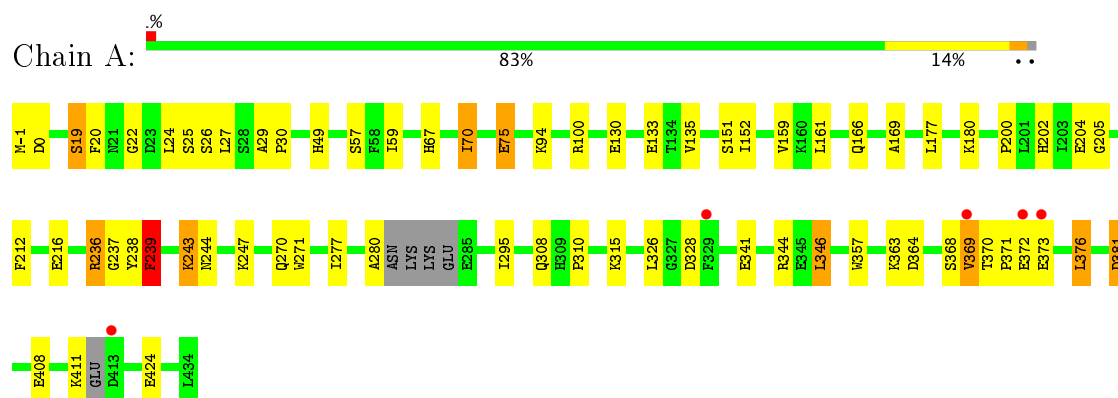
- Molecule 3 is water.

Mol	Chain	Residues	Atoms		ZeroOcc	AltConf
3	A	157	Total	O	0	0
			157	157		
3	B	142	Total	O	0	0
			142	142		

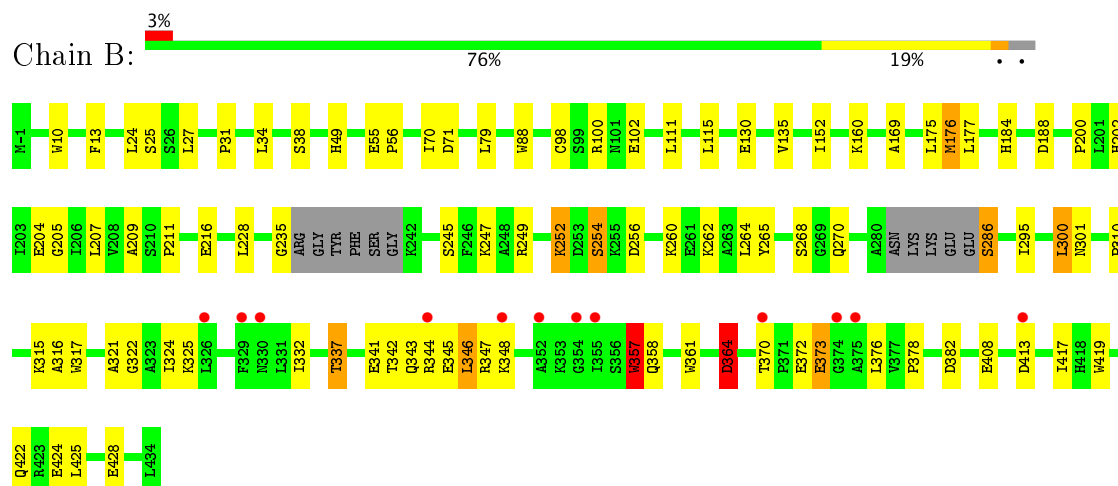
3 Residue-property plots [i](#)

These plots are drawn for all protein, RNA and DNA chains in the entry. The first graphic for a chain summarises the proportions of the various outlier classes displayed in the second graphic. The second graphic shows the sequence view annotated by issues in geometry and electron density. Residues are color-coded according to the number of geometric quality criteria for which they contain at least one outlier: green = 0, yellow = 1, orange = 2 and red = 3 or more. A red dot above a residue indicates a poor fit to the electron density ($RSRZ > 2$). Stretches of 2 or more consecutive residues without any outlier are shown as a green connector. Residues present in the sample, but not in the model, are shown in grey.

• Molecule 1: Protein KES1



• Molecule 1: Protein KES1



4 Data and refinement statistics

Property	Value	Source
Space group	P 1	Depositor
Cell constants a, b, c, α , β , γ	51.66Å 65.77Å 83.03Å 96.73° 99.62° 96.40°	Depositor
Resolution (Å)	20.00 – 2.00 18.57 – 2.00	Depositor EDS
% Data completeness (in resolution range)	90.4 (20.00-2.00) 86.9 (18.57-2.00)	Depositor EDS
R_{merge}	0.07	Depositor
R_{sym}	(Not available)	Depositor
$\langle I/\sigma(I) \rangle$ ¹	2.38 (at 2.00Å)	Xtriage
Refinement program	REFMAC 5.6.0117	Depositor
R, R_{free}	0.205 , 0.266 0.204 , 0.264	Depositor DCC
R_{free} test set	3288 reflections (5.37%)	DCC
Wilson B-factor (Å ²)	19.8	Xtriage
Anisotropy	0.634	Xtriage
Bulk solvent k_{sol} (e/Å ³), B_{sol} (Å ²)	0.39 , 45.2	EDS
L-test for twinning ²	$\langle L \rangle = 0.49$, $\langle L^2 \rangle = 0.32$	Xtriage
Estimated twinning fraction	No twinning to report.	Xtriage
F_o, F_c correlation	0.94	EDS
Total number of atoms	7159	wwPDB-VP
Average B, all atoms (Å ²)	26.0	wwPDB-VP

Xtriage's analysis on translational NCS is as follows: *The largest off-origin peak in the Patterson function is 5.15% of the height of the origin peak. No significant pseudotranslation is detected.*

¹Intensities estimated from amplitudes.

²Theoretical values of $\langle |L| \rangle$, $\langle L^2 \rangle$ for acentric reflections are 0.5, 0.333 respectively for untwinned datasets, and 0.375, 0.2 for perfectly twinned datasets.

5 Model quality [i](#)

5.1 Standard geometry [i](#)

Bond lengths and bond angles in the following residue types are not validated in this section: 0T9

The Z score for a bond length (or angle) is the number of standard deviations the observed value is removed from the expected value. A bond length (or angle) with $|Z| > 5$ is considered an outlier worth inspection. RMSZ is the root-mean-square of all Z scores of the bond lengths (or angles).

Mol	Chain	Bond lengths		Bond angles	
		RMSZ	$\# Z > 5$	RMSZ	$\# Z > 5$
1	A	0.99	2/3521 (0.1%)	1.00	7/4765 (0.1%)
1	B	0.97	5/3449 (0.1%)	0.95	7/4672 (0.1%)
All	All	0.98	7/6970 (0.1%)	0.97	14/9437 (0.1%)

All (7) bond length outliers are listed below:

Mol	Chain	Res	Type	Atoms	Z	Observed(Å)	Ideal(Å)
1	A	357	TRP	CD2-CE2	6.33	1.49	1.41
1	B	419	TRP	CD2-CE2	6.03	1.48	1.41
1	A	133	GLU	CD-OE2	5.68	1.31	1.25
1	B	361	TRP	CD2-CE2	5.56	1.48	1.41
1	B	357	TRP	CD2-CE2	5.29	1.47	1.41
1	B	88	TRP	CD2-CE2	5.26	1.47	1.41
1	B	317	TRP	CD2-CE2	5.21	1.47	1.41

All (14) bond angle outliers are listed below:

Mol	Chain	Res	Type	Atoms	Z	Observed(°)	Ideal(°)
1	A	236	ARG	NE-CZ-NH1	8.37	124.48	120.30
1	A	236	ARG	NE-CZ-NH2	-7.79	116.40	120.30
1	B	260	LYS	CD-CE-NZ	-6.48	96.80	111.70
1	A	94	LYS	CD-CE-NZ	-6.20	97.45	111.70
1	A	364	ASP	CB-CG-OD2	5.82	123.54	118.30
1	B	249	ARG	NE-CZ-NH2	-5.43	117.58	120.30
1	A	0	ASP	CB-CG-OD2	5.33	123.10	118.30
1	B	364	ASP	CB-CG-OD2	5.28	123.05	118.30
1	B	249	ARG	NE-CZ-NH1	5.22	122.91	120.30
1	B	300	LEU	CB-CG-CD1	-5.15	102.25	111.00
1	A	328	ASP	CB-CG-OD1	5.12	122.91	118.30
1	B	176	MET	CG-SD-CE	5.10	108.36	100.20

Continued on next page...

Continued from previous page...

Mol	Chain	Res	Type	Atoms	Z	Observed(°)	Ideal(°)
1	B	346	LEU	CA-CB-CG	5.10	127.02	115.30
1	A	239	PHE	N-CA-CB	5.03	119.66	110.60

There are no chirality outliers.

There are no planarity outliers.

5.2 Too-close contacts ⓘ

In the following table, the Non-H and H(model) columns list the number of non-hydrogen atoms and hydrogen atoms in the chain respectively. The H(added) column lists the number of hydrogen atoms added and optimized by MolProbity. The Clashes column lists the number of clashes within the asymmetric unit, whereas Symm-Clashes lists symmetry related clashes.

Mol	Chain	Non-H	H(model)	H(added)	Clashes	Symm-Clashes
1	A	3434	0	3338	39	0
1	B	3364	0	3269	60	0
2	A	31	0	44	1	0
2	B	31	0	44	1	0
3	A	157	0	0	8	0
3	B	142	0	0	17	0
All	All	7159	0	6695	101	0

The all-atom clashscore is defined as the number of clashes found per 1000 atoms (including hydrogen atoms). The all-atom clashscore for this structure is 7.

All (101) close contacts within the same asymmetric unit are listed below, sorted by their clash magnitude.

Atom-1	Atom-2	Interatomic distance (Å)	Clash overlap (Å)
1:B:254:SER:HB3	3:B:660:HOH:O	1.33	1.25
1:B:175:LEU:HD12	1:B:207:LEU:HD21	1.21	1.11
1:B:378:PRO:HB2	3:B:712:HOH:O	1.45	1.11
1:B:321:ALA:O	1:B:325:LYS:HG3	1.54	1.06
1:B:270:GLN:HG3	3:B:617:HOH:O	1.56	1.06
1:B:428:GLU:HG3	3:B:676:HOH:O	1.66	0.95
1:B:175:LEU:CD1	1:B:207:LEU:HD21	2.03	0.88
1:B:175:LEU:HD12	1:B:207:LEU:CD2	2.04	0.86
1:B:343:GLN:HB3	1:B:347:ARG:HH12	1.41	0.85
1:A:75:GLU:HB2	3:A:712:HOH:O	1.76	0.85
1:A:130:GLU:N	1:A:130:GLU:OE1	2.09	0.84
1:B:262:LYS:HE3	3:B:653:HOH:O	1.81	0.78

Continued on next page...

Continued from previous page...

Atom-1	Atom-2	Interatomic distance (Å)	Clash overlap (Å)
1:B:370:THR:HG22	1:B:370:THR:O	1.85	0.77
1:A:408:GLU:OE1	1:A:411:LYS:HD2	1.84	0.77
1:B:343:GLN:HB3	1:B:347:ARG:NH1	2.00	0.76
1:A:49:HIS:HE1	3:A:692:HOH:O	1.72	0.70
1:B:169:ALA:HB1	1:B:177:LEU:HD11	1.73	0.70
1:A:368:SER:O	1:A:371:PRO:HD3	1.93	0.68
1:B:382:ASP:CB	3:B:712:HOH:O	2.42	0.67
1:B:235:GLY:C	3:B:637:HOH:O	2.34	0.67
1:B:49:HIS:HE1	3:B:700:HOH:O	1.79	0.66
1:B:382:ASP:HB2	3:B:712:HOH:O	1.97	0.63
1:B:175:LEU:CD1	1:B:207:LEU:CD2	2.72	0.62
1:B:252:LYS:HG3	3:B:612:HOH:O	2.00	0.61
1:B:13:PHE:CE1	1:B:27:LEU:HD22	2.37	0.59
1:A:-1:MET:HA	3:A:742:HOH:O	2.02	0.59
1:B:252:LYS:HG2	1:B:264:LEU:HD21	1.86	0.57
1:A:238:TYR:O	1:A:239:PHE:HB2	2.05	0.57
1:B:135:VAL:O	1:B:152:ILE:HA	2.06	0.56
1:B:200:PRO:HD2	1:B:216:GLU:O	2.05	0.56
1:B:31:PRO:HD2	3:B:708:HOH:O	2.06	0.55
1:A:370:THR:N	1:A:371:PRO:CD	2.70	0.55
1:B:205:GLY:HA2	3:B:640:HOH:O	2.07	0.54
1:B:49:HIS:CD2	1:B:295:ILE:HG22	2.42	0.54
1:B:202:HIS:ND1	1:B:216:GLU:OE1	2.38	0.53
1:A:-1:MET:CA	3:A:742:HOH:O	2.55	0.53
1:B:70:ILE:HD12	1:B:71:ASP:N	2.23	0.53
1:B:413:ASP:CB	3:B:735:HOH:O	2.55	0.53
1:B:337:THR:O	1:B:341:GLU:HG3	2.08	0.53
1:B:342:THR:O	1:B:345:GLU:HB3	2.08	0.53
1:B:79:LEU:HD21	1:B:265:TYR:HE1	1.74	0.53
1:B:13:PHE:HE1	1:B:27:LEU:HD22	1.73	0.52
1:A:180:LYS:HE3	3:A:702:HOH:O	2.10	0.52
1:B:370:THR:O	1:B:370:THR:CG2	2.56	0.52
1:B:70:ILE:HD12	1:B:70:ILE:C	2.31	0.51
1:A:280:ALA:HB3	3:A:736:HOH:O	2.10	0.51
1:A:363:LYS:HB3	1:A:376:LEU:HD23	1.92	0.51
1:A:381:ASP:N	1:A:381:ASP:OD2	2.25	0.50
1:B:252:LYS:HE2	1:B:256:ASP:OD2	2.12	0.50
1:A:19:SER:OG	1:A:19:SER:O	2.29	0.49
1:A:372:GLU:HG3	1:A:373:GLU:N	2.28	0.49
1:B:322:GLY:O	1:B:325:LYS:HB2	2.13	0.48
1:B:247:LYS:HG2	1:B:268:SER:HB3	1.96	0.47

Continued on next page...

Continued from previous page...

Atom-1	Atom-2	Interatomic distance (Å)	Clash overlap (Å)
2:B:501:OT9:H34	2:B:501:OT9:H44	1.61	0.46
1:A:59:ILE:HG12	1:A:67:HIS:CB	2.45	0.46
1:B:38:SER:HA	1:B:111:LEU:HB2	1.96	0.46
1:A:200:PRO:HG2	1:A:216:GLU:HG3	1.96	0.45
1:A:-1:MET:N	3:A:742:HOH:O	2.49	0.45
1:A:424:GLU:H	1:A:424:GLU:CD	2.20	0.45
1:B:55:GLU:N	1:B:56:PRO:CD	2.79	0.45
1:B:130:GLU:OE1	1:B:130:GLU:N	2.40	0.45
1:A:243:LYS:O	1:A:270:GLN:HG3	2.17	0.45
1:B:408:GLU:HB3	3:B:677:HOH:O	2.16	0.44
1:A:205:GLY:HA2	3:A:688:HOH:O	2.17	0.44
1:B:372:GLU:O	1:B:373:GLU:C	2.56	0.44
1:A:169:ALA:HB1	1:A:177:LEU:HD11	2.00	0.44
2:A:501:OT9:H33	2:A:501:OT9:H40	1.31	0.43
1:A:57:SER:HB3	1:A:159:VAL:CG2	2.48	0.43
1:B:160:LYS:HG3	1:B:188:ASP:HB2	1.99	0.43
1:A:202:HIS:CD2	1:A:204:GLU:OE2	2.72	0.43
1:A:151:SER:HA	1:A:161:LEU:O	2.19	0.43
1:A:247:LYS:HB2	1:A:247:LYS:HE3	1.62	0.43
1:B:364:ASP:HB2	1:B:417:ILE:HG23	2.01	0.43
1:A:26:SER:O	1:A:27:LEU:C	2.57	0.42
1:B:228:LEU:HD22	1:B:254:SER:HB2	2.01	0.42
1:A:244:ASN:HB3	1:A:271:TRP:CE2	2.54	0.42
1:A:70:ILE:HG13	1:A:277:ILE:HG21	2.00	0.42
1:A:310:PRO:HG2	1:A:346:LEU:HD11	2.00	0.42
1:B:422:GLN:HB2	1:B:425:LEU:HD12	2.01	0.42
1:A:202:HIS:HD2	1:A:204:GLU:OE2	2.02	0.42
1:A:341:GLU:HA	1:A:344:ARG:NH1	2.35	0.41
1:B:347:ARG:HG2	1:B:357:TRP:CZ2	2.55	0.41
1:B:204:GLU:O	1:B:211:PRO:HA	2.20	0.41
1:B:31:PRO:HA	1:B:34:LEU:HD12	2.01	0.41
1:B:310:PRO:O	1:B:316:ALA:HB2	2.20	0.41
1:B:345:GLU:O	1:B:348:LYS:HB2	2.20	0.41
1:A:135:VAL:O	1:A:152:ILE:HA	2.20	0.41
1:B:324:ILE:HA	1:B:332:ILE:HD11	2.02	0.41
1:A:204:GLU:HB3	1:A:212:PHE:CE2	2.55	0.41
1:A:20:PHE:CE2	1:A:22:GLY:HA2	2.56	0.41
1:A:24:LEU:HD23	1:A:27:LEU:HD11	2.02	0.41
1:A:308:GLN:O	1:A:315:LYS:HD2	2.20	0.41
1:A:237:GLY:C	1:A:238:TYR:O	2.57	0.40
1:B:98:CYS:O	1:B:102:GLU:HG3	2.20	0.40

Continued on next page...

Continued from previous page...

Atom-1	Atom-2	Interatomic distance (Å)	Clash overlap (Å)
1:B:115:LEU:HD21	1:B:358:GLN:HG2	2.02	0.40
1:B:49:HIS:HD2	3:B:608:HOH:O	2.03	0.40
1:A:29:ALA:HA	1:A:30:PRO:HD3	1.95	0.40
1:B:10:TRP:CE2	1:B:209:ALA:HB2	2.56	0.40
1:B:184:HIS:CD2	3:B:654:HOH:O	2.75	0.40
1:B:286:SER:N	3:B:611:HOH:O	2.53	0.40
1:B:347:ARG:NE	1:B:357:TRP:CH2	2.89	0.40

There are no symmetry-related clashes.

5.3 Torsion angles [i](#)

5.3.1 Protein backbone [i](#)

In the following table, the Percentiles column shows the percent Ramachandran outliers of the chain as a percentile score with respect to all X-ray entries followed by that with respect to entries of similar resolution.

The Analysed column shows the number of residues for which the backbone conformation was analysed, and the total number of residues.

Mol	Chain	Analysed	Favoured	Allowed	Outliers	Percentiles	
1	A	425/436 (98%)	403 (95%)	20 (5%)	2 (0%)	32	26
1	B	419/436 (96%)	396 (94%)	21 (5%)	2 (0%)	32	26
All	All	844/872 (97%)	799 (95%)	41 (5%)	4 (0%)	32	26

All (4) Ramachandran outliers are listed below:

Mol	Chain	Res	Type
1	A	369	VAL
1	A	239	PHE
1	B	357	TRP
1	B	373	GLU

5.3.2 Protein sidechains [i](#)

In the following table, the Percentiles column shows the percent sidechain outliers of the chain as a percentile score with respect to all X-ray entries followed by that with respect to entries of similar resolution.

The Analysed column shows the number of residues for which the sidechain conformation was analysed, and the total number of residues.

Mol	Chain	Analysed	Rotameric	Outliers	Percentiles	
1	A	377/391 (96%)	363 (96%)	14 (4%)	39	36
1	B	367/391 (94%)	350 (95%)	17 (5%)	31	27
All	All	744/782 (95%)	713 (96%)	31 (4%)	34	30

All (31) residues with a non-rotameric sidechain are listed below:

Mol	Chain	Res	Type
1	A	19	SER
1	A	25	SER
1	A	70	ILE
1	A	75	GLU
1	A	100	ARG
1	A	166	GLN
1	A	236	ARG
1	A	243	LYS
1	A	295	ILE
1	A	326	LEU
1	A	346	LEU
1	A	369	VAL
1	A	376	LEU
1	A	381	ASP
1	B	24	LEU
1	B	25	SER
1	B	100	ARG
1	B	176	MET
1	B	245	SER
1	B	252	LYS
1	B	254	SER
1	B	286	SER
1	B	300	LEU
1	B	301	ASN
1	B	315	LYS
1	B	337	THR
1	B	344	ARG
1	B	346	LEU
1	B	364	ASP
1	B	376	LEU
1	B	424	GLU

Some sidechains can be flipped to improve hydrogen bonding and reduce clashes. All (4) such

sidechains are listed below:

Mol	Chain	Res	Type
1	A	49	HIS
1	A	101	ASN
1	B	49	HIS
1	B	358	GLN

5.3.3 RNA [i](#)

There are no RNA molecules in this entry.

5.4 Non-standard residues in protein, DNA, RNA chains [i](#)

There are no non-standard protein/DNA/RNA residues in this entry.

5.5 Carbohydrates [i](#)

There are no carbohydrates in this entry.

5.6 Ligand geometry [i](#)

2 ligands are modelled in this entry.

In the following table, the Counts columns list the number of bonds (or angles) for which Mogul statistics could be retrieved, the number of bonds (or angles) that are observed in the model and the number of bonds (or angles) that are defined in the Chemical Component Dictionary. The Link column lists molecule types, if any, to which the group is linked. The Z score for a bond length (or angle) is the number of standard deviations the observed value is removed from the expected value. A bond length (or angle) with $|Z| > 2$ is considered an outlier worth inspection. RMSZ is the root-mean-square of all Z scores of the bond lengths (or angles).

Mol	Type	Chain	Res	Link	Bond lengths			Bond angles		
					Counts	RMSZ	$\# Z > 2$	Counts	RMSZ	$\# Z > 2$
2	OT9	A	501	-	34,34,34	2.66	11 (32%)	50,53,53	2.36	12 (24%)
2	OT9	B	501	-	34,34,34	2.44	15 (44%)	50,53,53	2.22	15 (30%)

In the following table, the Chirals column lists the number of chiral outliers, the number of chiral centers analysed, the number of these observed in the model and the number defined in the Chemical Component Dictionary. Similar counts are reported in the Torsion and Rings columns. '-' means no outliers of that kind were identified.

Mol	Type	Chain	Res	Link	Chirals	Torsions	Rings
2	0T9	A	501	-	-	0/15/76/76	0/4/4/4
2	0T9	B	501	-	-	0/15/76/76	0/4/4/4

All (26) bond length outliers are listed below:

Mol	Chain	Res	Type	Atoms	Z	Observed(Å)	Ideal(Å)
2	B	501	0T9	C5-C4	-4.49	1.43	1.52
2	B	501	0T9	C10-C11	-4.43	1.41	1.50
2	A	501	0T9	C10-C11	-4.36	1.41	1.50
2	B	501	0T9	C3-C4	-4.03	1.42	1.51
2	A	501	0T9	C3-C4	-3.50	1.43	1.51
2	A	501	0T9	C17-C18	-3.25	1.43	1.51
2	B	501	0T9	C21-C18	-3.10	1.46	1.51
2	B	501	0T9	C17-C18	-2.45	1.45	1.51
2	B	501	0T9	C7-C5	-2.36	1.50	1.54
2	B	501	0T9	C2-C1	2.02	1.56	1.51
2	B	501	0T9	C14-C15	2.30	1.59	1.55
2	B	501	0T9	C9-C15	2.40	1.58	1.53
2	B	501	0T9	O1-C1	2.45	1.50	1.43
2	A	501	0T9	C11-C4	2.58	1.38	1.32
2	A	501	0T9	O1-C1	2.62	1.51	1.43
2	A	501	0T9	C10-C9	2.81	1.58	1.53
2	B	501	0T9	C6-C5	3.11	1.60	1.54
2	B	501	0T9	C10-C9	3.22	1.58	1.53
2	B	501	0T9	C13-C12	3.24	1.60	1.53
2	A	501	0T9	C12-C8	3.81	1.60	1.53
2	B	501	0T9	C11-C4	4.24	1.42	1.32
2	A	501	0T9	C21-C15	5.18	1.60	1.53
2	A	501	0T9	C3-C1	5.63	1.62	1.52
2	A	501	0T9	C14-C17	5.92	1.67	1.56
2	B	501	0T9	C12-C8	6.40	1.64	1.53
2	A	501	0T9	C6-C5	6.43	1.66	1.54

All (27) bond angle outliers are listed below:

Mol	Chain	Res	Type	Atoms	Z	Observed(°)	Ideal(°)
2	A	501	0T9	C21-C15-C14	-10.65	99.28	104.25
2	B	501	0T9	C21-C15-C14	-8.75	100.17	104.25
2	A	501	0T9	C24-C23-C20	-7.00	101.01	114.41
2	B	501	0T9	C24-C23-C20	-5.66	103.57	114.41
2	B	501	0T9	C23-C24-C25	-4.57	106.11	115.32
2	A	501	0T9	C2-C6-C5	-3.37	105.76	112.81
2	B	501	0T9	C6-C2-C1	-3.25	106.28	110.42

Continued on next page...

Continued from previous page...

Mol	Chain	Res	Type	Atoms	Z	Observed(°)	Ideal(°)
2	B	501	0T9	C2-C1-C3	-2.97	106.20	110.32
2	B	501	0T9	O2-C18-C21	-2.75	122.67	125.86
2	B	501	0T9	C3-C4-C11	-2.51	116.76	120.59
2	A	501	0T9	C23-C24-C25	-2.46	110.37	115.32
2	B	501	0T9	C7-C5-C6	-2.43	105.50	109.41
2	A	501	0T9	C15-C9-C8	-2.39	105.85	109.09
2	A	501	0T9	C3-C4-C11	-2.32	117.05	120.59
2	A	501	0T9	C13-C14-C15	-2.26	103.73	107.27
2	B	501	0T9	C12-C13-C14	-2.26	108.87	112.80
2	B	501	0T9	C22-C19-C20	-2.18	103.62	109.79
2	B	501	0T9	C13-C12-C8	-2.15	109.38	113.12
2	A	501	0T9	O2-C18-C17	-2.13	121.98	125.22
2	B	501	0T9	C17-C14-C15	-2.09	96.58	100.07
2	B	501	0T9	C23-C20-C19	-2.06	114.85	117.98
2	A	501	0T9	C13-C14-C17	2.29	118.70	116.05
2	A	501	0T9	C16-C14-C15	2.85	117.12	111.73
2	A	501	0T9	C3-C4-C5	2.89	120.38	116.41
2	B	501	0T9	C22-C19-C17	2.99	117.68	111.87
2	B	501	0T9	C21-C18-C17	3.16	113.20	108.97
2	A	501	0T9	C21-C18-C17	3.19	113.23	108.97

There are no chirality outliers.

There are no torsion outliers.

There are no ring outliers.

2 monomers are involved in 2 short contacts:

Mol	Chain	Res	Type	Clashes	Symm-Clashes
2	A	501	0T9	1	0
2	B	501	0T9	1	0

5.7 Other polymers [i](#)

There are no such residues in this entry.

5.8 Polymer linkage issues [i](#)

There are no chain breaks in this entry.

6 Fit of model and data [i](#)

6.1 Protein, DNA and RNA chains [i](#)

In the following table, the column labelled ‘#RSRZ> 2’ contains the number (and percentage) of RSRZ outliers, followed by percent RSRZ outliers for the chain as percentile scores relative to all X-ray entries and entries of similar resolution. The OWAB column contains the minimum, median, 95th percentile and maximum values of the occupancy-weighted average B-factor per residue. The column labelled ‘Q< 0.9’ lists the number of (and percentage) of residues with an average occupancy less than 0.9.

Mol	Chain	Analysed	<RSRZ>	#RSRZ>2	OWAB(Å ²)	Q<0.9
1	A	431/436 (98%)	-0.37	5 (1%) 79 78	12, 23, 43, 68	0
1	B	425/436 (97%)	-0.21	12 (2%) 53 53	13, 25, 55, 72	0
All	All	856/872 (98%)	-0.29	17 (1%) 65 65	12, 24, 51, 72	0

All (17) RSRZ outliers are listed below:

Mol	Chain	Res	Type	RSRZ
1	A	373	GLU	3.0
1	B	330	ASN	2.7
1	B	370	THR	2.6
1	B	355	ILE	2.6
1	B	329	PHE	2.5
1	B	352	ALA	2.5
1	B	326	LEU	2.5
1	B	374	GLY	2.4
1	B	375	ALA	2.4
1	B	354	GLY	2.3
1	B	348	LYS	2.3
1	A	369	VAL	2.2
1	B	413	ASP	2.2
1	A	329	PHE	2.2
1	A	413	ASP	2.2
1	B	344	ARG	2.1
1	A	372	GLU	2.0

6.2 Non-standard residues in protein, DNA, RNA chains [i](#)

There are no non-standard protein/DNA/RNA residues in this entry.

6.3 Carbohydrates [i](#)

There are no carbohydrates in this entry.

6.4 Ligands [i](#)

In the following table, the Atoms column lists the number of modelled atoms in the group and the number defined in the chemical component dictionary. LLDF column lists the quality of electron density of the group with respect to its neighbouring residues in protein, DNA or RNA chains. The B-factors column lists the minimum, median, 95th percentile and maximum values of B factors of atoms in the group. The column labelled 'Q< 0.9' lists the number of atoms with occupancy less than 0.9.

Mol	Type	Chain	Res	Atoms	RSCC	RSR	LLDF	B-factors(\AA^2)	Q<0.9
2	0T9	A	501	31/31	0.93	0.14	2.02	11,15,35,44	0
2	0T9	B	501	31/31	0.96	0.11	0.18	13,16,34,41	0

6.5 Other polymers [i](#)

There are no such residues in this entry.