



# Full wwPDB X-ray Structure Validation Report ⓘ

Feb 13, 2017 – 02:49 am GMT

PDB ID : 5FF2  
Title : HydE from *T. maritima* in complex with (2R,4R)-TDA  
Authors : Rohac, R.; Amara, P.; Benjdia, A.; Martin, L.; Ruffie, P.; Favier, A.; Berteau, O.; Mouesca, J.M.; Fontecilla-Camps, J.C.; Nicolet, Y.  
Deposited on : 2015-12-17  
Resolution : 1.47 Å(reported)

This is a Full wwPDB X-ray Structure Validation Report for a publicly released PDB entry.

We welcome your comments at [validation@mail.wwpdb.org](mailto:validation@mail.wwpdb.org)

A user guide is available at

<http://wwpdb.org/validation/2016/XrayValidationReportHelp>

with specific help available everywhere you see the ⓘ symbol.

---

The following versions of software and data (see [references ⓘ](#)) were used in the production of this report:

MolProbity : 4.02b-467  
Mogul : 1.7.2 (RC1), CSD as538be (2017)  
Xtriage (Phenix) : 1.9-1692  
EDS : trunk28620  
Percentile statistics : 20161228.v01 (using entries in the PDB archive December 28th 2016)  
Refmac : 5.8.0135  
CCP4 : 6.5.0  
Ideal geometry (proteins) : Engh & Huber (2001)  
Ideal geometry (DNA, RNA) : Parkinson et al. (1996)  
Validation Pipeline (wwPDB-VP) : recalc28949

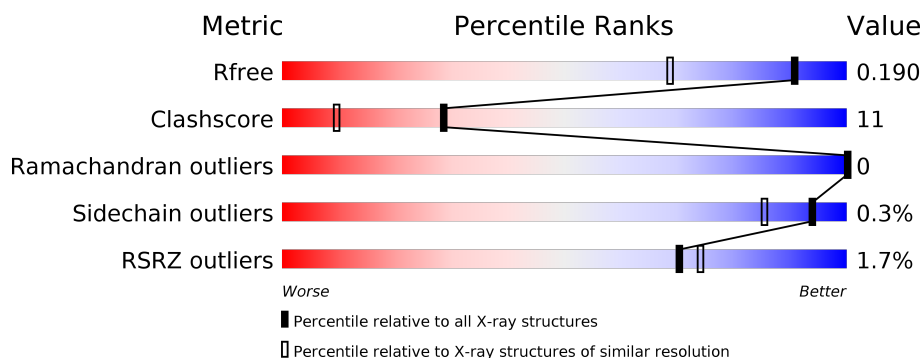
# 1 Overall quality at a glance

The following experimental techniques were used to determine the structure:

*X-RAY DIFFRACTION*

The reported resolution of this entry is 1.47 Å.

Percentile scores (ranging between 0-100) for global validation metrics of the entry are shown in the following graphic. The table shows the number of entries on which the scores are based.



Metric	Whole archive (#Entries)	Similar resolution (#Entries, resolution range(Å))
$R_{free}$	100719	3517 (1.50-1.46)
Clashscore	112137	3795 (1.50-1.46)
Ramachandran outliers	110173	3721 (1.50-1.46)
Sidechain outliers	110143	3719 (1.50-1.46)
RSRZ outliers	101464	3549 (1.50-1.46)

The table below summarises the geometric issues observed across the polymeric chains and their fit to the electron density. The red, orange, yellow and green segments on the lower bar indicate the fraction of residues that contain outliers for  $\geq 3$ , 2, 1 and 0 types of geometric quality criteria. A grey segment represents the fraction of residues that are not modelled. The numeric value for each fraction is indicated below the corresponding segment, with a dot representing fractions  $\leq 5\%$ . The upper red bar (where present) indicates the fraction of residues that have poor fit to the electron density. The numeric value is given above the bar.

Mol	Chain	Length	Quality of chain
1	A	348	<div> <div>2%</div> <div>86%</div> <div>13%</div> </div>

The following table lists non-polymeric compounds, carbohydrate monomers and non-standard residues in protein, DNA, RNA chains that are outliers for geometric or electron-density-fit criteria:

Mol	Type	Chain	Res	Chirality	Geometry	Clashes	Electron density
3	CPS	A	403	-	-	-	X
3	CPS	A	405	-	-	-	X

*Continued on next page...*

*Continued from previous page...*

Mol	Type	Chain	Res	Chirality	Geometry	Clashes	Electron density
3	CPS	A	406[A]	-	-	-	X
3	CPS	A	406[B]	-	-	-	X

## 2 Entry composition [i](#)

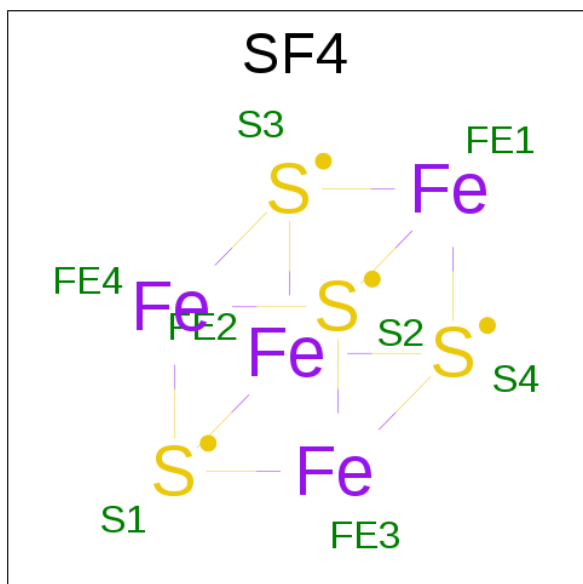
There are 8 unique types of molecules in this entry. The entry contains 3558 atoms, of which 0 are hydrogens and 0 are deuteriums.

In the tables below, the ZeroOcc column contains the number of atoms modelled with zero occupancy, the AltConf column contains the number of residues with at least one atom in alternate conformation and the Trace column contains the number of residues modelled with at most 2 atoms.

- Molecule 1 is a protein called [FeFe] hydrogenase maturase subunit HydE.

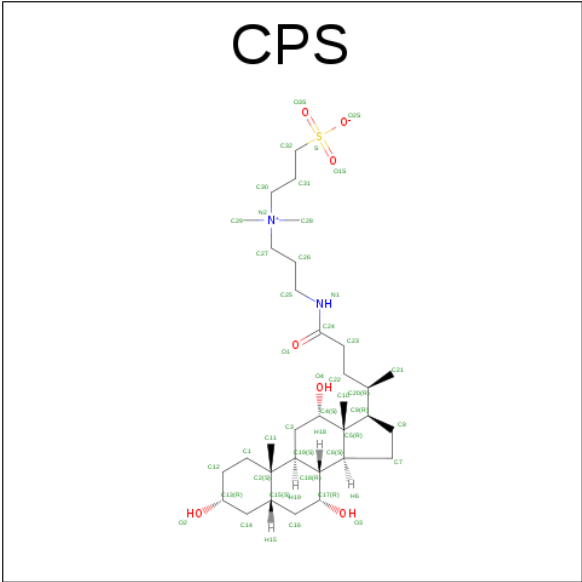
Mol	Chain	Residues	Atoms					ZeroOcc	AltConf	Trace
			Total	C	N	O	S			
1	A	347	2873	1840	489	520	24	1	22	0

- Molecule 2 is IRON/SULFUR CLUSTER (three-letter code: SF4) (formula: Fe<sub>4</sub>S<sub>4</sub>).



Mol	Chain	Residues	Atoms			ZeroOcc	AltConf
			Total	Fe	S		
2	A	1	8	4	4	0	0

- Molecule 3 is 3-[(3-CHOLAMIDOPROPYL)DIMETHYLAMMONIO]-1-PROPANESULFONATE (three-letter code: CPS) (formula: C<sub>32</sub>H<sub>58</sub>N<sub>2</sub>O<sub>7</sub>S).

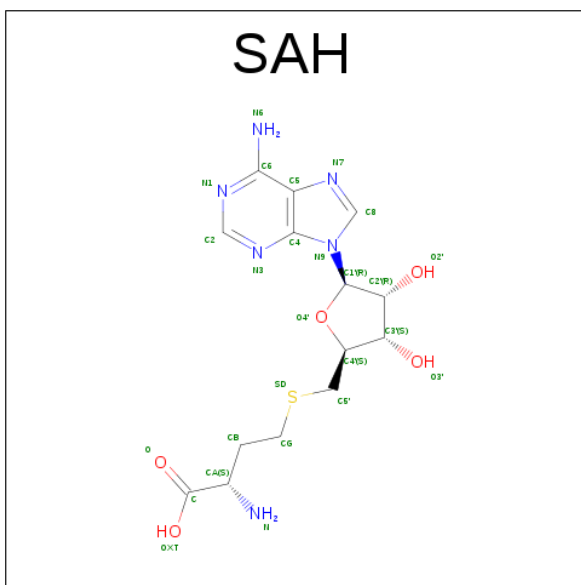


Mol	Chain	Residues	Atoms	ZeroOcc	AltConf
3	A	1	Total C N O S 42 32 2 7 1	0	0
3	A	1	Total C N O S 42 32 2 7 1	0	0
3	A	1	Total C N O 29 24 1 4	0	0
3	A	1	Total C O 26 23 3	0	0
3	A	1	Total C O 50 44 6	0	1

- Molecule 4 is CHLORIDE ION (three-letter code: CL) (formula: Cl).

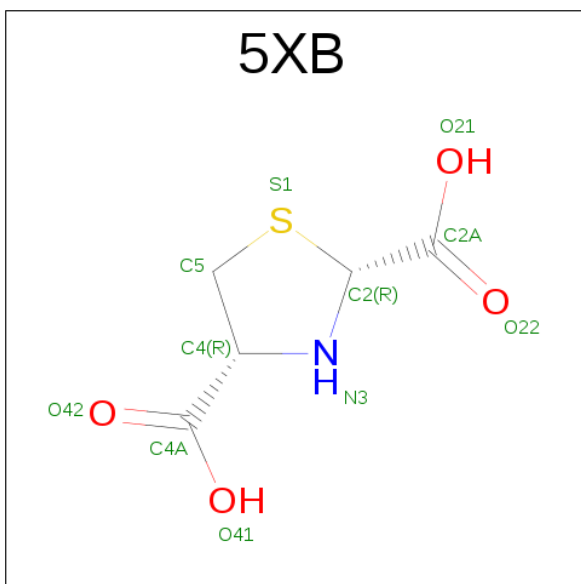
Mol	Chain	Residues	Atoms	ZeroOcc	AltConf
4	A	1	Total Cl 1 1	0	0

- Molecule 5 is S-ADENOSYL-L-HOMOCYSTEINE (three-letter code: SAH) (formula: C<sub>14</sub>H<sub>20</sub>N<sub>6</sub>O<sub>5</sub>S).



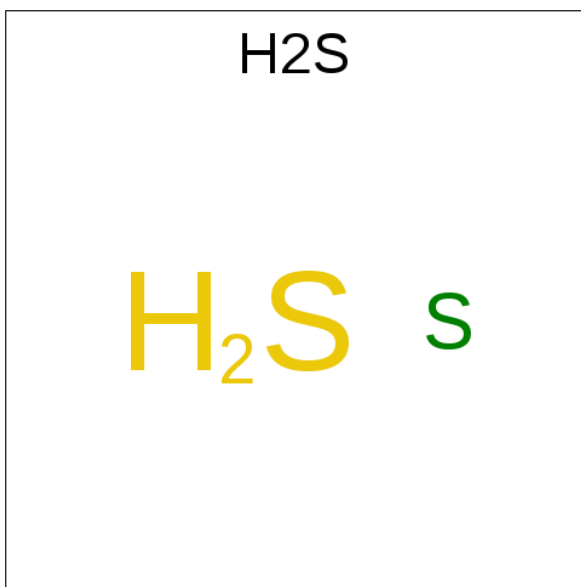
Mol	Chain	Residues	Atoms					ZeroOcc	AltConf
5	A	1	Total	C	N	O	S	0	0
			26	14	6	5	1		

- Molecule 6 is (2 {R},4 {R})-1,3-thiazolidine-2,4-dicarboxylic acid (three-letter code: 5XB) (formula:  $C_5H_7NO_4S$ ).



Mol	Chain	Residues	Atoms					ZeroOcc	AltConf
6	A	1	Total	C	N	O	S	0	0
			11	5	1	4	1		

- Molecule 7 is HYDROSULFURIC ACID (three-letter code: H2S) (formula:  $H_2S$ ).



Mol	Chain	Residues	Atoms	ZeroOcc	AltConf
7	A	1	Total S 1 1	0	0
7	A	1	Total S 1 1	0	1

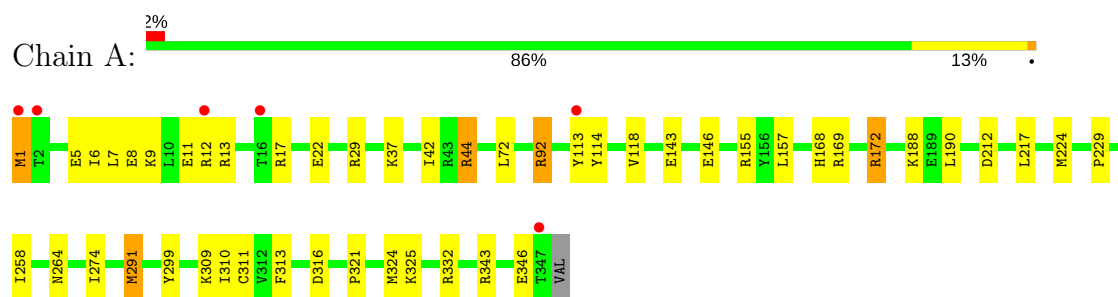
- Molecule 8 is water.

Mol	Chain	Residues	Atoms	ZeroOcc	AltConf
8	A	447	Total O 448 448	0	2

### 3 Residue-property plots [i](#)

These plots are drawn for all protein, RNA and DNA chains in the entry. The first graphic for a chain summarises the proportions of the various outlier classes displayed in the second graphic. The second graphic shows the sequence view annotated by issues in geometry and electron density. Residues are color-coded according to the number of geometric quality criteria for which they contain at least one outlier: green = 0, yellow = 1, orange = 2 and red = 3 or more. A red dot above a residue indicates a poor fit to the electron density ( $RSRZ > 2$ ). Stretches of 2 or more consecutive residues without any outlier are shown as a green connector. Residues present in the sample, but not in the model, are shown in grey.

- Molecule 1: [FeFe] hydrogenase maturase subunit HydE





## 4 Data and refinement statistics

Property	Value	Source
Space group	P 21 21 21	Depositor
Cell constants a, b, c, $\alpha$ , $\beta$ , $\gamma$	51.23Å 79.09Å 86.10Å 90.00° 90.00° 90.00°	Depositor
Resolution (Å)	38.47 – 1.47 38.47 – 1.47	Depositor EDS
% Data completeness (in resolution range)	99.4 (38.47-1.47) 99.4 (38.47-1.47)	Depositor EDS
$R_{merge}$	(Not available)	Depositor
$R_{sym}$	(Not available)	Depositor
$\langle I/\sigma(I) \rangle$ <sup>1</sup>	1.87 (at 1.47Å)	Xtriage
Refinement program	REFMAC 5.8.0131	Depositor
R, $R_{free}$	0.165 , 0.187 0.168 , 0.190	Depositor DCC
$R_{free}$ test set	3009 reflections (5.30%)	DCC
Wilson B-factor (Å <sup>2</sup> )	12.8	Xtriage
Anisotropy	0.525	Xtriage
Bulk solvent $k_{sol}$ (e/Å <sup>3</sup> ), $B_{sol}$ (Å <sup>2</sup> )	0.36 , 51.0	EDS
L-test for twinning <sup>2</sup>	$\langle  L  \rangle = 0.49$ , $\langle L^2 \rangle = 0.32$	Xtriage
Estimated twinning fraction	No twinning to report.	Xtriage
$F_o, F_c$ correlation	0.96	EDS
Total number of atoms	3558	wwPDB-VP
Average B, all atoms (Å <sup>2</sup> )	20.0	wwPDB-VP

Xtriage's analysis on translational NCS is as follows: *The largest off-origin peak in the Patterson function is 5.67% of the height of the origin peak. No significant pseudotranslation is detected.*

<sup>1</sup>Intensities estimated from amplitudes.

<sup>2</sup>Theoretical values of  $\langle |L| \rangle$ ,  $\langle L^2 \rangle$  for acentric reflections are 0.5, 0.333 respectively for untwinned datasets, and 0.375, 0.2 for perfectly twinned datasets.

## 5 Model quality

### 5.1 Standard geometry

Bond lengths and bond angles in the following residue types are not validated in this section: SAH, CL, SF4, H2S, 5XB, CPS

The Z score for a bond length (or angle) is the number of standard deviations the observed value is removed from the expected value. A bond length (or angle) with  $|Z| > 5$  is considered an outlier worth inspection. RMSZ is the root-mean-square of all Z scores of the bond lengths (or angles).

Mol	Chain	Bond lengths		Bond angles	
		RMSZ	$\# Z  > 5$	RMSZ	$\# Z  > 5$
1	A	1.04	4/2980 (0.1%)	1.11	17/4028 (0.4%)

All (4) bond length outliers are listed below:

Mol	Chain	Res	Type	Atoms	Z	Observed(Å)	Ideal(Å)
1	A	92	ARG	CZ-NH1	6.09	1.41	1.33
1	A	172	ARG	CZ-NH1	-5.38	1.26	1.33
1	A	113[A]	TYR	CG-CD1	-5.25	1.32	1.39
1	A	113[B]	TYR	CG-CD1	-5.25	1.32	1.39

All (17) bond angle outliers are listed below:

Mol	Chain	Res	Type	Atoms	Z	Observed(°)	Ideal(°)
1	A	291[A]	MET	CG-SD-CE	-11.51	81.79	100.20
1	A	291[B]	MET	CG-SD-CE	-11.51	81.79	100.20
1	A	29	ARG	NE-CZ-NH2	9.52	125.06	120.30
1	A	29	ARG	NE-CZ-NH1	-8.20	116.20	120.30
1	A	332	ARG	NE-CZ-NH2	-7.88	116.36	120.30
1	A	92	ARG	NE-CZ-NH2	-7.21	116.70	120.30
1	A	212	ASP	CB-CG-OD2	-6.85	112.13	118.30
1	A	113[A]	TYR	CB-CG-CD1	-6.45	117.13	121.00
1	A	113[B]	TYR	CB-CG-CD1	-6.45	117.13	121.00
1	A	172	ARG	NE-CZ-NH2	-6.42	117.09	120.30
1	A	44	ARG	NE-CZ-NH2	-5.81	117.39	120.30
1	A	72	LEU	CB-CG-CD2	5.68	120.66	111.00
1	A	313	PHE	CB-CG-CD1	5.43	124.60	120.80
1	A	343	ARG	NE-CZ-NH2	-5.32	117.64	120.30
1	A	169	ARG	NE-CZ-NH2	-5.27	117.67	120.30
1	A	17	ARG	NE-CZ-NH2	-5.15	117.72	120.30
1	A	155	ARG	NE-CZ-NH2	-5.15	117.72	120.30

There are no chirality outliers.

There are no planarity outliers.

## 5.2 Too-close contacts

In the following table, the Non-H and H(model) columns list the number of non-hydrogen atoms and hydrogen atoms in the chain respectively. The H(added) column lists the number of hydrogen atoms added and optimized by MolProbity. The Clashes column lists the number of clashes within the asymmetric unit, whereas Symm-Clashes lists symmetry related clashes.

Mol	Chain	Non-H	H(model)	H(added)	Clashes	Symm-Clashes
1	A	2873	0	2886	55	0
2	A	8	0	0	0	0
3	A	189	0	262	24	0
4	A	1	0	0	0	0
5	A	26	0	19	0	0
6	A	11	0	0	0	0
7	A	2	0	0	1	0
8	A	448	0	0	23	3
All	All	3558	0	3167	69	3

The all-atom clashscore is defined as the number of clashes found per 1000 atoms (including hydrogen atoms). The all-atom clashscore for this structure is 11.

All (69) close contacts within the same asymmetric unit are listed below, sorted by their clash magnitude.

Atom-1	Atom-2	Interatomic distance (Å)	Clash overlap (Å)
1:A:309:LYS:CB	8:A:860:HOH:O	1.93	1.16
3:A:403:CPS:H25	8:A:840:HOH:O	1.48	1.12
1:A:324[B]:MET:CE	3:A:406[B]:CPS:C11	2.38	1.01
1:A:324[B]:MET:HE2	3:A:406[B]:CPS:H11B	1.44	0.95
1:A:311:CYS:SG	7:A:410:H2S:S	2.66	0.93
1:A:324[B]:MET:HE2	3:A:406[B]:CPS:C11	1.97	0.93
1:A:44:ARG:CZ	8:A:501:HOH:O	2.16	0.91
1:A:6:ILE:HD11	1:A:22:GLU:CG	2.02	0.88
1:A:44:ARG:NH2	8:A:501:HOH:O	2.09	0.85
1:A:143:GLU:HG3	8:A:843:HOH:O	1.74	0.85
1:A:37[B]:LYS:CD	8:A:616:HOH:O	2.29	0.80
1:A:324[B]:MET:HE3	3:A:406[B]:CPS:C11	2.10	0.80
1:A:8:GLU:CD	1:A:12:ARG:NH1	2.35	0.79
1:A:6:ILE:HD11	1:A:22:GLU:HG2	1.67	0.77
1:A:37[B]:LYS:HG3	8:A:616:HOH:O	1.85	0.75

*Continued on next page...*

*Continued from previous page...*

Atom-1	Atom-2	Interatomic distance (Å)	Clash overlap (Å)
1:A:324[B]:MET:CE	3:A:406[B]:CPS:H11B	2.09	0.72
1:A:6:ILE:HD11	1:A:22:GLU:HG3	1.70	0.71
1:A:37[B]:LYS:CG	8:A:616:HOH:O	2.37	0.69
3:A:403:CPS:C25	8:A:840:HOH:O	2.20	0.68
1:A:309:LYS:CB	8:A:760:HOH:O	2.42	0.67
1:A:321:PRO:HB3	3:A:406[A]:CPS:H11A	1.75	0.67
1:A:8:GLU:HG2	1:A:12:ARG:CZ	2.25	0.66
1:A:157:LEU:HD23	1:A:224[A]:MET:HE2	1.78	0.66
1:A:1:MET:HB2	1:A:5:GLU:HB2	1.82	0.62
1:A:325[B]:LYS:NZ	8:A:503:HOH:O	2.32	0.62
1:A:157:LEU:CD2	1:A:224[A]:MET:HE2	2.31	0.61
1:A:324[B]:MET:CE	3:A:406[B]:CPS:H11	2.30	0.60
1:A:168:HIS:HE1	1:A:172:ARG:HH11	1.49	0.59
1:A:188[B]:LYS:CG	8:A:519:HOH:O	2.52	0.57
1:A:92:ARG:HH12	1:A:316:ASP:HB3	1.69	0.57
3:A:406[A]:CPS:H4	3:A:406[A]:CPS:H21A	1.87	0.56
1:A:217:LEU:HD11	8:A:511:HOH:O	2.06	0.56
1:A:299:TYR:HE2	8:A:525:HOH:O	1.91	0.54
1:A:324[B]:MET:HE3	3:A:406[B]:CPS:H11A	1.88	0.53
3:A:406[A]:CPS:H9	8:A:842:HOH:O	2.08	0.53
1:A:168:HIS:CE1	1:A:172:ARG:HH11	2.26	0.52
1:A:9:LYS:CD	8:A:933:HOH:O	2.58	0.51
1:A:8:GLU:HG3	8:A:845:HOH:O	2.09	0.50
1:A:114[B]:TYR:CD1	1:A:118:VAL:HG11	2.46	0.50
1:A:6:ILE:CD1	1:A:22:GLU:HG3	2.39	0.50
1:A:291[B]:MET:CE	8:A:929:HOH:O	2.60	0.50
1:A:324[B]:MET:HE3	3:A:406[B]:CPS:H11	1.90	0.49
1:A:324[B]:MET:HE2	3:A:406[B]:CPS:H11	1.92	0.49
1:A:1:MET:HB2	1:A:5:GLU:CB	2.41	0.49
1:A:8:GLU:CG	1:A:12:ARG:NH1	2.76	0.48
1:A:229:PRO:HG3	1:A:274:ILE:HD13	1.96	0.48
3:A:406[B]:CPS:H21A	3:A:406[B]:CPS:H4	1.96	0.48
1:A:168:HIS:CE1	1:A:172:ARG:HD3	2.49	0.47
1:A:6:ILE:CD1	1:A:22:GLU:CG	2.86	0.47
3:A:403:CPS:H4	3:A:403:CPS:H21A	1.96	0.47
1:A:324[B]:MET:CE	3:A:406[B]:CPS:H11A	2.38	0.47
3:A:406[A]:CPS:H8	8:A:721:HOH:O	2.15	0.47
3:A:406[A]:CPS:H8	8:A:842:HOH:O	2.17	0.44
1:A:114[B]:TYR:CE1	1:A:118:VAL:HG11	2.52	0.44
3:A:406[A]:CPS:H3	3:A:406[A]:CPS:H1	1.66	0.43
3:A:406[A]:CPS:C9	8:A:842:HOH:O	2.66	0.43

*Continued on next page...*

Continued from previous page...

Atom-1	Atom-2	Interatomic distance (Å)	Clash overlap (Å)
1:A:310:ILE:O	1:A:311:CYS:HB2	2.17	0.43
1:A:224[B]:MET:HA	1:A:264:ASN:O	2.20	0.42
1:A:157:LEU:HD23	1:A:224[A]:MET:CE	2.49	0.41
1:A:224[A]:MET:HA	1:A:264:ASN:O	2.20	0.41
1:A:42:ILE:HD12	1:A:258:ILE:HG12	2.03	0.41
1:A:13:ARG:NH1	1:A:346:GLU:OE1	2.53	0.41
1:A:146[A]:GLU:HG2	1:A:190:LEU:HD21	2.02	0.41
3:A:406[A]:CPS:C8	8:A:842:HOH:O	2.68	0.41
1:A:7:LEU:O	1:A:11:GLU:HG3	2.21	0.41
1:A:146[B]:GLU:HG2	1:A:190:LEU:HD21	2.02	0.41
3:A:406[A]:CPS:H10A	3:A:406[A]:CPS:H3A	1.86	0.41
3:A:405:CPS:H4	3:A:405:CPS:H21A	2.03	0.40

All (3) symmetry-related close contacts are listed below. The label for Atom-2 includes the symmetry operator and encoded unit-cell translations to be applied.

Atom-1	Atom-2	Interatomic distance (Å)	Clash overlap (Å)
8:A:725:HOH:O	8:A:881:HOH:O[2_655]	2.08	0.12
8:A:842:HOH:O	8:A:872:HOH:O[4_555]	2.09	0.11
8:A:604:HOH:O	8:A:858:HOH:O[2_655]	2.17	0.03

## 5.3 Torsion angles [i](#)

### 5.3.1 Protein backbone [i](#)

In the following table, the Percentiles column shows the percent Ramachandran outliers of the chain as a percentile score with respect to all X-ray entries followed by that with respect to entries of similar resolution.

The Analysed column shows the number of residues for which the backbone conformation was analysed, and the total number of residues.

Mol	Chain	Analysed	Favoured	Allowed	Outliers	Percentiles	
1	A	366/348 (105%)	353 (96%)	13 (4%)	0	100	100

There are no Ramachandran outliers to report.

### 5.3.2 Protein sidechains [i](#)

In the following table, the Percentiles column shows the percent sidechain outliers of the chain as a percentile score with respect to all X-ray entries followed by that with respect to entries of similar resolution.

The Analysed column shows the number of residues for which the sidechain conformation was analysed, and the total number of residues.

Mol	Chain	Analysed	Rotameric	Outliers	Percentiles	
1	A	309/304 (102%)	308 (100%)	1 (0%)	94	85

All (1) residues with a non-rotameric sidechain are listed below:

Mol	Chain	Res	Type
1	A	1	MET

Some sidechains can be flipped to improve hydrogen bonding and reduce clashes. All (1) such sidechains are listed below:

Mol	Chain	Res	Type
1	A	168	HIS

### 5.3.3 RNA [i](#)

There are no RNA molecules in this entry.

## 5.4 Non-standard residues in protein, DNA, RNA chains [i](#)

There are no non-standard protein/DNA/RNA residues in this entry.

## 5.5 Carbohydrates [i](#)

There are no carbohydrates in this entry.

## 5.6 Ligand geometry [i](#)

Of 12 ligands modelled in this entry, 2 are modelled with single atom and 1 is monoatomic - leaving 9 for Mogul analysis.

In the following table, the Counts columns list the number of bonds (or angles) for which Mogul statistics could be retrieved, the number of bonds (or angles) that are observed in the model and the number of bonds (or angles) that are defined in the chemical component dictionary. The Link

column lists molecule types, if any, to which the group is linked. The Z score for a bond length (or angle) is the number of standard deviations the observed value is removed from the expected value. A bond length (or angle) with  $|Z| > 2$  is considered an outlier worth inspection. RMSZ is the root-mean-square of all Z scores of the bond lengths (or angles).

Mol	Type	Chain	Res	Link	Bond lengths			Bond angles		
					Counts	RMSZ	# Z  > 2	Counts	RMSZ	# Z  > 2
2	SF4	A	401	1,5	0,12,12	0.00	-	0,24,24	0.00	-
3	CPS	A	402	-	45,45,45	1.35	6 (13%)	68,70,70	1.19	4 (5%)
3	CPS	A	403	-	45,45,45	1.33	5 (11%)	68,70,70	1.77	13 (19%)
3	CPS	A	404	-	32,32,45	1.05	3 (9%)	51,51,70	1.32	8 (15%)
3	CPS	A	405	-	29,29,45	1.44	4 (13%)	47,47,70	1.56	9 (19%)
3	CPS	A	406[A]	-	28,28,45	1.31	3 (10%)	46,46,70	2.15	17 (36%)
3	CPS	A	406[B]	-	28,28,45	0.86	0	46,46,70	1.60	10 (21%)
5	SAH	A	408	2	20,28,28	1.12	2 (10%)	20,40,40	2.12	4 (20%)
6	5XB	A	409	-	3,11,11	0.83	0	3,15,15	2.65	2 (66%)

In the following table, the Chirals column lists the number of chiral outliers, the number of chiral centers analysed, the number of these observed in the model and the number defined in the chemical component dictionary. Similar counts are reported in the Torsion and Rings columns. '-' means no outliers of that kind were identified.

Mol	Type	Chain	Res	Link	Chirals	Torsions	Rings
2	SF4	A	401	1,5	-	0/0/48/48	0/6/5/5
3	CPS	A	402	-	-	0/25/90/90	0/4/4/4
3	CPS	A	403	-	-	1/25/90/90	0/4/4/4
3	CPS	A	404	-	-	0/9/74/90	0/4/4/4
3	CPS	A	405	-	-	0/6/71/90	0/4/4/4
3	CPS	A	406[A]	-	-	0/4/69/90	0/4/4/4
3	CPS	A	406[B]	-	-	0/4/69/90	0/4/4/4
5	SAH	A	408	2	-	0/7/31/31	0/3/3/3
6	5XB	A	409	-	-	0/0/17/17	0/1/1/1

All (23) bond length outliers are listed below:

Mol	Chain	Res	Type	Atoms	Z	Observed(Å)	Ideal(Å)
3	A	402	CPS	C32-S	-5.72	1.68	1.77
3	A	403	CPS	C32-S	-5.48	1.69	1.77
3	A	406[A]	CPS	C5-C9	-4.36	1.47	1.55
3	A	404	CPS	C2-C15	-3.05	1.50	1.55
3	A	403	CPS	C5-C4	-2.54	1.50	1.54
3	A	402	CPS	C30-N2	-2.52	1.46	1.52
5	A	408	SAH	C4-N3	-2.52	1.31	1.35

*Continued on next page...*

*Continued from previous page...*

Mol	Chain	Res	Type	Atoms	Z	Observed(Å)	Ideal(Å)
3	A	403	CPS	C22-C23	-2.36	1.45	1.52
3	A	404	CPS	C5-C6	-2.32	1.51	1.55
3	A	403	CPS	C23-C24	-2.27	1.47	1.51
3	A	406[A]	CPS	C2-C19	-2.21	1.51	1.56
3	A	402	CPS	C1-C12	-2.11	1.48	1.53
3	A	406[A]	CPS	C18-C6	-2.10	1.49	1.53
3	A	404	CPS	C3-C19	-2.07	1.50	1.53
3	A	405	CPS	C14-C15	2.15	1.57	1.53
3	A	402	CPS	O3-C17	2.27	1.48	1.43
3	A	403	CPS	C16-C17	2.30	1.56	1.52
3	A	402	CPS	O1-C24	2.31	1.28	1.23
5	A	408	SAH	C5-C4	2.42	1.46	1.40
3	A	402	CPS	C14-C13	2.55	1.56	1.51
3	A	405	CPS	O3-C17	3.23	1.50	1.43
3	A	405	CPS	O4-C4	3.49	1.49	1.43
3	A	405	CPS	C3-C19	3.54	1.59	1.53

All (67) bond angle outliers are listed below:

Mol	Chain	Res	Type	Atoms	Z	Observed(°)	Ideal(°)
5	A	408	SAH	N3-C2-N1	-6.60	123.11	128.86
3	A	403	CPS	O2S-S-O3S	-6.13	97.33	111.37
3	A	406[A]	CPS	C3-C4-C5	-5.50	105.53	111.22
3	A	406[A]	CPS	C15-C14-C13	-5.05	105.47	112.87
3	A	406[A]	CPS	C1-C2-C19	-4.10	104.85	111.39
3	A	406[A]	CPS	C14-C13-C12	-4.09	105.47	110.55
3	A	403	CPS	C5-C9-C20	-3.82	114.86	119.49
3	A	406[B]	CPS	C16-C15-C14	-3.71	106.92	111.13
3	A	406[A]	CPS	C14-C15-C2	-3.63	108.69	112.66
3	A	405	CPS	C3-C19-C2	-3.53	110.01	113.74
3	A	404	CPS	C11-C2-C19	-3.41	106.29	111.16
3	A	406[A]	CPS	C22-C20-C9	-3.34	103.60	112.36
3	A	405	CPS	C9-C5-C6	-3.26	96.77	100.08
3	A	405	CPS	C1-C12-C13	-3.23	106.30	110.42
3	A	404	CPS	O2-C13-C12	-3.08	102.65	110.10
3	A	403	CPS	C23-C22-C20	-3.07	109.04	114.45
3	A	403	CPS	C28-N2-C30	-2.81	102.15	109.45
3	A	406[B]	CPS	C10-C5-C9	-2.64	107.05	111.23
3	A	405	CPS	C19-C18-C17	-2.63	108.83	111.92
3	A	406[A]	CPS	C19-C18-C6	-2.42	106.34	109.64
3	A	403	CPS	C26-C27-N2	-2.33	110.29	115.34
3	A	404	CPS	C10-C5-C9	-2.33	107.55	111.23

*Continued on next page...*



*Continued from previous page...*

Mol	Chain	Res	Type	Atoms	Z	Observed(°)	Ideal(°)
3	A	404	CPS	C15-C14-C13	-2.31	109.48	112.87
3	A	406[A]	CPS	C7-C6-C18	-2.28	115.09	118.32
3	A	404	CPS	C23-C22-C20	-2.18	110.62	114.45
3	A	406[A]	CPS	C8-C9-C5	-2.14	101.44	103.57
3	A	406[A]	CPS	C9-C5-C4	-2.14	115.70	117.67
6	A	409	5XB	C4-C5-S1	-2.13	102.04	105.11
3	A	404	CPS	C16-C15-C14	-2.12	108.72	111.13
3	A	406[A]	CPS	C11-C2-C19	-2.08	108.18	111.16
3	A	403	CPS	C14-C13-C12	-2.07	107.97	110.55
3	A	405	CPS	C15-C16-C17	-2.07	112.15	114.44
3	A	405	CPS	C5-C6-C18	-2.04	112.15	114.77
3	A	403	CPS	C3-C19-C18	2.12	113.89	110.82
3	A	406[A]	CPS	C10-C5-C6	2.16	114.64	111.23
3	A	403	CPS	C19-C18-C17	2.17	114.48	111.92
3	A	406[B]	CPS	C15-C16-C17	2.19	116.86	114.44
3	A	405	CPS	C8-C9-C5	2.22	105.78	103.57
3	A	406[A]	CPS	C6-C5-C4	2.24	109.51	107.39
3	A	406[A]	CPS	C6-C18-C17	2.33	114.96	111.80
5	A	408	SAH	C4'-O4'-C1'	2.38	112.30	109.77
3	A	403	CPS	C16-C15-C14	2.39	113.84	111.13
3	A	404	CPS	C1-C2-C15	2.39	111.50	107.79
3	A	406[A]	CPS	C11-C2-C15	2.48	114.58	110.30
3	A	405	CPS	C6-C5-C4	2.56	109.82	107.39
3	A	404	CPS	C14-C15-C2	2.58	115.47	112.66
3	A	406[B]	CPS	C12-C1-C2	2.59	117.32	112.80
3	A	406[B]	CPS	C10-C5-C4	2.64	111.76	109.08
5	A	408	SAH	C5'-C4'-C3'	2.65	121.80	115.05
3	A	402	CPS	C23-C22-C20	2.73	119.26	114.45
3	A	406[B]	CPS	C7-C6-C5	2.74	106.30	103.57
3	A	406[B]	CPS	C15-C14-C13	2.77	116.93	112.87
3	A	402	CPS	C29-N2-C30	2.86	116.89	109.45
3	A	403	CPS	C3-C4-C5	2.87	114.20	111.22
3	A	406[B]	CPS	C1-C2-C19	2.93	116.06	111.39
3	A	403	CPS	O2S-S-O1S	2.96	118.15	111.37
3	A	406[B]	CPS	C1-C12-C13	2.97	114.20	110.42
3	A	406[A]	CPS	C19-C18-C17	3.01	115.45	111.92
3	A	402	CPS	C12-C1-C2	3.02	118.07	112.80
3	A	405	CPS	C7-C6-C5	3.64	107.20	103.57
3	A	403	CPS	C27-C26-C25	3.67	118.31	111.13
3	A	402	CPS	O1S-S-C32	3.71	109.98	106.79
3	A	406[B]	CPS	C14-C15-C2	3.89	116.90	112.66
5	A	408	SAH	CG-CB-CA	3.92	124.23	112.97

*Continued on next page...*

*Continued from previous page...*

Mol	Chain	Res	Type	Atoms	Z	Observed(°)	Ideal(°)
3	A	406[A]	CPS	C1-C2-C15	3.93	113.88	107.79
6	A	409	5XB	C5-S1-C2	4.00	98.65	91.07
3	A	403	CPS	O2S-S-C32	5.96	113.39	106.06

There are no chirality outliers.

All (1) torsion outliers are listed below:

Mol	Chain	Res	Type	Atoms
3	A	403	CPS	C23-C24-N1-C25

There are no ring outliers.

4 monomers are involved in 24 short contacts:

Mol	Chain	Res	Type	Clashes	Symm-Clashes
3	A	403	CPS	3	0
3	A	405	CPS	1	0
3	A	406[A]	CPS	9	0
3	A	406[B]	CPS	11	0

## 5.7 Other polymers [i](#)

There are no such residues in this entry.

## 5.8 Polymer linkage issues [i](#)

There are no chain breaks in this entry.

## 6 Fit of model and data [i](#)

### 6.1 Protein, DNA and RNA chains [i](#)

In the following table, the column labelled ‘#RSRZ > 2’ contains the number (and percentage) of RSRZ outliers, followed by percent RSRZ outliers for the chain as percentile scores relative to all X-ray entries and entries of similar resolution. The OWAB column contains the minimum, median, 95<sup>th</sup> percentile and maximum values of the occupancy-weighted average B-factor per residue. The column labelled ‘Q < 0.9’ lists the number of (and percentage) of residues with an average occupancy less than 0.9.

Mol	Chain	Analysed	<RSRZ>	#RSRZ>2	OWAB(Å <sup>2</sup> )	Q<0.9
1	A	347/348 (99%)	-0.07	6 (1%) 70 74	10, 15, 31, 49	7 (2%)

All (6) RSRZ outliers are listed below:

Mol	Chain	Res	Type	RSRZ
1	A	1	MET	3.7
1	A	2	THR	3.3
1	A	113[A]	TYR	2.8
1	A	16	THR	2.4
1	A	347	THR	2.3
1	A	12	ARG	2.1

### 6.2 Non-standard residues in protein, DNA, RNA chains [i](#)

There are no non-standard protein/DNA/RNA residues in this entry.

### 6.3 Carbohydrates [i](#)

There are no carbohydrates in this entry.

### 6.4 Ligands [i](#)

In the following table, the Atoms column lists the number of modelled atoms in the group and the number defined in the chemical component dictionary. LLDF column lists the quality of electron density of the group with respect to its neighbouring residues in protein, DNA or RNA chains. The B-factors column lists the minimum, median, 95<sup>th</sup> percentile and maximum values of B factors of atoms in the group. The column labelled ‘Q < 0.9’ lists the number of atoms with occupancy less than 0.9.

Mol	Type	Chain	Res	Atoms	RSCC	RSR	LLDF	B-factors( $\text{\AA}^2$ )	Q<0.9
3	CPS	A	405	26/42	0.44	0.34	15.88	30,36,40,41	0
3	CPS	A	406[A]	25/42	0.76	0.20	5.60	12,15,17,17	25
3	CPS	A	406[B]	25/42	0.76	0.20	5.47	24,29,38,45	25
3	CPS	A	403	42/42	0.86	0.14	2.15	14,18,41,46	5
7	H2S	A	410	1/1	0.92	0.11	0.62	23,23,23,23	1
3	CPS	A	404	29/42	0.93	0.08	0.03	14,17,32,38	0
3	CPS	A	402	42/42	0.96	0.07	-0.06	11,13,23,24	5
6	5XB	A	409	11/11	0.96	0.08	-0.34	15,19,24,25	0
5	SAH	A	408	26/26	0.96	0.08	-0.38	12,14,22,22	0
2	SF4	A	401	8/8	0.99	0.05	-2.45	11,12,13,18	0
4	CL	A	407	1/1	1.00	0.05	-2.97	14,14,14,14	0
7	H2S	A	411[A]	1/1	0.82	0.17	-	19,19,19,19	1

## 6.5 Other polymers [i](#)

There are no such residues in this entry.