



Full wwPDB X-ray Structure Validation Report ⓘ

Feb 13, 2017 – 07:56 pm GMT

PDB ID : 2FHR
Title : Trypanosoma Rangeli Sialidase In Complex With 2,3- Difluorosialic Acid (Covalent Intermediate)
Authors : Amaya, M.F.; Alzari, P.M.; Buschiazzi, A.
Deposited on : 2005-12-26
Resolution : 2.20 Å(reported)

This is a Full wwPDB X-ray Structure Validation Report for a publicly released PDB entry.

We welcome your comments at validation@mail.wwpdb.org

A user guide is available at

<http://wwpdb.org/validation/2016/XrayValidationReportHelp>

with specific help available everywhere you see the ⓘ symbol.

The following versions of software and data (see [references ⓘ](#)) were used in the production of this report:

MolProbity : 4.02b-467
Mogul : 1.7.2 (RC1), CSD as538be (2017)
Xtriage (Phenix) : 1.9-1692
EDS : trunk28620
Percentile statistics : 20161228.v01 (using entries in the PDB archive December 28th 2016)
Refmac : 5.8.0135
CCP4 : 6.5.0
Ideal geometry (proteins) : Engh & Huber (2001)
Ideal geometry (DNA, RNA) : Parkinson et al. (1996)
Validation Pipeline (wwPDB-VP) : recalc28949

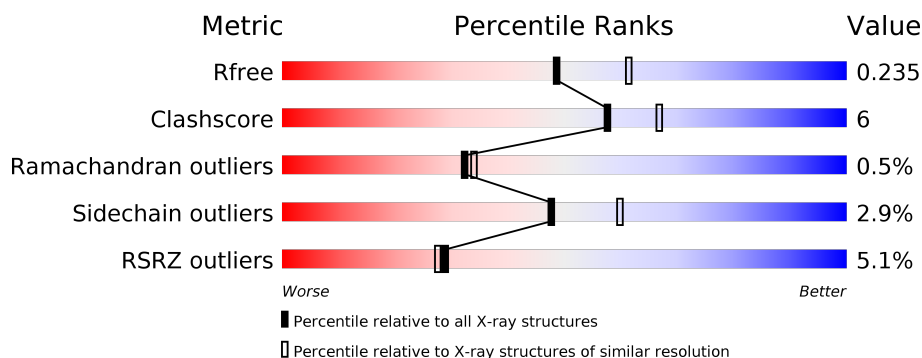
1 Overall quality at a glance

The following experimental techniques were used to determine the structure:

X-RAY DIFFRACTION

The reported resolution of this entry is 2.20 Å.

Percentile scores (ranging between 0-100) for global validation metrics of the entry are shown in the following graphic. The table shows the number of entries on which the scores are based.



Metric	Whole archive (#Entries)	Similar resolution (#Entries, resolution range(Å))
R_{free}	100719	4002 (2.20-2.20)
Clashscore	112137	4730 (2.20-2.20)
Ramachandran outliers	110173	4656 (2.20-2.20)
Sidechain outliers	110143	4657 (2.20-2.20)
RSRZ outliers	101464	4033 (2.20-2.20)

The table below summarises the geometric issues observed across the polymeric chains and their fit to the electron density. The red, orange, yellow and green segments on the lower bar indicate the fraction of residues that contain outliers for ≥ 3 , 2, 1 and 0 types of geometric quality criteria. A grey segment represents the fraction of residues that are not modelled. The numeric value for each fraction is indicated below the corresponding segment, with a dot representing fractions $\leq 5\%$. The upper red bar (where present) indicates the fraction of residues that have poor fit to the electron density. The numeric value is given above the bar.

Mol	Chain	Length	Quality of chain
1	A	652	<div> <div>5%</div> <div>84%</div> <div>11%</div> <div>••</div> </div>

The following table lists non-polymeric compounds, carbohydrate monomers and non-standard residues in protein, DNA, RNA chains that are outliers for geometric or electron-density-fit criteria:

Mol	Type	Chain	Res	Chirality	Geometry	Clashes	Electron density
4	GOL	A	903	-	-	-	X

2 Entry composition

There are 5 unique types of molecules in this entry. The entry contains 5295 atoms, of which 0 are hydrogens and 0 are deuteriums.

In the tables below, the ZeroOcc column contains the number of atoms modelled with zero occupancy, the AltConf column contains the number of residues with at least one atom in alternate conformation and the Trace column contains the number of residues modelled with at most 2 atoms.

- Molecule 1 is a protein called sialidase.

Mol	Chain	Residues	Atoms					ZeroOcc	AltConf	Trace
			Total	C	N	O	S			
1	A	625	4870	3070	862	922	16	0	5	0

There are 18 discrepancies between the modelled and reference sequences:

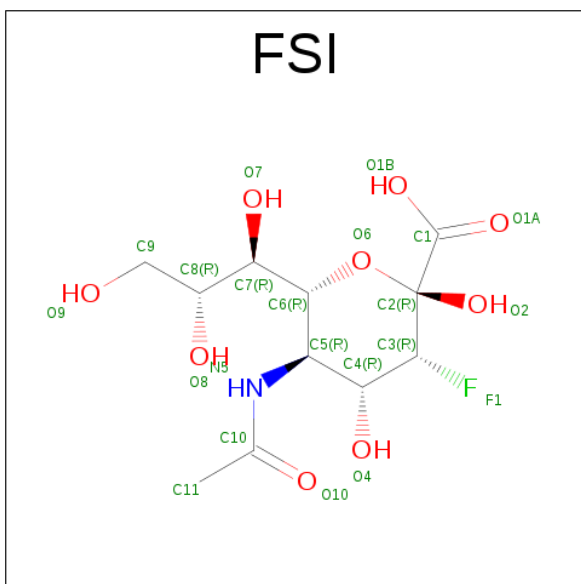
Chain	Residue	Modelled	Actual	Comment	Reference
A	-13	MET	-	INITIATING METHIONINE	GB 2894810
A	-12	GLY	-	CLONING ARTIFACT	GB 2894810
A	-11	GLY	-	CLONING ARTIFACT	GB 2894810
A	-10	SER	-	CLONING ARTIFACT	GB 2894810
A	-9	HIS	-	EXPRESSION TAG	GB 2894810
A	-8	HIS	-	EXPRESSION TAG	GB 2894810
A	-7	HIS	-	EXPRESSION TAG	GB 2894810
A	-6	HIS	-	EXPRESSION TAG	GB 2894810
A	-5	HIS	-	EXPRESSION TAG	GB 2894810
A	-4	HIS	-	EXPRESSION TAG	GB 2894810
A	-3	GLY	-	CLONING ARTIFACT	GB 2894810
A	-2	MET	-	CLONING ARTIFACT	GB 2894810
A	-1	ALA	-	CLONING ARTIFACT	GB 2894810
A	0	SER	-	CLONING ARTIFACT	GB 2894810
A	50	ILE	THR	SEE REMARK 999	GB 2894810
A	186	ALA	GLY	SEE REMARK 999	GB 2894810
A	372	LEU	PHE	SEE REMARK 999	GB 2894810
A	606	VAL	ILE	SEE REMARK 999	GB 2894810

- Molecule 2 is SULFATE ION (three-letter code: SO4) (formula: O₄S).



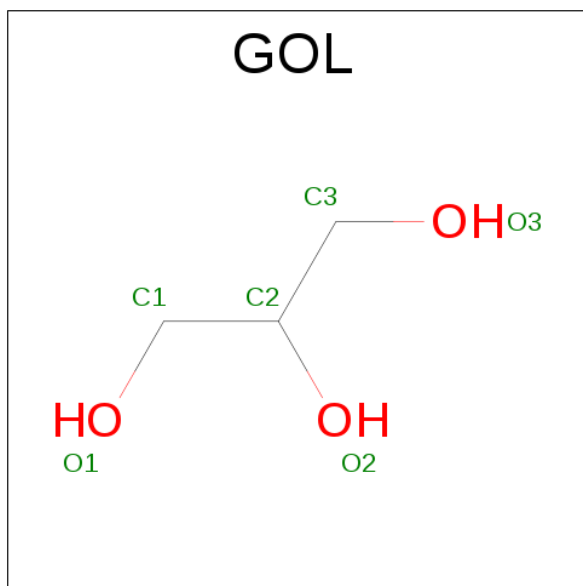
Mol	Chain	Residues	Atoms			ZeroOcc	AltConf
2	A	1	Total	O	S	0	0
			5	4	1		
2	A	1	Total	O	S	0	0
			5	4	1		

- Molecule 3 is 5-(ACETYLAMINO)-2,6-ANHYDRO-3,5-DIDEOXY-3-FLUORONONONIC ACID (three-letter code: FSI) (formula: $C_{11}H_{18}FNO_9$).



Mol	Chain	Residues	Atoms					ZeroOcc	AltConf
3	A	1	Total	C	F	N	O	0	0
			21	11	1	1	8		

- Molecule 4 is GLYCEROL (three-letter code: GOL) (formula: $C_3H_8O_3$).



Mol	Chain	Residues	Atoms			ZeroOcc	AltConf
4	A	1	Total	C	O	0	0
			6	3	3		

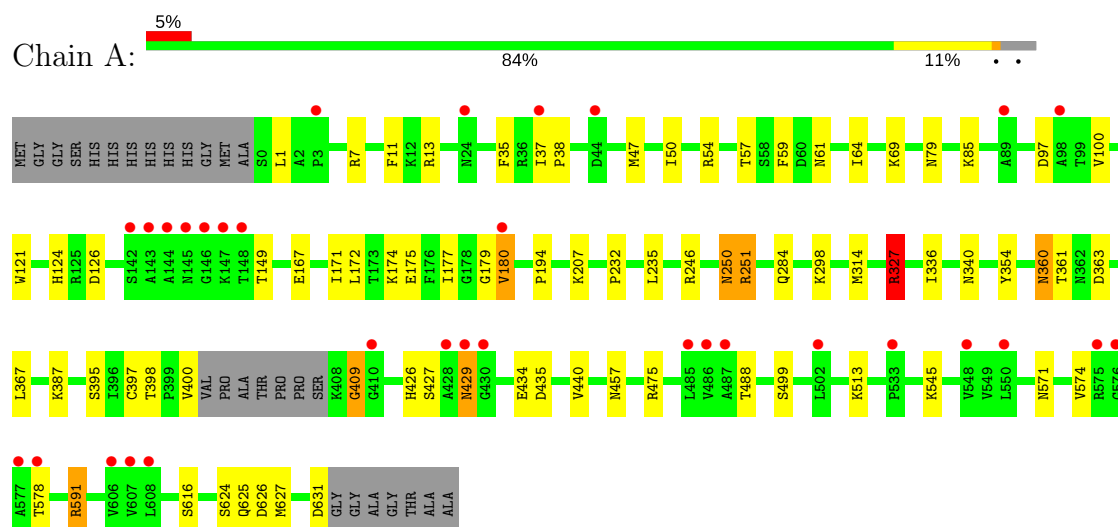
- Molecule 5 is water.

Mol	Chain	Residues	Atoms		ZeroOcc	AltConf
5	A	388	Total	O	0	0
			388	388		

3 Residue-property plots [i](#)

These plots are drawn for all protein, RNA and DNA chains in the entry. The first graphic for a chain summarises the proportions of the various outlier classes displayed in the second graphic. The second graphic shows the sequence view annotated by issues in geometry and electron density. Residues are color-coded according to the number of geometric quality criteria for which they contain at least one outlier: green = 0, yellow = 1, orange = 2 and red = 3 or more. A red dot above a residue indicates a poor fit to the electron density ($RSRZ > 2$). Stretches of 2 or more consecutive residues without any outlier are shown as a green connector. Residues present in the sample, but not in the model, are shown in grey.

- Molecule 1: sialidase



4 Data and refinement statistics

Property	Value	Source
Space group	P 21 21 21	Depositor
Cell constants a, b, c, α , β , γ	74.87Å 95.01Å 110.75Å 90.00° 90.00° 90.00°	Depositor
Resolution (Å)	29.50 – 2.20 29.48 – 2.20	Depositor EDS
% Data completeness (in resolution range)	88.8 (29.50-2.20) 88.8 (29.48-2.20)	Depositor EDS
R_{merge}	0.07	Depositor
R_{sym}	0.07	Depositor
$\langle I/\sigma(I) \rangle$ ¹	2.52 (at 2.20Å)	Xtriage
Refinement program	REFMAC 5.2.0005	Depositor
R, R_{free}	0.160 , 0.232 0.174 , 0.235	Depositor DCC
R_{free} test set	1817 reflections (5.29%)	DCC
Wilson B-factor (Å ²)	28.3	Xtriage
Anisotropy	0.057	Xtriage
Bulk solvent k_{sol} (e/Å ³), B_{sol} (Å ²)	0.33 , 42.9	EDS
L-test for twinning ²	$\langle L \rangle = 0.49$, $\langle L^2 \rangle = 0.32$	Xtriage
Estimated twinning fraction	No twinning to report.	Xtriage
F_o, F_c correlation	0.96	EDS
Total number of atoms	5295	wwPDB-VP
Average B, all atoms (Å ²)	31.0	wwPDB-VP

Xtriage's analysis on translational NCS is as follows: *The largest off-origin peak in the Patterson function is 4.94% of the height of the origin peak. No significant pseudotranslation is detected.*

¹Intensities estimated from amplitudes.

²Theoretical values of $\langle |L| \rangle$, $\langle L^2 \rangle$ for acentric reflections are 0.5, 0.333 respectively for untwinned datasets, and 0.375, 0.2 for perfectly twinned datasets.

5 Model quality

5.1 Standard geometry

Bond lengths and bond angles in the following residue types are not validated in this section: GOL, SO4, FSI

The Z score for a bond length (or angle) is the number of standard deviations the observed value is removed from the expected value. A bond length (or angle) with $|Z| > 5$ is considered an outlier worth inspection. RMSZ is the root-mean-square of all Z scores of the bond lengths (or angles).

Mol	Chain	Bond lengths		Bond angles	
		RMSZ	$\# Z > 5$	RMSZ	$\# Z > 5$
1	A	1.03	0/4976	0.96	8/6757 (0.1%)

Chiral center outliers are detected by calculating the chiral volume of a chiral center and verifying if the center is modelled as a planar moiety or with the opposite hand. A planarity outlier is detected by checking planarity of atoms in a peptide group, atoms in a mainchain group or atoms of a sidechain that are expected to be planar.

Mol	Chain	#Chirality outliers	#Planarity outliers
1	A	0	1

There are no bond length outliers.

All (8) bond angle outliers are listed below:

Mol	Chain	Res	Type	Atoms	Z	Observed(°)	Ideal(°)
1	A	251	ARG	NE-CZ-NH2	-9.48	115.56	120.30
1	A	251	ARG	NE-CZ-NH1	8.98	124.79	120.30
1	A	591	ARG	NE-CZ-NH1	6.42	123.51	120.30
1	A	13	ARG	NE-CZ-NH1	6.18	123.39	120.30
1	A	475	ARG	NE-CZ-NH1	-5.61	117.50	120.30
1	A	327	ARG	NE-CZ-NH2	-5.39	117.61	120.30
1	A	126	ASP	CB-CG-OD1	5.24	123.01	118.30
1	A	251	ARG	CG-CD-NE	-5.14	101.01	111.80

There are no chirality outliers.

All (1) planarity outliers are listed below:

Mol	Chain	Res	Type	Group
1	A	409	GLY	Peptide

5.2 Too-close contacts ⓘ

In the following table, the Non-H and H(model) columns list the number of non-hydrogen atoms and hydrogen atoms in the chain respectively. The H(added) column lists the number of hydrogen atoms added and optimized by MolProbity. The Clashes column lists the number of clashes within the asymmetric unit, whereas Symm-Clashes lists symmetry related clashes.

Mol	Chain	Non-H	H(model)	H(added)	Clashes	Symm-Clashes
1	A	4870	0	4789	54	0
2	A	10	0	0	0	0
3	A	21	0	16	0	0
4	A	6	0	8	2	0
5	A	388	0	0	9	0
All	All	5295	0	4813	54	0

The all-atom clashscore is defined as the number of clashes found per 1000 atoms (including hydrogen atoms). The all-atom clashscore for this structure is 6.

All (54) close contacts within the same asymmetric unit are listed below, sorted by their clash magnitude.

Atom-1	Atom-2	Interatomic distance (Å)	Clash overlap (Å)
1:A:59[B]:PHE:CE1	1:A:61[B]:ASN:HB2	1.66	1.29
1:A:250:ASN:HD22	1:A:251:ARG:H	1.14	0.95
1:A:571:ASN:HB2	5:A:1210:HOH:O	1.69	0.91
1:A:59[B]:PHE:CE1	1:A:61[B]:ASN:CB	2.55	0.89
1:A:59[B]:PHE:CZ	1:A:61[B]:ASN:HB2	2.20	0.74
1:A:246:ARG:HH22	1:A:284[B]:GLN:HE21	1.33	0.73
1:A:427:SER:OG	1:A:434:GLU:OE2	2.11	0.67
1:A:250:ASN:ND2	1:A:251:ARG:H	1.92	0.65
1:A:427:SER:OG	1:A:434:GLU:CD	2.35	0.65
1:A:360:ASN:HD21	1:A:363:ASP:H	1.45	0.64
1:A:250:ASN:HD22	1:A:251:ARG:N	1.91	0.63
1:A:298:LYS:NZ	4:A:903:GOL:O1	2.30	0.60
1:A:360:ASN:HD22	1:A:361:THR:N	2.00	0.60
1:A:429:ASN:HD22	1:A:429:ASN:C	2.04	0.59
1:A:360:ASN:C	1:A:360:ASN:HD22	2.05	0.58
1:A:397:CYS:HA	5:A:936:HOH:O	2.04	0.56
1:A:571:ASN:N	5:A:1210:HOH:O	2.39	0.54
1:A:395:SER:HB2	5:A:1147:HOH:O	2.07	0.54
1:A:426:HIS:ND1	1:A:631:ASP:HB2	2.22	0.54
1:A:488:THR:HG23	1:A:625:GLN:NE2	2.24	0.53
1:A:360:ASN:C	1:A:360:ASN:ND2	2.62	0.53
1:A:429:ASN:C	1:A:429:ASN:ND2	2.64	0.52

Continued on next page...

Continued from previous page...

Atom-1	Atom-2	Interatomic distance (Å)	Clash overlap (Å)
1:A:207:LYS:NZ	5:A:1096:HOH:O	2.43	0.51
1:A:327:ARG:HD2	1:A:327:ARG:H	1.75	0.50
1:A:571:ASN:CB	5:A:1210:HOH:O	2.41	0.50
1:A:47:MET:HE1	1:A:354:TYR:CE1	2.48	0.48
1:A:398:THR:HA	1:A:627:MET:HE1	1.95	0.48
1:A:37:ILE:HG21	1:A:97:ASP:HA	1.94	0.48
1:A:624:SER:CB	1:A:627:MET:HE3	2.44	0.47
1:A:167[A]:GLU:HA	1:A:171:ILE:O	2.14	0.47
1:A:54:ARG:HG2	1:A:64:ILE:HG12	1.96	0.47
1:A:314:MET:CE	1:A:340:ASN:HD21	2.29	0.46
1:A:246:ARG:NH2	1:A:284[B]:GLN:HE21	2.07	0.45
1:A:11:PHE:HB3	1:A:35:PHE:CG	2.51	0.45
1:A:387:LYS:NZ	5:A:1258:HOH:O	2.48	0.45
1:A:59[B]:PHE:CD1	1:A:61[B]:ASN:O	2.69	0.45
1:A:327:ARG:HD2	1:A:327:ARG:N	2.32	0.45
1:A:121:TRP:HA	1:A:124:HIS:CE1	2.51	0.45
1:A:38:PRO:HB3	1:A:367:LEU:HD13	1.99	0.44
1:A:54:ARG:HB3	1:A:57:THR:O	2.18	0.44
1:A:7:ARG:CZ	1:A:336:ILE:HD12	2.48	0.44
1:A:298:LYS:NZ	4:A:903:GOL:C1	2.81	0.43
1:A:167[B]:GLU:HA	1:A:171:ILE:O	2.19	0.43
1:A:457:ASN:OD1	1:A:457:ASN:C	2.57	0.42
1:A:400:VAL:HG22	5:A:1092:HOH:O	2.19	0.42
1:A:545:LYS:HB3	5:A:1284:HOH:O	2.19	0.42
1:A:194:PRO:HB2	1:A:232:PRO:HG2	2.02	0.42
1:A:179:GLY:O	1:A:180:VAL:HB	2.19	0.42
1:A:50:ILE:HD13	1:A:100:VAL:HG21	2.02	0.42
1:A:69:LYS:HA	1:A:79:ASN:O	2.20	0.41
1:A:435:ASP:HB2	1:A:440:VAL:O	2.21	0.41
1:A:235:LEU:HD12	1:A:235:LEU:C	2.42	0.40
1:A:174:LYS:HG2	1:A:175:GLU:HG3	2.02	0.40
1:A:426:HIS:CG	1:A:631:ASP:HB2	2.57	0.40

There are no symmetry-related clashes.

5.3 Torsion angles ⓘ

5.3.1 Protein backbone ⓘ

In the following table, the Percentiles column shows the percent Ramachandran outliers of the chain as a percentile score with respect to all X-ray entries followed by that with respect to entries

of similar resolution.

The Analysed column shows the number of residues for which the backbone conformation was analysed, and the total number of residues.

Mol	Chain	Analysed	Favoured	Allowed	Outliers	Percentiles
1	A	626/652 (96%)	587 (94%)	36 (6%)	3 (0%)	32 34

All (3) Ramachandran outliers are listed below:

Mol	Chain	Res	Type
1	A	180	VAL
1	A	409	GLY
1	A	1	LEU

5.3.2 Protein sidechains ⓘ

In the following table, the Percentiles column shows the percent sidechain outliers of the chain as a percentile score with respect to all X-ray entries followed by that with respect to entries of similar resolution.

The Analysed column shows the number of residues for which the sidechain conformation was analysed, and the total number of residues.

Mol	Chain	Analysed	Rotameric	Outliers	Percentiles
1	A	525/540 (97%)	510 (97%)	15 (3%)	48 60

All (15) residues with a non-rotameric sidechain are listed below:

Mol	Chain	Res	Type
1	A	85	LYS
1	A	149	THR
1	A	172	LEU
1	A	177	ILE
1	A	250	ASN
1	A	327	ARG
1	A	360	ASN
1	A	429	ASN
1	A	499	SER
1	A	513	LYS
1	A	574	VAL
1	A	578	THR
1	A	591	ARG
1	A	616	SER

Continued on next page...

Continued from previous page...

Mol	Chain	Res	Type
1	A	626	ASP

Some sidechains can be flipped to improve hydrogen bonding and reduce clashes. All (6) such sidechains are listed below:

Mol	Chain	Res	Type
1	A	196	GLN
1	A	250	ASN
1	A	325	ASN
1	A	360	ASN
1	A	429	ASN
1	A	625	GLN

5.3.3 RNA [i](#)

There are no RNA molecules in this entry.

5.4 Non-standard residues in protein, DNA, RNA chains [i](#)

There are no non-standard protein/DNA/RNA residues in this entry.

5.5 Carbohydrates [i](#)

There are no carbohydrates in this entry.

5.6 Ligand geometry [i](#)

4 ligands are modelled in this entry.

In the following table, the Counts columns list the number of bonds (or angles) for which Mogul statistics could be retrieved, the number of bonds (or angles) that are observed in the model and the number of bonds (or angles) that are defined in the chemical component dictionary. The Link column lists molecule types, if any, to which the group is linked. The Z score for a bond length (or angle) is the number of standard deviations the observed value is removed from the expected value. A bond length (or angle) with $|Z| > 2$ is considered an outlier worth inspection. RMSZ is the root-mean-square of all Z scores of the bond lengths (or angles).

Mol	Type	Chain	Res	Link	Bond lengths			Bond angles		
					Counts	RMSZ	$\# Z > 2$	Counts	RMSZ	$\# Z > 2$
3	FSI	A	700	1	18,21,22	2.10	3 (16%)	20,30,33	1.83	5 (25%)

Mol	Type	Chain	Res	Link	Bond lengths			Bond angles		
					Counts	RMSZ	# Z > 2	Counts	RMSZ	# Z > 2
2	SO4	A	801	-	4,4,4	0.27	0	6,6,6	0.49	0
2	SO4	A	802	-	4,4,4	0.18	0	6,6,6	0.62	0
4	GOL	A	903	-	5,5,5	0.57	0	5,5,5	1.14	0

In the following table, the Chirals column lists the number of chiral outliers, the number of chiral centers analysed, the number of these observed in the model and the number defined in the chemical component dictionary. Similar counts are reported in the Torsion and Rings columns. '-' means no outliers of that kind were identified.

Mol	Type	Chain	Res	Link	Chirals	Torsions	Rings
3	FSI	A	700	1	-	0/14/38/43	0/1/1/1
2	SO4	A	801	-	-	0/0/0/0	0/0/0/0
2	SO4	A	802	-	-	0/0/0/0	0/0/0/0
4	GOL	A	903	-	-	0/4/4/4	0/0/0/0

All (3) bond length outliers are listed below:

Mol	Chain	Res	Type	Atoms	Z	Observed(Å)	Ideal(Å)
3	A	700	FSI	C5-N5	-6.90	1.34	1.45
3	A	700	FSI	C3-C4	2.64	1.54	1.52
3	A	700	FSI	O6-C2	3.23	1.48	1.44

All (5) bond angle outliers are listed below:

Mol	Chain	Res	Type	Atoms	Z	Observed(°)	Ideal(°)
3	A	700	FSI	C4-C5-C6	-2.75	105.32	110.44
3	A	700	FSI	F1-C3-C4	2.50	110.32	108.49
3	A	700	FSI	C6-O6-C2	2.71	119.32	112.15
3	A	700	FSI	C6-C5-N5	3.31	116.82	111.00
3	A	700	FSI	C5-N5-C10	3.92	133.12	123.19

There are no chirality outliers.

There are no torsion outliers.

There are no ring outliers.

1 monomer is involved in 2 short contacts:

Mol	Chain	Res	Type	Clashes	Symm-Clashes
4	A	903	GOL	2	0

5.7 Other polymers [i](#)

There are no such residues in this entry.

5.8 Polymer linkage issues [i](#)

There are no chain breaks in this entry.

6 Fit of model and data ⓘ

6.1 Protein, DNA and RNA chains ⓘ

In the following table, the column labelled ‘#RSRZ> 2’ contains the number (and percentage) of RSRZ outliers, followed by percent RSRZ outliers for the chain as percentile scores relative to all X-ray entries and entries of similar resolution. The OWAB column contains the minimum, median, 95th percentile and maximum values of the occupancy-weighted average B-factor per residue. The column labelled ‘Q< 0.9’ lists the number of (and percentage) of residues with an average occupancy less than 0.9.

Mol	Chain	Analysed	<RSRZ>	#RSRZ>2		OWAB(Å ²)	Q<0.9
1	A	625/652 (95%)	-0.04	32 (5%)	29 27	21, 30, 46, 67	0

All (32) RSRZ outliers are listed below:

Mol	Chain	Res	Type	RSRZ
1	A	144	ALA	7.6
1	A	145	ASN	7.4
1	A	143	ALA	5.6
1	A	146	GLY	5.5
1	A	410	GLY	3.8
1	A	485	LEU	3.7
1	A	550	LEU	3.5
1	A	429	ASN	3.4
1	A	148	THR	3.4
1	A	577	ALA	3.3
1	A	147	LYS	3.2
1	A	486	VAL	3.2
1	A	180	VAL	2.8
1	A	487	ALA	2.8
1	A	576	GLY	2.8
1	A	548	VAL	2.8
1	A	24	ASN	2.8
1	A	575	ARG	2.8
1	A	608	LEU	2.6
1	A	3	PRO	2.5
1	A	98	ALA	2.5
1	A	502	LEU	2.5
1	A	606	VAL	2.5
1	A	533	PRO	2.4
1	A	142	SER	2.3
1	A	37	ILE	2.3
1	A	44	ASP	2.2

Continued on next page...

Continued from previous page...

Mol	Chain	Res	Type	RSRZ
1	A	430	GLY	2.2
1	A	428	ALA	2.2
1	A	89	ALA	2.1
1	A	578	THR	2.0
1	A	607	VAL	2.0

6.2 Non-standard residues in protein, DNA, RNA chains [i](#)

There are no non-standard protein/DNA/RNA residues in this entry.

6.3 Carbohydrates [i](#)

There are no carbohydrates in this entry.

6.4 Ligands [i](#)

In the following table, the Atoms column lists the number of modelled atoms in the group and the number defined in the chemical component dictionary. LLDF column lists the quality of electron density of the group with respect to its neighbouring residues in protein, DNA or RNA chains. The B-factors column lists the minimum, median, 95th percentile and maximum values of B factors of atoms in the group. The column labelled 'Q < 0.9' lists the number of atoms with occupancy less than 0.9.

Mol	Type	Chain	Res	Atoms	RSCC	RSR	LLDF	B-factors(Å ²)	Q<0.9
4	GOL	A	903	6/6	0.79	0.18	4.08	54,60,61,63	0
2	SO4	A	801	5/5	0.97	0.22	1.55	56,58,61,64	0
3	FSI	A	700	21/22	0.95	0.09	-1.23	26,31,34,35	0
2	SO4	A	802	5/5	0.96	0.20	-	55,57,60,60	0

6.5 Other polymers [i](#)

There are no such residues in this entry.