



# Full wwPDB X-ray Structure Validation Report ⓘ

Feb 14, 2017 – 06:23 am GMT

PDB ID : 1FL6  
Title : THE HAPTEN COMPLEXED GERMLINE PRECURSOR TO SULFIDE  
OXIDASE CATALYTIC ANTIBODY 28B4  
Authors : Yin, J.; Mundorff, E.C.; Yang, P.L.; Wendt, K.U.; Hanway, D.; Stevens, R.C.;  
Schultz, P.G.  
Deposited on : 2000-08-11  
Resolution : 2.80 Å(reported)

This is a Full wwPDB X-ray Structure Validation Report for a publicly released PDB entry.

We welcome your comments at [validation@mail.wwpdb.org](mailto:validation@mail.wwpdb.org)

A user guide is available at

<http://wwpdb.org/validation/2016/XrayValidationReportHelp>

with specific help available everywhere you see the ⓘ symbol.

---

The following versions of software and data (see [references ⓘ](#)) were used in the production of this report:

MolProbity	:	4.02b-467
Mogul	:	1.7.2 (RC1), CSD as538be (2017)
Xtriage (Phenix)	:	1.9-1692
EDS	:	trunk28620
Percentile statistics	:	20161228.v01 (using entries in the PDB archive December 28th 2016)
Refmac	:	5.8.0135
CCP4	:	6.5.0
Ideal geometry (proteins)	:	Engh & Huber (2001)
Ideal geometry (DNA, RNA)	:	Parkinson et al. (1996)
Validation Pipeline (wwPDB-VP)	:	recalc28949

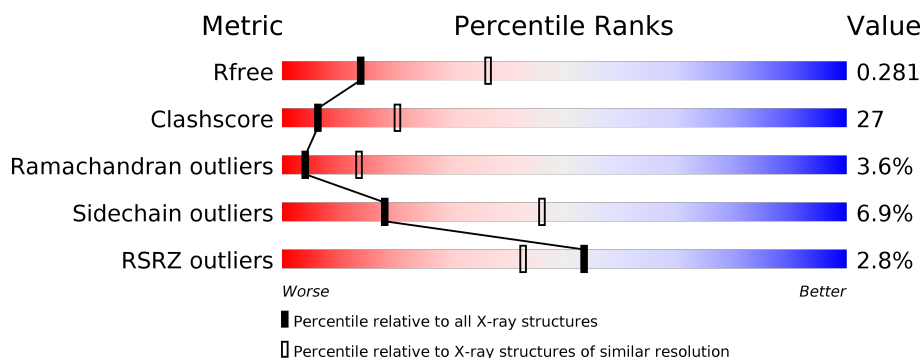
# 1 Overall quality at a glance

The following experimental techniques were used to determine the structure:

## *X-RAY DIFFRACTION*

The reported resolution of this entry is 2.80 Å.

Percentile scores (ranging between 0-100) for global validation metrics of the entry are shown in the following graphic. The table shows the number of entries on which the scores are based.



Metric	Whole archive (#Entries)	Similar resolution (#Entries, resolution range(Å))
$R_{free}$	100719	2583 (2.80-2.80)
Clashscore	112137	3033 (2.80-2.80)
Ramachandran outliers	110173	2983 (2.80-2.80)
Sidechain outliers	110143	2985 (2.80-2.80)
RSRZ outliers	101464	2610 (2.80-2.80)

The table below summarises the geometric issues observed across the polymeric chains and their fit to the electron density. The red, orange, yellow and green segments on the lower bar indicate the fraction of residues that contain outliers for  $\geq 3$ , 2, 1 and 0 types of geometric quality criteria. A grey segment represents the fraction of residues that are not modelled. The numeric value for each fraction is indicated below the corresponding segment, with a dot representing fractions  $\leq 5\%$ . The upper red bar (where present) indicates the fraction of residues that have poor fit to the electron density. The numeric value is given above the bar.

Mol	Chain	Length	Quality of chain
1	A	217	<div> <div>0%</div> <div> <div>47%</div> <div>47%</div> <div>6%</div> </div> </div>
1	L	217	<div> <div>2%</div> <div> <div>51%</div> <div>42%</div> <div>6%</div> </div> </div>
2	B	219	<div> <div>4%</div> <div> <div>61%</div> <div>35%</div> <div>5%</div> </div> </div>
2	H	219	<div> <div>4%</div> <div> <div>58%</div> <div>37%</div> <div>5%</div> </div> </div>

The following table lists non-polymeric compounds, carbohydrate monomers and non-standard residues in protein, DNA, RNA chains that are outliers for geometric or electron-density-fit crite-

ria:

Mol	Type	Chain	Res	Chirality	Geometry	Clashes	Electron density
3	AAH	B	824	-	-	-	X
3	AAH	H	824	-	-	-	X

## 2 Entry composition [i](#)

There are 3 unique types of molecules in this entry. The entry contains 6684 atoms, of which 0 are hydrogens and 0 are deuteriums.

In the tables below, the ZeroOcc column contains the number of atoms modelled with zero occupancy, the AltConf column contains the number of residues with at least one atom in alternate conformation and the Trace column contains the number of residues modelled with at most 2 atoms.

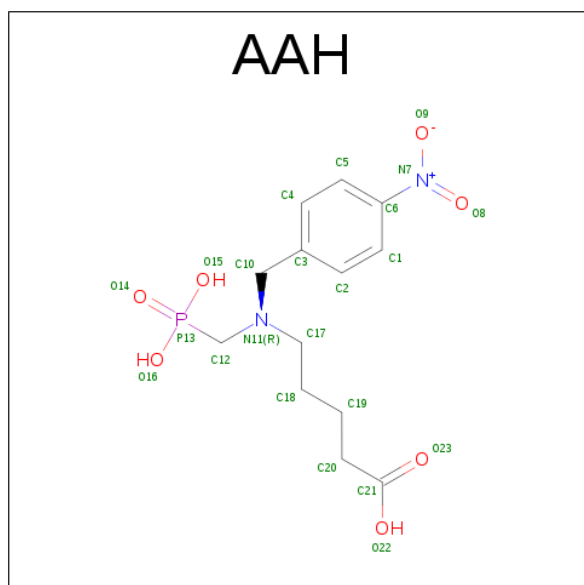
- Molecule 1 is a protein called ANTIBODY GERMLINE PRECURSOR TO 28B4.

Mol	Chain	Residues	Atoms					ZeroOcc	AltConf	Trace
1	L	217	Total	C	N	O	S	0	0	0
			1674	1050	285	334	5			
1	A	217	Total	C	N	O	S	0	0	0
			1674	1050	285	334	5			

- Molecule 2 is a protein called ANTIBODY GERMLINE PRECURSOR TO 28B4.

Mol	Chain	Residues	Atoms					ZeroOcc	AltConf	Trace
2	H	219	Total	C	N	O	S	0	0	0
			1645	1035	275	328	7			
2	B	219	Total	C	N	O	S	0	0	0
			1645	1035	275	328	7			

- Molecule 3 is 1-[N-4'-NITROBENZYL-N-4'-CARBOXYBUTYLAMINO]METHYLPHOSPHONIC ACID (three-letter code: AAH) (formula: C<sub>13</sub>H<sub>19</sub>N<sub>2</sub>O<sub>7</sub>P).

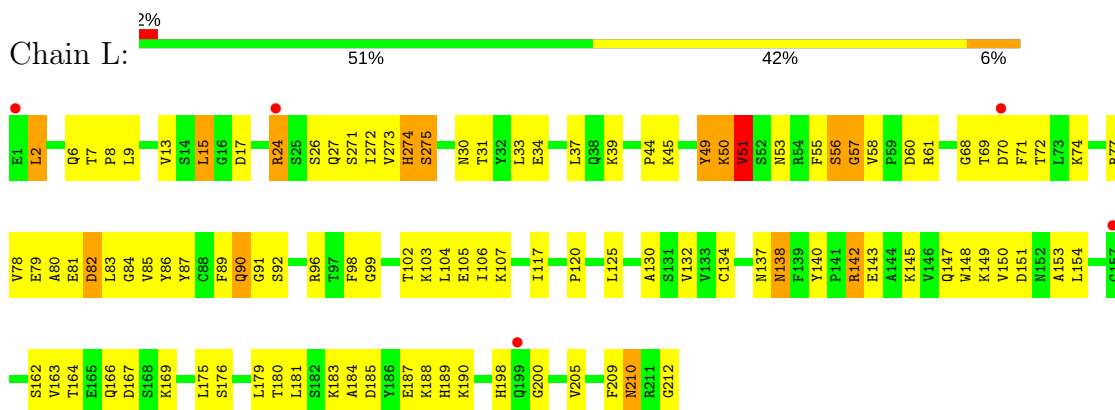


Mol	Chain	Residues	Atoms					ZeroOcc	AltConf
3	H	1	Total 23	C 13	N 2	O 7	P 1	0	0
3	B	1	Total 23	C 13	N 2	O 7	P 1	0	0

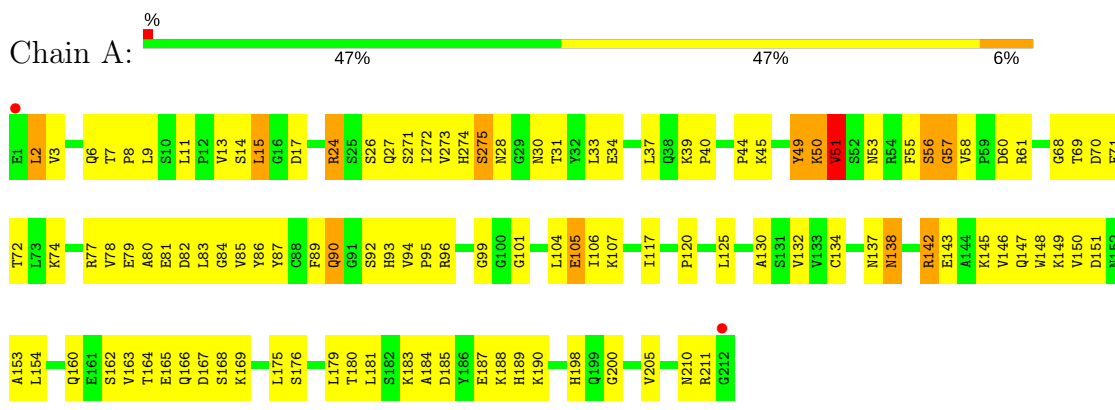
### 3 Residue-property plots [i](#)

These plots are drawn for all protein, RNA and DNA chains in the entry. The first graphic for a chain summarises the proportions of the various outlier classes displayed in the second graphic. The second graphic shows the sequence view annotated by issues in geometry and electron density. Residues are color-coded according to the number of geometric quality criteria for which they contain at least one outlier: green = 0, yellow = 1, orange = 2 and red = 3 or more. A red dot above a residue indicates a poor fit to the electron density ( $RSRZ > 2$ ). Stretches of 2 or more consecutive residues without any outlier are shown as a green connector. Residues present in the sample, but not in the model, are shown in grey.

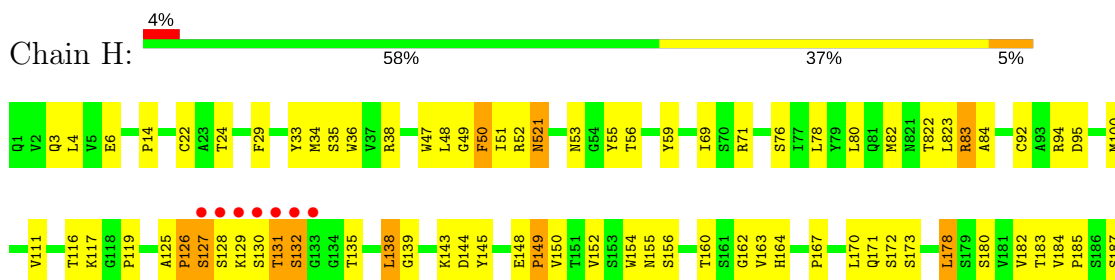
#### • Molecule 1: ANTIBODY GERMLINE PRECURSOR TO 28B4

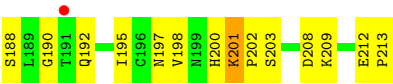


#### • Molecule 1: ANTIBODY GERMLINE PRECURSOR TO 28B4

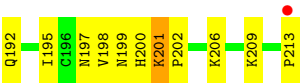
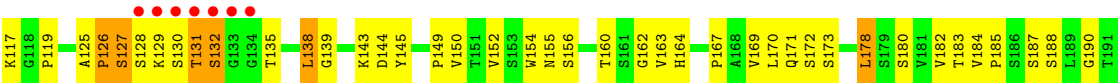


#### • Molecule 2: ANTIBODY GERMLINE PRECURSOR TO 28B4





● Molecule 2: ANTIBODY GERMLINE PRECURSOR TO 28B4



## 4 Data and refinement statistics

Property	Value	Source
Space group	P 1 21 1	Depositor
Cell constants a, b, c, $\alpha$ , $\beta$ , $\gamma$	54.46Å 127.61Å 65.59Å 90.00° 104.62° 90.00°	Depositor
Resolution (Å)	20.00 – 2.80 19.89 – 2.80	Depositor EDS
% Data completeness (in resolution range)	83.3 (20.00-2.80) 89.8 (19.89-2.80)	Depositor EDS
$R_{merge}$	0.10	Depositor
$R_{sym}$	(Not available)	Depositor
$\langle I/\sigma(I) \rangle$ <sup>1</sup>	2.88 (at 2.79Å)	Xtriage
Refinement program	CNS 0.4	Depositor
R, $R_{free}$	0.216 , 0.271 0.231 , 0.281	Depositor DCC
$R_{free}$ test set	1891 reflections (9.88%)	DCC
Wilson B-factor (Å <sup>2</sup> )	41.7	Xtriage
Anisotropy	0.257	Xtriage
Bulk solvent $k_{sol}$ (e/Å <sup>3</sup> ), $B_{sol}$ (Å <sup>2</sup> )	0.31 , 39.5	EDS
L-test for twinning <sup>2</sup>	$\langle  L  \rangle = 0.49$ , $\langle L^2 \rangle = 0.32$	Xtriage
Estimated twinning fraction	No twinning to report.	Xtriage
$F_o, F_c$ correlation	0.90	EDS
Total number of atoms	6684	wwPDB-VP
Average B, all atoms (Å <sup>2</sup> )	36.0	wwPDB-VP

Xtriage's analysis on translational NCS is as follows: *The largest off-origin peak in the Patterson function is 6.16% of the height of the origin peak. No significant pseudotranslation is detected.*

<sup>1</sup>Intensities estimated from amplitudes.

<sup>2</sup>Theoretical values of  $\langle |L| \rangle$ ,  $\langle L^2 \rangle$  for acentric reflections are 0.5, 0.333 respectively for untwinned datasets, and 0.375, 0.2 for perfectly twinned datasets.



## 5 Model quality [i](#)

### 5.1 Standard geometry [i](#)

Bond lengths and bond angles in the following residue types are not validated in this section: AAH

The Z score for a bond length (or angle) is the number of standard deviations the observed value is removed from the expected value. A bond length (or angle) with  $|Z| > 5$  is considered an outlier worth inspection. RMSZ is the root-mean-square of all Z scores of the bond lengths (or angles).

Mol	Chain	Bond lengths		Bond angles	
		RMSZ	$\# Z  > 5$	RMSZ	$\# Z  > 5$
1	A	0.35	0/1710	0.62	0/2316
1	L	0.36	0/1710	0.62	0/2316
2	B	0.40	0/1685	0.66	0/2294
2	H	0.38	0/1685	0.66	0/2294
All	All	0.37	0/6790	0.64	0/9220

There are no bond length outliers.

There are no bond angle outliers.

There are no chirality outliers.

There are no planarity outliers.

### 5.2 Too-close contacts [i](#)

In the following table, the Non-H and H(model) columns list the number of non-hydrogen atoms and hydrogen atoms in the chain respectively. The H(added) column lists the number of hydrogen atoms added and optimized by MolProbity. The Clashes column lists the number of clashes within the asymmetric unit, whereas Symm-Clashes lists symmetry related clashes.

Mol	Chain	Non-H	H(model)	H(added)	Clashes	Symm-Clashes
1	A	1674	0	1641	104	0
1	L	1674	0	1641	97	0
2	B	1645	0	1599	81	0
2	H	1645	0	1599	83	0
3	B	23	0	17	4	0
3	H	23	0	17	1	0
All	All	6684	0	6514	353	0

The all-atom clashscore is defined as the number of clashes found per 1000 atoms (including hydrogen atoms). The all-atom clashscore for this structure is 27.

All (353) close contacts within the same asymmetric unit are listed below, sorted by their clash magnitude.

Atom-1	Atom-2	Interatomic distance (Å)	Clash overlap (Å)
1:L:190:LYS:HE3	1:L:210:ASN:HB3	1.48	0.95
2:B:521:ASN:HD21	2:B:53:ASN:HD22	0.98	0.92
2:H:521:ASN:HD21	2:H:53:ASN:HD22	1.00	0.91
2:H:156:SER:H	2:H:197:ASN:HD21	1.17	0.90
2:B:156:SER:H	2:B:197:ASN:HD21	1.19	0.88
2:B:200:HIS:O	2:B:201:LYS:HB2	1.71	0.86
2:B:521:ASN:ND2	2:B:53:ASN:HD22	1.75	0.84
2:H:143:LYS:NZ	2:H:171:GLN:HE22	1.77	0.83
1:A:80:ALA:HA	1:A:106:ILE:HD13	1.58	0.82
2:B:143:LYS:NZ	2:B:171:GLN:HE22	1.77	0.82
1:L:6:GLN:HE21	1:L:99:GLY:HA3	1.44	0.82
1:A:190:LYS:HE3	1:A:210:ASN:HB3	1.62	0.81
2:B:126:PRO:HG3	2:B:138:LEU:HB3	1.63	0.80
2:H:126:PRO:HG3	2:H:138:LEU:HB3	1.63	0.80
1:A:273:VAL:HA	1:A:31:THR:HG22	1.64	0.77
2:H:521:ASN:HD21	2:H:53:ASN:ND2	1.81	0.76
2:B:119:PRO:HB3	2:B:145:TYR:HB3	1.68	0.76
2:H:119:PRO:HB3	2:H:145:TYR:HB3	1.66	0.76
1:L:273:VAL:HA	1:L:31:THR:HG22	1.67	0.75
2:B:155:ASN:HD21	2:B:195:ILE:H	1.35	0.74
2:H:156:SER:N	2:H:197:ASN:HD21	1.84	0.74
2:H:155:ASN:ND2	2:H:195:ILE:H	1.86	0.74
1:A:45:LYS:HA	1:A:45:LYS:HE2	1.70	0.74
2:B:156:SER:N	2:B:197:ASN:HD21	1.85	0.73
2:B:521:ASN:HD21	2:B:53:ASN:ND2	1.80	0.73
1:L:50:LYS:CB	1:L:53:ASN:HD22	2.01	0.73
2:H:155:ASN:HD21	2:H:195:ILE:H	1.36	0.73
1:L:198:HIS:CD2	1:L:200:GLY:H	2.07	0.73
2:B:155:ASN:ND2	2:B:195:ILE:H	1.86	0.72
2:H:47:TRP:CH2	2:H:49:GLY:HA2	2.25	0.72
1:A:96:ARG:HH21	3:B:824:AAH:H2	1.53	0.72
2:H:521:ASN:ND2	2:H:53:ASN:HD22	1.81	0.72
1:A:6:GLN:HE21	1:A:99:GLY:HA3	1.55	0.72
1:L:145:LYS:HE2	1:L:147:GLN:HG3	1.71	0.72
1:L:44:PRO:O	1:L:45:LYS:HE3	1.90	0.71
1:A:44:PRO:O	1:A:45:LYS:HE3	1.90	0.71
2:H:200:HIS:O	2:H:201:LYS:HB2	1.89	0.71
1:L:45:LYS:HA	1:L:45:LYS:HE2	1.70	0.71
1:A:145:LYS:HE2	1:A:147:GLN:HG3	1.73	0.71
1:A:50:LYS:CB	1:A:53:ASN:HD22	2.03	0.70

*Continued on next page...*

*Continued from previous page...*

Atom-1	Atom-2	Interatomic distance (Å)	Clash overlap (Å)
2:B:34:MET:HE2	2:B:94:ARG:HA	1.73	0.70
2:B:47:TRP:CH2	2:B:49:GLY:HA2	2.26	0.69
1:A:198:HIS:CD2	1:A:200:GLY:H	2.11	0.68
2:H:34:MET:HE2	2:H:94:ARG:HA	1.74	0.68
1:L:210:ASN:HD22	1:L:210:ASN:N	1.90	0.68
1:A:89:PHE:CZ	1:A:96:ARG:HB3	2.28	0.68
1:L:83:LEU:HD11	1:L:166:GLN:HG2	1.76	0.68
1:A:83:LEU:HD11	1:A:166:GLN:HG2	1.76	0.67
1:L:272:ILE:HD11	1:L:71:PHE:CZ	2.28	0.67
1:A:183:LYS:O	1:A:187:GLU:HG2	1.95	0.67
2:B:83:ARG:HH21	2:B:83:ARG:HG2	1.60	0.67
1:L:188:LYS:HE2	1:L:189:HIS:CE1	2.29	0.67
1:A:188:LYS:HE2	1:A:189:HIS:CE1	2.31	0.66
1:A:50:LYS:HB3	1:A:53:ASN:HD22	1.61	0.65
1:L:96:ARG:HH22	3:H:824:AAH:H121	1.62	0.64
1:L:183:LYS:O	1:L:187:GLU:HG2	1.98	0.64
2:H:4:LEU:HD23	2:H:24:THR:HG22	1.79	0.64
1:L:50:LYS:HB3	1:L:53:ASN:HD22	1.61	0.63
1:A:271:SER:HA	1:A:68:GLY:O	1.98	0.63
1:A:274:HIS:HB2	1:A:92:SER:HB3	1.79	0.63
2:B:38:ARG:HG2	2:B:48:LEU:HD21	1.81	0.63
1:L:61:ARG:HG2	1:L:77:ARG:NH2	2.13	0.63
1:A:61:ARG:HG2	1:A:77:ARG:NH2	2.15	0.62
2:H:47:TRP:CZ2	2:H:49:GLY:HA2	2.35	0.62
2:B:29:PHE:CD2	2:B:76:SER:HA	2.35	0.62
2:B:143:LYS:HZ3	2:B:171:GLN:HE22	1.47	0.61
1:L:138:ASN:HD21	2:H:164:HIS:CE1	2.18	0.61
1:A:9:LEU:HD13	1:A:9:LEU:O	2.00	0.61
1:A:80:ALA:HA	1:A:106:ILE:CD1	2.30	0.61
2:H:38:ARG:HG2	2:H:48:LEU:HD21	1.82	0.61
2:H:29:PHE:CD2	2:H:76:SER:HA	2.35	0.61
1:L:9:LEU:O	1:L:9:LEU:HD13	2.01	0.60
2:H:83:ARG:HG2	2:H:83:ARG:HH21	1.64	0.60
1:L:50:LYS:HB2	1:L:53:ASN:HD22	1.65	0.60
1:A:162:SER:OG	2:B:167:PRO:HD2	2.02	0.60
2:B:47:TRP:CZ2	2:B:49:GLY:HA2	2.36	0.60
2:B:4:LEU:HD23	2:B:24:THR:HG22	1.83	0.60
1:A:273:VAL:O	1:A:274:HIS:C	2.39	0.60
1:A:149:LYS:HA	1:A:153:ALA:O	2.02	0.60
1:L:149:LYS:HA	1:L:153:ALA:O	2.01	0.60
1:L:83:LEU:HD23	1:L:84:GLY:N	2.17	0.59

*Continued on next page...*

*Continued from previous page...*

Atom-1	Atom-2	Interatomic distance (Å)	Clash overlap (Å)
2:B:33:TYR:CE2	3:B:824:AAH:H121	2.37	0.59
2:B:34:MET:HB3	2:B:78:LEU:HD22	1.84	0.59
1:L:83:LEU:HD11	1:L:166:GLN:HB3	1.85	0.59
1:A:83:LEU:HD23	1:A:84:GLY:N	2.18	0.59
2:H:152:VAL:HG22	2:H:198:VAL:HG22	1.86	0.58
2:H:34:MET:HB3	2:H:78:LEU:HD22	1.86	0.58
2:B:116:THR:HG22	2:B:117:LYS:N	2.20	0.57
2:B:155:ASN:HD21	2:B:195:ILE:N	2.01	0.57
2:H:155:ASN:HD21	2:H:195:ILE:N	2.01	0.57
2:H:143:LYS:HZ3	2:H:171:GLN:HE22	1.51	0.57
1:A:2:LEU:HD22	1:A:90:GLN:HE21	1.70	0.57
1:A:50:LYS:HB2	1:A:53:ASN:HD22	1.68	0.57
2:B:162:GLY:O	2:B:182:VAL:HA	2.05	0.57
2:B:152:VAL:HG22	2:B:198:VAL:HG22	1.87	0.57
1:A:83:LEU:HD11	1:A:166:GLN:HB3	1.86	0.57
2:H:4:LEU:CD2	2:H:24:THR:HG22	2.34	0.57
1:L:185:ASP:OD1	1:L:188:LYS:HD3	2.03	0.57
2:H:200:HIS:O	2:H:201:LYS:CB	2.53	0.56
1:L:209:PHE:C	1:L:210:ASN:HD22	2.08	0.56
1:L:91:GLY:HA2	1:L:96:ARG:HH11	1.70	0.56
1:A:80:ALA:HB1	1:A:168:SER:O	2.05	0.56
2:B:4:LEU:CD2	2:B:24:THR:HG22	2.35	0.56
2:H:116:THR:HG22	2:H:117:LYS:N	2.19	0.56
2:H:22:CYS:HB3	2:H:78:LEU:HB3	1.86	0.56
1:A:94:VAL:HA	1:A:95:PRO:C	2.25	0.56
2:H:143:LYS:HZ2	2:H:171:GLN:HE22	1.51	0.56
1:A:211:ARG:HG2	1:A:211:ARG:HH11	1.70	0.56
1:A:185:ASP:OD1	1:A:188:LYS:HD3	2.05	0.56
1:A:271:SER:OG	1:A:273:VAL:HG23	2.05	0.56
2:B:59:TYR:HE1	2:B:69:ILE:HG13	1.68	0.56
2:H:3:GLN:O	2:H:24:THR:HA	2.05	0.56
2:B:116:THR:HG21	2:B:202:PRO:O	2.05	0.56
2:H:59:TYR:HE1	2:H:69:ILE:HG13	1.71	0.56
1:L:150:VAL:O	1:L:151:ASP:HB2	2.06	0.56
1:A:272:ILE:HD11	1:A:71:PHE:CZ	2.41	0.56
1:L:167:ASP:OD2	1:L:169:LYS:HB3	2.06	0.56
1:L:274:HIS:O	1:L:275:SER:C	2.45	0.56
2:H:160:THR:O	2:H:163:VAL:HG23	2.06	0.55
2:H:162:GLY:O	2:H:182:VAL:HA	2.06	0.55
2:H:50:PHE:C	2:H:50:PHE:CD1	2.80	0.55
2:H:116:THR:HG21	2:H:202:PRO:O	2.07	0.55

*Continued on next page...*

*Continued from previous page...*

Atom-1	Atom-2	Interatomic distance (Å)	Clash overlap (Å)
1:A:14:SER:HA	1:A:107:LYS:HG2	1.88	0.55
2:B:138:LEU:N	2:B:138:LEU:HD23	2.21	0.55
2:H:138:LEU:N	2:H:138:LEU:HD23	2.22	0.55
1:L:271:SER:HA	1:L:68:GLY:O	2.07	0.55
1:A:150:VAL:O	1:A:151:ASP:HB2	2.07	0.55
2:B:50:PHE:C	2:B:50:PHE:CD1	2.80	0.55
1:A:2:LEU:HA	1:A:26:SER:OG	2.07	0.54
2:B:51:ILE:HD13	2:B:71:ARG:HD2	1.89	0.54
1:A:90:GLN:HE22	1:A:93:HIS:HB2	1.72	0.54
1:L:2:LEU:HD22	1:L:90:GLN:HE21	1.72	0.54
2:B:22:CYS:HB3	2:B:78:LEU:HB3	1.90	0.54
1:L:91:GLY:CA	1:L:96:ARG:HH11	2.20	0.54
1:L:180:THR:O	1:L:181:LEU:HD23	2.07	0.54
1:A:167:ASP:OD2	1:A:169:LYS:HB3	2.07	0.54
1:L:2:LEU:HA	1:L:26:SER:OG	2.07	0.54
1:A:45:LYS:CE	1:A:45:LYS:HA	2.37	0.54
1:A:175:LEU:HD23	1:A:176:SER:N	2.23	0.53
2:B:3:GLN:O	2:B:24:THR:HA	2.08	0.53
2:B:200:HIS:O	2:B:201:LYS:CB	2.50	0.53
1:L:6:GLN:HE21	1:L:99:GLY:CA	2.19	0.53
1:L:142:ARG:HD3	1:L:163:VAL:HG11	1.91	0.53
1:L:89:PHE:CZ	1:L:96:ARG:HB3	2.44	0.53
1:L:50:LYS:O	1:L:51:VAL:HG13	2.09	0.53
1:L:96:ARG:HE	2:H:50:PHE:HE2	1.57	0.52
1:A:34:GLU:HG3	1:A:49:TYR:O	2.09	0.52
1:L:34:GLU:HG3	1:L:49:TYR:O	2.10	0.52
2:B:160:THR:O	2:B:163:VAL:HG23	2.10	0.52
1:L:24:ARG:HD2	1:L:69:THR:O	2.09	0.52
1:L:82:ASP:O	1:L:104:LEU:HD23	2.10	0.52
1:A:78:VAL:HG12	1:A:79:GLU:N	2.24	0.52
1:A:160:GLN:NE2	2:B:169:VAL:CG2	2.73	0.52
1:A:50:LYS:O	1:A:51:VAL:HG13	2.10	0.52
2:B:143:LYS:HZ2	2:B:171:GLN:HE22	1.54	0.51
1:A:6:GLN:HE22	1:A:87:TYR:HA	1.75	0.51
1:L:78:VAL:HG12	1:L:79:GLU:N	2.25	0.51
1:A:190:LYS:CE	1:A:210:ASN:HB3	2.37	0.51
2:H:178:LEU:C	2:H:178:LEU:HD12	2.31	0.51
1:L:83:LEU:HD11	1:L:166:GLN:CG	2.39	0.51
1:L:175:LEU:HD23	1:L:176:SER:N	2.26	0.51
1:A:11:LEU:HG	1:A:104:LEU:HD12	1.93	0.51
1:A:24:ARG:HD2	1:A:69:THR:O	2.11	0.51

*Continued on next page...*

*Continued from previous page...*

Atom-1	Atom-2	Interatomic distance (Å)	Clash overlap (Å)
2:H:36:TRP:CE2	2:H:80:LEU:HB2	2.46	0.51
2:B:178:LEU:C	2:B:178:LEU:HD12	2.32	0.51
1:L:210:ASN:N	1:L:210:ASN:ND2	2.59	0.50
1:L:24:ARG:HD3	1:L:70:ASP:HA	1.92	0.50
1:A:142:ARG:HD3	1:A:163:VAL:HG11	1.93	0.50
2:H:51:ILE:HG23	2:H:51:ILE:O	2.11	0.50
1:A:105:GLU:O	1:A:105:GLU:HG3	2.12	0.50
1:A:2:LEU:HD22	1:A:90:GLN:HG2	1.93	0.50
2:B:33:TYR:HB2	2:B:95:ASP:HB3	1.93	0.50
1:L:45:LYS:HA	1:L:45:LYS:CE	2.37	0.50
2:B:131:THR:HG22	2:B:132:SER:N	2.27	0.50
1:A:180:THR:O	1:A:181:LEU:HD23	2.12	0.50
1:A:24:ARG:HD3	1:A:70:ASP:HA	1.93	0.50
2:B:126:PRO:O	2:B:127:SER:C	2.50	0.50
1:L:49:TYR:CZ	1:L:53:ASN:HB3	2.47	0.50
1:A:274:HIS:O	1:A:275:SER:C	2.50	0.49
2:B:156:SER:H	2:B:197:ASN:ND2	2.00	0.49
1:L:162:SER:OG	2:H:167:PRO:HD2	2.11	0.49
1:A:138:ASN:HD21	2:B:164:HIS:CE1	2.31	0.49
2:B:36:TRP:CE2	2:B:80:LEU:HB2	2.47	0.49
2:H:126:PRO:O	2:H:127:SER:C	2.50	0.49
2:H:131:THR:HG22	2:H:132:SER:N	2.27	0.49
2:B:51:ILE:O	2:B:51:ILE:HG23	2.12	0.49
1:L:6:GLN:HE22	1:L:87:TYR:HA	1.78	0.49
2:H:52:ARG:HD2	2:H:56:THR:OG1	2.13	0.49
1:L:56:SER:OG	1:L:57:GLY:N	2.45	0.49
2:B:105:GLN:H	2:B:105:GLN:CD	2.16	0.49
1:L:33:LEU:HD13	1:L:33:LEU:C	2.33	0.49
1:A:33:LEU:C	1:A:33:LEU:HD13	2.33	0.49
1:L:2:LEU:HD22	1:L:90:GLN:HG2	1.95	0.49
2:B:188:SER:HB2	2:B:192:GLN:HG2	1.95	0.49
2:H:156:SER:H	2:H:197:ASN:ND2	1.98	0.49
2:H:84:ALA:HA	2:H:111:VAL:HB	1.93	0.49
2:H:33:TYR:HB2	2:H:95:ASP:HB3	1.95	0.49
1:A:49:TYR:CZ	1:A:53:ASN:HB3	2.48	0.48
1:A:142:ARG:NH1	1:A:163:VAL:HG21	2.28	0.48
2:H:83:ARG:NH2	2:H:83:ARG:HG2	2.28	0.48
1:L:50:LYS:HB2	1:L:53:ASN:ND2	2.28	0.48
1:A:83:LEU:HD11	1:A:166:GLN:CG	2.42	0.48
2:H:131:THR:O	2:H:132:SER:C	2.52	0.48
1:L:147:GLN:NE2	1:L:154:LEU:HD11	2.29	0.48

*Continued on next page...*

*Continued from previous page...*

Atom-1	Atom-2	Interatomic distance (Å)	Clash overlap (Å)
1:A:14:SER:OG	1:A:107:LYS:HD3	2.13	0.48
1:A:30:ASN:OD1	1:A:30:ASN:N	2.46	0.48
2:B:33:TYR:O	2:B:34:MET:HE2	2.12	0.48
1:L:107:LYS:HA	1:L:140:TYR:OH	2.14	0.48
1:A:96:ARG:HB2	2:B:47:TRP:CD2	2.48	0.48
1:L:13:VAL:O	1:L:107:LYS:HG2	2.13	0.48
1:L:96:ARG:HB2	2:H:47:TRP:CD2	2.48	0.48
2:B:83:ARG:HG2	2:B:83:ARG:NH2	2.25	0.48
2:B:90:TYR:O	2:B:106:GLY:HA2	2.13	0.48
2:H:51:ILE:HD13	2:H:71:ARG:HD2	1.95	0.48
1:L:30:ASN:N	1:L:30:ASN:OD1	2.46	0.48
2:B:143:LYS:HG2	2:B:144:ASP:CG	2.34	0.48
2:B:59:TYR:CE1	2:B:69:ILE:HG13	2.49	0.48
2:B:33:TYR:CE2	2:B:52:ARG:HG2	2.49	0.47
2:H:33:TYR:CE2	2:H:52:ARG:HG2	2.49	0.47
1:L:13:VAL:HG22	1:L:104:LEU:HD11	1.96	0.47
1:L:142:ARG:NH1	1:L:163:VAL:HG21	2.29	0.47
2:B:131:THR:O	2:B:132:SER:C	2.51	0.47
1:L:117:ILE:O	1:L:117:ILE:HG23	2.13	0.47
2:H:52:ARG:O	2:H:55:TYR:HA	2.14	0.47
2:H:188:SER:HB2	2:H:192:GLN:HG2	1.95	0.47
1:A:83:LEU:HD11	1:A:166:GLN:CB	2.45	0.47
2:B:171:GLN:O	2:B:173:SER:N	2.48	0.47
2:H:200:HIS:CE1	2:H:202:PRO:HG2	2.50	0.47
1:L:274:HIS:HB2	1:L:92:SER:HB3	1.97	0.47
2:B:139:GLY:HA2	2:B:154:TRP:CH2	2.50	0.46
1:A:163:VAL:HG12	1:A:164:THR:O	2.15	0.46
2:H:143:LYS:HG2	2:H:144:ASP:CG	2.35	0.46
1:L:83:LEU:HD11	1:L:166:GLN:CB	2.46	0.46
1:L:272:ILE:HD11	1:L:71:PHE:CE1	2.51	0.46
2:B:521:ASN:C	2:B:521:ASN:HD22	2.18	0.46
1:L:55:PHE:CG	1:L:56:SER:N	2.83	0.46
1:L:55:PHE:O	1:L:56:SER:O	2.34	0.46
1:A:147:GLN:NE2	1:A:154:LEU:HD11	2.30	0.46
1:L:273:VAL:HG22	1:L:31:THR:CG2	2.46	0.46
1:L:103:LYS:CG	1:L:104:LEU:N	2.78	0.46
1:A:55:PHE:CG	1:A:56:SER:N	2.84	0.46
1:L:80:ALA:HA	1:L:106:ILE:CD1	2.46	0.46
1:L:90:GLN:HG3	1:L:90:GLN:O	2.16	0.45
2:H:139:GLY:HA2	2:H:154:TRP:CH2	2.51	0.45
2:H:59:TYR:CE1	2:H:69:ILE:HG13	2.50	0.45

*Continued on next page...*



*Continued from previous page...*

Atom-1	Atom-2	Interatomic distance (Å)	Clash overlap (Å)
1:L:83:LEU:CD1	1:L:166:GLN:HG2	2.45	0.45
1:A:175:LEU:HD23	1:A:175:LEU:C	2.37	0.45
1:A:37:LEU:HD13	1:A:86:TYR:CE2	2.51	0.45
1:L:79:GLU:O	1:L:106:ILE:HD11	2.15	0.45
1:A:40:PRO:HB3	1:A:165:GLU:OE1	2.16	0.45
1:A:125:LEU:O	1:A:183:LYS:HD2	2.16	0.45
1:A:55:PHE:O	1:A:56:SER:O	2.34	0.45
1:A:56:SER:OG	1:A:57:GLY:N	2.49	0.45
2:B:116:THR:CG2	2:B:117:LYS:N	2.80	0.45
2:B:125:ALA:HA	2:B:126:PRO:HD3	1.86	0.45
2:B:129:LYS:O	2:B:131:THR:N	2.50	0.45
2:B:199:ASN:OD1	2:B:206:LYS:HG3	2.16	0.45
1:L:39:LYS:NZ	1:L:81:GLU:HG3	2.31	0.45
1:A:15:LEU:HD21	1:A:80:ALA:N	2.31	0.45
2:H:188:SER:C	2:H:190:GLY:H	2.20	0.45
1:A:30:ASN:HB2	1:A:31:THR:H	1.63	0.45
1:A:72:THR:HG22	1:A:74:LYS:HG3	1.99	0.45
1:A:96:ARG:NH2	3:B:824:AAH:H122	2.32	0.45
2:B:52:ARG:O	2:B:55:TYR:HA	2.17	0.45
2:H:129:LYS:O	2:H:131:THR:N	2.50	0.45
2:H:171:GLN:O	2:H:173:SER:N	2.50	0.45
1:L:134:CYS:HB2	1:L:148:TRP:CH2	2.52	0.45
2:B:125:ALA:O	2:B:127:SER:N	2.50	0.45
2:B:52:ARG:HD2	2:B:56:THR:OG1	2.17	0.45
1:A:117:ILE:O	1:A:117:ILE:HG23	2.16	0.44
1:A:275:SER:HG	1:A:28:ASN:H	1.65	0.44
1:A:39:LYS:NZ	1:A:81:GLU:HG3	2.31	0.44
1:A:50:LYS:HB2	1:A:53:ASN:ND2	2.31	0.44
2:B:192:GLN:OE1	2:B:192:GLN:HA	2.18	0.44
2:H:116:THR:CG2	2:H:117:LYS:N	2.80	0.44
2:H:192:GLN:HA	2:H:192:GLN:OE1	2.18	0.44
1:L:188:LYS:HE2	1:L:189:HIS:NE2	2.31	0.44
1:A:90:GLN:O	1:A:90:GLN:HG3	2.18	0.44
1:L:15:LEU:HD21	1:L:80:ALA:N	2.33	0.44
1:L:37:LEU:HD13	1:L:86:TYR:CE2	2.52	0.44
2:H:83:ARG:O	2:H:111:VAL:HG21	2.18	0.44
1:L:163:VAL:HG12	1:L:164:THR:O	2.18	0.44
1:L:91:GLY:C	1:L:96:ARG:NH1	2.71	0.44
1:L:2:LEU:HD12	1:L:27:GLN:HG2	2.00	0.43
1:L:72:THR:HG22	1:L:74:LYS:HG3	1.99	0.43
2:H:116:THR:CG2	2:H:203:SER:HB3	2.48	0.43

*Continued on next page...*



*Continued from previous page...*

Atom-1	Atom-2	Interatomic distance (Å)	Clash overlap (Å)
1:A:160:GLN:HE21	2:B:169:VAL:CG2	2.31	0.43
1:A:56:SER:O	1:A:58:VAL:N	2.49	0.43
1:L:8:PRO:O	1:L:102:THR:HG23	2.19	0.43
1:A:2:LEU:HD12	1:A:27:GLN:HG2	2.00	0.43
1:A:134:CYS:HB2	1:A:148:TRP:CH2	2.53	0.43
2:H:94:ARG:O	2:H:100:MET:HA	2.19	0.43
2:B:184:VAL:HB	2:B:185:PRO:CD	2.49	0.43
2:B:188:SER:C	2:B:190:GLY:H	2.20	0.43
2:H:33:TYR:O	2:H:34:MET:HE2	2.19	0.43
2:H:82:MET:HE2	2:H:823:LEU:HD21	1.99	0.43
1:L:189:HIS:O	1:L:212:GLY:O	2.37	0.43
1:L:56:SER:O	1:L:58:VAL:N	2.47	0.43
2:H:125:ALA:O	2:H:127:SER:N	2.52	0.43
2:H:50:PHE:C	2:H:50:PHE:HD1	2.21	0.43
1:A:273:VAL:HG12	1:A:273:VAL:O	2.19	0.42
1:A:13:VAL:CG2	1:A:104:LEU:HD11	2.48	0.42
1:A:37:LEU:HD12	1:A:85:VAL:O	2.18	0.42
1:L:125:LEU:O	1:L:183:LYS:HD2	2.18	0.42
1:A:188:LYS:HE2	1:A:189:HIS:NE2	2.34	0.42
2:B:50:PHE:C	2:B:50:PHE:HD1	2.22	0.42
1:L:96:ARG:NE	2:H:50:PHE:HE2	2.17	0.42
1:L:30:ASN:HD21	1:L:50:LYS:HD2	1.84	0.42
1:A:83:LEU:CD1	1:A:166:GLN:HG2	2.46	0.42
1:A:30:ASN:HD21	1:A:50:LYS:HD2	1.83	0.42
1:A:7:THR:HG23	1:A:8:PRO:HA	2.01	0.42
2:B:126:PRO:HD2	2:B:213:PRO:HA	2.02	0.42
1:A:145:LYS:HG2	1:A:146:VAL:N	2.34	0.42
1:A:160:GLN:HE21	2:B:169:VAL:HG21	1.85	0.42
2:H:6:GLU:HA	2:H:22:CYS:HA	2.01	0.42
1:A:78:VAL:CG1	1:A:79:GLU:N	2.82	0.42
2:B:171:GLN:C	2:B:173:SER:H	2.22	0.42
2:H:197:ASN:OD1	2:H:208:ASP:OD2	2.38	0.42
1:L:78:VAL:CG1	1:L:79:GLU:N	2.82	0.42
1:A:272:ILE:HD11	1:A:71:PHE:CE1	2.55	0.42
2:H:171:GLN:C	2:H:173:SER:H	2.23	0.42
1:A:132:VAL:HB	1:A:179:LEU:HB3	2.02	0.42
2:H:160:THR:C	2:H:163:VAL:HG23	2.40	0.42
2:H:822:THR:O	2:H:822:THR:HG22	2.20	0.42
1:L:175:LEU:HD23	1:L:175:LEU:C	2.40	0.42
1:A:6:GLN:NE2	1:A:101:GLY:H	2.18	0.41
1:L:37:LEU:HD12	1:L:85:VAL:O	2.20	0.41

*Continued on next page...*

*Continued from previous page...*

Atom-1	Atom-2	Interatomic distance (Å)	Clash overlap (Å)
2:B:6:GLU:HA	2:B:22:CYS:HA	2.02	0.41
2:H:148:GLU:HB3	2:H:149:PRO:HA	2.02	0.41
2:H:139:GLY:HA3	2:H:180:SER:O	2.20	0.41
1:L:132:VAL:HB	1:L:179:LEU:HB3	2.01	0.41
1:L:50:LYS:CB	1:L:53:ASN:ND2	2.77	0.41
1:A:37:LEU:HD13	1:A:86:TYR:CZ	2.55	0.41
2:B:139:GLY:HA3	2:B:180:SER:O	2.20	0.41
2:B:33:TYR:HE2	3:B:824:AAH:H121	1.83	0.41
1:L:7:THR:HG23	1:L:8:PRO:HA	2.01	0.41
1:A:86:TYR:O	1:A:101:GLY:HA2	2.21	0.41
1:A:3:VAL:H	1:A:26:SER:HB3	1.85	0.41
2:H:184:VAL:HB	2:H:185:PRO:CD	2.50	0.41
1:A:160:GLN:NE2	2:B:169:VAL:HG23	2.35	0.41
2:H:125:ALA:HA	2:H:126:PRO:HD3	1.85	0.41
1:A:120:PRO:HG3	1:A:130:ALA:HB1	2.03	0.41
1:L:80:ALA:HA	1:L:106:ILE:HD12	2.01	0.41
2:B:94:ARG:O	2:B:100:MET:HA	2.20	0.41
2:H:212:GLU:HA	2:H:213:PRO:HD3	1.95	0.41
2:B:145:TYR:CE2	2:B:150:VAL:HG13	2.56	0.41
2:H:35:SER:O	2:H:92:CYS:HA	2.21	0.41
1:L:145:LYS:HE2	1:L:147:GLN:CG	2.47	0.41
2:H:14:PRO:HG3	2:H:111:VAL:HG12	2.02	0.40
1:A:211:ARG:HG2	1:A:211:ARG:NH1	2.35	0.40
2:B:160:THR:C	2:B:163:VAL:HG23	2.42	0.40
2:H:145:TYR:CE2	2:H:150:VAL:HG13	2.57	0.40
1:L:120:PRO:HG3	1:L:130:ALA:HB1	2.04	0.40

There are no symmetry-related clashes.

## 5.3 Torsion angles [i](#)

### 5.3.1 Protein backbone [i](#)

In the following table, the Percentiles column shows the percent Ramachandran outliers of the chain as a percentile score with respect to all X-ray entries followed by that with respect to entries of similar resolution.

The Analysed column shows the number of residues for which the backbone conformation was analysed, and the total number of residues.

Mol	Chain	Analysed	Favoured	Allowed	Outliers	Percentiles	
1	A	215/217 (99%)	184 (86%)	24 (11%)	7 (3%)	4	15
1	L	215/217 (99%)	185 (86%)	22 (10%)	8 (4%)	4	13
2	B	217/219 (99%)	183 (84%)	26 (12%)	8 (4%)	4	13
2	H	217/219 (99%)	181 (83%)	28 (13%)	8 (4%)	4	13
All	All	864/872 (99%)	733 (85%)	100 (12%)	31 (4%)	4	13

All (31) Ramachandran outliers are listed below:

Mol	Chain	Res	Type
1	L	275	SER
1	L	56	SER
2	H	131	THR
2	H	201	LYS
1	A	275	SER
1	A	56	SER
2	B	131	THR
2	B	201	LYS
1	L	51	VAL
2	H	128	SER
2	H	130	SER
2	H	132	SER
1	A	51	VAL
2	B	128	SER
2	B	130	SER
2	B	132	SER
1	L	274	HIS
1	L	57	GLY
1	L	138	ASN
2	H	127	SER
2	H	172	SER
1	A	57	GLY
2	B	127	SER
2	B	172	SER
1	L	184	ALA
1	A	138	ASN
1	L	82	ASP
1	A	82	ASP
1	A	184	ALA
2	H	126	PRO
2	B	126	PRO

### 5.3.2 Protein sidechains ⓘ

In the following table, the Percentiles column shows the percent sidechain outliers of the chain as a percentile score with respect to all X-ray entries followed by that with respect to entries of similar resolution.

The Analysed column shows the number of residues for which the sidechain conformation was analysed, and the total number of residues.

Mol	Chain	Analysed	Rotameric	Outliers	Percentiles	
1	A	192/192 (100%)	178 (93%)	14 (7%)	16	42
1	L	192/192 (100%)	176 (92%)	16 (8%)	13	36
2	B	184/184 (100%)	173 (94%)	11 (6%)	22	54
2	H	184/184 (100%)	173 (94%)	11 (6%)	22	54
All	All	752/752 (100%)	700 (93%)	52 (7%)	18	46

All (52) residues with a non-rotameric sidechain are listed below:

Mol	Chain	Res	Type
1	L	2	LEU
1	L	15	LEU
1	L	17	ASP
1	L	24	ARG
1	L	49	TYR
1	L	50	LYS
1	L	51	VAL
1	L	60	ASP
1	L	90	GLN
1	L	98	PHE
1	L	105	GLU
1	L	137	ASN
1	L	142	ARG
1	L	143	GLU
1	L	205	VAL
1	L	210	ASN
2	H	50	PHE
2	H	521	ASN
2	H	83	ARG
2	H	135	THR
2	H	138	LEU
2	H	149	PRO
2	H	170	LEU
2	H	178	LEU

*Continued on next page...*

*Continued from previous page...*

Mol	Chain	Res	Type
2	H	183	THR
2	H	187	SER
2	H	209	LYS
1	A	2	LEU
1	A	15	LEU
1	A	17	ASP
1	A	24	ARG
1	A	49	TYR
1	A	50	LYS
1	A	51	VAL
1	A	60	ASP
1	A	90	GLN
1	A	105	GLU
1	A	137	ASN
1	A	142	ARG
1	A	143	GLU
1	A	205	VAL
2	B	50	PHE
2	B	521	ASN
2	B	83	ARG
2	B	135	THR
2	B	138	LEU
2	B	149	PRO
2	B	170	LEU
2	B	178	LEU
2	B	183	THR
2	B	187	SER
2	B	209	LYS

Some sidechains can be flipped to improve hydrogen bonding and reduce clashes. All (26) such sidechains are listed below:

Mol	Chain	Res	Type
1	L	6	GLN
1	L	53	ASN
1	L	137	ASN
1	L	138	ASN
1	L	147	GLN
1	L	160	GLN
1	L	198	HIS
1	L	199	GLN
1	L	210	ASN
2	H	521	ASN

*Continued on next page...*

*Continued from previous page...*

Mol	Chain	Res	Type
2	H	155	ASN
2	H	164	HIS
2	H	171	GLN
2	H	197	ASN
1	A	6	GLN
1	A	53	ASN
1	A	137	ASN
1	A	138	ASN
1	A	147	GLN
1	A	160	GLN
1	A	199	GLN
2	B	521	ASN
2	B	105	GLN
2	B	155	ASN
2	B	171	GLN
2	B	197	ASN

### 5.3.3 RNA [i](#)

There are no RNA molecules in this entry.

## 5.4 Non-standard residues in protein, DNA, RNA chains [i](#)

There are no non-standard protein/DNA/RNA residues in this entry.

## 5.5 Carbohydrates [i](#)

There are no carbohydrates in this entry.

## 5.6 Ligand geometry [i](#)

2 ligands are modelled in this entry.

In the following table, the Counts columns list the number of bonds (or angles) for which Mogul statistics could be retrieved, the number of bonds (or angles) that are observed in the model and the number of bonds (or angles) that are defined in the chemical component dictionary. The Link column lists molecule types, if any, to which the group is linked. The Z score for a bond length (or angle) is the number of standard deviations the observed value is removed from the expected value. A bond length (or angle) with  $|Z| > 2$  is considered an outlier worth inspection. RMSZ is the root-mean-square of all Z scores of the bond lengths (or angles).

Mol	Type	Chain	Res	Link	Bond lengths			Bond angles		
					Counts	RMSZ	# Z  > 2	Counts	RMSZ	# Z  > 2
3	AAH	B	824	-	19,23,23	2.46	10 (52%)	23,31,31	1.26	3 (13%)
3	AAH	H	824	-	19,23,23	2.49	11 (57%)	23,31,31	1.26	3 (13%)

In the following table, the Chirals column lists the number of chiral outliers, the number of chiral centers analysed, the number of these observed in the model and the number defined in the chemical component dictionary. Similar counts are reported in the Torsion and Rings columns. '-' means no outliers of that kind were identified.

Mol	Type	Chain	Res	Link	Chirals	Torsions	Rings
3	AAH	B	824	-	-	0/16/20/20	0/1/1/1
3	AAH	H	824	-	-	0/16/20/20	0/1/1/1

All (21) bond length outliers are listed below:

Mol	Chain	Res	Type	Atoms	Z	Observed(Å)	Ideal(Å)
3	B	824	AAH	P13-O16	-4.05	1.45	1.54
3	H	824	AAH	P13-O16	-3.77	1.46	1.54
3	B	824	AAH	O8-N7	-2.34	1.18	1.22
3	H	824	AAH	O8-N7	-2.30	1.18	1.22
3	B	824	AAH	C2-C1	2.03	1.42	1.38
3	H	824	AAH	C10-C3	2.21	1.55	1.51
3	B	824	AAH	C1-C6	2.24	1.43	1.38
3	H	824	AAH	C2-C1	2.36	1.43	1.38
3	B	824	AAH	C5-C4	2.40	1.43	1.38
3	H	824	AAH	C1-C6	2.57	1.44	1.38
3	H	824	AAH	P13-O14	2.62	1.55	1.50
3	B	824	AAH	C6-N7	2.63	1.50	1.45
3	H	824	AAH	C5-C4	2.85	1.43	1.38
3	B	824	AAH	P13-O14	3.06	1.56	1.50
3	B	824	AAH	C2-C3	3.23	1.45	1.38
3	H	824	AAH	C6-N7	3.27	1.52	1.45
3	H	824	AAH	P13-O15	3.32	1.62	1.54
3	B	824	AAH	P13-O15	3.52	1.63	1.54
3	H	824	AAH	C2-C3	3.56	1.46	1.38
3	H	824	AAH	C17-N11	4.04	1.56	1.47
3	B	824	AAH	C17-N11	4.76	1.58	1.47

All (6) bond angle outliers are listed below:

Mol	Chain	Res	Type	Atoms	Z	Observed(°)	Ideal(°)
3	H	824	AAH	O15-P13-O14	-2.33	106.07	112.32
3	B	824	AAH	O15-P13-O14	-2.19	106.45	112.32

Continued on next page...

*Continued from previous page...*

Mol	Chain	Res	Type	Atoms	Z	Observed(°)	Ideal(°)
3	H	824	AAH	O15-P13-C12	2.79	112.73	106.69
3	B	824	AAH	O15-P13-C12	3.02	113.23	106.69
3	H	824	AAH	C3-C10-N11	3.11	119.15	113.17
3	B	824	AAH	C3-C10-N11	3.29	119.51	113.17

There are no chirality outliers.

There are no torsion outliers.

There are no ring outliers.

2 monomers are involved in 5 short contacts:

Mol	Chain	Res	Type	Clashes	Symm-Clashes
3	B	824	AAH	4	0
3	H	824	AAH	1	0

## 5.7 Other polymers [i](#)

There are no such residues in this entry.

## 5.8 Polymer linkage issues [i](#)

There are no chain breaks in this entry.



## 6 Fit of model and data ⓘ

### 6.1 Protein, DNA and RNA chains ⓘ

In the following table, the column labelled ‘#RSRZ> 2’ contains the number (and percentage) of RSRZ outliers, followed by percent RSRZ outliers for the chain as percentile scores relative to all X-ray entries and entries of similar resolution. The OWAB column contains the minimum, median, 95<sup>th</sup> percentile and maximum values of the occupancy-weighted average B-factor per residue. The column labelled ‘Q< 0.9’ lists the number of (and percentage) of residues with an average occupancy less than 0.9.

Mol	Chain	Analysed	<RSRZ>	#RSRZ>2	OWAB(Å <sup>2</sup> )	Q<0.9
1	A	217/217 (100%)	0.00	2 (0%) 84 79	12, 42, 68, 84	0
1	L	217/217 (100%)	0.08	5 (2%) 61 51	13, 43, 68, 85	0
2	B	219/219 (100%)	-0.19	9 (4%) 38 27	11, 28, 52, 96	0
2	H	219/219 (100%)	-0.20	8 (3%) 42 31	12, 27, 50, 96	0
All	All	872/872 (100%)	-0.08	24 (2%) 53 43	11, 33, 66, 96	0

All (24) RSRZ outliers are listed below:

Mol	Chain	Res	Type	RSRZ
2	B	133	GLY	7.5
2	B	132	SER	7.4
2	H	132	SER	7.1
2	H	128	SER	6.8
2	B	128	SER	6.4
2	H	130	SER	5.3
2	H	129	LYS	5.0
1	L	1	GLU	4.9
2	H	131	THR	4.8
2	H	133	GLY	4.6
1	A	1	GLU	4.6
2	B	129	LYS	4.5
2	B	130	SER	3.7
2	B	131	THR	3.7
1	L	70	ASP	3.6
1	L	157	GLY	3.1
1	L	24	ARG	2.9
1	L	199	GLN	2.5
2	B	134	GLY	2.5
2	H	127	SER	2.2
2	H	191	THR	2.1

*Continued on next page...*

*Continued from previous page...*

Mol	Chain	Res	Type	RSRZ
1	A	212	GLY	2.0
2	B	213	PRO	2.0
2	B	97	SER	2.0

## 6.2 Non-standard residues in protein, DNA, RNA chains [i](#)

There are no non-standard protein/DNA/RNA residues in this entry.

## 6.3 Carbohydrates [i](#)

There are no carbohydrates in this entry.

## 6.4 Ligands [i](#)

In the following table, the Atoms column lists the number of modelled atoms in the group and the number defined in the chemical component dictionary. LLDF column lists the quality of electron density of the group with respect to its neighbouring residues in protein, DNA or RNA chains. The B-factors column lists the minimum, median, 95<sup>th</sup> percentile and maximum values of B factors of atoms in the group. The column labelled 'Q< 0.9' lists the number of atoms with occupancy less than 0.9.

Mol	Type	Chain	Res	Atoms	RSCC	RSR	LLDF	B-factors( $\text{\AA}^2$ )	Q<0.9
3	AAH	B	824	23/23	0.46	0.61	9.35	85,90,95,96	0
3	AAH	H	824	23/23	0.61	0.41	3.77	75,79,84,85	0

## 6.5 Other polymers [i](#)

There are no such residues in this entry.