



Full wwPDB X-ray Structure Validation Report ⓘ

Feb 27, 2018 – 12:26 PM EST

PDB ID : 5FP3
Title : Cell penetrant inhibitors of the JMJD2 (KDM4) and JARID1 (KDM5) families
of histone lysine demethylases
Authors : Chung, C.
Deposited on : 2015-11-27
Resolution : 2.05 Å(reported)

This is a Full wwPDB X-ray Structure Validation Report for a publicly released PDB entry.

We welcome your comments at validation@mail.wwpdb.org

A user guide is available at

<http://wwpdb.org/validation/2016/XrayValidationReportHelp>

with specific help available everywhere you see the ⓘ symbol.

The following versions of software and data (see [references ⓘ](#)) were used in the production of this report:

MolProbity : 4.02b-467
Mogul : 1.7.2 (RC1), CSD as538be (2017)
Xtriage (Phenix) : 1.9-1692
EDS : rb-20030736
Percentile statistics : 20161228.v01 (using entries in the PDB archive December 28th 2016)
Refmac : 5.8.0135
CCP4 : 6.5.0
Ideal geometry (proteins) : Engh & Huber (2001)
Ideal geometry (DNA, RNA) : Parkinson et al. (1996)
Validation Pipeline (wwPDB-VP) : rb-20030736

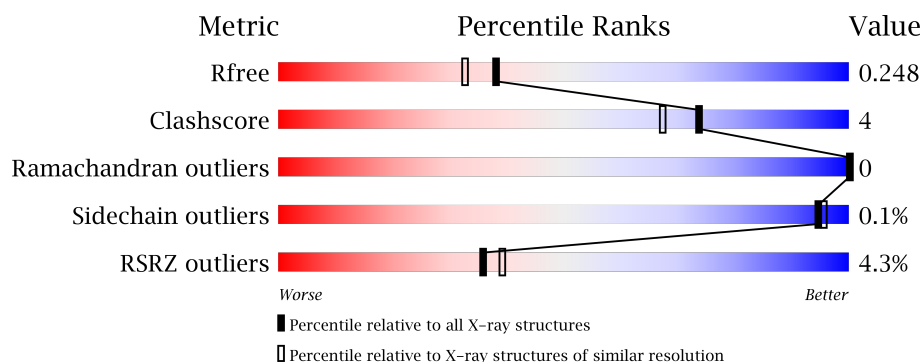
1 Overall quality at a glance

The following experimental techniques were used to determine the structure:

X-RAY DIFFRACTION

The reported resolution of this entry is 2.05 Å.

Percentile scores (ranging between 0-100) for global validation metrics of the entry are shown in the following graphic. The table shows the number of entries on which the scores are based.



Metric	Whole archive (#Entries)	Similar resolution (#Entries, resolution range(Å))
R_{free}	100719	1316 (2.04-2.04)
Clashscore	112137	1394 (2.04-2.04)
Ramachandran outliers	110173	1383 (2.04-2.04)
Sidechain outliers	110143	1383 (2.04-2.04)
RSRZ outliers	101464	1319 (2.04-2.04)

The table below summarises the geometric issues observed across the polymeric chains and their fit to the electron density. The red, orange, yellow and green segments on the lower bar indicate the fraction of residues that contain outliers for ≥ 3 , 2, 1 and 0 types of geometric quality criteria. A grey segment represents the fraction of residues that are not modelled. The numeric value for each fraction is indicated below the corresponding segment, with a dot representing fractions $\leq 5\%$. The upper red bar (where present) indicates the fraction of residues that have poor fit to the electron density. The numeric value is given above the bar.

Mol	Chain	Length	Quality of chain
1	A	510	<div> <div>5%</div> <div> <div></div> <div>78%</div> <div>8%</div> <div>15%</div> </div> </div>
1	B	510	<div> <div>3%</div> <div> <div></div> <div>76%</div> <div>7%</div> <div>17%</div> </div> </div>

The following table lists non-polymeric compounds, carbohydrate monomers and non-standard residues in protein, DNA, RNA chains that are outliers for geometric or electron-density-fit criteria:

Mol	Type	Chain	Res	Chirality	Geometry	Clashes	Electron density
5	BCN	A	2640[A]	-	-	-	X
5	BCN	A	2640[B]	-	-	-	X
5	BCN	B	2640	-	-	-	X

2 Entry composition

There are 7 unique types of molecules in this entry. The entry contains 7843 atoms, of which 0 are hydrogens and 0 are deuteriums.

In the tables below, the ZeroOcc column contains the number of atoms modelled with zero occupancy, the AltConf column contains the number of residues with at least one atom in alternate conformation and the Trace column contains the number of residues modelled with at most 2 atoms.

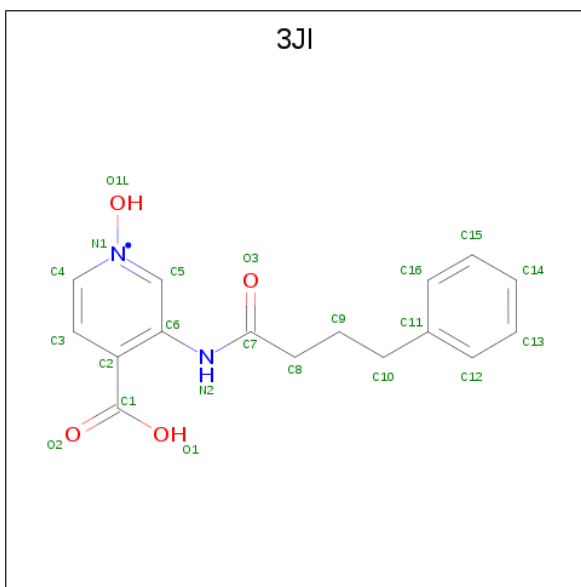
- Molecule 1 is a protein called HUMAN LYSINE-SPECIFIC DEMETHYLASE 6B, JMJD3.

Mol	Chain	Residues	Atoms					ZeroOcc	AltConf	Trace
1	A	435	Total	C	N	O	S	0	9	0
			3513	2233	614	646	20			
1	B	423	Total	C	N	O	S	0	1	0
			3390	2159	593	619	19			

There are 14 discrepancies between the modelled and reference sequences:

Chain	Residue	Modelled	Actual	Comment	Reference
A	1140	MET	-	expression tag	UNP O15054
A	1644	HIS	-	expression tag	UNP O15054
A	1645	HIS	-	expression tag	UNP O15054
A	1646	HIS	-	expression tag	UNP O15054
A	1647	HIS	-	expression tag	UNP O15054
A	1648	HIS	-	expression tag	UNP O15054
A	1649	HIS	-	expression tag	UNP O15054
B	1140	MET	-	expression tag	UNP O15054
B	1644	HIS	-	expression tag	UNP O15054
B	1645	HIS	-	expression tag	UNP O15054
B	1646	HIS	-	expression tag	UNP O15054
B	1647	HIS	-	expression tag	UNP O15054
B	1648	HIS	-	expression tag	UNP O15054
B	1649	HIS	-	expression tag	UNP O15054

- Molecule 2 is 3-(4-PHENYLBUTANAMIDO)PYRIDINE-4-CARBOXYLIC ACID (three-letter code: 3JI) (formula: C₁₆H₁₇N₂O₄).



Mol	Chain	Residues	Atoms				ZeroOcc	AltConf
2	A	1	Total	C	N	O	0	0
			21	16	2	3		
2	B	1	Total	C	N	O	0	0
			21	16	2	3		

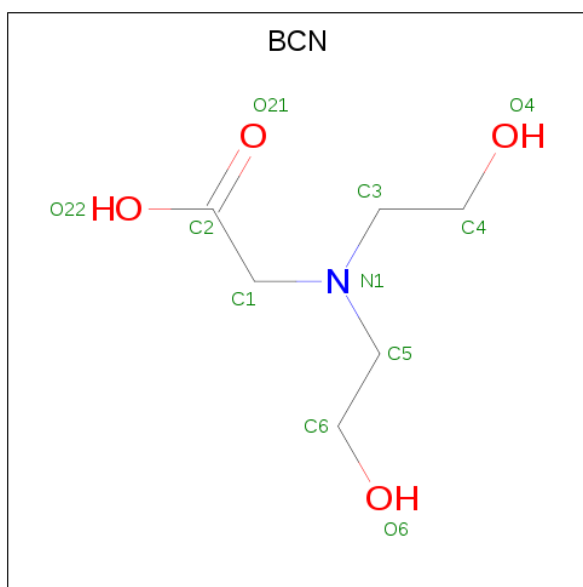
- Molecule 3 is ZINC ION (three-letter code: ZN) (formula: Zn).

Mol	Chain	Residues	Atoms		ZeroOcc	AltConf
3	B	1	Total	Zn	0	0
			1	1		
3	A	1	Total	Zn	0	0
			1	1		

- Molecule 4 is MAGNESIUM ION (three-letter code: MG) (formula: Mg).

Mol	Chain	Residues	Atoms		ZeroOcc	AltConf
4	B	2	Total	Mg	0	0
			2	2		
4	A	2	Total	Mg	0	0
			2	2		

- Molecule 5 is BICINE (three-letter code: BCN) (formula: C₆H₁₃NO₄).



Mol	Chain	Residues	Atoms				ZeroOcc	AltConf
5	A	1	Total	C	N	O	0	1
			22	12	2	8		
5	A	1	Total	C	N	O	0	0
			11	6	1	4		
5	B	1	Total	C	N	O	0	0
			11	6	1	4		
5	B	1	Total	C	N	O	0	0
			11	6	1	4		

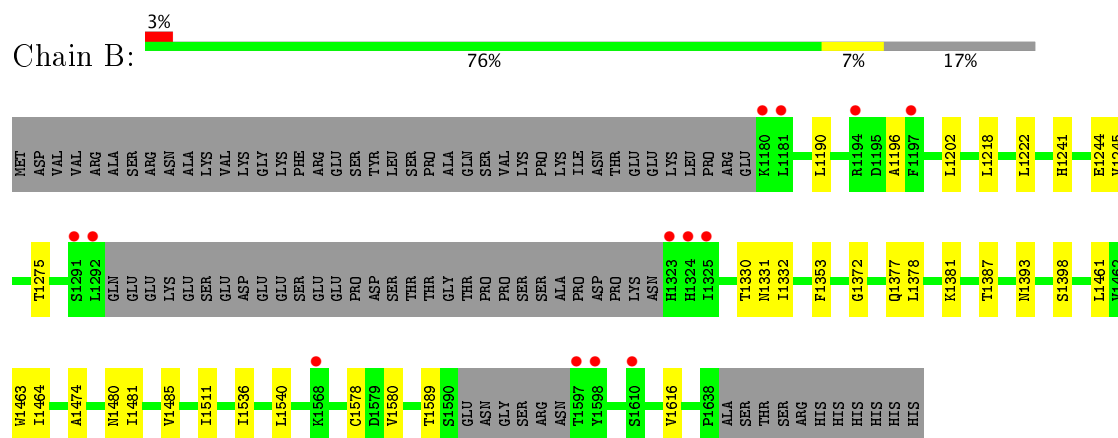
- Molecule 6 is COBALT (II) ION (three-letter code: CO) (formula: Co).

Mol	Chain	Residues	Atoms		ZeroOcc	AltConf
6	B	1	Total	Co	0	0
			1	1		
6	A	1	Total	Co	0	0
			1	1		

- Molecule 7 is water.

Mol	Chain	Residues	Atoms		ZeroOcc	AltConf
7	A	468	Total	O	0	0
			468	468		
7	B	367	Total	O	0	0
			367	367		

- Molecule 1: HUMAN LYSINE-SPECIFIC DEMETHYLASE 6B, JMJD3



4 Data and refinement statistics

Property	Value	Source
Space group	P 1	Depositor
Cell constants a, b, c, α , β , γ	61.20Å 65.55Å 77.30Å 85.59° 67.65° 68.39°	Depositor
Resolution (Å)	71.30 – 2.05 36.68 – 2.05	Depositor EDS
% Data completeness (in resolution range)	95.7 (71.30-2.05) 93.5 (36.68-2.05)	Depositor EDS
R_{merge}	0.07	Depositor
R_{sym}	(Not available)	Depositor
$\langle I/\sigma(I) \rangle$ ¹	3.46 (at 2.05Å)	Xtriage
Refinement program	REFMAC 5.6.0117	Depositor
R, R_{free}	0.205 , 0.243 0.209 , 0.248	Depositor DCC
R_{free} test set	2470 reflections (4.18%)	DCC
Wilson B-factor (Å ²)	21.7	Xtriage
Anisotropy	0.478	Xtriage
Bulk solvent k_{sol} (e/Å ³), B_{sol} (Å ²)	0.33 , 36.2	EDS
L-test for twinning ²	$\langle L \rangle = 0.49$, $\langle L^2 \rangle = 0.33$	Xtriage
Estimated twinning fraction	No twinning to report.	Xtriage
F_o, F_c correlation	0.94	EDS
Total number of atoms	7843	wwPDB-VP
Average B, all atoms (Å ²)	29.0	wwPDB-VP

Xtriage's analysis on translational NCS is as follows: *The largest off-origin peak in the Patterson function is 7.62% of the height of the origin peak. No significant pseudotranslation is detected.*

¹Intensities estimated from amplitudes.

²Theoretical values of $\langle |L| \rangle$, $\langle L^2 \rangle$ for acentric reflections are 0.5, 0.333 respectively for untwinned datasets, and 0.375, 0.2 for perfectly twinned datasets.

5 Model quality

5.1 Standard geometry

Bond lengths and bond angles in the following residue types are not validated in this section: MG, 3JI, CO, ZN, BCN

The Z score for a bond length (or angle) is the number of standard deviations the observed value is removed from the expected value. A bond length (or angle) with $|Z| > 5$ is considered an outlier worth inspection. RMSZ is the root-mean-square of all Z scores of the bond lengths (or angles).

Mol	Chain	Bond lengths		Bond angles	
		RMSZ	# Z >5	RMSZ	# Z >5
1	A	0.49	0/3614	0.47	0/4923
1	B	0.50	0/3480	0.47	0/4740
All	All	0.50	0/7094	0.47	0/9663

There are no bond length outliers.

There are no bond angle outliers.

There are no chirality outliers.

There are no planarity outliers.

5.2 Too-close contacts

In the following table, the Non-H and H(model) columns list the number of non-hydrogen atoms and hydrogen atoms in the chain respectively. The H(added) column lists the number of hydrogen atoms added and optimized by MolProbity. The Clashes column lists the number of clashes within the asymmetric unit, whereas Symm-Clashes lists symmetry related clashes.

Mol	Chain	Non-H	H(model)	H(added)	Clashes	Symm-Clashes
1	A	3513	0	3394	24	0
1	B	3390	0	3293	25	0
2	A	21	0	15	2	0
2	B	21	0	15	2	0
3	A	1	0	0	0	0
3	B	1	0	0	0	0
4	A	2	0	0	0	0
4	B	2	0	0	0	0
5	A	33	0	36	1	0
5	B	22	0	23	0	0
6	A	1	0	0	0	0

Continued on next page...

Continued from previous page...

Mol	Chain	Non-H	H(model)	H(added)	Clashes	Symm-Clashes
6	B	1	0	0	0	0
7	A	468	0	0	3	0
7	B	367	0	0	0	0
All	All	7843	0	6776	52	0

The all-atom clashscore is defined as the number of clashes found per 1000 atoms (including hydrogen atoms). The all-atom clashscore for this structure is 4.

All (52) close contacts within the same asymmetric unit are listed below, sorted by their clash magnitude.

Atom-1	Atom-2	Interatomic distance (Å)	Clash overlap (Å)
1:A:1190:LEU:HD13	1:A:1196:ALA:HB2	1.68	0.76
1:B:1332:ILE:HD12	1:B:1378:LEU:HD12	1.70	0.72
1:B:1190:LEU:HD13	1:B:1196:ALA:HB2	1.74	0.68
1:A:1234:LEU:HD13	1:A:1378:LEU:HD21	1.76	0.66
1:B:1378:LEU:HD23	1:B:1481:ILE:HG22	1.85	0.58
1:A:1188:ILE:HD11	1:A:1204:PHE:CD1	2.40	0.55
1:B:1589:THR:HG22	1:B:1616:VAL:HG22	1.88	0.55
1:B:1378:LEU:HD23	1:B:1481:ILE:CG2	2.39	0.53
1:B:1196:ALA:CB	1:B:1222:LEU:HD21	2.39	0.53
1:B:1387:THR:HG21	2:B:1:3JI:C6	2.40	0.52
1:B:1398:SER:HB3	1:B:1464:ILE:HD13	1.91	0.52
1:B:1589:THR:CG2	1:B:1616:VAL:HG22	2.40	0.51
1:B:1381:LYS:HD3	1:B:1474:ALA:HB2	1.93	0.51
1:B:1464:ILE:N	1:B:1464:ILE:HD12	2.26	0.51
5:A:2640[B]:BCN:O4	5:A:2640[B]:BCN:C2	2.59	0.51
1:B:1463:TRP:CZ3	1:B:1485:VAL:HG21	2.46	0.50
1:A:1463:TRP:CZ3	1:A:1485[A]:VAL:HG21	2.47	0.50
1:B:1244:GLU:O	1:B:1330:THR:HG22	2.12	0.50
2:B:1:3JI:O3	2:B:1:3JI:H5	2.13	0.49
2:A:1:3JI:O3	2:A:1:3JI:H5	2.12	0.49
1:B:1393:ASN:ND2	1:B:1511:ILE:HD12	2.27	0.49
1:A:1354:MET:HE3	1:A:1461:LEU:HD13	1.94	0.48
1:B:1218:LEU:HD13	1:B:1461:LEU:HD13	1.95	0.48
1:A:1245:VAL:CG2	1:A:1275:THR:HG22	2.45	0.47
1:B:1536:ILE:O	1:B:1540:LEU:HD13	2.15	0.47
1:A:1475:THR:HG22	7:A:2240:HOH:O	2.15	0.46
1:A:1386:ARG:HG3	1:A:1438:TRP:CZ3	2.50	0.46
1:A:1202:LEU:HD13	1:A:1353:PHE:CG	2.52	0.45
1:A:1244:GLU:O	1:A:1330:THR:HG22	2.17	0.45
1:A:1536:ILE:O	1:A:1540:LEU:HD13	2.17	0.45

Continued on next page...

Continued from previous page...

Atom-1	Atom-2	Interatomic distance (Å)	Clash overlap (Å)
1:A:1613:LEU:HD11	7:A:2407:HOH:O	2.15	0.45
1:B:1331:ASN:HD22	1:B:1331:ASN:N	2.15	0.45
1:B:1463:TRP:CH2	1:B:1485:VAL:HG21	2.52	0.44
1:A:1463:TRP:CH2	1:A:1485[A]:VAL:HG21	2.52	0.44
1:A:1526:LYS:HD2	1:A:1637:ALA:HB2	2.00	0.44
1:B:1245:VAL:HG23	1:B:1275:THR:HG22	2.00	0.44
1:B:1332:ILE:HD12	1:B:1378:LEU:CD1	2.44	0.44
1:A:1551:ARG:NH2	7:A:2338:HOH:O	2.52	0.43
1:B:1372:GLY:HA2	1:B:1377:GLN:HG2	2.01	0.43
1:A:1397:CYS:HB2	1:A:1485[A]:VAL:HG23	2.01	0.42
1:B:1202:LEU:HD13	1:B:1353:PHE:CG	2.55	0.42
1:B:1378:LEU:HD22	1:B:1480:ASN:O	2.19	0.42
1:B:1578:CYS:SG	1:B:1580:VAL:HG13	2.60	0.42
1:A:1250:GLN:HE22	1:A:1320:PRO:HA	1.85	0.42
1:A:1381:LYS:HD3	1:A:1474:ALA:HB2	2.02	0.41
1:A:1387:THR:HG21	2:A:1:3JI:C6	2.50	0.41
1:A:1245:VAL:HG23	1:A:1275:THR:HG22	2.02	0.41
1:A:1589:THR:CG2	1:A:1616:VAL:HG22	2.50	0.41
1:A:1527:ILE:O	1:A:1636:LEU:HD12	2.20	0.41
1:A:1425:CYS:HB3	1:A:1430:VAL:HG13	2.03	0.41
1:B:1378:LEU:HD13	1:B:1378:LEU:C	2.41	0.41
1:A:1578:CYS:SG	1:A:1580:VAL:HG22	2.62	0.40

There are no symmetry-related clashes.

5.3 Torsion angles [i](#)

5.3.1 Protein backbone [i](#)

In the following table, the Percentiles column shows the percent Ramachandran outliers of the chain as a percentile score with respect to all X-ray entries followed by that with respect to entries of similar resolution.

The Analysed column shows the number of residues for which the backbone conformation was analysed, and the total number of residues.

Mol	Chain	Analysed	Favoured	Allowed	Outliers	Percentiles	
1	A	440/510 (86%)	429 (98%)	11 (2%)	0	100	100
1	B	418/510 (82%)	409 (98%)	9 (2%)	0	100	100
All	All	858/1020 (84%)	838 (98%)	20 (2%)	0	100	100

There are no Ramachandran outliers to report.

5.3.2 Protein sidechains ⓘ

In the following table, the Percentiles column shows the percent sidechain outliers of the chain as a percentile score with respect to all X-ray entries followed by that with respect to entries of similar resolution.

The Analysed column shows the number of residues for which the sidechain conformation was analysed, and the total number of residues.

Mol	Chain	Analysed	Rotameric	Outliers	Percentiles	
1	A	382/452 (84%)	382 (100%)	0	100	100
1	B	370/452 (82%)	369 (100%)	1 (0%)	94	94
All	All	752/904 (83%)	751 (100%)	1 (0%)	94	95

All (1) residues with a non-rotameric sidechain are listed below:

Mol	Chain	Res	Type
1	B	1241	HIS

Some sidechains can be flipped to improve hydrogen bonding and reduce clashes. All (13) such sidechains are listed below:

Mol	Chain	Res	Type
1	A	1203	GLN
1	A	1250	GLN
1	A	1331	ASN
1	A	1416	HIS
1	A	1503	ASN
1	A	1507	ASN
1	A	1550	GLN
1	A	1564	GLN
1	B	1331	ASN
1	B	1345	GLN
1	B	1494	GLN
1	B	1550	GLN
1	B	1564	GLN

5.3.3 RNA ⓘ

There are no RNA molecules in this entry.

5.4 Non-standard residues in protein, DNA, RNA chains [i](#)

There are no non-standard protein/DNA/RNA residues in this entry.

5.5 Carbohydrates [i](#)

There are no carbohydrates in this entry.

5.6 Ligand geometry [i](#)

Of 15 ligands modelled in this entry, 8 are monoatomic - leaving 7 for Mogul analysis.

In the following table, the Counts columns list the number of bonds (or angles) for which Mogul statistics could be retrieved, the number of bonds (or angles) that are observed in the model and the number of bonds (or angles) that are defined in the Chemical Component Dictionary. The Link column lists molecule types, if any, to which the group is linked. The Z score for a bond length (or angle) is the number of standard deviations the observed value is removed from the expected value. A bond length (or angle) with $|Z| > 2$ is considered an outlier worth inspection. RMSZ is the root-mean-square of all Z scores of the bond lengths (or angles).

Mol	Type	Chain	Res	Link	Bond lengths			Bond angles		
					Counts	RMSZ	$\# Z > 2$	Counts	RMSZ	$\# Z > 2$
2	3JI	A	1	6	19,22,23	0.57	0	22,28,30	0.60	0
5	BCN	A	2640[A]	4	7,10,10	0.29	0	8,11,11	1.17	1 (12%)
5	BCN	A	2640[B]	4	7,10,10	0.28	0	8,11,11	1.15	1 (12%)
5	BCN	A	2641	4	7,10,10	0.43	0	8,11,11	0.90	1 (12%)
2	3JI	B	1	6	19,22,23	0.56	0	22,28,30	0.62	0
5	BCN	B	2640	4	7,10,10	0.39	0	8,11,11	0.84	1 (12%)
5	BCN	B	2641	4	7,10,10	0.41	0	8,11,11	1.02	1 (12%)

In the following table, the Chirals column lists the number of chiral outliers, the number of chiral centers analysed, the number of these observed in the model and the number defined in the Chemical Component Dictionary. Similar counts are reported in the Torsion and Rings columns. '-' means no outliers of that kind were identified.

Mol	Type	Chain	Res	Link	Chirals	Torsions	Rings
2	3JI	A	1	6	-	0/10/25/27	0/2/2/2
5	BCN	A	2640[A]	4	-	0/8/10/10	0/0/0/0
5	BCN	A	2640[B]	4	-	0/8/10/10	0/0/0/0
5	BCN	A	2641	4	-	0/8/10/10	0/0/0/0
2	3JI	B	1	6	-	0/10/25/27	0/2/2/2
5	BCN	B	2640	4	-	0/8/10/10	0/0/0/0
5	BCN	B	2641	4	-	0/8/10/10	0/0/0/0

There are no bond length outliers.

All (5) bond angle outliers are listed below:

Mol	Chain	Res	Type	Atoms	Z	Observed($^{\circ}$)	Ideal($^{\circ}$)
5	B	2641	BCN	C2-C1-N1	-2.68	109.67	113.48
5	A	2640[B]	BCN	C2-C1-N1	-2.49	109.93	113.48
5	A	2640[A]	BCN	C2-C1-N1	-2.49	109.93	113.48
5	A	2641	BCN	C2-C1-N1	-2.34	110.15	113.48
5	B	2640	BCN	C2-C1-N1	-2.01	110.62	113.48

There are no chirality outliers.

There are no torsion outliers.

There are no ring outliers.

3 monomers are involved in 5 short contacts:

Mol	Chain	Res	Type	Clashes	Symm-Clashes
2	A	1	3JI	2	0
5	A	2640[B]	BCN	1	0
2	B	1	3JI	2	0

5.7 Other polymers [i](#)

There are no such residues in this entry.

5.8 Polymer linkage issues [i](#)

There are no chain breaks in this entry.

6 Fit of model and data

6.1 Protein, DNA and RNA chains

In the following table, the column labelled ‘#RSRZ> 2’ contains the number (and percentage) of RSRZ outliers, followed by percent RSRZ outliers for the chain as percentile scores relative to all X-ray entries and entries of similar resolution. The OWAB column contains the minimum, median, 95th percentile and maximum values of the occupancy-weighted average B-factor per residue. The column labelled ‘Q< 0.9’ lists the number of (and percentage) of residues with an average occupancy less than 0.9.

Mol	Chain	Analysed	<RSRZ>	#RSRZ>2		OWAB(Å ²)	Q<0.9
1	A	435/510 (85%)	0.17	24 (5%)	26 28	16, 26, 53, 92	0
1	B	423/510 (82%)	0.07	13 (3%)	49 55	17, 27, 48, 74	0
All	All	858/1020 (84%)	0.12	37 (4%)	36 39	16, 26, 50, 92	0

All (37) RSRZ outliers are listed below:

Mol	Chain	Res	Type	RSRZ
1	A	1322	ASN	9.4
1	A	1593	GLY	9.1
1	A	1323	HIS	8.4
1	A	1320	PRO	8.1
1	B	1181	LEU	7.1
1	B	1292	LEU	6.3
1	A	1594	SER	6.2
1	A	1595	ARG	5.9
1	A	1321	LYS	5.6
1	A	1592	ASN	5.6
1	B	1597	THR	5.5
1	B	1323	HIS	4.8
1	B	1180	LYS	4.5
1	A	1596	ASN	4.3
1	A	1591	GLU	3.9
1	A	1598	TYR	3.9
1	B	1568	LYS	3.7
1	A	1291	SER	3.2
1	A	1289	GLN	3.1
1	B	1598	TYR	3.1
1	A	1290	GLU	3.0
1	A	1597	THR	3.0
1	A	1178	ARG	3.0
1	A	1590	SER	2.9

Continued on next page...

Continued from previous page...

Mol	Chain	Res	Type	RSRZ
1	A	1177	PRO	2.9
1	A	1638	PRO	2.8
1	B	1197	PHE	2.8
1	A	1194	ARG	2.7
1	A	1568	LYS	2.7
1	B	1325	ILE	2.5
1	B	1324	HIS	2.5
1	A	1179	GLU	2.3
1	B	1194	ARG	2.3
1	A	1324	HIS	2.2
1	B	1610	SER	2.1
1	B	1291	SER	2.0
1	A	1615	GLY	2.0

6.2 Non-standard residues in protein, DNA, RNA chains [i](#)

There are no non-standard protein/DNA/RNA residues in this entry.

6.3 Carbohydrates [i](#)

There are no carbohydrates in this entry.

6.4 Ligands [i](#)

In the following table, the Atoms column lists the number of modelled atoms in the group and the number defined in the chemical component dictionary. LLDF column lists the quality of electron density of the group with respect to its neighbouring residues in protein, DNA or RNA chains. The B-factors column lists the minimum, median, 95th percentile and maximum values of B factors of atoms in the group. The column labelled 'Q< 0.9' lists the number of atoms with occupancy less than 0.9.

Mol	Type	Chain	Res	Atoms	RSCC	RSR	LLDF	B-factors(Å ²)	Q<0.9
5	BCN	A	2640[B]	11/11	0.87	0.20	6.11	25,27,27,28	11
5	BCN	A	2640[A]	11/11	0.87	0.20	5.01	28,29,30,31	11
5	BCN	B	2640	11/11	0.88	0.15	2.20	31,34,36,37	0
5	BCN	B	2641	11/11	0.84	0.17	1.83	26,28,31,33	0
5	BCN	A	2641	11/11	0.86	0.15	0.39	33,33,35,35	0
2	3JI	A	1	21/22	0.90	0.15	0.37	19,20,25,25	0
2	3JI	B	1	21/22	0.95	0.12	-0.58	19,21,27,27	0
3	ZN	A	2000	1/1	1.00	0.02	-2.43	29,29,29,29	0

Continued on next page...

Continued from previous page...

Mol	Type	Chain	Res	Atoms	RSCC	RSR	LLDF	B-factors(\AA^2)	Q<0.9
3	ZN	B	2000	1/1	0.99	0.02	-2.49	28,28,28,28	0
4	MG	B	2639	1/1	0.93	0.06	-	48,48,48,48	0
6	CO	A	3000	1/1	1.00	0.09	-	18,18,18,18	0
4	MG	A	2642	1/1	0.97	0.15	-	24,24,24,24	0
4	MG	B	2642	1/1	0.99	0.13	-	20,20,20,20	0
6	CO	B	3000	1/1	1.00	0.09	-	21,21,21,21	0
4	MG	A	2639	1/1	0.88	0.06	-	46,46,46,46	0

6.5 Other polymers [i](#)

There are no such residues in this entry.