



# Full wwPDB X-ray Structure Validation Report ⓘ

Sep 27, 2017 – 05:44 AM EDT

PDB ID : 1FQG  
Title : MOLECULAR STRUCTURE OF THE ACYL-ENZYME INTERMEDIATE  
IN TEM-1 BETA-LACTAMASE  
Authors : Strynadka, N.C.  
Deposited on : unknown  
Resolution : 1.70 Å(reported)

This is a Full wwPDB X-ray Structure Validation Report for a publicly released PDB entry.

We welcome your comments at [validation@mail.wwpdb.org](mailto:validation@mail.wwpdb.org)

A user guide is available at

<http://wwpdb.org/validation/2016/XrayValidationReportHelp>

with specific help available everywhere you see the ⓘ symbol.

---

The following versions of software and data (see [references ⓘ](#)) were used in the production of this report:

MolProbity : 4.02b-467  
Mogul : 1.7.2 (RC1), CSD as538be (2017)  
Xtriage (Phenix) : **NOT EXECUTED**  
EDS : **NOT EXECUTED**  
Percentile statistics : 20161228.v01 (using entries in the PDB archive December 28th 2016)  
Ideal geometry (proteins) : Engh & Huber (2001)  
Ideal geometry (DNA, RNA) : Parkinson et al. (1996)  
Validation Pipeline (wwPDB-VP) : rb-20030345

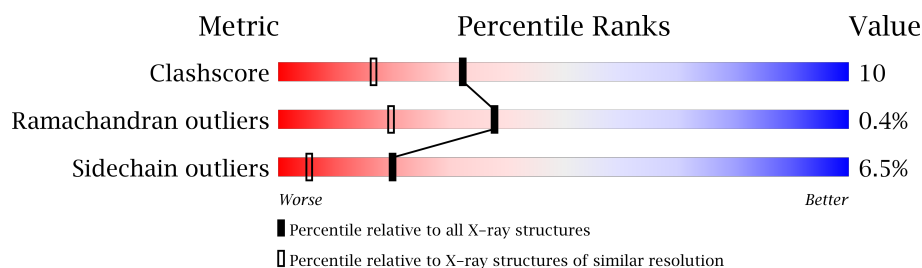
# 1 Overall quality at a glance

The following experimental techniques were used to determine the structure:

*X-RAY DIFFRACTION*

The reported resolution of this entry is 1.70 Å.


Percentile scores (ranging between 0-100) for global validation metrics of the entry are shown in the following graphic. The table shows the number of entries on which the scores are based.



Metric	Whole archive (#Entries)	Similar resolution (#Entries, resolution range(Å))
Clashscore	112137	3876 (1.70-1.70)
Ramachandran outliers	110173	3815 (1.70-1.70)
Sidechain outliers	110143	3815 (1.70-1.70)

The table below summarises the geometric issues observed across the polymeric chains and their fit to the electron density. The red, orange, yellow and green segments on the lower bar indicate the fraction of residues that contain outliers for  $\geq 3$ , 2, 1 and 0 types of geometric quality criteria. A grey segment represents the fraction of residues that are not modelled. The numeric value for each fraction is indicated below the corresponding segment, with a dot representing fractions  $\leq 5\%$ . The upper red bar (where present) indicates the fraction of residues that have poor fit to the electron density. The numeric value is given above the bar.

Note EDS was not executed.

Mol	Chain	Length	Quality of chain
1	A	263	

## 2 Entry composition [i](#)

There are 3 unique types of molecules in this entry. The entry contains 2198 atoms, of which 0 are hydrogens and 0 are deuteriums.

In the tables below, the ZeroOcc column contains the number of atoms modelled with zero occupancy, the AltConf column contains the number of residues with at least one atom in alternate conformation and the Trace column contains the number of residues modelled with at most 2 atoms.

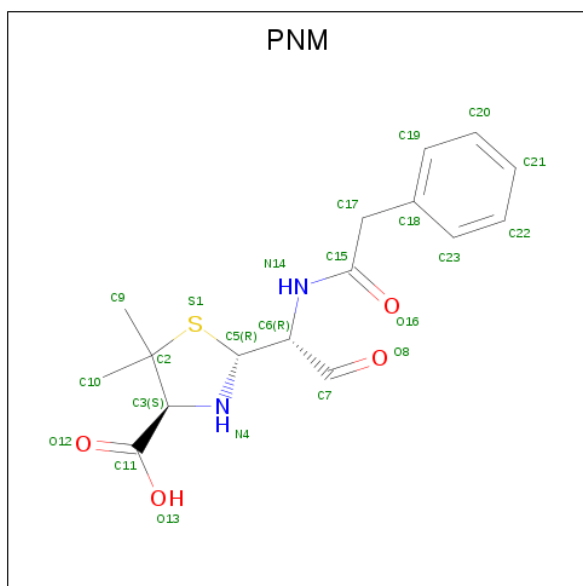
- Molecule 1 is a protein called TEM-1 BETA-LACTAMASE.

Mol	Chain	Residues	Atoms					ZeroOcc	AltConf	Trace
			Total	C	N	O	S			
1	A	263	2025	1264	361	389	11	0	0	0

There is a discrepancy between the modelled and reference sequences:

Chain	Residue	Modelled	Actual	Comment	Reference
A	166	ASN	GLU	ENGINEERED	UNP P62593

- Molecule 2 is OPEN FORM - PENICILLIN G (three-letter code: PNM) (formula: C<sub>16</sub>H<sub>20</sub>N<sub>2</sub>O<sub>4</sub>S).



Mol	Chain	Residues	Atoms					ZeroOcc	AltConf
			Total	C	N	O	S		
2	A	1	23	16	2	4	1	0	0

- Molecule 3 is water.

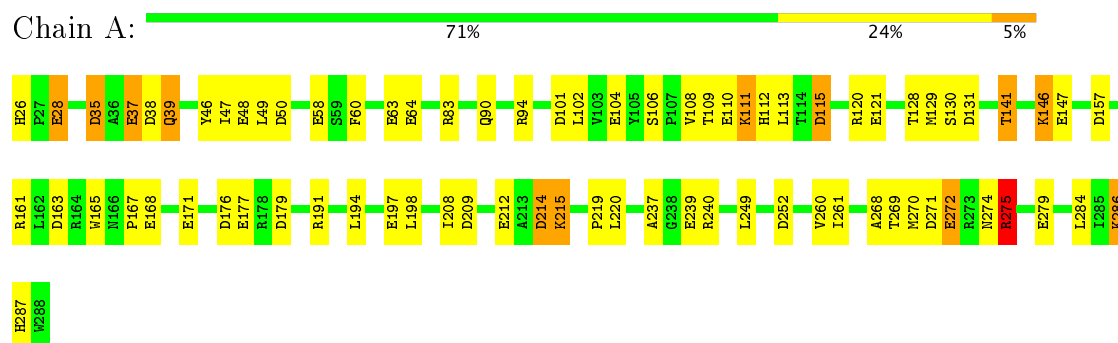
Mol	Chain	Residues	Atoms		ZeroOcc	AltConf
3	A	150	Total 150	O 150	0	0

### 3 Residue-property plots [i](#)

These plots are drawn for all protein, RNA and DNA chains in the entry. The first graphic for a chain summarises the proportions of the various outlier classes displayed in the second graphic. The second graphic shows the sequence view annotated by issues in geometry and electron density. Residues are color-coded according to the number of geometric quality criteria for which they contain at least one outlier: green = 0, yellow = 1, orange = 2 and red = 3 or more. A red dot above a residue indicates a poor fit to the electron density ( $RSRZ > 2$ ). Stretches of 2 or more consecutive residues without any outlier are shown as a green connector. Residues present in the sample, but not in the model, are shown in grey.

Note EDS was not executed.

#### • Molecule 1: TEM-1 BETA-LACTAMASE



## 4 Data and refinement statistics

Xtriage (Phenix) and EDS were not executed - this section is therefore incomplete.

Property	Value	Source
Space group	P 21 21 21	Depositor
Cell constants a, b, c, $\alpha$ , $\beta$ , $\gamma$	62.20 Å 88.30 Å 41.60 Å 90.00° 90.00° 90.00°	Depositor
Resolution (Å)	10.00 – 1.70	Depositor
% Data completeness (in resolution range)	92.0 (10.00-1.70)	Depositor
$R_{merge}$	0.05	Depositor
$R_{sym}$	(Not available)	Depositor
Refinement program	TNT	Depositor
R, $R_{free}$	0.182 , (Not available)	Depositor
Estimated twinning fraction	No twinning to report.	Xtriage
Total number of atoms	2198	wwPDB-VP
Average B, all atoms (Å <sup>2</sup> )	17.0	wwPDB-VP

## 5 Model quality

### 5.1 Standard geometry

Bond lengths and bond angles in the following residue types are not validated in this section: PNM

The Z score for a bond length (or angle) is the number of standard deviations the observed value is removed from the expected value. A bond length (or angle) with  $|Z| > 5$  is considered an outlier worth inspection. RMSZ is the root-mean-square of all Z scores of the bond lengths (or angles).

Mol	Chain	Bond lengths		Bond angles	
		RMSZ	$\# Z  > 5$	RMSZ	$\# Z  > 5$
1	A	0.84	17/2059 (0.8%)	1.12	25/2789 (0.9%)

All (17) bond length outliers are listed below:

Mol	Chain	Res	Type	Atoms	Z	Observed(Å)	Ideal(Å)
1	A	28	GLU	CD-OE2	6.62	1.32	1.25
1	A	197	GLU	CD-OE2	6.36	1.32	1.25
1	A	171	GLU	CD-OE2	6.30	1.32	1.25
1	A	104	GLU	CD-OE2	6.15	1.32	1.25
1	A	212	GLU	CD-OE2	6.07	1.32	1.25
1	A	64	GLU	CD-OE2	6.00	1.32	1.25
1	A	168	GLU	CD-OE2	5.86	1.32	1.25
1	A	177	GLU	CD-OE2	5.85	1.32	1.25
1	A	279	GLU	CD-OE2	5.82	1.32	1.25
1	A	121	GLU	CD-OE2	5.68	1.31	1.25
1	A	37	GLU	CD-OE2	5.45	1.31	1.25
1	A	239	GLU	CD-OE2	5.43	1.31	1.25
1	A	48	GLU	CD-OE2	5.42	1.31	1.25
1	A	110	GLU	CD-OE2	5.29	1.31	1.25
1	A	63	GLU	CD-OE2	5.25	1.31	1.25
1	A	272	GLU	CD-OE2	5.16	1.31	1.25
1	A	147	GLU	CD-OE2	5.09	1.31	1.25

All (25) bond angle outliers are listed below:

Mol	Chain	Res	Type	Atoms	Z	Observed(°)	Ideal(°)
1	A	275	ARG	NE-CZ-NH2	-9.51	115.54	120.30
1	A	101	ASP	CB-CG-OD2	-7.94	111.15	118.30
1	A	271	ASP	CB-CG-OD2	-7.59	111.47	118.30
1	A	209	ASP	CB-CG-OD1	6.91	124.52	118.30

*Continued on next page...*

*Continued from previous page...*

Mol	Chain	Res	Type	Atoms	Z	Observed(°)	Ideal(°)
1	A	209	ASP	CB-CG-OD2	-6.79	112.19	118.30
1	A	271	ASP	CB-CG-OD1	6.59	124.23	118.30
1	A	115	ASP	CB-CG-OD2	-6.36	112.58	118.30
1	A	35	ASP	CB-CG-OD2	-6.35	112.59	118.30
1	A	163	ASP	CB-CG-OD2	-6.31	112.62	118.30
1	A	157	ASP	CB-CG-OD2	-6.20	112.72	118.30
1	A	35	ASP	CB-CG-OD1	5.95	123.66	118.30
1	A	176	ASP	CB-CG-OD2	-5.86	113.03	118.30
1	A	38	ASP	CB-CG-OD2	-5.76	113.12	118.30
1	A	214	ASP	CB-CG-OD2	-5.72	113.16	118.30
1	A	275	ARG	CD-NE-CZ	5.67	131.53	123.60
1	A	163	ASP	CB-CG-OD1	5.64	123.38	118.30
1	A	38	ASP	CB-CG-OD1	5.46	123.21	118.30
1	A	50	ASP	CB-CG-OD2	-5.38	113.46	118.30
1	A	252	ASP	CB-CG-OD2	-5.38	113.46	118.30
1	A	157	ASP	CB-CG-OD1	5.33	123.10	118.30
1	A	176	ASP	CB-CG-OD1	5.29	123.06	118.30
1	A	101	ASP	CB-CG-OD1	5.29	123.06	118.30
1	A	131	ASP	CB-CG-OD2	-5.18	113.64	118.30
1	A	50	ASP	CB-CG-OD1	5.07	122.87	118.30
1	A	120	ARG	NE-CZ-NH1	5.06	122.83	120.30

There are no chirality outliers.

There are no planarity outliers.

## 5.2 Too-close contacts ⓘ

In the following table, the Non-H and H(model) columns list the number of non-hydrogen atoms and hydrogen atoms in the chain respectively. The H(added) column lists the number of hydrogen atoms added and optimized by MolProbity. The Clashes column lists the number of clashes within the asymmetric unit, whereas Symm-Clashes lists symmetry related clashes.

Mol	Chain	Non-H	H(model)	H(added)	Clashes	Symm-Clashes
1	A	2025	0	2033	41	0
2	A	23	0	18	1	0
3	A	150	0	0	6	0
All	All	2198	0	2051	41	0

The all-atom clashscore is defined as the number of clashes found per 1000 atoms (including hydrogen atoms). The all-atom clashscore for this structure is 10.

All (41) close contacts within the same asymmetric unit are listed below, sorted by their clash



magnitude.

Atom-1	Atom-2	Interatomic distance (Å)	Clash overlap (Å)
1:A:26:HIS:CE1	1:A:28:GLU:HG2	2.19	0.77
1:A:269:THR:OG1	1:A:272:GLU:HG3	1.85	0.74
1:A:26:HIS:HE1	1:A:28:GLU:HG2	1.53	0.71
1:A:219:PRO:O	1:A:275:ARG:NH2	2.26	0.68
1:A:102:LEU:HD11	1:A:113:LEU:HD21	1.74	0.67
1:A:274:ASN:HB3	1:A:275:ARG:HH21	1.60	0.66
1:A:240:ARG:NH1	3:A:484:HOH:O	2.31	0.64
1:A:237:ALA:O	2:A:523:PNM:H171	1.99	0.61
1:A:191:ARG:NH1	3:A:511:HOH:O	2.33	0.61
1:A:26:HIS:N	1:A:58:GLU:OE2	2.34	0.61
1:A:274:ASN:HB3	1:A:275:ARG:NH2	2.14	0.61
1:A:215:LYS:O	1:A:215:LYS:HG3	2.01	0.60
1:A:275:ARG:N	1:A:275:ARG:HE	2.01	0.59
1:A:146:LYS:HE2	3:A:418:HOH:O	2.01	0.59
1:A:167:PRO:HG3	3:A:372:HOH:O	2.03	0.57
1:A:35:ASP:O	1:A:39:GLN:HG2	2.05	0.56
1:A:37:GLU:OE1	1:A:60:PHE:HE2	1.89	0.56
1:A:275:ARG:HA	1:A:275:ARG:NE	2.22	0.55
1:A:111:LYS:HE2	1:A:112:HIS:NE2	2.22	0.54
1:A:275:ARG:CA	1:A:275:ARG:HE	2.22	0.52
1:A:165:TRP:CD1	1:A:165:TRP:N	2.78	0.51
1:A:106:SER:HB3	1:A:109:THR:OG1	2.10	0.51
1:A:47:ILE:HG22	1:A:260:VAL:HB	1.94	0.50
1:A:286:LYS:HZ2	1:A:286:LYS:HB3	1.78	0.48
1:A:46:TYR:HD1	1:A:261:ILE:HG12	1.79	0.47
1:A:240:ARG:NE	3:A:432:HOH:O	2.30	0.47
1:A:28:GLU:CB	1:A:287:HIS:CE1	2.98	0.46
1:A:275:ARG:NE	1:A:275:ARG:CA	2.79	0.46
1:A:141:THR:HG23	3:A:389:HOH:O	2.16	0.45
1:A:269:THR:HG23	1:A:272:GLU:OE1	2.16	0.45
1:A:28:GLU:HG3	1:A:287:HIS:CE1	2.52	0.44
1:A:94:ARG:HD3	1:A:115:ASP:O	2.17	0.44
1:A:194:LEU:HD22	1:A:208:ILE:HG13	2.00	0.44
1:A:111:LYS:HG2	1:A:112:HIS:CD2	2.53	0.43
1:A:28:GLU:HB2	1:A:287:HIS:CE1	2.53	0.43
1:A:129:MET:SD	1:A:215:LYS:CD	3.08	0.41
1:A:268:ALA:HB1	1:A:272:GLU:HB2	2.02	0.41
1:A:161:ARG:O	1:A:179:ASP:HA	2.20	0.41
1:A:108:VAL:O	1:A:111:LYS:HG2	2.22	0.40
1:A:128:THR:HA	1:A:214:ASP:HA	2.02	0.40
1:A:249:LEU:HD23	1:A:249:LEU:H	1.86	0.40

There are no symmetry-related clashes.

## 5.3 Torsion angles [i](#)

### 5.3.1 Protein backbone [i](#)

In the following table, the Percentiles column shows the percent Ramachandran outliers of the chain as a percentile score with respect to all X-ray entries followed by that with respect to entries of similar resolution.

The Analysed column shows the number of residues for which the backbone conformation was analysed, and the total number of residues.

Mol	Chain	Analysed	Favoured	Allowed	Outliers	Percentiles
1	A	261/263 (99%)	256 (98%)	4 (2%)	1 (0%)	38 20

All (1) Ramachandran outliers are listed below:

Mol	Chain	Res	Type
1	A	220	LEU

### 5.3.2 Protein sidechains [i](#)

In the following table, the Percentiles column shows the percent sidechain outliers of the chain as a percentile score with respect to all X-ray entries followed by that with respect to entries of similar resolution.

The Analysed column shows the number of residues for which the sidechain conformation was analysed, and the total number of residues.

Mol	Chain	Analysed	Rotameric	Outliers	Percentiles
1	A	217/217 (100%)	203 (94%)	14 (6%)	20 5

All (14) residues with a non-rotameric sidechain are listed below:

Mol	Chain	Res	Type
1	A	39	GLN
1	A	49	LEU
1	A	83	ARG
1	A	90	GLN
1	A	111	LYS
1	A	130	SER
1	A	141	THR

*Continued on next page...*

*Continued from previous page...*

Mol	Chain	Res	Type
1	A	146	LYS
1	A	198	LEU
1	A	215	LYS
1	A	270	MET
1	A	275	ARG
1	A	284	LEU
1	A	286	LYS

Some sidechains can be flipped to improve hydrogen bonding and reduce clashes. There are no such sidechains identified.

### 5.3.3 RNA [i](#)

There are no RNA molecules in this entry.

## 5.4 Non-standard residues in protein, DNA, RNA chains [i](#)

There are no non-standard protein/DNA/RNA residues in this entry.

## 5.5 Carbohydrates [i](#)

There are no carbohydrates in this entry.

## 5.6 Ligand geometry [i](#)

1 ligand is modelled in this entry.

In the following table, the Counts columns list the number of bonds (or angles) for which Mogul statistics could be retrieved, the number of bonds (or angles) that are observed in the model and the number of bonds (or angles) that are defined in the Chemical Component Dictionary. The Link column lists molecule types, if any, to which the group is linked. The Z score for a bond length (or angle) is the number of standard deviations the observed value is removed from the expected value. A bond length (or angle) with  $|Z| > 2$  is considered an outlier worth inspection. RMSZ is the root-mean-square of all Z scores of the bond lengths (or angles).

Mol	Type	Chain	Res	Link	Bond lengths			Bond angles		
					Counts	RMSZ	# $ Z  > 2$	Counts	RMSZ	# $ Z  > 2$
2	PNM	A	523	1	17,24,24	1.16	2 (11%)	22,34,34	1.15	3 (13%)

In the following table, the Chirals column lists the number of chiral outliers, the number of chiral

centers analysed, the number of these observed in the model and the number defined in the Chemical Component Dictionary. Similar counts are reported in the Torsion and Rings columns. '-' means no outliers of that kind were identified.

Mol	Type	Chain	Res	Link	Chirals	Torsions	Rings
2	PNM	A	523	1	-	0/8/33/33	0/2/2/2

All (2) bond length outliers are listed below:

Mol	Chain	Res	Type	Atoms	Z	Observed(Å)	Ideal(Å)
2	A	523	PNM	C6-N14	-2.15	1.43	1.46
2	A	523	PNM	C6-C7	3.29	1.54	1.50

All (3) bond angle outliers are listed below:

Mol	Chain	Res	Type	Atoms	Z	Observed(°)	Ideal(°)
2	A	523	PNM	C17-C15-N14	-2.03	112.67	115.89
2	A	523	PNM	O8-C7-C6	2.01	130.59	125.22
2	A	523	PNM	C5-C6-N14	3.52	118.30	109.80

There are no chirality outliers.

There are no torsion outliers.

There are no ring outliers.

1 monomer is involved in 1 short contact:

Mol	Chain	Res	Type	Clashes	Symm-Clashes
2	A	523	PNM	1	0

## 5.7 Other polymers [i](#)

There are no such residues in this entry.

## 5.8 Polymer linkage issues [i](#)

There are no chain breaks in this entry.

## 6 Fit of model and data

### 6.1 Protein, DNA and RNA chains

EDS was not executed - this section is therefore empty.

### 6.2 Non-standard residues in protein, DNA, RNA chains

EDS was not executed - this section is therefore empty.

### 6.3 Carbohydrates

EDS was not executed - this section is therefore empty.

### 6.4 Ligands

EDS was not executed - this section is therefore empty.

### 6.5 Other polymers

EDS was not executed - this section is therefore empty.