



# Full wwPDB X-ray Structure Validation Report ⓘ

Oct 10, 2017 – 05:15 AM EDT

PDB ID : 2FT2  
Title : Human Cathepsin S with Inhibitor CRA-29728  
Authors : Somoza, J.R.  
Deposited on : unknown  
Resolution : 1.70 Å(reported)

This is a Full wwPDB X-ray Structure Validation Report for a publicly released PDB entry.

We welcome your comments at [validation@mail.wwpdb.org](mailto:validation@mail.wwpdb.org)

A user guide is available at

<http://wwpdb.org/validation/2016/XrayValidationReportHelp>

with specific help available everywhere you see the ⓘ symbol.

---

The following versions of software and data (see [references ⓘ](#)) were used in the production of this report:

MolProbity : 4.02b-467  
Mogul : 1.7.2 (RC1), CSD as538be (2017)  
Xtriage (Phenix) : 1.9-1692  
EDS : rb-20030345  
Percentile statistics : 20161228.v01 (using entries in the PDB archive December 28th 2016)  
Refmac : 5.8.0135  
CCP4 : 6.5.0  
Ideal geometry (proteins) : Engh & Huber (2001)  
Ideal geometry (DNA, RNA) : Parkinson et al. (1996)  
Validation Pipeline (wwPDB-VP) : rb-20030345

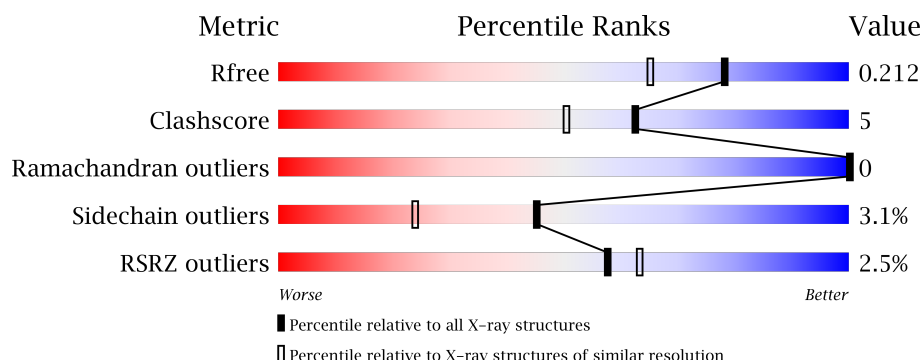
# 1 Overall quality at a glance

The following experimental techniques were used to determine the structure:

*X-RAY DIFFRACTION*

The reported resolution of this entry is 1.70 Å.

Percentile scores (ranging between 0-100) for global validation metrics of the entry are shown in the following graphic. The table shows the number of entries on which the scores are based.



Metric	Whole archive (#Entries)	Similar resolution (#Entries, resolution range(Å))
$R_{free}$	100719	3453 (1.70-1.70)
Clashscore	112137	3876 (1.70-1.70)
Ramachandran outliers	110173	3815 (1.70-1.70)
Sidechain outliers	110143	3815 (1.70-1.70)
RSRZ outliers	101464	3491 (1.70-1.70)

The table below summarises the geometric issues observed across the polymeric chains and their fit to the electron density. The red, orange, yellow and green segments on the lower bar indicate the fraction of residues that contain outliers for  $\geq 3$ , 2, 1 and 0 types of geometric quality criteria. A grey segment represents the fraction of residues that are not modelled. The numeric value for each fraction is indicated below the corresponding segment, with a dot representing fractions  $\leq 5\%$ . The upper red bar (where present) indicates the fraction of residues that have poor fit to the electron density. The numeric value is given above the bar.

Mol	Chain	Length	Quality of chain
1	A	225	<div> <div style="width: 100%; height: 10px; background: linear-gradient(to right, red 1%, orange 1%, yellow 1%, green 86%, grey 8%);"></div> <div style="display: flex; justify-content: space-between; width: 100%;"> <span>1%</span> <span>86%</span> <span>8%</span> </div> </div>
1	B	225	<div> <div style="width: 100%; height: 10px; background: linear-gradient(to right, red 4%, orange 1%, yellow 1%, green 88%, grey 8%);"></div> <div style="display: flex; justify-content: space-between; width: 100%;"> <span>4%</span> <span>88%</span> <span>8%</span> </div> </div>

## 2 Entry composition

There are 3 unique types of molecules in this entry. The entry contains 3686 atoms, of which 0 are hydrogens and 0 are deuteriums.

In the tables below, the ZeroOcc column contains the number of atoms modelled with zero occupancy, the AltConf column contains the number of residues with at least one atom in alternate conformation and the Trace column contains the number of residues modelled with at most 2 atoms.

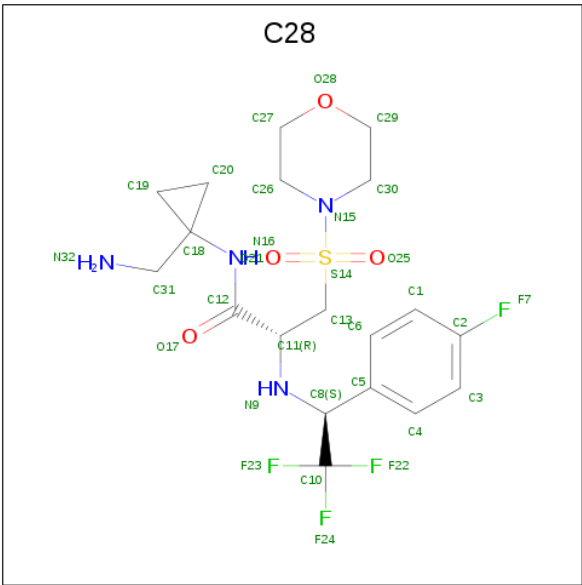
- Molecule 1 is a protein called cathepsin S.

Mol	Chain	Residues	Atoms					ZeroOcc	AltConf	Trace
1	A	217	Total	C	N	O	S	0	0	0
			1669	1052	282	323	12			
1	B	218	Total	C	N	O	S	0	0	0
			1681	1061	284	324	12			

There are 14 discrepancies between the modelled and reference sequences:

Chain	Residue	Modelled	Actual	Comment	Reference
A	219	GLY	-	CLONING ARTIFACT	UNP P25774
A	220	HIS	-	CLONING ARTIFACT	UNP P25774
A	221	HIS	-	CLONING ARTIFACT	UNP P25774
A	222	HIS	-	CLONING ARTIFACT	UNP P25774
A	223	HIS	-	CLONING ARTIFACT	UNP P25774
A	224	HIS	-	CLONING ARTIFACT	UNP P25774
A	225	HIS	-	CLONING ARTIFACT	UNP P25774
B	219	GLY	-	CLONING ARTIFACT	UNP P25774
B	220	HIS	-	CLONING ARTIFACT	UNP P25774
B	221	HIS	-	CLONING ARTIFACT	UNP P25774
B	222	HIS	-	CLONING ARTIFACT	UNP P25774
B	223	HIS	-	CLONING ARTIFACT	UNP P25774
B	224	HIS	-	CLONING ARTIFACT	UNP P25774
B	225	HIS	-	CLONING ARTIFACT	UNP P25774

- Molecule 2 is N-[1-(AMINOMETHYL)CYCLOPROPYL]-3-(MORPHOLIN-4-YLSULFONYL)-N 2 -[(1S)-2,2,2-TRIFLUORO-1-(4-FLUOROPHENYL)ETHYL]-L-ALANINAMIDE (three-letter code: C28) (formula: C<sub>19</sub>H<sub>26</sub>F<sub>4</sub>N<sub>4</sub>O<sub>4</sub>S).



Mol	Chain	Residues	Atoms						ZeroOcc	AltConf
2	A	1	Total	C	F	N	O	S	0	0
			32	19	4	4	4	1		
2	B	1	Total	C	F	N	O	S	0	0
			32	19	4	4	4	1		

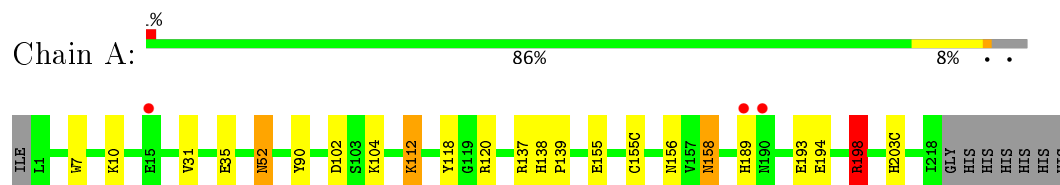
- Molecule 3 is water.

Mol	Chain	Residues	Atoms		ZeroOcc	AltConf
3	A	137	Total	O	0	0
			137	137		
3	B	135	Total	O	0	0
			135	135		

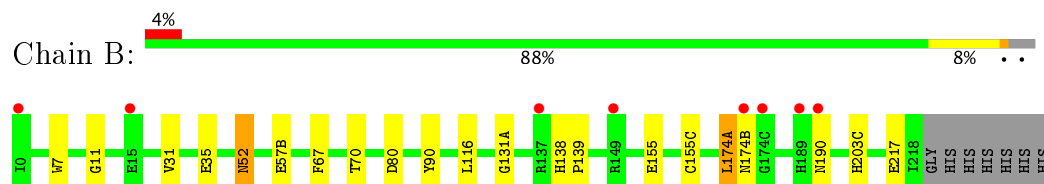
### 3 Residue-property plots [i](#)

These plots are drawn for all protein, RNA and DNA chains in the entry. The first graphic for a chain summarises the proportions of the various outlier classes displayed in the second graphic. The second graphic shows the sequence view annotated by issues in geometry and electron density. Residues are color-coded according to the number of geometric quality criteria for which they contain at least one outlier: green = 0, yellow = 1, orange = 2 and red = 3 or more. A red dot above a residue indicates a poor fit to the electron density ( $RSRZ > 2$ ). Stretches of 2 or more consecutive residues without any outlier are shown as a green connector. Residues present in the sample, but not in the model, are shown in grey.

- Molecule 1: cathepsin S



- Molecule 1: cathepsin S



## 4 Data and refinement statistics

Property	Value	Source
Space group	P 41 2 2	Depositor
Cell constants a, b, c, $\alpha$ , $\beta$ , $\gamma$	85.76 Å 85.76 Å 151.15 Å 90.00° 90.00° 90.00°	Depositor
Resolution (Å)	43.44 – 1.70 43.44 – 1.70	Depositor EDS
% Data completeness (in resolution range)	95.4 (43.44-1.70) 95.3 (43.44-1.70)	Depositor EDS
$R_{merge}$	0.09	Depositor
$R_{sym}$	(Not available)	Depositor
$\langle I/\sigma(I) \rangle$ <sup>1</sup>	1.58 (at 1.70 Å)	Xtriage
Refinement program	CNS	Depositor
R, $R_{free}$	0.201 , 0.215 0.198 , 0.212	Depositor DCC
$R_{free}$ test set	6059 reflections (11.26%)	DCC
Wilson B-factor (Å <sup>2</sup> )	12.0	Xtriage
Anisotropy	0.142	Xtriage
Bulk solvent $k_{sol}$ (e/Å <sup>3</sup> ), $B_{sol}$ (Å <sup>2</sup> )	0.40 , 45.6	EDS
L-test for twinning <sup>2</sup>	$\langle  L  \rangle = 0.49$ , $\langle L^2 \rangle = 0.32$	Xtriage
Estimated twinning fraction	No twinning to report.	Xtriage
$F_o, F_c$ correlation	0.94	EDS
Total number of atoms	3686	wwPDB-VP
Average B, all atoms (Å <sup>2</sup> )	13.0	wwPDB-VP

Xtriage's analysis on translational NCS is as follows: *The largest off-origin peak in the Patterson function is 5.20% of the height of the origin peak. No significant pseudotranslation is detected.*

<sup>1</sup>Intensities estimated from amplitudes.

<sup>2</sup>Theoretical values of  $\langle |L| \rangle$ ,  $\langle L^2 \rangle$  for acentric reflections are 0.5, 0.333 respectively for untwinned datasets, and 0.375, 0.2 for perfectly twinned datasets.

## 5 Model quality [i](#)

### 5.1 Standard geometry [i](#)

Bond lengths and bond angles in the following residue types are not validated in this section: C28

The Z score for a bond length (or angle) is the number of standard deviations the observed value is removed from the expected value. A bond length (or angle) with  $|Z| > 5$  is considered an outlier worth inspection. RMSZ is the root-mean-square of all Z scores of the bond lengths (or angles).

Mol	Chain	Bond lengths		Bond angles	
		RMSZ	$\# Z  > 5$	RMSZ	$\# Z  > 5$
1	A	0.35	0/1711	0.63	1/2319 (0.0%)
1	B	0.34	0/1723	0.59	0/2334
All	All	0.34	0/3434	0.61	1/4653 (0.0%)

There are no bond length outliers.

All (1) bond angle outliers are listed below:

Mol	Chain	Res	Type	Atoms	Z	Observed( $^{\circ}$ )	Ideal( $^{\circ}$ )
1	A	198	ARG	CD-NE-CZ	6.17	132.24	123.60

There are no chirality outliers.

There are no planarity outliers.

### 5.2 Too-close contacts [i](#)

In the following table, the Non-H and H(model) columns list the number of non-hydrogen atoms and hydrogen atoms in the chain respectively. The H(added) column lists the number of hydrogen atoms added and optimized by MolProbity. The Clashes column lists the number of clashes within the asymmetric unit, whereas Symm-Clashes lists symmetry related clashes.

Mol	Chain	Non-H	H(model)	H(added)	Clashes	Symm-Clashes
1	A	1669	0	1562	18	0
1	B	1681	0	1584	17	0
2	A	32	0	24	0	0
2	B	32	0	24	1	0
3	A	137	0	0	1	0
3	B	135	0	0	3	0
All	All	3686	0	3194	33	0

The all-atom clashscore is defined as the number of clashes found per 1000 atoms (including hydrogen atoms). The all-atom clashscore for this structure is 5.

All (33) close contacts within the same asymmetric unit are listed below, sorted by their clash magnitude.

Atom-1	Atom-2	Interatomic distance (Å)	Clash overlap (Å)
1:A:137:ARG:HG3	1:A:158:ASN:OD1	1.79	0.82
1:B:155:GLU:H	1:B:203(C):HIS:CE1	2.03	0.77
1:A:155:GLU:H	1:A:203(C):HIS:CE1	2.02	0.76
1:A:155:GLU:H	1:A:203(C):HIS:HE1	1.38	0.71
1:A:7:TRP:CE3	1:A:10:LYS:HD2	2.30	0.67
1:B:155:GLU:H	1:B:203(C):HIS:HE1	1.47	0.61
1:B:31:VAL:O	1:B:35:GLU:HG3	2.03	0.59
1:A:102:ASP:OD1	1:A:104:LYS:HG2	2.03	0.58
1:B:174(A):LEU:CD2	1:B:174(B):ASN:CG	2.76	0.55
1:A:120:ARG:HH21	1:B:80:ASP:CG	2.13	0.52
1:A:31:VAL:O	1:A:35:GLU:HG3	2.10	0.51
1:B:57(B):GLU:H	1:B:57(B):GLU:CD	2.15	0.50
1:B:7:TRP:CZ2	1:B:131(A):GLY:HA2	2.47	0.49
1:A:137:ARG:NH2	1:A:156:ASN:O	2.44	0.49
1:A:198:ARG:HH11	1:A:198:ARG:HG3	1.78	0.48
1:A:52:ASN:C	1:A:52:ASN:HD22	2.18	0.47
1:B:174(A):LEU:CD2	1:B:174(A):LEU:C	2.84	0.46
1:B:67:PHE:CE1	2:B:998:C28:H1	2.50	0.46
1:B:7:TRP:CE2	1:B:131(A):GLY:HA2	2.52	0.45
1:B:11:GLY:HA2	3:B:1054:HOH:O	2.16	0.45
1:A:137:ARG:NE	1:A:158:ASN:OD1	2.51	0.44
1:A:138:HIS:HA	1:A:139:PRO:HD3	1.92	0.44
1:B:52:ASN:HD22	1:B:52:ASN:C	2.20	0.44
1:A:112:LYS:HB2	1:A:112:LYS:NZ	2.34	0.43
1:A:120:ARG:HA	1:A:120:ARG:HD3	1.81	0.43
1:A:102:ASP:OD2	1:A:104:LYS:HE2	2.19	0.43
1:B:190:ASN:HB2	3:B:1122:HOH:O	2.18	0.42
1:A:120:ARG:NH2	3:A:1131:HOH:O	2.53	0.42
1:B:138:HIS:HA	1:B:139:PRO:HD3	1.92	0.42
1:B:116:LEU:N	1:B:116:LEU:HD12	2.35	0.41
1:A:118:TYR:CD1	1:B:70:THR:HG22	2.55	0.41
1:A:189:HIS:O	1:A:194:GLU:HA	2.20	0.41
1:B:217:GLU:HG3	3:B:1037:HOH:O	2.21	0.40

There are no symmetry-related clashes.



## 5.3 Torsion angles

### 5.3.1 Protein backbone

In the following table, the Percentiles column shows the percent Ramachandran outliers of the chain as a percentile score with respect to all X-ray entries followed by that with respect to entries of similar resolution.

The Analysed column shows the number of residues for which the backbone conformation was analysed, and the total number of residues.

Mol	Chain	Analysed	Favoured	Allowed	Outliers	Percentiles	
1	A	215/225 (96%)	209 (97%)	6 (3%)	0	100	100
1	B	216/225 (96%)	211 (98%)	5 (2%)	0	100	100
All	All	431/450 (96%)	420 (97%)	11 (3%)	0	100	100

There are no Ramachandran outliers to report.

### 5.3.2 Protein sidechains

In the following table, the Percentiles column shows the percent sidechain outliers of the chain as a percentile score with respect to all X-ray entries followed by that with respect to entries of similar resolution.

The Analysed column shows the number of residues for which the sidechain conformation was analysed, and the total number of residues.

Mol	Chain	Analysed	Rotameric	Outliers	Percentiles	
1	A	174/185 (94%)	167 (96%)	7 (4%)	36	15
1	B	176/185 (95%)	172 (98%)	4 (2%)	56	36
All	All	350/370 (95%)	339 (97%)	11 (3%)	45	24

All (11) residues with a non-rotameric sidechain are listed below:

Mol	Chain	Res	Type
1	A	52	ASN
1	A	90	TYR
1	A	112	LYS
1	A	155(C)	CYS
1	A	158	ASN
1	A	193	GLU
1	A	198	ARG
1	B	52	ASN

*Continued on next page...*

*Continued from previous page...*

Mol	Chain	Res	Type
1	B	90	TYR
1	B	155(C)	CYS
1	B	174(A)	LEU

Some sidechains can be flipped to improve hydrogen bonding and reduce clashes. All (6) such sidechains are listed below:

Mol	Chain	Res	Type
1	A	19	GLN
1	A	203(C)	HIS
1	B	97	GLN
1	B	155(E)	GLN
1	B	174(B)	ASN
1	B	203(C)	HIS

### 5.3.3 RNA [i](#)

There are no RNA molecules in this entry.

## 5.4 Non-standard residues in protein, DNA, RNA chains [i](#)

There are no non-standard protein/DNA/RNA residues in this entry.

## 5.5 Carbohydrates [i](#)

There are no carbohydrates in this entry.

## 5.6 Ligand geometry [i](#)

2 ligands are modelled in this entry.

In the following table, the Counts columns list the number of bonds (or angles) for which Mogul statistics could be retrieved, the number of bonds (or angles) that are observed in the model and the number of bonds (or angles) that are defined in the Chemical Component Dictionary. The Link column lists molecule types, if any, to which the group is linked. The Z score for a bond length (or angle) is the number of standard deviations the observed value is removed from the expected value. A bond length (or angle) with  $|Z| > 2$  is considered an outlier worth inspection. RMSZ is the root-mean-square of all Z scores of the bond lengths (or angles).

Mol	Type	Chain	Res	Link	Bond lengths			Bond angles		
					Counts	RMSZ	# Z  > 2	Counts	RMSZ	# Z  > 2
2	C28	A	999	1	32,34,34	2.85	12 (37%)	45,51,51	3.14	9 (20%)
2	C28	B	998	1	32,34,34	2.94	14 (43%)	45,51,51	3.13	9 (20%)

In the following table, the Chirals column lists the number of chiral outliers, the number of chiral centers analysed, the number of these observed in the model and the number defined in the Chemical Component Dictionary. Similar counts are reported in the Torsion and Rings columns. '-' means no outliers of that kind were identified.

Mol	Type	Chain	Res	Link	Chirals	Torsions	Rings
2	C28	A	999	1	-	0/34/49/49	0/2/3/3
2	C28	B	998	1	-	0/34/49/49	0/2/3/3

All (26) bond length outliers are listed below:

Mol	Chain	Res	Type	Atoms	Z	Observed(Å)	Ideal(Å)
2	A	999	C28	O21-S14	2.01	1.45	1.43
2	B	998	C28	C1-C6	2.13	1.42	1.38
2	B	998	C28	C3-C4	2.13	1.42	1.38
2	B	998	C28	C3-C2	2.21	1.41	1.37
2	A	999	C28	C1-C2	2.29	1.41	1.37
2	A	999	C28	C3-C2	2.32	1.41	1.37
2	B	998	C28	C1-C2	2.39	1.41	1.37
2	B	998	C28	O21-S14	2.40	1.46	1.43
2	A	999	C28	C4-C5	2.92	1.43	1.39
2	B	998	C28	C4-C5	3.00	1.43	1.39
2	A	999	C28	C30-N15	3.07	1.51	1.47
2	B	998	C28	C30-N15	3.09	1.51	1.47
2	A	999	C28	C19-C18	3.20	1.55	1.50
2	B	998	C28	C19-C18	3.27	1.55	1.50
2	B	998	C28	C8-N9	3.36	1.49	1.46
2	A	999	C28	C6-C5	3.47	1.44	1.39
2	B	998	C28	C6-C5	3.58	1.44	1.39
2	A	999	C28	C26-N15	3.67	1.51	1.47
2	A	999	C28	C8-N9	3.72	1.50	1.46
2	B	998	C28	C26-N15	3.94	1.52	1.47
2	A	999	C28	C10-C8	4.84	1.57	1.51
2	B	998	C28	C10-C8	5.37	1.57	1.51
2	A	999	C28	S14-N15	6.16	1.71	1.63
2	B	998	C28	S14-N15	6.69	1.72	1.63
2	B	998	C28	C20-C19	9.46	1.73	1.50
2	A	999	C28	C20-C19	9.61	1.74	1.50

All (18) bond angle outliers are listed below:

Mol	Chain	Res	Type	Atoms	Z	Observed(°)	Ideal(°)
2	A	999	C28	C20-C19-C18	-9.22	54.26	59.98
2	B	998	C28	C20-C19-C18	-9.19	54.28	59.98
2	A	999	C28	C19-C20-C18	-5.64	56.49	59.98
2	B	998	C28	C19-C20-C18	-5.39	56.64	59.98
2	A	999	C28	C19-C18-C31	-4.14	110.06	117.17
2	B	998	C28	C19-C18-C31	-4.06	110.20	117.17
2	B	998	C28	O17-C12-N16	-2.99	116.40	123.06
2	A	999	C28	O17-C12-N16	-2.95	116.51	123.06
2	A	999	C28	O25-S14-O21	2.50	121.46	118.96
2	B	998	C28	O25-S14-O21	2.65	121.61	118.96
2	A	999	C28	C11-C12-N16	3.22	123.97	116.83
2	B	998	C28	C11-C12-N16	3.31	124.19	116.83
2	A	999	C28	C18-N16-C12	8.80	137.67	125.78
2	B	998	C28	C18-N16-C12	8.95	137.87	125.78
2	B	998	C28	C20-C18-C19	8.97	69.08	60.03
2	A	999	C28	C20-C18-C19	9.14	69.25	60.03
2	A	999	C28	C20-C18-N16	9.86	128.71	115.62
2	B	998	C28	C20-C18-N16	9.98	128.88	115.62

There are no chirality outliers.

There are no torsion outliers.

There are no ring outliers.

1 monomer is involved in 1 short contact:

Mol	Chain	Res	Type	Clashes	Symm-Clashes
2	B	998	C28	1	0

## 5.7 Other polymers [i](#)

There are no such residues in this entry.

## 5.8 Polymer linkage issues [i](#)

There are no chain breaks in this entry.

## 6 Fit of model and data [i](#)

### 6.1 Protein, DNA and RNA chains [i](#)

In the following table, the column labelled ‘#RSRZ> 2’ contains the number (and percentage) of RSRZ outliers, followed by percent RSRZ outliers for the chain as percentile scores relative to all X-ray entries and entries of similar resolution. The OWAB column contains the minimum, median, 95<sup>th</sup> percentile and maximum values of the occupancy-weighted average B-factor per residue. The column labelled ‘Q< 0.9’ lists the number of (and percentage) of residues with an average occupancy less than 0.9.

Mol	Chain	Analysed	<RSRZ>	#RSRZ>2	OWAB(Å <sup>2</sup> )	Q<0.9
1	A	217/225 (96%)	0.10	3 (1%) 75 80	7, 11, 20, 27	0
1	B	218/225 (96%)	0.13	8 (3%) 42 48	7, 11, 21, 33	0
All	All	435/450 (96%)	0.11	11 (2%) 58 63	7, 11, 21, 33	0

All (11) RSRZ outliers are listed below:

Mol	Chain	Res	Type	RSRZ
1	B	0	ILE	8.3
1	B	174(B)	ASN	7.2
1	A	189	HIS	3.7
1	B	174(C)	GLY	3.4
1	B	137	ARG	3.2
1	B	190	ASN	3.0
1	B	189	HIS	2.8
1	B	15	GLU	2.4
1	A	15	GLU	2.3
1	A	190	ASN	2.1
1	B	149	ARG	2.0

### 6.2 Non-standard residues in protein, DNA, RNA chains [i](#)

There are no non-standard protein/DNA/RNA residues in this entry.

### 6.3 Carbohydrates [i](#)

There are no carbohydrates in this entry.

## 6.4 Ligands [i](#)

In the following table, the Atoms column lists the number of modelled atoms in the group and the number defined in the chemical component dictionary. LLDF column lists the quality of electron density of the group with respect to its neighbouring residues in protein, DNA or RNA chains. The B-factors column lists the minimum, median, 95<sup>th</sup> percentile and maximum values of B factors of atoms in the group. The column labelled 'Q< 0.9' lists the number of atoms with occupancy less than 0.9.

Mol	Type	Chain	Res	Atoms	RSCC	RSR	LLDF	B-factors( $\text{\AA}^2$ )	Q<0.9
2	C28	B	998	32/32	0.95	0.11	1.34	9,12,16,19	0
2	C28	A	999	32/32	0.96	0.10	0.27	9,11,14,15	0

## 6.5 Other polymers [i](#)

There are no such residues in this entry.