



Full wwPDB X-ray Structure Validation Report ⓘ

Feb 13, 2017 – 01:14 pm GMT

PDB ID : 2FWN
Title : Phosphorylation of an active site serine in a ThDP-dependent enzyme by phosphonate inactivation
Authors : Bera, A.K.; Hasson, M.S.
Deposited on : 2006-02-02
Resolution : 1.40 Å(reported)

This is a Full wwPDB X-ray Structure Validation Report for a publicly released PDB entry.

We welcome your comments at validation@mail.wwpdb.org

A user guide is available at

<http://wwpdb.org/validation/2016/XrayValidationReportHelp>

with specific help available everywhere you see the ⓘ symbol.

The following versions of software and data (see [references ⓘ](#)) were used in the production of this report:

MolProbity	:	4.02b-467
Mogul	:	1.7.2 (RC1), CSD as538be (2017)
Xtriage (Phenix)	:	1.9-1692
EDS	:	trunk28620
Percentile statistics	:	20161228.v01 (using entries in the PDB archive December 28th 2016)
Refmac	:	5.8.0135
CCP4	:	6.5.0
Ideal geometry (proteins)	:	Engh & Huber (2001)
Ideal geometry (DNA, RNA)	:	Parkinson et al. (1996)
Validation Pipeline (wwPDB-VP)	:	recalc28949

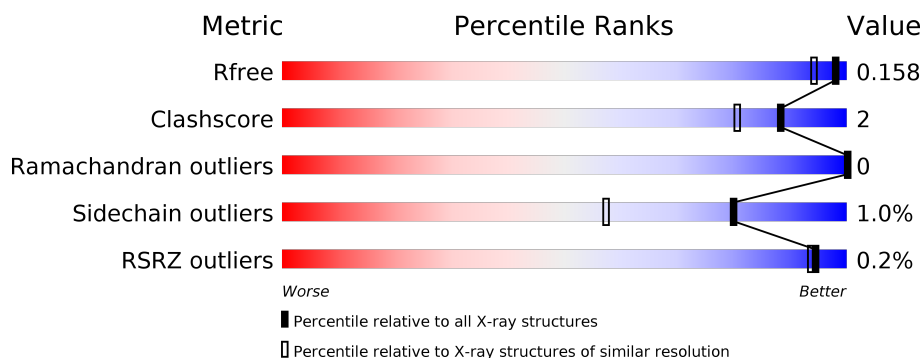
1 Overall quality at a glance

The following experimental techniques were used to determine the structure:

X-RAY DIFFRACTION


The reported resolution of this entry is 1.40 Å.

Percentile scores (ranging between 0-100) for global validation metrics of the entry are shown in the following graphic. The table shows the number of entries on which the scores are based.



Metric	Whole archive (#Entries)	Similar resolution (#Entries, resolution range(Å))
R_{free}	100719	1307 (1.40-1.40)
Clashscore	112137	1411 (1.40-1.40)
Ramachandran outliers	110173	1373 (1.40-1.40)
Sidechain outliers	110143	1372 (1.40-1.40)
RSRZ outliers	101464	1315 (1.40-1.40)

The table below summarises the geometric issues observed across the polymeric chains and their fit to the electron density. The red, orange, yellow and green segments on the lower bar indicate the fraction of residues that contain outliers for ≥ 3 , 2, 1 and 0 types of geometric quality criteria. A grey segment represents the fraction of residues that are not modelled. The numeric value for each fraction is indicated below the corresponding segment, with a dot representing fractions $\leq 5\%$. The upper red bar (where present) indicates the fraction of residues that have poor fit to the electron density. The numeric value is given above the bar.

Mol	Chain	Length	Quality of chain
1	A	528	 91% 8% ..

2 Entry composition

There are 5 unique types of molecules in this entry. The entry contains 4686 atoms, of which 0 are hydrogens and 0 are deuteriums.

In the tables below, the ZeroOcc column contains the number of atoms modelled with zero occupancy, the AltConf column contains the number of residues with at least one atom in alternate conformation and the Trace column contains the number of residues modelled with at most 2 atoms.

- Molecule 1 is a protein called Benzoylformate decarboxylase.

Mol	Chain	Residues	Atoms						ZeroOcc	AltConf	Trace
1	A	524	Total	C	N	O	P	S	0	9	0
			3949	2489	683	755	1	21			

There is a discrepancy between the modelled and reference sequences:

Chain	Residue	Modelled	Actual	Comment	Reference
A	26	SEP	SER	MODIFIED RESIDUE	UNP P20906

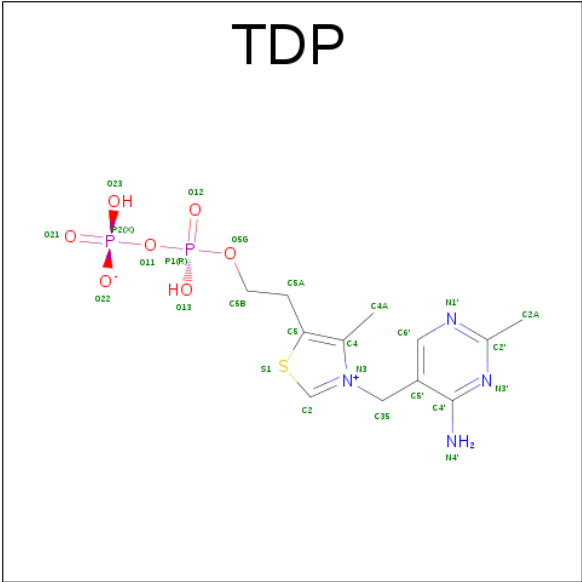
- Molecule 2 is MAGNESIUM ION (three-letter code: MG) (formula: Mg).

Mol	Chain	Residues	Atoms		ZeroOcc	AltConf
2	A	1	Total	Mg	0	0
			1	1		

- Molecule 3 is CALCIUM ION (three-letter code: CA) (formula: Ca).

Mol	Chain	Residues	Atoms		ZeroOcc	AltConf
3	A	3	Total	Ca	0	0
			3	3		

- Molecule 4 is THIAMIN DIPHOSPHATE (three-letter code: TDP) (formula: C₁₂H₁₈N₄O₇P₂S).



Mol	Chain	Residues	Atoms					ZeroOcc	AltConf	
4	A	1	Total	C	N	O	P	S	0	0
			26	12	4	7	2	1		

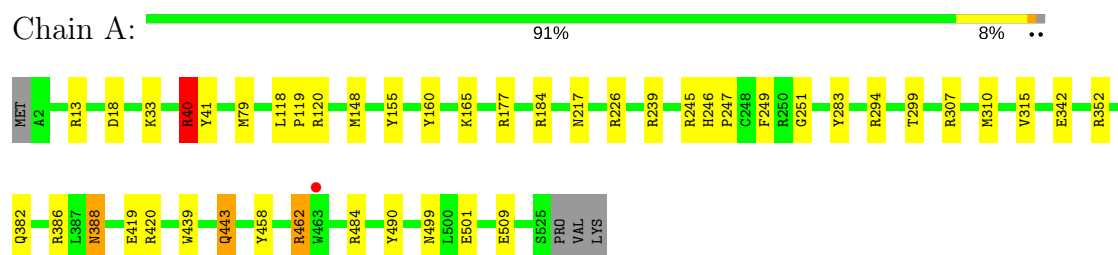
- Molecule 5 is water.

Mol	Chain	Residues	Atoms		ZeroOcc	AltConf
5	A	707	Total	O	0	0
			707	707		

3 Residue-property plots [i](#)

These plots are drawn for all protein, RNA and DNA chains in the entry. The first graphic for a chain summarises the proportions of the various outlier classes displayed in the second graphic. The second graphic shows the sequence view annotated by issues in geometry and electron density. Residues are color-coded according to the number of geometric quality criteria for which they contain at least one outlier: green = 0, yellow = 1, orange = 2 and red = 3 or more. A red dot above a residue indicates a poor fit to the electron density ($RSRZ > 2$). Stretches of 2 or more consecutive residues without any outlier are shown as a green connector. Residues present in the sample, but not in the model, are shown in grey.

- Molecule 1: Benzoylformate decarboxylase



4 Data and refinement statistics

Property	Value	Source
Space group	I 2 2 2	Depositor
Cell constants a, b, c, α , β , γ	81.17Å 95.04Å 137.36Å 90.00° 90.00° 90.00°	Depositor
Resolution (Å)	50.00 – 1.40 78.16 – 1.40	Depositor EDS
% Data completeness (in resolution range)	89.3 (50.00-1.40) 98.0 (78.16-1.40)	Depositor EDS
R_{merge}	0.07	Depositor
R_{sym}	(Not available)	Depositor
$\langle I/\sigma(I) \rangle$ ¹	6.09 (at 1.40Å)	Xtriage
Refinement program	SHELXL-97	Depositor
R, R_{free}	0.108 , (Not available) 0.150 , 0.158	Depositor DCC
R_{free} test set	10382 reflections (10.01%)	DCC
Wilson B-factor (Å ²)	8.6	Xtriage
Anisotropy	0.057	Xtriage
Bulk solvent k_{sol} (e/Å ³), B_{sol} (Å ²)	0.36 , 57.8	EDS
L-test for twinning ²	$\langle L \rangle = 0.50$, $\langle L^2 \rangle = 0.33$	Xtriage
Estimated twinning fraction	No twinning to report.	Xtriage
F_o, F_c correlation	0.96	EDS
Total number of atoms	4686	wwPDB-VP
Average B, all atoms (Å ²)	12.0	wwPDB-VP

Xtriage's analysis on translational NCS is as follows: *The largest off-origin peak in the Patterson function is 4.11% of the height of the origin peak. No significant pseudotranslation is detected.*

¹Intensities estimated from amplitudes.

²Theoretical values of $\langle |L| \rangle$, $\langle L^2 \rangle$ for acentric reflections are 0.5, 0.333 respectively for untwinned datasets, and 0.375, 0.2 for perfectly twinned datasets.

5 Model quality ⓘ

5.1 Standard geometry ⓘ

Bond lengths and bond angles in the following residue types are not validated in this section: CA, TDP, MG, SEP

The Z score for a bond length (or angle) is the number of standard deviations the observed value is removed from the expected value. A bond length (or angle) with $|Z| > 5$ is considered an outlier worth inspection. RMSZ is the root-mean-square of all Z scores of the bond lengths (or angles).

Mol	Chain	Bond lengths		Bond angles	
		RMSZ	$\# Z > 5$	RMSZ	$\# Z > 5$
1	A	0.64	0/4083	1.29	44/5576 (0.8%)

There are no bond length outliers.

All (44) bond angle outliers are listed below:

Mol	Chain	Res	Type	Atoms	Z	Observed(°)	Ideal(°)
1	A	120	ARG	NE-CZ-NH1	-26.05	107.28	120.30
1	A	420	ARG	NE-CZ-NH1	22.09	131.34	120.30
1	A	120	ARG	NE-CZ-NH2	20.37	130.49	120.30
1	A	386	ARG	NE-CZ-NH1	-14.54	113.03	120.30
1	A	420	ARG	NE-CZ-NH2	-13.83	113.39	120.30
1	A	294	ARG	NE-CZ-NH1	-10.78	114.91	120.30
1	A	352	ARG	NE-CZ-NH1	10.22	125.41	120.30
1	A	386	ARG	CD-NE-CZ	9.57	136.99	123.60
1	A	484	ARG	NE-CZ-NH2	-9.12	115.74	120.30
1	A	40	ARG	NE-CZ-NH2	-8.84	115.88	120.30
1	A	294	ARG	CD-NE-CZ	8.78	135.89	123.60
1	A	120	ARG	CD-NE-CZ	8.63	135.69	123.60
1	A	382	GLN	CG-CD-OE1	8.40	138.40	121.60
1	A	352	ARG	CD-NE-CZ	8.09	134.92	123.60
1	A	13	ARG	NE-CZ-NH1	7.97	124.29	120.30
1	A	239	ARG	NE-CZ-NH1	7.79	124.20	120.30
1	A	245	ARG	NE-CZ-NH2	-7.19	116.71	120.30
1	A	246	HIS	CG-ND1-CE1	7.09	118.13	108.20
1	A	462	ARG	NE-CZ-NH2	-7.03	116.78	120.30
1	A	226	ARG	NE-CZ-NH1	6.83	123.72	120.30
1	A	462	ARG	NE-CZ-NH1	6.79	123.69	120.30
1	A	382	GLN	OE1-CD-NE2	-6.77	106.33	121.90
1	A	247	PRO	O-C-N	-6.61	112.12	122.70
1	A	239	ARG	NE-CZ-NH2	-6.48	117.06	120.30

Continued on next page...

Continued from previous page...

Mol	Chain	Res	Type	Atoms	Z	Observed(°)	Ideal(°)
1	A	155	TYR	CB-CG-CD2	6.27	124.76	121.00
1	A	177	ARG	NE-CZ-NH1	6.11	123.35	120.30
1	A	443	GLN	CA-CB-CG	-6.08	100.03	113.40
1	A	148	MET	O-C-N	-6.05	113.02	122.70
1	A	13	ARG	CD-NE-CZ	5.97	131.96	123.60
1	A	184	ARG	NE-CZ-NH2	5.95	123.27	120.30
1	A	283	TYR	CB-CG-CD2	5.92	124.56	121.00
1	A	18	ASP	CB-CG-OD1	5.90	123.61	118.30
1	A	307	ARG	NE-CZ-NH2	-5.76	117.42	120.30
1	A	509	GLU	OE1-CD-OE2	5.75	130.21	123.30
1	A	352	ARG	NE-CZ-NH2	-5.70	117.45	120.30
1	A	458	TYR	CB-CG-CD1	5.59	124.35	121.00
1	A	462	ARG	CD-NE-CZ	5.49	131.28	123.60
1	A	160	TYR	CA-CB-CG	5.41	123.67	113.40
1	A	388	ASN	C-N-CA	5.38	135.16	121.70
1	A	148	MET	C-N-CA	5.37	135.12	121.70
1	A	41	TYR	CB-CG-CD2	5.28	124.17	121.00
1	A	490	TYR	CB-CG-CD2	5.19	124.11	121.00
1	A	386	ARG	NE-CZ-NH2	5.08	122.84	120.30
1	A	245	ARG	NH1-CZ-NH2	5.07	124.98	119.40

There are no chirality outliers.

There are no planarity outliers.

5.2 Too-close contacts ⓘ

In the following table, the Non-H and H(model) columns list the number of non-hydrogen atoms and hydrogen atoms in the chain respectively. The H(added) column lists the number of hydrogen atoms added and optimized by MolProbity. The Clashes column lists the number of clashes within the asymmetric unit, whereas Symm-Clashes lists symmetry related clashes.

Mol	Chain	Non-H	H(model)	H(added)	Clashes	Symm-Clashes
1	A	3949	0	3867	17	0
2	A	1	0	0	0	0
3	A	3	0	0	0	0
4	A	26	0	16	1	0
5	A	707	0	0	8	1
All	All	4686	0	3883	18	1

The all-atom clashscore is defined as the number of clashes found per 1000 atoms (including hydrogen atoms). The all-atom clashscore for this structure is 2.

All (18) close contacts within the same asymmetric unit are listed below, sorted by their clash magnitude.

Atom-1	Atom-2	Interatomic distance (Å)	Clash overlap (Å)
4:A:530:TDP:C2	4:A:530:TDP:H2	0.97	1.47
1:A:40:ARG:HD2	5:A:1063:HOH:O	1.53	1.09
1:A:501:GLU:OE2	5:A:1057:HOH:O	2.09	0.70
1:A:419:GLU:OE2	5:A:1097:HOH:O	2.16	0.63
1:A:342:GLU:HG2	5:A:1083:HOH:O	1.99	0.63
1:A:439:TRP:CZ2	1:A:443:GLN:HG3	2.38	0.59
1:A:499:ASN:OD1	1:A:501:GLU:HG3	2.06	0.55
1:A:79[B]:MET:HE1	1:A:118:LEU:O	2.10	0.51
1:A:439:TRP:CE2	1:A:443:GLN:HG3	2.45	0.51
1:A:79[B]:MET:HE3	1:A:119:PRO:HA	1.95	0.48
1:A:462:ARG:NH2	5:A:1094:HOH:O	2.48	0.47
1:A:165:LYS:NZ	5:A:817:HOH:O	2.46	0.46
1:A:79[A]:MET:CE	1:A:119:PRO:HA	2.45	0.46
1:A:249:PHE:CE2	1:A:251:GLY:HA2	2.51	0.46
1:A:501:GLU:HG2	5:A:656:HOH:O	2.17	0.44
1:A:33[B]:LYS:NZ	5:A:1011:HOH:O	2.50	0.44
1:A:79[A]:MET:SD	1:A:119:PRO:HA	2.59	0.42
1:A:299:THR:O	1:A:315:VAL:HA	2.22	0.40

All (1) symmetry-related close contacts are listed below. The label for Atom-2 includes the symmetry operator and encoded unit-cell translations to be applied.

Atom-1	Atom-2	Interatomic distance (Å)	Clash overlap (Å)
5:A:1170:HOH:O	5:A:1173:HOH:O[3_555]	2.13	0.07

5.3 Torsion angles [i](#)

5.3.1 Protein backbone [i](#)

In the following table, the Percentiles column shows the percent Ramachandran outliers of the chain as a percentile score with respect to all X-ray entries followed by that with respect to entries of similar resolution.

The Analysed column shows the number of residues for which the backbone conformation was analysed, and the total number of residues.

Mol	Chain	Analysed	Favoured	Allowed	Outliers	Percentiles	
1	A	530/528 (100%)	522 (98%)	8 (2%)	0	100	100

There are no Ramachandran outliers to report.

5.3.2 Protein sidechains ⓘ

In the following table, the Percentiles column shows the percent sidechain outliers of the chain as a percentile score with respect to all X-ray entries followed by that with respect to entries of similar resolution.

The Analysed column shows the number of residues for which the sidechain conformation was analysed, and the total number of residues.

Mol	Chain	Analysed	Rotameric	Outliers	Percentiles
1	A	418/413 (101%)	414 (99%)	4 (1%)	80 57

All (4) residues with a non-rotameric sidechain are listed below:

Mol	Chain	Res	Type
1	A	40	ARG
1	A	217	ASN
1	A	310	MET
1	A	388	ASN

Some sidechains can be flipped to improve hydrogen bonding and reduce clashes. All (2) such sidechains are listed below:

Mol	Chain	Res	Type
1	A	68	ASN
1	A	388	ASN

5.3.3 RNA ⓘ

There are no RNA molecules in this entry.

5.4 Non-standard residues in protein, DNA, RNA chains ⓘ

1 non-standard protein/DNA/RNA residue is modelled in this entry.

In the following table, the Counts columns list the number of bonds (or angles) for which Mogul statistics could be retrieved, the number of bonds (or angles) that are observed in the model and the number of bonds (or angles) that are defined in the chemical component dictionary. The Link column lists molecule types, if any, to which the group is linked. The Z score for a bond length (or angle) is the number of standard deviations the observed value is removed from the expected value. A bond length (or angle) with $|Z| > 2$ is considered an outlier worth inspection. RMSZ is the root-mean-square of all Z scores of the bond lengths (or angles).

Mol	Type	Chain	Res	Link	Bond lengths			Bond angles		
					Counts	RMSZ	# Z > 2	Counts	RMSZ	# Z > 2
1	SEP	A	26	1	9,9,10	1.07	1 (11%)	9,12,14	2.91	3 (33%)

In the following table, the Chirals column lists the number of chiral outliers, the number of chiral centers analysed, the number of these observed in the model and the number defined in the chemical component dictionary. Similar counts are reported in the Torsion and Rings columns. '-' means no outliers of that kind were identified.

Mol	Type	Chain	Res	Link	Chirals	Torsions	Rings
1	SEP	A	26	1	-	0/5/8/10	0/0/0/0

All (1) bond length outliers are listed below:

Mol	Chain	Res	Type	Atoms	Z	Observed(Å)	Ideal(Å)
1	A	26	SEP	CA-C	2.41	1.53	1.50

All (3) bond angle outliers are listed below:

Mol	Chain	Res	Type	Atoms	Z	Observed(°)	Ideal(°)
1	A	26	SEP	OG-P-O1P	-2.95	98.19	106.47
1	A	26	SEP	O2P-P-OG	-2.24	100.77	106.73
1	A	26	SEP	O3P-P-OG	7.50	126.70	106.73

There are no chirality outliers.

There are no torsion outliers.

There are no ring outliers.

No monomer is involved in short contacts.

5.5 Carbohydrates [i](#)

There are no carbohydrates in this entry.

5.6 Ligand geometry [i](#)

Of 5 ligands modelled in this entry, 4 are monoatomic - leaving 1 for Mogul analysis.

In the following table, the Counts columns list the number of bonds (or angles) for which Mogul statistics could be retrieved, the number of bonds (or angles) that are observed in the model and the number of bonds (or angles) that are defined in the chemical component dictionary. The Link column lists molecule types, if any, to which the group is linked. The Z score for a bond length

(or angle) is the number of standard deviations the observed value is removed from the expected value. A bond length (or angle) with $|Z| > 2$ is considered an outlier worth inspection. RMSZ is the root-mean-square of all Z scores of the bond lengths (or angles).

Mol	Type	Chain	Res	Link	Bond lengths			Bond angles		
					Counts	RMSZ	$\# Z > 2$	Counts	RMSZ	$\# Z > 2$
4	TDP	A	530	3	21,27,27	0.92	1 (4%)	25,40,40	1.41	5 (20%)

In the following table, the Chirals column lists the number of chiral outliers, the number of chiral centers analysed, the number of these observed in the model and the number defined in the chemical component dictionary. Similar counts are reported in the Torsion and Rings columns. '-' means no outliers of that kind were identified.

Mol	Type	Chain	Res	Link	Chirals	Torsions	Rings
4	TDP	A	530	3	-	0/16/17/17	0/2/2/2

All (1) bond length outliers are listed below:

Mol	Chain	Res	Type	Atoms	Z	Observed(Å)	Ideal(Å)
4	A	530	TDP	P2-O11	2.60	1.64	1.60

All (5) bond angle outliers are listed below:

Mol	Chain	Res	Type	Atoms	Z	Observed(°)	Ideal(°)
4	A	530	TDP	N1'-C2'-N3'	-2.55	121.18	125.59
4	A	530	TDP	C4A-C4-N3	-2.51	119.33	122.53
4	A	530	TDP	C2A-C2'-N1'	2.38	119.75	117.06
4	A	530	TDP	C5-C4-N3	2.75	113.08	107.57
4	A	530	TDP	C6'-N1'-C2'	2.96	121.00	115.88

There are no chirality outliers.

There are no torsion outliers.

There are no ring outliers.

1 monomer is involved in 1 short contact:

Mol	Chain	Res	Type	Clashes	Symm-Clashes
4	A	530	TDP	1	0

5.7 Other polymers ⓘ

There are no such residues in this entry.

5.8 Polymer linkage issues ⓘ

There are no chain breaks in this entry.

6 Fit of model and data

6.1 Protein, DNA and RNA chains

In the following table, the column labelled ‘#RSRZ> 2’ contains the number (and percentage) of RSRZ outliers, followed by percent RSRZ outliers for the chain as percentile scores relative to all X-ray entries and entries of similar resolution. The OWAB column contains the minimum, median, 95th percentile and maximum values of the occupancy-weighted average B-factor per residue. The column labelled ‘Q< 0.9’ lists the number of (and percentage) of residues with an average occupancy less than 0.9.

Mol	Chain	Analysed	<RSRZ>	#RSRZ>2	OWAB(Å ²)	Q<0.9
1	A	523/528 (99%)	-0.35	1 (0%) 94 93	5, 9, 17, 27	28 (5%)

All (1) RSRZ outliers are listed below:

Mol	Chain	Res	Type	RSRZ
1	A	463	TRP	2.2

6.2 Non-standard residues in protein, DNA, RNA chains

In the following table, the Atoms column lists the number of modelled atoms in the group and the number defined in the chemical component dictionary. LLDF column lists the quality of electron density of the group with respect to its neighbouring residues in protein, DNA or RNA chains. The B-factors column lists the minimum, median, 95th percentile and maximum values of B factors of atoms in the group. The column labelled ‘Q< 0.9’ lists the number of atoms with occupancy less than 0.9.

Mol	Type	Chain	Res	Atoms	RSCC	RSR	LLDF	B-factors(Å ²)	Q<0.9
1	SEP	A	26	10/11	0.97	0.07	-	6,9,22,27	0

6.3 Carbohydrates

There are no carbohydrates in this entry.

6.4 Ligands

In the following table, the Atoms column lists the number of modelled atoms in the group and the number defined in the chemical component dictionary. LLDF column lists the quality of electron density of the group with respect to its neighbouring residues in protein, DNA or RNA chains. The B-factors column lists the minimum, median, 95th percentile and maximum values of B factors

of atoms in the group. The column labelled 'Q < 0.9' lists the number of atoms with occupancy less than 0.9.

Mol	Type	Chain	Res	Atoms	RSCC	RSR	LLDF	B-factors(\AA^2)	Q<0.9
3	CA	A	534	1/1	0.98	0.11	1.86	9,9,9,9	1
2	MG	A	531	1/1	0.99	0.06	-0.65	6,6,6,6	1
4	TDP	A	530	26/26	0.99	0.05	-0.89	5,6,8,9	0
3	CA	A	532	1/1	1.00	0.04	-2.91	7,7,7,7	0
3	CA	A	533	1/1	0.88	0.17	-	11,11,11,11	1

6.5 Other polymers [i](#)

There are no such residues in this entry.