



# Full wwPDB X-ray Structure Validation Report ⓘ

Nov 6, 2017 – 04:50 PM EST

PDB ID : 4FWW  
Title : Crystal structure of the Sema-PSI extracellular domains of human RON receptor tyrosine kinase  
Authors : Chao, K.L.; Herzberg, O.  
Deposited on : unknown  
Resolution : 1.85 Å(reported)

This is a Full wwPDB X-ray Structure Validation Report for a publicly released PDB entry.

We welcome your comments at [validation@mail.wwpdb.org](mailto:validation@mail.wwpdb.org)

A user guide is available at

<http://wwpdb.org/validation/2016/XrayValidationReportHelp>

with specific help available everywhere you see the ⓘ symbol.

---

The following versions of software and data (see [references ⓘ](#)) were used in the production of this report:

MolProbity : 4.02b-467  
Mogul : 1.7.2 (RC1), CSD as538be (2017)  
Xtriage (Phenix) : 1.9-1692  
EDS : rb-20030345  
Percentile statistics : 20161228.v01 (using entries in the PDB archive December 28th 2016)  
Refmac : 5.8.0135  
CCP4 : 6.5.0  
Ideal geometry (proteins) : Engh & Huber (2001)  
Ideal geometry (DNA, RNA) : Parkinson et al. (1996)  
Validation Pipeline (wwPDB-VP) : rb-20030345

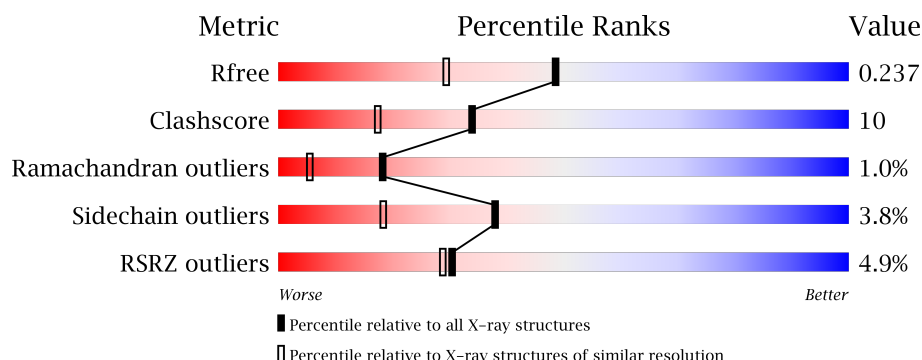
# 1 Overall quality at a glance

The following experimental techniques were used to determine the structure:

*X-RAY DIFFRACTION*

The reported resolution of this entry is 1.85 Å.

Percentile scores (ranging between 0-100) for global validation metrics of the entry are shown in the following graphic. The table shows the number of entries on which the scores are based.



Metric	Whole archive (#Entries)	Similar resolution (#Entries, resolution range(Å))
$R_{free}$	100719	1923 (1.86-1.86)
Clashscore	112137	2083 (1.86-1.86)
Ramachandran outliers	110173	2060 (1.86-1.86)
Sidechain outliers	110143	2060 (1.86-1.86)
RSRZ outliers	101464	1932 (1.86-1.86)

The table below summarises the geometric issues observed across the polymeric chains and their fit to the electron density. The red, orange, yellow and green segments on the lower bar indicate the fraction of residues that contain outliers for  $\geq 3$ , 2, 1 and 0 types of geometric quality criteria. A grey segment represents the fraction of residues that are not modelled. The numeric value for each fraction is indicated below the corresponding segment, with a dot representing fractions  $\leq 5\%$ . The upper red bar (where present) indicates the fraction of residues that have poor fit to the electron density. The numeric value is given above the bar.

Mol	Chain	Length	Quality of chain
1	A	527	

The following table lists non-polymeric compounds, carbohydrate monomers and non-standard residues in protein, DNA, RNA chains that are outliers for geometric or electron-density-fit criteria:

Mol	Type	Chain	Res	Chirality	Geometry	Clashes	Electron density
5	ACT	A	607	-	-	X	-
5	ACT	A	611	-	-	X	X

*Continued on next page...*

*Continued from previous page...*

Mol	Type	Chain	Res	Chirality	Geometry	Clashes	Electron density
6	GOL	A	612	-	-	-	X
6	GOL	A	613	-	-	-	X
7	EDO	A	616	-	-	X	X
7	EDO	A	617	-	-	-	X
7	EDO	A	618	-	-	-	X
7	EDO	A	619	-	-	-	X
8	PEG	A	620	-	-	-	X

## 2 Entry composition [i](#)

There are 9 unique types of molecules in this entry. The entry contains 4330 atoms, of which 0 are hydrogens and 0 are deuteriums.

In the tables below, the ZeroOcc column contains the number of atoms modelled with zero occupancy, the AltConf column contains the number of residues with at least one atom in alternate conformation and the Trace column contains the number of residues modelled with at most 2 atoms.

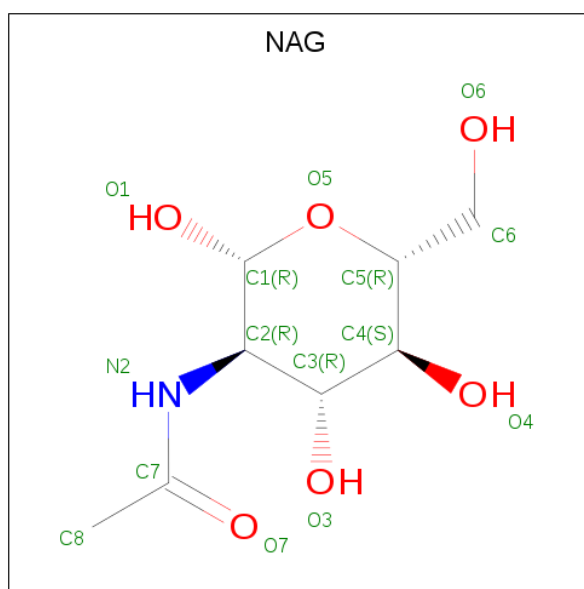
- Molecule 1 is a protein called Macrophage-stimulating protein receptor.

Mol	Chain	Residues	Atoms					ZeroOcc	AltConf	Trace
			Total	C	N	O	S			
1	A	513	3845	2430	672	716	27	40	0	0

There are 5 discrepancies between the modelled and reference sequences:

Chain	Residue	Modelled	Actual	Comment	Reference
A	306	LEU	ARG	CONFLICT	UNP Q04912
A	307	VAL	ARG	CONFLICT	UNP Q04912
A	308	PRO	ARG	CONFLICT	UNP Q04912
A	311	SER	ALA	CONFLICT	UNP Q04912
A	322	GLN	ARG	CONFLICT	UNP Q04912

- Molecule 2 is N-ACETYL-D-GLUCOSAMINE (three-letter code: NAG) (formula: C<sub>8</sub>H<sub>15</sub>NO<sub>6</sub>).



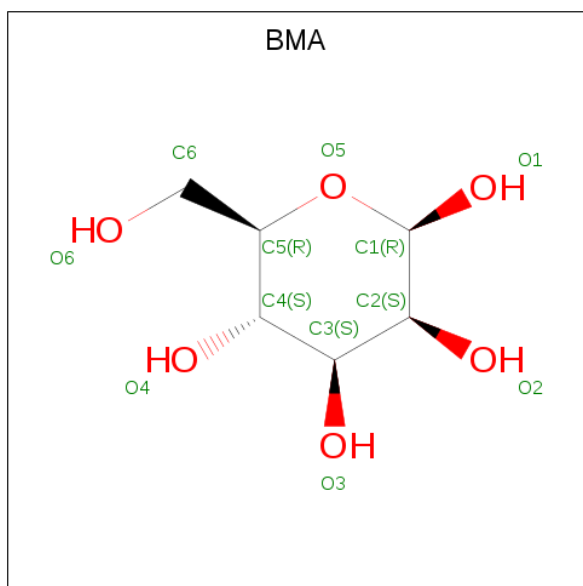
Mol	Chain	Residues	Atoms				ZeroOcc	AltConf
			Total	C	N	O		
2	A	1	14	8	1	5	0	0

*Continued on next page...*

*Continued from previous page...*

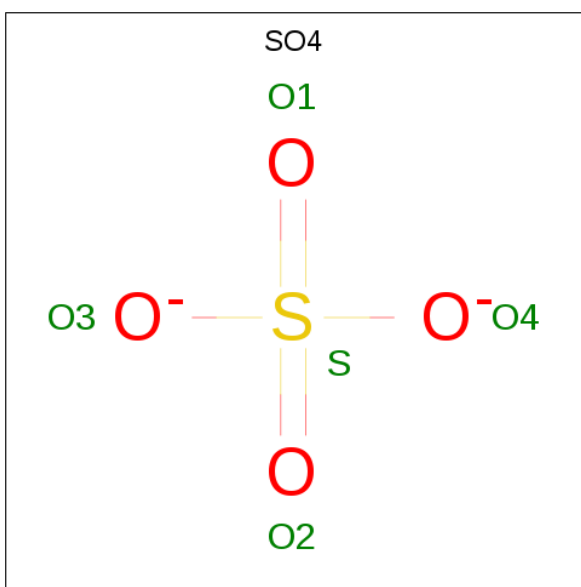
Mol	Chain	Residues	Atoms				ZeroOcc	AltConf
2	A	1	Total	C	N	O	0	0
			14	8	1	5		

- Molecule 3 is BETA-D-MANNOSE (three-letter code: BMA) (formula:  $C_6H_{12}O_6$ ).



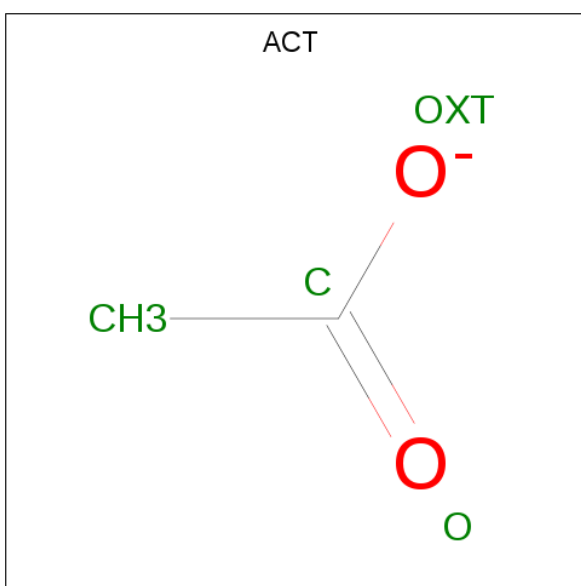
Mol	Chain	Residues	Atoms			ZeroOcc	AltConf
3	A	1	Total	C	O	0	0
			11	6	5		
3	A	1	Total	C	O	0	0
			11	6	5		

- Molecule 4 is SULFATE ION (three-letter code: SO4) (formula:  $O_4S$ ).



Mol	Chain	Residues	Atoms			ZeroOcc	AltConf
4	A	1	Total	O	S	0	0
			5	4	1		
4	A	1	Total	O	S	0	0
			5	4	1		

- Molecule 5 is ACETATE ION (three-letter code: ACT) (formula:  $C_2H_3O_2$ ).



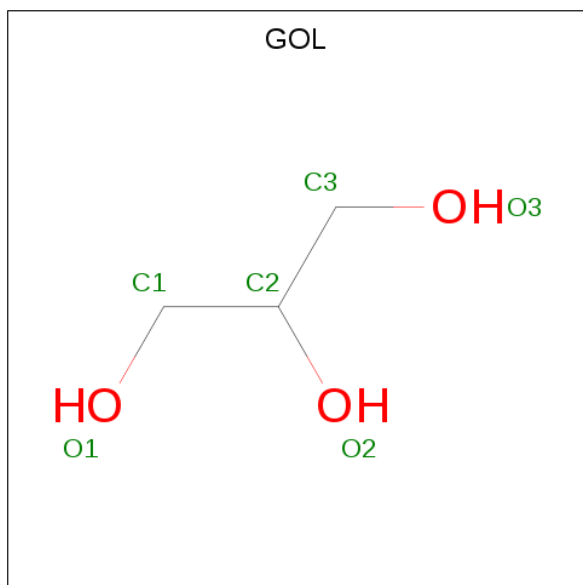
Mol	Chain	Residues	Atoms			ZeroOcc	AltConf
5	A	1	Total	C	O	0	0
			4	2	2		
5	A	1	Total	C	O	0	0
			4	2	2		

*Continued on next page...*

Continued from previous page...

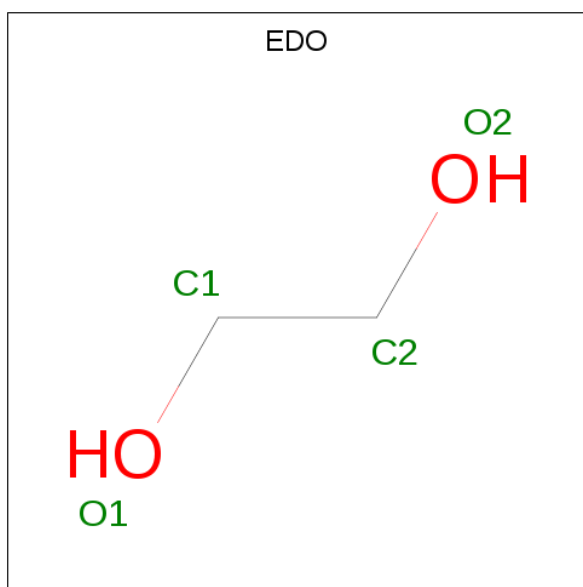
Mol	Chain	Residues	Atoms			ZeroOcc	AltConf
5	A	1	Total	C	O	0	0
			4	2	2		
5	A	1	Total	C	O	0	0
			4	2	2		
5	A	1	Total	C	O	0	0
			4	2	2		

- Molecule 6 is GLYCEROL (three-letter code: GOL) (formula:  $C_3H_8O_3$ ).



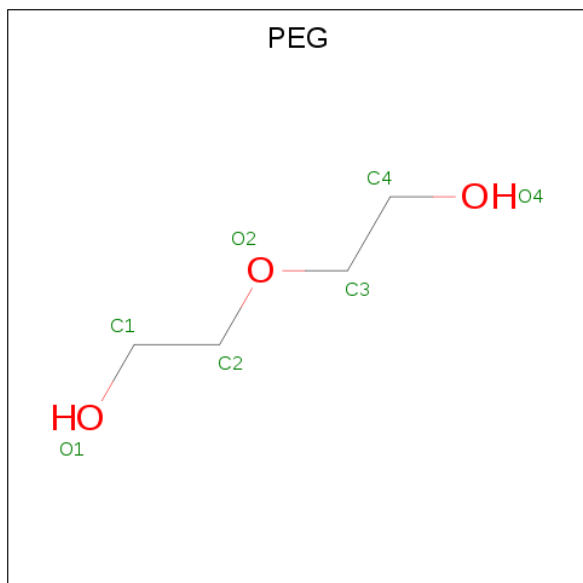
Mol	Chain	Residues	Atoms			ZeroOcc	AltConf
6	A	1	Total	C	O	0	0
			6	3	3		
6	A	1	Total	C	O	0	0
			6	3	3		
6	A	1	Total	C	O	0	0
			6	3	3		
6	A	1	Total	C	O	0	0
			6	3	3		

- Molecule 7 is 1,2-ETHANEDIOL (three-letter code: EDO) (formula:  $C_2H_6O_2$ ).



Mol	Chain	Residues	Atoms			ZeroOcc	AltConf
7	A	1	Total	C	O	0	0
			4	2	2		
7	A	1	Total	C	O	0	0
			4	2	2		
7	A	1	Total	C	O	0	0
			4	2	2		
7	A	1	Total	C	O	0	0
			4	2	2		

- Molecule 8 is DI(HYDROXYETHYL)ETHER (three-letter code: PEG) (formula:  $C_4H_{10}O_3$ ).





Mol	Chain	Residues	Atoms			ZeroOcc	AltConf
8	A	1	Total	C	O	0	0
			7	4	3		

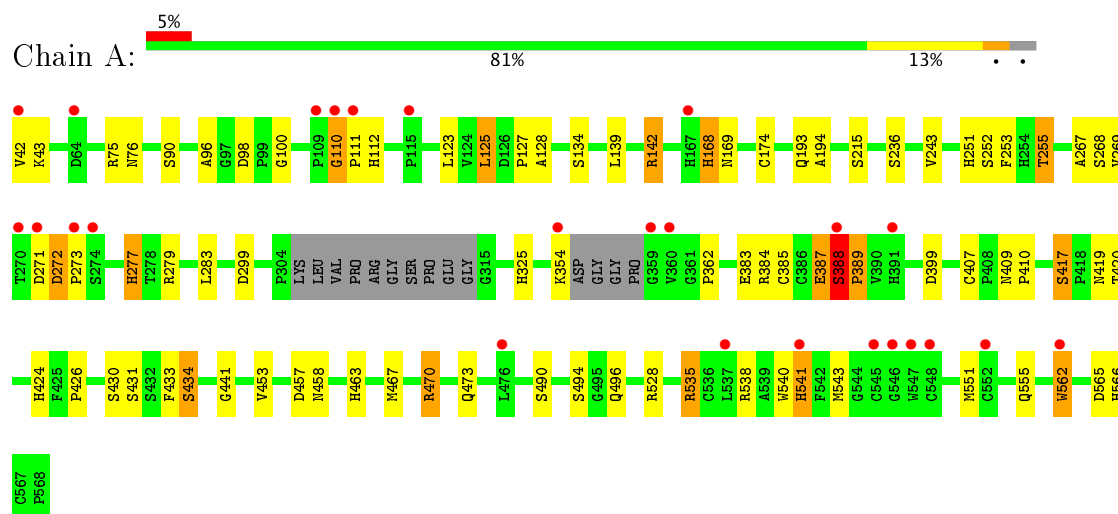
- Molecule 9 is water.

Mol	Chain	Residues	Atoms		ZeroOcc	AltConf
9	A	358	Total	O	0	0
			358	358		

### 3 Residue-property plots [i](#)

These plots are drawn for all protein, RNA and DNA chains in the entry. The first graphic for a chain summarises the proportions of the various outlier classes displayed in the second graphic. The second graphic shows the sequence view annotated by issues in geometry and electron density. Residues are color-coded according to the number of geometric quality criteria for which they contain at least one outlier: green = 0, yellow = 1, orange = 2 and red = 3 or more. A red dot above a residue indicates a poor fit to the electron density ( $\text{RSRZ} > 2$ ). Stretches of 2 or more consecutive residues without any outlier are shown as a green connector. Residues present in the sample, but not in the model, are shown in grey.

- Molecule 1: Macrophage-stimulating protein receptor



## 4 Data and refinement statistics

Property	Value	Source
Space group	C 1 2 1	Depositor
Cell constants a, b, c, $\alpha$ , $\beta$ , $\gamma$	106.40 Å   73.30 Å   87.90 Å 90.00°   97.40°   90.00°	Depositor
Resolution (Å)	19.32 – 1.85 19.32 – 1.85	Depositor EDS
% Data completeness (in resolution range)	90.0 (19.32-1.85) 90.0 (19.32-1.85)	Depositor EDS
$R_{merge}$	0.07	Depositor
$R_{sym}$	(Not available)	Depositor
$\langle I/\sigma(I) \rangle$ <sup>1</sup>	1.43 (at 1.85 Å)	Xtriage
Refinement program	REFMAC 5.6.0117	Depositor
R, $R_{free}$	0.191   ,   0.232 0.208   ,   0.237	Depositor DCC
$R_{free}$ test set	2628 reflections (5.38%)	DCC
Wilson B-factor (Å <sup>2</sup> )	26.3	Xtriage
Anisotropy	0.120	Xtriage
Bulk solvent $k_{sol}$ (e/Å <sup>3</sup> ), $B_{sol}$ (Å <sup>2</sup> )	0.36 , 45.8	EDS
L-test for twinning <sup>2</sup>	$\langle  L  \rangle = 0.49$ , $\langle L^2 \rangle = 0.32$	Xtriage
Estimated twinning fraction	No twinning to report.	Xtriage
$F_o, F_c$ correlation	0.96	EDS
Total number of atoms	4330	wwPDB-VP
Average B, all atoms (Å <sup>2</sup> )	51.0	wwPDB-VP

Xtriage's analysis on translational NCS is as follows: *The largest off-origin peak in the Patterson function is 7.23% of the height of the origin peak. No significant pseudotranslation is detected.*

<sup>1</sup>Intensities estimated from amplitudes.

<sup>2</sup>Theoretical values of  $\langle |L| \rangle$ ,  $\langle L^2 \rangle$  for acentric reflections are 0.5, 0.333 respectively for untwinned datasets, and 0.375, 0.2 for perfectly twinned datasets.

## 5 Model quality [i](#)

### 5.1 Standard geometry [i](#)

Bond lengths and bond angles in the following residue types are not validated in this section: GOL, BMA, NAG, EDO, SO4, ACT, PEG

The Z score for a bond length (or angle) is the number of standard deviations the observed value is removed from the expected value. A bond length (or angle) with  $|Z| > 5$  is considered an outlier worth inspection. RMSZ is the root-mean-square of all Z scores of the bond lengths (or angles).

Mol	Chain	Bond lengths		Bond angles	
		RMSZ	$\# Z  > 5$	RMSZ	$\# Z  > 5$
1	A	0.78	4/3945 (0.1%)	0.80	10/5384 (0.2%)

Chiral center outliers are detected by calculating the chiral volume of a chiral center and verifying if the center is modelled as a planar moiety or with the opposite hand. A planarity outlier is detected by checking planarity of atoms in a peptide group, atoms in a mainchain group or atoms of a sidechain that are expected to be planar.

Mol	Chain	#Chirality outliers	#Planarity outliers
1	A	0	2

All (4) bond length outliers are listed below:

Mol	Chain	Res	Type	Atoms	Z	Observed(Å)	Ideal(Å)
1	A	535	ARG	CB-CG	-19.08	1.01	1.52
1	A	538	ARG	CA-CB	-11.27	1.29	1.53
1	A	42	VAL	CB-CG2	-7.34	1.37	1.52
1	A	562	TRP	CD2-CE2	5.17	1.47	1.41

All (10) bond angle outliers are listed below:

Mol	Chain	Res	Type	Atoms	Z	Observed(°)	Ideal(°)
1	A	528	ARG	CB-CG-CD	10.29	138.37	111.60
1	A	538	ARG	CB-CA-C	9.38	129.17	110.40
1	A	535	ARG	CA-CB-CG	8.16	131.35	113.40
1	A	42	VAL	CA-CB-CG2	8.05	122.97	110.90
1	A	528	ARG	CG-CD-NE	-7.47	96.11	111.80
1	A	538	ARG	CA-CB-CG	5.74	126.02	113.40
1	A	43	LYS	CB-CG-CD	5.54	125.99	111.60
1	A	125	LEU	CA-CB-CG	-5.52	102.60	115.30
1	A	470	ARG	NE-CZ-NH2	-5.30	117.65	120.30

*Continued on next page...*

*Continued from previous page...*

Mol	Chain	Res	Type	Atoms	Z	Observed(°)	Ideal(°)
1	A	399	ASP	CB-CG-OD1	5.14	122.93	118.30

There are no chirality outliers.

All (2) planarity outliers are listed below:

Mol	Chain	Res	Type	Group
1	A	387	GLU	Peptide
1	A	388	SER	Peptide

## 5.2 Too-close contacts ⓘ

In the following table, the Non-H and H(model) columns list the number of non-hydrogen atoms and hydrogen atoms in the chain respectively. The H(added) column lists the number of hydrogen atoms added and optimized by MolProbity. The Clashes column lists the number of clashes within the asymmetric unit, whereas Symm-Clashes lists symmetry related clashes.

Mol	Chain	Non-H	H(model)	H(added)	Clashes	Symm-Clashes
1	A	3845	0	3726	68	0
2	A	28	0	24	3	0
3	A	22	0	19	1	0
4	A	10	0	0	0	0
5	A	20	0	15	7	0
6	A	24	0	32	1	1
7	A	16	0	24	7	0
8	A	7	0	10	1	0
9	A	358	0	0	15	1
All	All	4330	0	3850	74	1

The all-atom clashscore is defined as the number of clashes found per 1000 atoms (including hydrogen atoms). The all-atom clashscore for this structure is 10.

All (74) close contacts within the same asymmetric unit are listed below, sorted by their clash magnitude.

Atom-1	Atom-2	Interatomic distance (Å)	Clash overlap (Å)
1:A:388:SER:HB3	1:A:389:PRO:CD	1.75	1.15
1:A:388:SER:HB3	1:A:389:PRO:HD2	1.21	1.12
1:A:139:LEU:HB3	1:A:142:ARG:HD3	1.32	1.11
7:A:616:EDO:H22	9:A:1178:HOH:O	1.74	0.88
1:A:388:SER:CB	1:A:389:PRO:CD	2.53	0.85

*Continued on next page...*

*Continued from previous page...*

Atom-1	Atom-2	Interatomic distance (Å)	Clash overlap (Å)
1:A:384:ARG:NH1	1:A:430:SER:OG	2.09	0.85
1:A:277:HIS:CE1	1:A:279:ARG:HE	1.93	0.85
1:A:127:PRO:HD2	9:A:1295:HOH:O	1.76	0.83
1:A:139:LEU:O	1:A:142:ARG:HD2	1.83	0.79
1:A:354:LYS:HD3	1:A:354:LYS:N	1.98	0.78
1:A:470:ARG:HH12	2:A:601:NAG:H61	1.47	0.78
1:A:277:HIS:HE1	1:A:279:ARG:HE	1.34	0.76
1:A:433:PHE:HD1	9:A:1245:HOH:O	1.68	0.76
1:A:123:LEU:H	5:A:611:ACT:H2	1.53	0.74
1:A:325:HIS:HD2	1:A:453:VAL:H	1.36	0.72
5:A:607:ACT:CH3	9:A:1326:HOH:O	2.39	0.69
1:A:431:SER:HB2	9:A:1188:HOH:O	1.92	0.69
1:A:273:PRO:HB3	9:A:1297:HOH:O	1.92	0.68
1:A:325:HIS:CD2	1:A:453:VAL:H	2.11	0.66
1:A:215:SER:H	1:A:236:SER:HB3	1.60	0.66
1:A:215:SER:HB2	1:A:236:SER:HA	1.77	0.66
1:A:272:ASP:OD1	1:A:272:ASP:N	2.28	0.65
1:A:387:GLU:HG3	1:A:388:SER:HB2	1.76	0.65
1:A:362:PRO:HG3	1:A:441:GLY:HA2	1.78	0.65
1:A:388:SER:CB	1:A:389:PRO:HD2	2.13	0.63
1:A:112:HIS:HB3	9:A:1152:HOH:O	1.98	0.62
5:A:607:ACT:H1	9:A:1326:HOH:O	1.99	0.62
1:A:383:GLU:OE1	1:A:387:GLU:OE1	2.19	0.60
2:A:601:NAG:H2	9:A:1298:HOH:O	2.01	0.59
1:A:252:SER:H	7:A:616:EDO:C1	2.18	0.56
1:A:388:SER:HA	9:A:1005:HOH:O	2.05	0.55
1:A:433:PHE:CD1	9:A:1245:HOH:O	2.50	0.55
1:A:426:PRO:HD3	8:A:620:PEG:H21	1.89	0.54
1:A:75:ARG:HG2	1:A:76:ASN:ND2	2.23	0.54
1:A:139:LEU:HB3	1:A:142:ARG:CD	2.23	0.53
1:A:252:SER:H	7:A:616:EDO:H12	1.73	0.53
1:A:251:HIS:HA	7:A:616:EDO:H12	1.91	0.52
1:A:139:LEU:O	1:A:142:ARG:CD	2.57	0.52
1:A:253:PHE:CD1	1:A:255:THR:HG22	2.45	0.52
5:A:611:ACT:H1	9:A:1124:HOH:O	2.09	0.51
1:A:194:ALA:HA	6:A:615:GOL:H31	1.92	0.51
1:A:299:ASP:OD2	1:A:434:SER:HB3	2.11	0.50
1:A:565:ASP:OD1	1:A:566:HIS:ND1	2.44	0.50
1:A:420:THR:HA	9:A:1019:HOH:O	2.12	0.48
1:A:268:SER:HB3	1:A:271:ASP:OD2	2.14	0.48
1:A:269:VAL:HG23	9:A:1104:HOH:O	2.13	0.47

*Continued on next page...*

*Continued from previous page...*

Atom-1	Atom-2	Interatomic distance (Å)	Clash overlap (Å)
1:A:128:ALA:HB1	7:A:618:EDO:H21	1.96	0.47
1:A:555:GLN:HA	1:A:562:TRP:CG	2.49	0.47
1:A:267:ALA:O	7:A:619:EDO:H22	2.16	0.46
1:A:385:CYS:O	1:A:407:CYS:HB3	2.15	0.46
1:A:354:LYS:H	1:A:354:LYS:HD3	1.76	0.46
1:A:169:ASN:OD1	1:A:174:CYS:SG	2.74	0.46
1:A:470:ARG:NH1	2:A:601:NAG:H61	2.25	0.46
1:A:283:LEU:N	1:A:283:LEU:HD12	2.32	0.45
1:A:299:ASP:O	1:A:434:SER:HA	2.17	0.44
1:A:463:HIS:ND1	1:A:473:GLN:NE2	2.65	0.43
1:A:271:ASP:O	1:A:272:ASP:C	2.55	0.43
1:A:417:SER:OG	1:A:419:ASN:OD1	2.36	0.43
1:A:215:SER:N	1:A:236:SER:HB3	2.31	0.42
1:A:252:SER:N	7:A:616:EDO:H12	2.34	0.42
1:A:494:SER:OG	1:A:496:GLN:HG3	2.19	0.42
3:A:603:BMA:H2	3:A:604:BMA:O2	2.20	0.42
1:A:98:ASP:OD1	1:A:100:GLY:N	2.38	0.42
1:A:409:ASN:HA	1:A:410:PRO:HD3	1.92	0.42
1:A:96:ALA:CB	1:A:139:LEU:HD13	2.49	0.41
1:A:424:HIS:HE1	5:A:607:ACT:H2	1.85	0.41
1:A:457:ASP:CG	1:A:458:ASN:H	2.18	0.41
1:A:96:ALA:HB1	1:A:139:LEU:CD1	2.50	0.41
1:A:424:HIS:CE1	5:A:607:ACT:H2	2.55	0.41
1:A:540:TRP:HB2	1:A:543:MET:HE2	2.02	0.41
1:A:134:SER:OG	5:A:610:ACT:H2	2.21	0.41
1:A:253:PHE:HD1	1:A:255:THR:HG22	1.85	0.40
1:A:541:HIS:HA	9:A:1230:HOH:O	2.21	0.40
1:A:110:GLY:HA3	1:A:111:PRO:HA	1.87	0.40

All (1) symmetry-related close contacts are listed below. The label for Atom-2 includes the symmetry operator and encoded unit-cell translations to be applied.

Atom-1	Atom-2	Interatomic distance (Å)	Clash overlap (Å)
6:A:613:GOL:O1	9:A:1238:HOH:O[2_556]	2.00	0.20

## 5.3 Torsion angles [i](#)

### 5.3.1 Protein backbone [i](#)

In the following table, the Percentiles column shows the percent Ramachandran outliers of the chain as a percentile score with respect to all X-ray entries followed by that with respect to entries of similar resolution.

The Analysed column shows the number of residues for which the backbone conformation was analysed, and the total number of residues.

Mol	Chain	Analysed	Favoured	Allowed	Outliers	Percentiles
1	A	507/527 (96%)	481 (95%)	21 (4%)	5 (1%)	18 5

All (5) Ramachandran outliers are listed below:

Mol	Chain	Res	Type
1	A	168	HIS
1	A	388	SER
1	A	541	HIS
1	A	110	GLY
1	A	389	PRO

### 5.3.2 Protein sidechains [i](#)

In the following table, the Percentiles column shows the percent sidechain outliers of the chain as a percentile score with respect to all X-ray entries followed by that with respect to entries of similar resolution.

The Analysed column shows the number of residues for which the sidechain conformation was analysed, and the total number of residues.

Mol	Chain	Analysed	Rotameric	Outliers	Percentiles
1	A	423/433 (98%)	407 (96%)	16 (4%)	38 18

All (16) residues with a non-rotameric sidechain are listed below:

Mol	Chain	Res	Type
1	A	90	SER
1	A	125	LEU
1	A	142	ARG
1	A	168	HIS
1	A	193	GLN
1	A	243	VAL

*Continued on next page...*



*Continued from previous page...*

Mol	Chain	Res	Type
1	A	255	THR
1	A	272	ASP
1	A	277	HIS
1	A	388	SER
1	A	417	SER
1	A	434	SER
1	A	467	MET
1	A	490	SER
1	A	535	ARG
1	A	551	MET

Some sidechains can be flipped to improve hydrogen bonding and reduce clashes. All (7) such sidechains are listed below:

Mol	Chain	Res	Type
1	A	112	HIS
1	A	168	HIS
1	A	277	HIS
1	A	322	GLN
1	A	325	HIS
1	A	473	GLN
1	A	564	GLN

### 5.3.3 RNA [i](#)

There are no RNA molecules in this entry.

## 5.4 Non-standard residues in protein, DNA, RNA chains [i](#)

There are no non-standard protein/DNA/RNA residues in this entry.

## 5.5 Carbohydrates [i](#)

There are no carbohydrates in this entry.

## 5.6 Ligand geometry [i](#)

20 ligands are modelled in this entry.

In the following table, the Counts columns list the number of bonds (or angles) for which Mogul statistics could be retrieved, the number of bonds (or angles) that are observed in the model and the number of bonds (or angles) that are defined in the Chemical Component Dictionary. The Link column lists molecule types, if any, to which the group is linked. The Z score for a bond length (or angle) is the number of standard deviations the observed value is removed from the expected value. A bond length (or angle) with  $|Z| > 2$  is considered an outlier worth inspection. RMSZ is the root-mean-square of all Z scores of the bond lengths (or angles).

Mol	Type	Chain	Res	Link	Bond lengths			Bond angles		
					Counts	RMSZ	$\# Z  > 2$	Counts	RMSZ	$\# Z  > 2$
2	NAG	A	601	1,2	14,14,15	0.86	1 (7%)	15,19,21	2.59	6 (40%)
2	NAG	A	602	3,2	14,14,15	0.47	0	15,19,21	1.74	2 (13%)
3	BMA	A	603	3,2	11,11,12	0.64	0	13,15,17	3.03	5 (38%)
3	BMA	A	604	3	11,11,12	0.93	0	13,15,17	1.89	4 (30%)
4	SO4	A	605	-	4,4,4	0.37	0	6,6,6	0.56	0
4	SO4	A	606	-	4,4,4	0.32	0	6,6,6	0.55	0
5	ACT	A	607	-	1,3,3	1.20	0	0,3,3	0.00	-
5	ACT	A	608	-	1,3,3	1.50	0	0,3,3	0.00	-
5	ACT	A	609	-	1,3,3	1.62	0	0,3,3	0.00	-
5	ACT	A	610	-	1,3,3	1.33	0	0,3,3	0.00	-
5	ACT	A	611	-	1,3,3	1.50	0	0,3,3	0.00	-
6	GOL	A	612	-	5,5,5	0.35	0	5,5,5	0.30	0
6	GOL	A	613	-	5,5,5	0.56	0	5,5,5	0.39	0
6	GOL	A	614	-	5,5,5	0.31	0	5,5,5	0.94	0
6	GOL	A	615	-	5,5,5	0.25	0	5,5,5	0.30	0
7	EDO	A	616	-	3,3,3	0.62	0	2,2,2	0.10	0
7	EDO	A	617	-	3,3,3	0.49	0	2,2,2	0.40	0
7	EDO	A	618	-	3,3,3	0.52	0	2,2,2	0.26	0
7	EDO	A	619	-	3,3,3	0.58	0	2,2,2	0.42	0
8	PEG	A	620	-	6,6,6	0.54	0	5,5,5	0.36	0

In the following table, the Chirals column lists the number of chiral outliers, the number of chiral centers analysed, the number of these observed in the model and the number defined in the Chemical Component Dictionary. Similar counts are reported in the Torsion and Rings columns. '-' means no outliers of that kind were identified.

Mol	Type	Chain	Res	Link	Chirals	Torsions	Rings
2	NAG	A	601	1,2	-	0/6/23/26	0/1/1/1
2	NAG	A	602	3,2	-	0/6/23/26	0/1/1/1
3	BMA	A	603	3,2	-	0/2/19/22	0/1/1/1
3	BMA	A	604	3	-	0/2/19/22	0/1/1/1
4	SO4	A	605	-	-	0/0/0/0	0/0/0/0
4	SO4	A	606	-	-	0/0/0/0	0/0/0/0
5	ACT	A	607	-	-	0/0/0/0	0/0/0/0

*Continued on next page...*

*Continued from previous page...*

Mol	Type	Chain	Res	Link	Chirals	Torsions	Rings
5	ACT	A	608	-	-	0/0/0/0	0/0/0/0
5	ACT	A	609	-	-	0/0/0/0	0/0/0/0
5	ACT	A	610	-	-	0/0/0/0	0/0/0/0
5	ACT	A	611	-	-	0/0/0/0	0/0/0/0
6	GOL	A	612	-	-	0/4/4/4	0/0/0/0
6	GOL	A	613	-	-	0/4/4/4	0/0/0/0
6	GOL	A	614	-	-	0/4/4/4	0/0/0/0
6	GOL	A	615	-	-	0/4/4/4	0/0/0/0
7	EDO	A	616	-	-	0/1/1/1	0/0/0/0
7	EDO	A	617	-	-	0/1/1/1	0/0/0/0
7	EDO	A	618	-	-	0/1/1/1	0/0/0/0
7	EDO	A	619	-	-	0/1/1/1	0/0/0/0
8	PEG	A	620	-	-	0/4/4/4	0/0/0/0

All (1) bond length outliers are listed below:

Mol	Chain	Res	Type	Atoms	Z	Observed(Å)	Ideal(Å)
2	A	601	NAG	O5-C1	-2.46	1.39	1.43

All (17) bond angle outliers are listed below:

Mol	Chain	Res	Type	Atoms	Z	Observed(°)	Ideal(°)
3	A	603	BMA	C1-C2-C3	-5.52	102.65	109.65
3	A	604	BMA	C1-O5-C5	-4.37	106.14	112.17
2	A	601	NAG	C6-C5-C4	-3.47	104.88	113.00
2	A	601	NAG	O6-C6-C5	-2.30	103.61	111.34
2	A	602	NAG	O7-C7-C8	-2.21	118.04	122.06
3	A	604	BMA	O3-C3-C2	2.06	113.77	110.02
2	A	601	NAG	C3-C4-C5	2.08	113.89	110.22
3	A	603	BMA	O2-C2-C3	2.15	114.39	110.17
2	A	601	NAG	C4-C3-C2	2.40	114.54	111.02
3	A	604	BMA	C2-C3-C4	2.48	115.20	110.88
3	A	604	BMA	C1-C2-C3	2.55	112.88	109.65
3	A	603	BMA	C1-O5-C5	3.98	117.66	112.17
3	A	603	BMA	C3-C4-C5	4.24	117.69	110.22
2	A	602	NAG	C2-N2-C7	5.20	130.53	122.94
2	A	601	NAG	O5-C1-C2	5.55	119.20	111.47
2	A	601	NAG	C1-O5-C5	5.71	120.04	112.17
3	A	603	BMA	O3-C3-C2	6.49	121.83	110.02

There are no chirality outliers.

There are no torsion outliers.

There are no ring outliers.

12 monomers are involved in 21 short contacts:

Mol	Chain	Res	Type	Clashes	Symm-Clashes
2	A	601	NAG	3	0
3	A	603	BMA	1	0
3	A	604	BMA	1	0
5	A	607	ACT	4	0
5	A	610	ACT	1	0
5	A	611	ACT	2	0
6	A	613	GOL	0	1
6	A	615	GOL	1	0
7	A	616	EDO	5	0
7	A	618	EDO	1	0
7	A	619	EDO	1	0
8	A	620	PEG	1	0

## 5.7 Other polymers [i](#)

There are no such residues in this entry.

## 5.8 Polymer linkage issues [i](#)

There are no chain breaks in this entry.

## 6 Fit of model and data ⓘ

### 6.1 Protein, DNA and RNA chains ⓘ

In the following table, the column labelled ‘#RSRZ> 2’ contains the number (and percentage) of RSRZ outliers, followed by percent RSRZ outliers for the chain as percentile scores relative to all X-ray entries and entries of similar resolution. The OWAB column contains the minimum, median, 95<sup>th</sup> percentile and maximum values of the occupancy-weighted average B-factor per residue. The column labelled ‘Q< 0.9’ lists the number of (and percentage) of residues with an average occupancy less than 0.9.

Mol	Chain	Analysed	<RSRZ>	#RSRZ>2	OWAB(Å <sup>2</sup> )	Q<0.9
1	A	513/527 (97%)	0.05	25 (4%) 30 29	20, 48, 97, 126	9 (1%)

All (25) RSRZ outliers are listed below:

Mol	Chain	Res	Type	RSRZ
1	A	111	PRO	4.8
1	A	360	VAL	4.3
1	A	167	HIS	3.7
1	A	273	PRO	3.4
1	A	541	HIS	3.4
1	A	548	CYS	3.4
1	A	546	GLY	3.2
1	A	271	ASP	3.1
1	A	109	PRO	3.0
1	A	354	LYS	2.9
1	A	547	TRP	2.8
1	A	552	CYS	2.8
1	A	64	ASP	2.8
1	A	110	GLY	2.7
1	A	391	HIS	2.7
1	A	359	GLY	2.6
1	A	476	LEU	2.6
1	A	274	SER	2.5
1	A	545	CYS	2.4
1	A	562	TRP	2.3
1	A	115	PRO	2.2
1	A	270	THR	2.2
1	A	388	SER	2.1
1	A	537	LEU	2.1
1	A	42	VAL	2.0

## 6.2 Non-standard residues in protein, DNA, RNA chains [i](#)

There are no non-standard protein/DNA/RNA residues in this entry.

## 6.3 Carbohydrates [i](#)

There are no carbohydrates in this entry.

## 6.4 Ligands [i](#)

In the following table, the Atoms column lists the number of modelled atoms in the group and the number defined in the chemical component dictionary. LLDF column lists the quality of electron density of the group with respect to its neighbouring residues in protein, DNA or RNA chains. The B-factors column lists the minimum, median, 95<sup>th</sup> percentile and maximum values of B factors of atoms in the group. The column labelled 'Q< 0.9' lists the number of atoms with occupancy less than 0.9.

Mol	Type	Chain	Res	Atoms	RSCC	RSR	LLDF	B-factors(Å <sup>2</sup> )	Q<0.9
8	PEG	A	620	7/7	0.94	0.19	12.95	36,41,48,52	0
7	EDO	A	617	4/4	0.98	0.23	9.79	27,39,44,54	0
6	GOL	A	612	6/6	0.93	0.20	6.14	37,46,51,58	0
5	ACT	A	611	4/4	0.93	0.20	5.06	44,55,59,61	0
7	EDO	A	618	4/4	0.90	0.20	4.87	57,58,59,62	0
7	EDO	A	616	4/4	0.86	0.19	4.38	34,40,42,45	0
7	EDO	A	619	4/4	0.87	0.19	4.29	48,49,53,55	0
6	GOL	A	613	6/6	0.91	0.11	2.41	36,43,45,45	0
6	GOL	A	614	6/6	0.89	0.14	1.50	39,41,44,49	0
2	NAG	A	601	14/15	0.91	0.17	1.26	29,40,57,60	0
2	NAG	A	602	14/15	0.94	0.15	1.21	35,41,54,55	0
5	ACT	A	609	4/4	0.87	0.17	1.17	47,57,60,60	0
6	GOL	A	615	6/6	0.93	0.13	0.87	33,45,54,60	0
5	ACT	A	610	4/4	0.94	0.12	0.47	33,43,48,49	0
4	SO4	A	605	5/5	0.99	0.06	-1.42	24,26,27,27	0
4	SO4	A	606	5/5	0.99	0.04	-1.93	32,33,37,39	0
5	ACT	A	608	4/4	0.92	0.22	-	42,56,59,61	0
3	BMA	A	603	11/12	0.85	0.36	-	59,73,79,82	0
5	ACT	A	607	4/4	0.99	0.08	-	23,23,23,25	4
3	BMA	A	604	11/12	0.87	0.32	-	60,69,79,82	0

## 6.5 Other polymers [i](#)

There are no such residues in this entry.