



Full wwPDB X-ray Structure Validation Report ⓘ

Feb 13, 2017 – 12:47 am GMT

PDB ID : 2FZB
Title : Human Aldose Reductase complexed with four tolrestat molecules at 1.5 Å resolution.
Authors : Steuber, H.; Zentgraf, M.; Gerlach, C.; Sotriffer, C.A.; Heine, A.; Klebe, G.
Deposited on : 2006-02-09
Resolution : 1.50 Å(reported)

This is a Full wwPDB X-ray Structure Validation Report for a publicly released PDB entry.

We welcome your comments at validation@mail.wwpdb.org

A user guide is available at

<http://wwpdb.org/validation/2016/XrayValidationReportHelp>

with specific help available everywhere you see the ⓘ symbol.

The following versions of software and data (see [references ⓘ](#)) were used in the production of this report:

MolProbity	:	4.02b-467
Mogul	:	1.7.2 (RC1), CSD as538be (2017)
Xtriage (Phenix)	:	1.9-1692
EDS	:	trunk28620
Percentile statistics	:	20161228.v01 (using entries in the PDB archive December 28th 2016)
Refmac	:	5.8.0135
CCP4	:	6.5.0
Ideal geometry (proteins)	:	Engh & Huber (2001)
Ideal geometry (DNA, RNA)	:	Parkinson et al. (1996)
Validation Pipeline (wwPDB-VP)	:	recalc28949

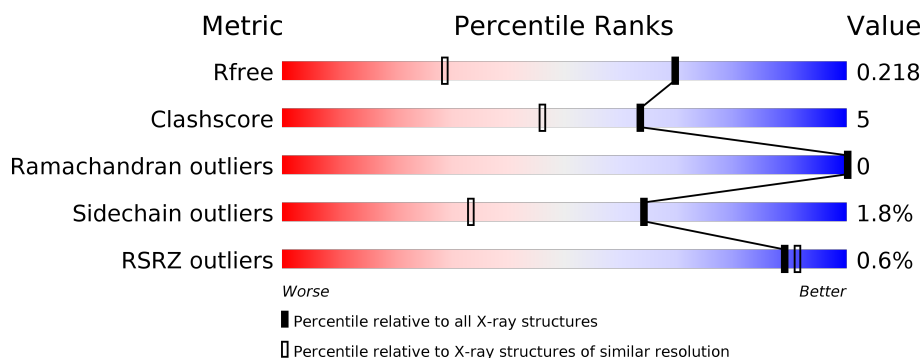
1 Overall quality at a glance

The following experimental techniques were used to determine the structure:

X-RAY DIFFRACTION

The reported resolution of this entry is 1.50 Å.

Percentile scores (ranging between 0-100) for global validation metrics of the entry are shown in the following graphic. The table shows the number of entries on which the scores are based.



Metric	Whole archive (#Entries)	Similar resolution (#Entries, resolution range(Å))
R_{free}	100719	2279 (1.50-1.50)
Clashscore	112137	2503 (1.50-1.50)
Ramachandran outliers	110173	2445 (1.50-1.50)
Sidechain outliers	110143	2443 (1.50-1.50)
RSRZ outliers	101464	2305 (1.50-1.50)

The table below summarises the geometric issues observed across the polymeric chains and their fit to the electron density. The red, orange, yellow and green segments on the lower bar indicate the fraction of residues that contain outliers for ≥ 3 , 2, 1 and 0 types of geometric quality criteria. A grey segment represents the fraction of residues that are not modelled. The numeric value for each fraction is indicated below the corresponding segment, with a dot representing fractions $\leq 5\%$. The upper red bar (where present) indicates the fraction of residues that have poor fit to the electron density. The numeric value is given above the bar.

Mol	Chain	Length	Quality of chain
1	A	316	

The following table lists non-polymeric compounds, carbohydrate monomers and non-standard residues in protein, DNA, RNA chains that are outliers for geometric or electron-density-fit criteria:

Mol	Type	Chain	Res	Chirality	Geometry	Clashes	Electron density
3	TOL	A	700	-	-	-	X
3	TOL	A	800	-	-	-	X

Continued on next page...

Continued from previous page...

Mol	Type	Chain	Res	Chirality	Geometry	Clashes	Electron density
3	TOL	A	900	-	-	-	X

2 Entry composition [i](#)

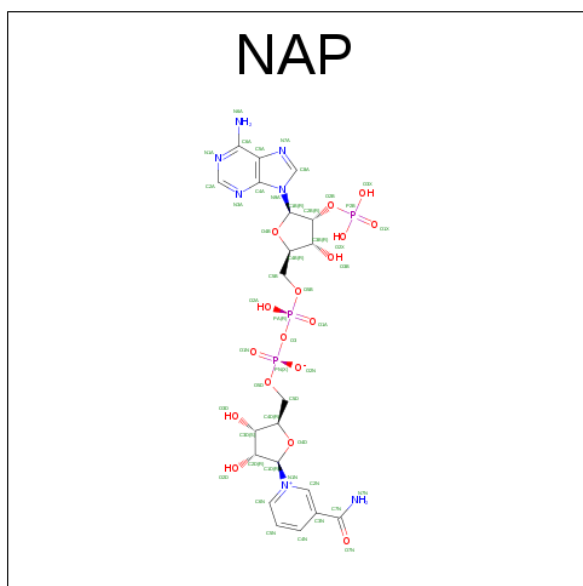
There are 4 unique types of molecules in this entry. The entry contains 3042 atoms, of which 0 are hydrogens and 0 are deuteriums.

In the tables below, the ZeroOcc column contains the number of atoms modelled with zero occupancy, the AltConf column contains the number of residues with at least one atom in alternate conformation and the Trace column contains the number of residues modelled with at most 2 atoms.

- Molecule 1 is a protein called aldose reductase.

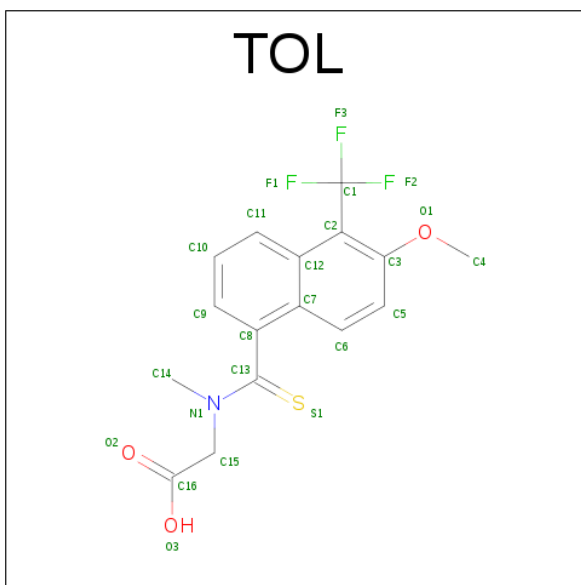
Mol	Chain	Residues	Atoms					ZeroOcc	AltConf	Trace
			Total	C	N	O	S			
1	A	316	2554	1641	428	472	13	0	7	0

- Molecule 2 is NADP NICOTINAMIDE-ADENINE-DINUCLEOTIDE PHOSPHATE (three-letter code: NAP) (formula: C₂₁H₂₈N₇O₁₇P₃).



Mol	Chain	Residues	Atoms					ZeroOcc	AltConf
			Total	C	N	O	P		
2	A	1	48	21	7	17	3	0	0

- Molecule 3 is TOLRESTAT (three-letter code: TOL) (formula: C₁₆H₁₄F₃NO₃S).



Mol	Chain	Residues	Atoms						ZeroOcc	AltConf
3	A	1	Total 24	C 16	F 3	N 1	O 3	S 1	0	0
3	A	1	Total 24	C 16	F 3	N 1	O 3	S 1	0	0
3	A	1	Total 24	C 16	F 3	N 1	O 3	S 1	0	0
3	A	1	Total 24	C 16	F 3	N 1	O 3	S 1	0	0

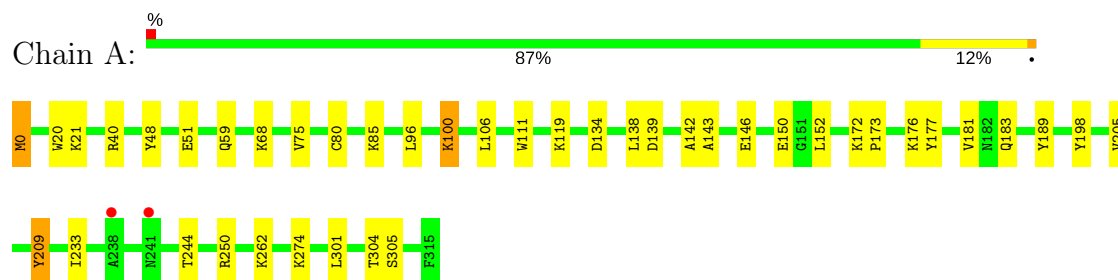
- Molecule 4 is water.

Mol	Chain	Residues	Atoms	ZeroOcc	AltConf
4	A	344	Total O 344 344	0	0

3 Residue-property plots [i](#)

These plots are drawn for all protein, RNA and DNA chains in the entry. The first graphic for a chain summarises the proportions of the various outlier classes displayed in the second graphic. The second graphic shows the sequence view annotated by issues in geometry and electron density. Residues are color-coded according to the number of geometric quality criteria for which they contain at least one outlier: green = 0, yellow = 1, orange = 2 and red = 3 or more. A red dot above a residue indicates a poor fit to the electron density ($RSRZ > 2$). Stretches of 2 or more consecutive residues without any outlier are shown as a green connector. Residues present in the sample, but not in the model, are shown in grey.

- Molecule 1: aldose reductase



4 Data and refinement statistics

Property	Value	Source
Space group	P 1 21 1	Depositor
Cell constants a, b, c, α , β , γ	49.20Å 68.10Å 46.73Å 90.00° 92.84° 90.00°	Depositor
Resolution (Å)	20.00 – 1.50 30.93 – 1.50	Depositor EDS
% Data completeness (in resolution range)	(Not available) (20.00-1.50) 86.9 (30.93-1.50)	Depositor EDS
R_{merge}	(Not available)	Depositor
R_{sym}	0.08	Depositor
$\langle I/\sigma(I) \rangle$ ¹	3.49 (at 1.50Å)	Xtriage
Refinement program	SHELXL-97	Depositor
R, R_{free}	0.169 , 0.220 0.168 , 0.218	Depositor DCC
R_{free} test set	2160 reflections (5.29%)	DCC
Wilson B-factor (Å ²)	15.3	Xtriage
Anisotropy	0.144	Xtriage
Bulk solvent k_{sol} (e/Å ³), B_{sol} (Å ²)	0.30 , 46.3	EDS
L-test for twinning ²	$\langle L \rangle = 0.50$, $\langle L^2 \rangle = 0.33$	Xtriage
Estimated twinning fraction	0.000 for -l,k,h 0.031 for -h,-k,l 0.025 for l,-k,h	Xtriage
F_o, F_c correlation	0.97	EDS
Total number of atoms	3042	wwPDB-VP
Average B, all atoms (Å ²)	20.0	wwPDB-VP

Xtriage's analysis on translational NCS is as follows: *The largest off-origin peak in the Patterson function is 8.49% of the height of the origin peak. No significant pseudotranslation is detected.*

¹Intensities estimated from amplitudes.

²Theoretical values of $\langle |L| \rangle$, $\langle L^2 \rangle$ for acentric reflections are 0.5, 0.333 respectively for untwinned datasets, and 0.375, 0.2 for perfectly twinned datasets.

5 Model quality

5.1 Standard geometry

Bond lengths and bond angles in the following residue types are not validated in this section: NAP, TOL

The Z score for a bond length (or angle) is the number of standard deviations the observed value is removed from the expected value. A bond length (or angle) with $|Z| > 5$ is considered an outlier worth inspection. RMSZ is the root-mean-square of all Z scores of the bond lengths (or angles).

Mol	Chain	Bond lengths		Bond angles	
		RMSZ	$\# Z > 5$	RMSZ	$\# Z > 5$
1	A	0.55	0/2644	1.23	12/3588 (0.3%)

There are no bond length outliers.

All (12) bond angle outliers are listed below:

Mol	Chain	Res	Type	Atoms	Z	Observed(°)	Ideal(°)
1	A	198	TYR	CB-CG-CD2	9.87	126.92	121.00
1	A	48	TYR	CB-CG-CD1	9.64	126.79	121.00
1	A	189	TYR	CB-CG-CD1	7.96	125.78	121.00
1	A	209	TYR	CA-CB-CG	7.74	128.10	113.40
1	A	198	TYR	CB-CG-CD1	-7.43	116.54	121.00
1	A	209	TYR	CB-CG-CD1	6.82	125.09	121.00
1	A	40	ARG	NE-CZ-NH2	6.41	123.51	120.30
1	A	189	TYR	CB-CG-CD2	-6.20	117.28	121.00
1	A	48	TYR	CG-CD1-CE1	5.83	125.97	121.30
1	A	51	GLU	OE1-CD-OE2	5.41	129.79	123.30
1	A	40	ARG	NE-CZ-NH1	-5.18	117.71	120.30
1	A	48	TYR	CB-CG-CD2	-5.10	117.94	121.00

There are no chirality outliers.

There are no planarity outliers.

5.2 Too-close contacts

In the following table, the Non-H and H(model) columns list the number of non-hydrogen atoms and hydrogen atoms in the chain respectively. The H(added) column lists the number of hydrogen atoms added and optimized by MolProbity. The Clashes column lists the number of clashes within the asymmetric unit, whereas Symm-Clashes lists symmetry related clashes.

Mol	Chain	Non-H	H(model)	H(added)	Clashes	Symm-Clashes
1	A	2554	0	2565	25	0
2	A	48	0	25	2	0
3	A	96	0	52	1	0
4	A	344	0	0	7	0
All	All	3042	0	2642	26	0

The all-atom clashscore is defined as the number of clashes found per 1000 atoms (including hydrogen atoms). The all-atom clashscore for this structure is 5.

All (26) close contacts within the same asymmetric unit are listed below, sorted by their clash magnitude.

Atom-1	Atom-2	Interatomic distance (Å)	Clash overlap (Å)
1:A:85:LYS:HD3	1:A:143:ALA:HB2	1.64	0.80
1:A:85:LYS:HZ2	1:A:139:ASP:HB3	1.52	0.74
1:A:274:LYS:HE3	4:A:1489:HOH:O	1.90	0.70
1:A:85:LYS:HE3	1:A:142:ALA:HB3	1.75	0.68
1:A:0:MET:HE3	1:A:250:ARG:NH2	2.13	0.64
1:A:146:GLU:O	1:A:150[A]:GLU:HG3	1.96	0.64
1:A:59:GLN:HG2	4:A:1549:HOH:O	1.98	0.63
1:A:233:ILE:HG22	1:A:244:THR:HG23	1.82	0.61
1:A:138:LEU:HG	4:A:1571:HOH:O	2.01	0.61
1:A:152[B]:LEU:HD13	4:A:1390:HOH:O	2.01	0.59
1:A:96:LEU:CD1	1:A:152[B]:LEU:HD12	2.34	0.58
1:A:100:LYS:HE2	4:A:1554:HOH:O	2.10	0.52
1:A:68:LYS:HG2	4:A:1503:HOH:O	2.11	0.50
1:A:262:LYS:O	2:A:500:NAP:H8A	2.11	0.50
1:A:85:LYS:HD2	4:A:1546:HOH:O	2.12	0.49
1:A:75:VAL:HG22	1:A:106:LEU:HB3	1.94	0.49
1:A:20:TRP:CE3	1:A:21:LYS:HE3	2.49	0.48
3:A:800:TOL:H143	3:A:900:TOL:H5	1.99	0.45
1:A:176:LYS:HD3	1:A:177:TYR:CE2	2.53	0.44
1:A:301:LEU:HA	1:A:304:THR:HG23	2.00	0.42
1:A:80:CYS:SG	1:A:111:TRP:HB2	2.60	0.42
1:A:0:MET:HB2	1:A:0:MET:HE3	1.70	0.42
1:A:183:GLN:OE1	2:A:500:NAP:H2N	2.20	0.41
1:A:172:LYS:HA	1:A:173:PRO:HD3	1.83	0.41
1:A:181:VAL:HA	1:A:205:VAL:O	2.20	0.40

There are no symmetry-related clashes.

5.3 Torsion angles

5.3.1 Protein backbone

In the following table, the Percentiles column shows the percent Ramachandran outliers of the chain as a percentile score with respect to all X-ray entries followed by that with respect to entries of similar resolution.

The Analysed column shows the number of residues for which the backbone conformation was analysed, and the total number of residues.

Mol	Chain	Analysed	Favoured	Allowed	Outliers	Percentiles	
1	A	321/316 (102%)	314 (98%)	7 (2%)	0	100	100

There are no Ramachandran outliers to report.

5.3.2 Protein sidechains

In the following table, the Percentiles column shows the percent sidechain outliers of the chain as a percentile score with respect to all X-ray entries followed by that with respect to entries of similar resolution.

The Analysed column shows the number of residues for which the sidechain conformation was analysed, and the total number of residues.

Mol	Chain	Analysed	Rotameric	Outliers	Percentiles	
1	A	288/281 (102%)	283 (98%)	5 (2%)	66	36

All (5) residues with a non-rotameric sidechain are listed below:

Mol	Chain	Res	Type
1	A	0	MET
1	A	100	LYS
1	A	119	LYS
1	A	209	TYR
1	A	305	SER

Some sidechains can be flipped to improve hydrogen bonding and reduce clashes. All (2) such sidechains are listed below:

Mol	Chain	Res	Type
1	A	52	ASN
1	A	171	ASN

5.3.3 RNA ⓘ

There are no RNA molecules in this entry.

5.4 Non-standard residues in protein, DNA, RNA chains ⓘ

There are no non-standard protein/DNA/RNA residues in this entry.

5.5 Carbohydrates ⓘ

There are no carbohydrates in this entry.

5.6 Ligand geometry ⓘ

5 ligands are modelled in this entry.

In the following table, the Counts columns list the number of bonds (or angles) for which Mogul statistics could be retrieved, the number of bonds (or angles) that are observed in the model and the number of bonds (or angles) that are defined in the chemical component dictionary. The Link column lists molecule types, if any, to which the group is linked. The Z score for a bond length (or angle) is the number of standard deviations the observed value is removed from the expected value. A bond length (or angle) with $|Z| > 2$ is considered an outlier worth inspection. RMSZ is the root-mean-square of all Z scores of the bond lengths (or angles).

Mol	Type	Chain	Res	Link	Bond lengths			Bond angles		
					Counts	RMSZ	# $ Z > 2$	Counts	RMSZ	# $ Z > 2$
2	NAP	A	500	-	44,52,52	1.10	4 (9%)	51,80,80	1.93	13 (25%)
3	TOL	A	600	-	20,25,25	2.02	6 (30%)	29,37,37	1.60	6 (20%)
3	TOL	A	700	-	20,25,25	1.69	5 (25%)	29,37,37	1.93	6 (20%)
3	TOL	A	800	-	20,25,25	1.69	5 (25%)	29,37,37	1.89	7 (24%)
3	TOL	A	900	-	20,25,25	1.82	5 (25%)	29,37,37	1.67	7 (24%)

In the following table, the Chirals column lists the number of chiral outliers, the number of chiral centers analysed, the number of these observed in the model and the number defined in the chemical component dictionary. Similar counts are reported in the Torsion and Rings columns. '-' means no outliers of that kind were identified.

Mol	Type	Chain	Res	Link	Chirals	Torsions	Rings
2	NAP	A	500	-	-	0/27/67/67	0/5/5/5
3	TOL	A	600	-	-	0/18/20/20	0/2/2/2
3	TOL	A	700	-	-	0/18/20/20	0/2/2/2
3	TOL	A	800	-	-	0/18/20/20	0/2/2/2

Continued on next page...

Continued from previous page...

Mol	Type	Chain	Res	Link	Chirals	Torsions	Rings
3	TOL	A	900	-	-	0/18/20/20	0/2/2/2

All (25) bond length outliers are listed below:

Mol	Chain	Res	Type	Atoms	Z	Observed(Å)	Ideal(Å)
3	A	600	TOL	O1-C3	-3.32	1.32	1.37
3	A	800	TOL	O1-C3	-2.99	1.32	1.37
3	A	900	TOL	O1-C3	-2.68	1.33	1.37
3	A	700	TOL	O1-C3	-2.48	1.33	1.37
2	A	500	NAP	C6N-N1N	2.03	1.40	1.35
3	A	800	TOL	C1-C2	2.03	1.54	1.51
3	A	800	TOL	C9-C8	2.06	1.41	1.38
3	A	700	TOL	C6-C5	2.09	1.41	1.36
3	A	900	TOL	C9-C8	2.24	1.42	1.38
3	A	700	TOL	C13-S1	2.27	1.70	1.66
3	A	600	TOL	C1-C2	2.30	1.54	1.51
3	A	600	TOL	C9-C8	2.34	1.42	1.38
3	A	600	TOL	C6-C5	2.35	1.41	1.36
2	A	500	NAP	C3N-C7N	2.46	1.54	1.50
2	A	500	NAP	O4D-C1D	2.62	1.44	1.41
2	A	500	NAP	O4B-C1B	2.70	1.45	1.41
3	A	800	TOL	C6-C5	2.79	1.42	1.36
3	A	900	TOL	C1-C2	3.11	1.55	1.51
3	A	900	TOL	C13-S1	3.50	1.73	1.66
3	A	700	TOL	C1-C2	3.71	1.55	1.51
3	A	600	TOL	C13-S1	3.76	1.73	1.66
3	A	700	TOL	C3-C2	4.05	1.42	1.38
3	A	900	TOL	C3-C2	4.28	1.42	1.38
3	A	800	TOL	C3-C2	4.44	1.42	1.38
3	A	600	TOL	C3-C2	5.01	1.43	1.38

All (39) bond angle outliers are listed below:

Mol	Chain	Res	Type	Atoms	Z	Observed(°)	Ideal(°)
2	A	500	NAP	N3A-C2A-N1A	-6.93	122.82	128.86
3	A	600	TOL	C6-C7-C8	-4.11	117.17	123.28
3	A	800	TOL	F3-C1-C2	-3.96	103.99	112.50
3	A	700	TOL	C9-C8-C13	-3.74	114.97	119.60
3	A	900	TOL	C4-O1-C3	-3.62	112.32	117.54
2	A	500	NAP	C3N-C7N-N7N	-3.59	113.67	117.77
3	A	700	TOL	C5-C3-C2	-3.41	118.46	122.90
2	A	500	NAP	C4B-O4B-C1B	-3.17	106.39	109.77

Continued on next page...

Continued from previous page...

Mol	Chain	Res	Type	Atoms	Z	Observed(°)	Ideal(°)
3	A	600	TOL	C4-O1-C3	-3.14	113.01	117.54
2	A	500	NAP	C3N-C2N-N1N	-3.10	117.31	120.43
3	A	700	TOL	C4-O1-C3	-3.08	113.11	117.54
2	A	500	NAP	C4D-O4D-C1D	-2.73	106.87	109.77
3	A	900	TOL	C5-C3-C2	-2.69	119.40	122.90
3	A	900	TOL	O1-C3-C5	-2.58	120.04	124.37
3	A	800	TOL	C6-C7-C8	-2.57	119.46	123.28
3	A	900	TOL	C6-C7-C8	-2.53	119.53	123.28
3	A	700	TOL	C14-N1-C13	-2.41	117.60	122.71
2	A	500	NAP	C5A-C6A-N1A	-2.38	112.51	119.70
3	A	600	TOL	O1-C3-C5	-2.30	120.51	124.37
3	A	800	TOL	C5-C6-C7	-2.25	118.07	121.14
3	A	700	TOL	C16-C15-N1	-2.19	109.18	113.86
3	A	800	TOL	C11-C10-C9	-2.19	117.41	120.97
2	A	500	NAP	O2B-P2B-O1X	-2.10	101.04	109.26
2	A	500	NAP	O3D-C3D-C4D	2.05	117.06	111.09
3	A	600	TOL	C8-C7-C12	2.12	120.73	118.98
3	A	600	TOL	F3-C1-F1	2.14	113.63	105.70
2	A	500	NAP	C2N-C3N-C4N	2.18	120.75	118.26
3	A	900	TOL	C8-C7-C12	2.32	120.88	118.98
3	A	900	TOL	O1-C3-C2	2.58	120.55	116.56
2	A	500	NAP	O7N-C7N-N7N	2.74	126.47	122.58
3	A	600	TOL	C6-C7-C12	2.83	122.06	118.49
2	A	500	NAP	C4A-C5A-N7A	3.18	112.49	109.41
3	A	800	TOL	F1-C1-C2	3.44	119.89	112.50
3	A	800	TOL	C6-C7-C12	3.58	123.01	118.49
2	A	500	NAP	C2A-N1A-C6A	3.65	125.17	118.77
2	A	500	NAP	C5A-C6A-N6A	4.00	128.62	120.47
3	A	800	TOL	C3-C2-C12	4.35	120.56	117.49
3	A	900	TOL	C3-C2-C12	4.56	120.71	117.49
3	A	700	TOL	C3-C2-C12	6.49	122.07	117.49

There are no chirality outliers.

There are no torsion outliers.

There are no ring outliers.

3 monomers are involved in 3 short contacts:

Mol	Chain	Res	Type	Clashes	Symm-Clashes
2	A	500	NAP	2	0
3	A	800	TOL	1	0
3	A	900	TOL	1	0

5.7 Other polymers [i](#)

There are no such residues in this entry.

5.8 Polymer linkage issues [i](#)

There are no chain breaks in this entry.

6 Fit of model and data [i](#)

6.1 Protein, DNA and RNA chains [i](#)

In the following table, the column labelled ‘#RSRZ> 2’ contains the number (and percentage) of RSRZ outliers, followed by percent RSRZ outliers for the chain as percentile scores relative to all X-ray entries and entries of similar resolution. The OWAB column contains the minimum, median, 95th percentile and maximum values of the occupancy-weighted average B-factor per residue. The column labelled ‘Q< 0.9’ lists the number of (and percentage) of residues with an average occupancy less than 0.9.

Mol	Chain	Analysed	<RSRZ>	#RSRZ>2	OWAB(Å ²)	Q<0.9
1	A	316/316 (100%)	0.13	2 (0%) 89 91	13, 18, 29, 44	1 (0%)

All (2) RSRZ outliers are listed below:

Mol	Chain	Res	Type	RSRZ
1	A	238	ALA	2.3
1	A	241	ASN	2.0

6.2 Non-standard residues in protein, DNA, RNA chains [i](#)

There are no non-standard protein/DNA/RNA residues in this entry.

6.3 Carbohydrates [i](#)

There are no carbohydrates in this entry.

6.4 Ligands [i](#)

In the following table, the Atoms column lists the number of modelled atoms in the group and the number defined in the chemical component dictionary. LLDF column lists the quality of electron density of the group with respect to its neighbouring residues in protein, DNA or RNA chains. The B-factors column lists the minimum, median, 95th percentile and maximum values of B factors of atoms in the group. The column labelled ‘Q< 0.9’ lists the number of atoms with occupancy less than 0.9.

Mol	Type	Chain	Res	Atoms	RSCC	RSR	LLDF	B-factors(Å ²)	Q<0.9
3	TOL	A	700	24/24	0.85	0.18	6.91	20,30,39,40	0
3	TOL	A	900	24/24	0.87	0.18	6.00	22,31,40,48	0
3	TOL	A	800	24/24	0.93	0.12	2.24	16,23,27,30	0

Continued on next page...

Continued from previous page...

Mol	Type	Chain	Res	Atoms	RSCC	RSR	LLDF	B-factors(\AA^2)	Q<0.9
3	TOL	A	600	24/24	0.94	0.10	0.45	12,15,19,23	0
2	NAP	A	500	48/48	0.97	0.08	-1.10	11,14,17,18	0

6.5 Other polymers [i](#)

There are no such residues in this entry.