



Full wwPDB X-ray Structure Validation Report ⓘ

Feb 13, 2017 – 03:26 am GMT

PDB ID : 3G0U
Title : Human dihydroorotate dehydrogenase in complex with a leflunomide derivative inhibitor 4
Authors : Davis, M.; Heikkila, T.; McConkey, G.A.; Fishwick, C.W.G.; Parsons, M.R.; Johnson, A.P.
Deposited on : 2009-01-28
Resolution : 2.00 Å(reported)

This is a Full wwPDB X-ray Structure Validation Report for a publicly released PDB entry.

We welcome your comments at validation@mail.wwpdb.org

A user guide is available at

<http://wwpdb.org/validation/2016/XrayValidationReportHelp>

with specific help available everywhere you see the ⓘ symbol.

The following versions of software and data (see [references ⓘ](#)) were used in the production of this report:

MolProbity : 4.02b-467
Mogul : 1.7.2 (RC1), CSD as538be (2017)
Xtriage (Phenix) : 1.9-1692
EDS : trunk28620
Percentile statistics : 20161228.v01 (using entries in the PDB archive December 28th 2016)
Refmac : 5.8.0135
CCP4 : 6.5.0
Ideal geometry (proteins) : Engh & Huber (2001)
Ideal geometry (DNA, RNA) : Parkinson et al. (1996)
Validation Pipeline (wwPDB-VP) : recalc28949

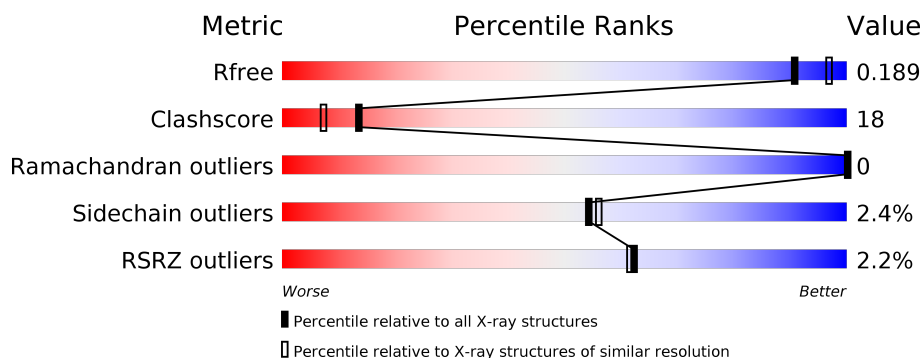
1 Overall quality at a glance

The following experimental techniques were used to determine the structure:

X-RAY DIFFRACTION

The reported resolution of this entry is 2.00 Å.

Percentile scores (ranging between 0-100) for global validation metrics of the entry are shown in the following graphic. The table shows the number of entries on which the scores are based.



Metric	Whole archive (#Entries)	Similar resolution (#Entries, resolution range(Å))
R_{free}	100719	6609 (2.00-2.00)
Clashscore	112137	7775 (2.00-2.00)
Ramachandran outliers	110173	7679 (2.00-2.00)
Sidechain outliers	110143	7678 (2.00-2.00)
RSRZ outliers	101464	6696 (2.00-2.00)

The table below summarises the geometric issues observed across the polymeric chains and their fit to the electron density. The red, orange, yellow and green segments on the lower bar indicate the fraction of residues that contain outliers for ≥ 3 , 2, 1 and 0 types of geometric quality criteria. A grey segment represents the fraction of residues that are not modelled. The numeric value for each fraction is indicated below the corresponding segment, with a dot representing fractions $\leq 5\%$. The upper red bar (where present) indicates the fraction of residues that have poor fit to the electron density. The numeric value is given above the bar.

Mol	Chain	Length	Quality of chain
1	A	367	<div> <div>2%</div> <div> <div></div> <div>75%</div> <div>21%</div> <div>••</div> </div> </div>

2 Entry composition [i](#)

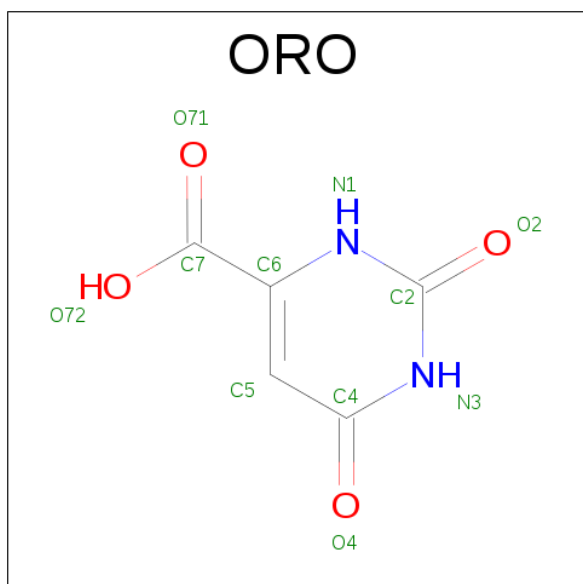
There are 5 unique types of molecules in this entry. The entry contains 3150 atoms, of which 0 are hydrogens and 0 are deuteriums.

In the tables below, the ZeroOcc column contains the number of atoms modelled with zero occupancy, the AltConf column contains the number of residues with at least one atom in alternate conformation and the Trace column contains the number of residues modelled with at most 2 atoms.

- Molecule 1 is a protein called Dihydroorotate dehydrogenase.

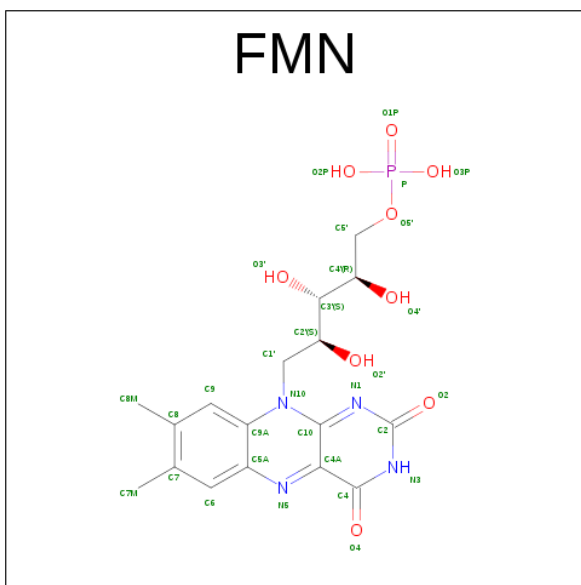
Mol	Chain	Residues	Atoms					ZeroOcc	AltConf	Trace
1	A	361	Total	C	N	O	S	0	5	0
			2770	1737	509	520	4			

- Molecule 2 is OROTIC ACID (three-letter code: ORO) (formula: $C_5H_4N_2O_4$).



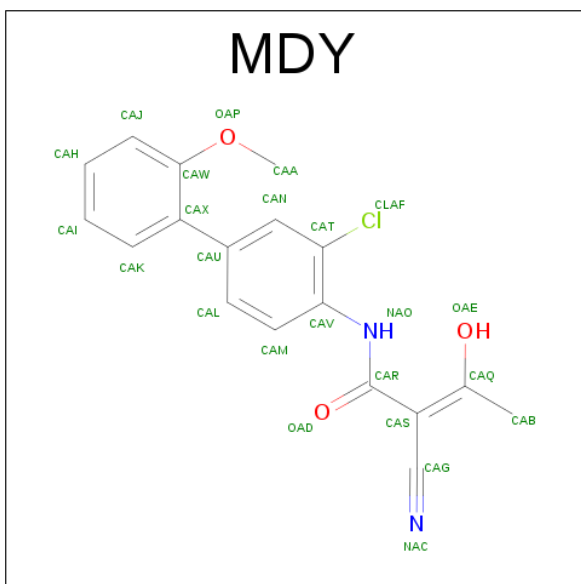
Mol	Chain	Residues	Atoms				ZeroOcc	AltConf
2	A	1	Total	C	N	O	0	0
			11	5	2	4		

- Molecule 3 is FLAVIN MONONUCLEOTIDE (three-letter code: FMN) (formula: $C_{17}H_{21}N_4O_9P$).



Mol	Chain	Residues	Atoms					ZeroOcc	AltConf
3	A	1	Total	C	N	O	P	0	0
			31	17	4	9	1		

- Molecule 4 is (2Z)-N-(3-CHLORO-2'-METHOXYBIPHENYL-4-YL)-2-CYANO-3-HYDROXYBUT-2-ENAMIDE (three-letter code: MDY) (formula: C₁₈H₁₅ClN₂O₃).



Mol	Chain	Residues	Atoms					ZeroOcc	AltConf
4	A	1	Total	C	Cl	N	O	0	0
			24	18	1	2	3		

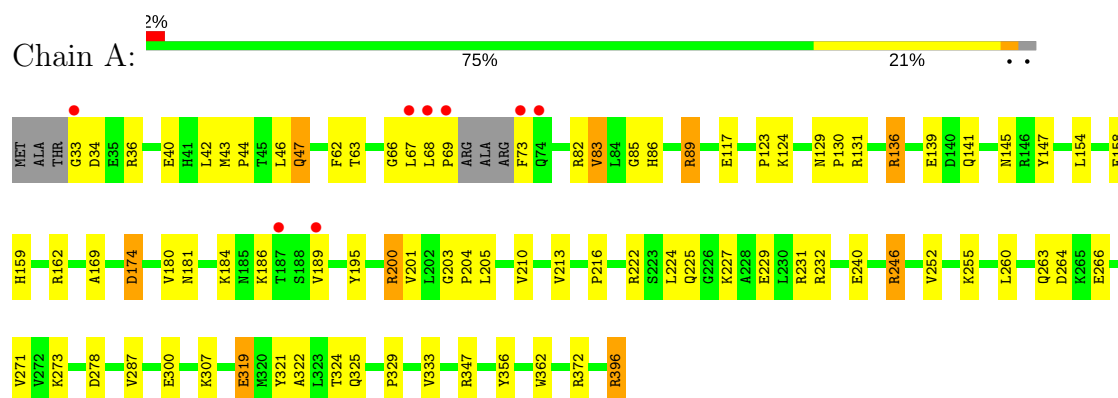
- Molecule 5 is water.

Mol	Chain	Residues	Atoms		ZeroOcc	AltConf
5	A	314	Total 314	O 314	0	0

3 Residue-property plots [i](#)

These plots are drawn for all protein, RNA and DNA chains in the entry. The first graphic for a chain summarises the proportions of the various outlier classes displayed in the second graphic. The second graphic shows the sequence view annotated by issues in geometry and electron density. Residues are color-coded according to the number of geometric quality criteria for which they contain at least one outlier: green = 0, yellow = 1, orange = 2 and red = 3 or more. A red dot above a residue indicates a poor fit to the electron density ($RSRZ > 2$). Stretches of 2 or more consecutive residues without any outlier are shown as a green connector. Residues present in the sample, but not in the model, are shown in grey.

• Molecule 1: Dihydroorotate dehydrogenase



4 Data and refinement statistics

Property	Value	Source
Space group	P 32 2 1	Depositor
Cell constants a, b, c, α , β , γ	90.75Å 90.75Å 122.80Å 90.00° 90.00° 120.00°	Depositor
Resolution (Å)	78.59 – 2.00 48.38 – 2.00	Depositor EDS
% Data completeness (in resolution range)	99.9 (78.59-2.00) 99.9 (48.38-2.00)	Depositor EDS
R_{merge}	(Not available)	Depositor
R_{sym}	(Not available)	Depositor
$\langle I/\sigma(I) \rangle$ ¹	2.79 (at 2.00Å)	Xtriage
Refinement program	REFMAC 5.5.0066	Depositor
R, R_{free}	0.170 , 0.203 0.157 , 0.189	Depositor DCC
R_{free} test set	2005 reflections (5.27%)	DCC
Wilson B-factor (Å ²)	14.1	Xtriage
Anisotropy	0.080	Xtriage
Bulk solvent k_{sol} (e/Å ³), B_{sol} (Å ²)	0.38 , 63.4	EDS
L-test for twinning ²	$\langle L \rangle = 0.49$, $\langle L^2 \rangle = 0.32$	Xtriage
Estimated twinning fraction	0.024 for -h,-k,l	Xtriage
F_o, F_c correlation	0.95	EDS
Total number of atoms	3150	wwPDB-VP
Average B, all atoms (Å ²)	16.0	wwPDB-VP

Xtriage's analysis on translational NCS is as follows: *The largest off-origin peak in the Patterson function is 4.19% of the height of the origin peak. No significant pseudotranslation is detected.*

¹Intensities estimated from amplitudes.

²Theoretical values of $\langle |L| \rangle$, $\langle L^2 \rangle$ for acentric reflections are 0.5, 0.333 respectively for untwinned datasets, and 0.375, 0.2 for perfectly twinned datasets.

5 Model quality

5.1 Standard geometry

Bond lengths and bond angles in the following residue types are not validated in this section: FMN, ORO, MDY

The Z score for a bond length (or angle) is the number of standard deviations the observed value is removed from the expected value. A bond length (or angle) with $|Z| > 5$ is considered an outlier worth inspection. RMSZ is the root-mean-square of all Z scores of the bond lengths (or angles).

Mol	Chain	Bond lengths		Bond angles	
		RMSZ	$\# Z > 5$	RMSZ	$\# Z > 5$
1	A	1.43	18/2836 (0.6%)	1.18	14/3830 (0.4%)

All (18) bond length outliers are listed below:

Mol	Chain	Res	Type	Atoms	Z	Observed(Å)	Ideal(Å)
1	A	169	ALA	CA-CB	7.13	1.67	1.52
1	A	252	VAL	CB-CG2	6.86	1.67	1.52
1	A	201	VAL	CB-CG2	6.40	1.66	1.52
1	A	271	VAL	CB-CG1	6.13	1.65	1.52
1	A	139	GLU	CD-OE2	6.07	1.32	1.25
1	A	333	VAL	CB-CG2	-6.02	1.40	1.52
1	A	158	GLU	CB-CG	6.01	1.63	1.52
1	A	322	ALA	CA-CB	5.87	1.64	1.52
1	A	147	TYR	CD2-CE2	5.87	1.48	1.39
1	A	195	TYR	CD1-CE1	5.81	1.48	1.39
1	A	307	LYS	CD-CE	5.79	1.65	1.51
1	A	47	GLN	CG-CD	5.45	1.63	1.51
1	A	319	GLU	CD-OE1	5.15	1.31	1.25
1	A	124	LYS	CD-CE	5.10	1.64	1.51
1	A	321	TYR	CD1-CE1	5.10	1.47	1.39
1	A	158	GLU	CG-CD	5.07	1.59	1.51
1	A	300	GLU	CG-CD	5.07	1.59	1.51
1	A	255	LYS	CD-CE	5.02	1.63	1.51

All (14) bond angle outliers are listed below:

Mol	Chain	Res	Type	Atoms	Z	Observed(°)	Ideal(°)
1	A	136	ARG	NE-CZ-NH2	12.63	126.61	120.30
1	A	200	ARG	NE-CZ-NH1	-10.70	114.95	120.30
1	A	136	ARG	NE-CZ-NH1	-10.27	115.17	120.30

Continued on next page...

Continued from previous page...

Mol	Chain	Res	Type	Atoms	Z	Observed(°)	Ideal(°)
1	A	83	VAL	CB-CA-C	-8.36	95.51	111.40
1	A	162	ARG	NE-CZ-NH1	-8.07	116.27	120.30
1	A	333	VAL	CB-CA-C	-7.65	96.87	111.40
1	A	333	VAL	CG1-CB-CG2	6.95	122.02	110.90
1	A	333	VAL	CA-CB-CG2	5.58	119.28	110.90
1	A	174	ASP	CB-CA-C	-5.36	99.69	110.40
1	A	131	ARG	NE-CZ-NH2	-5.34	117.63	120.30
1	A	347	ARG	NE-CZ-NH2	-5.33	117.63	120.30
1	A	46	LEU	CA-CB-CG	-5.29	103.12	115.30
1	A	200	ARG	CA-CB-CG	-5.10	102.19	113.40
1	A	136	ARG	CD-NE-CZ	5.08	130.72	123.60

There are no chirality outliers.

There are no planarity outliers.

5.2 Too-close contacts ⓘ

In the following table, the Non-H and H(model) columns list the number of non-hydrogen atoms and hydrogen atoms in the chain respectively. The H(added) column lists the number of hydrogen atoms added and optimized by MolProbity. The Clashes column lists the number of clashes within the asymmetric unit, whereas Symm-Clashes lists symmetry related clashes.

Mol	Chain	Non-H	H(model)	H(added)	Clashes	Symm-Clashes
1	A	2770	0	2825	102	2
2	A	11	0	3	1	0
3	A	31	0	19	0	0
4	A	24	0	14	1	0
5	A	314	0	0	66	2
All	All	3150	0	2861	102	2

The all-atom clashscore is defined as the number of clashes found per 1000 atoms (including hydrogen atoms). The all-atom clashscore for this structure is 18.

All (102) close contacts within the same asymmetric unit are listed below, sorted by their clash magnitude.

Atom-1	Atom-2	Interatomic distance (Å)	Clash overlap (Å)
1:A:210:VAL:CG2	5:A:655:HOH:O	1.70	1.34
1:A:240:GLU:CD	5:A:663:HOH:O	1.70	1.27
1:A:68:LEU:HA	5:A:667:HOH:O	1.17	1.26
1:A:86:HIS:N	5:A:657:HOH:O	1.70	1.20

Continued on next page...

Continued from previous page...

Atom-1	Atom-2	Interatomic distance (Å)	Clash overlap (Å)
1:A:36:ARG:HG2	1:A:40:GLU:OE2	1.36	1.18
1:A:36:ARG:CG	1:A:40:GLU:OE2	1.93	1.14
1:A:189:VAL:O	1:A:189:VAL:HG12	1.49	1.13
1:A:319:GLU:HG3	5:A:612:HOH:O	1.46	1.12
1:A:210:VAL:CB	5:A:655:HOH:O	1.78	1.11
1:A:210:VAL:HG23	5:A:655:HOH:O	1.40	1.02
1:A:210:VAL:HB	5:A:655:HOH:O	1.46	1.01
1:A:86:HIS:CA	5:A:657:HOH:O	2.07	0.99
1:A:68:LEU:HD23	5:A:667:HOH:O	1.61	0.99
1:A:213:VAL:CG2	1:A:224:LEU:HB2	1.92	0.98
1:A:246:ARG:HG2	5:A:6:HOH:O	1.63	0.98
1:A:47:GLN:HG2	5:A:522:HOH:O	1.66	0.96
1:A:213:VAL:HG23	1:A:224:LEU:HB2	1.45	0.95
1:A:222:ARG:HG3	5:A:656:HOH:O	1.66	0.94
1:A:136:ARG:NH1	5:A:522:HOH:O	1.80	0.94
1:A:189:VAL:O	1:A:189:VAL:CG1	2.19	0.91
1:A:33:GLY:N	5:A:665:HOH:O	2.06	0.86
1:A:180:VAL:C	5:A:660:HOH:O	2.13	0.85
1:A:225:GLN:CG	5:A:659:HOH:O	2.24	0.85
1:A:362:TRP:CZ2	5:A:661:HOH:O	2.26	0.85
1:A:229:GLU:HG2	5:A:652:HOH:O	1.75	0.85
1:A:225:GLN:HG2	5:A:659:HOH:O	1.77	0.85
1:A:73:PHE:N	5:A:653:HOH:O	2.12	0.83
1:A:181:ASN:HA	5:A:655:HOH:O	1.80	0.81
1:A:66:GLY:HA2	5:A:639:HOH:O	1.83	0.79
1:A:141:GLN:HG2	5:A:661:HOH:O	1.82	0.78
1:A:372:ARG:HD3	5:A:514:HOH:O	1.82	0.78
1:A:240:GLU:CG	5:A:663:HOH:O	2.19	0.77
1:A:68:LEU:CA	5:A:667:HOH:O	1.93	0.76
1:A:86:HIS:C	5:A:657:HOH:O	2.24	0.75
1:A:82:ARG:NH1	5:A:657:HOH:O	2.20	0.75
1:A:36:ARG:HG3	1:A:40:GLU:OE2	1.88	0.72
1:A:213:VAL:HG21	1:A:224:LEU:HB2	1.71	0.71
1:A:47:GLN:NE2	1:A:136:ARG:HD3	2.05	0.71
1:A:222:ARG:CG	5:A:656:HOH:O	2.31	0.70
1:A:232:ARG:CZ	1:A:232:ARG:HB2	2.20	0.70
1:A:68:LEU:CD2	5:A:667:HOH:O	2.30	0.69
1:A:273:LYS:O	5:A:536:HOH:O	2.11	0.68
1:A:36:ARG:HG2	1:A:40:GLU:CD	2.13	0.68
1:A:159:HIS:HD2	5:A:619:HOH:O	1.76	0.67
1:A:145:ASN:OD1	2:A:1:ORO:H5	1.97	0.65

Continued on next page...

Continued from previous page...

Atom-1	Atom-2	Interatomic distance (Å)	Clash overlap (Å)
1:A:68:LEU:CB	5:A:667:HOH:O	2.31	0.65
1:A:69:PRO:HD2	5:A:667:HOH:O	1.97	0.64
1:A:136:ARG:NE	5:A:522:HOH:O	2.32	0.63
1:A:34:ASP:N	5:A:665:HOH:O	2.30	0.63
1:A:227:LYS:HE2	1:A:231:ARG:NH2	2.13	0.62
1:A:213:VAL:HG22	1:A:213:VAL:O	1.99	0.62
1:A:82:ARG:HB2	5:A:525:HOH:O	1.99	0.61
1:A:181:ASN:N	5:A:660:HOH:O	2.32	0.61
1:A:224:LEU:HD23	1:A:229:GLU:OE2	2.00	0.61
1:A:82:ARG:HD2	5:A:525:HOH:O	2.01	0.59
1:A:213:VAL:HG21	1:A:224:LEU:CB	2.33	0.58
1:A:227:LYS:HE2	1:A:231:ARG:HH22	1.69	0.58
1:A:123:PRO:HA	1:A:154:LEU:HG	1.86	0.57
1:A:62:PHE:CE2	1:A:67:LEU:O	2.58	0.57
1:A:136:ARG:CZ	5:A:522:HOH:O	2.37	0.53
1:A:89:ARG:NH1	5:A:607:HOH:O	2.29	0.53
1:A:117:GLU:HG3	5:A:660:HOH:O	2.07	0.53
1:A:62:PHE:CZ	1:A:67:LEU:O	2.62	0.53
1:A:42:LEU:HD23	1:A:42:LEU:C	2.29	0.52
1:A:229:GLU:CG	5:A:652:HOH:O	2.41	0.52
1:A:82:ARG:CZ	5:A:657:HOH:O	2.57	0.52
1:A:396:ARG:HG3	1:A:396:ARG:HH21	1.75	0.51
1:A:205:LEU:C	5:A:610:HOH:O	2.49	0.49
1:A:89:ARG:HD2	5:A:607:HOH:O	2.12	0.49
1:A:68:LEU:HD12	5:A:639:HOH:O	2.13	0.48
1:A:63:THR:OG1	4:A:2:MDY:HAA	2.13	0.48
1:A:180:VAL:N	5:A:660:HOH:O	2.46	0.48
1:A:180:VAL:CA	5:A:660:HOH:O	2.58	0.47
1:A:43:MET:N	1:A:44:PRO:CD	2.79	0.45
1:A:141:GLN:CG	5:A:661:HOH:O	2.53	0.45
1:A:232:ARG:CZ	1:A:232:ARG:CB	2.94	0.45
1:A:216:PRO:HB3	1:A:287:VAL:CG1	2.48	0.43
1:A:68:LEU:O	1:A:69:PRO:C	2.54	0.43
1:A:85:GLY:C	5:A:657:HOH:O	2.32	0.43
1:A:181:ASN:CA	5:A:655:HOH:O	2.52	0.43
1:A:225:GLN:HG3	5:A:659:HOH:O	2.03	0.43
1:A:203:GLY:N	1:A:204:PRO:CD	2.82	0.43
1:A:159:HIS:HE1	5:A:413:HOH:O	2.02	0.43
1:A:66:GLY:CA	5:A:639:HOH:O	2.57	0.43
1:A:246:ARG:NH2	5:A:519:HOH:O	2.53	0.42
1:A:278:ASP:O	1:A:329:PRO:HD2	2.20	0.42

Continued on next page...

Continued from previous page...

Atom-1	Atom-2	Interatomic distance (Å)	Clash overlap (Å)
1:A:82:ARG:CD	5:A:525:HOH:O	2.65	0.42
1:A:68:LEU:CG	5:A:639:HOH:O	2.68	0.42
1:A:200:ARG:HH11	1:A:200:ARG:HD3	1.50	0.41
1:A:68:LEU:HG	5:A:639:HOH:O	2.19	0.41
1:A:154:LEU:HD21	5:A:629:HOH:O	2.19	0.41
1:A:260:LEU:HB3	1:A:264:ASP:HB2	2.02	0.41
1:A:213:VAL:HG22	1:A:225:GLN:HG3	2.02	0.41
1:A:273:LYS:HD3	1:A:324:THR:HA	2.01	0.41
1:A:266:GLU:OE1	5:A:436:HOH:O	2.22	0.41
1:A:186:LYS:NZ	5:A:576:HOH:O	2.38	0.41
1:A:263:GLN:NE2	5:A:561:HOH:O	2.53	0.41
1:A:129:ASN:HB3	1:A:130:PRO:HD2	2.03	0.41
1:A:264:ASP:HA	5:A:496:HOH:O	2.20	0.41
1:A:42:LEU:O	1:A:42:LEU:HD23	2.21	0.40
1:A:43:MET:HB2	1:A:44:PRO:HD3	2.03	0.40
1:A:210:VAL:N	5:A:655:HOH:O	2.53	0.40

All (2) symmetry-related close contacts are listed below. The label for Atom-2 includes the symmetry operator and encoded unit-cell translations to be applied.

Atom-1	Atom-2	Interatomic distance (Å)	Clash overlap (Å)
1:A:396:ARG:CD	5:A:638:HOH:O[4_555]	1.95	0.25
1:A:325:GLN:NE2	5:A:654:HOH:O[6_664]	2.13	0.07

5.3 Torsion angles [i](#)

5.3.1 Protein backbone [i](#)

In the following table, the Percentiles column shows the percent Ramachandran outliers of the chain as a percentile score with respect to all X-ray entries followed by that with respect to entries of similar resolution.

The Analysed column shows the number of residues for which the backbone conformation was analysed, and the total number of residues.

Mol	Chain	Analysed	Favoured	Allowed	Outliers	Percentiles
1	A	362/367 (99%)	348 (96%)	14 (4%)	0	100 100

There are no Ramachandran outliers to report.

5.3.2 Protein sidechains [i](#)

In the following table, the Percentiles column shows the percent sidechain outliers of the chain as a percentile score with respect to all X-ray entries followed by that with respect to entries of similar resolution.

The Analysed column shows the number of residues for which the sidechain conformation was analysed, and the total number of residues.

Mol	Chain	Analysed	Rotameric	Outliers	Percentiles
1	A	297/296 (100%)	290 (98%)	7 (2%)	54 56

All (7) residues with a non-rotameric sidechain are listed below:

Mol	Chain	Res	Type
1	A	83	VAL
1	A	89	ARG
1	A	174	ASP
1	A	184	LYS
1	A	246	ARG
1	A	356	TYR
1	A	396	ARG

Some sidechains can be flipped to improve hydrogen bonding and reduce clashes. All (2) such sidechains are listed below:

Mol	Chain	Res	Type
1	A	47	GLN
1	A	159	HIS

5.3.3 RNA [i](#)

There are no RNA molecules in this entry.

5.4 Non-standard residues in protein, DNA, RNA chains [i](#)

There are no non-standard protein/DNA/RNA residues in this entry.

5.5 Carbohydrates [i](#)

There are no carbohydrates in this entry.

5.6 Ligand geometry

3 ligands are modelled in this entry.

In the following table, the Counts columns list the number of bonds (or angles) for which Mogul statistics could be retrieved, the number of bonds (or angles) that are observed in the model and the number of bonds (or angles) that are defined in the chemical component dictionary. The Link column lists molecule types, if any, to which the group is linked. The Z score for a bond length (or angle) is the number of standard deviations the observed value is removed from the expected value. A bond length (or angle) with $|Z| > 2$ is considered an outlier worth inspection. RMSZ is the root-mean-square of all Z scores of the bond lengths (or angles).

Mol	Type	Chain	Res	Link	Bond lengths			Bond angles		
					Counts	RMSZ	# $ Z > 2$	Counts	RMSZ	# $ Z > 2$
2	ORO	A	1	-	6,11,11	2.11	3 (50%)	4,15,15	5.70	3 (75%)
4	MDY	A	2	-	25,25,25	2.57	3 (12%)	33,34,34	1.57	5 (15%)
3	FMN	A	398	-	31,33,33	1.65	6 (19%)	38,50,50	2.24	9 (23%)

In the following table, the Chirals column lists the number of chiral outliers, the number of chiral centers analysed, the number of these observed in the model and the number defined in the chemical component dictionary. Similar counts are reported in the Torsion and Rings columns. '-' means no outliers of that kind were identified.

Mol	Type	Chain	Res	Link	Chirals	Torsions	Rings
2	ORO	A	1	-	-	0/0/4/4	0/1/1/1
4	MDY	A	2	-	-	4/20/20/20	0/2/2/2
3	FMN	A	398	-	-	0/16/18/18	0/3/3/3

All (12) bond length outliers are listed below:

Mol	Chain	Res	Type	Atoms	Z	Observed(Å)	Ideal(Å)
2	A	1	ORO	C2-N3	-3.01	1.32	1.38
4	A	2	MDY	CAX-CAU	-2.42	1.45	1.49
4	A	2	MDY	CAV-NAO	-2.22	1.37	1.41
2	A	1	ORO	C2-N1	2.23	1.42	1.38
3	A	398	FMN	O3'-C3'	2.46	1.48	1.43
3	A	398	FMN	C9A-N10	2.58	1.42	1.38
3	A	398	FMN	C4A-N5	2.71	1.37	1.33
2	A	1	ORO	C6-N1	2.79	1.39	1.34
3	A	398	FMN	C7M-C7	2.80	1.56	1.51
3	A	398	FMN	C5A-N5	3.86	1.41	1.35
3	A	398	FMN	C10-N1	3.96	1.38	1.33
4	A	2	MDY	CAS-CAQ	11.47	1.52	1.37

All (17) bond angle outliers are listed below:

Mol	Chain	Res	Type	Atoms	Z	Observed(°)	Ideal(°)
2	A	1	ORO	C5-C4-N3	-4.43	118.83	124.06
4	A	2	MDY	CAU-CAN-CAT	-3.89	116.37	120.32
3	A	398	FMN	C4A-C4-N3	-3.70	118.21	123.48
4	A	2	MDY	OAP-CAW-CAJ	-3.21	118.99	124.37
3	A	398	FMN	C9A-C5A-N5	-3.10	117.62	122.24
3	A	398	FMN	O2'-C2'-C1'	-2.68	103.59	109.79
4	A	2	MDY	OAD-CAR-CAS	-2.64	117.84	120.75
3	A	398	FMN	C4'-C3'-C2'	-2.25	108.57	113.41
3	A	398	FMN	C7M-C7-C8	-2.13	116.25	120.72
4	A	2	MDY	CAG-CAS-CAQ	2.40	121.63	118.73
3	A	398	FMN	C1'-N10-C10	2.72	121.29	118.50
4	A	2	MDY	CAN-CAT-CAV	3.36	124.72	121.78
3	A	398	FMN	C4A-N5-C5A	3.48	120.44	116.76
3	A	398	FMN	C5A-C9A-N10	5.25	121.56	117.66
2	A	1	ORO	C4-C5-C6	6.34	120.82	116.73
2	A	1	ORO	C4-N3-C2	8.34	121.30	114.13
3	A	398	FMN	C4-N3-C2	8.90	122.94	115.16

There are no chirality outliers.

All (4) torsion outliers are listed below:

Mol	Chain	Res	Type	Atoms
4	A	2	MDY	OAD-CAR-CAS-CAG
4	A	2	MDY	CAG-CAS-CAR-NAO
4	A	2	MDY	OAD-CAR-CAS-CAQ
4	A	2	MDY	CAQ-CAS-CAR-NAO

There are no ring outliers.

2 monomers are involved in 2 short contacts:

Mol	Chain	Res	Type	Clashes	Symm-Clashes
2	A	1	ORO	1	0
4	A	2	MDY	1	0

5.7 Other polymers ⓘ

There are no such residues in this entry.

5.8 Polymer linkage issues ⓘ

There are no chain breaks in this entry.

6 Fit of model and data [i](#)

6.1 Protein, DNA and RNA chains [i](#)

In the following table, the column labelled ‘#RSRZ> 2’ contains the number (and percentage) of RSRZ outliers, followed by percent RSRZ outliers for the chain as percentile scores relative to all X-ray entries and entries of similar resolution. The OWAB column contains the minimum, median, 95th percentile and maximum values of the occupancy-weighted average B-factor per residue. The column labelled ‘Q< 0.9’ lists the number of (and percentage) of residues with an average occupancy less than 0.9.

Mol	Chain	Analysed	<RSRZ>	#RSRZ>2	OWAB(Å ²)	Q<0.9
1	A	361/367 (98%)	-0.52	8 (2%) 62 61	3, 10, 34, 53	0

All (8) RSRZ outliers are listed below:

Mol	Chain	Res	Type	RSRZ
1	A	33	GLY	6.1
1	A	73	PHE	5.0
1	A	189	VAL	3.8
1	A	74	GLN	3.1
1	A	68	LEU	2.9
1	A	67	LEU	2.8
1	A	69	PRO	2.4
1	A	187	THR	2.4

6.2 Non-standard residues in protein, DNA, RNA chains [i](#)

There are no non-standard protein/DNA/RNA residues in this entry.

6.3 Carbohydrates [i](#)

There are no carbohydrates in this entry.

6.4 Ligands [i](#)

In the following table, the Atoms column lists the number of modelled atoms in the group and the number defined in the chemical component dictionary. LLDF column lists the quality of electron density of the group with respect to its neighbouring residues in protein, DNA or RNA chains. The B-factors column lists the minimum, median, 95th percentile and maximum values of B factors of atoms in the group. The column labelled ‘Q< 0.9’ lists the number of atoms with occupancy less than 0.9.

Mol	Type	Chain	Res	Atoms	RSCC	RSR	LLDF	B-factors(\AA^2)	Q<0.9
2	ORO	A	1	11/11	0.99	0.07	0.19	3,6,10,12	0
4	MDY	A	2	24/24	0.97	0.09	-0.35	12,18,23,25	0
3	FMN	A	398	31/31	0.99	0.07	-0.58	2,4,7,9	0

6.5 Other polymers [i](#)

There are no such residues in this entry.