



Full wwPDB X-ray Structure Validation Report ⓘ

Feb 13, 2017 – 08:41 pm GMT

PDB ID : 2G1R
Title : Ketopiperazine-Based Renin Inhibitors: Optimization of the C Ring
Authors : Holsworth, D.D.; Jalaiea, M.; Zhanga, E.; Mcconnella, P.
Deposited on : 2006-02-14
Resolution : 2.42 Å(reported)

This is a Full wwPDB X-ray Structure Validation Report for a publicly released PDB entry.

We welcome your comments at validation@mail.wwpdb.org

A user guide is available at

<http://wwpdb.org/validation/2016/XrayValidationReportHelp>

with specific help available everywhere you see the ⓘ symbol.

The following versions of software and data (see [references ⓘ](#)) were used in the production of this report:

MolProbity : 4.02b-467
Mogul : 1.7.2 (RC1), CSD as538be (2017)
Xtriage (Phenix) : 1.9-1692
EDS : trunk28620
Percentile statistics : 20161228.v01 (using entries in the PDB archive December 28th 2016)
Refmac : 5.8.0135
CCP4 : 6.5.0
Ideal geometry (proteins) : Engh & Huber (2001)
Ideal geometry (DNA, RNA) : Parkinson et al. (1996)
Validation Pipeline (wwPDB-VP) : recalc28949

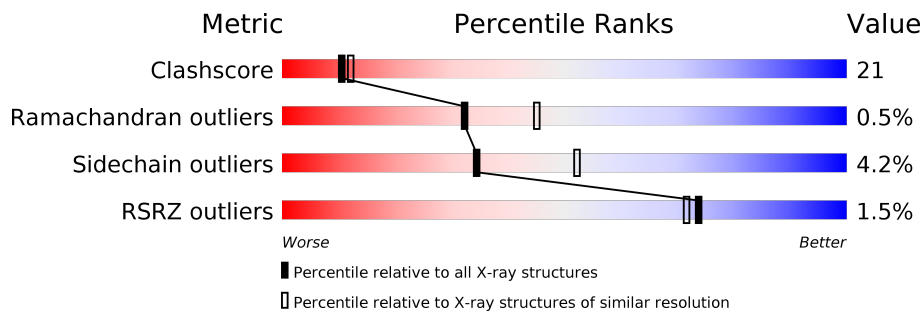
1 Overall quality at a glance

The following experimental techniques were used to determine the structure:

X-RAY DIFFRACTION

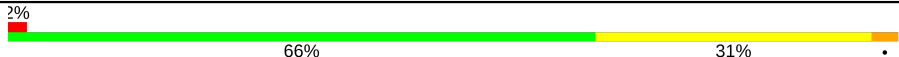
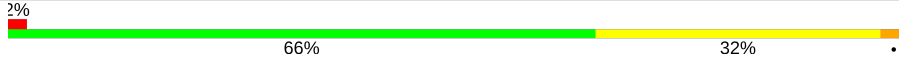
The reported resolution of this entry is 2.42 Å.

Percentile scores (ranging between 0-100) for global validation metrics of the entry are shown in the following graphic. The table shows the number of entries on which the scores are based.



Metric	Whole archive (#Entries)	Similar resolution (#Entries, resolution range(Å))
Clashscore	112137	4241 (2.44-2.40)
Ramachandran outliers	110173	4178 (2.44-2.40)
Sidechain outliers	110143	4179 (2.44-2.40)
RSRZ outliers	101464	3740 (2.44-2.40)

The table below summarises the geometric issues observed across the polymeric chains and their fit to the electron density. The red, orange, yellow and green segments on the lower bar indicate the fraction of residues that contain outliers for ≥ 3 , 2, 1 and 0 types of geometric quality criteria. A grey segment represents the fraction of residues that are not modelled. The numeric value for each fraction is indicated below the corresponding segment, with a dot representing fractions $\leq 5\%$. The upper red bar (where present) indicates the fraction of residues that have poor fit to the electron density. The numeric value is given above the bar.

Mol	Chain	Length	Quality of chain
1	A	333	 2% 66% 31% •
1	B	333	 2% 66% 32% •

2 Entry composition [i](#)

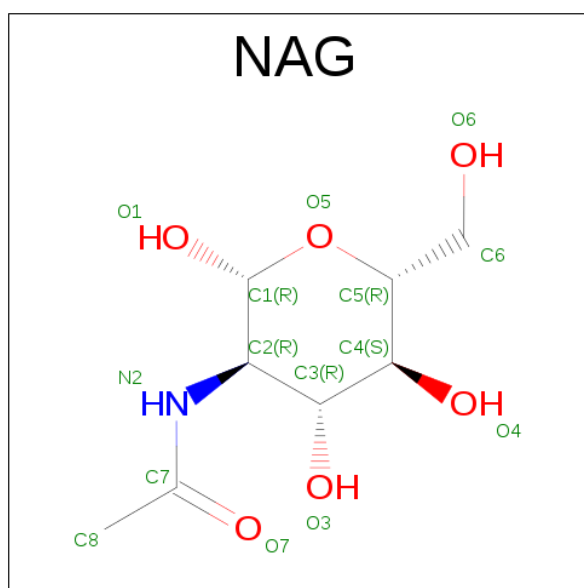
There are 4 unique types of molecules in this entry. The entry contains 5600 atoms, of which 0 are hydrogens and 0 are deuteriums.

In the tables below, the ZeroOcc column contains the number of atoms modelled with zero occupancy, the AltConf column contains the number of residues with at least one atom in alternate conformation and the Trace column contains the number of residues modelled with at most 2 atoms.

- Molecule 1 is a protein called Renin.

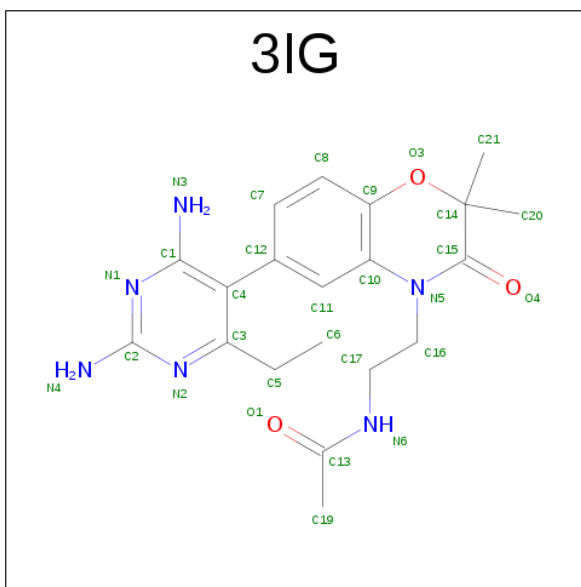
Mol	Chain	Residues	Atoms					ZeroOcc	AltConf	Trace
1	A	333	Total	C	N	O	S	0	0	0
			2572	1642	416	500	14			
1	B	333	Total	C	N	O	S	0	0	0
			2572	1642	416	500	14			

- Molecule 2 is SUGAR (N-ACETYL-D-GLUCOSAMINE) (three-letter code: NAG) (formula: $C_8H_{15}NO_6$).



Mol	Chain	Residues	Atoms				ZeroOcc	AltConf
2	A	1	Total	C	N	O	0	0
			14	8	1	5		
2	B	1	Total	C	N	O	0	0
			14	8	1	5		

- Molecule 3 is N-{2-[6-(2,4-DIAMINO-6-ETHYLPYRIMIDIN-5-YL)-2,2-DIMETHYL-3-OXO-2,3-DIHYDRO-4H-1,4-BENZOXAZIN-4-YL]ETHYL}ACETAMIDE (three-letter code: 3IG) (formula: $C_{20}H_{26}N_6O_3$).



Mol	Chain	Residues	Atoms				ZeroOcc	AltConf
3	A	1	Total	C	N	O	0	0
			29	20	6	3		
3	B	1	Total	C	N	O	0	0
			29	20	6	3		

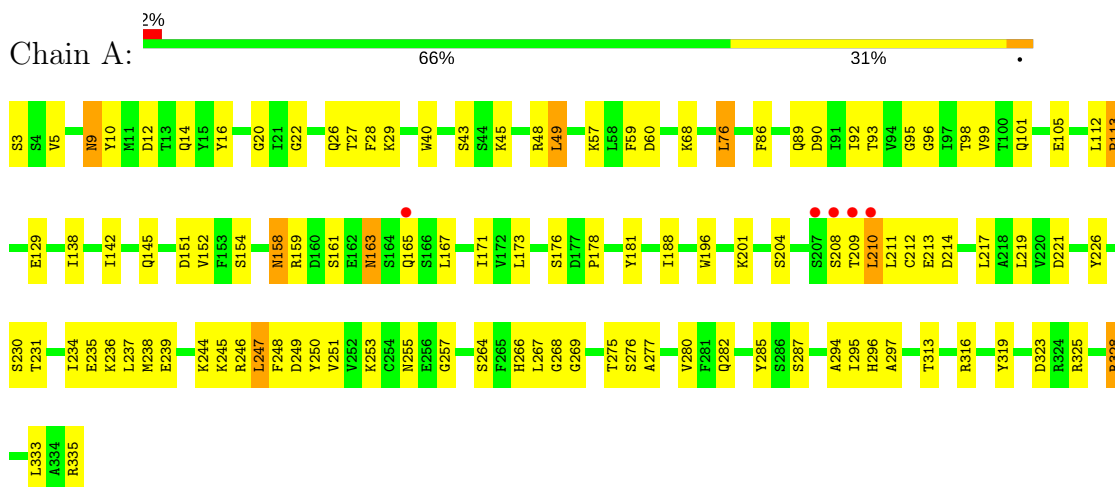
- Molecule 4 is water.

Mol	Chain	Residues	Atoms		ZeroOcc	AltConf
4	A	195	Total	O	0	0
			195	195		
4	B	175	Total	O	0	0
			175	175		

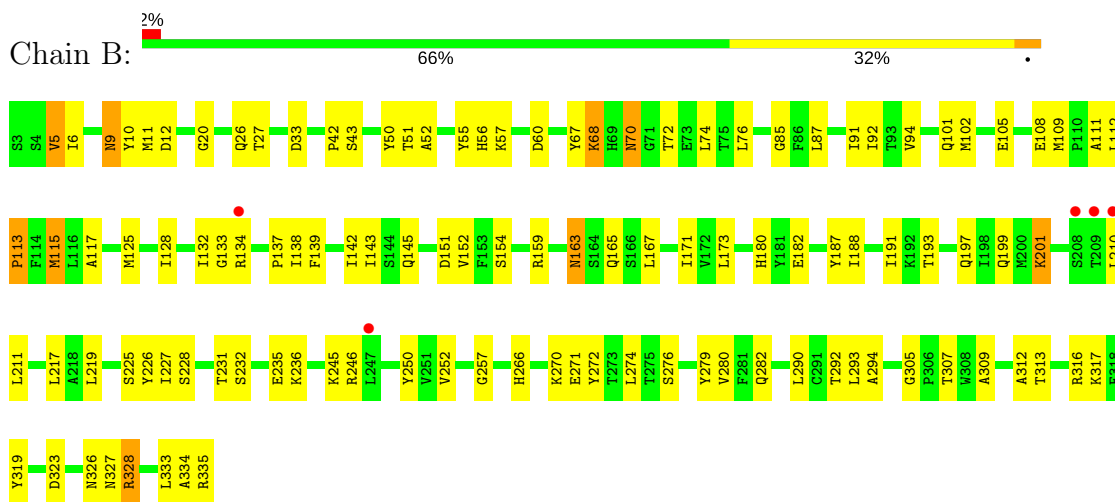
3 Residue-property plots [i](#)

These plots are drawn for all protein, RNA and DNA chains in the entry. The first graphic for a chain summarises the proportions of the various outlier classes displayed in the second graphic. The second graphic shows the sequence view annotated by issues in geometry and electron density. Residues are color-coded according to the number of geometric quality criteria for which they contain at least one outlier: green = 0, yellow = 1, orange = 2 and red = 3 or more. A red dot above a residue indicates a poor fit to the electron density ($RSRZ > 2$). Stretches of 2 or more consecutive residues without any outlier are shown as a green connector. Residues present in the sample, but not in the model, are shown in grey.

• Molecule 1: Renin



• Molecule 1: Renin



4 Data and refinement statistics

Property	Value	Source
Space group	P 21 3	Depositor
Cell constants a, b, c, α , β , γ	141.75Å 141.75Å 141.75Å 90.00° 90.00° 90.00°	Depositor
Resolution (Å)	50.00 – 2.42 47.25 – 2.42	Depositor EDS
% Data completeness (in resolution range)	(Not available) (50.00-2.42) 96.9 (47.25-2.42)	Depositor EDS
R_{merge}	(Not available)	Depositor
R_{sym}	(Not available)	Depositor
$\langle I/\sigma(I) \rangle$ ¹	3.58 (at 2.42Å)	Xtriage
Refinement program	CNS	Depositor
R, R_{free}	0.197 , 0.240 0.190 , (Not available)	Depositor DCC
R_{free} test set	No test flags present.	DCC
Wilson B-factor (Å ²)	34.9	Xtriage
Anisotropy	0.000	Xtriage
Bulk solvent k_{sol} (e/Å ³), B_{sol} (Å ²)	0.32 , 40.5	EDS
L-test for twinning ²	$\langle L \rangle = 0.49$, $\langle L^2 \rangle = 0.33$	Xtriage
Estimated twinning fraction	0.032 for l,-k,h	Xtriage
F_o, F_c correlation	0.93	EDS
Total number of atoms	5600	wwPDB-VP
Average B, all atoms (Å ²)	35.0	wwPDB-VP

Xtriage's analysis on translational NCS is as follows: *The largest off-origin peak in the Patterson function is 2.71% of the height of the origin peak. No significant pseudotranslation is detected.*

¹Intensities estimated from amplitudes.

²Theoretical values of $\langle |L| \rangle$, $\langle L^2 \rangle$ for acentric reflections are 0.5, 0.333 respectively for untwinned datasets, and 0.375, 0.2 for perfectly twinned datasets.

5 Model quality

5.1 Standard geometry

Bond lengths and bond angles in the following residue types are not validated in this section: 3IG, NAG

The Z score for a bond length (or angle) is the number of standard deviations the observed value is removed from the expected value. A bond length (or angle) with $|Z| > 5$ is considered an outlier worth inspection. RMSZ is the root-mean-square of all Z scores of the bond lengths (or angles).

Mol	Chain	Bond lengths		Bond angles	
		RMSZ	$\# Z > 5$	RMSZ	$\# Z > 5$
1	A	0.33	0/2632	0.66	0/3568
1	B	0.31	0/2632	0.62	0/3568
All	All	0.32	0/5264	0.64	0/7136

There are no bond length outliers.

There are no bond angle outliers.

There are no chirality outliers.

There are no planarity outliers.

5.2 Too-close contacts

In the following table, the Non-H and H(model) columns list the number of non-hydrogen atoms and hydrogen atoms in the chain respectively. The H(added) column lists the number of hydrogen atoms added and optimized by MolProbity. The Clashes column lists the number of clashes within the asymmetric unit, whereas Symm-Clashes lists symmetry related clashes.

Mol	Chain	Non-H	H(model)	H(added)	Clashes	Symm-Clashes
1	A	2572	0	2500	98	0
1	B	2572	0	2500	112	0
2	A	14	0	13	1	0
2	B	14	0	13	4	0
3	A	29	0	26	2	0
3	B	29	0	26	2	0
4	A	195	0	0	11	0
4	B	175	0	0	21	0
All	All	5600	0	5078	212	0

The all-atom clashscore is defined as the number of clashes found per 1000 atoms (including hydrogen atoms). The all-atom clashscore for this structure is 21.

All (212) close contacts within the same asymmetric unit are listed below, sorted by their clash magnitude.

Atom-1	Atom-2	Interatomic distance (Å)	Clash overlap (Å)
1:B:5:VAL:HG13	1:B:171:ILE:HG23	1.50	0.92
1:A:158:ASN:HD22	1:A:159:ARG:H	1.15	0.91
1:B:326:ASN:HB2	1:B:328:ARG:HD2	1.56	0.88
1:A:26:GLN:HE22	1:A:60:ASP:H	1.23	0.86
1:A:9:ASN:HD21	1:A:12:ASP:H	1.18	0.85
1:B:87:LEU:HB3	1:B:102:MET:HE1	1.61	0.82
1:A:276:SER:O	1:A:280:VAL:HG13	1.80	0.81
1:A:235:GLU:HG3	4:A:1092:HOH:O	1.81	0.81
1:B:197:GLN:OE1	1:B:307:THR:HG21	1.82	0.80
1:A:9:ASN:C	1:A:9:ASN:HD22	1.83	0.79
1:B:193:THR:HG23	1:B:327:ASN:ND2	1.97	0.77
1:A:158:ASN:ND2	1:A:159:ARG:H	1.81	0.77
1:A:9:ASN:HD22	1:A:10:TYR:N	1.83	0.76
1:A:27:THR:HG22	4:A:1001:HOH:O	1.86	0.76
1:B:42:PRO:HG3	1:B:109:MET:HE1	1.68	0.76
1:A:158:ASN:HD22	1:A:159:ARG:N	1.85	0.75
1:B:9:ASN:HD22	1:B:10:TYR:N	1.86	0.74
1:A:43:SER:HB2	1:A:105:GLU:HB3	1.70	0.74
1:B:193:THR:HG23	1:B:327:ASN:HD21	1.52	0.74
1:B:52:ALA:HA	1:B:115:MET:HE2	1.69	0.73
1:B:5:VAL:HG13	1:B:171:ILE:CG2	2.19	0.72
1:B:72:THR:HB	1:B:87:LEU:HD23	1.72	0.71
1:B:201:LYS:HE2	4:B:1002:HOH:O	1.89	0.71
1:A:99:VAL:HG12	1:A:145:GLN:OE1	1.90	0.70
1:A:152:VAL:HG12	1:A:323:ASP:HA	1.74	0.70
1:B:26:GLN:HE22	1:B:60:ASP:H	1.39	0.70
1:B:9:ASN:HD21	1:B:12:ASP:H	1.38	0.70
1:B:70:ASN:HA	2:B:986:NAG:H82	1.74	0.70
1:B:6:ILE:HG23	1:B:167:LEU:CD1	2.23	0.69
1:B:76:LEU:HD23	1:B:132:ILE:HD12	1.76	0.68
1:B:87:LEU:HB3	1:B:102:MET:CE	2.23	0.68
1:B:257:GLY:HA3	1:B:282:GLN:HE22	1.58	0.68
1:B:210:LEU:HB3	4:B:1003:HOH:O	1.93	0.68
1:B:9:ASN:C	1:B:9:ASN:HD22	1.97	0.68
1:B:11:MET:HE2	4:B:1160:HOH:O	1.94	0.67
2:A:985:NAG:H62	4:A:1079:HOH:O	1.93	0.67
1:A:236:LYS:O	1:A:239:GLU:HG2	1.94	0.66
1:A:275:THR:HG21	4:A:998:HOH:O	1.94	0.66
1:B:201:LYS:HD2	4:B:1061:HOH:O	1.96	0.65
1:B:270:LYS:HG2	1:B:271:GLU:H	1.61	0.65

Continued on next page...

Continued from previous page...

Atom-1	Atom-2	Interatomic distance (Å)	Clash overlap (Å)
1:B:152:VAL:HG12	1:B:323:ASP:HA	1.79	0.64
1:B:326:ASN:CB	1:B:328:ARG:HD2	2.27	0.63
1:B:5:VAL:HB	4:B:1056:HOH:O	2.00	0.62
1:A:239:GLU:HB2	4:A:1155:HOH:O	1.99	0.62
1:A:9:ASN:ND2	1:A:9:ASN:C	2.53	0.62
1:A:45:LYS:HD2	4:A:1089:HOH:O	1.99	0.61
1:B:305:GLY:HA2	1:B:307:THR:HG23	1.81	0.61
1:B:210:LEU:HD13	4:B:1052:HOH:O	2.00	0.61
1:B:227:ILE:HG13	1:B:313:THR:HB	1.81	0.61
1:A:5:VAL:HB	1:A:171:ILE:CG2	2.31	0.60
1:A:9:ASN:HD21	1:A:12:ASP:N	1.95	0.60
1:A:101:GLN:HE22	1:A:138:ILE:HA	1.66	0.60
1:A:167:LEU:H	1:A:167:LEU:HD23	1.66	0.60
1:B:323:ASP:HB3	1:B:328:ARG:HG2	1.82	0.60
1:B:125:MET:HE1	4:B:1132:HOH:O	2.02	0.59
1:A:5:VAL:HB	1:A:171:ILE:HG22	1.85	0.58
1:B:188:ILE:N	1:B:188:ILE:HD12	2.17	0.58
1:A:219:LEU:CD1	1:A:221:ASP:HB2	2.33	0.58
1:A:257:GLY:HA3	1:A:282:GLN:HE22	1.68	0.58
1:B:128:ILE:HG13	1:B:137:PRO:HD3	1.85	0.58
1:B:217:LEU:HB2	1:B:307:THR:CG2	2.34	0.58
1:B:280:VAL:HG22	1:B:293:LEU:HD22	1.84	0.58
1:B:151:ASP:CB	4:B:988:HOH:O	2.52	0.58
1:B:70:ASN:HA	2:B:986:NAG:C8	2.33	0.58
1:A:234:ILE:HG13	1:A:297:ALA:HA	1.85	0.57
1:B:270:LYS:HG2	1:B:271:GLU:N	2.19	0.57
1:B:151:ASP:HB2	4:B:988:HOH:O	2.03	0.57
1:B:43:SER:HB2	1:B:105:GLU:HB3	1.87	0.57
1:A:275:THR:HG22	1:A:277:ALA:H	1.70	0.57
1:B:5:VAL:CG1	1:B:171:ILE:HG23	2.29	0.57
1:B:280:VAL:HG22	1:B:293:LEU:CD2	2.34	0.57
1:B:226:TYR:HB3	1:B:294:ALA:O	2.05	0.57
1:B:132:ILE:HD11	4:B:1124:HOH:O	2.05	0.56
1:B:292:THR:HG22	1:B:293:LEU:N	2.20	0.56
1:A:16:TYR:CE2	1:A:29:LYS:HD2	2.39	0.56
1:B:111:ALA:O	1:B:115:MET:HB2	2.05	0.56
1:A:210:LEU:HD12	1:A:211:LEU:HG	1.88	0.56
3:B:886:3IG:H212	4:B:1106:HOH:O	2.06	0.55
1:A:101:GLN:NE2	1:A:138:ILE:HA	2.20	0.55
1:A:226:TYR:HB3	1:A:294:ALA:O	2.06	0.55
1:A:151:ASP:HB3	1:A:325:ARG:HB2	1.88	0.55

Continued on next page...

Continued from previous page...

Atom-1	Atom-2	Interatomic distance (Å)	Clash overlap (Å)
1:A:208:SER:OG	1:A:210:LEU:HD23	2.06	0.55
1:B:27:THR:O	1:B:57:LYS:HD3	2.06	0.55
1:A:211:LEU:CD2	1:A:236:LYS:HD3	2.37	0.55
1:B:225:SER:O	1:B:312:ALA:HB3	2.07	0.54
1:A:27:THR:O	1:A:57:LYS:HG2	2.08	0.54
1:A:158:ASN:ND2	1:A:159:ARG:N	2.48	0.54
1:B:266:HIS:HB2	4:B:990:HOH:O	2.06	0.54
1:B:42:PRO:HG3	1:B:109:MET:CE	2.37	0.54
1:B:217:LEU:HB2	1:B:307:THR:HG22	1.89	0.53
1:B:101:GLN:NE2	1:B:138:ILE:HA	2.23	0.53
1:B:182:GLU:HG2	1:B:335:ARG:HD3	1.88	0.53
1:A:212:CYS:SG	1:A:212:CYS:O	2.66	0.53
1:B:50:TYR:OH	1:B:108:GLU:HG2	2.09	0.53
1:B:9:ASN:HD21	1:B:12:ASP:N	2.06	0.53
1:A:323:ASP:OD1	1:A:328:ARG:HD2	2.09	0.53
1:B:9:ASN:ND2	1:B:12:ASP:H	2.06	0.53
1:A:9:ASN:ND2	1:A:12:ASP:H	1.98	0.52
1:A:178:PRO:HA	1:A:181:TYR:CE1	2.45	0.52
1:B:133:GLY:O	1:B:134:ARG:HG3	2.10	0.52
1:B:217:LEU:HD12	1:B:307:THR:HG22	1.91	0.51
1:A:219:LEU:HD12	1:A:221:ASP:HB2	1.91	0.51
1:A:27:THR:HG23	1:A:57:LYS:NZ	2.24	0.51
1:A:14:GLN:HA	3:A:885:3IG:O1	2.11	0.51
1:A:201:LYS:NZ	1:A:268:GLY:H	2.08	0.51
1:B:26:GLN:NE2	4:B:1035:HOH:O	2.43	0.51
1:A:208:SER:O	1:A:210:LEU:N	2.44	0.50
1:A:68:LYS:HB2	1:A:89:GLN:HB3	1.94	0.50
1:B:323:ASP:OD1	1:B:328:ARG:HD3	2.10	0.50
1:B:274:LEU:HD22	1:B:317:LYS:HG2	1.93	0.50
1:A:266:HIS:HE1	1:A:269:GLY:HA2	1.77	0.50
1:B:139:PHE:HD2	4:B:1132:HOH:O	1.95	0.50
1:A:246:ARG:CZ	1:A:251:VAL:HG11	2.42	0.49
1:A:176:SER:O	1:A:178:PRO:HD3	2.11	0.49
1:A:245:LYS:HD3	1:A:246:ARG:O	2.13	0.49
1:A:188:ILE:HD13	1:A:267:LEU:HB3	1.93	0.49
1:B:134:ARG:CZ	2:B:986:NAG:H61	2.43	0.49
1:A:45:LYS:HD3	1:A:86:PHE:CZ	2.48	0.49
1:B:133:GLY:C	1:B:134:ARG:HG3	2.33	0.49
1:A:201:LYS:NZ	1:A:268:GLY:N	2.61	0.49
1:A:161:SER:OG	1:A:163:ASN:ND2	2.46	0.48
1:A:275:THR:HG22	1:A:276:SER:N	2.27	0.48

Continued on next page...

Continued from previous page...

Atom-1	Atom-2	Interatomic distance (Å)	Clash overlap (Å)
1:B:142:ILE:O	1:B:145:GLN:HG2	2.13	0.48
1:B:210:LEU:CD2	1:B:210:LEU:H	2.27	0.48
1:B:266:HIS:HD2	1:B:270:LYS:O	1.96	0.48
1:A:231:THR:O	1:A:235:GLU:HG2	2.13	0.48
1:A:246:ARG:HD2	1:A:249:ASP:OD2	2.13	0.47
1:B:70:ASN:O	1:B:87:LEU:O	2.32	0.47
1:A:98:THR:HG23	4:A:1126:HOH:O	2.13	0.47
1:B:6:ILE:HG23	1:B:167:LEU:HD11	1.95	0.47
1:A:154:SER:HB3	1:A:319:TYR:CE1	2.49	0.47
1:A:167:LEU:HD23	4:A:1111:HOH:O	2.13	0.47
1:B:33:ASP:OD1	3:B:886:3IG:N2	2.47	0.47
1:A:213:GLU:O	1:A:214:ASP:HB2	2.14	0.47
1:A:48:ARG:HD3	1:A:48:ARG:HA	1.80	0.47
1:B:270:LYS:HD3	1:B:272:TYR:CZ	2.50	0.47
1:A:113:PRO:HB2	3:A:885:3IG:H213	1.97	0.46
1:B:187:TYR:CD2	1:B:328:ARG:HG3	2.50	0.46
1:A:112:LEU:HA	1:A:113:PRO:HA	1.74	0.46
1:B:9:ASN:C	1:B:9:ASN:ND2	2.64	0.46
1:B:55:TYR:HB2	1:B:115:MET:HE1	1.96	0.46
1:B:67:TYR:O	1:B:68:LYS:HE3	2.16	0.45
1:A:201:LYS:HZ1	1:A:268:GLY:N	2.15	0.45
1:B:210:LEU:HD23	1:B:210:LEU:H	1.80	0.45
1:A:275:THR:CG2	1:A:276:SER:N	2.79	0.45
1:A:255:ASN:HB3	1:A:285:TYR:O	2.17	0.45
1:B:210:LEU:HG	1:B:211:LEU:HG	1.98	0.45
1:B:52:ALA:O	1:B:56:HIS:HD2	2.00	0.45
1:B:245:LYS:HA	1:B:250:TYR:HA	1.99	0.45
1:A:237:LEU:C	1:A:237:LEU:HD23	2.38	0.45
1:B:276:SER:HA	1:B:279:TYR:CE2	2.52	0.44
1:A:163:ASN:HD22	1:A:163:ASN:C	2.18	0.44
1:B:56:HIS:HE1	1:B:117:ALA:O	2.00	0.44
1:A:173:LEU:N	1:A:173:LEU:HD12	2.32	0.44
1:A:211:LEU:HD21	1:A:236:LYS:HD3	1.99	0.44
1:A:28:PHE:CE1	1:A:57:LYS:HG3	2.52	0.44
1:A:201:LYS:HZ1	1:A:268:GLY:H	1.66	0.44
1:B:187:TYR:C	1:B:188:ILE:HD12	2.38	0.44
1:B:91:ILE:O	1:B:91:ILE:HG13	2.17	0.44
1:B:210:LEU:HD23	1:B:210:LEU:N	2.33	0.43
1:B:270:LYS:HG2	4:B:1027:HOH:O	2.17	0.43
1:B:333:LEU:HD13	1:B:334:ALA:O	2.18	0.43
1:B:228:SER:OG	1:B:309:ALA:HB3	2.18	0.43

Continued on next page...

Continued from previous page...

Atom-1	Atom-2	Interatomic distance (Å)	Clash overlap (Å)
1:B:154:SER:HB3	1:B:319:TYR:CE1	2.54	0.43
1:A:244:LYS:HZ1	1:A:253:LYS:HD2	1.82	0.43
1:B:163:ASN:ND2	4:B:1158:HOH:O	2.50	0.43
1:B:231:THR:O	1:B:235:GLU:HG3	2.17	0.43
1:B:85:GLY:HA3	1:B:105:GLU:O	2.18	0.43
1:B:173:LEU:HD22	4:B:1132:HOH:O	2.18	0.43
1:B:52:ALA:HA	1:B:115:MET:CE	2.43	0.43
1:B:20:GLY:O	1:B:92:ILE:HA	2.19	0.43
1:B:274:LEU:CD2	1:B:317:LYS:HG2	2.48	0.43
1:A:20:GLY:O	1:A:92:ILE:HA	2.19	0.43
1:B:180:HIS:HE1	4:B:1104:HOH:O	2.01	0.43
1:A:99:VAL:HG11	1:A:142:ILE:HG12	2.01	0.43
1:A:295:ILE:C	1:A:296:HIS:HD2	2.22	0.42
1:A:3:SER:HB3	1:A:95:GLY:O	2.19	0.42
1:A:10:TYR:HB3	1:A:14:GLN:HB2	2.00	0.42
1:A:49:LEU:HD12	1:A:49:LEU:HA	1.91	0.42
1:B:227:ILE:HA	1:B:309:ALA:O	2.20	0.42
1:A:201:LYS:HE3	1:A:269:GLY:H	1.85	0.42
1:A:129:GLU:N	1:A:129:GLU:OE1	2.50	0.42
1:B:11:MET:O	1:B:12:ASP:HB2	2.19	0.42
1:A:40:TRP:CD1	1:A:76:LEU:HD23	2.54	0.42
1:B:159:ARG:HG2	1:B:316:ARG:HG2	2.02	0.42
1:A:313:THR:HA	1:A:316:ARG:NH2	2.35	0.42
1:A:335:ARG:HG2	4:A:1164:HOH:O	2.19	0.42
1:B:232:SER:O	1:B:236:LYS:HG3	2.19	0.42
1:A:188:ILE:HG12	1:A:268:GLY:HA3	2.02	0.41
1:A:93:THR:HG22	4:A:1053:HOH:O	2.20	0.41
1:B:70:ASN:HB2	4:B:1039:HOH:O	2.19	0.41
1:B:134:ARG:NH2	2:B:986:NAG:H61	2.35	0.41
1:A:211:LEU:HD23	1:A:236:LYS:HD3	2.02	0.41
1:B:112:LEU:HA	1:B:113:PRO:HA	1.66	0.41
1:B:191:ILE:HD11	1:B:199:GLN:N	2.36	0.41
1:B:51:THR:O	1:B:115:MET:HE3	2.21	0.41
1:A:230:SER:O	1:A:234:ILE:HG12	2.21	0.41
1:A:238:MET:HG3	1:A:250:TYR:CE2	2.56	0.41
1:A:96:GLY:C	4:A:1179:HOH:O	2.58	0.41
1:B:55:TYR:HB2	1:B:115:MET:CE	2.51	0.41
1:A:255:ASN:OD1	1:A:287:SER:HA	2.21	0.41
1:B:252:VAL:HG23	4:B:1043:HOH:O	2.20	0.41
1:B:139:PHE:O	1:B:143:ILE:HG12	2.21	0.41
1:A:173:LEU:CD1	1:A:173:LEU:N	2.84	0.41

Continued on next page...

Continued from previous page...

Atom-1	Atom-2	Interatomic distance (Å)	Clash overlap (Å)
1:A:28:PHE:CZ	1:A:59:PHE:HB2	2.56	0.41
1:B:292:THR:CG2	1:B:293:LEU:N	2.83	0.41
1:A:196:TRP:O	1:A:219:LEU:HD22	2.22	0.40
1:A:204:SER:OG	1:A:264:SER:HB2	2.21	0.40
1:B:217:LEU:HB2	1:B:307:THR:HB	2.03	0.40
1:B:94:VAL:HG12	4:B:1056:HOH:O	2.21	0.40
1:A:22:GLY:HA2	1:A:90:ASP:CG	2.42	0.40
1:A:247:LEU:HD13	1:A:248:PHE:CZ	2.57	0.40

There are no symmetry-related clashes.

5.3 Torsion angles [i](#)

5.3.1 Protein backbone [i](#)

In the following table, the Percentiles column shows the percent Ramachandran outliers of the chain as a percentile score with respect to all X-ray entries followed by that with respect to entries of similar resolution.

The Analysed column shows the number of residues for which the backbone conformation was analysed, and the total number of residues.

Mol	Chain	Analysed	Favoured	Allowed	Outliers	Percentiles	
1	A	331/333 (99%)	321 (97%)	9 (3%)	1 (0%)	44	59
1	B	331/333 (99%)	313 (95%)	16 (5%)	2 (1%)	28	40
All	All	662/666 (99%)	634 (96%)	25 (4%)	3 (0%)	32	45

All (3) Ramachandran outliers are listed below:

Mol	Chain	Res	Type
1	B	70	ASN
1	B	246	ARG
1	A	209	THR

5.3.2 Protein sidechains [i](#)

In the following table, the Percentiles column shows the percent sidechain outliers of the chain as a percentile score with respect to all X-ray entries followed by that with respect to entries of similar resolution.

The Analysed column shows the number of residues for which the sidechain conformation was analysed, and the total number of residues.

Mol	Chain	Analysed	Rotameric	Outliers	Percentiles	
1	A	284/284 (100%)	272 (96%)	12 (4%)	34	52
1	B	284/284 (100%)	272 (96%)	12 (4%)	34	52
All	All	568/568 (100%)	544 (96%)	24 (4%)	34	52

All (24) residues with a non-rotameric sidechain are listed below:

Mol	Chain	Res	Type
1	A	9	ASN
1	A	49	LEU
1	A	76	LEU
1	A	113	PRO
1	A	158	ASN
1	A	163	ASN
1	A	165	GLN
1	A	210	LEU
1	A	217	LEU
1	A	247	LEU
1	A	328	ARG
1	A	333	LEU
1	B	5	VAL
1	B	9	ASN
1	B	68	LYS
1	B	74	LEU
1	B	113	PRO
1	B	115	MET
1	B	163	ASN
1	B	165	GLN
1	B	201	LYS
1	B	219	LEU
1	B	290	LEU
1	B	328	ARG

Some sidechains can be flipped to improve hydrogen bonding and reduce clashes. All (27) such sidechains are listed below:

Mol	Chain	Res	Type
1	A	9	ASN
1	A	26	GLN
1	A	101	GLN

Continued on next page...

Continued from previous page...

Mol	Chain	Res	Type
1	A	141	ASN
1	A	145	GLN
1	A	158	ASN
1	A	165	GLN
1	A	170	GLN
1	A	184	ASN
1	A	189	ASN
1	A	197	GLN
1	A	199	GLN
1	A	266	HIS
1	A	282	GLN
1	A	296	HIS
1	A	326	ASN
1	B	9	ASN
1	B	26	GLN
1	B	56	HIS
1	B	101	GLN
1	B	141	ASN
1	B	145	GLN
1	B	163	ASN
1	B	189	ASN
1	B	266	HIS
1	B	282	GLN
1	B	327	ASN

5.3.3 RNA [i](#)

There are no RNA molecules in this entry.

5.4 Non-standard residues in protein, DNA, RNA chains [i](#)

There are no non-standard protein/DNA/RNA residues in this entry.

5.5 Carbohydrates [i](#)

There are no carbohydrates in this entry.

5.6 Ligand geometry [i](#)

4 ligands are modelled in this entry.

In the following table, the Counts columns list the number of bonds (or angles) for which Mogul statistics could be retrieved, the number of bonds (or angles) that are observed in the model and the number of bonds (or angles) that are defined in the chemical component dictionary. The Link column lists molecule types, if any, to which the group is linked. The Z score for a bond length (or angle) is the number of standard deviations the observed value is removed from the expected value. A bond length (or angle) with $|Z| > 2$ is considered an outlier worth inspection. RMSZ is the root-mean-square of all Z scores of the bond lengths (or angles).

Mol	Type	Chain	Res	Link	Bond lengths			Bond angles		
					Counts	RMSZ	$\# Z > 2$	Counts	RMSZ	$\# Z > 2$
3	3IG	A	885	-	30,31,31	1.07	1 (3%)	40,46,46	1.56	6 (15%)
2	NAG	A	985	1	14,14,15	0.51	0	15,19,21	0.90	1 (6%)
3	3IG	B	886	-	30,31,31	1.03	2 (6%)	40,46,46	1.65	6 (15%)
2	NAG	B	986	1	14,14,15	0.54	0	15,19,21	0.71	0

In the following table, the Chirals column lists the number of chiral outliers, the number of chiral centers analysed, the number of these observed in the model and the number defined in the chemical component dictionary. Similar counts are reported in the Torsion and Rings columns. '-' means no outliers of that kind were identified.

Mol	Type	Chain	Res	Link	Chirals	Torsions	Rings
3	3IG	A	885	-	-	0/12/31/31	0/3/3/3
2	NAG	A	985	1	-	0/6/23/26	0/1/1/1
3	3IG	B	886	-	-	0/12/31/31	0/3/3/3
2	NAG	B	986	1	-	0/6/23/26	0/1/1/1

All (3) bond length outliers are listed below:

Mol	Chain	Res	Type	Atoms	Z	Observed(Å)	Ideal(Å)
3	B	886	3IG	C8-C9	2.07	1.43	1.39
3	B	886	3IG	C8-C7	2.52	1.43	1.38
3	A	885	3IG	C8-C7	2.70	1.43	1.38

All (13) bond angle outliers are listed below:

Mol	Chain	Res	Type	Atoms	Z	Observed(°)	Ideal(°)
3	B	886	3IG	C11-C12-C4	-4.02	114.05	120.58
3	A	885	3IG	C11-C12-C4	-3.71	114.55	120.58
3	A	885	3IG	C4-C3-N2	-3.12	119.80	123.71
3	B	886	3IG	C4-C3-N2	-2.98	119.98	123.71
2	A	985	NAG	C2-N2-C7	-2.28	119.61	122.94
3	B	886	3IG	C4-C1-N1	2.19	123.72	122.49
3	A	885	3IG	C4-C1-N1	2.45	123.87	122.49
3	A	885	3IG	C12-C11-C10	2.69	124.06	119.65

Continued on next page...

Continued from previous page...

Mol	Chain	Res	Type	Atoms	Z	Observed(°)	Ideal(°)
3	B	886	3IG	C12-C11-C10	2.91	124.42	119.65
3	A	885	3IG	C7-C12-C4	3.44	126.53	120.79
3	B	886	3IG	C7-C12-C4	3.83	127.19	120.79
3	A	885	3IG	C2-N2-C3	4.85	120.06	116.31
3	B	886	3IG	C2-N2-C3	5.25	120.37	116.31

There are no chirality outliers.

There are no torsion outliers.

There are no ring outliers.

4 monomers are involved in 9 short contacts:

Mol	Chain	Res	Type	Clashes	Symm-Clashes
3	A	885	3IG	2	0
2	A	985	NAG	1	0
3	B	886	3IG	2	0
2	B	986	NAG	4	0

5.7 Other polymers [i](#)

There are no such residues in this entry.

5.8 Polymer linkage issues [i](#)

There are no chain breaks in this entry.

6 Fit of model and data [i](#)

6.1 Protein, DNA and RNA chains [i](#)

In the following table, the column labelled ‘#RSRZ > 2’ contains the number (and percentage) of RSRZ outliers, followed by percent RSRZ outliers for the chain as percentile scores relative to all X-ray entries and entries of similar resolution. The OWAB column contains the minimum, median, 95th percentile and maximum values of the occupancy-weighted average B-factor per residue. The column labelled ‘Q < 0.9’ lists the number of (and percentage) of residues with an average occupancy less than 0.9.

Mol	Chain	Analysed	<RSRZ>	#RSRZ>2	OWAB(Å ²)	Q<0.9
1	A	333/333 (100%)	-0.33	5 (1%) 74 71	18, 31, 51, 76	0
1	B	333/333 (100%)	-0.10	5 (1%) 74 71	21, 37, 60, 78	0
All	All	666/666 (100%)	-0.21	10 (1%) 74 71	18, 33, 57, 78	0

All (10) RSRZ outliers are listed below:

Mol	Chain	Res	Type	RSRZ
1	A	209	THR	7.6
1	A	208	SER	6.6
1	B	210	LEU	5.7
1	A	207	SER	4.0
1	B	208	SER	3.0
1	B	247	LEU	2.9
1	A	210	LEU	2.7
1	B	209	THR	2.3
1	B	134	ARG	2.3
1	A	165	GLN	2.1

6.2 Non-standard residues in protein, DNA, RNA chains [i](#)

There are no non-standard protein/DNA/RNA residues in this entry.

6.3 Carbohydrates [i](#)

There are no carbohydrates in this entry.

6.4 Ligands [i](#)

In the following table, the Atoms column lists the number of modelled atoms in the group and the number defined in the chemical component dictionary. LLDF column lists the quality of electron density of the group with respect to its neighbouring residues in protein, DNA or RNA chains. The B-factors column lists the minimum, median, 95th percentile and maximum values of B factors of atoms in the group. The column labelled 'Q< 0.9' lists the number of atoms with occupancy less than 0.9.

Mol	Type	Chain	Res	Atoms	RSCC	RSR	LLDF	B-factors(Å ²)	Q<0.9
3	3IG	A	885	29/29	0.95	0.12	0.26	17,21,25,26	0
2	NAG	B	986	14/15	0.81	0.23	0.23	69,71,74,76	0
3	3IG	B	886	29/29	0.93	0.14	-0.02	25,28,33,34	0
2	NAG	A	985	14/15	0.87	0.13	-	43,46,51,54	0

6.5 Other polymers [i](#)

There are no such residues in this entry.