



Full wwPDB X-ray Structure Validation Report ⓘ

Feb 13, 2017 – 03:13 am GMT

PDB ID : 2G41
Title : Crystal structure of the complex of sheep signalling glycoprotein with chitin trimer at 3.0Å resolution
Authors : Srivastava, D.B.; Ethayathulla, A.S.; Kumar, J.; Bhushan, A.; Sharma, S.; Singh, T.P.
Deposited on : 2006-02-21
Resolution : 3.00 Å(reported)

This is a Full wwPDB X-ray Structure Validation Report for a publicly released PDB entry.

We welcome your comments at validation@mail.wwpdb.org

A user guide is available at

<http://wwpdb.org/validation/2016/XrayValidationReportHelp>

with specific help available everywhere you see the ⓘ symbol.

The following versions of software and data (see [references ⓘ](#)) were used in the production of this report:

MolProbity	:	4.02b-467
Mogul	:	1.7.2 (RC1), CSD as538be (2017)
Xtriage (Phenix)	:	NOT EXECUTED
EDS	:	NOT EXECUTED
Percentile statistics	:	20161228.v01 (using entries in the PDB archive December 28th 2016)
Ideal geometry (proteins)	:	Engh & Huber (2001)
Ideal geometry (DNA, RNA)	:	Parkinson et al. (1996)
Validation Pipeline (wwPDB-VP)	:	recalc28949

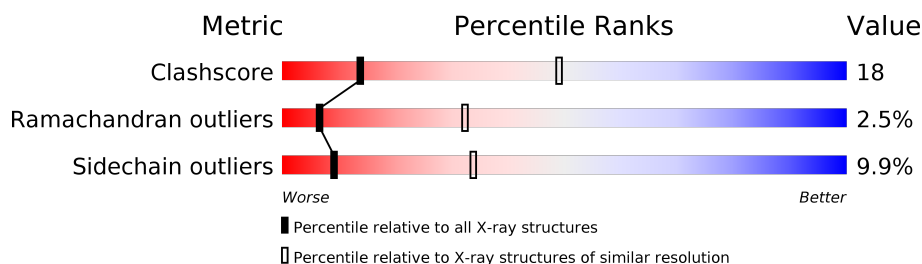
1 Overall quality at a glance

The following experimental techniques were used to determine the structure:

X-RAY DIFFRACTION

The reported resolution of this entry is 3.00 Å.

Percentile scores (ranging between 0-100) for global validation metrics of the entry are shown in the following graphic. The table shows the number of entries on which the scores are based.



Metric	Whole archive (#Entries)	Similar resolution (#Entries, resolution range(Å))
Clashscore	112137	2037 (3.00-3.00)
Ramachandran outliers	110173	1973 (3.00-3.00)
Sidechain outliers	110143	1976 (3.00-3.00)

The table below summarises the geometric issues observed across the polymeric chains and their fit to the electron density. The red, orange, yellow and green segments on the lower bar indicate the fraction of residues that contain outliers for ≥ 3 , 2, 1 and 0 types of geometric quality criteria. A grey segment represents the fraction of residues that are not modelled. The numeric value for each fraction is indicated below the corresponding segment, with a dot representing fractions $\leq 5\%$. The upper red bar (where present) indicates the fraction of residues that have poor fit to the electron density. The numeric value is given above the bar.

Note EDS was not executed.

Mol	Chain	Length	Quality of chain
1	A	361	

The following table lists non-polymeric compounds, carbohydrate monomers and non-standard residues in protein, DNA, RNA chains that are outliers for geometric or electron-density-fit criteria:

Mol	Type	Chain	Res	Chirality	Geometry	Clashes	Electron density
4	NAG	A	366	-	-	X	-
4	NAG	A	367	-	-	X	-

2 Entry composition [i](#)

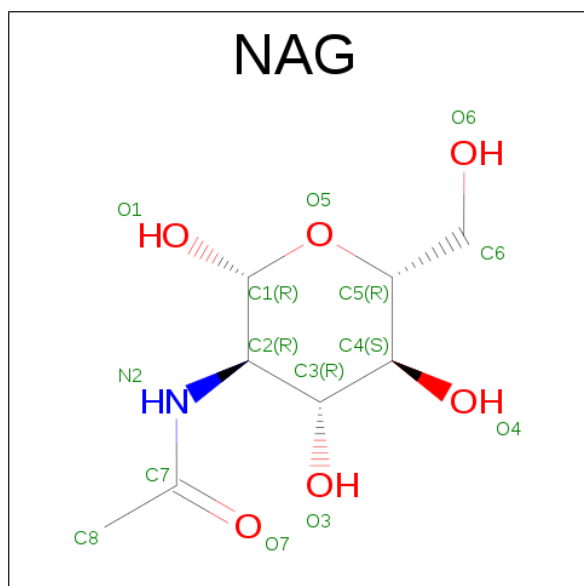
There are 5 unique types of molecules in this entry. The entry contains 3060 atoms, of which 0 are hydrogens and 0 are deuteriums.

In the tables below, the ZeroOcc column contains the number of atoms modelled with zero occupancy, the AltConf column contains the number of residues with at least one atom in alternate conformation and the Trace column contains the number of residues modelled with at most 2 atoms.

- Molecule 1 is a protein called SIGNAL PROCESSING PROTEIN.

Mol	Chain	Residues	Atoms					ZeroOcc	AltConf	Trace
1	A	361	Total	C	N	O	S	0	0	0
			2869	1832	499	529	9			

- Molecule 2 is SUGAR (N-ACETYL-D-GLUCOSAMINE) (three-letter code: NAG) (formula: $C_8H_{15}NO_6$).



Mol	Chain	Residues	Atoms				ZeroOcc	AltConf
2	A	1	Total	C	N	O	0	0
			14	8	1	5		

- Molecule 3 is a polymer of unknown type called SUGAR (2-MER).

Mol	Chain	Residues	Atoms				ZeroOcc	AltConf
3	A	2	Total	C	N	O	0	0
			26	14	1	11		

- Molecule 4 is a polymer of unknown type called SUGAR (3-MER).

Mol	Chain	Residues	Atoms				ZeroOcc	AltConf
4	A	3	Total	C	N	O	0	0
			43	24	3	16		

- Molecule 5 is water.

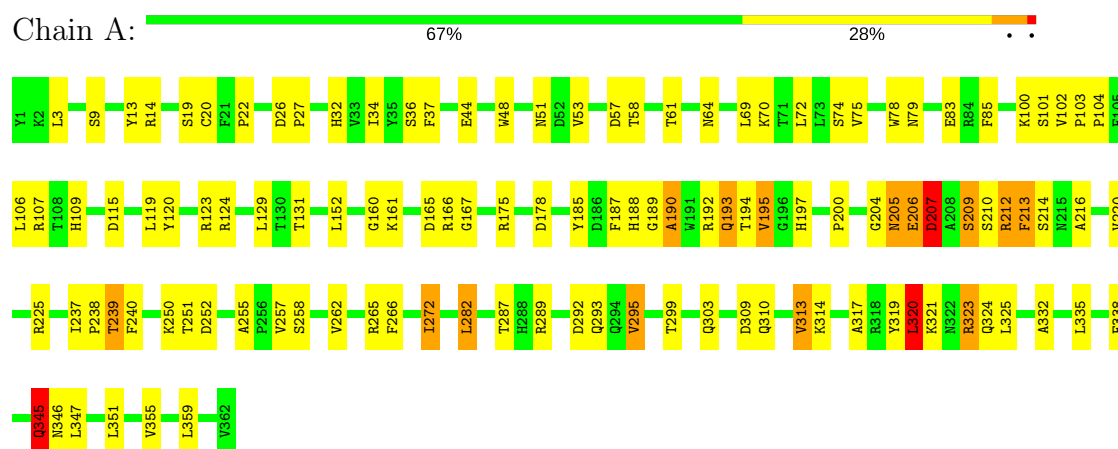
Mol	Chain	Residues	Atoms		ZeroOcc	AltConf
5	A	108	Total	O	0	0
			108	108		

3 Residue-property plots

These plots are drawn for all protein, RNA and DNA chains in the entry. The first graphic for a chain summarises the proportions of the various outlier classes displayed in the second graphic. The second graphic shows the sequence view annotated by issues in geometry and electron density. Residues are color-coded according to the number of geometric quality criteria for which they contain at least one outlier: green = 0, yellow = 1, orange = 2 and red = 3 or more. A red dot above a residue indicates a poor fit to the electron density ($RSRZ > 2$). Stretches of 2 or more consecutive residues without any outlier are shown as a green connector. Residues present in the sample, but not in the model, are shown in grey.

Note EDS was not executed.

• Molecule 1: SIGNAL PROCESSING PROTEIN



4 Data and refinement statistics

Xtriage (Phenix) and EDS were not executed - this section is therefore incomplete.

Property	Value	Source
Space group	P 21 21 21	Depositor
Cell constants a, b, c, α , β , γ	62.81Å 66.39Å 107.60Å 90.00° 90.00° 90.00°	Depositor
Resolution (Å)	19.83 – 3.00	Depositor
% Data completeness (in resolution range)	96.0 (19.83-3.00)	Depositor
R_{merge}	(Not available)	Depositor
R_{sym}	0.12	Depositor
Refinement program	CNS 1.1	Depositor
R, R_{free}	0.181 , 0.221	Depositor
Estimated twinning fraction	No twinning to report.	Xtriage
Total number of atoms	3060	wwPDB-VP
Average B, all atoms (Å ²)	39.0	wwPDB-VP

5 Model quality [i](#)

5.1 Standard geometry [i](#)

Bond lengths and bond angles in the following residue types are not validated in this section: BMA, NAG

The Z score for a bond length (or angle) is the number of standard deviations the observed value is removed from the expected value. A bond length (or angle) with $|Z| > 5$ is considered an outlier worth inspection. RMSZ is the root-mean-square of all Z scores of the bond lengths (or angles).

Mol	Chain	Bond lengths		Bond angles	
		RMSZ	$\# Z > 5$	RMSZ	$\# Z > 5$
1	A	0.49	0/2945	0.85	4/3995 (0.1%)

There are no bond length outliers.

All (4) bond angle outliers are listed below:

Mol	Chain	Res	Type	Atoms	Z	Observed(°)	Ideal(°)
1	A	320	LEU	CA-CB-CG	8.49	134.83	115.30
1	A	207	ASP	CA-C-N	-5.93	104.16	117.20
1	A	209	SER	N-CA-C	-5.57	95.97	111.00
1	A	167	GLY	N-CA-C	5.49	126.83	113.10

There are no chirality outliers.

There are no planarity outliers.

5.2 Too-close contacts [i](#)

In the following table, the Non-H and H(model) columns list the number of non-hydrogen atoms and hydrogen atoms in the chain respectively. The H(added) column lists the number of hydrogen atoms added and optimized by MolProbity. The Clashes column lists the number of clashes within the asymmetric unit, whereas Symm-Clashes lists symmetry related clashes.

Mol	Chain	Non-H	H(model)	H(added)	Clashes	Symm-Clashes
1	A	2869	0	2794	92	0
2	A	14	0	13	3	0
3	A	26	0	24	5	0
4	A	43	0	39	20	0
5	A	108	0	0	15	0
All	All	3060	0	2870	102	0

The all-atom clashscore is defined as the number of clashes found per 1000 atoms (including hydrogen atoms). The all-atom clashscore for this structure is 18.

All (102) close contacts within the same asymmetric unit are listed below, sorted by their clash magnitude.

Atom-1	Atom-2	Interatomic distance (Å)	Clash overlap (Å)
2:A:363:NAG:O4	3:A:364:NAG:H1	1.00	1.16
1:A:287:THR:HB	5:A:433:HOH:O	1.68	0.94
1:A:272:ILE:HD11	4:A:366:NAG:H83	1.46	0.94
1:A:206:GLU:HG3	1:A:207:ASP:H	1.30	0.93
1:A:272:ILE:CD1	4:A:366:NAG:H83	1.98	0.93
1:A:79:ASN:OD1	4:A:366:NAG:H62	1.69	0.92
1:A:123:ARG:HD3	5:A:438:HOH:O	1.69	0.91
1:A:185:TYR:HB3	1:A:238:PRO:HG3	1.54	0.89
2:A:363:NAG:C4	3:A:364:NAG:H1	2.06	0.86
1:A:166:ARG:HD3	5:A:417:HOH:O	1.79	0.83
3:A:364:NAG:H61	3:A:365:BMA:O5	1.77	0.83
1:A:204:GLY:HA2	1:A:292:ASP:HB3	1.60	0.82
1:A:239:THR:HG22	1:A:335:LEU:HB2	1.62	0.80
1:A:310:GLN:O	1:A:314:LYS:HG3	1.84	0.77
1:A:323:ARG:HH11	1:A:323:ARG:HG2	1.52	0.74
1:A:272:ILE:CD1	4:A:366:NAG:C8	2.65	0.74
1:A:265:ARG:HD2	1:A:266:PHE:CE1	2.23	0.73
1:A:48:TRP:HB3	5:A:468:HOH:O	1.88	0.72
2:A:363:NAG:HO4	3:A:364:NAG:H1	1.51	0.72
1:A:53:VAL:HG12	1:A:109:HIS:CE1	2.24	0.71
1:A:57:ASP:O	1:A:61:THR:HG23	1.90	0.71
1:A:239:THR:CG2	1:A:335:LEU:HB2	2.23	0.67
1:A:262:VAL:H	1:A:303:GLN:HE22	1.44	0.65
1:A:272:ILE:HD11	4:A:366:NAG:C8	2.21	0.64
1:A:103:PRO:HB2	1:A:104:PRO:HD3	1.78	0.63
1:A:323:ARG:CG	1:A:323:ARG:HH11	2.11	0.63
1:A:44:GLU:HG2	1:A:101:SER:CB	2.28	0.63
1:A:272:ILE:HD13	4:A:366:NAG:C8	2.29	0.62
1:A:44:GLU:HG2	1:A:101:SER:HB2	1.81	0.62
1:A:272:ILE:HD13	4:A:366:NAG:H83	1.81	0.62
1:A:195:VAL:HG23	1:A:257:VAL:HG23	1.82	0.62
1:A:323:ARG:NH1	1:A:323:ARG:HG2	2.12	0.62
1:A:345:GLN:HG2	1:A:345:GLN:O	1.99	0.61
1:A:48:TRP:CZ2	4:A:367:NAG:H81	2.35	0.61
1:A:239:THR:HG21	1:A:332:ALA:O	2.02	0.59
4:A:366:NAG:H61	4:A:367:NAG:HN2	1.68	0.59
1:A:319:TYR:CZ	1:A:323:ARG:HD2	2.38	0.59

Continued on next page...

Continued from previous page...

Atom-1	Atom-2	Interatomic distance (Å)	Clash overlap (Å)
1:A:48:TRP:CE2	4:A:367:NAG:H81	2.37	0.59
1:A:206:GLU:HG3	1:A:207:ASP:N	2.11	0.58
1:A:239:THR:HG23	1:A:239:THR:O	2.04	0.57
1:A:317:ALA:HA	1:A:320:LEU:HD13	1.85	0.57
1:A:20:CYS:HB2	1:A:338:PHE:CZ	2.40	0.57
4:A:367:NAG:H83	5:A:450:HOH:O	2.05	0.57
1:A:237:ILE:HG21	1:A:313:VAL:HG22	1.88	0.56
1:A:239:THR:CG2	1:A:239:THR:O	2.54	0.56
1:A:185:TYR:CB	1:A:238:PRO:HG3	2.33	0.55
1:A:237:ILE:CG2	1:A:313:VAL:HG22	2.37	0.54
1:A:13:TYR:CE2	4:A:368:NAG:H61	2.42	0.54
4:A:366:NAG:C6	4:A:367:NAG:HN2	2.20	0.54
1:A:124:ARG:HG3	1:A:124:ARG:HH11	1.74	0.52
1:A:22:PRO:HB2	1:A:58:THR:CG2	2.40	0.52
1:A:78:TRP:HH2	5:A:472:HOH:O	1.93	0.52
1:A:79:ASN:OD1	4:A:367:NAG:H2	2.09	0.51
1:A:13:TYR:HE2	4:A:368:NAG:H61	1.75	0.51
1:A:320:LEU:HB2	1:A:325:LEU:HD12	1.92	0.51
1:A:195:VAL:HG23	1:A:257:VAL:CG2	2.40	0.50
1:A:197:HIS:O	1:A:200:PRO:HD3	2.11	0.50
1:A:204:GLY:CA	1:A:292:ASP:HB3	2.38	0.50
1:A:187:PHE:HB3	1:A:214:SER:HB3	1.94	0.49
1:A:22:PRO:HB2	1:A:58:THR:HG22	1.94	0.49
1:A:102:VAL:HB	1:A:103:PRO:HD3	1.93	0.49
3:A:364:NAG:H4	3:A:364:NAG:O1	2.12	0.49
1:A:79:ASN:OD1	4:A:367:NAG:C2	2.61	0.48
1:A:188:HIS:HE1	1:A:194:THR:O	1.96	0.48
1:A:124:ARG:NH1	1:A:124:ARG:HG3	2.28	0.48
1:A:189:GLY:O	1:A:190:ALA:C	2.51	0.48
1:A:313:VAL:HG13	1:A:355:VAL:CG2	2.44	0.47
1:A:212:ARG:O	1:A:213:PHE:CD1	2.66	0.47
1:A:152:LEU:HA	1:A:178:ASP:OD2	2.15	0.47
1:A:61:THR:O	1:A:64:ASN:HB2	2.15	0.47
1:A:240:PHE:HB3	1:A:335:LEU:HD13	1.97	0.46
1:A:34:ILE:HG12	1:A:72:LEU:HB2	1.97	0.46
1:A:83:GLU:CD	1:A:83:GLU:H	2.18	0.46
1:A:216:ALA:O	1:A:220:VAL:HG23	2.16	0.46
1:A:160:GLY:HA2	5:A:376:HOH:O	2.16	0.46
1:A:14:ARG:O	1:A:19:SER:HB2	2.16	0.45
1:A:204:GLY:O	1:A:206:GLU:N	2.49	0.45
1:A:200:PRO:HB2	1:A:293:GLN:HB3	1.99	0.45

Continued on next page...

Continued from previous page...

Atom-1	Atom-2	Interatomic distance (Å)	Clash overlap (Å)
1:A:74:SER:HA	1:A:115:ASP:O	2.17	0.44
1:A:165:ASP:HA	5:A:412:HOH:O	2.17	0.44
1:A:324:GLN:HG2	5:A:440:HOH:O	2.16	0.44
4:A:367:NAG:O7	4:A:367:NAG:O3	2.33	0.43
1:A:79:ASN:OD1	4:A:367:NAG:N2	2.52	0.43
1:A:32:HIS:HA	1:A:70:LYS:O	2.19	0.43
1:A:51:ASN:HA	5:A:474:HOH:O	2.18	0.43
1:A:282:LEU:HD12	1:A:282:LEU:HA	1.80	0.42
1:A:289:ARG:NH2	1:A:309:ASP:OD2	2.52	0.42
1:A:250:LYS:HG2	1:A:255:ALA:HB2	2.00	0.42
1:A:61:THR:HG23	5:A:471:HOH:O	2.20	0.42
1:A:36:SER:HA	1:A:37:PHE:HA	1.87	0.42
1:A:225:ARG:HD2	5:A:395:HOH:O	2.20	0.42
4:A:366:NAG:H62	4:A:367:NAG:N2	2.35	0.42
1:A:193:GLN:HG2	1:A:193:GLN:H	1.36	0.41
1:A:197:HIS:NE2	1:A:295:VAL:HB	2.36	0.41
1:A:53:VAL:CG2	5:A:474:HOH:O	2.68	0.41
1:A:321:LYS:CD	5:A:392:HOH:O	2.69	0.41
1:A:119:LEU:HA	1:A:120:TYR:HA	1.87	0.41
1:A:78:TRP:HB2	4:A:366:NAG:O6	2.20	0.41
1:A:26:ASP:HA	1:A:27:PRO:HD3	1.89	0.40
1:A:61:THR:CG2	5:A:471:HOH:O	2.69	0.40
1:A:210:SER:O	1:A:212:ARG:C	2.59	0.40
1:A:192:ARG:HG2	1:A:194:THR:HG22	2.03	0.40

There are no symmetry-related clashes.

5.3 Torsion angles [i](#)

5.3.1 Protein backbone [i](#)

In the following table, the Percentiles column shows the percent Ramachandran outliers of the chain as a percentile score with respect to all X-ray entries followed by that with respect to entries of similar resolution.

The Analysed column shows the number of residues for which the backbone conformation was analysed, and the total number of residues.

Mol	Chain	Analysed	Favoured	Allowed	Outliers	Percentiles	
1	A	359/361 (99%)	329 (92%)	21 (6%)	9 (2%)	6	32

All (9) Ramachandran outliers are listed below:

Mol	Chain	Res	Type
1	A	209	SER
1	A	207	ASP
1	A	346	ASN
1	A	190	ALA
1	A	205	ASN
1	A	206	GLU
1	A	212	ARG
1	A	213	PHE
1	A	345	GLN

5.3.2 Protein sidechains ⓘ

In the following table, the Percentiles column shows the percent sidechain outliers of the chain as a percentile score with respect to all X-ray entries followed by that with respect to entries of similar resolution.

The Analysed column shows the number of residues for which the sidechain conformation was analysed, and the total number of residues.

Mol	Chain	Analysed	Rotameric	Outliers	Percentiles	
1	A	302/302 (100%)	272 (90%)	30 (10%)	9	34

All (30) residues with a non-rotameric sidechain are listed below:

Mol	Chain	Res	Type
1	A	3	LEU
1	A	9	SER
1	A	69	LEU
1	A	75	VAL
1	A	85	PHE
1	A	100	LYS
1	A	106	LEU
1	A	107	ARG
1	A	129	LEU
1	A	131	THR
1	A	161	LYS
1	A	175	ARG
1	A	193	GLN
1	A	195	VAL
1	A	205	ASN
1	A	239	THR

Continued on next page...

Continued from previous page...

Mol	Chain	Res	Type
1	A	251	THR
1	A	252	ASP
1	A	258	SER
1	A	272	ILE
1	A	282	LEU
1	A	295	VAL
1	A	299	THR
1	A	313	VAL
1	A	320	LEU
1	A	323	ARG
1	A	345	GLN
1	A	347	LEU
1	A	351	LEU
1	A	359	LEU

Some sidechains can be flipped to improve hydrogen bonding and reduce clashes. All (6) such sidechains are listed below:

Mol	Chain	Res	Type
1	A	60	ASN
1	A	172	GLN
1	A	288	HIS
1	A	294	GLN
1	A	303	GLN
1	A	315	ASN

5.3.3 RNA [i](#)

There are no RNA molecules in this entry.

5.4 Non-standard residues in protein, DNA, RNA chains [i](#)

There are no non-standard protein/DNA/RNA residues in this entry.

5.5 Carbohydrates [i](#)

5 carbohydrates are modelled in this entry.

In the following table, the Counts columns list the number of bonds (or angles) for which Mogul statistics could be retrieved, the number of bonds (or angles) that are observed in the model and the number of bonds (or angles) that are defined in the chemical component dictionary. The Link

column lists molecule types, if any, to which the group is linked. The Z score for a bond length (or angle) is the number of standard deviations the observed value is removed from the expected value. A bond length (or angle) with $|Z| > 2$ is considered an outlier worth inspection. RMSZ is the root-mean-square of all Z scores of the bond lengths (or angles).

Mol	Type	Chain	Res	Link	Bond lengths			Bond angles		
					Counts	RMSZ	# Z > 2	Counts	RMSZ	# Z > 2
3	NAG	A	364	3,2	15,15,15	1.02	1 (6%)	21,21,21	1.38	4 (19%)
3	BMA	A	365	3	11,11,12	2.23	4 (36%)	13,15,17	2.00	5 (38%)
4	NAG	A	366	4	15,15,15	0.85	1 (6%)	21,21,21	2.12	4 (19%)
4	NAG	A	367	4	14,14,15	1.89	4 (28%)	15,19,21	1.53	2 (13%)
4	NAG	A	368	4	14,14,15	1.00	2 (14%)	15,19,21	2.85	3 (20%)

In the following table, the Chirals column lists the number of chiral outliers, the number of chiral centers analysed, the number of these observed in the model and the number defined in the chemical component dictionary. Similar counts are reported in the Torsion and Rings columns. '-' means no outliers of that kind were identified.

Mol	Type	Chain	Res	Link	Chirals	Torsions	Rings
3	NAG	A	364	3,2	-	0/6/26/26	0/1/1/1
3	BMA	A	365	3	-	0/2/19/22	0/1/1/1
4	NAG	A	366	4	-	0/6/26/26	0/1/1/1
4	NAG	A	367	4	-	0/6/23/26	0/1/1/1
4	NAG	A	368	4	-	1/6/23/26	0/1/1/1

All (12) bond length outliers are listed below:

Mol	Chain	Res	Type	Atoms	Z	Observed(Å)	Ideal(Å)
3	A	365	BMA	C2-C3	-3.32	1.48	1.52
4	A	367	NAG	C6-C5	-2.57	1.43	1.51
3	A	365	BMA	C4-C5	-2.35	1.48	1.53
4	A	367	NAG	O5-C5	-2.11	1.39	1.43
4	A	368	NAG	C1-C2	2.04	1.55	1.52
4	A	368	NAG	C2-N2	2.24	1.50	1.46
4	A	366	NAG	C4-C3	2.27	1.58	1.52
3	A	364	NAG	C4-C3	2.42	1.58	1.52
3	A	365	BMA	C1-C2	2.60	1.58	1.52
4	A	367	NAG	C1-C2	2.83	1.56	1.52
4	A	367	NAG	C4-C3	4.12	1.62	1.52
3	A	365	BMA	O5-C1	4.80	1.51	1.43

All (18) bond angle outliers are listed below:

Mol	Chain	Res	Type	Atoms	Z	Observed(°)	Ideal(°)
4	A	366	NAG	C4-C3-C2	-5.58	102.05	110.33
4	A	366	NAG	C6-C5-C4	-5.36	100.45	113.00
3	A	365	BMA	C3-C4-C5	-3.61	103.85	110.22
3	A	365	BMA	C2-C3-C4	-3.08	105.51	110.88
3	A	365	BMA	C1-C2-C3	-2.87	106.02	109.65
4	A	367	NAG	O7-C7-C8	-2.66	117.22	122.06
3	A	365	BMA	O2-C2-C3	-2.28	105.70	110.17
4	A	366	NAG	O1-C1-O5	-2.18	103.75	110.20
3	A	364	NAG	C4-C3-C2	-2.14	107.15	110.33
3	A	365	BMA	O2-C2-C1	2.35	113.95	109.18
3	A	364	NAG	O1-C1-C2	2.36	114.13	109.22
4	A	366	NAG	O4-C4-C3	2.54	115.89	110.36
3	A	364	NAG	O4-C4-C3	2.55	115.90	110.36
3	A	364	NAG	O5-C1-C2	2.61	112.14	109.52
4	A	367	NAG	C1-C2-N2	2.80	115.27	110.49
4	A	368	NAG	C4-C3-C2	2.81	115.13	111.02
4	A	368	NAG	C2-N2-C7	5.51	130.99	122.94
4	A	368	NAG	C1-C2-N2	8.28	124.64	110.49

There are no chirality outliers.

All (1) torsion outliers are listed below:

Mol	Chain	Res	Type	Atoms
4	A	368	NAG	O7-C7-N2-C2

There are no ring outliers.

5 monomers are involved in 25 short contacts:

Mol	Chain	Res	Type	Clashes	Symm-Clashes
3	A	364	NAG	5	0
3	A	365	BMA	1	0
4	A	366	NAG	11	0
4	A	367	NAG	10	0
4	A	368	NAG	2	0

5.6 Ligand geometry

1 ligand is modelled in this entry.

In the following table, the Counts columns list the number of bonds (or angles) for which Mogul statistics could be retrieved, the number of bonds (or angles) that are observed in the model and the number of bonds (or angles) that are defined in the chemical component dictionary. The Link

column lists molecule types, if any, to which the group is linked. The Z score for a bond length (or angle) is the number of standard deviations the observed value is removed from the expected value. A bond length (or angle) with $|Z| > 2$ is considered an outlier worth inspection. RMSZ is the root-mean-square of all Z scores of the bond lengths (or angles).

Mol	Type	Chain	Res	Link	Bond lengths			Bond angles		
					Counts	RMSZ	$\# Z > 2$	Counts	RMSZ	$\# Z > 2$
2	NAG	A	363	1,3	14,14,15	1.13	2 (14%)	15,19,21	1.35	3 (20%)

In the following table, the Chirals column lists the number of chiral outliers, the number of chiral centers analysed, the number of these observed in the model and the number defined in the chemical component dictionary. Similar counts are reported in the Torsion and Rings columns. '-' means no outliers of that kind were identified.

Mol	Type	Chain	Res	Link	Chirals	Torsions	Rings
2	NAG	A	363	1,3	-	0/6/23/26	0/1/1/1

All (2) bond length outliers are listed below:

Mol	Chain	Res	Type	Atoms	Z	Observed(Å)	Ideal(Å)
2	A	363	NAG	C4-C5	-2.54	1.47	1.53
2	A	363	NAG	C1-C2	2.03	1.55	1.52

All (3) bond angle outliers are listed below:

Mol	Chain	Res	Type	Atoms	Z	Observed(°)	Ideal(°)
2	A	363	NAG	O4-C4-C5	-2.88	102.03	109.28
2	A	363	NAG	C2-N2-C7	-2.74	118.95	122.94
2	A	363	NAG	C1-O5-C5	-2.60	108.58	112.17

There are no chirality outliers.

There are no torsion outliers.

There are no ring outliers.

1 monomer is involved in 3 short contacts:

Mol	Chain	Res	Type	Clashes	Symm-Clashes
2	A	363	NAG	3	0

5.7 Other polymers ⓘ

There are no such residues in this entry.

5.8 Polymer linkage issues ⓘ

There are no chain breaks in this entry.

6 Fit of model and data

6.1 Protein, DNA and RNA chains

EDS was not executed - this section is therefore empty.

6.2 Non-standard residues in protein, DNA, RNA chains

EDS was not executed - this section is therefore empty.

6.3 Carbohydrates

EDS was not executed - this section is therefore empty.

6.4 Ligands

EDS was not executed - this section is therefore empty.

6.5 Other polymers

EDS was not executed - this section is therefore empty.