



# wwPDB X-ray Structure Validation Summary Report ⓘ

Jan 14, 2018 – 10:58 PM EST

PDB ID : 3G42  
Title : Crystal Structure of TACE with Tryptophan Sulfonamide Derivative Inhibitor  
Authors : Xu, W.; Park, K.; Gopalsamy, A.; Aplasca, A.; Zhang, Y.H.; Levin, J.I.  
Deposited on : 2009-02-03  
Resolution : 2.10 Å(reported)

This is a wwPDB X-ray Structure Validation Summary Report for a publicly released PDB entry.

We welcome your comments at [validation@mail.wwpdb.org](mailto:validation@mail.wwpdb.org)

A user guide is available at

<http://wwpdb.org/validation/2016/XrayValidationReportHelp>

with specific help available everywhere you see the ⓘ symbol.

---

The following versions of software and data (see [references ⓘ](#)) were used in the production of this report:

MolProbity : 4.02b-467  
Mogul : 1.7.2 (RC1), CSD as538be (2017)  
Xtriage (Phenix) : 1.9-1692  
EDS : rb-20030736  
Percentile statistics : 20161228.v01 (using entries in the PDB archive December 28th 2016)  
Refmac : 5.8.0135  
CCP4 : 6.5.0  
Ideal geometry (proteins) : Engh & Huber (2001)  
Ideal geometry (DNA, RNA) : Parkinson et al. (1996)  
Validation Pipeline (wwPDB-VP) : rb-20030736

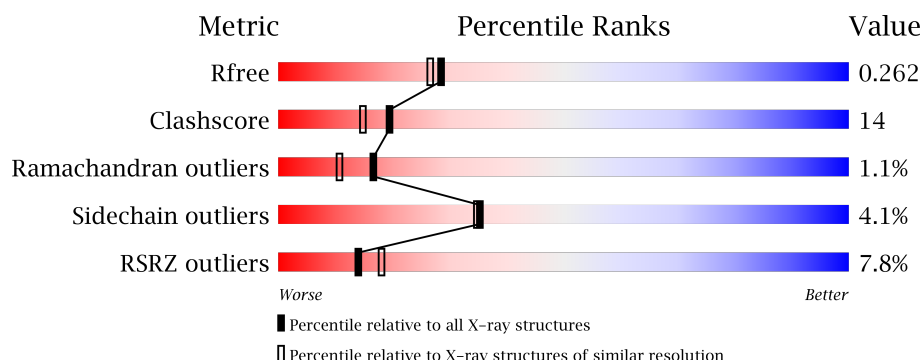
# 1 Overall quality at a glance

The following experimental techniques were used to determine the structure:

## *X-RAY DIFFRACTION*

The reported resolution of this entry is 2.10 Å.

Percentile scores (ranging between 0-100) for global validation metrics of the entry are shown in the following graphic. The table shows the number of entries on which the scores are based.



Metric	Whole archive (#Entries)	Similar resolution (#Entries, resolution range(Å))
$R_{free}$	100719	4243 (2.10-2.10)
Clashscore	112137	4788 (2.10-2.10)
Ramachandran outliers	110173	4740 (2.10-2.10)
Sidechain outliers	110143	4741 (2.10-2.10)
RSRZ outliers	101464	4275 (2.10-2.10)

The table below summarises the geometric issues observed across the polymeric chains and their fit to the electron density. The red, orange, yellow and green segments on the lower bar indicate the fraction of residues that contain outliers for  $\geq 3$ , 2, 1 and 0 types of geometric quality criteria. A grey segment represents the fraction of residues that are not modelled. The numeric value for each fraction is indicated below the corresponding segment, with a dot representing fractions  $\leq 5\%$ . The upper red bar (where present) indicates the fraction of residues that have poor fit to the electron density. The numeric value is given above the bar.

Mol	Chain	Length	Quality of chain
1	A	288	<div> <div>7%</div> <div> <div></div> <div>67%</div> <div>19%</div> <div>•</div> <div>12%</div> </div> </div>
1	B	288	<div> <div>11%</div> <div> <div></div> <div>62%</div> <div>24%</div> <div>•</div> <div>12%</div> </div> </div>
1	C	288	<div> <div>4%</div> <div> <div></div> <div>69%</div> <div>18%</div> <div>•</div> <div>11%</div> </div> </div>
1	D	288	<div> <div>5%</div> <div> <div></div> <div>66%</div> <div>18%</div> <div>•</div> <div>12%</div> </div> </div>

## 2 Entry composition

There are 4 unique types of molecules in this entry. The entry contains 8642 atoms, of which 0 are hydrogens and 0 are deuteriums.

In the tables below, the ZeroOcc column contains the number of atoms modelled with zero occupancy, the AltConf column contains the number of residues with at least one atom in alternate conformation and the Trace column contains the number of residues modelled with at most 2 atoms.

- Molecule 1 is a protein called ADAM 17.

Mol	Chain	Residues	Atoms					ZeroOcc	AltConf	Trace
1	A	254	Total 2016	C 1268	N 341	O 394	S 13	0	0	0
1	B	254	Total 2016	C 1268	N 341	O 394	S 13	0	0	0
1	C	256	Total 2031	C 1277	N 343	O 398	S 13	0	0	0
1	D	254	Total 2017	C 1270	N 341	O 393	S 13	0	0	0

There are 36 discrepancies between the modelled and reference sequences:

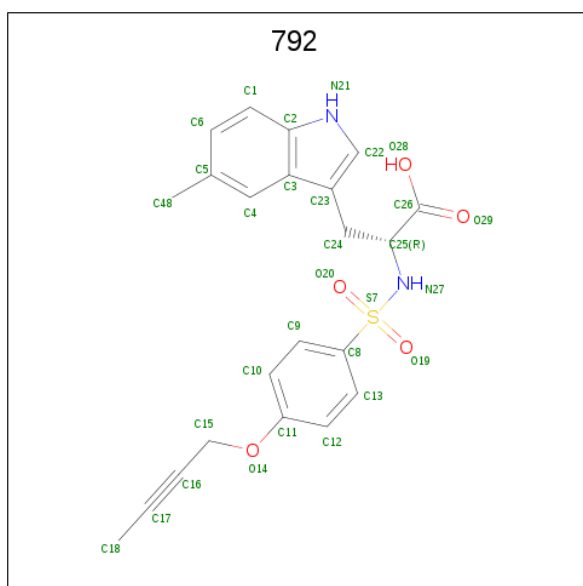
Chain	Residue	Modelled	Actual	Comment	Reference
A	266	ALA	SER	ENGINEERED	UNP P78536
A	452	GLN	ASN	ACETYLTATION	UNP P78536
A	493	SER	-	EXPRESSION TAG	UNP P78536
A	494	HIS	-	EXPRESSION TAG	UNP P78536
A	495	HIS	-	EXPRESSION TAG	UNP P78536
A	496	HIS	-	EXPRESSION TAG	UNP P78536
A	497	HIS	-	EXPRESSION TAG	UNP P78536
A	498	HIS	-	EXPRESSION TAG	UNP P78536
A	499	HIS	-	EXPRESSION TAG	UNP P78536
B	266	ALA	SER	ENGINEERED	UNP P78536
B	452	GLN	ASN	ENGINEERED	UNP P78536
B	493	SER	-	EXPRESSION TAG	UNP P78536
B	494	HIS	-	EXPRESSION TAG	UNP P78536
B	495	HIS	-	EXPRESSION TAG	UNP P78536
B	496	HIS	-	EXPRESSION TAG	UNP P78536
B	497	HIS	-	EXPRESSION TAG	UNP P78536
B	498	HIS	-	EXPRESSION TAG	UNP P78536
B	499	HIS	-	EXPRESSION TAG	UNP P78536
C	266	ALA	SER	ENGINEERED	UNP P78536
C	452	GLN	ASN	ENGINEERED	UNP P78536
C	493	SER	-	EXPRESSION TAG	UNP P78536

*Continued on next page...*

Continued from previous page...

Chain	Residue	Modelled	Actual	Comment	Reference
C	494	HIS	-	EXPRESSION TAG	UNP P78536
C	495	HIS	-	EXPRESSION TAG	UNP P78536
C	496	HIS	-	EXPRESSION TAG	UNP P78536
C	497	HIS	-	EXPRESSION TAG	UNP P78536
C	498	HIS	-	EXPRESSION TAG	UNP P78536
C	499	HIS	-	EXPRESSION TAG	UNP P78536
D	266	ALA	SER	ENGINEERED	UNP P78536
D	452	GLN	ASN	ENGINEERED	UNP P78536
D	493	SER	-	EXPRESSION TAG	UNP P78536
D	494	HIS	-	EXPRESSION TAG	UNP P78536
D	495	HIS	-	EXPRESSION TAG	UNP P78536
D	496	HIS	-	EXPRESSION TAG	UNP P78536
D	497	HIS	-	EXPRESSION TAG	UNP P78536
D	498	HIS	-	EXPRESSION TAG	UNP P78536
D	499	HIS	-	EXPRESSION TAG	UNP P78536

- Molecule 2 is N-{{4-(but-2-yn-1-yloxy)phenyl}sulfonyl}-5-methyl-D-tryptophan (three-letter code: 792) (formula: C<sub>22</sub>H<sub>22</sub>N<sub>2</sub>O<sub>5</sub>S).



Mol	Chain	Residues	Atoms					ZeroOcc	AltConf
2	A	1	Total	C	N	O	S	0	0
			29	21	2	5	1		
2	B	1	Total	C	N	O	S	0	0
			30	22	2	5	1		
2	C	1	Total	C	N	O	S	0	0
			30	22	2	5	1		

Continued on next page...

*Continued from previous page...*

Mol	Chain	Residues	Atoms					ZeroOcc	AltConf
2	D	1	Total	C	N	O	S	0	0
			30	22	2	5	1		

- Molecule 3 is ZINC ION (three-letter code: ZN) (formula: Zn).

Mol	Chain	Residues	Atoms		ZeroOcc	AltConf
3	B	1	Total	Zn	0	0
			1	1		
3	A	1	Total	Zn	0	0
			1	1		
3	D	1	Total	Zn	0	0
			1	1		
3	C	1	Total	Zn	0	0
			1	1		

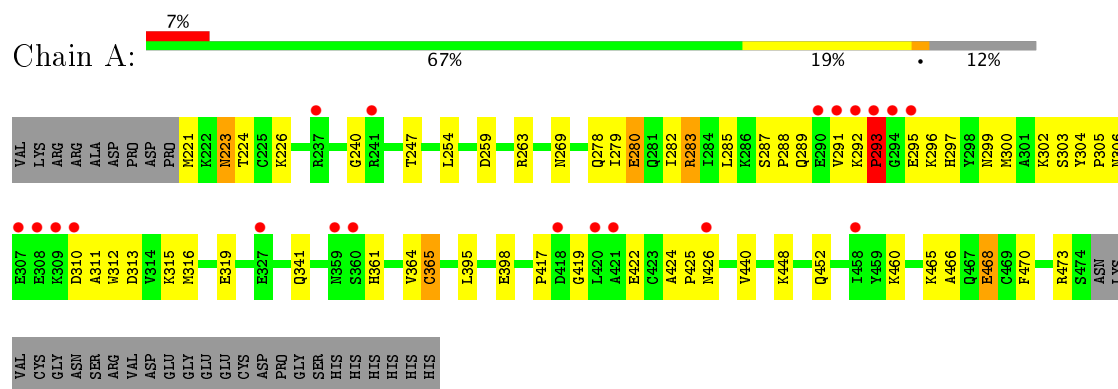
- Molecule 4 is water.

Mol	Chain	Residues	Atoms		ZeroOcc	AltConf
4	A	105	Total	O	0	0
			105	105		
4	B	97	Total	O	0	0
			97	97		
4	C	122	Total	O	0	0
			122	122		
4	D	115	Total	O	0	0
			115	115		

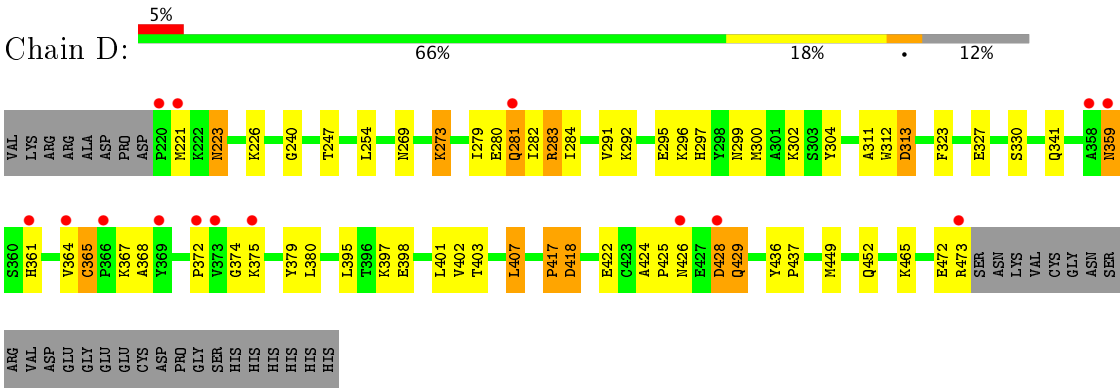
### 3 Residue-property plots [i](#)

These plots are drawn for all protein, RNA and DNA chains in the entry. The first graphic for a chain summarises the proportions of the various outlier classes displayed in the second graphic. The second graphic shows the sequence view annotated by issues in geometry and electron density. Residues are color-coded according to the number of geometric quality criteria for which they contain at least one outlier: green = 0, yellow = 1, orange = 2 and red = 3 or more. A red dot above a residue indicates a poor fit to the electron density ( $RSRZ > 2$ ). Stretches of 2 or more consecutive residues without any outlier are shown as a green connector. Residues present in the sample, but not in the model, are shown in grey.

#### • Molecule 1: ADAM 17



● Molecule 1: ADAM 17



## 4 Data and refinement statistics

Property	Value	Source
Space group	C 1 2 1	Depositor
Cell constants a, b, c, $\alpha$ , $\beta$ , $\gamma$	163.85Å 51.33Å 132.74Å 90.00° 102.64° 90.00°	Depositor
Resolution (Å)	20.00 – 2.10 19.98 – 2.10	Depositor EDS
% Data completeness (in resolution range)	98.5 (20.00-2.10) 98.4 (19.98-2.10)	Depositor EDS
$R_{merge}$	0.05	Depositor
$R_{sym}$	0.05	Depositor
$\langle I/\sigma(I) \rangle$ <sup>1</sup>	6.22 (at 2.09Å)	Xtriage
Refinement program	X-PLOR 3.851	Depositor
R, $R_{free}$	0.218 , 0.257 0.229 , 0.262	Depositor DCC
$R_{free}$ test set	3153 reflections (5.05%)	DCC
Wilson B-factor (Å <sup>2</sup> )	27.1	Xtriage
Anisotropy	0.218	Xtriage
Bulk solvent $k_{sol}$ (e/Å <sup>3</sup> ), $B_{sol}$ (Å <sup>2</sup> )	0.37 , 49.3	EDS
L-test for twinning <sup>2</sup>	$\langle  L  \rangle = 0.49$ , $\langle L^2 \rangle = 0.32$	Xtriage
Estimated twinning fraction	No twinning to report.	Xtriage
$F_o, F_c$ correlation	0.94	EDS
Total number of atoms	8642	wwPDB-VP
Average B, all atoms (Å <sup>2</sup> )	31.0	wwPDB-VP

Xtriage's analysis on translational NCS is as follows: *The analyses of the Patterson function reveals a significant off-origin peak that is 61.98 % of the origin peak, indicating pseudo translational symmetry. The chance of finding a peak of this or larger height randomly in a structure without pseudo translational symmetry is equal to 1.2067e-05. The detected translational NCS is most likely also responsible for the elevated intensity ratio.*

<sup>1</sup> Intensities estimated from amplitudes.

<sup>2</sup> Theoretical values of  $\langle |L| \rangle$ ,  $\langle L^2 \rangle$  for acentric reflections are 0.5, 0.333 respectively for untwinned datasets, and 0.375, 0.2 for perfectly twinned datasets.



## 5 Model quality [i](#)

### 5.1 Standard geometry [i](#)

Bond lengths and bond angles in the following residue types are not validated in this section: ZN, 792

The Z score for a bond length (or angle) is the number of standard deviations the observed value is removed from the expected value. A bond length (or angle) with  $|Z| > 5$  is considered an outlier worth inspection. RMSZ is the root-mean-square of all Z scores of the bond lengths (or angles).

Mol	Chain	Bond lengths		Bond angles	
		RMSZ	$\# Z  > 5$	RMSZ	$\# Z  > 5$
1	A	0.34	0/2061	0.62	1/2780 (0.0%)
1	B	0.32	0/2061	0.58	0/2780
1	C	0.34	0/2077	0.62	1/2803 (0.0%)
1	D	0.34	0/2063	0.61	1/2783 (0.0%)
All	All	0.33	0/8262	0.61	3/11146 (0.0%)

There are no bond length outliers.

All (3) bond angle outliers are listed below:

Mol	Chain	Res	Type	Atoms	Z	Observed(°)	Ideal(°)
1	A	313	ASP	N-CA-C	-5.95	94.94	111.00
1	C	313	ASP	N-CA-C	-5.53	96.07	111.00
1	D	313	ASP	N-CA-C	-5.50	96.14	111.00

There are no chirality outliers.

There are no planarity outliers.

### 5.2 Too-close contacts [i](#)

In the following table, the Non-H and H(model) columns list the number of non-hydrogen atoms and hydrogen atoms in the chain respectively. The H(added) column lists the number of hydrogen atoms added and optimized by MolProbity. The Clashes column lists the number of clashes within the asymmetric unit, whereas Symm-Clashes lists symmetry related clashes.

Mol	Chain	Non-H	H(model)	H(added)	Clashes	Symm-Clashes
1	A	2016	0	1932	54	0
1	B	2016	0	1932	74	0
1	C	2031	0	1943	51	0
1	D	2017	0	1935	63	0

*Continued on next page...*

*Continued from previous page...*

Mol	Chain	Non-H	H(model)	H(added)	Clashes	Symm-Clashes
2	A	29	0	18	0	0
2	B	30	0	21	0	0
2	C	30	0	21	0	0
2	D	30	0	21	0	0
3	A	1	0	0	0	0
3	B	1	0	0	0	0
3	C	1	0	0	0	0
3	D	1	0	0	0	0
4	A	105	0	0	6	0
4	B	97	0	0	5	0
4	C	122	0	0	8	0
4	D	115	0	0	2	0
All	All	8642	0	7823	231	0

The all-atom clashscore is defined as the number of clashes found per 1000 atoms (including hydrogen atoms). The all-atom clashscore for this structure is 14.

The worst 5 of 231 close contacts within the same asymmetric unit are listed below, sorted by their clash magnitude.

Atom-1	Atom-2	Interatomic distance (Å)	Clash overlap (Å)
1:C:291:VAL:HG22	1:C:295:GLU:HG3	1.29	1.11
1:B:311:ALA:HB2	1:B:341:GLN:HB2	1.46	0.98
1:D:291:VAL:HG13	1:D:295:GLU:HG3	1.46	0.98
1:B:263:ARG:HD3	1:B:473:ARG:HH21	1.35	0.89
1:A:263:ARG:HE	1:A:473:ARG:HH21	1.22	0.87

There are no symmetry-related clashes.

## 5.3 Torsion angles [i](#)

### 5.3.1 Protein backbone [i](#)

In the following table, the Percentiles column shows the percent Ramachandran outliers of the chain as a percentile score with respect to all X-ray entries followed by that with respect to entries of similar resolution.

The Analysed column shows the number of residues for which the backbone conformation was analysed, and the total number of residues.

Mol	Chain	Analysed	Favoured	Allowed	Outliers	Percentiles	
1	A	252/288 (88%)	237 (94%)	13 (5%)	2 (1%)	22	17
1	B	252/288 (88%)	240 (95%)	9 (4%)	3 (1%)	15	9
1	C	254/288 (88%)	244 (96%)	8 (3%)	2 (1%)	22	17
1	D	252/288 (88%)	244 (97%)	4 (2%)	4 (2%)	11	5
All	All	1010/1152 (88%)	965 (96%)	34 (3%)	11 (1%)	17	11

5 of 11 Ramachandran outliers are listed below:

Mol	Chain	Res	Type
1	A	293	PRO
1	B	417	PRO
1	D	417	PRO
1	B	418	ASP
1	D	418	ASP

### 5.3.2 Protein sidechains ⓘ

In the following table, the Percentiles column shows the percent sidechain outliers of the chain as a percentile score with respect to all X-ray entries followed by that with respect to entries of similar resolution.

The Analysed column shows the number of residues for which the sidechain conformation was analysed, and the total number of residues.

Mol	Chain	Analysed	Rotameric	Outliers	Percentiles	
1	A	217/247 (88%)	209 (96%)	8 (4%)	39	39
1	B	217/247 (88%)	206 (95%)	11 (5%)	28	25
1	C	219/247 (89%)	212 (97%)	7 (3%)	44	46
1	D	217/247 (88%)	207 (95%)	10 (5%)	31	29
All	All	870/988 (88%)	834 (96%)	36 (4%)	35	35

5 of 36 residues with a non-rotameric sidechain are listed below:

Mol	Chain	Res	Type
1	B	467	GLN
1	C	310	ASP
1	D	407	LEU
1	B	473	ARG
1	C	313	ASP

Some sidechains can be flipped to improve hydrogen bonding and reduce clashes. 5 of 33 such sidechains are listed below:

Mol	Chain	Res	Type
1	B	452	GLN
1	C	297	HIS
1	D	452	GLN
1	B	456	GLN
1	B	471	GLN

### 5.3.3 RNA [i](#)

There are no RNA molecules in this entry.

### 5.4 Non-standard residues in protein, DNA, RNA chains [i](#)

There are no non-standard protein/DNA/RNA residues in this entry.

### 5.5 Carbohydrates [i](#)

There are no carbohydrates in this entry.

### 5.6 Ligand geometry [i](#)

Of 8 ligands modelled in this entry, 4 are monoatomic - leaving 4 for Mogul analysis.

In the following table, the Counts columns list the number of bonds (or angles) for which Mogul statistics could be retrieved, the number of bonds (or angles) that are observed in the model and the number of bonds (or angles) that are defined in the Chemical Component Dictionary. The Link column lists molecule types, if any, to which the group is linked. The Z score for a bond length (or angle) is the number of standard deviations the observed value is removed from the expected value. A bond length (or angle) with  $|Z| > 2$  is considered an outlier worth inspection. RMSZ is the root-mean-square of all Z scores of the bond lengths (or angles).

Mol	Type	Chain	Res	Link	Bond lengths			Bond angles		
					Counts	RMSZ	$\# Z  > 2$	Counts	RMSZ	$\# Z  > 2$
2	792	A	1	3	27,31,32	2.06	10 (37%)	31,44,45	1.13	3 (9%)
2	792	B	2	3	28,32,32	1.96	11 (39%)	32,45,45	1.03	2 (6%)
2	792	C	3	3	28,32,32	1.96	10 (35%)	32,45,45	1.23	3 (9%)
2	792	D	4	3	28,32,32	1.92	9 (32%)	32,45,45	1.02	3 (9%)

In the following table, the Chirals column lists the number of chiral outliers, the number of chiral

centers analysed, the number of these observed in the model and the number defined in the Chemical Component Dictionary. Similar counts are reported in the Torsion and Rings columns. '-' means no outliers of that kind were identified.

Mol	Type	Chain	Res	Link	Chirals	Torsions	Rings
2	792	A	1	3	-	0/17/23/24	0/3/3/3
2	792	B	2	3	-	0/18/24/24	0/3/3/3
2	792	C	3	3	-	0/18/24/24	0/3/3/3
2	792	D	4	3	-	0/18/24/24	0/3/3/3

The worst 5 of 40 bond length outliers are listed below:

Mol	Chain	Res	Type	Atoms	Z	Observed(Å)	Ideal(Å)
2	B	2	792	O14-C11	2.04	1.42	1.37
2	C	3	792	C10-C11	2.13	1.43	1.38
2	B	2	792	S7-N27	2.15	1.65	1.61
2	A	1	792	C10-C11	2.29	1.43	1.38
2	B	2	792	C24-C25	2.29	1.56	1.53

The worst 5 of 11 bond angle outliers are listed below:

Mol	Chain	Res	Type	Atoms	Z	Observed(°)	Ideal(°)
2	A	1	792	O19-S7-O20	-3.36	115.26	119.55
2	C	3	792	O19-S7-O20	-3.29	115.34	119.55
2	D	4	792	O19-S7-O20	-3.16	115.50	119.55
2	B	2	792	O19-S7-O20	-3.06	115.64	119.55
2	A	1	792	C5-C4-C3	-2.11	119.36	121.69

There are no chirality outliers.

There are no torsion outliers.

There are no ring outliers.

No monomer is involved in short contacts.

## 5.7 Other polymers [i](#)

There are no such residues in this entry.

## 5.8 Polymer linkage issues [i](#)

There are no chain breaks in this entry.

## 6 Fit of model and data [i](#)

### 6.1 Protein, DNA and RNA chains [i](#)

In the following table, the column labelled ‘#RSRZ> 2’ contains the number (and percentage) of RSRZ outliers, followed by percent RSRZ outliers for the chain as percentile scores relative to all X-ray entries and entries of similar resolution. The OWAB column contains the minimum, median, 95<sup>th</sup> percentile and maximum values of the occupancy-weighted average B-factor per residue. The column labelled ‘Q< 0.9’ lists the number of (and percentage) of residues with an average occupancy less than 0.9.

Mol	Chain	Analysed	<RSRZ>	#RSRZ>2	OWAB(Å <sup>2</sup> )	Q<0.9
1	A	254/288 (88%)	0.41	20 (7%) 13 17	17, 29, 50, 56	0
1	B	254/288 (88%)	0.59	32 (12%) 4 6	19, 34, 53, 59	0
1	C	256/288 (88%)	0.32	12 (4%) 32 38	17, 27, 47, 61	0
1	D	254/288 (88%)	0.35	15 (5%) 23 29	17, 29, 49, 56	0
All	All	1018/1152 (88%)	0.42	79 (7%) 14 18	17, 29, 50, 61	0

The worst 5 of 79 RSRZ outliers are listed below:

Mol	Chain	Res	Type	RSRZ
1	C	219	ASP	8.4
1	C	221	MET	5.4
1	B	359	ASN	5.0
1	D	221	MET	4.9
1	C	310	ASP	4.7

### 6.2 Non-standard residues in protein, DNA, RNA chains [i](#)

There are no non-standard protein/DNA/RNA residues in this entry.

### 6.3 Carbohydrates [i](#)

There are no carbohydrates in this entry.

### 6.4 Ligands [i](#)

In the following table, the Atoms column lists the number of modelled atoms in the group and the number defined in the chemical component dictionary. LLDF column lists the quality of electron density of the group with respect to its neighbouring residues in protein, DNA or RNA chains. The B-factors column lists the minimum, median, 95<sup>th</sup> percentile and maximum values of B factors

of atoms in the group. The column labelled 'Q< 0.9' lists the number of atoms with occupancy less than 0.9.

Mol	Type	Chain	Res	Atoms	RSCC	RSR	LLDF	B-factors( $\text{\AA}^2$ )	Q<0.9
2	792	A	1	29/30	0.94	0.13	0.78	20,28,33,36	0
2	792	D	4	30/30	0.95	0.12	0.24	22,30,35,39	0
2	792	C	3	30/30	0.94	0.13	0.02	26,29,33,35	0
2	792	B	2	30/30	0.94	0.11	-0.68	26,32,37,38	0
3	ZN	A	500	1/1	1.00	0.04	-	23,23,23,23	0
3	ZN	C	500	1/1	0.99	0.06	-	24,24,24,24	0
3	ZN	B	500	1/1	0.99	0.04	-	31,31,31,31	0
3	ZN	D	500	1/1	1.00	0.06	-	25,25,25,25	0

## 6.5 Other polymers [i](#)

There are no such residues in this entry.