



wwPDB X-ray Structure Validation Summary Report ⓘ

Feb 12, 2017 – 10:59 pm GMT

PDB ID : 5G44
Title : Ligand complex of ROR γ LBD
Authors : Xue, Y.; Guo, H.; Hillertz, P.
Deposited on : 2016-05-04
Resolution : 1.84 Å(reported)

This is a wwPDB X-ray Structure Validation Summary Report for a publicly released PDB entry.

We welcome your comments at validation@mail.wwpdb.org

A user guide is available at

<http://wwpdb.org/validation/2016/XrayValidationReportHelp>

with specific help available everywhere you see the ⓘ symbol.

The following versions of software and data (see [references ⓘ](#)) were used in the production of this report:

MolProbity	:	4.02b-467
Mogul	:	1.7.2 (RC1), CSD as538be (2017)
Xtriage (Phenix)	:	1.9-1692
EDS	:	trunk28620
Percentile statistics	:	20161228.v01 (using entries in the PDB archive December 28th 2016)
Refmac	:	5.8.0135
CCP4	:	6.5.0
Ideal geometry (proteins)	:	Engh & Huber (2001)
Ideal geometry (DNA, RNA)	:	Parkinson et al. (1996)
Validation Pipeline (wwPDB-VP)	:	recalc28949

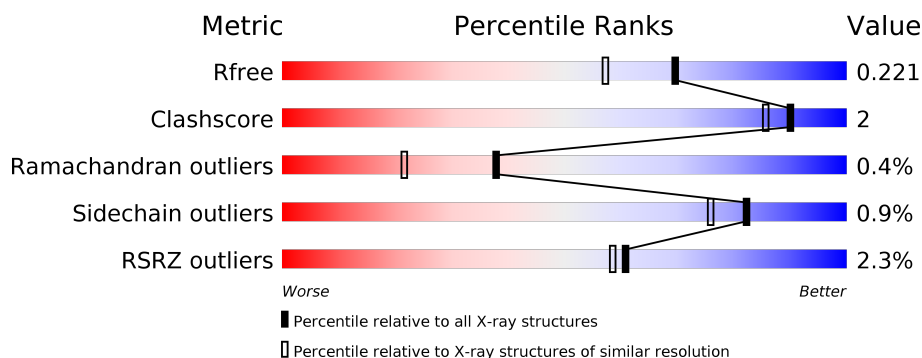
1 Overall quality at a glance

The following experimental techniques were used to determine the structure:

X-RAY DIFFRACTION

The reported resolution of this entry is 1.84 Å.

Percentile scores (ranging between 0-100) for global validation metrics of the entry are shown in the following graphic. The table shows the number of entries on which the scores are based.



Metric	Whole archive (#Entries)	Similar resolution (#Entries, resolution range(Å))
R_{free}	100719	2964 (1.86-1.82)
Clashscore	112137	3197 (1.86-1.82)
Ramachandran outliers	110173	3164 (1.86-1.82)
Sidechain outliers	110143	3165 (1.86-1.82)
RSRZ outliers	101464	2973 (1.86-1.82)

The table below summarises the geometric issues observed across the polymeric chains and their fit to the electron density. The red, orange, yellow and green segments on the lower bar indicate the fraction of residues that contain outliers for ≥ 3 , 2, 1 and 0 types of geometric quality criteria. A grey segment represents the fraction of residues that are not modelled. The numeric value for each fraction is indicated below the corresponding segment, with a dot representing fractions $\leq 5\%$. The upper red bar (where present) indicates the fraction of residues that have poor fit to the electron density. The numeric value is given above the bar.

Mol	Chain	Length	Quality of chain
1	A	266	<div> <div></div> <div>88%</div> <div>8%</div> </div>
2	C	12	<div> <div>25%</div> <div>50%</div> <div>50%</div> </div>

The following table lists non-polymeric compounds, carbohydrate monomers and non-standard residues in protein, DNA, RNA chains that are outliers for geometric or electron-density-fit criteria:

Mol	Type	Chain	Res	Chirality	Geometry	Clashes	Electron density
4	SWX	A	1511	-	-	-	X

2 Entry composition

There are 8 unique types of molecules in this entry. The entry contains 2293 atoms, of which 0 are hydrogens and 0 are deuteriums.

In the tables below, the ZeroOcc column contains the number of atoms modelled with zero occupancy, the AltConf column contains the number of residues with at least one atom in alternate conformation and the Trace column contains the number of residues modelled with at most 2 atoms.

- Molecule 1 is a protein called NUCLEAR RECEPTOR ROR-GAMMA.

Mol	Chain	Residues	Atoms					ZeroOcc	AltConf	Trace
1	A	245	Total	C	N	O	S	0	0	0
			1994	1270	357	353	14			

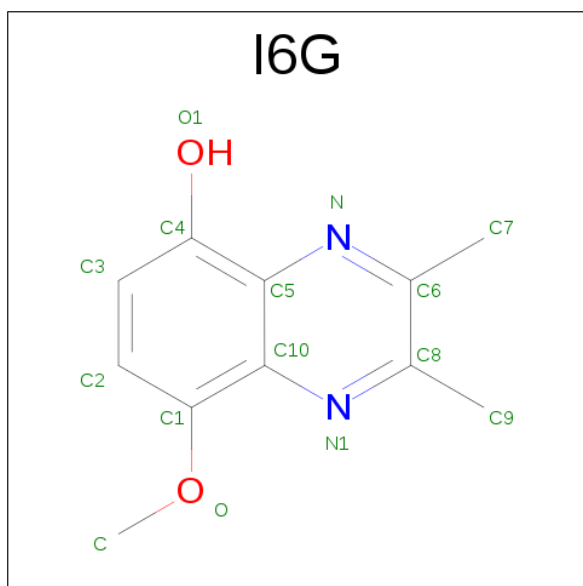
There are 23 discrepancies between the modelled and reference sequences:

Chain	Residue	Modelled	Actual	Comment	Reference
A	244	HIS	-	EXPRESSION TAG	UNP P51449
A	245	ASN	-	EXPRESSION TAG	UNP P51449
A	246	HIS	-	EXPRESSION TAG	UNP P51449
A	247	ASN	-	EXPRESSION TAG	UNP P51449
A	248	HIS	-	EXPRESSION TAG	UNP P51449
A	249	ASN	-	EXPRESSION TAG	UNP P51449
A	250	HIS	-	EXPRESSION TAG	UNP P51449
A	251	ASN	-	EXPRESSION TAG	UNP P51449
A	252	HIS	-	EXPRESSION TAG	UNP P51449
A	253	ASN	-	EXPRESSION TAG	UNP P51449
A	254	HIS	-	EXPRESSION TAG	UNP P51449
A	255	ASN	-	EXPRESSION TAG	UNP P51449
A	256	GLY	-	EXPRESSION TAG	UNP P51449
A	257	GLY	-	EXPRESSION TAG	UNP P51449
A	258	GLU	-	EXPRESSION TAG	UNP P51449
A	259	ASN	-	EXPRESSION TAG	UNP P51449
A	260	LEU	-	EXPRESSION TAG	UNP P51449
A	261	TYR	-	EXPRESSION TAG	UNP P51449
A	262	PHE	-	EXPRESSION TAG	UNP P51449
A	263	GLN	-	EXPRESSION TAG	UNP P51449
A	264	GLY	-	EXPRESSION TAG	UNP P51449
A	508	GLY	-	EXPRESSION TAG	UNP P51449
A	509	GLY	-	EXPRESSION TAG	UNP P51449

- Molecule 2 is a protein called RORG.

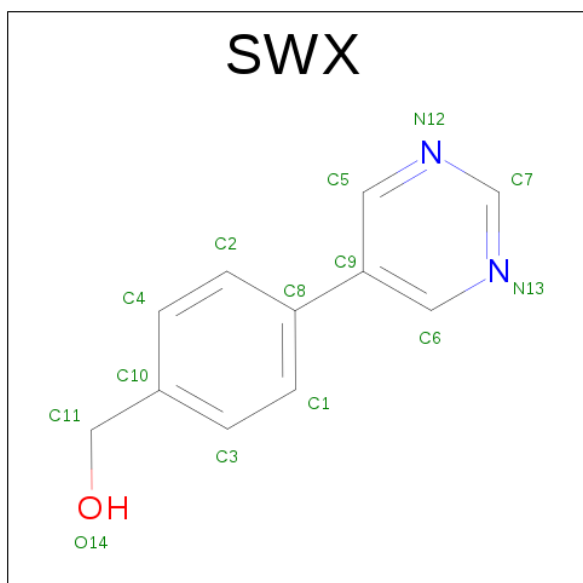
Mol	Chain	Residues	Atoms				ZeroOcc	AltConf	Trace
2	C	12	Total	C	N	O	0	0	0
			104	66	22	16			

- Molecule 3 is 8-METHOXY-2,3-DIMETHYLQUINOXALIN-5-OL (three-letter code: I6G) (formula: $C_{11}H_{12}N_2O_2$).



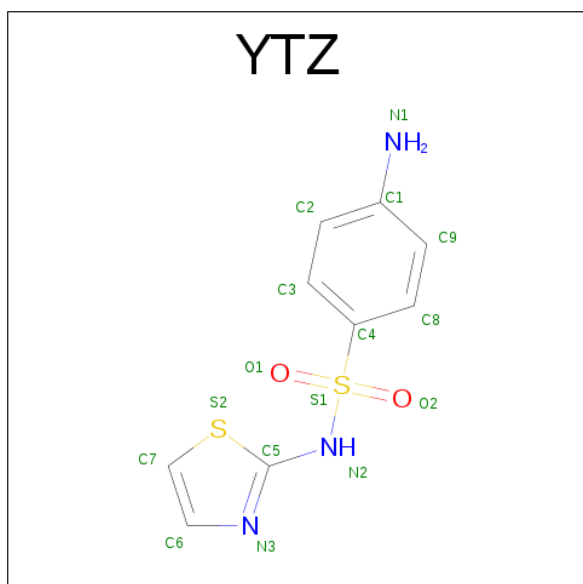
Mol	Chain	Residues	Atoms				ZeroOcc	AltConf
3	A	1	Total	C	N	O	0	0
			15	11	2	2		

- Molecule 4 is (4-PYRIMIDIN-5-YLPHENYL)METHANOL (three-letter code: SWX) (formula: $C_{11}H_{10}N_2O$).



Mol	Chain	Residues	Atoms				ZeroOcc	AltConf
4	A	1	Total	C	N	O	0	0
			14	11	2	1		

- Molecule 5 is 4-AMINO-N-(1,3-THIAZOL-2-YL)BENZENESULFONAMIDE (three-letter code: YTZ) (formula: C₉H₉N₃O₂S₂).

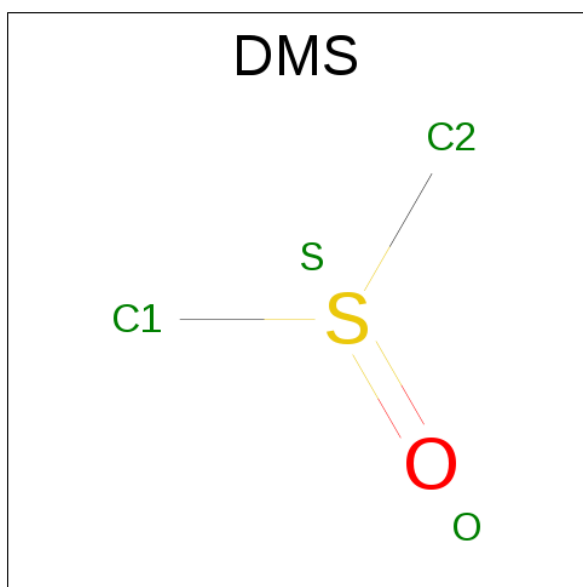


Mol	Chain	Residues	Atoms					ZeroOcc	AltConf
5	A	1	Total	C	N	O	S	0	0
			16	9	3	2	2		

- Molecule 6 is SODIUM ION (three-letter code: NA) (formula: Na).

Mol	Chain	Residues	Atoms		ZeroOcc	AltConf
6	A	1	Total	Na	0	0
			1	1		

- Molecule 7 is DIMETHYL SULFOXIDE (three-letter code: DMS) (formula: C₂H₆OS).

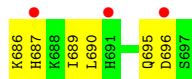


Mol	Chain	Residues	Atoms				ZeroOcc	AltConf
7	A	1	Total	C	O	S	0	0
			4	2	1	1		

- Molecule 8 is water.

Mol	Chain	Residues	Atoms		ZeroOcc	AltConf
8	A	141	Total	O	0	0
			141	141		
8	C	4	Total	O	0	0
			4	4		

- Molecule 1: NUCLEAR RECEPTOR ROR-GAMMA



4 Data and refinement statistics

Property	Value	Source
Space group	P 41 21 2	Depositor
Cell constants a, b, c, α , β , γ	61.84Å 61.84Å 156.43Å 90.00° 90.00° 90.00°	Depositor
Resolution (Å)	48.51 – 1.84 48.51 – 1.84	Depositor EDS
% Data completeness (in resolution range)	99.9 (48.51-1.84) 99.9 (48.51-1.84)	Depositor EDS
R_{merge}	0.12	Depositor
R_{sym}	(Not available)	Depositor
$\langle I/\sigma(I) \rangle$ ¹	1.81 (at 1.84Å)	Xtriage
Refinement program	BUSTER 2.11.1	Depositor
R, R_{free}	0.188 , 0.229 0.188 , 0.221	Depositor DCC
R_{free} test set	1366 reflections (5.28%)	DCC
Wilson B-factor (Å ²)	32.6	Xtriage
Anisotropy	0.158	Xtriage
Bulk solvent k_{sol} (e/Å ³), B_{sol} (Å ²)	0.36 , 46.7	EDS
L-test for twinning ²	$\langle L \rangle = 0.48$, $\langle L^2 \rangle = 0.31$	Xtriage
Estimated twinning fraction	No twinning to report.	Xtriage
F_o, F_c correlation	0.96	EDS
Total number of atoms	2293	wwPDB-VP
Average B, all atoms (Å ²)	37.0	wwPDB-VP

Xtriage's analysis on translational NCS is as follows: *The largest off-origin peak in the Patterson function is 4.67% of the height of the origin peak. No significant pseudotranslation is detected.*

¹Intensities estimated from amplitudes.

²Theoretical values of $\langle |L| \rangle$, $\langle L^2 \rangle$ for acentric reflections are 0.5, 0.333 respectively for untwinned datasets, and 0.375, 0.2 for perfectly twinned datasets.

5 Model quality [i](#)

5.1 Standard geometry [i](#)

Bond lengths and bond angles in the following residue types are not validated in this section: NA, I6G, YTZ, DMS, SWX

The Z score for a bond length (or angle) is the number of standard deviations the observed value is removed from the expected value. A bond length (or angle) with $|Z| > 5$ is considered an outlier worth inspection. RMSZ is the root-mean-square of all Z scores of the bond lengths (or angles).

Mol	Chain	Bond lengths		Bond angles	
		RMSZ	$\# Z > 5$	RMSZ	$\# Z > 5$
1	A	0.52	0/2037	0.56	0/2743
2	C	0.38	0/105	0.56	0/138
All	All	0.51	0/2142	0.56	0/2881

There are no bond length outliers.

There are no bond angle outliers.

There are no chirality outliers.

There are no planarity outliers.

5.2 Too-close contacts [i](#)

In the following table, the Non-H and H(model) columns list the number of non-hydrogen atoms and hydrogen atoms in the chain respectively. The H(added) column lists the number of hydrogen atoms added and optimized by MolProbity. The Clashes column lists the number of clashes within the asymmetric unit, whereas Symm-Clashes lists symmetry related clashes.

Mol	Chain	Non-H	H(model)	H(added)	Clashes	Symm-Clashes
1	A	1994	0	1995	7	0
2	C	104	0	113	5	0
3	A	15	0	12	0	0
4	A	14	0	0	0	0
5	A	16	0	9	0	0
6	A	1	0	0	0	0
7	A	4	0	6	1	0
8	A	141	0	0	0	0
8	C	4	0	0	0	0
All	All	2293	0	2135	9	0

The all-atom clashscore is defined as the number of clashes found per 1000 atoms (including

hydrogen atoms). The all-atom clashscore for this structure is 2.

The worst 5 of 9 close contacts within the same asymmetric unit are listed below, sorted by their clash magnitude.

Atom-1	Atom-2	Interatomic distance (Å)	Clash overlap (Å)
2:C:689:ILE:HD12	2:C:689:ILE:H	1.67	0.59
1:A:504:GLU:OE2	2:C:690:LEU:HB2	2.03	0.58
1:A:354:LYS:HD2	2:C:687:HIS:CE1	2.46	0.51
1:A:383:GLY:HA3	1:A:387:LEU:HD22	1.96	0.48
1:A:369:TYR:OH	1:A:405:HIS:HD2	1.97	0.47

There are no symmetry-related clashes.

5.3 Torsion angles [i](#)

5.3.1 Protein backbone [i](#)

In the following table, the Percentiles column shows the percent Ramachandran outliers of the chain as a percentile score with respect to all X-ray entries followed by that with respect to entries of similar resolution.

The Analysed column shows the number of residues for which the backbone conformation was analysed, and the total number of residues.

Mol	Chain	Analysed	Favoured	Allowed	Outliers	Percentiles	
1	A	243/266 (91%)	240 (99%)	3 (1%)	0	100	100
2	C	10/12 (83%)	9 (90%)	0	1 (10%)	1	0
All	All	253/278 (91%)	249 (98%)	3 (1%)	1 (0%)	38	21

All (1) Ramachandran outliers are listed below:

Mol	Chain	Res	Type
2	C	696	ASP

5.3.2 Protein sidechains [i](#)

In the following table, the Percentiles column shows the percent sidechain outliers of the chain as a percentile score with respect to all X-ray entries followed by that with respect to entries of similar resolution.

The Analysed column shows the number of residues for which the sidechain conformation was analysed, and the total number of residues.

Mol	Chain	Analysed	Rotameric	Outliers	Percentiles	
1	A	217/235 (92%)	217 (100%)	0	100	100
2	C	12/12 (100%)	10 (83%)	2 (17%)	2	0
All	All	229/247 (93%)	227 (99%)	2 (1%)	82	76

All (2) residues with a non-rotameric sidechain are listed below:

Mol	Chain	Res	Type
2	C	686	LYS
2	C	695	GLN

Some sidechains can be flipped to improve hydrogen bonding and reduce clashes. All (5) such sidechains are listed below:

Mol	Chain	Res	Type
1	A	405	HIS
1	A	451	HIS
1	A	487	GLN
1	A	495	GLN
2	C	687	HIS

5.3.3 RNA ⓘ

There are no RNA molecules in this entry.

5.4 Non-standard residues in protein, DNA, RNA chains ⓘ

There are no non-standard protein/DNA/RNA residues in this entry.

5.5 Carbohydrates ⓘ

There are no carbohydrates in this entry.

5.6 Ligand geometry ⓘ

Of 5 ligands modelled in this entry, 1 is monoatomic - leaving 4 for Mogul analysis.

In the following table, the Counts columns list the number of bonds (or angles) for which Mogul statistics could be retrieved, the number of bonds (or angles) that are observed in the model and the number of bonds (or angles) that are defined in the chemical component dictionary. The Link column lists molecule types, if any, to which the group is linked. The Z score for a bond length

(or angle) is the number of standard deviations the observed value is removed from the expected value. A bond length (or angle) with $|Z| > 2$ is considered an outlier worth inspection. RMSZ is the root-mean-square of all Z scores of the bond lengths (or angles).

Mol	Type	Chain	Res	Link	Bond lengths			Bond angles		
					Counts	RMSZ	$\# Z > 2$	Counts	RMSZ	$\# Z > 2$
3	I6G	A	1510	-	16,16,16	1.60	4 (25%)	21,23,23	1.59	5 (23%)
4	SWX	A	1511	-	15,15,15	0.48	0	19,19,19	0.50	0
5	YTZ	A	1512	-	15,17,17	1.50	2 (13%)	17,24,24	1.13	1 (5%)
7	DMS	A	1514	-	3,3,3	1.24	0	3,3,3	1.29	0

In the following table, the Chirals column lists the number of chiral outliers, the number of chiral centers analysed, the number of these observed in the model and the number defined in the chemical component dictionary. Similar counts are reported in the Torsion and Rings columns. '-' means no outliers of that kind were identified.

Mol	Type	Chain	Res	Link	Chirals	Torsions	Rings
3	I6G	A	1510	-	-	0/2/2/2	0/2/2/2
4	SWX	A	1511	-	-	0/6/6/6	0/2/2/2
5	YTZ	A	1512	-	-	0/9/11/11	0/2/2/2
7	DMS	A	1514	-	-	0/0/0/0	0/0/0/0

The worst 5 of 6 bond length outliers are listed below:

Mol	Chain	Res	Type	Atoms	Z	Observed(Å)	Ideal(Å)
3	A	1510	I6G	C4-C5	-3.16	1.38	1.42
3	A	1510	I6G	C1-C10	-2.90	1.38	1.42
3	A	1510	I6G	C10-C5	-2.08	1.39	1.43
3	A	1510	I6G	C8-N1	2.44	1.34	1.32
5	A	1512	YTZ	C5-N2	2.70	1.45	1.40

The worst 5 of 6 bond angle outliers are listed below:

Mol	Chain	Res	Type	Atoms	Z	Observed(°)	Ideal(°)
3	A	1510	I6G	C-O-C1	-3.90	112.23	117.77
3	A	1510	I6G	C2-C3-C4	-3.03	117.77	120.54
5	A	1512	YTZ	C5-N2-S1	-2.74	119.80	124.33
3	A	1510	I6G	C7-C6-C8	2.01	123.99	121.99
3	A	1510	I6G	C3-C4-C5	2.20	122.75	120.11

There are no chirality outliers.

There are no torsion outliers.

There are no ring outliers.

1 monomer is involved in 1 short contact:

Mol	Chain	Res	Type	Clashes	Symm-Clashes
7	A	1514	DMS	1	0

5.7 Other polymers [i](#)

There are no such residues in this entry.

5.8 Polymer linkage issues [i](#)

There are no chain breaks in this entry.

6 Fit of model and data [i](#)

6.1 Protein, DNA and RNA chains [i](#)

In the following table, the column labelled ‘#RSRZ> 2’ contains the number (and percentage) of RSRZ outliers, followed by percent RSRZ outliers for the chain as percentile scores relative to all X-ray entries and entries of similar resolution. The OWAB column contains the minimum, median, 95th percentile and maximum values of the occupancy-weighted average B-factor per residue. The column labelled ‘Q< 0.9’ lists the number of (and percentage) of residues with an average occupancy less than 0.9.

Mol	Chain	Analysed	<RSRZ>	#RSRZ>2	OWAB(Å ²)	Q<0.9
1	A	245/266 (92%)	-0.03	3 (1%) 79 79	21, 32, 53, 84	0
2	C	12/12 (100%)	1.24	3 (25%) 1 0	37, 63, 73, 101	0
All	All	257/278 (92%)	0.03	6 (2%) 61 58	21, 33, 59, 101	0

The worst 5 of 6 RSRZ outliers are listed below:

Mol	Chain	Res	Type	RSRZ
1	A	509	GLY	5.8
2	C	687	HIS	4.3
1	A	265	ALA	3.9
1	A	469	LYS	3.1
2	C	696	ASP	3.0

6.2 Non-standard residues in protein, DNA, RNA chains [i](#)

There are no non-standard protein/DNA/RNA residues in this entry.

6.3 Carbohydrates [i](#)

There are no carbohydrates in this entry.

6.4 Ligands [i](#)

In the following table, the Atoms column lists the number of modelled atoms in the group and the number defined in the chemical component dictionary. LLDF column lists the quality of electron density of the group with respect to its neighbouring residues in protein, DNA or RNA chains. The B-factors column lists the minimum, median, 95th percentile and maximum values of B factors of atoms in the group. The column labelled ‘Q< 0.9’ lists the number of atoms with occupancy less than 0.9.

Mol	Type	Chain	Res	Atoms	RSCC	RSR	LLDF	B-factors(\AA^2)	Q<0.9
4	SWX	A	1511	14/14	0.91	0.21	6.82	36,42,51,56	0
7	DMS	A	1514	4/4	0.94	0.12	0.95	44,55,65,71	0
3	I6G	A	1510	15/15	0.96	0.12	0.91	32,35,39,40	0
6	NA	A	1513	1/1	0.74	0.11	0.86	49,49,49,49	0
5	YTZ	A	1512	16/16	0.99	0.07	-1.33	26,28,32,32	0

6.5 Other polymers [i](#)

There are no such residues in this entry.