



# wwPDB X-ray Structure Validation Summary Report ⓘ

Feb 12, 2017 – 08:20 pm GMT

PDB ID : 2GDI  
Title : Crystal structure of thiamine pyrophosphate-specific riboswitch in complex with thiamine pyrophosphate  
Authors : Serganov, A.  
Deposited on : 2006-03-16  
Resolution : 2.05 Å(reported)

This is a wwPDB X-ray Structure Validation Summary Report for a publicly released PDB entry.

We welcome your comments at [validation@mail.wwpdb.org](mailto:validation@mail.wwpdb.org)

A user guide is available at

<http://wwpdb.org/validation/2016/XrayValidationReportHelp>

with specific help available everywhere you see the ⓘ symbol.

---

The following versions of software and data (see [references ⓘ](#)) were used in the production of this report:

MolProbity	:	4.02b-467
Mogul	:	1.7.2 (RC1), CSD as538be (2017)
Xtriage (Phenix)	:	1.9-1692
EDS	:	trunk28620
Percentile statistics	:	20161228.v01 (using entries in the PDB archive December 28th 2016)
Refmac	:	5.8.0135
CCP4	:	6.5.0
Ideal geometry (proteins)	:	Engh & Huber (2001)
Ideal geometry (DNA, RNA)	:	Parkinson et al. (1996)
Validation Pipeline (wwPDB-VP)	:	recalc28949

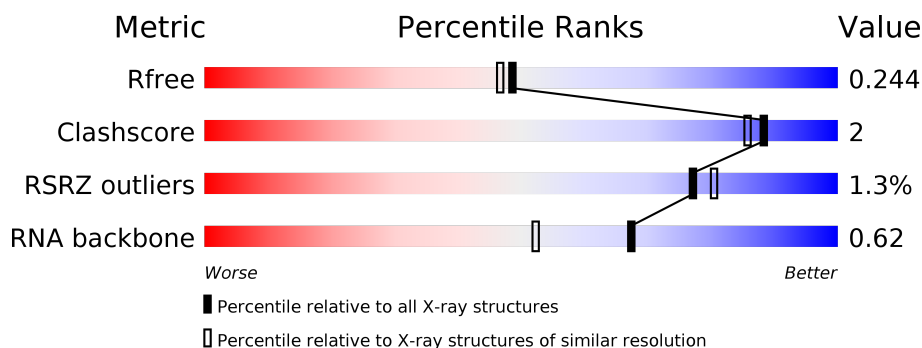
# 1 Overall quality at a glance

The following experimental techniques were used to determine the structure:

*X-RAY DIFFRACTION*

The reported resolution of this entry is 2.05 Å.

Percentile scores (ranging between 0-100) for global validation metrics of the entry are shown in the following graphic. The table shows the number of entries on which the scores are based.



Metric	Whole archive (#Entries)	Similar resolution (#Entries, resolution range(Å))
$R_{free}$	100719	1316 (2.04-2.04)
Clashscore	112137	1394 (2.04-2.04)
RSRZ outliers	101464	1319 (2.04-2.04)
RNA backbone	2435	1009 (2.68-1.40)

The table below summarises the geometric issues observed across the polymeric chains and their fit to the electron density. The red, orange, yellow and green segments on the lower bar indicate the fraction of residues that contain outliers for  $\geq 3$ , 2, 1 and 0 types of geometric quality criteria. A grey segment represents the fraction of residues that are not modelled. The numeric value for each fraction is indicated below the corresponding segment, with a dot representing fractions  $\leq 5\%$ . The upper red bar (where present) indicates the fraction of residues that have poor fit to the electron density. The numeric value is given above the bar.

Mol	Chain	Length	Quality of chain
1	X	80	 84% 6% 10%
1	Y	80	 79% 18% •

## 2 Entry composition [i](#)

There are 6 unique types of molecules in this entry. The entry contains 3817 atoms, of which 0 are hydrogens and 0 are deuteriums.

In the tables below, the ZeroOcc column contains the number of atoms modelled with zero occupancy, the AltConf column contains the number of residues with at least one atom in alternate conformation and the Trace column contains the number of residues modelled with at most 2 atoms.

- Molecule 1 is a RNA chain called TPP riboswitch.

Mol	Chain	Residues	Atoms					ZeroOcc	AltConf	Trace
1	X	80	Total	C	N	O	P	0	0	0
			1719	763	308	566	82			
1	Y	80	Total	C	N	O	P	0	0	0
			1723	763	308	569	83			

- Molecule 2 is SODIUM ION (three-letter code: NA) (formula: Na).

Mol	Chain	Residues	Atoms		ZeroOcc	AltConf
2	X	2	Total	Na	0	0
			2	2		

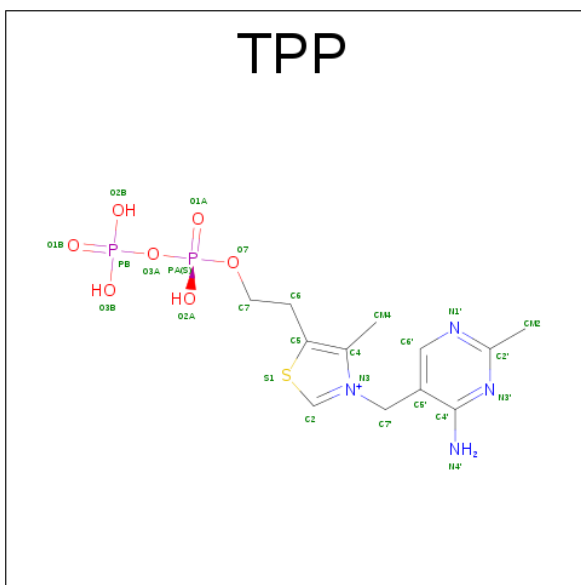
- Molecule 3 is POTASSIUM ION (three-letter code: K) (formula: K).

Mol	Chain	Residues	Atoms		ZeroOcc	AltConf
3	X	3	Total	K	0	0
			3	3		

- Molecule 4 is MAGNESIUM ION (three-letter code: MG) (formula: Mg).

Mol	Chain	Residues	Atoms		ZeroOcc	AltConf
4	X	3	Total	Mg	0	0
			3	3		
4	Y	3	Total	Mg	0	0
			3	3		

- Molecule 5 is THIAMINE DIPHOSPHATE (three-letter code: TPP) (formula: C<sub>12</sub>H<sub>19</sub>N<sub>4</sub>O<sub>7</sub>P<sub>2</sub>S).



Mol	Chain	Residues	Atoms						ZeroOcc	AltConf
5	X	1	Total 26	C 12	N 4	O 7	P 2	S 1	0	0
5	Y	1	Total 26	C 12	N 4	O 7	P 2	S 1	0	0

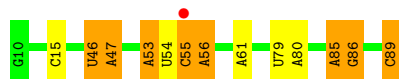
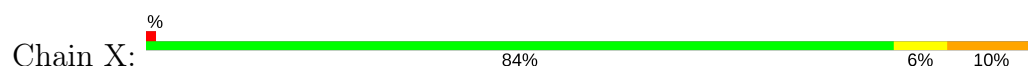
- Molecule 6 is water.

Mol	Chain	Residues	Atoms	ZeroOcc	AltConf
6	X	191	Total O 191 191	0	0
6	Y	121	Total O 121 121	0	0

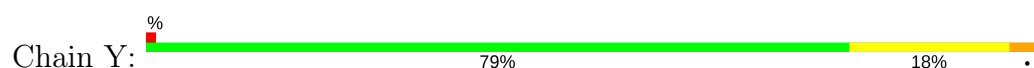
### 3 Residue-property plots [i](#)

These plots are drawn for all protein, RNA and DNA chains in the entry. The first graphic for a chain summarises the proportions of the various outlier classes displayed in the second graphic. The second graphic shows the sequence view annotated by issues in geometry and electron density. Residues are color-coded according to the number of geometric quality criteria for which they contain at least one outlier: green = 0, yellow = 1, orange = 2 and red = 3 or more. A red dot above a residue indicates a poor fit to the electron density ( $\text{RSRZ} > 2$ ). Stretches of 2 or more consecutive residues without any outlier are shown as a green connector. Residues present in the sample, but not in the model, are shown in grey.

- Molecule 1: TPP riboswitch



- Molecule 1: TPP riboswitch



## 4 Data and refinement statistics

Property	Value	Source
Space group	C 1 2 1	Depositor
Cell constants a, b, c, $\alpha$ , $\beta$ , $\gamma$	148.82Å 29.56Å 95.17Å 90.00° 94.55° 90.00°	Depositor
Resolution (Å)	20.00 – 2.05 19.57 – 2.04	Depositor EDS
% Data completeness (in resolution range)	99.8 (20.00-2.05) 99.2 (19.57-2.04)	Depositor EDS
$R_{merge}$	0.06	Depositor
$R_{sym}$	(Not available)	Depositor
$\langle I/\sigma(I) \rangle$ <sup>1</sup>	2.80 (at 2.04Å)	Xtriage
Refinement program	REFMAC 5.2.0005	Depositor
R, $R_{free}$	0.208 , 0.241 0.209 , 0.244	Depositor DCC
$R_{free}$ test set	1337 reflections (5.29%)	DCC
Wilson B-factor (Å <sup>2</sup> )	36.9	Xtriage
Anisotropy	0.309	Xtriage
Bulk solvent $k_{sol}$ (e/Å <sup>3</sup> ), $B_{sol}$ (Å <sup>2</sup> )	0.31 , 39.4	EDS
L-test for twinning <sup>2</sup>	$\langle  L  \rangle = 0.50$ , $\langle L^2 \rangle = 0.33$	Xtriage
Estimated twinning fraction	No twinning to report.	Xtriage
$F_o, F_c$ correlation	0.95	EDS
Total number of atoms	3817	wwPDB-VP
Average B, all atoms (Å <sup>2</sup> )	35.0	wwPDB-VP

Xtriage's analysis on translational NCS is as follows: *The largest off-origin peak in the Patterson function is 6.59% of the height of the origin peak. No significant pseudotranslation is detected.*

<sup>1</sup>Intensities estimated from amplitudes.

<sup>2</sup>Theoretical values of  $\langle |L| \rangle$ ,  $\langle L^2 \rangle$  for acentric reflections are 0.5, 0.333 respectively for untwinned datasets, and 0.375, 0.2 for perfectly twinned datasets.

## 5 Model quality [i](#)

### 5.1 Standard geometry [i](#)

Bond lengths and bond angles in the following residue types are not validated in this section: MG, NA, K, GTP, TPP, CCC

The Z score for a bond length (or angle) is the number of standard deviations the observed value is removed from the expected value. A bond length (or angle) with  $|Z| > 5$  is considered an outlier worth inspection. RMSZ is the root-mean-square of all Z scores of the bond lengths (or angles).

Mol	Chain	Bond lengths		Bond angles	
		RMSZ	$\# Z  > 5$	RMSZ	$\# Z  > 5$
1	X	0.42	0/1865	0.93	2/2906 (0.1%)
1	Y	0.40	0/1865	0.89	1/2906 (0.0%)
All	All	0.41	0/3730	0.91	3/5812 (0.1%)

There are no bond length outliers.

All (3) bond angle outliers are listed below:

Mol	Chain	Res	Type	Atoms	Z	Observed(°)	Ideal(°)
1	X	86	G	C4'-C3'-C2'	-5.88	96.72	102.60
1	Y	86	G	C4'-C3'-C2'	-5.33	97.27	102.60
1	X	53	A	C1'-O4'-C4'	-5.33	105.64	109.90

There are no chirality outliers.

There are no planarity outliers.

### 5.2 Too-close contacts [i](#)

In the following table, the Non-H and H(model) columns list the number of non-hydrogen atoms and hydrogen atoms in the chain respectively. The H(added) column lists the number of hydrogen atoms added and optimized by MolProbity. The Clashes column lists the number of clashes within the asymmetric unit, whereas Symm-Clashes lists symmetry related clashes.

Mol	Chain	Non-H	H(model)	H(added)	Clashes	Symm-Clashes
1	X	1719	0	858	5	0
1	Y	1723	0	861	5	0
2	X	2	0	0	0	0
3	X	3	0	0	0	0
4	X	3	0	0	0	0
4	Y	3	0	0	0	0

*Continued on next page...*

*Continued from previous page...*

Mol	Chain	Non-H	H(model)	H(added)	Clashes	Symm-Clashes
5	X	26	0	16	1	0
5	Y	26	0	16	1	0
6	X	191	0	0	0	0
6	Y	121	0	0	0	0
All	All	3817	0	1751	12	0

The all-atom clashscore is defined as the number of clashes found per 1000 atoms (including hydrogen atoms). The all-atom clashscore for this structure is 2.

The worst 5 of 12 close contacts within the same asymmetric unit are listed below, sorted by their clash magnitude.

Atom-1	Atom-2	Interatomic distance (Å)	Clash overlap (Å)
1:Y:46:U:H4'	1:Y:47:A:O5'	1.73	0.88
1:X:46:U:H4'	1:X:47:A:O5'	1.92	0.70
1:X:55:C:O2'	1:X:56:A:H5'	1.97	0.64
1:X:85:A:H1'	1:X:86:G:C8	2.44	0.53
1:Y:58:C:H2'	1:Y:59:U:H6	1.76	0.51

There are no symmetry-related clashes.

## 5.3 Torsion angles [i](#)

### 5.3.1 Protein backbone [i](#)

There are no protein molecules in this entry.

### 5.3.2 Protein sidechains [i](#)

There are no protein molecules in this entry.

### 5.3.3 RNA [i](#)

Mol	Chain	Analysed	Backbone Outliers	Pucker Outliers
1	X	78/80 (97%)	11 (14%)	0
1	Y	78/80 (97%)	12 (15%)	0
All	All	156/160 (97%)	23 (14%)	0

5 of 23 RNA backbone outliers are listed below:



Mol	Chain	Res	Type
1	X	15	C
1	X	46	U
1	X	47	A
1	X	54	U
1	X	55	C

There are no RNA pucker outliers to report.

## 5.4 Non-standard residues in protein, DNA, RNA chains

4 non-standard protein/DNA/RNA residues are modelled in this entry.

In the following table, the Counts columns list the number of bonds (or angles) for which Mogul statistics could be retrieved, the number of bonds (or angles) that are observed in the model and the number of bonds (or angles) that are defined in the chemical component dictionary. The Link column lists molecule types, if any, to which the group is linked. The Z score for a bond length (or angle) is the number of standard deviations the observed value is removed from the expected value. A bond length (or angle) with  $|Z| > 2$  is considered an outlier worth inspection. RMSZ is the root-mean-square of all Z scores of the bond lengths (or angles).

Mol	Type	Chain	Res	Link	Bond lengths			Bond angles		
					Counts	RMSZ	$\# Z  > 2$	Counts	RMSZ	$\# Z  > 2$
1	GTP	X	10	1	25,30,34	1.48	3 (12%)	26,47,54	2.19	4 (15%)
1	CCC	X	89	1	16,25,26	0.83	0	19,38,41	1.71	3 (15%)
1	GTP	Y	10	1	27,34,34	1.00	1 (3%)	27,54,54	2.20	4 (14%)
1	CCC	Y	89	1	16,25,26	0.84	0	19,38,41	1.75	5 (26%)

In the following table, the Chirals column lists the number of chiral outliers, the number of chiral centers analysed, the number of these observed in the model and the number defined in the chemical component dictionary. Similar counts are reported in the Torsion and Rings columns. '-' means no outliers of that kind were identified.

Mol	Type	Chain	Res	Link	Chirals	Torsions	Rings
1	GTP	X	10	1	-	0/12/32/38	0/3/3/3
1	CCC	X	89	1	-	0/3/35/36	0/3/3/3
1	GTP	Y	10	1	-	0/18/38/38	0/3/3/3
1	CCC	Y	89	1	-	0/3/35/36	0/3/3/3

All (4) bond length outliers are listed below:

Mol	Chain	Res	Type	Atoms	Z	Observed(Å)	Ideal(Å)
1	X	10	GTP	PB-O3A	-5.31	1.51	1.60

*Continued on next page...*

*Continued from previous page...*

Mol	Chain	Res	Type	Atoms	Z	Observed(Å)	Ideal(Å)
1	X	10	GTP	C8-N7	-2.01	1.30	1.34
1	Y	10	GTP	C6-N1	3.75	1.39	1.33
1	X	10	GTP	C6-N1	3.75	1.39	1.33

The worst 5 of 16 bond angle outliers are listed below:

Mol	Chain	Res	Type	Atoms	Z	Observed(°)	Ideal(°)
1	Y	10	GTP	C5-C6-N1	-8.23	111.76	123.48
1	X	10	GTP	C5-C6-N1	-8.09	111.97	123.48
1	X	89	CCC	O3'-C3'-C2'	-3.96	97.66	105.13
1	Y	89	CCC	O3'-C3'-C2'	-3.69	98.18	105.13
1	Y	10	GTP	C2-N3-C4	-2.86	111.82	115.16

There are no chirality outliers.

There are no torsion outliers.

There are no ring outliers.

1 monomer is involved in 1 short contact:

Mol	Chain	Res	Type	Clashes	Symm-Clashes
1	X	89	CCC	1	0

## 5.5 Carbohydrates [i](#)

There are no carbohydrates in this entry.

## 5.6 Ligand geometry [i](#)

Of 13 ligands modelled in this entry, 11 are monoatomic - leaving 2 for Mogul analysis.

In the following table, the Counts columns list the number of bonds (or angles) for which Mogul statistics could be retrieved, the number of bonds (or angles) that are observed in the model and the number of bonds (or angles) that are defined in the chemical component dictionary. The Link column lists molecule types, if any, to which the group is linked. The Z score for a bond length (or angle) is the number of standard deviations the observed value is removed from the expected value. A bond length (or angle) with  $|Z| > 2$  is considered an outlier worth inspection. RMSZ is the root-mean-square of all Z scores of the bond lengths (or angles).

Mol	Type	Chain	Res	Link	Bond lengths			Bond angles		
					Counts	RMSZ	# Z  > 2	Counts	RMSZ	# Z  > 2
5	TPP	X	100	4	21,27,27	1.14	1 (4%)	25,40,40	2.35	7 (28%)

Mol	Type	Chain	Res	Link	Bond lengths			Bond angles		
					Counts	RMSZ	# Z  > 2	Counts	RMSZ	# Z  > 2
5	TPP	Y	100	4	21,27,27	1.09	2 (9%)	25,40,40	2.50	8 (32%)

In the following table, the Chirals column lists the number of chiral outliers, the number of chiral centers analysed, the number of these observed in the model and the number defined in the chemical component dictionary. Similar counts are reported in the Torsion and Rings columns. '-' means no outliers of that kind were identified.

Mol	Type	Chain	Res	Link	Chirals	Torsions	Rings
5	TPP	X	100	4	-	0/16/17/17	0/2/2/2
5	TPP	Y	100	4	-	0/16/17/17	0/2/2/2

All (3) bond length outliers are listed below:

Mol	Chain	Res	Type	Atoms	Z	Observed(Å)	Ideal(Å)
5	X	100	TPP	C4-N3	-3.58	1.36	1.39
5	Y	100	TPP	C4-N3	-3.27	1.36	1.39
5	Y	100	TPP	PB-O3A	2.02	1.63	1.60

The worst 5 of 15 bond angle outliers are listed below:

Mol	Chain	Res	Type	Atoms	Z	Observed(°)	Ideal(°)
5	X	100	TPP	N1'-C2'-N3'	-2.90	120.58	125.59
5	Y	100	TPP	N1'-C2'-N3'	-2.86	120.63	125.59
5	Y	100	TPP	C5'-C6'-N1'	-2.40	119.80	123.87
5	X	100	TPP	C5'-C6'-N1'	-2.19	120.16	123.87
5	Y	100	TPP	C5'-C7'-N3	-2.12	109.78	113.33

There are no chirality outliers.

There are no torsion outliers.

There are no ring outliers.

2 monomers are involved in 2 short contacts:

Mol	Chain	Res	Type	Clashes	Symm-Clashes
5	X	100	TPP	1	0
5	Y	100	TPP	1	0

## 5.7 Other polymers ⓘ

There are no such residues in this entry.

## 5.8 Polymer linkage issues ⓘ

There are no chain breaks in this entry.

## 6 Fit of model and data [i](#)

### 6.1 Protein, DNA and RNA chains [i](#)

In the following table, the column labelled ‘#RSRZ> 2’ contains the number (and percentage) of RSRZ outliers, followed by percent RSRZ outliers for the chain as percentile scores relative to all X-ray entries and entries of similar resolution. The OWAB column contains the minimum, median, 95<sup>th</sup> percentile and maximum values of the occupancy-weighted average B-factor per residue. The column labelled ‘Q< 0.9’ lists the number of (and percentage) of residues with an average occupancy less than 0.9.

Mol	Chain	Analysed	<RSRZ>	#RSRZ>2	OWAB(Å <sup>2</sup> )	Q<0.9
1	X	78/80 (97%)	-0.22	1 (1%) 77 80	27, 34, 48, 62	0
1	Y	78/80 (97%)	-0.14	1 (1%) 77 80	28, 33, 44, 56	0
All	All	156/160 (97%)	-0.18	2 (1%) 77 80	27, 34, 45, 62	0

All (2) RSRZ outliers are listed below:

Mol	Chain	Res	Type	RSRZ
1	X	55	C	5.7
1	Y	55	C	4.7

### 6.2 Non-standard residues in protein, DNA, RNA chains [i](#)

In the following table, the Atoms column lists the number of modelled atoms in the group and the number defined in the chemical component dictionary. LLDF column lists the quality of electron density of the group with respect to its neighbouring residues in protein, DNA or RNA chains. The B-factors column lists the minimum, median, 95<sup>th</sup> percentile and maximum values of B factors of atoms in the group. The column labelled ‘Q< 0.9’ lists the number of atoms with occupancy less than 0.9.

Mol	Type	Chain	Res	Atoms	RSCC	RSR	LLDF	B-factors(Å <sup>2</sup> )	Q<0.9
1	GTP	X	10	28/32	0.88	0.17	-	29,33,42,42	0
1	CCC	X	89	23/24	0.87	0.19	-	35,37,39,40	0
1	CCC	Y	89	23/24	0.94	0.12	-	32,33,35,35	0
1	GTP	Y	10	32/32	0.85	0.23	-	37,39,51,52	0

### 6.3 Carbohydrates [i](#)

There are no carbohydrates in this entry.

## 6.4 Ligands [i](#)

In the following table, the Atoms column lists the number of modelled atoms in the group and the number defined in the chemical component dictionary. LLDF column lists the quality of electron density of the group with respect to its neighbouring residues in protein, DNA or RNA chains. The B-factors column lists the minimum, median, 95<sup>th</sup> percentile and maximum values of B factors of atoms in the group. The column labelled 'Q< 0.9' lists the number of atoms with occupancy less than 0.9.

Mol	Type	Chain	Res	Atoms	RSCC	RSR	LLDF	B-factors(Å <sup>2</sup> )	Q<0.9
5	TPP	Y	100	26/26	0.93	0.19	1.18	23,31,38,40	0
5	TPP	X	100	26/26	0.95	0.19	0.58	25,32,34,34	0
2	NA	X	122	1/1	0.91	0.16	0.25	36,36,36,36	0
4	MG	Y	111	1/1	0.88	0.15	-0.44	32,32,32,32	0
3	K	X	124	1/1	0.99	0.10	-3.57	39,39,39,39	0
4	MG	X	102	1/1	0.74	0.22	-	34,34,34,34	0
3	K	X	123	1/1	0.97	0.07	-	38,38,38,38	0
2	NA	X	121	1/1	0.94	0.22	-	40,40,40,40	0
4	MG	X	103	1/1	0.93	0.09	-	42,42,42,42	0
4	MG	Y	112	1/1	0.68	0.15	-	31,31,31,31	0
4	MG	Y	113	1/1	0.75	0.19	-	38,38,38,38	0
3	K	X	125	1/1	0.94	0.12	-	39,39,39,39	0
4	MG	X	101	1/1	0.89	0.20	-	32,32,32,32	0

## 6.5 Other polymers [i](#)

There are no such residues in this entry.