



Full wwPDB X-ray Structure Validation Report ⓘ

Feb 13, 2017 – 07:19 pm GMT

PDB ID : 2GEY
Title : Crystal Structure of AclR a putative hydroxylase from Streptomyces galilaeus
Authors : Beinker, P.; Lohkamp, B.; Schneider, G.
Deposited on : 2006-03-21
Resolution : 1.80 Å(reported)

This is a Full wwPDB X-ray Structure Validation Report for a publicly released PDB entry.

We welcome your comments at validation@mail.wwpdb.org

A user guide is available at

<http://wwpdb.org/validation/2016/XrayValidationReportHelp>

with specific help available everywhere you see the ⓘ symbol.

The following versions of software and data (see [references ⓘ](#)) were used in the production of this report:

MolProbity : 4.02b-467
Mogul : 1.7.2 (RC1), CSD as538be (2017)
Xtriage (Phenix) : 1.9-1692
EDS : trunk28620
Percentile statistics : 20161228.v01 (using entries in the PDB archive December 28th 2016)
Refmac : 5.8.0135
CCP4 : 6.5.0
Ideal geometry (proteins) : Engh & Huber (2001)
Ideal geometry (DNA, RNA) : Parkinson et al. (1996)
Validation Pipeline (wwPDB-VP) : recalc28949

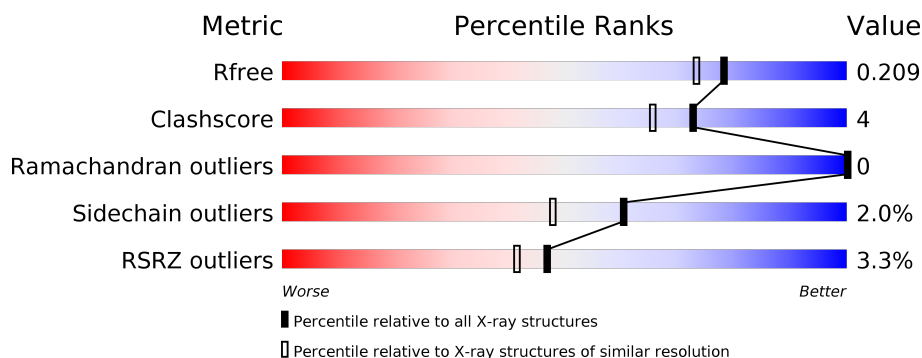
1 Overall quality at a glance

The following experimental techniques were used to determine the structure:

X-RAY DIFFRACTION

The reported resolution of this entry is 1.80 Å.

Percentile scores (ranging between 0-100) for global validation metrics of the entry are shown in the following graphic. The table shows the number of entries on which the scores are based.



Metric	Whole archive (#Entries)	Similar resolution (#Entries, resolution range(Å))
R_{free}	100719	4827 (1.80-1.80)
Clashscore	112137	5742 (1.80-1.80)
Ramachandran outliers	110173	5676 (1.80-1.80)
Sidechain outliers	110143	5675 (1.80-1.80)
RSRZ outliers	101464	4906 (1.80-1.80)

The table below summarises the geometric issues observed across the polymeric chains and their fit to the electron density. The red, orange, yellow and green segments on the lower bar indicate the fraction of residues that contain outliers for ≥ 3 , 2, 1 and 0 types of geometric quality criteria. A grey segment represents the fraction of residues that are not modelled. The numeric value for each fraction is indicated below the corresponding segment, with a dot representing fractions $\leq 5\%$. The upper red bar (where present) indicates the fraction of residues that have poor fit to the electron density. The numeric value is given above the bar.

Mol	Chain	Length	Quality of chain
1	A	158	<div> <div>2%</div> <div> <div></div> <div>92%</div> <div>7%</div> <div>..</div> </div> </div>
1	B	158	<div> <div>6%</div> <div> <div></div> <div>77%</div> <div>7%</div> <div>•</div> <div>16%</div> </div> </div>
1	C	158	<div> <div>3%</div> <div> <div></div> <div>90%</div> <div>•</div> <div>•</div> <div>5%</div> </div> </div>
1	D	158	<div> <div>%</div> <div> <div></div> <div>80%</div> <div>•</div> <div>•</div> <div>16%</div> </div> </div>

The following table lists non-polymeric compounds, carbohydrate monomers and non-standard residues in protein, DNA, RNA chains that are outliers for geometric or electron-density-fit crite-

ria:

Mol	Type	Chain	Res	Chirality	Geometry	Clashes	Electron density
2	PG4	A	1002	-	-	-	X
2	PG4	B	1004	-	-	-	X
2	PG4	C	1001	-	-	-	X
3	GOL	B	2003	-	-	-	X
3	GOL	C	2004	-	-	-	X
4	PEG	A	3001	-	-	-	X

2 Entry composition

There are 5 unique types of molecules in this entry. The entry contains 5413 atoms, of which 0 are hydrogens and 0 are deuteriums.

In the tables below, the ZeroOcc column contains the number of atoms modelled with zero occupancy, the AltConf column contains the number of residues with at least one atom in alternate conformation and the Trace column contains the number of residues modelled with at most 2 atoms.

- Molecule 1 is a protein called AclR protein.

Mol	Chain	Residues	Atoms					ZeroOcc	AltConf	Trace
1	A	157	Total	C	N	O	S	6	11	0
			1308	838	226	235	9			
1	B	133	Total	C	N	O	S	0	10	0
			1117	716	189	202	10			
1	C	150	Total	C	N	O	S	11	8	0
			1224	786	207	222	9			
1	D	133	Total	C	N	O	S	0	12	0
			1127	725	191	201	10			

There are 52 discrepancies between the modelled and reference sequences:

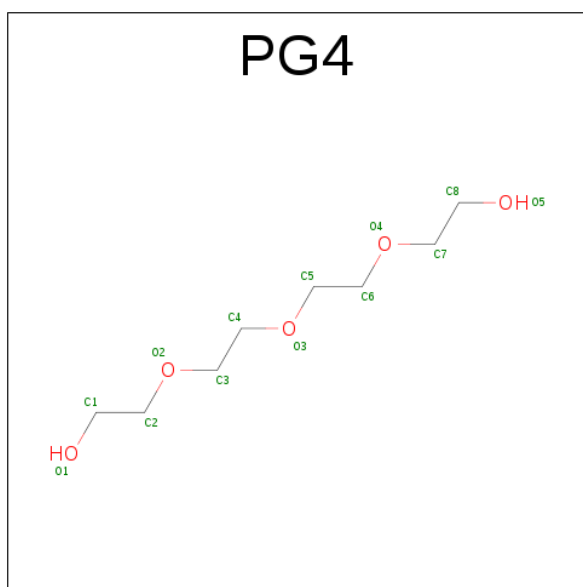
Chain	Residue	Modelled	Actual	Comment	Reference
A	146	LYS	-	EXPRESSION TAG	UNP Q1XDX7
A	147	LEU	-	EXPRESSION TAG	UNP Q1XDX7
A	148	ALA	-	EXPRESSION TAG	UNP Q1XDX7
A	149	ALA	-	EXPRESSION TAG	UNP Q1XDX7
A	150	ALA	-	EXPRESSION TAG	UNP Q1XDX7
A	151	LEU	-	EXPRESSION TAG	UNP Q1XDX7
A	152	GLU	-	EXPRESSION TAG	UNP Q1XDX7
A	153	HIS	-	EXPRESSION TAG	UNP Q1XDX7
A	154	HIS	-	EXPRESSION TAG	UNP Q1XDX7
A	155	HIS	-	EXPRESSION TAG	UNP Q1XDX7
A	156	HIS	-	EXPRESSION TAG	UNP Q1XDX7
A	157	HIS	-	EXPRESSION TAG	UNP Q1XDX7
A	158	HIS	-	EXPRESSION TAG	UNP Q1XDX7
B	146	LYS	-	EXPRESSION TAG	UNP Q1XDX7
B	147	LEU	-	EXPRESSION TAG	UNP Q1XDX7
B	148	ALA	-	EXPRESSION TAG	UNP Q1XDX7
B	149	ALA	-	EXPRESSION TAG	UNP Q1XDX7
B	150	ALA	-	EXPRESSION TAG	UNP Q1XDX7
B	151	LEU	-	EXPRESSION TAG	UNP Q1XDX7
B	152	GLU	-	EXPRESSION TAG	UNP Q1XDX7
B	153	HIS	-	EXPRESSION TAG	UNP Q1XDX7

Continued on next page...

Continued from previous page...

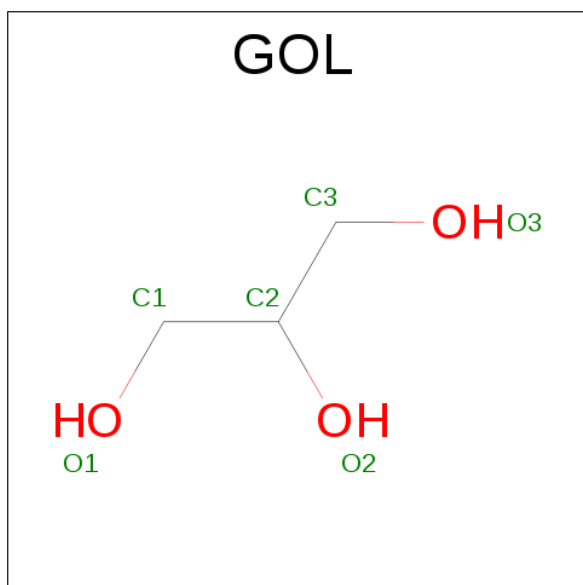
Chain	Residue	Modelled	Actual	Comment	Reference
B	154	HIS	-	EXPRESSION TAG	UNP Q1XDX7
B	155	HIS	-	EXPRESSION TAG	UNP Q1XDX7
B	156	HIS	-	EXPRESSION TAG	UNP Q1XDX7
B	157	HIS	-	EXPRESSION TAG	UNP Q1XDX7
B	158	HIS	-	EXPRESSION TAG	UNP Q1XDX7
C	146	LYS	-	EXPRESSION TAG	UNP Q1XDX7
C	147	LEU	-	EXPRESSION TAG	UNP Q1XDX7
C	148	ALA	-	EXPRESSION TAG	UNP Q1XDX7
C	149	ALA	-	EXPRESSION TAG	UNP Q1XDX7
C	150	ALA	-	EXPRESSION TAG	UNP Q1XDX7
C	151	LEU	-	EXPRESSION TAG	UNP Q1XDX7
C	152	GLU	-	EXPRESSION TAG	UNP Q1XDX7
C	153	HIS	-	EXPRESSION TAG	UNP Q1XDX7
C	154	HIS	-	EXPRESSION TAG	UNP Q1XDX7
C	155	HIS	-	EXPRESSION TAG	UNP Q1XDX7
C	156	HIS	-	EXPRESSION TAG	UNP Q1XDX7
C	157	HIS	-	EXPRESSION TAG	UNP Q1XDX7
C	158	HIS	-	EXPRESSION TAG	UNP Q1XDX7
D	146	LYS	-	EXPRESSION TAG	UNP Q1XDX7
D	147	LEU	-	EXPRESSION TAG	UNP Q1XDX7
D	148	ALA	-	EXPRESSION TAG	UNP Q1XDX7
D	149	ALA	-	EXPRESSION TAG	UNP Q1XDX7
D	150	ALA	-	EXPRESSION TAG	UNP Q1XDX7
D	151	LEU	-	EXPRESSION TAG	UNP Q1XDX7
D	152	GLU	-	EXPRESSION TAG	UNP Q1XDX7
D	153	HIS	-	EXPRESSION TAG	UNP Q1XDX7
D	154	HIS	-	EXPRESSION TAG	UNP Q1XDX7
D	155	HIS	-	EXPRESSION TAG	UNP Q1XDX7
D	156	HIS	-	EXPRESSION TAG	UNP Q1XDX7
D	157	HIS	-	EXPRESSION TAG	UNP Q1XDX7
D	158	HIS	-	EXPRESSION TAG	UNP Q1XDX7

- Molecule 2 is TETRAETHYLENE GLYCOL (three-letter code: PG4) (formula: C₈H₁₈O₅).



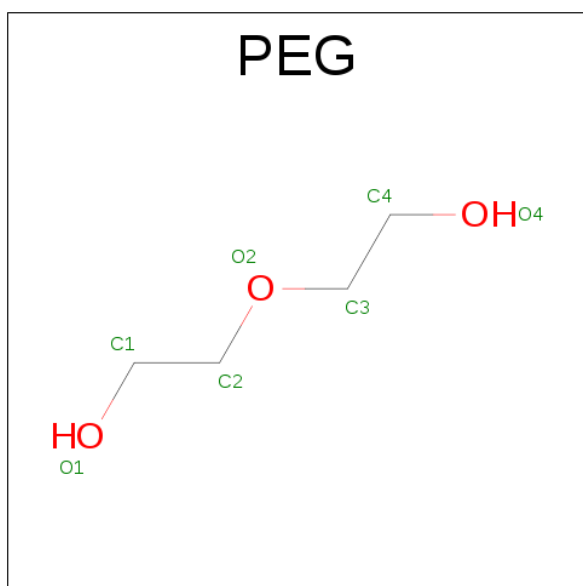
Mol	Chain	Residues	Atoms			ZeroOcc	AltConf
2	C	1	Total	C	O	0	0
			13	8	5		
2	A	1	Total	C	O	0	0
			13	8	5		
2	D	1	Total	C	O	0	0
			13	8	5		
2	B	1	Total	C	O	0	0
			13	8	5		

- Molecule 3 is GLYCEROL (three-letter code: GOL) (formula: $C_3H_8O_3$).



Mol	Chain	Residues	Atoms			ZeroOcc	AltConf
3	A	1	Total	C	O	0	0
			6	3	3		
3	D	1	Total	C	O	0	0
			6	3	3		
3	B	1	Total	C	O	0	0
			6	3	3		
3	C	1	Total	C	O	0	0
			6	3	3		
3	B	1	Total	C	O	0	0
			6	3	3		

- Molecule 4 is DI(HYDROXYETHYL)ETHER (three-letter code: PEG) (formula: C₄H₁₀O₃).



Mol	Chain	Residues	Atoms			ZeroOcc	AltConf
4	A	1	Total	C	O	0	0
			7	4	3		

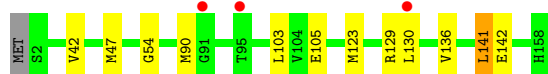
- Molecule 5 is water.

Mol	Chain	Residues	Atoms		ZeroOcc	AltConf
5	A	163	Total	O	0	0
			163	163		
5	B	95	Total	O	0	0
			95	95		
5	C	136	Total	O	0	0
			136	136		
5	D	154	Total	O	0	0
			154	154		

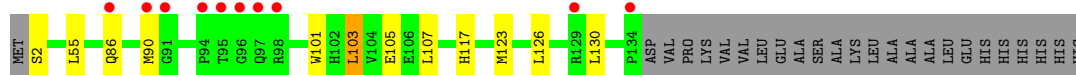
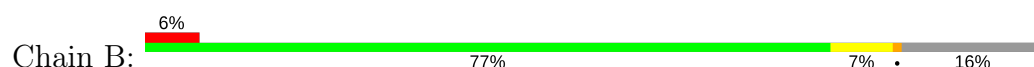
3 Residue-property plots [i](#)

These plots are drawn for all protein, RNA and DNA chains in the entry. The first graphic for a chain summarises the proportions of the various outlier classes displayed in the second graphic. The second graphic shows the sequence view annotated by issues in geometry and electron density. Residues are color-coded according to the number of geometric quality criteria for which they contain at least one outlier: green = 0, yellow = 1, orange = 2 and red = 3 or more. A red dot above a residue indicates a poor fit to the electron density ($RSRZ > 2$). Stretches of 2 or more consecutive residues without any outlier are shown as a green connector. Residues present in the sample, but not in the model, are shown in grey.

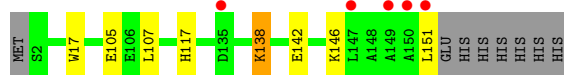
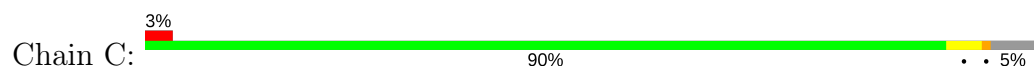
• Molecule 1: AclR protein



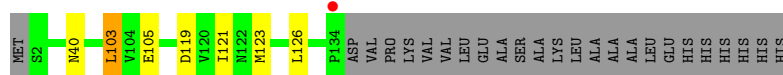
• Molecule 1: AclR protein



• Molecule 1: AclR protein



• Molecule 1: AclR protein



4 Data and refinement statistics

Property	Value	Source
Space group	P 21 21 21	Depositor
Cell constants a, b, c, α , β , γ	80.91Å 81.72Å 136.64Å 90.00° 90.00° 90.00°	Depositor
Resolution (Å)	43.98 – 1.80 40.45 – 1.80	Depositor EDS
% Data completeness (in resolution range)	98.1 (43.98-1.80) 98.1 (40.45-1.80)	Depositor EDS
R_{merge}	(Not available)	Depositor
R_{sym}	0.07	Depositor
$\langle I/\sigma(I) \rangle$ ¹	2.09 (at 1.79Å)	Xtriage
Refinement program	REFMAC 5.2.0005	Depositor
R, R_{free}	0.175 , 0.197 0.185 , 0.209	Depositor DCC
R_{free} test set	4133 reflections (5.25%)	DCC
Wilson B-factor (Å ²)	22.9	Xtriage
Anisotropy	0.047	Xtriage
Bulk solvent k_{sol} (e/Å ³), B_{sol} (Å ²)	0.36 , 44.5	EDS
L-test for twinning ²	$\langle L \rangle = 0.49$, $\langle L^2 \rangle = 0.32$	Xtriage
Estimated twinning fraction	0.014 for k,h,-l	Xtriage
F_o, F_c correlation	0.95	EDS
Total number of atoms	5413	wwPDB-VP
Average B, all atoms (Å ²)	29.0	wwPDB-VP

Xtriage's analysis on translational NCS is as follows: *The largest off-origin peak in the Patterson function is 5.00% of the height of the origin peak. No significant pseudotranslation is detected.*

¹Intensities estimated from amplitudes.

²Theoretical values of $\langle |L| \rangle$, $\langle L^2 \rangle$ for acentric reflections are 0.5, 0.333 respectively for untwinned datasets, and 0.375, 0.2 for perfectly twinned datasets.

5 Model quality [i](#)

5.1 Standard geometry [i](#)

Bond lengths and bond angles in the following residue types are not validated in this section: GOL, PG4, PEG

The Z score for a bond length (or angle) is the number of standard deviations the observed value is removed from the expected value. A bond length (or angle) with $|Z| > 5$ is considered an outlier worth inspection. RMSZ is the root-mean-square of all Z scores of the bond lengths (or angles).

Mol	Chain	Bond lengths		Bond angles	
		RMSZ	$\# Z > 5$	RMSZ	$\# Z > 5$
1	A	0.45	2/1372 (0.1%)	0.58	0/1857
1	B	0.34	0/1168	0.55	0/1579
1	C	0.50	1/1273 (0.1%)	0.59	0/1724
1	D	0.46	0/1187	0.61	0/1605
All	All	0.44	3/5000 (0.1%)	0.58	0/6765

All (3) bond length outliers are listed below:

Mol	Chain	Res	Type	Atoms	Z	Observed(Å)	Ideal(Å)
1	C	142	GLU	CG-CD	11.03	1.68	1.51
1	A	142[A]	GLU	CG-CD	-6.75	1.41	1.51
1	A	142[B]	GLU	CG-CD	-6.75	1.41	1.51

There are no bond angle outliers.

There are no chirality outliers.

There are no planarity outliers.

5.2 Too-close contacts [i](#)

In the following table, the Non-H and H(model) columns list the number of non-hydrogen atoms and hydrogen atoms in the chain respectively. The H(added) column lists the number of hydrogen atoms added and optimized by MolProbity. The Clashes column lists the number of clashes within the asymmetric unit, whereas Symm-Clashes lists symmetry related clashes.

Mol	Chain	Non-H	H(model)	H(added)	Clashes	Symm-Clashes
1	A	1308	0	1328	9	0
1	B	1117	0	1138	13	0
1	C	1224	0	1258	7	2
1	D	1127	0	1163	8	0

Continued on next page...

Continued from previous page...

Mol	Chain	Non-H	H(model)	H(added)	Clashes	Symm-Clashes
2	A	13	0	18	3	0
2	B	13	0	18	1	0
2	C	13	0	18	2	0
2	D	13	0	18	1	0
3	A	6	0	8	0	0
3	B	12	0	16	1	0
3	C	6	0	8	0	0
3	D	6	0	8	0	0
4	A	7	0	9	0	0
5	A	163	0	0	0	0
5	B	95	0	0	0	2
5	C	136	0	0	0	0
5	D	154	0	0	1	0
All	All	5413	0	5008	38	2

The all-atom clashscore is defined as the number of clashes found per 1000 atoms (including hydrogen atoms). The all-atom clashscore for this structure is 4.

All (38) close contacts within the same asymmetric unit are listed below, sorted by their clash magnitude.

Atom-1	Atom-2	Interatomic distance (Å)	Clash overlap (Å)
1:B:107[B]:LEU:CD2	1:B:117[B]:HIS:CD2	2.52	0.92
1:B:107[B]:LEU:HD21	1:B:117[B]:HIS:CD2	2.05	0.92
1:B:107[B]:LEU:CD2	1:B:117[B]:HIS:HD2	1.85	0.89
1:B:107[B]:LEU:HD21	1:B:117[B]:HIS:HD2	1.36	0.86
1:C:105[B]:GLU:CG	1:C:117[B]:HIS:NE2	2.52	0.73
1:C:105[B]:GLU:HG3	1:C:117[B]:HIS:NE2	2.05	0.72
1:B:103[B]:LEU:HD23	1:B:105:GLU:HG3	1.75	0.68
1:D:103[B]:LEU:HB2	1:D:121[B]:ILE:HD13	1.76	0.68
1:B:103[B]:LEU:CD2	1:B:105:GLU:HG3	2.28	0.63
1:D:103[B]:LEU:HD23	1:D:105:GLU:HG2	1.82	0.60
1:C:17:TRP:CH2	2:C:1001:PG4:H41	2.41	0.55
1:D:103[B]:LEU:HB2	1:D:121[B]:ILE:CD1	2.38	0.53
1:B:123[B]:MET:CE	1:B:126:LEU:HD23	2.40	0.52
1:A:123[A]:MET:CE	2:A:1002:PG4:H22	2.39	0.52
1:B:101:TRP:HZ2	2:B:1004:PG4:H21	1.77	0.49
1:C:105[B]:GLU:CD	1:C:117[B]:HIS:CE1	2.86	0.49
1:B:90:MET:HE2	1:B:130:LEU:HD12	1.94	0.48
1:B:107[B]:LEU:HD23	1:B:117[B]:HIS:CD2	2.46	0.47
1:C:105[B]:GLU:HG3	1:C:117[B]:HIS:CE1	2.50	0.47
1:C:105[A]:GLU:OE1	2:C:1001:PG4:H12	2.15	0.47

Continued on next page...

Continued from previous page...

Atom-1	Atom-2	Interatomic distance (Å)	Clash overlap (Å)
1:B:90:MET:CE	1:B:130:LEU:HD12	2.44	0.46
1:D:123[B]:MET:CE	1:D:126:LEU:HD23	2.45	0.46
1:D:103[A]:LEU:HD12	1:D:105:GLU:HG2	1.97	0.45
1:A:103[A]:LEU:CD1	1:A:105:GLU:HG3	2.46	0.45
1:A:54:GLY:HA3	2:A:1002:PG4:H42	1.97	0.45
1:A:90:MET:HE1	1:A:130:LEU:HD12	1.99	0.45
1:A:42:VAL:HG11	1:A:47:MET:HE2	1.99	0.44
1:A:136:VAL:CG1	1:A:141:LEU:HD13	2.48	0.44
1:A:123[A]:MET:SD	2:A:1002:PG4:H22	2.57	0.44
1:D:119:ASP:HB2	1:D:121[B]:ILE:HD11	1.99	0.44
1:B:123[B]:MET:HE2	1:B:126:LEU:HD23	2.00	0.43
1:D:40:ASN:ND2	5:D:2024:HOH:O	2.51	0.43
1:A:103[A]:LEU:HD13	1:A:105:GLU:HG3	2.01	0.43
1:B:2:SER:N	3:B:2003:GOL:HO3	2.18	0.42
2:D:1003:PG4:H41	2:D:1003:PG4:H21	1.82	0.41
1:A:90:MET:HE2	1:A:90:MET:HB2	1.92	0.41
1:C:105[B]:GLU:CG	1:C:117[B]:HIS:CE1	3.04	0.40

All (2) symmetry-related close contacts are listed below. The label for Atom-2 includes the symmetry operator and encoded unit-cell translations to be applied.

Atom-1	Atom-2	Interatomic distance (Å)	Clash overlap (Å)
1:C:138:LYS:NZ	5:B:2045:HOH:O[2_554]	0.52	1.68
1:C:138:LYS:CE	5:B:2045:HOH:O[2_554]	2.03	0.17

5.3 Torsion angles [i](#)

5.3.1 Protein backbone [i](#)

In the following table, the Percentiles column shows the percent Ramachandran outliers of the chain as a percentile score with respect to all X-ray entries followed by that with respect to entries of similar resolution.

The Analysed column shows the number of residues for which the backbone conformation was analysed, and the total number of residues.

Mol	Chain	Analysed	Favoured	Allowed	Outliers	Percentiles	
1	A	166/158 (105%)	164 (99%)	2 (1%)	0	100	100
1	B	141/158 (89%)	139 (99%)	2 (1%)	0	100	100

Continued on next page...

Continued from previous page...

Mol	Chain	Analysed	Favoured	Allowed	Outliers	Percentiles	
1	C	156/158 (99%)	154 (99%)	2 (1%)	0	100	100
1	D	143/158 (90%)	143 (100%)	0	0	100	100
All	All	606/632 (96%)	600 (99%)	6 (1%)	0	100	100

There are no Ramachandran outliers to report.

5.3.2 Protein sidechains ⓘ

In the following table, the Percentiles column shows the percent sidechain outliers of the chain as a percentile score with respect to all X-ray entries followed by that with respect to entries of similar resolution.

The Analysed column shows the number of residues for which the sidechain conformation was analysed, and the total number of residues.

Mol	Chain	Analysed	Rotameric	Outliers	Percentiles	
1	A	146/136 (107%)	144 (99%)	2 (1%)	71	64
1	B	126/136 (93%)	122 (97%)	4 (3%)	44	28
1	C	136/136 (100%)	131 (96%)	5 (4%)	39	22
1	D	128/136 (94%)	126 (98%)	2 (2%)	68	58
All	All	536/544 (98%)	523 (98%)	13 (2%)	60	40

All (13) residues with a non-rotameric sidechain are listed below:

Mol	Chain	Res	Type
1	A	129	ARG
1	A	141	LEU
1	B	55	LEU
1	B	86	GLN
1	B	103[A]	LEU
1	B	103[B]	LEU
1	C	107[A]	LEU
1	C	107[B]	LEU
1	C	138	LYS
1	C	146	LYS
1	C	151	LEU
1	D	103[A]	LEU
1	D	103[B]	LEU

Some sidechains can be flipped to improve hydrogen bonding and reduce clashes. All (4) such sidechains are listed below:

Mol	Chain	Res	Type
1	A	86	GLN
1	A	157	HIS
1	B	86	GLN
1	D	40	ASN

5.3.3 RNA [i](#)

There are no RNA molecules in this entry.

5.4 Non-standard residues in protein, DNA, RNA chains [i](#)

There are no non-standard protein/DNA/RNA residues in this entry.

5.5 Carbohydrates [i](#)

There are no carbohydrates in this entry.

5.6 Ligand geometry [i](#)

10 ligands are modelled in this entry.

In the following table, the Counts columns list the number of bonds (or angles) for which Mogul statistics could be retrieved, the number of bonds (or angles) that are observed in the model and the number of bonds (or angles) that are defined in the chemical component dictionary. The Link column lists molecule types, if any, to which the group is linked. The Z score for a bond length (or angle) is the number of standard deviations the observed value is removed from the expected value. A bond length (or angle) with $|Z| > 2$ is considered an outlier worth inspection. RMSZ is the root-mean-square of all Z scores of the bond lengths (or angles).

Mol	Type	Chain	Res	Link	Bond lengths			Bond angles		
					Counts	RMSZ	$\# Z > 2$	Counts	RMSZ	$\# Z > 2$
2	PG4	A	1002	-	12,12,12	0.60	0	11,11,11	0.64	0
3	GOL	A	2001	-	5,5,5	0.28	0	5,5,5	0.34	0
4	PEG	A	3001	-	6,6,6	0.99	0	5,5,5	1.60	2 (40%)
2	PG4	B	1004	-	12,12,12	0.72	0	11,11,11	0.87	1 (9%)
3	GOL	B	2003	-	5,5,5	0.27	0	5,5,5	0.28	0
3	GOL	B	2005	-	5,5,5	0.33	0	5,5,5	0.21	0
2	PG4	C	1001	-	12,12,12	0.44	0	11,11,11	0.72	0
3	GOL	C	2004	-	5,5,5	0.31	0	5,5,5	0.34	0

Mol	Type	Chain	Res	Link	Bond lengths			Bond angles		
					Counts	RMSZ	# Z > 2	Counts	RMSZ	# Z > 2
2	PG4	D	1003	-	12,12,12	0.52	0	11,11,11	0.49	0
3	GOL	D	2002	-	5,5,5	0.33	0	5,5,5	0.34	0

In the following table, the Chirals column lists the number of chiral outliers, the number of chiral centers analysed, the number of these observed in the model and the number defined in the chemical component dictionary. Similar counts are reported in the Torsion and Rings columns. '-' means no outliers of that kind were identified.

Mol	Type	Chain	Res	Link	Chirals	Torsions	Rings
2	PG4	A	1002	-	-	0/10/10/10	0/0/0/0
3	GOL	A	2001	-	-	0/4/4/4	0/0/0/0
4	PEG	A	3001	-	-	0/4/4/4	0/0/0/0
2	PG4	B	1004	-	-	0/10/10/10	0/0/0/0
3	GOL	B	2003	-	-	0/4/4/4	0/0/0/0
3	GOL	B	2005	-	-	0/4/4/4	0/0/0/0
2	PG4	C	1001	-	-	0/10/10/10	0/0/0/0
3	GOL	C	2004	-	-	0/4/4/4	0/0/0/0
2	PG4	D	1003	-	-	0/10/10/10	0/0/0/0
3	GOL	D	2002	-	-	0/4/4/4	0/0/0/0

There are no bond length outliers.

All (3) bond angle outliers are listed below:

Mol	Chain	Res	Type	Atoms	Z	Observed(°)	Ideal(°)
4	A	3001	PEG	O2-C2-C1	2.11	119.88	110.15
2	B	1004	PG4	O3-C5-C6	2.13	120.18	110.41
4	A	3001	PEG	O2-C3-C4	2.20	120.32	110.15

There are no chirality outliers.

There are no torsion outliers.

There are no ring outliers.

5 monomers are involved in 8 short contacts:

Mol	Chain	Res	Type	Clashes	Symm-Clashes
2	A	1002	PG4	3	0
2	B	1004	PG4	1	0
3	B	2003	GOL	1	0
2	C	1001	PG4	2	0
2	D	1003	PG4	1	0

5.7 Other polymers [i](#)

There are no such residues in this entry.

5.8 Polymer linkage issues [i](#)

There are no chain breaks in this entry.

6 Fit of model and data

6.1 Protein, DNA and RNA chains

In the following table, the column labelled ‘#RSRZ> 2’ contains the number (and percentage) of RSRZ outliers, followed by percent RSRZ outliers for the chain as percentile scores relative to all X-ray entries and entries of similar resolution. The OWAB column contains the minimum, median, 95th percentile and maximum values of the occupancy-weighted average B-factor per residue. The column labelled ‘Q< 0.9’ lists the number of (and percentage) of residues with an average occupancy less than 0.9.

Mol	Chain	Analysed	<RSRZ>	#RSRZ>2	OWAB(Å ²)	Q<0.9
1	A	157/158 (99%)	0.21	3 (1%) 67 63	23, 27, 33, 36	3 (1%)
1	B	133/158 (84%)	0.46	10 (7%) 15 12	24, 28, 34, 38	2 (1%)
1	C	150/158 (94%)	0.18	5 (3%) 47 41	21, 27, 38, 48	12 (8%)
1	D	133/158 (84%)	0.18	1 (0%) 86 84	21, 27, 33, 37	2 (1%)
All	All	573/632 (90%)	0.25	19 (3%) 47 41	21, 27, 35, 48	19 (3%)

All (19) RSRZ outliers are listed below:

Mol	Chain	Res	Type	RSRZ
1	B	134	PRO	4.2
1	D	134	PRO	4.2
1	B	91	GLY	4.0
1	B	97	GLN	3.2
1	C	150	ALA	3.2
1	C	151	LEU	3.2
1	A	95	THR	3.2
1	A	91	GLY	3.1
1	B	86	GLN	2.9
1	B	90	MET	2.9
1	C	135	ASP	2.7
1	B	98	ARG	2.7
1	B	94	PRO	2.6
1	B	129	ARG	2.5
1	B	95	THR	2.4
1	C	147	LEU	2.3
1	B	96	GLY	2.2
1	C	149	ALA	2.1
1	A	130	LEU	2.1

6.2 Non-standard residues in protein, DNA, RNA chains [i](#)

There are no non-standard protein/DNA/RNA residues in this entry.

6.3 Carbohydrates [i](#)

There are no carbohydrates in this entry.

6.4 Ligands [i](#)

In the following table, the Atoms column lists the number of modelled atoms in the group and the number defined in the chemical component dictionary. LLDF column lists the quality of electron density of the group with respect to its neighbouring residues in protein, DNA or RNA chains. The B-factors column lists the minimum, median, 95th percentile and maximum values of B factors of atoms in the group. The column labelled 'Q< 0.9' lists the number of atoms with occupancy less than 0.9.

Mol	Type	Chain	Res	Atoms	RSCC	RSR	LLDF	B-factors(\AA^2)	Q<0.9
3	GOL	C	2004	6/6	0.76	0.31	6.87	45,46,47,48	0
4	PEG	A	3001	7/7	0.70	0.22	6.35	43,45,46,46	0
2	PG4	B	1004	13/13	0.59	0.24	4.89	56,57,58,58	0
2	PG4	A	1002	13/13	0.77	0.20	2.91	47,51,57,57	0
2	PG4	C	1001	13/13	0.80	0.23	2.86	56,57,59,60	0
3	GOL	B	2003	6/6	0.74	0.23	2.19	55,56,56,56	0
3	GOL	A	2001	6/6	0.90	0.19	1.83	42,42,43,43	0
2	PG4	D	1003	13/13	0.83	0.17	1.01	53,54,58,59	0
3	GOL	D	2002	6/6	0.89	0.14	-0.13	45,46,46,47	0
3	GOL	B	2005	6/6	0.88	0.13	-0.29	54,54,55,55	0

6.5 Other polymers [i](#)

There are no such residues in this entry.