



# Full wwPDB X-ray Structure Validation Report ⓘ

Oct 23, 2017 – 09:02 PM EDT

PDB ID : 3GFX  
Title : Klebsiella pneumoniae BlrP1 pH 4.5 calcium/cy-diGMP complex  
Authors : Barends, T.; Hartmann, E.; Griesse, J.; Beitlich, T.; Kirienko, N.; Ryjenkov, D.; Reinstein, J.; Shoeman, R.; Gomelsky, M.; Schlichting, I.  
Deposited on : unknown  
Resolution : 2.40 Å(reported)

This is a Full wwPDB X-ray Structure Validation Report for a publicly released PDB entry.

We welcome your comments at [validation@mail.wwpdb.org](mailto:validation@mail.wwpdb.org)

A user guide is available at

<http://wwpdb.org/validation/2016/XrayValidationReportHelp>

with specific help available everywhere you see the ⓘ symbol.

---

The following versions of software and data (see [references ⓘ](#)) were used in the production of this report:

MolProbity : 4.02b-467  
Mogul : 1.7.2 (RC1), CSD as538be (2017)  
Xtriage (Phenix) : 1.9-1692  
EDS : rb-20030345  
Percentile statistics : 20161228.v01 (using entries in the PDB archive December 28th 2016)  
Refmac : 5.8.0135  
CCP4 : 6.5.0  
Ideal geometry (proteins) : Engh & Huber (2001)  
Ideal geometry (DNA, RNA) : Parkinson et al. (1996)  
Validation Pipeline (wwPDB-VP) : rb-20030345

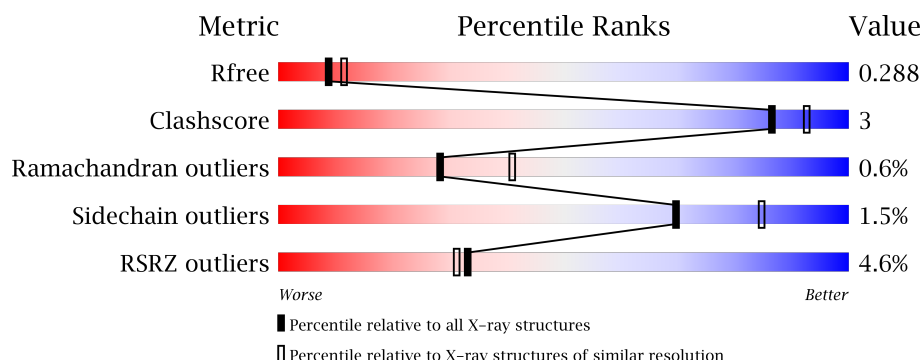
# 1 Overall quality at a glance

The following experimental techniques were used to determine the structure:

## *X-RAY DIFFRACTION*



The reported resolution of this entry is 2.40 Å.

Percentile scores (ranging between 0-100) for global validation metrics of the entry are shown in the following graphic. The table shows the number of entries on which the scores are based.



Metric	Whole archive (#Entries)	Similar resolution (#Entries, resolution range(Å))
$R_{free}$	100719	3166 (2.40-2.40)
Clashscore	112137	3674 (2.40-2.40)
Ramachandran outliers	110173	3616 (2.40-2.40)
Sidechain outliers	110143	3617 (2.40-2.40)
RSRZ outliers	101464	3195 (2.40-2.40)

The table below summarises the geometric issues observed across the polymeric chains and their fit to the electron density. The red, orange, yellow and green segments on the lower bar indicate the fraction of residues that contain outliers for  $\geq 3$ , 2, 1 and 0 types of geometric quality criteria. A grey segment represents the fraction of residues that are not modelled. The numeric value for each fraction is indicated below the corresponding segment, with a dot representing fractions  $\leq 5\%$ . The upper red bar (where present) indicates the fraction of residues that have poor fit to the electron density. The numeric value is given above the bar.

Mol	Chain	Length	Quality of chain
1	A	413	 5% 88% 6% • 5%
1	B	413	 4% 89% 6% 5%

The following table lists non-polymeric compounds, carbohydrate monomers and non-standard residues in protein, DNA, RNA chains that are outliers for geometric or electron-density-fit criteria:

Mol	Type	Chain	Res	Chirality	Geometry	Clashes	Electron density
3	C2E	A	501	X	-	-	-
3	C2E	B	501	X	-	-	-

## 2 Entry composition

There are 5 unique types of molecules in this entry. The entry contains 6725 atoms, of which 0 are hydrogens and 0 are deuteriums.

In the tables below, the ZeroOcc column contains the number of atoms modelled with zero occupancy, the AltConf column contains the number of residues with at least one atom in alternate conformation and the Trace column contains the number of residues modelled with at most 2 atoms.

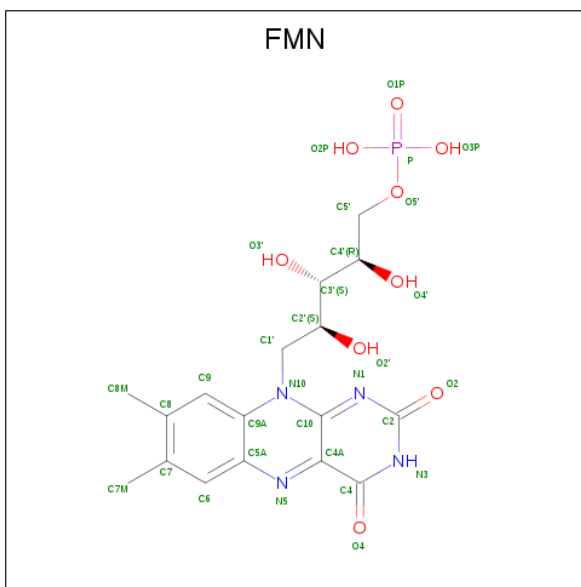
- Molecule 1 is a protein called *Klebsiella pneumoniae* BlrP1.

Mol	Chain	Residues	Atoms					ZeroOcc	AltConf	Trace
1	A	392	Total	C	N	O	S	0	0	0
			3069	1967	529	555	18			
1	B	394	Total	C	N	O	S	0	0	0
			3094	1983	534	559	18			

There are 16 discrepancies between the modelled and reference sequences:

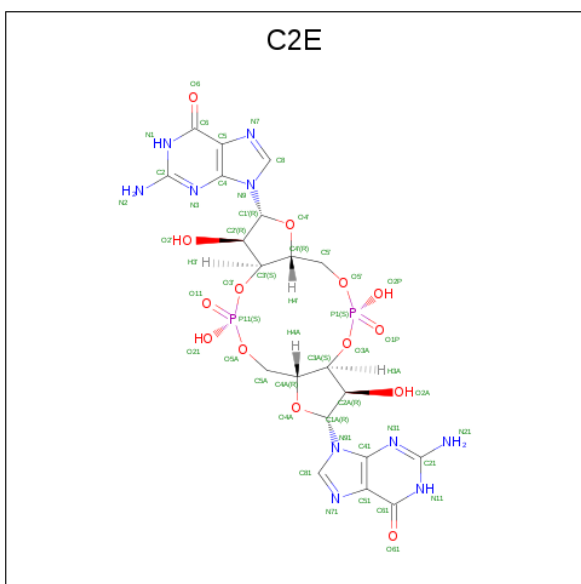
Chain	Residue	Modelled	Actual	Comment	Reference
A	-7	ILE	-	EXPRESSION TAG	UNP A6T8V8
A	-6	SER	-	EXPRESSION TAG	UNP A6T8V8
A	-5	GLU	-	EXPRESSION TAG	UNP A6T8V8
A	-4	PHE	-	EXPRESSION TAG	UNP A6T8V8
A	-3	GLY	-	EXPRESSION TAG	UNP A6T8V8
A	-2	SER	-	EXPRESSION TAG	UNP A6T8V8
A	-1	SER	-	EXPRESSION TAG	UNP A6T8V8
A	0	ARG	-	EXPRESSION TAG	UNP A6T8V8
B	-7	ILE	-	EXPRESSION TAG	UNP A6T8V8
B	-6	SER	-	EXPRESSION TAG	UNP A6T8V8
B	-5	GLU	-	EXPRESSION TAG	UNP A6T8V8
B	-4	PHE	-	EXPRESSION TAG	UNP A6T8V8
B	-3	GLY	-	EXPRESSION TAG	UNP A6T8V8
B	-2	SER	-	EXPRESSION TAG	UNP A6T8V8
B	-1	SER	-	EXPRESSION TAG	UNP A6T8V8
B	0	ARG	-	EXPRESSION TAG	UNP A6T8V8

- Molecule 2 is FLAVIN MONONUCLEOTIDE (three-letter code: FMN) (formula: C<sub>17</sub>H<sub>21</sub>N<sub>4</sub>O<sub>9</sub>P).



Mol	Chain	Residues	Atoms					ZeroOcc	AltConf
2	A	1	Total 31	C 17	N 4	O 9	P 1	0	0
2	B	1	Total 31	C 17	N 4	O 9	P 1	0	0

- Molecule 3 is 9,9'-[(2R,3R,3aS,5S,7aR,9R,10R,10aS,12S,14aR)-3,5,10,12-tetrahydroxy-5,12-dioxidoctahydro-2H,7H-difuro[3,2-d:3',2'-j][1,3,7,9,2,8]tetraoxadiphosphacyclododecine-2,9-diyl]bis(2-amino-1,9-dihydro-6H-purin-6-one) (three-letter code: C2E) (formula: C<sub>20</sub>H<sub>24</sub>N<sub>10</sub>O<sub>14</sub>P<sub>2</sub>).



Mol	Chain	Residues	Atoms					ZeroOcc	AltConf
3	A	1	Total	C	N	O	P	0	0
			46	20	10	14	2		
3	B	1	Total	C	N	O	P	0	0
			46	20	10	14	2		

- Molecule 4 is CALCIUM ION (three-letter code: CA) (formula: Ca).

Mol	Chain	Residues	Atoms		ZeroOcc	AltConf
4	B	1	Total	Ca	0	0
			1	1		
4	A	1	Total	Ca	0	0
			1	1		

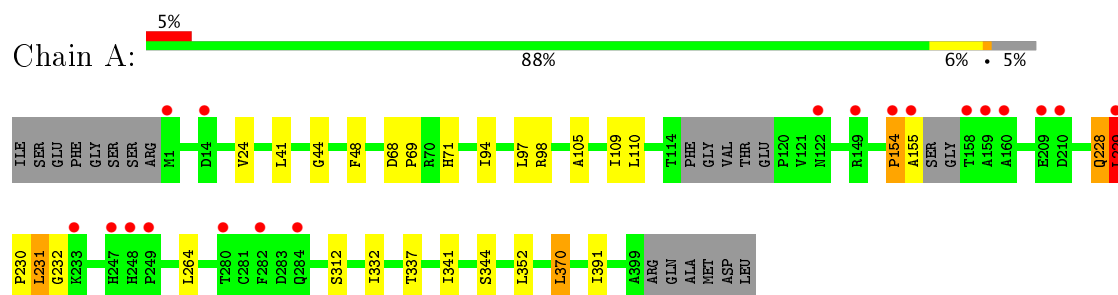
- Molecule 5 is water.

Mol	Chain	Residues	Atoms		ZeroOcc	AltConf
5	A	191	Total	O	0	0
			191	191		
5	B	215	Total	O	0	0
			215	215		

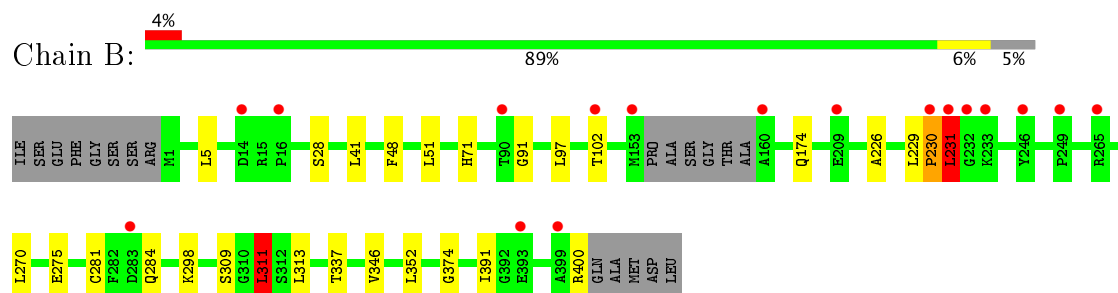
### 3 Residue-property plots [i](#)

These plots are drawn for all protein, RNA and DNA chains in the entry. The first graphic for a chain summarises the proportions of the various outlier classes displayed in the second graphic. The second graphic shows the sequence view annotated by issues in geometry and electron density. Residues are color-coded according to the number of geometric quality criteria for which they contain at least one outlier: green = 0, yellow = 1, orange = 2 and red = 3 or more. A red dot above a residue indicates a poor fit to the electron density ( $RSRZ > 2$ ). Stretches of 2 or more consecutive residues without any outlier are shown as a green connector. Residues present in the sample, but not in the model, are shown in grey.

- Molecule 1: *Klebsiella pneumoniae* BlrP1



- Molecule 1: *Klebsiella pneumoniae* BlrP1



## 4 Data and refinement statistics

Property	Value	Source
Space group	P 21 21 21	Depositor
Cell constants a, b, c, $\alpha$ , $\beta$ , $\gamma$	69.00 Å 96.90 Å 128.50 Å 90.00° 90.00° 90.00°	Depositor
Resolution (Å)	15.00 – 2.40 19.83 – 2.40	Depositor EDS
% Data completeness (in resolution range)	100.0 (15.00-2.40) 98.5 (19.83-2.40)	Depositor EDS
$R_{merge}$	0.10	Depositor
$R_{sym}$	(Not available)	Depositor
$\langle I/\sigma(I) \rangle$ <sup>1</sup>	2.94 (at 2.41 Å)	Xtriage
Refinement program	REFMAC 5.2.0005	Depositor
R, $R_{free}$	0.230 , 0.277 0.245 , 0.288	Depositor DCC
$R_{free}$ test set	1696 reflections (5.30%)	DCC
Wilson B-factor (Å <sup>2</sup> )	21.7	Xtriage
Anisotropy	0.617	Xtriage
Bulk solvent $k_{sol}$ (e/Å <sup>3</sup> ), $B_{sol}$ (Å <sup>2</sup> )	0.33 , 36.0	EDS
L-test for twinning <sup>2</sup>	$\langle  L  \rangle = 0.47$ , $\langle L^2 \rangle = 0.30$	Xtriage
Estimated twinning fraction	No twinning to report.	Xtriage
$F_o, F_c$ correlation	0.89	EDS
Total number of atoms	6725	wwPDB-VP
Average B, all atoms (Å <sup>2</sup> )	24.0	wwPDB-VP

Xtriage's analysis on translational NCS is as follows: *The largest off-origin peak in the Patterson function is 3.64% of the height of the origin peak. No significant pseudotranslation is detected.*

<sup>1</sup>Intensities estimated from amplitudes.

<sup>2</sup>Theoretical values of  $\langle |L| \rangle$ ,  $\langle L^2 \rangle$  for acentric reflections are 0.5, 0.333 respectively for untwinned datasets, and 0.375, 0.2 for perfectly twinned datasets.



## 5 Model quality

### 5.1 Standard geometry

Bond lengths and bond angles in the following residue types are not validated in this section: FMN, CA, C2E

The Z score for a bond length (or angle) is the number of standard deviations the observed value is removed from the expected value. A bond length (or angle) with  $|Z| > 5$  is considered an outlier worth inspection. RMSZ is the root-mean-square of all Z scores of the bond lengths (or angles).

Mol	Chain	Bond lengths		Bond angles	
		RMSZ	$\# Z  > 5$	RMSZ	$\# Z  > 5$
1	A	0.34	0/3137	0.50	1/4252 (0.0%)
1	B	0.32	0/3163	0.51	1/4287 (0.0%)
All	All	0.33	0/6300	0.50	2/8539 (0.0%)

Chiral center outliers are detected by calculating the chiral volume of a chiral center and verifying if the center is modelled as a planar moiety or with the opposite hand. A planarity outlier is detected by checking planarity of atoms in a peptide group, atoms in a mainchain group or atoms of a sidechain that are expected to be planar.

Mol	Chain	#Chirality outliers	#Planarity outliers
1	A	0	1
1	B	0	2
All	All	0	3

There are no bond length outliers.

All (2) bond angle outliers are listed below:

Mol	Chain	Res	Type	Atoms	Z	Observed(°)	Ideal(°)
1	B	311	LEU	CA-CB-CG	5.58	128.13	115.30
1	A	229	LEU	N-CA-C	-5.33	96.61	111.00

There are no chirality outliers.

All (3) planarity outliers are listed below:

Mol	Chain	Res	Type	Group
1	A	228	GLN	Peptide
1	B	230	PRO	Peptide
1	B	231	LEU	Peptide

## 5.2 Too-close contacts ⓘ

In the following table, the Non-H and H(model) columns list the number of non-hydrogen atoms and hydrogen atoms in the chain respectively. The H(added) column lists the number of hydrogen atoms added and optimized by MolProbity. The Clashes column lists the number of clashes within the asymmetric unit, whereas Symm-Clashes lists symmetry related clashes.

Mol	Chain	Non-H	H(model)	H(added)	Clashes	Symm-Clashes
1	A	3069	0	3087	19	0
1	B	3094	0	3110	17	0
2	A	31	0	19	0	0
2	B	31	0	19	0	0
3	A	46	0	18	0	0
3	B	46	0	18	1	0
4	A	1	0	0	0	0
4	B	1	0	0	0	0
5	A	191	0	0	0	0
5	B	215	0	0	0	0
All	All	6725	0	6271	32	0

The all-atom clashscore is defined as the number of clashes found per 1000 atoms (including hydrogen atoms). The all-atom clashscore for this structure is 3.

All (32) close contacts within the same asymmetric unit are listed below, sorted by their clash magnitude.

Atom-1	Atom-2	Interatomic distance (Å)	Clash overlap (Å)
1:A:24:VAL:HG21	1:A:94:ILE:HB	1.78	0.64
1:B:229:LEU:C	1:B:231:LEU:H	2.01	0.64
1:A:229:LEU:N	1:A:229:LEU:CD2	2.62	0.63
1:A:229:LEU:H	1:A:229:LEU:HD23	1.65	0.59
1:A:352:LEU:HD21	1:B:337:THR:HA	1.85	0.57
1:B:229:LEU:O	1:B:231:LEU:N	2.38	0.56
1:A:230:PRO:O	1:A:232:GLY:N	2.40	0.54
1:B:229:LEU:C	1:B:231:LEU:N	2.61	0.53
1:B:229:LEU:HD13	1:B:391:ILE:HG13	1.91	0.52
1:B:226:ALA:O	1:B:231:LEU:HG	2.11	0.51
1:B:281:CYS:HB2	1:B:284:GLN:HB2	1.94	0.50
1:B:41:LEU:HB2	1:B:48:PHE:HB3	1.96	0.47
1:B:270:LEU:HD12	1:B:298:LYS:HB3	1.97	0.47
1:A:341:ILE:HG23	1:B:311:LEU:HD23	1.97	0.46
1:B:28:SER:HB2	1:B:91:GLY:HA3	1.99	0.45
1:A:154:PRO:HB2	1:A:155:ALA:H	1.53	0.44
1:A:229:LEU:N	1:A:229:LEU:HD23	2.26	0.44

*Continued on next page...*

Continued from previous page...

Atom-1	Atom-2	Interatomic distance (Å)	Clash overlap (Å)
1:A:228:GLN:C	1:A:229:LEU:O	2.48	0.44
1:A:41:LEU:HG	1:A:97:LEU:HD21	2.00	0.44
1:A:231:LEU:CD2	1:A:264:LEU:HD22	2.49	0.43
1:A:229:LEU:HD12	1:A:391:ILE:HG13	2.01	0.43
1:A:332:ILE:HG21	1:A:370:LEU:HD13	2.00	0.43
1:A:41:LEU:HB2	1:A:48:PHE:HB3	2.01	0.42
1:B:275:GLU:HG3	1:B:313:LEU:HG	2.01	0.42
1:A:44:GLY:HA2	1:A:98:ARG:HH21	1.84	0.42
1:A:68:ASP:HA	1:A:69:PRO:HD3	1.82	0.41
1:A:337:THR:HA	1:B:352:LEU:HD21	2.03	0.41
1:B:5:LEU:HD23	1:B:51:LEU:HD12	2.01	0.41
1:B:174:GLN:OE1	3:B:501:C2E:H8	2.21	0.41
1:B:346:VAL:HG11	1:B:374:GLY:HA3	2.03	0.41
1:A:105:ALA:O	1:A:109:ILE:HG12	2.20	0.40
1:A:312:SER:HB3	1:B:309:SER:HB2	2.03	0.40

There are no symmetry-related clashes.

## 5.3 Torsion angles

### 5.3.1 Protein backbone

In the following table, the Percentiles column shows the percent Ramachandran outliers of the chain as a percentile score with respect to all X-ray entries followed by that with respect to entries of similar resolution.

The Analysed column shows the number of residues for which the backbone conformation was analysed, and the total number of residues.

Mol	Chain	Analysed	Favoured	Allowed	Outliers	Percentiles	
1	A	386/413 (94%)	378 (98%)	6 (2%)	2 (0%)	32	46
1	B	390/413 (94%)	376 (96%)	11 (3%)	3 (1%)	22	33
All	All	776/826 (94%)	754 (97%)	17 (2%)	5 (1%)	28	41

All (5) Ramachandran outliers are listed below:

Mol	Chain	Res	Type
1	B	102	THR
1	B	231	LEU
1	A	154	PRO

Continued on next page...

*Continued from previous page...*

Mol	Chain	Res	Type
1	B	230	PRO
1	A	231	LEU

### 5.3.2 Protein sidechains ⓘ

In the following table, the Percentiles column shows the percent sidechain outliers of the chain as a percentile score with respect to all X-ray entries followed by that with respect to entries of similar resolution.

The Analysed column shows the number of residues for which the sidechain conformation was analysed, and the total number of residues.

Mol	Chain	Analysed	Rotameric	Outliers	Percentiles	
1	A	329/346 (95%)	324 (98%)	5 (2%)	70	85
1	B	332/346 (96%)	327 (98%)	5 (2%)	70	85
All	All	661/692 (96%)	651 (98%)	10 (2%)	70	85

All (10) residues with a non-rotameric sidechain are listed below:

Mol	Chain	Res	Type
1	A	71	HIS
1	A	110	LEU
1	A	229	LEU
1	A	344	SER
1	A	370	LEU
1	B	71	HIS
1	B	97	LEU
1	B	231	LEU
1	B	311	LEU
1	B	400	ARG

Some sidechains can be flipped to improve hydrogen bonding and reduce clashes. All (1) such sidechains are listed below:

Mol	Chain	Res	Type
1	A	284	GLN

### 5.3.3 RNA ⓘ

There are no RNA molecules in this entry.

## 5.4 Non-standard residues in protein, DNA, RNA chains ⓘ

There are no non-standard protein/DNA/RNA residues in this entry.

## 5.5 Carbohydrates ⓘ

There are no carbohydrates in this entry.

## 5.6 Ligand geometry ⓘ

Of 6 ligands modelled in this entry, 2 are monoatomic - leaving 4 for Mogul analysis.

In the following table, the Counts columns list the number of bonds (or angles) for which Mogul statistics could be retrieved, the number of bonds (or angles) that are observed in the model and the number of bonds (or angles) that are defined in the Chemical Component Dictionary. The Link column lists molecule types, if any, to which the group is linked. The Z score for a bond length (or angle) is the number of standard deviations the observed value is removed from the expected value. A bond length (or angle) with  $|Z| > 2$  is considered an outlier worth inspection. RMSZ is the root-mean-square of all Z scores of the bond lengths (or angles).

Mol	Type	Chain	Res	Link	Bond lengths			Bond angles		
					Counts	RMSZ	# Z  > 2	Counts	RMSZ	# Z  > 2
2	FMN	A	1137	-	31,33,33	1.41	5 (16%)	38,50,50	1.48	5 (13%)
3	C2E	A	501	4	44,52,52	3.10	8 (18%)	50,82,82	2.27	17 (34%)
2	FMN	B	1137	-	31,33,33	1.37	4 (12%)	38,50,50	1.43	4 (10%)
3	C2E	B	501	4	44,52,52	3.10	8 (18%)	50,82,82	2.29	17 (34%)

In the following table, the Chirals column lists the number of chiral outliers, the number of chiral centers analysed, the number of these observed in the model and the number defined in the Chemical Component Dictionary. Similar counts are reported in the Torsion and Rings columns. '-' means no outliers of that kind were identified.

Mol	Type	Chain	Res	Link	Chirals	Torsions	Rings
2	FMN	A	1137	-	-	0/16/18/18	0/3/3/3
3	C2E	A	501	4	1/1/10/10	0/22/62/62	0/6/7/7
2	FMN	B	1137	-	-	0/16/18/18	0/3/3/3
3	C2E	B	501	4	1/1/10/10	0/22/62/62	0/6/7/7

All (25) bond length outliers are listed below:

Mol	Chain	Res	Type	Atoms	Z	Observed(Å)	Ideal(Å)
3	B	501	C2E	C2A-C1A	-13.00	1.33	1.53
3	A	501	C2E	C2A-C1A	-12.94	1.33	1.53

*Continued on next page...*

*Continued from previous page...*

Mol	Chain	Res	Type	Atoms	Z	Observed(Å)	Ideal(Å)
3	B	501	C2E	C2'-C1'	-12.88	1.33	1.53
3	A	501	C2E	C2'-C1'	-12.88	1.33	1.53
3	A	501	C2E	O2'-C2'	-4.16	1.33	1.43
3	B	501	C2E	O2'-C2'	-4.10	1.33	1.43
3	A	501	C2E	O2A-C2A	-4.00	1.33	1.43
3	B	501	C2E	O2A-C2A	-3.97	1.33	1.43
3	A	501	C2E	C8-N7	-2.96	1.29	1.34
3	B	501	C2E	C8-N7	-2.84	1.29	1.34
2	A	1137	FMN	C5A-N5	2.09	1.38	1.35
2	B	1137	FMN	C1'-N10	2.40	1.50	1.48
3	A	501	C2E	P11-O11	2.72	1.61	1.50
2	A	1137	FMN	C1'-N10	2.79	1.51	1.48
3	B	501	C2E	P11-O11	2.82	1.61	1.50
3	A	501	C2E	O4A-C1A	2.86	1.45	1.41
2	B	1137	FMN	C4-N3	3.01	1.38	1.33
2	A	1137	FMN	C4-N3	3.02	1.38	1.33
3	B	501	C2E	O4A-C1A	3.16	1.45	1.41
3	B	501	C2E	O4'-C1'	3.30	1.45	1.41
2	B	1137	FMN	C4A-N5	3.45	1.38	1.33
2	A	1137	FMN	C4A-N5	3.55	1.38	1.33
3	A	501	C2E	O4'-C1'	3.56	1.46	1.41
2	B	1137	FMN	C10-N1	3.88	1.38	1.33
2	A	1137	FMN	C10-N1	3.98	1.38	1.33

All (43) bond angle outliers are listed below:

Mol	Chain	Res	Type	Atoms	Z	Observed(°)	Ideal(°)
3	A	501	C2E	C4A-O4A-C1A	-5.84	103.55	109.77
3	B	501	C2E	C4A-O4A-C1A	-5.58	103.83	109.77
3	A	501	C2E	N31-C21-N11	-4.62	120.72	127.46
3	B	501	C2E	N31-C21-N11	-4.59	120.75	127.46
3	B	501	C2E	N3-C2-N1	-4.54	120.83	127.46
3	A	501	C2E	N3-C2-N1	-4.34	121.11	127.46
3	B	501	C2E	C4-C5-N7	-4.31	105.24	109.41
3	A	501	C2E	C4-C5-N7	-4.12	105.43	109.41
3	A	501	C2E	C5-C6-N1	-3.28	118.81	123.48
3	B	501	C2E	C5-C6-N1	-3.27	118.83	123.48
3	B	501	C2E	O5A-C5A-C4A	-3.23	97.54	109.00
3	A	501	C2E	C51-C61-N11	-3.14	119.02	123.48
3	B	501	C2E	C51-C61-N11	-3.09	119.08	123.48
3	A	501	C2E	O5A-C5A-C4A	-3.03	98.26	109.00
2	B	1137	FMN	C4A-C4-N3	-2.74	119.58	123.48

*Continued on next page...*

*Continued from previous page...*

Mol	Chain	Res	Type	Atoms	Z	Observed(°)	Ideal(°)
3	B	501	C2E	C4'-O4'-C1'	-2.63	106.97	109.77
2	A	1137	FMN	C4A-C4-N3	-2.63	119.74	123.48
3	B	501	C2E	C1'-N9-C4	-2.16	122.90	126.64
3	A	501	C2E	C4'-O4'-C1'	-2.05	107.58	109.77
3	A	501	C2E	C61-C51-C41	-2.02	118.83	120.84
2	A	1137	FMN	C1'-N10-C9A	2.12	120.29	118.35
2	B	1137	FMN	C5A-C9A-N10	2.64	119.62	117.66
3	A	501	C2E	O2'-C2'-C3'	2.98	119.67	111.18
3	B	501	C2E	O21-P11-O5A	2.99	122.28	108.14
3	B	501	C2E	O2'-C2'-C3'	3.03	119.80	111.18
2	A	1137	FMN	C5A-C9A-N10	3.13	119.98	117.66
3	B	501	C2E	O2'-C2'-C1'	3.13	121.42	111.61
3	A	501	C2E	O2'-C2'-C1'	3.15	121.48	111.61
3	A	501	C2E	O21-P11-O5A	3.17	123.12	108.14
2	B	1137	FMN	C4A-N5-C5A	3.27	120.21	116.76
2	A	1137	FMN	C4A-N5-C5A	3.52	120.48	116.76
3	A	501	C2E	C2-N3-C4	3.57	119.33	115.16
3	B	501	C2E	C21-N31-C41	3.62	119.39	115.16
3	A	501	C2E	C6-N1-C2	3.63	121.28	116.06
3	A	501	C2E	C61-N11-C21	3.65	121.31	116.06
3	B	501	C2E	C61-N11-C21	3.66	121.32	116.06
3	B	501	C2E	C6-N1-C2	3.71	121.39	116.06
3	B	501	C2E	C2-N3-C4	3.72	119.50	115.16
3	A	501	C2E	C21-N31-C41	3.73	119.51	115.16
3	B	501	C2E	C3'-C2'-C1'	4.17	109.33	99.95
3	A	501	C2E	C3'-C2'-C1'	4.38	109.80	99.95
2	A	1137	FMN	C4-N3-C2	5.74	120.18	115.16
2	B	1137	FMN	C4-N3-C2	5.87	120.29	115.16

All (2) chirality outliers are listed below:

Mol	Chain	Res	Type	Atom
3	A	501	C2E	C1A
3	B	501	C2E	C1A

There are no torsion outliers.

There are no ring outliers.

1 monomer is involved in 1 short contact:

Mol	Chain	Res	Type	Clashes	Symm-Clashes
3	B	501	C2E	1	0

## 5.7 Other polymers

There are no such residues in this entry.

## 5.8 Polymer linkage issues

There are no chain breaks in this entry.



## 6 Fit of model and data ⓘ

### 6.1 Protein, DNA and RNA chains ⓘ

In the following table, the column labelled ‘#RSRZ> 2’ contains the number (and percentage) of RSRZ outliers, followed by percent RSRZ outliers for the chain as percentile scores relative to all X-ray entries and entries of similar resolution. The OWAB column contains the minimum, median, 95<sup>th</sup> percentile and maximum values of the occupancy-weighted average B-factor per residue. The column labelled ‘Q< 0.9’ lists the number of (and percentage) of residues with an average occupancy less than 0.9.

Mol	Chain	Analysed	<RSRZ>	#RSRZ>2	OWAB(Å <sup>2</sup> )	Q<0.9
1	A	392/413 (94%)	0.27	19 (4%) 31 30	19, 25, 32, 39	0
1	B	394/413 (95%)	0.25	17 (4%) 36 34	18, 25, 30, 33	0
All	All	786/826 (95%)	0.26	36 (4%) 33 31	18, 25, 31, 39	0

All (36) RSRZ outliers are listed below:

Mol	Chain	Res	Type	RSRZ
1	B	90	THR	5.0
1	A	282	PHE	4.7
1	B	102	THR	4.6
1	A	149	ARG	4.2
1	B	249	PRO	4.1
1	A	14	ASP	3.9
1	A	158	THR	3.9
1	B	14	ASP	3.8
1	B	231	LEU	3.7
1	A	229	LEU	3.6
1	A	248	HIS	3.5
1	B	16	PRO	3.5
1	A	155	ALA	3.5
1	B	283	ASP	3.4
1	A	154	PRO	3.0
1	B	153	MET	3.0
1	B	233	LYS	2.9
1	A	209	GLU	2.9
1	A	1	MET	2.9
1	A	247	HIS	2.9
1	B	265	ARG	2.8
1	A	210	ASP	2.8
1	B	232	GLY	2.7
1	B	160	ALA	2.7

*Continued on next page...*

*Continued from previous page...*

Mol	Chain	Res	Type	RSRZ
1	B	246	TYR	2.7
1	B	393	GLU	2.5
1	B	399	ALA	2.3
1	A	122	ASN	2.3
1	A	280	THR	2.3
1	A	160	ALA	2.3
1	A	284	GLN	2.3
1	A	159	ALA	2.3
1	A	233	LYS	2.2
1	A	249	PRO	2.1
1	B	209	GLU	2.0
1	B	230	PRO	2.0

## 6.2 Non-standard residues in protein, DNA, RNA chains [i](#)

There are no non-standard protein/DNA/RNA residues in this entry.

## 6.3 Carbohydrates [i](#)

There are no carbohydrates in this entry.

## 6.4 Ligands [i](#)

In the following table, the Atoms column lists the number of modelled atoms in the group and the number defined in the chemical component dictionary. LLDF column lists the quality of electron density of the group with respect to its neighbouring residues in protein, DNA or RNA chains. The B-factors column lists the minimum, median, 95<sup>th</sup> percentile and maximum values of B factors of atoms in the group. The column labelled 'Q< 0.9' lists the number of atoms with occupancy less than 0.9.

Mol	Type	Chain	Res	Atoms	RSCC	RSR	LLDF	B-factors( $\text{\AA}^2$ )	Q<0.9
2	FMN	A	1137	31/31	0.87	0.15	-0.84	18,19,27,27	0
2	FMN	B	1137	31/31	0.87	0.16	-0.85	19,19,30,30	0
3	C2E	B	501	46/46	0.93	0.13	-0.93	17,17,18,18	0
3	C2E	A	501	46/46	0.95	0.12	-1.49	14,15,16,17	0
4	CA	A	503	1/1	0.98	0.03	-4.15	18,18,18,18	0
4	CA	B	503	1/1	0.95	0.06	-	19,19,19,19	0

## 6.5 Other polymers

There are no such residues in this entry.