



Full wwPDB X-ray Structure Validation Report ⓘ

Oct 16, 2017 – 09:56 AM EDT

PDB ID : 2GGX
Title : Crystal structure of the trimer neck and carbohydrate recognition domain of human surfactant protein D in complex with p-nitrophenyl maltoside
Authors : Head, J.
Deposited on : unknown
Resolution : 1.90 Å(reported)

This is a Full wwPDB X-ray Structure Validation Report for a publicly released PDB entry.

We welcome your comments at validation@mail.wwpdb.org

A user guide is available at

<http://wwpdb.org/validation/2016/XrayValidationReportHelp>

with specific help available everywhere you see the ⓘ symbol.

The following versions of software and data (see [references ⓘ](#)) were used in the production of this report:

MolProbity : 4.02b-467
Mogul : 1.7.2 (RC1), CSD as538be (2017)
Xtriage (Phenix) : 1.9-1692
EDS : rb-20030345
Percentile statistics : 20161228.v01 (using entries in the PDB archive December 28th 2016)
Refmac : 5.8.0135
CCP4 : 6.5.0
Ideal geometry (proteins) : Engh & Huber (2001)
Ideal geometry (DNA, RNA) : Parkinson et al. (1996)
Validation Pipeline (wwPDB-VP) : rb-20030345

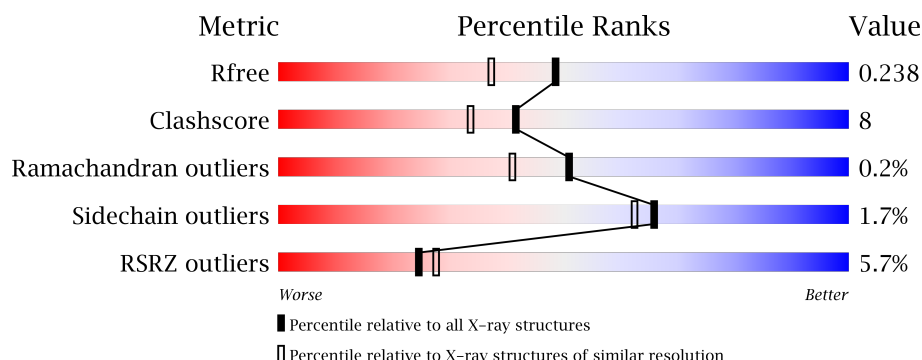
1 Overall quality at a glance

The following experimental techniques were used to determine the structure:

X-RAY DIFFRACTION

The reported resolution of this entry is 1.90 Å.

Percentile scores (ranging between 0-100) for global validation metrics of the entry are shown in the following graphic. The table shows the number of entries on which the scores are based.



Metric	Whole archive (#Entries)	Similar resolution (#Entries, resolution range(Å))
R_{free}	100719	5047 (1.90-1.90)
Clashscore	112137	5731 (1.90-1.90)
Ramachandran outliers	110173	5669 (1.90-1.90)
Sidechain outliers	110143	5670 (1.90-1.90)
RSRZ outliers	101464	5100 (1.90-1.90)

The table below summarises the geometric issues observed across the polymeric chains and their fit to the electron density. The red, orange, yellow and green segments on the lower bar indicate the fraction of residues that contain outliers for ≥ 3 , 2, 1 and 0 types of geometric quality criteria. A grey segment represents the fraction of residues that are not modelled. The numeric value for each fraction is indicated below the corresponding segment, with a dot representing fractions $\leq 5\%$. The upper red bar (where present) indicates the fraction of residues that have poor fit to the electron density. The numeric value is given above the bar.

Mol	Chain	Length	Quality of chain
1	A	160	<div> <div>5%</div> <div> <div></div> <div>78%</div> <div>16%</div> <div>• 6%</div> </div> </div>
1	B	160	<div> <div>4%</div> <div> <div></div> <div>84%</div> <div>10%</div> <div>6%</div> </div> </div>
1	C	160	<div> <div>7%</div> <div> <div></div> <div>78%</div> <div>16%</div> <div>• 6%</div> </div> </div>

The following table lists non-polymeric compounds, carbohydrate monomers and non-standard residues in protein, DNA, RNA chains that are outliers for geometric or electron-density-fit criteria:

Mol	Type	Chain	Res	Chirality	Geometry	Clashes	Electron density
3	NPJ	A	700	-	-	-	X
3	NPJ	C	700	-	-	-	X

2 Entry composition

There are 4 unique types of molecules in this entry. The entry contains 3823 atoms, of which 0 are hydrogens and 0 are deuteriums.

In the tables below, the ZeroOcc column contains the number of atoms modelled with zero occupancy, the AltConf column contains the number of residues with at least one atom in alternate conformation and the Trace column contains the number of residues modelled with at most 2 atoms.

- Molecule 1 is a protein called Pulmonary surfactant-associated protein D.

Mol	Chain	Residues	Atoms					ZeroOcc	AltConf	Trace
1	A	151	Total	C	N	O	S	0	0	0
			1154	723	197	229	5			
1	B	151	Total	C	N	O	S	0	0	0
			1154	723	197	229	5			
1	C	151	Total	C	N	O	S	0	0	0
			1154	723	197	229	5			

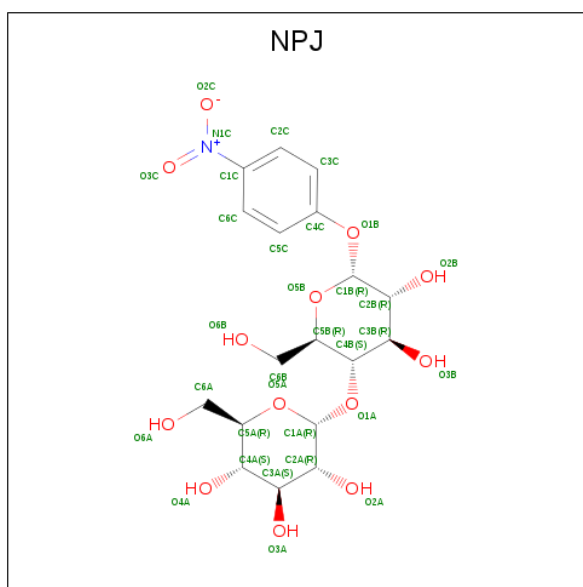
There are 21 discrepancies between the modelled and reference sequences:

Chain	Residue	Modelled	Actual	Comment	Reference
A	196	ALA	-	CLONING ARTIFACT	UNP P35247
A	197	MET	-	CLONING ARTIFACT	UNP P35247
A	198	ALA	-	CLONING ARTIFACT	UNP P35247
A	199	ASP	-	CLONING ARTIFACT	UNP P35247
A	200	ILE	-	CLONING ARTIFACT	UNP P35247
A	201	GLY	-	CLONING ARTIFACT	UNP P35247
A	202	SER	-	CLONING ARTIFACT	UNP P35247
B	196	ALA	-	CLONING ARTIFACT	UNP P35247
B	197	MET	-	CLONING ARTIFACT	UNP P35247
B	198	ALA	-	CLONING ARTIFACT	UNP P35247
B	199	ASP	-	CLONING ARTIFACT	UNP P35247
B	200	ILE	-	CLONING ARTIFACT	UNP P35247
B	201	GLY	-	CLONING ARTIFACT	UNP P35247
B	202	SER	-	CLONING ARTIFACT	UNP P35247
C	196	ALA	-	CLONING ARTIFACT	UNP P35247
C	197	MET	-	CLONING ARTIFACT	UNP P35247
C	198	ALA	-	CLONING ARTIFACT	UNP P35247
C	199	ASP	-	CLONING ARTIFACT	UNP P35247
C	200	ILE	-	CLONING ARTIFACT	UNP P35247
C	201	GLY	-	CLONING ARTIFACT	UNP P35247
C	202	SER	-	CLONING ARTIFACT	UNP P35247

- Molecule 2 is CALCIUM ION (three-letter code: CA) (formula: Ca).

Mol	Chain	Residues	Atoms	ZeroOcc	AltConf
2	B	3	Total Ca 3 3	0	0
2	A	3	Total Ca 3 3	0	0
2	C	3	Total Ca 3 3	0	0

- Molecule 3 is 4-NITROPHENYL 4-O-ALPHA-D-GLUCOPYRANOSYL-ALPHA-D-GALACTOPYRANOSIDE (three-letter code: NPJ) (formula: $C_{18}H_{25}NO_{13}$).

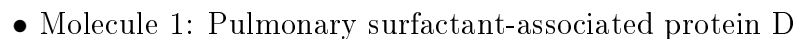
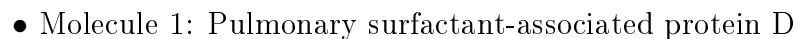


Mol	Chain	Residues	Atoms	ZeroOcc	AltConf
3	A	1	Total C N O 32 18 1 13	0	0
3	B	1	Total C N O 32 18 1 13	0	0
3	C	1	Total C N O 32 18 1 13	0	0

- Molecule 4 is water.

Mol	Chain	Residues	Atoms	ZeroOcc	AltConf
4	A	88	Total O 88 88	0	0
4	B	89	Total O 89 89	0	0
4	C	79	Total O 79 79	0	0

- Molecule 1: Pulmonary surfactant-associated protein D



4 Data and refinement statistics

Property	Value	Source
Space group	P 1 21 1	Depositor
Cell constants a, b, c, α , β , γ	55.43Å 106.40Å 55.08Å 90.00° 92.65° 90.00°	Depositor
Resolution (Å)	50.00 – 1.90 39.96 – 1.66	Depositor EDS
% Data completeness (in resolution range)	95.9 (50.00-1.90) 91.1 (39.96-1.66)	Depositor EDS
R_{merge}	0.07	Depositor
R_{sym}	(Not available)	Depositor
$\langle I/\sigma(I) \rangle$ ¹	0.61 (at 1.66Å)	Xtriage
Refinement program	CNS	Depositor
R, R_{free}	0.214 , 0.238 0.213 , 0.238	Depositor DCC
R_{free} test set	3953 reflections (8.22%)	DCC
Wilson B-factor (Å ²)	22.3	Xtriage
Anisotropy	0.265	Xtriage
Bulk solvent k_{sol} (e/Å ³), B_{sol} (Å ²)	0.37 , 45.5	EDS
L-test for twinning ²	$\langle L \rangle = 0.48$, $\langle L^2 \rangle = 0.31$	Xtriage
Estimated twinning fraction	0.007 for -l,k,h 0.037 for -h,-k,l 0.030 for l,-k,h	Xtriage
F_o , F_c correlation	0.95	EDS
Total number of atoms	3823	wwPDB-VP
Average B, all atoms (Å ²)	29.0	wwPDB-VP

Xtriage's analysis on translational NCS is as follows: *The largest off-origin peak in the Patterson function is 5.77% of the height of the origin peak. No significant pseudotranslation is detected.*

¹ Intensities estimated from amplitudes.

² Theoretical values of $\langle |L| \rangle$, $\langle L^2 \rangle$ for acentric reflections are 0.5, 0.333 respectively for untwinned datasets, and 0.375, 0.2 for perfectly twinned datasets.

5 Model quality [i](#)

5.1 Standard geometry [i](#)

Bond lengths and bond angles in the following residue types are not validated in this section: CA, NPJ

The Z score for a bond length (or angle) is the number of standard deviations the observed value is removed from the expected value. A bond length (or angle) with $|Z| > 5$ is considered an outlier worth inspection. RMSZ is the root-mean-square of all Z scores of the bond lengths (or angles).

Mol	Chain	Bond lengths		Bond angles	
		RMSZ	# Z >5	RMSZ	# Z >5
1	A	0.33	0/1176	0.55	0/1588
1	B	0.33	0/1176	0.54	0/1588
1	C	0.33	0/1176	0.55	0/1588
All	All	0.33	0/3528	0.55	0/4764

There are no bond length outliers.

There are no bond angle outliers.

There are no chirality outliers.

There are no planarity outliers.

5.2 Too-close contacts [i](#)

In the following table, the Non-H and H(model) columns list the number of non-hydrogen atoms and hydrogen atoms in the chain respectively. The H(added) column lists the number of hydrogen atoms added and optimized by MolProbity. The Clashes column lists the number of clashes within the asymmetric unit, whereas Symm-Clashes lists symmetry related clashes.

Mol	Chain	Non-H	H(model)	H(added)	Clashes	Symm-Clashes
1	A	1154	0	1110	20	0
1	B	1154	0	1110	20	0
1	C	1154	0	1110	30	0
2	A	3	0	0	0	0
2	B	3	0	0	0	0
2	C	3	0	0	0	0
3	A	32	0	23	1	0
3	B	32	0	23	0	0
3	C	32	0	23	0	0
4	A	88	0	0	1	0

Continued on next page...

Continued from previous page...

Mol	Chain	Non-H	H(model)	H(added)	Clashes	Symm-Clashes
4	B	89	0	0	0	0
4	C	79	0	0	1	0
All	All	3823	0	3399	56	0

The all-atom clashscore is defined as the number of clashes found per 1000 atoms (including hydrogen atoms). The all-atom clashscore for this structure is 8.

All (56) close contacts within the same asymmetric unit are listed below, sorted by their clash magnitude.

Atom-1	Atom-2	Interatomic distance (Å)	Clash overlap (Å)
1:C:207:LEU:HD12	1:C:208:ARG:N	1.99	0.77
1:B:207:LEU:HD21	1:C:208:ARG:HD2	1.69	0.74
1:B:210:GLN:O	1:B:214:LEU:HD13	1.88	0.74
1:B:207:LEU:HD21	1:C:208:ARG:HH11	1.55	0.71
1:C:211:VAL:O	1:C:215:GLN:HG3	1.93	0.68
1:C:211:VAL:HG12	1:C:215:GLN:NE2	2.12	0.65
1:B:214:LEU:HD23	1:C:214:LEU:HD22	1.81	0.63
1:A:210:GLN:HE21	1:B:211:VAL:CG1	2.15	0.60
1:C:212:GLU:HA	1:C:215:GLN:NE2	2.17	0.59
1:C:211:VAL:HG12	1:C:215:GLN:HE21	1.68	0.58
1:B:214:LEU:HD23	1:C:214:LEU:HD13	1.84	0.58
1:C:211:VAL:C	1:C:215:GLN:HE21	2.07	0.57
1:A:210:GLN:HE21	1:B:211:VAL:HG12	1.70	0.56
1:A:253:PRO:HB2	1:A:256:GLU:OE1	2.05	0.56
1:A:337:ASN:ND2	3:A:700:NPJ:H6C	2.21	0.56
1:C:209:GLN:HG3	4:C:758:HOH:O	2.05	0.56
1:A:207:LEU:HD21	1:B:208:ARG:HA	1.89	0.54
1:B:207:LEU:HD21	1:C:208:ARG:CD	2.36	0.54
1:C:207:LEU:HD12	1:C:208:ARG:H	1.73	0.54
1:C:295:MET:HG2	1:C:312:LEU:HD21	1.91	0.52
1:B:295:MET:HG2	1:B:312:LEU:HD21	1.94	0.50
1:B:207:LEU:O	1:B:211:VAL:HG23	2.10	0.50
1:B:295:MET:HG2	1:B:312:LEU:CD2	2.44	0.48
1:A:297:ASP:OD1	1:A:330:ASP:HA	2.15	0.47
1:A:214:LEU:HB3	1:C:214:LEU:HD11	1.95	0.47
1:B:207:LEU:HD11	1:C:208:ARG:HD3	1.96	0.47
1:A:208:ARG:O	1:A:212:GLU:HB2	2.15	0.46
1:C:291:ALA:HB2	1:C:350:LEU:HB3	1.96	0.46
1:A:232:GLU:OE1	1:C:232:GLU:OE1	2.33	0.46
1:A:284:VAL:HG13	1:A:289:GLU:O	2.17	0.45
1:B:297:ASP:OD1	1:B:330:ASP:HA	2.17	0.45

Continued on next page...

Continued from previous page...

Atom-1	Atom-2	Interatomic distance (Å)	Clash overlap (Å)
1:A:315:SER:HA	1:A:340:TRP:CH2	2.51	0.45
1:C:213:ALA:O	1:C:217:GLN:HG3	2.17	0.45
1:C:214:LEU:HD23	1:C:214:LEU:O	2.17	0.44
1:C:292:PHE:CD2	1:C:349:ARG:HB2	2.51	0.44
1:A:240:VAL:HG13	1:A:240:VAL:O	2.17	0.44
1:A:343:ARG:NE	1:A:349:ARG:NH2	2.65	0.43
1:A:206:SER:O	1:A:209:GLN:NE2	2.50	0.43
1:A:315:SER:HA	1:A:340:TRP:CZ3	2.53	0.43
1:B:210:GLN:HA	1:B:210:GLN:OE1	2.19	0.42
1:C:214:LEU:HD23	1:C:218:VAL:HG23	2.01	0.42
1:C:240:VAL:O	1:C:240:VAL:HG13	2.20	0.42
1:C:297:ASP:OD1	1:C:330:ASP:HA	2.20	0.41
1:A:229:LYS:HE2	4:A:740:HOH:O	2.21	0.41
1:A:234:PHE:HA	1:A:235:PRO:HA	1.81	0.41
1:B:310:GLU:HG2	1:B:311:SER:O	2.21	0.41
1:B:323:ASN:O	1:B:324:ASP:C	2.59	0.41
1:B:207:LEU:CD2	1:C:208:ARG:HD2	2.44	0.41
1:A:211:VAL:O	1:A:215:GLN:HG3	2.21	0.41
1:C:295:MET:HG2	1:C:312:LEU:CD2	2.51	0.41
1:B:214:LEU:CD2	1:C:214:LEU:HD22	2.50	0.41
1:A:214:LEU:HD11	1:B:215:GLN:HG3	2.02	0.41
1:C:225:PHE:CE2	1:C:229:LYS:HD3	2.57	0.40
1:C:221:LEU:HD23	1:C:221:LEU:HA	1.88	0.40
1:A:292:PHE:CD2	1:A:349:ARG:HB2	2.56	0.40
1:C:207:LEU:O	1:C:209:GLN:N	2.54	0.40

There are no symmetry-related clashes.

5.3 Torsion angles ⓘ

5.3.1 Protein backbone ⓘ

In the following table, the Percentiles column shows the percent Ramachandran outliers of the chain as a percentile score with respect to all X-ray entries followed by that with respect to entries of similar resolution.

The Analysed column shows the number of residues for which the backbone conformation was analysed, and the total number of residues.

Mol	Chain	Analysed	Favoured	Allowed	Outliers	Percentiles	
1	A	149/160 (93%)	145 (97%)	4 (3%)	0	100	100

Continued on next page...

Continued from previous page...

Mol	Chain	Analysed	Favoured	Allowed	Outliers	Percentiles	
1	B	149/160 (93%)	146 (98%)	3 (2%)	0	100	100
1	C	149/160 (93%)	145 (97%)	3 (2%)	1 (1%)	25	13
All	All	447/480 (93%)	436 (98%)	10 (2%)	1 (0%)	51	41

All (1) Ramachandran outliers are listed below:

Mol	Chain	Res	Type
1	C	208	ARG

5.3.2 Protein sidechains [i](#)

In the following table, the Percentiles column shows the percent sidechain outliers of the chain as a percentile score with respect to all X-ray entries followed by that with respect to entries of similar resolution.

The Analysed column shows the number of residues for which the sidechain conformation was analysed, and the total number of residues.

Mol	Chain	Analysed	Rotameric	Outliers	Percentiles	
1	A	121/127 (95%)	120 (99%)	1 (1%)	85	85
1	B	121/127 (95%)	119 (98%)	2 (2%)	66	62
1	C	121/127 (95%)	118 (98%)	3 (2%)	53	45
All	All	363/381 (95%)	357 (98%)	6 (2%)	66	62

All (6) residues with a non-rotameric sidechain are listed below:

Mol	Chain	Res	Type
1	A	235	PRO
1	B	212	GLU
1	B	235	PRO
1	C	219	GLN
1	C	235	PRO
1	C	323	ASN

Some sidechains can be flipped to improve hydrogen bonding and reduce clashes. All (10) such sidechains are listed below:

Mol	Chain	Res	Type
1	A	210	GLN
1	A	219	GLN

Continued on next page...

Continued from previous page...

Mol	Chain	Res	Type
1	B	217	GLN
1	B	219	GLN
1	B	220	HIS
1	B	263	GLN
1	C	210	GLN
1	C	215	GLN
1	C	220	HIS
1	C	323	ASN

5.3.3 RNA [i](#)

There are no RNA molecules in this entry.

5.4 Non-standard residues in protein, DNA, RNA chains [i](#)

There are no non-standard protein/DNA/RNA residues in this entry.

5.5 Carbohydrates [i](#)

There are no carbohydrates in this entry.

5.6 Ligand geometry [i](#)

Of 12 ligands modelled in this entry, 9 are monoatomic - leaving 3 for Mogul analysis.

In the following table, the Counts columns list the number of bonds (or angles) for which Mogul statistics could be retrieved, the number of bonds (or angles) that are observed in the model and the number of bonds (or angles) that are defined in the Chemical Component Dictionary. The Link column lists molecule types, if any, to which the group is linked. The Z score for a bond length (or angle) is the number of standard deviations the observed value is removed from the expected value. A bond length (or angle) with $|Z| > 2$ is considered an outlier worth inspection. RMSZ is the root-mean-square of all Z scores of the bond lengths (or angles).

Mol	Type	Chain	Res	Link	Bond lengths			Bond angles		
					Counts	RMSZ	$\# Z > 2$	Counts	RMSZ	$\# Z > 2$
3	NPJ	A	700	2	33,34,34	1.77	7 (21%)	47,49,49	2.22	3 (6%)
3	NPJ	B	700	2	33,34,34	1.66	6 (18%)	47,49,49	2.11	4 (8%)
3	NPJ	C	700	2	33,34,34	1.72	6 (18%)	47,49,49	2.20	4 (8%)

In the following table, the Chirals column lists the number of chiral outliers, the number of chiral

centers analysed, the number of these observed in the model and the number defined in the Chemical Component Dictionary. Similar counts are reported in the Torsion and Rings columns. '-' means no outliers of that kind were identified.

Mol	Type	Chain	Res	Link	Chirals	Torsions	Rings
3	NPJ	A	700	2	-	0/14/56/56	0/3/3/3
3	NPJ	B	700	2	-	0/14/56/56	0/3/3/3
3	NPJ	C	700	2	-	0/14/56/56	0/3/3/3

All (19) bond length outliers are listed below:

Mol	Chain	Res	Type	Atoms	Z	Observed(Å)	Ideal(Å)
3	B	700	NPJ	C1C-N1C	-4.68	1.36	1.45
3	C	700	NPJ	C1C-N1C	-4.54	1.36	1.45
3	A	700	NPJ	C1C-N1C	-4.53	1.36	1.45
3	A	700	NPJ	O5B-C1B	2.02	1.46	1.41
3	B	700	NPJ	O1B-C4C	2.58	1.43	1.38
3	C	700	NPJ	C2C-C1C	2.70	1.44	1.38
3	B	700	NPJ	C2C-C1C	2.73	1.44	1.38
3	A	700	NPJ	C2C-C1C	2.76	1.44	1.38
3	B	700	NPJ	O5A-C1A	2.81	1.48	1.41
3	A	700	NPJ	O5A-C1A	2.85	1.48	1.41
3	C	700	NPJ	O5A-C1A	2.86	1.48	1.41
3	B	700	NPJ	C6C-C1C	2.97	1.44	1.38
3	C	700	NPJ	C6C-C1C	3.01	1.44	1.38
3	A	700	NPJ	C6C-C1C	3.18	1.45	1.38
3	A	700	NPJ	O1B-C4C	3.18	1.44	1.38
3	C	700	NPJ	O1B-C4C	3.28	1.45	1.38
3	B	700	NPJ	O1A-C4B	3.50	1.52	1.43
3	C	700	NPJ	O1A-C4B	3.84	1.53	1.43
3	A	700	NPJ	O1A-C4B	3.98	1.53	1.43

All (11) bond angle outliers are listed below:

Mol	Chain	Res	Type	Atoms	Z	Observed(°)	Ideal(°)
3	B	700	NPJ	C1A-O1A-C4B	-2.28	112.45	118.00
3	C	700	NPJ	C1A-O1A-C4B	-2.04	113.02	118.00
3	B	700	NPJ	C6C-C1C-N1C	2.32	121.18	119.41
3	B	700	NPJ	O1B-C1B-C2B	2.48	110.77	107.11
3	A	700	NPJ	C6C-C1C-N1C	2.54	121.34	119.41
3	C	700	NPJ	C6C-C1C-N1C	2.63	121.41	119.41
3	A	700	NPJ	O1B-C1B-C2B	2.82	111.28	107.11
3	C	700	NPJ	O1B-C1B-C2B	2.82	111.28	107.11
3	B	700	NPJ	C4C-O1B-C1B	12.91	136.69	117.88

Continued on next page...

Continued from previous page...

Mol	Chain	Res	Type	Atoms	Z	Observed($^{\circ}$)	Ideal($^{\circ}$)
3	C	700	NPJ	C4C-O1B-C1B	13.57	137.66	117.88
3	A	700	NPJ	C4C-O1B-C1B	13.81	138.01	117.88

There are no chirality outliers.

There are no torsion outliers.

There are no ring outliers.

1 monomer is involved in 1 short contact:

Mol	Chain	Res	Type	Clashes	Symm-Clashes
3	A	700	NPJ	1	0

5.7 Other polymers [i](#)

There are no such residues in this entry.

5.8 Polymer linkage issues [i](#)

There are no chain breaks in this entry.

6 Fit of model and data

6.1 Protein, DNA and RNA chains

In the following table, the column labelled ‘#RSRZ> 2’ contains the number (and percentage) of RSRZ outliers, followed by percent RSRZ outliers for the chain as percentile scores relative to all X-ray entries and entries of similar resolution. The OWAB column contains the minimum, median, 95th percentile and maximum values of the occupancy-weighted average B-factor per residue. The column labelled ‘Q< 0.9’ lists the number of (and percentage) of residues with an average occupancy less than 0.9.

Mol	Chain	Analysed	<RSRZ>	#RSRZ>2	OWAB(Å ²)	Q<0.9
1	A	151/160 (94%)	-0.02	8 (5%) 27 31	17, 26, 51, 65	0
1	B	151/160 (94%)	0.02	7 (4%) 33 37	17, 24, 50, 65	0
1	C	151/160 (94%)	0.06	11 (7%) 16 18	18, 27, 50, 68	0
All	All	453/480 (94%)	0.02	26 (5%) 24 28	17, 26, 51, 68	0

All (26) RSRZ outliers are listed below:

Mol	Chain	Res	Type	RSRZ
1	B	207	LEU	7.9
1	A	206	SER	6.8
1	A	208	ARG	6.1
1	B	208	ARG	5.8
1	A	209	GLN	5.4
1	C	313	VAL	4.5
1	B	205	ALA	4.1
1	B	210	GLN	3.8
1	C	209	GLN	3.8
1	A	211	VAL	3.7
1	B	211	VAL	3.7
1	C	206	SER	3.5
1	B	209	GLN	3.5
1	A	205	ALA	3.5
1	C	212	GLU	3.3
1	C	214	LEU	3.2
1	C	207	LEU	2.9
1	C	205	ALA	2.8
1	B	206	SER	2.8
1	A	212	GLU	2.6
1	C	208	ARG	2.5
1	C	210	GLN	2.4
1	A	207	LEU	2.4

Continued on next page...

Continued from previous page...

Mol	Chain	Res	Type	RSRZ
1	C	303	LYS	2.2
1	A	215	GLN	2.1
1	C	308	THR	2.0

6.2 Non-standard residues in protein, DNA, RNA chains [i](#)

There are no non-standard protein/DNA/RNA residues in this entry.

6.3 Carbohydrates [i](#)

There are no carbohydrates in this entry.

6.4 Ligands [i](#)

In the following table, the Atoms column lists the number of modelled atoms in the group and the number defined in the chemical component dictionary. LLDF column lists the quality of electron density of the group with respect to its neighbouring residues in protein, DNA or RNA chains. The B-factors column lists the minimum, median, 95th percentile and maximum values of B factors of atoms in the group. The column labelled 'Q < 0.9' lists the number of atoms with occupancy less than 0.9.

Mol	Type	Chain	Res	Atoms	RSCC	RSR	LLDF	B-factors(Å ²)	Q<0.9
3	NPJ	A	700	32/32	0.81	0.13	2.71	31,47,50,52	0
3	NPJ	C	700	32/32	0.87	0.12	2.12	23,34,41,45	0
2	CA	C	401	1/1	0.99	0.11	1.93	20,20,20,20	0
3	NPJ	B	700	32/32	0.85	0.12	1.72	18,33,36,40	0
2	CA	A	401	1/1	0.99	0.08	0.18	21,21,21,21	0
2	CA	B	402	1/1	1.00	0.09	0.16	24,24,24,24	0
2	CA	B	401	1/1	0.99	0.09	-0.62	19,19,19,19	0
2	CA	A	403	1/1	0.96	0.06	-1.43	30,30,30,30	0
2	CA	C	402	1/1	0.99	0.06	-1.87	27,27,27,27	0
2	CA	A	402	1/1	0.99	0.05	-2.71	21,21,21,21	0
2	CA	B	403	1/1	0.97	0.05	-	33,33,33,33	0
2	CA	C	403	1/1	0.96	0.08	-	38,38,38,38	0

6.5 Other polymers [i](#)

There are no such residues in this entry.