



Full wwPDB X-ray Structure Validation Report ⓘ

Oct 10, 2017 – 06:38 AM EDT

PDB ID : 2GIQ
Title : Hepatitis C virus RNA-dependent RNA polymerase NS5B with NNI-2 inhibitor
Authors : Harris, S.F.
Deposited on : unknown
Resolution : 1.65 Å(reported)

This is a Full wwPDB X-ray Structure Validation Report for a publicly released PDB entry.

We welcome your comments at validation@mail.wwpdb.org

A user guide is available at

<http://wwpdb.org/validation/2016/XrayValidationReportHelp>

with specific help available everywhere you see the ⓘ symbol.

The following versions of software and data (see [references ⓘ](#)) were used in the production of this report:

MolProbity : 4.02b-467
Mogul : 1.7.2 (RC1), CSD as538be (2017)
Xtriage (Phenix) : 1.9-1692
EDS : rb-20030345
Percentile statistics : 20161228.v01 (using entries in the PDB archive December 28th 2016)
Refmac : 5.8.0135
CCP4 : 6.5.0
Ideal geometry (proteins) : Engh & Huber (2001)
Ideal geometry (DNA, RNA) : Parkinson et al. (1996)
Validation Pipeline (wwPDB-VP) : rb-20030345

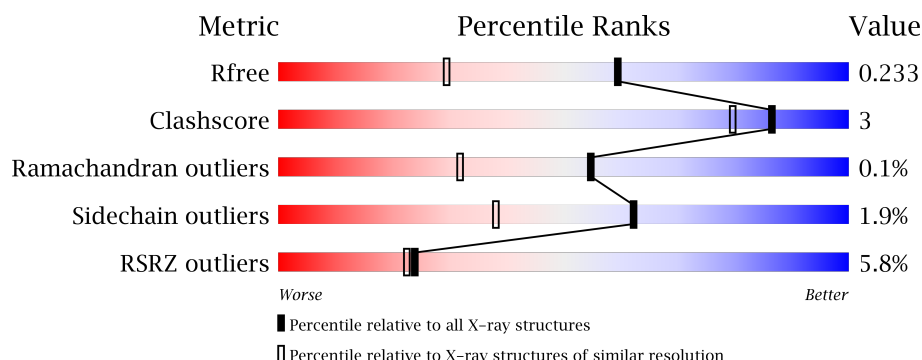
1 Overall quality at a glance

The following experimental techniques were used to determine the structure:

X-RAY DIFFRACTION

The reported resolution of this entry is 1.65 Å.

Percentile scores (ranging between 0-100) for global validation metrics of the entry are shown in the following graphic. The table shows the number of entries on which the scores are based.



Metric	Whole archive (#Entries)	Similar resolution (#Entries, resolution range(Å))
R_{free}	100719	1368 (1.66-1.66)
Clashscore	112137	1468 (1.66-1.66)
Ramachandran outliers	110173	1438 (1.66-1.66)
Sidechain outliers	110143	1438 (1.66-1.66)
RSRZ outliers	101464	1371 (1.66-1.66)

The table below summarises the geometric issues observed across the polymeric chains and their fit to the electron density. The red, orange, yellow and green segments on the lower bar indicate the fraction of residues that contain outliers for ≥ 3 , 2, 1 and 0 types of geometric quality criteria. A grey segment represents the fraction of residues that are not modelled. The numeric value for each fraction is indicated below the corresponding segment, with a dot representing fractions $\leq 5\%$. The upper red bar (where present) indicates the fraction of residues that have poor fit to the electron density. The numeric value is given above the bar.

Mol	Chain	Length	Quality of chain
1	A	568	<div> <div>6%</div> <div> <div></div> <div>92%</div> <div>6%</div> <div>•</div> </div> </div>
1	B	568	<div> <div>5%</div> <div> <div></div> <div>92%</div> <div>5%</div> <div>••</div> </div> </div>

2 Entry composition

There are 3 unique types of molecules in this entry. The entry contains 9364 atoms, of which 0 are hydrogens and 0 are deuteriums.

In the tables below, the ZeroOcc column contains the number of atoms modelled with zero occupancy, the AltConf column contains the number of residues with at least one atom in alternate conformation and the Trace column contains the number of residues modelled with at most 2 atoms.

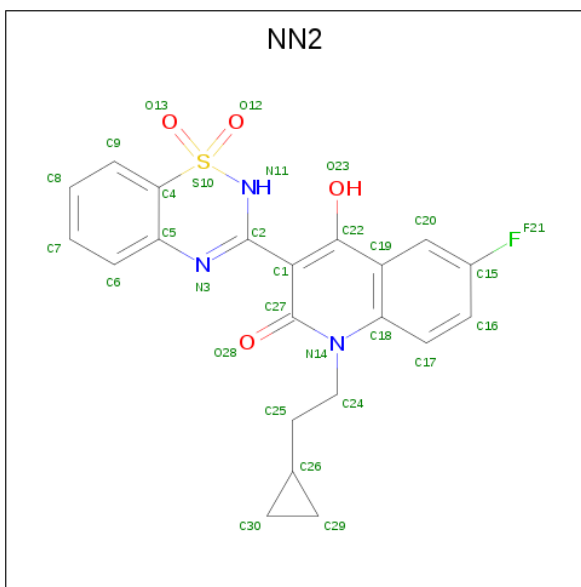
- Molecule 1 is a protein called RNA-directed RNA polymerase.

Mol	Chain	Residues	Atoms					ZeroOcc	AltConf	Trace
1	A	557	Total	C	N	O	S	0	8	0
			4393	2769	776	812	36			
1	B	557	Total	C	N	O	S	0	8	0
			4393	2769	776	812	36			

There are 14 discrepancies between the modelled and reference sequences:

Chain	Residue	Modelled	Actual	Comment	Reference
A	-5	MET	-	CLONING ARTIFACT	UNP P26663
A	-4	HIS	-	EXPRESSION TAG	UNP P26663
A	-3	HIS	-	EXPRESSION TAG	UNP P26663
A	-2	HIS	-	EXPRESSION TAG	UNP P26663
A	-1	HIS	-	EXPRESSION TAG	UNP P26663
A	0	HIS	-	EXPRESSION TAG	UNP P26663
A	1	HIS	-	EXPRESSION TAG	UNP P26663
B	-5	MET	-	CLONING ARTIFACT	UNP P26663
B	-4	HIS	-	EXPRESSION TAG	UNP P26663
B	-3	HIS	-	EXPRESSION TAG	UNP P26663
B	-2	HIS	-	EXPRESSION TAG	UNP P26663
B	-1	HIS	-	EXPRESSION TAG	UNP P26663
B	0	HIS	-	EXPRESSION TAG	UNP P26663
B	1	HIS	-	EXPRESSION TAG	UNP P26663

- Molecule 2 is 1-(2-CYCLOPROPYLETHYL)-3-(1,1-DIOXIDO-2H-1,2,4-BENZOTHIADIAZIN-3-YL)-6-FLUORO-4-HYDROXYQUINOLIN-2(1H)-ONE (three-letter code: NN2) (formula: C₂₁H₁₈FN₃O₄S).



Mol	Chain	Residues	Atoms						ZeroOcc	AltConf
2	A	1	Total	C	F	N	O	S	0	0
			30	21	1	3	4	1		
2	B	1	Total	C	F	N	O	S	0	0
			30	21	1	3	4	1		

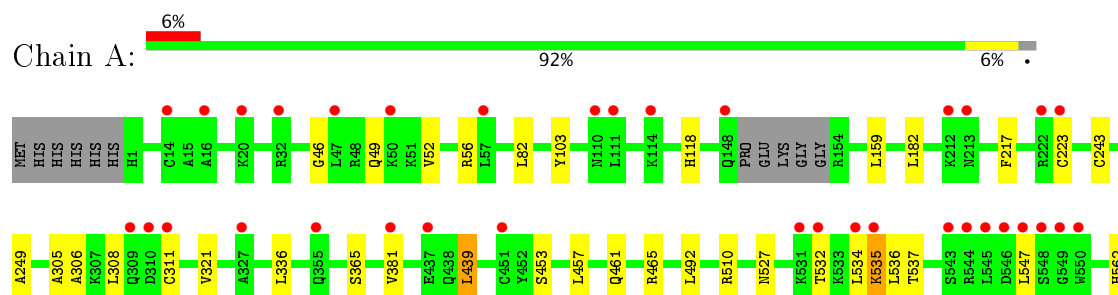
- Molecule 3 is water.

Mol	Chain	Residues	Atoms		ZeroOcc	AltConf
3	A	252	Total	O	0	0
			252	252		
3	B	266	Total	O	0	0
			266	266		

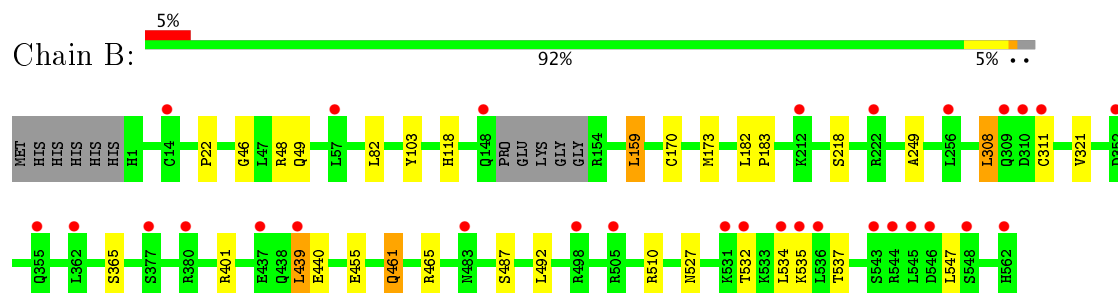
3 Residue-property plots [i](#)

These plots are drawn for all protein, RNA and DNA chains in the entry. The first graphic for a chain summarises the proportions of the various outlier classes displayed in the second graphic. The second graphic shows the sequence view annotated by issues in geometry and electron density. Residues are color-coded according to the number of geometric quality criteria for which they contain at least one outlier: green = 0, yellow = 1, orange = 2 and red = 3 or more. A red dot above a residue indicates a poor fit to the electron density ($\text{RSRZ} > 2$). Stretches of 2 or more consecutive residues without any outlier are shown as a green connector. Residues present in the sample, but not in the model, are shown in grey.

• Molecule 1: RNA-directed RNA polymerase



• Molecule 1: RNA-directed RNA polymerase



4 Data and refinement statistics

Property	Value	Source
Space group	P 21 21 21	Depositor
Cell constants a, b, c, α , β , γ	85.87Å 105.42Å 126.10Å 90.00° 90.00° 90.00°	Depositor
Resolution (Å)	50.00 – 1.65 48.63 – 1.65	Depositor EDS
% Data completeness (in resolution range)	(Not available) (50.00-1.65) 93.8 (48.63-1.65)	Depositor EDS
R_{merge}	0.12	Depositor
R_{sym}	(Not available)	Depositor
$\langle I/\sigma(I) \rangle$ ¹	1.40 (at 1.65Å)	Xtriage
Refinement program	REFMAC	Depositor
R, R_{free}	0.204 , 0.228 0.210 , 0.233	Depositor DCC
R_{free} test set	6497 reflections (5.33%)	DCC
Wilson B-factor (Å ²)	20.0	Xtriage
Anisotropy	0.634	Xtriage
Bulk solvent k_{sol} (e/Å ³), B_{sol} (Å ²)	0.38 , 42.7	EDS
L-test for twinning ²	$\langle L \rangle = 0.48$, $\langle L^2 \rangle = 0.32$	Xtriage
Estimated twinning fraction	No twinning to report.	Xtriage
F_o, F_c correlation	0.95	EDS
Total number of atoms	9364	wwPDB-VP
Average B, all atoms (Å ²)	25.0	wwPDB-VP

Xtriage's analysis on translational NCS is as follows: *The analyses of the Patterson function reveals a significant off-origin peak that is 48.74 % of the origin peak, indicating pseudo translational symmetry. The chance of finding a peak of this or larger height randomly in a structure without pseudo translational symmetry is equal to 8.2388e-05. The detected translational NCS is most likely also responsible for the elevated intensity ratio.*

¹ Intensities estimated from amplitudes.

² Theoretical values of $\langle |L| \rangle$, $\langle L^2 \rangle$ for acentric reflections are 0.5, 0.333 respectively for untwinned datasets, and 0.375, 0.2 for perfectly twinned datasets.

5 Model quality

5.1 Standard geometry

Bond lengths and bond angles in the following residue types are not validated in this section: NN2

The Z score for a bond length (or angle) is the number of standard deviations the observed value is removed from the expected value. A bond length (or angle) with $|Z| > 5$ is considered an outlier worth inspection. RMSZ is the root-mean-square of all Z scores of the bond lengths (or angles).

Mol	Chain	Bond lengths		Bond angles	
		RMSZ	# Z >5	RMSZ	# Z >5
1	A	0.42	0/4488	0.58	0/6088
1	B	0.42	0/4488	0.58	0/6088
All	All	0.42	0/8976	0.58	0/12176

There are no bond length outliers.

There are no bond angle outliers.

There are no chirality outliers.

There are no planarity outliers.

5.2 Too-close contacts

In the following table, the Non-H and H(model) columns list the number of non-hydrogen atoms and hydrogen atoms in the chain respectively. The H(added) column lists the number of hydrogen atoms added and optimized by MolProbity. The Clashes column lists the number of clashes within the asymmetric unit, whereas Symm-Clashes lists symmetry related clashes.

Mol	Chain	Non-H	H(model)	H(added)	Clashes	Symm-Clashes
1	A	4393	0	4405	21	0
1	B	4393	0	4405	23	0
2	A	30	0	17	0	0
2	B	30	0	17	1	0
3	A	252	0	0	2	0
3	B	266	0	0	4	0
All	All	9364	0	8844	45	0

The all-atom clashscore is defined as the number of clashes found per 1000 atoms (including hydrogen atoms). The all-atom clashscore for this structure is 3.

All (45) close contacts within the same asymmetric unit are listed below, sorted by their clash

magnitude.

Atom-1	Atom-2	Interatomic distance (Å)	Clash overlap (Å)
1:B:170:CYS:HA	1:B:173:MET:HE3	1.47	0.96
1:B:527:ASN:HD21	1:B:534:LEU:H	1.23	0.84
1:B:103:TYR:OH	1:B:118:HIS:HD2	1.69	0.76
1:A:103:TYR:OH	1:A:118:HIS:HD2	1.71	0.73
1:A:527:ASN:HD21	1:A:534:LEU:H	1.37	0.72
1:B:465:ARG:HG2	1:B:547:LEU:HD22	1.75	0.67
1:B:170:CYS:HA	1:B:173:MET:CE	2.22	0.67
1:A:82:LEU:HD13	1:A:249:ALA:HB2	1.79	0.64
1:A:465:ARG:HG2	1:A:547:LEU:HD22	1.80	0.63
1:A:306:ALA:HB3	1:A:308:LEU:HD13	1.82	0.60
1:B:103:TYR:OH	1:B:118:HIS:CD2	2.53	0.60
1:A:305:ALA:HB2	3:A:1210:HOH:O	2.05	0.55
1:A:46:GLY:HA2	1:A:49:GLN:HE21	1.72	0.55
1:B:321:VAL:CG2	1:B:365:SER:CB	2.85	0.55
1:A:52:VAL:HG12	1:A:223[B]:CYS:SG	2.47	0.54
1:A:223[B]:CYS:SG	3:A:1101:HOH:O	2.45	0.53
1:A:439:LEU:HB3	1:A:457:LEU:HG	1.92	0.52
1:B:46:GLY:HA2	1:B:49:GLN:HE21	1.75	0.52
1:A:103:TYR:OH	1:A:118:HIS:CD2	2.58	0.51
1:B:82:LEU:HD13	1:B:249:ALA:HB2	1.93	0.51
1:A:308:LEU:HB3	1:A:311:CYS:SG	2.51	0.51
1:B:455:GLU:HB3	3:B:2223:HOH:O	2.12	0.49
1:A:535:LYS:HD3	1:A:537:THR:HG23	1.95	0.49
1:B:308:LEU:HB3	1:B:311:CYS:SG	2.53	0.49
1:B:321:VAL:HG13	3:B:2236:HOH:O	2.11	0.49
1:B:321:VAL:HG22	1:B:365:SER:HB3	1.95	0.48
1:B:439:LEU:O	3:B:2223:HOH:O	2.20	0.48
1:B:218:SER:HB3	3:B:2236:HOH:O	2.13	0.48
1:A:439:LEU:HB3	1:A:457:LEU:CG	2.44	0.47
1:A:535:LYS:CD	1:A:537:THR:HG23	2.44	0.47
1:B:170:CYS:CA	1:B:173:MET:HE3	2.33	0.46
1:A:182:LEU:HD12	1:A:243:CYS:SG	2.56	0.45
1:B:182:LEU:N	1:B:183:PRO:CD	2.80	0.45
1:A:321:VAL:CG2	1:A:365:SER:CB	2.94	0.44
1:B:22:PRO:HG2	1:B:401:ARG:HG3	2.00	0.44
1:B:321:VAL:CG2	1:B:365:SER:HB3	2.48	0.43
1:A:453:SER:H	1:A:562:HIS:HE1	1.66	0.42
1:B:461:GLN:H	1:B:461:GLN:HE21	1.68	0.42
1:B:48:ARG:HG3	1:B:159:LEU:HD22	2.00	0.42
1:B:535:LYS:HD2	1:B:537:THR:HG23	2.02	0.42
1:B:321:VAL:HG21	1:B:365:SER:CB	2.50	0.42

Continued on next page...

Continued from previous page...

Atom-1	Atom-2	Interatomic distance (Å)	Clash overlap (Å)
1:A:321:VAL:CG2	1:A:365:SER:HB3	2.50	0.41
1:A:182:LEU:C	1:A:182:LEU:HD23	2.41	0.41
2:B:2001:NN2:O23	2:B:2001:NN2:N11	2.49	0.40
1:A:217:PHE:CD2	1:A:336:LEU:HD21	2.57	0.40

There are no symmetry-related clashes.

5.3 Torsion angles [i](#)

5.3.1 Protein backbone [i](#)

In the following table, the Percentiles column shows the percent Ramachandran outliers of the chain as a percentile score with respect to all X-ray entries followed by that with respect to entries of similar resolution.

The Analysed column shows the number of residues for which the backbone conformation was analysed, and the total number of residues.

Mol	Chain	Analysed	Favoured	Allowed	Outliers	Percentiles	
1	A	561/568 (99%)	552 (98%)	8 (1%)	1 (0%)	51	28
1	B	561/568 (99%)	552 (98%)	9 (2%)	0	100	100
All	All	1122/1136 (99%)	1104 (98%)	17 (2%)	1 (0%)	55	32

All (1) Ramachandran outliers are listed below:

Mol	Chain	Res	Type
1	A	536	LEU

5.3.2 Protein sidechains [i](#)

In the following table, the Percentiles column shows the percent sidechain outliers of the chain as a percentile score with respect to all X-ray entries followed by that with respect to entries of similar resolution.

The Analysed column shows the number of residues for which the sidechain conformation was analysed, and the total number of residues.

Mol	Chain	Analysed	Rotameric	Outliers	Percentiles	
1	A	483/484 (100%)	474 (98%)	9 (2%)	62	38

Continued on next page...

Continued from previous page...

Mol	Chain	Analysed	Rotameric	Outliers	Percentiles	
1	B	483/484 (100%)	474 (98%)	9 (2%)	62	38
All	All	966/968 (100%)	948 (98%)	18 (2%)	62	38

All (18) residues with a non-rotameric sidechain are listed below:

Mol	Chain	Res	Type
1	A	56	ARG
1	A	159	LEU
1	A	381	VAL
1	A	439	LEU
1	A	461	GLN
1	A	492	LEU
1	A	510	ARG
1	A	532	THR
1	A	535	LYS
1	B	159	LEU
1	B	308	LEU
1	B	439	LEU
1	B	440	GLU
1	B	461	GLN
1	B	487	SER
1	B	492	LEU
1	B	510	ARG
1	B	532	THR

Some sidechains can be flipped to improve hydrogen bonding and reduce clashes. All (11) such sidechains are listed below:

Mol	Chain	Res	Type
1	A	49	GLN
1	A	118	HIS
1	A	273	ASN
1	A	461	GLN
1	A	527	ASN
1	A	562	HIS
1	B	49	GLN
1	B	118	HIS
1	B	273	ASN
1	B	461	GLN
1	B	527	ASN

5.3.3 RNA ⓘ

There are no RNA molecules in this entry.

5.4 Non-standard residues in protein, DNA, RNA chains ⓘ

There are no non-standard protein/DNA/RNA residues in this entry.

5.5 Carbohydrates ⓘ

There are no carbohydrates in this entry.

5.6 Ligand geometry ⓘ

2 ligands are modelled in this entry.

In the following table, the Counts columns list the number of bonds (or angles) for which Mogul statistics could be retrieved, the number of bonds (or angles) that are observed in the model and the number of bonds (or angles) that are defined in the Chemical Component Dictionary. The Link column lists molecule types, if any, to which the group is linked. The Z score for a bond length (or angle) is the number of standard deviations the observed value is removed from the expected value. A bond length (or angle) with $|Z| > 2$ is considered an outlier worth inspection. RMSZ is the root-mean-square of all Z scores of the bond lengths (or angles).

Mol	Type	Chain	Res	Link	Bond lengths			Bond angles		
					Counts	RMSZ	# $ Z > 2$	Counts	RMSZ	# $ Z > 2$
2	NN2	A	1001	-	30,34,34	3.24	4 (13%)	34,52,52	2.51	9 (26%)
2	NN2	B	2001	-	30,34,34	3.26	4 (13%)	34,52,52	2.53	9 (26%)

In the following table, the Chirals column lists the number of chiral outliers, the number of chiral centers analysed, the number of these observed in the model and the number defined in the Chemical Component Dictionary. Similar counts are reported in the Torsion and Rings columns. '-' means no outliers of that kind were identified.

Mol	Type	Chain	Res	Link	Chirals	Torsions	Rings
2	NN2	A	1001	-	-	0/9/26/26	0/3/5/5
2	NN2	B	2001	-	-	0/9/26/26	0/3/5/5

All (8) bond length outliers are listed below:

Mol	Chain	Res	Type	Atoms	Z	Observed(Å)	Ideal(Å)
2	B	2001	NN2	C4-S10	-16.61	1.61	1.75

Continued on next page...

Continued from previous page...

Mol	Chain	Res	Type	Atoms	Z	Observed(Å)	Ideal(Å)
2	A	1001	NN2	C4-S10	-16.32	1.61	1.75
2	A	1001	NN2	C5-N3	-2.94	1.33	1.39
2	B	2001	NN2	C5-N3	-2.66	1.34	1.39
2	A	1001	NN2	C5-C4	-2.42	1.39	1.40
2	B	2001	NN2	C27-N14	2.05	1.41	1.38
2	A	1001	NN2	C27-N14	2.37	1.41	1.38
2	B	2001	NN2	C18-N14	2.38	1.43	1.40

All (18) bond angle outliers are listed below:

Mol	Chain	Res	Type	Atoms	Z	Observed(°)	Ideal(°)
2	B	2001	NN2	O12-S10-O13	-9.21	110.13	118.63
2	A	1001	NN2	O12-S10-O13	-8.62	110.68	118.63
2	B	2001	NN2	O13-S10-N11	-3.61	105.63	108.19
2	B	2001	NN2	C16-C15-C20	-3.33	119.45	123.22
2	A	1001	NN2	C1-C2-N3	-3.29	115.76	118.77
2	A	1001	NN2	C16-C15-C20	-3.15	119.65	123.22
2	A	1001	NN2	O13-S10-N11	-2.76	106.23	108.19
2	A	1001	NN2	C20-C19-C22	-2.34	117.68	121.45
2	B	2001	NN2	C20-C19-C22	-2.10	118.08	121.45
2	B	2001	NN2	C1-C27-N14	2.18	119.90	116.53
2	B	2001	NN2	C20-C19-C18	2.69	122.21	118.42
2	A	1001	NN2	C20-C19-C18	2.72	122.26	118.42
2	A	1001	NN2	C24-N14-C18	2.95	121.77	119.02
2	B	2001	NN2	C24-N14-C18	3.51	122.29	119.02
2	A	1001	NN2	C5-N3-C2	4.93	124.58	117.28
2	B	2001	NN2	C5-N3-C2	5.06	124.78	117.28
2	B	2001	NN2	O12-S10-N11	5.60	112.17	108.19
2	A	1001	NN2	O12-S10-N11	5.85	112.34	108.19

There are no chirality outliers.

There are no torsion outliers.

There are no ring outliers.

1 monomer is involved in 1 short contact:

Mol	Chain	Res	Type	Clashes	Symm-Clashes
2	B	2001	NN2	1	0

5.7 Other polymers

There are no such residues in this entry.

5.8 Polymer linkage issues

There are no chain breaks in this entry.

6 Fit of model and data ⓘ

6.1 Protein, DNA and RNA chains ⓘ

In the following table, the column labelled ‘#RSRZ> 2’ contains the number (and percentage) of RSRZ outliers, followed by percent RSRZ outliers for the chain as percentile scores relative to all X-ray entries and entries of similar resolution. The OWAB column contains the minimum, median, 95th percentile and maximum values of the occupancy-weighted average B-factor per residue. The column labelled ‘Q< 0.9’ lists the number of (and percentage) of residues with an average occupancy less than 0.9.

Mol	Chain	Analysed	<RSRZ>	#RSRZ>2		OWAB(Å ²)	Q<0.9
1	A	557/568 (98%)	0.53	35 (6%)	21 19	18, 24, 36, 52	0
1	B	557/568 (98%)	0.45	30 (5%)	26 25	17, 24, 36, 45	0
All	All	1114/1136 (98%)	0.49	65 (5%)	24 22	17, 24, 36, 52	0

All (65) RSRZ outliers are listed below:

Mol	Chain	Res	Type	RSRZ
1	A	548	SER	8.3
1	A	543	SER	7.0
1	B	534	LEU	7.0
1	B	548	SER	6.1
1	A	545	LEU	6.0
1	B	532	THR	5.1
1	A	534	LEU	4.9
1	A	535	LYS	4.7
1	B	535	LYS	4.4
1	A	531	LYS	4.4
1	B	544	ARG	4.2
1	A	544	ARG	4.2
1	A	212	LYS	4.1
1	A	14	CYS	4.0
1	A	47	LEU	3.9
1	B	543	SER	3.9
1	A	213	ASN	3.7
1	B	439	LEU	3.7
1	A	550	TRP	3.6
1	B	311	CYS	3.5
1	B	222	ARG	3.5
1	A	355	GLN	3.4
1	A	549	GLY	3.3
1	B	531	LYS	3.2

Continued on next page...

Continued from previous page...

Mol	Chain	Res	Type	RSRZ
1	A	546	ASP	3.2
1	B	562	HIS	3.2
1	A	327	ALA	3.1
1	B	57	LEU	3.0
1	B	212	LYS	3.0
1	A	16	ALA	3.0
1	A	311	CYS	2.8
1	B	437	GLU	2.8
1	A	20	LYS	2.8
1	A	309	GLN	2.8
1	A	222	ARG	2.7
1	A	148	GLN	2.6
1	A	110	ASN	2.6
1	B	546	ASP	2.6
1	B	309	GLN	2.5
1	A	532	THR	2.5
1	A	310	ASP	2.5
1	B	536	LEU	2.4
1	B	380	ARG	2.4
1	A	437	GLU	2.4
1	A	57	LEU	2.3
1	B	14	CYS	2.3
1	B	355	GLN	2.3
1	B	505	ARG	2.2
1	B	483	ASN	2.2
1	A	381	VAL	2.2
1	A	111	LEU	2.1
1	B	310	ASP	2.1
1	A	223[A]	CYS	2.1
1	A	451[A]	CYS	2.1
1	B	377	SER	2.1
1	B	352	ASP	2.1
1	A	547	LEU	2.1
1	B	545	LEU	2.1
1	B	256	LEU	2.1
1	B	362	LEU	2.1
1	A	32	ARG	2.0
1	B	148	GLN	2.0
1	B	498	ARG	2.0
1	A	50	LYS	2.0
1	A	114	LYS	2.0

6.2 Non-standard residues in protein, DNA, RNA chains [i](#)

There are no non-standard protein/DNA/RNA residues in this entry.

6.3 Carbohydrates [i](#)

There are no carbohydrates in this entry.

6.4 Ligands [i](#)

In the following table, the Atoms column lists the number of modelled atoms in the group and the number defined in the chemical component dictionary. LLDF column lists the quality of electron density of the group with respect to its neighbouring residues in protein, DNA or RNA chains. The B-factors column lists the minimum, median, 95th percentile and maximum values of B factors of atoms in the group. The column labelled 'Q< 0.9' lists the number of atoms with occupancy less than 0.9.

Mol	Type	Chain	Res	Atoms	RSCC	RSR	LLDF	B-factors(\AA^2)	Q<0.9
2	NN2	A	1001	30/30	0.93	0.12	0.67	25,26,27,29	0
2	NN2	B	2001	30/30	0.92	0.12	0.38	22,24,26,27	0

6.5 Other polymers [i](#)

There are no such residues in this entry.