



Full wwPDB X-ray Structure Validation Report ⓘ

Oct 30, 2017 – 09:17 PM EDT

PDB ID : 3GMM
Title : Structure of mouse CD1d in complex with C8Ph
Authors : Schiefner, A.; Wilson, I.A.
Deposited on : unknown
Resolution : 1.80 Å(reported)

This is a Full wwPDB X-ray Structure Validation Report for a publicly released PDB entry.

We welcome your comments at validation@mail.wwpdb.org

A user guide is available at

<http://wwpdb.org/validation/2016/XrayValidationReportHelp>

with specific help available everywhere you see the ⓘ symbol.

The following versions of software and data (see [references ⓘ](#)) were used in the production of this report:

MolProbity : 4.02b-467
Mogul : 1.7.2 (RC1), CSD as538be (2017)
Xtriage (Phenix) : 1.9-1692
EDS : rb-20030345
Percentile statistics : 20161228.v01 (using entries in the PDB archive December 28th 2016)
Refmac : 5.8.0135
CCP4 : 6.5.0
Ideal geometry (proteins) : Engh & Huber (2001)
Ideal geometry (DNA, RNA) : Parkinson et al. (1996)
Validation Pipeline (wwPDB-VP) : rb-20030345

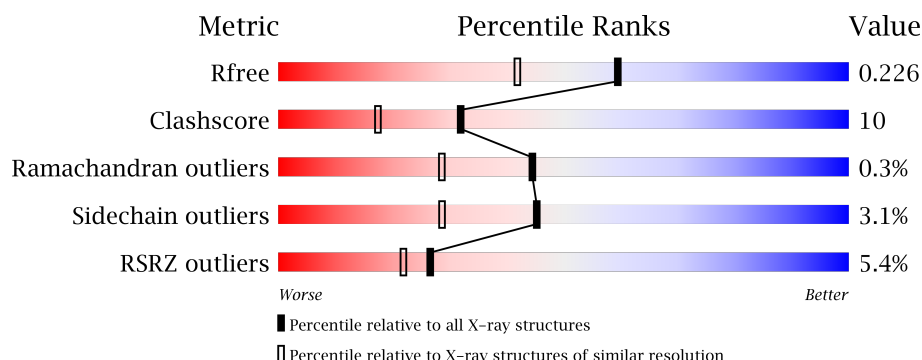
1 Overall quality at a glance

The following experimental techniques were used to determine the structure:

X-RAY DIFFRACTION

The reported resolution of this entry is 1.80 Å.

Percentile scores (ranging between 0-100) for global validation metrics of the entry are shown in the following graphic. The table shows the number of entries on which the scores are based.



Metric	Whole archive (#Entries)	Similar resolution (#Entries, resolution range(Å))
R_{free}	100719	4827 (1.80-1.80)
Clashscore	112137	5742 (1.80-1.80)
Ramachandran outliers	110173	5676 (1.80-1.80)
Sidechain outliers	110143	5675 (1.80-1.80)
RSRZ outliers	101464	4906 (1.80-1.80)

The table below summarises the geometric issues observed across the polymeric chains and their fit to the electron density. The red, orange, yellow and green segments on the lower bar indicate the fraction of residues that contain outliers for ≥ 3 , 2, 1 and 0 types of geometric quality criteria. A grey segment represents the fraction of residues that are not modelled. The numeric value for each fraction is indicated below the corresponding segment, with a dot representing fractions $\leq 5\%$. The upper red bar (where present) indicates the fraction of residues that have poor fit to the electron density. The numeric value is given above the bar.

Mol	Chain	Length	Quality of chain
1	A	287	<div> <div>7%</div> <div> <div></div> <div>74%</div> <div>17%</div> <div>• 7%</div> </div> </div>
2	B	99	<div> <div>%</div> <div> <div></div> <div>83%</div> <div>17%</div> </div> </div>

The following table lists non-polymeric compounds, carbohydrate monomers and non-standard residues in protein, DNA, RNA chains that are outliers for geometric or electron-density-fit criteria:

Mol	Type	Chain	Res	Chirality	Geometry	Clashes	Electron density
5	MAN	A	292	-	-	-	X
8	PLM	A	301	-	-	-	X

2 Entry composition

There are 10 unique types of molecules in this entry. The entry contains 3590 atoms, of which 0 are hydrogens and 0 are deuteriums.

In the tables below, the ZeroOcc column contains the number of atoms modelled with zero occupancy, the AltConf column contains the number of residues with at least one atom in alternate conformation and the Trace column contains the number of residues modelled with at most 2 atoms.

- Molecule 1 is a protein called T-cell surface glycoprotein CD1d1.

Mol	Chain	Residues	Atoms					ZeroOcc	AltConf	Trace
			Total	C	N	O	S			
1	A	268	2205	1401	383	408	13	0	5	0

There are 9 discrepancies between the modelled and reference sequences:

Chain	Residue	Modelled	Actual	Comment	Reference
A	201	HIS	ASP	SEE REMARK 999	UNP P11609
A	280	GLY	-	EXPRESSION TAG	UNP P11609
A	281	SER	-	EXPRESSION TAG	UNP P11609
A	282	HIS	-	EXPRESSION TAG	UNP P11609
A	283	HIS	-	EXPRESSION TAG	UNP P11609
A	284	HIS	-	EXPRESSION TAG	UNP P11609
A	285	HIS	-	EXPRESSION TAG	UNP P11609
A	286	HIS	-	EXPRESSION TAG	UNP P11609
A	287	HIS	-	EXPRESSION TAG	UNP P11609

- Molecule 2 is a protein called Beta-2 microglobulin.

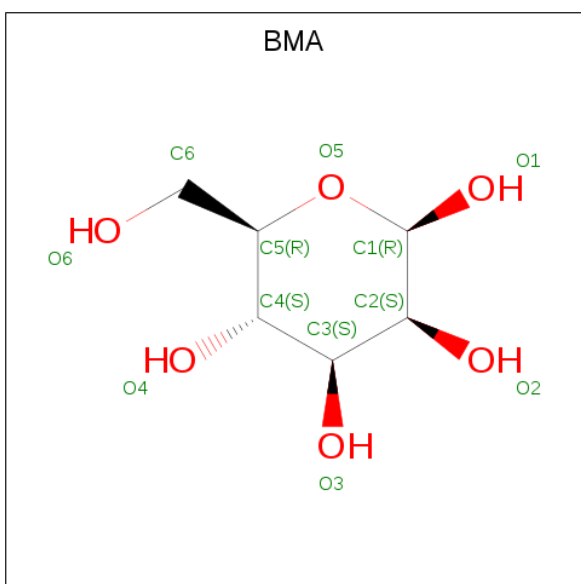
Mol	Chain	Residues	Atoms					ZeroOcc	AltConf	Trace
			Total	C	N	O	S			
2	B	99	833	531	140	155	7	0	2	0

- Molecule 3 is N-ACETYL-D-GLUCOSAMINE (three-letter code: NAG) (formula: C₈H₁₅NO₆).



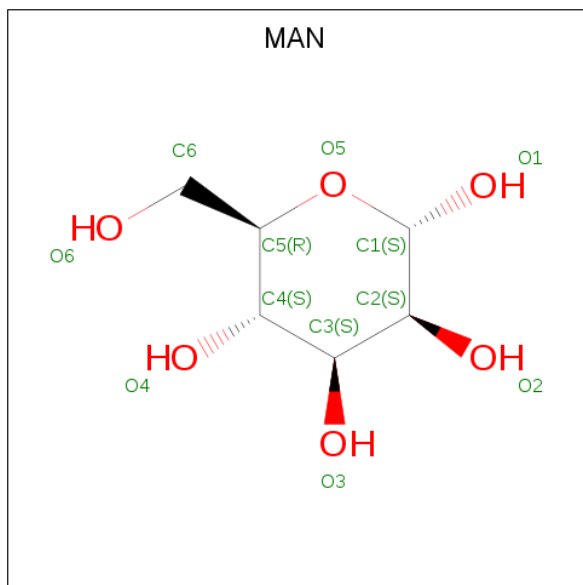
Mol	Chain	Residues	Atoms				ZeroOcc	AltConf
3	A	1	Total	C	N	O	0	0
			14	8	1	5		
3	A	1	Total	C	N	O	0	0
			14	8	1	5		
3	A	1	Total	C	N	O	0	0
			14	8	1	5		
3	A	1	Total	C	N	O	0	0
			14	8	1	5		
3	A	1	Total	C	N	O	0	0
			14	8	1	5		

- Molecule 4 is BETA-D-MANNOSE (three-letter code: BMA) (formula: $C_6H_{12}O_6$).



Mol	Chain	Residues	Atoms			ZeroOcc	AltConf
4	A	1	Total	C	O	0	0
			11	6	5		
4	A	1	Total	C	O	0	0
			11	6	5		

- Molecule 5 is ALPHA-D-MANNOSE (three-letter code: MAN) (formula: $C_6H_{12}O_6$).



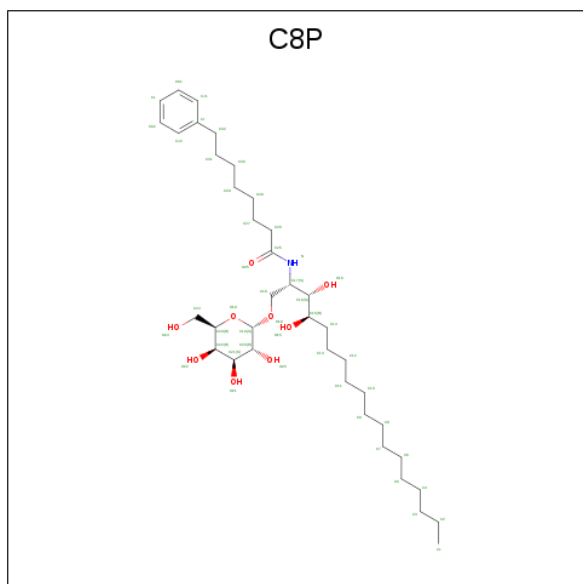
Mol	Chain	Residues	Atoms			ZeroOcc	AltConf
5	A	1	Total	C	O	0	0
			11	6	5		
5	A	1	Total	C	O	0	0
			11	6	5		
5	A	1	Total	C	O	0	0
			11	6	5		
5	A	1	Total	C	O	0	0
			11	6	5		

- Molecule 6 is ALPHA-L-FUCOSE (three-letter code: FUC) (formula: $C_6H_{12}O_5$).



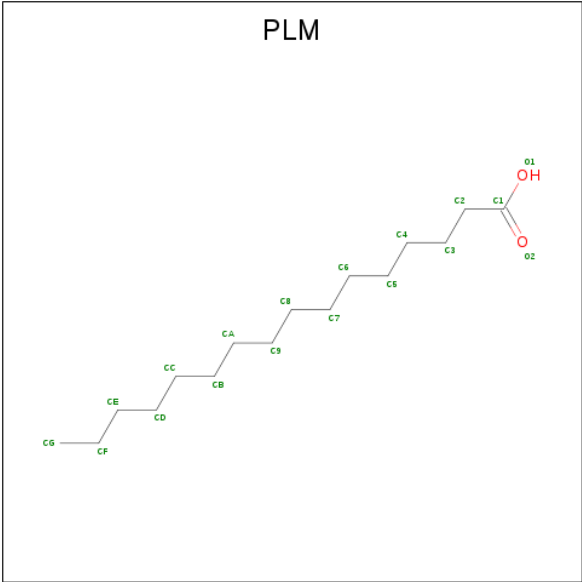
Mol	Chain	Residues	Atoms			ZeroOcc	AltConf
6	A	1	Total	C	O	0	0
			10	6	4		

- Molecule 7 is N-{(1S,2S,3R)-1-[(alpha-D-galactopyranosyloxy)methyl]-2,3-dihydroxyheptadecyl}-8-phenyloctanamide (three-letter code: C8P) (formula: $C_{38}H_{67}NO_9$).



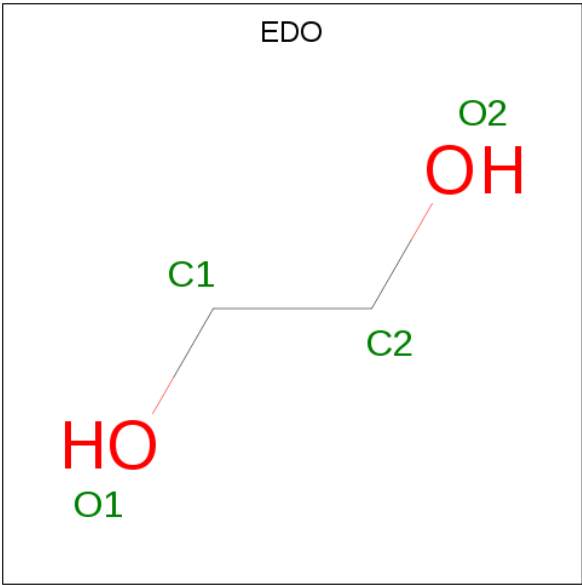
Mol	Chain	Residues	Atoms				ZeroOcc	AltConf
7	A	1	Total	C	N	O	0	0
			48	38	1	9		

- Molecule 8 is PALMITIC ACID (three-letter code: PLM) (formula: $C_{16}H_{32}O_2$).



Mol	Chain	Residues	Atoms			ZeroOcc	AltConf
8	A	1	Total	C	O	0	0
			18	16	2		

- Molecule 9 is 1,2-ETHANEDIOL (three-letter code: EDO) (formula: C₂H₆O₂).



Mol	Chain	Residues	Atoms			ZeroOcc	AltConf
9	A	1	Total	C	O	0	0
			4	2	2		
9	A	1	Total	C	O	0	0
			4	2	2		
9	B	1	Total	C	O	0	0
			4	2	2		

Continued on next page...

Continued from previous page...

Mol	Chain	Residues	Atoms			ZeroOcc	AltConf
9	B	1	Total	C	O	0	1
			8	4	4		

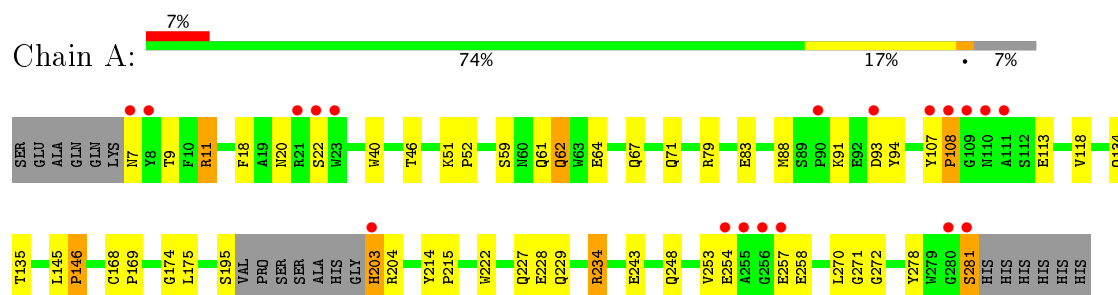
- Molecule 10 is water.

Mol	Chain	Residues	Atoms		ZeroOcc	AltConf
10	A	218	Total	O	0	5
			223	223		
10	B	96	Total	O	0	1
			97	97		

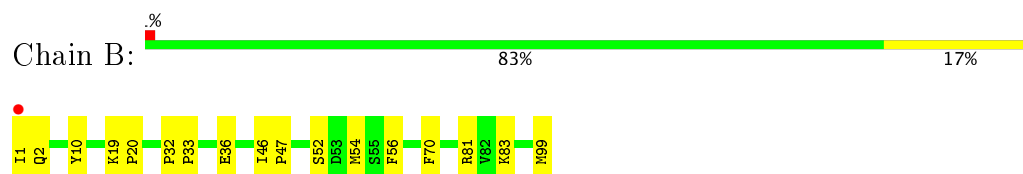
3 Residue-property plots [i](#)

These plots are drawn for all protein, RNA and DNA chains in the entry. The first graphic for a chain summarises the proportions of the various outlier classes displayed in the second graphic. The second graphic shows the sequence view annotated by issues in geometry and electron density. Residues are color-coded according to the number of geometric quality criteria for which they contain at least one outlier: green = 0, yellow = 1, orange = 2 and red = 3 or more. A red dot above a residue indicates a poor fit to the electron density ($RSRZ > 2$). Stretches of 2 or more consecutive residues without any outlier are shown as a green connector. Residues present in the sample, but not in the model, are shown in grey.

- Molecule 1: T-cell surface glycoprotein CD1d1



- Molecule 2: Beta-2 microglobulin



4 Data and refinement statistics

Property	Value	Source
Space group	P 1 21 1	Depositor
Cell constants a, b, c, α , β , γ	41.74Å 97.90Å 55.42Å 90.00° 106.57° 90.00°	Depositor
Resolution (Å)	29.77 – 1.80 29.77 – 1.80	Depositor EDS
% Data completeness (in resolution range)	99.5 (29.77-1.80) 99.6 (29.77-1.80)	Depositor EDS
R_{merge}	(Not available)	Depositor
R_{sym}	0.04	Depositor
$\langle I/\sigma(I) \rangle$ ¹	2.31 (at 1.80Å)	Xtriage
Refinement program	REFMAC 5.5.0066	Depositor
R, R_{free}	0.175 , 0.219 0.181 , 0.226	Depositor DCC
R_{free} test set	1993 reflections (5.34%)	DCC
Wilson B-factor (Å ²)	27.6	Xtriage
Anisotropy	0.020	Xtriage
Bulk solvent k_{sol} (e/Å ³), B_{sol} (Å ²)	0.35 , 53.7	EDS
L-test for twinning ²	$\langle L \rangle = 0.48$, $\langle L^2 \rangle = 0.31$	Xtriage
Estimated twinning fraction	No twinning to report.	Xtriage
F_o, F_c correlation	0.97	EDS
Total number of atoms	3590	wwPDB-VP
Average B, all atoms (Å ²)	25.0	wwPDB-VP

Xtriage's analysis on translational NCS is as follows: *The largest off-origin peak in the Patterson function is 5.94% of the height of the origin peak. No significant pseudotranslation is detected.*

¹Intensities estimated from amplitudes.

²Theoretical values of $\langle |L| \rangle$, $\langle L^2 \rangle$ for acentric reflections are 0.5, 0.333 respectively for untwinned datasets, and 0.375, 0.2 for perfectly twinned datasets.

5 Model quality

5.1 Standard geometry

Bond lengths and bond angles in the following residue types are not validated in this section: C8P, BMA, NAG, EDO, FUC, PLM, MAN

The Z score for a bond length (or angle) is the number of standard deviations the observed value is removed from the expected value. A bond length (or angle) with $|Z| > 5$ is considered an outlier worth inspection. RMSZ is the root-mean-square of all Z scores of the bond lengths (or angles).

Mol	Chain	Bond lengths		Bond angles	
		RMSZ	$\# Z > 5$	RMSZ	$\# Z > 5$
1	A	1.09	2/2268 (0.1%)	0.98	2/3079 (0.1%)
2	B	1.22	3/859 (0.3%)	1.03	0/1164
All	All	1.13	5/3127 (0.2%)	0.99	2/4243 (0.0%)

All (5) bond length outliers are listed below:

Mol	Chain	Res	Type	Atoms	Z	Observed(Å)	Ideal(Å)
2	B	54	MET	CG-SD	-7.23	1.62	1.81
2	B	10	TYR	CD1-CE1	5.79	1.48	1.39
2	B	56	PHE	CE2-CZ	5.34	1.47	1.37
1	A	40	TRP	CE3-CZ3	5.20	1.47	1.38
1	A	222	TRP	CB-CG	5.03	1.59	1.50

All (2) bond angle outliers are listed below:

Mol	Chain	Res	Type	Atoms	Z	Observed(°)	Ideal(°)
1	A	271	GLY	N-CA-C	-5.29	99.89	113.10
1	A	175	LEU	CB-CG-CD2	5.18	119.81	111.00

There are no chirality outliers.

There are no planarity outliers.

5.2 Too-close contacts

In the following table, the Non-H and H(model) columns list the number of non-hydrogen atoms and hydrogen atoms in the chain respectively. The H(added) column lists the number of hydrogen atoms added and optimized by MolProbity. The Clashes column lists the number of clashes within the asymmetric unit, whereas Symm-Clashes lists symmetry related clashes.

Mol	Chain	Non-H	H(model)	H(added)	Clashes	Symm-Clashes
1	A	2205	0	2097	48	0
2	B	833	0	806	14	1
3	A	70	0	60	3	0
4	A	22	0	17	0	0
5	A	44	0	39	1	0
6	A	10	0	10	0	0
7	A	48	0	67	2	0
8	A	18	0	31	2	0
9	A	8	0	12	1	0
9	B	12	0	18	2	0
10	A	223	0	0	12	0
10	B	97	0	0	6	1
All	All	3590	0	3157	65	1

The all-atom clashscore is defined as the number of clashes found per 1000 atoms (including hydrogen atoms). The all-atom clashscore for this structure is 10.

All (65) close contacts within the same asymmetric unit are listed below, sorted by their clash magnitude.

Atom-1	Atom-2	Interatomic distance (Å)	Clash overlap (Å)
1:A:234:ARG:HH11	1:A:234:ARG:HG2	1.14	1.08
1:A:107:TYR:HB3	1:A:108:PRO:HD2	1.26	1.08
1:A:59:SER:OG	1:A:62:GLN:HG3	1.69	0.91
1:A:107:TYR:HB3	1:A:108:PRO:CD	2.00	0.91
1:A:228:GLU:HG3	10:A:397:HOH:O	1.73	0.86
1:A:248:GLN:OE1	2:B:99:MET:HG2	1.81	0.81
1:A:234:ARG:NH1	1:A:234:ARG:HG2	1.93	0.81
1:A:234:ARG:HD2	10:A:459:HOH:O	1.81	0.81
1:A:11[A]:ARG:HD2	10:A:408:HOH:O	1.81	0.79
1:A:272:GLY:O	10:A:367:HOH:O	2.09	0.69
2:B:36[B]:GLU:HG3	10:B:303:HOH:O	1.95	0.67
1:A:107:TYR:CB	1:A:108:PRO:HD2	2.01	0.66
1:A:168:CYS:HB3	1:A:169:PRO:HD3	1.79	0.64
2:B:19:LYS:HE3	10:B:138:HOH:O	1.99	0.62
1:A:248:GLN:HG3	9:A:303:EDO:H21	1.83	0.61
1:A:257:GLU:HG3	1:A:257:GLU:O	2.01	0.59
1:A:46:THR:HB	1:A:67:GLN:OE1	2.02	0.58
2:B:2:GLN:HG2	10:B:268:HOH:O	2.03	0.58
1:A:234:ARG:CD	10:A:459:HOH:O	2.43	0.58
1:A:248:GLN:OE1	2:B:99:MET:CG	2.51	0.57
1:A:18:PHE:HB3	1:A:94:TYR:CE2	2.39	0.57
1:A:257:GLU:CG	1:A:257:GLU:O	2.51	0.56

Continued on next page...

Continued from previous page...

Atom-1	Atom-2	Interatomic distance (Å)	Clash overlap (Å)
1:A:227[B]:GLN:HG2	1:A:229:GLN:NE2	2.19	0.56
1:A:83:GLU:OE1	10:A:369:HOH:O	2.18	0.56
1:A:195:SER:OG	1:A:204:ARG:NH1	2.41	0.54
2:B:1:ILE:HG13	2:B:2:GLN:N	2.24	0.52
3:A:294:NAG:C7	10:A:330:HOH:O	2.57	0.52
7:A:300:C8P:H31A	8:A:301:PLM:HF1	1.92	0.51
1:A:7:ASN:HD21	1:A:107:TYR:HD1	1.57	0.50
1:A:88:MET:O	1:A:91:LYS:HB2	2.12	0.50
1:A:7:ASN:ND2	1:A:107:TYR:HD1	2.10	0.49
1:A:107:TYR:CB	1:A:108:PRO:CD	2.70	0.48
2:B:32:PRO:HB2	2:B:33:PRO:HD2	1.93	0.48
1:A:168:CYS:HB3	1:A:169:PRO:CD	2.43	0.48
2:B:52:SER:OG	9:B:101[A]:EDO:H21	2.13	0.48
1:A:254:GLU:N	1:A:257:GLU:OE1	2.38	0.47
5:A:292:MAN:C1	5:A:293:MAN:H5	2.43	0.47
1:A:20:ASN:HA	1:A:94:TYR:CD1	2.49	0.47
1:A:18:PHE:HB3	1:A:94:TYR:HE2	1.80	0.47
1:A:174:GLY:HA3	10:A:313:HOH:O	2.14	0.46
1:A:234:ARG:HH11	1:A:234:ARG:CG	2.04	0.46
1:A:134[B]:GLN:HG2	1:A:135:THR:O	2.16	0.46
2:B:83:LYS:HG3	10:B:120:HOH:O	2.16	0.45
1:A:214:TYR:CG	1:A:215:PRO:HA	2.52	0.44
1:A:278:TYR:O	1:A:281:SER:HB2	2.18	0.44
2:B:52:SER:CB	9:B:101[A]:EDO:H21	2.48	0.44
1:A:79:ARG:O	1:A:83:GLU:HG2	2.17	0.44
2:B:81:ARG:NH1	10:B:145:HOH:O	2.30	0.43
2:B:19:LYS:HA	2:B:20:PRO:HD3	1.93	0.43
3:A:290:NAG:H81	10:A:482:HOH:O	2.19	0.42
1:A:270:LEU:HD23	1:A:270:LEU:HA	1.76	0.42
1:A:203:HIS:C	1:A:203:HIS:CD2	2.92	0.42
1:A:9:THR:HG22	1:A:11[A]:ARG:HG3	2.02	0.42
1:A:64:GLU:HG2	10:A:500:HOH:O	2.19	0.42
1:A:22:SER:HB2	3:A:288:NAG:H82	2.01	0.41
2:B:46:ILE:HA	2:B:47:PRO:HD2	1.86	0.41
1:A:118:VAL:HG11	7:A:300:C8P:H5A	2.02	0.41
1:A:243:GLU:HG3	10:A:476[B]:HOH:O	2.21	0.41
8:A:301:PLM:H72	8:A:301:PLM:H42	1.76	0.41
1:A:71:GLN:HG2	10:A:517:HOH:O	2.19	0.41
1:A:7:ASN:ND2	1:A:107:TYR:CD1	2.89	0.41
1:A:145:LEU:HB3	1:A:146:PRO:HD3	2.03	0.41
2:B:2:GLN:NE2	10:B:268:HOH:O	2.23	0.41

Continued on next page...

Continued from previous page...

Atom-1	Atom-2	Interatomic distance (Å)	Clash overlap (Å)
1:A:51:LYS:HB3	1:A:52:PRO:HD2	2.03	0.41
1:A:253:VAL:HG21	1:A:258:GLU:HG2	2.03	0.40

All (1) symmetry-related close contacts are listed below. The label for Atom-2 includes the symmetry operator and encoded unit-cell translations to be applied.

Atom-1	Atom-2	Interatomic distance (Å)	Clash overlap (Å)
2:B:1:ILE:CD1	10:B:392:HOH:O[1_655]	1.33	0.87

5.3 Torsion angles [i](#)

5.3.1 Protein backbone [i](#)

In the following table, the Percentiles column shows the percent Ramachandran outliers of the chain as a percentile score with respect to all X-ray entries followed by that with respect to entries of similar resolution.

The Analysed column shows the number of residues for which the backbone conformation was analysed, and the total number of residues.

Mol	Chain	Analysed	Favoured	Allowed	Outliers	Percentiles	
1	A	269/287 (94%)	262 (97%)	6 (2%)	1 (0%)	38	23
2	B	99/99 (100%)	96 (97%)	3 (3%)	0	100	100
All	All	368/386 (95%)	358 (97%)	9 (2%)	1 (0%)	44	29

All (1) Ramachandran outliers are listed below:

Mol	Chain	Res	Type
1	A	108	PRO

5.3.2 Protein sidechains [i](#)

In the following table, the Percentiles column shows the percent sidechain outliers of the chain as a percentile score with respect to all X-ray entries followed by that with respect to entries of similar resolution.

The Analysed column shows the number of residues for which the sidechain conformation was analysed, and the total number of residues.

Mol	Chain	Analysed	Rotameric	Outliers	Percentiles	
1	A	239/250 (96%)	229 (96%)	10 (4%)	34	17
2	B	95/93 (102%)	94 (99%)	1 (1%)	78	72
All	All	334/343 (97%)	323 (97%)	11 (3%)	45	26

All (11) residues with a non-rotameric sidechain are listed below:

Mol	Chain	Res	Type
1	A	11[A]	ARG
1	A	11[B]	ARG
1	A	61	GLN
1	A	62	GLN
1	A	93	ASP
1	A	113	GLU
1	A	146	PRO
1	A	203	HIS
1	A	234	ARG
1	A	281	SER
2	B	70	PHE

Some sidechains can be flipped to improve hydrogen bonding and reduce clashes. All (1) such sidechains are listed below:

Mol	Chain	Res	Type
1	A	203	HIS

5.3.3 RNA ⓘ

There are no RNA molecules in this entry.

5.4 Non-standard residues in protein, DNA, RNA chains ⓘ

There are no non-standard protein/DNA/RNA residues in this entry.

5.5 Carbohydrates ⓘ

There are no carbohydrates in this entry.

5.6 Ligand geometry ⓘ

19 ligands are modelled in this entry.

In the following table, the Counts columns list the number of bonds (or angles) for which Mogul statistics could be retrieved, the number of bonds (or angles) that are observed in the model and the number of bonds (or angles) that are defined in the Chemical Component Dictionary. The Link column lists molecule types, if any, to which the group is linked. The Z score for a bond length (or angle) is the number of standard deviations the observed value is removed from the expected value. A bond length (or angle) with $|Z| > 2$ is considered an outlier worth inspection. RMSZ is the root-mean-square of all Z scores of the bond lengths (or angles).

Mol	Type	Chain	Res	Link	Bond lengths			Bond angles		
					Counts	RMSZ	# $ Z > 2$	Counts	RMSZ	# $ Z > 2$
3	NAG	A	288	1	14,14,15	0.96	1 (7%)	15,19,21	1.43	2 (13%)
3	NAG	A	289	1,3	14,14,15	0.88	1 (7%)	15,19,21	2.29	6 (40%)
3	NAG	A	290	3,4	14,14,15	0.60	0	15,19,21	1.12	1 (6%)
4	BMA	A	291	3,5	11,11,12	0.59	0	13,15,17	1.80	2 (15%)
5	MAN	A	292	5,4	11,11,12	0.58	0	13,15,17	1.30	2 (15%)
5	MAN	A	293	5	11,11,12	0.60	0	13,15,17	0.96	1 (7%)
3	NAG	A	294	1,3,6	14,14,15	0.69	0	15,19,21	2.03	3 (20%)
3	NAG	A	295	3,4	14,14,15	0.57	0	15,19,21	1.88	6 (40%)
4	BMA	A	296	3,5	11,11,12	0.62	0	13,15,17	1.71	5 (38%)
5	MAN	A	297	4	11,11,12	0.82	0	13,15,17	1.31	1 (7%)
5	MAN	A	298	4	11,11,12	0.64	0	13,15,17	2.16	6 (46%)
6	FUC	A	299	3	9,10,11	1.20	1 (11%)	13,14,16	2.27	6 (46%)
7	C8P	A	300	-	49,49,49	0.85	2 (4%)	55,60,60	1.42	11 (20%)
8	PLM	A	301	-	14,17,17	0.40	0	13,17,17	0.62	0
9	EDO	A	302	-	3,3,3	0.49	0	2,2,2	0.54	0
9	EDO	A	303	-	3,3,3	0.80	0	2,2,2	0.56	0
9	EDO	B	100	-	3,3,3	0.70	0	2,2,2	0.74	0
9	EDO	B	101[A]	-	3,3,3	0.51	0	2,2,2	0.64	0
9	EDO	B	101[B]	-	3,3,3	0.56	0	2,2,2	0.57	0

In the following table, the Chirals column lists the number of chiral outliers, the number of chiral centers analysed, the number of these observed in the model and the number defined in the Chemical Component Dictionary. Similar counts are reported in the Torsion and Rings columns. '-' means no outliers of that kind were identified.

Mol	Type	Chain	Res	Link	Chirals	Torsions	Rings
3	NAG	A	288	1	-	0/6/23/26	0/1/1/1
3	NAG	A	289	1,3	-	0/6/23/26	0/1/1/1
3	NAG	A	290	3,4	-	0/6/23/26	0/1/1/1
4	BMA	A	291	3,5	-	0/2/19/22	0/1/1/1
5	MAN	A	292	5,4	-	0/2/19/22	0/1/1/1
5	MAN	A	293	5	-	0/2/19/22	0/1/1/1

Continued on next page...

Continued from previous page...

Mol	Type	Chain	Res	Link	Chirals	Torsions	Rings
3	NAG	A	294	1,3,6	-	0/6/23/26	0/1/1/1
3	NAG	A	295	3,4	-	0/6/23/26	0/1/1/1
4	BMA	A	296	3,5	-	0/2/19/22	0/1/1/1
5	MAN	A	297	4	-	0/2/19/22	0/1/1/1
5	MAN	A	298	4	-	0/2/19/22	0/1/1/1
6	FUC	A	299	3	-	0/0/17/20	0/1/1/1
7	C8P	A	300	-	-	0/43/63/63	0/2/2/2
8	PLM	A	301	-	-	0/13/15/15	0/0/0/0
9	EDO	A	302	-	-	0/1/1/1	0/0/0/0
9	EDO	A	303	-	-	0/1/1/1	0/0/0/0
9	EDO	B	100	-	-	0/1/1/1	0/0/0/0
9	EDO	B	101[A]	-	-	0/1/1/1	0/0/0/0
9	EDO	B	101[B]	-	-	0/1/1/1	0/0/0/0

All (5) bond length outliers are listed below:

Mol	Chain	Res	Type	Atoms	Z	Observed(Å)	Ideal(Å)
3	A	289	NAG	O3-C3	-2.35	1.37	1.43
6	A	299	FUC	C2-C3	2.02	1.55	1.52
3	A	288	NAG	C1-C2	2.42	1.55	1.52
7	A	300	C8P	C18-C17	2.45	1.56	1.52
7	A	300	C8P	O18-C19	3.16	1.45	1.40

All (52) bond angle outliers are listed below:

Mol	Chain	Res	Type	Atoms	Z	Observed(°)	Ideal(°)
3	A	289	NAG	C3-C4-C5	-6.20	99.29	110.22
5	A	298	MAN	C2-C3-C4	-3.94	104.00	110.88
6	A	299	FUC	O5-C1-C2	-3.90	104.68	110.79
3	A	294	NAG	C2-N2-C7	-3.69	117.56	122.94
4	A	291	BMA	C1-O5-C5	-3.59	107.21	112.17
3	A	294	NAG	O7-C7-C8	-3.44	115.79	122.06
3	A	288	NAG	C1-O5-C5	-3.39	107.49	112.17
7	A	300	C8P	C18-C17-N	-3.28	105.22	109.76
6	A	299	FUC	C6-C5-C4	-3.21	107.35	113.07
3	A	295	NAG	C2-N2-C7	-3.21	118.26	122.94
5	A	298	MAN	C1-C2-C3	-3.12	105.69	109.65
5	A	298	MAN	O2-C2-C1	-3.10	102.88	109.18
7	A	300	C8P	O20-C20-C21	-3.04	103.73	110.36
3	A	295	NAG	C6-C5-C4	-3.04	105.90	113.00
4	A	296	BMA	O2-C2-C1	-2.72	103.64	109.18
3	A	295	NAG	O7-C7-C8	-2.61	117.31	122.06

Continued on next page...

Continued from previous page...

Mol	Chain	Res	Type	Atoms	Z	Observed(°)	Ideal(°)
3	A	289	NAG	O7-C7-C8	-2.61	117.31	122.06
7	A	300	C8P	O22-C22-C21	-2.60	104.71	110.36
4	A	296	BMA	O5-C1-C2	-2.59	106.73	110.79
7	A	300	C8P	O16-C16-C17	-2.59	102.79	108.98
7	A	300	C8P	C28-C27-C26	-2.58	103.79	113.24
6	A	299	FUC	C2-C3-C4	-2.52	106.48	110.88
7	A	300	C8P	C8-C9-C10	-2.50	101.59	114.45
3	A	290	NAG	C2-N2-C7	-2.49	119.31	122.94
3	A	289	NAG	O6-C6-C5	-2.44	103.13	111.34
5	A	292	MAN	O4-C4-C3	-2.44	105.05	110.36
4	A	296	BMA	O2-C2-C3	-2.33	105.59	110.17
3	A	295	NAG	O4-C4-C5	-2.32	103.44	109.28
4	A	296	BMA	O6-C6-C5	-2.31	103.58	111.34
5	A	297	MAN	O3-C3-C4	-2.30	105.35	110.36
5	A	293	MAN	C1-O5-C5	-2.27	109.04	112.17
3	A	289	NAG	O4-C4-C5	-2.09	104.01	109.28
7	A	300	C8P	O19-C19-C20	-2.07	106.31	110.30
7	A	300	C8P	O15-C15-C14	-2.03	104.83	109.25
7	A	300	C8P	O24-C24-C23	-2.03	104.51	111.34
5	A	292	MAN	O2-C2-C3	-2.03	106.19	110.17
4	A	296	BMA	C1-C2-C3	2.01	112.19	109.65
3	A	289	NAG	C1-C2-N2	2.07	114.02	110.49
5	A	298	MAN	C1-O5-C5	2.09	115.04	112.17
5	A	298	MAN	O3-C3-C4	2.20	115.15	110.36
5	A	298	MAN	O3-C3-C2	2.27	114.15	110.02
6	A	299	FUC	O4-C4-C3	2.27	115.30	110.36
7	A	300	C8P	C18-O18-C19	2.27	118.42	113.76
3	A	295	NAG	O4-C4-C3	2.35	115.47	110.36
3	A	289	NAG	C8-C7-N2	2.47	120.57	116.11
3	A	295	NAG	C1-O5-C5	2.67	115.84	112.17
3	A	288	NAG	C4-C3-C2	2.90	115.26	111.02
7	A	300	C8P	O19-C23-C22	2.90	115.00	109.66
6	A	299	FUC	O3-C3-C2	3.30	116.04	110.02
6	A	299	FUC	O3-C3-C4	3.42	117.79	110.36
3	A	294	NAG	C8-C7-N2	4.25	123.78	116.11
4	A	291	BMA	C1-C2-C3	4.65	115.54	109.65

There are no chirality outliers.

There are no torsion outliers.

There are no ring outliers.

9 monomers are involved in 10 short contacts:

Mol	Chain	Res	Type	Clashes	Symm-Clashes
3	A	288	NAG	1	0
3	A	290	NAG	1	0
5	A	292	MAN	1	0
5	A	293	MAN	1	0
3	A	294	NAG	1	0
7	A	300	C8P	2	0
8	A	301	PLM	2	0
9	A	303	EDO	1	0
9	B	101[A]	EDO	2	0

5.7 Other polymers [i](#)

There are no such residues in this entry.

5.8 Polymer linkage issues [i](#)

There are no chain breaks in this entry.

6 Fit of model and data ⓘ

6.1 Protein, DNA and RNA chains ⓘ

In the following table, the column labelled ‘#RSRZ> 2’ contains the number (and percentage) of RSRZ outliers, followed by percent RSRZ outliers for the chain as percentile scores relative to all X-ray entries and entries of similar resolution. The OWAB column contains the minimum, median, 95th percentile and maximum values of the occupancy-weighted average B-factor per residue. The column labelled ‘Q< 0.9’ lists the number of (and percentage) of residues with an average occupancy less than 0.9.

Mol	Chain	Analysed	<RSRZ>	#RSRZ>2	OWAB(Å ²)	Q<0.9
1	A	268/287 (93%)	0.14	19 (7%) 17 13	13, 21, 42, 57	0
2	B	99/99 (100%)	-0.22	1 (1%) 82 80	14, 20, 31, 40	0
All	All	367/386 (95%)	0.04	20 (5%) 26 22	13, 21, 40, 57	0

All (20) RSRZ outliers are listed below:

Mol	Chain	Res	Type	RSRZ
1	A	108	PRO	6.5
1	A	109	GLY	6.2
1	A	203	HIS	5.7
1	A	255	ALA	5.1
1	A	110	ASN	4.9
1	A	111	ALA	4.6
1	A	281	SER	4.3
1	A	280	GLY	3.6
1	A	93	ASP	3.5
1	A	7	ASN	3.4
1	A	22	SER	3.3
1	A	107	TYR	3.2
1	A	256	GLY	3.0
1	A	254	GLU	2.9
2	B	1	ILE	2.6
1	A	257	GLU	2.5
1	A	21	ARG	2.3
1	A	23	TRP	2.1
1	A	90	PRO	2.1
1	A	8	TYR	2.0

6.2 Non-standard residues in protein, DNA, RNA chains [i](#)

There are no non-standard protein/DNA/RNA residues in this entry.

6.3 Carbohydrates [i](#)

There are no carbohydrates in this entry.

6.4 Ligands [i](#)

In the following table, the Atoms column lists the number of modelled atoms in the group and the number defined in the chemical component dictionary. LLDF column lists the quality of electron density of the group with respect to its neighbouring residues in protein, DNA or RNA chains. The B-factors column lists the minimum, median, 95th percentile and maximum values of B factors of atoms in the group. The column labelled 'Q< 0.9' lists the number of atoms with occupancy less than 0.9.

Mol	Type	Chain	Res	Atoms	RSCC	RSR	LLDF	B-factors(Å ²)	Q<0.9
5	MAN	A	292	11/12	0.69	0.23	6.84	46,54,63,68	0
8	PLM	A	301	18/18	0.87	0.29	5.38	41,46,52,53	0
9	EDO	B	101[B]	4/4	0.97	0.15	1.90	21,22,25,29	4
5	MAN	A	297	11/12	0.85	0.22	1.72	41,45,50,52	0
9	EDO	B	100	4/4	0.95	0.13	1.72	22,28,30,32	0
9	EDO	B	101[A]	4/4	0.97	0.15	1.72	30,31,31,38	4
9	EDO	A	302	4/4	0.92	0.14	1.19	27,28,29,33	0
9	EDO	A	303	4/4	0.96	0.12	0.55	24,34,36,45	0
6	FUC	A	299	10/11	0.78	0.14	0.46	39,42,45,45	0
7	C8P	A	300	48/48	0.91	0.12	0.41	23,33,42,54	0
3	NAG	A	289	14/15	0.94	0.11	0.04	33,42,48,52	0
3	NAG	A	294	14/15	0.95	0.07	-1.15	26,30,33,35	0
4	BMA	A	296	11/12	0.79	0.22	-	42,45,52,57	0
5	MAN	A	293	11/12	0.63	0.38	-	75,78,81,82	0
3	NAG	A	288	14/15	0.69	0.46	-	59,66,74,75	0
4	BMA	A	291	11/12	0.69	0.42	-	67,71,74,76	0
3	NAG	A	290	14/15	0.70	0.33	-	62,65,69,71	0
3	NAG	A	295	14/15	0.92	0.10	-	35,37,41,42	0
5	MAN	A	298	11/12	0.74	0.26	-	63,67,68,71	0

6.5 Other polymers [i](#)

There are no such residues in this entry.