



# Full wwPDB X-ray Structure Validation Report ⓘ

Oct 10, 2017 – 09:29 AM EDT

PDB ID : 2GRY  
Title : Crystal structure of the human KIF2 motor domain in complex with ADP  
Authors : Wang, J.; Shen, Y.; Tempel, W.; Landry, R.; Arrowsmith, C.H.; Edwards, A.M.; Sundstrom, M.; Weigelt, J.; Bochkarev, A.; Park, H.; Structural Genomics Consortium (SGC)  
Deposited on : unknown  
Resolution : 2.35 Å(reported)

This is a Full wwPDB X-ray Structure Validation Report for a publicly released PDB entry.

We welcome your comments at [validation@mail.wwpdb.org](mailto:validation@mail.wwpdb.org)

A user guide is available at

<http://wwpdb.org/validation/2016/XrayValidationReportHelp>

with specific help available everywhere you see the ⓘ symbol.

---

The following versions of software and data (see [references ⓘ](#)) were used in the production of this report:

MolProbity	:	4.02b-467
Mogul	:	1.7.2 (RC1), CSD as538be (2017)
Xtriage (Phenix)	:	1.9-1692
EDS	:	rb-20030345
Percentile statistics	:	20161228.v01 (using entries in the PDB archive December 28th 2016)
Refmac	:	5.8.0135
CCP4	:	6.5.0
Ideal geometry (proteins)	:	Engh & Huber (2001)
Ideal geometry (DNA, RNA)	:	Parkinson et al. (1996)
Validation Pipeline (wwPDB-VP)	:	rb-20030345

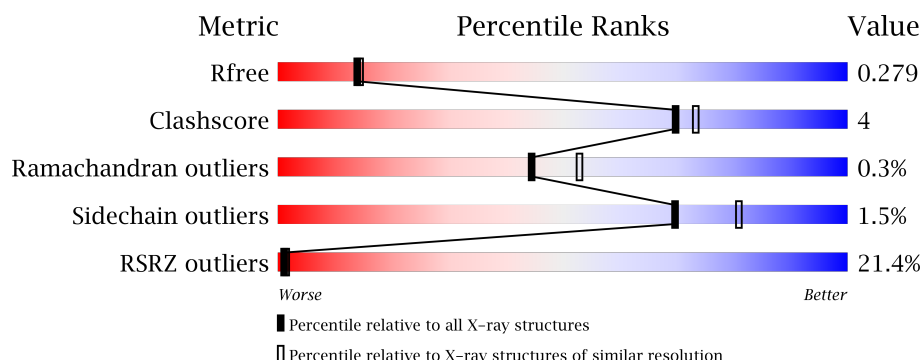
# 1 Overall quality at a glance

The following experimental techniques were used to determine the structure:

## *X-RAY DIFFRACTION*

The reported resolution of this entry is 2.35 Å.

Percentile scores (ranging between 0-100) for global validation metrics of the entry are shown in the following graphic. The table shows the number of entries on which the scores are based.



Metric	Whole archive (#Entries)	Similar resolution (#Entries, resolution range(Å))
$R_{free}$	100719	1522 (2.38-2.34)
Clashscore	112137	1626 (2.38-2.34)
Ramachandran outliers	110173	1605 (2.38-2.34)
Sidechain outliers	110143	1606 (2.38-2.34)
RSRZ outliers	101464	1528 (2.38-2.34)

The table below summarises the geometric issues observed across the polymeric chains and their fit to the electron density. The red, orange, yellow and green segments on the lower bar indicate the fraction of residues that contain outliers for  $\geq 3$ , 2, 1 and 0 types of geometric quality criteria. A grey segment represents the fraction of residues that are not modelled. The numeric value for each fraction is indicated below the corresponding segment, with a dot representing fractions  $\leq 5\%$ . The upper red bar (where present) indicates the fraction of residues that have poor fit to the electron density. The numeric value is given above the bar.

Mol	Chain	Length	Quality of chain
1	A	420	<div> <div>17%</div> <div>68%</div> <div>9%</div> <div>22%</div> </div>

The following table lists non-polymeric compounds, carbohydrate monomers and non-standard residues in protein, DNA, RNA chains that are outliers for geometric or electron-density-fit criteria:

Mol	Type	Chain	Res	Chirality	Geometry	Clashes	Electron density
4	UNX	A	2001	-	-	-	X
4	UNX	A	2002	-	-	-	X

*Continued on next page...*

*Continued from previous page...*

Mol	Type	Chain	Res	Chirality	Geometry	Clashes	Electron density
4	UNX	A	2003	-	-	-	X

## 2 Entry composition

There are 5 unique types of molecules in this entry. The entry contains 2575 atoms, of which 0 are hydrogens and 0 are deuteriums.

In the tables below, the ZeroOcc column contains the number of atoms modelled with zero occupancy, the AltConf column contains the number of residues with at least one atom in alternate conformation and the Trace column contains the number of residues modelled with at most 2 atoms.

- Molecule 1 is a protein called Kinesin-like protein KIF2.

Mol	Chain	Residues	Atoms					ZeroOcc	AltConf	Trace
			Total	C	N	O	S			
1	A	327	2519	1598	443	459	19	0	1	0

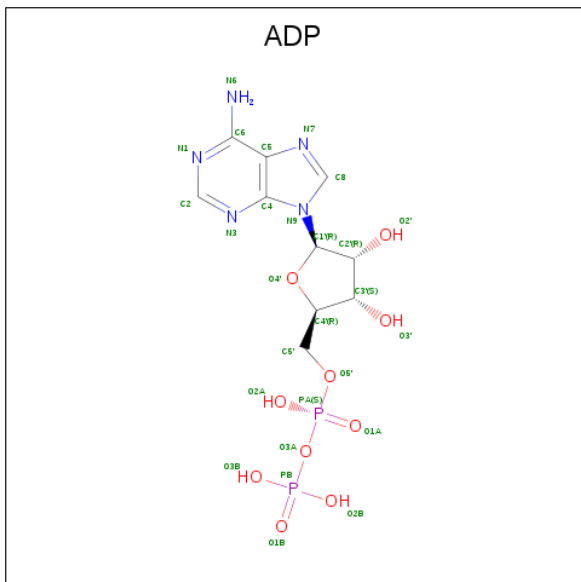
There are 19 discrepancies between the modelled and reference sequences:

Chain	Residue	Modelled	Actual	Comment	Reference
A	107	MET	-	CLONING ARTIFACT	GB 21594340
A	108	GLY	-	CLONING ARTIFACT	GB 21594340
A	109	SER	-	CLONING ARTIFACT	GB 21594340
A	110	SER	-	CLONING ARTIFACT	GB 21594340
A	111	HIS	-	EXPRESSION TAG	GB 21594340
A	112	HIS	-	EXPRESSION TAG	GB 21594340
A	113	HIS	-	EXPRESSION TAG	GB 21594340
A	114	HIS	-	EXPRESSION TAG	GB 21594340
A	115	HIS	-	EXPRESSION TAG	GB 21594340
A	116	HIS	-	EXPRESSION TAG	GB 21594340
A	117	SER	-	CLONING ARTIFACT	GB 21594340
A	118	SER	-	CLONING ARTIFACT	GB 21594340
A	119	GLY	-	CLONING ARTIFACT	GB 21594340
A	120	LEU	-	CLONING ARTIFACT	GB 21594340
A	121	VAL	-	CLONING ARTIFACT	GB 21594340
A	122	PRO	-	CLONING ARTIFACT	GB 21594340
A	123	ARG	-	CLONING ARTIFACT	GB 21594340
A	124	GLY	-	CLONING ARTIFACT	GB 21594340
A	125	SER	-	CLONING ARTIFACT	GB 21594340

- Molecule 2 is MAGNESIUM ION (three-letter code: MG) (formula: Mg).

Mol	Chain	Residues	Atoms		ZeroOcc	AltConf
2	A	1	Total	Mg	0	0
			1	1		

- Molecule 3 is ADENOSINE-5'-DIPHOSPHATE (three-letter code: ADP) (formula:  $\text{C}_{10}\text{H}_{15}\text{N}_5\text{O}_{10}\text{P}_2$ ).



Mol	Chain	Residues	Atoms					ZeroOcc	AltConf
3	A	1	Total	C	N	O	P	0	0
			27	10	5	10	2		

- Molecule 4 is UNKNOWN ATOM OR ION (three-letter code: UNX) (formula: X).

Mol	Chain	Residues	Atoms	ZeroOcc	AltConf
4	A	3	Total X 3 3	0	0

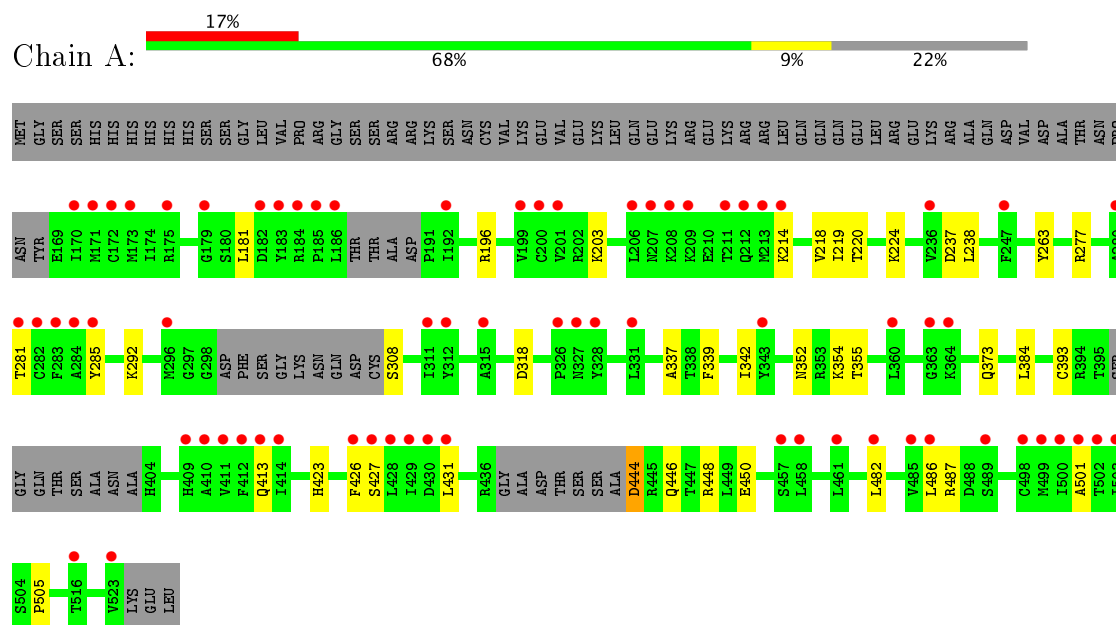
- Molecule 5 is water.

Mol	Chain	Residues	Atoms	ZeroOcc	AltConf
5	A	25	Total O 25 25	0	0

### 3 Residue-property plots [i](#)

These plots are drawn for all protein, RNA and DNA chains in the entry. The first graphic for a chain summarises the proportions of the various outlier classes displayed in the second graphic. The second graphic shows the sequence view annotated by issues in geometry and electron density. Residues are color-coded according to the number of geometric quality criteria for which they contain at least one outlier: green = 0, yellow = 1, orange = 2 and red = 3 or more. A red dot above a residue indicates a poor fit to the electron density ( $RSRZ > 2$ ). Stretches of 2 or more consecutive residues without any outlier are shown as a green connector. Residues present in the sample, but not in the model, are shown in grey.

- Molecule 1: Kinesin-like protein KIF2



## 4 Data and refinement statistics

Property	Value	Source
Space group	H 3 2	Depositor
Cell constants a, b, c, $\alpha$ , $\beta$ , $\gamma$	121.47Å 121.47Å 175.68Å 90.00° 90.00° 120.00°	Depositor
Resolution (Å)	29.29 – 2.35 29.28 – 2.35	Depositor EDS
% Data completeness (in resolution range)	99.8 (29.29-2.35) 99.8 (29.28-2.35)	Depositor EDS
$R_{merge}$	0.07	Depositor
$R_{sym}$	(Not available)	Depositor
$\langle I/\sigma(I) \rangle$ <sup>1</sup>	2.21 (at 2.36Å)	Xtriage
Refinement program	REFMAC refmac_5.2.0019	Depositor
R, $R_{free}$	0.222 , 0.283 0.217 , 0.279	Depositor DCC
$R_{free}$ test set	1077 reflections (5.42%)	DCC
Wilson B-factor (Å <sup>2</sup> )	52.0	Xtriage
Anisotropy	0.145	Xtriage
Bulk solvent $k_{sol}$ (e/Å <sup>3</sup> ), $B_{sol}$ (Å <sup>2</sup> )	0.33 , 57.8	EDS
L-test for twinning <sup>2</sup>	$\langle  L  \rangle = 0.50$ , $\langle L^2 \rangle = 0.34$	Xtriage
Estimated twinning fraction	No twinning to report.	Xtriage
$F_o, F_c$ correlation	0.91	EDS
Total number of atoms	2575	wwPDB-VP
Average B, all atoms (Å <sup>2</sup> )	59.0	wwPDB-VP

Xtriage's analysis on translational NCS is as follows: *The largest off-origin peak in the Patterson function is 5.27% of the height of the origin peak. No significant pseudotranslation is detected.*

<sup>1</sup>Intensities estimated from amplitudes.

<sup>2</sup>Theoretical values of  $\langle |L| \rangle$ ,  $\langle L^2 \rangle$  for acentric reflections are 0.5, 0.333 respectively for untwinned datasets, and 0.375, 0.2 for perfectly twinned datasets.

## 5 Model quality [i](#)

### 5.1 Standard geometry [i](#)

Bond lengths and bond angles in the following residue types are not validated in this section: UNX, MG, ADP

The Z score for a bond length (or angle) is the number of standard deviations the observed value is removed from the expected value. A bond length (or angle) with  $|Z| > 5$  is considered an outlier worth inspection. RMSZ is the root-mean-square of all Z scores of the bond lengths (or angles).

Mol	Chain	Bond lengths		Bond angles	
		RMSZ	$\# Z  > 5$	RMSZ	$\# Z  > 5$
1	A	0.78	0/2560	0.68	0/3451

Chiral center outliers are detected by calculating the chiral volume of a chiral center and verifying if the center is modelled as a planar moiety or with the opposite hand. A planarity outlier is detected by checking planarity of atoms in a peptide group, atoms in a mainchain group or atoms of a sidechain that are expected to be planar.

Mol	Chain	#Chirality outliers	#Planarity outliers
1	A	0	1

There are no bond length outliers.

There are no bond angle outliers.

There are no chirality outliers.

All (1) planarity outliers are listed below:

Mol	Chain	Res	Type	Group
1	A	224	LYS	Peptide

### 5.2 Too-close contacts [i](#)

In the following table, the Non-H and H(model) columns list the number of non-hydrogen atoms and hydrogen atoms in the chain respectively. The H(added) column lists the number of hydrogen atoms added and optimized by MolProbity. The Clashes column lists the number of clashes within the asymmetric unit, whereas Symm-Clashes lists symmetry related clashes.

Mol	Chain	Non-H	H(model)	H(added)	Clashes	Symm-Clashes
1	A	2519	0	2474	21	0
2	A	1	0	0	0	0

*Continued on next page...*



*Continued from previous page...*

Mol	Chain	Non-H	H(model)	H(added)	Clashes	Symm-Clashes
3	A	27	0	12	0	0
4	A	3	0	0	0	0
5	A	25	0	0	0	0
All	All	2575	0	2486	21	0

The all-atom clashscore is defined as the number of clashes found per 1000 atoms (including hydrogen atoms). The all-atom clashscore for this structure is 4.

All (21) close contacts within the same asymmetric unit are listed below, sorted by their clash magnitude.

Atom-1	Atom-2	Interatomic distance (Å)	Clash overlap (Å)
1:A:352:ASN:O	1:A:355:THR:HG22	1.90	0.72
1:A:444:ASP:O	1:A:448:ARG:HG3	1.99	0.63
1:A:342:ILE:HD13	1:A:482:LEU:HA	1.83	0.60
1:A:218:VAL:HG23	1:A:219:ILE:HD12	1.86	0.58
1:A:446:GLN:O	1:A:450:GLU:HG3	2.07	0.55
1:A:308:SER:HA	1:A:384:LEU:HD21	1.89	0.53
1:A:281:THR:HG22	1:A:427:SER:HB2	1.92	0.51
1:A:263:TYR:OH	1:A:318:ASP:OD2	2.24	0.49
1:A:181:LEU:HD13	1:A:220:THR:HG21	1.93	0.48
1:A:292:LYS:HE3	1:A:431:LEU:O	2.14	0.47
1:A:181:LEU:CD1	1:A:220:THR:HG21	2.45	0.46
1:A:285:TYR:O	1:A:501:ALA:HA	2.17	0.44
1:A:277:ARG:HG2	1:A:423:HIS:CE1	2.53	0.44
1:A:203:LYS:HD2	1:A:219:ILE:HG22	2.00	0.43
1:A:352:ASN:HB2	1:A:373:GLN:HG3	1.99	0.43
1:A:354:LYS:HG2	1:A:393:CYS:SG	2.59	0.42
1:A:237:ASP:O	1:A:238:LEU:HB2	2.20	0.42
1:A:337:ALA:HA	1:A:413:GLN:O	2.20	0.41
1:A:486:LEU:O	1:A:487:ARG:C	2.58	0.41
1:A:203:LYS:HE3	1:A:505:PRO:HB3	2.03	0.41
1:A:277:ARG:HA	1:A:423:HIS:O	2.21	0.40

There are no symmetry-related clashes.

## 5.3 Torsion angles [i](#)

### 5.3.1 Protein backbone [i](#)

In the following table, the Percentiles column shows the percent Ramachandran outliers of the chain as a percentile score with respect to all X-ray entries followed by that with respect to entries of similar resolution.

The Analysed column shows the number of residues for which the backbone conformation was analysed, and the total number of residues.

Mol	Chain	Analysed	Favoured	Allowed	Outliers	Percentiles	
1	A	318/420 (76%)	307 (96%)	10 (3%)	1 (0%)	44	53

All (1) Ramachandran outliers are listed below:

Mol	Chain	Res	Type
1	A	214	LYS

### 5.3.2 Protein sidechains [i](#)

In the following table, the Percentiles column shows the percent sidechain outliers of the chain as a percentile score with respect to all X-ray entries followed by that with respect to entries of similar resolution.

The Analysed column shows the number of residues for which the sidechain conformation was analysed, and the total number of residues.

Mol	Chain	Analysed	Rotameric	Outliers	Percentiles	
1	A	260/370 (70%)	256 (98%)	4 (2%)	70	81

All (4) residues with a non-rotameric sidechain are listed below:

Mol	Chain	Res	Type
1	A	196	ARG
1	A	339	PHE
1	A	426	PHE
1	A	444	ASP

Some sidechains can be flipped to improve hydrogen bonding and reduce clashes. There are no such sidechains identified.

### 5.3.3 RNA ⓘ

There are no RNA molecules in this entry.

## 5.4 Non-standard residues in protein, DNA, RNA chains ⓘ

There are no non-standard protein/DNA/RNA residues in this entry.

## 5.5 Carbohydrates ⓘ

There are no carbohydrates in this entry.

## 5.6 Ligand geometry ⓘ

Of 5 ligands modelled in this entry, 3 are unknown and 1 is monoatomic - leaving 1 for Mogul analysis.

In the following table, the Counts columns list the number of bonds (or angles) for which Mogul statistics could be retrieved, the number of bonds (or angles) that are observed in the model and the number of bonds (or angles) that are defined in the Chemical Component Dictionary. The Link column lists molecule types, if any, to which the group is linked. The Z score for a bond length (or angle) is the number of standard deviations the observed value is removed from the expected value. A bond length (or angle) with  $|Z| > 2$  is considered an outlier worth inspection. RMSZ is the root-mean-square of all Z scores of the bond lengths (or angles).

Mol	Type	Chain	Res	Link	Bond lengths			Bond angles		
					Counts	RMSZ	# $ Z  > 2$	Counts	RMSZ	# $ Z  > 2$
3	ADP	A	601	2	25,29,29	1.28	3 (12%)	24,45,45	1.81	5 (20%)

In the following table, the Chirals column lists the number of chiral outliers, the number of chiral centers analysed, the number of these observed in the model and the number defined in the Chemical Component Dictionary. Similar counts are reported in the Torsion and Rings columns. '-' means no outliers of that kind were identified.

Mol	Type	Chain	Res	Link	Chirals	Torsions	Rings
3	ADP	A	601	2	-	0/12/32/32	0/3/3/3

All (3) bond length outliers are listed below:

Mol	Chain	Res	Type	Atoms	Z	Observed(Å)	Ideal(Å)
3	A	601	ADP	C2-N3	2.67	1.36	1.32
3	A	601	ADP	O4'-C1'	2.78	1.45	1.41
3	A	601	ADP	C5-C4	3.25	1.47	1.40

All (5) bond angle outliers are listed below:

Mol	Chain	Res	Type	Atoms	Z	Observed(°)	Ideal(°)
3	A	601	ADP	N3-C2-N1	-6.14	123.51	128.86
3	A	601	ADP	C4-C5-N7	-2.76	106.75	109.41
3	A	601	ADP	O3'-C3'-C4'	-2.00	105.24	111.09
3	A	601	ADP	O2A-PA-O1A	2.08	123.06	112.28
3	A	601	ADP	C4'-O4'-C1'	2.85	112.81	109.77

There are no chirality outliers.

There are no torsion outliers.

There are no ring outliers.

No monomer is involved in short contacts.

## 5.7 Other polymers [i](#)

There are no such residues in this entry.

## 5.8 Polymer linkage issues [i](#)

There are no chain breaks in this entry.

## 6 Fit of model and data ⓘ

### 6.1 Protein, DNA and RNA chains ⓘ

In the following table, the column labelled ‘#RSRZ> 2’ contains the number (and percentage) of RSRZ outliers, followed by percent RSRZ outliers for the chain as percentile scores relative to all X-ray entries and entries of similar resolution. The OWAB column contains the minimum, median, 95<sup>th</sup> percentile and maximum values of the occupancy-weighted average B-factor per residue. The column labelled ‘Q< 0.9’ lists the number of (and percentage) of residues with an average occupancy less than 0.9.

Mol	Chain	Analysed	<RSRZ>	#RSRZ>2	OWAB(Å <sup>2</sup> )	Q<0.9
1	A	327/420 (77%)	1.25	70 (21%) ⓘ ⓘ	15, 59, 78, 106	0

All (70) RSRZ outliers are listed below:

Mol	Chain	Res	Type	RSRZ
1	A	429	ILE	7.9
1	A	282	CYS	7.7
1	A	428	LEU	7.3
1	A	212	GLN	6.8
1	A	283	PHE	6.7
1	A	431	LEU	6.6
1	A	211	THR	6.2
1	A	284	ALA	5.4
1	A	427	SER	5.4
1	A	281	THR	5.4
1	A	500	ILE	5.3
1	A	499	MET	4.8
1	A	179	GLY	4.6
1	A	498	CYS	4.6
1	A	327	ASN	4.6
1	A	412	PHE	4.5
1	A	426	PHE	4.5
1	A	411	VAL	4.5
1	A	183	TYR	4.5
1	A	182	ASP	4.3
1	A	311	ILE	4.2
1	A	502	THR	4.2
1	A	410	ALA	4.1
1	A	486	LEU	4.1
1	A	482	LEU	4.0
1	A	201	VAL	4.0
1	A	172	CYS	3.9

*Continued on next page...*

*Continued from previous page...*

Mol	Chain	Res	Type	RSRZ
1	A	326	PRO	3.8
1	A	312	TYR	3.6
1	A	285	TYR	3.6
1	A	236	VAL	3.4
1	A	360	LEU	3.4
1	A	363	GLY	3.3
1	A	208	LYS	3.3
1	A	186	LEU	3.2
1	A	414	ILE	3.2
1	A	173	MET	3.2
1	A	200[A]	CYS	3.2
1	A	458	LEU	3.1
1	A	185	PRO	3.1
1	A	280	ALA	3.0
1	A	523	VAL	3.0
1	A	213	MET	3.0
1	A	409	HIS	2.8
1	A	413	GLN	2.8
1	A	328	TYR	2.8
1	A	192	ILE	2.7
1	A	461	LEU	2.7
1	A	170	ILE	2.7
1	A	501	ALA	2.7
1	A	503	ILE	2.7
1	A	315	ALA	2.6
1	A	331	LEU	2.6
1	A	214	LYS	2.6
1	A	516	THR	2.5
1	A	171	MET	2.5
1	A	184	ARG	2.4
1	A	430	ASP	2.4
1	A	296	MET	2.4
1	A	206	LEU	2.4
1	A	209	LYS	2.3
1	A	364	LYS	2.3
1	A	485	VAL	2.3
1	A	207	ASN	2.2
1	A	175	ARG	2.1
1	A	199	VAL	2.1
1	A	247	PHE	2.1
1	A	489	SER	2.1
1	A	457	SER	2.1

*Continued on next page...*

*Continued from previous page...*

Mol	Chain	Res	Type	RSRZ
1	A	343	TYR	2.0

## 6.2 Non-standard residues in protein, DNA, RNA chains [i](#)

There are no non-standard protein/DNA/RNA residues in this entry.

## 6.3 Carbohydrates [i](#)

There are no carbohydrates in this entry.

## 6.4 Ligands [i](#)

In the following table, the Atoms column lists the number of modelled atoms in the group and the number defined in the chemical component dictionary. LLDF column lists the quality of electron density of the group with respect to its neighbouring residues in protein, DNA or RNA chains. The B-factors column lists the minimum, median, 95<sup>th</sup> percentile and maximum values of B factors of atoms in the group. The column labelled 'Q< 0.9' lists the number of atoms with occupancy less than 0.9.

Mol	Type	Chain	Res	Atoms	RSCC	RSR	LLDF	B-factors(Å <sup>2</sup> )	Q<0.9
4	UNX	A	2001	1/1	-0.51	3.42	56.13	2,2,2,2	1
4	UNX	A	2003	1/1	0.15	2.70	42.06	2,2,2,2	1
4	UNX	A	2002	1/1	0.09	2.32	27.16	2,2,2,2	1
3	ADP	A	601	27/27	0.92	0.18	-0.34	40,47,64,70	0
2	MG	A	701	1/1	0.96	0.05	-	42,42,42,42	0

## 6.5 Other polymers [i](#)

There are no such residues in this entry.