



Full wwPDB X-ray Structure Validation Report ⓘ

Jul 3, 2017 – 12:23 PM EDT

PDB ID : 5GVM
Title : Plasmodium vivax SHMT bound with PLP-glycine and GS557
Authors : Chitnumsub, P.; Jaruwat, A.; Leartsakulpanich, U.; Schwertz, G.
Deposited on : unknown
Resolution : 2.24 Å(reported)

This is a Full wwPDB X-ray Structure Validation Report for a publicly released PDB entry.

We welcome your comments at validation@mail.wwpdb.org

A user guide is available at

<http://wwpdb.org/validation/2016/XrayValidationReportHelp>

with specific help available everywhere you see the ⓘ symbol.

The following versions of software and data (see [references ⓘ](#)) were used in the production of this report:

MolProbity : 4.02b-467
Mogul : 1.7.2 (RC1), CSD as538be (2017)
Xtriage (Phenix) : 1.9-1692
EDS : rb-20029824
Percentile statistics : 20161228.v01 (using entries in the PDB archive December 28th 2016)
Refmac : 5.8.0135
CCP4 : 6.5.0
Ideal geometry (proteins) : Engh & Huber (2001)
Ideal geometry (DNA, RNA) : Parkinson et al. (1996)
Validation Pipeline (wwPDB-VP) : rb-20029824

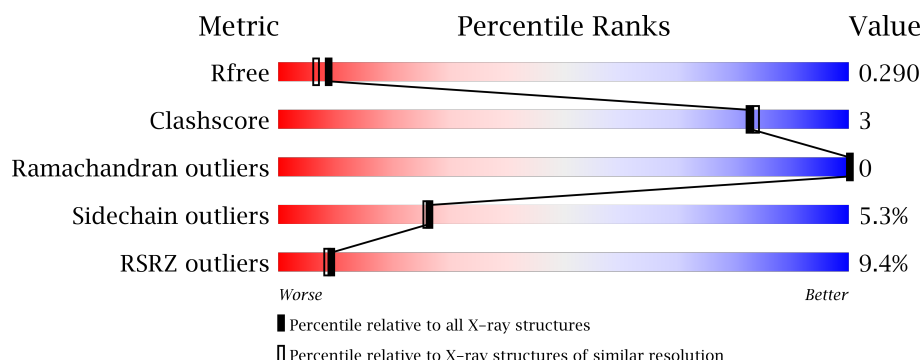
1 Overall quality at a glance

The following experimental techniques were used to determine the structure:

X-RAY DIFFRACTION

The reported resolution of this entry is 2.24 Å.

Percentile scores (ranging between 0-100) for global validation metrics of the entry are shown in the following graphic. The table shows the number of entries on which the scores are based.



Metric	Whole archive (#Entries)	Similar resolution (#Entries, resolution range(Å))
R_{free}	100719	1804 (2.26-2.22)
Clashscore	112137	1957 (2.26-2.22)
Ramachandran outliers	110173	1916 (2.26-2.22)
Sidechain outliers	110143	1917 (2.26-2.22)
RSRZ outliers	101464	1809 (2.26-2.22)

The table below summarises the geometric issues observed across the polymeric chains and their fit to the electron density. The red, orange, yellow and green segments on the lower bar indicate the fraction of residues that contain outliers for ≥ 3 , 2, 1 and 0 types of geometric quality criteria. A grey segment represents the fraction of residues that are not modelled. The numeric value for each fraction is indicated below the corresponding segment, with a dot representing fractions $\leq 5\%$. The upper red bar (where present) indicates the fraction of residues that have poor fit to the electron density. The numeric value is given above the bar.

Mol	Chain	Length	Quality of chain
1	A	442	<div> <div>7%</div> <div>90%</div> <div>10%</div> <div>.</div> </div>
1	B	442	<div> <div>10%</div> <div>87%</div> <div>12%</div> <div>.</div> </div>
1	C	442	<div> <div>11%</div> <div>90%</div> <div>10%</div> </div>

2 Entry composition [i](#)

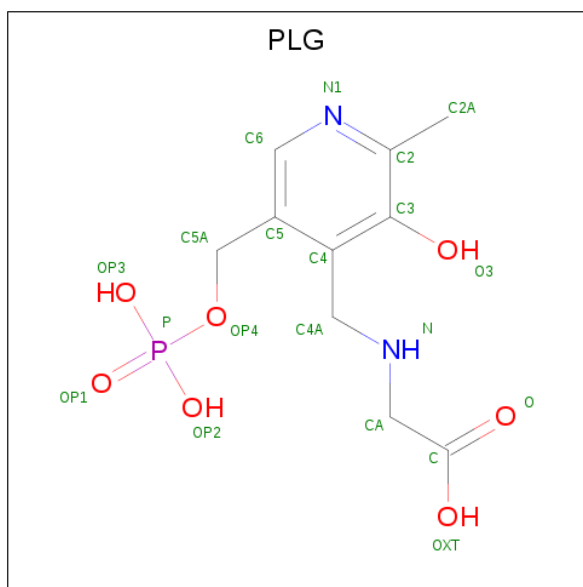
There are 5 unique types of molecules in this entry. The entry contains 10798 atoms, of which 0 are hydrogens and 0 are deuteriums.

In the tables below, the ZeroOcc column contains the number of atoms modelled with zero occupancy, the AltConf column contains the number of residues with at least one atom in alternate conformation and the Trace column contains the number of residues modelled with at most 2 atoms.

- Molecule 1 is a protein called Serine hydroxymethyltransferase, putative.

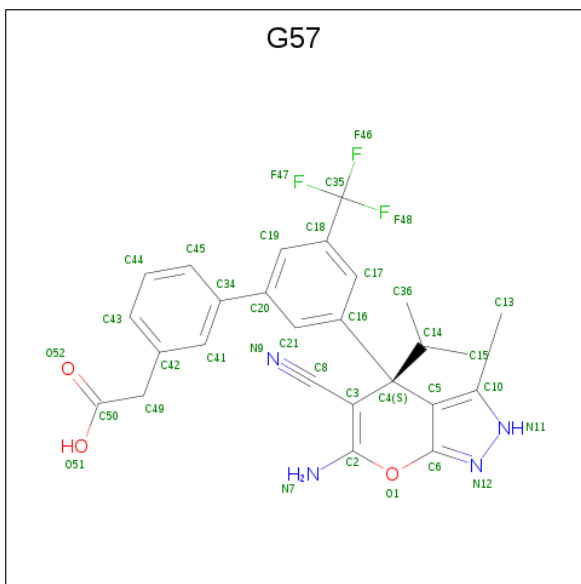
Mol	Chain	Residues	Atoms					ZeroOcc	AltConf	Trace
1	A	442	Total	C	N	O	S	0	0	0
			3458	2186	600	655	17			
1	B	442	Total	C	N	O	S	0	0	0
			3458	2186	600	655	17			
1	C	442	Total	C	N	O	S	0	0	0
			3458	2186	600	655	17			

- Molecule 2 is N-GLYCINE-[3-HYDROXY-2-METHYL-5-PHOSPHONOOXYMETHYL-PYRIDIN-4-YL-METHANE] (three-letter code: PLG) (formula: C₁₀H₁₅N₂O₇P).



Mol	Chain	Residues	Atoms					ZeroOcc	AltConf
2	A	1	Total	C	N	O	P	0	0
			20	10	2	7	1		
2	B	1	Total	C	N	O	P	0	0
			20	10	2	7	1		
2	C	1	Total	C	N	O	P	0	0
			20	10	2	7	1		

- Molecule 3 is 2-[3-[3-[(4 {S})-6-azanyl-5-cyano-3-methyl-4-propan-2-yl-2 {H}-pyrano[2,3-c]pyrazol-4-yl]-5-(trifluoromethyl)phenyl]phenyl]ethanoic acid (three-letter code: G57) (formula: C₂₆H₂₃F₃N₄O₃).



Mol	Chain	Residues	Atoms					ZeroOcc	AltConf
3	A	1	Total	C	F	N	O	0	0
			36	26	3	4	3		
3	B	1	Total	C	F	N	O	0	0
			36	26	3	4	3		
3	C	1	Total	C	F	N	O	0	0
			36	26	3	4	3		

- Molecule 4 is CHLORIDE ION (three-letter code: CL) (formula: Cl).

Mol	Chain	Residues	Atoms		ZeroOcc	AltConf
4	A	1	Total	Cl	0	0
			1	1		
4	C	1	Total	Cl	0	0
			1	1		

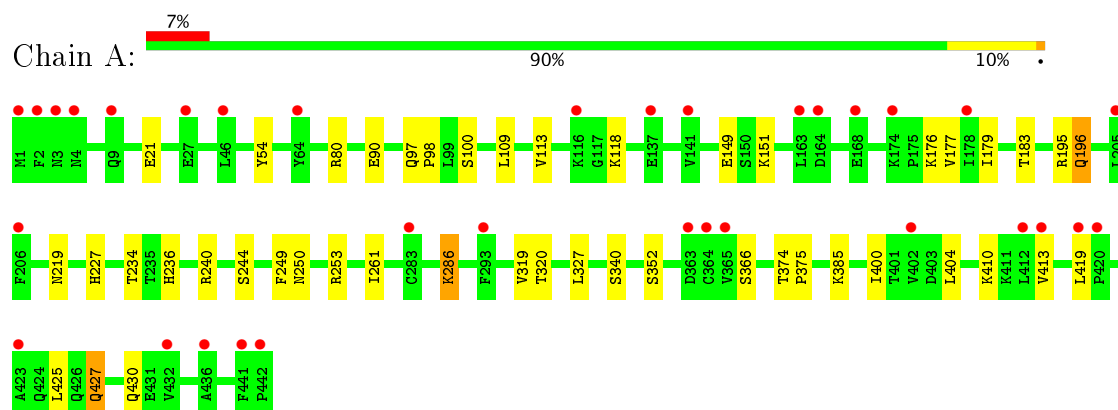
- Molecule 5 is water.

Mol	Chain	Residues	Atoms		ZeroOcc	AltConf
5	A	88	Total	O	0	0
			88	88		
5	B	85	Total	O	0	0
			85	85		
5	C	81	Total	O	0	0
			81	81		

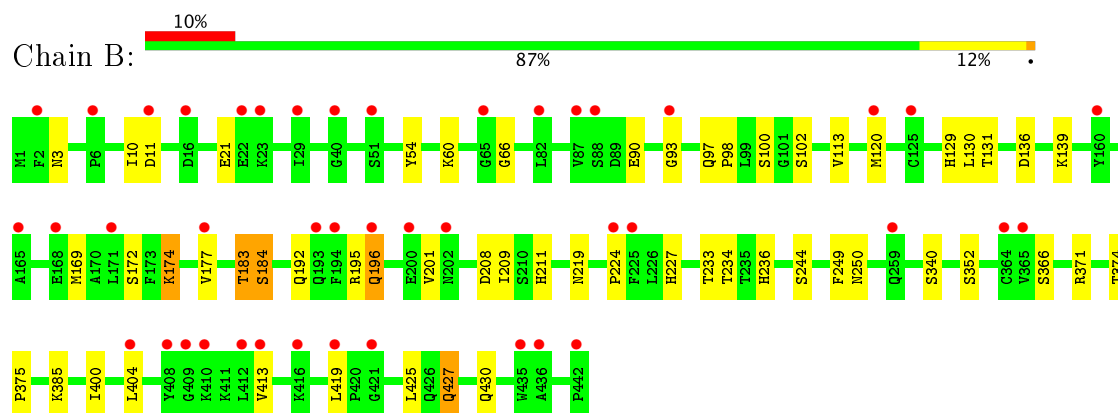
3 Residue-property plots [i](#)

These plots are drawn for all protein, RNA and DNA chains in the entry. The first graphic for a chain summarises the proportions of the various outlier classes displayed in the second graphic. The second graphic shows the sequence view annotated by issues in geometry and electron density. Residues are color-coded according to the number of geometric quality criteria for which they contain at least one outlier: green = 0, yellow = 1, orange = 2 and red = 3 or more. A red dot above a residue indicates a poor fit to the electron density ($RSRZ > 2$). Stretches of 2 or more consecutive residues without any outlier are shown as a green connector. Residues present in the sample, but not in the model, are shown in grey.

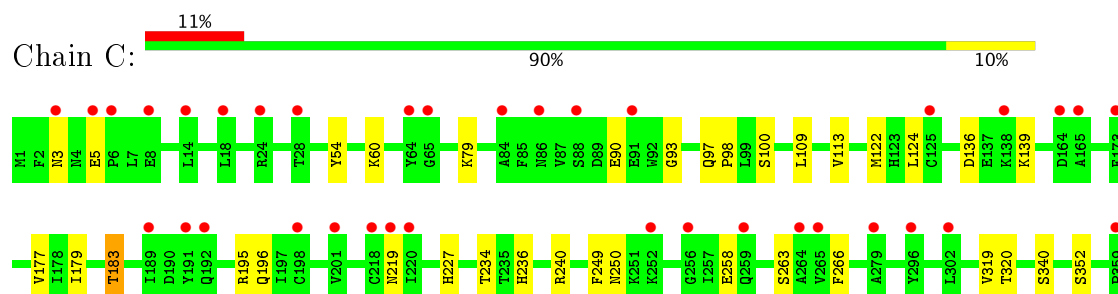
- Molecule 1: Serine hydroxymethyltransferase, putative

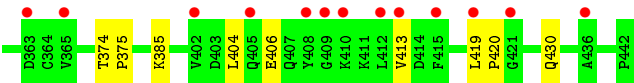


- Molecule 1: Serine hydroxymethyltransferase, putative



- Molecule 1: Serine hydroxymethyltransferase, putative





4 Data and refinement statistics

Property	Value	Source
Space group	C 1 2 1	Depositor
Cell constants a, b, c, α , β , γ	101.86Å 58.79Å 234.06Å 90.00° 90.03° 90.00°	Depositor
Resolution (Å)	50.01 – 2.24 49.76 – 2.24	Depositor EDS
% Data completeness (in resolution range)	93.6 (50.01-2.24) 93.6 (49.76-2.24)	Depositor EDS
R_{merge}	0.03	Depositor
R_{sym}	(Not available)	Depositor
$\langle I/\sigma(I) \rangle$ ¹	9.43 (at 2.25Å)	Xtriage
Refinement program	REFMAC 5.8.0103	Depositor
R, R_{free}	0.240 , 0.297 0.240 , 0.290	Depositor DCC
R_{free} test set	6361 reflections (11.23%)	DCC
Wilson B-factor (Å ²)	27.5	Xtriage
Anisotropy	0.031	Xtriage
Bulk solvent k_{sol} (e/Å ³), B_{sol} (Å ²)	0.36 , 15.6	EDS
L-test for twinning ²	$\langle L \rangle = 0.51$, $\langle L^2 \rangle = 0.34$	Xtriage
Estimated twinning fraction	0.024 for -1/2*h-3/2*k,-1/2*h+1/2*k,-l 0.022 for -1/2*h+3/2*k,1/2*h+1/2*k,-l 0.467 for 1/2*h-3/2*k,-1/2*h-1/2*k,-l 0.469 for 1/2*h+3/2*k,1/2*h-1/2*k,-l 0.018 for -h,-k,l	Xtriage
F_o, F_c correlation	0.92	EDS
Total number of atoms	10798	wwPDB-VP
Average B, all atoms (Å ²)	30.0	wwPDB-VP

Xtriage's analysis on translational NCS is as follows: *The largest off-origin peak in the Patterson function is 4.45% of the height of the origin peak. No significant pseudotranslation is detected.*

¹Intensities estimated from amplitudes.

²Theoretical values of $\langle |L| \rangle$, $\langle L^2 \rangle$ for acentric reflections are 0.5, 0.333 respectively for untwinned datasets, and 0.375, 0.2 for perfectly twinned datasets.

5 Model quality [i](#)

5.1 Standard geometry [i](#)

Bond lengths and bond angles in the following residue types are not validated in this section: PLG, G57, CL

The Z score for a bond length (or angle) is the number of standard deviations the observed value is removed from the expected value. A bond length (or angle) with $|Z| > 5$ is considered an outlier worth inspection. RMSZ is the root-mean-square of all Z scores of the bond lengths (or angles).

Mol	Chain	Bond lengths		Bond angles	
		RMSZ	# Z >5	RMSZ	# Z >5
1	A	0.52	0/3521	0.68	1/4754 (0.0%)
1	B	0.52	0/3521	0.69	1/4754 (0.0%)
1	C	0.51	0/3521	0.68	0/4754
All	All	0.52	0/10563	0.68	2/14262 (0.0%)

There are no bond length outliers.

All (2) bond angle outliers are listed below:

Mol	Chain	Res	Type	Atoms	Z	Observed(°)	Ideal(°)
1	B	208	ASP	CB-CG-OD1	5.50	123.25	118.30
1	A	240	ARG	NE-CZ-NH1	5.01	122.80	120.30

There are no chirality outliers.

There are no planarity outliers.

5.2 Too-close contacts [i](#)

In the following table, the Non-H and H(model) columns list the number of non-hydrogen atoms and hydrogen atoms in the chain respectively. The H(added) column lists the number of hydrogen atoms added and optimized by MolProbity. The Clashes column lists the number of clashes within the asymmetric unit, whereas Symm-Clashes lists symmetry related clashes.

Mol	Chain	Non-H	H(model)	H(added)	Clashes	Symm-Clashes
1	A	3458	0	3477	17	0
1	B	3458	0	3477	26	0
1	C	3458	0	3477	17	0
2	A	20	0	11	0	0
2	B	20	0	11	1	0
2	C	20	0	11	1	0

Continued on next page...

Continued from previous page...

Mol	Chain	Non-H	H(model)	H(added)	Clashes	Symm-Clashes
3	A	36	0	0	1	0
3	B	36	0	0	1	0
3	C	36	0	0	1	0
4	A	1	0	0	0	0
4	C	1	0	0	0	0
5	A	88	0	0	1	0
5	B	85	0	0	3	0
5	C	81	0	0	3	0
All	All	10798	0	10464	61	0

The all-atom clashscore is defined as the number of clashes found per 1000 atoms (including hydrogen atoms). The all-atom clashscore for this structure is 3.

All (61) close contacts within the same asymmetric unit are listed below, sorted by their clash magnitude.

Atom-1	Atom-2	Interatomic distance (Å)	Clash overlap (Å)
1:B:196:GLN:NE2	5:B:602:HOH:O	2.31	0.60
1:B:234:THR:HB	1:B:236:HIS:CE1	2.38	0.59
1:A:427:GLN:HE21	1:A:427:GLN:HA	1.68	0.57
1:B:130:LEU:HD12	5:B:624:HOH:O	2.02	0.57
1:A:427:GLN:NE2	1:A:427:GLN:HA	2.22	0.55
1:A:234:THR:HB	1:A:236:HIS:CE1	2.42	0.55
1:C:319:VAL:HG12	1:C:320:THR:HG23	1.90	0.54
1:B:195:ARG:HB2	1:B:227:HIS:HB3	1.90	0.53
1:B:174:LYS:HE3	1:B:201:VAL:HG13	1.92	0.52
1:C:109:LEU:HD21	1:C:179:ILE:HD11	1.93	0.51
1:B:404:LEU:CD1	1:B:419:LEU:HD23	2.41	0.51
1:A:319:VAL:HG12	1:A:320:THR:HG23	1.93	0.51
1:B:3:ASN:ND2	1:B:10:ILE:HD13	2.26	0.51
1:C:195:ARG:HB2	1:C:227:HIS:HB3	1.92	0.51
3:C:502:G57:C17	3:C:502:G57:C8	2.89	0.50
1:B:184:SER:HB3	1:B:371:ARG:HD3	1.95	0.49
3:A:502:G57:C8	3:A:502:G57:C17	2.90	0.48
1:A:249:PHE:HB3	1:A:261:ILE:HD12	1.95	0.48
1:C:240:ARG:HD3	5:C:678:HOH:O	2.13	0.48
1:C:234:THR:HB	1:C:236:HIS:CE1	2.49	0.47
1:A:400:ILE:HG21	1:A:425:LEU:HD21	1.95	0.47
1:B:183:THR:HB	2:B:501:PLG:O3	2.15	0.47
1:B:201:VAL:HG12	1:B:201:VAL:O	2.14	0.47
3:B:502:G57:C8	3:B:502:G57:C17	2.92	0.46
1:C:196:GLN:NE2	5:C:602:HOH:O	2.37	0.46

Continued on next page...

Continued from previous page...

Atom-1	Atom-2	Interatomic distance (Å)	Clash overlap (Å)
1:B:93:GLY:HA3	1:B:249:PHE:CE1	2.50	0.46
1:A:113:VAL:CG1	1:A:177:VAL:HG23	2.46	0.45
1:A:195:ARG:HB2	1:A:227:HIS:HB3	1.99	0.45
1:A:80:ARG:NH1	1:B:11:ASP:OD2	2.44	0.45
1:B:97:GLN:N	1:B:98:PRO:CD	2.80	0.45
1:B:374:THR:N	1:B:375:PRO:CD	2.80	0.44
1:A:404:LEU:CD1	1:A:419:LEU:HD23	2.48	0.44
1:B:209:ILE:HG13	1:B:233:THR:HB	2.00	0.44
1:B:400:ILE:HG21	1:B:425:LEU:HD21	1.99	0.44
1:B:66:GLY:N	5:B:604:HOH:O	2.51	0.43
1:C:113:VAL:CG1	1:C:177:VAL:HG23	2.48	0.43
1:A:374:THR:N	1:A:375:PRO:CD	2.82	0.43
1:B:120:MET:HG2	1:B:169:MET:HE3	2.00	0.43
1:A:109:LEU:HD21	1:A:179:ILE:HD11	2.00	0.43
1:C:79:LYS:NZ	5:C:601:HOH:O	2.08	0.43
1:C:183:THR:HB	2:C:501:PLG:O3	2.18	0.43
1:B:113:VAL:CG1	1:B:177:VAL:HG23	2.48	0.42
1:C:374:THR:N	1:C:375:PRO:CD	2.82	0.42
1:C:404:LEU:CD1	1:C:419:LEU:HD23	2.50	0.42
1:C:249:PHE:CE2	1:C:258:GLU:HA	2.54	0.42
1:B:209:ILE:HG21	1:B:224:PRO:HG3	2.02	0.42
1:A:196:GLN:NE2	5:A:601:HOH:O	2.41	0.42
1:A:286:LYS:NZ	1:B:10:ILE:O	2.53	0.42
1:C:97:GLN:N	1:C:98:PRO:CD	2.83	0.41
1:B:427:GLN:HA	1:B:427:GLN:NE2	2.34	0.41
1:B:427:GLN:HA	1:B:427:GLN:HE21	1.85	0.41
1:C:3:ASN:OD1	1:C:5:GLU:HG2	2.21	0.41
1:A:113:VAL:HG12	1:A:176:LYS:HB3	2.02	0.41
1:B:183:THR:HA	1:B:211:HIS:CD2	2.56	0.41
1:A:97:GLN:N	1:A:98:PRO:CD	2.84	0.41
1:C:263:SER:HA	1:C:266:PHE:O	2.20	0.41
1:B:129:HIS:HA	1:B:183:THR:HG21	2.03	0.41
1:B:102:SER:HA	1:B:131:THR:HG21	2.03	0.41
1:A:118:LYS:HA	1:A:149:GLU:O	2.21	0.40
1:C:93:GLY:HA3	1:C:249:PHE:CE2	2.56	0.40
1:C:419:LEU:HB2	1:C:420:PRO:HD3	2.04	0.40

There are no symmetry-related clashes.

5.3 Torsion angles

5.3.1 Protein backbone

In the following table, the Percentiles column shows the percent Ramachandran outliers of the chain as a percentile score with respect to all X-ray entries followed by that with respect to entries of similar resolution.

The Analysed column shows the number of residues for which the backbone conformation was analysed, and the total number of residues.

Mol	Chain	Analysed	Favoured	Allowed	Outliers	Percentiles	
1	A	440/442 (100%)	428 (97%)	12 (3%)	0	100	100
1	B	440/442 (100%)	430 (98%)	10 (2%)	0	100	100
1	C	440/442 (100%)	428 (97%)	12 (3%)	0	100	100
All	All	1320/1326 (100%)	1286 (97%)	34 (3%)	0	100	100

There are no Ramachandran outliers to report.

5.3.2 Protein sidechains

In the following table, the Percentiles column shows the percent sidechain outliers of the chain as a percentile score with respect to all X-ray entries followed by that with respect to entries of similar resolution.

The Analysed column shows the number of residues for which the sidechain conformation was analysed, and the total number of residues.

Mol	Chain	Analysed	Rotameric	Outliers	Percentiles	
1	A	381/381 (100%)	360 (94%)	21 (6%)	25	24
1	B	381/381 (100%)	358 (94%)	23 (6%)	22	20
1	C	381/381 (100%)	364 (96%)	17 (4%)	32	34
All	All	1143/1143 (100%)	1082 (95%)	61 (5%)	26	26

All (61) residues with a non-rotameric sidechain are listed below:

Mol	Chain	Res	Type
1	A	21	GLU
1	A	54	TYR
1	A	90	GLU
1	A	100	SER
1	A	151	LYS

Continued on next page...

Continued from previous page...

Mol	Chain	Res	Type
1	A	183	THR
1	A	196	GLN
1	A	219	ASN
1	A	244	SER
1	A	250	ASN
1	A	253	ARG
1	A	286	LYS
1	A	327	LEU
1	A	340	SER
1	A	352	SER
1	A	366	SER
1	A	385	LYS
1	A	410	LYS
1	A	413	VAL
1	A	427	GLN
1	A	430	GLN
1	B	21	GLU
1	B	54	TYR
1	B	60	LYS
1	B	90	GLU
1	B	100	SER
1	B	136	ASP
1	B	139	LYS
1	B	172	SER
1	B	174	LYS
1	B	183	THR
1	B	184	SER
1	B	192	GLN
1	B	196	GLN
1	B	219	ASN
1	B	244	SER
1	B	250	ASN
1	B	340	SER
1	B	352	SER
1	B	366	SER
1	B	385	LYS
1	B	413	VAL
1	B	427	GLN
1	B	430	GLN
1	C	54	TYR
1	C	60	LYS
1	C	90	GLU

Continued on next page...

Continued from previous page...

Mol	Chain	Res	Type
1	C	100	SER
1	C	122	MET
1	C	124	LEU
1	C	136	ASP
1	C	139	LYS
1	C	183	THR
1	C	219	ASN
1	C	250	ASN
1	C	340	SER
1	C	352	SER
1	C	385	LYS
1	C	406	GLU
1	C	413	VAL
1	C	430	GLN

Some sidechains can be flipped to improve hydrogen bonding and reduce clashes. All (6) such sidechains are listed below:

Mol	Chain	Res	Type
1	A	427	GLN
1	B	427	GLN
1	B	430	GLN
1	C	227	HIS
1	C	427	GLN
1	C	430	GLN

5.3.3 RNA ⓘ

There are no RNA molecules in this entry.

5.4 Non-standard residues in protein, DNA, RNA chains ⓘ

There are no non-standard protein/DNA/RNA residues in this entry.

5.5 Carbohydrates ⓘ

There are no carbohydrates in this entry.

5.6 Ligand geometry

Of 8 ligands modelled in this entry, 2 are monoatomic - leaving 6 for Mogul analysis.

In the following table, the Counts columns list the number of bonds (or angles) for which Mogul statistics could be retrieved, the number of bonds (or angles) that are observed in the model and the number of bonds (or angles) that are defined in the chemical component dictionary. The Link column lists molecule types, if any, to which the group is linked. The Z score for a bond length (or angle) is the number of standard deviations the observed value is removed from the expected value. A bond length (or angle) with $|Z| > 2$ is considered an outlier worth inspection. RMSZ is the root-mean-square of all Z scores of the bond lengths (or angles).

Mol	Type	Chain	Res	Link	Bond lengths			Bond angles		
					Counts	RMSZ	# Z > 2	Counts	RMSZ	# Z > 2
2	PLG	A	501	-	17,20,20	3.35	3 (17%)	23,28,28	1.88	9 (39%)
3	G57	A	502	-	31,39,39	2.35	2 (6%)	39,60,60	1.51	4 (10%)
2	PLG	B	501	-	17,20,20	3.55	3 (17%)	23,28,28	1.97	6 (26%)
3	G57	B	502	-	31,39,39	2.40	3 (9%)	39,60,60	1.70	7 (17%)
2	PLG	C	501	-	17,20,20	3.44	3 (17%)	23,28,28	2.03	8 (34%)
3	G57	C	502	-	31,39,39	2.33	2 (6%)	39,60,60	1.28	6 (15%)

In the following table, the Chirals column lists the number of chiral outliers, the number of chiral centers analysed, the number of these observed in the model and the number defined in the chemical component dictionary. Similar counts are reported in the Torsion and Rings columns. '-' means no outliers of that kind were identified.

Mol	Type	Chain	Res	Link	Chirals	Torsions	Rings
2	PLG	A	501	-	-	0/10/12/12	0/1/1/1
3	G57	A	502	-	-	0/24/48/48	0/4/4/4
2	PLG	B	501	-	-	0/10/12/12	0/1/1/1
3	G57	B	502	-	-	0/24/48/48	0/4/4/4
2	PLG	C	501	-	-	0/10/12/12	0/1/1/1
3	G57	C	502	-	-	0/24/48/48	0/4/4/4

All (16) bond length outliers are listed below:

Mol	Chain	Res	Type	Atoms	Z	Observed(Å)	Ideal(Å)
3	A	502	G57	C8-C3	-11.36	1.26	1.42
3	B	502	G57	C8-C3	-11.28	1.26	1.42
3	C	502	G57	C8-C3	-11.15	1.27	1.42
3	B	502	G57	N11-N12	2.09	1.41	1.37
2	B	501	PLG	C5-C4	5.19	1.47	1.40
3	C	502	G57	O1-C2	5.23	1.43	1.36
2	A	501	PLG	C5-C4	5.29	1.47	1.40

Continued on next page...

Continued from previous page...

Mol	Chain	Res	Type	Atoms	Z	Observed(Å)	Ideal(Å)
3	A	502	G57	O1-C2	5.38	1.43	1.36
2	A	501	PLG	C3-C4	5.41	1.48	1.40
2	C	501	PLG	C5-C4	5.53	1.48	1.40
2	B	501	PLG	C3-C4	5.56	1.48	1.40
2	C	501	PLG	C3-C4	5.77	1.49	1.40
3	B	502	G57	O1-C2	6.03	1.44	1.36
2	A	501	PLG	C3-C2	11.22	1.48	1.40
2	C	501	PLG	C3-C2	11.40	1.48	1.40
2	B	501	PLG	C3-C2	12.18	1.49	1.40

All (40) bond angle outliers are listed below:

Mol	Chain	Res	Type	Atoms	Z	Observed(°)	Ideal(°)
3	B	502	G57	C3-C2-N7	-3.62	123.94	127.58
3	A	502	G57	C3-C2-N7	-3.45	124.11	127.58
2	C	501	PLG	C-CA-N	-3.21	106.36	111.91
2	C	501	PLG	C3-C4-C5	-3.06	115.69	118.71
2	B	501	PLG	C-CA-N	-2.96	106.78	111.91
2	B	501	PLG	C3-C4-C5	-2.74	116.01	118.71
2	A	501	PLG	C-CA-N	-2.73	107.19	111.91
3	B	502	G57	F46-C35-C18	-2.65	106.72	112.95
3	C	502	G57	C3-C2-N7	-2.46	125.11	127.58
2	A	501	PLG	C3-C2-N1	-2.41	117.59	120.75
3	A	502	G57	F47-C35-C18	-2.30	107.54	112.95
3	C	502	G57	F46-C35-C18	-2.22	107.74	112.95
2	C	501	PLG	OP3-P-OP4	-2.19	100.92	106.73
3	C	502	G57	F47-C35-C18	-2.12	107.97	112.95
2	A	501	PLG	C3-C4-C5	-2.12	116.62	118.71
2	A	501	PLG	OP3-P-OP4	-2.10	101.13	106.73
3	C	502	G57	C45-C34-C20	-2.07	117.72	121.38
3	B	502	G57	F47-C35-C18	-2.01	108.23	112.95
2	C	501	PLG	C6-N1-C2	2.23	123.56	119.26
2	C	501	PLG	OP4-C5A-C5	2.38	114.10	109.32
2	C	501	PLG	OP3-P-OP2	2.45	117.51	107.61
2	A	501	PLG	OP3-P-OP2	2.52	117.77	107.61
3	B	502	G57	C6-O1-C2	2.55	121.01	118.48
2	B	501	PLG	C6-N1-C2	2.58	124.22	119.26
3	B	502	G57	C5-C4-C3	2.62	110.37	104.33
2	A	501	PLG	C6-N1-C2	2.68	124.42	119.26
2	B	501	PLG	OP4-C5A-C5	2.78	114.91	109.32
3	A	502	G57	C13-C10-N11	2.87	125.96	119.65
3	C	502	G57	C13-C10-N11	2.92	126.06	119.65

Continued on next page...

Continued from previous page...

Mol	Chain	Res	Type	Atoms	Z	Observed(°)	Ideal(°)
2	A	501	PLG	OP4-C5A-C5	2.93	115.20	109.32
2	A	501	PLG	C4A-C4-C3	3.14	123.11	119.65
3	B	502	G57	C13-C10-N11	3.20	126.69	119.65
3	C	502	G57	O1-C2-N7	3.81	113.09	110.21
2	A	501	PLG	CA-N-C4A	4.07	121.25	112.18
2	C	501	PLG	C4A-C4-C3	4.12	124.19	119.65
2	B	501	PLG	CA-N-C4A	4.37	121.92	112.18
2	B	501	PLG	C4A-C4-C3	4.41	124.52	119.65
2	C	501	PLG	CA-N-C4A	4.78	122.84	112.18
3	A	502	G57	O1-C2-N7	5.53	114.39	110.21
3	B	502	G57	O1-C2-N7	6.61	115.21	110.21

There are no chirality outliers.

There are no torsion outliers.

There are no ring outliers.

5 monomers are involved in 5 short contacts:

Mol	Chain	Res	Type	Clashes	Symm-Clashes
3	A	502	G57	1	0
2	B	501	PLG	1	0
3	B	502	G57	1	0
2	C	501	PLG	1	0
3	C	502	G57	1	0

5.7 Other polymers [i](#)

There are no such residues in this entry.

5.8 Polymer linkage issues [i](#)

There are no chain breaks in this entry.

6 Fit of model and data ⓘ

6.1 Protein, DNA and RNA chains ⓘ

In the following table, the column labelled ‘#RSRZ> 2’ contains the number (and percentage) of RSRZ outliers, followed by percent RSRZ outliers for the chain as percentile scores relative to all X-ray entries and entries of similar resolution. The OWAB column contains the minimum, median, 95th percentile and maximum values of the occupancy-weighted average B-factor per residue. The column labelled ‘Q< 0.9’ lists the number of (and percentage) of residues with an average occupancy less than 0.9.

Mol	Chain	Analysed	<RSRZ>	#RSRZ>2	OWAB(Å ²)	Q<0.9
1	A	442/442 (100%)	0.71	33 (7%) 15 14	16, 28, 47, 66	0
1	B	442/442 (100%)	0.88	43 (9%) 8 8	16, 29, 47, 59	0
1	C	442/442 (100%)	0.90	49 (11%) 6 5	16, 29, 48, 61	0
All	All	1326/1326 (100%)	0.83	125 (9%) 9 8	16, 29, 48, 66	0

All (125) RSRZ outliers are listed below:

Mol	Chain	Res	Type	RSRZ
1	A	1	MET	4.9
1	B	125	CYS	4.8
1	C	413	VAL	4.1
1	B	259	GLN	4.1
1	A	423	ALA	4.0
1	A	363	ASP	4.0
1	A	64	TYR	3.8
1	B	365	VAL	3.8
1	C	412	LEU	3.8
1	A	436	ALA	3.7
1	B	413	VAL	3.6
1	B	442	PRO	3.6
1	A	4	ASN	3.5
1	B	88	SER	3.5
1	A	413	VAL	3.5
1	C	64	TYR	3.5
1	C	363	ASP	3.5
1	C	219	ASN	3.4
1	C	419	LEU	3.4
1	B	412	LEU	3.4
1	B	65	GLY	3.3
1	C	259	GLN	3.3
1	C	138	LYS	3.2

Continued on next page...

Continued from previous page...

Mol	Chain	Res	Type	RSRZ
1	A	3	ASN	3.2
1	A	9	GLN	3.2
1	B	22	GLU	3.2
1	C	296	TYR	3.2
1	B	177	VAL	3.2
1	A	419	LEU	3.2
1	C	8	GLU	3.1
1	B	364	CYS	3.1
1	C	24	ARG	3.0
1	B	225	PHE	3.0
1	A	46	LEU	2.9
1	B	51	SER	2.9
1	C	198	CYS	2.9
1	C	256	GLY	2.9
1	C	421	GLY	2.9
1	B	11	ASP	2.9
1	C	88	SER	2.8
1	B	2	PHE	2.8
1	B	40	GLY	2.8
1	C	365	VAL	2.8
1	C	5	GLU	2.8
1	B	408	TYR	2.8
1	B	6	PRO	2.8
1	A	137	GLU	2.8
1	A	402	VAL	2.7
1	B	16	ASP	2.7
1	C	409	GLY	2.6
1	C	173	PHE	2.6
1	A	442	PRO	2.6
1	B	23	LYS	2.6
1	A	168	GLU	2.6
1	C	18	LEU	2.6
1	A	412	LEU	2.5
1	C	201	VAL	2.5
1	A	432	VAL	2.5
1	C	86	ASN	2.5
1	B	193	GLN	2.5
1	B	194	PHE	2.5
1	B	419	LEU	2.5
1	C	415	PHE	2.4
1	B	416	LYS	2.4
1	C	191	TYR	2.4

Continued on next page...

Continued from previous page...

Mol	Chain	Res	Type	RSRZ
1	A	164	ASP	2.4
1	C	189	ILE	2.4
1	C	302	LEU	2.4
1	B	165	ALA	2.4
1	A	293	PHE	2.4
1	B	200	GLU	2.4
1	C	252	LYS	2.4
1	C	6	PRO	2.4
1	A	206	PHE	2.4
1	B	171	LEU	2.4
1	A	420	PRO	2.4
1	B	436	ALA	2.4
1	A	365	VAL	2.4
1	C	220	ILE	2.4
1	C	65	GLY	2.4
1	B	410	LYS	2.3
1	A	174	LYS	2.3
1	A	2	PHE	2.3
1	C	164	ASP	2.3
1	B	202	ASN	2.3
1	B	196	GLN	2.3
1	A	27	GLU	2.3
1	A	364	CYS	2.3
1	C	264	ALA	2.3
1	A	163	LEU	2.3
1	A	205	LEU	2.3
1	B	82	LEU	2.3
1	C	408	TYR	2.2
1	C	91	GLU	2.2
1	A	141	VAL	2.2
1	A	441	PHE	2.2
1	C	359	PRO	2.2
1	B	435	TRP	2.2
1	C	279	ALA	2.2
1	C	125	CYS	2.2
1	B	421	GLY	2.2
1	C	3	ASN	2.2
1	C	402	VAL	2.2
1	C	218	CYS	2.2
1	C	28	THR	2.2
1	C	436	ALA	2.2
1	B	404	LEU	2.2

Continued on next page...

Continued from previous page...

Mol	Chain	Res	Type	RSRZ
1	C	410	LYS	2.1
1	B	160	TYR	2.1
1	B	224	PRO	2.1
1	A	116	LYS	2.1
1	A	283	CYS	2.1
1	B	87	VAL	2.1
1	C	165	ALA	2.1
1	B	29	ILE	2.1
1	C	405	GLN	2.1
1	C	265	VAL	2.1
1	A	178	ILE	2.0
1	B	168	GLU	2.0
1	C	14	LEU	2.0
1	B	409	GLY	2.0
1	B	93	GLY	2.0
1	B	120	MET	2.0
1	C	192	GLN	2.0
1	C	84	ALA	2.0

6.2 Non-standard residues in protein, DNA, RNA chains [i](#)

There are no non-standard protein/DNA/RNA residues in this entry.

6.3 Carbohydrates [i](#)

There are no carbohydrates in this entry.

6.4 Ligands [i](#)

In the following table, the Atoms column lists the number of modelled atoms in the group and the number defined in the chemical component dictionary. LLDF column lists the quality of electron density of the group with respect to its neighbouring residues in protein, DNA or RNA chains. The B-factors column lists the minimum, median, 95th percentile and maximum values of B factors of atoms in the group. The column labelled 'Q < 0.9' lists the number of atoms with occupancy less than 0.9.

Mol	Type	Chain	Res	Atoms	RSCC	RSR	LLDF	B-factors(Å ²)	Q<0.9
3	G57	C	502	36/36	0.86	0.21	0.57	19,23,30,33	0
2	PLG	C	501	20/20	0.92	0.21	0.54	18,21,22,22	0
2	PLG	A	501	20/20	0.89	0.17	0.26	19,21,22,23	0

Continued on next page...

Continued from previous page...

Mol	Type	Chain	Res	Atoms	RSCC	RSR	LLDF	B-factors(\AA^2)	Q<0.9
3	G57	A	502	36/36	0.87	0.19	0.18	20,23,30,34	0
3	G57	B	502	36/36	0.86	0.18	-0.24	20,22,28,31	0
2	PLG	B	501	20/20	0.94	0.16	-0.36	17,21,22,22	0
4	CL	A	503	1/1	0.87	0.13	-1.23	29,29,29,29	0
4	CL	C	503	1/1	0.92	0.12	-	13,13,13,13	1

6.5 Other polymers [i](#)

There are no such residues in this entry.