



Full wwPDB X-ray Structure Validation Report ⓘ

Oct 24, 2017 – 03:27 PM EDT

PDB ID : 3GYU
Title : Nuclear receptor DAF-12 from parasitic nematode *Strongyloides stercoralis* in complex with its physiological ligand dafachronic acid delta 7
Authors : Zhou, X.E.; Wang, Z.; Suino-Powell, K.; Motola, D.L.; Conneely, A.; Ogata, C.; Sharma, K.K.; Auchus, R.J.; Kliewer, S.A.; Xu, H.E.; Mangelsdorf, D.J.
Deposited on : unknown
Resolution : 2.40 Å(reported)

This is a Full wwPDB X-ray Structure Validation Report for a publicly released PDB entry.

We welcome your comments at validation@mail.wwpdb.org

A user guide is available at

<http://wwpdb.org/validation/2016/XrayValidationReportHelp>

with specific help available everywhere you see the ⓘ symbol.

The following versions of software and data (see [references ⓘ](#)) were used in the production of this report:

MolProbity : 4.02b-467
Mogul : 1.7.2 (RC1), CSD as538be (2017)
Xtriage (Phenix) : 1.9-1692
EDS : rb-20030345
Percentile statistics : 20161228.v01 (using entries in the PDB archive December 28th 2016)
Refmac : 5.8.0135
CCP4 : 6.5.0
Ideal geometry (proteins) : Engh & Huber (2001)
Ideal geometry (DNA, RNA) : Parkinson et al. (1996)
Validation Pipeline (wwPDB-VP) : rb-20030345

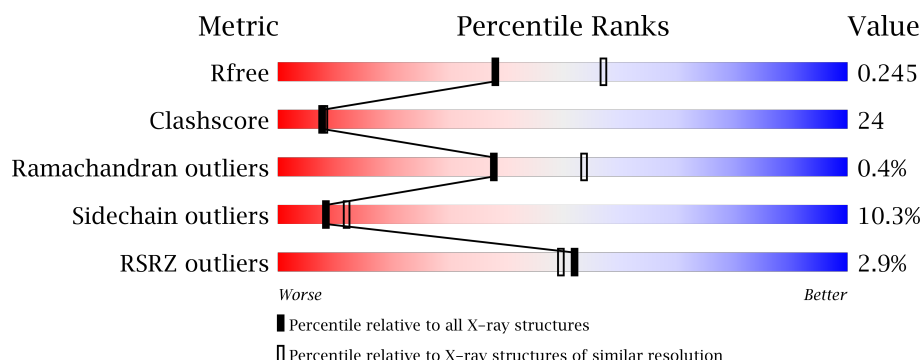
1 Overall quality at a glance

The following experimental techniques were used to determine the structure:

X-RAY DIFFRACTION

The reported resolution of this entry is 2.40 Å.

Percentile scores (ranging between 0-100) for global validation metrics of the entry are shown in the following graphic. The table shows the number of entries on which the scores are based.



Metric	Whole archive (#Entries)	Similar resolution (#Entries, resolution range(Å))
R_{free}	100719	3166 (2.40-2.40)
Clashscore	112137	3674 (2.40-2.40)
Ramachandran outliers	110173	3616 (2.40-2.40)
Sidechain outliers	110143	3617 (2.40-2.40)
RSRZ outliers	101464	3195 (2.40-2.40)

The table below summarises the geometric issues observed across the polymeric chains and their fit to the electron density. The red, orange, yellow and green segments on the lower bar indicate the fraction of residues that contain outliers for ≥ 3 , 2, 1 and 0 types of geometric quality criteria. A grey segment represents the fraction of residues that are not modelled. The numeric value for each fraction is indicated below the corresponding segment, with a dot representing fractions $\leq 5\%$. The upper red bar (where present) indicates the fraction of residues that have poor fit to the electron density. The numeric value is given above the bar.

Mol	Chain	Length	Quality of chain
1	A	244	<div> <div>3%</div> <div>57%</div> <div>35%</div> <div>7%</div> </div>
2	B	13	<div> <div>54%</div> <div>23%</div> <div>23%</div> </div>

2 Entry composition

There are 4 unique types of molecules in this entry. The entry contains 2193 atoms, of which 0 are hydrogens and 0 are deuteriums.

In the tables below, the ZeroOcc column contains the number of atoms modelled with zero occupancy, the AltConf column contains the number of residues with at least one atom in alternate conformation and the Trace column contains the number of residues modelled with at most 2 atoms.

- Molecule 1 is a protein called Nuclear hormone receptor of the steroid/thyroid hormone receptors superfamily.

Mol	Chain	Residues	Atoms						ZeroOcc	AltConf	Trace
1	A	242	Total	C	N	O	S	Se	0	0	0
			1941	1231	336	365	1	8			

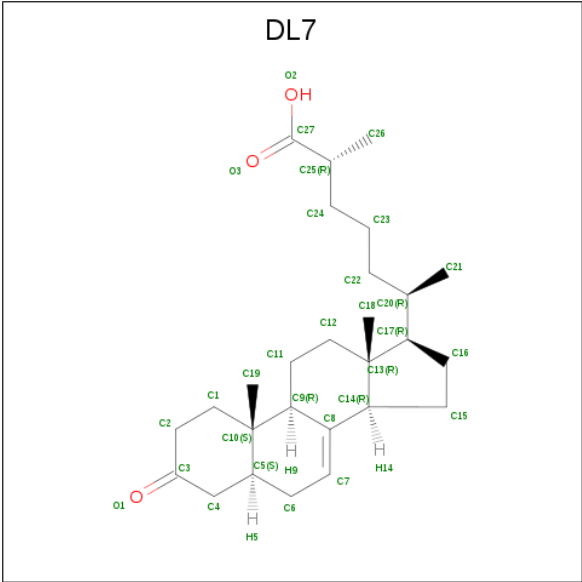
There are 2 discrepancies between the modelled and reference sequences:

Chain	Residue	Modelled	Actual	Comment	Reference
A	510	GLY	-	EXPRESSION TAG	UNP Q9XZJ5
A	511	SER	-	EXPRESSION TAG	UNP Q9XZJ5

- Molecule 2 is a protein called SRC1.

Mol	Chain	Residues	Atoms				ZeroOcc	AltConf	Trace
2	B	10	Total	C	N	O	0	0	0
			81	52	13	16			

- Molecule 3 is (5beta,14beta,17alpha,25R)-3-oxocholest-7-en-26-oic acid (three-letter code: DL7) (formula: C₂₇H₄₂O₃).



Mol	Chain	Residues	Atoms			ZeroOcc	AltConf
3	A	1	Total	C	O	0	0
			30	27	3		

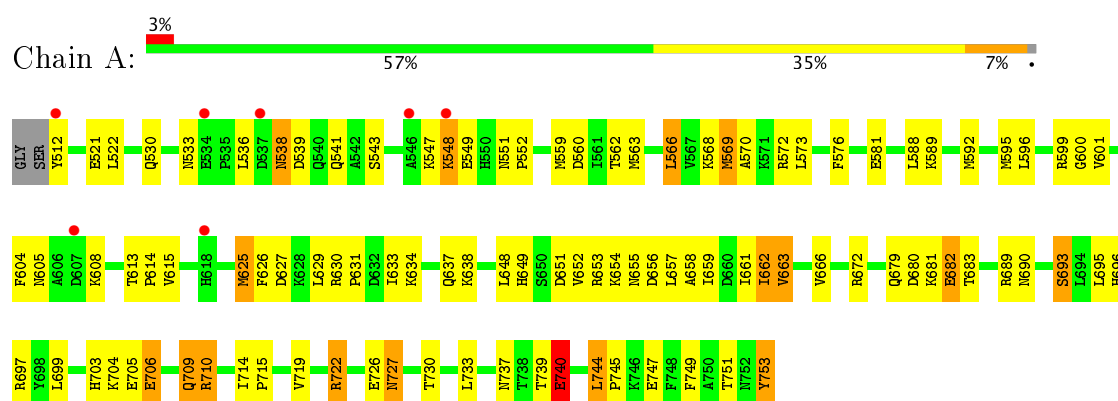
- Molecule 4 is water.

Mol	Chain	Residues	Atoms		ZeroOcc	AltConf
4	A	138	Total	O	0	0
			138	138		
4	B	3	Total	O	0	0
			3	3		

3 Residue-property plots [i](#)

These plots are drawn for all protein, RNA and DNA chains in the entry. The first graphic for a chain summarises the proportions of the various outlier classes displayed in the second graphic. The second graphic shows the sequence view annotated by issues in geometry and electron density. Residues are color-coded according to the number of geometric quality criteria for which they contain at least one outlier: green = 0, yellow = 1, orange = 2 and red = 3 or more. A red dot above a residue indicates a poor fit to the electron density ($RSRZ > 2$). Stretches of 2 or more consecutive residues without any outlier are shown as a green connector. Residues present in the sample, but not in the model, are shown in grey.

- Molecule 1: Nuclear hormone receptor of the steroid/thyroid hormone receptors superfamily



- Molecule 2: SRC1



4 Data and refinement statistics

Property	Value	Source
Space group	P 65	Depositor
Cell constants a, b, c, α , β , γ	120.95Å 120.95Å 40.76Å 90.00° 90.00° 120.00°	Depositor
Resolution (Å)	39.59 – 2.40 29.05 – 2.40	Depositor EDS
% Data completeness (in resolution range)	99.7 (39.59-2.40) 99.8 (29.05-2.40)	Depositor EDS
R_{merge}	0.12	Depositor
R_{sym}	(Not available)	Depositor
$\langle I/\sigma(I) \rangle$ ¹	3.73 (at 2.39Å)	Xtriage
Refinement program	REFMAC 5.5.0066	Depositor
R, R_{free}	0.208 , 0.255 0.209 , 0.245	Depositor DCC
R_{free} test set	963 reflections (7.65%)	DCC
Wilson B-factor (Å ²)	33.9	Xtriage
Anisotropy	0.033	Xtriage
Bulk solvent k_{sol} (e/Å ³), B_{sol} (Å ²)	0.33 , 48.7	EDS
L-test for twinning ²	$\langle L \rangle = 0.49$, $\langle L^2 \rangle = 0.33$	Xtriage
Estimated twinning fraction	0.037 for h,-h-k,-l	Xtriage
F_o, F_c correlation	0.94	EDS
Total number of atoms	2193	wwPDB-VP
Average B, all atoms (Å ²)	50.0	wwPDB-VP

Xtriage's analysis on translational NCS is as follows: *The largest off-origin peak in the Patterson function is 4.97% of the height of the origin peak. No significant pseudotranslation is detected.*

¹Intensities estimated from amplitudes.

²Theoretical values of $\langle |L| \rangle$, $\langle L^2 \rangle$ for acentric reflections are 0.5, 0.333 respectively for untwinned datasets, and 0.375, 0.2 for perfectly twinned datasets.

5 Model quality [i](#)

5.1 Standard geometry [i](#)

Bond lengths and bond angles in the following residue types are not validated in this section: DL7

The Z score for a bond length (or angle) is the number of standard deviations the observed value is removed from the expected value. A bond length (or angle) with $|Z| > 5$ is considered an outlier worth inspection. RMSZ is the root-mean-square of all Z scores of the bond lengths (or angles).

Mol	Chain	Bond lengths		Bond angles	
		RMSZ	# $ Z > 5$	RMSZ	# $ Z > 5$
1	A	1.22	6/1966 (0.3%)	0.93	4/2631 (0.2%)
2	B	1.06	0/80	0.75	0/106
All	All	1.22	6/2046 (0.3%)	0.92	4/2737 (0.1%)

All (6) bond length outliers are listed below:

Mol	Chain	Res	Type	Atoms	Z	Observed(Å)	Ideal(Å)
1	A	693	SER	CB-OG	-6.38	1.33	1.42
1	A	666	VAL	CB-CG2	-6.16	1.40	1.52
1	A	753	TYR	CD1-CE1	-6.12	1.30	1.39
1	A	682	GLU	CG-CD	-5.91	1.43	1.51
1	A	663	VAL	CB-CG2	5.52	1.64	1.52
1	A	740	GLU	CG-CD	5.47	1.60	1.51

All (4) bond angle outliers are listed below:

Mol	Chain	Res	Type	Atoms	Z	Observed(°)	Ideal(°)
1	A	560	ASP	CB-CG-OD1	6.11	123.80	118.30
1	A	581	GLU	OE1-CD-OE2	-5.89	116.24	123.30
1	A	672	ARG	NE-CZ-NH2	-5.53	117.53	120.30
1	A	680	ASP	CB-CG-OD2	5.04	122.83	118.30

There are no chirality outliers.

There are no planarity outliers.

5.2 Too-close contacts [i](#)

In the following table, the Non-H and H(model) columns list the number of non-hydrogen atoms and hydrogen atoms in the chain respectively. The H(added) column lists the number of hydrogen

atoms added and optimized by MolProbity. The Clashes column lists the number of clashes within the asymmetric unit, whereas Symm-Clashes lists symmetry related clashes.

Mol	Chain	Non-H	H(model)	H(added)	Clashes	Symm-Clashes
1	A	1941	0	1958	97	0
2	B	81	0	90	4	0
3	A	30	0	41	2	0
4	A	138	0	0	10	0
4	B	3	0	0	0	0
All	All	2193	0	2089	100	0

The all-atom clashscore is defined as the number of clashes found per 1000 atoms (including hydrogen atoms). The all-atom clashscore for this structure is 24.

All (100) close contacts within the same asymmetric unit are listed below, sorted by their clash magnitude.

Atom-1	Atom-2	Interatomic distance (Å)	Clash overlap (Å)
1:A:589:LYS:HE3	4:A:50:HOH:O	1.61	1.00
1:A:601:VAL:HG11	1:A:648:LEU:HD12	1.41	0.98
1:A:751:THR:HG22	1:A:753:TYR:H	1.28	0.97
1:A:569:MSE:HE1	1:A:573:LEU:HD22	1.50	0.93
1:A:538:ASN:HD22	1:A:539:ASP:H	1.15	0.92
1:A:533:ASN:HD21	1:A:599:ARG:HH12	1.10	0.89
1:A:714:ILE:HG13	1:A:715:PRO:HD3	1.56	0.88
1:A:705:GLU:HG2	1:A:706:GLU:HG3	1.58	0.86
1:A:566:LEU:HD11	1:A:595:MSE:SE	2.30	0.82
1:A:655:ASN:HD22	1:A:658:ALA:H	1.26	0.79
1:A:559:MSE:HE2	1:A:596:LEU:HD13	1.62	0.79
1:A:538:ASN:HD22	1:A:539:ASP:N	1.82	0.78
1:A:709:GLN:NE2	4:A:84:HOH:O	2.21	0.74
1:A:569:MSE:HE2	1:A:569:MSE:O	1.89	0.72
1:A:662:ILE:HG13	1:A:663:VAL:N	2.06	0.71
1:A:538:ASN:ND2	1:A:539:ASP:H	1.88	0.70
1:A:739:THR:HG22	1:A:753:TYR:HB3	1.75	0.68
1:A:533:ASN:ND2	1:A:599:ARG:HH12	1.89	0.68
1:A:740:GLU:H	1:A:740:GLU:CD	1.97	0.68
1:A:569:MSE:CE	1:A:573:LEU:HD22	2.23	0.67
1:A:693:SER:HB3	1:A:697:ARG:HH12	1.58	0.67
1:A:722:ARG:NH2	1:A:726:GLU:HG3	2.11	0.66
1:A:569:MSE:HE2	1:A:570:ALA:HA	1.77	0.66
1:A:651:ASP:OD1	1:A:710:ARG:NH1	2.29	0.66
1:A:727:ASN:C	1:A:727:ASN:HD22	2.00	0.65
1:A:681:LYS:HB2	1:A:681:LYS:NZ	2.11	0.65

Continued on next page...

Continued from previous page...

Atom-1	Atom-2	Interatomic distance (Å)	Clash overlap (Å)
1:A:714:ILE:C	1:A:714:ILE:HD12	2.16	0.64
1:A:634:LYS:O	1:A:638:LYS:HG3	1.98	0.63
1:A:706:GLU:HG2	4:A:124:HOH:O	1.97	0.62
1:A:569:MSE:HE2	1:A:569:MSE:C	2.21	0.61
1:A:547:LYS:HG2	1:A:549:GLU:O	2.01	0.60
1:A:679:GLN:O	1:A:683:THR:HG23	2.01	0.60
2:B:742:LYS:O	2:B:743:SER:HB3	2.00	0.60
1:A:573:LEU:HD23	1:A:576:PHE:HB2	1.83	0.59
1:A:568:LYS:HE3	1:A:572:ARG:NH2	2.19	0.58
1:A:627:ASP:HA	1:A:634:LYS:HE3	1.86	0.57
1:A:627:ASP:OD2	1:A:634:LYS:HE3	2.03	0.57
1:A:722:ARG:HH21	1:A:726:GLU:HG3	1.70	0.57
1:A:737:ASN:OD1	1:A:739:THR:HG23	2.05	0.57
1:A:693:SER:HB3	1:A:697:ARG:NH1	2.19	0.56
1:A:681:LYS:HB2	1:A:681:LYS:HZ2	1.71	0.56
1:A:659:ILE:C	1:A:659:ILE:HD12	2.26	0.56
2:B:742:LYS:N	2:B:742:LYS:HZ2	2.04	0.55
1:A:747:GLU:OE2	2:B:744:LEU:HB2	2.06	0.55
1:A:536:LEU:HD13	1:A:541:GLN:HB3	1.88	0.55
1:A:637:GLN:OE1	1:A:727:ASN:ND2	2.39	0.55
1:A:744:LEU:HB3	1:A:745:PRO:HD3	1.88	0.55
1:A:739:THR:CG2	1:A:753:TYR:HB3	2.37	0.54
1:A:714:ILE:N	1:A:715:PRO:CD	2.70	0.53
1:A:538:ASN:ND2	1:A:539:ASP:N	2.53	0.53
1:A:714:ILE:HG13	1:A:715:PRO:CD	2.35	0.51
1:A:751:THR:HG22	1:A:753:TYR:N	2.11	0.51
1:A:657:LEU:O	1:A:661:ILE:HG12	2.11	0.50
1:A:690:ASN:HB2	4:A:43:HOH:O	2.12	0.50
1:A:559:MSE:HE1	1:A:749:PHE:CZ	2.47	0.50
1:A:689:ARG:NH1	4:A:18:HOH:O	2.44	0.49
1:A:562:THR:CG2	1:A:596:LEU:HD23	2.42	0.49
1:A:730:THR:HB	1:A:733:LEU:HD12	1.93	0.48
2:B:742:LYS:O	2:B:743:SER:CB	2.62	0.48
1:A:654:LYS:HE2	1:A:654:LYS:HA	1.96	0.48
1:A:533:ASN:HA	1:A:615:VAL:HG12	1.95	0.48
1:A:661:ILE:HG21	1:A:695:LEU:HB2	1.95	0.48
1:A:539:ASP:O	1:A:543:SER:HB2	2.15	0.47
1:A:548:LYS:N	1:A:548:LYS:HD3	2.29	0.47
1:A:600:GLY:O	1:A:604:PHE:HB2	2.13	0.47
1:A:559:MSE:HE3	3:A:200:DL7:H19B	1.96	0.47
1:A:613:THR:OG1	1:A:615:VAL:HG22	2.14	0.47

Continued on next page...

Continued from previous page...

Atom-1	Atom-2	Interatomic distance (Å)	Clash overlap (Å)
1:A:655:ASN:ND2	1:A:658:ALA:H	2.05	0.46
1:A:627:ASP:HA	1:A:634:LYS:CE	2.45	0.46
1:A:705:GLU:HB3	4:A:36:HOH:O	2.14	0.46
1:A:559:MSE:HE2	1:A:596:LEU:CD1	2.40	0.45
1:A:568:LYS:NZ	1:A:572:ARG:HH21	2.14	0.45
1:A:630:ARG:HA	1:A:631:PRO:HD3	1.79	0.45
1:A:566:LEU:HD11	1:A:595:MSE:CE	2.46	0.45
1:A:548:LYS:HD3	1:A:548:LYS:H	1.81	0.45
1:A:551:ASN:HB2	1:A:552:PRO:CD	2.47	0.45
1:A:613:THR:HB	3:A:200:DL7:H24A	2.00	0.44
1:A:605:ASN:ND2	1:A:608:LYS:HD2	2.33	0.44
1:A:715:PRO:O	1:A:719:VAL:HG23	2.16	0.44
1:A:551:ASN:HB2	1:A:552:PRO:HD2	2.00	0.43
1:A:533:ASN:HD21	1:A:599:ARG:NH1	1.94	0.43
1:A:538:ASN:HB3	1:A:541:GLN:HB2	2.01	0.43
1:A:562:THR:HG21	1:A:596:LEU:HD23	1.99	0.42
1:A:751:THR:CG2	1:A:753:TYR:H	2.14	0.42
1:A:569:MSE:HE2	1:A:570:ALA:CA	2.44	0.42
1:A:629:LEU:O	1:A:630:ARG:C	2.55	0.42
1:A:709:GLN:HE21	1:A:709:GLN:HB2	1.50	0.42
1:A:627:ASP:OD2	1:A:634:LYS:CE	2.67	0.42
1:A:744:LEU:CB	1:A:745:PRO:HD3	2.50	0.42
1:A:613:THR:HA	1:A:614:PRO:HD3	1.90	0.41
1:A:658:ALA:O	1:A:662:ILE:HG23	2.21	0.41
1:A:703:HIS:HE1	4:A:82:HOH:O	2.03	0.41
1:A:592:MSE:HA	1:A:595:MSE:HE3	2.02	0.41
1:A:588:LEU:HA	1:A:588:LEU:HD23	1.83	0.41
1:A:653:ARG:HD2	4:A:20:HOH:O	2.19	0.41
1:A:589:LYS:CE	4:A:50:HOH:O	2.41	0.41
1:A:625:MSE:HE3	1:A:626:PHE:CE1	2.56	0.41
1:A:563:MSE:CE	1:A:596:LEU:HD11	2.52	0.40
1:A:710:ARG:NE	4:A:84:HOH:O	2.53	0.40
1:A:704:LYS:HG3	1:A:705:GLU:N	2.37	0.40

There are no symmetry-related clashes.

5.3 Torsion angles [i](#)

5.3.1 Protein backbone [i](#)

In the following table, the Percentiles column shows the percent Ramachandran outliers of the chain as a percentile score with respect to all X-ray entries followed by that with respect to entries of similar resolution.

The Analysed column shows the number of residues for which the backbone conformation was analysed, and the total number of residues.

Mol	Chain	Analysed	Favoured	Allowed	Outliers	Percentiles	
1	A	240/244 (98%)	230 (96%)	9 (4%)	1 (0%)	38	54
2	B	8/13 (62%)	6 (75%)	2 (25%)	0	100	100
All	All	248/257 (96%)	236 (95%)	11 (4%)	1 (0%)	38	54

All (1) Ramachandran outliers are listed below:

Mol	Chain	Res	Type
1	A	649	HIS

5.3.2 Protein sidechains [i](#)

In the following table, the Percentiles column shows the percent sidechain outliers of the chain as a percentile score with respect to all X-ray entries followed by that with respect to entries of similar resolution.

The Analysed column shows the number of residues for which the sidechain conformation was analysed, and the total number of residues.

Mol	Chain	Analysed	Rotameric	Outliers	Percentiles	
1	A	214/207 (103%)	191 (89%)	23 (11%)	8	10
2	B	10/12 (83%)	10 (100%)	0	100	100
All	All	224/219 (102%)	201 (90%)	23 (10%)	8	12

All (23) residues with a non-rotameric sidechain are listed below:

Mol	Chain	Res	Type
1	A	512	TYR
1	A	521	GLU
1	A	522	LEU
1	A	530	GLN
1	A	538	ASN

Continued on next page...

Continued from previous page...

Mol	Chain	Res	Type
1	A	548	LYS
1	A	566	LEU
1	A	569	MSE
1	A	625	MSE
1	A	633	ILE
1	A	652	VAL
1	A	656	ASP
1	A	662	ILE
1	A	682	GLU
1	A	696	HIS
1	A	699	LEU
1	A	706	GLU
1	A	709	GLN
1	A	710	ARG
1	A	722	ARG
1	A	727	ASN
1	A	740	GLU
1	A	744	LEU

Some sidechains can be flipped to improve hydrogen bonding and reduce clashes. All (13) such sidechains are listed below:

Mol	Chain	Res	Type
1	A	533	ASN
1	A	538	ASN
1	A	541	GLN
1	A	577	ASN
1	A	637	GLN
1	A	646	ASN
1	A	649	HIS
1	A	655	ASN
1	A	679	GLN
1	A	690	ASN
1	A	696	HIS
1	A	703	HIS
1	A	727	ASN

5.3.3 RNA ⓘ

There are no RNA molecules in this entry.

5.4 Non-standard residues in protein, DNA, RNA chains ⓘ

There are no non-standard protein/DNA/RNA residues in this entry.

5.5 Carbohydrates ⓘ

There are no carbohydrates in this entry.

5.6 Ligand geometry ⓘ

1 ligand is modelled in this entry.

In the following table, the Counts columns list the number of bonds (or angles) for which Mogul statistics could be retrieved, the number of bonds (or angles) that are observed in the model and the number of bonds (or angles) that are defined in the Chemical Component Dictionary. The Link column lists molecule types, if any, to which the group is linked. The Z score for a bond length (or angle) is the number of standard deviations the observed value is removed from the expected value. A bond length (or angle) with $|Z| > 2$ is considered an outlier worth inspection. RMSZ is the root-mean-square of all Z scores of the bond lengths (or angles).

Mol	Type	Chain	Res	Link	Bond lengths			Bond angles		
					Counts	RMSZ	# $ Z > 2$	Counts	RMSZ	# $ Z > 2$
3	DL7	A	200	-	30,33,33	0.96	2 (6%)	46,51,51	1.93	16 (34%)

In the following table, the Chirals column lists the number of chiral outliers, the number of chiral centers analysed, the number of these observed in the model and the number defined in the Chemical Component Dictionary. Similar counts are reported in the Torsion and Rings columns. '-' means no outliers of that kind were identified.

Mol	Type	Chain	Res	Link	Chirals	Torsions	Rings
3	DL7	A	200	-	-	0/10/72/72	0/4/4/4

All (2) bond length outliers are listed below:

Mol	Chain	Res	Type	Atoms	Z	Observed(Å)	Ideal(Å)
3	A	200	DL7	C13-C14	-2.67	1.51	1.56
3	A	200	DL7	C6-C5	2.56	1.58	1.52

All (16) bond angle outliers are listed below:

Mol	Chain	Res	Type	Atoms	Z	Observed(°)	Ideal(°)
3	A	200	DL7	C5-C6-C7	-4.34	104.01	111.43
3	A	200	DL7	C23-C22-C20	-3.65	104.00	115.00

Continued on next page...

Continued from previous page...

Mol	Chain	Res	Type	Atoms	Z	Observed(°)	Ideal(°)
3	A	200	DL7	C21-C20-C22	-3.59	104.70	110.35
3	A	200	DL7	C9-C8-C7	-2.65	112.74	120.43
3	A	200	DL7	C24-C25-C27	-2.64	108.23	112.63
3	A	200	DL7	C16-C15-C14	-2.51	101.24	105.38
3	A	200	DL7	C18-C13-C14	-2.37	106.25	110.14
3	A	200	DL7	C23-C24-C25	-2.11	110.30	114.67
3	A	200	DL7	C22-C20-C17	2.23	114.94	110.26
3	A	200	DL7	C18-C13-C12	2.26	114.29	110.59
3	A	200	DL7	C4-C5-C10	2.33	115.07	112.86
3	A	200	DL7	C10-C9-C8	2.38	117.05	112.33
3	A	200	DL7	C21-C20-C17	2.40	116.71	112.95
3	A	200	DL7	C15-C16-C17	2.50	110.12	105.12
3	A	200	DL7	C14-C8-C7	2.57	129.53	123.90
3	A	200	DL7	C6-C7-C8	5.70	137.59	121.80

There are no chirality outliers.

There are no torsion outliers.

There are no ring outliers.

1 monomer is involved in 2 short contacts:

Mol	Chain	Res	Type	Clashes	Symm-Clashes
3	A	200	DL7	2	0

5.7 Other polymers [i](#)

There are no such residues in this entry.

5.8 Polymer linkage issues [i](#)

There are no chain breaks in this entry.

6 Fit of model and data [i](#)

6.1 Protein, DNA and RNA chains [i](#)

In the following table, the column labelled ‘#RSRZ> 2’ contains the number (and percentage) of RSRZ outliers, followed by percent RSRZ outliers for the chain as percentile scores relative to all X-ray entries and entries of similar resolution. The OWAB column contains the minimum, median, 95th percentile and maximum values of the occupancy-weighted average B-factor per residue. The column labelled ‘Q< 0.9’ lists the number of (and percentage) of residues with an average occupancy less than 0.9.

Mol	Chain	Analysed	<RSRZ>	#RSRZ>2	OWAB(Å ²)	Q<0.9
1	A	234/244 (95%)	0.02	7 (2%) 51 49	29, 45, 83, 95	0
2	B	10/13 (76%)	0.06	0 100 100	46, 55, 64, 69	0
All	All	244/257 (94%)	0.02	7 (2%) 52 50	29, 45, 83, 95	0

All (7) RSRZ outliers are listed below:

Mol	Chain	Res	Type	RSRZ
1	A	618	HIS	4.2
1	A	537	ASP	3.6
1	A	546	ALA	3.0
1	A	548	LYS	2.6
1	A	534	GLU	2.3
1	A	512	TYR	2.1
1	A	607	ASP	2.1

6.2 Non-standard residues in protein, DNA, RNA chains [i](#)

There are no non-standard protein/DNA/RNA residues in this entry.

6.3 Carbohydrates [i](#)

There are no carbohydrates in this entry.

6.4 Ligands [i](#)

In the following table, the Atoms column lists the number of modelled atoms in the group and the number defined in the chemical component dictionary. LLDF column lists the quality of electron density of the group with respect to its neighbouring residues in protein, DNA or RNA chains. The B-factors column lists the minimum, median, 95th percentile and maximum values of B factors

of atoms in the group. The column labelled 'Q< 0.9' lists the number of atoms with occupancy less than 0.9.

Mol	Type	Chain	Res	Atoms	RSCC	RSR	LLDF	B-factors(\AA^2)	Q<0.9
3	DL7	A	200	30/30	0.90	0.21	1.05	33,39,72,79	0

6.5 Other polymers [i](#)

There are no such residues in this entry.