



Full wwPDB X-ray Structure Validation Report ⓘ

Nov 27, 2017 – 10:52 PM EST

PDB ID : 5GZ6
Title : Structure of D-amino acid dehydrogenase in complex with NADPH and 2-keto-6-aminocaproic acid
Authors : Sakuraba, H.; Seto, T.; Hayashi, J.; Akita, H.; Yoneda, K.; Ohshima, T.
Deposited on : unknown
Resolution : 1.74 Å(reported)

This is a Full wwPDB X-ray Structure Validation Report for a publicly released PDB entry.

We welcome your comments at validation@mail.wwpdb.org

A user guide is available at

<http://wwpdb.org/validation/2016/XrayValidationReportHelp>

with specific help available everywhere you see the ⓘ symbol.

The following versions of software and data (see [references ⓘ](#)) were used in the production of this report:

MolProbity : 4.02b-467
Mogul : 1.7.2 (RC1), CSD as538be (2017)
Xtriage (Phenix) : 1.9-1692
EDS : rb-20030345
Percentile statistics : 20161228.v01 (using entries in the PDB archive December 28th 2016)
Refmac : 5.8.0135
CCP4 : 6.5.0
Ideal geometry (proteins) : Engh & Huber (2001)
Ideal geometry (DNA, RNA) : Parkinson et al. (1996)
Validation Pipeline (wwPDB-VP) : rb-20030345

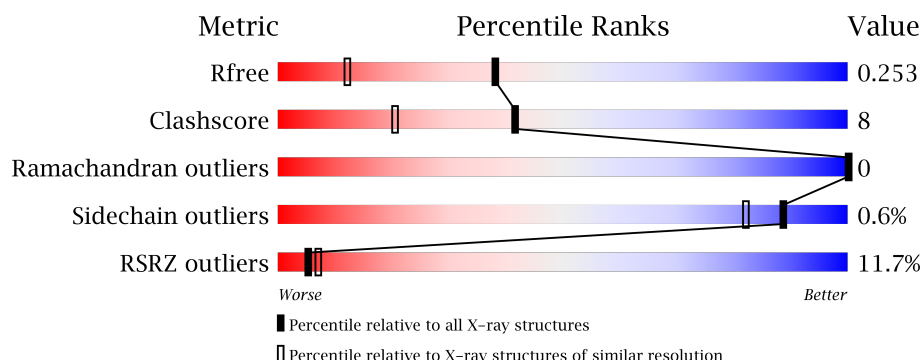
1 Overall quality at a glance

The following experimental techniques were used to determine the structure:

X-RAY DIFFRACTION

The reported resolution of this entry is 1.74 Å.

Percentile scores (ranging between 0-100) for global validation metrics of the entry are shown in the following graphic. The table shows the number of entries on which the scores are based.



Metric	Whole archive (#Entries)	Similar resolution (#Entries, resolution range(Å))
R_{free}	100719	2694 (1.76-1.72)
Clashscore	112137	2854 (1.76-1.72)
Ramachandran outliers	110173	2824 (1.76-1.72)
Sidechain outliers	110143	2824 (1.76-1.72)
RSRZ outliers	101464	2705 (1.76-1.72)

The table below summarises the geometric issues observed across the polymeric chains and their fit to the electron density. The red, orange, yellow and green segments on the lower bar indicate the fraction of residues that contain outliers for ≥ 3 , 2, 1 and 0 types of geometric quality criteria. A grey segment represents the fraction of residues that are not modelled. The numeric value for each fraction is indicated below the corresponding segment, with a dot representing fractions $\leq 5\%$. The upper red bar (where present) indicates the fraction of residues that have poor fit to the electron density. The numeric value is given above the bar.

Mol	Chain	Length	Quality of chain
1	A	326	<div> <div>11%</div> <div>86%</div> <div>11%</div> <div>•</div> </div>
1	B	326	<div> <div>11%</div> <div>80%</div> <div>16%</div> <div>••</div> </div>

The following table lists non-polymeric compounds, carbohydrate monomers and non-standard residues in protein, DNA, RNA chains that are outliers for geometric or electron-density-fit criteria:

Mol	Type	Chain	Res	Chirality	Geometry	Clashes	Electron density
5	ACT	B	3001	-	-	-	X

2 Entry composition

There are 6 unique types of molecules in this entry. The entry contains 5400 atoms, of which 0 are hydrogens and 0 are deuteriums.

In the tables below, the ZeroOcc column contains the number of atoms modelled with zero occupancy, the AltConf column contains the number of residues with at least one atom in alternate conformation and the Trace column contains the number of residues modelled with at most 2 atoms.

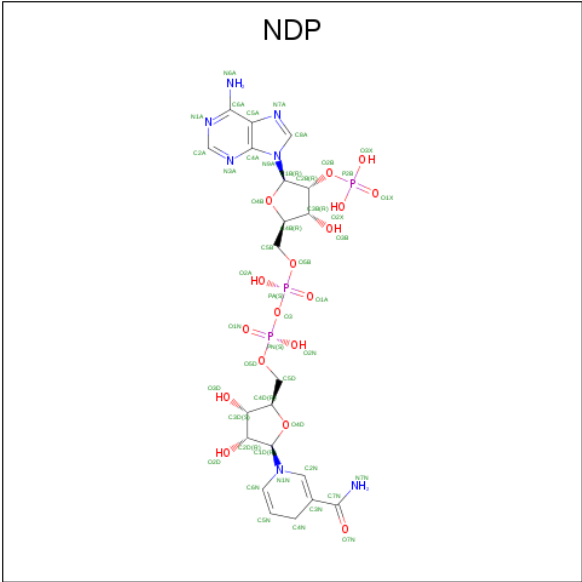
- Molecule 1 is a protein called Meso-diaminopimelate D-dehydrogenase.

Mol	Chain	Residues	Atoms					ZeroOcc	AltConf	Trace
1	A	318	Total	C	N	O	S	0	0	0
			2465	1563	422	472	8			
1	B	316	Total	C	N	O	S	0	1	0
			2466	1564	424	470	8			

There are 14 discrepancies between the modelled and reference sequences:

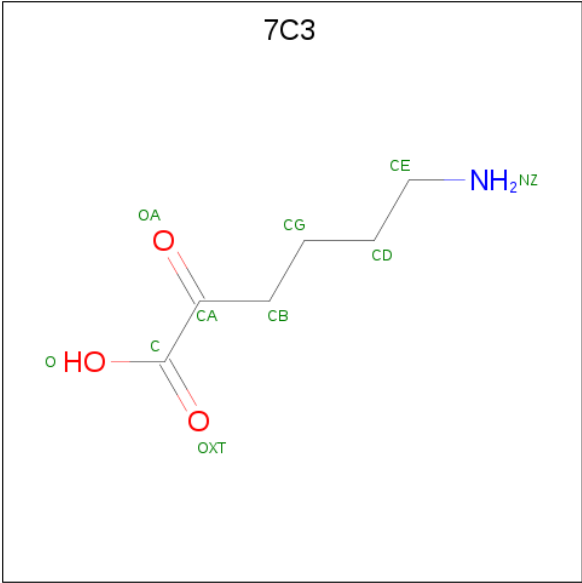
Chain	Residue	Modelled	Actual	Comment	Reference
A	94	ALA	ASP	engineered mutation	UNP G1UII1
A	154	LEU	GLN	engineered mutation	UNP G1UII1
A	158	GLY	ASP	engineered mutation	UNP G1UII1
A	173	ILE	THR	engineered mutation	UNP G1UII1
A	199	MET	ARG	engineered mutation	UNP G1UII1
A	224	PHE	TYR	engineered mutation	UNP G1UII1
A	249	ASN	HIS	engineered mutation	UNP G1UII1
B	94	ALA	ASP	engineered mutation	UNP G1UII1
B	154	LEU	GLN	engineered mutation	UNP G1UII1
B	158	GLY	ASP	engineered mutation	UNP G1UII1
B	173	ILE	THR	engineered mutation	UNP G1UII1
B	199	MET	ARG	engineered mutation	UNP G1UII1
B	224	PHE	TYR	engineered mutation	UNP G1UII1
B	249	ASN	HIS	engineered mutation	UNP G1UII1

- Molecule 2 is NADPH DIHYDRO-NICOTINAMIDE-ADENINE-DINUCLEOTIDE PHOSPHATE (three-letter code: NDP) (formula: C₂₁H₃₀N₇O₁₇P₃).



Mol	Chain	Residues	Atoms					ZeroOcc	AltConf
2	A	1	Total	C	N	O	P	0	0
			48	21	7	17	3		

- Molecule 3 is 6-azanyl-2-oxidanylidene-hexanoic acid (three-letter code: 7C3) (formula: C₆H₁₁NO₃).



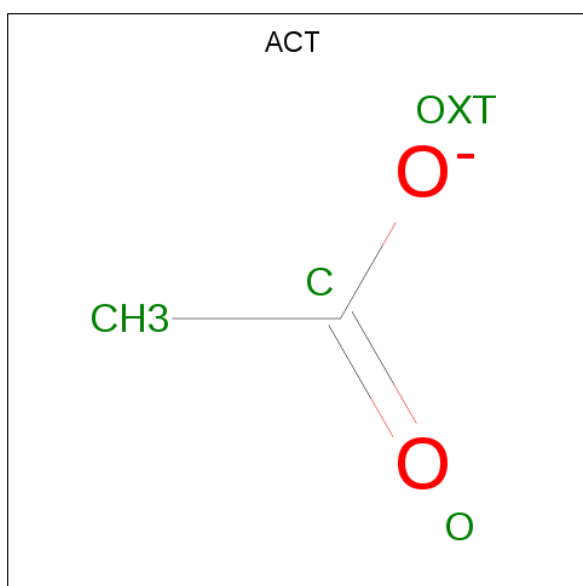
Mol	Chain	Residues	Atoms				ZeroOcc	AltConf
3	A	1	Total	C	N	O	0	0
			10	6	1	3		

- Molecule 4 is SULFATE ION (three-letter code: SO4) (formula: O₄S).



Mol	Chain	Residues	Atoms			ZeroOcc	AltConf
4	A	1	Total	O	S	0	0
			5	4	1		
4	B	1	Total	O	S	0	0
			5	4	1		

- Molecule 5 is ACETATE ION (three-letter code: ACT) (formula: $C_2H_3O_2$).



Mol	Chain	Residues	Atoms			ZeroOcc	AltConf
5	B	1	Total	C	O	0	0
			4	2	2		

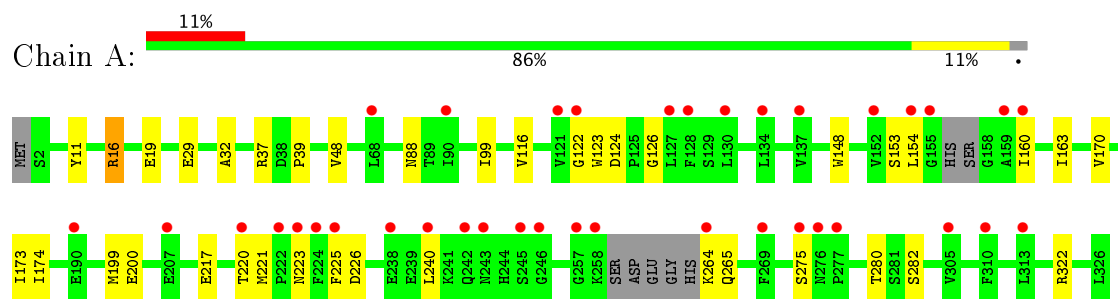
- Molecule 6 is water.

Mol	Chain	Residues	Atoms		ZeroOcc	AltConf
6	A	213	Total 213	O 213	0	0
6	B	184	Total 184	O 184	0	0

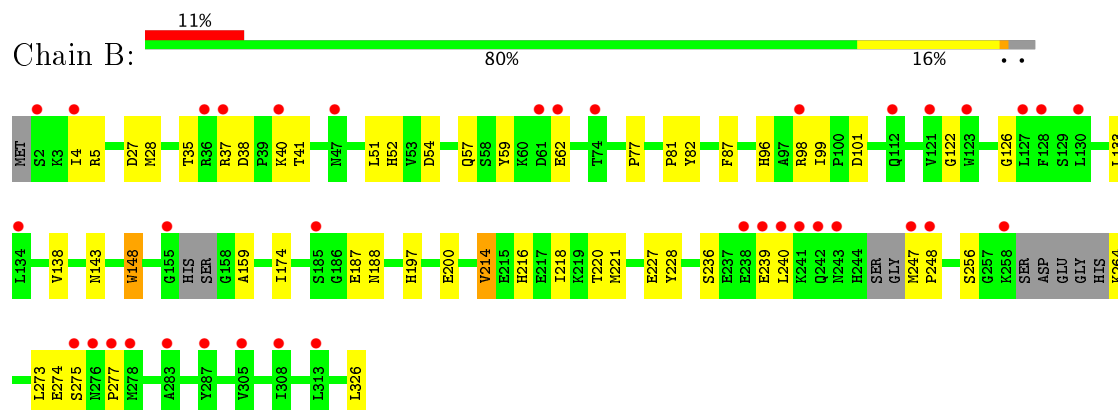
3 Residue-property plots [i](#)

These plots are drawn for all protein, RNA and DNA chains in the entry. The first graphic for a chain summarises the proportions of the various outlier classes displayed in the second graphic. The second graphic shows the sequence view annotated by issues in geometry and electron density. Residues are color-coded according to the number of geometric quality criteria for which they contain at least one outlier: green = 0, yellow = 1, orange = 2 and red = 3 or more. A red dot above a residue indicates a poor fit to the electron density ($RSRZ > 2$). Stretches of 2 or more consecutive residues without any outlier are shown as a green connector. Residues present in the sample, but not in the model, are shown in grey.

• Molecule 1: Meso-diaminopimelate D-dehydrogenase



• Molecule 1: Meso-diaminopimelate D-dehydrogenase



4 Data and refinement statistics

Property	Value	Source
Space group	P 21 21 21	Depositor
Cell constants a, b, c, α , β , γ	54.84Å 94.77Å 138.79Å 90.00° 90.00° 90.00°	Depositor
Resolution (Å)	50.00 – 1.74 30.80 – 1.74	Depositor EDS
% Data completeness (in resolution range)	99.6 (50.00-1.74) 99.7 (30.80-1.74)	Depositor EDS
R_{merge}	0.12	Depositor
R_{sym}	(Not available)	Depositor
$\langle I/\sigma(I) \rangle$ ¹	2.34 (at 1.74Å)	Xtriage
Refinement program	REFMAC 5.8.0135	Depositor
R, R_{free}	0.207 , 0.250 0.222 , 0.253	Depositor DCC
R_{free} test set	3778 reflections (5.32%)	DCC
Wilson B-factor (Å ²)	26.6	Xtriage
Anisotropy	0.186	Xtriage
Bulk solvent k_{sol} (e/Å ³), B_{sol} (Å ²)	0.36 , 42.8	EDS
L-test for twinning ²	$\langle L \rangle = 0.50$, $\langle L^2 \rangle = 0.34$	Xtriage
Estimated twinning fraction	No twinning to report.	Xtriage
F_o, F_c correlation	0.95	EDS
Total number of atoms	5400	wwPDB-VP
Average B, all atoms (Å ²)	35.0	wwPDB-VP

Xtriage's analysis on translational NCS is as follows: *The largest off-origin peak in the Patterson function is 4.88% of the height of the origin peak. No significant pseudotranslation is detected.*

¹Intensities estimated from amplitudes.

²Theoretical values of $\langle |L| \rangle$, $\langle L^2 \rangle$ for acentric reflections are 0.5, 0.333 respectively for untwinned datasets, and 0.375, 0.2 for perfectly twinned datasets.

5 Model quality [i](#)

5.1 Standard geometry [i](#)

Bond lengths and bond angles in the following residue types are not validated in this section: NDP, 7C3, SO4, ACT

The Z score for a bond length (or angle) is the number of standard deviations the observed value is removed from the expected value. A bond length (or angle) with $|Z| > 5$ is considered an outlier worth inspection. RMSZ is the root-mean-square of all Z scores of the bond lengths (or angles).

Mol	Chain	Bond lengths		Bond angles	
		RMSZ	$\# Z > 5$	RMSZ	$\# Z > 5$
1	A	1.09	2/2514 (0.1%)	0.98	2/3400 (0.1%)
1	B	1.00	3/2514 (0.1%)	0.96	1/3398 (0.0%)
All	All	1.05	5/5028 (0.1%)	0.97	3/6798 (0.0%)

All (5) bond length outliers are listed below:

Mol	Chain	Res	Type	Atoms	Z	Observed(Å)	Ideal(Å)
1	A	29	GLU	CD-OE1	5.79	1.32	1.25
1	B	187	GLU	CD-OE1	5.69	1.31	1.25
1	B	214	VAL	CB-CG1	-5.47	1.41	1.52
1	A	19	GLU	CD-OE2	-5.47	1.19	1.25
1	B	256	SER	CA-CB	5.06	1.60	1.52

All (3) bond angle outliers are listed below:

Mol	Chain	Res	Type	Atoms	Z	Observed(°)	Ideal(°)
1	B	27	ASP	CB-CG-OD1	-5.77	113.10	118.30
1	A	322	ARG	NE-CZ-NH1	5.76	123.18	120.30
1	A	16	ARG	NE-CZ-NH1	5.60	123.10	120.30

There are no chirality outliers.

There are no planarity outliers.

5.2 Too-close contacts [i](#)

In the following table, the Non-H and H(model) columns list the number of non-hydrogen atoms and hydrogen atoms in the chain respectively. The H(added) column lists the number of hydrogen atoms added and optimized by MolProbity. The Clashes column lists the number of clashes within the asymmetric unit, whereas Symm-Clashes lists symmetry related clashes.

Mol	Chain	Non-H	H(model)	H(added)	Clashes	Symm-Clashes
1	A	2465	0	2435	29	0
1	B	2466	0	2438	56	0
2	A	48	0	26	5	0
3	A	10	0	0	1	0
4	A	5	0	0	0	0
4	B	5	0	0	0	0
5	B	4	0	3	0	0
6	A	213	0	0	0	0
6	B	184	0	0	1	0
All	All	5400	0	4902	79	0

The all-atom clashscore is defined as the number of clashes found per 1000 atoms (including hydrogen atoms). The all-atom clashscore for this structure is 8.

All (79) close contacts within the same asymmetric unit are listed below, sorted by their clash magnitude.

Atom-1	Atom-2	Interatomic distance (Å)	Clash overlap (Å)
1:B:247:MET:HG3	1:B:248:PRO:CD	1.67	1.23
1:B:247:MET:CG	1:B:248:PRO:HD2	1.84	1.07
1:B:247:MET:HG3	1:B:248:PRO:HD2	1.05	1.04
1:B:38:ASP:O	1:B:41:THR:HG22	1.66	0.94
1:B:247:MET:CG	1:B:248:PRO:CD	2.43	0.92
1:B:148:TRP:H	1:B:197:HIS:HE1	1.18	0.91
1:B:148:TRP:H	1:B:197:HIS:CE1	1.96	0.84
1:A:174:ILE:HD12	1:A:200:GLU:HG3	1.57	0.83
1:A:124:ASP:H	2:A:1001:NDP:H72N	1.24	0.82
1:A:173:ILE:HG12	1:A:199:MET:SD	2.25	0.77
1:B:247:MET:HG3	1:B:248:PRO:HD3	1.64	0.77
1:B:247:MET:CB	1:B:248:PRO:CD	2.63	0.75
1:B:159:ALA:HB3	1:B:221:MET:HE1	1.69	0.75
1:A:88:ASN:HD22	1:A:116:VAL:H	1.37	0.72
1:B:247:MET:CG	1:B:248:PRO:HD3	2.23	0.68
1:B:159:ALA:HB1	1:B:221:MET:HE3	1.74	0.68
1:B:247:MET:CB	1:B:248:PRO:HD3	2.22	0.68
1:B:247:MET:HB2	1:B:248:PRO:HD3	1.76	0.66
1:B:57:GLN:HB3	6:B:3103:HOH:O	1.95	0.65
1:B:159:ALA:HB3	1:B:221:MET:CE	2.28	0.63
1:B:159:ALA:CB	1:B:221:MET:CE	2.76	0.63
1:A:170:VAL:HG22	1:A:240:LEU:HD11	1.81	0.63
1:A:223:ASN:OD1	1:A:225:PHE:N	2.34	0.61
1:B:57:GLN:HG3	1:B:82:TYR:OH	2.01	0.60
1:A:280:THR:OG1	2:A:1001:NDP:H41N	2.02	0.59

Continued on next page...

Continued from previous page...

Atom-1	Atom-2	Interatomic distance (Å)	Clash overlap (Å)
1:B:38:ASP:OD1	1:B:40:LYS:HG2	2.02	0.59
1:A:220:THR:HG22	1:A:220:THR:O	2.02	0.59
1:B:5:ARG:HD2	1:B:62:GLU:O	2.03	0.59
1:B:5:ARG:NH1	1:B:62:GLU:O	2.35	0.59
1:B:4:ILE:HB	1:B:28:MET:HG2	1.87	0.57
1:B:148:TRP:N	1:B:197:HIS:HE1	1.96	0.56
1:B:52:HIS:CD2	1:B:54:ASP:H	2.23	0.56
1:B:122:GLY:O	1:B:126:GLY:HA3	2.05	0.55
1:A:99:ILE:HG21	1:B:326:LEU:HD23	1.88	0.55
1:B:159:ALA:CB	1:B:221:MET:HE1	2.36	0.55
1:A:275:SER:CB	1:B:264:LYS:O	2.55	0.54
1:B:174:ILE:CD1	1:B:200:GLU:OE1	2.56	0.54
1:A:153:SER:O	1:A:154:LEU:HG	2.07	0.54
1:B:96:HIS:HA	1:B:99:ILE:HD12	1.90	0.54
1:A:124:ASP:N	2:A:1001:NDP:H72N	2.00	0.53
2:A:1001:NDP:H42N	3:A:1002:7C3:CB	2.38	0.53
1:B:159:ALA:CB	1:B:221:MET:HE3	2.39	0.51
1:A:122:GLY:O	1:A:126:GLY:HA3	2.11	0.51
1:B:240:LEU:HD23	1:B:240:LEU:C	2.31	0.51
1:B:35:THR:HG23	1:B:37[B]:ARG:O	2.12	0.50
1:B:77:PRO:O	1:B:81:PRO:HD2	2.12	0.50
1:A:223:ASN:O	1:A:226:ASP:OD1	2.30	0.49
1:B:35:THR:HG23	1:B:37[A]:ARG:O	2.12	0.49
1:B:174:ILE:HD12	1:B:200:GLU:CD	2.33	0.49
1:A:37:ARG:HE	2:A:1001:NDP:C2A	2.26	0.49
1:B:35:THR:OG1	1:B:37[B]:ARG:NE	2.46	0.49
1:A:264:LYS:O	1:B:275:SER:CB	2.60	0.49
1:B:274:GLU:O	1:B:277:PRO:HD3	2.12	0.49
1:A:11:TYR:CZ	1:A:16:ARG:HG2	2.49	0.48
1:A:88:ASN:ND2	1:A:116:VAL:H	2.07	0.48
1:B:236:SER:OG	1:B:239:GLU:HG3	2.14	0.48
1:B:227:GLU:HG3	1:B:228:TYR:CD2	2.50	0.47
1:A:217:GLU:O	1:A:221:MET:HB2	2.15	0.46
1:B:5:ARG:NH1	1:B:62:GLU:C	2.69	0.46
1:B:5:ARG:NH1	1:B:62:GLU:HA	2.30	0.46
1:B:273:LEU:HB3	1:B:277:PRO:HG2	1.98	0.45
1:B:52:HIS:HD2	1:B:54:ASP:H	1.63	0.45
1:B:133:LEU:HD23	1:B:133:LEU:C	2.37	0.45
1:B:216:HIS:O	1:B:220:THR:HG23	2.17	0.45
1:B:98:ARG:NH1	1:B:101:ASP:OD2	2.49	0.45
1:A:275:SER:HB2	1:B:264:LYS:O	2.17	0.43

Continued on next page...

Continued from previous page...

Atom-1	Atom-2	Interatomic distance (Å)	Clash overlap (Å)
1:A:37:ARG:O	1:A:39:PRO:HD3	2.18	0.43
1:B:143:ASN:HD22	1:B:188:ASN:HD22	1.65	0.43
1:A:123:TRP:C	1:A:123:TRP:CD1	2.92	0.43
1:A:160:ILE:HA	1:A:163:ILE:HD12	2.01	0.43
1:B:214:VAL:O	1:B:218:ILE:HG13	2.20	0.42
1:A:264:LYS:O	1:B:275:SER:HB2	2.18	0.42
1:A:170:VAL:CG2	1:A:240:LEU:HD11	2.48	0.42
1:B:77:PRO:O	1:B:81:PRO:CD	2.68	0.42
1:A:282:SER:HB2	1:B:138:VAL:HG13	2.01	0.42
1:A:265:GLN:NE2	1:B:277:PRO:HA	2.35	0.41
1:B:51:LEU:HD13	1:B:59:TYR:CE1	2.56	0.41
1:A:32:ALA:HA	1:A:48:VAL:CG2	2.50	0.41
1:A:154:LEU:HD12	1:A:154:LEU:O	2.21	0.41

There are no symmetry-related clashes.

5.3 Torsion angles [i](#)

5.3.1 Protein backbone [i](#)

In the following table, the Percentiles column shows the percent Ramachandran outliers of the chain as a percentile score with respect to all X-ray entries followed by that with respect to entries of similar resolution.

The Analysed column shows the number of residues for which the backbone conformation was analysed, and the total number of residues.

Mol	Chain	Analysed	Favoured	Allowed	Outliers	Percentiles	
1	A	312/326 (96%)	308 (99%)	4 (1%)	0	100	100
1	B	309/326 (95%)	303 (98%)	6 (2%)	0	100	100
All	All	621/652 (95%)	611 (98%)	10 (2%)	0	100	100

There are no Ramachandran outliers to report.

5.3.2 Protein sidechains [i](#)

In the following table, the Percentiles column shows the percent sidechain outliers of the chain as a percentile score with respect to all X-ray entries followed by that with respect to entries of similar resolution.

The Analysed column shows the number of residues for which the sidechain conformation was analysed, and the total number of residues.

Mol	Chain	Analysed	Rotameric	Outliers	Percentiles	
1	A	265/272 (97%)	264 (100%)	1 (0%)	93	89
1	B	265/272 (97%)	263 (99%)	2 (1%)	85	75
All	All	530/544 (97%)	527 (99%)	3 (1%)	89	82

All (3) residues with a non-rotameric sidechain are listed below:

Mol	Chain	Res	Type
1	A	148	TRP
1	B	87	PHE
1	B	148	TRP

Some sidechains can be flipped to improve hydrogen bonding and reduce clashes. All (12) such sidechains are listed below:

Mol	Chain	Res	Type
1	A	23	GLN
1	A	88	ASN
1	A	131	ASN
1	A	143	ASN
1	A	188	ASN
1	A	265	GLN
1	B	52	HIS
1	B	85	GLN
1	B	131	ASN
1	B	188	ASN
1	B	197	HIS
1	B	233	HIS

5.3.3 RNA ⓘ

There are no RNA molecules in this entry.

5.4 Non-standard residues in protein, DNA, RNA chains ⓘ

There are no non-standard protein/DNA/RNA residues in this entry.

5.5 Carbohydrates [i](#)

There are no carbohydrates in this entry.

5.6 Ligand geometry [i](#)

5 ligands are modelled in this entry.

In the following table, the Counts columns list the number of bonds (or angles) for which Mogul statistics could be retrieved, the number of bonds (or angles) that are observed in the model and the number of bonds (or angles) that are defined in the Chemical Component Dictionary. The Link column lists molecule types, if any, to which the group is linked. The Z score for a bond length (or angle) is the number of standard deviations the observed value is removed from the expected value. A bond length (or angle) with $|Z| > 2$ is considered an outlier worth inspection. RMSZ is the root-mean-square of all Z scores of the bond lengths (or angles).

Mol	Type	Chain	Res	Link	Bond lengths			Bond angles		
					Counts	RMSZ	# Z > 2	Counts	RMSZ	# Z > 2
2	NDP	A	1001	-	43,52,52	1.00	2 (4%)	49,80,80	1.42	5 (10%)
3	7C3	A	1002	-	6,9,9	1.91	1 (16%)	6,10,10	2.48	2 (33%)
4	SO4	A	1003	-	4,4,4	0.79	0	6,6,6	0.35	0
5	ACT	B	3001	-	1,3,3	1.26	0	0,3,3	0.00	-
4	SO4	B	3002	-	4,4,4	0.50	0	6,6,6	0.75	0

In the following table, the Chirals column lists the number of chiral outliers, the number of chiral centers analysed, the number of these observed in the model and the number defined in the Chemical Component Dictionary. Similar counts are reported in the Torsion and Rings columns. '-' means no outliers of that kind were identified.

Mol	Type	Chain	Res	Link	Chirals	Torsions	Rings
2	NDP	A	1001	-	-	0/30/77/77	0/5/5/5
3	7C3	A	1002	-	-	0/5/9/9	0/0/0/0
4	SO4	A	1003	-	-	0/0/0/0	0/0/0/0
5	ACT	B	3001	-	-	0/0/0/0	0/0/0/0
4	SO4	B	3002	-	-	0/0/0/0	0/0/0/0

All (3) bond length outliers are listed below:

Mol	Chain	Res	Type	Atoms	Z	Observed(Å)	Ideal(Å)
2	A	1001	NDP	C6N-C5N	3.04	1.38	1.33
2	A	1001	NDP	C5A-C4A	3.09	1.47	1.40
3	A	1002	7C3	CB-CA	4.24	1.57	1.51

All (7) bond angle outliers are listed below:

Mol	Chain	Res	Type	Atoms	Z	Observed(°)	Ideal(°)
2	A	1001	NDP	N3A-C2A-N1A	-6.51	123.19	128.86
3	A	1002	7C3	CG-CB-CA	-5.01	104.27	113.57
2	A	1001	NDP	C4A-C5A-N7A	-2.39	107.10	109.41
3	A	1002	7C3	CB-CA-C	-2.33	116.33	121.60
2	A	1001	NDP	C4B-O4B-C1B	2.00	111.90	109.77
2	A	1001	NDP	C2A-N1A-C6A	2.11	122.47	118.77
2	A	1001	NDP	C3D-C2D-C1D	2.28	105.81	101.43

There are no chirality outliers.

There are no torsion outliers.

There are no ring outliers.

2 monomers are involved in 5 short contacts:

Mol	Chain	Res	Type	Clashes	Symm-Clashes
2	A	1001	NDP	5	0
3	A	1002	7C3	1	0

5.7 Other polymers [i](#)

There are no such residues in this entry.

5.8 Polymer linkage issues [i](#)

There are no chain breaks in this entry.

6 Fit of model and data

6.1 Protein, DNA and RNA chains

In the following table, the column labelled ‘#RSRZ> 2’ contains the number (and percentage) of RSRZ outliers, followed by percent RSRZ outliers for the chain as percentile scores relative to all X-ray entries and entries of similar resolution. The OWAB column contains the minimum, median, 95th percentile and maximum values of the occupancy-weighted average B-factor per residue. The column labelled ‘Q< 0.9’ lists the number of (and percentage) of residues with an average occupancy less than 0.9.

Mol	Chain	Analysed	<RSRZ>	#RSRZ>2	OWAB(Å ²)	Q<0.9
1	A	318/326 (97%)	0.68	37 (11%) 5 7	17, 29, 66, 84	0
1	B	316/326 (96%)	0.71	37 (11%) 5 7	16, 34, 57, 86	0
All	All	634/652 (97%)	0.69	74 (11%) 5 7	16, 32, 62, 86	0

All (74) RSRZ outliers are listed below:

Mol	Chain	Res	Type	RSRZ
1	A	224	PHE	8.6
1	A	220	THR	7.2
1	B	276	ASN	6.4
1	A	155	GLY	6.0
1	A	154	LEU	5.6
1	A	275	SER	5.4
1	A	246	GLY	5.4
1	A	242	GLN	5.3
1	B	247	MET	5.2
1	B	258	LYS	5.1
1	A	245	SER	4.9
1	A	222	PRO	4.7
1	B	248	PRO	4.7
1	B	275	SER	4.6
1	B	243	ASN	4.6
1	A	223	ASN	4.4
1	B	241	LYS	4.3
1	A	258	LYS	4.2
1	B	242	GLN	3.8
1	B	127	LEU	3.5
1	B	40	LYS	3.4
1	A	225	PHE	3.4
1	B	2	SER	3.3
1	B	240	LEU	3.3

Continued on next page...

Continued from previous page...

Mol	Chain	Res	Type	RSRZ
1	B	155	GLY	3.2
1	A	277	PRO	3.2
1	B	130	LEU	3.2
1	B	37[A]	ARG	3.1
1	B	308	ILE	3.0
1	A	238	GLU	3.0
1	A	276	ASN	2.9
1	B	74	THR	2.9
1	A	152	VAL	2.9
1	B	61	ASP	2.8
1	A	127	LEU	2.8
1	A	305	VAL	2.8
1	B	238	GLU	2.7
1	A	68	LEU	2.7
1	B	62	GLU	2.6
1	A	90	ILE	2.6
1	B	287	TYR	2.6
1	B	36	ARG	2.6
1	A	130	LEU	2.6
1	B	277	PRO	2.5
1	B	112	GLN	2.5
1	A	264	LYS	2.5
1	A	269	PHE	2.5
1	A	310	PHE	2.5
1	B	121	VAL	2.5
1	A	122	GLY	2.4
1	A	160	ILE	2.4
1	B	305	VAL	2.4
1	B	185	SER	2.4
1	A	137	VAL	2.3
1	B	47	ASN	2.3
1	B	313	LEU	2.3
1	A	121	VAL	2.3
1	B	4	ILE	2.3
1	A	159	ALA	2.3
1	A	128	PHE	2.3
1	B	123	TRP	2.2
1	B	278	MET	2.2
1	A	207	GLU	2.2
1	B	128	PHE	2.2
1	A	134	LEU	2.2
1	A	240	LEU	2.1

Continued on next page...

Continued from previous page...

Mol	Chain	Res	Type	RSRZ
1	B	239	GLU	2.1
1	B	134	LEU	2.1
1	B	98	ARG	2.1
1	A	257	GLY	2.1
1	A	313	LEU	2.1
1	A	190	GLU	2.0
1	B	283	ALA	2.0
1	A	243	ASN	2.0

6.2 Non-standard residues in protein, DNA, RNA chains [i](#)

There are no non-standard protein/DNA/RNA residues in this entry.

6.3 Carbohydrates [i](#)

There are no carbohydrates in this entry.

6.4 Ligands [i](#)

In the following table, the Atoms column lists the number of modelled atoms in the group and the number defined in the chemical component dictionary. LLDF column lists the quality of electron density of the group with respect to its neighbouring residues in protein, DNA or RNA chains. The B-factors column lists the minimum, median, 95th percentile and maximum values of B factors of atoms in the group. The column labelled 'Q< 0.9' lists the number of atoms with occupancy less than 0.9.

Mol	Type	Chain	Res	Atoms	RSCC	RSR	LLDF	B-factors(Å ²)	Q<0.9
5	ACT	B	3001	4/4	0.93	0.38	8.05	43,47,47,48	0
2	NDP	A	1001	48/48	0.84	0.23	1.54	20,35,41,45	0
4	SO4	B	3002	5/5	0.96	0.20	0.63	51,54,59,63	0
4	SO4	A	1003	5/5	0.94	0.19	0.30	50,53,59,62	0
3	7C3	A	1002	10/10	0.66	0.23	-	36,48,60,61	0

6.5 Other polymers [i](#)

There are no such residues in this entry.