



# Full wwPDB X-ray Structure Validation Report ⓘ

Jun 21, 2017 – 04:10 PM EDT

PDB ID : 1H1T  
Title : PHOSPHOPANTETHEINE ADENYLYLTRANSFERASE IN COMPLEX  
WITH Coenzyme A FROM ESCHERICHIA COLI  
Authors : Izard, T.  
Deposited on : 2002-07-21  
Resolution : 1.78 Å(reported)

This is a Full wwPDB X-ray Structure Validation Report for a publicly released PDB entry.

We welcome your comments at [validation@mail.wwpdb.org](mailto:validation@mail.wwpdb.org)

A user guide is available at

<http://wwpdb.org/validation/2016/XrayValidationReportHelp>

with specific help available everywhere you see the ⓘ symbol.

---

The following versions of software and data (see [references ⓘ](#)) were used in the production of this report:

MolProbity : 4.02b-467  
Mogul : 1.7.2 (RC1), CSD as538be (2017)  
Xtriage (Phenix) : **NOT EXECUTED**  
EDS : **NOT EXECUTED**  
Percentile statistics : 20161228.v01 (using entries in the PDB archive December 28th 2016)  
Ideal geometry (proteins) : Engh & Huber (2001)  
Ideal geometry (DNA, RNA) : Parkinson et al. (1996)  
Validation Pipeline (wwPDB-VP) : rb-20029077

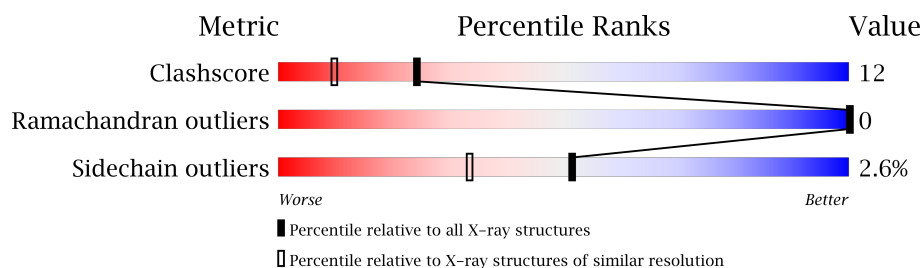
# 1 Overall quality at a glance

The following experimental techniques were used to determine the structure:

*X-RAY DIFFRACTION*

The reported resolution of this entry is 1.78 Å.

Percentile scores (ranging between 0-100) for global validation metrics of the entry are shown in the following graphic. The table shows the number of entries on which the scores are based.



Metric	Whole archive (#Entries)	Similar resolution (#Entries, resolution range(Å))
Clashscore	112137	8247 (1.80-1.76)
Ramachandran outliers	110173	8154 (1.80-1.76)
Sidechain outliers	110143	8153 (1.80-1.76)

The table below summarises the geometric issues observed across the polymeric chains and their fit to the electron density. The red, orange, yellow and green segments on the lower bar indicate the fraction of residues that contain outliers for  $\geq 3$ , 2, 1 and 0 types of geometric quality criteria. A grey segment represents the fraction of residues that are not modelled. The numeric value for each fraction is indicated below the corresponding segment, with a dot representing fractions  $\leq 5\%$ . The upper red bar (where present) indicates the fraction of residues that have poor fit to the electron density. The numeric value is given above the bar.

Note EDS was not executed.

Mol	Chain	Length	Quality of chain
1	A	159	
1	B	159	

## 2 Entry composition [i](#)

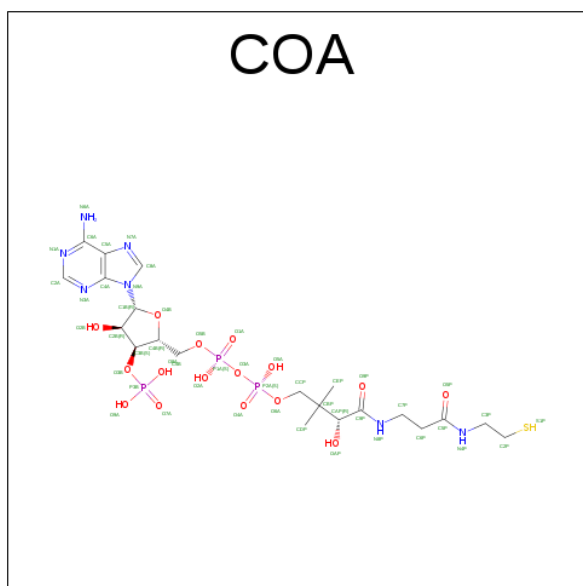
There are 5 unique types of molecules in this entry. The entry contains 2857 atoms, of which 0 are hydrogens and 0 are deuteriums.

In the tables below, the ZeroOcc column contains the number of atoms modelled with zero occupancy, the AltConf column contains the number of residues with at least one atom in alternate conformation and the Trace column contains the number of residues modelled with at most 2 atoms.

- Molecule 1 is a protein called PHOSPHOPANTETHEINE ADENYLYLTRANSFERASE.

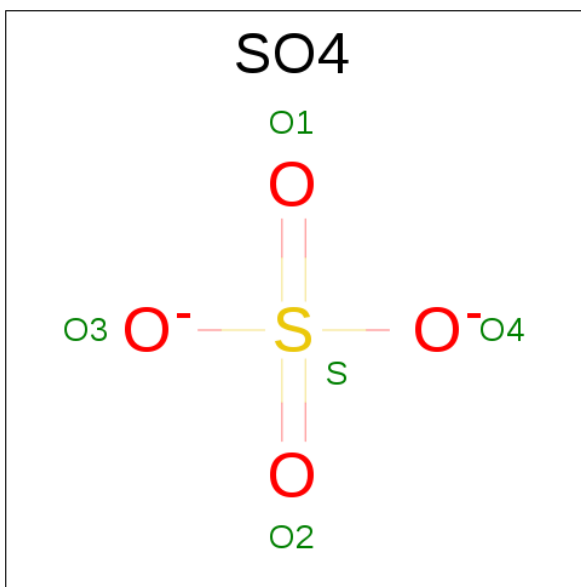
Mol	Chain	Residues	Atoms					ZeroOcc	AltConf	Trace
1	A	158	Total	C	N	O	S	0	0	0
			1245	792	221	224	8			
1	B	157	Total	C	N	O	S	0	0	0
			1236	787	219	222	8			

- Molecule 2 is COENZYME A (three-letter code: COA) (formula:  $C_{21}H_{36}N_7O_{16}P_3S$ ).



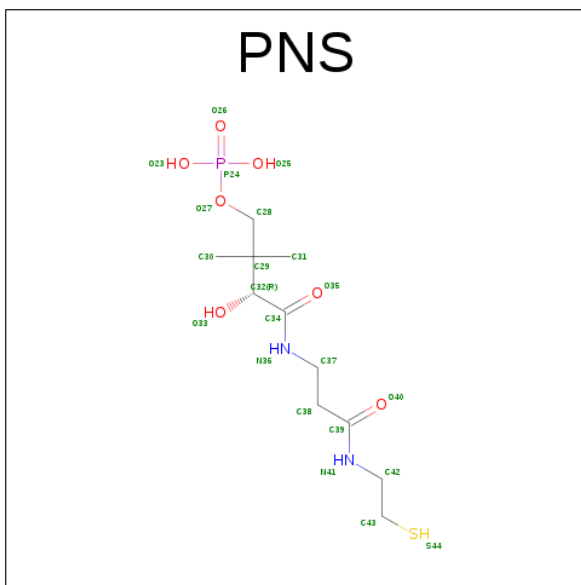
Mol	Chain	Residues	Atoms					ZeroOcc	AltConf
2	A	1	Total	C	N	O	P S	0	0
			48	21	7	16	3 1		

- Molecule 3 is SULFATE ION (three-letter code: SO4) (formula:  $O_4S$ ).



Mol	Chain	Residues	Atoms			ZeroOcc	AltConf
3	A	1	Total	O	S	0	0
			5	4	1		
3	B	1	Total	O	S	0	0
			5	4	1		
3	B	1	Total	O	S	0	0
			5	4	1		
3	B	1	Total	O	S	0	0
			5	4	1		

- Molecule 4 is 4'-PHOSPHOPANTETHEINE (three-letter code: PNS) (formula:  $C_{11}H_{23}N_2O_7PS$ ).



Mol	Chain	Residues	Atoms					ZeroOcc	AltConf
4	B	1	Total	C	N	O	P	S	
			22	11	2	7	1	1	
								0	0

- Molecule 5 is water.


Mol	Chain	Residues	Atoms		ZeroOcc	AltConf
5	A	141	Total	O		
			141	141	0	0
5	B	145	Total	O		
			145	145	0	0

### 3 Residue-property plots [i](#)

These plots are drawn for all protein, RNA and DNA chains in the entry. The first graphic for a chain summarises the proportions of the various outlier classes displayed in the second graphic. The second graphic shows the sequence view annotated by issues in geometry and electron density. Residues are color-coded according to the number of geometric quality criteria for which they contain at least one outlier: green = 0, yellow = 1, orange = 2 and red = 3 or more. A red dot above a residue indicates a poor fit to the electron density ( $RSRZ > 2$ ). Stretches of 2 or more consecutive residues without any outlier are shown as a green connector. Residues present in the sample, but not in the model, are shown in grey.


Note EDS was not executed.

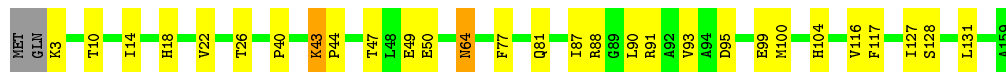
#### • Molecule 1: PHOSPHOPANTETHEINE ADENYLYLTRANSFERASE

Chain A: 



#### • Molecule 1: PHOSPHOPANTETHEINE ADENYLYLTRANSFERASE

Chain B: 



## 4 Data and refinement statistics

Xtriage (Phenix) and EDS were not executed - this section is therefore incomplete.

Property	Value	Source
Space group	I 2 3	Depositor
Cell constants a, b, c, $\alpha$ , $\beta$ , $\gamma$	135.43Å 135.43Å 135.43Å 90.00° 90.00° 90.00°	Depositor
Resolution (Å)	21.97 – 1.78	Depositor
% Data completeness (in resolution range)	99.0 (21.97-1.78)	Depositor
$R_{merge}$	0.16	Depositor
$R_{sym}$	(Not available)	Depositor
Refinement program	CNS	Depositor
R, $R_{free}$	0.218 , 0.241	Depositor
Estimated twinning fraction	No twinning to report.	Xtriage
Total number of atoms	2857	wwPDB-VP
Average B, all atoms (Å <sup>2</sup> )	24.0	wwPDB-VP

## 5 Model quality

### 5.1 Standard geometry

Bond lengths and bond angles in the following residue types are not validated in this section: COA, PNS, SO4

The Z score for a bond length (or angle) is the number of standard deviations the observed value is removed from the expected value. A bond length (or angle) with  $|Z| > 5$  is considered an outlier worth inspection. RMSZ is the root-mean-square of all Z scores of the bond lengths (or angles).

Mol	Chain	Bond lengths		Bond angles	
		RMSZ	$\# Z  > 5$	RMSZ	$\# Z  > 5$
1	A	0.35	0/1273	0.57	0/1723
1	B	0.33	0/1264	0.54	0/1711
All	All	0.34	0/2537	0.56	0/3434

There are no bond length outliers.

There are no bond angle outliers.

There are no chirality outliers.

There are no planarity outliers.

### 5.2 Too-close contacts

In the following table, the Non-H and H(model) columns list the number of non-hydrogen atoms and hydrogen atoms in the chain respectively. The H(added) column lists the number of hydrogen atoms added and optimized by MolProbity. The Clashes column lists the number of clashes within the asymmetric unit, whereas Symm-Clashes lists symmetry related clashes.

Mol	Chain	Non-H	H(model)	H(added)	Clashes	Symm-Clashes
1	A	1245	0	1242	38	0
1	B	1236	0	1234	28	0
2	A	48	0	31	3	0
3	A	5	0	0	0	0
3	B	15	0	0	0	0
4	B	22	0	21	1	0
5	A	141	0	0	5	0
5	B	145	0	0	3	0
All	All	2857	0	2528	63	0

The all-atom clashscore is defined as the number of clashes found per 1000 atoms (including hydrogen atoms). The all-atom clashscore for this structure is 12.

All (63) close contacts within the same asymmetric unit are listed below, sorted by their clash magnitude.

Atom-1	Atom-2	Interatomic distance (Å)	Clash overlap (Å)
1:A:72:ASP:OD1	5:A:2058:HOH:O	1.52	1.22
1:A:2:GLN:HG3	1:A:3:LYS:H	1.50	0.77
1:B:64:ASN:H	1:B:64:ASN:HD22	1.37	0.72
1:A:127:ILE:HD12	1:A:127:ILE:O	1.90	0.70
1:B:87:ILE:HD13	1:B:116:VAL:CG2	2.22	0.69
1:B:40:PRO:O	1:B:43:LYS:HE2	1.93	0.69
1:A:72:ASP:CG	1:A:73:LEU:N	2.45	0.69
1:B:93:VAL:HG23	1:B:95:ASP:HB2	1.76	0.68
1:A:72:ASP:CG	1:A:73:LEU:H	1.99	0.66
1:B:26:THR:HB	1:B:64:ASN:HD21	1.60	0.65
1:A:2:GLN:HG3	1:A:3:LYS:N	2.12	0.64
1:B:91:ARG:NH1	1:B:128:SER:HB3	2.15	0.62
1:B:64:ASN:N	1:B:64:ASN:HD22	1.97	0.62
1:A:64:ASN:HD22	1:A:64:ASN:C	2.03	0.61
1:B:88:ARG:HD2	5:B:2009:HOH:O	2.01	0.60
1:A:9:GLY:HA2	2:A:1160:COA:H121	1.83	0.60
1:B:91:ARG:HH12	1:B:128:SER:HB3	1.66	0.58
1:B:49:GLU:CD	1:B:49:GLU:H	2.06	0.57
1:B:47:THR:HB	1:B:49:GLU:OE2	2.05	0.56
1:A:117:PHE:HB2	1:B:117:PHE:HB2	1.89	0.55
1:A:133:LYS:O	1:A:137:ARG:HG3	2.07	0.55
1:B:64:ASN:ND2	1:B:64:ASN:H	2.03	0.55
1:A:72:ASP:O	2:A:1160:COA:H22	2.08	0.54
1:A:104:HIS:HE1	5:B:2110:HOH:O	1.91	0.53
1:A:127:ILE:HG21	1:A:145:PHE:CE2	2.44	0.53
1:A:92:ALA:HA	1:B:100:MET:SD	2.48	0.53
1:B:127:ILE:HG13	1:B:128:SER:N	2.25	0.51
1:B:47:THR:OG1	1:B:50:GLU:HG3	2.12	0.50
1:A:57:GLN:NE2	5:A:2046:HOH:O	2.44	0.49
1:B:90:LEU:CD2	1:B:99:GLU:HG3	2.42	0.49
1:A:73:LEU:HD21	1:A:109:LEU:HD13	1.95	0.49
1:A:26:THR:HG21	1:A:65:VAL:HG23	1.96	0.48
1:A:64:ASN:C	1:A:64:ASN:ND2	2.65	0.48
1:A:64:ASN:N	1:A:64:ASN:ND2	2.60	0.48
1:B:87:ILE:HD13	1:B:116:VAL:HG23	1.95	0.48
1:A:134:GLU:O	1:A:138:HIS:HD2	1.96	0.47
1:A:22:VAL:O	1:A:26:THR:HG23	2.14	0.47
1:A:12:ASP:O	1:A:133:LYS:HD3	2.14	0.47
1:A:87:ILE:HD13	1:A:116:VAL:CG2	2.45	0.47
1:B:91:ARG:C	1:B:93:VAL:H	2.19	0.46

*Continued on next page...*

*Continued from previous page...*

Atom-1	Atom-2	Interatomic distance (Å)	Clash overlap (Å)
1:A:118:LEU:HD12	1:A:118:LEU:N	2.30	0.46
1:A:97:GLU:HG2	5:A:2075:HOH:O	2.15	0.46
5:A:2105:HOH:O	1:B:104:HIS:HE1	1.97	0.46
1:A:117:PHE:C	1:A:118:LEU:HD12	2.35	0.46
1:A:40:PRO:HG2	1:A:44:PRO:HD3	1.98	0.45
1:A:97:GLU:OE2	1:A:97:GLU:HA	2.15	0.45
1:B:10:THR:OG1	4:B:1163:PNS:O26	2.21	0.45
1:B:14:ILE:HG13	1:B:18:HIS:HB2	1.99	0.45
1:B:77:PHE:O	1:B:81:GLN:HG2	2.17	0.45
1:A:28:MET:HG3	1:A:29:PHE:CD1	2.52	0.44
1:A:26:THR:HG21	1:A:65:VAL:CG2	2.48	0.43
1:A:71:SER:O	1:A:72:ASP:OD1	2.36	0.43
1:A:28:MET:HA	1:B:3:LYS:HE2	2.01	0.42
1:B:43:LYS:N	1:B:44:PRO:HD3	2.33	0.42
1:A:127:ILE:CD1	5:A:2017:HOH:O	2.68	0.42
1:A:64:ASN:ND2	1:A:64:ASN:H	2.17	0.42
1:B:14:ILE:HG13	1:B:18:HIS:CB	2.51	0.41
1:B:90:LEU:HD21	1:B:99:GLU:HG3	2.01	0.41
1:A:96:PHE:O	1:A:100:MET:HG2	2.21	0.41
1:A:64:ASN:HD22	1:A:65:VAL:N	2.17	0.41
1:A:72:ASP:O	2:A:1160:COA:C2P	2.69	0.41
1:A:104:HIS:HD2	5:B:2139:HOH:O	2.03	0.40
1:B:22:VAL:O	1:B:26:THR:HG23	2.22	0.40

There are no symmetry-related clashes.

## 5.3 Torsion angles [i](#)

### 5.3.1 Protein backbone [i](#)

In the following table, the Percentiles column shows the percent Ramachandran outliers of the chain as a percentile score with respect to all X-ray entries followed by that with respect to entries of similar resolution.

The Analysed column shows the number of residues for which the backbone conformation was analysed, and the total number of residues.

Mol	Chain	Analysed	Favoured	Allowed	Outliers	Percentiles	
1	A	156/159 (98%)	151 (97%)	5 (3%)	0	100	100
1	B	155/159 (98%)	152 (98%)	3 (2%)	0	100	100

*Continued on next page...*

*Continued from previous page...*

Mol	Chain	Analysed	Favoured	Allowed	Outliers	Percentiles	
All	All	311/318 (98%)	303 (97%)	8 (3%)	0	100	100

There are no Ramachandran outliers to report.

### 5.3.2 Protein sidechains ⓘ

In the following table, the Percentiles column shows the percent sidechain outliers of the chain as a percentile score with respect to all X-ray entries followed by that with respect to entries of similar resolution.

The Analysed column shows the number of residues for which the sidechain conformation was analysed, and the total number of residues.

Mol	Chain	Analysed	Rotameric	Outliers	Percentiles	
1	A	133/134 (99%)	129 (97%)	4 (3%)	46	27
1	B	132/134 (98%)	129 (98%)	3 (2%)	56	38
All	All	265/268 (99%)	258 (97%)	7 (3%)	51	33

All (7) residues with a non-rotameric sidechain are listed below:

Mol	Chain	Res	Type
1	A	64	ASN
1	A	72	ASP
1	A	131	LEU
1	A	134	GLU
1	B	43	LYS
1	B	64	ASN
1	B	131	LEU

Some sidechains can be flipped to improve hydrogen bonding and reduce clashes. All (16) such sidechains are listed below:

Mol	Chain	Res	Type
1	A	2	GLN
1	A	27	GLN
1	A	56	GLN
1	A	57	GLN
1	A	64	ASN
1	A	104	HIS
1	A	138	HIS
1	A	152	GLN

*Continued on next page...*

*Continued from previous page...*

Mol	Chain	Res	Type
1	B	16	ASN
1	B	27	GLN
1	B	56	GLN
1	B	57	GLN
1	B	64	ASN
1	B	80	ASN
1	B	101	GLN
1	B	104	HIS

### 5.3.3 RNA [i](#)

There are no RNA molecules in this entry.

### 5.4 Non-standard residues in protein, DNA, RNA chains [i](#)

There are no non-standard protein/DNA/RNA residues in this entry.

### 5.5 Carbohydrates [i](#)

There are no carbohydrates in this entry.

### 5.6 Ligand geometry [i](#)

6 ligands are modelled in this entry.

In the following table, the Counts columns list the number of bonds (or angles) for which Mogul statistics could be retrieved, the number of bonds (or angles) that are observed in the model and the number of bonds (or angles) that are defined in the chemical component dictionary. The Link column lists molecule types, if any, to which the group is linked. The Z score for a bond length (or angle) is the number of standard deviations the observed value is removed from the expected value. A bond length (or angle) with  $|Z| > 2$  is considered an outlier worth inspection. RMSZ is the root-mean-square of all Z scores of the bond lengths (or angles).

Mol	Type	Chain	Res	Link	Bond lengths			Bond angles		
					Counts	RMSZ	$\# Z  > 2$	Counts	RMSZ	$\# Z  > 2$
2	COA	A	1160	-	43,50,50	1.67	9 (20%)	48,75,75	1.81	11 (22%)
3	SO4	A	1161	-	4,4,4	0.27	0	6,6,6	0.16	0
3	SO4	B	1160	-	4,4,4	0.29	0	6,6,6	0.11	0
3	SO4	B	1161	-	4,4,4	0.35	0	6,6,6	0.08	0
3	SO4	B	1162	-	4,4,4	0.31	0	6,6,6	0.05	0
4	PNS	B	1163	-	19,21,21	1.71	4 (21%)	24,29,29	1.24	4 (16%)

In the following table, the Chirals column lists the number of chiral outliers, the number of chiral centers analysed, the number of these observed in the model and the number defined in the chemical component dictionary. Similar counts are reported in the Torsion and Rings columns. '-' means no outliers of that kind were identified.

Mol	Type	Chain	Res	Link	Chirals	Torsions	Rings
2	COA	A	1160	-	-	0/44/64/64	0/3/3/3
3	SO4	A	1161	-	-	0/0/0/0	0/0/0/0
3	SO4	B	1160	-	-	0/0/0/0	0/0/0/0
3	SO4	B	1161	-	-	0/0/0/0	0/0/0/0
3	SO4	B	1162	-	-	0/0/0/0	0/0/0/0
4	PNS	B	1163	-	-	0/27/27/27	0/0/0/0

All (13) bond length outliers are listed below:

Mol	Chain	Res	Type	Atoms	Z	Observed(Å)	Ideal(Å)
2	A	1160	COA	O2B-C2B	-5.79	1.29	1.43
2	A	1160	COA	P3B-O3B	-2.84	1.54	1.59
2	A	1160	COA	P2A-O6A	-2.38	1.49	1.59
4	B	1163	PNS	C34-N36	2.09	1.37	1.33
2	A	1160	COA	C4A-N3A	2.38	1.39	1.35
2	A	1160	COA	CCP-CBP	2.51	1.56	1.52
4	B	1163	PNS	C42-N41	2.59	1.52	1.46
4	B	1163	PNS	O35-C34	2.77	1.28	1.23
2	A	1160	COA	C7P-N8P	2.83	1.52	1.46
2	A	1160	COA	O9P-C9P	2.84	1.29	1.23
2	A	1160	COA	C3P-N4P	2.97	1.53	1.46
2	A	1160	COA	C2A-N1A	3.35	1.40	1.33
4	B	1163	PNS	C28-C29	3.86	1.57	1.52

All (15) bond angle outliers are listed below:

Mol	Chain	Res	Type	Atoms	Z	Observed(°)	Ideal(°)
2	A	1160	COA	C3P-N4P-C5P	-4.18	114.81	122.84
2	A	1160	COA	O5P-C5P-C6P	-3.36	115.69	122.01
2	A	1160	COA	C4B-O4B-C1B	-2.82	106.77	109.77
4	B	1163	PNS	O23-P24-O27	-2.78	99.34	106.73
2	A	1160	COA	CAP-C9P-N8P	-2.58	111.21	116.58
4	B	1163	PNS	C43-C42-N41	-2.56	106.93	112.50
2	A	1160	COA	O9A-P3B-O8A	-2.02	99.46	107.61
4	B	1163	PNS	C30-C29-C32	2.01	112.30	108.82
2	A	1160	COA	O8A-P3B-O3B	2.13	115.70	106.00
4	B	1163	PNS	O27-P24-O26	2.15	112.52	106.47
2	A	1160	COA	CDP-CBP-CCP	2.39	111.88	108.37

*Continued on next page...*

*Continued from previous page...*

Mol	Chain	Res	Type	Atoms	Z	Observed( $^{\circ}$ )	Ideal( $^{\circ}$ )
2	A	1160	COA	O6A-CCP-CBP	2.65	114.81	110.55
2	A	1160	COA	C6P-C5P-N4P	2.77	121.26	116.49
2	A	1160	COA	C2P-C3P-N4P	3.42	119.93	112.50
2	A	1160	COA	O9P-C9P-N8P	6.91	136.38	123.07

There are no chirality outliers.

There are no torsion outliers.

There are no ring outliers.

2 monomers are involved in 4 short contacts:

Mol	Chain	Res	Type	Clashes	Symm-Clashes
2	A	1160	COA	3	0
4	B	1163	PNS	1	0

## 5.7 Other polymers [i](#)

There are no such residues in this entry.

## 5.8 Polymer linkage issues [i](#)

There are no chain breaks in this entry.

## 6 Fit of model and data

### 6.1 Protein, DNA and RNA chains

EDS was not executed - this section is therefore empty.

### 6.2 Non-standard residues in protein, DNA, RNA chains

EDS was not executed - this section is therefore empty.

### 6.3 Carbohydrates

EDS was not executed - this section is therefore empty.

### 6.4 Ligands

EDS was not executed - this section is therefore empty.

### 6.5 Other polymers

EDS was not executed - this section is therefore empty.