



# Full wwPDB X-ray Structure Validation Report ⓘ

Oct 29, 2017 – 10:08 AM EDT

PDB ID : 3H2M  
Title : Structural Studies of Pterin-Based Inhibitors of Dihydropteroate Synthase  
Authors : Yun, M.-K.; White, S.W.  
Deposited on : unknown  
Resolution : 2.31 Å(reported)

This is a Full wwPDB X-ray Structure Validation Report for a publicly released PDB entry.

We welcome your comments at [validation@mail.wwpdb.org](mailto:validation@mail.wwpdb.org)

A user guide is available at

<http://wwpdb.org/validation/2016/XrayValidationReportHelp>

with specific help available everywhere you see the ⓘ symbol.

---

The following versions of software and data (see [references ⓘ](#)) were used in the production of this report:

MolProbity : 4.02b-467  
Mogul : 1.7.2 (RC1), CSD as538be (2017)  
Xtriage (Phenix) : 1.9-1692  
EDS : rb-20030345  
Percentile statistics : 20161228.v01 (using entries in the PDB archive December 28th 2016)  
Refmac : 5.8.0135  
CCP4 : 6.5.0  
Ideal geometry (proteins) : Engh & Huber (2001)  
Ideal geometry (DNA, RNA) : Parkinson et al. (1996)  
Validation Pipeline (wwPDB-VP) : rb-20030345

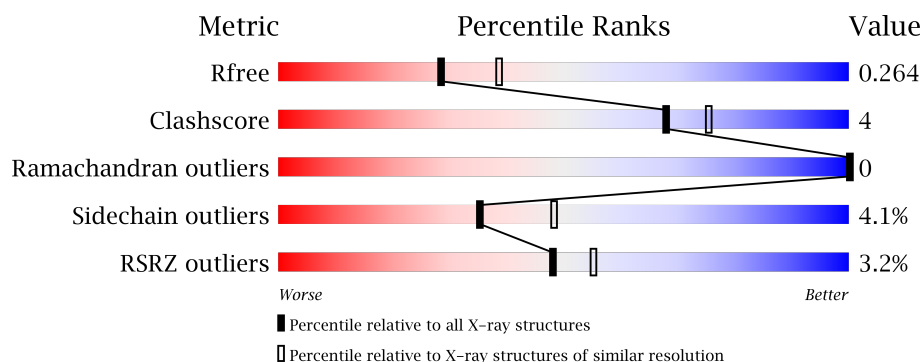
# 1 Overall quality at a glance

The following experimental techniques were used to determine the structure:

## *X-RAY DIFFRACTION*

The reported resolution of this entry is 2.31 Å.

Percentile scores (ranging between 0-100) for global validation metrics of the entry are shown in the following graphic. The table shows the number of entries on which the scores are based.



Metric	Whole archive (#Entries)	Similar resolution (#Entries, resolution range(Å))
$R_{free}$	100719	4787 (2.34-2.30)
Clashscore	112137	5439 (2.34-2.30)
Ramachandran outliers	110173	5386 (2.34-2.30)
Sidechain outliers	110143	5385 (2.34-2.30)
RSRZ outliers	101464	4814 (2.34-2.30)

The table below summarises the geometric issues observed across the polymeric chains and their fit to the electron density. The red, orange, yellow and green segments on the lower bar indicate the fraction of residues that contain outliers for  $\geq 3$ , 2, 1 and 0 types of geometric quality criteria. A grey segment represents the fraction of residues that are not modelled. The numeric value for each fraction is indicated below the corresponding segment, with a dot representing fractions  $\leq 5\%$ . The upper red bar (where present) indicates the fraction of residues that have poor fit to the electron density. The numeric value is given above the bar.

Mol	Chain	Length	Quality of chain
1	A	297	<div> <div>5%</div> <div> <div></div> <div>78%</div> <div>11%</div> <div>9%</div> </div> </div>
1	B	297	<div> <div>%</div> <div> <div></div> <div>72%</div> <div>14%</div> <div>13%</div> </div> </div>

The following table lists non-polymeric compounds, carbohydrate monomers and non-standard residues in protein, DNA, RNA chains that are outliers for geometric or electron-density-fit criteria:

Mol	Type	Chain	Res	Chirality	Geometry	Clashes	Electron density
2	B61	B	902	-	-	-	X

## 2 Entry composition

There are 4 unique types of molecules in this entry. The entry contains 4335 atoms, of which 0 are hydrogens and 0 are deuteriums.

In the tables below, the ZeroOcc column contains the number of atoms modelled with zero occupancy, the AltConf column contains the number of residues with at least one atom in alternate conformation and the Trace column contains the number of residues modelled with at most 2 atoms.

- Molecule 1 is a protein called Dihydropteroate synthase.

Mol	Chain	Residues	Atoms					ZeroOcc	AltConf	Trace
1	A	270	Total	C	N	O	S	0	1	0
			2082	1307	357	401	17			
1	B	259	Total	C	N	O	S	0	2	0
			2020	1274	346	383	17			

There are 40 discrepancies between the modelled and reference sequences:

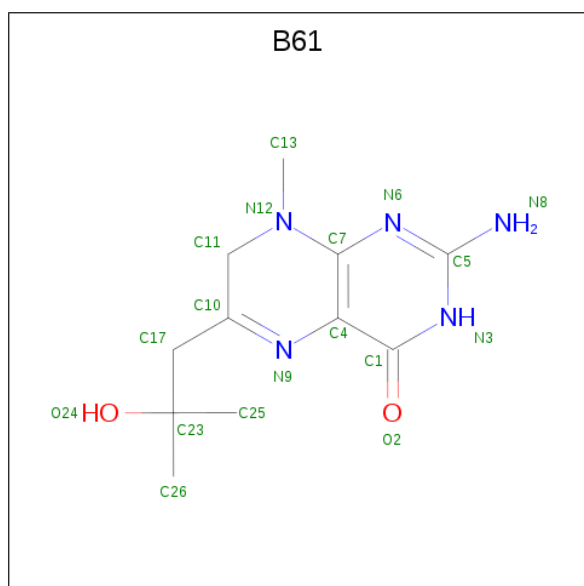
Chain	Residue	Modelled	Actual	Comment	Reference
A	-19	MET	-	EXPRESSION TAG	UNP B1UXN2
A	-18	GLY	-	EXPRESSION TAG	UNP B1UXN2
A	-17	SER	-	EXPRESSION TAG	UNP B1UXN2
A	-16	SER	-	EXPRESSION TAG	UNP B1UXN2
A	-15	HIS	-	EXPRESSION TAG	UNP B1UXN2
A	-14	HIS	-	EXPRESSION TAG	UNP B1UXN2
A	-13	HIS	-	EXPRESSION TAG	UNP B1UXN2
A	-12	HIS	-	EXPRESSION TAG	UNP B1UXN2
A	-11	HIS	-	EXPRESSION TAG	UNP B1UXN2
A	-10	HIS	-	EXPRESSION TAG	UNP B1UXN2
A	-9	SER	-	EXPRESSION TAG	UNP B1UXN2
A	-8	SER	-	EXPRESSION TAG	UNP B1UXN2
A	-7	GLY	-	EXPRESSION TAG	UNP B1UXN2
A	-6	LEU	-	EXPRESSION TAG	UNP B1UXN2
A	-5	VAL	-	EXPRESSION TAG	UNP B1UXN2
A	-4	PRO	-	EXPRESSION TAG	UNP B1UXN2
A	-3	ARG	-	EXPRESSION TAG	UNP B1UXN2
A	-2	GLY	-	EXPRESSION TAG	UNP B1UXN2
A	-1	SER	-	EXPRESSION TAG	UNP B1UXN2
A	0	HIS	-	EXPRESSION TAG	UNP B1UXN2
B	-19	MET	-	EXPRESSION TAG	UNP B1UXN2
B	-18	GLY	-	EXPRESSION TAG	UNP B1UXN2
B	-17	SER	-	EXPRESSION TAG	UNP B1UXN2
B	-16	SER	-	EXPRESSION TAG	UNP B1UXN2
B	-15	HIS	-	EXPRESSION TAG	UNP B1UXN2

*Continued on next page...*

Continued from previous page...

Chain	Residue	Modelled	Actual	Comment	Reference
B	-14	HIS	-	EXPRESSION TAG	UNP B1UXN2
B	-13	HIS	-	EXPRESSION TAG	UNP B1UXN2
B	-12	HIS	-	EXPRESSION TAG	UNP B1UXN2
B	-11	HIS	-	EXPRESSION TAG	UNP B1UXN2
B	-10	HIS	-	EXPRESSION TAG	UNP B1UXN2
B	-9	SER	-	EXPRESSION TAG	UNP B1UXN2
B	-8	SER	-	EXPRESSION TAG	UNP B1UXN2
B	-7	GLY	-	EXPRESSION TAG	UNP B1UXN2
B	-6	LEU	-	EXPRESSION TAG	UNP B1UXN2
B	-5	VAL	-	EXPRESSION TAG	UNP B1UXN2
B	-4	PRO	-	EXPRESSION TAG	UNP B1UXN2
B	-3	ARG	-	EXPRESSION TAG	UNP B1UXN2
B	-2	GLY	-	EXPRESSION TAG	UNP B1UXN2
B	-1	SER	-	EXPRESSION TAG	UNP B1UXN2
B	0	HIS	-	EXPRESSION TAG	UNP B1UXN2

- Molecule 2 is 2-amino-6-(2-hydroxy-2-methylpropyl)-8-methyl-7,8-dihydropteridin-4(3H)-one (three-letter code: B61) (formula: C<sub>11</sub>H<sub>17</sub>N<sub>5</sub>O<sub>2</sub>).



Mol	Chain	Residues	Atoms				ZeroOcc	AltConf
2	A	1	Total	C	N	O	0	0
			18	11	5	2		
2	B	1	Total	C	N	O	0	0
			18	11	5	2		

- Molecule 3 is SULFATE ION (three-letter code: SO4) (formula: O<sub>4</sub>S).



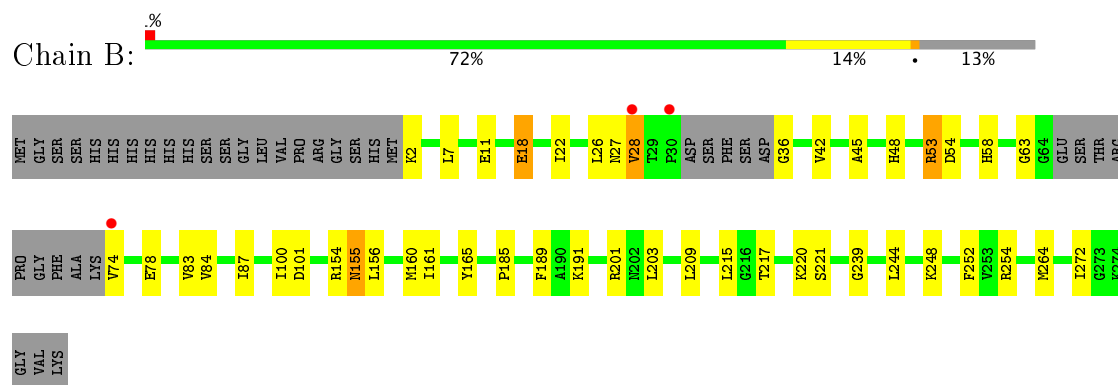
Mol	Chain	Residues	Atoms			ZeroOcc	AltConf
3	A	1	Total	O	S	0	0
			5	4	1		
3	A	1	Total	O	S	0	0
			5	4	1		
3	A	1	Total	O	S	0	0
			5	4	1		
3	A	1	Total	O	S	0	0
			5	4	1		
3	B	1	Total	O	S	0	0
			5	4	1		
3	B	1	Total	O	S	0	0
			5	4	1		
3	B	1	Total	O	S	0	0
			5	4	1		
3	B	1	Total	O	S	0	0
			5	4	1		
3	B	1	Total	O	S	0	0
			5	4	1		

- Molecule 4 is water.

Mol	Chain	Residues	Atoms		ZeroOcc	AltConf
4	A	77	Total	O	0	0
			77	77		
4	B	70	Total	O	0	0
			70	70		



- Molecule 1: Dihydropteroate synthase



## 4 Data and refinement statistics

Property	Value	Source
Space group	P 6 <sub>2</sub> 2 2	Depositor
Cell constants a, b, c, $\alpha$ , $\beta$ , $\gamma$	99.16 Å 99.16 Å 262.08 Å 90.00° 90.00° 120.00°	Depositor
Resolution (Å)	44.74 – 2.31 44.74 – 2.31	Depositor EDS
% Data completeness (in resolution range)	89.8 (44.74-2.31) 89.8 (44.74-2.31)	Depositor EDS
$R_{merge}$	(Not available)	Depositor
$R_{sym}$	0.11	Depositor
$\langle I/\sigma(I) \rangle$ <sup>1</sup>	4.50 (at 2.32 Å)	Xtriage
Refinement program	REFMAC 5.2.0019	Depositor
R, $R_{free}$	0.203 , 0.265 0.201 , 0.264	Depositor DCC
$R_{free}$ test set	1567 reflections (5.34%)	DCC
Wilson B-factor (Å <sup>2</sup> )	40.5	Xtriage
Anisotropy	0.846	Xtriage
Bulk solvent $k_{sol}$ (e/Å <sup>3</sup> ), $B_{sol}$ (Å <sup>2</sup> )	0.34 , 47.6	EDS
L-test for twinning <sup>2</sup>	$\langle  L  \rangle = 0.52$ , $\langle L^2 \rangle = 0.36$	Xtriage
Estimated twinning fraction	No twinning to report.	Xtriage
$F_o, F_c$ correlation	0.95	EDS
Total number of atoms	4335	wwPDB-VP
Average B, all atoms (Å <sup>2</sup> )	64.0	wwPDB-VP

Xtriage's analysis on translational NCS is as follows: *The analyses of the Patterson function reveals a significant off-origin peak that is 46.35 % of the origin peak, indicating pseudo translational symmetry. The chance of finding a peak of this or larger height randomly in a structure without pseudo translational symmetry is equal to 1.1592e-04. The detected translational NCS is most likely also responsible for the elevated intensity ratio.*

<sup>1</sup> Intensities estimated from amplitudes.

<sup>2</sup> Theoretical values of  $\langle |L| \rangle$ ,  $\langle L^2 \rangle$  for acentric reflections are 0.5, 0.333 respectively for untwinned datasets, and 0.375, 0.2 for perfectly twinned datasets.



## 5 Model quality

### 5.1 Standard geometry

Bond lengths and bond angles in the following residue types are not validated in this section: B61, SO4

The Z score for a bond length (or angle) is the number of standard deviations the observed value is removed from the expected value. A bond length (or angle) with  $|Z| > 5$  is considered an outlier worth inspection. RMSZ is the root-mean-square of all Z scores of the bond lengths (or angles).

Mol	Chain	Bond lengths		Bond angles	
		RMSZ	# Z  >5	RMSZ	# Z  >5
1	A	1.09	8/2115 (0.4%)	1.02	9/2853 (0.3%)
1	B	1.04	4/2055 (0.2%)	0.96	4/2770 (0.1%)
All	All	1.07	12/4170 (0.3%)	0.99	13/5623 (0.2%)

Chiral center outliers are detected by calculating the chiral volume of a chiral center and verifying if the center is modelled as a planar moiety or with the opposite hand. A planarity outlier is detected by checking planarity of atoms in a peptide group, atoms in a mainchain group or atoms of a sidechain that are expected to be planar.

Mol	Chain	#Chirality outliers	#Planarity outliers
1	B	0	1

All (12) bond length outliers are listed below:

Mol	Chain	Res	Type	Atoms	Z	Observed(Å)	Ideal(Å)
1	A	39	TYR	CE1-CZ	-9.92	1.25	1.38
1	A	93	GLU	CD-OE2	7.86	1.34	1.25
1	B	36	GLY	N-CA	7.31	1.57	1.46
1	A	194	GLU	CG-CD	7.18	1.62	1.51
1	A	39	TYR	CG-CD2	-6.82	1.30	1.39
1	B	18	GLU	CG-CD	6.77	1.62	1.51
1	A	40	ASN	CB-CG	-6.62	1.35	1.51
1	A	39	TYR	CG-CD1	6.21	1.47	1.39
1	A	93	GLU	CD-OE1	6.20	1.32	1.25
1	B	42	VAL	CB-CG1	-5.57	1.41	1.52
1	A	39	TYR	C-O	5.46	1.33	1.23
1	B	18	GLU	CD-OE2	5.38	1.31	1.25

All (13) bond angle outliers are listed below:

Mol	Chain	Res	Type	Atoms	Z	Observed(°)	Ideal(°)
1	A	148	ARG	NE-CZ-NH2	-11.31	114.64	120.30
1	A	148	ARG	NE-CZ-NH1	9.76	125.18	120.30
1	A	53	ARG	NE-CZ-NH1	8.46	124.53	120.30
1	A	201	ARG	NE-CZ-NH1	7.45	124.02	120.30
1	A	53	ARG	NE-CZ-NH2	-7.20	116.70	120.30
1	B	53	ARG	NE-CZ-NH2	-6.92	116.84	120.30
1	B	201	ARG	NE-CZ-NH1	6.81	123.70	120.30
1	B	201	ARG	NE-CZ-NH2	-6.09	117.25	120.30
1	B	254	ARG	NE-CZ-NH2	-5.95	117.33	120.30
1	A	39	TYR	CZ-CE2-CD2	5.77	124.99	119.80
1	A	42	VAL	CG1-CB-CG2	-5.69	101.80	110.90
1	A	201	ARG	NE-CZ-NH2	-5.49	117.56	120.30
1	A	203	LEU	CB-CG-CD1	-5.05	102.42	111.00

There are no chirality outliers.

All (1) planarity outliers are listed below:

Mol	Chain	Res	Type	Group
1	B	2	LYS	Peptide

## 5.2 Too-close contacts ⓘ

In the following table, the Non-H and H(model) columns list the number of non-hydrogen atoms and hydrogen atoms in the chain respectively. The H(added) column lists the number of hydrogen atoms added and optimized by MolProbity. The Clashes column lists the number of clashes within the asymmetric unit, whereas Symm-Clashes lists symmetry related clashes.

Mol	Chain	Non-H	H(model)	H(added)	Clashes	Symm-Clashes
1	A	2082	0	2078	17	0
1	B	2020	0	2044	20	0
2	A	18	0	17	1	0
2	B	18	0	17	1	0
3	A	20	0	0	0	0
3	B	30	0	0	0	0
4	A	77	0	0	0	0
4	B	70	0	0	0	0
All	All	4335	0	4156	37	0

The all-atom clashscore is defined as the number of clashes found per 1000 atoms (including hydrogen atoms). The all-atom clashscore for this structure is 4.

All (37) close contacts within the same asymmetric unit are listed below, sorted by their clash magnitude.

Atom-1	Atom-2	Interatomic distance (Å)	Clash overlap (Å)
1:A:84:VAL:O	1:A:88:GLN:HG3	1.86	0.74
1:B:22:ILE:H	1:B:58:HIS:HD1	1.42	0.68
1:B:185:PRO:HG3	1:B:203:LEU:HD21	1.87	0.56
1:A:75:SER:OG	1:A:78:GLU:HG2	2.05	0.55
1:B:156:LEU:O	1:B:160:MET:HG3	2.07	0.55
1:A:53:ARG:HD2	1:A:54:ASP:OD1	2.09	0.52
1:A:214:LEU:HD12	1:A:252:PHE:HB2	1.91	0.52
1:A:203:LEU:HD11	1:A:215:LEU:HD13	1.93	0.51
1:A:214:LEU:HD12	1:A:252:PHE:CB	2.40	0.51
1:B:27:ASN:HB2	1:B:48:HIS:ND1	2.25	0.50
1:A:7:LEU:HD11	1:A:182:ILE:HD11	1.94	0.50
1:A:220:LYS:HE2	2:A:901:B61:H17	1.94	0.50
1:B:63:GLY:HA2	1:B:101:ASP:HB3	1.92	0.50
1:B:220:LYS:HE2	2:B:902:B61:H17	1.93	0.50
1:B:161:ILE:HG23	1:B:209:LEU:HD21	1.94	0.48
1:B:165[B]:TYR:CE2	1:B:209:LEU:HD22	2.48	0.48
1:B:189:PHE:O	1:B:191:LYS:HG3	2.14	0.48
1:A:5:TYR:CD1	1:A:179:GLU:HG2	2.50	0.47
1:A:218:SER:HA	1:A:238:THR:HG23	1.95	0.47
1:A:31:ASP:OD2	1:A:38:SER:HB3	2.15	0.46
1:A:160:MET:HB2	1:A:160:MET:HE2	1.65	0.46
1:B:53:ARG:HD2	1:B:54:ASP:OD1	2.17	0.45
1:B:26:LEU:HD11	1:B:45:ALA:O	2.17	0.45
1:A:52:MET:HE3	1:A:60:ILE:HD12	1.98	0.45
1:A:64:GLY:HA3	1:A:79:GLU:HG3	1.98	0.44
1:B:74:VAL:HG13	1:B:78:GLU:HB2	2.00	0.44
1:B:28:VAL:CG1	1:B:28:VAL:O	2.66	0.44
1:B:244:LEU:HD11	1:B:248:LYS:HE2	2.00	0.43
1:B:239:GLY:HA3	1:B:264:MET:HE3	2.00	0.43
1:B:26:LEU:HD21	1:B:45:ALA:HB1	2.00	0.43
1:A:19:LYS:HE3	1:A:58:HIS:NE2	2.34	0.43
1:A:80:ILE:HG21	1:A:110:GLN:HE21	1.84	0.42
1:B:87:ILE:HD11	1:B:100:ILE:HD13	2.02	0.41
1:B:28:VAL:HG13	1:B:28:VAL:O	2.19	0.41
1:B:155:ASN:HD22	1:B:155:ASN:C	2.24	0.41
1:B:215:LEU:HG	1:B:217:THR:HG23	2.03	0.41
1:A:28:VAL:HG22	1:A:86:MET:SD	2.61	0.41

There are no symmetry-related clashes.

## 5.3 Torsion angles

### 5.3.1 Protein backbone

In the following table, the Percentiles column shows the percent Ramachandran outliers of the chain as a percentile score with respect to all X-ray entries followed by that with respect to entries of similar resolution.

The Analysed column shows the number of residues for which the backbone conformation was analysed, and the total number of residues.

Mol	Chain	Analysed	Favoured	Allowed	Outliers	Percentiles	
1	A	267/297 (90%)	261 (98%)	6 (2%)	0	100	100
1	B	255/297 (86%)	250 (98%)	5 (2%)	0	100	100
All	All	522/594 (88%)	511 (98%)	11 (2%)	0	100	100

There are no Ramachandran outliers to report.

### 5.3.2 Protein sidechains

In the following table, the Percentiles column shows the percent sidechain outliers of the chain as a percentile score with respect to all X-ray entries followed by that with respect to entries of similar resolution.

The Analysed column shows the number of residues for which the sidechain conformation was analysed, and the total number of residues.

Mol	Chain	Analysed	Rotameric	Outliers	Percentiles	
1	A	221/247 (90%)	214 (97%)	7 (3%)	44	59
1	B	217/247 (88%)	206 (95%)	11 (5%)	28	37
All	All	438/494 (89%)	420 (96%)	18 (4%)	35	48

All (18) residues with a non-rotameric sidechain are listed below:

Mol	Chain	Res	Type
1	A	7	LEU
1	A	28	VAL
1	A	32	SER
1	A	38	SER
1	A	95	LYS
1	A	148	ARG
1	A	160	MET
1	B	7	LEU

*Continued on next page...*

*Continued from previous page...*

Mol	Chain	Res	Type
1	B	11	GLU
1	B	18	GLU
1	B	28	VAL
1	B	83	VAL
1	B	84	VAL
1	B	154	ARG
1	B	155	ASN
1	B	221	SER
1	B	252	PHE
1	B	272	ILE

Some sidechains can be flipped to improve hydrogen bonding and reduce clashes. All (4) such sidechains are listed below:

Mol	Chain	Res	Type
1	A	110	GLN
1	A	155	ASN
1	B	88	GLN
1	B	155	ASN

### 5.3.3 RNA ⓘ

There are no RNA molecules in this entry.

## 5.4 Non-standard residues in protein, DNA, RNA chains ⓘ

There are no non-standard protein/DNA/RNA residues in this entry.

## 5.5 Carbohydrates ⓘ

There are no carbohydrates in this entry.

## 5.6 Ligand geometry ⓘ

12 ligands are modelled in this entry.

In the following table, the Counts columns list the number of bonds (or angles) for which Mogul statistics could be retrieved, the number of bonds (or angles) that are observed in the model and the number of bonds (or angles) that are defined in the Chemical Component Dictionary. The Link column lists molecule types, if any, to which the group is linked. The Z score for a bond

length (or angle) is the number of standard deviations the observed value is removed from the expected value. A bond length (or angle) with  $|Z| > 2$  is considered an outlier worth inspection. RMSZ is the root-mean-square of all Z scores of the bond lengths (or angles).

Mol	Type	Chain	Res	Link	Bond lengths			Bond angles		
					Counts	RMSZ	# Z  > 2	Counts	RMSZ	# Z  > 2
3	SO4	A	278	-	4,4,4	0.34	0	6,6,6	0.82	0
3	SO4	A	279	-	4,4,4	0.31	0	6,6,6	0.45	0
3	SO4	A	280	-	4,4,4	0.31	0	6,6,6	0.61	0
3	SO4	A	281	-	4,4,4	0.42	0	6,6,6	0.53	0
2	B61	A	901	-	16,19,19	2.46	5 (31%)	17,29,29	3.01	12 (70%)
3	SO4	B	278	-	4,4,4	0.25	0	6,6,6	0.69	0
3	SO4	B	279	-	4,4,4	0.33	0	6,6,6	0.29	0
3	SO4	B	280	-	4,4,4	0.27	0	6,6,6	0.26	0
3	SO4	B	281	-	4,4,4	0.27	0	6,6,6	0.42	0
3	SO4	B	282	-	4,4,4	0.30	0	6,6,6	0.29	0
3	SO4	B	283	-	4,4,4	0.21	0	6,6,6	1.14	1 (16%)
2	B61	B	902	-	16,19,19	2.18	3 (18%)	17,29,29	3.26	10 (58%)

In the following table, the Chirals column lists the number of chiral outliers, the number of chiral centers analysed, the number of these observed in the model and the number defined in the Chemical Component Dictionary. Similar counts are reported in the Torsion and Rings columns. '-' means no outliers of that kind were identified.

Mol	Type	Chain	Res	Link	Chirals	Torsions	Rings
3	SO4	A	278	-	-	0/0/0/0	0/0/0/0
3	SO4	A	279	-	-	0/0/0/0	0/0/0/0
3	SO4	A	280	-	-	0/0/0/0	0/0/0/0
3	SO4	A	281	-	-	0/0/0/0	0/0/0/0
2	B61	A	901	-	-	0/3/17/17	0/2/2/2
3	SO4	B	278	-	-	0/0/0/0	0/0/0/0
3	SO4	B	279	-	-	0/0/0/0	0/0/0/0
3	SO4	B	280	-	-	0/0/0/0	0/0/0/0
3	SO4	B	281	-	-	0/0/0/0	0/0/0/0
3	SO4	B	282	-	-	0/0/0/0	0/0/0/0
3	SO4	B	283	-	-	0/0/0/0	0/0/0/0
2	B61	B	902	-	-	0/3/17/17	0/2/2/2

All (8) bond length outliers are listed below:

Mol	Chain	Res	Type	Atoms	Z	Observed(Å)	Ideal(Å)
2	A	901	B61	C7-N6	2.02	1.36	1.34
2	B	902	B61	C4-C7	2.05	1.47	1.41
2	A	901	B61	O24-C23	2.72	1.51	1.44

*Continued on next page...*

*Continued from previous page...*

Mol	Chain	Res	Type	Atoms	Z	Observed(Å)	Ideal(Å)
2	A	901	B61	C4-C7	2.79	1.49	1.41
2	B	902	B61	C11-N12	4.10	1.49	1.45
2	A	901	B61	C11-N12	4.54	1.50	1.45
2	B	902	B61	C10-N9	6.19	1.36	1.28
2	A	901	B61	C10-N9	7.08	1.37	1.28

All (23) bond angle outliers are listed below:

Mol	Chain	Res	Type	Atoms	Z	Observed(°)	Ideal(°)
2	B	902	B61	C17-C10-N9	-4.96	109.24	118.41
2	B	902	B61	C13-N12-C7	-3.80	114.03	119.89
2	B	902	B61	C4-C1-N3	-3.75	118.14	123.48
2	A	901	B61	C13-N12-C7	-3.72	114.15	119.89
2	A	901	B61	C4-C1-N3	-3.44	118.58	123.48
2	A	901	B61	C26-C23-C25	-3.08	103.56	110.42
2	B	902	B61	N3-C5-N6	-2.67	121.12	125.45
2	A	901	B61	N3-C5-N6	-2.40	121.56	125.45
2	A	901	B61	C17-C10-N9	-2.23	114.28	118.41
2	A	901	B61	C25-C23-C17	-2.02	103.59	110.43
3	B	283	SO4	O4-S-O3	2.18	118.76	108.96
2	B	902	B61	N8-C5-N6	2.23	120.80	117.24
2	A	901	B61	O24-C23-C25	2.55	116.83	108.00
2	A	901	B61	C5-N6-C7	2.58	121.19	113.95
2	A	901	B61	N8-C5-N6	2.59	121.38	117.24
2	B	902	B61	C5-N6-C7	3.23	123.01	113.95
2	A	901	B61	C23-C17-C10	3.46	120.68	116.08
2	B	902	B61	C1-N3-C5	4.58	122.64	116.06
2	B	902	B61	C13-N12-C11	4.70	121.70	116.25
2	B	902	B61	C1-C4-C7	4.96	117.78	114.50
2	A	901	B61	C1-N3-C5	5.34	123.75	116.06
2	B	902	B61	C23-C17-C10	5.62	123.56	116.08
2	A	901	B61	C13-N12-C11	6.24	123.48	116.25

There are no chirality outliers.

There are no torsion outliers.

There are no ring outliers.

2 monomers are involved in 2 short contacts:

Mol	Chain	Res	Type	Clashes	Symm-Clashes
2	A	901	B61	1	0
2	B	902	B61	1	0

## 5.7 Other polymers [i](#)

There are no such residues in this entry.

## 5.8 Polymer linkage issues [i](#)

There are no chain breaks in this entry.



## 6 Fit of model and data ⓘ

### 6.1 Protein, DNA and RNA chains ⓘ

In the following table, the column labelled ‘#RSRZ> 2’ contains the number (and percentage) of RSRZ outliers, followed by percent RSRZ outliers for the chain as percentile scores relative to all X-ray entries and entries of similar resolution. The OWAB column contains the minimum, median, 95<sup>th</sup> percentile and maximum values of the occupancy-weighted average B-factor per residue. The column labelled ‘Q< 0.9’ lists the number of (and percentage) of residues with an average occupancy less than 0.9.

Mol	Chain	Analysed	<RSRZ>	#RSRZ>2	OWAB(Å <sup>2</sup> )	Q<0.9
1	A	270/297 (90%)	0.33	14 (5%) 28 35	49, 63, 83, 94	0
1	B	259/297 (87%)	0.15	3 (1%) 79 83	50, 63, 78, 98	0
All	All	529/594 (89%)	0.24	17 (3%) 48 55	49, 63, 82, 98	0

All (17) RSRZ outliers are listed below:

Mol	Chain	Res	Type	RSRZ
1	A	35	ASP	4.6
1	A	39	TYR	3.1
1	A	66	SER	3.0
1	B	28	VAL	3.0
1	A	72	ALA	2.9
1	B	74	VAL	2.7
1	A	215	LEU	2.6
1	A	8	ARG	2.5
1	A	73	LYS	2.5
1	A	206	LEU	2.4
1	B	30	PRO	2.3
1	A	74	VAL	2.3
1	A	151	MET	2.3
1	A	214	LEU	2.2
1	A	78	GLU	2.2
1	A	203	LEU	2.1
1	A	1	MET	2.1

### 6.2 Non-standard residues in protein, DNA, RNA chains ⓘ

There are no non-standard protein/DNA/RNA residues in this entry.

## 6.3 Carbohydrates [i](#)

There are no carbohydrates in this entry.

## 6.4 Ligands [i](#)

In the following table, the Atoms column lists the number of modelled atoms in the group and the number defined in the chemical component dictionary. LLDF column lists the quality of electron density of the group with respect to its neighbouring residues in protein, DNA or RNA chains. The B-factors column lists the minimum, median, 95<sup>th</sup> percentile and maximum values of B factors of atoms in the group. The column labelled 'Q< 0.9' lists the number of atoms with occupancy less than 0.9.

Mol	Type	Chain	Res	Atoms	RSCC	RSR	LLDF	B-factors(Å <sup>2</sup> )	Q<0.9
2	B61	B	902	18/18	0.95	0.20	2.01	47,50,65,65	0
2	B61	A	901	18/18	0.93	0.12	-1.35	48,50,66,67	0
3	SO4	B	278	5/5	0.96	0.24	-	83,85,87,87	0
3	SO4	A	281	5/5	0.92	0.33	-	104,105,107,107	0
3	SO4	A	279	5/5	0.90	0.19	-	99,102,103,103	0
3	SO4	B	279	5/5	0.89	0.34	-	109,110,111,111	0
3	SO4	A	278	5/5	0.95	0.23	-	83,84,85,86	0
3	SO4	A	280	5/5	0.89	0.33	-	93,94,96,97	0
3	SO4	B	282	5/5	0.84	0.64	-	114,115,115,116	0
3	SO4	B	283	5/5	0.93	0.32	-	86,90,90,91	0
3	SO4	B	281	5/5	0.89	0.26	-	113,114,115,115	0
3	SO4	B	280	5/5	0.88	0.37	-	126,126,127,127	0

## 6.5 Other polymers [i](#)

There are no such residues in this entry.