



Full wwPDB X-ray Structure Validation Report ⓘ

Feb 13, 2017 – 07:40 pm GMT

PDB ID : 4H4D
Title : IspH in complex with (E)-4-amino-3-methylbut-2-enyl diphosphate
Authors : Span, I.; Eisenreich, W.; Jauch, J.; Bacher, A.; Groll, M.
Deposited on : 2012-09-17
Resolution : 1.35 Å(reported)

This is a Full wwPDB X-ray Structure Validation Report for a publicly released PDB entry.

We welcome your comments at validation@mail.wwpdb.org

A user guide is available at

<http://wwpdb.org/validation/2016/XrayValidationReportHelp>

with specific help available everywhere you see the ⓘ symbol.

The following versions of software and data (see [references ⓘ](#)) were used in the production of this report:

MolProbity : 4.02b-467
Mogul : 1.7.2 (RC1), CSD as538be (2017)
Xtriage (Phenix) : 1.9-1692
EDS : trunk28620
Percentile statistics : 20161228.v01 (using entries in the PDB archive December 28th 2016)
Refmac : 5.8.0135
CCP4 : 6.5.0
Ideal geometry (proteins) : Engh & Huber (2001)
Ideal geometry (DNA, RNA) : Parkinson et al. (1996)
Validation Pipeline (wwPDB-VP) : recalc28949

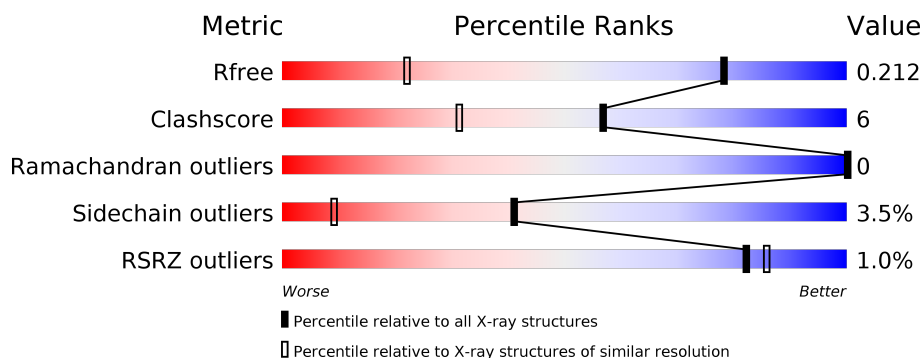
1 Overall quality at a glance

The following experimental techniques were used to determine the structure:

X-RAY DIFFRACTION

The reported resolution of this entry is 1.35 Å.

Percentile scores (ranging between 0-100) for global validation metrics of the entry are shown in the following graphic. The table shows the number of entries on which the scores are based.



Metric	Whole archive (#Entries)	Similar resolution (#Entries, resolution range(Å))
R_{free}	100719	1024 (1.38-1.34)
Clashscore	112137	1063 (1.38-1.34)
Ramachandran outliers	110173	1048 (1.38-1.34)
Sidechain outliers	110143	1048 (1.38-1.34)
RSRZ outliers	101464	1025 (1.38-1.34)

The table below summarises the geometric issues observed across the polymeric chains and their fit to the electron density. The red, orange, yellow and green segments on the lower bar indicate the fraction of residues that contain outliers for ≥ 3 , 2, 1 and 0 types of geometric quality criteria. A grey segment represents the fraction of residues that are not modelled. The numeric value for each fraction is indicated below the corresponding segment, with a dot representing fractions $\leq 5\%$. The upper red bar (where present) indicates the fraction of residues that have poor fit to the electron density. The numeric value is given above the bar.

Mol	Chain	Length	Quality of chain
1	A	323	
1	B	323	

2 Entry composition

There are 4 unique types of molecules in this entry. The entry contains 5550 atoms, of which 0 are hydrogens and 0 are deuteriums.

In the tables below, the ZeroOcc column contains the number of atoms modelled with zero occupancy, the AltConf column contains the number of residues with at least one atom in alternate conformation and the Trace column contains the number of residues modelled with at most 2 atoms.

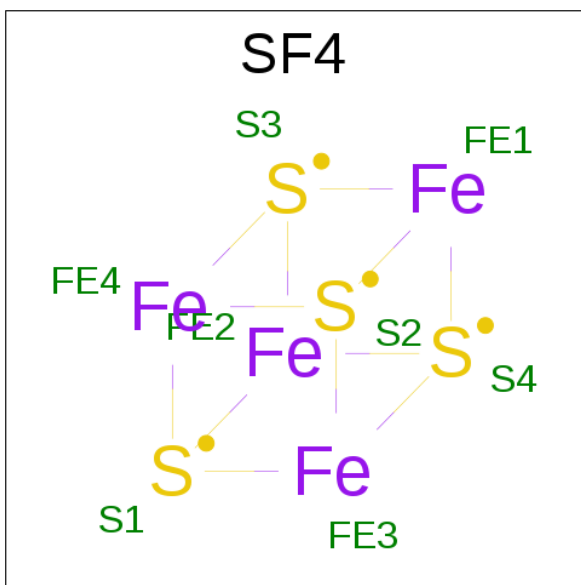
- Molecule 1 is a protein called 4-hydroxy-3-methylbut-2-enyl diphosphate reductase.

Mol	Chain	Residues	Atoms					ZeroOcc	AltConf	Trace
1	A	309	Total	C	N	O	S	0	0	0
			2383	1487	427	459	10			
1	B	310	Total	C	N	O	S	0	0	0
			2390	1492	428	460	10			

There are 16 discrepancies between the modelled and reference sequences:

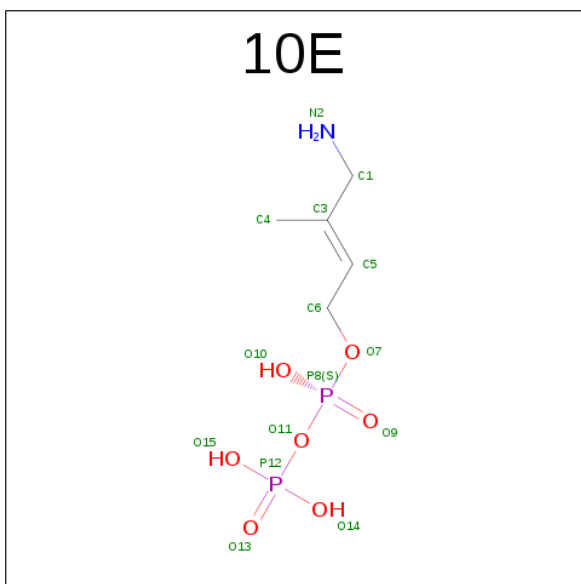
Chain	Residue	Modelled	Actual	Comment	Reference
A	-7	HIS	-	EXPRESSION TAG	UNP P62623
A	-6	HIS	-	EXPRESSION TAG	UNP P62623
A	-5	HIS	-	EXPRESSION TAG	UNP P62623
A	-4	HIS	-	EXPRESSION TAG	UNP P62623
A	-3	HIS	-	EXPRESSION TAG	UNP P62623
A	-2	HIS	-	EXPRESSION TAG	UNP P62623
A	-1	GLY	-	EXPRESSION TAG	UNP P62623
A	0	SER	-	EXPRESSION TAG	UNP P62623
B	-7	HIS	-	EXPRESSION TAG	UNP P62623
B	-6	HIS	-	EXPRESSION TAG	UNP P62623
B	-5	HIS	-	EXPRESSION TAG	UNP P62623
B	-4	HIS	-	EXPRESSION TAG	UNP P62623
B	-3	HIS	-	EXPRESSION TAG	UNP P62623
B	-2	HIS	-	EXPRESSION TAG	UNP P62623
B	-1	GLY	-	EXPRESSION TAG	UNP P62623
B	0	SER	-	EXPRESSION TAG	UNP P62623

- Molecule 2 is IRON/SULFUR CLUSTER (three-letter code: SF4) (formula: Fe₄S₄).



Mol	Chain	Residues	Atoms			ZeroOcc	AltConf
2	A	1	Total	Fe	S	0	0
			8	4	4		
2	B	1	Total	Fe	S	0	0
			8	4	4		

- Molecule 3 is (2E)-4-AMINO-3-METHYLBUT-2-EN-1-YL TRIHYDROGEN DIPHOSPHATE (three-letter code: 10E) (formula: $C_5H_{13}NO_7P_2$).



Mol	Chain	Residues	Atoms				ZeroOcc	AltConf
3	A	1	Total	C	N	O	P	0
			15	5	1	7	2	0

Continued on next page...

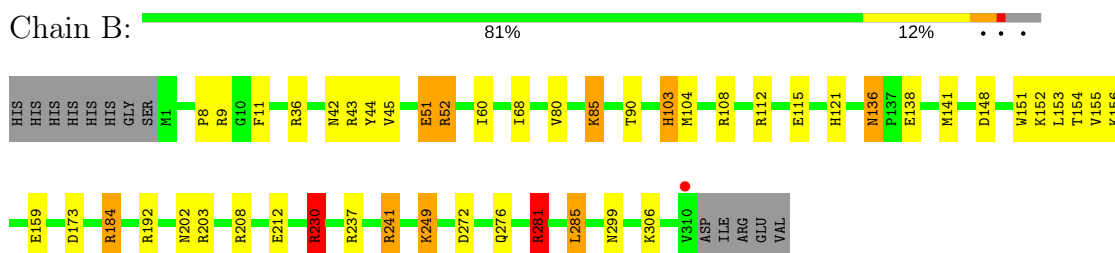
Continued from previous page...

Mol	Chain	Residues	Atoms					ZeroOcc	AltConf
3	B	1	Total	C	N	O	P	0	0
			15	5	1	7	2		

- Molecule 4 is water.

Mol	Chain	Residues	Atoms		ZeroOcc	AltConf
4	A	374	Total	O	0	0
			374	374		
4	B	357	Total	O	0	0
			357	357		

- Molecule 1: 4-hydroxy-3-methylbut-2-enyl diphosphate reductase



4 Data and refinement statistics

Property	Value	Source
Space group	P 21 21 21	Depositor
Cell constants a, b, c, α , β , γ	71.32Å 80.71Å 112.11Å 90.00° 90.00° 90.00°	Depositor
Resolution (Å)	10.00 – 1.35 48.24 – 1.35	Depositor EDS
% Data completeness (in resolution range)	97.6 (10.00-1.35) 97.8 (48.24-1.35)	Depositor EDS
R_{merge}	(Not available)	Depositor
R_{sym}	0.06	Depositor
$\langle I/\sigma(I) \rangle$ ¹	3.23 (at 1.35Å)	Xtriage
Refinement program	REFMAC 5.7.0029	Depositor
R, R_{free}	0.191 , 0.214 0.190 , 0.212	Depositor DCC
R_{free} test set	6957 reflections (5.26%)	DCC
Wilson B-factor (Å ²)	12.7	Xtriage
Anisotropy	0.698	Xtriage
Bulk solvent k_{sol} (e/Å ³), B_{sol} (Å ²)	0.33 , 38.9	EDS
L-test for twinning ²	$\langle L \rangle = 0.48$, $\langle L^2 \rangle = 0.31$	Xtriage
Estimated twinning fraction	No twinning to report.	Xtriage
F_o, F_c correlation	0.96	EDS
Total number of atoms	5550	wwPDB-VP
Average B, all atoms (Å ²)	19.0	wwPDB-VP

Xtriage's analysis on translational NCS is as follows: *The analyses of the Patterson function reveals a significant off-origin peak that is 46.42 % of the origin peak, indicating pseudo translational symmetry. The chance of finding a peak of this or larger height randomly in a structure without pseudo translational symmetry is equal to 1.1482e-04. The detected translational NCS is most likely also responsible for the elevated intensity ratio.*

¹ Intensities estimated from amplitudes.

² Theoretical values of $\langle |L| \rangle$, $\langle L^2 \rangle$ for acentric reflections are 0.5, 0.333 respectively for untwinned datasets, and 0.375, 0.2 for perfectly twinned datasets.

5 Model quality

5.1 Standard geometry

Bond lengths and bond angles in the following residue types are not validated in this section: SF4, 10E

The Z score for a bond length (or angle) is the number of standard deviations the observed value is removed from the expected value. A bond length (or angle) with $|Z| > 5$ is considered an outlier worth inspection. RMSZ is the root-mean-square of all Z scores of the bond lengths (or angles).

Mol	Chain	Bond lengths		Bond angles	
		RMSZ	$\# Z > 5$	RMSZ	$\# Z > 5$
1	A	1.10	5/2418 (0.2%)	1.54	28/3273 (0.9%)
1	B	1.06	2/2425 (0.1%)	1.54	29/3283 (0.9%)
All	All	1.08	7/4843 (0.1%)	1.54	57/6556 (0.9%)

All (7) bond length outliers are listed below:

Mol	Chain	Res	Type	Atoms	Z	Observed(Å)	Ideal(Å)
1	B	151	TRP	CB-CG	11.59	1.71	1.50
1	A	138	GLU	CD-OE1	6.93	1.33	1.25
1	A	162	SER	CB-OG	-6.67	1.33	1.42
1	B	184	ARG	CZ-NH2	5.70	1.40	1.33
1	A	34	TYR	CE1-CZ	-5.23	1.31	1.38
1	A	133	GLN	CD-OE1	5.14	1.35	1.24
1	A	230	ARG	CD-NE	-5.04	1.37	1.46

All (57) bond angle outliers are listed below:

Mol	Chain	Res	Type	Atoms	Z	Observed(°)	Ideal(°)
1	A	230	ARG	NE-CZ-NH1	-38.32	101.14	120.30
1	A	230	ARG	NE-CZ-NH2	33.70	137.15	120.30
1	B	281	ARG	NE-CZ-NH1	25.75	133.17	120.30
1	B	230	ARG	NE-CZ-NH1	-25.52	107.54	120.30
1	B	230	ARG	NE-CZ-NH2	21.45	131.03	120.30
1	B	281	ARG	NE-CZ-NH2	-18.36	111.12	120.30
1	B	184	ARG	NE-CZ-NH1	-15.08	112.76	120.30
1	B	9	ARG	NE-CZ-NH1	13.47	127.03	120.30
1	B	52	ARG	NE-CZ-NH2	12.13	126.36	120.30
1	A	230	ARG	CD-NE-CZ	11.98	140.37	123.60
1	B	52	ARG	NE-CZ-NH1	-10.02	115.29	120.30
1	A	43	ARG	NE-CZ-NH2	-9.53	115.53	120.30

Continued on next page...

Continued from previous page...

Mol	Chain	Res	Type	Atoms	Z	Observed(°)	Ideal(°)
1	B	230	ARG	CD-NE-CZ	9.23	136.53	123.60
1	A	17	ARG	NE-CZ-NH2	9.10	124.85	120.30
1	B	11	PHE	CB-CG-CD1	9.09	127.16	120.80
1	A	203	ARG	NE-CZ-NH1	-8.96	115.82	120.30
1	B	230	ARG	CG-CD-NE	-8.86	93.19	111.80
1	A	173	ASP	CB-CG-OD1	8.83	126.25	118.30
1	B	184	ARG	NE-CZ-NH2	8.52	124.56	120.30
1	A	230	ARG	CG-CD-NE	-8.37	94.23	111.80
1	B	141	MET	CG-SD-CE	8.27	113.44	100.20
1	A	17	ARG	NE-CZ-NH1	-8.26	116.17	120.30
1	B	281	ARG	CD-NE-CZ	8.01	134.81	123.60
1	B	192	ARG	NE-CZ-NH2	-7.87	116.37	120.30
1	A	281	ARG	NE-CZ-NH2	-7.75	116.42	120.30
1	B	241	ARG	NE-CZ-NH1	-7.57	116.51	120.30
1	B	43	ARG	NE-CZ-NH2	-7.45	116.58	120.30
1	B	9	ARG	NE-CZ-NH2	-7.43	116.58	120.30
1	A	9	ARG	NE-CZ-NH1	7.39	124.00	120.30
1	B	237	ARG	NE-CZ-NH2	7.38	123.99	120.30
1	A	141	MET	CG-SD-CE	7.16	111.66	100.20
1	B	285	LEU	CB-CG-CD1	6.62	122.26	111.00
1	B	203	ARG	NE-CZ-NH1	-6.31	117.15	120.30
1	A	43	ARG	NE-CZ-NH1	6.30	123.45	120.30
1	B	51	GLU	OE1-CD-OE2	-6.18	115.88	123.30
1	A	208	ARG	NE-CZ-NH1	-6.11	117.25	120.30
1	B	36	ARG	NE-CZ-NH2	-6.10	117.25	120.30
1	A	104	MET	CG-SD-CE	6.06	109.89	100.20
1	A	192	ARG	NE-CZ-NH2	-6.00	117.30	120.30
1	A	182	ARG	NE-CZ-NH1	-5.97	117.31	120.30
1	A	208	ARG	NE-CZ-NH2	5.80	123.20	120.30
1	A	16	ASP	CB-CG-OD2	-5.66	113.20	118.30
1	A	250	ASP	CB-CG-OD1	5.66	123.40	118.30
1	A	87	ARG	NE-CZ-NH2	-5.65	117.47	120.30
1	B	173	ASP	CB-CG-OD1	5.50	123.25	118.30
1	B	151	TRP	CA-CB-CG	5.49	124.14	113.70
1	B	285	LEU	CB-CG-CD2	5.42	120.22	111.00
1	A	50	ARG	NE-CZ-NH2	-5.40	117.60	120.30
1	A	138	GLU	CA-CB-CG	5.39	125.26	113.40
1	A	173	ASP	CB-CG-OD2	-5.32	113.51	118.30
1	A	176	ASP	CB-CG-OD2	-5.18	113.64	118.30
1	B	52	ARG	CD-NE-CZ	5.11	130.75	123.60
1	A	1	MET	CG-SD-CE	-5.09	92.06	100.20
1	A	11	PHE	CB-CG-CD1	5.06	124.34	120.80

Continued on next page...

Continued from previous page...

Mol	Chain	Res	Type	Atoms	Z	Observed(°)	Ideal(°)
1	B	11	PHE	CB-CG-CD2	-5.05	117.27	120.80
1	A	11	PHE	CB-CG-CD2	-5.04	117.27	120.80
1	B	237	ARG	NE-CZ-NH1	-5.01	117.79	120.30

There are no chirality outliers.

There are no planarity outliers.

5.2 Too-close contacts

In the following table, the Non-H and H(model) columns list the number of non-hydrogen atoms and hydrogen atoms in the chain respectively. The H(added) column lists the number of hydrogen atoms added and optimized by MolProbity. The Clashes column lists the number of clashes within the asymmetric unit, whereas Symm-Clashes lists symmetry related clashes.

Mol	Chain	Non-H	H(model)	H(added)	Clashes	Symm-Clashes
1	A	2383	0	2395	22	1
1	B	2390	0	2404	33	2
2	A	8	0	0	0	0
2	B	8	0	0	0	0
3	A	15	0	12	0	0
3	B	15	0	12	0	0
4	A	374	0	0	8	1
4	B	357	0	0	13	0
All	All	5550	0	4823	55	2

The all-atom clashscore is defined as the number of clashes found per 1000 atoms (including hydrogen atoms). The all-atom clashscore for this structure is 6.

All (55) close contacts within the same asymmetric unit are listed below, sorted by their clash magnitude.

Atom-1	Atom-2	Interatomic distance (Å)	Clash overlap (Å)
1:B:281:ARG:HD3	4:B:538:HOH:O	1.76	0.84
1:B:152:LYS:HD2	4:B:606:HOH:O	1.80	0.82
1:B:272:ASP:OD1	4:B:853:HOH:O	1.96	0.80
1:B:104:MET:CE	4:B:851:HOH:O	2.30	0.80
1:B:42:ASN:HD22	1:B:45:VAL:H	1.32	0.74
1:B:112:ARG:HG3	1:B:112:ARG:HH21	1.52	0.73
1:A:103:HIS:HD2	4:A:593:HOH:O	1.72	0.72
1:A:57:ILE:HD12	1:A:63:VAL:HG22	1.71	0.72
1:B:51:GLU:OE2	1:B:52:ARG:HD2	1.90	0.72

Continued on next page...

Continued from previous page...

Atom-1	Atom-2	Interatomic distance (Å)	Clash overlap (Å)
1:A:42:ASN:HD22	1:A:45:VAL:H	1.36	0.71
1:B:103:HIS:HD2	4:B:566:HOH:O	1.75	0.69
1:B:104:MET:HE2	4:B:851:HOH:O	1.91	0.68
1:A:57:ILE:CD1	1:A:63:VAL:HG22	2.26	0.65
1:A:276:GLN:NE2	4:A:635:HOH:O	2.30	0.65
1:B:104:MET:HE1	4:B:851:HOH:O	1.93	0.64
1:A:297:GLU:HG3	4:A:571:HOH:O	1.97	0.63
1:A:294:GLU:HG3	4:A:819:HOH:O	1.98	0.63
1:B:115:GLU:CD	1:B:155:VAL:HG13	2.20	0.62
1:B:121:HIS:HD2	4:B:678:HOH:O	1.82	0.62
4:A:571:HOH:O	1:B:306:LYS:HG2	2.00	0.60
1:A:136:ASN:HD22	1:A:136:ASN:C	2.06	0.58
1:A:1:MET:N	4:A:587:HOH:O	2.36	0.58
1:B:241:ARG:HD3	4:B:649:HOH:O	2.03	0.58
1:A:213:GLN:NE2	4:A:855:HOH:O	2.41	0.54
1:B:68:ILE:HD13	1:B:90:THR:HB	1.91	0.53
1:A:149:ASP:OD1	1:A:152:LYS:HE3	2.10	0.52
1:B:184:ARG:NE	4:B:849:HOH:O	2.28	0.51
1:A:149:ASP:HA	1:A:152:LYS:HE3	1.94	0.50
1:B:115:GLU:OE2	1:B:155:VAL:CG1	2.60	0.49
1:B:51:GLU:OE2	1:B:52:ARG:CD	2.57	0.49
1:A:103:HIS:HE1	4:A:503:HOH:O	1.95	0.49
1:A:136:ASN:ND2	1:A:138:GLU:H	2.10	0.49
1:B:8:PRO:HG2	1:B:202:ASN:HB3	1.95	0.49
1:A:42:ASN:HD21	1:A:44:TYR:HB3	1.77	0.49
1:B:112:ARG:CG	1:B:112:ARG:HH21	2.22	0.48
1:B:121:HIS:CD2	4:B:678:HOH:O	2.61	0.48
1:B:115:GLU:OE1	1:B:155:VAL:HG13	2.15	0.46
1:B:60:ILE:HD11	1:B:80:VAL:HG13	1.97	0.46
1:A:136:ASN:HD22	1:A:138:GLU:H	1.65	0.45
1:B:42:ASN:HD21	1:B:44:TYR:HB3	1.82	0.45
1:B:103:HIS:HE1	4:B:507:HOH:O	2.00	0.44
1:B:136:ASN:HD22	1:B:138:GLU:H	1.66	0.44
1:B:249:LYS:HE2	1:B:249:LYS:HB2	1.33	0.43
1:A:148:ASP:O	1:A:152:LYS:HG2	2.19	0.43
1:B:136:ASN:C	1:B:136:ASN:HD22	2.23	0.42
1:B:208:ARG:O	1:B:212:GLU:HG3	2.19	0.42
1:A:8:PRO:HG2	1:A:202:ASN:HB3	2.01	0.42
1:B:156:LYS:HE3	4:B:647:HOH:O	2.20	0.42
1:B:230:ARG:HD3	1:B:230:ARG:HA	1.76	0.42
1:A:217:VAL:O	1:A:242:ALA:HA	2.20	0.41

Continued on next page...

Continued from previous page...

Atom-1	Atom-2	Interatomic distance (Å)	Clash overlap (Å)
1:A:59:GLN:HE21	1:A:59:GLN:HB3	1.57	0.41
1:B:115:GLU:OE2	1:B:155:VAL:HG13	2.20	0.41
1:B:85:LYS:HB3	1:B:85:LYS:HE2	1.65	0.41
1:A:70:ILE:HA	1:A:92:PHE:O	2.19	0.41
1:A:34:TYR:HB3	1:A:57:ILE:HD11	2.04	0.40

All (2) symmetry-related close contacts are listed below. The label for Atom-2 includes the symmetry operator and encoded unit-cell translations to be applied.

Atom-1	Atom-2	Interatomic distance (Å)	Clash overlap (Å)
1:B:276:GLN:NE2	4:A:635:HOH:O[4_445]	2.09	0.11
1:A:253:GLU:OE1	1:B:52:ARG:NH1[4_545]	2.16	0.04

5.3 Torsion angles [i](#)

5.3.1 Protein backbone [i](#)

In the following table, the Percentiles column shows the percent Ramachandran outliers of the chain as a percentile score with respect to all X-ray entries followed by that with respect to entries of similar resolution.

The Analysed column shows the number of residues for which the backbone conformation was analysed, and the total number of residues.

Mol	Chain	Analysed	Favoured	Allowed	Outliers	Percentiles	
1	A	307/323 (95%)	303 (99%)	4 (1%)	0	100	100
1	B	308/323 (95%)	304 (99%)	4 (1%)	0	100	100
All	All	615/646 (95%)	607 (99%)	8 (1%)	0	100	100

There are no Ramachandran outliers to report.

5.3.2 Protein sidechains [i](#)

In the following table, the Percentiles column shows the percent sidechain outliers of the chain as a percentile score with respect to all X-ray entries followed by that with respect to entries of similar resolution.

The Analysed column shows the number of residues for which the sidechain conformation was analysed, and the total number of residues.

Mol	Chain	Analysed	Rotameric	Outliers	Percentiles	
1	A	257/270 (95%)	252 (98%)	5 (2%)	62	25
1	B	258/270 (96%)	245 (95%)	13 (5%)	28	3
All	All	515/540 (95%)	497 (96%)	18 (4%)	41	9

All (18) residues with a non-rotameric sidechain are listed below:

Mol	Chain	Res	Type
1	A	57	ILE
1	A	103	HIS
1	A	136	ASN
1	A	230	ARG
1	A	294	GLU
1	B	85	LYS
1	B	103	HIS
1	B	108	ARG
1	B	136	ASN
1	B	148	ASP
1	B	153	LEU
1	B	154	THR
1	B	159	GLU
1	B	230	ARG
1	B	249	LYS
1	B	281	ARG
1	B	285	LEU
1	B	299	ASN

Some sidechains can be flipped to improve hydrogen bonding and reduce clashes. All (19) such sidechains are listed below:

Mol	Chain	Res	Type
1	A	42	ASN
1	A	59	GLN
1	A	78	GLN
1	A	103	HIS
1	A	133	GLN
1	A	136	ASN
1	A	229	ASN
1	A	236	GLN
1	A	252	GLN
1	A	277	ASN
1	B	42	ASN
1	B	78	GLN

Continued on next page...

Continued from previous page...

Mol	Chain	Res	Type
1	B	103	HIS
1	B	121	HIS
1	B	133	GLN
1	B	136	ASN
1	B	277	ASN
1	B	283	GLN
1	B	299	ASN

5.3.3 RNA [i](#)

There are no RNA molecules in this entry.

5.4 Non-standard residues in protein, DNA, RNA chains [i](#)

There are no non-standard protein/DNA/RNA residues in this entry.

5.5 Carbohydrates [i](#)

There are no carbohydrates in this entry.

5.6 Ligand geometry [i](#)

4 ligands are modelled in this entry.

In the following table, the Counts columns list the number of bonds (or angles) for which Mogul statistics could be retrieved, the number of bonds (or angles) that are observed in the model and the number of bonds (or angles) that are defined in the chemical component dictionary. The Link column lists molecule types, if any, to which the group is linked. The Z score for a bond length (or angle) is the number of standard deviations the observed value is removed from the expected value. A bond length (or angle) with $|Z| > 2$ is considered an outlier worth inspection. RMSZ is the root-mean-square of all Z scores of the bond lengths (or angles).

Mol	Type	Chain	Res	Link	Bond lengths			Bond angles		
					Counts	RMSZ	$\# Z > 2$	Counts	RMSZ	$\# Z > 2$
2	SF4	A	401	1,3	0,12,12	0.00	-	0,24,24	0.00	-
3	10E	A	402	2	12,14,14	2.16	2 (16%)	11,20,20	1.04	0
2	SF4	B	401	1,3	0,12,12	0.00	-	0,24,24	0.00	-
3	10E	B	402	2	12,14,14	1.07	1 (8%)	11,20,20	1.43	3 (27%)

In the following table, the Chirals column lists the number of chiral outliers, the number of chiral

centers analysed, the number of these observed in the model and the number defined in the chemical component dictionary. Similar counts are reported in the Torsion and Rings columns. '-' means no outliers of that kind were identified.

Mol	Type	Chain	Res	Link	Chirals	Torsions	Rings
2	SF4	A	401	1,3	-	0/0/48/48	0/6/5/5
3	10E	A	402	2	-	0/13/15/15	0/0/0/0
2	SF4	B	401	1,3	-	0/0/48/48	0/6/5/5
3	10E	B	402	2	-	0/13/15/15	0/0/0/0

All (3) bond length outliers are listed below:

Mol	Chain	Res	Type	Atoms	Z	Observed(Å)	Ideal(Å)
3	A	402	10E	C4-C3	-2.82	1.43	1.50
3	B	402	10E	O7-C6	2.68	1.47	1.43
3	A	402	10E	O7-C6	6.67	1.52	1.43

All (3) bond angle outliers are listed below:

Mol	Chain	Res	Type	Atoms	Z	Observed(°)	Ideal(°)
3	B	402	10E	C1-C3-C5	-2.61	115.71	121.10
3	B	402	10E	C6-C5-C3	-2.24	121.83	125.96
3	B	402	10E	O15-P12-O14	2.52	117.76	107.61

There are no chirality outliers.

There are no torsion outliers.

There are no ring outliers.

No monomer is involved in short contacts.

5.7 Other polymers [i](#)

There are no such residues in this entry.

5.8 Polymer linkage issues [i](#)

There are no chain breaks in this entry.

6 Fit of model and data [i](#)

6.1 Protein, DNA and RNA chains [i](#)

In the following table, the column labelled ‘#RSRZ> 2’ contains the number (and percentage) of RSRZ outliers, followed by percent RSRZ outliers for the chain as percentile scores relative to all X-ray entries and entries of similar resolution. The OWAB column contains the minimum, median, 95th percentile and maximum values of the occupancy-weighted average B-factor per residue. The column labelled ‘Q< 0.9’ lists the number of (and percentage) of residues with an average occupancy less than 0.9.

Mol	Chain	Analysed	<RSRZ>	#RSRZ>2	OWAB(Å ²)	Q<0.9
1	A	309/323 (95%)	-0.18	5 (1%) 72 77	9, 16, 30, 45	0
1	B	310/323 (95%)	-0.16	1 (0%) 93 94	10, 17, 31, 51	0
All	All	619/646 (95%)	-0.17	6 (0%) 82 86	9, 16, 30, 51	0

All (6) RSRZ outliers are listed below:

Mol	Chain	Res	Type	RSRZ
1	A	88	ASP	3.6
1	B	310	VAL	2.9
1	A	309	ARG	2.4
1	A	137	PRO	2.2
1	A	289	GLU	2.1
1	A	65	ASP	2.1

6.2 Non-standard residues in protein, DNA, RNA chains [i](#)

There are no non-standard protein/DNA/RNA residues in this entry.

6.3 Carbohydrates [i](#)

There are no carbohydrates in this entry.

6.4 Ligands [i](#)

In the following table, the Atoms column lists the number of modelled atoms in the group and the number defined in the chemical component dictionary. LLDF column lists the quality of electron density of the group with respect to its neighbouring residues in protein, DNA or RNA chains. The B-factors column lists the minimum, median, 95th percentile and maximum values of B factors

of atoms in the group. The column labelled 'Q < 0.9' lists the number of atoms with occupancy less than 0.9.

Mol	Type	Chain	Res	Atoms	RSCC	RSR	LLDF	B-factors(\AA^2)	Q<0.9
3	10E	B	402	15/15	0.98	0.07	1.08	9,10,14,18	0
2	SF4	A	401	8/8	0.98	0.07	0.77	9,10,11,17	0
2	SF4	B	401	8/8	0.98	0.07	0.49	9,10,11,17	0
3	10E	A	402	15/15	0.99	0.06	0.44	8,10,13,18	0

6.5 Other polymers [i](#)

There are no such residues in this entry.