



Full wwPDB X-ray Structure Validation Report ⓘ

Nov 7, 2017 – 04:04 AM EST

PDB ID : 4H4M
Title : Crystal Structure of HIV-1 Reverse Transcriptase in Complex with (E)-3-(3-chloro-5-(4-chloro-2-(2-(2,4-dioxo-3,4-dihydropyrimidin-1(2H)-yl)ethoxy)phenoxy)phenyl)acrylonitrile (JLJ494), a Non-nucleoside Inhibitor
Authors : Frey, K.M.; Anderson, K.S.
Deposited on : unknown
Resolution : 2.85 Å(reported)

This is a Full wwPDB X-ray Structure Validation Report for a publicly released PDB entry.

We welcome your comments at validation@mail.wwpdb.org

A user guide is available at

<http://wwpdb.org/validation/2016/XrayValidationReportHelp>

with specific help available everywhere you see the ⓘ symbol.

The following versions of software and data (see [references ⓘ](#)) were used in the production of this report:

MolProbity : 4.02b-467
Mogul : 1.7.2 (RC1), CSD as538be (2017)
Xtriage (Phenix) : 1.9-1692
EDS : rb-20030345
Percentile statistics : 20161228.v01 (using entries in the PDB archive December 28th 2016)
Refmac : 5.8.0135
CCP4 : 6.5.0
Ideal geometry (proteins) : Engh & Huber (2001)
Ideal geometry (DNA, RNA) : Parkinson et al. (1996)
Validation Pipeline (wwPDB-VP) : rb-20030345

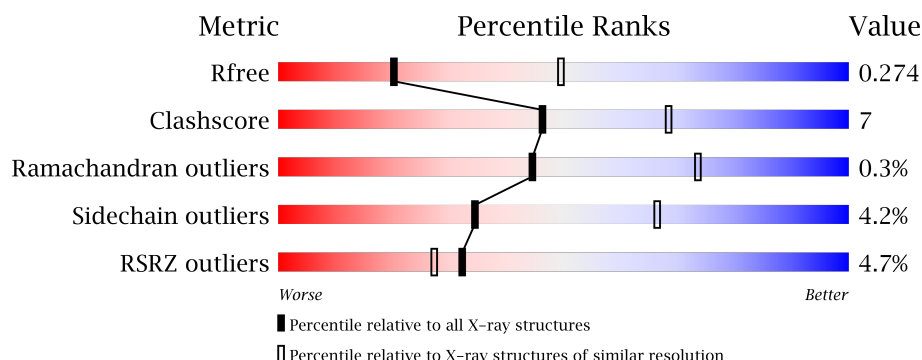
1 Overall quality at a glance

The following experimental techniques were used to determine the structure:

X-RAY DIFFRACTION

The reported resolution of this entry is 2.85 Å.

Percentile scores (ranging between 0-100) for global validation metrics of the entry are shown in the following graphic. The table shows the number of entries on which the scores are based.



Metric	Whole archive (#Entries)	Similar resolution (#Entries, resolution range(Å))
R_{free}	100719	2469 (2.90-2.82)
Clashscore	112137	2749 (2.90-2.82)
Ramachandran outliers	110173	2687 (2.90-2.82)
Sidechain outliers	110143	2690 (2.90-2.82)
RSRZ outliers	101464	2487 (2.90-2.82)

The table below summarises the geometric issues observed across the polymeric chains and their fit to the electron density. The red, orange, yellow and green segments on the lower bar indicate the fraction of residues that contain outliers for ≥ 3 , 2, 1 and 0 types of geometric quality criteria. A grey segment represents the fraction of residues that are not modelled. The numeric value for each fraction is indicated below the corresponding segment, with a dot representing fractions $\leq 5\%$. The upper red bar (where present) indicates the fraction of residues that have poor fit to the electron density. The numeric value is given above the bar.

Mol	Chain	Length	Quality of chain
1	A	557	<div> <div>4%</div> <div>75%</div> <div>21%</div> <div>..</div> </div>
2	B	428	<div> <div>5%</div> <div>81%</div> <div>19%</div> </div>

2 Entry composition

There are 5 unique types of molecules in this entry. The entry contains 8075 atoms, of which 0 are hydrogens and 0 are deuteriums.

In the tables below, the ZeroOcc column contains the number of atoms modelled with zero occupancy, the AltConf column contains the number of residues with at least one atom in alternate conformation and the Trace column contains the number of residues modelled with at most 2 atoms.

- Molecule 1 is a protein called Reverse transcriptase/ribonuclease H, Exoribonuclease H, p66 RT.

Mol	Chain	Residues	Atoms					ZeroOcc	AltConf	Trace
1	A	548	Total	C	N	O	S	0	0	0
			4458	2886	741	824	7			

There are 5 discrepancies between the modelled and reference sequences:

Chain	Residue	Modelled	Actual	Comment	Reference
A	-1	MET	-	INITIATING METHIONINE	UNP P03366
A	0	VAL	-	EXPRESSION TAG	UNP P03366
A	172	ALA	LYS	ENGINEERED MUTATION	UNP P03366
A	173	ALA	LYS	ENGINEERED MUTATION	UNP P03366
A	280	SER	CYS	ENGINEERED MUTATION	UNP P03366

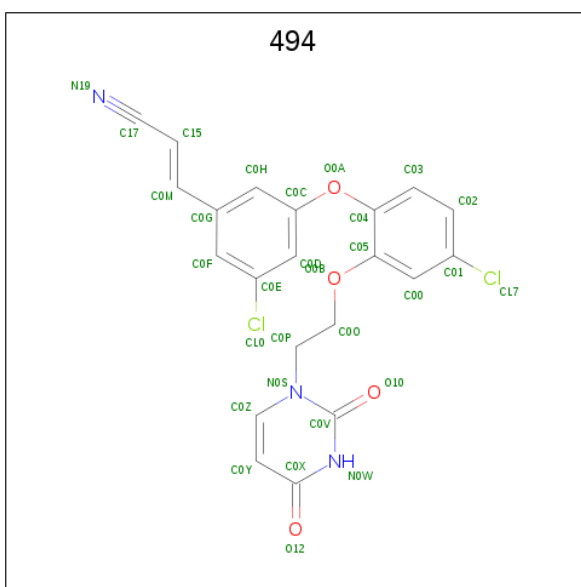
- Molecule 2 is a protein called Reverse transcriptase/ribonuclease H, Exoribonuclease H, p51 RT.

Mol	Chain	Residues	Atoms					ZeroOcc	AltConf	Trace
2	B	428	Total	C	N	O	S	0	0	0
			3538	2305	586	640	7			

There is a discrepancy between the modelled and reference sequences:

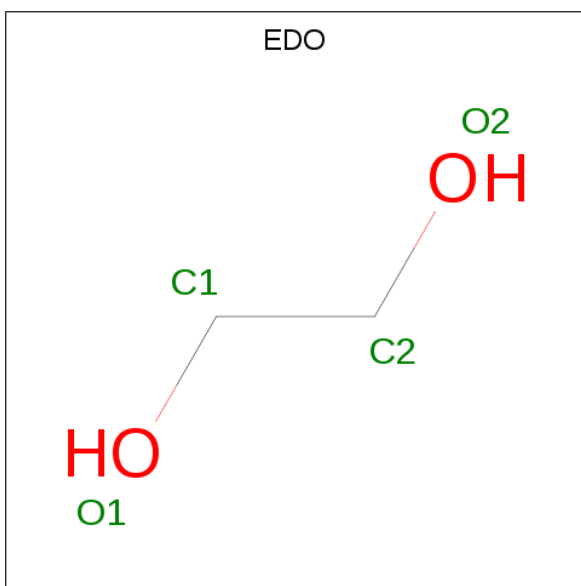
Chain	Residue	Modelled	Actual	Comment	Reference
B	280	SER	CYS	ENGINEERED MUTATION	UNP P03366

- Molecule 3 is (2E)-3-(3-chloro-5-{4-chloro-2-[2-(2,4-dioxo-3,4-dihydropyrimidin-1(2H)-yl)ethoxy]phenoxy}phenyl)prop-2-enenitrile (three-letter code: 494) (formula: C₂₁H₁₅Cl₂N₃O₄).



Mol	Chain	Residues	Atoms					ZeroOcc	AltConf
3	A	1	Total	C	Cl	N	O	0	0
			30	21	2	3	4		

- Molecule 4 is 1,2-ETHANEDIOL (three-letter code: EDO) (formula: $\text{C}_2\text{H}_6\text{O}_2$).



Mol	Chain	Residues	Atoms			ZeroOcc	AltConf
4	B	1	Total	C	O	0	0
			4	2	2		

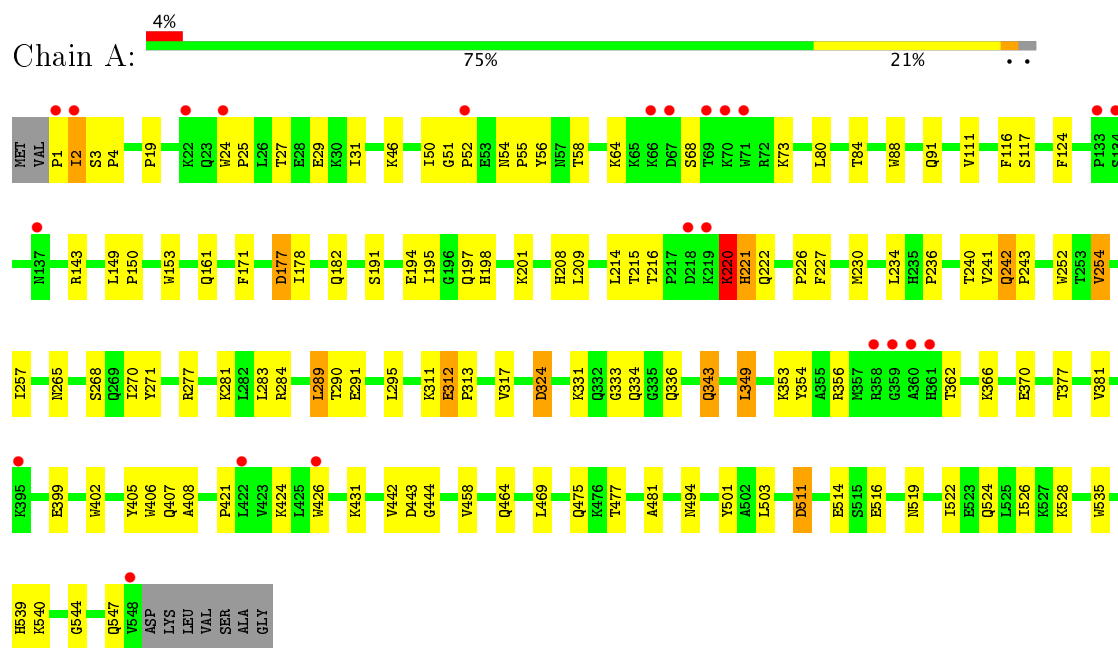
- Molecule 5 is water.

Mol	Chain	Residues	Atoms		ZeroOcc	AltConf
5	A	22	Total 22	O 22	0	0
5	B	23	Total 23	O 23	0	0

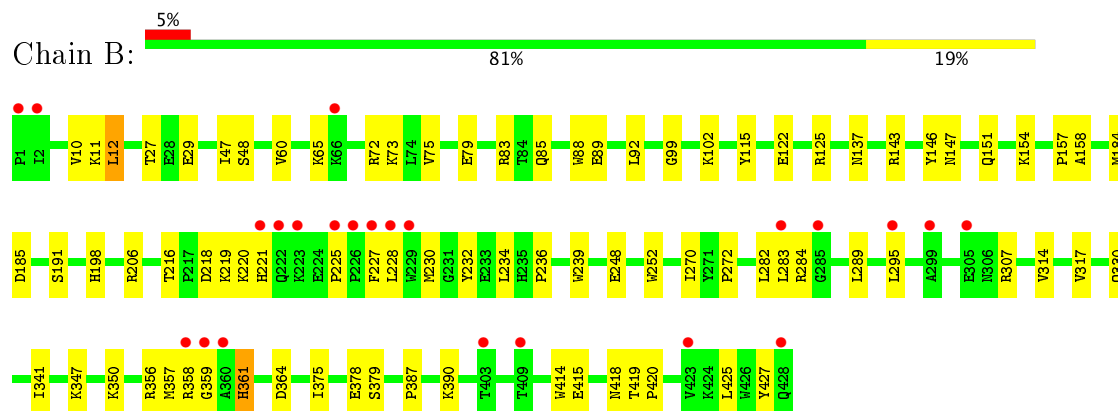
3 Residue-property plots [i](#)

These plots are drawn for all protein, RNA and DNA chains in the entry. The first graphic for a chain summarises the proportions of the various outlier classes displayed in the second graphic. The second graphic shows the sequence view annotated by issues in geometry and electron density. Residues are color-coded according to the number of geometric quality criteria for which they contain at least one outlier: green = 0, yellow = 1, orange = 2 and red = 3 or more. A red dot above a residue indicates a poor fit to the electron density ($RSRZ > 2$). Stretches of 2 or more consecutive residues without any outlier are shown as a green connector. Residues present in the sample, but not in the model, are shown in grey.

- Molecule 1: Reverse transcriptase/ribonuclease H, Exoribonuclease H, p66 RT



- Molecule 2: Reverse transcriptase/ribonuclease H, Exoribonuclease H, p51 RT



4 Data and refinement statistics

Property	Value	Source
Space group	C 1 2 1	Depositor
Cell constants a, b, c, α , β , γ	225.13Å 69.21Å 104.14Å 90.00° 106.43° 90.00°	Depositor
Resolution (Å)	36.64 – 2.85 36.64 – 2.85	Depositor EDS
% Data completeness (in resolution range)	98.4 (36.64-2.85) 98.5 (36.64-2.85)	Depositor EDS
R_{merge}	0.10	Depositor
R_{sym}	0.10	Depositor
$\langle I/\sigma(I) \rangle$ ¹	2.42 (at 2.85Å)	Xtriage
Refinement program	PHENIX 1.8_1069	Depositor
R, R_{free}	0.233 , 0.273 0.233 , 0.274	Depositor DCC
R_{free} test set	1998 reflections (5.60%)	DCC
Wilson B-factor (Å ²)	83.4	Xtriage
Anisotropy	0.170	Xtriage
Bulk solvent k_{sol} (e/Å ³), B_{sol} (Å ²)	0.28 , 53.0	EDS
L-test for twinning ²	$\langle L \rangle = 0.49$, $\langle L^2 \rangle = 0.33$	Xtriage
Estimated twinning fraction	No twinning to report.	Xtriage
F_o, F_c correlation	0.93	EDS
Total number of atoms	8075	wwPDB-VP
Average B, all atoms (Å ²)	60.0	wwPDB-VP

Xtriage's analysis on translational NCS is as follows: *The largest off-origin peak in the Patterson function is 3.52% of the height of the origin peak. No significant pseudotranslation is detected.*

¹Intensities estimated from amplitudes.

²Theoretical values of $\langle |L| \rangle$, $\langle L^2 \rangle$ for acentric reflections are 0.5, 0.333 respectively for untwinned datasets, and 0.375, 0.2 for perfectly twinned datasets.

5 Model quality [i](#)

5.1 Standard geometry [i](#)

Bond lengths and bond angles in the following residue types are not validated in this section: 494, EDO

The Z score for a bond length (or angle) is the number of standard deviations the observed value is removed from the expected value. A bond length (or angle) with $|Z| > 5$ is considered an outlier worth inspection. RMSZ is the root-mean-square of all Z scores of the bond lengths (or angles).

Mol	Chain	Bond lengths		Bond angles	
		RMSZ	# Z >5	RMSZ	# Z >5
1	A	0.24	0/4576	0.46	0/6220
2	B	0.24	0/3643	0.48	0/4952
All	All	0.24	0/8219	0.47	0/11172

Chiral center outliers are detected by calculating the chiral volume of a chiral center and verifying if the center is modelled as a planar moiety or with the opposite hand. A planarity outlier is detected by checking planarity of atoms in a peptide group, atoms in a mainchain group or atoms of a sidechain that are expected to be planar.

Mol	Chain	#Chirality outliers	#Planarity outliers
1	A	0	1
2	B	0	1
All	All	0	2

There are no bond length outliers.

There are no bond angle outliers.

There are no chirality outliers.

All (2) planarity outliers are listed below:

Mol	Chain	Res	Type	Group
1	A	220	LYS	Peptide
2	B	419	THR	Peptide

5.2 Too-close contacts [i](#)

In the following table, the Non-H and H(model) columns list the number of non-hydrogen atoms and hydrogen atoms in the chain respectively. The H(added) column lists the number of hydrogen atoms added and optimized by MolProbity. The Clashes column lists the number of clashes within the asymmetric unit, whereas Symm-Clashes lists symmetry related clashes.

Mol	Chain	Non-H	H(model)	H(added)	Clashes	Symm-Clashes
1	A	4458	0	4507	77	0
2	B	3538	0	3576	45	0
3	A	30	0	15	1	0
4	B	4	0	6	0	0
5	A	22	0	0	1	0
5	B	23	0	0	0	0
All	All	8075	0	8104	116	0

The all-atom clashscore is defined as the number of clashes found per 1000 atoms (including hydrogen atoms). The all-atom clashscore for this structure is 7.

All (116) close contacts within the same asymmetric unit are listed below, sorted by their clash magnitude.

Atom-1	Atom-2	Interatomic distance (Å)	Clash overlap (Å)
2:B:85:GLN:HA	2:B:88:TRP:HB2	1.64	0.80
1:A:84:THR:HG21	1:A:153:TRP:HE1	1.57	0.69
1:A:226:PRO:HA	1:A:227:PHE:HB2	1.76	0.68
1:A:281:LYS:HA	1:A:284:ARG:HG3	1.76	0.68
1:A:91:GLN:NE2	2:B:137:ASN:O	2.31	0.63
1:A:88:TRP:CE2	2:B:143:ARG:HD2	2.34	0.63
2:B:85:GLN:HG3	2:B:154:LYS:HB3	1.81	0.62
1:A:177:ASP:OD1	1:A:177:ASP:N	2.33	0.61
1:A:220:LYS:HB3	1:A:222:GLN:H	1.65	0.61
1:A:64:LYS:NZ	1:A:68:SER:O	2.27	0.61
2:B:390:LYS:NZ	2:B:415:GLU:OE2	2.35	0.60
2:B:60:VAL:HG12	2:B:75:VAL:HG22	1.86	0.57
1:A:252:TRP:HD1	1:A:295:LEU:HD21	1.68	0.57
2:B:85:GLN:O	2:B:89:GLU:N	2.38	0.57
1:A:408:ALA:HB1	2:B:364:ASP:HB3	1.87	0.57
1:A:354:TYR:OH	1:A:370:GLU:OE1	2.24	0.55
1:A:242:GLN:HG3	1:A:243:PRO:HD2	1.87	0.55
2:B:12:LEU:HD12	2:B:12:LEU:H	1.72	0.55
1:A:399:GLU:HA	1:A:402:TRP:CD1	2.43	0.54
2:B:157:PRO:HG3	2:B:184:MET:HA	1.89	0.54
1:A:271:TYR:HE2	1:A:313:PRO:HA	1.74	0.53
1:A:84:THR:HG22	1:A:124:PHE:HZ	1.75	0.52
1:A:356:ARG:HG2	1:A:362:THR:HG21	1.91	0.52
2:B:206:ARG:NH1	2:B:216:THR:O	2.30	0.52
2:B:216:THR:O	2:B:218:ASP:N	2.42	0.52
2:B:357:MET:O	2:B:361:HIS:NE2	2.36	0.50
1:A:240:THR:HG22	1:A:241:VAL:H	1.76	0.50
1:A:516:GLU:HA	1:A:519:ASN:HD22	1.77	0.50

Continued on next page...

Continued from previous page...

Atom-1	Atom-2	Interatomic distance (Å)	Clash overlap (Å)
1:A:405:TYR:CE2	1:A:407:GLN:HB2	2.47	0.50
2:B:27:THR:HG22	2:B:29:GLU:H	1.77	0.50
1:A:24:TRP:N	1:A:25:PRO:HD2	2.27	0.49
2:B:252:TRP:CD1	2:B:295:LEU:HD11	2.47	0.49
1:A:494:ASN:HB3	2:B:289:LEU:HD12	1.94	0.49
1:A:56:TYR:O	1:A:143:ARG:NH2	2.46	0.49
2:B:206:ARG:NH1	2:B:216:THR:OG1	2.46	0.49
1:A:91:GLN:HE21	2:B:137:ASN:HB3	1.78	0.48
1:A:19:PRO:O	1:A:56:TYR:HB3	2.14	0.48
1:A:277:ARG:NH2	1:A:514:GLU:OE1	2.46	0.48
1:A:3:SER:N	1:A:4:PRO:HD2	2.29	0.48
2:B:236:PRO:HA	2:B:239:TRP:CD2	2.48	0.48
1:A:265:ASN:O	1:A:268:SER:OG	2.31	0.48
1:A:51:GLY:HA3	1:A:52:PRO:HD2	1.73	0.48
2:B:350:LYS:NZ	2:B:378:GLU:OE1	2.47	0.48
1:A:503:LEU:HD22	1:A:535:TRP:HB2	1.95	0.48
1:A:539:HIS:ND1	1:A:539:HIS:O	2.46	0.47
1:A:220:LYS:HD2	1:A:220:LYS:HA	1.44	0.47
1:A:220:LYS:CB	1:A:222:GLN:H	2.27	0.47
1:A:458:VAL:HG13	1:A:464:GLN:HG2	1.96	0.47
2:B:10:VAL:HA	2:B:88:TRP:CZ2	2.49	0.47
1:A:195:ILE:HD12	1:A:195:ILE:H	1.80	0.47
2:B:122:GLU:OE1	2:B:125:ARG:NH1	2.48	0.47
2:B:221:HIS:ND1	2:B:225:PRO:HB3	2.29	0.47
2:B:317:VAL:HG12	2:B:347:LYS:HB3	1.96	0.47
1:A:406:TRP:CZ3	2:B:420:PRO:HG2	2.50	0.47
1:A:334:GLN:HB2	1:A:336:GLN:HE21	1.79	0.46
2:B:270:ILE:O	2:B:272:PRO:HD3	2.15	0.46
1:A:27:THR:O	1:A:31:ILE:HG13	2.16	0.46
1:A:236:PRO:HA	3:A:601:494:C0X	2.46	0.46
1:A:469:LEU:HD12	1:A:477:THR:HG22	1.97	0.46
1:A:540:LYS:HA	1:A:540:LYS:HD3	1.87	0.46
2:B:282:LEU:HD21	2:B:295:LEU:HA	1.98	0.46
1:A:475:GLN:HB3	1:A:501:TYR:CE2	2.51	0.45
2:B:220:LYS:HD2	2:B:230:MET:SD	2.56	0.45
1:A:324:ASP:N	1:A:324:ASP:OD1	2.49	0.45
2:B:248:GLU:HG2	2:B:307:ARG:NH2	2.31	0.45
1:A:80:LEU:O	1:A:84:THR:HG23	2.16	0.45
1:A:331:LYS:NZ	1:A:333:GLY:HA2	2.31	0.44
2:B:73:LYS:NZ	2:B:146:TYR:OH	2.45	0.44
2:B:115:TYR:OH	2:B:184:MET:O	2.29	0.44

Continued on next page...

Continued from previous page...

Atom-1	Atom-2	Interatomic distance (Å)	Clash overlap (Å)
1:A:254:VAL:HG12	1:A:291:GLU:O	2.18	0.44
2:B:341:ILE:HD11	2:B:375:ILE:HG23	2.00	0.44
2:B:220:LYS:HE3	2:B:221:HIS:HB2	1.98	0.44
1:A:227:PHE:HB3	1:A:234:LEU:HB2	1.99	0.44
1:A:312:GLU:HA	1:A:313:PRO:HD3	1.83	0.44
2:B:191:SER:OG	2:B:198:HIS:ND1	2.31	0.44
1:A:324:ASP:O	1:A:343:GLN:HB3	2.17	0.43
2:B:234:LEU:HD13	2:B:239:TRP:HH2	1.82	0.43
2:B:79:GLU:OE2	2:B:83:ARG:NH1	2.50	0.43
1:A:46:LYS:HD3	1:A:116:PHE:HB3	1.99	0.43
2:B:99:GLY:HA2	2:B:102:LYS:HG3	1.99	0.43
1:A:220:LYS:O	1:A:221:HIS:HB2	2.18	0.43
1:A:277:ARG:HH11	1:A:334:GLN:HB3	1.83	0.43
1:A:426:TRP:CD1	1:A:511:ASP:HB3	2.53	0.42
1:A:191:SER:HB3	1:A:198:HIS:ND1	2.35	0.42
1:A:377:THR:O	1:A:381:VAL:HG23	2.19	0.42
1:A:149:LEU:HA	1:A:150:PRO:HD3	1.87	0.42
1:A:442:VAL:HB	1:A:481:ALA:HB1	2.01	0.42
1:A:311:LYS:HE2	1:A:311:LYS:HB3	1.78	0.42
1:A:1:PRO:HB2	1:A:2:ILE:H	1.60	0.42
2:B:379:SER:CB	2:B:387:PRO:HD3	2.50	0.42
1:A:50:ILE:O	1:A:143:ARG:HB2	2.19	0.42
1:A:73:LYS:HB3	1:A:73:LYS:HE3	1.92	0.42
2:B:47:ILE:HG22	2:B:146:TYR:HA	2.01	0.42
1:A:194:GLU:HB3	1:A:197:GLN:HE21	1.85	0.42
1:A:201:LYS:HD3	1:A:201:LYS:HA	1.81	0.41
1:A:317:VAL:HG23	1:A:349:LEU:HD13	2.00	0.41
2:B:219:LYS:HG3	2:B:219:LYS:H	1.58	0.41
1:A:161:GLN:HG3	1:A:182:GLN:NE2	2.35	0.41
1:A:443:ASP:OD1	1:A:444:GLY:N	2.53	0.41
1:A:524:GLN:O	1:A:528:LYS:HG2	2.20	0.41
1:A:270:ILE:HA	1:A:270:ILE:HD12	1.88	0.41
1:A:254:VAL:HG13	1:A:289:LEU:O	2.21	0.41
1:A:27:THR:OG1	1:A:29:GLU:HG2	2.20	0.41
2:B:65:LYS:HB2	2:B:72:ARG:HB2	2.03	0.41
1:A:2:ILE:HG21	1:A:117:SER:O	2.20	0.41
1:A:209:LEU:HD22	1:A:214:LEU:HD12	2.03	0.41
1:A:522:ILE:O	1:A:526:ILE:HG13	2.20	0.41
1:A:366:LYS:O	1:A:370:GLU:HG3	2.19	0.41
2:B:48:SER:OG	2:B:147:ASN:ND2	2.37	0.41
1:A:544:GLY:HA3	5:A:722:HOH:O	2.21	0.41

Continued on next page...

Continued from previous page...

Atom-1	Atom-2	Interatomic distance (Å)	Clash overlap (Å)
2:B:358:ARG:HB3	2:B:359:GLY:H	1.78	0.41
1:A:171:PHE:HB2	1:A:208:HIS:ND1	2.36	0.40
2:B:92:LEU:HB3	2:B:158:ALA:HB1	2.03	0.40
1:A:424:LYS:HB3	1:A:426:TRP:CZ3	2.57	0.40
1:A:54:ASN:N	1:A:55:PRO:HD3	2.37	0.40
2:B:151:GLN:HB3	2:B:185:ASP:OD2	2.22	0.40

There are no symmetry-related clashes.

5.3 Torsion angles [i](#)

5.3.1 Protein backbone [i](#)

In the following table, the Percentiles column shows the percent Ramachandran outliers of the chain as a percentile score with respect to all X-ray entries followed by that with respect to entries of similar resolution.

The Analysed column shows the number of residues for which the backbone conformation was analysed, and the total number of residues.

Mol	Chain	Analysed	Favoured	Allowed	Outliers	Percentiles	
1	A	546/557 (98%)	514 (94%)	29 (5%)	3 (0%)	32	64
2	B	426/428 (100%)	397 (93%)	29 (7%)	0	100	100
All	All	972/985 (99%)	911 (94%)	58 (6%)	3 (0%)	44	73

All (3) Ramachandran outliers are listed below:

Mol	Chain	Res	Type
1	A	221	HIS
1	A	421	PRO
1	A	220	LYS

5.3.2 Protein sidechains [i](#)

In the following table, the Percentiles column shows the percent sidechain outliers of the chain as a percentile score with respect to all X-ray entries followed by that with respect to entries of similar resolution.

The Analysed column shows the number of residues for which the sidechain conformation was analysed, and the total number of residues.

Mol	Chain	Analysed	Rotameric	Outliers	Percentiles	
1	A	488/495 (99%)	466 (96%)	22 (4%)	32	63
2	B	390/390 (100%)	375 (96%)	15 (4%)	38	70
All	All	878/885 (99%)	841 (96%)	37 (4%)	34	66

All (37) residues with a non-rotameric sidechain are listed below:

Mol	Chain	Res	Type
1	A	2	ILE
1	A	58	THR
1	A	111	VAL
1	A	177	ASP
1	A	178	ILE
1	A	215	THR
1	A	216	THR
1	A	230	MET
1	A	242	GLN
1	A	254	VAL
1	A	257	ILE
1	A	283	LEU
1	A	289	LEU
1	A	290	THR
1	A	312	GLU
1	A	324	ASP
1	A	343	GLN
1	A	349	LEU
1	A	353	LYS
1	A	431	LYS
1	A	511	ASP
1	A	547	GLN
2	B	11	LYS
2	B	12	LEU
2	B	227	PHE
2	B	228	LEU
2	B	232	TYR
2	B	283	LEU
2	B	284	ARG
2	B	314	VAL
2	B	330	GLN
2	B	356	ARG
2	B	361	HIS
2	B	414	TRP
2	B	418	ASN

Continued on next page...

Continued from previous page...

Mol	Chain	Res	Type
2	B	425	LEU
2	B	427	TYR

Some sidechains can be flipped to improve hydrogen bonding and reduce clashes. All (4) such sidechains are listed below:

Mol	Chain	Res	Type
1	A	91	GLN
1	A	197	GLN
2	B	147	ASN
2	B	161	GLN

5.3.3 RNA [i](#)

There are no RNA molecules in this entry.

5.4 Non-standard residues in protein, DNA, RNA chains [i](#)

There are no non-standard protein/DNA/RNA residues in this entry.

5.5 Carbohydrates [i](#)

There are no carbohydrates in this entry.

5.6 Ligand geometry [i](#)

2 ligands are modelled in this entry.

In the following table, the Counts columns list the number of bonds (or angles) for which Mogul statistics could be retrieved, the number of bonds (or angles) that are observed in the model and the number of bonds (or angles) that are defined in the Chemical Component Dictionary. The Link column lists molecule types, if any, to which the group is linked. The Z score for a bond length (or angle) is the number of standard deviations the observed value is removed from the expected value. A bond length (or angle) with $|Z| > 2$ is considered an outlier worth inspection. RMSZ is the root-mean-square of all Z scores of the bond lengths (or angles).

Mol	Type	Chain	Res	Link	Bond lengths			Bond angles		
					Counts	RMSZ	# Z > 2	Counts	RMSZ	# Z > 2
3	494	A	601	-	29,32,32	1.47	1 (3%)	35,43,43	3.49	9 (25%)
4	EDO	B	501	-	3,3,3	0.47	0	2,2,2	0.33	0

In the following table, the Chirals column lists the number of chiral outliers, the number of chiral centers analysed, the number of these observed in the model and the number defined in the Chemical Component Dictionary. Similar counts are reported in the Torsion and Rings columns. '-' means no outliers of that kind were identified.

Mol	Type	Chain	Res	Link	Chirals	Torsions	Rings
3	494	A	601	-	-	0/13/14/14	0/3/3/3
4	EDO	B	501	-	-	0/1/1/1	0/0/0/0

All (1) bond length outliers are listed below:

Mol	Chain	Res	Type	Atoms	Z	Observed(Å)	Ideal(Å)
3	A	601	494	C0Z-N0S	3.77	1.42	1.36

All (9) bond angle outliers are listed below:

Mol	Chain	Res	Type	Atoms	Z	Observed(°)	Ideal(°)
3	A	601	494	O0B-C05-C00	-4.79	111.94	123.61
3	A	601	494	C0Y-C0X-N0W	-3.49	114.80	123.12
3	A	601	494	C0F-C0E-CL0	2.05	121.70	119.14
3	A	601	494	C0C-C0D-C0E	2.26	120.78	118.17
3	A	601	494	C0G-C0F-C0E	2.31	121.63	119.65
3	A	601	494	C0O-O0B-C05	2.72	124.31	117.70
3	A	601	494	O0B-C0O-C0P	4.09	111.46	107.28
3	A	601	494	O0B-C05-C04	7.03	130.43	115.76
3	A	601	494	C0X-N0W-C0V	16.53	128.33	114.13

There are no chirality outliers.

There are no torsion outliers.

There are no ring outliers.

1 monomer is involved in 1 short contact:

Mol	Chain	Res	Type	Clashes	Symm-Clashes
3	A	601	494	1	0

5.7 Other polymers ⓘ

There are no such residues in this entry.

5.8 Polymer linkage issues ⓘ

There are no chain breaks in this entry.

6 Fit of model and data

6.1 Protein, DNA and RNA chains

In the following table, the column labelled ‘#RSRZ> 2’ contains the number (and percentage) of RSRZ outliers, followed by percent RSRZ outliers for the chain as percentile scores relative to all X-ray entries and entries of similar resolution. The OWAB column contains the minimum, median, 95th percentile and maximum values of the occupancy-weighted average B-factor per residue. The column labelled ‘Q< 0.9’ lists the number of (and percentage) of residues with an average occupancy less than 0.9.

Mol	Chain	Analysed	<RSRZ>	#RSRZ>2	OWAB(Å ²)	Q<0.9
1	A	548/557 (98%)	0.03	23 (4%) 37 31	10, 53, 128, 210	1 (0%)
2	B	428/428 (100%)	0.18	23 (5%) 26 22	7, 45, 142, 264	1 (0%)
All	All	976/985 (99%)	0.10	46 (4%) 32 27	7, 50, 133, 264	2 (0%)

All (46) RSRZ outliers are listed below:

Mol	Chain	Res	Type	RSRZ
2	B	1	PRO	12.4
2	B	2	ILE	8.8
2	B	226	PRO	7.9
2	B	358	ARG	6.0
1	A	24	TRP	4.9
1	A	359	GLY	4.7
2	B	359	GLY	4.6
2	B	229	TRP	4.4
2	B	225	PRO	4.4
2	B	227	PHE	4.4
2	B	222	GLN	4.0
1	A	361	HIS	4.0
2	B	428	GLN	3.9
1	A	52	PRO	3.9
1	A	137	ASN	3.7
2	B	295	LEU	3.5
2	B	228	LEU	3.4
1	A	2	ILE	3.4
2	B	409	THR	3.3
1	A	66	LYS	3.2
1	A	360	ALA	3.1
2	B	223	LYS	3.1
2	B	283	LEU	3.0
1	A	219	LYS	2.9

Continued on next page...

Continued from previous page...

Mol	Chain	Res	Type	RSRZ
1	A	71	TRP	2.9
1	A	133	PRO	2.8
2	B	423	VAL	2.6
1	A	395	LYS	2.6
1	A	69	THR	2.6
1	A	22	LYS	2.5
1	A	67	ASP	2.5
2	B	360	ALA	2.4
1	A	1	PRO	2.3
2	B	66	LYS	2.3
1	A	358	ARG	2.3
2	B	221	HIS	2.3
1	A	70	LYS	2.3
1	A	422	LEU	2.3
2	B	285	GLY	2.3
2	B	403	THR	2.2
2	B	299	ALA	2.1
1	A	218	ASP	2.1
1	A	134	SER	2.1
1	A	426	TRP	2.0
2	B	305	GLU	2.0
1	A	548	VAL	2.0

6.2 Non-standard residues in protein, DNA, RNA chains [i](#)

There are no non-standard protein/DNA/RNA residues in this entry.

6.3 Carbohydrates [i](#)

There are no carbohydrates in this entry.

6.4 Ligands [i](#)

In the following table, the Atoms column lists the number of modelled atoms in the group and the number defined in the chemical component dictionary. LLDF column lists the quality of electron density of the group with respect to its neighbouring residues in protein, DNA or RNA chains. The B-factors column lists the minimum, median, 95th percentile and maximum values of B factors of atoms in the group. The column labelled 'Q < 0.9' lists the number of atoms with occupancy less than 0.9.

Mol	Type	Chain	Res	Atoms	RSCC	RSR	LLDF	B-factors(\AA^2)	Q<0.9
3	494	A	601	30/30	0.88	0.24	1.26	45,45,45,45	0
4	EDO	B	501	4/4	0.21	0.31	-	96,99,100,100	0

6.5 Other polymers [i](#)

There are no such residues in this entry.