



Full wwPDB X-ray Structure Validation Report ⓘ

Feb 14, 2017 – 07:21 pm GMT

PDB ID : 1H74
Title : CRYSTAL STRUCTURE OF HOMOSERINE KINASE COMPLEXED WITH ILE
Authors : Krishna, S.S.; Zhou, T.; Daugherty, M.; Osterman, A.L.; Zhang, H.
Deposited on : 2001-07-02
Resolution : 1.90 Å(reported)

This is a Full wwPDB X-ray Structure Validation Report for a publicly released PDB entry.

We welcome your comments at validation@mail.wwpdb.org

A user guide is available at

<http://wwpdb.org/validation/2016/XrayValidationReportHelp>

with specific help available everywhere you see the ⓘ symbol.

The following versions of software and data (see [references ⓘ](#)) were used in the production of this report:

MolProbity : 4.02b-467
Mogul : 1.7.2 (RC1), CSD as538be (2017)
Xtriage (Phenix) : 1.9-1692
EDS : trunk28620
Percentile statistics : 20161228.v01 (using entries in the PDB archive December 28th 2016)
Refmac : 5.8.0135
CCP4 : 6.5.0
Ideal geometry (proteins) : Engh & Huber (2001)
Ideal geometry (DNA, RNA) : Parkinson et al. (1996)
Validation Pipeline (wwPDB-VP) : recalc28949

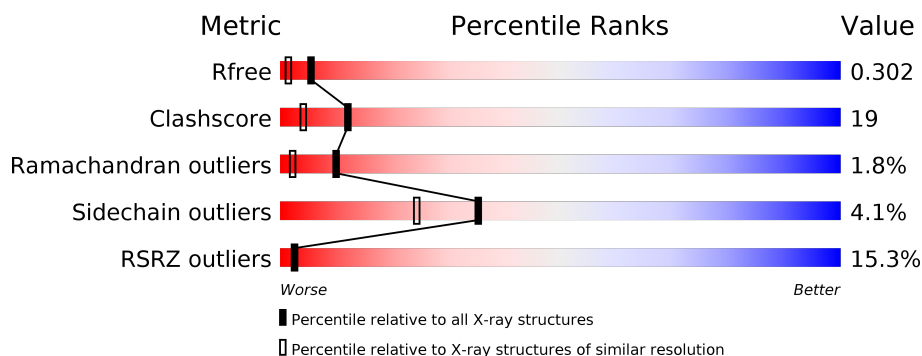
1 Overall quality at a glance

The following experimental techniques were used to determine the structure:

X-RAY DIFFRACTION

The reported resolution of this entry is 1.90 Å.

Percentile scores (ranging between 0-100) for global validation metrics of the entry are shown in the following graphic. The table shows the number of entries on which the scores are based.



Metric	Whole archive (#Entries)	Similar resolution (#Entries, resolution range(Å))
R_{free}	100719	5047 (1.90-1.90)
Clashscore	112137	5731 (1.90-1.90)
Ramachandran outliers	110173	5669 (1.90-1.90)
Sidechain outliers	110143	5670 (1.90-1.90)
RSRZ outliers	101464	5100 (1.90-1.90)

The table below summarises the geometric issues observed across the polymeric chains and their fit to the electron density. The red, orange, yellow and green segments on the lower bar indicate the fraction of residues that contain outliers for ≥ 3 , 2, 1 and 0 types of geometric quality criteria. A grey segment represents the fraction of residues that are not modelled. The numeric value for each fraction is indicated below the corresponding segment, with a dot representing fractions $\leq 5\%$. The upper red bar (where present) indicates the fraction of residues that have poor fit to the electron density. The numeric value is given above the bar.

Mol	Chain	Length	Quality of chain
1	A	296	<div> <div>7%</div> <div>72%</div> <div>25%</div> <div>.</div> </div>
1	B	296	<div> <div>39%</div> <div>60%</div> <div>34%</div> <div>6%</div> </div>
1	C	296	<div> <div>4%</div> <div>80%</div> <div>19%</div> <div>.</div> </div>
1	D	296	<div> <div>11%</div> <div>76%</div> <div>22%</div> <div>.</div> </div>

The following table lists non-polymeric compounds, carbohydrate monomers and non-standard residues in protein, DNA, RNA chains that are outliers for geometric or electron-density-fit crite-

ria:

Mol	Type	Chain	Res	Chirality	Geometry	Clashes	Electron density
2	ILE	A	500	-	-	-	X
2	ILE	B	500	-	-	-	X
2	ILE	D	500	-	-	-	X

2 Entry composition [i](#)

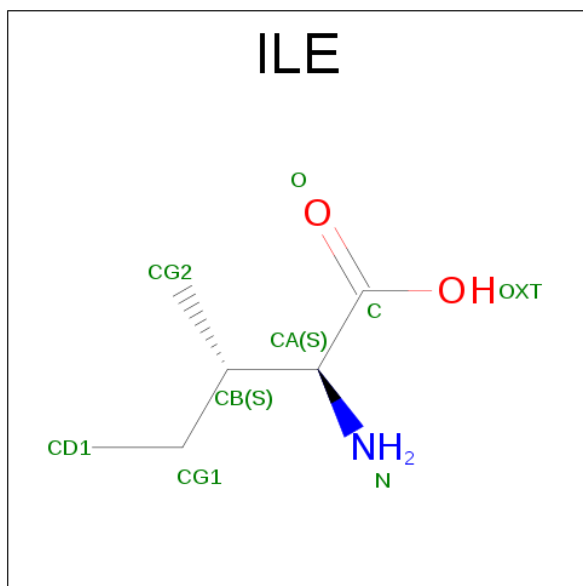
There are 6 unique types of molecules in this entry. The entry contains 9718 atoms, of which 0 are hydrogens and 0 are deuteriums.

In the tables below, the ZeroOcc column contains the number of atoms modelled with zero occupancy, the AltConf column contains the number of residues with at least one atom in alternate conformation and the Trace column contains the number of residues modelled with at most 2 atoms.

- Molecule 1 is a protein called HOMOSERINE KINASE.

Mol	Chain	Residues	Atoms					ZeroOcc	AltConf	Trace
1	A	296	Total	C	N	O	S	0	4	0
			2293	1472	370	442	9			
1	B	296	Total	C	N	O	S	0	2	0
			2281	1466	368	438	9			
1	C	296	Total	C	N	O	S	0	1	0
			2275	1463	367	436	9			
1	D	296	Total	C	N	O	S	0	1	0
			2275	1463	367	436	9			

- Molecule 2 is ISOLEUCINE (three-letter code: ILE) (formula: $C_6H_{13}NO_2$).



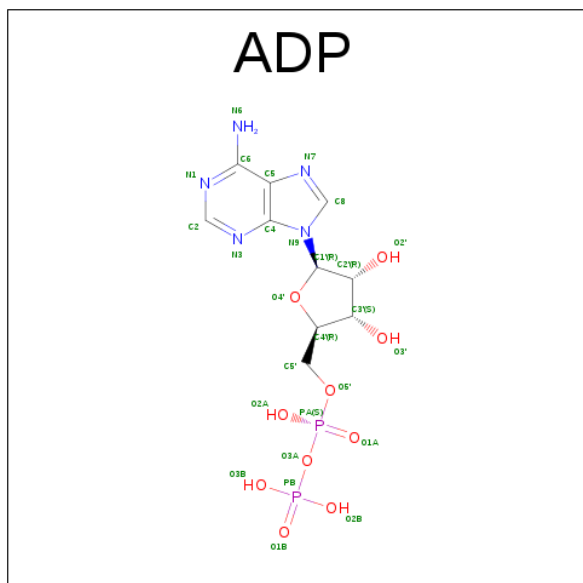
Mol	Chain	Residues	Atoms				ZeroOcc	AltConf
2	A	1	Total	C	N	O	0	0
			9	6	1	2		
2	B	1	Total	C	N	O	0	0
			9	6	1	2		

Continued on next page...

Continued from previous page...

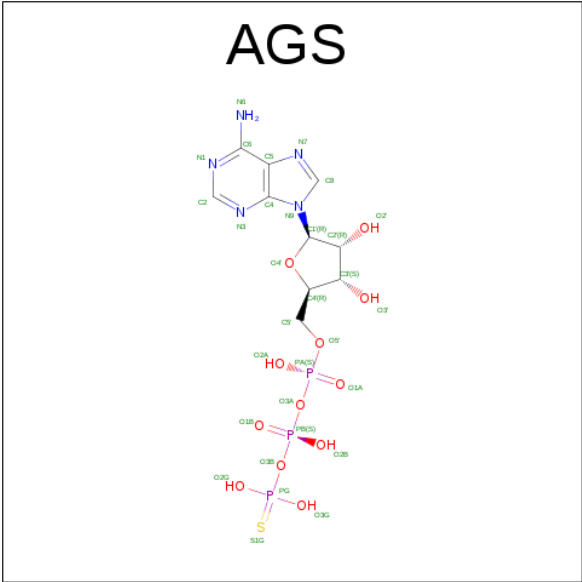
Mol	Chain	Residues	Atoms				ZeroOcc	AltConf
2	C	1	Total	C	N	O	0	0
			9	6	1	2		
2	D	1	Total	C	N	O	0	0
			9	6	1	2		

- Molecule 3 is ADENOSINE-5'-DIPHOSPHATE (three-letter code: ADP) (formula: $C_{10}H_{15}N_5O_{10}P_2$).



Mol	Chain	Residues	Atoms					ZeroOcc	AltConf
3	A	1	Total	C	N	O	P	0	0
			27	10	5	10	2		
3	C	1	Total	C	N	O	P	0	0
			27	10	5	10	2		

- Molecule 4 is PHOSPHOTHIOPHOSPHORIC ACID-ADENYLATE ESTER (three-letter code: AGS) (formula: $C_{10}H_{16}N_5O_{12}P_3S$).



Mol	Chain	Residues	Atoms						ZeroOcc	AltConf
4	B	1	Total	C	N	O	P	S	0	0
			31	10	5	12	3	1		
4	D	1	Total	C	N	O	P	S	0	0
			31	10	5	12	3	1		

- Molecule 5 is MAGNESIUM ION (three-letter code: MG) (formula: Mg).

Mol	Chain	Residues	Atoms		ZeroOcc	AltConf
5	B	1	Total	Mg	0	0
			1	1		

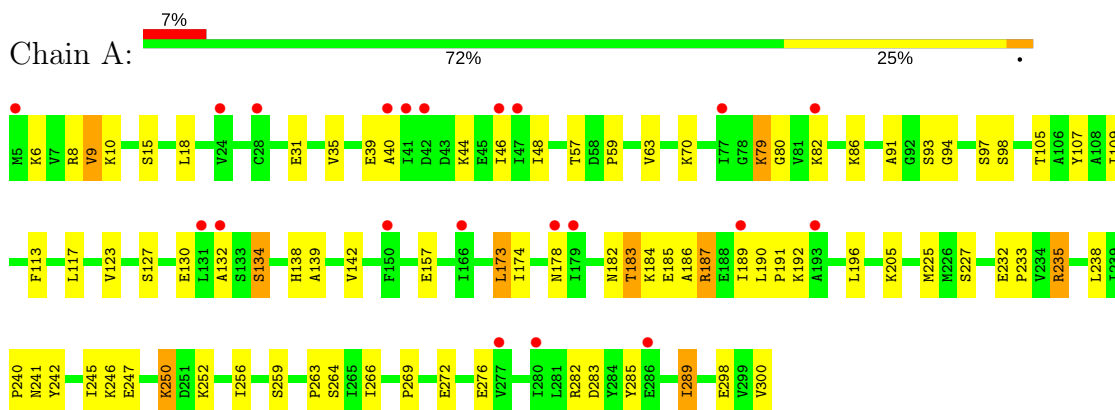
- Molecule 6 is water.

Mol	Chain	Residues	Atoms		ZeroOcc	AltConf
6	A	105	Total	O	0	0
			105	105		
6	B	73	Total	O	0	0
			73	73		
6	C	157	Total	O	0	0
			157	157		
6	D	106	Total	O	0	0
			106	106		

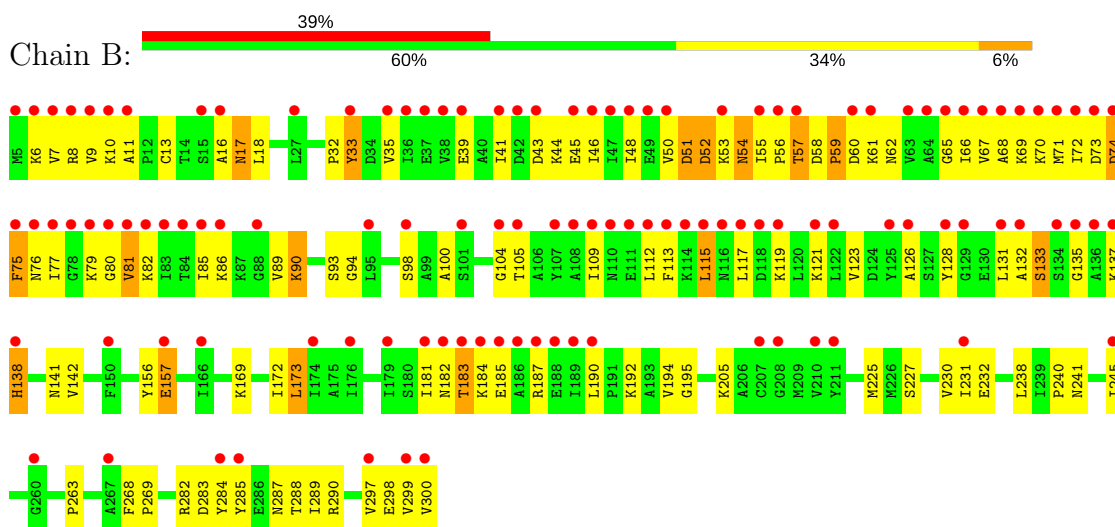
3 Residue-property plots

These plots are drawn for all protein, RNA and DNA chains in the entry. The first graphic for a chain summarises the proportions of the various outlier classes displayed in the second graphic. The second graphic shows the sequence view annotated by issues in geometry and electron density. Residues are color-coded according to the number of geometric quality criteria for which they contain at least one outlier: green = 0, yellow = 1, orange = 2 and red = 3 or more. A red dot above a residue indicates a poor fit to the electron density ($RSRZ > 2$). Stretches of 2 or more consecutive residues without any outlier are shown as a green connector. Residues present in the sample, but not in the model, are shown in grey.

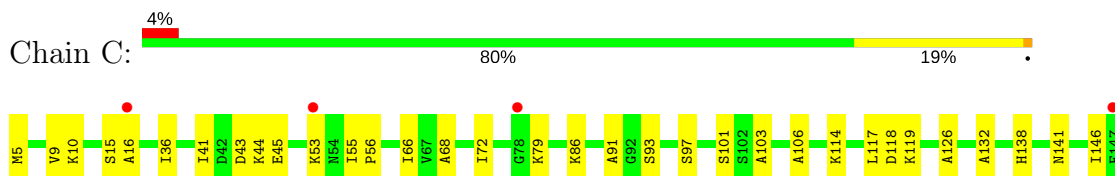
• Molecule 1: HOMOSERINE KINASE

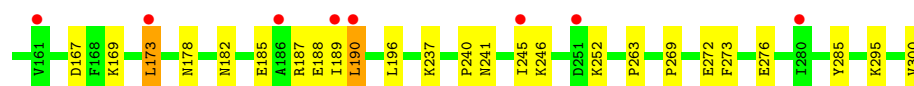


• Molecule 1: HOMOSERINE KINASE

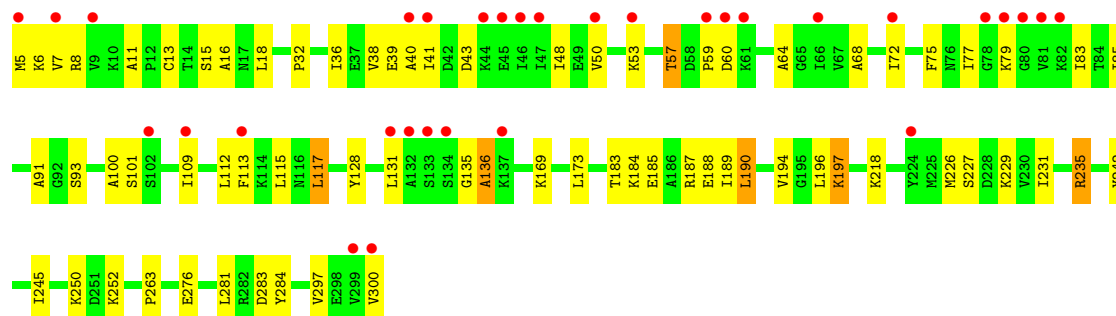
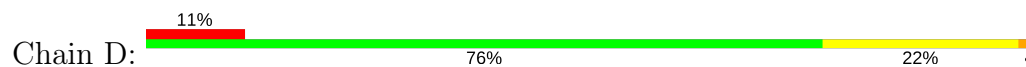


• Molecule 1: HOMOSERINE KINASE





● Molecule 1: HOMOSERINE KINASE



4 Data and refinement statistics

Property	Value	Source
Space group	P 1 21 1	Depositor
Cell constants a, b, c, α , β , γ	61.99Å 128.72Å 109.42Å 90.00° 105.57° 90.00°	Depositor
Resolution (Å)	50.00 – 1.90 48.77 – 1.89	Depositor EDS
% Data completeness (in resolution range)	99.3 (50.00-1.90) 98.8 (48.77-1.89)	Depositor EDS
R_{merge}	0.07	Depositor
R_{sym}	(Not available)	Depositor
$\langle I/\sigma(I) \rangle$ ¹	1.39 (at 1.88Å)	Xtriage
Refinement program	CNS 1.0	Depositor
R, R_{free}	0.210 , 0.238 0.282 , 0.302	Depositor DCC
R_{free} test set	6428 reflections (4.98%)	DCC
Wilson B-factor (Å ²)	34.0	Xtriage
Anisotropy	0.434	Xtriage
Bulk solvent k_{sol} (e/Å ³), B_{sol} (Å ²)	0.36 , 45.5	EDS
L-test for twinning ²	$\langle L \rangle = 0.47$, $\langle L^2 \rangle = 0.30$	Xtriage
Estimated twinning fraction	0.033 for h,-k,-h-l	Xtriage
F_o, F_c correlation	0.92	EDS
Total number of atoms	9718	wwPDB-VP
Average B, all atoms (Å ²)	50.0	wwPDB-VP

Xtriage's analysis on translational NCS is as follows: *The largest off-origin peak in the Patterson function is 5.11% of the height of the origin peak. No significant pseudotranslation is detected.*

¹Intensities estimated from amplitudes.

²Theoretical values of $\langle |L| \rangle$, $\langle L^2 \rangle$ for acentric reflections are 0.5, 0.333 respectively for untwinned datasets, and 0.375, 0.2 for perfectly twinned datasets.

5 Model quality [i](#)

5.1 Standard geometry [i](#)

Bond lengths and bond angles in the following residue types are not validated in this section: MG, AGS, ADP

The Z score for a bond length (or angle) is the number of standard deviations the observed value is removed from the expected value. A bond length (or angle) with $|Z| > 5$ is considered an outlier worth inspection. RMSZ is the root-mean-square of all Z scores of the bond lengths (or angles).

Mol	Chain	Bond lengths		Bond angles	
		RMSZ	$\# Z > 5$	RMSZ	$\# Z > 5$
1	A	0.68	2/2330 (0.1%)	0.79	2/3144 (0.1%)
1	B	0.53	0/2318	0.71	0/3128
1	C	0.79	3/2312 (0.1%)	0.80	1/3120 (0.0%)
1	D	0.71	2/2312 (0.1%)	0.76	0/3120
All	All	0.68	7/9272 (0.1%)	0.77	3/12512 (0.0%)

Chiral center outliers are detected by calculating the chiral volume of a chiral center and verifying if the center is modelled as a planar moiety or with the opposite hand. A planarity outlier is detected by checking planarity of atoms in a peptide group, atoms in a mainchain group or atoms of a sidechain that are expected to be planar.

Mol	Chain	#Chirality outliers	#Planarity outliers
1	D	0	1

All (7) bond length outliers are listed below:

Mol	Chain	Res	Type	Atoms	Z	Observed(Å)	Ideal(Å)
1	C	15[A]	SER	CB-OG	9.13	1.54	1.42
1	C	15[B]	SER	CB-OG	9.13	1.54	1.42
1	D	15[A]	SER	CB-OG	6.49	1.50	1.42
1	D	15[B]	SER	CB-OG	6.49	1.50	1.42
1	A	15[A]	SER	CB-OG	6.41	1.50	1.42
1	A	15[B]	SER	CB-OG	6.41	1.50	1.42
1	C	126	ALA	CA-CB	5.19	1.63	1.52

All (3) bond angle outliers are listed below:

Mol	Chain	Res	Type	Atoms	Z	Observed(°)	Ideal(°)
1	A	80	GLY	N-CA-C	-6.26	97.46	113.10
1	C	118	ASP	CB-CG-OD2	5.63	123.37	118.30

Continued on next page...

Continued from previous page...

Mol	Chain	Res	Type	Atoms	Z	Observed(°)	Ideal(°)
1	A	235	ARG	NE-CZ-NH1	-5.17	117.72	120.30

There are no chirality outliers.

All (1) planarity outliers are listed below:

Mol	Chain	Res	Type	Group
1	D	128	TYR	Sidechain

5.2 Too-close contacts [i](#)

In the following table, the Non-H and H(model) columns list the number of non-hydrogen atoms and hydrogen atoms in the chain respectively. The H(added) column lists the number of hydrogen atoms added and optimized by MolProbity. The Clashes column lists the number of clashes within the asymmetric unit, whereas Symm-Clashes lists symmetry related clashes.

Mol	Chain	Non-H	H(model)	H(added)	Clashes	Symm-Clashes
1	A	2293	0	2355	69	0
1	B	2281	0	2347	151	1
1	C	2275	0	2343	55	1
1	D	2275	0	2343	79	0
2	A	9	0	10	2	0
2	B	9	0	10	4	0
2	C	9	0	10	5	0
2	D	9	0	10	5	0
3	A	27	0	12	3	0
3	C	27	0	12	2	0
4	B	31	0	12	3	0
4	D	31	0	12	2	0
5	B	1	0	0	0	0
6	A	105	0	0	19	0
6	B	73	0	0	31	1
6	C	157	0	0	26	1
6	D	106	0	0	38	0
All	All	9718	0	9476	359	2

The all-atom clashscore is defined as the number of clashes found per 1000 atoms (including hydrogen atoms). The all-atom clashscore for this structure is 19.

All (359) close contacts within the same asymmetric unit are listed below, sorted by their clash magnitude.

Atom-1	Atom-2	Interatomic distance (Å)	Clash overlap (Å)
1:B:46:ILE:HA	6:B:2011:HOH:O	1.48	1.12
1:C:169:LYS:HD2	6:C:2097:HOH:O	1.54	1.06
1:B:288:THR:HB	6:B:2067:HOH:O	1.55	1.04
1:B:141:ASN:HD21	2:B:500:ILE:HD13	1.19	1.04
1:C:246:LYS:HB2	6:C:2129:HOH:O	1.58	1.03
1:C:106:ALA:HB3	6:C:2049:HOH:O	1.57	1.01
1:C:189:ILE:HG23	6:C:2104:HOH:O	1.61	1.00
1:B:50:VAL:HG22	1:B:85:ILE:HB	1.45	0.99
1:D:245:ILE:HD11	1:D:281:LEU:HD23	1.42	0.97
1:B:173:LEU:HD13	6:B:2028:HOH:O	1.66	0.95
1:C:119:LYS:HE2	6:C:2066:HOH:O	1.66	0.95
1:D:189:ILE:HB	6:D:2059:HOH:O	1.67	0.95
1:B:13:CYS:HA	6:B:2014:HOH:O	1.63	0.94
1:D:109:ILE:HG13	6:D:2015:HOH:O	1.66	0.94
1:A:182:ASN:HB2	6:A:2067:HOH:O	1.66	0.94
1:A:174:ILE:HB	6:A:2097:HOH:O	1.69	0.93
1:D:72:ILE:HG23	1:D:77:ILE:HB	1.51	0.92
1:D:64:ALA:HB1	6:D:2014:HOH:O	1.69	0.92
1:C:103:ALA:HA	6:C:2049:HOH:O	1.70	0.91
1:C:141:ASN:HD21	2:C:500:ILE:HD11	1.34	0.91
1:B:79:LYS:HB3	6:B:2008:HOH:O	1.72	0.88
1:B:141:ASN:ND2	2:B:500:ILE:HD13	1.88	0.87
1:A:138:HIS:HB3	6:A:2041:HOH:O	1.74	0.87
1:A:184:LYS:HG3	6:A:2067:HOH:O	1.75	0.86
1:B:141:ASN:HD21	2:B:500:ILE:CD1	1.90	0.83
1:D:187:ARG:HB2	6:D:2058:HOH:O	1.77	0.82
1:B:181:ILE:HG12	6:B:2052:HOH:O	1.78	0.82
1:D:250:LYS:HB3	6:D:2084:HOH:O	1.76	0.82
1:D:50:VAL:HB	6:D:2011:HOH:O	1.80	0.82
1:B:77:ILE:HD13	1:B:113:PHE:HD1	1.44	0.82
1:D:183:THR:HG21	6:D:2035:HOH:O	1.79	0.82
1:C:167:ASP:HB2	6:C:2114:HOH:O	1.81	0.81
1:C:141:ASN:HD21	2:C:500:ILE:CD1	1.94	0.80
1:C:182:ASN:HB3	1:C:185:GLU:CG	2.13	0.78
1:D:245:ILE:CD1	1:D:281:LEU:HD23	2.13	0.78
1:B:185:GLU:HA	6:B:2030:HOH:O	1.84	0.78
1:B:117:LEU:HD22	1:B:121:LYS:HG2	1.66	0.78
1:B:98:SER:HB2	6:B:2074:HOH:O	1.82	0.78
1:B:182:ASN:ND2	1:B:185:GLU:HG3	1.99	0.78
1:D:68:ALA:HA	6:D:2015:HOH:O	1.85	0.77
1:A:10:LYS:HG3	1:A:300:VAL:HG11	1.65	0.76
1:D:169:LYS:O	6:D:2053:HOH:O	2.03	0.76

Continued on next page...

Continued from previous page...

Atom-1	Atom-2	Interatomic distance (Å)	Clash overlap (Å)
1:C:53:LYS:HG2	6:C:2034:HOH:O	1.84	0.76
1:A:282:ARG:HA	1:A:285:TYR:O	1.83	0.76
1:D:235:ARG:HD3	6:D:2090:HOH:O	1.85	0.76
1:C:188:GLU:HB2	6:C:2104:HOH:O	1.85	0.76
1:A:252:LYS:HE2	1:A:276:GLU:OE1	1.86	0.76
1:D:187:ARG:HD2	6:D:2057:HOH:O	1.86	0.75
1:B:77:ILE:HD13	1:B:113:PHE:CD1	2.20	0.75
1:A:35:VAL:HB	1:A:86:LYS:HE3	1.66	0.74
1:D:72:ILE:HA	1:D:77:ILE:HD12	1.70	0.74
1:D:83:ILE:HD13	6:D:2014:HOH:O	1.86	0.74
1:A:18:LEU:HD22	1:A:225:MET:CE	2.17	0.74
1:B:6:LYS:HA	1:B:112:LEU:HD11	1.70	0.73
1:C:44:LYS:HE2	6:C:2040:HOH:O	1.87	0.73
1:B:94:GLY:HA2	4:B:400:AGS:S1G	2.29	0.73
1:A:238:LEU:HD23	6:A:2082:HOH:O	1.88	0.73
1:A:246:LYS:HE3	6:A:2086:HOH:O	1.88	0.73
1:A:82:LYS:HG2	6:A:2023:HOH:O	1.89	0.73
1:B:8:ARG:HH11	1:B:300:VAL:HG11	1.54	0.72
1:A:289:ILE:HG12	6:A:2097:HOH:O	1.90	0.72
1:B:9:VAL:HG23	1:B:298:GLU:C	2.10	0.71
1:B:35:VAL:HB	1:B:86:LYS:HB2	1.71	0.71
1:B:6:LYS:HD3	1:B:39:GLU:HG2	1.72	0.71
1:A:289:ILE:HG23	6:A:2097:HOH:O	1.91	0.71
1:A:187:ARG:HB2	6:A:2068:HOH:O	1.91	0.71
1:C:187:ARG:HA	1:C:190:LEU:HD22	1.73	0.70
1:D:38:VAL:HB	6:D:2026:HOH:O	1.91	0.70
1:C:187:ARG:O	1:C:190:LEU:HB2	1.91	0.70
1:A:18:LEU:HD22	1:A:225:MET:HE1	1.74	0.70
1:C:182:ASN:HB3	1:C:185:GLU:HG2	1.74	0.70
1:A:8:ARG:HD3	6:A:2013:HOH:O	1.90	0.70
1:B:56:PRO:O	1:B:62:ASN:HB2	1.92	0.70
1:A:183:THR:HG21	2:A:500:ILE:HD11	1.73	0.70
2:D:500:ILE:HG22	6:D:2040:HOH:O	1.90	0.70
1:A:94:GLY:O	6:A:2026:HOH:O	2.10	0.69
1:A:187:ARG:O	1:A:190:LEU:HB2	1.93	0.69
1:D:18:LEU:HD23	6:D:2089:HOH:O	1.91	0.69
1:B:282:ARG:O	1:B:285:TYR:O	2.10	0.69
1:C:91:ALA:HB1	3:C:400:ADP:H5'1	1.72	0.69
1:D:218:LYS:HD3	6:D:2053:HOH:O	1.93	0.69
1:B:9:VAL:HG23	1:B:298:GLU:O	1.92	0.68
1:C:178:ASN:HB2	6:C:2102:HOH:O	1.92	0.68

Continued on next page...

Continued from previous page...

Atom-1	Atom-2	Interatomic distance (Å)	Clash overlap (Å)
1:B:112:LEU:HD22	1:B:113:PHE:CD2	2.28	0.68
1:B:18:LEU:HD22	1:B:225:MET:CE	2.24	0.68
1:B:18:LEU:HD23	6:B:2004:HOH:O	1.93	0.68
1:B:18:LEU:HD22	1:B:225:MET:HE1	1.76	0.68
1:B:187:ARG:O	1:B:190:LEU:HB2	1.93	0.68
1:C:272:GLU:HG3	1:C:273:PHE:CD1	2.29	0.67
1:B:60:ASP:HA	1:B:69:LYS:NZ	2.10	0.67
1:B:48:ILE:HD12	1:B:59:PRO:HA	1.77	0.67
4:B:400:AGS:S1G	6:B:2060:HOH:O	2.51	0.67
1:A:94:GLY:C	6:A:2026:HOH:O	2.33	0.66
1:C:272:GLU:HG3	1:C:273:PHE:CE1	2.30	0.66
1:B:41:ILE:HG21	1:B:82:LYS:HG3	1.78	0.65
1:D:252:LYS:HE2	1:D:276:GLU:OE1	1.96	0.65
1:D:112:LEU:HD22	6:D:2026:HOH:O	1.96	0.65
1:C:246:LYS:HD2	6:C:2129:HOH:O	1.96	0.65
1:C:68:ALA:O	1:C:72:ILE:HG12	1.98	0.63
1:B:184:LYS:O	1:B:187:ARG:HB2	1.99	0.63
1:B:238:LEU:HB3	6:B:2052:HOH:O	1.98	0.63
1:B:9:VAL:HG21	1:B:297:VAL:HG12	1.80	0.63
1:C:246:LYS:CD	6:C:2129:HOH:O	2.47	0.63
1:D:7:VAL:HG12	6:D:2026:HOH:O	1.98	0.63
1:A:79:LYS:HD2	1:A:113:PHE:HE2	1.63	0.63
1:C:10:LYS:HE3	1:C:300:VAL:HG21	1.81	0.62
1:B:39:GLU:HB2	1:B:82:LYS:HB2	1.81	0.62
1:B:98:SER:N	6:B:2074:HOH:O	2.31	0.62
1:B:187:ARG:NH2	2:B:500:ILE:HA	2.13	0.62
1:C:189:ILE:N	6:C:2104:HOH:O	2.32	0.62
1:D:91:ALA:HB1	4:D:400:AGS:H5'1	1.81	0.62
1:B:7:VAL:HG23	6:B:2002:HOH:O	1.99	0.61
1:C:295:LYS:HE2	6:C:2095:HOH:O	2.00	0.61
1:B:72:ILE:HA	1:B:77:ILE:HD12	1.82	0.60
1:B:60:ASP:HA	1:B:69:LYS:HZ2	1.66	0.60
1:C:146:ILE:HD11	6:C:2049:HOH:O	2.00	0.60
1:C:246:LYS:HD3	6:C:2133:HOH:O	2.00	0.60
1:D:250:LYS:HD3	6:D:2084:HOH:O	2.00	0.60
1:A:238:LEU:HA	6:A:2082:HOH:O	2.00	0.60
1:D:6:LYS:HD3	1:D:39:GLU:OE1	2.01	0.60
1:B:131:LEU:HD22	1:B:135:GLY:O	2.01	0.60
1:B:194:VAL:HG11	1:B:230:VAL:HG22	1.82	0.60
1:A:91:ALA:HB1	3:A:400:ADP:H5'1	1.83	0.59
1:B:112:LEU:HD22	1:B:113:PHE:CE2	2.36	0.59

Continued on next page...

Continued from previous page...

Atom-1	Atom-2	Interatomic distance (Å)	Clash overlap (Å)
1:B:245:ILE:HD12	1:B:285:TYR:CE1	2.37	0.59
1:B:59:PRO:HB3	6:B:2009:HOH:O	2.01	0.59
1:B:7:VAL:HA	6:B:2002:HOH:O	2.03	0.59
1:B:299:VAL:HA	6:B:2072:HOH:O	2.03	0.58
1:A:18:LEU:HB3	1:A:225:MET:HE2	1.85	0.58
1:D:112:LEU:HB2	6:D:2026:HOH:O	2.04	0.58
1:D:75:PHE:HZ	1:D:117:LEU:HD11	1.67	0.58
1:B:185:GLU:C	1:B:187:ARG:H	2.07	0.57
1:D:75:PHE:CZ	1:D:117:LEU:HD11	2.38	0.57
1:D:188:GLU:N	6:D:2058:HOH:O	2.37	0.57
1:A:6:LYS:HB3	1:A:39:GLU:HG3	1.86	0.57
1:D:64:ALA:C	6:D:2014:HOH:O	2.44	0.56
1:C:66:ILE:HD13	1:C:132:ALA:CB	2.34	0.56
1:C:252:LYS:HE2	1:C:276:GLU:OE1	2.04	0.56
1:B:8:ARG:HB3	1:B:300:VAL:HG12	1.87	0.56
1:A:187:ARG:HA	1:A:190:LEU:HD22	1.88	0.56
1:B:46:ILE:HG21	6:B:2009:HOH:O	2.05	0.56
1:D:284:TYR:HB3	6:D:2097:HOH:O	2.06	0.56
1:A:272:GLU:HG2	6:A:2093:HOH:O	2.06	0.56
1:B:89:VAL:HG22	1:B:90:LYS:HG2	1.87	0.56
1:A:182:ASN:CB	6:A:2067:HOH:O	2.40	0.56
1:D:5:MET:HA	1:D:5:MET:CE	2.36	0.56
1:A:264:SER:HB2	6:A:2026:HOH:O	2.05	0.55
1:A:252:LYS:HE2	1:A:276:GLU:CD	2.27	0.55
1:A:40:ALA:HB1	1:A:79:LYS:HD3	1.87	0.55
1:B:18:LEU:HB3	1:B:225:MET:HE2	1.89	0.55
1:D:284:TYR:CB	6:D:2097:HOH:O	2.55	0.55
1:B:6:LYS:HD3	1:B:39:GLU:CG	2.37	0.55
1:C:173:LEU:HD22	1:C:269:PRO:HG3	1.89	0.55
1:C:93:SER:HA	1:C:263:PRO:HD2	1.89	0.55
1:B:172:ILE:C	6:B:2028:HOH:O	2.45	0.54
1:B:52:ASP:OD2	1:B:54:ASN:HB2	2.08	0.54
1:C:182:ASN:HB3	1:C:185:GLU:CD	2.28	0.54
1:B:113:PHE:O	1:B:115:LEU:HD12	2.07	0.54
1:B:66:ILE:O	1:B:69:LYS:HG2	2.07	0.54
1:D:72:ILE:HA	1:D:77:ILE:CD1	2.37	0.54
1:D:50:VAL:HG22	1:D:85:ILE:HD12	1.89	0.54
1:A:259[A]:SER:OG	1:A:266:ILE:HB	2.07	0.54
1:B:48:ILE:HD11	1:B:65:GLY:HA3	1.90	0.54
1:B:123:VAL:HG13	1:B:142:VAL:HG12	1.90	0.54
1:C:272:GLU:HG2	6:C:2140:HOH:O	2.08	0.53

Continued on next page...

Continued from previous page...

Atom-1	Atom-2	Interatomic distance (Å)	Clash overlap (Å)
1:D:185:GLU:O	1:D:189:ILE:HG13	2.08	0.53
1:B:173:LEU:HD22	1:B:269:PRO:HG3	1.90	0.53
1:B:185:GLU:HG2	6:B:2030:HOH:O	2.08	0.53
1:B:8:ARG:NH1	1:B:300:VAL:HG21	2.24	0.53
1:D:187:ARG:O	1:D:190:LEU:HB2	2.08	0.53
1:B:112:LEU:HD22	1:B:113:PHE:HD2	1.74	0.53
1:B:69:LYS:HG3	1:B:70:LYS:H	1.74	0.53
1:D:75:PHE:CD2	1:D:115:LEU:HD22	2.43	0.53
1:C:114:LYS:HD2	1:C:114:LYS:N	2.24	0.52
1:A:205:LYS:HG3	1:A:227[B]:SER:OG	2.08	0.52
1:B:69:LYS:HG3	1:B:70:LYS:N	2.24	0.52
1:B:81:VAL:N	6:B:2011:HOH:O	2.12	0.52
1:A:10:LYS:CG	1:A:300:VAL:HG11	2.38	0.52
1:C:86:LYS:HE2	6:C:2042:HOH:O	2.09	0.52
1:B:55:ILE:N	1:B:55:ILE:HD12	2.25	0.52
1:C:97:SER:HB3	3:C:400:ADP:O1B	2.10	0.52
1:C:41:ILE:O	1:C:79:LYS:HB3	2.09	0.52
1:A:105:THR:O	1:A:109:ILE:HG12	2.10	0.52
1:B:16:ALA:O	1:B:17:ASN:HB2	2.10	0.51
1:A:40:ALA:HB1	1:A:79:LYS:CD	2.40	0.51
1:B:41:ILE:CG2	1:B:82:LYS:HG3	2.40	0.51
1:B:8:ARG:HB3	1:B:300:VAL:CG1	2.40	0.51
1:B:282:ARG:HG3	6:B:2067:HOH:O	2.09	0.51
1:B:57:THR:O	1:B:59:PRO:HD3	2.09	0.51
1:B:126:ALA:HB3	1:B:142:VAL:HG11	1.92	0.51
1:A:178:ASN:O	1:A:178:ASN:ND2	2.43	0.51
1:D:197:LYS:HB2	1:D:197:LYS:NZ	2.25	0.51
1:A:173:LEU:HD22	1:A:269:PRO:HG3	1.92	0.50
1:B:75:PHE:HZ	1:B:117:LEU:HD21	1.75	0.50
1:B:77:ILE:O	1:B:79:LYS:HG3	2.11	0.50
1:B:52:ASP:C	1:B:54:ASN:H	2.15	0.50
1:B:181:ILE:CG1	6:B:2052:HOH:O	2.49	0.50
1:B:32:PRO:HG3	1:B:289:ILE:HD13	1.92	0.50
1:A:242:TYR:CZ	1:A:246:LYS:HD2	2.47	0.50
1:B:48:ILE:CD1	1:B:59:PRO:HA	2.40	0.50
1:A:241:ASN:O	1:A:245:ILE:HG13	2.12	0.50
1:B:9:VAL:CG2	1:B:297:VAL:HG12	2.42	0.50
1:A:189:ILE:HD11	1:A:235:ARG:HG2	1.94	0.50
1:A:79:LYS:HD2	1:A:113:PHE:CE2	2.45	0.50
1:A:192:LYS:HD2	6:A:2069:HOH:O	2.11	0.49
1:A:246:LYS:HG2	1:A:256:ILE:HG23	1.94	0.49

Continued on next page...

Continued from previous page...

Atom-1	Atom-2	Interatomic distance (Å)	Clash overlap (Å)
1:A:97:SER:HB3	3:A:400:ADP:O1B	2.11	0.49
1:C:138:HIS:HB3	6:C:2006:HOH:O	2.10	0.49
1:B:93:SER:HA	1:B:263:PRO:HD2	1.94	0.49
1:D:235:ARG:CD	6:D:2090:HOH:O	2.52	0.49
1:A:35:VAL:CB	1:A:86:LYS:HE3	2.38	0.49
1:B:72:ILE:HA	1:B:77:ILE:CD1	2.43	0.49
1:D:109:ILE:HG21	6:D:2015:HOH:O	2.13	0.49
1:A:18:LEU:HB3	1:A:225:MET:CE	2.43	0.49
1:C:246:LYS:HE2	6:C:2048:HOH:O	2.12	0.49
1:B:46:ILE:HD13	6:B:2009:HOH:O	2.12	0.49
1:D:188:GLU:HG2	6:D:2058:HOH:O	2.12	0.49
1:D:36:ILE:HD11	1:D:101:SER:HA	1.94	0.49
1:D:187:ARG:NH1	2:D:500:ILE:HA	2.28	0.49
1:D:7:VAL:CG1	6:D:2026:HOH:O	2.58	0.49
1:B:11:ALA:HB2	1:B:104:GLY:HA3	1.94	0.49
1:D:284:TYR:CA	6:D:2097:HOH:O	2.60	0.49
1:B:299:VAL:HG22	6:B:2072:HOH:O	2.12	0.48
1:B:48:ILE:HD13	1:B:62:ASN:HB3	1.94	0.48
1:A:130:GLU:O	1:A:134:SER:HB2	2.13	0.48
1:D:184:LYS:O	6:D:2058:HOH:O	2.20	0.48
1:D:48:ILE:O	1:D:57:THR:HG22	2.13	0.48
1:D:5:MET:O	1:D:39:GLU:HG3	2.13	0.48
1:B:119:LYS:O	1:B:123:VAL:HG23	2.14	0.48
1:B:6:LYS:HB3	1:B:39:GLU:HG2	1.96	0.48
1:D:187:ARG:HH12	2:D:500:ILE:HA	1.79	0.48
1:B:89:VAL:HG22	1:B:90:LYS:N	2.28	0.48
1:D:8:ARG:HB3	1:D:300:VAL:HG13	1.95	0.48
1:B:137:LYS:O	1:B:138:HIS:O	2.32	0.48
1:C:141:ASN:ND2	2:C:500:ILE:HD11	2.16	0.48
1:D:11:ALA:HB1	1:D:100:ALA:O	2.14	0.48
1:B:183:THR:CG2	6:B:2073:HOH:O	2.61	0.47
1:B:51:ASP:OD2	1:B:86:LYS:HA	2.14	0.47
1:D:16:ALA:HB3	6:D:2040:HOH:O	2.13	0.47
1:D:183:THR:CG2	6:D:2035:HOH:O	2.52	0.47
1:B:245:ILE:HD11	1:B:284:TYR:CG	2.49	0.47
1:B:56:PRO:HB2	1:B:61:LYS:HB3	1.95	0.47
1:D:226:MET:HE1	6:D:2085:HOH:O	2.14	0.47
1:B:245:ILE:HD11	1:B:284:TYR:CB	2.45	0.47
1:D:252:LYS:HE2	1:D:276:GLU:CD	2.33	0.47
1:A:182:ASN:OD1	1:A:185:GLU:HG3	2.14	0.47
1:B:46:ILE:O	1:B:59:PRO:CG	2.63	0.47

Continued on next page...

Continued from previous page...

Atom-1	Atom-2	Interatomic distance (Å)	Clash overlap (Å)
1:C:10:LYS:HE2	6:C:2003:HOH:O	2.15	0.47
1:D:190:LEU:HG	1:D:231:ILE:HD12	1.97	0.47
1:D:242:TYR:O	1:D:245:ILE:HG22	2.15	0.47
1:D:40:ALA:HB1	1:D:79:LYS:CD	2.45	0.46
1:B:138:HIS:CE1	1:B:187:ARG:NH2	2.83	0.46
1:B:33:TYR:O	1:B:33:TYR:CD1	2.67	0.46
1:B:43:ASP:O	1:B:45:GLU:N	2.48	0.46
1:A:18:LEU:CB	1:A:225:MET:HE2	2.45	0.46
1:D:187:ARG:HA	1:D:190:LEU:HD22	1.97	0.46
1:B:52:ASP:O	1:B:54:ASN:N	2.48	0.46
1:B:68:ALA:O	1:B:72:ILE:HG13	2.16	0.46
1:B:282:ARG:CG	6:B:2067:HOH:O	2.62	0.46
1:C:182:ASN:CB	1:C:185:GLU:HG2	2.44	0.46
1:B:105:THR:O	1:B:109:ILE:HG12	2.15	0.46
1:B:131:LEU:C	1:B:131:LEU:HD13	2.36	0.46
1:D:40:ALA:HB1	1:D:79:LYS:HD2	1.97	0.46
1:B:33:TYR:O	1:B:33:TYR:HD1	1.99	0.46
1:B:225:MET:HE1	1:B:268:PHE:HE1	1.80	0.46
1:D:64:ALA:CA	6:D:2014:HOH:O	2.64	0.45
1:B:245:ILE:CD1	1:B:285:TYR:CE1	2.99	0.45
1:B:32:PRO:CG	1:B:289:ILE:HD13	2.47	0.45
1:B:69:LYS:CG	1:B:70:LYS:H	2.28	0.45
1:C:241:ASN:O	1:C:245:ILE:HG13	2.16	0.45
1:A:183:THR:O	1:A:183:THR:HG22	2.16	0.45
1:B:137:LYS:O	1:B:138:HIS:C	2.54	0.45
1:B:77:ILE:HG21	1:B:113:PHE:CD1	2.52	0.45
1:D:135:GLY:O	1:D:136:ALA:HB2	2.17	0.45
1:D:6:LYS:HB3	1:D:39:GLU:HG3	1.98	0.45
1:B:181:ILE:CD1	6:B:2052:HOH:O	2.64	0.45
1:B:288:THR:HG22	1:B:289:ILE:N	2.32	0.45
1:C:36:ILE:HD11	1:C:101:SER:HA	1.98	0.45
1:B:132:ALA:O	1:B:133:SER:HB2	2.16	0.45
1:D:41:ILE:HG13	1:D:43:ASP:O	2.16	0.45
1:D:227:SER:O	1:D:229:LYS:HE2	2.16	0.45
1:B:113:PHE:N	1:B:113:PHE:CD2	2.83	0.45
1:A:187:ARG:NH1	2:A:500:ILE:OXT	2.50	0.44
1:A:123:VAL:HG13	1:A:142:VAL:HG23	1.99	0.44
1:D:93:SER:HA	1:D:263:PRO:HD2	1.98	0.44
1:C:252:LYS:HE2	1:C:276:GLU:CD	2.38	0.44
1:D:50:VAL:HG22	1:D:85:ILE:HB	1.99	0.44
1:B:58:ASP:O	1:B:60:ASP:N	2.50	0.44

Continued on next page...

Continued from previous page...

Atom-1	Atom-2	Interatomic distance (Å)	Clash overlap (Å)
1:B:67:VAL:O	1:B:71:MET:HB2	2.18	0.44
1:B:173:LEU:HD12	1:B:290:ARG:HA	1.98	0.44
1:A:46:ILE:O	1:A:59:PRO:HG3	2.18	0.44
1:B:6:LYS:HA	1:B:112:LEU:CD1	2.45	0.44
1:B:71:MET:O	1:B:72:ILE:C	2.56	0.44
1:A:183:THR:HA	1:A:186:ALA:CB	2.48	0.44
1:A:9:VAL:HG21	1:A:107:TYR:CD2	2.53	0.44
1:B:41:ILE:N	6:B:2008:HOH:O	2.51	0.44
1:B:194:VAL:HG12	1:B:195:GLY:H	1.83	0.43
1:B:46:ILE:HB	1:B:59:PRO:HB3	2.00	0.43
1:B:128:TYR:CE1	1:B:137:LYS:HE2	2.53	0.43
1:B:185:GLU:C	1:B:187:ARG:N	2.71	0.43
1:C:178:ASN:CB	6:C:2102:HOH:O	2.61	0.43
1:D:77:ILE:HD13	1:D:113:PHE:CD1	2.53	0.43
1:B:245:ILE:HD12	1:B:285:TYR:HE1	1.80	0.43
1:D:131:LEU:O	1:D:135:GLY:N	2.51	0.43
1:D:229:LYS:HD3	1:D:229:LYS:HA	1.72	0.43
1:B:232:GLU:O	1:B:232:GLU:HG3	2.19	0.43
1:B:69:LYS:CG	1:B:70:LYS:N	2.81	0.43
2:D:500:ILE:HG21	4:D:400:AGS:S1G	2.59	0.43
1:A:98:SER:HB3	3:A:400:ADP:O2B	2.17	0.43
1:A:190:LEU:HD11	1:A:235:ARG:NH2	2.33	0.43
1:B:48:ILE:HD11	1:B:65:GLY:CA	2.49	0.43
1:D:64:ALA:CB	6:D:2014:HOH:O	2.44	0.43
1:C:43:ASP:O	1:C:45:GLU:N	2.52	0.42
1:C:103:ALA:CA	6:C:2049:HOH:O	2.46	0.42
1:D:250:LYS:CD	6:D:2084:HOH:O	2.63	0.42
1:B:115:LEU:HD12	1:B:115:LEU:H	1.84	0.42
1:A:93:SER:HA	1:A:263:PRO:HD2	2.00	0.42
1:C:240:PRO:O	1:C:285:TYR:OH	2.28	0.42
1:B:8:ARG:HH12	1:B:300:VAL:HG21	1.82	0.42
1:D:11:ALA:HA	1:D:297:VAL:HG22	2.02	0.42
1:B:74:ASP:C	1:B:76:ASN:H	2.23	0.42
1:A:139:ALA:HA	1:A:142:VAL:HG22	2.02	0.42
1:A:48:ILE:O	1:A:57:THR:HG23	2.20	0.42
1:B:100:ALA:HB2	6:B:2014:HOH:O	2.20	0.42
1:C:141:ASN:ND2	2:C:500:ILE:CD1	2.73	0.42
1:B:183:THR:HG23	6:B:2073:HOH:O	2.19	0.42
1:C:119:LYS:NZ	6:C:2067:HOH:O	2.52	0.42
1:B:156:TYR:O	1:B:157:GLU:C	2.58	0.41
1:B:46:ILE:O	1:B:59:PRO:HG3	2.20	0.41

Continued on next page...

Continued from previous page...

Atom-1	Atom-2	Interatomic distance (Å)	Clash overlap (Å)
1:B:58:ASP:O	1:B:61:LYS:N	2.51	0.41
1:D:13:CYS:SG	1:D:32:PRO:HG2	2.60	0.41
1:A:247:GLU:O	1:A:250:LYS:HB2	2.19	0.41
1:A:79:LYS:H	1:A:79:LYS:HG3	1.60	0.41
1:B:75:PHE:CE2	1:B:115:LEU:HG	2.55	0.41
1:A:242:TYR:OH	1:A:246:LYS:HD2	2.20	0.41
1:B:190:LEU:HG	1:B:231:ILE:CD1	2.49	0.41
1:B:80:GLY:O	1:B:81:VAL:HG13	2.21	0.41
1:D:187:ARG:CD	6:D:2057:HOH:O	2.56	0.41
1:B:205:LYS:HG3	1:B:227[A]:SER:OG	2.21	0.41
4:B:400:AGS:PB	6:B:2074:HOH:O	2.79	0.41
1:C:16:ALA:HB3	2:C:500:ILE:HD11	2.03	0.41
2:D:500:ILE:CG2	6:D:2040:HOH:O	2.59	0.41
1:B:9:VAL:HG22	1:B:10:LYS:N	2.36	0.41
1:B:51:ASP:O	1:B:52:ASP:O	2.39	0.41
1:A:240:PRO:O	1:A:241:ASN:HB2	2.21	0.41
1:B:11:ALA:HB1	1:B:100:ALA:O	2.21	0.41
1:B:194:VAL:HG12	1:B:195:GLY:N	2.36	0.41
1:C:55:ILE:HA	1:C:56:PRO:HD3	1.90	0.41
1:D:18:LEU:HA	1:D:18:LEU:HD23	1.86	0.41
1:A:190:LEU:HA	1:A:191:PRO:HD3	1.93	0.41
1:C:246:LYS:CB	6:C:2129:HOH:O	2.40	0.41
1:D:197:LYS:HZ2	1:D:197:LYS:HB2	1.86	0.40
1:B:157:GLU:O	1:B:157:GLU:OE1	2.40	0.40
1:B:240:PRO:O	1:B:241:ASN:HB2	2.21	0.40
1:B:113:PHE:O	1:B:115:LEU:CD1	2.69	0.40
1:A:8:ARG:HB2	6:A:2013:HOH:O	2.22	0.40
1:A:9:VAL:HG22	1:A:298:GLU:O	2.22	0.40
1:B:66:ILE:HA	1:B:69:LYS:HG2	2.02	0.40
1:D:173:LEU:HA	1:D:173:LEU:HD23	1.95	0.40

All (2) symmetry-related close contacts are listed below. The label for Atom-2 includes the symmetry operator and encoded unit-cell translations to be applied.

Atom-1	Atom-2	Interatomic distance (Å)	Clash overlap (Å)
6:B:2069:HOH:O	6:C:2127:HOH:O[2_747]	1.90	0.30
1:B:283:ASP:O	1:C:237:LYS:NZ[2_747]	2.09	0.11

5.3 Torsion angles

5.3.1 Protein backbone

In the following table, the Percentiles column shows the percent Ramachandran outliers of the chain as a percentile score with respect to all X-ray entries followed by that with respect to entries of similar resolution.

The Analysed column shows the number of residues for which the backbone conformation was analysed, and the total number of residues.

Mol	Chain	Analysed	Favoured	Allowed	Outliers	Percentiles	
1	A	298/296 (101%)	283 (95%)	9 (3%)	6 (2%)	9	2
1	B	296/296 (100%)	252 (85%)	31 (10%)	13 (4%)	3	0
1	C	295/296 (100%)	287 (97%)	8 (3%)	0	100	100
1	D	295/296 (100%)	279 (95%)	14 (5%)	2 (1%)	25	13
All	All	1184/1184 (100%)	1101 (93%)	62 (5%)	21 (2%)	10	2

All (21) Ramachandran outliers are listed below:

Mol	Chain	Res	Type
1	B	115	LEU
1	B	133	SER
1	B	138	HIS
1	A	183	THR
1	B	44	LYS
1	B	51	ASP
1	B	53	LYS
1	B	90	LYS
1	A	79	LYS
1	B	74	ASP
1	B	75	PHE
1	B	183	THR
1	D	136	ALA
1	A	134	SER
1	A	250	LYS
1	B	52	ASP
1	A	44	LYS
1	A	132	ALA
1	B	59	PRO
1	B	17	ASN
1	D	59	PRO

5.3.2 Protein sidechains ⓘ

In the following table, the Percentiles column shows the percent sidechain outliers of the chain as a percentile score with respect to all X-ray entries followed by that with respect to entries of similar resolution.

The Analysed column shows the number of residues for which the sidechain conformation was analysed, and the total number of residues.

Mol	Chain	Analysed	Rotameric	Outliers	Percentiles	
1	A	252/248 (102%)	237 (94%)	15 (6%)	22	11
1	B	250/248 (101%)	240 (96%)	10 (4%)	36	25
1	C	249/248 (100%)	243 (98%)	6 (2%)	54	47
1	D	249/248 (100%)	239 (96%)	10 (4%)	36	25
All	All	1000/992 (101%)	959 (96%)	41 (4%)	35	24

All (41) residues with a non-rotameric sidechain are listed below:

Mol	Chain	Res	Type
1	A	9	VAL
1	A	31	GLU
1	A	63	VAL
1	A	70	LYS
1	A	117	LEU
1	A	127[A]	SER
1	A	127[B]	SER
1	A	157	GLU
1	A	173	LEU
1	A	187	ARG
1	A	196	LEU
1	A	232	GLU
1	A	233	PRO
1	A	283	ASP
1	A	289	ILE
1	B	33	TYR
1	B	54	ASN
1	B	57	THR
1	B	73	ASP
1	B	81	VAL
1	B	157	GLU
1	B	169	LYS
1	B	173	LEU
1	B	192	LYS

Continued on next page...

Continued from previous page...

Mol	Chain	Res	Type
1	B	287	ASN
1	C	5	MET
1	C	9	VAL
1	C	117	LEU
1	C	173	LEU
1	C	190	LEU
1	C	196	LEU
1	D	53	LYS
1	D	57	THR
1	D	60	ASP
1	D	117	LEU
1	D	190	LEU
1	D	194	VAL
1	D	196	LEU
1	D	197	LYS
1	D	235	ARG
1	D	283	ASP

Some sidechains can be flipped to improve hydrogen bonding and reduce clashes. All (6) such sidechains are listed below:

Mol	Chain	Res	Type
1	A	178	ASN
1	B	138	HIS
1	B	141	ASN
1	B	163	HIS
1	C	141	ASN
1	D	138	HIS

5.3.3 RNA ⓘ

There are no RNA molecules in this entry.

5.4 Non-standard residues in protein, DNA, RNA chains ⓘ

There are no non-standard protein/DNA/RNA residues in this entry.

5.5 Carbohydrates ⓘ

There are no carbohydrates in this entry.

5.6 Ligand geometry

Of 9 ligands modelled in this entry, 1 is monoatomic - leaving 8 for Mogul analysis.

In the following table, the Counts columns list the number of bonds (or angles) for which Mogul statistics could be retrieved, the number of bonds (or angles) that are observed in the model and the number of bonds (or angles) that are defined in the chemical component dictionary. The Link column lists molecule types, if any, to which the group is linked. The Z score for a bond length (or angle) is the number of standard deviations the observed value is removed from the expected value. A bond length (or angle) with $|Z| > 2$ is considered an outlier worth inspection. RMSZ is the root-mean-square of all Z scores of the bond lengths (or angles).

Mol	Type	Chain	Res	Link	Bond lengths			Bond angles		
					Counts	RMSZ	# $ Z > 2$	Counts	RMSZ	# $ Z > 2$
3	ADP	A	400	-	25,29,29	1.61	4 (16%)	24,45,45	1.83	5 (20%)
2	ILE	A	500	-	5,8,8	0.64	0	4,10,10	0.30	0
4	AGS	B	400	5	26,33,33	1.37	3 (11%)	22,52,52	1.44	1 (4%)
2	ILE	B	500	-	5,8,8	0.38	0	4,10,10	0.45	0
3	ADP	C	400	-	25,29,29	1.61	3 (12%)	24,45,45	1.67	3 (12%)
2	ILE	C	500	-	5,8,8	0.63	0	4,10,10	0.65	0
4	AGS	D	400	-	26,33,33	1.49	5 (19%)	22,52,52	1.40	1 (4%)
2	ILE	D	500	-	5,8,8	0.51	0	4,10,10	0.43	0

In the following table, the Chirals column lists the number of chiral outliers, the number of chiral centers analysed, the number of these observed in the model and the number defined in the chemical component dictionary. Similar counts are reported in the Torsion and Rings columns. '-' means no outliers of that kind were identified.

Mol	Type	Chain	Res	Link	Chirals	Torsions	Rings
3	ADP	A	400	-	-	0/12/32/32	0/3/3/3
2	ILE	A	500	-	-	0/6/10/10	0/0/0/0
4	AGS	B	400	5	-	0/17/38/38	0/3/3/3
2	ILE	B	500	-	-	0/6/10/10	0/0/0/0
3	ADP	C	400	-	-	0/12/32/32	0/3/3/3
2	ILE	C	500	-	-	0/6/10/10	0/0/0/0
4	AGS	D	400	-	-	0/17/38/38	0/3/3/3
2	ILE	D	500	-	-	0/6/10/10	0/0/0/0

All (15) bond length outliers are listed below:

Mol	Chain	Res	Type	Atoms	Z	Observed(Å)	Ideal(Å)
3	C	400	ADP	PB-O3A	-4.30	1.53	1.60
3	A	400	ADP	PB-O3A	-3.08	1.55	1.60
4	D	400	AGS	O4'-C1'	2.07	1.44	1.41

Continued on next page...

Continued from previous page...

Mol	Chain	Res	Type	Atoms	Z	Observed(Å)	Ideal(Å)
4	D	400	AGS	C2-N1	2.27	1.38	1.33
4	B	400	AGS	O4'-C1'	2.27	1.44	1.41
4	D	400	AGS	C4-N3	2.34	1.39	1.35
3	A	400	ADP	C2-N1	2.44	1.38	1.33
4	D	400	AGS	C2-N3	2.75	1.36	1.32
3	C	400	ADP	C2-N3	2.75	1.36	1.32
4	B	400	AGS	C2-N3	3.35	1.37	1.32
4	B	400	AGS	PG-S1G	3.47	1.97	1.90
3	A	400	ADP	C2-N3	3.50	1.38	1.32
3	A	400	ADP	C4-N3	3.83	1.41	1.35
3	C	400	ADP	C4-N3	4.63	1.42	1.35
4	D	400	AGS	PG-S1G	4.73	1.99	1.90

All (10) bond angle outliers are listed below:

Mol	Chain	Res	Type	Atoms	Z	Observed(°)	Ideal(°)
3	C	400	ADP	N3-C2-N1	-4.22	125.18	128.86
3	A	400	ADP	N3-C2-N1	-3.67	125.67	128.86
3	A	400	ADP	C4-C5-N7	2.15	111.49	109.41
3	A	400	ADP	O2B-PB-O1B	2.29	119.46	110.50
3	C	400	ADP	O2B-PB-O1B	2.35	119.70	110.50
3	A	400	ADP	O2'-C2'-C3'	2.48	119.76	111.83
3	C	400	ADP	C1'-N9-C4	4.56	134.52	126.64
4	D	400	AGS	C1'-N9-C4	5.01	135.28	126.64
4	B	400	AGS	C1'-N9-C4	5.17	135.56	126.64
3	A	400	ADP	C1'-N9-C4	5.81	136.67	126.64

There are no chirality outliers.

There are no torsion outliers.

There are no ring outliers.

8 monomers are involved in 25 short contacts:

Mol	Chain	Res	Type	Clashes	Symm-Clashes
3	A	400	ADP	3	0
2	A	500	ILE	2	0
4	B	400	AGS	3	0
2	B	500	ILE	4	0
3	C	400	ADP	2	0
2	C	500	ILE	5	0
4	D	400	AGS	2	0
2	D	500	ILE	5	0

5.7 Other polymers [i](#)

There are no such residues in this entry.

5.8 Polymer linkage issues [i](#)

There are no chain breaks in this entry.

6 Fit of model and data

6.1 Protein, DNA and RNA chains

In the following table, the column labelled ‘#RSRZ > 2’ contains the number (and percentage) of RSRZ outliers, followed by percent RSRZ outliers for the chain as percentile scores relative to all X-ray entries and entries of similar resolution. The OWAB column contains the minimum, median, 95th percentile and maximum values of the occupancy-weighted average B-factor per residue. The column labelled ‘Q < 0.9’ lists the number of (and percentage) of residues with an average occupancy less than 0.9.

Mol	Chain	Analysed	<RSRZ>	#RSRZ>2	OWAB(Å ²)	Q<0.9
1	A	296/296 (100%)	0.90	21 (7%) 17 19	28, 44, 71, 84	0
1	B	296/296 (100%)	2.08	116 (39%) 0 0	28, 56, 109, 115	0
1	C	296/296 (100%)	0.82	12 (4%) 38 42	22, 39, 64, 80	0
1	D	296/296 (100%)	1.14	32 (10%) 6 7	24, 43, 77, 89	0
All	All	1184/1184 (100%)	1.23	181 (15%) 2 2	22, 45, 97, 115	0

All (181) RSRZ outliers are listed below:

Mol	Chain	Res	Type	RSRZ
1	B	72	ILE	13.3
1	B	78	GLY	11.1
1	B	186	ALA	11.0
1	B	132	ALA	9.5
1	B	134	SER	9.5
1	D	78	GLY	9.3
1	B	5	MET	8.6
1	B	47	ILE	7.9
1	B	112	LEU	7.2
1	D	5	MET	7.1
1	D	41	ILE	6.6
1	B	128	TYR	6.6
1	D	7	VAL	6.5
1	B	300	VAL	6.3
1	B	82	LYS	6.1
1	B	117	LEU	6.0
1	B	48	ILE	5.7
1	B	75	PHE	5.6
1	B	115	LEU	5.6
1	B	68	ALA	5.5
1	B	38	VAL	5.5

Continued on next page...

Continued from previous page...

Mol	Chain	Res	Type	RSRZ
1	B	41	ILE	5.3
1	B	189	ILE	5.2
1	B	114	LYS	4.9
1	B	77	ILE	4.8
1	B	7	VAL	4.7
1	B	109	ILE	4.5
1	D	72	ILE	4.5
1	B	37	GLU	4.5
1	B	135	GLY	4.4
1	B	43	ASP	4.4
1	D	133	SER	4.4
1	B	80	GLY	4.2
1	D	66	ILE	4.2
1	B	61	LYS	4.2
1	B	6	LYS	4.2
1	B	45	GLU	4.1
1	B	113	PHE	4.1
1	B	183	THR	4.1
1	B	299	VAL	4.1
1	B	8	ARG	4.1
1	B	108	ALA	4.0
1	A	132	ALA	4.0
1	B	65	GLY	3.9
1	B	83	ILE	3.9
1	B	70	LYS	3.8
1	B	46	ILE	3.8
1	D	60	ASP	3.8
1	B	122	LEU	3.8
1	B	53	LYS	3.8
1	D	80	GLY	3.8
1	D	81	VAL	3.8
1	B	88	GLY	3.7
1	B	86	LYS	3.7
1	B	42	ASP	3.7
1	B	136	ALA	3.7
1	D	300	VAL	3.7
1	B	137	LYS	3.7
1	B	64	ALA	3.6
1	B	73	ASP	3.6
1	B	81	VAL	3.6
1	D	299	VAL	3.6
1	B	76	ASN	3.6

Continued on next page...

Continued from previous page...

Mol	Chain	Res	Type	RSRZ
1	B	33	TYR	3.5
1	B	67	VAL	3.5
1	D	45	GLU	3.5
1	A	46	ILE	3.5
1	B	39	GLU	3.5
1	B	107	TYR	3.5
1	C	78	GLY	3.4
1	B	131	LEU	3.4
1	B	138	HIS	3.4
1	B	121	LYS	3.4
1	B	166	ILE	3.4
1	C	189	ILE	3.3
1	D	134	SER	3.3
1	D	44	LYS	3.3
1	D	40	ALA	3.3
1	A	5	MET	3.3
1	B	190	LEU	3.2
1	B	84	THR	3.2
1	D	59	PRO	3.1
1	B	245	ILE	3.1
1	B	101	SER	3.1
1	B	187	ARG	3.1
1	A	189	ILE	3.0
1	B	284	TYR	3.0
1	B	79	LYS	3.0
1	D	131	LEU	3.0
1	A	277	VAL	3.0
1	B	50	VAL	3.0
1	B	11	ALA	2.9
1	D	132	ALA	2.9
1	B	105	THR	2.9
1	A	286	GLU	2.9
1	B	9	VAL	2.8
1	B	184	LYS	2.8
1	B	66	ILE	2.8
1	D	47	ILE	2.8
1	B	71	MET	2.8
1	A	131	LEU	2.8
1	B	126	ALA	2.8
1	B	129	GLY	2.8
1	B	35	VAL	2.8
1	B	188	GLU	2.8

Continued on next page...

Continued from previous page...

Mol	Chain	Res	Type	RSRZ
1	C	16	ALA	2.7
1	B	49	GLU	2.7
1	B	210	VAL	2.7
1	D	79	LYS	2.7
1	A	166	ILE	2.7
1	B	98	SER	2.7
1	D	53	LYS	2.7
1	B	157	GLU	2.7
1	B	69	LYS	2.6
1	B	125	TYR	2.6
1	B	111	GLU	2.6
1	B	10	LYS	2.6
1	D	46	ILE	2.6
1	B	60	ASP	2.6
1	B	95	LEU	2.6
1	A	77	ILE	2.6
1	C	245	ILE	2.6
1	C	190	LEU	2.5
1	D	113	PHE	2.5
1	B	211	TYR	2.5
1	B	182	ASN	2.5
1	D	50	VAL	2.5
1	B	185	GLU	2.5
1	A	40	ALA	2.5
1	A	41	ILE	2.4
1	D	109	ILE	2.4
1	C	53	LYS	2.4
1	D	137	LYS	2.4
1	A	179	ILE	2.4
1	B	36	ILE	2.4
1	B	85	ILE	2.4
1	B	231	ILE	2.4
1	B	119	LYS	2.4
1	B	110	ASN	2.4
1	B	174	ILE	2.4
1	B	116	ASN	2.3
1	B	297	VAL	2.3
1	B	56	PRO	2.3
1	C	161	VAL	2.3
1	D	9	VAL	2.3
1	A	42	ASP	2.3
1	B	74	ASP	2.3

Continued on next page...

Continued from previous page...

Mol	Chain	Res	Type	RSRZ
1	D	82	LYS	2.3
1	C	186	ALA	2.3
1	B	57	THR	2.3
1	B	15[A]	SER	2.3
1	A	193	ALA	2.3
1	B	267	ALA	2.3
1	B	207	CYS	2.3
1	B	176	ILE	2.2
1	B	118	ASP	2.2
1	B	55	ILE	2.2
1	A	28	CYS	2.2
1	D	224	TYR	2.2
1	D	102	SER	2.2
1	B	179	ILE	2.2
1	A	150	PHE	2.2
1	B	260	GLY	2.2
1	C	251	ASP	2.2
1	C	280	ILE	2.2
1	C	147	PHE	2.2
1	A	178	ASN	2.1
1	B	63	VAL	2.1
1	D	61	LYS	2.1
1	B	27	LEU	2.1
1	A	280	ILE	2.1
1	B	104	GLY	2.1
1	B	208	GLY	2.1
1	A	24	VAL	2.1
1	B	150	PHE	2.1
1	B	285	TYR	2.0
1	A	47	ILE	2.0
1	C	173	LEU	2.0
1	A	82	LYS	2.0
1	B	16	ALA	2.0
1	B	181	ILE	2.0

6.2 Non-standard residues in protein, DNA, RNA chains ⓘ

There are no non-standard protein/DNA/RNA residues in this entry.

6.3 Carbohydrates [i](#)

There are no carbohydrates in this entry.

6.4 Ligands [i](#)

In the following table, the Atoms column lists the number of modelled atoms in the group and the number defined in the chemical component dictionary. LLDF column lists the quality of electron density of the group with respect to its neighbouring residues in protein, DNA or RNA chains. The B-factors column lists the minimum, median, 95th percentile and maximum values of B factors of atoms in the group. The column labelled 'Q< 0.9' lists the number of atoms with occupancy less than 0.9.

Mol	Type	Chain	Res	Atoms	RSCC	RSR	LLDF	B-factors(Å ²)	Q<0.9
2	ILE	B	500	9/9	0.46	0.55	5.56	78,80,81,83	0
2	ILE	D	500	9/9	0.67	0.32	3.88	69,71,71,71	0
2	ILE	A	500	9/9	0.75	0.27	2.99	63,65,67,69	0
2	ILE	C	500	9/9	0.63	0.24	1.90	56,59,61,61	0
4	AGS	D	400	31/31	0.77	0.18	0.23	55,69,91,92	0
3	ADP	C	400	27/27	0.89	0.14	-0.07	34,49,67,68	0
3	ADP	A	400	27/27	0.87	0.14	-0.24	42,62,76,77	0
4	AGS	B	400	31/31	0.82	0.17	-0.56	72,83,104,105	0
5	MG	B	600	1/1	0.39	0.29	-	87,87,87,87	0

6.5 Other polymers [i](#)

There are no such residues in this entry.