



# Full wwPDB X-ray Structure Validation Report ⓘ

Jan 16, 2018 – 08:38 PM EST

PDB ID : 4H7O  
Title : Crystal structure of Serine acetyltransferase from *Vibrio cholerae* O1 biovar El Tor N16961  
Authors : Tarique, K.F.; Abdul Rehman, S.A.; Gourinath, S.  
Deposited on : 2012-09-20  
Resolution : 2.17 Å(reported)

This is a Full wwPDB X-ray Structure Validation Report for a publicly released PDB entry.

We welcome your comments at [validation@mail.wwpdb.org](mailto:validation@mail.wwpdb.org)

A user guide is available at

<http://wwpdb.org/validation/2016/XrayValidationReportHelp>

with specific help available everywhere you see the ⓘ symbol.

---

The following versions of software and data (see [references ⓘ](#)) were used in the production of this report:

MolProbity : 4.02b-467  
Mogul : 1.7.2 (RC1), CSD as538be (2017)  
Xtriage (Phenix) : 1.9-1692  
EDS : rb-20030736  
Percentile statistics : 20161228.v01 (using entries in the PDB archive December 28th 2016)  
Refmac : 5.8.0135  
CCP4 : 6.5.0  
Ideal geometry (proteins) : Engh & Huber (2001)  
Ideal geometry (DNA, RNA) : Parkinson et al. (1996)  
Validation Pipeline (wwPDB-VP) : rb-20030736

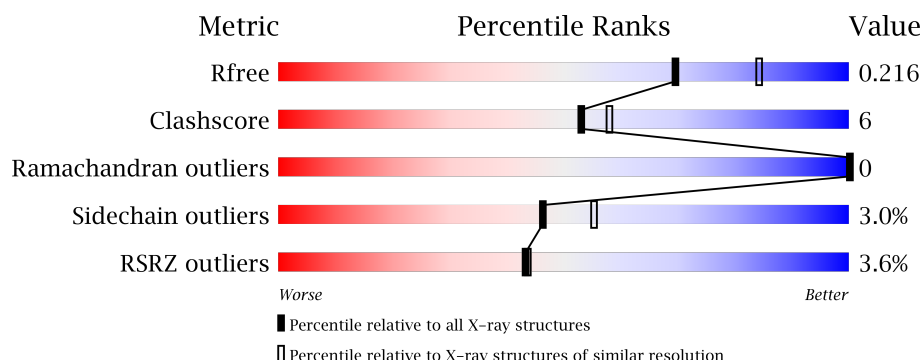
# 1 Overall quality at a glance

The following experimental techniques were used to determine the structure:

## *X-RAY DIFFRACTION*

The reported resolution of this entry is 2.17 Å.

Percentile scores (ranging between 0-100) for global validation metrics of the entry are shown in the following graphic. The table shows the number of entries on which the scores are based.



Metric	Whole archive (#Entries)	Similar resolution (#Entries, resolution range(Å))
$R_{free}$	100719	5526 (2.20-2.16)
Clashscore	112137	6386 (2.20-2.16)
Ramachandran outliers	110173	6282 (2.20-2.16)
Sidechain outliers	110143	6282 (2.20-2.16)
RSRZ outliers	101464	5562 (2.20-2.16)

The table below summarises the geometric issues observed across the polymeric chains and their fit to the electron density. The red, orange, yellow and green segments on the lower bar indicate the fraction of residues that contain outliers for  $\geq 3$ , 2, 1 and 0 types of geometric quality criteria. A grey segment represents the fraction of residues that are not modelled. The numeric value for each fraction is indicated below the corresponding segment, with a dot representing fractions  $\leq 5\%$ . The upper red bar (where present) indicates the fraction of residues that have poor fit to the electron density. The numeric value is given above the bar.

Mol	Chain	Length	Quality of chain
1	A	281	<div> <div>4%</div> <div>84%</div> <div>7%</div> <div>8%</div> </div>
1	B	281	<div> <div>2%</div> <div>77%</div> <div>15%</div> <div>8%</div> </div>
1	C	281	<div> <div>4%</div> <div>79%</div> <div>12%</div> <div>8%</div> </div>

The following table lists non-polymeric compounds, carbohydrate monomers and non-standard residues in protein, DNA, RNA chains that are outliers for geometric or electron-density-fit criteria:

Mol	Type	Chain	Res	Chirality	Geometry	Clashes	Electron density
3	ARG	A	302	-	-	X	X
3	ARG	B	301	-	-	-	X
3	ARG	C	301	-	-	-	X

## 2 Entry composition

There are 5 unique types of molecules in this entry. The entry contains 6156 atoms, of which 0 are hydrogens and 0 are deuteriums.

In the tables below, the ZeroOcc column contains the number of atoms modelled with zero occupancy, the AltConf column contains the number of residues with at least one atom in alternate conformation and the Trace column contains the number of residues modelled with at most 2 atoms.

- Molecule 1 is a protein called Serine acetyltransferase.

Mol	Chain	Residues	Atoms					ZeroOcc	AltConf	Trace
1	A	258	Total	C	N	O	S	0	0	0
			1939	1216	346	365	12			
1	B	258	Total	C	N	O	S	0	0	0
			1939	1216	346	365	12			
1	C	258	Total	C	N	O	S	0	0	0
			1939	1216	346	365	12			

There are 24 discrepancies between the modelled and reference sequences:

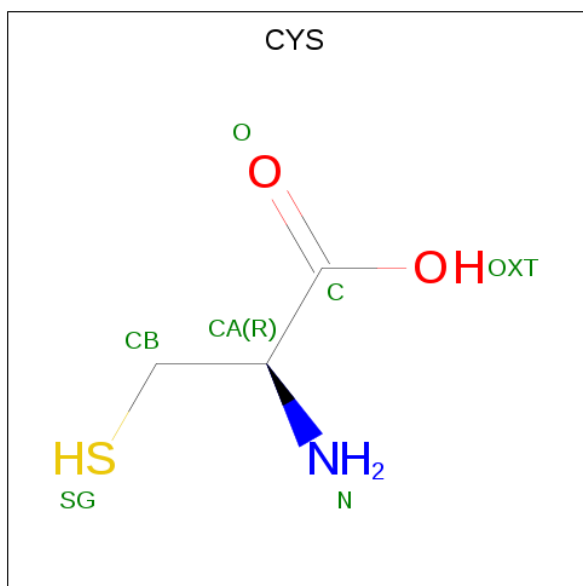
Chain	Residue	Modelled	Actual	Comment	Reference
A	274	LEU	-	EXPRESSION TAG	UNP Q9KNT2
A	275	GLU	-	EXPRESSION TAG	UNP Q9KNT2
A	276	HIS	-	EXPRESSION TAG	UNP Q9KNT2
A	277	HIS	-	EXPRESSION TAG	UNP Q9KNT2
A	278	HIS	-	EXPRESSION TAG	UNP Q9KNT2
A	279	HIS	-	EXPRESSION TAG	UNP Q9KNT2
A	280	HIS	-	EXPRESSION TAG	UNP Q9KNT2
A	281	HIS	-	EXPRESSION TAG	UNP Q9KNT2
B	274	LEU	-	EXPRESSION TAG	UNP Q9KNT2
B	275	GLU	-	EXPRESSION TAG	UNP Q9KNT2
B	276	HIS	-	EXPRESSION TAG	UNP Q9KNT2
B	277	HIS	-	EXPRESSION TAG	UNP Q9KNT2
B	278	HIS	-	EXPRESSION TAG	UNP Q9KNT2
B	279	HIS	-	EXPRESSION TAG	UNP Q9KNT2
B	280	HIS	-	EXPRESSION TAG	UNP Q9KNT2
B	281	HIS	-	EXPRESSION TAG	UNP Q9KNT2
C	274	LEU	-	EXPRESSION TAG	UNP Q9KNT2
C	275	GLU	-	EXPRESSION TAG	UNP Q9KNT2
C	276	HIS	-	EXPRESSION TAG	UNP Q9KNT2
C	277	HIS	-	EXPRESSION TAG	UNP Q9KNT2
C	278	HIS	-	EXPRESSION TAG	UNP Q9KNT2
C	279	HIS	-	EXPRESSION TAG	UNP Q9KNT2
C	280	HIS	-	EXPRESSION TAG	UNP Q9KNT2

*Continued on next page...*

Continued from previous page...

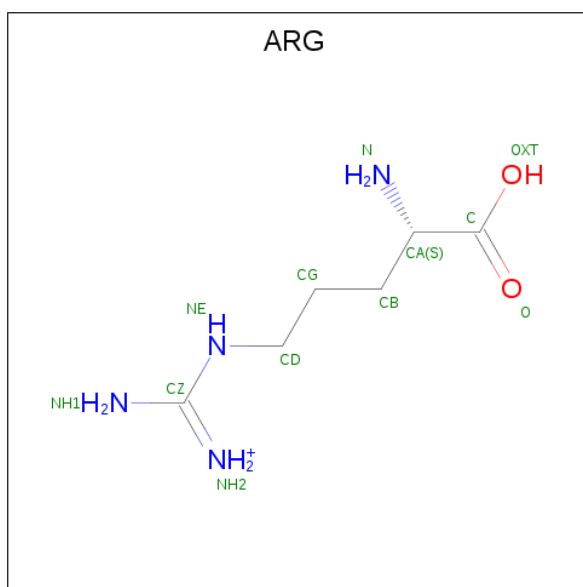
Chain	Residue	Modelled	Actual	Comment	Reference
C	281	HIS	-	EXPRESSION TAG	UNP Q9KNT2

- Molecule 2 is CYSTEINE (three-letter code: CYS) (formula:  $C_3H_7NO_2S$ ).



Mol	Chain	Residues	Atoms					ZeroOcc	AltConf
2	A	1	Total	C	N	O	S	0	0
			7	3	1	2	1		
2	A	1	Total	C	N	O	S	0	0
			7	3	1	2	1		
2	B	1	Total	C	N	O	S	0	0
			7	3	1	2	1		

- Molecule 3 is ARGININE (three-letter code: ARG) (formula:  $C_6H_{15}N_4O_2$ ).



Mol	Chain	Residues	Atoms				ZeroOcc	AltConf
3	A	1	Total	C	N	O	0	0
			12	6	4	2		
3	B	1	Total	C	N	O	0	0
			12	6	4	2		
3	C	1	Total	C	N	O	0	0
			12	6	4	2		

- Molecule 4 is SODIUM ION (three-letter code: NA) (formula: Na).

Mol	Chain	Residues	Atoms		ZeroOcc	AltConf
4	C	1	Total	Na	0	0
			1	1		

- Molecule 5 is water.

Mol	Chain	Residues	Atoms		ZeroOcc	AltConf
5	A	93	Total	O	0	0
			93	93		
5	B	96	Total	O	0	0
			96	96		
5	C	92	Total	O	0	0
			92	92		



- Molecule 1: Serine acetyltransferase



## 4 Data and refinement statistics

Property	Value	Source
Space group	C 1 2 1	Depositor
Cell constants a, b, c, $\alpha$ , $\beta$ , $\gamma$	144.04Å 75.04Å 73.43Å 90.00° 89.04° 90.00°	Depositor
Resolution (Å)	37.52 – 2.17 37.52 – 2.17	Depositor EDS
% Data completeness (in resolution range)	97.3 (37.52-2.17) 97.3 (37.52-2.17)	Depositor EDS
$R_{merge}$	0.10	Depositor
$R_{sym}$	(Not available)	Depositor
$\langle I/\sigma(I) \rangle$ <sup>1</sup>	5.84 (at 2.18Å)	Xtriage
Refinement program	REFMAC 5.6.0117	Depositor
R, $R_{free}$	0.177 , 0.220 0.174 , 0.216	Depositor DCC
$R_{free}$ test set	2026 reflections (5.28%)	DCC
Wilson B-factor (Å <sup>2</sup> )	26.4	Xtriage
Anisotropy	0.079	Xtriage
Bulk solvent $k_{sol}$ (e/Å <sup>3</sup> ), $B_{sol}$ (Å <sup>2</sup> )	0.39 , 45.5	EDS
L-test for twinning <sup>2</sup>	$\langle  L  \rangle = 0.50$ , $\langle L^2 \rangle = 0.33$	Xtriage
Estimated twinning fraction	0.006 for -h,-k,l	Xtriage
$F_o, F_c$ correlation	0.95	EDS
Total number of atoms	6156	wwPDB-VP
Average B, all atoms (Å <sup>2</sup> )	29.0	wwPDB-VP

Xtriage's analysis on translational NCS is as follows: *The largest off-origin peak in the Patterson function is 5.09% of the height of the origin peak. No significant pseudotranslation is detected.*

<sup>1</sup>Intensities estimated from amplitudes.

<sup>2</sup>Theoretical values of  $\langle |L| \rangle$ ,  $\langle L^2 \rangle$  for acentric reflections are 0.5, 0.333 respectively for untwinned datasets, and 0.375, 0.2 for perfectly twinned datasets.



## 5 Model quality

### 5.1 Standard geometry

Bond lengths and bond angles in the following residue types are not validated in this section: NA

The Z score for a bond length (or angle) is the number of standard deviations the observed value is removed from the expected value. A bond length (or angle) with  $|Z| > 5$  is considered an outlier worth inspection. RMSZ is the root-mean-square of all Z scores of the bond lengths (or angles).

Mol	Chain	Bond lengths		Bond angles	
		RMSZ	$\# Z  > 5$	RMSZ	$\# Z  > 5$
1	A	0.61	2/1975 (0.1%)	0.66	0/2682
1	B	0.60	2/1975 (0.1%)	0.66	0/2682
1	C	0.60	1/1975 (0.1%)	0.70	0/2682
All	All	0.60	5/5925 (0.1%)	0.67	0/8046

Chiral center outliers are detected by calculating the chiral volume of a chiral center and verifying if the center is modelled as a planar moiety or with the opposite hand. A planarity outlier is detected by checking planarity of atoms in a peptide group, atoms in a mainchain group or atoms of a sidechain that are expected to be planar.

Mol	Chain	#Chirality outliers	#Planarity outliers
1	A	0	1

All (5) bond length outliers are listed below:

Mol	Chain	Res	Type	Atoms	Z	Observed(Å)	Ideal(Å)
1	B	119	TRP	CD2-CE2	6.31	1.49	1.41
1	A	121	TRP	CD2-CE2	5.95	1.48	1.41
1	C	119	TRP	CD2-CE2	5.76	1.48	1.41
1	A	119	TRP	CD2-CE2	5.64	1.48	1.41
1	B	121	TRP	CD2-CE2	5.09	1.47	1.41

There are no bond angle outliers.

There are no chirality outliers.

All (1) planarity outliers are listed below:

Mol	Chain	Res	Type	Group
1	A	260	PHE	Peptide

## 5.2 Too-close contacts ⓘ

In the following table, the Non-H and H(model) columns list the number of non-hydrogen atoms and hydrogen atoms in the chain respectively. The H(added) column lists the number of hydrogen atoms added and optimized by MolProbity. The Clashes column lists the number of clashes within the asymmetric unit, whereas Symm-Clashes lists symmetry related clashes.

Mol	Chain	Non-H	H(model)	H(added)	Clashes	Symm-Clashes
1	A	1939	0	1941	20	0
1	B	1939	0	1941	32	0
1	C	1939	0	1941	23	0
2	A	14	0	8	0	0
2	B	7	0	4	0	0
3	A	12	0	12	7	0
3	B	12	0	12	3	0
3	C	12	0	12	2	0
4	C	1	0	0	0	0
5	A	93	0	0	3	0
5	B	96	0	0	2	0
5	C	92	0	0	3	0
All	All	6156	0	5871	73	0

The all-atom clashscore is defined as the number of clashes found per 1000 atoms (including hydrogen atoms). The all-atom clashscore for this structure is 6.

All (73) close contacts within the same asymmetric unit are listed below, sorted by their clash magnitude.

Atom-1	Atom-2	Interatomic distance (Å)	Clash overlap (Å)
1:A:55:THR:HB	3:A:302:ARG:CD	1.73	1.18
1:A:55:THR:HB	3:A:302:ARG:HD2	1.13	1.12
1:A:55:THR:CB	3:A:302:ARG:HD2	1.89	1.02
1:A:207:LYS:HD2	5:A:445:HOH:O	1.62	1.00
1:B:234:THR:HG21	1:B:243:ILE:HD12	1.46	0.98
1:C:207:LYS:HD2	5:C:421:HOH:O	1.67	0.93
1:C:233:HIS:O	1:C:246:ARG:HD3	1.70	0.91
3:A:302:ARG:HH21	3:A:302:ARG:HG3	1.33	0.90
1:B:260:PHE:HA	1:B:261:ASN:C	2.03	0.79
1:B:244:VAL:O	1:B:261:ASN:HB2	1.85	0.76
3:A:302:ARG:NH2	3:A:302:ARG:HG3	1.99	0.74
1:A:55:THR:HB	3:A:302:ARG:HD3	1.67	0.73
1:B:44:ALA:O	1:B:48:ILE:HD12	1.92	0.70
1:A:26:MET:HA	1:A:26:MET:CE	2.22	0.70
1:A:127:ALA:HB2	1:C:20:GLN:HE21	1.59	0.67

*Continued on next page...*

*Continued from previous page...*

Atom-1	Atom-2	Interatomic distance (Å)	Clash overlap (Å)
1:B:234:THR:CG2	1:B:243:ILE:HD12	2.21	0.67
1:B:19:GLU:O	1:B:23:GLN:HG2	1.95	0.66
1:A:34:THR:O	1:A:38:HIS:HD2	1.81	0.64
1:A:118:ASN:ND2	1:A:122:ARG:HE	1.96	0.64
1:C:34:THR:O	1:C:38:HIS:HD2	1.82	0.62
1:B:238:GLY:HA3	1:B:242:ARG:HH12	1.67	0.59
1:A:26:MET:HE3	1:A:26:MET:HA	1.83	0.59
1:B:118:ASN:ND2	1:B:122:ARG:HE	2.02	0.56
1:B:34:THR:O	1:B:38:HIS:HD2	1.88	0.56
1:A:137:SER:O	1:A:141:GLN:HA	2.06	0.55
1:B:20:GLN:HE21	1:C:127:ALA:HB2	1.71	0.54
3:A:302:ARG:CG	3:A:302:ARG:NH2	2.65	0.54
1:B:191:ASP:OD1	1:B:195:LYS:NZ	2.35	0.54
1:A:216:GLU:HG2	1:A:232:PRO:HB3	1.90	0.54
1:C:57:SER:OG	3:C:301:ARG:NH1	2.41	0.54
1:B:58:MET:HE1	1:B:132:PHE:HE1	1.74	0.52
1:B:55:THR:HB	3:B:301:ARG:HH21	1.75	0.52
1:B:260:PHE:CA	1:B:261:ASN:C	2.78	0.50
1:A:127:ALA:HB2	1:C:20:GLN:NE2	2.26	0.50
1:B:57:SER:H	3:B:301:ARG:HH22	1.59	0.50
1:C:248:GLN:H	1:C:248:GLN:CD	2.14	0.50
1:C:243:ILE:HG12	5:C:449:HOH:O	2.12	0.49
1:B:236:VAL:HG12	1:B:243:ILE:HD13	1.94	0.49
1:B:58:MET:CE	1:B:132:PHE:HE1	2.25	0.49
1:B:58:MET:HE1	1:B:132:PHE:CE1	2.47	0.49
1:A:118:ASN:HD21	1:A:122:ARG:HE	1.62	0.48
1:B:243:ILE:HG12	5:B:443:HOH:O	2.13	0.47
1:B:149:ARG:NH2	5:B:474:HOH:O	2.46	0.47
1:C:118:ASN:ND2	1:C:122:ARG:HE	2.12	0.47
1:C:236:VAL:HG12	1:C:243:ILE:HD13	1.97	0.47
1:A:231:PRO:O	1:A:234:THR:HB	2.16	0.46
1:B:260:PHE:HA	1:B:262:GLY:N	2.28	0.46
1:C:198:GLU:O	1:C:216:GLU:HG3	2.15	0.46
1:B:93:PRO:HD3	1:C:187:LYS:HA	1.98	0.46
1:C:173:ASP:OD2	1:C:251:LYS:NZ	2.49	0.45
1:B:52:ARG:NE	1:B:52:ARG:HA	2.32	0.45
1:C:84:ASP:O	1:C:88:THR:HG23	2.17	0.45
1:A:119:TRP:O	1:A:123:GLN:HG2	2.17	0.45
1:A:26:MET:HA	1:A:26:MET:HE2	1.96	0.45
1:C:165:GLY:HA3	1:C:193:HIS:CD2	2.52	0.44
1:C:32:HIS:CE1	1:C:37:LYS:HG3	2.52	0.44

*Continued on next page...*

*Continued from previous page...*

Atom-1	Atom-2	Interatomic distance (Å)	Clash overlap (Å)
1:B:197:ARG:NE	1:B:213:GLU:OE1	2.25	0.44
1:C:184:GLY:HA2	1:C:192:ARG:O	2.17	0.44
1:B:224:SER:OG	1:B:237:ALA:HA	2.18	0.44
1:C:34:THR:O	1:C:38:HIS:CD2	2.68	0.44
1:B:260:PHE:HB2	1:B:261:ASN:HA	1.99	0.43
1:B:137:SER:O	1:B:141:GLN:HA	2.19	0.42
1:B:57:SER:H	3:B:301:ARG:NH2	2.16	0.42
1:B:34:THR:HB	1:B:48:ILE:HD11	2.02	0.42
1:A:141:GLN:HG2	1:C:141:GLN:HG2	2.00	0.42
1:B:92:ASP:HA	1:B:93:PRO:HD2	1.82	0.42
1:C:262:GLY:HA3	5:C:482:HOH:O	2.19	0.41
1:B:119:TRP:O	1:B:123:GLN:HG2	2.20	0.41
1:C:119:TRP:O	1:C:123:GLN:HG2	2.20	0.41
1:A:259:GLN:NE2	5:A:490:HOH:O	2.53	0.41
1:B:184:GLY:HA2	1:B:192:ARG:O	2.21	0.40
1:C:55:THR:HG21	3:C:301:ARG:HG2	2.03	0.40
1:A:42:LYS:HG3	5:A:491:HOH:O	2.22	0.40

There are no symmetry-related clashes.

## 5.3 Torsion angles ⓘ

### 5.3.1 Protein backbone ⓘ

In the following table, the Percentiles column shows the percent Ramachandran outliers of the chain as a percentile score with respect to all X-ray entries followed by that with respect to entries of similar resolution.

The Analysed column shows the number of residues for which the backbone conformation was analysed, and the total number of residues.

Mol	Chain	Analysed	Favoured	Allowed	Outliers	Percentiles	
1	A	256/281 (91%)	250 (98%)	6 (2%)	0	100	100
1	B	256/281 (91%)	250 (98%)	6 (2%)	0	100	100
1	C	256/281 (91%)	251 (98%)	5 (2%)	0	100	100
All	All	768/843 (91%)	751 (98%)	17 (2%)	0	100	100

There are no Ramachandran outliers to report.

### 5.3.2 Protein sidechains ⓘ

In the following table, the Percentiles column shows the percent sidechain outliers of the chain as a percentile score with respect to all X-ray entries followed by that with respect to entries of similar resolution.

The Analysed column shows the number of residues for which the sidechain conformation was analysed, and the total number of residues.

Mol	Chain	Analysed	Rotameric	Outliers	Percentiles	
1	A	201/221 (91%)	197 (98%)	4 (2%)	60	72
1	B	201/221 (91%)	196 (98%)	5 (2%)	53	63
1	C	201/221 (91%)	194 (96%)	7 (4%)	41	48
All	All	603/663 (91%)	587 (97%)	16 (3%)	46	60

All (16) residues with a non-rotameric sidechain are listed below:

Mol	Chain	Res	Type
1	A	23	GLN
1	A	26	MET
1	A	114	TYR
1	A	259	GLN
1	B	6	HIS
1	B	19	GLU
1	B	37	LYS
1	B	78	SER
1	B	177	LEU
1	C	23	GLN
1	C	76	SER
1	C	78	SER
1	C	88	THR
1	C	177	LEU
1	C	179	ASP
1	C	191	ASP

Some sidechains can be flipped to improve hydrogen bonding and reduce clashes. All (15) such sidechains are listed below:

Mol	Chain	Res	Type
1	A	38	HIS
1	A	118	ASN
1	A	135	GLN
1	A	259	GLN
1	B	20	GLN

*Continued on next page...*

*Continued from previous page...*

Mol	Chain	Res	Type
1	B	32	HIS
1	B	38	HIS
1	B	118	ASN
1	B	135	GLN
1	C	20	GLN
1	C	38	HIS
1	C	118	ASN
1	C	134	ASN
1	C	135	GLN
1	C	228	GLN

### 5.3.3 RNA ⓘ

There are no RNA molecules in this entry.

## 5.4 Non-standard residues in protein, DNA, RNA chains ⓘ

There are no non-standard protein/DNA/RNA residues in this entry.

## 5.5 Carbohydrates ⓘ

There are no carbohydrates in this entry.

## 5.6 Ligand geometry ⓘ

Of 7 ligands modelled in this entry, 1 is monoatomic - leaving 6 for Mogul analysis.

In the following table, the Counts columns list the number of bonds (or angles) for which Mogul statistics could be retrieved, the number of bonds (or angles) that are observed in the model and the number of bonds (or angles) that are defined in the Chemical Component Dictionary. The Link column lists molecule types, if any, to which the group is linked. The Z score for a bond length (or angle) is the number of standard deviations the observed value is removed from the expected value. A bond length (or angle) with  $|Z| > 2$  is considered an outlier worth inspection. RMSZ is the root-mean-square of all Z scores of the bond lengths (or angles).

Mol	Type	Chain	Res	Link	Bond lengths			Bond angles		
					Counts	RMSZ	$\# Z  > 2$	Counts	RMSZ	$\# Z  > 2$
2	CYS	A	301	-	2,6,6	0.65	0	1,7,7	2.26	1 (100%)
3	ARG	A	302	-	6,11,11	0.70	0	5,13,13	1.04	0
2	CYS	A	303	-	2,6,6	0.65	0	1,7,7	0.09	0
3	ARG	B	301	-	6,11,11	0.55	0	5,13,13	0.44	0

Mol	Type	Chain	Res	Link	Bond lengths			Bond angles		
					Counts	RMSZ	# Z  > 2	Counts	RMSZ	# Z  > 2
2	CYS	B	302	-	2,6,6	0.74	0	1,7,7	0.57	0
3	ARG	C	301	-	6,11,11	0.66	0	5,13,13	0.38	0

In the following table, the Chirals column lists the number of chiral outliers, the number of chiral centers analysed, the number of these observed in the model and the number defined in the Chemical Component Dictionary. Similar counts are reported in the Torsion and Rings columns. '-' means no outliers of that kind were identified.

Mol	Type	Chain	Res	Link	Chirals	Torsions	Rings
2	CYS	A	301	-	-	0/2/6/6	0/0/0/0
3	ARG	A	302	-	-	0/7/11/11	0/0/0/0
2	CYS	A	303	-	-	0/2/6/6	0/0/0/0
3	ARG	B	301	-	-	0/7/11/11	0/0/0/0
2	CYS	B	302	-	-	0/2/6/6	0/0/0/0
3	ARG	C	301	-	-	0/7/11/11	0/0/0/0

There are no bond length outliers.

All (1) bond angle outliers are listed below:

Mol	Chain	Res	Type	Atoms	Z	Observed(°)	Ideal(°)
2	A	301	CYS	CA-CB-SG	-2.26	109.34	114.42

There are no chirality outliers.

There are no torsion outliers.

There are no ring outliers.

3 monomers are involved in 12 short contacts:

Mol	Chain	Res	Type	Clashes	Symm-Clashes
3	A	302	ARG	7	0
3	B	301	ARG	3	0
3	C	301	ARG	2	0

## 5.7 Other polymers [i](#)

There are no such residues in this entry.

## 5.8 Polymer linkage issues [i](#)

There are no chain breaks in this entry.

## 6 Fit of model and data ⓘ

### 6.1 Protein, DNA and RNA chains ⓘ

In the following table, the column labelled ‘#RSRZ> 2’ contains the number (and percentage) of RSRZ outliers, followed by percent RSRZ outliers for the chain as percentile scores relative to all X-ray entries and entries of similar resolution. The OWAB column contains the minimum, median, 95<sup>th</sup> percentile and maximum values of the occupancy-weighted average B-factor per residue. The column labelled ‘Q< 0.9’ lists the number of (and percentage) of residues with an average occupancy less than 0.9.

Mol	Chain	Analysed	<RSRZ>	#RSRZ>2	OWAB(Å <sup>2</sup> )	Q<0.9
1	A	258/281 (91%)	0.04	10 (3%) 40 40	18, 26, 43, 67	0
1	B	258/281 (91%)	0.02	7 (2%) 55 55	21, 28, 43, 75	0
1	C	258/281 (91%)	-0.03	11 (4%) 36 36	19, 26, 45, 78	0
All	All	774/843 (91%)	0.01	28 (3%) 43 44	18, 27, 44, 78	0

All (28) RSRZ outliers are listed below:

Mol	Chain	Res	Type	RSRZ
1	C	261	ASN	4.9
1	B	261	ASN	3.8
1	A	261	ASN	3.4
1	A	138	VAL	3.4
1	C	5	ALA	3.3
1	A	262	GLY	3.3
1	B	6	HIS	2.9
1	C	138	VAL	2.9
1	C	6	HIS	2.8
1	A	5	ALA	2.7
1	A	160	THR	2.7
1	C	243	ILE	2.5
1	A	180	VAL	2.5
1	A	162	ILE	2.5
1	B	161	GLY	2.4
1	A	11	GLN	2.4
1	B	262	GLY	2.4
1	B	162	ILE	2.4
1	C	242	ARG	2.4
1	C	140	CYS	2.3
1	C	246	ARG	2.2
1	A	139	ALA	2.2
1	B	163	VAL	2.2

*Continued on next page...*



*Continued from previous page...*

Mol	Chain	Res	Type	RSRZ
1	C	39	ASP	2.2
1	C	136	ILE	2.1
1	C	161	GLY	2.1
1	B	7	THR	2.1
1	A	142	VAL	2.0

## 6.2 Non-standard residues in protein, DNA, RNA chains [i](#)

There are no non-standard protein/DNA/RNA residues in this entry.

## 6.3 Carbohydrates [i](#)

There are no carbohydrates in this entry.

## 6.4 Ligands [i](#)

In the following table, the Atoms column lists the number of modelled atoms in the group and the number defined in the chemical component dictionary. LLDF column lists the quality of electron density of the group with respect to its neighbouring residues in protein, DNA or RNA chains. The B-factors column lists the minimum, median, 95<sup>th</sup> percentile and maximum values of B factors of atoms in the group. The column labelled 'Q < 0.9' lists the number of atoms with occupancy less than 0.9.

Mol	Type	Chain	Res	Atoms	RSCC	RSR	LLDF	B-factors(Å <sup>2</sup> )	Q<0.9
3	ARG	C	301	12/12	0.85	0.26	7.25	28,38,52,57	0
3	ARG	B	301	12/12	0.88	0.26	3.61	26,40,46,50	0
3	ARG	A	302	12/12	0.88	0.27	2.23	32,45,52,53	0
2	CYS	A	303	7/7	0.98	0.08	-0.79	21,24,25,27	0
2	CYS	B	302	7/7	0.97	0.07	-0.91	22,23,25,25	0
2	CYS	A	301	7/7	0.98	0.08	-1.15	20,20,21,23	0
4	NA	C	302	1/1	0.96	0.04	-3.34	29,29,29,29	0

## 6.5 Other polymers [i](#)

There are no such residues in this entry.