



Full wwPDB X-ray Structure Validation Report ⓘ

Jul 19, 2017 – 02:07 PM EDT

PDB ID : 4HB4
Title : Crystal structure of CRM1 inhibitor Leptomycin B in complex with CRM1(537DLTVK541/GLCEQ)-Ran-RanBP1
Authors : Sun, Q.; Chook, Y.M.
Deposited on : unknown
Resolution : 2.05 Å(reported)

This is a Full wwPDB X-ray Structure Validation Report for a publicly released PDB entry.

We welcome your comments at validation@mail.wwpdb.org

A user guide is available at

<http://wwpdb.org/validation/2016/XrayValidationReportHelp>

with specific help available everywhere you see the ⓘ symbol.

The following versions of software and data (see [references ⓘ](#)) were used in the production of this report:

MolProbity : 4.02b-467
Mogul : 1.7.2 (RC1), CSD as538be (2017)
Xtriage (Phenix) : 1.9-1692
EDS : rb-20029824
Percentile statistics : 20161228.v01 (using entries in the PDB archive December 28th 2016)
Refmac : 5.8.0135
CCP4 : 6.5.0
Ideal geometry (proteins) : Engh & Huber (2001)
Ideal geometry (DNA, RNA) : Parkinson et al. (1996)
Validation Pipeline (wwPDB-VP) : rb-20029824

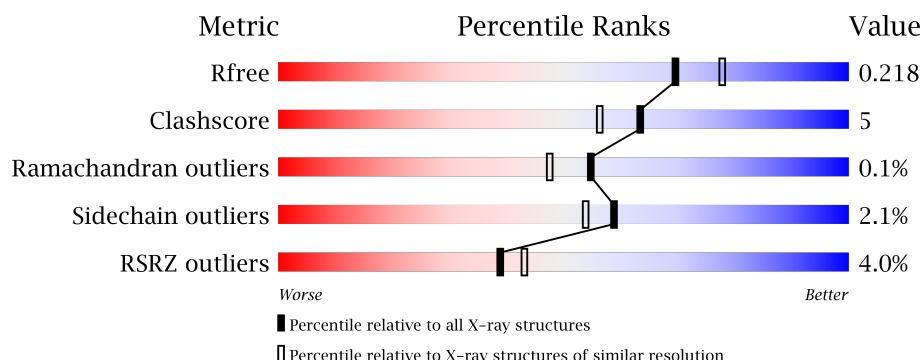
1 Overall quality at a glance

The following experimental techniques were used to determine the structure:

X-RAY DIFFRACTION

The reported resolution of this entry is 2.05 Å.

Percentile scores (ranging between 0-100) for global validation metrics of the entry are shown in the following graphic. The table shows the number of entries on which the scores are based.



Metric	Whole archive (#Entries)	Similar resolution (#Entries, resolution range(Å))
R_{free}	100719	1316 (2.04-2.04)
Clashscore	112137	1394 (2.04-2.04)
Ramachandran outliers	110173	1383 (2.04-2.04)
Sidechain outliers	110143	1383 (2.04-2.04)
RSRZ outliers	101464	1319 (2.04-2.04)

The table below summarises the geometric issues observed across the polymeric chains and their fit to the electron density. The red, orange, yellow and green segments on the lower bar indicate the fraction of residues that contain outliers for ≥ 3 , 2, 1 and 0 types of geometric quality criteria. A grey segment represents the fraction of residues that are not modelled. The numeric value for each fraction is indicated below the corresponding segment, with a dot representing fractions $\leq 5\%$. The upper red bar (where present) indicates the fraction of residues that have poor fit to the electron density. The numeric value is given above the bar.

Mol	Chain	Length	Quality of chain
1	A	216	<div> <div>8%</div> <div> <div></div> <div>87%</div> <div>10%</div> <div>•</div> </div> </div>
2	B	140	<div> <div>5%</div> <div> <div></div> <div>77%</div> <div>9%</div> <div>•</div> <div>14%</div> </div> </div>
3	C	1023	<div> <div>3%</div> <div> <div></div> <div>87%</div> <div>11%</div> <div>••</div> </div> </div>

The following table lists non-polymeric compounds, carbohydrate monomers and non-standard residues in protein, DNA, RNA chains that are outliers for geometric or electron-density-fit criteria:

Mol	Type	Chain	Res	Chirality	Geometry	Clashes	Electron density
6	EDO	A	303	-	-	-	X
7	LMB	C	1101	-	-	-	X
9	CL	C	1105	-	-	-	X

2 Entry composition

There are 10 unique types of molecules in this entry. The entry contains 12016 atoms, of which 0 are hydrogens and 0 are deuteriums.

In the tables below, the ZeroOcc column contains the number of atoms modelled with zero occupancy, the AltConf column contains the number of residues with at least one atom in alternate conformation and the Trace column contains the number of residues modelled with at most 2 atoms.

- Molecule 1 is a protein called GTP-binding nuclear protein Ran.

Mol	Chain	Residues	Atoms					ZeroOcc	AltConf	Trace
1	A	209	Total	C	N	O	S	0	6	0
			1723	1113	294	309	7			

- Molecule 2 is a protein called Ran-specific GTPase-activating protein 1.

Mol	Chain	Residues	Atoms					ZeroOcc	AltConf	Trace
2	B	121	Total	C	N	O	S	0	1	0
			1005	636	176	189	4			

There is a discrepancy between the modelled and reference sequences:

Chain	Residue	Modelled	Actual	Comment	Reference
B	98	LYS	ALA	CONFLICT	UNP P41920

- Molecule 3 is a protein called Exportin-1.

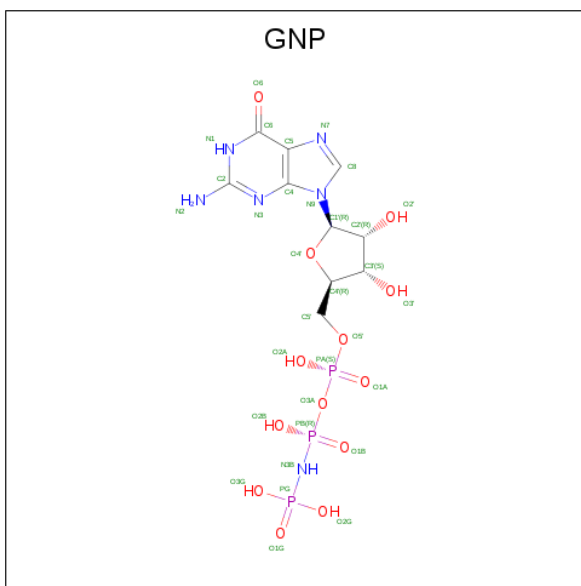
Mol	Chain	Residues	Atoms					ZeroOcc	AltConf	Trace
3	C	1017	Total	C	N	O	S	0	25	0
			8342	5373	1359	1567	43			

There are 7 discrepancies between the modelled and reference sequences:

Chain	Residue	Modelled	Actual	Comment	Reference
C	-1	GLY	-	EXPRESSION TAG	UNP P30822
C	0	ALA	-	EXPRESSION TAG	UNP P30822
C	537	GLY	ASP	ENGINEERED MUTATION	UNP P30822
C	539	CYS	THR	ENGINEERED MUTATION	UNP P30822
C	540	GLU	VAL	ENGINEERED MUTATION	UNP P30822
C	541	GLN	LYS	ENGINEERED MUTATION	UNP P30822
C	1022	CYS	TYR	ENGINEERED MUTATION	UNP P30822

- Molecule 4 is PHOSPHOAMINOPHOSPHONIC ACID-GUANYLATE ESTER (three-letter

code: GNP) (formula: C₁₀H₁₇N₆O₁₃P₃).

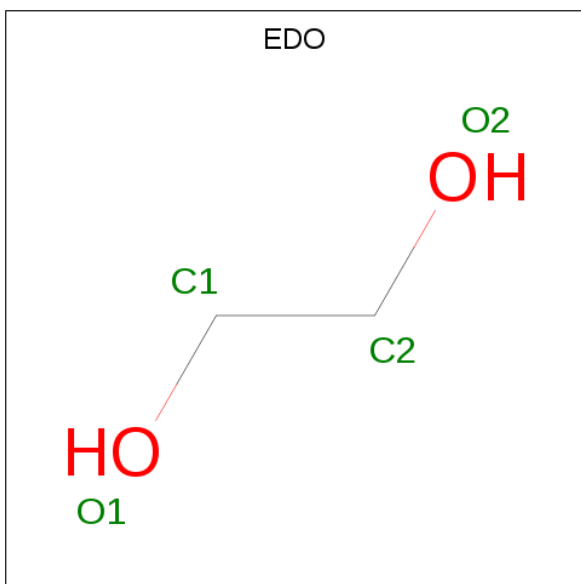


Mol	Chain	Residues	Atoms					ZeroOcc	AltConf
4	A	1	Total	C	N	O	P	0	0
			32	10	6	13	3		

- Molecule 5 is MAGNESIUM ION (three-letter code: MG) (formula: Mg).

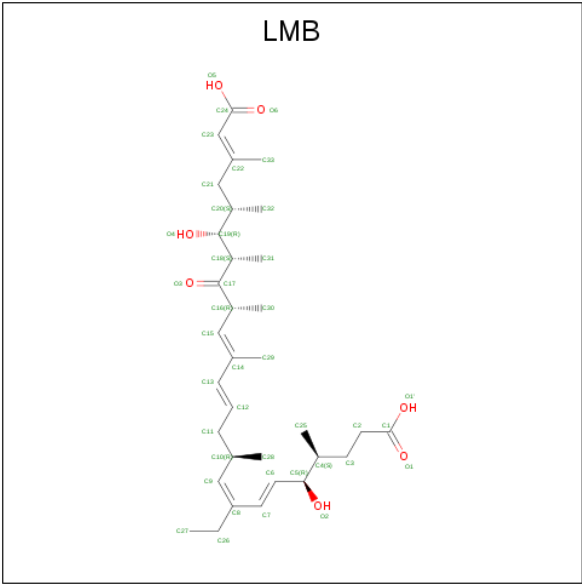
Mol	Chain	Residues	Atoms	ZeroOcc	AltConf
5	A	1	Total Mg 1 1	0	0

- Molecule 6 is 1,2-ETHANEDIOL (three-letter code: EDO) (formula: $\text{C}_2\text{H}_6\text{O}_2$).



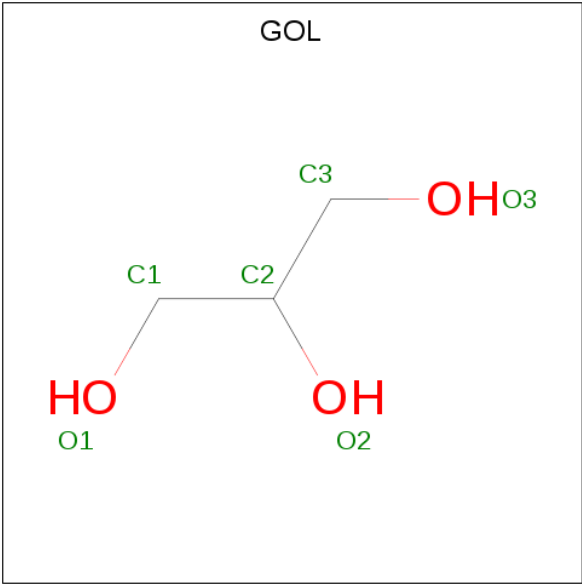
Mol	Chain	Residues	Atoms			ZeroOcc	AltConf
6	A	1	Total	C	O	0	0
			4	2	2		
6	C	1	Total	C	O	0	0
			4	2	2		

- Molecule 7 is Leptomycin B, bound form (three-letter code: LMB) (formula: C₃₃H₅₂O₇).



Mol	Chain	Residues	Atoms			ZeroOcc	AltConf
7	C	1	Total	C	O	0	0
			40	33	7		

- Molecule 8 is GLYCEROL (three-letter code: GOL) (formula: C₃H₈O₃).



Mol	Chain	Residues	Atoms			ZeroOcc	AltConf
8	C	1	Total	C	O	0	0
			6	3	3		

- Molecule 9 is CHLORIDE ION (three-letter code: CL) (formula: Cl).

Mol	Chain	Residues	Atoms		ZeroOcc	AltConf
9	C	4	Total	Cl	0	0
			4	4		

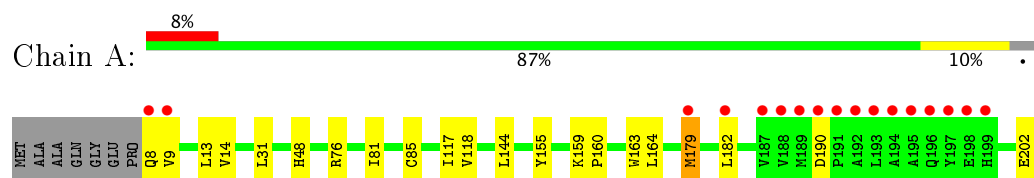
- Molecule 10 is water.

Mol	Chain	Residues	Atoms		ZeroOcc	AltConf
10	A	145	Total	O	0	0
			145	145		
10	B	40	Total	O	0	0
			40	40		
10	C	670	Total	O	0	0
			670	670		

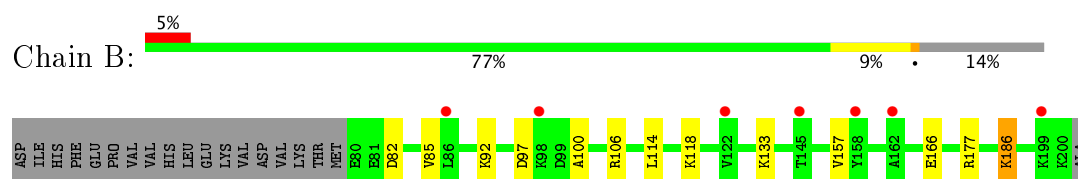
3 Residue-property plots [i](#)

These plots are drawn for all protein, RNA and DNA chains in the entry. The first graphic for a chain summarises the proportions of the various outlier classes displayed in the second graphic. The second graphic shows the sequence view annotated by issues in geometry and electron density. Residues are color-coded according to the number of geometric quality criteria for which they contain at least one outlier: green = 0, yellow = 1, orange = 2 and red = 3 or more. A red dot above a residue indicates a poor fit to the electron density ($RSRZ > 2$). Stretches of 2 or more consecutive residues without any outlier are shown as a green connector. Residues present in the sample, but not in the model, are shown in grey.

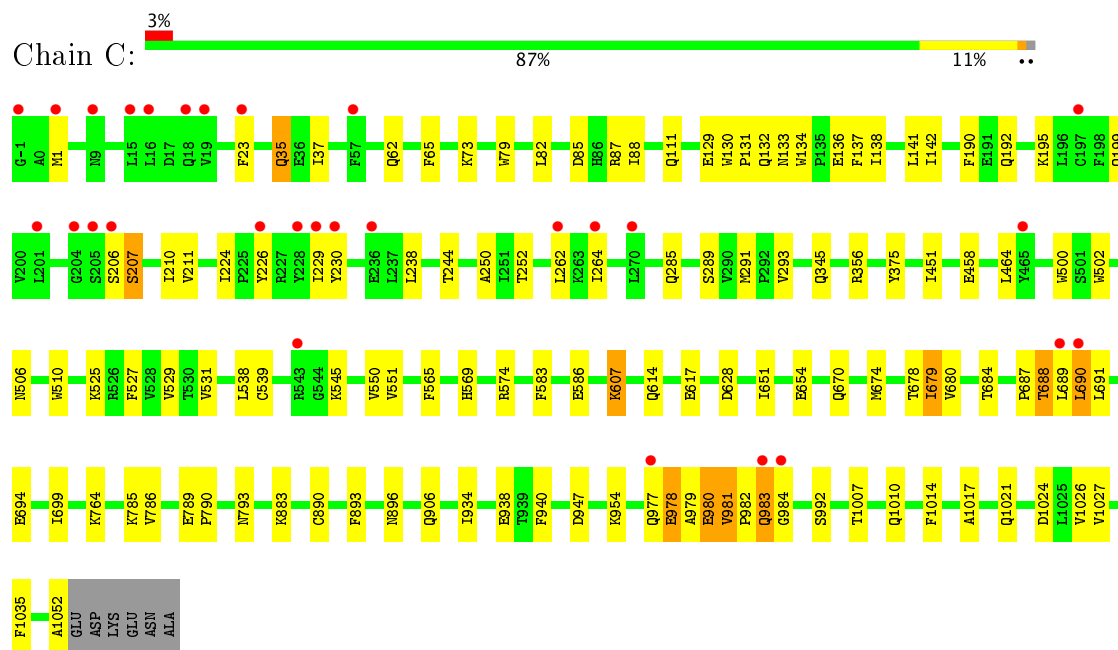
- Molecule 1: GTP-binding nuclear protein Ran



- Molecule 2: Ran-specific GTPase-activating protein 1



- Molecule 3: Exportin-1



GLOBAL-STATISTICS INFOmissingINFO

4 Model quality [i](#)

4.1 Standard geometry [i](#)

Bond lengths and bond angles in the following residue types are not validated in this section: GOL, GNP, CL, MG, EDO, LMB

The Z score for a bond length (or angle) is the number of standard deviations the observed value is removed from the expected value. A bond length (or angle) with $|Z| > 5$ is considered an outlier worth inspection. RMSZ is the root-mean-square of all Z scores of the bond lengths (or angles).

Mol	Chain	Bond lengths		Bond angles	
		RMSZ	$\# Z > 5$	RMSZ	$\# Z > 5$
1	A	0.58	0/1777	0.65	0/2406
2	B	0.53	0/1022	0.66	0/1363
3	C	0.57	1/8568 (0.0%)	0.62	0/11610
All	All	0.57	1/11367 (0.0%)	0.63	0/15379

All (1) bond length outliers are listed below:

Mol	Chain	Res	Type	Atoms	Z	Observed(Å)	Ideal(Å)
3	C	502	TRP	CD2-CE2	5.20	1.47	1.41

There are no bond angle outliers.

There are no chirality outliers.

There are no planarity outliers.

4.2 Too-close contacts [i](#)

In the following table, the Non-H and H(model) columns list the number of non-hydrogen atoms and hydrogen atoms in the chain respectively. The H(added) column lists the number of hydrogen atoms added and optimized by MolProbity. The Clashes column lists the number of clashes within the asymmetric unit, whereas Symm-Clashes lists symmetry related clashes.

Mol	Chain	Non-H	H(model)	H(added)	Clashes	Symm-Clashes
1	A	1723	0	1733	20	0
2	B	1005	0	1005	14	0
3	C	8342	0	8466	90	0
4	A	32	0	13	0	0
5	A	1	0	0	0	0
6	A	4	0	6	0	0
6	C	4	0	6	0	0

Continued on next page...

Continued from previous page...

Mol	Chain	Non-H	H(model)	H(added)	Clashes	Symm-Clashes
7	C	40	0	49	0	0
8	C	6	0	8	0	0
9	C	4	0	0	0	0
10	A	145	0	0	0	0
10	B	40	0	0	0	0
10	C	670	0	0	10	0
All	All	12016	0	11286	111	0

The all-atom clashscore is defined as the number of clashes found per 1000 atoms (including hydrogen atoms). The all-atom clashscore for this structure is 5.

All (111) close contacts within the same asymmetric unit are listed below, sorted by their clash magnitude.

Atom-1	Atom-2	Interatomic distance (Å)	Clash overlap (Å)
3:C:688:THR:HA	3:C:691:LEU:CD2	1.71	1.19
3:C:688:THR:CA	3:C:691:LEU:HD23	1.73	1.19
1:A:216:LEU:CD2	2:B:177:ARG:HE	1.68	1.06
3:C:688:THR:HA	3:C:691:LEU:HD23	1.07	1.05
1:A:216:LEU:HD22	2:B:177:ARG:HE	1.26	0.99
3:C:79:TRP:NE1	3:C:129:GLU:OE2	2.04	0.90
3:C:688:THR:C	3:C:691:LEU:HD23	1.96	0.86
3:C:688:THR:O	3:C:691:LEU:HB2	1.81	0.81
1:A:216:LEU:HD21	2:B:177:ARG:HE	1.49	0.76
3:C:679:ILE:HD12	3:C:699:ILE:HG13	1.68	0.74
3:C:674:MET:O	3:C:678:THR:HG23	1.88	0.73
3:C:688:THR:O	3:C:691:LEU:HD23	1.86	0.72
3:C:688:THR:CA	3:C:691:LEU:CD2	2.49	0.70
1:A:216:LEU:HD22	2:B:177:ARG:NE	2.05	0.68
3:C:688:THR:O	3:C:691:LEU:CD2	2.44	0.66
3:C:688:THR:C	3:C:691:LEU:CD2	2.67	0.63
3:C:1052:ALA:HB2	10:C:1762:HOH:O	2.01	0.61
3:C:977:GLN:O	3:C:980:GLU:HB2	2.01	0.61
3:C:375:TYR:CE2	10:C:1352:HOH:O	2.51	0.60
3:C:981:VAL:HG13	3:C:982:PRO:N	2.16	0.60
3:C:500:TRP:CZ3	3:C:538:LEU:HD11	2.39	0.58
3:C:978:GLU:OE1	3:C:978:GLU:HA	2.03	0.58
3:C:789[B]:GLU:HB2	3:C:790:PRO:HD3	1.85	0.58
3:C:680:VAL:O	3:C:684:THR:HG23	2.04	0.57
3:C:375:TYR:CD2	10:C:1352:HOH:O	2.57	0.56
3:C:226:TYR:HB3	10:C:1473:HOH:O	2.04	0.56
3:C:896:ASN:ND2	3:C:947:ASP:O	2.33	0.56

Continued on next page...

Continued from previous page...

Atom-1	Atom-2	Interatomic distance (Å)	Clash overlap (Å)
3:C:1052:ALA:CB	10:C:1762:HOH:O	2.53	0.56
3:C:451:ILE:HG13	3:C:550:VAL:HG23	1.87	0.55
3:C:978:GLU:O	3:C:979:ALA:HB3	2.07	0.55
3:C:679:ILE:HD12	3:C:699:ILE:CG1	2.34	0.54
3:C:690:LEU:HD13	3:C:690:LEU:O	2.08	0.54
3:C:983:GLN:HG3	3:C:984:GLY:N	2.22	0.54
3:C:690:LEU:HD21	3:C:699:ILE:CD1	2.38	0.54
3:C:244:THR:HG22	3:C:285:GLN:OE1	2.08	0.53
3:C:687:PRO:O	3:C:691:LEU:HD22	2.09	0.53
2:B:82:ASP:OD2	2:B:118:LYS:NZ	2.42	0.53
3:C:229:ILE:HG13	3:C:262:LEU:HD11	1.91	0.53
3:C:230:TYR:CE2	3:C:264:ILE:HD11	2.44	0.52
3:C:238:LEU:O	3:C:252:THR:HG21	2.10	0.52
3:C:244:THR:CG2	3:C:285:GLN:OE1	2.57	0.52
3:C:130:TRP:CD1	3:C:131:PRO:HA	2.45	0.52
1:A:216:LEU:HD23	2:B:92:LYS:HB3	1.92	0.51
3:C:134:TRP:CD1	3:C:137:PHE:HB2	2.45	0.51
3:C:85:ASP:HA	3:C:88:ILE:HD12	1.92	0.51
3:C:1017:ALA:O	3:C:1021:GLN:HG3	2.11	0.51
3:C:607:LYS:HG3	3:C:654:GLU:CG	2.41	0.51
1:A:13:LEU:HD23	1:A:13:LEU:C	2.31	0.51
1:A:179:MET:HE2	2:B:133:LYS:HG2	1.93	0.51
3:C:111:GLN:HA	3:C:111:GLN:OE1	2.11	0.50
3:C:688:THR:O	3:C:691:LEU:CB	2.57	0.50
3:C:981:VAL:CG1	3:C:982:PRO:N	2.75	0.49
3:C:293[A]:VAL:HG23	10:C:1323:HOH:O	2.12	0.49
1:A:216:LEU:HD21	2:B:177:ARG:NE	2.23	0.49
3:C:190:PHE:CZ	3:C:224:ILE:HG21	2.47	0.48
3:C:614:GLN:HB2	3:C:617:GLU:HG3	1.95	0.48
3:C:793:ASN:HB3	10:C:1671:HOH:O	2.13	0.48
3:C:285:GLN:O	3:C:289:SER:HB2	2.13	0.48
3:C:506:ASN:HB3	3:C:510:TRP:CZ2	2.48	0.48
3:C:525:LYS:O	3:C:529:VAL:HG23	2.14	0.48
3:C:141:LEU:HD23	3:C:141:LEU:C	2.34	0.47
3:C:82:LEU:O	3:C:87:ARG:NH1	2.47	0.47
1:A:13:LEU:HD23	1:A:14:VAL:N	2.29	0.47
3:C:207:SER:HB3	3:C:210:ILE:H	1.80	0.47
3:C:688:THR:HA	3:C:691:LEU:HD21	1.80	0.47
3:C:764:LYS:HD3	10:C:1405:HOH:O	2.14	0.47
3:C:525:LYS:NZ	3:C:569:HIS:HE1	2.12	0.46
3:C:690:LEU:HD21	3:C:699:ILE:HD13	1.96	0.46

Continued on next page...

Continued from previous page...

Atom-1	Atom-2	Interatomic distance (Å)	Clash overlap (Å)
1:A:81:ILE:HD13	3:C:62:GLN:HG3	1.98	0.46
3:C:527:PHE:O	3:C:531:VAL:HG23	2.15	0.46
3:C:670:GLN:O	3:C:674:MET:HG3	2.16	0.46
3:C:565:PHE:O	3:C:569:HIS:HD2	1.98	0.46
3:C:207:SER:O	3:C:211:VAL:HG23	2.16	0.45
3:C:132:GLN:HG2	3:C:133:ASN:N	2.31	0.45
1:A:179:MET:CE	2:B:133:LYS:HG2	2.46	0.45
3:C:983:GLN:HB2	3:C:983:GLN:HE21	1.56	0.45
1:A:159:LYS:HB2	1:A:160:PRO:HD3	2.00	0.44
3:C:1007:THR:H	3:C:1010:GLN:HE21	1.64	0.44
3:C:142:ILE:CD1	3:C:192[B]:GLN:HB3	2.48	0.44
3:C:250:ALA:HB3	10:C:1675:HOH:O	2.18	0.44
3:C:539:CYS:HB2	3:C:551:VAL:HG11	2.00	0.43
3:C:583:PHE:O	3:C:586:GLU:HB2	2.18	0.43
1:A:76[A]:ARG:NH2	3:C:73:LYS:HD3	2.34	0.43
3:C:651:ILE:O	3:C:654:GLU:HB2	2.18	0.43
1:A:216:LEU:CD2	2:B:177:ARG:NE	2.54	0.43
3:C:1024:ASP:OD1	3:C:1026:VAL:HG12	2.18	0.43
1:A:118:VAL:HG22	1:A:163:TRP:CE3	2.54	0.43
3:C:195:LYS:HG2	3:C:199:GLN:HE21	1.83	0.43
2:B:85:VAL:HG22	2:B:114:LEU:CD2	2.49	0.43
3:C:1021:GLN:CD	3:C:1027:VAL:HG12	2.39	0.43
2:B:106:ARG:NH2	2:B:166:GLU:HG2	2.34	0.42
3:C:136:GLU:OE1	3:C:136:GLU:HA	2.19	0.42
3:C:1014:PHE:CE1	3:C:1035:PHE:HB2	2.54	0.42
1:A:155:TYR:OH	3:C:458:GLU:OE2	2.25	0.42
3:C:785[A]:LYS:HD2	3:C:786:VAL:HG23	2.01	0.42
3:C:890:CYS:O	3:C:893:PHE:HB2	2.18	0.42
3:C:356:ARG:HD3	3:C:464:LEU:HD22	2.02	0.41
1:A:117:ILE:HB	1:A:144:LEU:HD22	2.02	0.41
1:A:31:LEU:HD11	1:A:48:HIS:CG	2.55	0.41
2:B:97:ASP:O	2:B:100:ALA:O	2.38	0.41
3:C:1:MET:HB3	3:C:37:ILE:HD13	2.02	0.41
3:C:23:PHE:CE1	3:C:35:GLN:HG2	2.55	0.41
3:C:906:GLN:HB2	3:C:954:LYS:HZ1	1.86	0.41
3:C:934:ILE:O	3:C:938:GLU:HG2	2.20	0.41
2:B:186:LYS:HA	2:B:186:LYS:HD3	1.90	0.41
1:A:85:CYS:HB2	1:A:164:LEU:HD22	2.04	0.40
3:C:138:ILE:HA	3:C:138:ILE:HD13	1.95	0.40
3:C:293[A]:VAL:HG11	3:C:345:GLN:HB3	2.03	0.40
1:A:81:ILE:HD11	3:C:65:PHE:CG	2.56	0.40

Continued on next page...

Continued from previous page...

Atom-1	Atom-2	Interatomic distance (Å)	Clash overlap (Å)
3:C:978:GLU:OE1	3:C:978:GLU:CA	2.69	0.40
3:C:574:ARG:HD2	10:C:1855:HOH:O	2.20	0.40

There are no symmetry-related clashes.

4.3 Torsion angles [i](#)

4.3.1 Protein backbone [i](#)

In the following table, the Percentiles column shows the percent Ramachandran outliers of the chain as a percentile score with respect to all X-ray entries followed by that with respect to entries of similar resolution.

The Analysed column shows the number of residues for which the backbone conformation was analysed, and the total number of residues.

Mol	Chain	Analysed	Favoured	Allowed	Outliers	Percentiles	
1	A	213/216 (99%)	206 (97%)	6 (3%)	1 (0%)	32	21
2	B	120/140 (86%)	114 (95%)	6 (5%)	0	100	100
3	C	1040/1023 (102%)	1023 (98%)	17 (2%)	0	100	100
All	All	1373/1379 (100%)	1343 (98%)	29 (2%)	1 (0%)	55	47

All (1) Ramachandran outliers are listed below:

Mol	Chain	Res	Type
1	A	9	VAL

4.3.2 Protein sidechains [i](#)

In the following table, the Percentiles column shows the percent sidechain outliers of the chain as a percentile score with respect to all X-ray entries followed by that with respect to entries of similar resolution.

The Analysed column shows the number of residues for which the sidechain conformation was analysed, and the total number of residues.

Mol	Chain	Analysed	Rotameric	Outliers	Percentiles	
1	A	187/185 (101%)	182 (97%)	5 (3%)	50	43
2	B	105/122 (86%)	103 (98%)	2 (2%)	62	58

Continued on next page...

Continued from previous page...

Mol	Chain	Analysed	Rotameric	Outliers	Percentiles	
3	C	951/932 (102%)	932 (98%)	19 (2%)	60	56
All	All	1243/1239 (100%)	1217 (98%)	26 (2%)	59	54

All (26) residues with a non-rotameric sidechain are listed below:

Mol	Chain	Res	Type
1	A	8	GLN
1	A	179	MET
1	A	182	LEU
1	A	190	ASP
1	A	202	GLU
2	B	157	VAL
2	B	186	LYS
3	C	35	GLN
3	C	206	SER
3	C	207	SER
3	C	291	MET
3	C	545	LYS
3	C	607	LYS
3	C	628	ASP
3	C	679	ILE
3	C	688	THR
3	C	689	LEU
3	C	690	LEU
3	C	694	GLU
3	C	883	LYS
3	C	940	PHE
3	C	978	GLU
3	C	980	GLU
3	C	981	VAL
3	C	983	GLN
3	C	992	SER

Some sidechains can be flipped to improve hydrogen bonding and reduce clashes. All (13) such sidechains are listed below:

Mol	Chain	Res	Type
1	A	48	HIS
1	A	62	ASN
3	C	30	GLN
3	C	56	GLN
3	C	84	ASN

Continued on next page...

Continued from previous page...

Mol	Chain	Res	Type
3	C	173	GLN
3	C	199	GLN
3	C	494	GLN
3	C	541	GLN
3	C	569	HIS
3	C	813	ASN
3	C	983	GLN
3	C	1010	GLN

4.3.3 RNA [i](#)

There are no RNA molecules in this entry.

4.4 Non-standard residues in protein, DNA, RNA chains [i](#)

There are no non-standard protein/DNA/RNA residues in this entry.

4.5 Carbohydrates [i](#)

There are no carbohydrates in this entry.

4.6 Ligand geometry [i](#)

Of 10 ligands modelled in this entry, 5 are monoatomic - leaving 5 for Mogul analysis.

In the following table, the Counts columns list the number of bonds (or angles) for which Mogul statistics could be retrieved, the number of bonds (or angles) that are observed in the model and the number of bonds (or angles) that are defined in the chemical component dictionary. The Link column lists molecule types, if any, to which the group is linked. The Z score for a bond length (or angle) is the number of standard deviations the observed value is removed from the expected value. A bond length (or angle) with $|Z| > 2$ is considered an outlier worth inspection. RMSZ is the root-mean-square of all Z scores of the bond lengths (or angles).

Mol	Type	Chain	Res	Link	Bond lengths			Bond angles		
					Counts	RMSZ	$\# Z > 2$	Counts	RMSZ	$\# Z > 2$
4	GNP	A	301	5	27,34,34	2.70	7 (25%)	26,54,54	1.13	2 (7%)
6	EDO	A	303	-	3,3,3	0.47	0	2,2,2	0.26	0
7	LMB	C	1101	3	30,39,39	0.90	2 (6%)	32,51,51	1.68	2 (6%)
8	GOL	C	1102	-	5,5,5	0.32	0	5,5,5	0.36	0
6	EDO	C	1103	-	3,3,3	0.55	0	2,2,2	0.11	0

In the following table, the Chirals column lists the number of chiral outliers, the number of chiral centers analysed, the number of these observed in the model and the number defined in the chemical component dictionary. Similar counts are reported in the Torsion and Rings columns. '-' means no outliers of that kind were identified.

Mol	Type	Chain	Res	Link	Chirals	Torsions	Rings
4	GNP	A	301	5	-	0/16/38/38	0/3/3/3
6	EDO	A	303	-	-	0/1/1/1	0/0/0/0
7	LMB	C	1101	3	-	0/50/54/54	0/0/0/0
8	GOL	C	1102	-	-	0/4/4/4	0/0/0/0
6	EDO	C	1103	-	-	0/1/1/1	0/0/0/0

All (9) bond length outliers are listed below:

Mol	Chain	Res	Type	Atoms	Z	Observed(Å)	Ideal(Å)
4	A	301	GNP	C4-N9	-11.17	1.32	1.47
4	A	301	GNP	C8-N9	-3.44	1.36	1.46
4	A	301	GNP	C5-C6	-3.06	1.47	1.53
7	C	1101	LMB	C16-C17	-2.48	1.50	1.52
4	A	301	GNP	C2-N1	-2.01	1.36	1.44
4	A	301	GNP	PG-O1G	2.35	1.48	1.46
7	C	1101	LMB	C7-C8	2.38	1.49	1.44
4	A	301	GNP	PB-N3B	3.36	1.72	1.63
4	A	301	GNP	PG-N3B	3.43	1.72	1.63

All (4) bond angle outliers are listed below:

Mol	Chain	Res	Type	Atoms	Z	Observed(°)	Ideal(°)
7	C	1101	LMB	C26-C8-C9	-7.17	116.98	126.28
4	A	301	GNP	O1G-PG-N3B	-3.44	106.65	111.79
7	C	1101	LMB	C11-C12-C13	-2.73	119.63	125.89
4	A	301	GNP	PA-O3A-PB	-2.71	122.80	132.38

There are no chirality outliers.

There are no torsion outliers.

There are no ring outliers.

No monomer is involved in short contacts.

4.7 Other polymers ⓘ

There are no such residues in this entry.

4.8 Polymer linkage issues ⓘ

There are no chain breaks in this entry.

5 Fit of model and data ⓘ

5.1 Protein, DNA and RNA chains ⓘ

In the following table, the column labelled ‘#RSRZ> 2’ contains the number (and percentage) of RSRZ outliers, followed by percent RSRZ outliers for the chain as percentile scores relative to all X-ray entries and entries of similar resolution. The OWAB column contains the minimum, median, 95th percentile and maximum values of the occupancy-weighted average B-factor per residue. The column labelled ‘Q< 0.9’ lists the number of (and percentage) of residues with an average occupancy less than 0.9.

Mol	Chain	Analysed	<RSRZ>	#RSRZ>2		OWAB(Å ²)	Q<0.9
1	A	209/216 (96%)	0.46	18 (8%)	11 12	19, 26, 61, 80	0
2	B	121/140 (86%)	0.34	7 (5%)	24 26	26, 35, 51, 71	0
3	C	1017/1023 (99%)	0.13	29 (2%)	52 58	15, 28, 52, 81	0
All	All	1347/1379 (97%)	0.20	54 (4%)	39 43	15, 29, 52, 81	0

All (54) RSRZ outliers are listed below:

Mol	Chain	Res	Type	RSRZ
1	A	193	LEU	6.9
1	A	191	PRO	6.2
3	C	689	LEU	4.9
3	C	19	VAL	4.5
3	C	-1	GLY	4.5
3	C	205	SER	4.5
1	A	192	ALA	4.4
1	A	195	ALA	4.4
3	C	690	LEU	4.3
3	C	262	LEU	4.2
1	A	187	VAL	4.2
3	C	229	ILE	4.1
3	C	264	ILE	4.1
1	A	8	GLN	3.8
1	A	189	MET	3.8
3	C	57	PHE	3.8
1	A	182	LEU	3.8
3	C	15	LEU	3.7
1	A	197[A]	TYR	3.7
1	A	188	VAL	3.7
2	B	122	VAL	3.5
1	A	216	LEU	3.4
3	C	16	LEU	3.4

Continued on next page...

Continued from previous page...

Mol	Chain	Res	Type	RSRZ
1	A	179	MET	3.3
1	A	9	VAL	3.2
3	C	18	GLN	3.0
2	B	199	LYS	2.9
3	C	983	GLN	2.8
3	C	204	GLY	2.8
3	C	1	MET	2.7
3	C	977	GLN	2.7
2	B	145	THR	2.7
1	A	196	GLN	2.7
3	C	206	SER	2.6
3	C	226	TYR	2.5
2	B	86	LEU	2.5
1	A	190	ASP	2.4
3	C	228	TYR	2.4
3	C	543	ARG	2.4
1	A	194	ALA	2.3
3	C	197[A]	CYS	2.3
2	B	158	TYR	2.3
3	C	236[A]	GLU	2.3
3	C	9	ASN	2.3
3	C	984	GLY	2.3
2	B	98	LYS	2.2
2	B	162	ALA	2.2
1	A	199	HIS	2.2
3	C	201	LEU	2.2
3	C	465[A]	TYR	2.2
3	C	270	LEU	2.1
3	C	230	TYR	2.1
3	C	23	PHE	2.1
1	A	198	GLU	2.0

5.2 Non-standard residues in protein, DNA, RNA chains ⓘ

There are no non-standard protein/DNA/RNA residues in this entry.

5.3 Carbohydrates ⓘ

There are no carbohydrates in this entry.

5.4 Ligands ⓘ

In the following table, the Atoms column lists the number of modelled atoms in the group and the number defined in the chemical component dictionary. LLDF column lists the quality of electron density of the group with respect to its neighbouring residues in protein, DNA or RNA chains. The B-factors column lists the minimum, median, 95th percentile and maximum values of B factors of atoms in the group. The column labelled 'Q< 0.9' lists the number of atoms with occupancy less than 0.9.

Mol	Type	Chain	Res	Atoms	RSCC	RSR	LLDF	B-factors(Å ²)	Q<0.9
6	EDO	A	303	4/4	0.93	0.44	12.21	62,63,65,65	0
9	CL	C	1105	1/1	0.95	0.24	10.41	64,64,64,64	0
7	LMB	C	1101	40/40	0.89	0.26	3.17	31,35,41,43	0
6	EDO	C	1103	4/4	0.81	0.17	0.75	73,74,75,75	0
9	CL	C	1106	1/1	0.94	0.14	-0.27	78,78,78,78	0
4	GNP	A	301	32/32	0.97	0.11	-0.41	22,23,25,25	0
9	CL	C	1104	1/1	0.94	0.11	-1.15	72,72,72,72	0
5	MG	A	302	1/1	0.94	0.05	-2.77	25,25,25,25	0
8	GOL	C	1102	6/6	0.90	0.20	-	60,63,64,66	0
9	CL	C	1107	1/1	0.82	0.07	-	92,92,92,92	0

5.5 Other polymers ⓘ

There are no such residues in this entry.