



Full wwPDB X-ray Structure Validation Report ⓘ

Feb 22, 2018 – 12:45 AM EST

PDB ID : 2HH1
Title : Reaction centre from Rhodobacter sphaeroides strain R-26.1 complexed with dibrominated phosphatidylcholine
Authors : Roszak, A.W.; Gardiner, A.T.; Isaacs, N.W.; Cogdell, R.J.
Deposited on : 2006-06-27
Resolution : 2.55 Å(reported)

This is a Full wwPDB X-ray Structure Validation Report for a publicly released PDB entry.

We welcome your comments at validation@mail.wwpdb.org

A user guide is available at

<http://wwpdb.org/validation/2016/XrayValidationReportHelp>

with specific help available everywhere you see the ⓘ symbol.

The following versions of software and data (see [references ⓘ](#)) were used in the production of this report:

MolProbity : 4.02b-467
Mogul : 1.7.2 (RC1), CSD as538be (2017)
Xtriage (Phenix) : 1.9-1692
EDS : rb-20030736
Percentile statistics : 20161228.v01 (using entries in the PDB archive December 28th 2016)
Refmac : 5.8.0135
CCP4 : 6.5.0
Ideal geometry (proteins) : Engh & Huber (2001)
Ideal geometry (DNA, RNA) : Parkinson et al. (1996)
Validation Pipeline (wwPDB-VP) : rb-20030736

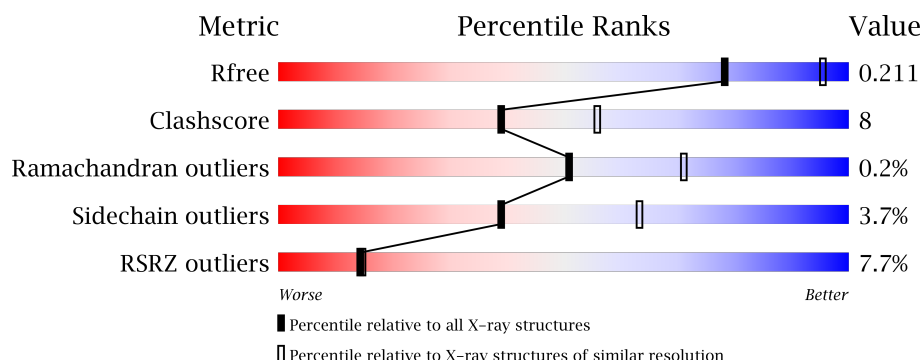
1 Overall quality at a glance ⓘ

The following experimental techniques were used to determine the structure:

X-RAY DIFFRACTION

The reported resolution of this entry is 2.55 Å.

Percentile scores (ranging between 0-100) for global validation metrics of the entry are shown in the following graphic. The table shows the number of entries on which the scores are based.



Metric	Whole archive (#Entries)	Similar resolution (#Entries, resolution range(Å))
R_{free}	100719	4993 (2.58-2.50)
Clashscore	112137	5755 (2.58-2.50)
Ramachandran outliers	110173	5652 (2.58-2.50)
Sidechain outliers	110143	5654 (2.58-2.50)
RSRZ outliers	101464	5026 (2.58-2.50)

The table below summarises the geometric issues observed across the polymeric chains and their fit to the electron density. The red, orange, yellow and green segments on the lower bar indicate the fraction of residues that contain outliers for ≥ 3 , 2, 1 and 0 types of geometric quality criteria. A grey segment represents the fraction of residues that are not modelled. The numeric value for each fraction is indicated below the corresponding segment, with a dot representing fractions $\leq 5\%$. The upper red bar (where present) indicates the fraction of residues that have poor fit to the electron density. The numeric value is given above the bar.

Mol	Chain	Length	Quality of chain
1	L	281	<div> <div>9%</div> <div>89%</div> <div>10%</div> <div>•</div> </div>
2	M	307	<div> <div>10%</div> <div>83%</div> <div>14%</div> <div>••</div> </div>
3	H	260	<div> <div>3%</div> <div>85%</div> <div>7%</div> <div>• 6%</div> </div>

The following table lists non-polymeric compounds, carbohydrate monomers and non-standard residues in protein, DNA, RNA chains that are outliers for geometric or electron-density-fit criteria:

Mol	Type	Chain	Res	Chirality	Geometry	Clashes	Electron density
11	CDL	M	800	-	-	-	X
14	PC7	H	801	-	-	-	X
15	GOL	H	705	-	-	-	X
15	GOL	H	706	-	-	-	X
15	GOL	H	708	-	-	-	X
4	PO4	L	703	-	-	-	X
7	U10	L	502	-	-	-	X
8	PC9	L	802	-	-	X	X
9	LDA	H	901	-	-	-	X
9	LDA	H	905	-	-	-	X
9	LDA	L	906	-	-	-	X
9	LDA	M	907	-	-	-	X
9	LDA	M	920	-	-	-	X

2 Entry composition [i](#)

There are 16 unique types of molecules in this entry. The entry contains 7923 atoms, of which 0 are hydrogens and 0 are deuteriums.

In the tables below, the ZeroOcc column contains the number of atoms modelled with zero occupancy, the AltConf column contains the number of residues with at least one atom in alternate conformation and the Trace column contains the number of residues modelled with at most 2 atoms.

- Molecule 1 is a protein called Reaction center protein L chain.

Mol	Chain	Residues	Atoms					ZeroOcc	AltConf	Trace
1	L	281	Total	C	N	O	S	0	2	0
			2234	1508	355	363	8			

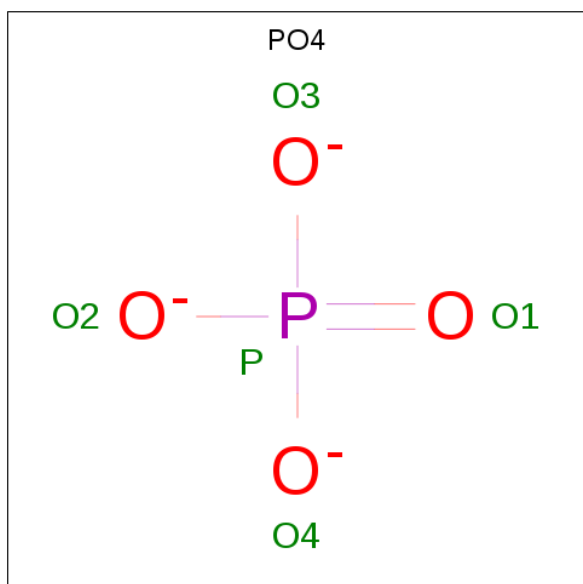
- Molecule 2 is a protein called Reaction center protein M chain.

Mol	Chain	Residues	Atoms					ZeroOcc	AltConf	Trace
2	M	302	Total	C	N	O	S	0	9	0
			2466	1643	403	409	11			

- Molecule 3 is a protein called Reaction center protein H chain.

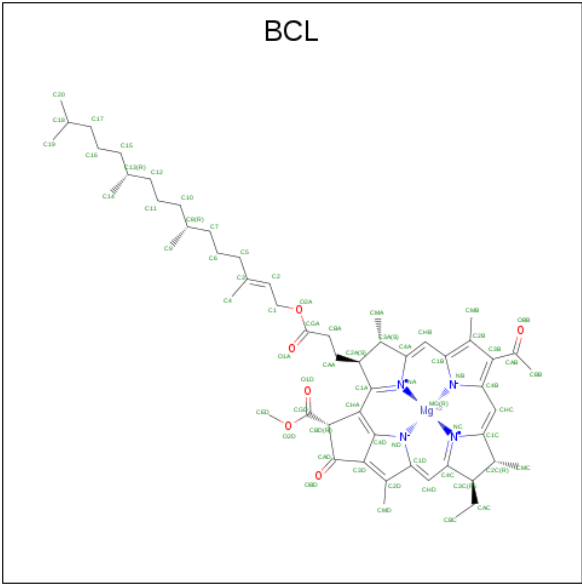
Mol	Chain	Residues	Atoms					ZeroOcc	AltConf	Trace
3	H	244	Total	C	N	O	S	0	9	0
			1891	1207	328	346	10			

- Molecule 4 is PHOSPHATE ION (three-letter code: PO4) (formula: O₄P).



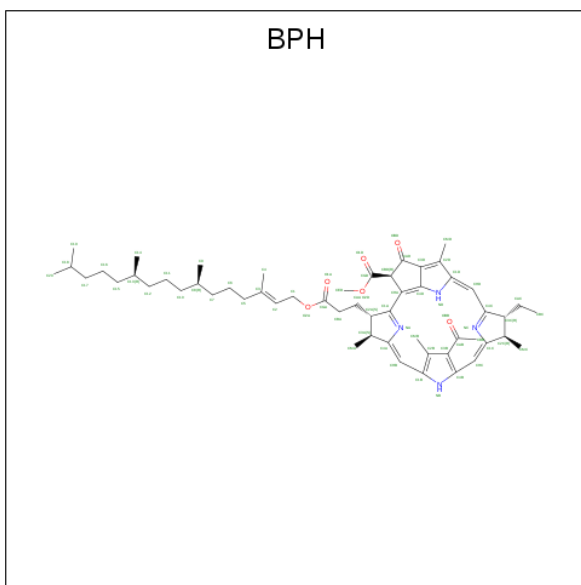
Mol	Chain	Residues	Atoms	ZeroOcc	AltConf
4	L	1	Total O P 5 4 1	0	0
4	M	1	Total O P 5 4 1	0	0
4	M	1	Total O P 5 4 1	0	0
4	M	1	Total O P 5 4 1	0	0

- Molecule 5 is BACTERIOCHLOROPHYLL A (three-letter code: BCL) (formula: C₅₅H₇₄MgN₄O₆).



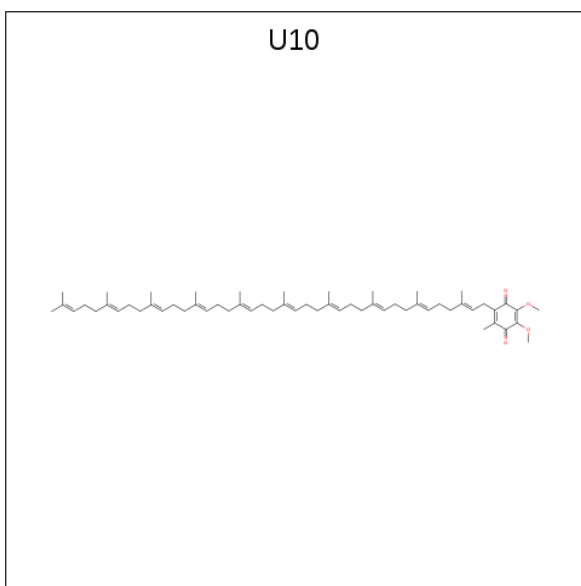
Mol	Chain	Residues	Atoms	ZeroOcc	AltConf
5	L	1	Total C Mg N O 66 55 1 4 6	0	0
5	L	1	Total C Mg N O 66 55 1 4 6	0	0
5	M	1	Total C Mg N O 66 55 1 4 6	0	0
5	M	1	Total C Mg N O 66 55 1 4 6	0	0

- Molecule 6 is BACTERIOPHEOPHYTIN A (three-letter code: BPH) (formula: C₅₅H₇₆N₄O₆).



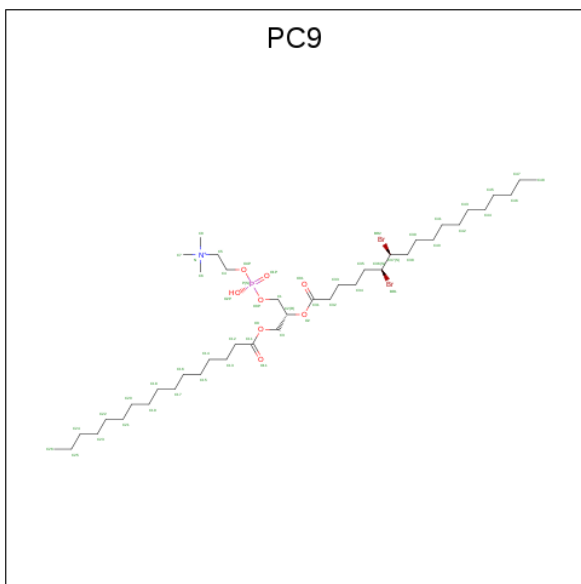
Mol	Chain	Residues	Atoms				ZeroOcc	AltConf
6	L	1	Total	C	N	O	0	0
			65	55	4	6		
6	M	1	Total	C	N	O	0	0
			65	55	4	6		

- Molecule 7 is UBIQUINONE-10 (three-letter code: U10) (formula: $C_{59}H_{90}O_4$).



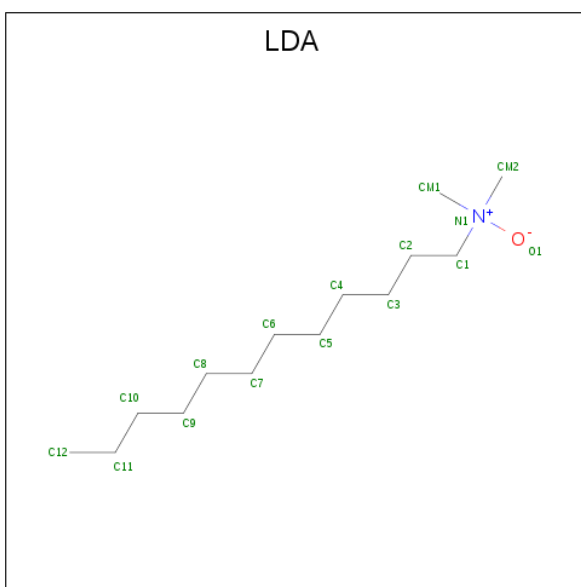
Mol	Chain	Residues	Atoms			ZeroOcc	AltConf
7	L	1	Total	C	O	0	0
			48	44	4		
7	M	1	Total	C	O	0	0
			48	44	4		

- Molecule 8 is (7R,14S)-14,15-DIBROMO-4-HYDROXY-N,N,N-TRIMETHYL-9-OXO-7-[(PALMITOYLOXY)METHYL]-3,5,8-TRIOXA-4-PHOSPHAHEXACOSAN-1-AMINIUM 4-OXIDE (three-letter code: PC9) (formula: $C_{42}H_{83}Br_2NO_8P$).



Mol	Chain	Residues	Atoms						ZeroOcc	AltConf
			Total	Br	C	N	O	P		
8	L	1	54	2	42	1	8	1	0	0

- Molecule 9 is LAURYL DIMETHYLAMINE-N-OXIDE (three-letter code: LDA) (formula: $C_{14}H_{31}NO$).

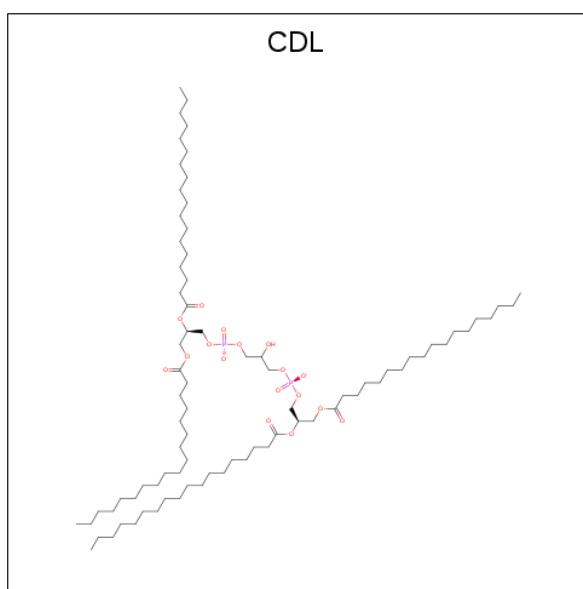


Mol	Chain	Residues	Atoms				ZeroOcc	AltConf
9	L	1	Total	C	N	O	0	0
			16	14	1	1		
9	L	1	Total	C	N	O	0	0
			16	14	1	1		
9	M	1	Total	C	N	O	0	0
			16	14	1	1		
9	M	1	Total	C	N	O	0	0
			16	14	1	1		
9	H	1	Total	C	N	O	0	0
			16	14	1	1		
9	H	1	Total	C	N	O	0	0
			16	14	1	1		
9	H	1	Total	C	N	O	0	0
			16	14	1	1		

- Molecule 10 is FE (III) ION (three-letter code: FE) (formula: Fe).

Mol	Chain	Residues	Atoms		ZeroOcc	AltConf
10	M	1	Total	Fe	0	0
			1	1		

- Molecule 11 is CARDIOLIPIN (three-letter code: CDL) (formula: $C_{81}H_{156}O_{17}P_2$).

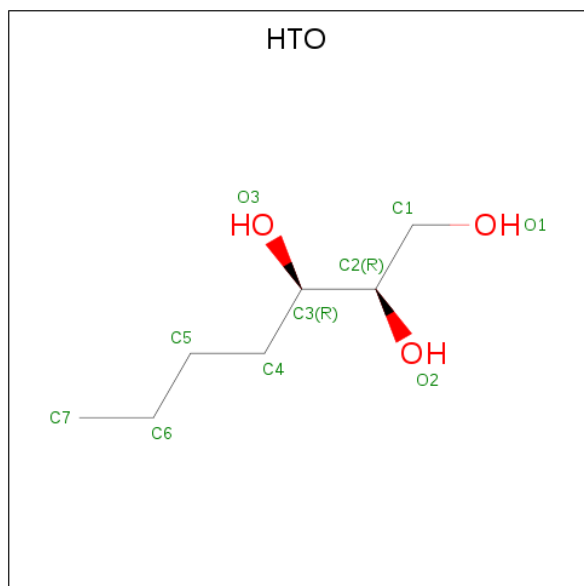


Mol	Chain	Residues	Atoms				ZeroOcc	AltConf
11	M	1	Total	C	O	P	0	0
			81	62	17	2		

- Molecule 12 is POTASSIUM ION (three-letter code: K) (formula: K).

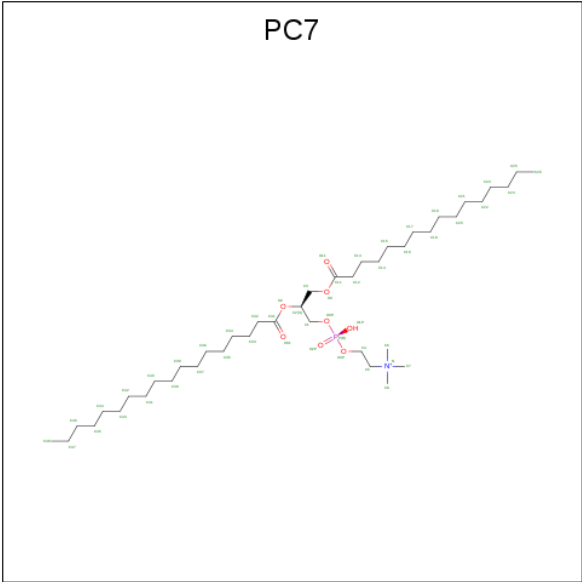
Mol	Chain	Residues	Atoms	ZeroOcc	AltConf
12	H	1	Total K 1 1	0	0

- Molecule 13 is HEPTANE-1,2,3-TRIOL (three-letter code: HTO) (formula: C₇H₁₆O₃).



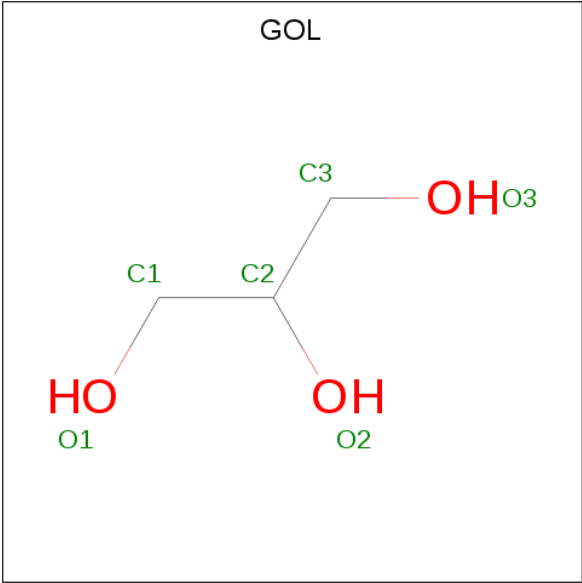
Mol	Chain	Residues	Atoms	ZeroOcc	AltConf
13	H	1	Total C O 10 7 3	0	0

- Molecule 14 is (7S)-4-HYDROXY-N,N,N-TRIMETHYL-9-OXO-7-[(PALMITOYLOXY)METHYL]-3,5,8-TRIOXA-4-PHOSPHAHEXACOSAN-1-AMINIUM 4-OXIDE (three-letter code: PC7) (formula: C₄₂H₈₅NO₈P).



Mol	Chain	Residues	Atoms					ZeroOcc	AltConf
14	H	1	Total	C	N	O	P	0	0
			52	42	1	8	1		

- Molecule 15 is GLYCEROL (three-letter code: GOL) (formula: C₃H₈O₃).



Mol	Chain	Residues	Atoms			ZeroOcc	AltConf
15	H	1	Total	C	O	0	0
			6	3	3		
15	H	1	Total	C	O	0	0
			6	3	3		
15	H	1	Total	C	O	0	0
			6	3	3		

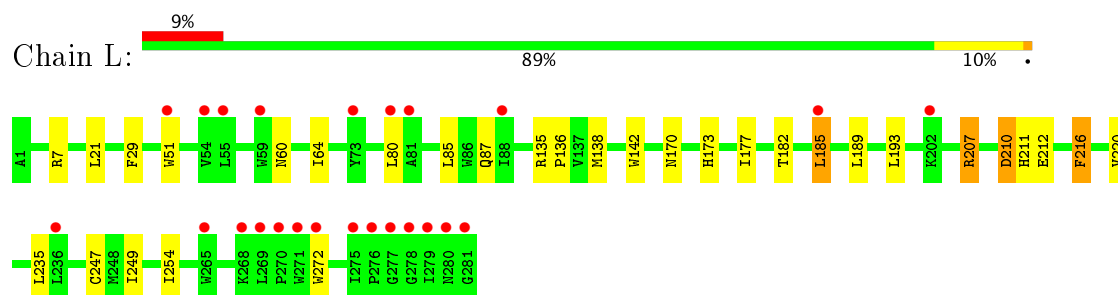
- Molecule 16 is water.

Mol	Chain	Residues	Atoms		ZeroOcc	AltConf
16	L	113	Total 113	O 113	0	0
16	M	139	Total 139	O 139	0	0
16	H	225	Total 225	O 225	0	0

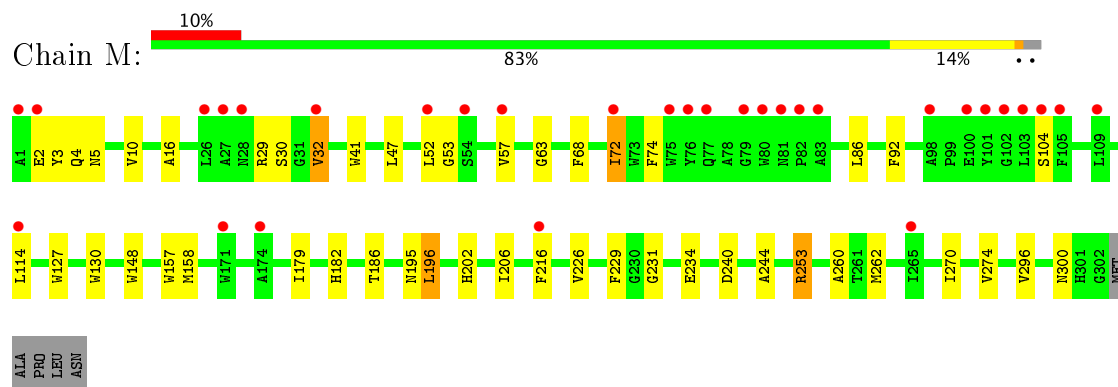
3 Residue-property plots [i](#)

These plots are drawn for all protein, RNA and DNA chains in the entry. The first graphic for a chain summarises the proportions of the various outlier classes displayed in the second graphic. The second graphic shows the sequence view annotated by issues in geometry and electron density. Residues are color-coded according to the number of geometric quality criteria for which they contain at least one outlier: green = 0, yellow = 1, orange = 2 and red = 3 or more. A red dot above a residue indicates a poor fit to the electron density ($RSRZ > 2$). Stretches of 2 or more consecutive residues without any outlier are shown as a green connector. Residues present in the sample, but not in the model, are shown in grey.

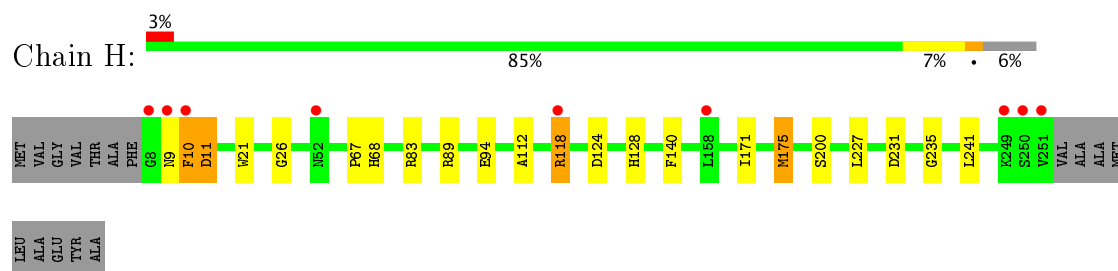
• Molecule 1: Reaction center protein L chain



• Molecule 2: Reaction center protein M chain



• Molecule 3: Reaction center protein H chain



4 Data and refinement statistics

Property	Value	Source
Space group	P 31 2 1	Depositor
Cell constants a, b, c, α , β , γ	139.54Å 139.54Å 183.97Å 90.00° 90.00° 120.00°	Depositor
Resolution (Å)	46.03 – 2.55 45.68 – 2.55	Depositor EDS
% Data completeness (in resolution range)	100.0 (46.03-2.55) 100.0 (45.68-2.55)	Depositor EDS
R_{merge}	0.09	Depositor
R_{sym}	(Not available)	Depositor
$\langle I/\sigma(I) \rangle$ ¹	4.69 (at 2.54Å)	Xtriage
Refinement program	REFMAC 5.2.0019	Depositor
R, R_{free}	0.178 , 0.210 0.182 , 0.211	Depositor DCC
R_{free} test set	3362 reflections (5.20%)	DCC
Wilson B-factor (Å ²)	48.3	Xtriage
Anisotropy	0.004	Xtriage
Bulk solvent k_{sol} (e/Å ³), B_{sol} (Å ²)	0.34 , 85.1	EDS
L-test for twinning ²	$\langle L \rangle = 0.50$, $\langle L^2 \rangle = 0.33$	Xtriage
Estimated twinning fraction	0.016 for -h,-k,l	Xtriage
F_o, F_c correlation	0.93	EDS
Total number of atoms	7923	wwPDB-VP
Average B, all atoms (Å ²)	52.0	wwPDB-VP

Xtriage's analysis on translational NCS is as follows: *The largest off-origin peak in the Patterson function is 2.67% of the height of the origin peak. No significant pseudotranslation is detected.*

¹Intensities estimated from amplitudes.

²Theoretical values of $\langle |L| \rangle$, $\langle L^2 \rangle$ for acentric reflections are 0.5, 0.333 respectively for untwinned datasets, and 0.375, 0.2 for perfectly twinned datasets.

5 Model quality ⓘ

5.1 Standard geometry ⓘ

Bond lengths and bond angles in the following residue types are not validated in this section: BCL, GOL, LDA, PC9, HTO, BPH, K, PC7, CDL, FE, U10, PO4

The Z score for a bond length (or angle) is the number of standard deviations the observed value is removed from the expected value. A bond length (or angle) with $|Z| > 5$ is considered an outlier worth inspection. RMSZ is the root-mean-square of all Z scores of the bond lengths (or angles).

Mol	Chain	Bond lengths		Bond angles	
		RMSZ	$\# Z > 5$	RMSZ	$\# Z > 5$
1	L	0.89	0/2334	0.75	2/3194 (0.1%)
2	M	0.88	1/2590 (0.0%)	0.80	5/3532 (0.1%)
3	H	0.93	0/1986	0.86	3/2697 (0.1%)
All	All	0.90	1/6910 (0.0%)	0.80	10/9423 (0.1%)

All (1) bond length outliers are listed below:

Mol	Chain	Res	Type	Atoms	Z	Observed(Å)	Ideal(Å)
2	M	260	ALA	CA-CB	5.14	1.63	1.52

All (10) bond angle outliers are listed below:

Mol	Chain	Res	Type	Atoms	Z	Observed(°)	Ideal(°)
2	M	253[A]	ARG	NE-CZ-NH2	-7.34	116.63	120.30
2	M	253[B]	ARG	NE-CZ-NH2	-7.34	116.63	120.30
3	H	83	ARG	NE-CZ-NH2	-6.20	117.20	120.30
1	L	210	ASP	CB-CG-OD1	5.57	123.32	118.30
1	L	7	ARG	NE-CZ-NH2	5.51	123.05	120.30
3	H	124	ASP	CB-CG-OD1	5.42	123.18	118.30
2	M	240	ASP	CB-CG-OD1	5.33	123.09	118.30
3	H	83	ARG	NE-CZ-NH1	5.29	122.94	120.30
2	M	29	ARG	NE-CZ-NH1	5.11	122.86	120.30
2	M	29	ARG	NE-CZ-NH2	-5.10	117.75	120.30

There are no chirality outliers.

There are no planarity outliers.

5.2 Too-close contacts ⓘ

In the following table, the Non-H and H(model) columns list the number of non-hydrogen atoms and hydrogen atoms in the chain respectively. The H(added) column lists the number of hydrogen atoms added and optimized by MolProbity. The Clashes column lists the number of clashes within the asymmetric unit, whereas Symm-Clashes lists symmetry related clashes.

Mol	Chain	Non-H	H(model)	H(added)	Clashes	Symm-Clashes
1	L	2234	0	2193	21	0
2	M	2466	0	2371	35	0
3	H	1891	0	1902	14	0
4	L	5	0	0	1	0
4	M	15	0	0	0	0
5	L	132	0	148	6	0
5	M	132	0	148	19	0
6	L	65	0	75	0	0
6	M	65	0	76	11	0
7	L	48	0	63	12	0
7	M	48	0	63	1	0
8	L	54	0	80	36	0
9	H	64	0	124	7	0
9	L	32	0	62	1	0
9	M	32	0	62	1	0
10	M	1	0	0	0	0
11	M	81	0	106	2	0
12	H	1	0	0	0	0
13	H	10	0	16	1	0
14	H	52	0	84	8	0
15	H	18	0	24	2	0
16	H	225	0	0	2	0
16	L	113	0	0	1	0
16	M	139	0	0	3	0
All	All	7923	0	7597	128	0

The all-atom clashscore is defined as the number of clashes found per 1000 atoms (including hydrogen atoms). The all-atom clashscore for this structure is 8.

All (128) close contacts within the same asymmetric unit are listed below, sorted by their clash magnitude.

Atom-1	Atom-2	Interatomic distance (Å)	Clash overlap (Å)
8:L:802:PC9:H442	8:L:802:PC9:C48	1.58	1.26
8:L:802:PC9:C44	8:L:802:PC9:H482	1.67	1.19
7:L:502:U10:H351	7:L:502:U10:H38	1.28	1.15

Continued on next page...

Continued from previous page...

Atom-1	Atom-2	Interatomic distance (Å)	Clash overlap (Å)
8:L:802:PC9:H483	6:M:401:BPH:HED1	1.40	1.03
7:L:502:U10:H153	8:L:802:PC9:H471	1.38	1.02
1:L:189:LEU:CD1	8:L:802:PC9:H472	1.96	0.95
8:L:802:PC9:C48	8:L:802:PC9:C44	2.29	0.94
14:H:801:PC7:H73	9:H:905:LDA:H112	1.50	0.92
14:H:801:PC7:H451	9:H:901:LDA:H122	1.53	0.89
7:L:502:U10:H351	7:L:502:U10:C38	2.04	0.87
7:L:502:U10:H153	8:L:802:PC9:C47	2.03	0.87
2:M:253[B]:ARG:NH1	16:M:1468:HOH:O	2.07	0.85
2:M:16:ALA:HB1	2:M:32:VAL:HG11	1.59	0.84
5:M:311:BCL:H41	5:M:311:BCL:H71	1.61	0.81
8:L:802:PC9:C26	6:M:401:BPH:HED2	2.12	0.79
14:H:801:PC7:H431	9:H:901:LDA:H121	1.69	0.75
8:L:802:PC9:H483	6:M:401:BPH:CED	2.17	0.73
14:H:801:PC7:H32	14:H:801:PC7:O31	1.87	0.72
7:L:502:U10:C15	8:L:802:PC9:H471	2.18	0.69
1:L:189:LEU:HD12	8:L:802:PC9:H472	1.72	0.69
8:L:802:PC9:H231	5:M:313:BCL:C20	2.23	0.69
2:M:2[B]:GLU:O	2:M:4:GLN:NE2	2.26	0.68
5:L:314:BCL:HBB2	5:L:314:BCL:HMB1	1.77	0.67
8:L:802:PC9:C23	5:M:313:BCL:C20	2.73	0.66
3:H:128[B]:HIS:HD1	15:H:708:GOL:C2	2.09	0.65
5:M:311:BCL:C7	5:M:311:BCL:H41	2.19	0.65
5:M:311:BCL:H102	5:M:313:BCL:H191	1.79	0.65
8:L:802:PC9:H52	2:M:30:SER:HA	1.79	0.64
8:L:802:PC9:H442	8:L:802:PC9:H482	0.75	0.64
8:L:802:PC9:C23	5:M:313:BCL:H201	2.28	0.64
2:M:63:GLY:HA3	6:M:401:BPH:H5C2	1.79	0.63
2:M:270:ILE:HD13	11:M:800:CDL:H711	1.81	0.62
5:M:311:BCL:HBB2	5:M:311:BCL:HMB1	1.81	0.62
14:H:801:PC7:C7	9:H:905:LDA:H112	2.28	0.62
7:L:502:U10:C12	8:L:802:PC9:H471	2.30	0.61
5:M:311:BCL:CBB	5:M:311:BCL:HMB1	2.31	0.61
2:M:179:ILE:HG23	5:M:311:BCL:HED1	1.83	0.60
2:M:72:ILE:HD13	2:M:72:ILE:N	2.17	0.59
2:M:262:MET:HE3	2:M:262:MET:CA	2.31	0.59
8:L:802:PC9:BR2	2:M:47:LEU:HD22	2.58	0.59
2:M:68[A]:PHE:CD1	2:M:72:ILE:HD11	2.38	0.58
2:M:253[A]:ARG:NH2	16:M:1461:HOH:O	2.36	0.58
8:L:802:PC9:H231	5:M:313:BCL:H203	1.86	0.58
8:L:802:PC9:H251	8:L:802:PC9:H202	1.85	0.57

Continued on next page...

Continued from previous page...

Atom-1	Atom-2	Interatomic distance (Å)	Clash overlap (Å)
3:H:200:SER:H	13:H:709:HTO:H73	1.69	0.57
1:L:185:LEU:HD13	8:L:802:PC9:H461	1.86	0.57
7:L:502:U10:H153	8:L:802:PC9:C46	2.35	0.57
5:M:311:BCL:C4	5:M:311:BCL:H71	2.34	0.56
7:L:502:U10:H122	8:L:802:PC9:C48	2.36	0.56
2:M:68[A]:PHE:CE1	2:M:72:ILE:HD11	2.41	0.56
2:M:229:PHE:HB2	2:M:244:ALA:HB2	1.88	0.56
5:L:314:BCL:CBB	5:L:314:BCL:HMB1	2.37	0.55
1:L:51:TRP:CZ3	1:L:80:LEU:HD13	2.42	0.54
2:M:3:TYR:CZ	2:M:5:ASN:HA	2.43	0.53
2:M:179:ILE:CG2	5:M:311:BCL:HED1	2.39	0.53
9:H:904:LDA:HM13	9:H:904:LDA:C3	2.39	0.53
1:L:189:LEU:HD11	8:L:802:PC9:H472	1.89	0.53
3:H:9:ASN:C	3:H:11:ASP:H	2.13	0.52
8:L:802:PC9:H31	8:L:802:PC9:O1P	2.09	0.52
2:M:68[A]:PHE:O	2:M:72:ILE:HD13	2.10	0.52
1:L:173:HIS:CE1	1:L:177:ILE:HD11	2.45	0.51
2:M:41:TRP:CZ3	9:M:907:LDA:HM22	2.45	0.51
8:L:802:PC9:H483	8:L:802:PC9:C44	2.32	0.51
7:L:502:U10:H153	8:L:802:PC9:H461	1.92	0.51
2:M:72:ILE:N	2:M:72:ILE:CD1	2.74	0.51
2:M:148:TRP:HA	2:M:148:TRP:CE3	2.47	0.50
2:M:68[B]:PHE:O	2:M:72:ILE:HD13	2.11	0.50
6:M:401:BPH:H192	6:M:401:BPH:C15	2.42	0.49
6:M:401:BPH:CBC	6:M:401:BPH:HHD	2.43	0.49
1:L:29:PHE:CE1	7:M:501:U10:H311	2.48	0.49
1:L:182:THR:OG1	5:M:311:BCL:H2	2.13	0.49
7:L:502:U10:H122	8:L:802:PC9:H471	1.95	0.49
4:L:703:PO4:O1	16:L:1467:HOH:O	2.20	0.49
3:H:21:TRP:CZ3	14:H:801:PC7:H72	2.48	0.48
8:L:802:PC9:BR1	5:M:311:BCL:H193	2.68	0.48
2:M:10:VAL:HG22	16:H:1457:HOH:O	2.14	0.47
8:L:802:PC9:C48	6:M:401:BPH:HED1	2.27	0.47
3:H:112:ALA:HA	3:H:235:GLY:O	2.14	0.47
2:M:234:GLU:CG	2:M:262:MET:HE1	2.45	0.47
1:L:207:ARG:HG2	1:L:211:HIS:CG	2.50	0.47
8:L:802:PC9:H232	5:M:313:BCL:C20	2.44	0.47
3:H:128[B]:HIS:HD1	15:H:708:GOL:H2	1.80	0.47
16:M:1078:HOH:O	3:H:175:MET:HE1	2.14	0.47
8:L:802:PC9:H261	6:M:401:BPH:HED2	1.95	0.47
5:L:312:BCL:CBB	5:L:312:BCL:HMB1	2.45	0.46

Continued on next page...

Continued from previous page...

Atom-1	Atom-2	Interatomic distance (Å)	Clash overlap (Å)
8:L:802:PC9:H232	5:M:313:BCL:H201	1.97	0.46
6:M:401:BPH:H152	6:M:401:BPH:H192	1.96	0.46
1:L:207:ARG:CG	1:L:211:HIS:CG	2.99	0.46
3:H:118[A]:ARG:NH2	16:H:1237:HOH:O	2.48	0.46
1:L:138:MET:SD	1:L:249:ILE:HD11	2.56	0.46
5:L:312:BCL:HHC	5:L:312:BCL:OBB	2.15	0.46
11:M:800:CDL:H172	3:H:26:GLY:HA3	1.97	0.46
2:M:53:GLY:O	2:M:57:VAL:HG23	2.16	0.45
5:M:311:BCL:H102	5:M:313:BCL:C19	2.45	0.45
14:H:801:PC7:C43	9:H:901:LDA:H121	2.43	0.45
5:L:314:BCL:C4A	5:L:314:BCL:HBA1	2.47	0.45
2:M:186:THR:HG23	5:M:313:BCL:HMD2	1.98	0.45
2:M:262:MET:HA	2:M:262:MET:HE3	1.99	0.45
2:M:157:TRP:CE3	2:M:158:MET:HG2	2.52	0.44
1:L:51:TRP:HZ3	1:L:80:LEU:HD13	1.83	0.44
3:H:89:ARG:NH2	3:H:94[A]:GLU:HG2	2.31	0.44
1:L:135:ARG:HB3	1:L:136:PRO:HD3	2.00	0.43
3:H:67:PRO:HB2	3:H:68:HIS:CD2	2.52	0.43
2:M:226:VAL:HG23	2:M:231:GLY:HA3	2.00	0.43
1:L:216:PHE:CD2	7:L:502:U10:H102	2.54	0.43
8:L:802:PC9:H241	6:M:401:BPH:HMA1	2.00	0.43
9:H:904:LDA:HM13	9:H:904:LDA:H31	2.00	0.43
1:L:170:ASN:HB3	1:L:173:HIS:HB3	2.01	0.43
5:L:312:BCL:NA	5:M:313:BCL:HBB2	2.34	0.43
2:M:202:HIS:CE1	2:M:206:ILE:HD11	2.53	0.42
9:L:906:LDA:H32	9:L:906:LDA:HM13	2.01	0.42
2:M:196:LEU:HA	2:M:196:LEU:HD12	1.82	0.42
2:M:74:PHE:CD1	2:M:92:PHE:HB3	2.54	0.42
2:M:296:VAL:O	2:M:300:ASN:ND2	2.49	0.42
1:L:220:VAL:HG11	8:L:802:PC9:H263	2.02	0.42
1:L:60:ASN:O	1:L:64:ILE:HG13	2.20	0.42
1:L:51:TRP:CE3	1:L:85:LEU:HD21	2.55	0.42
8:L:802:PC9:H263	6:M:401:BPH:HED2	1.98	0.42
7:L:502:U10:H301	7:L:502:U10:H322	1.81	0.42
1:L:87:GLN:NE2	1:L:142:TRP:CD1	2.88	0.41
14:H:801:PC7:H11	14:H:801:PC7:H41	2.02	0.41
3:H:140:PHE:CE1	3:H:171:ILE:HG23	2.56	0.41
2:M:2[B]:GLU:OE2	3:H:241:LEU:HD21	2.20	0.41
1:L:80:LEU:O	1:L:85:LEU:HD12	2.21	0.41
2:M:127:TRP:O	2:M:130:TRP:HB3	2.21	0.41
2:M:148:TRP:HA	2:M:148:TRP:HE3	1.85	0.40

Continued on next page...

Continued from previous page...

Atom-1	Atom-2	Interatomic distance (Å)	Clash overlap (Å)
3:H:227:LEU:HA	3:H:227:LEU:HD23	1.89	0.40
1:L:193:LEU:HD21	1:L:212:GLU:HB3	2.03	0.40

There are no symmetry-related clashes.

5.3 Torsion angles [i](#)

5.3.1 Protein backbone [i](#)

In the following table, the Percentiles column shows the percent Ramachandran outliers of the chain as a percentile score with respect to all X-ray entries followed by that with respect to entries of similar resolution.

The Analysed column shows the number of residues for which the backbone conformation was analysed, and the total number of residues.

Mol	Chain	Analysed	Favoured	Allowed	Outliers	Percentiles	
1	L	281/281 (100%)	275 (98%)	6 (2%)	0	100	100
2	M	310/307 (101%)	299 (96%)	10 (3%)	1 (0%)	44	64
3	H	251/260 (96%)	245 (98%)	5 (2%)	1 (0%)	38	57
All	All	842/848 (99%)	819 (97%)	21 (2%)	2 (0%)	51	71

All (2) Ramachandran outliers are listed below:

Mol	Chain	Res	Type
3	H	10	PHE
2	M	195	ASN

5.3.2 Protein sidechains [i](#)

In the following table, the Percentiles column shows the percent sidechain outliers of the chain as a percentile score with respect to all X-ray entries followed by that with respect to entries of similar resolution.

The Analysed column shows the number of residues for which the sidechain conformation was analysed, and the total number of residues.

Mol	Chain	Analysed	Rotameric	Outliers	Percentiles	
1	L	222/220 (101%)	213 (96%)	9 (4%)	35	58

Continued on next page...

Continued from previous page...

Mol	Chain	Analysed	Rotameric	Outliers	Percentiles	
2	M	246/240 (102%)	236 (96%)	10 (4%)	35	58
3	H	207/208 (100%)	201 (97%)	6 (3%)	48	72
All	All	675/668 (101%)	650 (96%)	25 (4%)	39	63

All (25) residues with a non-rotameric sidechain are listed below:

Mol	Chain	Res	Type
1	L	21	LEU
1	L	185	LEU
1	L	207	ARG
1	L	210	ASP
1	L	216	PHE
1	L	235	LEU
1	L	247	CYS
1	L	254	ILE
1	L	272	TRP
2	M	32	VAL
2	M	52	LEU
2	M	72	ILE
2	M	86	LEU
2	M	104	SER
2	M	114	LEU
2	M	182	HIS
2	M	196	LEU
2	M	216	PHE
2	M	274	VAL
3	H	10	PHE
3	H	11	ASP
3	H	118[A]	ARG
3	H	118[B]	ARG
3	H	175	MET
3	H	231	ASP

Some sidechains can be flipped to improve hydrogen bonding and reduce clashes. All (1) such sidechains are listed below:

Mol	Chain	Res	Type
3	H	68	HIS

5.3.3 RNA ⓘ

There are no RNA molecules in this entry.

5.4 Non-standard residues in protein, DNA, RNA chains ⓘ

There are no non-standard protein/DNA/RNA residues in this entry.

5.5 Carbohydrates ⓘ

There are no carbohydrates in this entry.

5.6 Ligand geometry ⓘ

Of 29 ligands modelled in this entry, 2 are monoatomic - leaving 27 for Mogul analysis.

In the following table, the Counts columns list the number of bonds (or angles) for which Mogul statistics could be retrieved, the number of bonds (or angles) that are observed in the model and the number of bonds (or angles) that are defined in the Chemical Component Dictionary. The Link column lists molecule types, if any, to which the group is linked. The Z score for a bond length (or angle) is the number of standard deviations the observed value is removed from the expected value. A bond length (or angle) with $|Z| > 2$ is considered an outlier worth inspection. RMSZ is the root-mean-square of all Z scores of the bond lengths (or angles).

Mol	Type	Chain	Res	Link	Bond lengths			Bond angles		
					Counts	RMSZ	# $ Z > 2$	Counts	RMSZ	# $ Z > 2$
15	GOL	H	705	-	5,5,5	0.45	0	5,5,5	0.48	0
15	GOL	H	706	-	5,5,5	0.48	0	5,5,5	0.89	0
15	GOL	H	708	-	5,5,5	0.38	0	5,5,5	0.53	0
13	HTO	H	709	-	9,9,9	0.44	0	9,10,10	0.44	0
14	PC7	H	801	-	51,51,51	0.89	1 (1%)	56,59,59	1.03	3 (5%)
9	LDA	H	901	-	13,15,15	2.02	1 (7%)	14,17,17	0.91	1 (7%)
9	LDA	H	903	-	13,15,15	2.32	1 (7%)	14,17,17	0.61	0
9	LDA	H	904	-	13,15,15	2.25	1 (7%)	14,17,17	0.98	1 (7%)
9	LDA	H	905	-	13,15,15	2.32	1 (7%)	14,17,17	0.57	0
5	BCL	L	312	1	55,74,74	1.24	4 (7%)	65,115,115	1.36	9 (13%)
5	BCL	L	314	1	55,74,74	1.26	2 (3%)	65,115,115	1.69	12 (18%)
6	BPH	L	402	-	65,70,70	0.85	1 (1%)	75,101,101	1.38	9 (12%)
7	U10	L	502	-	48,48,63	0.97	3 (6%)	58,61,79	1.72	12 (20%)
4	PO4	L	703	-	4,4,4	0.72	0	6,6,6	0.74	0
8	PC9	L	802	-	53,53,53	0.81	2 (3%)	58,63,63	1.28	6 (10%)

Mol	Type	Chain	Res	Link	Bond lengths			Bond angles		
					Counts	RMSZ	# Z > 2	Counts	RMSZ	# Z > 2
9	LDA	L	902	-	13,15,15	2.18	1 (7%)	14,17,17	1.48	2 (14%)
9	LDA	L	906	-	13,15,15	2.34	1 (7%)	14,17,17	0.87	1 (7%)
5	BCL	M	311	2	55,74,74	1.31	2 (3%)	65,115,115	1.57	12 (18%)
5	BCL	M	313	2	55,74,74	1.47	3 (5%)	65,115,115	1.69	15 (23%)
6	BPH	M	401	-	65,70,70	0.76	2 (3%)	75,101,101	1.55	14 (18%)
7	U10	M	501	-	48,48,63	1.16	6 (12%)	58,61,79	1.59	10 (17%)
4	PO4	M	701	-	4,4,4	0.79	0	6,6,6	0.69	0
4	PO4	M	702	-	4,4,4	0.56	0	6,6,6	0.65	0
4	PO4	M	704	-	4,4,4	0.72	0	6,6,6	0.66	0
11	CDL	M	800	-	80,80,99	1.17	4 (5%)	82,92,111	1.36	9 (10%)
9	LDA	M	907	-	13,15,15	2.20	1 (7%)	14,17,17	0.76	1 (7%)
9	LDA	M	920	-	13,15,15	2.04	1 (7%)	14,17,17	1.09	2 (14%)

In the following table, the Chirals column lists the number of chiral outliers, the number of chiral centers analysed, the number of these observed in the model and the number defined in the Chemical Component Dictionary. Similar counts are reported in the Torsion and Rings columns. '-' means no outliers of that kind were identified.

Mol	Type	Chain	Res	Link	Chirals	Torsions	Rings
15	GOL	H	705	-	-	0/4/4/4	0/0/0/0
15	GOL	H	706	-	-	0/4/4/4	0/0/0/0
15	GOL	H	708	-	-	0/4/4/4	0/0/0/0
13	HTO	H	709	-	-	0/10/10/10	0/0/0/0
14	PC7	H	801	-	-	0/55/55/55	0/0/0/0
9	LDA	H	901	-	-	0/13/13/13	0/0/0/0
9	LDA	H	903	-	-	0/13/13/13	0/0/0/0
9	LDA	H	904	-	-	0/13/13/13	0/0/0/0
9	LDA	H	905	-	-	0/13/13/13	0/0/0/0
5	BCL	L	312	1	-	0/37/137/137	0/0/9/9
5	BCL	L	314	1	-	0/37/137/137	0/0/9/9
6	BPH	L	402	-	-	0/54/105/105	0/1/6/6
7	U10	L	502	-	-	0/45/69/87	0/1/1/1
4	PO4	L	703	-	-	0/0/0/0	0/0/0/0
8	PC9	L	802	-	-	0/60/60/60	0/0/0/0
9	LDA	L	902	-	-	0/13/13/13	0/0/0/0
9	LDA	L	906	-	-	0/13/13/13	0/0/0/0
5	BCL	M	311	2	-	0/37/137/137	0/0/9/9
5	BCL	M	313	2	-	0/37/137/137	0/0/9/9
6	BPH	M	401	-	-	0/54/105/105	0/1/6/6
7	U10	M	501	-	-	0/45/69/87	0/1/1/1
4	PO4	M	701	-	-	0/0/0/0	0/0/0/0

Continued on next page...

Continued from previous page...

Mol	Type	Chain	Res	Link	Chirals	Torsions	Rings
4	PO4	M	702	-	-	0/0/0/0	0/0/0/0
4	PO4	M	704	-	-	0/0/0/0	0/0/0/0
11	CDL	M	800	-	-	0/91/91/110	0/0/0/0
9	LDA	M	907	-	-	0/13/13/13	0/0/0/0
9	LDA	M	920	-	-	0/13/13/13	0/0/0/0

All (38) bond length outliers are listed below:

Mol	Chain	Res	Type	Atoms	Z	Observed(Å)	Ideal(Å)
9	L	906	LDA	O1-N1	-8.15	1.26	1.42
9	H	905	LDA	O1-N1	-8.13	1.26	1.42
9	H	903	LDA	O1-N1	-8.11	1.26	1.42
9	H	904	LDA	O1-N1	-7.85	1.26	1.42
9	M	907	LDA	O1-N1	-7.68	1.27	1.42
9	L	902	LDA	O1-N1	-7.58	1.27	1.42
9	H	901	LDA	O1-N1	-7.14	1.28	1.42
9	M	920	LDA	O1-N1	-7.12	1.28	1.42
5	M	313	BCL	C3C-C4C	-3.51	1.47	1.51
7	M	501	U10	O3-C3M	-2.17	1.40	1.45
6	M	401	BPH	CBA-CGA	-2.01	1.44	1.50
7	M	501	U10	O4-C4	2.06	1.42	1.36
6	L	402	BPH	C3C-C4C	2.09	1.54	1.50
5	L	312	BCL	C5-C3	2.12	1.55	1.51
7	M	501	U10	C33-C34	2.17	1.38	1.33
8	L	802	PC9	O3-C3	2.21	1.50	1.45
7	L	502	U10	O4-C4	2.35	1.42	1.36
14	H	801	PC7	C1-C2	2.36	1.57	1.50
7	L	502	U10	C13-C14	2.36	1.38	1.33
7	M	501	U10	C13-C14	2.37	1.38	1.33
5	L	312	BCL	C4-C3	2.47	1.57	1.50
6	M	401	BPH	CHC-C1C	2.78	1.41	1.36
7	M	501	U10	O2-C2	2.79	1.29	1.23
8	L	802	PC9	P-O1P	2.82	1.61	1.50
11	M	800	CDL	OB8-CB7	3.98	1.45	1.33
7	L	502	U10	O3-C3	4.07	1.47	1.36
7	M	501	U10	O3-C3	4.10	1.47	1.36
5	L	312	BCL	CHB-C4A	4.53	1.39	1.33
11	M	800	CDL	OA6-CA5	4.56	1.47	1.34
5	L	314	BCL	CHB-C4A	4.67	1.39	1.33
11	M	800	CDL	OB6-CB5	4.71	1.48	1.34
11	M	800	CDL	OA8-CA7	4.83	1.47	1.33
5	M	311	BCL	CHB-C4A	4.91	1.39	1.33

Continued on next page...

Continued from previous page...

Mol	Chain	Res	Type	Atoms	Z	Observed(Å)	Ideal(Å)
5	L	312	BCL	CHC-C1C	5.31	1.40	1.33
5	M	313	BCL	CHB-C4A	5.37	1.40	1.33
5	L	314	BCL	CHC-C1C	5.82	1.40	1.33
5	M	311	BCL	CHC-C1C	6.91	1.42	1.33
5	M	313	BCL	CHC-C1C	6.98	1.42	1.33

All (119) bond angle outliers are listed below:

Mol	Chain	Res	Type	Atoms	Z	Observed(°)	Ideal(°)
5	M	313	BCL	CMB-C2B-C1B	-6.45	118.55	128.46
6	M	401	BPH	OBD-CAD-CBD	-4.70	118.85	125.94
9	L	902	LDA	CM2-N1-CM1	-4.66	102.07	110.99
5	M	311	BCL	CMB-C2B-C1B	-4.26	121.91	128.46
8	L	802	PC9	C2-O2-C31	-4.11	108.15	117.88
7	M	501	U10	C32-C33-C34	-4.02	117.57	127.68
5	L	312	BCL	CMB-C2B-C1B	-4.02	122.29	128.46
7	M	501	U10	C17-C18-C19	-3.96	117.74	127.68
5	L	314	BCL	CAA-C2A-C3A	-3.82	102.34	112.81
5	M	311	BCL	C4-C3-C2	-3.81	113.52	123.69
5	L	314	BCL	CMB-C2B-C1B	-3.75	122.71	128.46
5	M	313	BCL	CAC-C3C-C2C	-3.71	104.91	114.24
7	L	502	U10	C31-C29-C28	-3.69	113.55	121.10
5	L	314	BCL	CAC-C3C-C2C	-3.65	105.06	114.24
5	L	314	BCL	CAC-C3C-C4C	-3.59	104.61	112.58
5	L	312	BCL	CAA-C2A-C3A	-3.59	102.97	112.81
7	M	501	U10	C7-C6-C5	-3.50	114.00	118.47
5	L	314	BCL	O1D-CGD-CBD	-3.44	118.41	124.60
7	L	502	U10	C35-C34-C33	-3.44	114.51	123.69
6	M	401	BPH	C1-C2-C3	-3.44	119.62	125.96
6	L	402	BPH	O2D-CGD-O1D	-3.43	116.92	123.82
7	L	502	U10	O2-C2-C3	-3.43	113.66	120.95
7	M	501	U10	C26-C27-C28	-3.42	100.23	111.97
11	M	800	CDL	CB6-CB4-CB3	-3.31	104.38	111.86
6	L	402	BPH	C1-C2-C3	-3.27	119.94	125.96
5	M	311	BCL	CED-O2D-CGD	-3.20	108.47	115.97
9	H	904	LDA	CM2-N1-CM1	-3.11	105.04	110.99
7	M	501	U10	C31-C29-C28	-3.05	114.86	121.10
5	M	311	BCL	CMA-C3A-C4A	-3.03	103.63	111.77
6	M	401	BPH	CBB-CAB-C3B	-2.99	114.11	120.52
6	M	401	BPH	CAA-C2A-C3A	-2.97	104.68	112.81
5	L	314	BCL	C5-C3-C2	-2.95	115.07	121.10
11	M	800	CDL	OB8-CB7-OB9	-2.90	116.35	123.55

Continued on next page...

Continued from previous page...

Mol	Chain	Res	Type	Atoms	Z	Observed(°)	Ideal(°)
5	L	312	BCL	CHA-C1A-NA	-2.80	119.68	126.18
5	M	313	BCL	CHA-C1A-NA	-2.78	119.73	126.18
9	M	920	LDA	CM2-N1-CM1	-2.72	105.78	110.99
5	M	313	BCL	O2D-CGD-O1D	-2.69	118.42	123.82
5	M	311	BCL	CHA-C1A-NA	-2.68	119.95	126.18
6	M	401	BPH	C4D-C3D-CAD	-2.62	106.28	107.78
7	L	502	U10	C12-C13-C14	-2.60	121.14	127.68
5	M	313	BCL	C4B-CHC-C1C	-2.60	124.97	130.12
6	M	401	BPH	C4B-C3B-CAB	-2.56	120.64	130.09
7	M	501	U10	C22-C23-C24	-2.56	121.26	127.68
6	L	402	BPH	C1C-NC-C4C	-2.48	108.31	110.54
5	L	314	BCL	CMA-C3A-C2A	-2.46	103.78	113.77
5	L	312	BCL	C5-C3-C2	-2.40	116.19	121.10
9	H	901	LDA	CM2-N1-CM1	-2.40	106.40	110.99
8	L	802	PC9	C35-C36-C37	-2.40	109.55	115.62
5	M	313	BCL	OBD-CAD-CBD	-2.39	122.32	125.94
7	L	502	U10	C21-C22-C23	-2.37	103.84	111.97
5	L	312	BCL	OBD-CAD-CBD	-2.26	122.52	125.94
5	M	313	BCL	OBB-CAB-CBB	-2.26	115.00	120.16
6	M	401	BPH	CMA-C3A-C2A	-2.26	104.60	113.77
7	L	502	U10	C1M-C1-C6	-2.26	119.62	124.20
9	L	906	LDA	CM2-N1-CM1	-2.23	106.72	110.99
9	M	907	LDA	CM2-N1-CM1	-2.20	106.79	110.99
5	M	313	BCL	CAC-C3C-C4C	-2.19	107.72	112.58
11	M	800	CDL	CA4-OA6-CA5	-2.17	112.75	117.88
7	M	501	U10	C22-C21-C19	-2.15	105.67	112.93
6	M	401	BPH	O2D-CGD-O1D	-2.15	119.50	123.82
7	L	502	U10	C16-C17-C18	-2.10	104.77	111.97
7	L	502	U10	C22-C23-C24	-2.09	122.42	127.68
11	M	800	CDL	OA6-CA5-OA7	-2.04	118.59	123.68
6	L	402	BPH	CMA-C3A-C2A	-2.03	105.52	113.77
8	L	802	PC9	C24-C23-C22	-2.03	104.01	114.45
6	M	401	BPH	C1-O2A-CGA	2.02	121.62	116.77
5	L	312	BCL	C4-C3-C5	2.11	118.96	115.29
5	M	313	BCL	O1D-CGD-CBD	2.12	128.41	124.60
7	M	501	U10	C15-C14-C16	2.12	118.97	115.29
11	M	800	CDL	CA6-OA8-CA7	2.12	123.52	117.13
5	L	312	BCL	CED-O2D-CGD	2.14	120.98	115.97
5	L	314	BCL	C2C-C3C-C4C	2.17	104.59	101.34
9	L	902	LDA	CM1-N1-C1	2.21	114.87	110.23
5	M	311	BCL	O2D-CGD-CBD	2.23	115.28	111.30
6	M	401	BPH	C1B-NB-C4B	2.30	111.08	106.52

Continued on next page...

Continued from previous page...

Mol	Chain	Res	Type	Atoms	Z	Observed(°)	Ideal(°)
5	M	313	BCL	C2C-C3C-C4C	2.32	104.81	101.34
5	M	313	BCL	C4-C3-C5	2.33	119.33	115.29
8	L	802	PC9	O3-C3-C2	2.33	114.52	108.66
5	L	314	BCL	CMB-C2B-C3B	2.36	129.27	124.89
14	H	801	PC7	O3-C11-C12	2.37	118.81	111.90
6	L	402	BPH	CAC-C3C-C2C	2.38	120.22	114.24
5	M	311	BCL	CAA-CBA-CGA	2.39	120.53	113.35
6	M	401	BPH	OBD-CAD-C3D	2.40	132.45	128.03
6	M	401	BPH	C2C-C3C-C4C	2.41	104.95	101.34
7	M	501	U10	C4M-O4-C4	2.42	125.11	116.44
6	L	402	BPH	CMD-C2D-C3D	2.44	129.42	124.89
5	M	313	BCL	CMD-C2D-C3D	2.46	129.46	124.89
7	L	502	U10	C3M-O3-C3	2.50	125.37	116.44
9	M	920	LDA	O1-N1-C1	2.50	115.41	109.27
5	M	311	BCL	C4-C3-C5	2.50	119.63	115.29
5	L	312	BCL	C1-O2A-CGA	2.51	122.81	116.77
5	M	311	BCL	OBB-CAB-C3B	2.54	124.79	119.95
8	L	802	PC9	O3-C11-C12	2.55	119.32	111.90
5	M	313	BCL	CHC-C1C-NC	2.66	128.18	124.51
11	M	800	CDL	OA8-CA7-C31	2.66	119.63	111.90
5	M	313	BCL	CHD-C4C-NC	2.70	128.07	125.08
5	M	311	BCL	CMB-C2B-C3B	2.78	130.04	124.89
5	M	311	BCL	C5-C3-C2	2.81	126.85	121.10
5	M	311	BCL	C1-O2A-CGA	2.81	123.51	116.77
5	L	314	BCL	OBB-CAB-C3B	2.81	125.30	119.95
14	H	801	PC7	C3-C2-C1	2.99	118.59	111.86
6	L	402	BPH	CAC-C3C-C4C	2.99	120.35	112.67
11	M	800	CDL	OB8-CB7-C71	3.06	120.80	111.90
7	L	502	U10	C35-C34-C36	3.18	120.81	115.29
5	L	314	BCL	CAA-CBA-CGA	3.32	123.36	113.35
5	L	312	BCL	CMB-C2B-C3B	3.59	131.55	124.89
5	M	313	BCL	CMB-C2B-C3B	3.70	131.76	124.89
6	M	401	BPH	O2D-CGD-CBD	3.76	118.02	111.30
6	L	402	BPH	O2D-CGD-CBD	3.86	118.19	111.30
5	L	314	BCL	O2D-CGD-CBD	3.93	118.32	111.30
7	L	502	U10	C25-C24-C26	3.95	122.14	115.29
8	L	802	PC9	O2-C31-C32	3.97	119.79	111.55
6	M	401	BPH	CAC-C3C-C4C	3.97	122.87	112.67
14	H	801	PC7	O2-C31-C32	4.28	120.45	111.55
7	L	502	U10	C30-C29-C31	4.30	122.76	115.29
7	M	501	U10	C30-C29-C31	4.44	122.99	115.29
6	L	402	BPH	C3C-C4C-NC	4.47	112.18	107.97

Continued on next page...

Continued from previous page...

Mol	Chain	Res	Type	Atoms	Z	Observed(°)	Ideal(°)
11	M	800	CDL	OB6-CB5-C51	4.79	121.50	111.55
11	M	800	CDL	OA6-CA5-C11	6.04	124.10	111.55

There are no chirality outliers.

There are no torsion outliers.

There are no ring outliers.

18 monomers are involved in 80 short contacts:

Mol	Chain	Res	Type	Clashes	Symm-Clashes
15	H	708	GOL	2	0
13	H	709	HTO	1	0
14	H	801	PC7	8	0
9	H	901	LDA	3	0
9	H	904	LDA	2	0
9	H	905	LDA	2	0
5	L	312	BCL	3	0
5	L	314	BCL	3	0
7	L	502	U10	12	0
4	L	703	PO4	1	0
8	L	802	PC9	36	0
9	L	906	LDA	1	0
5	M	311	BCL	11	0
5	M	313	BCL	10	0
6	M	401	BPH	11	0
7	M	501	U10	1	0
11	M	800	CDL	2	0
9	M	907	LDA	1	0

5.7 Other polymers [i](#)

There are no such residues in this entry.

5.8 Polymer linkage issues [i](#)

There are no chain breaks in this entry.

6 Fit of model and data ⓘ

6.1 Protein, DNA and RNA chains ⓘ

In the following table, the column labelled ‘#RSRZ> 2’ contains the number (and percentage) of RSRZ outliers, followed by percent RSRZ outliers for the chain as percentile scores relative to all X-ray entries and entries of similar resolution. The OWAB column contains the minimum, median, 95th percentile and maximum values of the occupancy-weighted average B-factor per residue. The column labelled ‘Q< 0.9’ lists the number of (and percentage) of residues with an average occupancy less than 0.9.

Mol	Chain	Analysed	<RSRZ>	#RSRZ>2	OWAB(Å ²)	Q<0.9
1	L	281/281 (100%)	0.15	24 (8%) 11 12	38, 51, 61, 72	0
2	M	302/307 (98%)	0.36	31 (10%) 7 7	40, 50, 60, 76	0
3	H	244/260 (93%)	0.03	9 (3%) 42 45	42, 49, 60, 87	1 (0%)
All	All	827/848 (97%)	0.19	64 (7%) 14 15	38, 50, 61, 87	1 (0%)

All (64) RSRZ outliers are listed below:

Mol	Chain	Res	Type	RSRZ
3	H	9	ASN	8.8
3	H	8	GLY	8.5
3	H	251	VAL	7.7
3	H	10	PHE	7.2
3	H	250	SER	6.4
1	L	279	ILE	6.2
2	M	80	TRP	5.3
1	L	281	GLY	5.2
2	M	83	ALA	4.5
1	L	55	LEU	4.4
1	L	81	ALA	4.2
1	L	277	GLY	4.2
1	L	51	TRP	4.1
2	M	82	PRO	4.0
1	L	280	ASN	4.0
3	H	249	LYS	4.0
3	H	118[A]	ARG	3.9
2	M	75	TRP	3.8
2	M	1	ALA	3.7
2	M	171	TRP	3.6
1	L	59	TRP	3.5
2	M	114	LEU	3.4
2	M	26	LEU	3.3

Continued on next page...

Continued from previous page...

Mol	Chain	Res	Type	RSRZ
2	M	76	TYR	3.3
2	M	98	ALA	3.3
2	M	2[A]	GLU	3.2
2	M	109	LEU	3.2
2	M	79	GLY	3.0
1	L	276[A]	PRO	3.0
3	H	52	ASN	2.9
1	L	278	GLY	2.8
2	M	101	TYR	2.8
2	M	174	ALA	2.7
1	L	270	PRO	2.7
2	M	32	VAL	2.7
2	M	216	PHE	2.7
1	L	73	TYR	2.7
1	L	236	LEU	2.7
2	M	81	ASN	2.7
2	M	102	GLY	2.6
1	L	80	LEU	2.6
2	M	103	LEU	2.5
2	M	104	SER	2.5
1	L	269	LEU	2.4
1	L	275	ILE	2.4
1	L	185	LEU	2.4
2	M	72	ILE	2.4
2	M	105	PHE	2.4
1	L	54	VAL	2.4
2	M	265	ILE	2.4
1	L	271	TRP	2.4
2	M	100	GLU	2.3
1	L	202	LYS	2.3
3	H	158	LEU	2.3
2	M	57	VAL	2.2
2	M	52	LEU	2.2
1	L	88	ILE	2.2
2	M	54	SER	2.2
1	L	265	TRP	2.1
2	M	28	ASN	2.1
2	M	27	ALA	2.1
1	L	268	LYS	2.1
1	L	272	TRP	2.0
2	M	77	GLN	2.0

6.2 Non-standard residues in protein, DNA, RNA chains [i](#)

There are no non-standard protein/DNA/RNA residues in this entry.

6.3 Carbohydrates [i](#)

There are no carbohydrates in this entry.

6.4 Ligands [i](#)

In the following table, the Atoms column lists the number of modelled atoms in the group and the number defined in the chemical component dictionary. LLDF column lists the quality of electron density of the group with respect to its neighbouring residues in protein, DNA or RNA chains. The B-factors column lists the minimum, median, 95th percentile and maximum values of B factors of atoms in the group. The column labelled 'Q< 0.9' lists the number of atoms with occupancy less than 0.9.

Mol	Type	Chain	Res	Atoms	RSCC	RSR	LLDF	B-factors(Å ²)	Q<0.9
15	GOL	H	708	6/6	0.77	0.89	26.55	46,46,47,49	6
14	PC7	H	801	52/52	0.60	0.81	17.95	26,68,76,78	52
9	LDA	H	905	16/16	0.20	0.75	14.46	61,69,78,78	16
9	LDA	M	907	16/16	0.71	0.42	12.43	56,61,66,67	16
15	GOL	H	705	6/6	0.84	0.30	9.63	58,69,70,72	0
9	LDA	M	920	16/16	0.56	0.48	9.21	59,74,88,88	16
7	U10	L	502	48/63	0.78	0.65	8.77	34,48,60,62	48
8	PC9	L	802	54/54	0.55	0.61	6.57	57,66,75,79	54
11	CDL	M	800	81/100	0.68	0.40	6.19	43,71,83,85	81
15	GOL	H	706	6/6	0.87	0.29	4.69	74,76,77,77	0
9	LDA	H	901	16/16	0.89	0.28	3.50	60,65,69,71	0
9	LDA	L	906	16/16	0.68	0.35	2.78	54,56,59,60	16
4	PO4	L	703	5/5	0.90	0.39	2.52	70,72,73,75	5
7	U10	M	501	48/63	0.89	0.22	1.05	43,54,77,80	0
6	BPH	M	401	65/65	0.91	0.18	0.24	45,51,92,93	0
6	BPH	L	402	65/65	0.95	0.15	0.19	35,47,52,53	0
5	BCL	L	314	66/66	0.94	0.17	0.17	38,47,62,66	0
5	BCL	L	312	66/66	0.95	0.15	0.09	41,46,58,61	0
5	BCL	M	311	66/66	0.95	0.17	0.02	42,51,96,97	0
4	PO4	M	702	5/5	0.85	0.22	-0.00	66,67,68,68	5
5	BCL	M	313	66/66	0.97	0.15	-0.28	38,46,70,79	0
10	FE	M	500	1/1	1.00	0.16	-0.56	49,49,49,49	0
12	K	H	700	1/1	0.98	0.07	-3.35	54,54,54,54	0
4	PO4	M	701	5/5	0.97	0.30	-	57,59,62,63	0
9	LDA	H	904	16/16	0.31	0.61	-	65,68,72,72	16

Continued on next page...

Continued from previous page...

Mol	Type	Chain	Res	Atoms	RSCC	RSR	LLDF	B-factors(\AA^2)	Q<0.9
13	HTO	H	709	10/10	0.67	0.26	-	50,56,56,58	10
9	LDA	L	902	16/16	0.66	0.50	-	68,73,77,80	16
4	PO4	M	704	5/5	0.85	0.34	-	76,76,77,78	5
9	LDA	H	903	16/16	0.44	0.48	-	63,65,74,75	16

6.5 Other polymers [i](#)

There are no such residues in this entry.