



# Full wwPDB X-ray Structure Validation Report ⓘ

Oct 23, 2017 – 02:34 PM EDT

PDB ID : 3HII  
Title : Crystal structure of human diamine oxidase in complex with the inhibitor pentamidine  
Authors : McGrath, A.P.; Guss, J.M.  
Deposited on : unknown  
Resolution : 2.15 Å(reported)

This is a Full wwPDB X-ray Structure Validation Report for a publicly released PDB entry.

We welcome your comments at [validation@mail.wwpdb.org](mailto:validation@mail.wwpdb.org)

A user guide is available at

<http://wwpdb.org/validation/2016/XrayValidationReportHelp>

with specific help available everywhere you see the ⓘ symbol.

---

The following versions of software and data (see [references ⓘ](#)) were used in the production of this report:

MolProbity : 4.02b-467  
Mogul : 1.7.2 (RC1), CSD as538be (2017)  
Xtriage (Phenix) : 1.9-1692  
EDS : rb-20030345  
Percentile statistics : 20161228.v01 (using entries in the PDB archive December 28th 2016)  
Refmac : 5.8.0135  
CCP4 : 6.5.0  
Ideal geometry (proteins) : Engh & Huber (2001)  
Ideal geometry (DNA, RNA) : Parkinson et al. (1996)  
Validation Pipeline (wwPDB-VP) : rb-20030345

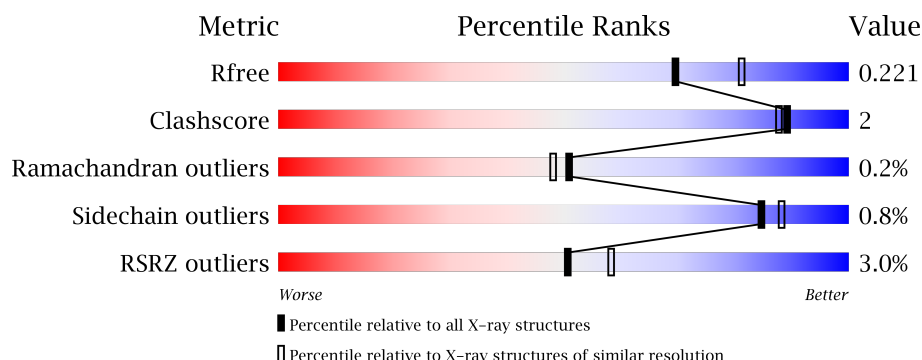
# 1 Overall quality at a glance

The following experimental techniques were used to determine the structure:

## *X-RAY DIFFRACTION*

The reported resolution of this entry is 2.15 Å.

Percentile scores (ranging between 0-100) for global validation metrics of the entry are shown in the following graphic. The table shows the number of entries on which the scores are based.



Metric	Whole archive (#Entries)	Similar resolution (#Entries, resolution range(Å))
$R_{free}$	100719	1915 (2.16-2.12)
Clashscore	112137	2047 (2.16-2.12)
Ramachandran outliers	110173	2020 (2.16-2.12)
Sidechain outliers	110143	2019 (2.16-2.12)
RSRZ outliers	101464	1921 (2.16-2.12)

The table below summarises the geometric issues observed across the polymeric chains and their fit to the electron density. The red, orange, yellow and green segments on the lower bar indicate the fraction of residues that contain outliers for  $\geq 3$ , 2, 1 and 0 types of geometric quality criteria. A grey segment represents the fraction of residues that are not modelled. The numeric value for each fraction is indicated below the corresponding segment, with a dot representing fractions  $\leq 5\%$ . The upper red bar (where present) indicates the fraction of residues that have poor fit to the electron density. The numeric value is given above the bar.

Mol	Chain	Length	Quality of chain
1	A	731	<div> <div>3%</div> <div>92%</div> <div>6%</div> </div>
1	B	731	<div> <div>2%</div> <div>92%</div> <div>5%</div> </div>

The following table lists non-polymeric compounds, carbohydrate monomers and non-standard residues in protein, DNA, RNA chains that are outliers for geometric or electron-density-fit criteria:

Mol	Type	Chain	Res	Chirality	Geometry	Clashes	Electron density
5	PNT	A	901	-	-	-	X
5	PNT	B	901	-	-	-	X

## 2 Entry composition [i](#)

There are 8 unique types of molecules in this entry. The entry contains 12686 atoms, of which 0 are hydrogens and 0 are deuteriums.

In the tables below, the ZeroOcc column contains the number of atoms modelled with zero occupancy, the AltConf column contains the number of residues with at least one atom in alternate conformation and the Trace column contains the number of residues modelled with at most 2 atoms.

- Molecule 1 is a protein called Amiloride-sensitive amine oxidase.

Mol	Chain	Residues	Atoms					ZeroOcc	AltConf	Trace
1	A	715	Total	C	N	O	S	0	19	0
			5807	3750	994	1043	20			
1	B	710	Total	C	N	O	S	0	12	0
			5722	3699	977	1027	19			

There are 2 discrepancies between the modelled and reference sequences:

Chain	Residue	Modelled	Actual	Comment	Reference
A	21	ARG	PRO	ENGINEERED	UNP P19801
B	21	ARG	PRO	ENGINEERED	UNP P19801

- Molecule 2 is COPPER (II) ION (three-letter code: CU) (formula: Cu).

Mol	Chain	Residues	Atoms		ZeroOcc	AltConf
2	B	1	Total	Cu	0	0
			1	1		
2	A	1	Total	Cu	0	0
			1	1		

- Molecule 3 is CALCIUM ION (three-letter code: CA) (formula: Ca).

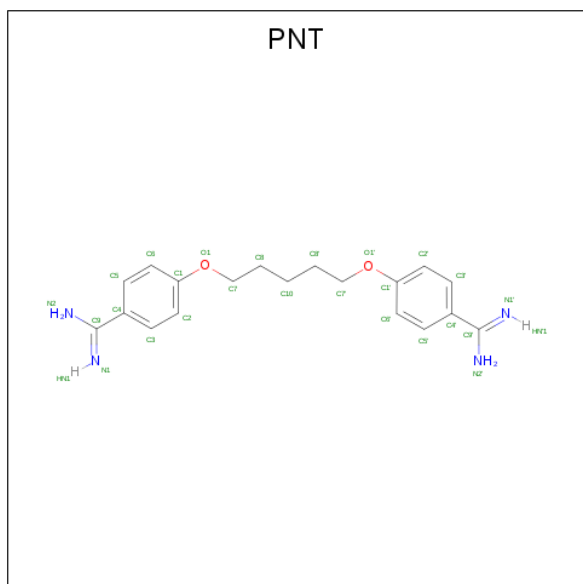
Mol	Chain	Residues	Atoms		ZeroOcc	AltConf
3	B	2	Total	Ca	0	0
			2	2		
3	A	2	Total	Ca	0	0
			2	2		

- Molecule 4 is GLYCEROL (three-letter code: GOL) (formula: C<sub>3</sub>H<sub>8</sub>O<sub>3</sub>).



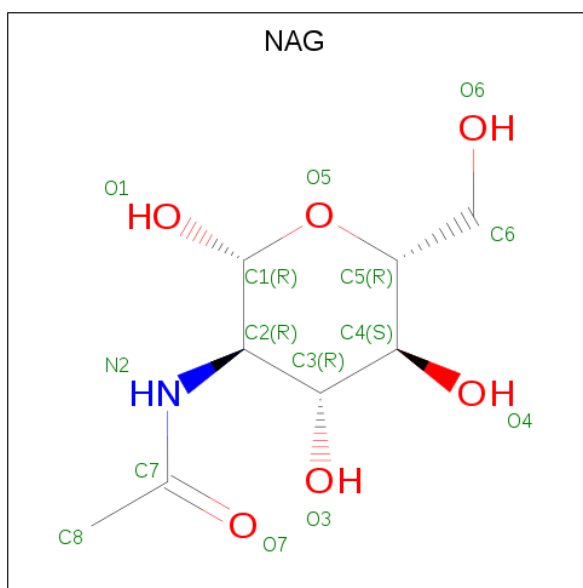
Mol	Chain	Residues	Atoms			ZeroOcc	AltConf
4	A	1	Total	C	O	0	0
			6	3	3		

- Molecule 5 is 1,5-BIS(4-AMIDINOPHENOXY)PENTANE (three-letter code: PNT) (formula:  $C_{19}H_{24}N_4O_2$ ).



Mol	Chain	Residues	Atoms				ZeroOcc	AltConf
5	A	1	Total	C	N	O	0	0
			25	19	4	2		
5	B	1	Total	C	N	O	0	0
			25	19	4	2		

- Molecule 6 is N-ACETYL-D-GLUCOSAMINE (three-letter code: NAG) (formula:  $C_8H_{15}NO_6$ ).



Mol	Chain	Residues	Atoms				ZeroOcc	AltConf
6	A	1	Total	C	N	O	0	0
			14	8	1	5		
6	A	1	Total	C	N	O	0	0
			14	8	1	5		
6	A	1	Total	C	N	O	0	0
			14	8	1	5		
6	A	1	Total	C	N	O	0	0
			14	8	1	5		
6	A	1	Total	C	N	O	0	0
			14	8	1	5		
6	B	1	Total	C	N	O	0	0
			14	8	1	5		
6	B	1	Total	C	N	O	0	0
			14	8	1	5		
6	B	1	Total	C	N	O	0	0
			14	8	1	5		
6	B	1	Total	C	N	O	0	0
			14	8	1	5		
6	B	1	Total	C	N	O	0	0
			14	8	1	5		

- Molecule 7 is BETA-D-MANNOSE (three-letter code: BMA) (formula:  $C_6H_{12}O_6$ ).



Mol	Chain	Residues	Atoms			ZeroOcc	AltConf
7	A	1	Total	C	O	0	0
			11	6	5		

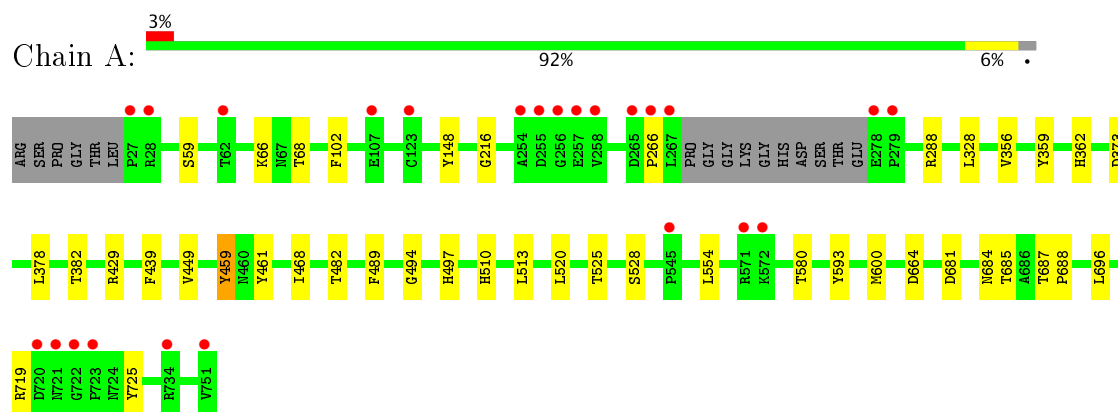
- Molecule 8 is water.

Mol	Chain	Residues	Atoms		ZeroOcc	AltConf
8	A	460	Total	O	0	0
			460	460		
8	B	456	Total	O	0	0
			456	456		

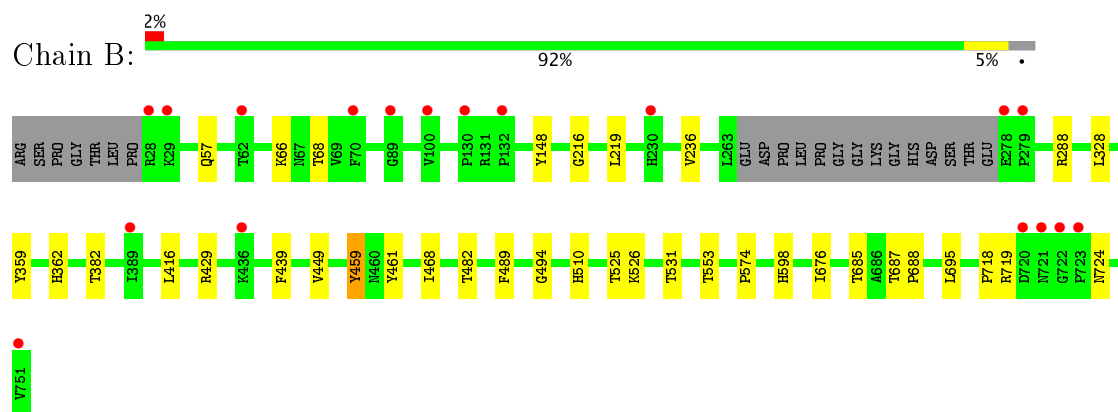
### 3 Residue-property plots [i](#)

These plots are drawn for all protein, RNA and DNA chains in the entry. The first graphic for a chain summarises the proportions of the various outlier classes displayed in the second graphic. The second graphic shows the sequence view annotated by issues in geometry and electron density. Residues are color-coded according to the number of geometric quality criteria for which they contain at least one outlier: green = 0, yellow = 1, orange = 2 and red = 3 or more. A red dot above a residue indicates a poor fit to the electron density ( $RSRZ > 2$ ). Stretches of 2 or more consecutive residues without any outlier are shown as a green connector. Residues present in the sample, but not in the model, are shown in grey.

- Molecule 1: Amiloride-sensitive amine oxidase



- Molecule 1: Amiloride-sensitive amine oxidase





## 4 Data and refinement statistics

Property	Value	Source
Space group	P 21 21 21	Depositor
Cell constants a, b, c, $\alpha$ , $\beta$ , $\gamma$	92.45Å 94.69Å 196.28Å 90.00° 90.00° 90.00°	Depositor
Resolution (Å)	25.84 – 2.15 25.84 – 2.15	Depositor EDS
% Data completeness (in resolution range)	95.0 (25.84-2.15) 95.0 (25.84-2.15)	Depositor EDS
$R_{merge}$	0.10	Depositor
$R_{sym}$	(Not available)	Depositor
$\langle I/\sigma(I) \rangle$ <sup>1</sup>	2.55 (at 2.15Å)	Xtriage
Refinement program	REFMAC	Depositor
R, $R_{free}$	0.182 , 0.221 0.183 , 0.221	Depositor DCC
$R_{free}$ test set	4554 reflections (5.35%)	DCC
Wilson B-factor (Å <sup>2</sup> )	27.1	Xtriage
Anisotropy	0.086	Xtriage
Bulk solvent $k_{sol}$ (e/Å <sup>3</sup> ), $B_{sol}$ (Å <sup>2</sup> )	0.39 , 56.8	EDS
L-test for twinning <sup>2</sup>	$\langle  L  \rangle = 0.50$ , $\langle L^2 \rangle = 0.33$	Xtriage
Estimated twinning fraction	0.008 for k,h,-l	Xtriage
$F_o, F_c$ correlation	0.95	EDS
Total number of atoms	12686	wwPDB-VP
Average B, all atoms (Å <sup>2</sup> )	26.0	wwPDB-VP

Xtriage's analysis on translational NCS is as follows: *The largest off-origin peak in the Patterson function is 3.53% of the height of the origin peak. No significant pseudotranslation is detected.*

<sup>1</sup>Intensities estimated from amplitudes.

<sup>2</sup>Theoretical values of  $\langle |L| \rangle$ ,  $\langle L^2 \rangle$  for acentric reflections are 0.5, 0.333 respectively for untwinned datasets, and 0.375, 0.2 for perfectly twinned datasets.

## 5 Model quality

### 5.1 Standard geometry

Bond lengths and bond angles in the following residue types are not validated in this section: GOL, BMA, NAG, CA, PNT, TPQ, CU

The Z score for a bond length (or angle) is the number of standard deviations the observed value is removed from the expected value. A bond length (or angle) with  $|Z| > 5$  is considered an outlier worth inspection. RMSZ is the root-mean-square of all Z scores of the bond lengths (or angles).

Mol	Chain	Bond lengths		Bond angles	
		RMSZ	# Z  >5	RMSZ	# Z  >5
1	A	0.42	0/6033	0.58	0/8241
1	B	0.41	0/5934	0.57	0/8109
All	All	0.42	0/11967	0.57	0/16350

There are no bond length outliers.

There are no bond angle outliers.

There are no chirality outliers.

There are no planarity outliers.

### 5.2 Too-close contacts

In the following table, the Non-H and H(model) columns list the number of non-hydrogen atoms and hydrogen atoms in the chain respectively. The H(added) column lists the number of hydrogen atoms added and optimized by MolProbity. The Clashes column lists the number of clashes within the asymmetric unit, whereas Symm-Clashes lists symmetry related clashes.

Mol	Chain	Non-H	H(model)	H(added)	Clashes	Symm-Clashes
1	A	5807	0	5489	24	0
1	B	5722	0	5393	29	0
2	A	1	0	0	0	0
2	B	1	0	0	0	0
3	A	2	0	0	0	0
3	B	2	0	0	0	0
4	A	6	0	8	0	0
5	A	25	0	22	3	0
5	B	25	0	22	5	0
6	A	84	0	74	0	0
6	B	84	0	75	0	0

*Continued on next page...*

*Continued from previous page...*

Mol	Chain	Non-H	H(model)	H(added)	Clashes	Symm-Clashes
7	A	11	0	10	0	0
8	A	460	0	0	1	0
8	B	456	0	0	0	0
All	All	12686	0	11093	51	0

The all-atom clashscore is defined as the number of clashes found per 1000 atoms (including hydrogen atoms). The all-atom clashscore for this structure is 2.

All (51) close contacts within the same asymmetric unit are listed below, sorted by their clash magnitude.

Atom-1	Atom-2	Interatomic distance (Å)	Clash overlap (Å)
1:B:449[B]:VAL:HG21	1:B:468:ILE:CG2	2.07	0.84
1:B:328:LEU:HD21	1:B:382:THR:HG21	1.69	0.73
1:A:328:LEU:HD21	1:A:382:THR:HG21	1.69	0.72
1:A:459:TYR:CD1	5:A:901:PNT:H72	2.26	0.70
1:A:459:TYR:CG	5:A:901:PNT:H72	2.26	0.70
1:B:459:TYR:CE1	5:B:901:PNT:H72	2.31	0.66
1:B:449[B]:VAL:HG21	1:B:468:ILE:HG22	1.78	0.63
1:B:461:TPQ:H6	1:B:482:THR:O	2.01	0.61
1:A:449[B]:VAL:HG21	1:A:468:ILE:CG2	2.32	0.60
1:B:449[B]:VAL:CG2	1:B:468:ILE:CG2	2.81	0.58
1:B:718:PRO:HA	1:B:724:ASN:HD22	1.69	0.58
1:B:598[A]:HIS:CE1	1:B:695:LEU:HD13	2.39	0.56
1:B:449[B]:VAL:HG21	1:B:468:ILE:HG23	1.87	0.56
1:B:57:GLN:O	1:B:68[B]:THR:HG22	2.05	0.56
1:B:66:LYS:HE3	1:B:68[B]:THR:HG21	1.90	0.53
1:A:66:LYS:HE3	1:A:68[B]:THR:HG21	1.93	0.51
1:B:359:TYR:CD1	1:B:510:HIS:HB3	2.46	0.51
1:B:449[B]:VAL:CG2	1:B:468:ILE:HG23	2.40	0.51
1:A:719[B]:ARG:HD2	1:A:725:TYR:HB2	1.92	0.50
1:B:459:TYR:CZ	5:B:901:PNT:H72	2.47	0.50
1:A:600[A]:MET:HE2	8:A:1124:HOH:O	2.13	0.48
1:B:718:PRO:HA	1:B:724:ASN:ND2	2.29	0.47
1:B:219:LEU:CD2	1:B:236:VAL:HG22	2.45	0.47
1:A:461:TPQ:H6	1:A:482:THR:O	2.15	0.47
1:A:68[A]:THR:HG22	1:A:102:PHE:HB2	1.96	0.46
1:A:497:HIS:CE1	1:B:553:THR:HG22	2.49	0.46
1:B:449[B]:VAL:CG2	1:B:468:ILE:HG22	2.45	0.46
1:A:356:VAL:HG22	1:A:513:LEU:HB2	1.96	0.46
1:A:373:ASP:HB3	1:A:378:LEU:HD13	1.98	0.46
1:B:216:GLY:HA2	1:B:489:PHE:CG	2.51	0.45

*Continued on next page...*

Continued from previous page...

Atom-1	Atom-2	Interatomic distance (Å)	Clash overlap (Å)
1:A:362:HIS:CG	1:A:494:GLY:HA2	2.52	0.45
1:A:59:SER:O	1:A:66:LYS:NZ	2.50	0.44
1:A:148:TYR:OH	5:A:901:PNT:C8	2.66	0.44
1:A:681:ASP:OD1	1:A:685[B]:THR:HG22	2.18	0.43
1:A:216:GLY:HA2	1:A:489:PHE:CG	2.54	0.43
1:A:449[B]:VAL:CG2	1:A:468:ILE:CG2	2.96	0.43
1:A:359:TYR:CD1	1:A:510:HIS:HB3	2.53	0.43
1:B:362:HIS:CG	1:B:494:GLY:HA2	2.54	0.42
1:B:459:TYR:CD1	5:B:901:PNT:H72	2.53	0.42
1:B:461:TPQ:O5	1:B:685[B]:THR:HG21	2.19	0.42
1:A:520:LEU:HD21	1:A:696:LEU:HD13	2.02	0.42
1:A:554:LEU:HD13	1:B:676:ILE:HD13	2.02	0.42
1:A:687:THR:N	1:A:688:PRO:CD	2.83	0.42
1:B:148:TYR:OH	5:B:901:PNT:C8	2.67	0.41
1:B:531:THR:HG21	1:B:574:PRO:HG2	2.02	0.41
1:B:718:PRO:O	1:B:719:ARG:NH1	2.53	0.41
1:A:528[B]:SER:OG	1:A:580:THR:OG1	2.34	0.41
1:B:687:THR:N	1:B:688:PRO:CD	2.84	0.41
1:B:148:TYR:OH	5:B:901:PNT:H81	2.21	0.41
1:A:525[A]:THR:HG22	1:A:664:ASP:HB2	2.03	0.40
1:B:525[B]:THR:HG23	1:B:526:LYS:HG3	2.03	0.40

There are no symmetry-related clashes.

## 5.3 Torsion angles [i](#)

### 5.3.1 Protein backbone [i](#)

In the following table, the Percentiles column shows the percent Ramachandran outliers of the chain as a percentile score with respect to all X-ray entries followed by that with respect to entries of similar resolution.

The Analysed column shows the number of residues for which the backbone conformation was analysed, and the total number of residues.

Mol	Chain	Analysed	Favoured	Allowed	Outliers	Percentiles	
1	A	729/731 (100%)	709 (97%)	18 (2%)	2 (0%)	44	39
1	B	717/731 (98%)	697 (97%)	19 (3%)	1 (0%)	55	54
All	All	1446/1462 (99%)	1406 (97%)	37 (3%)	3 (0%)	51	48

All (3) Ramachandran outliers are listed below:

Mol	Chain	Res	Type
1	A	459	TYR
1	B	459	TYR
1	A	266	PRO

### 5.3.2 Protein sidechains ⓘ

In the following table, the Percentiles column shows the percent sidechain outliers of the chain as a percentile score with respect to all X-ray entries followed by that with respect to entries of similar resolution.

The Analysed column shows the number of residues for which the sidechain conformation was analysed, and the total number of residues.

Mol	Chain	Analysed	Rotameric	Outliers	Percentiles	
1	A	612/634 (96%)	607 (99%)	5 (1%)	85	88
1	B	603/634 (95%)	599 (99%)	4 (1%)	87	90
All	All	1215/1268 (96%)	1206 (99%)	9 (1%)	85	90

All (9) residues with a non-rotameric sidechain are listed below:

Mol	Chain	Res	Type
1	A	288	ARG
1	A	429	ARG
1	A	439	PHE
1	A	593	TYR
1	A	684	ASN
1	B	288	ARG
1	B	416	LEU
1	B	429	ARG
1	B	439	PHE

Some sidechains can be flipped to improve hydrogen bonding and reduce clashes. All (3) such sidechains are listed below:

Mol	Chain	Res	Type
1	B	81	HIS
1	B	175	GLN
1	B	724	ASN

### 5.3.3 RNA ⓘ

There are no RNA molecules in this entry.

## 5.4 Non-standard residues in protein, DNA, RNA chains ⓘ

2 non-standard protein/DNA/RNA residues are modelled in this entry.

In the following table, the Counts columns list the number of bonds (or angles) for which Mogul statistics could be retrieved, the number of bonds (or angles) that are observed in the model and the number of bonds (or angles) that are defined in the Chemical Component Dictionary. The Link column lists molecule types, if any, to which the group is linked. The Z score for a bond length (or angle) is the number of standard deviations the observed value is removed from the expected value. A bond length (or angle) with  $|Z| > 2$  is considered an outlier worth inspection. RMSZ is the root-mean-square of all Z scores of the bond lengths (or angles).

Mol	Type	Chain	Res	Link	Bond lengths			Bond angles		
					Counts	RMSZ	$\# Z  > 2$	Counts	RMSZ	$\# Z  > 2$
1	TPQ	A	461	1,2	14,14,15	1.61	3 (21%)	17,19,21	1.31	2 (11%)
1	TPQ	B	461	1,2	14,14,15	1.63	3 (21%)	17,19,21	1.54	2 (11%)

In the following table, the Chirals column lists the number of chiral outliers, the number of chiral centers analysed, the number of these observed in the model and the number defined in the Chemical Component Dictionary. Similar counts are reported in the Torsion and Rings columns. '-' means no outliers of that kind were identified.

Mol	Type	Chain	Res	Link	Chirals	Torsions	Rings
1	TPQ	A	461	1,2	-	0/4/22/24	0/1/1/1
1	TPQ	B	461	1,2	-	0/4/22/24	0/1/1/1

All (6) bond length outliers are listed below:

Mol	Chain	Res	Type	Atoms	Z	Observed(Å)	Ideal(Å)
1	A	461	TPQ	O4-C4	-3.68	1.24	1.33
1	B	461	TPQ	O4-C4	-3.13	1.25	1.33
1	A	461	TPQ	C6-C1	2.02	1.40	1.34
1	B	461	TPQ	CA-C	2.44	1.53	1.50
1	A	461	TPQ	C3-C4	2.99	1.40	1.35
1	B	461	TPQ	C3-C4	3.13	1.40	1.35

All (4) bond angle outliers are listed below:

Mol	Chain	Res	Type	Atoms	Z	Observed(°)	Ideal(°)
1	B	461	TPQ	CB-CA-C	-4.99	101.79	111.41

*Continued on next page...*

*Continued from previous page...*

Mol	Chain	Res	Type	Atoms	Z	Observed(°)	Ideal(°)
1	A	461	TPQ	CB-CA-C	-4.07	103.57	111.41
1	B	461	TPQ	C3-C4-C5	-2.08	119.05	121.24
1	A	461	TPQ	C6-C1-C2	2.32	120.41	118.54

There are no chirality outliers.

There are no torsion outliers.

There are no ring outliers.

2 monomers are involved in 3 short contacts:

Mol	Chain	Res	Type	Clashes	Symm-Clashes
1	A	461	TPQ	1	0
1	B	461	TPQ	2	0

## 5.5 Carbohydrates [i](#)

There are no carbohydrates in this entry.

## 5.6 Ligand geometry [i](#)

Of 22 ligands modelled in this entry, 6 are monoatomic - leaving 16 for Mogul analysis.

In the following table, the Counts columns list the number of bonds (or angles) for which Mogul statistics could be retrieved, the number of bonds (or angles) that are observed in the model and the number of bonds (or angles) that are defined in the Chemical Component Dictionary. The Link column lists molecule types, if any, to which the group is linked. The Z score for a bond length (or angle) is the number of standard deviations the observed value is removed from the expected value. A bond length (or angle) with  $|Z| > 2$  is considered an outlier worth inspection. RMSZ is the root-mean-square of all Z scores of the bond lengths (or angles).

Mol	Type	Chain	Res	Link	Bond lengths			Bond angles		
					Counts	RMSZ	$\# Z  > 2$	Counts	RMSZ	$\# Z  > 2$
6	NAG	A	1101	1,6	14,14,15	0.49	0	15,19,21	0.81	0
6	NAG	A	1102	7,6	14,14,15	0.66	0	15,19,21	1.34	3 (20%)
7	BMA	A	1103	6	11,11,12	0.79	0	13,15,17	0.82	1 (7%)
6	NAG	A	5381	1,6	14,14,15	0.52	0	15,19,21	0.99	1 (6%)
6	NAG	A	5382	6	14,14,15	0.43	0	15,19,21	1.22	1 (6%)
6	NAG	A	7451	1,6	14,14,15	0.65	0	15,19,21	1.05	1 (6%)
6	NAG	A	7452	6	14,14,15	0.55	0	15,19,21	0.98	0
4	GOL	A	804	-	5,5,5	0.46	0	5,5,5	0.28	0

Mol	Type	Chain	Res	Link	Bond lengths			Bond angles		
					Counts	RMSZ	# Z  > 2	Counts	RMSZ	# Z  > 2
5	PNT	A	901	-	26,26,26	0.53	0	29,33,33	0.89	1 (3%)
6	NAG	B	1101	1,6	14,14,15	0.61	0	15,19,21	1.13	1 (6%)
6	NAG	B	1102	6	14,14,15	0.45	0	15,19,21	0.68	0
6	NAG	B	5381	1,6	14,14,15	0.53	0	15,19,21	1.14	1 (6%)
6	NAG	B	5382	6	14,14,15	0.65	0	15,19,21	1.00	1 (6%)
6	NAG	B	7451	1,6	14,14,15	0.63	0	15,19,21	0.94	1 (6%)
6	NAG	B	7452	6	14,14,15	0.62	0	15,19,21	0.80	1 (6%)
5	PNT	B	901	-	26,26,26	0.61	1 (3%)	29,33,33	1.58	2 (6%)

In the following table, the Chirals column lists the number of chiral outliers, the number of chiral centers analysed, the number of these observed in the model and the number defined in the Chemical Component Dictionary. Similar counts are reported in the Torsion and Rings columns. '-' means no outliers of that kind were identified.

Mol	Type	Chain	Res	Link	Chirals	Torsions	Rings
6	NAG	A	1101	1,6	-	0/6/23/26	0/1/1/1
6	NAG	A	1102	7,6	-	0/6/23/26	0/1/1/1
7	BMA	A	1103	6	-	0/2/19/22	0/1/1/1
6	NAG	A	5381	1,6	-	0/6/23/26	0/1/1/1
6	NAG	A	5382	6	-	0/6/23/26	0/1/1/1
6	NAG	A	7451	1,6	-	0/6/23/26	0/1/1/1
6	NAG	A	7452	6	-	0/6/23/26	0/1/1/1
4	GOL	A	804	-	-	0/4/4/4	0/0/0/0
5	PNT	A	901	-	-	0/18/18/18	0/2/2/2
6	NAG	B	1101	1,6	-	0/6/23/26	0/1/1/1
6	NAG	B	1102	6	-	0/6/23/26	0/1/1/1
6	NAG	B	5381	1,6	-	0/6/23/26	0/1/1/1
6	NAG	B	5382	6	-	0/6/23/26	0/1/1/1
6	NAG	B	7451	1,6	-	0/6/23/26	0/1/1/1
6	NAG	B	7452	6	-	0/6/23/26	0/1/1/1
5	PNT	B	901	-	-	0/18/18/18	0/2/2/2

All (1) bond length outliers are listed below:

Mol	Chain	Res	Type	Atoms	Z	Observed(Å)	Ideal(Å)
5	B	901	PNT	C4'-C9'	2.09	1.50	1.47

All (15) bond angle outliers are listed below:



Mol	Chain	Res	Type	Atoms	Z	Observed(°)	Ideal(°)
6	A	5381	NAG	O5-C1-C2	-2.58	107.88	111.47
6	A	1102	NAG	O5-C1-C2	-2.21	108.40	111.47
6	B	7452	NAG	C2-N2-C7	-2.13	119.83	122.94
6	A	1102	NAG	O4-C4-C3	-2.10	105.80	110.36
7	A	1103	BMA	O2-C2-C1	2.01	113.27	109.18
6	B	7451	NAG	C1-O5-C5	2.20	115.20	112.17
6	B	1101	NAG	C4-C3-C2	2.41	114.55	111.02
6	B	5382	NAG	C1-O5-C5	2.48	115.58	112.17
6	A	7451	NAG	C1-O5-C5	2.49	115.60	112.17
5	B	901	PNT	O1-C7-C8	2.50	117.77	108.34
6	A	1102	NAG	C4-C3-C2	2.80	115.12	111.02
6	B	5381	NAG	C1-O5-C5	2.82	116.05	112.17
6	A	5382	NAG	C1-O5-C5	3.10	116.44	112.17
5	A	901	PNT	C7-O1-C1	3.20	126.39	117.90
5	B	901	PNT	C7-O1-C1	6.36	134.75	117.90

There are no chirality outliers.

There are no torsion outliers.

There are no ring outliers.

2 monomers are involved in 8 short contacts:

Mol	Chain	Res	Type	Clashes	Symm-Clashes
5	A	901	PNT	3	0
5	B	901	PNT	5	0

## 5.7 Other polymers [i](#)

There are no such residues in this entry.

## 5.8 Polymer linkage issues [i](#)

There are no chain breaks in this entry.

## 6 Fit of model and data ⓘ

### 6.1 Protein, DNA and RNA chains ⓘ

In the following table, the column labelled ‘#RSRZ> 2’ contains the number (and percentage) of RSRZ outliers, followed by percent RSRZ outliers for the chain as percentile scores relative to all X-ray entries and entries of similar resolution. The OWAB column contains the minimum, median, 95<sup>th</sup> percentile and maximum values of the occupancy-weighted average B-factor per residue. The column labelled ‘Q< 0.9’ lists the number of (and percentage) of residues with an average occupancy less than 0.9.

Mol	Chain	Analysed	<RSRZ>	#RSRZ>2		OWAB(Å <sup>2</sup> )	Q<0.9
1	A	714/731 (97%)	-0.11	24 (3%)	46 52	15, 24, 37, 52	2 (0%)
1	B	709/731 (96%)	-0.12	18 (2%)	58 64	16, 25, 36, 45	1 (0%)
All	All	1423/1462 (97%)	-0.11	42 (2%)	51 58	15, 25, 36, 52	3 (0%)

All (42) RSRZ outliers are listed below:

Mol	Chain	Res	Type	RSRZ
1	A	27	PRO	5.2
1	A	267	LEU	5.0
1	B	721	ASN	4.1
1	A	257	GLU	4.0
1	B	28	ARG	3.8
1	B	278	GLU	3.8
1	B	723	PRO	3.8
1	B	279	PRO	3.7
1	A	720	ASP	3.6
1	A	266	PRO	3.5
1	A	279	PRO	3.3
1	A	278	GLU	3.1
1	A	256	GLY	3.1
1	B	89	GLY	3.0
1	B	29	LYS	3.0
1	B	720	ASP	2.9
1	B	230	HIS	2.8
1	A	721	ASN	2.7
1	A	722	GLY	2.7
1	B	722	GLY	2.6
1	A	107	GLU	2.6
1	A	572	LYS	2.6
1	A	254	ALA	2.5
1	B	751	VAL	2.4

*Continued on next page...*

*Continued from previous page...*

Mol	Chain	Res	Type	RSRZ
1	B	130	PRO	2.4
1	A	258	VAL	2.4
1	A	723	PRO	2.3
1	A	734	ARG	2.3
1	A	123[A]	CYS	2.3
1	B	62	THR	2.3
1	A	571	ARG	2.3
1	A	751	VAL	2.3
1	A	265	ASP	2.3
1	A	28	ARG	2.3
1	A	62	THR	2.2
1	B	132	PRO	2.2
1	B	100	VAL	2.2
1	B	436	LYS	2.2
1	A	545	PRO	2.1
1	B	70	PHE	2.1
1	A	255	ASP	2.0
1	B	389	ILE	2.0

## 6.2 Non-standard residues in protein, DNA, RNA chains [i](#)

In the following table, the Atoms column lists the number of modelled atoms in the group and the number defined in the chemical component dictionary. LLDF column lists the quality of electron density of the group with respect to its neighbouring residues in protein, DNA or RNA chains. The B-factors column lists the minimum, median, 95<sup>th</sup> percentile and maximum values of B factors of atoms in the group. The column labelled 'Q< 0.9' lists the number of atoms with occupancy less than 0.9.

Mol	Type	Chain	Res	Atoms	RSCC	RSR	LLDF	B-factors(Å <sup>2</sup> )	Q<0.9
1	TPQ	B	461	14/15	0.90	0.16	-	20,24,27,27	2
1	TPQ	A	461	14/15	0.93	0.13	-	22,25,27,27	2

## 6.3 Carbohydrates [i](#)

There are no carbohydrates in this entry.

## 6.4 Ligands [i](#)

In the following table, the Atoms column lists the number of modelled atoms in the group and the number defined in the chemical component dictionary. LLDF column lists the quality of electron density of the group with respect to its neighbouring residues in protein, DNA or RNA chains.

The B-factors column lists the minimum, median, 95<sup>th</sup> percentile and maximum values of B factors of atoms in the group. The column labelled 'Q< 0.9' lists the number of atoms with occupancy less than 0.9.

Mol	Type	Chain	Res	Atoms	RSCC	RSR	LLDF	B-factors(Å <sup>2</sup> )	Q<0.9
5	PNT	A	901	25/25	0.91	0.20	2.44	27,29,30,32	25
5	PNT	B	901	25/25	0.87	0.19	2.06	24,27,28,29	25
6	NAG	B	7451	14/15	0.92	0.17	0.26	34,36,39,41	0
6	NAG	A	7451	14/15	0.92	0.17	0.15	35,38,41,46	0
4	GOL	A	804	6/6	0.97	0.07	-1.21	25,25,27,27	0
7	BMA	A	1103	11/12	0.80	0.20	-1.38	50,51,52,52	0
3	CA	B	802	1/1	0.99	0.05	-1.75	24,24,24,24	0
3	CA	A	802	1/1	0.99	0.05	-1.83	20,20,20,20	0
3	CA	B	803	1/1	0.98	0.05	-2.58	37,37,37,37	0
3	CA	A	803	1/1	1.00	0.03	-3.32	19,19,19,19	0
6	NAG	B	5381	14/15	0.92	0.19	-	30,32,35,39	0
6	NAG	A	1102	14/15	0.88	0.18	-	41,44,49,49	0
2	CU	A	801	1/1	0.99	0.04	-	21,21,21,21	0
6	NAG	A	5382	14/15	0.83	0.31	-	45,48,49,50	0
6	NAG	A	5381	14/15	0.93	0.20	-	30,33,37,41	0
6	NAG	B	1101	14/15	0.89	0.11	-	31,34,36,39	0
6	NAG	B	1102	14/15	0.85	0.21	-	38,40,44,45	0
6	NAG	A	1101	14/15	0.93	0.09	-	32,34,37,39	0
2	CU	B	801	1/1	1.00	0.04	-	19,19,19,19	0
6	NAG	B	7452	14/15	0.69	0.35	-	37,38,39,40	14
6	NAG	B	5382	14/15	0.90	0.37	-	42,45,45,46	0
6	NAG	A	7452	14/15	0.69	0.44	-	51,54,55,55	0

## 6.5 Other polymers

There are no such residues in this entry.