



Full wwPDB X-ray Structure Validation Report ⓘ

Feb 13, 2017 – 12:28 pm GMT

PDB ID : 3HLX
Title : Crystal Structure of PqqC Active Site Mutant Y175F in Complex with PQQ
Authors : Puehringer, S.; Schwarzenbacher, R.
Deposited on : 2009-05-28
Resolution : 1.30 Å(reported)

This is a Full wwPDB X-ray Structure Validation Report for a publicly released PDB entry.

We welcome your comments at validation@mail.wwpdb.org

A user guide is available at

<http://wwpdb.org/validation/2016/XrayValidationReportHelp>

with specific help available everywhere you see the ⓘ symbol.

The following versions of software and data (see [references ⓘ](#)) were used in the production of this report:

MolProbity : 4.02b-467
Mogul : 1.7.2 (RC1), CSD as538be (2017)
Xtriage (Phenix) : 1.9-1692
EDS : trunk28620
Percentile statistics : 20161228.v01 (using entries in the PDB archive December 28th 2016)
Refmac : 5.8.0135
CCP4 : 6.5.0
Ideal geometry (proteins) : Engh & Huber (2001)
Ideal geometry (DNA, RNA) : Parkinson et al. (1996)
Validation Pipeline (wwPDB-VP) : recalc28949

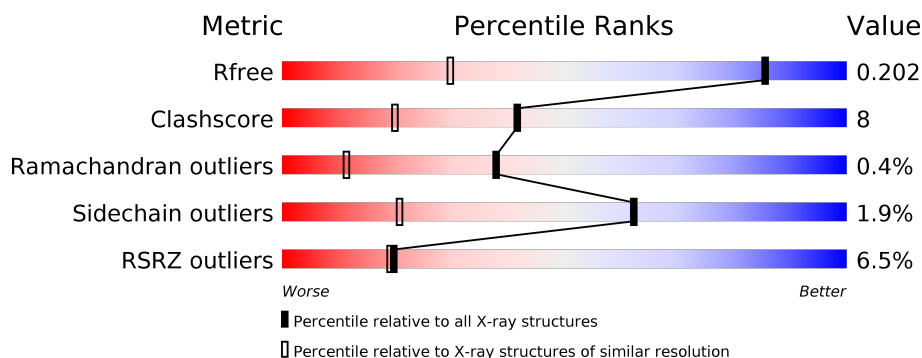
1 Overall quality at a glance

The following experimental techniques were used to determine the structure:

X-RAY DIFFRACTION

The reported resolution of this entry is 1.30 Å.

Percentile scores (ranging between 0-100) for global validation metrics of the entry are shown in the following graphic. The table shows the number of entries on which the scores are based.



Metric	Whole archive (#Entries)	Similar resolution (#Entries, resolution range(Å))
R_{free}	100719	1131 (1.32-1.28)
Clashscore	112137	1185 (1.32-1.28)
Ramachandran outliers	110173	1138 (1.32-1.28)
Sidechain outliers	110143	1138 (1.32-1.28)
RSRZ outliers	101464	1133 (1.32-1.28)

The table below summarises the geometric issues observed across the polymeric chains and their fit to the electron density. The red, orange, yellow and green segments on the lower bar indicate the fraction of residues that contain outliers for ≥ 3 , 2, 1 and 0 types of geometric quality criteria. A grey segment represents the fraction of residues that are not modelled. The numeric value for each fraction is indicated below the corresponding segment, with a dot representing fractions $\leq 5\%$. The upper red bar (where present) indicates the fraction of residues that have poor fit to the electron density. The numeric value is given above the bar.

Mol	Chain	Length	Quality of chain
1	A	258	<div> <div>6%</div> <div>87%</div> <div>10%</div> <div>..</div> </div>
1	D	258	<div> <div>7%</div> <div>90%</div> <div>7%</div> <div>..</div> </div>

The following table lists non-polymeric compounds, carbohydrate monomers and non-standard residues in protein, DNA, RNA chains that are outliers for geometric or electron-density-fit criteria:

Mol	Type	Chain	Res	Chirality	Geometry	Clashes	Electron density
3	GOL	A	260	-	-	-	X
3	GOL	D	260	-	-	-	X

2 Entry composition

There are 5 unique types of molecules in this entry. The entry contains 4754 atoms, of which 0 are hydrogens and 0 are deuteriums.

In the tables below, the ZeroOcc column contains the number of atoms modelled with zero occupancy, the AltConf column contains the number of residues with at least one atom in alternate conformation and the Trace column contains the number of residues modelled with at most 2 atoms.

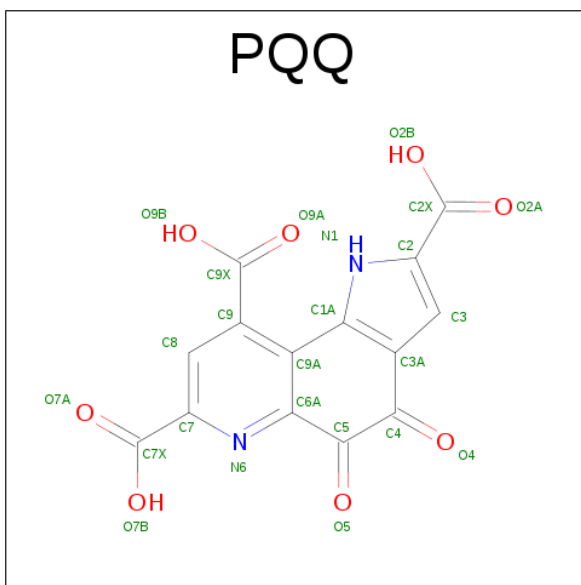
- Molecule 1 is a protein called Pyrroloquinoline-quinone synthase.

Mol	Chain	Residues	Atoms					ZeroOcc	AltConf	Trace
1	A	254	Total	C	N	O	S	4	10	0
			2136	1357	390	376	13			
1	D	254	Total	C	N	O	S	1	12	0
			2151	1371	391	376	13			

There are 16 discrepancies between the modelled and reference sequences:

Chain	Residue	Modelled	Actual	Comment	Reference
A	175	PHE	TYR	ENGINEERED MUTATION	UNP A6T9H1
A	252	LEU	-	EXPRESSION TAG	UNP A6T9H1
A	253	GLU	-	EXPRESSION TAG	UNP A6T9H1
A	254	HIS	-	EXPRESSION TAG	UNP A6T9H1
A	255	HIS	-	EXPRESSION TAG	UNP A6T9H1
A	256	HIS	-	EXPRESSION TAG	UNP A6T9H1
A	257	HIS	-	EXPRESSION TAG	UNP A6T9H1
A	258	HIS	-	EXPRESSION TAG	UNP A6T9H1
D	175	PHE	TYR	ENGINEERED MUTATION	UNP A6T9H1
D	252	LEU	-	EXPRESSION TAG	UNP A6T9H1
D	253	GLU	-	EXPRESSION TAG	UNP A6T9H1
D	254	HIS	-	EXPRESSION TAG	UNP A6T9H1
D	255	HIS	-	EXPRESSION TAG	UNP A6T9H1
D	256	HIS	-	EXPRESSION TAG	UNP A6T9H1
D	257	HIS	-	EXPRESSION TAG	UNP A6T9H1
D	258	HIS	-	EXPRESSION TAG	UNP A6T9H1

- Molecule 2 is PYRROLOQUINOLINE QUINONE (three-letter code: PQQ) (formula: C₁₄H₆N₂O₈).



Mol	Chain	Residues	Atoms				ZeroOcc	AltConf
2	A	1	Total	C	N	O	0	0
			24	14	2	8		
2	D	1	Total	C	N	O	0	0
			24	14	2	8		

- Molecule 3 is GLYCEROL (three-letter code: GOL) (formula: $C_3H_8O_3$).



Mol	Chain	Residues	Atoms			ZeroOcc	AltConf
3	A	1	Total	C	O	0	0
			6	3	3		
3	A	1	Total	C	O	0	0
			6	3	3		

Continued on next page...

Continued from previous page...

Mol	Chain	Residues	Atoms			ZeroOcc	AltConf
3	D	1	Total	C	O	0	0
			6	3	3		
3	D	1	Total	C	O	0	0
			6	3	3		

- Molecule 4 is CHLORIDE ION (three-letter code: CL) (formula: Cl).

Mol	Chain	Residues	Atoms		ZeroOcc	AltConf
4	A	1	Total	Cl	0	0
			1	1		
4	D	1	Total	Cl	0	0
			1	1		

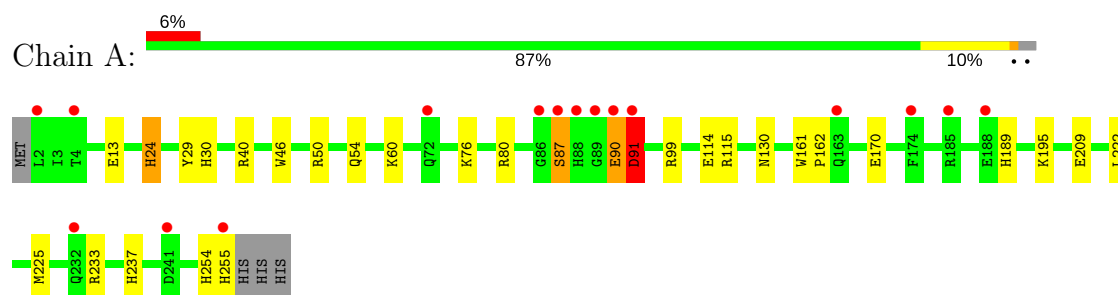
- Molecule 5 is water.

Mol	Chain	Residues	Atoms		ZeroOcc	AltConf
5	A	204	Total	O	0	0
			204	204		
5	D	189	Total	O	0	0
			189	189		

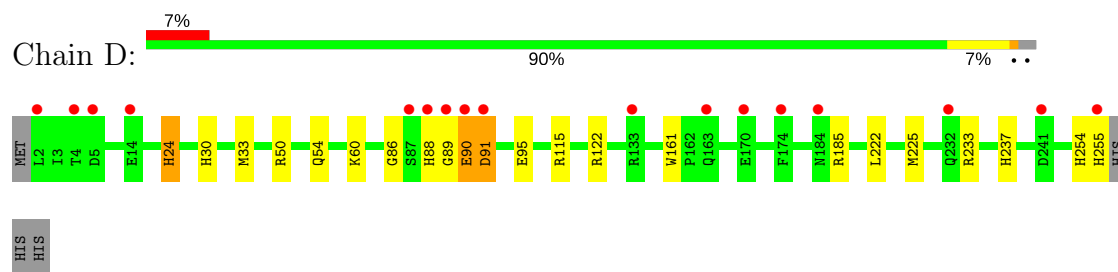
3 Residue-property plots [i](#)

These plots are drawn for all protein, RNA and DNA chains in the entry. The first graphic for a chain summarises the proportions of the various outlier classes displayed in the second graphic. The second graphic shows the sequence view annotated by issues in geometry and electron density. Residues are color-coded according to the number of geometric quality criteria for which they contain at least one outlier: green = 0, yellow = 1, orange = 2 and red = 3 or more. A red dot above a residue indicates a poor fit to the electron density ($RSRZ > 2$). Stretches of 2 or more consecutive residues without any outlier are shown as a green connector. Residues present in the sample, but not in the model, are shown in grey.

- Molecule 1: Pyrroloquinoline-quinone synthase



- Molecule 1: Pyrroloquinoline-quinone synthase



4 Data and refinement statistics

Property	Value	Source
Space group	P 21 21 2	Depositor
Cell constants a, b, c, α , β , γ	71.61Å 116.78Å 68.28Å 90.00° 90.00° 90.00°	Depositor
Resolution (Å)	37.70 – 1.30 37.72 – 1.30	Depositor EDS
% Data completeness (in resolution range)	88.2 (37.70-1.30) 88.2 (37.72-1.30)	Depositor EDS
R_{merge}	0.19	Depositor
R_{sym}	0.17	Depositor
$\langle I/\sigma(I) \rangle$ ¹	1.67 (at 1.30Å)	Xtriage
Refinement program	REFMAC 5.2.0019	Depositor
R, R_{free}	0.164 , 0.198 0.171 , 0.202	Depositor DCC
R_{free} test set	6232 reflections (5.28%)	DCC
Wilson B-factor (Å ²)	10.0	Xtriage
Anisotropy	0.521	Xtriage
Bulk solvent k_{sol} (e/Å ³), B_{sol} (Å ²)	0.40 , 50.7	EDS
L-test for twinning ²	$\langle L \rangle = 0.47$, $\langle L^2 \rangle = 0.30$	Xtriage
Estimated twinning fraction	0.019 for l,-k,h	Xtriage
F_o, F_c correlation	0.95	EDS
Total number of atoms	4754	wwPDB-VP
Average B, all atoms (Å ²)	12.0	wwPDB-VP

Xtriage's analysis on translational NCS is as follows: *The largest off-origin peak in the Patterson function is 6.12% of the height of the origin peak. No significant pseudotranslation is detected.*

¹Intensities estimated from amplitudes.

²Theoretical values of $\langle |L| \rangle$, $\langle L^2 \rangle$ for acentric reflections are 0.5, 0.333 respectively for untwinned datasets, and 0.375, 0.2 for perfectly twinned datasets.

5 Model quality

5.1 Standard geometry

Bond lengths and bond angles in the following residue types are not validated in this section: GOL, CL, PQQ

The Z score for a bond length (or angle) is the number of standard deviations the observed value is removed from the expected value. A bond length (or angle) with $|Z| > 5$ is considered an outlier worth inspection. RMSZ is the root-mean-square of all Z scores of the bond lengths (or angles).

Mol	Chain	Bond lengths		Bond angles	
		RMSZ	$\# Z > 5$	RMSZ	$\# Z > 5$
1	A	0.94	1/2224 (0.0%)	0.85	3/3015 (0.1%)
1	D	0.89	0/2245	0.84	3/3044 (0.1%)
All	All	0.91	1/4469 (0.0%)	0.84	6/6059 (0.1%)

All (1) bond length outliers are listed below:

Mol	Chain	Res	Type	Atoms	Z	Observed(Å)	Ideal(Å)
1	A	209	GLU	CD-OE2	5.12	1.31	1.25

All (6) bond angle outliers are listed below:

Mol	Chain	Res	Type	Atoms	Z	Observed(°)	Ideal(°)
1	D	115	ARG	NE-CZ-NH2	-9.74	115.43	120.30
1	D	115	ARG	NE-CZ-NH1	6.77	123.68	120.30
1	A	115	ARG	NE-CZ-NH1	5.67	123.13	120.30
1	A	80	ARG	NE-CZ-NH2	-5.12	117.74	120.30
1	A	233	ARG	NE-CZ-NH2	-5.09	117.75	120.30
1	D	122	ARG	NE-CZ-NH1	5.03	122.81	120.30

There are no chirality outliers.

There are no planarity outliers.

5.2 Too-close contacts

In the following table, the Non-H and H(model) columns list the number of non-hydrogen atoms and hydrogen atoms in the chain respectively. The H(added) column lists the number of hydrogen atoms added and optimized by MolProbity. The Clashes column lists the number of clashes within the asymmetric unit, whereas Symm-Clashes lists symmetry related clashes.

Mol	Chain	Non-H	H(model)	H(added)	Clashes	Symm-Clashes
1	A	2136	0	2075	32	0
1	D	2151	0	2109	35	0
2	A	24	0	3	0	0
2	D	24	0	3	0	0
3	A	12	0	16	5	0
3	D	12	0	16	2	0
4	A	1	0	0	0	0
4	D	1	0	0	0	0
5	A	204	0	0	10	0
5	D	189	0	0	5	0
All	All	4754	0	4222	69	0

The all-atom clashscore is defined as the number of clashes found per 1000 atoms (including hydrogen atoms). The all-atom clashscore for this structure is 8.

All (69) close contacts within the same asymmetric unit are listed below, sorted by their clash magnitude.

Atom-1	Atom-2	Interatomic distance (Å)	Clash overlap (Å)
1:A:91:ASP:OD2	1:A:99:ARG:NH1	1.90	1.04
1:D:90:GLU:HG3	1:D:95:GLU:HB3	1.51	0.90
1:D:222:LEU:HD23	1:D:225[A]:MET:CE	2.02	0.89
1:D:86:GLY:HA3	1:D:91:ASP:O	1.79	0.81
1:D:90:GLU:O	1:D:90:GLU:HG3	1.79	0.81
1:A:222:LEU:HD23	1:A:225[A]:MET:CE	2.12	0.80
1:D:88:HIS:O	1:D:91:ASP:HB3	1.86	0.75
1:A:254:HIS:HD2	1:A:255:HIS:ND1	1.85	0.74
1:A:254:HIS:HE1	5:A:384:HOH:O	1.71	0.74
1:D:90:GLU:HG3	1:D:95:GLU:CB	2.16	0.74
3:A:260:GOL:H32	5:A:407:HOH:O	1.87	0.74
1:D:90:GLU:O	1:D:95:GLU:CB	2.37	0.73
1:D:90:GLU:HA	1:D:95:GLU:HG3	1.70	0.71
1:A:222:LEU:HD23	1:A:225[A]:MET:HE1	1.71	0.71
1:D:90:GLU:CA	1:D:95:GLU:HG3	2.21	0.69
1:D:89:GLY:C	1:D:91:ASP:H	1.94	0.69
1:A:50:ARG:HH21	1:A:54:GLN:NE2	1.91	0.68
1:D:50:ARG:HH21	1:D:54:GLN:NE2	1.93	0.66
1:D:90:GLU:O	1:D:90:GLU:CG	2.44	0.66
1:D:89:GLY:O	1:D:91:ASP:N	2.30	0.65
1:D:185[B]:ARG:NH2	5:D:299:HOH:O	2.30	0.64
1:D:222:LEU:HD23	1:D:225[A]:MET:HE2	1.79	0.63
1:D:33:MET:CE	1:D:161:TRP:CZ2	2.82	0.63
3:A:260:GOL:C3	5:A:407:HOH:O	2.45	0.62

Continued on next page...

Continued from previous page...

Atom-1	Atom-2	Interatomic distance (Å)	Clash overlap (Å)
1:D:33:MET:HE2	1:D:161:TRP:CZ2	2.34	0.62
1:D:90:GLU:O	1:D:95:GLU:HB2	1.99	0.61
1:A:189:HIS:HB2	3:A:259:GOL:H11	1.83	0.58
1:D:90:GLU:CD	1:D:95:GLU:OE1	2.42	0.58
1:A:50:ARG:HH21	1:A:54:GLN:HE22	1.51	0.58
1:D:33:MET:HE2	1:D:161:TRP:HZ2	1.69	0.58
1:A:91:ASP:HB3	5:A:368:HOH:O	2.04	0.57
1:D:90:GLU:C	1:D:95:GLU:HG3	2.25	0.57
1:D:222:LEU:HD23	1:D:225[A]:MET:HE1	1.86	0.57
1:D:222:LEU:CD2	1:D:225[A]:MET:CE	2.81	0.56
1:A:237:HIS:HE1	5:A:302:HOH:O	1.88	0.56
1:A:222:LEU:HD23	1:A:225[A]:MET:HE2	1.86	0.56
1:D:50:ARG:HH21	1:D:54:GLN:HE22	1.54	0.55
1:D:237:HIS:HE1	5:D:309:HOH:O	1.89	0.55
1:D:237:HIS:HD2	5:D:339:HOH:O	1.89	0.55
1:D:89:GLY:C	1:D:91:ASP:N	2.60	0.54
1:A:170:GLU:H	1:A:170:GLU:CD	2.10	0.54
1:D:90:GLU:O	1:D:95:GLU:HG3	2.08	0.53
1:A:30[B]:HIS:HE1	1:A:46:TRP:HE1	1.56	0.52
1:A:237:HIS:HD2	5:A:694:HOH:O	1.93	0.51
1:A:189:HIS:CB	3:A:259:GOL:H11	2.40	0.51
1:A:40[B]:ARG:HD3	5:A:657:HOH:O	2.10	0.51
1:D:90:GLU:HG3	1:D:95:GLU:CG	2.42	0.50
1:D:24:HIS:HD2	5:D:267:HOH:O	1.94	0.49
1:D:30[A]:HIS:HE1	5:D:729:HOH:O	1.97	0.48
1:A:24:HIS:HD2	5:A:265:HOH:O	1.97	0.46
1:A:114:GLU:OE1	5:A:311:HOH:O	2.21	0.46
1:A:222:LEU:CD2	1:A:225[A]:MET:HE1	2.44	0.46
1:D:90:GLU:O	1:D:95:GLU:CG	2.64	0.46
1:D:254:HIS:O	1:D:255:HIS:HB2	2.14	0.45
1:A:222:LEU:CD2	1:A:225[A]:MET:CE	2.91	0.45
1:A:30[B]:HIS:HE1	1:A:46:TRP:NE1	2.13	0.45
1:D:254:HIS:O	1:D:255:HIS:CB	2.65	0.44
1:A:87:SER:O	1:A:90:GLU:OE1	2.36	0.43
1:A:87:SER:O	1:A:90:GLU:CD	2.57	0.42
1:A:161:TRP:N	1:A:162:PRO:CD	2.83	0.42
1:A:46:TRP:HD1	1:A:225[A]:MET:HE1	1.84	0.42
1:A:87:SER:O	1:A:90:GLU:OE2	2.38	0.42
1:A:130[A]:ASN:ND2	5:A:347:HOH:O	2.52	0.41
1:A:254:HIS:CD2	1:A:255:HIS:ND1	2.77	0.41
1:A:13:GLU:HB2	1:A:195:LYS:HE3	2.03	0.41

Continued on next page...

Continued from previous page...

Atom-1	Atom-2	Interatomic distance (Å)	Clash overlap (Å)
1:A:50:ARG:HE	1:A:54:GLN:HE21	1.67	0.41
1:D:233:ARG:HH22	3:D:260:GOL:H12	1.86	0.41
1:A:29:TYR:HA	3:D:260:GOL:H31	2.03	0.41
1:A:76:LYS:O	3:A:259:GOL:H31	2.21	0.40

There are no symmetry-related clashes.

5.3 Torsion angles [i](#)

5.3.1 Protein backbone [i](#)

In the following table, the Percentiles column shows the percent Ramachandran outliers of the chain as a percentile score with respect to all X-ray entries followed by that with respect to entries of similar resolution.

The Analysed column shows the number of residues for which the backbone conformation was analysed, and the total number of residues.

Mol	Chain	Analysed	Favoured	Allowed	Outliers	Percentiles	
1	A	262/258 (102%)	258 (98%)	3 (1%)	1 (0%)	38	11
1	D	265/258 (103%)	262 (99%)	2 (1%)	1 (0%)	38	11
All	All	527/516 (102%)	520 (99%)	5 (1%)	2 (0%)	38	11

All (2) Ramachandran outliers are listed below:

Mol	Chain	Res	Type
1	A	91	ASP
1	D	90	GLU

5.3.2 Protein sidechains [i](#)

In the following table, the Percentiles column shows the percent sidechain outliers of the chain as a percentile score with respect to all X-ray entries followed by that with respect to entries of similar resolution.

The Analysed column shows the number of residues for which the sidechain conformation was analysed, and the total number of residues.

Continued on next page...

Continued from previous page...

Mol	Chain	Analysed	Rotameric	Outliers	Percentiles
1	A	223/217 (103%)	218 (98%)	5 (2%)	57 15
1	D	226/217 (104%)	223 (99%)	3 (1%)	73 35
All	All	449/434 (104%)	441 (98%)	8 (2%)	62 23

All (8) residues with a non-rotameric sidechain are listed below:

Mol	Chain	Res	Type
1	A	24	HIS
1	A	60	LYS
1	A	87	SER
1	A	90	GLU
1	A	91	ASP
1	D	24	HIS
1	D	60	LYS
1	D	91	ASP

Some sidechains can be flipped to improve hydrogen bonding and reduce clashes. All (8) such sidechains are listed below:

Mol	Chain	Res	Type
1	A	24	HIS
1	A	54	GLN
1	A	84	HIS
1	A	237	HIS
1	A	254	HIS
1	D	24	HIS
1	D	54	GLN
1	D	237	HIS

5.3.3 RNA ⓘ

There are no RNA molecules in this entry.

5.4 Non-standard residues in protein, DNA, RNA chains ⓘ

There are no non-standard protein/DNA/RNA residues in this entry.

5.5 Carbohydrates [i](#)

There are no carbohydrates in this entry.

5.6 Ligand geometry [i](#)

Of 8 ligands modelled in this entry, 2 are monoatomic - leaving 6 for Mogul analysis.

In the following table, the Counts columns list the number of bonds (or angles) for which Mogul statistics could be retrieved, the number of bonds (or angles) that are observed in the model and the number of bonds (or angles) that are defined in the chemical component dictionary. The Link column lists molecule types, if any, to which the group is linked. The Z score for a bond length (or angle) is the number of standard deviations the observed value is removed from the expected value. A bond length (or angle) with $|Z| > 2$ is considered an outlier worth inspection. RMSZ is the root-mean-square of all Z scores of the bond lengths (or angles).

Mol	Type	Chain	Res	Link	Bond lengths			Bond angles		
					Counts	RMSZ	# Z > 2	Counts	RMSZ	# Z > 2
3	GOL	A	259	-	5,5,5	0.61	0	5,5,5	1.71	2 (40%)
3	GOL	A	260	-	5,5,5	0.64	0	5,5,5	1.04	0
2	PQQ	A	500	-	17,26,26	3.66	7 (41%)	15,40,40	1.46	3 (20%)
3	GOL	D	259	-	5,5,5	0.69	0	5,5,5	0.87	0
3	GOL	D	260	-	5,5,5	0.50	0	5,5,5	0.71	0
2	PQQ	D	500	-	17,26,26	3.56	6 (35%)	15,40,40	1.15	1 (6%)

In the following table, the Chirals column lists the number of chiral outliers, the number of chiral centers analysed, the number of these observed in the model and the number defined in the chemical component dictionary. Similar counts are reported in the Torsion and Rings columns. '-' means no outliers of that kind were identified.

Mol	Type	Chain	Res	Link	Chirals	Torsions	Rings
3	GOL	A	259	-	-	0/4/4/4	0/0/0/0
3	GOL	A	260	-	-	0/4/4/4	0/0/0/0
2	PQQ	A	500	-	-	0/0/28/28	0/3/3/3
3	GOL	D	259	-	-	0/4/4/4	0/0/0/0
3	GOL	D	260	-	-	0/4/4/4	0/0/0/0
2	PQQ	D	500	-	-	0/0/28/28	0/3/3/3

All (13) bond length outliers are listed below:

Mol	Chain	Res	Type	Atoms	Z	Observed(Å)	Ideal(Å)
2	A	500	PQQ	C9A-C1A	-9.95	1.40	1.48
2	D	500	PQQ	C9A-C1A	-9.57	1.41	1.48
2	A	500	PQQ	C5-C4	-2.28	1.46	1.53

Continued on next page...

Continued from previous page...

Mol	Chain	Res	Type	Atoms	Z	Observed(Å)	Ideal(Å)
2	D	500	PQQ	O4-C4	2.57	1.28	1.23
2	A	500	PQQ	O4-C4	2.87	1.29	1.23
2	A	500	PQQ	O5-C5	3.62	1.31	1.23
2	A	500	PQQ	C9-C9A	3.63	1.47	1.41
2	D	500	PQQ	O5-C5	4.24	1.32	1.23
2	D	500	PQQ	C9-C9A	4.93	1.50	1.41
2	D	500	PQQ	C3A-C1A	5.29	1.47	1.40
2	A	500	PQQ	C3A-C1A	5.74	1.48	1.40
2	D	500	PQQ	C9A-C6A	6.21	1.47	1.40
2	A	500	PQQ	C9A-C6A	6.92	1.48	1.40

All (6) bond angle outliers are listed below:

Mol	Chain	Res	Type	Atoms	Z	Observed(°)	Ideal(°)
3	A	259	GOL	C3-C2-C1	-2.70	100.78	111.52
2	A	500	PQQ	O5-C5-C6A	-2.38	119.33	122.03
2	A	500	PQQ	C9A-C1A-N1	2.07	128.94	124.47
3	A	259	GOL	O2-C2-C3	2.41	120.22	108.84
2	D	500	PQQ	C6A-N6-C7	2.52	122.22	118.16
2	A	500	PQQ	C6A-N6-C7	2.73	122.57	118.16

There are no chirality outliers.

There are no torsion outliers.

There are no ring outliers.

3 monomers are involved in 7 short contacts:

Mol	Chain	Res	Type	Clashes	Symm-Clashes
3	A	259	GOL	3	0
3	A	260	GOL	2	0
3	D	260	GOL	2	0

5.7 Other polymers [i](#)

There are no such residues in this entry.

5.8 Polymer linkage issues [i](#)

There are no chain breaks in this entry.

6 Fit of model and data

6.1 Protein, DNA and RNA chains

In the following table, the column labelled ‘#RSRZ > 2’ contains the number (and percentage) of RSRZ outliers, followed by percent RSRZ outliers for the chain as percentile scores relative to all X-ray entries and entries of similar resolution. The OWAB column contains the minimum, median, 95th percentile and maximum values of the occupancy-weighted average B-factor per residue. The column labelled ‘Q < 0.9’ lists the number of (and percentage) of residues with an average occupancy less than 0.9.

Mol	Chain	Analysed	<RSRZ>	#RSRZ>2	OWAB(Å ²)	Q<0.9
1	A	254/258 (98%)	0.34	16 (6%) 21 20	6, 10, 20, 35	11 (4%)
1	D	254/258 (98%)	0.42	17 (6%) 19 18	6, 10, 20, 33	6 (2%)
All	All	508/516 (98%)	0.38	33 (6%) 20 19	6, 10, 20, 35	17 (3%)

All (33) RSRZ outliers are listed below:

Mol	Chain	Res	Type	RSRZ
1	A	88	HIS	16.9
1	D	88	HIS	14.6
1	A	89	GLY	14.4
1	D	89	GLY	13.7
1	D	90	GLU	11.0
1	D	255	HIS	10.5
1	A	90	GLU	8.9
1	D	87	SER	7.8
1	A	87	SER	7.4
1	D	91	ASP	7.3
1	D	2	LEU	6.6
1	A	91	ASP	6.5
1	A	2	LEU	6.4
1	D	163	GLN	6.3
1	D	232	GLN	5.0
1	D	4	THR	3.9
1	A	185	ARG	3.4
1	A	255	HIS	3.3
1	D	170	GLU	3.2
1	D	184	ASN	3.1
1	D	5	ASP	3.0
1	D	14	GLU	2.7
1	A	241	ASP	2.7
1	D	174	PHE	2.6

Continued on next page...

Continued from previous page...

Mol	Chain	Res	Type	RSRZ
1	A	232[A]	GLN	2.5
1	A	4	THR	2.5
1	A	188	GLU	2.4
1	A	163	GLN	2.4
1	A	174	PHE	2.2
1	D	241	ASP	2.1
1	A	72	GLN	2.0
1	D	133[A]	ARG	2.0
1	A	86	GLY	2.0

6.2 Non-standard residues in protein, DNA, RNA chains [i](#)

There are no non-standard protein/DNA/RNA residues in this entry.

6.3 Carbohydrates [i](#)

There are no carbohydrates in this entry.

6.4 Ligands [i](#)

In the following table, the Atoms column lists the number of modelled atoms in the group and the number defined in the chemical component dictionary. LLDF column lists the quality of electron density of the group with respect to its neighbouring residues in protein, DNA or RNA chains. The B-factors column lists the minimum, median, 95th percentile and maximum values of B factors of atoms in the group. The column labelled 'Q < 0.9' lists the number of atoms with occupancy less than 0.9.

Mol	Type	Chain	Res	Atoms	RSCC	RSR	LLDF	B-factors(Å ²)	Q<0.9
3	GOL	A	260	6/6	0.93	0.27	19.31	18,25,27,29	0
3	GOL	D	260	6/6	0.80	0.28	14.86	22,27,29,35	0
3	GOL	D	259	6/6	0.87	0.18	1.96	12,25,27,29	0
3	GOL	A	259	6/6	0.90	0.24	1.93	12,24,28,30	0
2	PQQ	A	500	24/24	0.97	0.07	-0.70	5,7,10,11	0
2	PQQ	D	500	24/24	0.97	0.06	-1.06	6,8,10,10	0
4	CL	A	261	1/1	1.00	0.06	-	10,10,10,10	0
4	CL	D	261	1/1	1.00	0.04	-	11,11,11,11	0

6.5 Other polymers [i](#)

There are no such residues in this entry.