



Full wwPDB X-ray Structure Validation Report ⓘ

Feb 13, 2017 – 12:54 am GMT

PDB ID : 2HOG
Title : crystal structure of Chek1 in complex with inhibitor 20
Authors : Yan, Y.; Ikuta, M.
Deposited on : 2006-07-14
Resolution : 1.90 Å(reported)

This is a Full wwPDB X-ray Structure Validation Report for a publicly released PDB entry.

We welcome your comments at validation@mail.wwpdb.org

A user guide is available at

<http://wwpdb.org/validation/2016/XrayValidationReportHelp>

with specific help available everywhere you see the ⓘ symbol.

The following versions of software and data (see [references ⓘ](#)) were used in the production of this report:

MolProbity : 4.02b-467
Mogul : 1.7.2 (RC1), CSD as538be (2017)
Xtriage (Phenix) : **NOT EXECUTED**
EDS : **NOT EXECUTED**
Percentile statistics : 20161228.v01 (using entries in the PDB archive December 28th 2016)
Ideal geometry (proteins) : Engh & Huber (2001)
Ideal geometry (DNA, RNA) : Parkinson et al. (1996)
Validation Pipeline (wwPDB-VP) : recalc28949

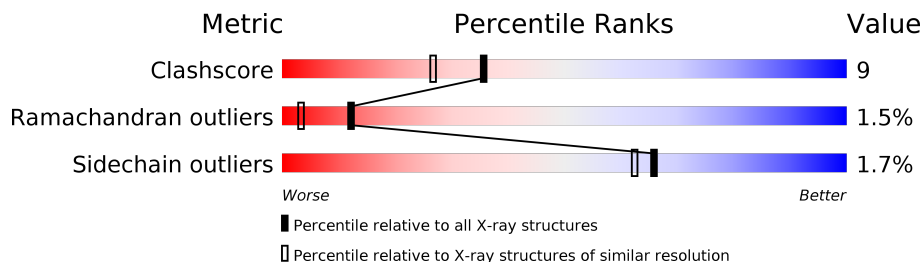
1 Overall quality at a glance

The following experimental techniques were used to determine the structure:

X-RAY DIFFRACTION

The reported resolution of this entry is 1.90 Å.

Percentile scores (ranging between 0-100) for global validation metrics of the entry are shown in the following graphic. The table shows the number of entries on which the scores are based.



Metric	Whole archive (#Entries)	Similar resolution (#Entries, resolution range(Å))
Clashscore	112137	5731 (1.90-1.90)
Ramachandran outliers	110173	5669 (1.90-1.90)
Sidechain outliers	110143	5670 (1.90-1.90)

The table below summarises the geometric issues observed across the polymeric chains and their fit to the electron density. The red, orange, yellow and green segments on the lower bar indicate the fraction of residues that contain outliers for ≥ 3 , 2, 1 and 0 types of geometric quality criteria. A grey segment represents the fraction of residues that are not modelled. The numeric value for each fraction is indicated below the corresponding segment, with a dot representing fractions $\leq 5\%$. The upper red bar (where present) indicates the fraction of residues that have poor fit to the electron density. The numeric value is given above the bar.

Note EDS was not executed.

Mol	Chain	Length	Quality of chain
1	A	322	 70% 12% • 16%

2 Entry composition

There are 3 unique types of molecules in this entry. The entry contains 2464 atoms, of which 0 are hydrogens and 0 are deuteriums.

In the tables below, the ZeroOcc column contains the number of atoms modelled with zero occupancy, the AltConf column contains the number of residues with at least one atom in alternate conformation and the Trace column contains the number of residues modelled with at most 2 atoms.

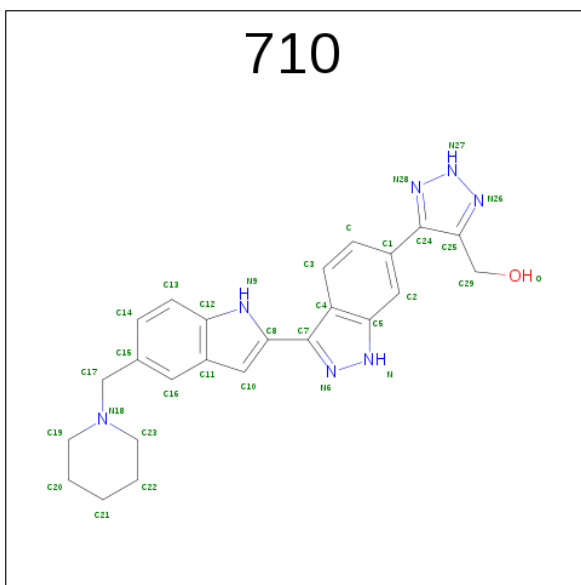
- Molecule 1 is a protein called Serine/threonine-protein kinase Chk1.

Mol	Chain	Residues	Atoms					ZeroOcc	AltConf	Trace
			Total	C	N	O	S			
1	A	272	2200	1408	383	398	11	0	0	0

There are 16 discrepancies between the modelled and reference sequences:

Chain	Residue	Modelled	Actual	Comment	Reference
A	308	ARG	-	CLONING ARTIFACT	UNP O14757
A	309	THR	-	CLONING ARTIFACT	UNP O14757
A	310	PRO	-	CLONING ARTIFACT	UNP O14757
A	311	GLY	-	CLONING ARTIFACT	UNP O14757
A	312	SER	-	CLONING ARTIFACT	UNP O14757
A	313	GLY	-	CLONING ARTIFACT	UNP O14757
A	314	TRP	-	CLONING ARTIFACT	UNP O14757
A	315	SER	-	CLONING ARTIFACT	UNP O14757
A	316	LYS	-	CLONING ARTIFACT	UNP O14757
A	317	GLU	-	CLONING ARTIFACT	UNP O14757
A	318	HIS	-	EXPRESSION TAG	UNP O14757
A	319	HIS	-	EXPRESSION TAG	UNP O14757
A	320	HIS	-	EXPRESSION TAG	UNP O14757
A	321	HIS	-	EXPRESSION TAG	UNP O14757
A	322	HIS	-	EXPRESSION TAG	UNP O14757
A	323	HIS	-	EXPRESSION TAG	UNP O14757

- Molecule 2 is (5-{3-[5-(PIPERIDIN-1-YLMETHYL)-1H-INDOL-2-YL]-1H-INDAZOL-6-YL}-2H-1,2,3-TRIAZOL-4-YL)METHANOL (three-letter code: 710) (formula: C₂₄H₂₅N₇O).



Mol	Chain	Residues	Atoms				ZeroOcc	AltConf
2	A	1	Total	C	N	O	0	0
			32	24	7	1		

- Molecule 3 is water.

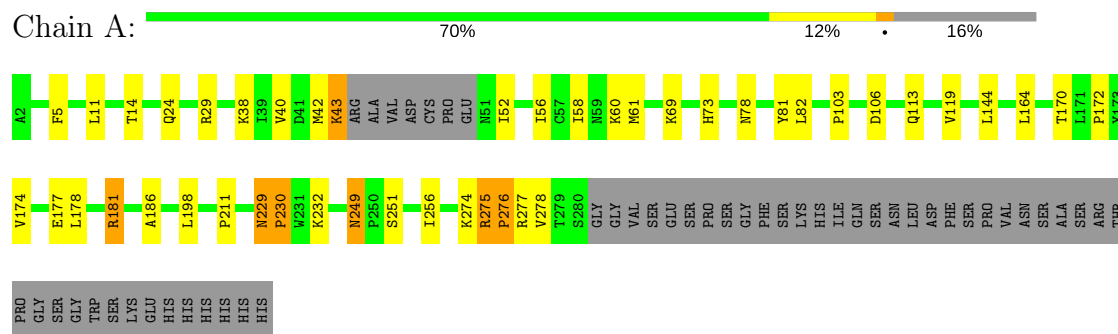
Mol	Chain	Residues	Atoms		ZeroOcc	AltConf
3	A	232	Total	O	0	0
			232	232		

3 Residue-property plots [i](#)

These plots are drawn for all protein, RNA and DNA chains in the entry. The first graphic for a chain summarises the proportions of the various outlier classes displayed in the second graphic. The second graphic shows the sequence view annotated by issues in geometry and electron density. Residues are color-coded according to the number of geometric quality criteria for which they contain at least one outlier: green = 0, yellow = 1, orange = 2 and red = 3 or more. A red dot above a residue indicates a poor fit to the electron density ($RSRZ > 2$). Stretches of 2 or more consecutive residues without any outlier are shown as a green connector. Residues present in the sample, but not in the model, are shown in grey.

Note EDS was not executed.

- Molecule 1: Serine/threonine-protein kinase Chk1



4 Data and refinement statistics

Xtriage (Phenix) and EDS were not executed - this section is therefore incomplete.

Property	Value	Source
Space group	P 1 21 1	Depositor
Cell constants a, b, c, α , β , γ	44.97Å 65.53Å 58.40Å 90.00° 94.20° 90.00°	Depositor
Resolution (Å)	44.80 – 1.90	Depositor
% Data completeness (in resolution range)	99.8 (44.80-1.90)	Depositor
R_{merge}	0.08	Depositor
R_{sym}	0.08	Depositor
Refinement program	CNS	Depositor
R, R_{free}	0.204 , 0.236	Depositor
Estimated twinning fraction	No twinning to report.	Xtriage
Total number of atoms	2464	wwPDB-VP
Average B, all atoms (Å ²)	28.0	wwPDB-VP

5 Model quality

5.1 Standard geometry

Bond lengths and bond angles in the following residue types are not validated in this section: 710

The Z score for a bond length (or angle) is the number of standard deviations the observed value is removed from the expected value. A bond length (or angle) with $|Z| > 5$ is considered an outlier worth inspection. RMSZ is the root-mean-square of all Z scores of the bond lengths (or angles).

Mol	Chain	Bond lengths		Bond angles	
		RMSZ	$\# Z > 5$	RMSZ	$\# Z > 5$
1	A	0.26	0/2251	0.55	0/3046

There are no bond length outliers.

There are no bond angle outliers.

There are no chirality outliers.

There are no planarity outliers.

5.2 Too-close contacts

In the following table, the Non-H and H(model) columns list the number of non-hydrogen atoms and hydrogen atoms in the chain respectively. The H(added) column lists the number of hydrogen atoms added and optimized by MolProbity. The Clashes column lists the number of clashes within the asymmetric unit, whereas Symm-Clashes lists symmetry related clashes.

Mol	Chain	Non-H	H(model)	H(added)	Clashes	Symm-Clashes
1	A	2200	0	2207	41	0
2	A	32	0	25	2	0
3	A	232	0	0	3	0
All	All	2464	0	2232	41	0

The all-atom clashscore is defined as the number of clashes found per 1000 atoms (including hydrogen atoms). The all-atom clashscore for this structure is 9.

All (41) close contacts within the same asymmetric unit are listed below, sorted by their clash magnitude.

Atom-1	Atom-2	Interatomic distance (Å)	Clash overlap (Å)
1:A:113:GLN:NE2	1:A:144:LEU:H	1.75	0.84

Continued on next page...

Continued from previous page...

Atom-1	Atom-2	Interatomic distance (Å)	Clash overlap (Å)
1:A:164:LEU:HD21	1:A:186:ALA:HB2	1.68	0.76
1:A:164:LEU:N	1:A:164:LEU:HD22	2.03	0.73
1:A:14:THR:HA	1:A:24:GLN:HG2	1.74	0.69
1:A:38:LYS:NZ	2:A:324:710:H27	1.92	0.67
1:A:38:LYS:HZ1	2:A:324:710:H27	1.44	0.64
1:A:164:LEU:CD2	1:A:186:ALA:HB2	2.28	0.64
1:A:40:VAL:HG12	1:A:42:MET:H	1.61	0.64
1:A:181:ARG:HD2	3:A:372:HOH:O	1.99	0.62
1:A:170:THR:HG22	1:A:172:PRO:HD2	1.83	0.60
1:A:276:PRO:O	1:A:277:ARG:HB2	2.04	0.57
1:A:11:LEU:N	1:A:11:LEU:HD12	2.19	0.57
1:A:229:ASN:N	1:A:232:LYS:HZ2	2.03	0.56
1:A:103:PRO:HG2	1:A:106:ASP:OD1	2.05	0.56
1:A:229:ASN:HA	1:A:232:LYS:HG2	1.90	0.54
1:A:229:ASN:HB3	1:A:230:PRO:HD3	1.91	0.53
1:A:38:LYS:HB3	1:A:82:LEU:HB2	1.92	0.51
1:A:275:ARG:H	1:A:276:PRO:HD2	1.76	0.51
1:A:113:GLN:HE22	1:A:144:LEU:H	1.55	0.51
1:A:52:ILE:O	1:A:56:ILE:HG12	2.11	0.51
1:A:164:LEU:N	1:A:164:LEU:CD2	2.73	0.50
1:A:249:ASN:ND2	1:A:251:SER:H	2.10	0.49
1:A:43:LYS:HZ2	1:A:78:ASN:CB	2.25	0.49
1:A:277:ARG:O	1:A:278:VAL:HG13	2.12	0.49
1:A:174:VAL:HG21	1:A:178:LEU:HD22	1.95	0.48
1:A:58:ILE:O	1:A:61:MET:HG2	2.14	0.46
1:A:249:ASN:C	1:A:249:ASN:HD22	2.18	0.46
1:A:174:VAL:O	1:A:211:PRO:HG3	2.16	0.46
1:A:230:PRO:HG2	3:A:551:HOH:O	2.15	0.45
1:A:274:LYS:HB2	1:A:274:LYS:NZ	2.31	0.45
1:A:174:VAL:CG2	1:A:178:LEU:HD13	2.47	0.45
1:A:5:PHE:HB3	1:A:29:ARG:HD3	2.00	0.44
1:A:43:LYS:HZ2	1:A:78:ASN:HB3	1.84	0.43
1:A:56:ILE:HG22	1:A:60:LYS:HE3	2.00	0.43
1:A:43:LYS:NZ	1:A:78:ASN:ND2	2.67	0.42
1:A:275:ARG:HB3	1:A:276:PRO:HD3	2.01	0.42
1:A:275:ARG:N	1:A:276:PRO:HD2	2.34	0.42
1:A:177:GLU:HB2	1:A:181:ARG:HG3	2.02	0.41
1:A:119:VAL:CG2	1:A:256:ILE:HG21	2.50	0.41
1:A:69:LYS:HA	3:A:541:HOH:O	2.21	0.41
1:A:73:HIS:HA	1:A:81:TYR:O	2.20	0.40

There are no symmetry-related clashes.

5.3 Torsion angles

5.3.1 Protein backbone

In the following table, the Percentiles column shows the percent Ramachandran outliers of the chain as a percentile score with respect to all X-ray entries followed by that with respect to entries of similar resolution.

The Analysed column shows the number of residues for which the backbone conformation was analysed, and the total number of residues.

Mol	Chain	Analysed	Favoured	Allowed	Outliers	Percentiles
1	A	268/322 (83%)	250 (93%)	14 (5%)	4 (2%)	12 3

All (4) Ramachandran outliers are listed below:

Mol	Chain	Res	Type
1	A	275	ARG
1	A	276	PRO
1	A	229	ASN
1	A	230	PRO

5.3.2 Protein sidechains

In the following table, the Percentiles column shows the percent sidechain outliers of the chain as a percentile score with respect to all X-ray entries followed by that with respect to entries of similar resolution.

The Analysed column shows the number of residues for which the sidechain conformation was analysed, and the total number of residues.

Mol	Chain	Analysed	Rotameric	Outliers	Percentiles
1	A	239/283 (84%)	235 (98%)	4 (2%)	66 62

All (4) residues with a non-rotameric sidechain are listed below:

Mol	Chain	Res	Type
1	A	43	LYS
1	A	181	ARG
1	A	198	LEU
1	A	249	ASN

Some sidechains can be flipped to improve hydrogen bonding and reduce clashes. All (9) such sidechains are listed below:

Mol	Chain	Res	Type
1	A	13	GLN
1	A	78	ASN
1	A	80	GLN
1	A	108	GLN
1	A	113	GLN
1	A	143	ASN
1	A	158	ASN
1	A	243	HIS
1	A	249	ASN

5.3.3 RNA [i](#)

There are no RNA molecules in this entry.

5.4 Non-standard residues in protein, DNA, RNA chains [i](#)

There are no non-standard protein/DNA/RNA residues in this entry.

5.5 Carbohydrates [i](#)

There are no carbohydrates in this entry.

5.6 Ligand geometry [i](#)

1 ligand is modelled in this entry.

In the following table, the Counts columns list the number of bonds (or angles) for which Mogul statistics could be retrieved, the number of bonds (or angles) that are observed in the model and the number of bonds (or angles) that are defined in the chemical component dictionary. The Link column lists molecule types, if any, to which the group is linked. The Z score for a bond length (or angle) is the number of standard deviations the observed value is removed from the expected value. A bond length (or angle) with $|Z| > 2$ is considered an outlier worth inspection. RMSZ is the root-mean-square of all Z scores of the bond lengths (or angles).

Mol	Type	Chain	Res	Link	Bond lengths			Bond angles		
					Counts	RMSZ	$\# Z > 2$	Counts	RMSZ	$\# Z > 2$
2	710	A	324	-	33,37,37	1.64	8 (24%)	36,53,53	1.49	4 (11%)

In the following table, the Chirals column lists the number of chiral outliers, the number of chiral centers analysed, the number of these observed in the model and the number defined in the chemical component dictionary. Similar counts are reported in the Torsion and Rings columns. '-' means

no outliers of that kind were identified.

Mol	Type	Chain	Res	Link	Chirals	Torsions	Rings
2	710	A	324	-	-	0/8/22/22	0/6/6/6

All (8) bond length outliers are listed below:

Mol	Chain	Res	Type	Atoms	Z	Observed(Å)	Ideal(Å)
2	A	324	710	C7-C8	-2.03	1.48	1.50
2	A	324	710	C16-C15	2.39	1.43	1.37
2	A	324	710	C19-N18	2.42	1.53	1.47
2	A	324	710	C2-C1	2.76	1.44	1.38
2	A	324	710	C3-C	2.81	1.42	1.36
2	A	324	710	C13-C14	2.84	1.42	1.36
2	A	324	710	C23-N18	3.23	1.55	1.47
2	A	324	710	C17-N18	4.47	1.56	1.47

All (4) bond angle outliers are listed below:

Mol	Chain	Res	Type	Atoms	Z	Observed(°)	Ideal(°)
2	A	324	710	C14-C13-C12	-2.81	117.40	120.84
2	A	324	710	C25-N26-N27	-2.69	101.65	106.94
2	A	324	710	C8-N9-C12	2.78	110.20	104.47
2	A	324	710	N28-N27-N26	6.32	118.95	111.31

There are no chirality outliers.

There are no torsion outliers.

There are no ring outliers.

1 monomer is involved in 2 short contacts:

Mol	Chain	Res	Type	Clashes	Symm-Clashes
2	A	324	710	2	0

5.7 Other polymers [i](#)

There are no such residues in this entry.

5.8 Polymer linkage issues [i](#)

There are no chain breaks in this entry.

6 Fit of model and data

6.1 Protein, DNA and RNA chains

EDS was not executed - this section is therefore empty.

6.2 Non-standard residues in protein, DNA, RNA chains

EDS was not executed - this section is therefore empty.

6.3 Carbohydrates

EDS was not executed - this section is therefore empty.

6.4 Ligands

EDS was not executed - this section is therefore empty.

6.5 Other polymers

EDS was not executed - this section is therefore empty.