



# Full wwPDB X-ray Structure Validation Report ⓘ

Feb 13, 2017 – 01:19 pm GMT

PDB ID : 5HR5  
Title : Bovine Heart 6-Phosphofructo-2-Kinase/Fructose-2,6-Bisphosphatase (PFKFB2)  
Authors : Crochet, R.B.  
Deposited on : 2016-01-22  
Resolution : 1.82 Å(reported)

This is a Full wwPDB X-ray Structure Validation Report for a publicly released PDB entry.

We welcome your comments at [validation@mail.wwpdb.org](mailto:validation@mail.wwpdb.org)

A user guide is available at

<http://wwpdb.org/validation/2016/XrayValidationReportHelp>

with specific help available everywhere you see the ⓘ symbol.

---

The following versions of software and data (see [references ⓘ](#)) were used in the production of this report:

MolProbity : 4.02b-467  
Mogul : 1.7.2 (RC1), CSD as538be (2017)  
Xtriage (Phenix) : 1.9-1692  
EDS : trunk28620  
Percentile statistics : 20161228.v01 (using entries in the PDB archive December 28th 2016)  
Refmac : 5.8.0135  
CCP4 : 6.5.0  
Ideal geometry (proteins) : Engh & Huber (2001)  
Ideal geometry (DNA, RNA) : Parkinson et al. (1996)  
Validation Pipeline (wwPDB-VP) : recalc28949

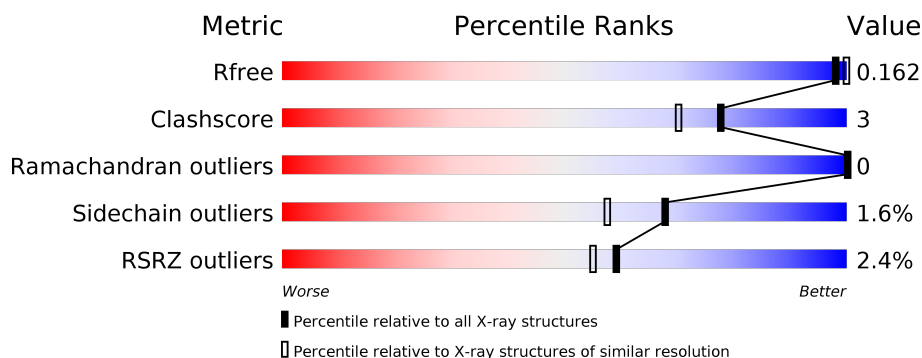
# 1 Overall quality at a glance

The following experimental techniques were used to determine the structure:

## *X-RAY DIFFRACTION*

The reported resolution of this entry is 1.82 Å.

Percentile scores (ranging between 0-100) for global validation metrics of the entry are shown in the following graphic. The table shows the number of entries on which the scores are based.



Metric	Whole archive (#Entries)	Similar resolution (#Entries, resolution range(Å))
$R_{free}$	100719	5868 (1.84-1.80)
Clashscore	112137	6856 (1.84-1.80)
Ramachandran outliers	110173	6780 (1.84-1.80)
Sidechain outliers	110143	6780 (1.84-1.80)
RSRZ outliers	101464	5947 (1.84-1.80)

The table below summarises the geometric issues observed across the polymeric chains and their fit to the electron density. The red, orange, yellow and green segments on the lower bar indicate the fraction of residues that contain outliers for  $\geq 3$ , 2, 1 and 0 types of geometric quality criteria. A grey segment represents the fraction of residues that are not modelled. The numeric value for each fraction is indicated below the corresponding segment, with a dot representing fractions  $\leq 5\%$ . The upper red bar (where present) indicates the fraction of residues that have poor fit to the electron density. The numeric value is given above the bar.

Mol	Chain	Length	Quality of chain
1	A	531	<div> <div>2%</div> <div>74%</div> <div>6%</div> <div>20%</div> </div>

The following table lists non-polymeric compounds, carbohydrate monomers and non-standard residues in protein, DNA, RNA chains that are outliers for geometric or electron-density-fit criteria:

Mol	Type	Chain	Res	Chirality	Geometry	Clashes	Electron density
2	DIO	A	601	-	-	-	X
4	FLC	A	603	-	-	-	X

## 2 Entry composition [i](#)

There are 6 unique types of molecules in this entry. The entry contains 7515 atoms, of which 3487 are hydrogens and 0 are deuteriums.

In the tables below, the ZeroOcc column contains the number of atoms modelled with zero occupancy, the AltConf column contains the number of residues with at least one atom in alternate conformation and the Trace column contains the number of residues modelled with at most 2 atoms.

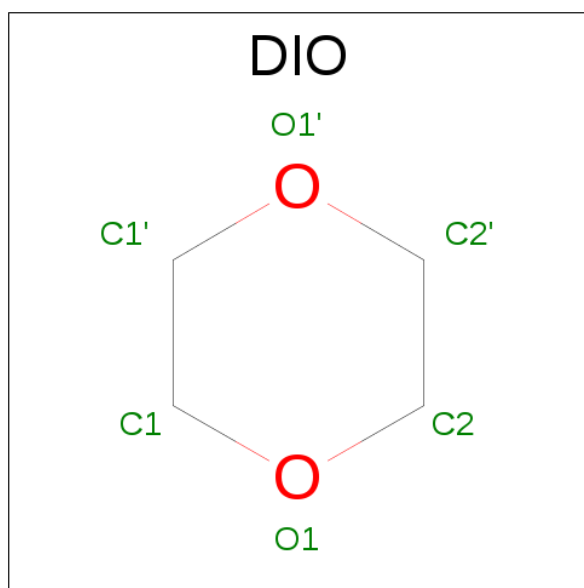
- Molecule 1 is a protein called 6-phosphofructo-2-kinase/fructose-2,6-bisphosphatase 2.

Mol	Chain	Residues	Atoms								ZeroOcc	AltConf	Trace
1	A	424	Total	C	H	N	O	P	S		0	0	0
			6912	2208	3451	587	648	1	17				

There is a discrepancy between the modelled and reference sequences:

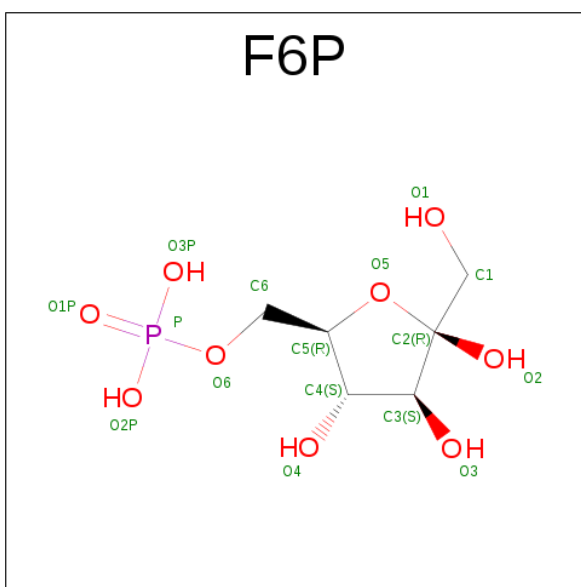
Chain	Residue	Modelled	Actual	Comment	Reference
A	457	ASN	SER	conflict	UNP P26285

- Molecule 2 is 1,4-DIETHYLENE DIOXIDE (three-letter code: DIO) (formula: C<sub>4</sub>H<sub>8</sub>O<sub>2</sub>).



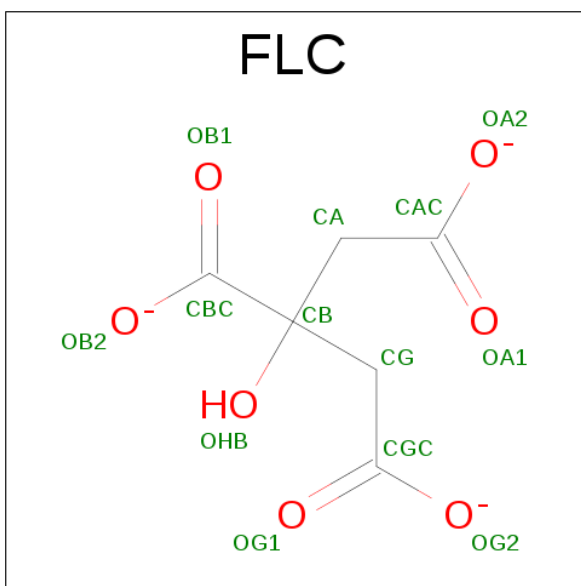
Mol	Chain	Residues	Atoms				ZeroOcc	AltConf
2	A	1	Total	C	H	O	0	0
			14	4	8	2		

- Molecule 3 is FRUCTOSE-6-PHOSPHATE (three-letter code: F6P) (formula: C<sub>6</sub>H<sub>13</sub>O<sub>9</sub>P).



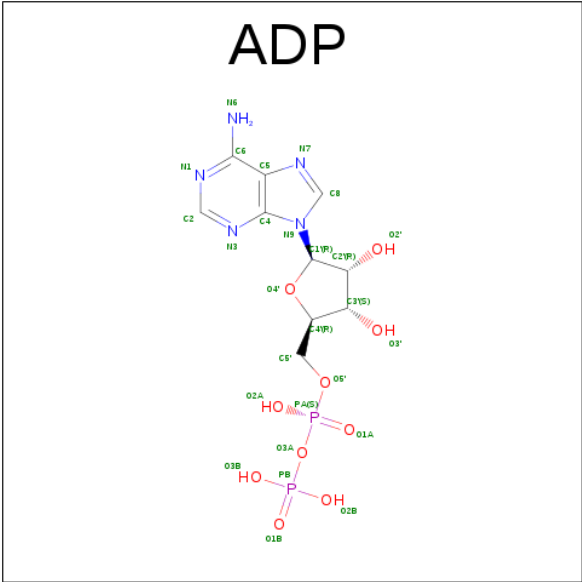
Mol	Chain	Residues	Atoms				ZeroOcc	AltConf
3	A	1	Total	C	H	O	P	0
			27	6	11	9	1	

- Molecule 4 is CITRATE ANION (three-letter code: FLC) (formula:  $C_6H_5O_7$ ).



Mol	Chain	Residues	Atoms				ZeroOcc	AltConf
4	A	1	Total	C	H	O	0	0
			18	6	5	7		

- Molecule 5 is ADENOSINE-5'-DIPHOSPHATE (three-letter code: ADP) (formula:  $C_{10}H_{15}N_5O_{10}P_2$ ).



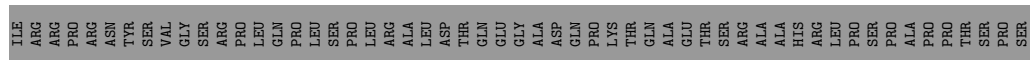
Mol	Chain	Residues	Atoms					ZeroOcc	AltConf	
5	A	1	Total	C	H	N	O	P	0	0
			39	10	12	5	10	2		

- Molecule 6 is water.

Mol	Chain	Residues	Atoms		ZeroOcc	AltConf
6	A	505	Total	O	0	0
			505	505		



- Molecule 1: 6-phosphofructo-2-kinase/fructose-2,6-bisphosphatase 2



## 4 Data and refinement statistics

Property	Value	Source
Space group	C 2 2 21	Depositor
Cell constants a, b, c, $\alpha$ , $\beta$ , $\gamma$	82.12Å 169.48Å 85.25Å 90.00° 90.00° 90.00°	Depositor
Resolution (Å)	10.00 – 1.82 46.54 – 1.82	Depositor EDS
% Data completeness (in resolution range)	97.2 (10.00-1.82) 97.2 (46.54-1.82)	Depositor EDS
$R_{merge}$	(Not available)	Depositor
$R_{sym}$	(Not available)	Depositor
$\langle I/\sigma(I) \rangle$ <sup>1</sup>	2.62 (at 1.82Å)	Xtriage
Refinement program	PHENIX (1.10pre_2100: ???)	Depositor
R, $R_{free}$	0.139 , 0.162 0.139 , 0.162	Depositor DCC
$R_{free}$ test set	2638 reflections (5.06%)	DCC
Wilson B-factor (Å <sup>2</sup> )	19.2	Xtriage
Anisotropy	0.231	Xtriage
Bulk solvent $k_{sol}$ (e/Å <sup>3</sup> ), $B_{sol}$ (Å <sup>2</sup> )	0.40 , 52.4	EDS
L-test for twinning <sup>2</sup>	$\langle  L  \rangle = 0.49$ , $\langle L^2 \rangle = 0.33$	Xtriage
Estimated twinning fraction	No twinning to report.	Xtriage
$F_o, F_c$ correlation	0.97	EDS
Total number of atoms	7515	wwPDB-VP
Average B, all atoms (Å <sup>2</sup> )	27.0	wwPDB-VP

Xtriage's analysis on translational NCS is as follows: *The largest off-origin peak in the Patterson function is 4.14% of the height of the origin peak. No significant pseudotranslation is detected.*

<sup>1</sup>Intensities estimated from amplitudes.

<sup>2</sup>Theoretical values of  $\langle |L| \rangle$ ,  $\langle L^2 \rangle$  for acentric reflections are 0.5, 0.333 respectively for untwinned datasets, and 0.375, 0.2 for perfectly twinned datasets.

## 5 Model quality [i](#)

### 5.1 Standard geometry [i](#)

Bond lengths and bond angles in the following residue types are not validated in this section: FLC, DIO, NEP, ADP, F6P

The Z score for a bond length (or angle) is the number of standard deviations the observed value is removed from the expected value. A bond length (or angle) with  $|Z| > 5$  is considered an outlier worth inspection. RMSZ is the root-mean-square of all Z scores of the bond lengths (or angles).

Mol	Chain	Bond lengths		Bond angles	
		RMSZ	$\# Z  > 5$	RMSZ	$\# Z  > 5$
1	A	0.46	0/3517	0.63	1/4755 (0.0%)

There are no bond length outliers.

All (1) bond angle outliers are listed below:

Mol	Chain	Res	Type	Atoms	Z	Observed( $^{\circ}$ )	Ideal( $^{\circ}$ )
1	A	383	ARG	NE-CZ-NH1	6.37	123.49	120.30

There are no chirality outliers.

There are no planarity outliers.

### 5.2 Too-close contacts [i](#)

In the following table, the Non-H and H(model) columns list the number of non-hydrogen atoms and hydrogen atoms in the chain respectively. The H(added) column lists the number of hydrogen atoms added and optimized by MolProbity. The Clashes column lists the number of clashes within the asymmetric unit, whereas Symm-Clashes lists symmetry related clashes.

Mol	Chain	Non-H	H(model)	H(added)	Clashes	Symm-Clashes
1	A	3461	3451	3451	24	0
2	A	6	8	8	0	0
3	A	16	11	11	0	0
4	A	13	5	5	0	0
5	A	27	12	11	0	0
6	A	505	0	0	11	3
All	All	4028	3487	3486	24	3

The all-atom clashscore is defined as the number of clashes found per 1000 atoms (including hydrogen atoms). The all-atom clashscore for this structure is 3.



All (24) close contacts within the same asymmetric unit are listed below, sorted by their clash magnitude.

Atom-1	Atom-2	Interatomic distance (Å)	Clash overlap (Å)
1:A:293:GLN:O	6:A:701:HOH:O	1.85	0.92
1:A:37:ASN:HB2	6:A:704:HOH:O	1.84	0.78
1:A:160:ASP:OD1	6:A:702:HOH:O	2.05	0.74
1:A:105:GLN:NE2	6:A:703:HOH:O	2.21	0.74
1:A:37:ASN:N	6:A:704:HOH:O	2.22	0.73
1:A:262:GLU:HG2	6:A:1128:HOH:O	1.90	0.70
1:A:293:GLN:CA	6:A:701:HOH:O	2.52	0.57
1:A:37:ASN:CB	6:A:704:HOH:O	2.46	0.55
1:A:183:ASN:ND2	1:A:185:GLU:OE1	2.45	0.50
1:A:36:THR:C	6:A:704:HOH:O	2.49	0.49
1:A:207:PRO:HG3	1:A:227:LEU:HD21	1.94	0.49
1:A:293:GLN:HB3	6:A:701:HOH:O	2.12	0.49
1:A:174:VAL:HA	1:A:187:VAL:HG11	1.95	0.48
1:A:83:VAL:CG1	1:A:87:LYS:HE2	2.44	0.48
1:A:83:VAL:C	1:A:84:LYS:HG2	2.37	0.45
1:A:282:PHE:CE1	1:A:419:HIS:HA	2.52	0.45
1:A:396:MET:CE	1:A:422:PHE:CD1	3.00	0.44
1:A:292:GLU:OE2	1:A:293:GLN:NE2	2.51	0.43
1:A:170:LEU:HD22	1:A:184:ARG:HD3	2.03	0.41
1:A:105:GLN:HG3	6:A:775:HOH:O	2.20	0.41
1:A:378:ILE:HD12	1:A:402:TYR:CD2	2.56	0.41
1:A:258:NEP:HE1	1:A:264:ASN:OD1	2.21	0.40
1:A:70:THR:HA	1:A:125:ILE:O	2.22	0.40
1:A:182:ARG:HG3	1:A:187:VAL:HG23	2.02	0.40

All (3) symmetry-related close contacts are listed below. The label for Atom-2 includes the symmetry operator and encoded unit-cell translations to be applied.

Atom-1	Atom-2	Interatomic distance (Å)	Clash overlap (Å)
6:A:970:HOH:O	6:A:970:HOH:O[4_566]	1.67	0.53
6:A:1193:HOH:O	6:A:1193:HOH:O[3_655]	1.85	0.35
6:A:1071:HOH:O	6:A:1124:HOH:O[6_555]	2.03	0.17

## 5.3 Torsion angles

### 5.3.1 Protein backbone

In the following table, the Percentiles column shows the percent Ramachandran outliers of the chain as a percentile score with respect to all X-ray entries followed by that with respect to entries of similar resolution.

The Analysed column shows the number of residues for which the backbone conformation was analysed, and the total number of residues.

Mol	Chain	Analysed	Favoured	Allowed	Outliers	Percentiles	
1	A	421/531 (79%)	412 (98%)	9 (2%)	0	100	100

There are no Ramachandran outliers to report.

### 5.3.2 Protein sidechains

In the following table, the Percentiles column shows the percent sidechain outliers of the chain as a percentile score with respect to all X-ray entries followed by that with respect to entries of similar resolution.

The Analysed column shows the number of residues for which the sidechain conformation was analysed, and the total number of residues.

Mol	Chain	Analysed	Rotameric	Outliers	Percentiles	
1	A	380/476 (80%)	374 (98%)	6 (2%)	68	57

All (6) residues with a non-rotameric sidechain are listed below:

Mol	Chain	Res	Type
1	A	84	LYS
1	A	85	SER
1	A	182	ARG
1	A	184	ARG
1	A	251	ARG
1	A	351	LEU

Some sidechains can be flipped to improve hydrogen bonding and reduce clashes. There are no such sidechains identified.

### 5.3.3 RNA

There are no RNA molecules in this entry.

## 5.4 Non-standard residues in protein, DNA, RNA chains ⓘ

1 non-standard protein/DNA/RNA residue is modelled in this entry.

In the following table, the Counts columns list the number of bonds (or angles) for which Mogul statistics could be retrieved, the number of bonds (or angles) that are observed in the model and the number of bonds (or angles) that are defined in the chemical component dictionary. The Link column lists molecule types, if any, to which the group is linked. The Z score for a bond length (or angle) is the number of standard deviations the observed value is removed from the expected value. A bond length (or angle) with  $|Z| > 2$  is considered an outlier worth inspection. RMSZ is the root-mean-square of all Z scores of the bond lengths (or angles).

Mol	Type	Chain	Res	Link	Bond lengths			Bond angles		
					Counts	RMSZ	$\# Z  > 2$	Counts	RMSZ	$\# Z  > 2$
1	NEP	A	258	1	11,14,15	1.93	1 (9%)	7,20,22	1.64	1 (14%)

In the following table, the Chirals column lists the number of chiral outliers, the number of chiral centers analysed, the number of these observed in the model and the number defined in the chemical component dictionary. Similar counts are reported in the Torsion and Rings columns. '-' means no outliers of that kind were identified.

Mol	Type	Chain	Res	Link	Chirals	Torsions	Rings
1	NEP	A	258	1	-	0/4/12/14	0/1/1/1

All (1) bond length outliers are listed below:

Mol	Chain	Res	Type	Atoms	Z	Observed(Å)	Ideal(Å)
1	A	258	NEP	CD2-CG	5.05	1.43	1.36

All (1) bond angle outliers are listed below:

Mol	Chain	Res	Type	Atoms	Z	Observed(°)	Ideal(°)
1	A	258	NEP	CB-CA-C	-3.86	103.97	111.41

There are no chirality outliers.

There are no torsion outliers.

There are no ring outliers.

1 monomer is involved in 1 short contact:

Mol	Chain	Res	Type	Clashes	Symm-Clashes
1	A	258	NEP	1	0

## 5.5 Carbohydrates [i](#)

There are no carbohydrates in this entry.

## 5.6 Ligand geometry [i](#)

4 ligands are modelled in this entry.

In the following table, the Counts columns list the number of bonds (or angles) for which Mogul statistics could be retrieved, the number of bonds (or angles) that are observed in the model and the number of bonds (or angles) that are defined in the chemical component dictionary. The Link column lists molecule types, if any, to which the group is linked. The Z score for a bond length (or angle) is the number of standard deviations the observed value is removed from the expected value. A bond length (or angle) with  $|Z| > 2$  is considered an outlier worth inspection. RMSZ is the root-mean-square of all Z scores of the bond lengths (or angles).

Mol	Type	Chain	Res	Link	Bond lengths			Bond angles		
					Counts	RMSZ	# $ Z  > 2$	Counts	RMSZ	# $ Z  > 2$
2	DIO	A	601	-	6,6,6	0.65	0	6,6,6	0.47	0
3	F6P	A	602	-	15,16,16	0.92	1 (6%)	17,25,25	0.63	0
4	FLC	A	603	-	3,12,12	1.40	0	3,17,17	3.07	1 (33%)
5	ADP	A	604	-	25,29,29	2.78	9 (36%)	24,45,45	3.24	6 (25%)

In the following table, the Chirals column lists the number of chiral outliers, the number of chiral centers analysed, the number of these observed in the model and the number defined in the chemical component dictionary. Similar counts are reported in the Torsion and Rings columns. '-' means no outliers of that kind were identified.

Mol	Type	Chain	Res	Link	Chirals	Torsions	Rings
2	DIO	A	601	-	-	0/0/6/6	0/1/1/1
3	F6P	A	602	-	-	0/9/28/28	0/1/1/1
4	FLC	A	603	-	-	0/6/16/16	0/0/0/0
5	ADP	A	604	-	-	0/12/32/32	0/3/3/3

All (10) bond length outliers are listed below:

Mol	Chain	Res	Type	Atoms	Z	Observed(Å)	Ideal(Å)
5	A	604	ADP	C3'-C4'	-7.05	1.34	1.53
5	A	604	ADP	O4'-C1'	-5.56	1.33	1.41
5	A	604	ADP	O2'-C2'	-3.16	1.35	1.43
5	A	604	ADP	C5-C4	-2.56	1.34	1.40
5	A	604	ADP	O3'-C3'	2.07	1.47	1.43
5	A	604	ADP	C2-N1	2.60	1.38	1.33
3	A	602	F6P	O2-C2	2.83	1.45	1.40

*Continued on next page...*

*Continued from previous page...*

Mol	Chain	Res	Type	Atoms	Z	Observed(Å)	Ideal(Å)
5	A	604	ADP	C6-N6	3.22	1.47	1.34
5	A	604	ADP	C2-N3	3.69	1.38	1.32
5	A	604	ADP	O4'-C4'	6.77	1.60	1.45

All (7) bond angle outliers are listed below:

Mol	Chain	Res	Type	Atoms	Z	Observed(°)	Ideal(°)
5	A	604	ADP	N3-C2-N1	-10.10	120.06	128.86
5	A	604	ADP	C1'-N9-C4	-8.53	111.91	126.64
5	A	604	ADP	N6-C6-N1	-5.57	107.72	118.77
4	A	603	FLC	CB-CA-CAC	-5.26	106.74	114.95
5	A	604	ADP	C4'-O4'-C1'	-2.23	107.39	109.77
5	A	604	ADP	C2'-C3'-C4'	2.29	107.08	102.62
5	A	604	ADP	C5-C6-N6	4.90	130.46	120.47

There are no chirality outliers.

There are no torsion outliers.

There are no ring outliers.

No monomer is involved in short contacts.

## 5.7 Other polymers [i](#)

There are no such residues in this entry.

## 5.8 Polymer linkage issues [i](#)

There are no chain breaks in this entry.

## 6 Fit of model and data [i](#)

### 6.1 Protein, DNA and RNA chains [i](#)

In the following table, the column labelled ‘#RSRZ> 2’ contains the number (and percentage) of RSRZ outliers, followed by percent RSRZ outliers for the chain as percentile scores relative to all X-ray entries and entries of similar resolution. The OWAB column contains the minimum, median, 95<sup>th</sup> percentile and maximum values of the occupancy-weighted average B-factor per residue. The column labelled ‘Q< 0.9’ lists the number of (and percentage) of residues with an average occupancy less than 0.9.

Mol	Chain	Analysed	<RSRZ>	#RSRZ>2	OWAB(Å <sup>2</sup> )	Q<0.9
1	A	423/531 (79%)	-0.36	10 (2%) 59 55	10, 20, 51, 94	0

All (10) RSRZ outliers are listed below:

Mol	Chain	Res	Type	RSRZ
1	A	451	THR	8.1
1	A	28	LYS	3.5
1	A	31	TRP	3.5
1	A	29	CYS	3.4
1	A	34	TYR	3.3
1	A	450	PRO	3.3
1	A	351	LEU	2.7
1	A	184	ARG	2.4
1	A	37	ASN	2.2
1	A	30	SER	2.1

### 6.2 Non-standard residues in protein, DNA, RNA chains [i](#)

In the following table, the Atoms column lists the number of modelled atoms in the group and the number defined in the chemical component dictionary. LLDF column lists the quality of electron density of the group with respect to its neighbouring residues in protein, DNA or RNA chains. The B-factors column lists the minimum, median, 95<sup>th</sup> percentile and maximum values of B factors of atoms in the group. The column labelled ‘Q< 0.9’ lists the number of atoms with occupancy less than 0.9.

Mol	Type	Chain	Res	Atoms	RSCC	RSR	LLDF	B-factors(Å <sup>2</sup> )	Q<0.9
1	NEP	A	258	14/15	0.98	0.08	-	10,12,21,21	0

### 6.3 Carbohydrates [i](#)

There are no carbohydrates in this entry.

## 6.4 Ligands [i](#)

In the following table, the Atoms column lists the number of modelled atoms in the group and the number defined in the chemical component dictionary. LLDF column lists the quality of electron density of the group with respect to its neighbouring residues in protein, DNA or RNA chains. The B-factors column lists the minimum, median, 95<sup>th</sup> percentile and maximum values of B factors of atoms in the group. The column labelled 'Q< 0.9' lists the number of atoms with occupancy less than 0.9.

Mol	Type	Chain	Res	Atoms	RSCC	RSR	LLDF	B-factors(Å <sup>2</sup> )	Q<0.9
2	DIO	A	601	6/6	0.89	0.22	6.17	36,50,61,61	0
4	FLC	A	603	13/13	0.92	0.13	3.68	21,36,50,50	0
5	ADP	A	604	27/27	0.99	0.07	-0.17	13,17,23,25	0
3	F6P	A	602	16/16	0.99	0.06	-0.62	13,16,22,24	0

## 6.5 Other polymers [i](#)

There are no such residues in this entry.