



# Full wwPDB X-ray Structure Validation Report ⓘ

Feb 14, 2017 – 09:07 am GMT

PDB ID : 2HSE  
Title : Structure of D236A E. coli Aspartate Transcarbamoylase in the presence of phosphonoacetamide and l-Aspartate at 2.60 Å resolution  
Authors : Wang, J.; Kantrowitz, E.R.  
Deposited on : 2006-07-21  
Resolution : 2.60 Å(reported)

This is a Full wwPDB X-ray Structure Validation Report for a publicly released PDB entry.

We welcome your comments at [validation@mail.wwpdb.org](mailto:validation@mail.wwpdb.org)

A user guide is available at

<http://wwpdb.org/validation/2016/XrayValidationReportHelp>

with specific help available everywhere you see the ⓘ symbol.

---

The following versions of software and data (see [references ⓘ](#)) were used in the production of this report:

MolProbity : 4.02b-467  
Mogul : 1.7.2 (RC1), CSD as538be (2017)  
Xtriage (Phenix) : 1.9-1692  
EDS : trunk28620  
Percentile statistics : 20161228.v01 (using entries in the PDB archive December 28th 2016)  
Refmac : 5.8.0135  
CCP4 : 6.5.0  
Ideal geometry (proteins) : Engh & Huber (2001)  
Ideal geometry (DNA, RNA) : Parkinson et al. (1996)  
Validation Pipeline (wwPDB-VP) : recalc28949

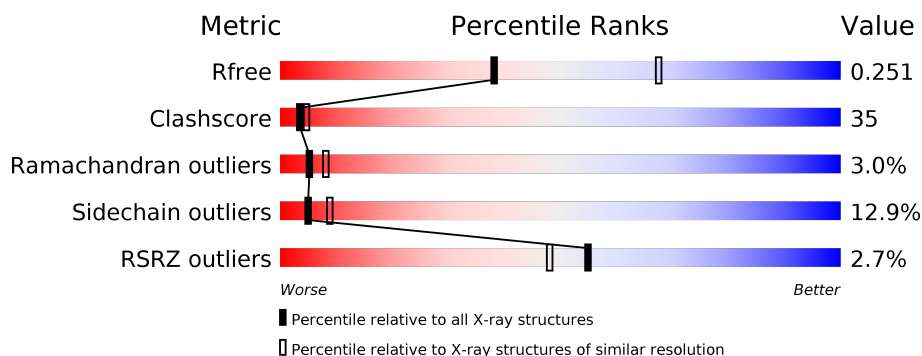
# 1 Overall quality at a glance

The following experimental techniques were used to determine the structure:

## *X-RAY DIFFRACTION*

The reported resolution of this entry is 2.60 Å.

Percentile scores (ranging between 0-100) for global validation metrics of the entry are shown in the following graphic. The table shows the number of entries on which the scores are based.



Metric	Whole archive (#Entries)	Similar resolution (#Entries, resolution range(Å))
$R_{free}$	100719	2542 (2.60-2.60)
Clashscore	112137	2895 (2.60-2.60)
Ramachandran outliers	110173	2848 (2.60-2.60)
Sidechain outliers	110143	2848 (2.60-2.60)
RSRZ outliers	101464	2550 (2.60-2.60)

The table below summarises the geometric issues observed across the polymeric chains and their fit to the electron density. The red, orange, yellow and green segments on the lower bar indicate the fraction of residues that contain outliers for  $\geq 3$ , 2, 1 and 0 types of geometric quality criteria. A grey segment represents the fraction of residues that are not modelled. The numeric value for each fraction is indicated below the corresponding segment, with a dot representing fractions  $\leq 5\%$ . The upper red bar (where present) indicates the fraction of residues that have poor fit to the electron density. The numeric value is given above the bar.

Mol	Chain	Length	Quality of chain
1	A	310	<div> <div>63%</div> <div>31%</div> <div>6%</div> </div>
1	C	310	<div> <div>54%</div> <div>35%</div> <div>10%</div> <div>•</div> </div>
2	B	153	<div> <div>4%</div> <div>39%</div> <div>40%</div> <div>16%</div> <div>•</div> <div>5%</div> </div>
2	D	153	<div> <div>8%</div> <div>28%</div> <div>54%</div> <div>12%</div> <div>•</div> <div>5%</div> </div>

The following table lists non-polymeric compounds, carbohydrate monomers and non-standard residues in protein, DNA, RNA chains that are outliers for geometric or electron-density-fit crite-

ria:

Mol	Type	Chain	Res	Chirality	Geometry	Clashes	Electron density
5	ASP	A	813	-	-	X	X
5	ASP	C	912	-	-	-	X

## 2 Entry composition

There are 7 unique types of molecules in this entry. The entry contains 7509 atoms, of which 0 are hydrogens and 0 are deuteriums.

In the tables below, the ZeroOcc column contains the number of atoms modelled with zero occupancy, the AltConf column contains the number of residues with at least one atom in alternate conformation and the Trace column contains the number of residues modelled with at most 2 atoms.

- Molecule 1 is a protein called Aspartate carbamoyltransferase catalytic chain.

Mol	Chain	Residues	Atoms					ZeroOcc	AltConf	Trace
1	A	310	Total	C	N	O	S	0	0	0
			2412	1526	423	454	9			
1	C	310	Total	C	N	O	S	0	0	0
			2412	1526	423	454	9			

There are 2 discrepancies between the modelled and reference sequences:

Chain	Residue	Modelled	Actual	Comment	Reference
A	236	ALA	ASP	ENGINEERED	UNP P0A786
C	236	ALA	ASP	ENGINEERED	UNP P0A786

- Molecule 2 is a protein called Aspartate carbamoyltransferase regulatory chain.

Mol	Chain	Residues	Atoms					ZeroOcc	AltConf	Trace
2	B	146	Total	C	N	O	S	0	0	0
			1143	717	202	219	5			
2	D	146	Total	C	N	O	S	0	0	0
			1143	717	202	219	5			

There are 2 discrepancies between the modelled and reference sequences:

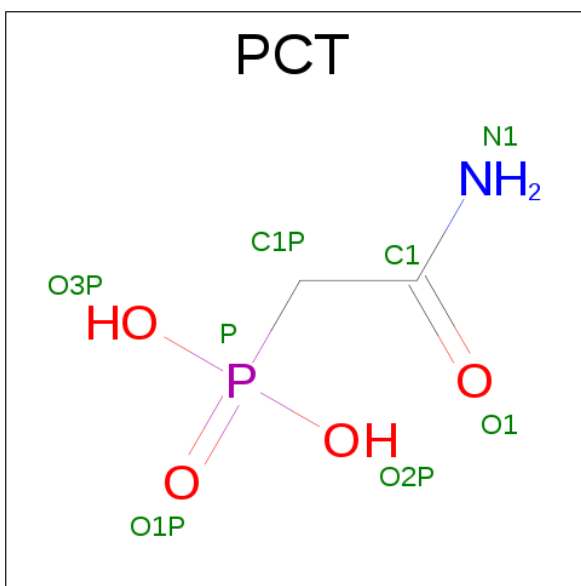
Chain	Residue	Modelled	Actual	Comment	Reference
B	1	MET	-	INITIATING METHIONINE	UNP P0A7F3
D	1	MET	-	INITIATING METHIONINE	UNP P0A7F3

- Molecule 3 is PHOSPHATE ION (three-letter code: PO4) (formula: O<sub>4</sub>P).



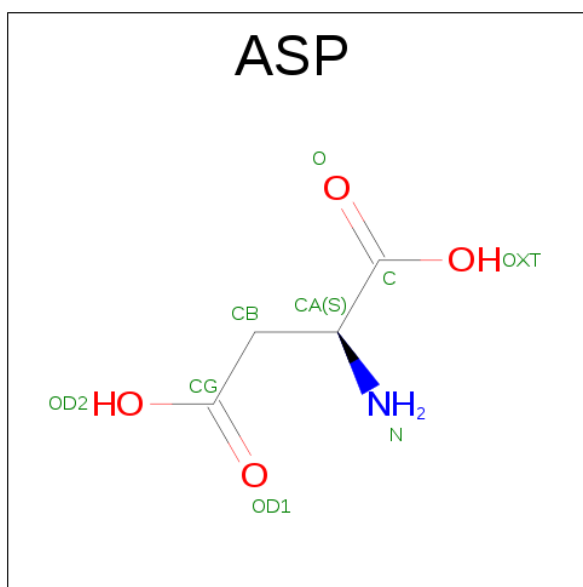
Mol	Chain	Residues	Atoms			ZeroOcc	AltConf
3	A	1	Total	O	P	0	0
			5	4	1		

- Molecule 4 is PHOSPHONOACETAMIDE (three-letter code: PCT) (formula:  $C_2H_6NO_4P$ ).



Mol	Chain	Residues	Atoms					ZeroOcc	AltConf
4	A	1	Total	C	N	O	P	0	0
			8	2	1	4	1		
4	C	1	Total	C	N	O	P	0	0
			8	2	1	4	1		

- Molecule 5 is ASPARTIC ACID (three-letter code: ASP) (formula:  $C_4H_7NO_4$ ).



Mol	Chain	Residues	Atoms				ZeroOcc	AltConf
5	A	1	Total	C	N	O	0	0
			9	4	1	4		
5	A	1	Total	C	N	O	0	0
			9	4	1	4		
5	C	1	Total	C	N	O	0	0
			9	4	1	4		

- Molecule 6 is ZINC ION (three-letter code: ZN) (formula: Zn).

Mol	Chain	Residues	Atoms		ZeroOcc	AltConf
6	B	1	Total	Zn	0	0
			1	1		
6	D	1	Total	Zn	0	0
			1	1		

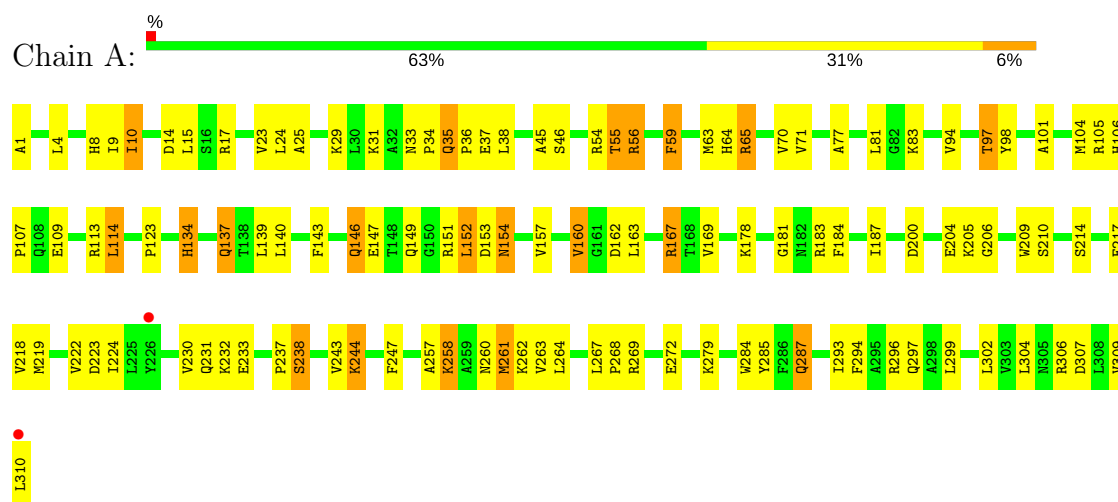
- Molecule 7 is water.

Mol	Chain	Residues	Atoms		ZeroOcc	AltConf
7	A	134	Total	O	0	0
			134	134		
7	B	57	Total	O	0	0
			57	57		
7	C	123	Total	O	0	0
			123	123		
7	D	35	Total	O	0	0
			35	35		

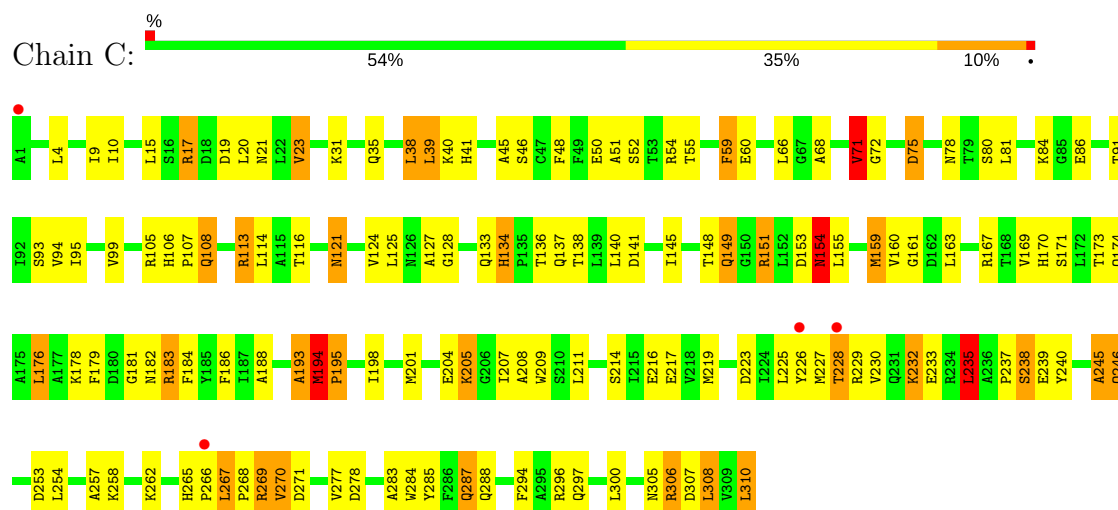
### 3 Residue-property plots

These plots are drawn for all protein, RNA and DNA chains in the entry. The first graphic for a chain summarises the proportions of the various outlier classes displayed in the second graphic. The second graphic shows the sequence view annotated by issues in geometry and electron density. Residues are color-coded according to the number of geometric quality criteria for which they contain at least one outlier: green = 0, yellow = 1, orange = 2 and red = 3 or more. A red dot above a residue indicates a poor fit to the electron density ( $RSRZ > 2$ ). Stretches of 2 or more consecutive residues without any outlier are shown as a green connector. Residues present in the sample, but not in the model, are shown in grey.

- Molecule 1: Aspartate carbamoyltransferase catalytic chain

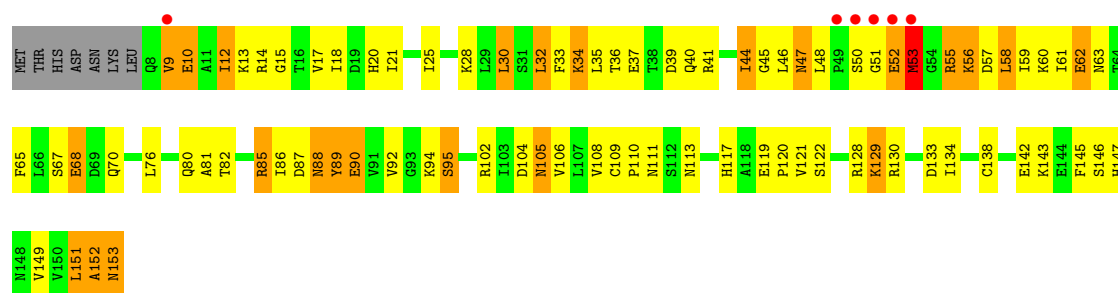


- Molecule 1: Aspartate carbamoyltransferase catalytic chain

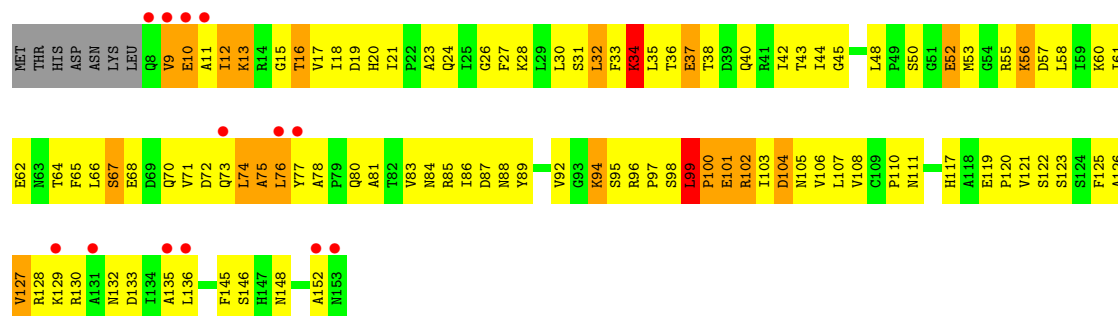


- Molecule 2: Aspartate carbamoyltransferase regulatory chain





• Molecule 2: Aspartate carbamoyltransferase regulatory chain





## 4 Data and refinement statistics

Property	Value	Source
Space group	P 3 2 1	Depositor
Cell constants a, b, c, $\alpha$ , $\beta$ , $\gamma$	121.08Å 121.08Å 155.24Å 90.00° 90.00° 120.00°	Depositor
Resolution (Å)	30.00 – 2.60 29.71 – 2.59	Depositor EDS
% Data completeness (in resolution range)	(Not available) (30.00-2.60) 96.5 (29.71-2.59)	Depositor EDS
$R_{merge}$	0.10	Depositor
$R_{sym}$	(Not available)	Depositor
$\langle I/\sigma(I) \rangle$ <sup>1</sup>	1.04 (at 2.57Å)	Xtriage
Refinement program	CNS	Depositor
R, $R_{free}$	0.209 , 0.254 0.208 , 0.251	Depositor DCC
$R_{free}$ test set	4005 reflections (10.07%)	DCC
Wilson B-factor (Å <sup>2</sup> )	64.2	Xtriage
Anisotropy	0.246	Xtriage
Bulk solvent $k_{sol}$ (e/Å <sup>3</sup> ), $B_{sol}$ (Å <sup>2</sup> )	0.28 , 47.3	EDS
L-test for twinning <sup>2</sup>	$\langle  L  \rangle = 0.48$ , $\langle L^2 \rangle = 0.31$	Xtriage
Estimated twinning fraction	0.029 for -h,-k,l	Xtriage
$F_o, F_c$ correlation	0.95	EDS
Total number of atoms	7509	wwPDB-VP
Average B, all atoms (Å <sup>2</sup> )	72.0	wwPDB-VP

Xtriage's analysis on translational NCS is as follows: *The largest off-origin peak in the Patterson function is 5.12% of the height of the origin peak. No significant pseudotranslation is detected.*

<sup>1</sup>Intensities estimated from amplitudes.

<sup>2</sup>Theoretical values of  $\langle |L| \rangle$ ,  $\langle L^2 \rangle$  for acentric reflections are 0.5, 0.333 respectively for untwinned datasets, and 0.375, 0.2 for perfectly twinned datasets.

## 5 Model quality [i](#)

### 5.1 Standard geometry [i](#)

Bond lengths and bond angles in the following residue types are not validated in this section: ZN, PO4, PCT

The Z score for a bond length (or angle) is the number of standard deviations the observed value is removed from the expected value. A bond length (or angle) with  $|Z| > 5$  is considered an outlier worth inspection. RMSZ is the root-mean-square of all Z scores of the bond lengths (or angles).

Mol	Chain	Bond lengths		Bond angles	
		RMSZ	$\# Z  > 5$	RMSZ	$\# Z  > 5$
1	A	0.43	0/2458	0.72	0/3335
1	C	0.40	0/2458	0.70	2/3335 (0.1%)
2	B	0.48	0/1160	0.81	2/1568 (0.1%)
2	D	0.34	0/1160	0.67	0/1568
All	All	0.42	0/7236	0.72	4/9806 (0.0%)

There are no bond length outliers.

All (4) bond angle outliers are listed below:

Mol	Chain	Res	Type	Atoms	Z	Observed(°)	Ideal(°)
2	B	51	GLY	N-CA-C	-6.99	95.62	113.10
1	C	235	LEU	CA-CB-CG	5.88	128.82	115.30
2	B	53	MET	N-CA-C	-5.13	97.15	111.00
1	C	193	ALA	N-CA-C	5.03	124.57	111.00

There are no chirality outliers.

There are no planarity outliers.

### 5.2 Too-close contacts [i](#)

In the following table, the Non-H and H(model) columns list the number of non-hydrogen atoms and hydrogen atoms in the chain respectively. The H(added) column lists the number of hydrogen atoms added and optimized by MolProbity. The Clashes column lists the number of clashes within the asymmetric unit, whereas Symm-Clashes lists symmetry related clashes.

Mol	Chain	Non-H	H(model)	H(added)	Clashes	Symm-Clashes
1	A	2412	0	2423	120	0
1	C	2412	0	2423	179	0
2	B	1143	0	1159	93	0

*Continued on next page...*

*Continued from previous page...*

Mol	Chain	Non-H	H(model)	H(added)	Clashes	Symm-Clashes
2	D	1143	0	1159	123	0
3	A	5	0	0	0	0
4	A	8	0	4	3	0
4	C	8	0	4	0	0
5	A	18	0	6	11	0
5	C	9	0	3	2	0
6	B	1	0	0	0	0
6	D	1	0	0	0	0
7	A	134	0	0	32	0
7	B	57	0	0	12	0
7	C	123	0	0	41	0
7	D	35	0	0	19	0
All	All	7509	0	7181	505	0

The all-atom clashscore is defined as the number of clashes found per 1000 atoms (including hydrogen atoms). The all-atom clashscore for this structure is 35.

All (505) close contacts within the same asymmetric unit are listed below, sorted by their clash magnitude.

Atom-1	Atom-2	Interatomic distance (Å)	Clash overlap (Å)
2:B:55:ARG:HB2	2:B:55:ARG:NH2	1.70	1.07
2:B:55:ARG:HH21	2:B:55:ARG:HB2	0.95	1.06
1:C:138:THR:HG22	7:C:317:HOH:O	1.58	1.02
1:A:31:LYS:HG3	7:A:436:HOH:O	1.62	0.98
1:A:54:ARG:HB3	5:A:813:ASP:HB2	1.45	0.97
1:C:113:ARG:HH11	1:C:113:ARG:HG3	1.27	0.96
2:D:99:LEU:HD23	2:D:99:LEU:H	1.31	0.96
1:C:10:ILE:HD11	1:C:116:THR:HG21	1.49	0.95
1:C:155:LEU:H	1:C:182:ASN:HD22	0.98	0.94
2:D:99:LEU:HG	2:D:129:LYS:HZ2	1.33	0.93
2:D:99:LEU:HG	2:D:129:LYS:NZ	1.83	0.92
1:A:167:ARG:HD2	5:A:812:ASP:OXT	1.70	0.91
1:C:265:HIS:HD2	1:C:267:LEU:H	1.13	0.91
1:C:193:ALA:O	1:C:194:MET:HB3	1.69	0.91
2:D:105:ASN:HB3	2:D:122:SER:HB3	1.52	0.90
1:C:235:LEU:HD22	7:C:386:HOH:O	1.73	0.89
1:C:45:ALA:HA	7:C:341:HOH:O	1.72	0.88
1:C:155:LEU:H	1:C:182:ASN:ND2	1.72	0.87
2:D:83:VAL:HG13	2:D:95:SER:HB2	1.54	0.87
1:C:265:HIS:CD2	1:C:267:LEU:H	1.93	0.87
2:B:55:ARG:HH21	2:B:55:ARG:CB	1.86	0.86

*Continued on next page...*

*Continued from previous page...*

Atom-1	Atom-2	Interatomic distance (Å)	Clash overlap (Å)
1:C:287:GLN:NE2	1:C:287:GLN:H	1.72	0.86
1:A:70:VAL:HB	7:A:383:HOH:O	1.77	0.85
2:D:16:THR:HG22	2:D:64:THR:O	1.77	0.85
2:D:108:VAL:HB	7:D:328:HOH:O	1.74	0.84
2:D:78:ALA:HB1	2:D:81:ALA:HB2	1.58	0.83
1:C:296:ARG:HB2	7:C:419:HOH:O	1.78	0.83
2:D:20:HIS:HA	2:D:53:MET:HE1	1.61	0.82
2:B:9:VAL:HG12	2:B:10:GLU:HG3	1.59	0.82
1:A:65:ARG:HB3	1:A:297:GLN:HE21	1.45	0.82
2:B:36:THR:HG22	7:B:275:HOH:O	1.78	0.82
2:B:109:CYS:HB2	7:B:155:HOH:O	1.78	0.82
1:C:94:VAL:HB	7:C:421:HOH:O	1.78	0.82
2:B:108:VAL:HG23	2:B:153:ASN:HB3	1.60	0.81
2:B:44:ILE:HD11	2:B:46:LEU:HD22	1.62	0.81
1:C:232:LYS:HD2	1:C:232:LYS:H	1.44	0.81
1:C:270:VAL:HG22	1:C:271:ASP:H	1.45	0.81
2:D:99:LEU:H	2:D:99:LEU:CD2	1.94	0.80
1:A:294:PHE:HA	7:A:398:HOH:O	1.81	0.79
1:A:219:MET:HE2	1:A:257:ALA:HB2	1.64	0.78
1:C:270:VAL:HG22	1:C:271:ASP:N	1.98	0.78
1:A:55:THR:HG21	1:A:105:ARG:NH1	1.99	0.78
2:D:27:PHE:HA	2:D:30:LEU:HD23	1.64	0.78
2:D:127:VAL:HB	7:D:305:HOH:O	1.84	0.78
1:A:205:LYS:HB3	7:A:361:HOH:O	1.84	0.78
1:C:183:ARG:HG2	1:C:208:ALA:HB3	1.64	0.77
2:D:102:ARG:HH21	2:D:104:ASP:HA	1.50	0.76
2:B:105:ASN:HB3	2:B:122:SER:HB3	1.67	0.76
2:D:101:GLU:HA	7:D:305:HOH:O	1.85	0.76
1:C:287:GLN:HE21	1:C:287:GLN:H	1.32	0.76
1:A:260:ASN:HA	7:A:395:HOH:O	1.86	0.75
1:A:140:LEU:HD21	5:A:813:ASP:HA	1.69	0.75
1:A:160:VAL:HB	1:A:187:ILE:HB	1.69	0.74
2:B:41:ARG:HH21	2:B:41:ARG:HB2	1.51	0.74
2:D:71:VAL:HB	7:D:320:HOH:O	1.87	0.74
2:B:108:VAL:CG2	2:B:153:ASN:HB3	2.18	0.73
2:B:44:ILE:HD12	2:B:45:GLY:N	2.02	0.73
1:C:31:LYS:HD3	1:C:294:PHE:CE2	2.23	0.73
2:D:97:PRO:O	2:D:99:LEU:HD22	1.87	0.73
1:A:9:ILE:HG13	1:A:299:LEU:HD11	1.71	0.73
1:C:155:LEU:N	1:C:182:ASN:HD22	1.81	0.73
2:B:9:VAL:HG12	2:B:10:GLU:CG	2.18	0.73

*Continued on next page...*

*Continued from previous page...*

Atom-1	Atom-2	Interatomic distance (Å)	Clash overlap (Å)
1:C:121:ASN:ND2	1:C:121:ASN:H	1.87	0.73
2:D:102:ARG:NH2	2:D:104:ASP:HA	2.04	0.73
1:C:50:GLU:C	7:C:332:HOH:O	2.27	0.73
1:A:104:MET:HE2	7:A:443:HOH:O	1.88	0.72
1:C:39:LEU:HD13	1:C:68:ALA:HB2	1.70	0.72
1:A:140:LEU:CD2	5:A:813:ASP:HA	2.19	0.72
1:A:23:VAL:HG11	1:A:139:LEU:HD13	1.70	0.72
2:D:75:ALA:HB1	2:D:99:LEU:HB3	1.70	0.71
1:A:154:ASN:HA	1:A:181:GLY:O	1.89	0.71
2:B:47:ASN:O	2:B:48:LEU:HD23	1.90	0.71
1:C:229:ARG:HH21	1:C:232:LYS:HE2	1.55	0.71
1:C:80:SER:HA	7:C:334:HOH:O	1.89	0.71
2:D:68:GLU:HA	7:D:320:HOH:O	1.90	0.71
1:C:207:ILE:HD12	1:C:208:ALA:H	1.55	0.71
1:A:35:GLN:HG3	7:A:442:HOH:O	1.89	0.71
2:D:106:VAL:HG22	7:D:173:HOH:O	1.90	0.70
1:A:287:GLN:HE21	1:A:287:GLN:H	1.40	0.70
1:C:237:PRO:HA	1:C:240:TYR:CE2	2.26	0.70
1:C:10:ILE:HD11	1:C:116:THR:CG2	2.21	0.69
1:C:145:ILE:HG23	7:C:424:HOH:O	1.90	0.69
2:B:142:GLU:HB3	7:B:265:HOH:O	1.92	0.69
1:C:214:SER:HB3	7:C:359:HOH:O	1.91	0.69
2:D:84:ASN:HB3	2:D:94:LYS:HA	1.75	0.69
1:A:94:VAL:O	1:A:97:THR:HB	1.93	0.69
1:C:159:MET:CE	1:C:169:VAL:HB	2.23	0.68
2:B:46:LEU:HD12	2:B:57:ASP:OD1	1.94	0.68
2:B:17:VAL:HG13	2:B:60:LYS:HG2	1.76	0.68
1:C:306:ARG:NH2	1:C:306:ARG:HB3	2.09	0.68
1:A:65:ARG:HB3	1:A:297:GLN:NE2	2.08	0.68
1:C:84:LYS:HG3	7:C:334:HOH:O	1.93	0.67
1:C:71:VAL:C	7:C:341:HOH:O	2.32	0.67
2:D:18:ILE:HG22	2:D:21:ILE:HD11	1.77	0.66
1:A:1:ALA:HA	1:A:306:ARG:HB2	1.76	0.66
2:B:9:VAL:HG12	2:B:10:GLU:N	2.10	0.66
2:B:44:ILE:HD11	2:B:46:LEU:CD2	2.24	0.66
1:C:159:MET:HE3	1:C:169:VAL:HB	1.76	0.66
1:C:194:MET:SD	7:C:418:HOH:O	2.54	0.66
1:C:151:ARG:HB2	7:C:423:HOH:O	1.96	0.66
2:D:9:VAL:O	2:D:10:GLU:HB2	1.95	0.66
1:C:194:MET:HE1	1:C:198:ILE:HG13	1.78	0.65
2:D:20:HIS:CA	2:D:53:MET:HE1	2.26	0.65

*Continued on next page...*

*Continued from previous page...*

Atom-1	Atom-2	Interatomic distance (Å)	Clash overlap (Å)
2:B:133:ASP:HB3	7:B:307:HOH:O	1.96	0.65
2:D:89:TYR:HB3	7:D:280:HOH:O	1.96	0.65
1:A:218:VAL:O	1:A:222:VAL:HG13	1.96	0.65
1:C:148:THR:HG21	1:C:262:LYS:HG2	1.77	0.65
2:D:100:PRO:HB2	7:D:212:HOH:O	1.96	0.65
1:C:50:GLU:OE2	1:C:107:PRO:HA	1.97	0.65
1:A:104:MET:HB2	7:A:443:HOH:O	1.97	0.64
1:C:113:ARG:HH11	1:C:113:ARG:CG	2.03	0.64
1:C:113:ARG:HG3	1:C:113:ARG:NH1	2.05	0.64
1:C:149:GLN:HB2	7:C:424:HOH:O	1.97	0.64
1:C:160:VAL:O	1:C:228:THR:HB	1.97	0.64
1:C:170:HIS:O	1:C:174:GLN:HG3	1.98	0.64
2:D:106:VAL:HG23	2:D:106:VAL:O	1.98	0.64
1:A:310:LEU:HG	7:A:423:HOH:O	1.99	0.63
1:A:205:LYS:HE2	7:A:319:HOH:O	1.98	0.63
1:A:296:ARG:HH22	5:A:813:ASP:HB3	1.62	0.63
1:A:149:GLN:HE21	1:A:223:ASP:HB3	1.63	0.63
1:A:59:PHE:O	1:A:63:MET:HG3	1.98	0.63
2:D:45:GLY:HA3	2:D:48:LEU:HD11	1.81	0.63
1:A:153:ASP:HB2	7:A:389:HOH:O	1.98	0.63
1:A:237:PRO:O	1:A:238:SER:HB3	1.99	0.63
1:C:167:ARG:NE	7:C:396:HOH:O	2.31	0.62
2:D:85:ARG:C	2:D:86:ILE:HD12	2.19	0.62
1:C:270:VAL:CG2	1:C:271:ASP:N	2.62	0.62
2:D:13:LYS:O	2:D:86:ILE:HG22	1.99	0.62
1:A:114:LEU:CD2	2:B:121:VAL:HG11	2.29	0.62
2:D:71:VAL:HG12	7:D:238:HOH:O	1.99	0.62
2:B:87:ASP:HB3	2:B:92:VAL:HG21	1.82	0.62
2:B:80:GLN:HB2	7:B:166:HOH:O	2.00	0.62
2:B:138:CYS:SG	7:B:155:HOH:O	2.55	0.61
1:A:287:GLN:NE2	1:A:287:GLN:H	1.98	0.61
1:A:97:THR:HG22	1:A:98:TYR:CD1	2.35	0.61
2:B:52:GLU:O	2:B:53:MET:CB	2.48	0.61
2:B:152:ALA:O	2:B:153:ASN:HB3	2.00	0.61
1:C:193:ALA:O	1:C:194:MET:CB	2.42	0.61
2:D:40:GLN:HG2	7:D:312:HOH:O	1.99	0.61
2:B:85:ARG:HB2	2:B:85:ARG:HH21	1.64	0.61
2:D:19:ASP:HA	2:D:58:LEU:HD12	1.82	0.61
2:B:21:ILE:O	2:B:56:LYS:HB2	2.01	0.61
1:A:55:THR:CG2	1:A:105:ARG:NH1	2.63	0.61
1:C:194:MET:CE	1:C:198:ILE:HG13	2.30	0.61

*Continued on next page...*

*Continued from previous page...*

Atom-1	Atom-2	Interatomic distance (Å)	Clash overlap (Å)
1:A:149:GLN:NE2	1:A:223:ASP:HB3	2.16	0.60
1:C:54:ARG:HH11	1:C:268:PRO:HD3	1.66	0.60
2:B:17:VAL:HG22	2:B:60:LYS:HG2	1.81	0.60
2:D:104:ASP:HB3	7:D:173:HOH:O	2.02	0.60
1:C:154:ASN:HA	1:C:181:GLY:C	2.21	0.60
2:D:34:LYS:O	2:D:37:GLU:HB2	2.01	0.60
1:C:297:GLN:HA	7:C:433:HOH:O	2.00	0.60
1:A:258:LYS:NZ	1:A:258:LYS:HB2	2.17	0.60
2:B:65:PHE:CD1	2:B:85:ARG:HG3	2.37	0.60
1:C:138:THR:HG21	1:C:171:SER:CB	2.31	0.60
2:D:36:THR:HB	7:D:161:HOH:O	2.01	0.60
2:D:50:SER:HB3	2:D:56:LYS:HG3	1.82	0.60
1:C:60:GLU:HG3	7:C:380:HOH:O	2.01	0.59
2:D:99:LEU:O	2:D:129:LYS:NZ	2.35	0.59
2:B:58:LEU:HD21	2:B:60:LYS:HE3	1.83	0.59
1:A:219:MET:CE	1:A:257:ALA:HB2	2.30	0.59
1:A:114:LEU:HD22	2:B:121:VAL:HG11	1.83	0.59
2:B:128:ARG:NH1	2:B:130:ARG:HG3	2.18	0.59
1:A:134:HIS:ND1	1:A:137:GLN:HB2	2.18	0.59
1:C:174:GLN:HA	1:C:201:MET:CE	2.33	0.59
2:D:128:ARG:NH1	7:D:302:HOH:O	2.34	0.59
2:B:128:ARG:HH12	2:B:130:ARG:HG3	1.66	0.59
1:C:233:GLU:N	7:C:386:HOH:O	2.35	0.59
2:B:108:VAL:CG2	2:B:153:ASN:CB	2.81	0.58
2:D:84:ASN:ND2	2:D:94:LYS:HD2	2.18	0.58
2:D:38:THR:OG1	2:D:40:GLN:HG3	2.04	0.58
1:C:106:HIS:CG	1:C:107:PRO:HD2	2.38	0.58
1:C:15:LEU:O	1:C:178:LYS:HE3	2.04	0.58
1:A:231:GLN:HG2	7:A:391:HOH:O	2.03	0.58
2:D:21:ILE:HB	2:D:57:ASP:HB2	1.84	0.58
1:A:284:TRP:HA	1:A:287:GLN:NE2	2.18	0.58
2:B:18:ILE:HG22	2:B:21:ILE:HD11	1.85	0.57
2:D:78:ALA:CB	2:D:81:ALA:HB2	2.30	0.57
1:A:134:HIS:CE1	1:A:137:GLN:HB2	2.39	0.57
2:D:96:ARG:HB3	2:D:97:PRO:HD2	1.86	0.57
1:C:19:ASP:O	1:C:23:VAL:HG12	2.04	0.57
1:C:262:LYS:HD3	7:C:426:HOH:O	2.04	0.56
2:B:67:SER:OG	2:B:70:GLN:HG3	2.04	0.56
1:A:101:ALA:HB2	1:A:304:LEU:HD21	1.86	0.56
2:B:111:ASN:O	2:B:117:HIS:HE1	1.88	0.56
1:C:232:LYS:C	7:C:386:HOH:O	2.43	0.56

*Continued on next page...*



*Continued from previous page...*

Atom-1	Atom-2	Interatomic distance (Å)	Clash overlap (Å)
2:D:70:GLN:C	2:D:72:ASP:H	2.07	0.56
2:D:128:ARG:HH21	2:D:128:ARG:HG2	1.69	0.56
2:B:41:ARG:HB2	2:B:41:ARG:NH2	2.19	0.56
1:C:159:MET:HE3	1:C:169:VAL:CB	2.35	0.56
2:D:84:ASN:HD22	2:D:94:LYS:HD2	1.70	0.56
1:C:35:GLN:HE22	1:C:310:LEU:HB3	1.70	0.56
2:D:31:SER:O	2:D:33:PHE:N	2.39	0.55
2:D:12:ILE:H	2:D:12:ILE:HD13	1.70	0.55
2:D:92:VAL:HG12	2:D:92:VAL:O	2.07	0.55
1:A:134:HIS:HB2	1:A:167:ARG:HD3	1.89	0.55
2:B:110:PRO:HG2	2:B:145:PHE:CE2	2.42	0.55
1:C:268:PRO:HD2	5:C:912:ASP:OD1	2.06	0.55
2:D:98:SER:O	2:D:100:PRO:HD3	2.07	0.55
2:D:31:SER:C	2:D:33:PHE:H	2.10	0.55
1:A:293:ILE:HD13	7:A:440:HOH:O	2.06	0.55
1:C:138:THR:HG21	1:C:171:SER:HB3	1.88	0.55
2:D:99:LEU:HG	2:D:129:LYS:HZ3	1.69	0.55
1:A:34:PRO:O	1:A:36:PRO:HD3	2.07	0.54
1:A:183:ARG:NH2	1:A:184:PHE:O	2.40	0.54
1:A:55:THR:CG2	4:A:811:PCT:O1	2.55	0.54
1:C:230:VAL:O	1:C:232:LYS:HD2	2.07	0.54
1:C:237:PRO:HA	1:C:240:TYR:CZ	2.42	0.54
1:C:300:LEU:HD12	7:C:433:HOH:O	2.08	0.54
2:B:33:PHE:O	2:B:35:LEU:HG	2.07	0.54
1:C:10:ILE:HD13	1:C:113:ARG:HA	1.89	0.54
1:C:154:ASN:HA	1:C:181:GLY:O	2.08	0.54
1:C:17:ARG:HD2	1:C:179:PHE:CE1	2.43	0.54
1:C:245:ALA:O	1:C:246:GLN:CB	2.55	0.54
2:B:25:ILE:O	2:B:28:LYS:HB2	2.07	0.54
2:B:20:HIS:HA	2:B:56:LYS:HG3	1.90	0.54
1:C:153:ASP:O	1:C:155:LEU:HG	2.08	0.53
1:C:160:VAL:HG21	1:C:227:MET:HE1	1.89	0.53
1:A:219:MET:HE1	1:A:261:MET:HE3	1.89	0.53
2:B:76:LEU:HD13	2:B:134:ILE:HD11	1.89	0.53
1:C:128:GLY:HA2	1:C:133:GLN:O	2.08	0.53
2:B:53:MET:SD	2:B:56:LYS:HB3	2.49	0.53
2:B:40:GLN:NE2	2:B:63:ASN:HD22	2.06	0.53
1:C:159:MET:HE2	7:C:418:HOH:O	2.08	0.53
1:C:176:LEU:HB3	1:C:184:PHE:HZ	1.73	0.53
1:A:258:LYS:HZ3	1:A:258:LYS:HB2	1.74	0.53
1:C:35:GLN:OE1	1:C:310:LEU:HD23	2.09	0.53

*Continued on next page...*



*Continued from previous page...*

Atom-1	Atom-2	Interatomic distance (Å)	Clash overlap (Å)
2:D:98:SER:C	2:D:100:PRO:HD3	2.29	0.53
1:A:24:LEU:HD22	1:A:143:PHE:HB2	1.92	0.52
2:B:50:SER:HB2	2:B:56:LYS:HD2	1.90	0.52
1:A:55:THR:HG22	4:A:811:PCT:O1	2.10	0.52
1:A:293:ILE:CD1	7:A:440:HOH:O	2.58	0.52
1:C:113:ARG:CG	1:C:113:ARG:NH1	2.64	0.52
1:A:205:LYS:HD3	7:A:339:HOH:O	2.08	0.52
2:D:110:PRO:HG2	2:D:145:PHE:CZ	2.45	0.52
2:B:95:SER:HA	7:B:169:HOH:O	2.10	0.52
1:C:308:LEU:N	1:C:308:LEU:CD2	2.73	0.52
1:A:269:ARG:O	1:A:269:ARG:HG3	2.10	0.52
2:B:33:PHE:O	2:B:35:LEU:N	2.42	0.52
2:B:18:ILE:CG2	2:B:21:ILE:HD11	2.39	0.51
1:C:219:MET:HG2	7:C:392:HOH:O	2.10	0.51
2:B:44:ILE:CG1	2:D:44:ILE:HD12	2.39	0.51
1:C:174:GLN:HA	1:C:201:MET:HE2	1.93	0.51
1:C:219:MET:HE3	1:C:254:LEU:HA	1.92	0.51
2:D:80:GLN:CD	2:D:80:GLN:H	2.14	0.51
1:C:134:HIS:CE1	1:C:137:GLN:HB2	2.45	0.51
2:D:20:HIS:CB	2:D:53:MET:HE1	2.41	0.51
2:D:66:LEU:O	2:D:67:SER:HB3	2.10	0.51
1:C:308:LEU:HD23	1:C:308:LEU:N	2.25	0.51
2:D:70:GLN:C	2:D:72:ASP:N	2.62	0.51
1:C:219:MET:SD	1:C:257:ALA:HB2	2.51	0.51
2:D:75:ALA:CB	2:D:99:LEU:HB3	2.40	0.51
1:A:55:THR:HB	5:A:813:ASP:OD1	2.10	0.51
2:B:65:PHE:HD1	2:B:85:ARG:HG3	1.75	0.50
1:C:38:LEU:HD13	1:C:305:ASN:ND2	2.27	0.50
1:C:9:ILE:HB	1:C:125:LEU:HD22	1.93	0.50
2:D:40:GLN:O	2:D:42:ILE:HG13	2.11	0.50
1:C:138:THR:HG21	1:C:171:SER:C	2.32	0.50
2:D:135:ALA:HA	2:D:145:PHE:O	2.12	0.50
1:A:162:ASP:HB2	1:A:230:VAL:HA	1.93	0.50
1:A:4:LEU:HD12	1:A:302:LEU:HD13	1.92	0.50
2:B:33:PHE:C	7:B:162:HOH:O	2.50	0.50
2:B:44:ILE:HG12	2:D:44:ILE:HD12	1.93	0.50
2:D:12:ILE:N	2:D:12:ILE:HD13	2.27	0.49
1:A:149:GLN:NE2	7:A:325:HOH:O	2.45	0.49
2:B:119:GLU:HB3	2:B:120:PRO:HD2	1.93	0.49
1:C:159:MET:CE	1:C:173:THR:OG1	2.60	0.49
1:C:66:LEU:HD12	7:C:433:HOH:O	2.11	0.49

*Continued on next page...*

*Continued from previous page...*

Atom-1	Atom-2	Interatomic distance (Å)	Clash overlap (Å)
1:A:34:PRO:C	1:A:36:PRO:HD3	2.33	0.49
1:C:237:PRO:C	1:C:239:GLU:H	2.16	0.49
2:B:102:ARG:CZ	2:B:102:ARG:HB3	2.43	0.49
1:C:265:HIS:CD2	1:C:267:LEU:N	2.73	0.49
2:D:96:ARG:NE	2:D:96:ARG:HA	2.28	0.49
2:D:34:LYS:HD2	7:D:335:HOH:O	2.11	0.49
2:D:13:LYS:HG3	2:D:89:TYR:CZ	2.48	0.49
1:A:106:HIS:CG	1:A:107:PRO:HD2	2.48	0.48
1:A:134:HIS:CG	1:A:137:GLN:HB2	2.48	0.48
1:C:35:GLN:NE2	1:C:310:LEU:HD23	2.28	0.48
1:A:243:VAL:HG13	1:A:244:LYS:N	2.28	0.48
1:C:174:GLN:HA	1:C:201:MET:HE1	1.95	0.48
2:D:30:LEU:HD22	2:D:30:LEU:H	1.77	0.48
1:C:105:ARG:NH2	1:C:127:ALA:O	2.45	0.48
1:C:136:THR:OG1	1:C:296:ARG:NH2	2.46	0.48
1:C:217:GLU:HG2	7:C:359:HOH:O	2.12	0.48
1:C:219:MET:CE	1:C:254:LEU:HD12	2.43	0.48
1:A:269:ARG:HA	1:A:272:GLU:OE2	2.13	0.48
1:C:75:ASP:HA	7:C:358:HOH:O	2.12	0.48
2:B:76:LEU:HD23	2:B:76:LEU:H	1.78	0.48
2:B:146:SER:O	2:B:149:VAL:HG22	2.13	0.48
2:D:111:ASN:O	2:D:117:HIS:HE1	1.96	0.48
2:D:105:ASN:HB3	2:D:122:SER:CB	2.33	0.48
2:D:119:GLU:HB3	2:D:120:PRO:HD2	1.96	0.48
2:D:50:SER:HB3	2:D:56:LYS:CG	2.44	0.48
2:D:99:LEU:CD2	2:D:99:LEU:N	2.68	0.48
1:A:306:ARG:NH2	7:A:355:HOH:O	2.29	0.47
1:C:201:MET:O	1:C:205:LYS:HG2	2.13	0.47
1:C:40:LYS:HG2	1:C:41:HIS:CE1	2.49	0.47
1:A:219:MET:HG2	7:A:362:HOH:O	2.14	0.47
1:A:45:ALA:HA	1:A:71:VAL:O	2.13	0.47
2:D:23:ALA:O	2:D:24:GLN:HB2	2.14	0.47
2:B:40:GLN:HE22	2:B:63:ASN:HD22	1.62	0.47
2:D:18:ILE:CG2	2:D:21:ILE:HD11	2.42	0.47
1:A:104:MET:CB	7:A:443:HOH:O	2.59	0.47
1:C:159:MET:HE3	1:C:169:VAL:CG1	2.44	0.47
1:C:184:PHE:O	1:C:209:TRP:HA	2.13	0.47
1:C:160:VAL:HG21	1:C:227:MET:CE	2.45	0.47
1:C:20:LEU:O	1:C:23:VAL:HG13	2.15	0.47
2:D:33:PHE:CZ	2:D:73:GLN:NE2	2.82	0.47
1:A:54:ARG:CB	5:A:813:ASP:HB2	2.32	0.47

*Continued on next page...*

*Continued from previous page...*

Atom-1	Atom-2	Interatomic distance (Å)	Clash overlap (Å)
1:C:194:MET:HE2	1:C:195:PRO:HG2	1.96	0.47
2:D:66:LEU:HB3	2:D:71:VAL:HG23	1.96	0.47
1:A:77:ALA:O	1:A:83:LYS:HE3	2.15	0.47
1:C:225:LEU:HD21	1:C:227:MET:HE3	1.97	0.47
1:C:229:ARG:NH2	1:C:232:LYS:HD3	2.29	0.47
1:C:266:PRO:O	1:C:267:LEU:HB2	2.14	0.47
2:D:21:ILE:HG21	2:D:26:GLY:HA2	1.97	0.47
1:C:137:GLN:O	1:C:140:LEU:HG	2.15	0.47
1:A:233:GLU:HG3	7:A:372:HOH:O	2.15	0.47
1:C:238:SER:HB2	7:C:327:HOH:O	2.14	0.46
1:C:287:GLN:HE21	1:C:287:GLN:N	2.07	0.46
1:A:200:ASP:OD2	2:B:130:ARG:HD2	2.16	0.46
1:C:151:ARG:NH2	7:C:318:HOH:O	2.43	0.46
1:C:219:MET:HE1	1:C:254:LEU:HD12	1.97	0.46
2:D:148:ASN:O	2:D:152:ALA:HB2	2.16	0.46
2:D:16:THR:HG21	2:D:65:PHE:HA	1.98	0.46
2:B:68:GLU:HA	2:B:68:GLU:OE2	2.16	0.46
2:B:17:VAL:HG23	2:B:86:ILE:HD12	1.96	0.46
2:B:30:LEU:HD13	2:B:59:ILE:HD13	1.98	0.46
1:C:253:ASP:HB2	7:C:388:HOH:O	2.15	0.46
1:A:33:ASN:ND2	7:A:353:HOH:O	2.48	0.46
1:C:183:ARG:HG2	1:C:208:ALA:CB	2.39	0.46
1:C:186:PHE:HB3	7:C:382:HOH:O	2.16	0.46
1:C:78:ASN:HB2	7:C:387:HOH:O	2.15	0.46
1:C:91:THR:O	1:C:95:ILE:HG13	2.16	0.46
1:A:147:GLU:O	1:A:147:GLU:HG2	2.16	0.46
1:A:14:ASP:OD1	1:A:113:ARG:NH2	2.45	0.46
1:A:15:LEU:O	1:A:178:LYS:CE	2.64	0.46
1:A:55:THR:HG23	4:A:811:PCT:O1P	2.16	0.46
2:B:95:SER:HB3	7:B:169:HOH:O	2.16	0.46
1:C:207:ILE:HD13	7:C:406:HOH:O	2.15	0.46
1:C:46:SER:N	7:C:341:HOH:O	2.33	0.46
1:A:64:HIS:HE1	7:A:396:HOH:O	1.98	0.46
2:B:80:GLN:O	2:B:81:ALA:HB2	2.15	0.46
1:A:56:ARG:HD3	7:A:386:HOH:O	2.16	0.45
1:C:116:THR:HG22	1:C:124:VAL:HB	1.97	0.45
2:D:101:GLU:C	2:D:127:VAL:HG23	2.36	0.45
2:D:66:LEU:HD12	2:D:70:GLN:HB2	1.98	0.45
1:A:15:LEU:O	1:A:178:LYS:HE3	2.17	0.45
1:A:261:MET:SD	1:A:261:MET:C	2.95	0.45
2:D:53:MET:HE3	2:D:56:LYS:HG2	1.98	0.45

*Continued on next page...*

*Continued from previous page...*

Atom-1	Atom-2	Interatomic distance (Å)	Clash overlap (Å)
1:A:232:LYS:HE2	7:A:372:HOH:O	2.16	0.45
1:C:194:MET:HA	1:C:195:PRO:HD2	1.75	0.45
1:A:25:ALA:O	1:A:29:LYS:HG2	2.16	0.45
5:A:812:ASP:HA	7:A:366:HOH:O	2.17	0.45
1:C:17:ARG:HB2	1:C:17:ARG:HH21	1.80	0.45
2:D:15:GLY:HA2	2:D:64:THR:H	1.81	0.45
1:A:46:SER:HB2	7:A:383:HOH:O	2.16	0.45
1:C:207:ILE:CD1	1:C:208:ALA:H	2.28	0.45
1:C:216:GLU:HB3	7:C:388:HOH:O	2.17	0.45
1:C:269:ARG:NH1	1:C:278:ASP:OD2	2.50	0.45
2:D:103:ILE:HG21	2:D:107:LEU:HD22	1.99	0.45
2:D:125:PHE:HB2	7:D:233:HOH:O	2.17	0.45
2:B:39:ASP:CG	2:D:55:ARG:HH12	2.20	0.45
1:A:81:LEU:HD23	1:A:81:LEU:C	2.37	0.45
2:B:36:THR:HG21	2:D:27:PHE:CD1	2.51	0.45
2:D:31:SER:C	2:D:33:PHE:N	2.70	0.45
1:A:160:VAL:HA	1:A:187:ILE:O	2.17	0.45
1:A:140:LEU:HD22	5:A:813:ASP:HA	1.96	0.45
2:B:14:ARG:HB2	7:B:172:HOH:O	2.16	0.45
2:B:129:LYS:HG2	2:B:129:LYS:O	2.16	0.45
2:B:32:LEU:HB3	2:B:33:PHE:H	1.62	0.45
1:C:306:ARG:CB	1:C:306:ARG:HH21	2.30	0.45
1:C:46:SER:O	1:C:72:GLY:HA3	2.17	0.45
2:D:73:GLN:O	2:D:76:LEU:HD12	2.17	0.45
1:A:267:LEU:HB3	1:A:268:PRO:HA	1.99	0.44
2:B:41:ARG:NH2	2:B:41:ARG:CB	2.81	0.44
2:D:67:SER:OG	2:D:68:GLU:N	2.50	0.44
1:A:167:ARG:CD	5:A:812:ASP:OXT	2.54	0.44
2:B:52:GLU:O	2:B:53:MET:HB3	2.16	0.44
1:A:55:THR:HG21	1:A:105:ARG:HH12	1.77	0.44
1:A:105:ARG:N	7:A:443:HOH:O	2.50	0.44
1:A:214:SER:OG	1:A:217:GLU:HG3	2.18	0.44
1:A:97:THR:CG2	1:A:97:THR:O	2.64	0.44
2:D:75:ALA:HB1	2:D:99:LEU:CB	2.43	0.44
2:B:44:ILE:HD11	2:B:46:LEU:HD13	1.99	0.44
2:D:125:PHE:HD2	7:D:233:HOH:O	2.00	0.44
1:C:223:ASP:OD1	1:C:258:LYS:HE2	2.17	0.44
1:C:55:THR:HG21	1:C:105:ARG:HH22	1.81	0.44
1:A:151:ARG:HB2	7:A:389:HOH:O	2.18	0.44
1:C:55:THR:O	1:C:59:PHE:HB2	2.18	0.44
2:D:12:ILE:O	2:D:13:LYS:C	2.56	0.44

*Continued on next page...*

*Continued from previous page...*

Atom-1	Atom-2	Interatomic distance (Å)	Clash overlap (Å)
2:D:97:PRO:HA	7:D:238:HOH:O	2.17	0.44
1:C:155:LEU:N	1:C:182:ASN:ND2	2.53	0.44
1:C:228:THR:HG23	7:C:348:HOH:O	2.18	0.44
1:C:71:VAL:HG23	7:C:341:HOH:O	2.18	0.44
2:D:101:GLU:O	2:D:126:ALA:HA	2.18	0.44
2:D:40:GLN:HB3	2:D:62:GLU:O	2.17	0.44
2:D:9:VAL:HG22	2:D:9:VAL:O	2.17	0.44
1:A:8:HIS:CE1	1:A:123:PRO:HA	2.53	0.44
1:A:243:VAL:CG1	1:A:244:LYS:N	2.81	0.43
2:B:13:LYS:HG3	2:B:89:TYR:CE1	2.53	0.43
1:C:153:ASP:O	1:C:154:ASN:C	2.56	0.43
1:A:261:MET:O	1:A:262:LYS:HD3	2.18	0.43
2:B:152:ALA:O	2:B:153:ASN:CB	2.66	0.43
1:C:38:LEU:CD1	1:C:305:ASN:ND2	2.81	0.43
1:C:51:ALA:N	7:C:332:HOH:O	2.49	0.43
2:D:17:VAL:HG22	2:D:60:LYS:HG2	1.98	0.43
1:A:163:LEU:HA	1:A:169:VAL:HG21	2.01	0.43
1:C:138:THR:HA	1:C:141:ASP:HB2	2.00	0.43
1:C:159:MET:HE2	1:C:169:VAL:HB	1.97	0.43
1:A:206:GLY:HA2	7:A:441:HOH:O	2.19	0.43
1:A:309:VAL:HA	7:A:404:HOH:O	2.18	0.43
1:C:59:PHE:CE1	1:C:296:ARG:HD3	2.54	0.43
1:C:121:ASN:N	1:C:121:ASN:ND2	2.63	0.43
1:C:38:LEU:HD13	1:C:305:ASN:HD21	1.83	0.43
1:A:149:GLN:CD	7:A:325:HOH:O	2.56	0.43
1:A:231:GLN:CG	7:A:414:HOH:O	2.66	0.43
2:B:111:ASN:O	2:B:117:HIS:CE1	2.70	0.43
2:B:134:ILE:HG13	2:B:147:HIS:HB3	2.00	0.43
1:C:159:MET:HE3	1:C:169:VAL:HG12	1.99	0.43
2:D:76:LEU:N	2:D:76:LEU:HD12	2.34	0.43
1:A:149:GLN:HA	1:A:149:GLN:OE1	2.18	0.43
1:C:121:ASN:CB	7:C:381:HOH:O	2.67	0.43
1:C:284:TRP:HA	1:C:287:GLN:NE2	2.33	0.43
1:C:167:ARG:NH2	5:C:912:ASP:OXT	2.52	0.43
2:B:52:GLU:O	2:B:53:MET:HB2	2.19	0.43
1:C:284:TRP:O	1:C:288:GLN:HB2	2.19	0.43
2:D:104:ASP:CG	2:D:105:ASN:H	2.22	0.43
2:D:19:ASP:OD2	2:D:20:HIS:N	2.48	0.43
2:D:87:ASP:O	2:D:88:ASN:C	2.57	0.43
1:C:159:MET:HE2	1:C:173:THR:OG1	2.18	0.42
1:C:225:LEU:HD11	1:C:227:MET:CE	2.49	0.42

*Continued on next page...*

*Continued from previous page...*

Atom-1	Atom-2	Interatomic distance (Å)	Clash overlap (Å)
2:D:105:ASN:HA	2:D:123:SER:OG	2.19	0.42
1:A:31:LYS:HD2	1:A:294:PHE:CE2	2.54	0.42
1:A:55:THR:CG2	1:A:105:ARG:HH12	2.30	0.42
1:C:226:TYR:CE1	1:C:266:PRO:HD3	2.54	0.42
1:C:35:GLN:CD	1:C:310:LEU:HD23	2.39	0.42
1:C:51:ALA:O	1:C:52:SER:HB2	2.19	0.42
2:D:85:ARG:O	2:D:86:ILE:HD12	2.19	0.42
1:A:306:ARG:NH2	1:A:307:ASP:OD1	2.52	0.42
1:C:306:ARG:HB3	1:C:306:ARG:CZ	2.48	0.42
1:C:39:LEU:CD1	1:C:68:ALA:HB2	2.45	0.42
1:A:296:ARG:NH2	5:A:813:ASP:HB3	2.32	0.42
1:C:277:VAL:O	1:C:283:ALA:HB2	2.20	0.42
2:D:33:PHE:O	2:D:35:LEU:N	2.53	0.42
1:A:146:GLN:HG3	1:A:152:LEU:CD2	2.49	0.42
2:B:52:GLU:HG3	7:B:173:HOH:O	2.19	0.42
2:D:99:LEU:O	2:D:100:PRO:O	2.37	0.42
2:B:36:THR:HG21	2:D:27:PHE:CG	2.55	0.42
1:A:187:ILE:HG22	1:A:247:PHE:CE2	2.54	0.42
1:C:114:LEU:CD2	2:D:121:VAL:HG11	2.49	0.42
1:C:163:LEU:HG	1:C:188:ALA:HB2	2.02	0.42
1:C:237:PRO:HA	1:C:240:TYR:CD2	2.54	0.42
1:C:265:HIS:CD2	1:C:266:PRO:HD2	2.54	0.42
1:A:10:ILE:HG12	1:A:113:ARG:NH2	2.35	0.42
2:B:129:LYS:HA	2:B:134:ILE:HA	2.01	0.42
1:C:160:VAL:HG12	1:C:161:GLY:N	2.35	0.42
1:C:194:MET:HE3	1:C:195:PRO:HD2	2.02	0.42
1:A:184:PHE:O	1:A:209:TRP:HA	2.20	0.42
1:C:48:PHE:CD2	1:C:105:ARG:HD2	2.54	0.42
2:D:73:GLN:O	2:D:74:LEU:C	2.58	0.42
2:B:58:LEU:HD21	2:B:60:LYS:HG3	2.01	0.42
2:B:151:LEU:HB2	2:B:152:ALA:H	1.58	0.41
1:C:31:LYS:HD3	1:C:294:PHE:CZ	2.55	0.41
2:D:83:VAL:CG1	2:D:95:SER:HB2	2.38	0.41
2:B:104:ASP:O	2:B:106:VAL:HG13	2.20	0.41
1:C:226:TYR:CZ	1:C:266:PRO:HD3	2.54	0.41
2:D:101:GLU:O	2:D:127:VAL:HG23	2.21	0.41
2:D:136:LEU:HB2	7:D:315:HOH:O	2.19	0.41
1:C:237:PRO:HD2	7:C:378:HOH:O	2.19	0.41
1:C:151:ARG:HG3	1:C:155:LEU:HD21	2.01	0.41
1:C:262:LYS:HE3	1:C:284:TRP:CE3	2.56	0.41
2:D:76:LEU:HD12	2:D:76:LEU:H	1.84	0.41

*Continued on next page...*

*Continued from previous page...*

Atom-1	Atom-2	Interatomic distance (Å)	Clash overlap (Å)
1:A:109:GLU:OE1	2:B:113:ASN:HB3	2.20	0.41
1:A:183:ARG:NH1	1:A:210:SER:OG	2.40	0.41
2:B:89:TYR:CD1	2:B:89:TYR:N	2.88	0.41
1:A:151:ARG:NE	1:A:153:ASP:O	2.39	0.41
1:A:262:LYS:HA	1:A:262:LYS:HD3	1.81	0.41
2:B:88:ASN:O	2:B:90:GLU:N	2.53	0.41
1:C:80:SER:HB2	1:C:86:GLU:OE1	2.20	0.41
1:C:270:VAL:HG22	1:C:271:ASP:OD1	2.21	0.41
1:C:39:LEU:HD11	1:C:66:LEU:CB	2.51	0.41
1:A:157:VAL:HG12	1:A:224:ILE:HB	2.02	0.41
1:C:45:ALA:HB2	1:C:99:VAL:HG11	2.01	0.41
2:D:101:GLU:O	2:D:127:VAL:N	2.48	0.41
1:C:217:GLU:N	7:C:359:HOH:O	2.40	0.41
1:A:10:ILE:CD1	1:A:113:ARG:HB2	2.51	0.41
2:B:34:LYS:N	7:B:162:HOH:O	2.53	0.41
2:D:11:ALA:HA	7:D:314:HOH:O	2.20	0.41
2:D:107:LEU:HD23	2:D:125:PHE:CD2	2.56	0.41
2:B:44:ILE:HG13	2:D:44:ILE:HD12	2.03	0.41
2:D:73:GLN:O	2:D:75:ALA:N	2.54	0.41
1:A:263:VAL:O	1:A:264:LEU:HD23	2.21	0.40
2:B:12:ILE:HD11	2:B:15:GLY:HA3	2.02	0.40
2:B:30:LEU:HA	2:B:30:LEU:HD12	1.92	0.40
2:B:34:LYS:HB3	2:B:37:GLU:HG3	2.04	0.40
1:C:106:HIS:HE1	1:C:108:GLN:NE2	2.19	0.40
2:D:130:ARG:HD3	2:D:132:ASN:OD1	2.22	0.40
2:D:133:ASP:HB2	2:D:148:ASN:HD21	1.87	0.40
1:C:66:LEU:HG	1:C:297:GLN:HG2	2.03	0.40
1:A:33:ASN:HA	1:A:34:PRO:HD2	1.88	0.40
1:C:151:ARG:NH1	1:C:154:ASN:O	2.54	0.40
2:D:28:LYS:O	2:D:32:LEU:HB3	2.21	0.40
2:B:41:ARG:NH1	2:B:62:GLU:OE2	2.55	0.40
1:C:238:SER:CB	7:C:327:HOH:O	2.69	0.40
1:C:265:HIS:CE1	1:C:269:ARG:HB2	2.57	0.40

There are no symmetry-related clashes.



## 5.3 Torsion angles

### 5.3.1 Protein backbone

In the following table, the Percentiles column shows the percent Ramachandran outliers of the chain as a percentile score with respect to all X-ray entries followed by that with respect to entries of similar resolution.

The Analysed column shows the number of residues for which the backbone conformation was analysed, and the total number of residues.

Mol	Chain	Analysed	Favoured	Allowed	Outliers	Percentiles	
1	A	308/310 (99%)	292 (95%)	15 (5%)	1 (0%)	44	70
1	C	308/310 (99%)	278 (90%)	23 (8%)	7 (2%)	7	13
2	B	144/153 (94%)	108 (75%)	28 (19%)	8 (6%)	2	2
2	D	144/153 (94%)	103 (72%)	30 (21%)	11 (8%)	1	1
All	All	904/926 (98%)	781 (86%)	96 (11%)	27 (3%)	5	8

All (27) Ramachandran outliers are listed below:

Mol	Chain	Res	Type
1	A	238	SER
2	B	32	LEU
2	B	53	MET
2	B	152	ALA
1	C	154	ASN
1	C	194	MET
1	C	246	GLN
2	D	10	GLU
2	D	13	LYS
2	D	52	GLU
2	D	67	SER
2	B	9	VAL
2	B	34	LYS
2	B	89	TYR
2	D	32	LEU
2	D	34	LYS
2	D	75	ALA
2	D	100	PRO
2	B	47	ASN
1	C	245	ALA
2	D	104	ASP
2	B	105	ASN

*Continued on next page...*



*Continued from previous page...*

Mol	Chain	Res	Type
1	C	238	SER
2	D	99	LEU
1	C	195	PRO
1	C	71	VAL
2	D	9	VAL

### 5.3.2 Protein sidechains ⓘ

In the following table, the Percentiles column shows the percent sidechain outliers of the chain as a percentile score with respect to all X-ray entries followed by that with respect to entries of similar resolution.

The Analysed column shows the number of residues for which the sidechain conformation was analysed, and the total number of residues.

Mol	Chain	Analysed	Rotameric	Outliers	Percentiles	
1	A	260/260 (100%)	235 (90%)	25 (10%)	10	18
1	C	260/260 (100%)	223 (86%)	37 (14%)	4	6
2	B	130/137 (95%)	109 (84%)	21 (16%)	3	4
2	D	130/137 (95%)	113 (87%)	17 (13%)	5	8
All	All	780/794 (98%)	680 (87%)	100 (13%)	5	9

All (100) residues with a non-rotameric sidechain are listed below:

Mol	Chain	Res	Type
1	A	10	ILE
1	A	17	ARG
1	A	35	GLN
1	A	37	GLU
1	A	38	LEU
1	A	55	THR
1	A	56	ARG
1	A	59	PHE
1	A	65	ARG
1	A	97	THR
1	A	114	LEU
1	A	134	HIS
1	A	137	GLN
1	A	146	GLN
1	A	152	LEU
1	A	154	ASN

*Continued on next page...*

*Continued from previous page...*

Mol	Chain	Res	Type
1	A	160	VAL
1	A	167	ARG
1	A	204	GLU
1	A	244	LYS
1	A	258	LYS
1	A	261	MET
1	A	279	LYS
1	A	285	TYR
1	A	287	GLN
2	B	10	GLU
2	B	12	ILE
2	B	30	LEU
2	B	44	ILE
2	B	52	GLU
2	B	55	ARG
2	B	56	LYS
2	B	58	LEU
2	B	61	ILE
2	B	62	GLU
2	B	68	GLU
2	B	82	THR
2	B	85	ARG
2	B	88	ASN
2	B	90	GLU
2	B	94	LYS
2	B	95	SER
2	B	129	LYS
2	B	143	LYS
2	B	151	LEU
2	B	153	ASN
1	C	4	LEU
1	C	17	ARG
1	C	21	ASN
1	C	23	VAL
1	C	38	LEU
1	C	39	LEU
1	C	59	PHE
1	C	71	VAL
1	C	75	ASP
1	C	81	LEU
1	C	93	SER
1	C	108	GLN

*Continued on next page...*

*Continued from previous page...*

Mol	Chain	Res	Type
1	C	113	ARG
1	C	121	ASN
1	C	134	HIS
1	C	149	GLN
1	C	151	ARG
1	C	154	ASN
1	C	159	MET
1	C	176	LEU
1	C	183	ARG
1	C	194	MET
1	C	204	GLU
1	C	205	LYS
1	C	211	LEU
1	C	228	THR
1	C	232	LYS
1	C	235	LEU
1	C	267	LEU
1	C	269	ARG
1	C	270	VAL
1	C	285	TYR
1	C	287	GLN
1	C	306	ARG
1	C	307	ASP
1	C	308	LEU
1	C	310	LEU
2	D	12	ILE
2	D	16	THR
2	D	34	LYS
2	D	37	GLU
2	D	43	THR
2	D	52	GLU
2	D	56	LYS
2	D	61	ILE
2	D	74	LEU
2	D	76	LEU
2	D	77	TYR
2	D	94	LYS
2	D	99	LEU
2	D	101	GLU
2	D	102	ARG
2	D	127	VAL
2	D	146	SER

Some sidechains can be flipped to improve hydrogen bonding and reduce clashes. All (31) such sidechains are listed below:

Mol	Chain	Res	Type
1	A	21	ASN
1	A	121	ASN
1	A	137	GLN
1	A	149	GLN
1	A	231	GLN
1	A	246	GLN
1	A	287	GLN
1	A	291	ASN
1	A	297	GLN
2	B	8	GLN
2	B	20	HIS
2	B	40	GLN
2	B	47	ASN
2	B	73	GLN
2	B	105	ASN
2	B	117	HIS
2	B	132	ASN
1	C	35	GLN
1	C	108	GLN
1	C	121	ASN
1	C	149	GLN
1	C	182	ASN
1	C	265	HIS
1	C	287	GLN
1	C	291	ASN
1	C	297	GLN
1	C	305	ASN
2	D	84	ASN
2	D	113	ASN
2	D	147	HIS
2	D	148	ASN

### 5.3.3 RNA ⓘ

There are no RNA molecules in this entry.

## 5.4 Non-standard residues in protein, DNA, RNA chains ⓘ

There are no non-standard protein/DNA/RNA residues in this entry.

## 5.5 Carbohydrates [i](#)

There are no carbohydrates in this entry.

## 5.6 Ligand geometry [i](#)

Of 8 ligands modelled in this entry, 2 are monoatomic - leaving 6 for Mogul analysis.

In the following table, the Counts columns list the number of bonds (or angles) for which Mogul statistics could be retrieved, the number of bonds (or angles) that are observed in the model and the number of bonds (or angles) that are defined in the chemical component dictionary. The Link column lists molecule types, if any, to which the group is linked. The Z score for a bond length (or angle) is the number of standard deviations the observed value is removed from the expected value. A bond length (or angle) with  $|Z| > 2$  is considered an outlier worth inspection. RMSZ is the root-mean-square of all Z scores of the bond lengths (or angles).

Mol	Type	Chain	Res	Link	Bond lengths			Bond angles		
					Counts	RMSZ	$\# Z  > 2$	Counts	RMSZ	$\# Z  > 2$
4	PCT	A	811	-	7,7,7	1.75	2 (28%)	8,10,10	0.89	0
5	ASP	A	812	-	1,8,8	0.27	0	1,10,10	0.79	0
5	ASP	A	813	-	1,8,8	0.21	0	1,10,10	0.82	0
3	PO4	A	914	-	4,4,4	1.31	0	6,6,6	0.40	0
4	PCT	C	911	-	7,7,7	1.60	2 (28%)	8,10,10	0.95	0
5	ASP	C	912	-	1,8,8	0.26	0	1,10,10	0.77	0

In the following table, the Chirals column lists the number of chiral outliers, the number of chiral centers analysed, the number of these observed in the model and the number defined in the chemical component dictionary. Similar counts are reported in the Torsion and Rings columns. '-' means no outliers of that kind were identified.

Mol	Type	Chain	Res	Link	Chirals	Torsions	Rings
4	PCT	A	811	-	-	0/4/5/5	0/0/0/0
5	ASP	A	812	-	-	0/2/8/8	0/0/0/0
5	ASP	A	813	-	-	0/2/8/8	0/0/0/0
3	PO4	A	914	-	-	0/0/0/0	0/0/0/0
4	PCT	C	911	-	-	0/4/5/5	0/0/0/0
5	ASP	C	912	-	-	0/2/8/8	0/0/0/0

All (4) bond length outliers are listed below:

Mol	Chain	Res	Type	Atoms	Z	Observed(Å)	Ideal(Å)
4	C	911	PCT	P-O2P	2.68	1.61	1.54
4	C	911	PCT	P-O3P	2.72	1.61	1.54
4	A	811	PCT	P-O3P	2.91	1.61	1.54

*Continued on next page...*

*Continued from previous page...*

Mol	Chain	Res	Type	Atoms	Z	Observed(Å)	Ideal(Å)
4	A	811	PCT	P-O2P	2.91	1.61	1.54

There are no bond angle outliers.

There are no chirality outliers.

There are no torsion outliers.

There are no ring outliers.

4 monomers are involved in 16 short contacts:

Mol	Chain	Res	Type	Clashes	Symm-Clashes
4	A	811	PCT	3	0
5	A	812	ASP	3	0
5	A	813	ASP	8	0
5	C	912	ASP	2	0

## 5.7 Other polymers [i](#)

There are no such residues in this entry.

## 5.8 Polymer linkage issues [i](#)

There are no chain breaks in this entry.

## 6 Fit of model and data ⓘ

### 6.1 Protein, DNA and RNA chains ⓘ

In the following table, the column labelled ‘#RSRZ> 2’ contains the number (and percentage) of RSRZ outliers, followed by percent RSRZ outliers for the chain as percentile scores relative to all X-ray entries and entries of similar resolution. The OWAB column contains the minimum, median, 95<sup>th</sup> percentile and maximum values of the occupancy-weighted average B-factor per residue. The column labelled ‘Q< 0.9’ lists the number of (and percentage) of residues with an average occupancy less than 0.9.

Mol	Chain	Analysed	<RSRZ>	#RSRZ>2	OWAB(Å <sup>2</sup> )	Q<0.9
1	A	310/310 (100%)	-0.35	2 (0%) 89 88	36, 56, 81, 108	0
1	C	310/310 (100%)	-0.45	4 (1%) 77 73	50, 67, 87, 103	0
2	B	146/153 (95%)	-0.17	6 (4%) 38 30	46, 79, 114, 128	0
2	D	146/153 (95%)	0.41	13 (8%) 10 6	67, 101, 128, 153	0
All	All	912/926 (98%)	-0.23	25 (2%) 55 48	36, 69, 114, 153	0

All (25) RSRZ outliers are listed below:

Mol	Chain	Res	Type	RSRZ
2	D	9	VAL	8.0
2	D	10	GLU	6.1
2	D	8	GLN	5.6
2	D	77	TYR	5.4
2	D	135	ALA	4.6
2	B	9	VAL	4.6
2	D	153	ASN	4.4
2	D	152	ALA	4.2
2	D	11	ALA	4.2
2	B	52	GLU	3.8
2	B	50	SER	3.6
2	D	131	ALA	3.4
2	D	73	GLN	3.3
2	B	51	GLY	3.3
2	B	53	MET	3.1
2	D	76	LEU	3.0
2	B	49	PRO	2.7
1	A	310	LEU	2.7
1	A	226	TYR	2.7
2	D	136	LEU	2.4
1	C	226	TYR	2.3

*Continued on next page...*

*Continued from previous page...*

Mol	Chain	Res	Type	RSRZ
1	C	266	PRO	2.3
1	C	1	ALA	2.2
2	D	129	LYS	2.2
1	C	228	THR	2.0

## 6.2 Non-standard residues in protein, DNA, RNA chains [i](#)

There are no non-standard protein/DNA/RNA residues in this entry.

## 6.3 Carbohydrates [i](#)

There are no carbohydrates in this entry.

## 6.4 Ligands [i](#)

In the following table, the Atoms column lists the number of modelled atoms in the group and the number defined in the chemical component dictionary. LLDF column lists the quality of electron density of the group with respect to its neighbouring residues in protein, DNA or RNA chains. The B-factors column lists the minimum, median, 95<sup>th</sup> percentile and maximum values of B factors of atoms in the group. The column labelled 'Q< 0.9' lists the number of atoms with occupancy less than 0.9.

Mol	Type	Chain	Res	Atoms	RSCC	RSR	LLDF	B-factors(Å <sup>2</sup> )	Q<0.9
5	ASP	A	813	9/9	0.79	0.39	4.69	106,106,107,108	0
5	ASP	C	912	9/9	0.80	0.43	2.83	90,94,97,99	0
3	PO4	A	914	5/5	0.86	0.18	2.00	117,117,118,118	0
5	ASP	A	812	9/9	0.92	0.27	1.32	64,66,67,68	0
4	PCT	C	911	8/8	0.98	0.23	0.18	54,57,61,61	0
4	PCT	A	811	8/8	0.97	0.19	-0.07	36,41,43,47	0
6	ZN	D	955	1/1	0.99	0.08	-1.43	80,80,80,80	0
6	ZN	B	954	1/1	0.99	0.07	-1.63	53,53,53,53	0

## 6.5 Other polymers [i](#)

There are no such residues in this entry.