



# wwPDB X-ray Structure Validation Summary Report ⓘ

Feb 13, 2017 – 02:55 pm GMT

PDB ID : 4HUM  
Title : MATE transporter NorM-NG in complex with ethidium and monobody  
Authors : Lu, M.  
Deposited on : 2012-11-02  
Resolution : 3.49 Å(reported)

This is a wwPDB X-ray Structure Validation Summary Report for a publicly released PDB entry.

We welcome your comments at [validation@mail.wwpdb.org](mailto:validation@mail.wwpdb.org)

A user guide is available at

<http://wwpdb.org/validation/2016/XrayValidationReportHelp>

with specific help available everywhere you see the ⓘ symbol.

---

The following versions of software and data (see [references ⓘ](#)) were used in the production of this report:

MolProbity	:	4.02b-467
Mogul	:	1.7.2 (RC1), CSD as538be (2017)
Xtriage (Phenix)	:	1.9-1692
EDS	:	trunk28620
Percentile statistics	:	20161228.v01 (using entries in the PDB archive December 28th 2016)
Refmac	:	5.8.0135
CCP4	:	6.5.0
Ideal geometry (proteins)	:	Engh & Huber (2001)
Ideal geometry (DNA, RNA)	:	Parkinson et al. (1996)
Validation Pipeline (wwPDB-VP)	:	recalc28949

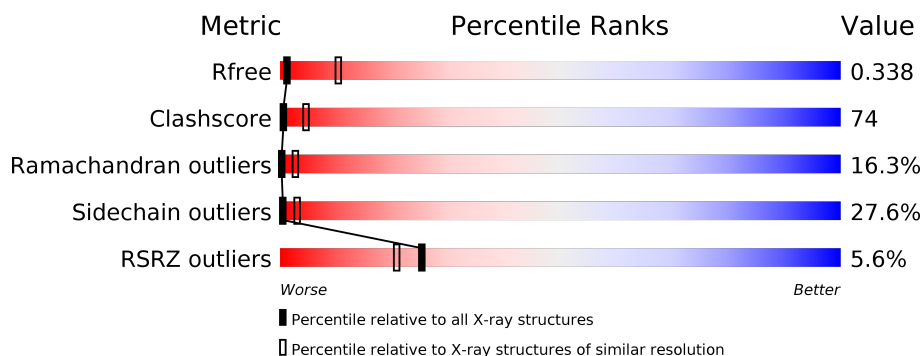
# 1 Overall quality at a glance

The following experimental techniques were used to determine the structure:

*X-RAY DIFFRACTION*

The reported resolution of this entry is 3.49 Å.

Percentile scores (ranging between 0-100) for global validation metrics of the entry are shown in the following graphic. The table shows the number of entries on which the scores are based.



Metric	Whole archive (#Entries)	Similar resolution (#Entries, resolution range(Å))
$R_{free}$	100719	1195 (3.60-3.40)
Clashscore	112137	1322 (3.60-3.40)
Ramachandran outliers	110173	1283 (3.60-3.40)
Sidechain outliers	110143	1284 (3.60-3.40)
RSRZ outliers	101464	1226 (3.60-3.40)

The table below summarises the geometric issues observed across the polymeric chains and their fit to the electron density. The red, orange, yellow and green segments on the lower bar indicate the fraction of residues that contain outliers for  $\geq 3$ , 2, 1 and 0 types of geometric quality criteria. A grey segment represents the fraction of residues that are not modelled. The numeric value for each fraction is indicated below the corresponding segment, with a dot representing fractions  $\leq 5\%$ . The upper red bar (where present) indicates the fraction of residues that have poor fit to the electron density. The numeric value is given above the bar.

Mol	Chain	Length	Quality of chain
1	A	459	<div> <div>5%</div> <div>21% 52% 24% .</div> </div>
2	B	99	<div> <div>6%</div> <div>12% 44% 31% . 8%</div> </div>

## 2 Entry composition

There are 3 unique types of molecules in this entry. The entry contains 4239 atoms, of which 0 are hydrogens and 0 are deuteriums.

In the tables below, the ZeroOcc column contains the number of atoms modelled with zero occupancy, the AltConf column contains the number of residues with at least one atom in alternate conformation and the Trace column contains the number of residues modelled with at most 2 atoms.

- Molecule 1 is a protein called Multidrug efflux protein.

Mol	Chain	Residues	Atoms					ZeroOcc	AltConf	Trace
1	A	459	Total	C	N	O	S	0	0	0
			3508	2338	558	589	23			

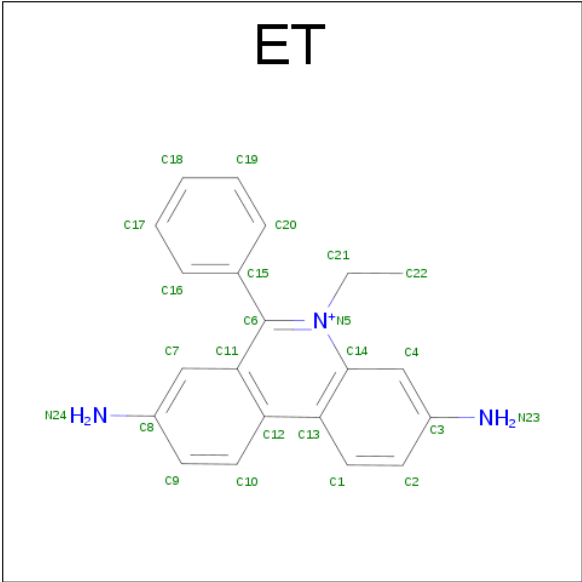
There are 4 discrepancies between the modelled and reference sequences:

Chain	Residue	Modelled	Actual	Comment	Reference
A	460	SER	-	EXPRESSION TAG	UNP E8SM44
A	461	SER	-	EXPRESSION TAG	UNP E8SM44
A	462	GLY	-	EXPRESSION TAG	UNP E8SM44
A	463	LEU	-	EXPRESSION TAG	UNP E8SM44

- Molecule 2 is a protein called Protein B.

Mol	Chain	Residues	Atoms				ZeroOcc	AltConf	Trace
2	B	91	Total	C	N	O	0	0	0
			707	457	110	140			

- Molecule 3 is ETHIDIUM (three-letter code: ET) (formula:  $C_{21}H_{20}N_3$ ).



Mol	Chain	Residues	Atoms			ZeroOcc	AltConf
3	A	1	Total	C	N	0	0
			24	21	3		





## 4 Data and refinement statistics

Property	Value	Source
Space group	P 32 2 1	Depositor
Cell constants a, b, c, $\alpha$ , $\beta$ , $\gamma$	119.03Å 119.03Å 227.48Å 90.00° 90.00° 120.00°	Depositor
Resolution (Å)	20.00 – 3.49 52.73 – 3.49	Depositor EDS
% Data completeness (in resolution range)	99.1 (20.00-3.49) 99.1 (52.73-3.49)	Depositor EDS
$R_{merge}$	(Not available)	Depositor
$R_{sym}$	(Not available)	Depositor
$\langle I/\sigma(I) \rangle$ <sup>1</sup>	2.00 (at 3.48Å)	Xtriage
Refinement program	REFMAC 5.6.0117	Depositor
R, $R_{free}$	0.314 , 0.331 0.330 , 0.338	Depositor DCC
$R_{free}$ test set	1231 reflections (5.38%)	DCC
Wilson B-factor (Å <sup>2</sup> )	126.4	Xtriage
Anisotropy	0.452	Xtriage
Bulk solvent $k_{sol}$ (e/Å <sup>3</sup> ), $B_{sol}$ (Å <sup>2</sup> )	0.17 , 111.6	EDS
L-test for twinning <sup>2</sup>	$\langle  L  \rangle = 0.36$ , $\langle L^2 \rangle = 0.19$	Xtriage
Estimated twinning fraction	0.180 for -h,-k,l	Xtriage
$F_o, F_c$ correlation	0.82	EDS
Total number of atoms	4239	wwPDB-VP
Average B, all atoms (Å <sup>2</sup> )	194.0	wwPDB-VP

Xtriage's analysis on translational NCS is as follows: *The largest off-origin peak in the Patterson function is 4.07% of the height of the origin peak. No significant pseudotranslation is detected.*

<sup>1</sup>Intensities estimated from amplitudes.

<sup>2</sup>Theoretical values of  $\langle |L| \rangle$ ,  $\langle L^2 \rangle$  for acentric reflections are 0.5, 0.333 respectively for untwinned datasets, and 0.375, 0.2 for perfectly twinned datasets.

## 5 Model quality

### 5.1 Standard geometry

Bond lengths and bond angles in the following residue types are not validated in this section: ET

The Z score for a bond length (or angle) is the number of standard deviations the observed value is removed from the expected value. A bond length (or angle) with  $|Z| > 5$  is considered an outlier worth inspection. RMSZ is the root-mean-square of all Z scores of the bond lengths (or angles).

Mol	Chain	Bond lengths		Bond angles	
		RMSZ	$\# Z  > 5$	RMSZ	$\# Z  > 5$
1	A	0.72	6/3605 (0.2%)	0.94	5/4898 (0.1%)
2	B	0.81	0/729	1.19	4/1004 (0.4%)
All	All	0.73	6/4334 (0.1%)	0.98	9/5902 (0.2%)

Chiral center outliers are detected by calculating the chiral volume of a chiral center and verifying if the center is modelled as a planar moiety or with the opposite hand. A planarity outlier is detected by checking planarity of atoms in a peptide group, atoms in a mainchain group or atoms of a sidechain that are expected to be planar.

Mol	Chain	#Chirality outliers	#Planarity outliers
1	A	0	9
2	B	0	2
All	All	0	11

The worst 5 of 6 bond length outliers are listed below:

Mol	Chain	Res	Type	Atoms	Z	Observed(Å)	Ideal(Å)
1	A	211	TRP	CD2-CE2	5.57	1.48	1.41
1	A	443	TRP	CD2-CE2	5.51	1.48	1.41
1	A	125	TRP	CD2-CE2	5.42	1.47	1.41
1	A	102	TRP	CD2-CE2	5.34	1.47	1.41
1	A	116	TRP	CD2-CE2	5.15	1.47	1.41

The worst 5 of 9 bond angle outliers are listed below:

Mol	Chain	Res	Type	Atoms	Z	Observed(°)	Ideal(°)
2	B	30	VAL	CB-CA-C	-6.27	99.48	111.40
2	B	30	VAL	C-N-CA	-6.07	106.53	121.70
1	A	444	CYS	CA-CB-SG	6.00	124.81	114.00
1	A	55	ALA	N-CA-C	-5.97	94.89	111.00

*Continued on next page...*



*Continued from previous page...*

Mol	Chain	Res	Type	Atoms	Z	Observed(°)	Ideal(°)
2	B	33	ARG	N-CA-C	-5.73	95.53	111.00

There are no chirality outliers.

5 of 11 planarity outliers are listed below:

Mol	Chain	Res	Type	Group
1	A	138	GLN	Peptide
1	A	194	MET	Peptide
1	A	215	LEU	Peptide
1	A	220	TYR	Peptide
1	A	54	ALA	Peptide

## 5.2 Too-close contacts

In the following table, the Non-H and H(model) columns list the number of non-hydrogen atoms and hydrogen atoms in the chain respectively. The H(added) column lists the number of hydrogen atoms added and optimized by MolProbity. The Clashes column lists the number of clashes within the asymmetric unit, whereas Symm-Clashes lists symmetry related clashes.

Mol	Chain	Non-H	H(model)	H(added)	Clashes	Symm-Clashes
1	A	3508	0	3587	521	0
2	B	707	0	681	127	0
3	A	24	0	20	3	0
All	All	4239	0	4288	633	0

The all-atom clashscore is defined as the number of clashes found per 1000 atoms (including hydrogen atoms). The all-atom clashscore for this structure is 74.

The worst 5 of 633 close contacts within the same asymmetric unit are listed below, sorted by their clash magnitude.

Atom-1	Atom-2	Interatomic distance (Å)	Clash overlap (Å)
1:A:460:SER:O	2:B:8:LEU:HD12	1.39	1.21
2:B:36:TYR:HA	2:B:70:ILE:HD11	1.23	1.17
1:A:78:ASN:HA	1:A:163:LEU:HD13	1.31	1.12
2:B:4:VAL:HG22	2:B:6:THR:HG23	1.11	1.11
1:A:144:SER:HB3	1:A:204:VAL:HG12	1.29	1.10

There are no symmetry-related clashes.

## 5.3 Torsion angles

### 5.3.1 Protein backbone

In the following table, the Percentiles column shows the percent Ramachandran outliers of the chain as a percentile score with respect to all X-ray entries followed by that with respect to entries of similar resolution.

The Analysed column shows the number of residues for which the backbone conformation was analysed, and the total number of residues.

Mol	Chain	Analysed	Favoured	Allowed	Outliers	Percentiles	
1	A	457/459 (100%)	242 (53%)	142 (31%)	73 (16%)	0	3
2	B	89/99 (90%)	55 (62%)	18 (20%)	16 (18%)	0	2
All	All	546/558 (98%)	297 (54%)	160 (29%)	89 (16%)	0	3

5 of 89 Ramachandran outliers are listed below:

Mol	Chain	Res	Type
1	A	10	PHE
1	A	80	MET
1	A	105	LEU
1	A	139	TYR
1	A	149	ALA

### 5.3.2 Protein sidechains

In the following table, the Percentiles column shows the percent sidechain outliers of the chain as a percentile score with respect to all X-ray entries followed by that with respect to entries of similar resolution.

The Analysed column shows the number of residues for which the sidechain conformation was analysed, and the total number of residues.

Mol	Chain	Analysed	Rotameric	Outliers	Percentiles	
1	A	353/353 (100%)	261 (74%)	92 (26%)	0	3
2	B	78/85 (92%)	51 (65%)	27 (35%)	0	2
All	All	431/438 (98%)	312 (72%)	119 (28%)	0	3

5 of 119 residues with a non-rotameric sidechain are listed below:

Mol	Chain	Res	Type
1	A	232	LEU

*Continued on next page...*

*Continued from previous page...*

Mol	Chain	Res	Type
1	A	310	PHE
2	B	53	SER
1	A	243	VAL
1	A	292	ILE

Some sidechains can be flipped to improve hydrogen bonding and reduce clashes. All (5) such sidechains are listed below:

Mol	Chain	Res	Type
1	A	31	GLN
1	A	124	ASN
1	A	180	ASN
1	A	184	ASN
2	B	42	ASN

### 5.3.3 RNA [i](#)

There are no RNA molecules in this entry.

## 5.4 Non-standard residues in protein, DNA, RNA chains [i](#)

There are no non-standard protein/DNA/RNA residues in this entry.

## 5.5 Carbohydrates [i](#)

There are no carbohydrates in this entry.

## 5.6 Ligand geometry [i](#)

1 ligand is modelled in this entry.

In the following table, the Counts columns list the number of bonds (or angles) for which Mogul statistics could be retrieved, the number of bonds (or angles) that are observed in the model and the number of bonds (or angles) that are defined in the chemical component dictionary. The Link column lists molecule types, if any, to which the group is linked. The Z score for a bond length (or angle) is the number of standard deviations the observed value is removed from the expected value. A bond length (or angle) with  $|Z| > 2$  is considered an outlier worth inspection. RMSZ is the root-mean-square of all Z scores of the bond lengths (or angles).

Mol	Type	Chain	Res	Link	Bond lengths			Bond angles		
					Counts	RMSZ	# Z  > 2	Counts	RMSZ	# Z  > 2
3	ET	A	501	-	25,27,27	2.13	4 (16%)	33,39,39	1.47	3 (9%)

In the following table, the Chirals column lists the number of chiral outliers, the number of chiral centers analysed, the number of these observed in the model and the number defined in the chemical component dictionary. Similar counts are reported in the Torsion and Rings columns. '-' means no outliers of that kind were identified.

Mol	Type	Chain	Res	Link	Chirals	Torsions	Rings
3	ET	A	501	-	-	0/6/6/6	0/4/4/4

All (4) bond length outliers are listed below:

Mol	Chain	Res	Type	Atoms	Z	Observed(Å)	Ideal(Å)
3	A	501	ET	C14-N5	3.97	1.45	1.40
3	A	501	ET	C6-C11	4.42	1.50	1.43
3	A	501	ET	C11-C12	5.12	1.49	1.42
3	A	501	ET	C13-C14	6.07	1.51	1.41

All (3) bond angle outliers are listed below:

Mol	Chain	Res	Type	Atoms	Z	Observed(°)	Ideal(°)
3	A	501	ET	C15-C6-C11	-3.71	113.27	121.34
3	A	501	ET	C4-C14-C13	-3.22	115.92	120.64
3	A	501	ET	C15-C6-N5	3.90	125.13	120.46

There are no chirality outliers.

There are no torsion outliers.

There are no ring outliers.

1 monomer is involved in 3 short contacts:

Mol	Chain	Res	Type	Clashes	Symm-Clashes
3	A	501	ET	3	0

## 5.7 Other polymers ⓘ

There are no such residues in this entry.

## 5.8 Polymer linkage issues ⓘ

There are no chain breaks in this entry.

## 6 Fit of model and data [i](#)

### 6.1 Protein, DNA and RNA chains [i](#)

In the following table, the column labelled ‘#RSRZ> 2’ contains the number (and percentage) of RSRZ outliers, followed by percent RSRZ outliers for the chain as percentile scores relative to all X-ray entries and entries of similar resolution. The OWAB column contains the minimum, median, 95<sup>th</sup> percentile and maximum values of the occupancy-weighted average B-factor per residue. The column labelled ‘Q< 0.9’ lists the number of (and percentage) of residues with an average occupancy less than 0.9.

Mol	Chain	Analysed	<RSRZ>	#RSRZ>2		OWAB(Å <sup>2</sup> )	Q<0.9
1	A	459/459 (100%)	-0.02	25 (5%)	26 22	81, 185, 317, 399	0
2	B	91/99 (91%)	-0.06	6 (6%)	19 16	74, 159, 230, 277	0
All	All	550/558 (98%)	-0.02	31 (5%)	25 21	74, 181, 312, 399	0

The worst 5 of 31 RSRZ outliers are listed below:

Mol	Chain	Res	Type	RSRZ
2	B	2	SER	14.3
2	B	1	VAL	12.9
1	A	463	LEU	5.2
1	A	9	SER	5.1
1	A	457	LYS	4.8

### 6.2 Non-standard residues in protein, DNA, RNA chains [i](#)

There are no non-standard protein/DNA/RNA residues in this entry.

### 6.3 Carbohydrates [i](#)

There are no carbohydrates in this entry.

### 6.4 Ligands [i](#)

In the following table, the Atoms column lists the number of modelled atoms in the group and the number defined in the chemical component dictionary. LLDF column lists the quality of electron density of the group with respect to its neighbouring residues in protein, DNA or RNA chains. The B-factors column lists the minimum, median, 95<sup>th</sup> percentile and maximum values of B factors of atoms in the group. The column labelled ‘Q< 0.9’ lists the number of atoms with occupancy less than 0.9.

Mol	Type	Chain	Res	Atoms	RSCC	RSR	LLDF	B-factors( $\text{\AA}^2$ )	Q<0.9
3	ET	A	501	24/24	0.74	0.36	1.44	193,270,307,317	0

## 6.5 Other polymers [i](#)

There are no such residues in this entry.