



Full wwPDB X-ray Structure Validation Report ⓘ

Feb 15, 2017 – 03:44 am GMT

PDB ID : 2HV2
Title : Crystal Structure of Conserved Protein of Unknown Function from *Enterococcus faecalis* V583 at 2.4 Å Resolution, Probable N-Acyltransferase
Authors : Tereshko, V.A.; Qiu, Y.; Kossiakoff, A.A.; Joachimiak, A.; Midwest Center for Structural Genomics (MCSG)
Deposited on : 2006-07-27
Resolution : 2.40 Å(reported)

This is a Full wwPDB X-ray Structure Validation Report for a publicly released PDB entry.

We welcome your comments at validation@mail.wwpdb.org

A user guide is available at

<http://wwpdb.org/validation/2016/XrayValidationReportHelp>

with specific help available everywhere you see the ⓘ symbol.

The following versions of software and data (see [references ⓘ](#)) were used in the production of this report:

MolProbity	:	4.02b-467
Mogul	:	1.7.2 (RC1), CSD as538be (2017)
Xtriage (Phenix)	:	1.9-1692
EDS	:	trunk28620
Percentile statistics	:	20161228.v01 (using entries in the PDB archive December 28th 2016)
Refmac	:	5.8.0135
CCP4	:	6.5.0
Ideal geometry (proteins)	:	Engh & Huber (2001)
Ideal geometry (DNA, RNA)	:	Parkinson et al. (1996)
Validation Pipeline (wwPDB-VP)	:	recalc28949

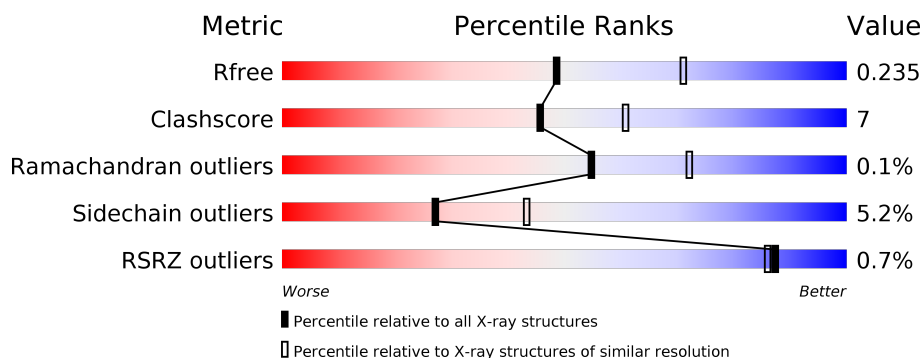
1 Overall quality at a glance

The following experimental techniques were used to determine the structure:

X-RAY DIFFRACTION

The reported resolution of this entry is 2.40 Å.

Percentile scores (ranging between 0-100) for global validation metrics of the entry are shown in the following graphic. The table shows the number of entries on which the scores are based.



Metric	Whole archive (#Entries)	Similar resolution (#Entries, resolution range(Å))
R_{free}	100719	3166 (2.40-2.40)
Clashscore	112137	3674 (2.40-2.40)
Ramachandran outliers	110173	3616 (2.40-2.40)
Sidechain outliers	110143	3617 (2.40-2.40)
RSRZ outliers	101464	3195 (2.40-2.40)

The table below summarises the geometric issues observed across the polymeric chains and their fit to the electron density. The red, orange, yellow and green segments on the lower bar indicate the fraction of residues that contain outliers for ≥ 3 , 2, 1 and 0 types of geometric quality criteria. A grey segment represents the fraction of residues that are not modelled. The numeric value for each fraction is indicated below the corresponding segment, with a dot representing fractions $\leq 5\%$. The upper red bar (where present) indicates the fraction of residues that have poor fit to the electron density. The numeric value is given above the bar.

Mol	Chain	Length	Quality of chain
1	A	400	<div> <div>2%</div> <div> <div></div> <div>77%</div> <div>20%</div> <div>..</div> </div> </div>
1	B	400	<div> <div>%</div> <div> <div></div> <div>79%</div> <div>19%</div> <div>..</div> </div> </div>
1	C	400	<div> <div></div> <div> <div></div> <div>80%</div> <div>17%</div> <div>..</div> </div> </div>
1	D	400	<div> <div>%</div> <div> <div></div> <div>78%</div> <div>18%</div> <div>..</div> </div> </div>
1	E	400	<div> <div>%</div> <div> <div></div> <div>82%</div> <div>15%</div> <div>..</div> </div> </div>
1	F	400	<div> <div></div> <div> <div></div> <div>82%</div> <div>15%</div> <div>..</div> </div> </div>

The following table lists non-polymeric compounds, carbohydrate monomers and non-standard residues in protein, DNA, RNA chains that are outliers for geometric or electron-density-fit criteria:

Mol	Type	Chain	Res	Chirality	Geometry	Clashes	Electron density
2	EPE	A	701	-	-	-	X
2	EPE	B	702	-	-	-	X
2	EPE	D	704	-	-	-	X
2	EPE	E	705	-	-	-	X
3	PG4	A	801	-	-	-	X
3	PG4	B	802	-	-	-	X
3	PG4	D	804	-	-	-	X
3	PG4	E	805	-	-	-	X
3	PG4	F	806	-	-	-	X

2 Entry composition

There are 4 unique types of molecules in this entry. The entry contains 19692 atoms, of which 0 are hydrogens and 0 are deuteriums.

In the tables below, the ZeroOcc column contains the number of atoms modelled with zero occupancy, the AltConf column contains the number of residues with at least one atom in alternate conformation and the Trace column contains the number of residues modelled with at most 2 atoms.

- Molecule 1 is a protein called Hypothetical protein.

Mol	Chain	Residues	Atoms					ZeroOcc	AltConf	Trace
1	A	392	Total	C	N	O	Se	0	0	0
			3167	2040	522	594	11			
1	B	393	Total	C	N	O	Se	0	0	0
			3175	2045	523	595	12			
1	C	391	Total	C	N	O	Se	0	0	0
			3163	2038	521	592	12			
1	D	390	Total	C	N	O	Se	0	0	0
			3155	2033	520	591	11			
1	E	391	Total	C	N	O	Se	0	0	0
			3163	2038	521	592	12			
1	F	392	Total	C	N	O	Se	0	0	0
			3170	2042	522	594	12			

There are 90 discrepancies between the modelled and reference sequences:

Chain	Residue	Modelled	Actual	Comment	Reference
A	-2	SER	-	CLONING ARTIFACT	UNP Q836T6
A	-1	ASN	-	CLONING ARTIFACT	UNP Q836T6
A	0	ALA	-	CLONING ARTIFACT	UNP Q836T6
A	1	MSE	MET	MODIFIED RESIDUE	UNP Q836T6
A	9	MSE	MET	MODIFIED RESIDUE	UNP Q836T6
A	14	MSE	MET	MODIFIED RESIDUE	UNP Q836T6
A	17	MSE	MET	MODIFIED RESIDUE	UNP Q836T6
A	60	MSE	MET	MODIFIED RESIDUE	UNP Q836T6
A	75	MSE	MET	MODIFIED RESIDUE	UNP Q836T6
A	97	MSE	MET	MODIFIED RESIDUE	UNP Q836T6
A	100	MSE	MET	MODIFIED RESIDUE	UNP Q836T6
A	268	MSE	MET	MODIFIED RESIDUE	UNP Q836T6
A	281	MSE	MET	MODIFIED RESIDUE	UNP Q836T6
A	282	MSE	MET	MODIFIED RESIDUE	UNP Q836T6
A	390	MSE	MET	MODIFIED RESIDUE	UNP Q836T6
B	-2	SER	-	CLONING ARTIFACT	UNP Q836T6
B	-1	ASN	-	CLONING ARTIFACT	UNP Q836T6

Continued on next page...

Continued from previous page...

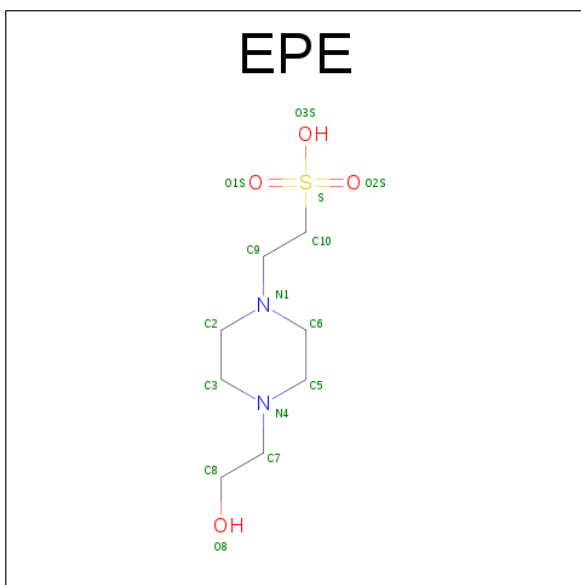
Chain	Residue	Modelled	Actual	Comment	Reference
B	0	ALA	-	CLONING ARTIFACT	UNP Q836T6
B	1	MSE	MET	MODIFIED RESIDUE	UNP Q836T6
B	9	MSE	MET	MODIFIED RESIDUE	UNP Q836T6
B	14	MSE	MET	MODIFIED RESIDUE	UNP Q836T6
B	17	MSE	MET	MODIFIED RESIDUE	UNP Q836T6
B	60	MSE	MET	MODIFIED RESIDUE	UNP Q836T6
B	75	MSE	MET	MODIFIED RESIDUE	UNP Q836T6
B	97	MSE	MET	MODIFIED RESIDUE	UNP Q836T6
B	100	MSE	MET	MODIFIED RESIDUE	UNP Q836T6
B	268	MSE	MET	MODIFIED RESIDUE	UNP Q836T6
B	281	MSE	MET	MODIFIED RESIDUE	UNP Q836T6
B	282	MSE	MET	MODIFIED RESIDUE	UNP Q836T6
B	390	MSE	MET	MODIFIED RESIDUE	UNP Q836T6
C	-2	SER	-	CLONING ARTIFACT	UNP Q836T6
C	-1	ASN	-	CLONING ARTIFACT	UNP Q836T6
C	0	ALA	-	CLONING ARTIFACT	UNP Q836T6
C	1	MSE	MET	MODIFIED RESIDUE	UNP Q836T6
C	9	MSE	MET	MODIFIED RESIDUE	UNP Q836T6
C	14	MSE	MET	MODIFIED RESIDUE	UNP Q836T6
C	17	MSE	MET	MODIFIED RESIDUE	UNP Q836T6
C	60	MSE	MET	MODIFIED RESIDUE	UNP Q836T6
C	75	MSE	MET	MODIFIED RESIDUE	UNP Q836T6
C	97	MSE	MET	MODIFIED RESIDUE	UNP Q836T6
C	100	MSE	MET	MODIFIED RESIDUE	UNP Q836T6
C	268	MSE	MET	MODIFIED RESIDUE	UNP Q836T6
C	281	MSE	MET	MODIFIED RESIDUE	UNP Q836T6
C	282	MSE	MET	MODIFIED RESIDUE	UNP Q836T6
C	390	MSE	MET	MODIFIED RESIDUE	UNP Q836T6
D	-2	SER	-	CLONING ARTIFACT	UNP Q836T6
D	-1	ASN	-	CLONING ARTIFACT	UNP Q836T6
D	0	ALA	-	CLONING ARTIFACT	UNP Q836T6
D	1	MSE	MET	MODIFIED RESIDUE	UNP Q836T6
D	9	MSE	MET	MODIFIED RESIDUE	UNP Q836T6
D	14	MSE	MET	MODIFIED RESIDUE	UNP Q836T6
D	17	MSE	MET	MODIFIED RESIDUE	UNP Q836T6
D	60	MSE	MET	MODIFIED RESIDUE	UNP Q836T6
D	75	MSE	MET	MODIFIED RESIDUE	UNP Q836T6
D	97	MSE	MET	MODIFIED RESIDUE	UNP Q836T6
D	100	MSE	MET	MODIFIED RESIDUE	UNP Q836T6
D	268	MSE	MET	MODIFIED RESIDUE	UNP Q836T6
D	281	MSE	MET	MODIFIED RESIDUE	UNP Q836T6
D	282	MSE	MET	MODIFIED RESIDUE	UNP Q836T6

Continued on next page...

Continued from previous page...

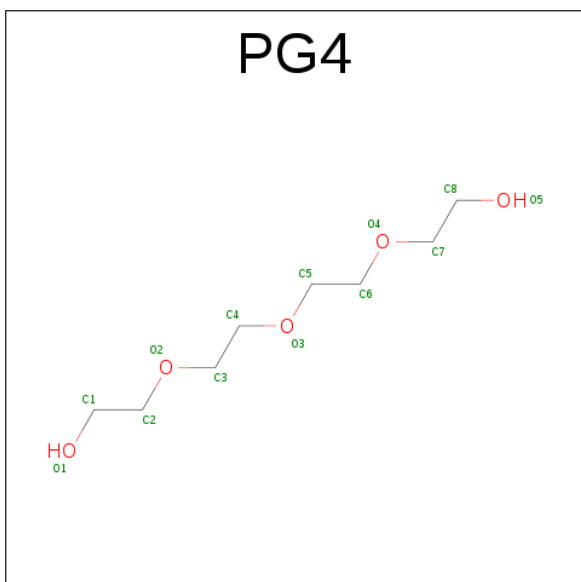
Chain	Residue	Modelled	Actual	Comment	Reference
D	390	MSE	MET	MODIFIED RESIDUE	UNP Q836T6
E	-2	SER	-	CLONING ARTIFACT	UNP Q836T6
E	-1	ASN	-	CLONING ARTIFACT	UNP Q836T6
E	0	ALA	-	CLONING ARTIFACT	UNP Q836T6
E	1	MSE	MET	MODIFIED RESIDUE	UNP Q836T6
E	9	MSE	MET	MODIFIED RESIDUE	UNP Q836T6
E	14	MSE	MET	MODIFIED RESIDUE	UNP Q836T6
E	17	MSE	MET	MODIFIED RESIDUE	UNP Q836T6
E	60	MSE	MET	MODIFIED RESIDUE	UNP Q836T6
E	75	MSE	MET	MODIFIED RESIDUE	UNP Q836T6
E	97	MSE	MET	MODIFIED RESIDUE	UNP Q836T6
E	100	MSE	MET	MODIFIED RESIDUE	UNP Q836T6
E	268	MSE	MET	MODIFIED RESIDUE	UNP Q836T6
E	281	MSE	MET	MODIFIED RESIDUE	UNP Q836T6
E	282	MSE	MET	MODIFIED RESIDUE	UNP Q836T6
E	390	MSE	MET	MODIFIED RESIDUE	UNP Q836T6
F	-2	SER	-	CLONING ARTIFACT	UNP Q836T6
F	-1	ASN	-	CLONING ARTIFACT	UNP Q836T6
F	0	ALA	-	CLONING ARTIFACT	UNP Q836T6
F	1	MSE	MET	MODIFIED RESIDUE	UNP Q836T6
F	9	MSE	MET	MODIFIED RESIDUE	UNP Q836T6
F	14	MSE	MET	MODIFIED RESIDUE	UNP Q836T6
F	17	MSE	MET	MODIFIED RESIDUE	UNP Q836T6
F	60	MSE	MET	MODIFIED RESIDUE	UNP Q836T6
F	75	MSE	MET	MODIFIED RESIDUE	UNP Q836T6
F	97	MSE	MET	MODIFIED RESIDUE	UNP Q836T6
F	100	MSE	MET	MODIFIED RESIDUE	UNP Q836T6
F	268	MSE	MET	MODIFIED RESIDUE	UNP Q836T6
F	281	MSE	MET	MODIFIED RESIDUE	UNP Q836T6
F	282	MSE	MET	MODIFIED RESIDUE	UNP Q836T6
F	390	MSE	MET	MODIFIED RESIDUE	UNP Q836T6

- Molecule 2 is 4-(2-HYDROXYETHYL)-1-PIPERAZINE ETHANESULFONIC ACID (three-letter code: EPE) (formula: C₈H₁₈N₂O₄S).



Mol	Chain	Residues	Atoms					ZeroOcc	AltConf
2	A	1	Total	C	N	O	S	0	0
			15	8	2	4	1		
2	B	1	Total	C	N	O	S	0	0
			15	8	2	4	1		
2	C	1	Total	C	N	O	S	0	0
			15	8	2	4	1		
2	D	1	Total	C	N	O	S	0	0
			15	8	2	4	1		
2	E	1	Total	C	N	O	S	0	0
			15	8	2	4	1		

- Molecule 3 is TETRAETHYLENE GLYCOL (three-letter code: PG4) (formula: C₈H₁₈O₅).



Mol	Chain	Residues	Atoms	ZeroOcc	AltConf
3	A	1	Total C O 13 8 5	0	0
3	B	1	Total C O 13 8 5	0	0
3	C	1	Total C O 13 8 5	0	0
3	D	1	Total C O 13 8 5	0	0
3	E	1	Total C O 13 8 5	0	0
3	F	1	Total C O 13 8 5	0	0

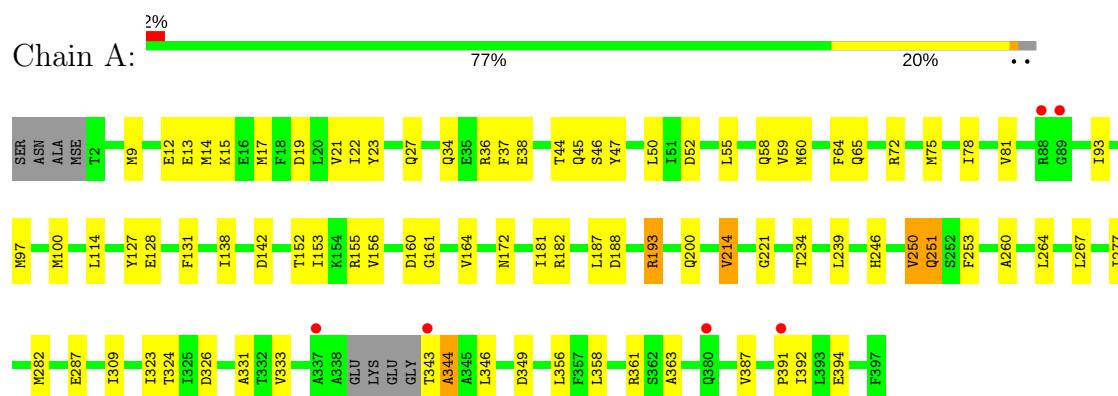
- Molecule 4 is water.

Mol	Chain	Residues	Atoms	ZeroOcc	AltConf
4	A	85	Total O 85 85	0	0
4	B	94	Total O 96 96	0	2
4	C	98	Total O 98 98	0	0
4	D	77	Total O 78 78	0	1
4	E	99	Total O 101 101	0	2
4	F	88	Total O 88 88	0	0

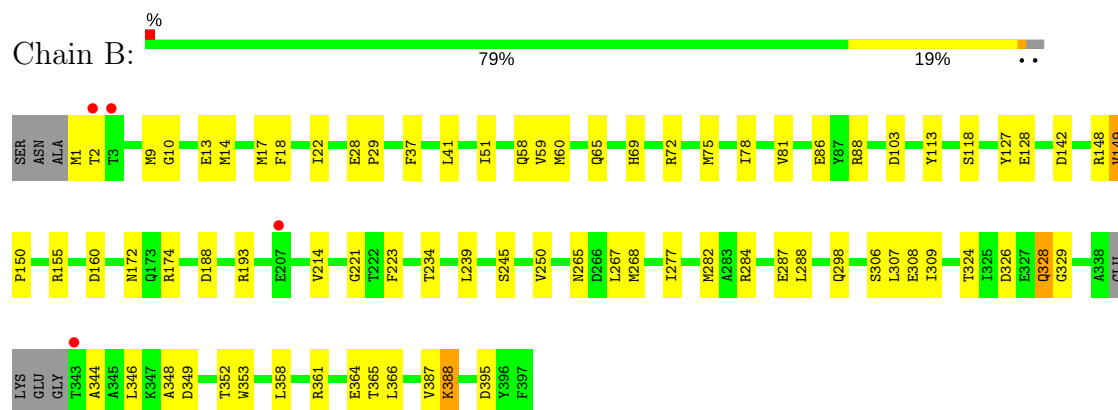
3 Residue-property plots

These plots are drawn for all protein, RNA and DNA chains in the entry. The first graphic for a chain summarises the proportions of the various outlier classes displayed in the second graphic. The second graphic shows the sequence view annotated by issues in geometry and electron density. Residues are color-coded according to the number of geometric quality criteria for which they contain at least one outlier: green = 0, yellow = 1, orange = 2 and red = 3 or more. A red dot above a residue indicates a poor fit to the electron density ($RSRZ > 2$). Stretches of 2 or more consecutive residues without any outlier are shown as a green connector. Residues present in the sample, but not in the model, are shown in grey.

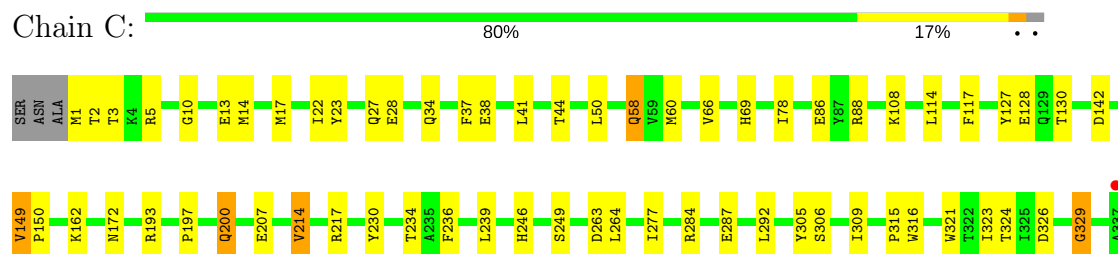
• Molecule 1: Hypothetical protein

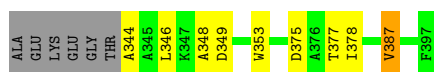


• Molecule 1: Hypothetical protein

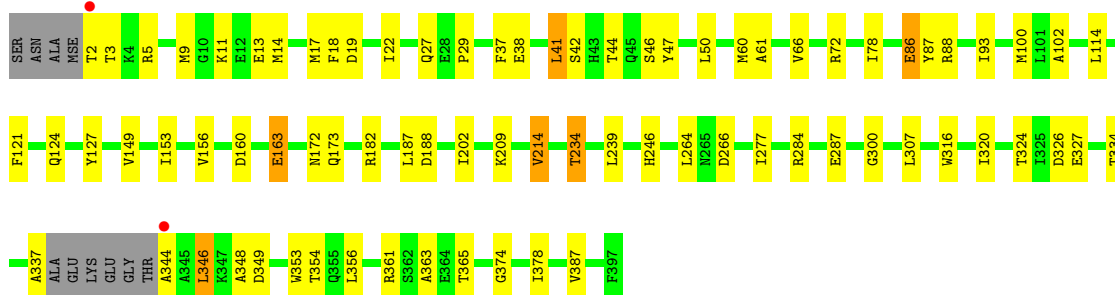
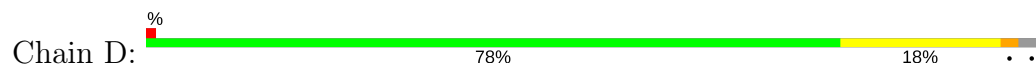


• Molecule 1: Hypothetical protein

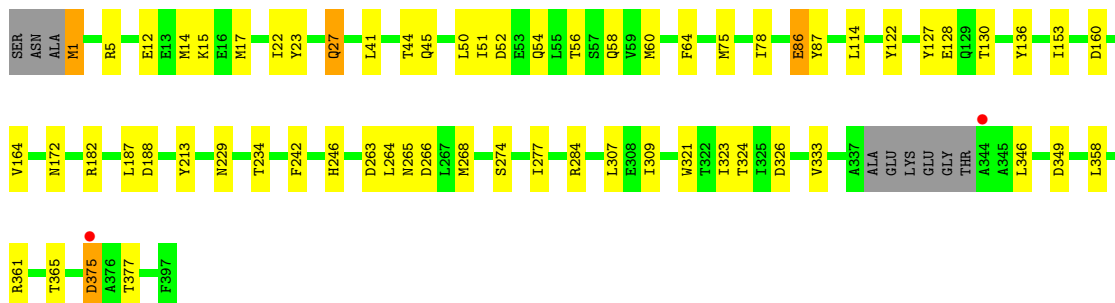
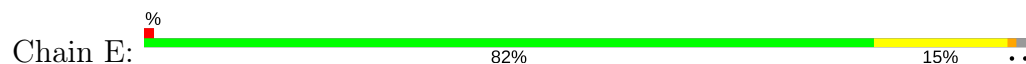




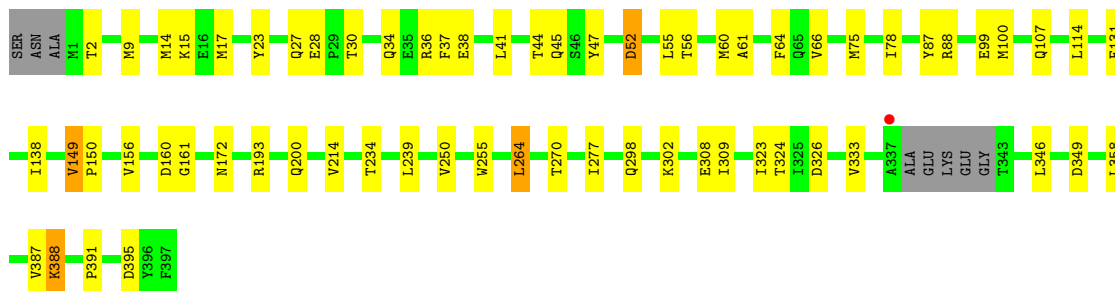
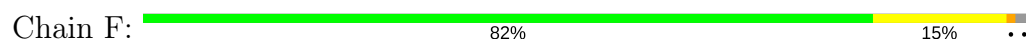
• Molecule 1: Hypothetical protein



• Molecule 1: Hypothetical protein



• Molecule 1: Hypothetical protein



4 Data and refinement statistics

Property	Value	Source
Space group	C 1 2 1	Depositor
Cell constants a, b, c, α , β , γ	189.63Å 104.28Å 152.28Å 90.00° 98.26° 90.00°	Depositor
Resolution (Å)	20.00 – 2.40 50.23 – 2.40	Depositor EDS
% Data completeness (in resolution range)	97.9 (20.00-2.40) 97.9 (50.23-2.40)	Depositor EDS
R_{merge}	0.10	Depositor
R_{sym}	(Not available)	Depositor
$\langle I/\sigma(I) \rangle$ ¹	1.73 (at 2.39Å)	Xtriage
Refinement program	REFMAC 5.2.0019	Depositor
R, R_{free}	0.185 , 0.233 0.190 , 0.235	Depositor DCC
R_{free} test set	5621 reflections (5.27%)	DCC
Wilson B-factor (Å ²)	42.2	Xtriage
Anisotropy	0.223	Xtriage
Bulk solvent k_{sol} (e/Å ³), B_{sol} (Å ²)	0.34 , 53.3	EDS
L-test for twinning ²	$\langle L \rangle = 0.48$, $\langle L^2 \rangle = 0.31$	Xtriage
Estimated twinning fraction	No twinning to report.	Xtriage
F_o, F_c correlation	0.95	EDS
Total number of atoms	19692	wwPDB-VP
Average B, all atoms (Å ²)	40.0	wwPDB-VP

Xtriage's analysis on translational NCS is as follows: *The largest off-origin peak in the Patterson function is 3.13% of the height of the origin peak. No significant pseudotranslation is detected.*

¹Intensities estimated from amplitudes.

²Theoretical values of $\langle |L| \rangle$, $\langle L^2 \rangle$ for acentric reflections are 0.5, 0.333 respectively for untwinned datasets, and 0.375, 0.2 for perfectly twinned datasets.

5 Model quality

5.1 Standard geometry

Bond lengths and bond angles in the following residue types are not validated in this section: PG4, EPE

The Z score for a bond length (or angle) is the number of standard deviations the observed value is removed from the expected value. A bond length (or angle) with $|Z| > 5$ is considered an outlier worth inspection. RMSZ is the root-mean-square of all Z scores of the bond lengths (or angles).

Mol	Chain	Bond lengths		Bond angles	
		RMSZ	# $ Z > 5$	RMSZ	# $ Z > 5$
1	A	0.57	0/3237	0.93	8/4361 (0.2%)
1	B	0.59	0/3245	0.95	8/4371 (0.2%)
1	C	0.62	0/3233	0.94	4/4354 (0.1%)
1	D	0.57	0/3225	0.93	6/4344 (0.1%)
1	E	0.62	0/3233	0.96	8/4354 (0.2%)
1	F	0.60	0/3240	0.94	5/4364 (0.1%)
All	All	0.60	0/19413	0.94	39/26148 (0.1%)

Chiral center outliers are detected by calculating the chiral volume of a chiral center and verifying if the center is modelled as a planar moiety or with the opposite hand. A planarity outlier is detected by checking planarity of atoms in a peptide group, atoms in a mainchain group or atoms of a sidechain that are expected to be planar.

Mol	Chain	#Chirality outliers	#Planarity outliers
1	C	0	1

There are no bond length outliers.

All (39) bond angle outliers are listed below:

Mol	Chain	Res	Type	Atoms	Z	Observed($^{\circ}$)	Ideal($^{\circ}$)
1	D	349	ASP	CB-CG-OD2	8.15	125.63	118.30
1	D	160	ASP	CB-CG-OD2	7.60	125.14	118.30
1	A	326	ASP	CB-CG-OD2	7.52	125.07	118.30
1	F	326	ASP	CB-CG-OD2	7.51	125.06	118.30
1	C	349	ASP	CB-CG-OD2	7.44	125.00	118.30
1	B	188	ASP	CB-CG-OD2	7.44	125.00	118.30
1	E	52	ASP	CB-CG-OD2	7.35	124.92	118.30
1	D	19	ASP	CB-CG-OD2	7.31	124.88	118.30
1	B	349	ASP	CB-CG-OD2	7.16	124.74	118.30
1	D	326	ASP	CB-CG-OD2	7.14	124.73	118.30

Continued on next page...

Continued from previous page...

Mol	Chain	Res	Type	Atoms	Z	Observed(°)	Ideal(°)
1	E	326	ASP	CB-CG-OD2	7.14	124.73	118.30
1	C	263	ASP	CB-CG-OD2	7.07	124.67	118.30
1	F	160	ASP	CB-CG-OD2	6.92	124.53	118.30
1	F	349	ASP	CB-CG-OD2	6.91	124.52	118.30
1	A	349	ASP	CB-CG-OD2	6.87	124.48	118.30
1	E	263	ASP	CB-CG-OD2	6.71	124.34	118.30
1	B	103	ASP	CB-CG-OD2	6.46	124.11	118.30
1	D	266	ASP	CB-CG-OD2	6.38	124.04	118.30
1	F	395	ASP	CB-CG-OD2	6.36	124.03	118.30
1	A	188	ASP	CB-CG-OD2	6.30	123.97	118.30
1	E	375	ASP	CB-CG-OD2	6.22	123.90	118.30
1	E	349	ASP	CB-CG-OD2	6.22	123.89	118.30
1	C	326	ASP	CB-CG-OD2	5.83	123.54	118.30
1	A	160	ASP	CB-CG-OD2	5.54	123.29	118.30
1	C	142	ASP	CB-CG-OD2	5.54	123.29	118.30
1	E	266	ASP	CB-CG-OD2	5.54	123.28	118.30
1	A	142	ASP	CB-CG-OD2	5.42	123.18	118.30
1	F	52	ASP	CB-CG-OD2	5.32	123.09	118.30
1	E	188	ASP	CB-CG-OD2	5.29	123.06	118.30
1	A	19	ASP	CB-CG-OD2	5.27	123.05	118.30
1	B	326	ASP	CB-CG-OD2	5.23	123.01	118.30
1	B	284	ARG	NE-CZ-NH2	-5.23	117.69	120.30
1	D	188	ASP	CB-CG-OD2	5.15	122.94	118.30
1	A	155	ARG	NE-CZ-NH2	-5.12	117.74	120.30
1	E	160	ASP	CB-CG-OD2	5.12	122.91	118.30
1	B	160	ASP	CB-CG-OD2	5.12	122.91	118.30
1	B	395	ASP	CB-CG-OD2	5.08	122.87	118.30
1	B	142	ASP	CB-CG-OD2	5.07	122.86	118.30
1	A	52	ASP	CB-CG-OD2	5.02	122.82	118.30

There are no chirality outliers.

All (1) planarity outliers are listed below:

Mol	Chain	Res	Type	Group
1	C	329	GLY	Peptide

5.2 Too-close contacts [i](#)

In the following table, the Non-H and H(model) columns list the number of non-hydrogen atoms and hydrogen atoms in the chain respectively. The H(added) column lists the number of hydrogen atoms added and optimized by MolProbity. The Clashes column lists the number of clashes within

the asymmetric unit, whereas Symm-Clashes lists symmetry related clashes.

Mol	Chain	Non-H	H(model)	H(added)	Clashes	Symm-Clashes
1	A	3167	0	3090	55	0
1	B	3175	0	3102	48	0
1	C	3163	0	3090	53	0
1	D	3155	0	3078	57	0
1	E	3163	0	3090	39	0
1	F	3170	0	3097	38	0
2	A	15	0	17	0	0
2	B	15	0	17	0	0
2	C	15	0	17	1	0
2	D	15	0	17	0	0
2	E	15	0	17	0	0
3	A	13	0	18	0	0
3	B	13	0	18	0	0
3	C	13	0	18	0	0
3	D	13	0	18	0	0
3	E	13	0	18	0	0
3	F	13	0	18	0	0
4	A	85	0	0	1	0
4	B	96	0	0	1	0
4	C	98	0	0	4	0
4	D	78	0	0	0	0
4	E	101	0	0	3	0
4	F	88	0	0	1	0
All	All	19692	0	18740	278	0

The all-atom clashscore is defined as the number of clashes found per 1000 atoms (including hydrogen atoms). The all-atom clashscore for this structure is 7.

All (278) close contacts within the same asymmetric unit are listed below, sorted by their clash magnitude.

Atom-1	Atom-2	Interatomic distance (Å)	Clash overlap (Å)
1:C:1:MSE:CE	1:C:2:THR:HG23	1.62	1.30
1:A:277:ILE:HD11	1:B:277:ILE:HD11	1.32	1.08
1:B:214:VAL:HG23	1:B:239:LEU:HD22	1.42	1.01
1:C:1:MSE:HE2	1:C:2:THR:CG2	1.90	1.01
1:C:1:MSE:HE2	1:C:2:THR:HG23	1.00	0.99
1:F:214:VAL:HG23	1:F:239:LEU:HD22	1.45	0.98
1:F:14:MSE:HE2	1:F:37:PHE:HD2	1.28	0.95
1:D:14:MSE:HE2	1:D:37:PHE:HD2	1.42	0.84
1:A:323:ILE:CD1	1:A:333:VAL:HG22	2.07	0.83

Continued on next page...

Continued from previous page...

Atom-1	Atom-2	Interatomic distance (Å)	Clash overlap (Å)
1:F:14:MSE:HE3	1:F:38:GLU:HG3	1.60	0.83
1:F:14:MSE:HE2	1:F:37:PHE:CD2	2.15	0.82
1:C:1:MSE:CE	1:C:2:THR:CG2	2.51	0.81
1:A:221:GLY:O	1:A:250:VAL:HG22	1.81	0.80
1:B:214:VAL:CG2	1:B:239:LEU:HD22	2.10	0.80
1:A:277:ILE:CD1	1:B:277:ILE:HD11	2.15	0.76
1:C:1:MSE:HE3	1:C:2:THR:HG23	1.65	0.76
1:C:375:ASP:OD1	1:C:377:THR:HG22	1.86	0.75
1:A:14:MSE:HE2	1:A:37:PHE:HD2	1.50	0.75
1:D:344:ALA:HB1	1:D:378:ILE:HD12	1.68	0.75
1:D:14:MSE:HE3	1:D:38:GLU:HG3	1.69	0.75
1:D:14:MSE:HE3	1:D:38:GLU:CG	2.17	0.74
1:F:9:MSE:HE1	1:F:55:LEU:HD22	1.70	0.73
1:D:214:VAL:HG22	1:D:239:LEU:HD22	1.71	0.73
1:D:14:MSE:HA	1:D:17:MSE:HE3	1.68	0.73
1:A:251:GLN:HA	1:A:251:GLN:HE21	1.54	0.71
1:B:14:MSE:HA	1:B:17:MSE:HE3	1.73	0.71
1:B:78:ILE:HD12	1:B:127:TYR:OH	1.92	0.70
1:D:121:PHE:O	1:D:124:GLN:HG2	1.92	0.70
1:F:44:THR:HG21	1:F:60:MSE:HB3	1.75	0.69
1:C:149:VAL:HG22	1:C:150:PRO:HD2	1.75	0.69
1:B:298:GLN:HE22	1:B:388:LYS:HG3	1.59	0.68
1:C:13:GLU:HB2	1:C:17:MSE:HE2	1.74	0.68
1:D:320:ILE:HG21	1:D:337:ALA:HB2	1.76	0.68
1:A:323:ILE:HD12	1:A:333:VAL:HG22	1.76	0.67
1:E:22:ILE:HG23	1:E:27:GLN:O	1.94	0.67
1:B:221:GLY:O	1:B:250:VAL:HG22	1.94	0.67
1:B:2:THR:HG21	1:B:51:ILE:HG23	1.77	0.66
1:A:214:VAL:CG2	1:A:239:LEU:HD22	2.26	0.66
1:C:14:MSE:HE1	1:C:34:GLN:HG3	1.76	0.66
1:A:14:MSE:HE2	1:A:37:PHE:CD2	2.32	0.65
1:D:22:ILE:HD13	1:D:29:PRO:HB3	1.77	0.65
1:E:14:MSE:HA	1:E:17:MSE:HE3	1.78	0.65
1:F:214:VAL:CG2	1:F:239:LEU:HD22	2.22	0.64
1:D:18:PHE:CE2	1:D:22:ILE:HD11	2.33	0.63
1:E:41:LEU:HD23	1:E:60:MSE:HE2	1.79	0.62
1:B:18:PHE:CE2	1:B:22:ILE:HD11	2.34	0.62
1:C:214:VAL:CG2	1:C:239:LEU:HD22	2.30	0.62
1:D:78:ILE:HD12	1:D:127:TYR:OH	1.99	0.62
1:F:9:MSE:HE1	1:F:55:LEU:CD2	2.29	0.61
1:C:13:GLU:CB	1:C:17:MSE:HE2	2.31	0.61

Continued on next page...

Continued from previous page...

Atom-1	Atom-2	Interatomic distance (Å)	Clash overlap (Å)
1:F:28:GLU:HG3	1:F:30:THR:HG23	1.82	0.60
1:A:156:VAL:HG11	1:A:161:GLY:HA3	1.83	0.60
1:E:277:ILE:HD11	1:F:277:ILE:HD12	1.83	0.60
1:A:22:ILE:HG23	1:A:27:GLN:O	2.02	0.59
1:B:298:GLN:NE2	1:B:388:LYS:HG3	2.17	0.59
1:C:37:PHE:CZ	1:C:60:MSE:HE1	2.38	0.59
1:D:14:MSE:HE2	1:D:37:PHE:CD2	2.31	0.59
1:F:36:ARG:NH2	1:F:193:ARG:NH2	2.51	0.59
1:B:13:GLU:HB2	1:B:17:MSE:HE2	1.84	0.59
1:D:22:ILE:CD1	1:D:29:PRO:HB3	2.33	0.59
1:A:323:ILE:HD11	1:A:331:ALA:HB1	1.86	0.58
1:C:305:TYR:O	1:C:323:ILE:HG22	2.03	0.58
1:E:182:ARG:HD3	1:E:187:LEU:HD13	1.83	0.58
1:A:23:TYR:OH	1:C:246:HIS:HE1	1.87	0.58
1:E:164:VAL:HG23	4:E:877:HOH:O	2.03	0.58
1:E:265:ASN:OD1	1:E:268:MSE:CE	2.52	0.58
1:D:320:ILE:CG2	1:D:337:ALA:HB2	2.34	0.57
1:B:245:SER:OG	1:D:88:ARG:HD3	2.04	0.57
1:D:78:ILE:CD1	1:D:100:MSE:HE1	2.35	0.57
1:C:214:VAL:HG23	1:C:239:LEU:HD22	1.87	0.57
1:B:78:ILE:CD1	1:B:127:TYR:OH	2.53	0.57
1:D:44:THR:HG21	1:D:60:MSE:HB3	1.87	0.57
1:B:149:VAL:HG22	1:B:150:PRO:HD2	1.86	0.56
4:E:867:HOH:O	1:F:270:THR:HG23	2.04	0.56
1:C:309:ILE:HD13	1:C:321:TRP:CD1	2.40	0.56
1:C:14:MSE:HE2	1:C:37:PHE:HD2	1.70	0.56
1:C:14:MSE:HA	1:C:17:MSE:HE3	1.87	0.56
1:A:138:ILE:HG22	1:A:253:PHE:HB2	1.87	0.56
1:B:10:GLY:O	1:B:17:MSE:HE1	2.06	0.56
1:D:246:HIS:HE1	1:F:23:TYR:OH	1.89	0.56
1:C:375:ASP:CG	1:C:377:THR:HG22	2.25	0.55
1:A:182:ARG:HD3	1:A:187:LEU:HD13	1.88	0.55
1:D:14:MSE:HE3	1:D:38:GLU:HG2	1.86	0.55
1:E:41:LEU:CD2	1:E:60:MSE:HE2	2.36	0.55
1:A:14:MSE:HA	1:A:17:MSE:HE3	1.88	0.55
1:D:356:LEU:HD11	1:D:363:ALA:HB2	1.89	0.55
1:F:298:GLN:HE22	1:F:388:LYS:HE3	1.71	0.55
1:A:9:MSE:HE3	1:A:13:GLU:HB3	1.89	0.55
1:D:17:MSE:HE1	1:D:41:LEU:HD11	1.87	0.55
1:B:155:ARG:NE	1:D:86:GLU:OE2	2.37	0.55
1:D:2:THR:HG22	1:D:3:THR:HG23	1.88	0.55

Continued on next page...

Continued from previous page...

Atom-1	Atom-2	Interatomic distance (Å)	Clash overlap (Å)
1:A:361:ARG:NH2	1:B:267:LEU:HD21	2.21	0.55
1:D:78:ILE:HD13	1:D:100:MSE:HE1	1.89	0.55
1:E:309:ILE:HD13	1:E:321:TRP:CD1	2.41	0.54
1:F:56:THR:HG22	1:F:87:TYR:CE1	2.43	0.54
1:A:22:ILE:HD13	1:A:27:GLN:HE21	1.73	0.54
1:B:18:PHE:CZ	1:B:22:ILE:HD11	2.42	0.54
1:D:163:GLU:CD	1:D:163:GLU:H	2.11	0.54
1:A:44:THR:HG21	1:A:60:MSE:HB3	1.90	0.54
1:A:22:ILE:HD13	1:A:27:GLN:HB2	1.90	0.53
1:B:309:ILE:N	1:B:309:ILE:CD1	2.71	0.53
1:C:149:VAL:HG22	1:C:150:PRO:CD	2.38	0.53
1:D:214:VAL:CG2	1:D:239:LEU:HD22	2.37	0.53
1:A:131:PHE:CE2	1:A:391:PRO:HB2	2.43	0.53
1:B:65:GLN:HE22	1:B:72:ARG:HD3	1.72	0.53
1:B:22:ILE:CD1	1:B:29:PRO:HB3	2.38	0.53
1:C:23:TYR:OH	1:E:246:HIS:HE1	1.91	0.53
1:C:22:ILE:HD13	1:C:27:GLN:HG3	1.91	0.52
1:A:343:THR:O	1:A:344:ALA:HB3	2.09	0.52
1:E:22:ILE:HD13	1:E:27:GLN:HG3	1.91	0.52
1:F:47:TYR:CE1	1:F:100:MSE:HG3	2.45	0.52
1:B:22:ILE:HD13	1:B:29:PRO:HB3	1.92	0.52
1:D:9:MSE:HB2	1:D:46:SER:HB3	1.92	0.51
1:B:309:ILE:N	1:B:309:ILE:HD12	2.25	0.51
1:D:307:LEU:HD22	1:D:353:TRP:CH2	2.45	0.51
1:D:11:LYS:HG2	1:D:41:LEU:HD13	1.91	0.51
1:F:78:ILE:HB	1:F:114:LEU:HB3	1.93	0.51
1:C:14:MSE:HE2	1:C:37:PHE:CD2	2.45	0.51
1:B:348:ALA:HB1	1:B:352:THR:HB	1.93	0.51
1:E:323:ILE:HG22	1:E:333:VAL:HG13	1.93	0.50
1:F:14:MSE:HE1	1:F:34:GLN:HG3	1.94	0.50
1:A:214:VAL:HG22	1:A:239:LEU:HD22	1.92	0.50
1:B:308:GLU:C	1:B:309:ILE:HD12	2.32	0.50
1:C:127:TYR:CE2	1:C:284:ARG:HG2	2.46	0.50
1:C:14:MSE:HE1	1:C:34:GLN:CG	2.41	0.50
1:A:251:GLN:CA	1:A:251:GLN:HE21	2.23	0.49
1:A:246:HIS:HE1	1:E:23:TYR:OH	1.95	0.49
1:F:149:VAL:HG22	1:F:150:PRO:HD2	1.94	0.49
1:F:255:TRP:CZ3	1:F:264:LEU:HD23	2.46	0.49
1:C:306:SER:OG	1:C:344:ALA:HA	2.13	0.49
1:D:78:ILE:CD1	1:D:127:TYR:OH	2.59	0.49
1:A:21:VAL:HG23	1:A:58:GLN:HE22	1.78	0.49

Continued on next page...

Continued from previous page...

Atom-1	Atom-2	Interatomic distance (Å)	Clash overlap (Å)
1:C:277:ILE:HD11	1:D:277:ILE:HD12	1.94	0.49
1:C:292:LEU:HD13	1:C:323:ILE:HD12	1.94	0.49
1:F:14:MSE:HE3	1:F:38:GLU:CG	2.36	0.49
1:C:44:THR:HG21	1:C:60:MSE:HB3	1.94	0.49
1:D:93:ILE:HD12	1:D:93:ILE:H	1.77	0.49
1:F:131:PHE:CE2	1:F:391:PRO:HB2	2.48	0.49
1:A:9:MSE:HE3	1:A:13:GLU:CB	2.44	0.48
1:A:50:LEU:HD23	1:A:55:LEU:HA	1.95	0.48
1:E:58:GLN:HE22	1:E:60:MSE:SE	2.47	0.48
1:A:13:GLU:HB2	1:A:17:MSE:HE2	1.96	0.48
1:A:164:VAL:HG23	4:A:877:HOH:O	2.13	0.48
1:E:136:TYR:OH	1:E:264:LEU:HD22	2.14	0.48
1:E:50:LEU:HA	1:E:54:GLN:O	2.13	0.48
1:F:14:MSE:HA	1:F:17:MSE:HE3	1.95	0.48
1:A:114:LEU:HD12	1:A:114:LEU:C	2.35	0.47
1:D:22:ILE:HG23	1:D:27:GLN:O	2.15	0.47
1:E:44:THR:HG21	1:E:60:MSE:HB3	1.97	0.47
1:C:128:GLU:O	1:C:130:THR:HG23	2.14	0.47
1:C:348:ALA:HB3	1:C:353:TRP:CE2	2.50	0.47
1:C:37:PHE:HZ	1:C:60:MSE:HE1	1.79	0.47
1:C:309:ILE:HD13	1:C:321:TRP:HD1	1.77	0.47
1:A:81:VAL:HG13	1:A:93:ILE:HD12	1.97	0.47
1:B:9:MSE:HE3	1:B:13:GLU:CB	2.45	0.47
1:B:223:PHE:N	1:B:250:VAL:HG21	2.30	0.47
1:A:97:MSE:HE1	1:A:127:TYR:HE1	1.80	0.46
1:A:9:MSE:HE2	1:A:55:LEU:HD22	1.98	0.46
1:E:128:GLU:O	1:E:130:THR:HG23	2.15	0.46
1:E:182:ARG:HD3	1:E:187:LEU:CD1	2.46	0.46
1:B:387:VAL:HG22	1:B:388:LYS:NZ	2.30	0.46
1:C:305:TYR:HB2	1:C:323:ILE:CG2	2.46	0.46
1:B:59:VAL:HG13	1:B:81:VAL:HG22	1.97	0.46
1:A:343:THR:O	1:A:344:ALA:CB	2.63	0.46
1:E:361:ARG:HH21	1:E:365:THR:HG21	1.81	0.46
1:F:45:GLN:HE22	1:F:107:GLN:HE22	1.63	0.46
1:A:44:THR:HG22	1:A:45:GLN:N	2.30	0.46
1:F:37:PHE:CZ	1:F:60:MSE:HE1	2.50	0.46
1:C:108:LYS:HE3	4:C:814:HOH:O	2.15	0.46
1:F:78:ILE:O	4:F:850:HOH:O	2.21	0.46
1:A:260:ALA:HB2	1:A:392:ILE:HD11	1.96	0.46
1:E:44:THR:HG22	1:E:45:GLN:N	2.31	0.45
1:E:64:PHE:HB2	1:E:75:MSE:HE3	1.98	0.45

Continued on next page...

Continued from previous page...

Atom-1	Atom-2	Interatomic distance (Å)	Clash overlap (Å)
1:E:307:LEU:HD11	1:E:323:ILE:HD13	1.99	0.45
4:C:898:HOH:O	1:D:234:THR:CG2	2.65	0.45
1:D:361:ARG:HH21	1:D:365:THR:HG21	1.81	0.45
1:A:182:ARG:HD3	1:A:187:LEU:CD1	2.45	0.45
1:B:361:ARG:HH21	1:B:365:THR:HG21	1.82	0.45
1:F:298:GLN:HE22	1:F:388:LYS:CE	2.29	0.45
1:A:309:ILE:HD12	1:A:309:ILE:N	2.32	0.45
1:A:59:VAL:HG13	1:A:81:VAL:HG22	1.99	0.45
1:A:214:VAL:HG23	1:A:239:LEU:HD22	1.96	0.45
1:D:346:LEU:HD12	1:D:374:GLY:HA3	1.99	0.45
1:C:117:PHE:CE2	2:C:703:EPE:H92	2.52	0.44
1:C:69:HIS:NE2	1:C:387:VAL:HG11	2.32	0.44
1:A:356:LEU:HD11	1:A:363:ALA:HB2	1.99	0.44
1:B:307:LEU:HD22	1:B:353:TRP:CH2	2.53	0.44
1:E:41:LEU:CD2	1:E:60:MSE:CE	2.96	0.44
1:A:153:ILE:HD13	1:A:239:LEU:HD23	1.99	0.44
1:C:315:PRO:HD2	1:C:316:TRP:CZ3	2.52	0.44
1:E:1:MSE:HA	1:E:1:MSE:HE2	1.99	0.44
1:A:72:ARG:HG3	1:A:181:ILE:CD1	2.47	0.44
1:B:18:PHE:CE2	1:B:22:ILE:CD1	3.00	0.44
1:D:9:MSE:HE3	1:D:13:GLU:HB3	1.99	0.44
4:C:898:HOH:O	1:D:234:THR:HG22	2.17	0.44
1:C:10:GLY:O	1:C:17:MSE:HE1	2.17	0.44
1:C:5:ARG:NH1	1:C:50:LEU:HD12	2.33	0.44
1:B:2:THR:HG21	1:B:51:ILE:CG2	2.47	0.44
1:C:1:MSE:HE3	1:C:2:THR:CG2	2.37	0.44
1:B:75:MSE:HE2	1:B:113:TYR:CD2	2.53	0.44
1:C:1:MSE:C	1:C:1:MSE:HE3	2.38	0.44
1:E:114:LEU:C	1:E:114:LEU:HD12	2.38	0.44
1:F:309:ILE:N	1:F:309:ILE:HD12	2.33	0.44
1:D:348:ALA:HB3	1:D:353:TRP:CE2	2.53	0.44
1:E:78:ILE:HB	1:E:114:LEU:HB3	1.98	0.44
1:A:97:MSE:HE1	1:A:127:TYR:CE1	2.52	0.43
1:C:58:GLN:OE1	1:C:60:MSE:HE3	2.18	0.43
1:D:344:ALA:CB	1:D:378:ILE:HD12	2.43	0.43
1:A:47:TYR:CE1	1:A:100:MSE:HG3	2.53	0.43
1:D:114:LEU:C	1:D:114:LEU:HD12	2.38	0.43
1:E:234:THR:HG22	4:E:885:HOH:O	2.17	0.43
1:F:64:PHE:HB2	1:F:75:MSE:HE3	2.01	0.43
1:C:348:ALA:HB3	1:C:353:TRP:NE1	2.34	0.43
1:A:264:LEU:HD12	1:A:267:LEU:CD1	2.49	0.43

Continued on next page...

Continued from previous page...

Atom-1	Atom-2	Interatomic distance (Å)	Clash overlap (Å)
1:A:78:ILE:HB	1:A:114:LEU:HB3	2.00	0.43
1:E:153:ILE:HD13	1:E:242:PHE:HB2	1.99	0.43
1:E:56:THR:HG22	1:E:87:TYR:CE1	2.54	0.43
1:C:230:TYR:CD1	1:C:236:PHE:HB2	2.53	0.43
1:F:323:ILE:HG13	1:F:333:VAL:HG22	2.00	0.43
1:B:37:PHE:CZ	1:B:60:MSE:HE1	2.53	0.43
1:C:375:ASP:HB3	1:C:378:ILE:HG12	2.01	0.43
1:F:255:TRP:HZ3	1:F:264:LEU:HD23	1.84	0.43
1:D:114:LEU:HD12	1:D:114:LEU:O	2.19	0.43
1:E:114:LEU:HD21	1:E:122:TYR:CD2	2.53	0.43
1:E:375:ASP:OD1	1:E:377:THR:HG22	2.18	0.43
1:D:5:ARG:NH1	1:D:50:LEU:HD12	2.34	0.43
1:F:308:GLU:C	1:F:309:ILE:HD12	2.39	0.43
1:B:41:LEU:HD21	1:B:60:MSE:HE2	2.01	0.42
1:D:13:GLU:C	1:D:17:MSE:HE2	2.40	0.42
1:C:78:ILE:HB	1:C:114:LEU:HB3	2.01	0.42
1:C:277:ILE:HD11	1:D:277:ILE:CD1	2.49	0.42
1:F:9:MSE:HE3	1:F:17:MSE:HG2	2.00	0.42
1:C:197:PRO:O	1:C:217:ARG:NH1	2.50	0.42
1:D:300:GLY:O	1:D:327:GLU:HA	2.19	0.42
1:D:44:THR:HG23	1:D:61:ALA:C	2.40	0.42
1:E:41:LEU:HD21	1:E:60:MSE:CE	2.49	0.42
1:D:47:TYR:CE1	1:D:100:MSE:HG3	2.55	0.42
1:D:102:ALA:HA	1:D:316:TRP:CH2	2.55	0.42
1:E:309:ILE:HD13	1:E:321:TRP:HD1	1.83	0.42
1:A:114:LEU:O	1:A:114:LEU:HD12	2.20	0.41
1:B:69:HIS:NE2	1:B:387:VAL:HG11	2.35	0.41
1:E:309:ILE:HD12	1:E:309:ILE:N	2.34	0.41
1:B:288:LEU:CD2	1:B:309:ILE:HG12	2.50	0.41
1:D:78:ILE:HD11	1:D:100:MSE:CE	2.49	0.41
1:F:302:LYS:HE2	1:F:324:THR:HG21	2.02	0.41
1:A:128:GLU:HA	1:A:282:MSE:HE2	2.02	0.41
1:C:22:ILE:HD13	1:C:22:ILE:HA	1.94	0.41
1:B:329:GLY:HA3	4:B:845:HOH:O	2.20	0.41
1:E:213:TYR:OH	1:E:229:ASN:ND2	2.45	0.41
1:E:86:GLU:H	1:E:86:GLU:CD	2.23	0.41
1:A:65:GLN:HB3	1:A:181:ILE:HD12	2.01	0.41
1:A:36:ARG:NE	1:A:193:ARG:HD3	2.36	0.41
1:B:128:GLU:HA	1:B:282:MSE:HE2	2.03	0.41
1:E:127:TYR:CE2	1:E:284:ARG:HG2	2.55	0.41
1:E:51:ILE:HD12	1:E:56:THR:HG21	2.02	0.41

Continued on next page...

Continued from previous page...

Atom-1	Atom-2	Interatomic distance (Å)	Clash overlap (Å)
1:B:2:THR:CG2	1:B:51:ILE:HG23	2.47	0.41
1:D:17:MSE:CE	1:D:41:LEU:HD11	2.51	0.41
1:D:284:ARG:HA	1:D:354:THR:HG21	2.01	0.41
1:A:64:PHE:HB2	1:A:75:MSE:HE3	2.02	0.41
1:C:329:GLY:HA3	4:C:853:HOH:O	2.20	0.41
1:A:46:SER:HB2	1:A:60:MSE:HE2	2.03	0.41
1:C:200:GLN:HB2	1:C:200:GLN:HE21	1.74	0.41
1:D:182:ARG:HD3	1:D:187:LEU:HD13	2.03	0.41
1:F:2:THR:HG23	1:F:52:ASP:OD2	2.21	0.41
1:B:265:ASN:OD1	1:B:268:MSE:CE	2.69	0.40
1:B:352:THR:HG23	1:B:366:LEU:HD22	2.04	0.40
1:B:9:MSE:HE3	1:B:13:GLU:HB3	2.02	0.40
1:C:14:MSE:HE3	1:C:38:GLU:HG3	2.04	0.40
1:D:172:ASN:OD1	1:D:173:GLN:N	2.53	0.40
1:D:86:GLU:OE1	1:D:87:TYR:CE1	2.74	0.40
1:F:156:VAL:HG11	1:F:161:GLY:HA3	2.02	0.40
1:B:14:MSE:CA	1:B:17:MSE:HE3	2.47	0.40
1:B:288:LEU:HD22	1:B:309:ILE:HG12	2.03	0.40
1:F:44:THR:HG23	1:F:61:ALA:O	2.21	0.40
1:F:87:TYR:C	1:F:88:ARG:HG3	2.41	0.40
1:B:75:MSE:HE2	1:B:113:TYR:CE2	2.56	0.40
1:D:11:LYS:HE2	1:D:42:SER:HA	2.04	0.40
1:D:153:ILE:HA	1:D:202:ILE:O	2.22	0.40

There are no symmetry-related clashes.

5.3 Torsion angles [i](#)

5.3.1 Protein backbone [i](#)

In the following table, the Percentiles column shows the percent Ramachandran outliers of the chain as a percentile score with respect to all X-ray entries followed by that with respect to entries of similar resolution.

The Analysed column shows the number of residues for which the backbone conformation was analysed, and the total number of residues.

Mol	Chain	Analysed	Favoured	Allowed	Outliers	Percentiles
1	A	388/400 (97%)	377 (97%)	10 (3%)	1 (0%)	44 60
1	B	389/400 (97%)	377 (97%)	10 (3%)	2 (0%)	32 46

Continued on next page...

Continued from previous page...

Mol	Chain	Analysed	Favoured	Allowed	Outliers	Percentiles	
1	C	387/400 (97%)	375 (97%)	12 (3%)	0	100	100
1	D	386/400 (96%)	378 (98%)	8 (2%)	0	100	100
1	E	387/400 (97%)	378 (98%)	9 (2%)	0	100	100
1	F	388/400 (97%)	377 (97%)	11 (3%)	0	100	100
All	All	2325/2400 (97%)	2262 (97%)	60 (3%)	3 (0%)	55	72

All (3) Ramachandran outliers are listed below:

Mol	Chain	Res	Type
1	B	344	ALA
1	A	344	ALA
1	B	328	GLN

5.3.2 Protein sidechains ⓘ

In the following table, the Percentiles column shows the percent sidechain outliers of the chain as a percentile score with respect to all X-ray entries followed by that with respect to entries of similar resolution.

The Analysed column shows the number of residues for which the sidechain conformation was analysed, and the total number of residues.

Mol	Chain	Analysed	Rotameric	Outliers	Percentiles	
1	A	328/322 (102%)	310 (94%)	18 (6%)	25	40
1	B	329/322 (102%)	309 (94%)	20 (6%)	22	34
1	C	328/322 (102%)	307 (94%)	21 (6%)	20	32
1	D	327/322 (102%)	311 (95%)	16 (5%)	29	46
1	E	328/322 (102%)	317 (97%)	11 (3%)	42	63
1	F	329/322 (102%)	313 (95%)	16 (5%)	29	46
All	All	1969/1932 (102%)	1867 (95%)	102 (5%)	27	43

All (102) residues with a non-rotameric sidechain are listed below:

Mol	Chain	Res	Type
1	A	12	GLU
1	A	15	LYS
1	A	34	GLN
1	A	38	GLU

Continued on next page...

Continued from previous page...

Mol	Chain	Res	Type
1	A	152	THR
1	A	172	ASN
1	A	193	ARG
1	A	200	GLN
1	A	214	VAL
1	A	234	THR
1	A	250	VAL
1	A	251	GLN
1	A	287	GLU
1	A	324	THR
1	A	346	LEU
1	A	358	LEU
1	A	387	VAL
1	A	394	GLU
1	B	1	MSE
1	B	28	GLU
1	B	58	GLN
1	B	86	GLU
1	B	88	ARG
1	B	118	SER
1	B	148	ARG
1	B	149	VAL
1	B	172	ASN
1	B	174	ARG
1	B	193	ARG
1	B	234	THR
1	B	287	GLU
1	B	306	SER
1	B	324	THR
1	B	328	GLN
1	B	346	LEU
1	B	358	LEU
1	B	364	GLU
1	B	388	LYS
1	C	3	THR
1	C	28	GLU
1	C	41	LEU
1	C	58	GLN
1	C	66	VAL
1	C	86	GLU
1	C	88	ARG
1	C	149	VAL

Continued on next page...

Continued from previous page...

Mol	Chain	Res	Type
1	C	162	LYS
1	C	172	ASN
1	C	193	ARG
1	C	200	GLN
1	C	207	GLU
1	C	214	VAL
1	C	234	THR
1	C	249	SER
1	C	264	LEU
1	C	287	GLU
1	C	324	THR
1	C	346	LEU
1	C	387	VAL
1	D	41	LEU
1	D	66	VAL
1	D	72	ARG
1	D	86	GLU
1	D	149	VAL
1	D	156	VAL
1	D	163	GLU
1	D	209	LYS
1	D	214	VAL
1	D	234	THR
1	D	264	LEU
1	D	287	GLU
1	D	324	THR
1	D	334	THR
1	D	346	LEU
1	D	387	VAL
1	E	1	MSE
1	E	5	ARG
1	E	12	GLU
1	E	15	LYS
1	E	27	GLN
1	E	86	GLU
1	E	172	ASN
1	E	274	SER
1	E	324	THR
1	E	346	LEU
1	E	358	LEU
1	F	15	LYS
1	F	27	GLN

Continued on next page...

Continued from previous page...

Mol	Chain	Res	Type
1	F	41	LEU
1	F	66	VAL
1	F	99	GLU
1	F	138	ILE
1	F	149	VAL
1	F	172	ASN
1	F	200	GLN
1	F	234	THR
1	F	250	VAL
1	F	264	LEU
1	F	346	LEU
1	F	358	LEU
1	F	387	VAL
1	F	388	LYS

Some sidechains can be flipped to improve hydrogen bonding and reduce clashes. All (38) such sidechains are listed below:

Mol	Chain	Res	Type
1	A	27	GLN
1	A	58	GLN
1	A	129	GLN
1	A	173	GLN
1	A	200	GLN
1	A	246	HIS
1	A	251	GLN
1	A	289	GLN
1	A	384	GLN
1	B	27	GLN
1	B	65	GLN
1	B	200	GLN
1	B	246	HIS
1	B	298	GLN
1	C	129	GLN
1	C	200	GLN
1	C	246	HIS
1	C	289	GLN
1	C	384	GLN
1	D	45	GLN
1	D	129	GLN
1	D	173	GLN
1	D	200	GLN
1	D	233	ASN

Continued on next page...

Continued from previous page...

Mol	Chain	Res	Type
1	D	246	HIS
1	D	289	GLN
1	E	58	GLN
1	E	65	GLN
1	E	129	GLN
1	E	200	GLN
1	E	246	HIS
1	F	45	GLN
1	F	129	GLN
1	F	200	GLN
1	F	233	ASN
1	F	246	HIS
1	F	298	GLN
1	F	384	GLN

5.3.3 RNA [i](#)

There are no RNA molecules in this entry.

5.4 Non-standard residues in protein, DNA, RNA chains [i](#)

There are no non-standard protein/DNA/RNA residues in this entry.

5.5 Carbohydrates [i](#)

There are no carbohydrates in this entry.

5.6 Ligand geometry [i](#)

11 ligands are modelled in this entry.

In the following table, the Counts columns list the number of bonds (or angles) for which Mogul statistics could be retrieved, the number of bonds (or angles) that are observed in the model and the number of bonds (or angles) that are defined in the chemical component dictionary. The Link column lists molecule types, if any, to which the group is linked. The Z score for a bond length (or angle) is the number of standard deviations the observed value is removed from the expected value. A bond length (or angle) with $|Z| > 2$ is considered an outlier worth inspection. RMSZ is the root-mean-square of all Z scores of the bond lengths (or angles).

Mol	Type	Chain	Res	Link	Bond lengths			Bond angles		
					Counts	RMSZ	# Z > 2	Counts	RMSZ	# Z > 2
2	EPE	A	701	-	15,15,15	0.84	1 (6%)	18,20,20	1.92	4 (22%)
3	PG4	A	801	-	12,12,12	0.61	0	11,11,11	0.39	0
2	EPE	B	702	-	15,15,15	0.91	1 (6%)	18,20,20	1.69	3 (16%)
3	PG4	B	802	-	12,12,12	0.58	0	11,11,11	0.16	0
2	EPE	C	703	-	15,15,15	0.95	1 (6%)	18,20,20	1.70	4 (22%)
3	PG4	C	803	-	12,12,12	0.64	0	11,11,11	0.40	0
2	EPE	D	704	-	15,15,15	0.97	1 (6%)	18,20,20	1.87	3 (16%)
3	PG4	D	804	-	12,12,12	0.67	0	11,11,11	0.40	0
2	EPE	E	705	-	15,15,15	0.68	1 (6%)	18,20,20	1.63	3 (16%)
3	PG4	E	805	-	12,12,12	0.59	0	11,11,11	0.30	0
3	PG4	F	806	-	12,12,12	0.58	0	11,11,11	0.45	0

In the following table, the Chirals column lists the number of chiral outliers, the number of chiral centers analysed, the number of these observed in the model and the number defined in the chemical component dictionary. Similar counts are reported in the Torsion and Rings columns. '-' means no outliers of that kind were identified.

Mol	Type	Chain	Res	Link	Chirals	Torsions	Rings
2	EPE	A	701	-	-	0/9/19/19	0/1/1/1
3	PG4	A	801	-	-	0/10/10/10	0/0/0/0
2	EPE	B	702	-	-	0/9/19/19	0/1/1/1
3	PG4	B	802	-	-	0/10/10/10	0/0/0/0
2	EPE	C	703	-	-	0/9/19/19	0/1/1/1
3	PG4	C	803	-	-	0/10/10/10	0/0/0/0
2	EPE	D	704	-	-	0/9/19/19	0/1/1/1
3	PG4	D	804	-	-	0/10/10/10	0/0/0/0
2	EPE	E	705	-	-	0/9/19/19	0/1/1/1
3	PG4	E	805	-	-	0/10/10/10	0/0/0/0
3	PG4	F	806	-	-	0/10/10/10	0/0/0/0

All (5) bond length outliers are listed below:

Mol	Chain	Res	Type	Atoms	Z	Observed(Å)	Ideal(Å)
2	E	705	EPE	C10-S	2.40	1.81	1.77
2	C	703	EPE	C10-S	2.81	1.81	1.77
2	A	701	EPE	C10-S	2.91	1.81	1.77
2	B	702	EPE	C10-S	3.20	1.82	1.77
2	D	704	EPE	C10-S	3.49	1.82	1.77

All (17) bond angle outliers are listed below:

Mol	Chain	Res	Type	Atoms	Z	Observed(°)	Ideal(°)
2	C	703	EPE	C9-N1-C6	-2.16	105.72	111.26
2	B	702	EPE	C2-C3-N4	2.01	114.70	110.63
2	D	704	EPE	O1S-S-C10	2.08	108.58	106.79
2	C	703	EPE	C3-C2-N1	2.36	115.40	110.63
2	E	705	EPE	O1S-S-C10	2.43	108.88	106.79
2	C	703	EPE	C2-C3-N4	2.74	116.19	110.63
2	A	701	EPE	O1S-S-C10	2.77	109.17	106.79
2	A	701	EPE	C6-C5-N4	2.92	116.54	110.63
2	E	705	EPE	O3S-S-C10	3.52	110.38	106.06
2	B	702	EPE	O1S-S-C10	3.67	109.95	106.79
2	A	701	EPE	O3S-S-C10	3.94	110.91	106.06
2	E	705	EPE	O2S-S-C10	4.26	110.45	106.79
2	D	704	EPE	O3S-S-C10	4.31	111.35	106.06
2	A	701	EPE	O2S-S-C10	4.42	110.59	106.79
2	D	704	EPE	O2S-S-C10	4.57	110.71	106.79
2	B	702	EPE	O2S-S-C10	4.85	110.95	106.79
2	C	703	EPE	O2S-S-C10	4.85	110.96	106.79

There are no chirality outliers.

There are no torsion outliers.

There are no ring outliers.

1 monomer is involved in 1 short contact:

Mol	Chain	Res	Type	Clashes	Symm-Clashes
2	C	703	EPE	1	0

5.7 Other polymers [i](#)

There are no such residues in this entry.

5.8 Polymer linkage issues [i](#)

There are no chain breaks in this entry.

6 Fit of model and data

6.1 Protein, DNA and RNA chains

In the following table, the column labelled ‘#RSRZ> 2’ contains the number (and percentage) of RSRZ outliers, followed by percent RSRZ outliers for the chain as percentile scores relative to all X-ray entries and entries of similar resolution. The OWAB column contains the minimum, median, 95th percentile and maximum values of the occupancy-weighted average B-factor per residue. The column labelled ‘Q< 0.9’ lists the number of (and percentage) of residues with an average occupancy less than 0.9.

Mol	Chain	Analysed	<RSRZ>	#RSRZ>2		OWAB(Å ²)	Q<0.9
1	A	381/400 (95%)	-0.04	6 (1%)	72 70	28, 39, 50, 55	0
1	B	381/400 (95%)	-0.23	4 (1%)	82 80	29, 39, 51, 68	0
1	C	379/400 (94%)	-0.26	1 (0%)	93 93	30, 39, 50, 65	0
1	D	379/400 (94%)	-0.19	2 (0%)	90 89	29, 39, 50, 55	0
1	E	379/400 (94%)	-0.26	2 (0%)	90 89	29, 39, 50, 61	0
1	F	380/400 (95%)	-0.18	1 (0%)	93 93	29, 39, 50, 58	0
All	All	2279/2400 (94%)	-0.19	16 (0%)	87 86	28, 39, 50, 68	0

All (16) RSRZ outliers are listed below:

Mol	Chain	Res	Type	RSRZ
1	C	337	ALA	5.2
1	D	344	ALA	4.7
1	A	89	GLY	3.4
1	B	3	THR	3.1
1	A	380	GLN	2.5
1	E	344	ALA	2.3
1	F	337	ALA	2.3
1	B	343	THR	2.3
1	D	2	THR	2.3
1	B	207	GLU	2.3
1	A	391	PRO	2.2
1	B	2	THR	2.2
1	A	343	THR	2.2
1	A	88	ARG	2.1
1	E	375	ASP	2.1
1	A	337	ALA	2.0

6.2 Non-standard residues in protein, DNA, RNA chains [i](#)

There are no non-standard protein/DNA/RNA residues in this entry.

6.3 Carbohydrates [i](#)

There are no carbohydrates in this entry.

6.4 Ligands [i](#)

In the following table, the Atoms column lists the number of modelled atoms in the group and the number defined in the chemical component dictionary. LLDF column lists the quality of electron density of the group with respect to its neighbouring residues in protein, DNA or RNA chains. The B-factors column lists the minimum, median, 95th percentile and maximum values of B factors of atoms in the group. The column labelled 'Q< 0.9' lists the number of atoms with occupancy less than 0.9.

Mol	Type	Chain	Res	Atoms	RSCC	RSR	LLDF	B-factors(Å ²)	Q<0.9
3	PG4	B	802	13/13	0.85	0.44	10.68	62,63,65,65	0
3	PG4	A	801	13/13	0.86	0.28	8.02	58,60,64,65	0
2	EPE	E	705	15/15	0.83	0.24	6.52	83,86,94,94	0
2	EPE	D	704	15/15	0.81	0.22	5.40	78,80,86,86	0
3	PG4	D	804	13/13	0.90	0.25	4.23	56,58,59,59	0
2	EPE	A	701	15/15	0.87	0.25	3.68	65,66,73,73	0
3	PG4	F	806	13/13	0.91	0.26	3.19	62,65,66,66	0
3	PG4	E	805	13/13	0.84	0.22	2.39	73,75,76,77	0
2	EPE	B	702	15/15	0.88	0.17	2.01	62,66,73,73	0
3	PG4	C	803	13/13	0.88	0.19	1.64	56,60,61,62	0
2	EPE	C	703	15/15	0.91	0.16	0.66	58,61,69,70	0

6.5 Other polymers [i](#)

There are no such residues in this entry.