



Full wwPDB X-ray Structure Validation Report ⓘ

Feb 14, 2017 – 05:49 pm GMT

PDB ID : 2HWI
Title : HCV NS5B allosteric inhibitor complex
Authors : Yao, N.
Deposited on : 2006-08-01
Resolution : 2.00 Å(reported)

This is a Full wwPDB X-ray Structure Validation Report for a publicly released PDB entry.

We welcome your comments at validation@mail.wwpdb.org

A user guide is available at

<http://wwpdb.org/validation/2016/XrayValidationReportHelp>

with specific help available everywhere you see the ⓘ symbol.

The following versions of software and data (see [references ⓘ](#)) were used in the production of this report:

MolProbity : 4.02b-467
Mogul : 1.7.2 (RC1), CSD as538be (2017)
Xtriage (Phenix) : **NOT EXECUTED**
EDS : **NOT EXECUTED**
Percentile statistics : 20161228.v01 (using entries in the PDB archive December 28th 2016)
Ideal geometry (proteins) : Engh & Huber (2001)
Ideal geometry (DNA, RNA) : Parkinson et al. (1996)
Validation Pipeline (wwPDB-VP) : recalc28949

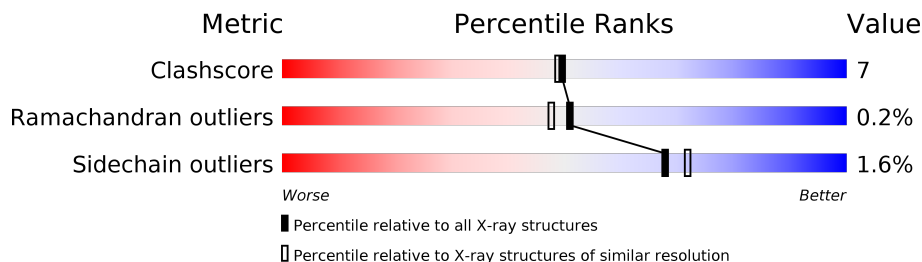
1 Overall quality at a glance

The following experimental techniques were used to determine the structure:

X-RAY DIFFRACTION

The reported resolution of this entry is 2.00 Å.

Percentile scores (ranging between 0-100) for global validation metrics of the entry are shown in the following graphic. The table shows the number of entries on which the scores are based.



Metric	Whole archive (#Entries)	Similar resolution (#Entries, resolution range(Å))
Clashscore	112137	7775 (2.00-2.00)
Ramachandran outliers	110173	7679 (2.00-2.00)
Sidechain outliers	110143	7678 (2.00-2.00)

The table below summarises the geometric issues observed across the polymeric chains and their fit to the electron density. The red, orange, yellow and green segments on the lower bar indicate the fraction of residues that contain outliers for ≥ 3 , 2, 1 and 0 types of geometric quality criteria. A grey segment represents the fraction of residues that are not modelled. The numeric value for each fraction is indicated below the corresponding segment, with a dot representing fractions $\leq 5\%$. The upper red bar (where present) indicates the fraction of residues that have poor fit to the electron density. The numeric value is given above the bar.

Note EDS was not executed.

Mol	Chain	Length	Quality of chain
1	A	576	
1	B	576	

2 Entry composition

There are 3 unique types of molecules in this entry. The entry contains 9173 atoms, of which 0 are hydrogens and 0 are deuteriums.

In the tables below, the ZeroOcc column contains the number of atoms modelled with zero occupancy, the AltConf column contains the number of residues with at least one atom in alternate conformation and the Trace column contains the number of residues modelled with at most 2 atoms.

- Molecule 1 is a protein called RNA-directed RNA polymerase (NS5B) (p68).

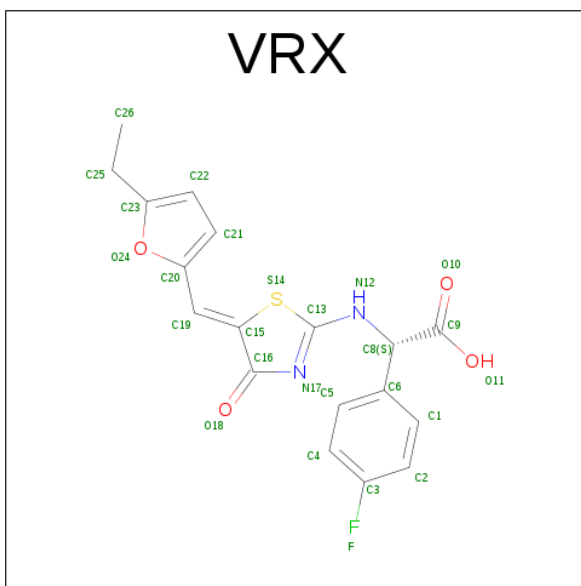
Mol	Chain	Residues	Atoms					ZeroOcc	AltConf	Trace
1	A	559	Total	C	N	O	S	0	0	0
			4352	2747	770	805	30			
1	B	561	Total	C	N	O	S	0	0	0
			4369	2756	775	808	30			

There are 22 discrepancies between the modelled and reference sequences:

Chain	Residue	Modelled	Actual	Comment	Reference
A	-5	ALA	-	CLONING ARTIFACT	UNP P26663
A	-4	SER	-	CLONING ARTIFACT	UNP P26663
A	-3	HIS	-	EXPRESSION TAG	UNP P26663
A	-2	HIS	-	EXPRESSION TAG	UNP P26663
A	-1	HIS	-	EXPRESSION TAG	UNP P26663
A	0	HIS	-	EXPRESSION TAG	UNP P26663
A	1	HIS	-	EXPRESSION TAG	UNP P26663
A	2	HIS	-	EXPRESSION TAG	UNP P26663
A	329	VAL	THR	SEE REMARK 999	UNP P26663
A	338	ALA	VAL	SEE REMARK 999	UNP P26663
A	544	GLN	ARG	SEE REMARK 999	UNP P26663
B	-5	ALA	-	CLONING ARTIFACT	UNP P26663
B	-4	SER	-	CLONING ARTIFACT	UNP P26663
B	-3	HIS	-	EXPRESSION TAG	UNP P26663
B	-2	HIS	-	EXPRESSION TAG	UNP P26663
B	-1	HIS	-	EXPRESSION TAG	UNP P26663
B	0	HIS	-	EXPRESSION TAG	UNP P26663
B	1	HIS	-	EXPRESSION TAG	UNP P26663
B	2	HIS	-	EXPRESSION TAG	UNP P26663
B	329	VAL	THR	SEE REMARK 999	UNP P26663
B	338	ALA	VAL	SEE REMARK 999	UNP P26663
B	544	GLN	ARG	SEE REMARK 999	UNP P26663

- Molecule 2 is (2S)-({(5Z)-5-[(5-ETHYL-2-FURYL)METHYLENE]-4-OXO-4,5-DIHYDRO-1,3-THIAZOL-2-YL}AMINO)(4-FLUOROPHENYL)ACETIC ACID (three-letter code:

VRX) (formula: C₁₈H₁₅FN₂O₄S).



Mol	Chain	Residues	Atoms						ZeroOcc	AltConf
2	A	1	Total	C	F	N	O	S	0	0
			26	18	1	2	4	1		
2	B	1	Total	C	F	N	O	S	0	0
			26	18	1	2	4	1		

- Molecule 3 is water.

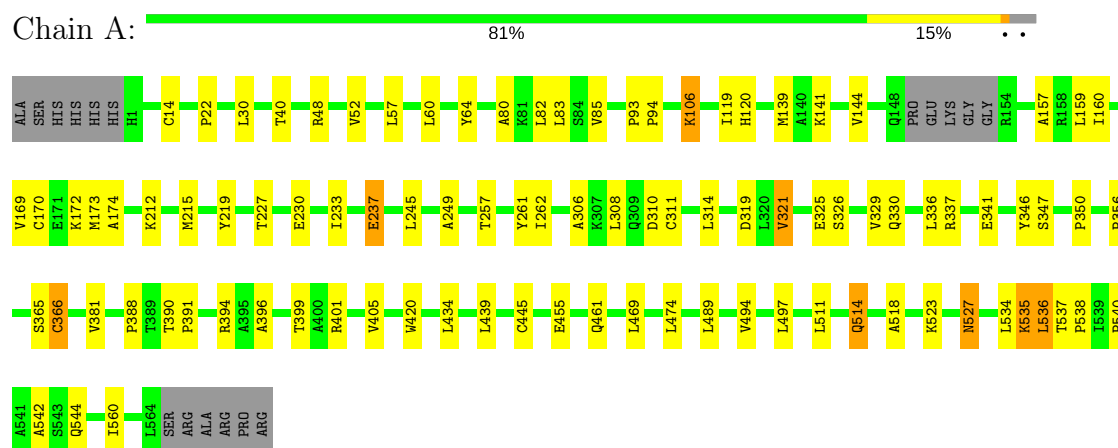
Mol	Chain	Residues	Atoms		ZeroOcc	AltConf
3	A	194	Total	O	0	0
			194	194		
3	B	206	Total	O	0	0
			206	206		

3 Residue-property plots

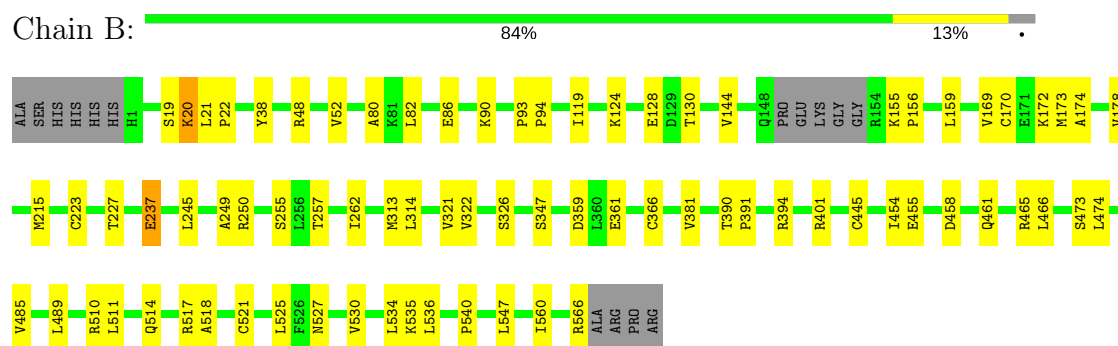
These plots are drawn for all protein, RNA and DNA chains in the entry. The first graphic for a chain summarises the proportions of the various outlier classes displayed in the second graphic. The second graphic shows the sequence view annotated by issues in geometry and electron density. Residues are color-coded according to the number of geometric quality criteria for which they contain at least one outlier: green = 0, yellow = 1, orange = 2 and red = 3 or more. A red dot above a residue indicates a poor fit to the electron density ($RSRZ > 2$). Stretches of 2 or more consecutive residues without any outlier are shown as a green connector. Residues present in the sample, but not in the model, are shown in grey.

Note EDS was not executed.

• Molecule 1: RNA-directed RNA polymerase (NS5B) (p68)



• Molecule 1: RNA-directed RNA polymerase (NS5B) (p68)



4 Data and refinement statistics

Xtrriage (Phenix) and EDS were not executed - this section is therefore incomplete.

Property	Value	Source
Space group	P 21 21 21	Depositor
Cell constants a, b, c, α , β , γ	85.00Å 106.58Å 127.20Å 90.00° 90.00° 90.00°	Depositor
Resolution (Å)	20.00 – 2.00	Depositor
% Data completeness (in resolution range)	91.5 (20.00-2.00)	Depositor
R_{merge}	0.07	Depositor
R_{sym}	(Not available)	Depositor
Refinement program	CNS	Depositor
R, R_{free}	0.223 , 0.259	Depositor
Estimated twinning fraction	No twinning to report.	Xtrriage
Total number of atoms	9173	wwPDB-VP
Average B, all atoms (Å ²)	25.0	wwPDB-VP

5 Model quality [i](#)

5.1 Standard geometry [i](#)

Bond lengths and bond angles in the following residue types are not validated in this section: VRX

The Z score for a bond length (or angle) is the number of standard deviations the observed value is removed from the expected value. A bond length (or angle) with $|Z| > 5$ is considered an outlier worth inspection. RMSZ is the root-mean-square of all Z scores of the bond lengths (or angles).

Mol	Chain	Bond lengths		Bond angles	
		RMSZ	$\# Z > 5$	RMSZ	$\# Z > 5$
1	A	0.29	0/4448	0.54	0/6037
1	B	0.30	0/4465	0.55	0/6059
All	All	0.30	0/8913	0.55	0/12096

There are no bond length outliers.

There are no bond angle outliers.

There are no chirality outliers.

There are no planarity outliers.

5.2 Too-close contacts [i](#)

In the following table, the Non-H and H(model) columns list the number of non-hydrogen atoms and hydrogen atoms in the chain respectively. The H(added) column lists the number of hydrogen atoms added and optimized by MolProbity. The Clashes column lists the number of clashes within the asymmetric unit, whereas Symm-Clashes lists symmetry related clashes.

Mol	Chain	Non-H	H(model)	H(added)	Clashes	Symm-Clashes
1	A	4352	0	4368	65	0
1	B	4369	0	4386	53	0
2	A	26	0	14	1	0
2	B	26	0	14	0	0
3	A	194	0	0	4	0
3	B	206	0	0	3	0
All	All	9173	0	8782	118	0

The all-atom clashscore is defined as the number of clashes found per 1000 atoms (including hydrogen atoms). The all-atom clashscore for this structure is 7.

All (118) close contacts within the same asymmetric unit are listed below, sorted by their clash

magnitude.

Atom-1	Atom-2	Interatomic distance (Å)	Clash overlap (Å)
1:B:82:LEU:HD13	1:B:249:ALA:HB2	1.67	0.76
1:A:141:LYS:HD3	1:A:160:ILE:HB	1.70	0.74
1:B:20:LYS:H	1:B:20:LYS:HZ2	1.38	0.71
1:B:455:GLU:HB3	3:B:800:HOH:O	1.91	0.69
1:B:22:PRO:HG2	1:B:401:ARG:HG3	1.78	0.66
1:B:52:VAL:HG12	1:B:223:CYS:SG	2.35	0.65
1:B:359:ASP:OD1	1:B:361:GLU:HG2	1.98	0.64
1:B:19:SER:H	1:B:20:LYS:HZ2	1.47	0.63
1:A:535:LYS:HD2	1:A:536:LEU:N	2.13	0.63
1:A:119:ILE:HD13	1:A:169:VAL:HG11	1.81	0.62
1:A:227:THR:HB	1:A:347:SER:O	2.02	0.60
1:B:172:LYS:HE3	1:B:560:ILE:HD13	1.84	0.60
1:A:544:GLN:HG3	3:A:672:HOH:O	2.02	0.59
1:A:336:LEU:HD12	1:A:356:PRO:HD3	1.83	0.59
1:B:458:ASP:O	1:B:461:GLN:HG2	2.03	0.59
1:A:22:PRO:HG2	1:A:401:ARG:HG3	1.85	0.58
1:B:314:LEU:HB3	1:B:321:VAL:CG1	2.33	0.58
1:A:535:LYS:NZ	1:A:536:LEU:H	2.01	0.58
1:B:20:LYS:H	1:B:20:LYS:NZ	2.01	0.58
1:B:535:LYS:O	1:B:535:LYS:HG3	2.05	0.56
1:A:523:LYS:HG3	1:A:534:LEU:HD22	1.87	0.56
1:A:535:LYS:HE2	1:A:537:THR:HG22	1.87	0.55
1:A:535:LYS:HZ2	1:A:536:LEU:H	1.52	0.55
1:A:535:LYS:C	1:A:535:LYS:HD2	2.25	0.55
1:B:445:CYS:SG	1:B:454:ILE:HD12	2.47	0.55
1:A:215:MET:HB2	1:A:326:SER:HB2	1.88	0.55
1:A:337:ARG:O	1:A:341:GLU:HG3	2.07	0.54
1:A:527:ASN:HD21	1:A:534:LEU:H	1.56	0.54
1:A:455:GLU:HB3	3:A:684:HOH:O	2.07	0.54
1:B:381:VAL:HG11	1:B:474:LEU:HD22	1.91	0.53
1:A:469:LEU:HD11	1:A:538:PRO:HA	1.91	0.53
1:B:517:ARG:HG3	1:B:517:ARG:HH21	1.74	0.53
1:A:48:ARG:HG2	1:A:159:LEU:HG	1.91	0.52
1:B:48:ARG:HG2	1:B:159:LEU:HG	1.91	0.52
1:A:230:GLU:HG3	1:A:262:ILE:HG23	1.91	0.52
1:B:21:LEU:HD12	1:B:22:PRO:HD2	1.91	0.52
1:B:527:ASN:HD21	1:B:534:LEU:H	1.56	0.52
1:B:314:LEU:HB3	1:B:321:VAL:HG13	1.91	0.52
1:A:489:LEU:HD22	1:A:494:VAL:HB	1.92	0.52
1:A:83:LEU:HB2	1:A:173:MET:HA	1.92	0.51
1:B:466:LEU:HD21	1:B:547:LEU:HD23	1.91	0.51

Continued on next page...

Continued from previous page...

Atom-1	Atom-2	Interatomic distance (Å)	Clash overlap (Å)
1:B:465:ARG:NH2	1:B:547:LEU:HD13	2.25	0.51
1:A:321:VAL:HG13	1:A:365:SER:HB3	1.94	0.50
1:B:170:CYS:HA	1:B:173:MET:HE3	1.94	0.50
1:A:381:VAL:HG11	1:A:474:LEU:HD22	1.94	0.49
1:B:119:ILE:HD13	1:B:169:VAL:HG11	1.93	0.49
1:B:510:ARG:O	1:B:514:GLN:HG2	2.13	0.49
1:B:144:VAL:HB	1:B:394:ARG:HG2	1.94	0.48
1:B:547:LEU:HD12	1:B:547:LEU:N	2.29	0.48
1:B:237:GLU:HG3	1:B:257:THR:OG1	2.14	0.47
1:A:329:VAL:HG13	1:A:330:GLN:N	2.30	0.47
1:A:434:LEU:HD23	1:A:439:LEU:HD11	1.96	0.47
1:A:60:LEU:HD13	1:A:64:TYR:CE2	2.50	0.47
1:B:381:VAL:HG11	1:B:474:LEU:CD2	2.45	0.47
1:A:511:LEU:HB3	1:A:518:ALA:O	2.14	0.47
1:A:82:LEU:HG	1:A:249:ALA:HB2	1.97	0.47
1:B:530:VAL:HB	3:B:731:HOH:O	2.14	0.46
1:B:86:GLU:O	1:B:90:LYS:HG2	2.15	0.46
1:A:94:PRO:HB3	1:A:106:LYS:NZ	2.30	0.46
1:A:82:LEU:HD23	1:A:174:ALA:HA	1.97	0.46
1:B:521:CYS:O	1:B:525:LEU:HB2	2.15	0.46
1:B:82:LEU:HD12	1:B:174:ALA:HA	1.98	0.45
1:B:215:MET:HB2	1:B:326:SER:HB2	1.98	0.45
1:A:336:LEU:HA	1:A:336:LEU:HD23	1.70	0.45
1:B:517:ARG:HG3	1:B:517:ARG:NH2	2.33	0.44
1:B:227:THR:HB	1:B:347:SER:O	2.17	0.44
1:B:178:VAL:HG23	3:B:679:HOH:O	2.17	0.44
1:A:396:ALA:O	1:A:399:THR:HB	2.17	0.44
1:B:473:SER:HB3	1:B:536:LEU:HD12	2.00	0.44
1:A:537:THR:OG1	1:A:538:PRO:HD2	2.16	0.44
1:A:319:ASP:CG	1:A:366:CYS:H	2.21	0.44
1:B:390:THR:HB	1:B:391:PRO:HD3	1.99	0.44
1:B:511:LEU:HB3	1:B:518:ALA:O	2.18	0.44
1:A:144:VAL:HB	1:A:394:ARG:HG2	1.99	0.43
1:A:48:ARG:O	1:A:52:VAL:HG22	2.18	0.43
1:A:172:LYS:HE3	1:A:560:ILE:HD13	2.00	0.43
1:A:306:ALA:HB3	1:A:308:LEU:HD13	2.00	0.43
1:A:388:PRO:HB3	1:A:420:TRP:CD2	2.53	0.43
1:A:534:LEU:N	1:A:534:LEU:HD12	2.34	0.43
1:A:93:PRO:HA	1:A:94:PRO:HD3	1.93	0.43
1:B:19:SER:H	1:B:20:LYS:NZ	2.15	0.43
1:A:40:THR:HB	1:A:157:ALA:HB2	2.01	0.43

Continued on next page...

Continued from previous page...

Atom-1	Atom-2	Interatomic distance (Å)	Clash overlap (Å)
1:A:310:ASP:HB3	1:A:325:GLU:HG2	2.00	0.43
1:A:219:TYR:OH	1:A:350:PRO:HD3	2.19	0.43
1:B:514:GLN:HB2	1:B:518:ALA:HB3	2.01	0.43
1:A:405:VAL:HG13	1:A:445:CYS:HA	2.01	0.43
1:A:80:ALA:HB3	1:A:245:LEU:CD2	2.49	0.42
1:A:445:CYS:HB2	3:A:780:HOH:O	2.19	0.42
1:B:170:CYS:HA	1:B:173:MET:CE	2.49	0.42
1:A:388:PRO:HD3	3:A:616:HOH:O	2.18	0.42
1:A:85:VAL:HG21	1:A:120:HIS:CE1	2.55	0.42
1:B:313:MET:HG2	1:B:322:VAL:HG22	2.01	0.42
1:B:130:THR:HG22	1:B:255:SER:HB2	2.01	0.42
1:A:329:VAL:HG13	1:A:330:GLN:H	1.84	0.42
1:B:48:ARG:NH2	1:B:156:PRO:HG2	2.34	0.42
1:B:485:VAL:O	1:B:489:LEU:HG	2.19	0.42
1:A:314:LEU:O	1:A:321:VAL:HG23	2.19	0.42
1:A:461:GLN:HB2	1:A:542:ALA:HB1	2.01	0.42
1:A:237:GLU:HG3	1:A:257:THR:OG1	2.19	0.42
1:B:124:LYS:O	1:B:128:GLU:HG3	2.20	0.42
1:A:346:TYR:O	1:A:347:SER:HB3	2.19	0.41
1:A:170:CYS:HA	1:A:173:MET:HE3	2.01	0.41
1:A:381:VAL:HG11	1:A:474:LEU:CD2	2.51	0.41
1:A:390:THR:HB	1:A:391:PRO:HD3	2.02	0.41
1:A:514:GLN:HB2	1:A:514:GLN:HE21	1.46	0.41
1:B:93:PRO:HA	1:B:94:PRO:HD3	1.85	0.41
1:B:458:ASP:OD1	1:B:566:ARG:NH2	2.54	0.41
1:A:233:ILE:HD13	1:A:261:TYR:O	2.21	0.41
1:A:170:CYS:HA	1:A:173:MET:CE	2.50	0.41
1:A:469:LEU:HD11	1:A:538:PRO:CA	2.50	0.41
1:A:497:LEU:HD22	2:A:600:VRX:H21	2.03	0.41
1:A:30:LEU:HD23	1:A:396:ALA:HA	2.02	0.41
1:B:80:ALA:HB3	1:B:245:LEU:CD2	2.51	0.40
1:B:257:THR:O	1:B:262:ILE:HG23	2.21	0.40
1:B:38:TYR:OH	1:B:155:LYS:HG2	2.20	0.40
1:B:250:ARG:HH11	1:B:250:ARG:HG2	1.86	0.40
1:A:139:MET:HB2	1:A:160:ILE:CG2	2.51	0.40
1:A:94:PRO:HB3	1:A:106:LYS:HZ1	1.85	0.40

There are no symmetry-related clashes.

5.3 Torsion angles

5.3.1 Protein backbone

In the following table, the Percentiles column shows the percent Ramachandran outliers of the chain as a percentile score with respect to all X-ray entries followed by that with respect to entries of similar resolution.

The Analysed column shows the number of residues for which the backbone conformation was analysed, and the total number of residues.

Mol	Chain	Analysed	Favoured	Allowed	Outliers	Percentiles	
1	A	555/576 (96%)	539 (97%)	15 (3%)	1 (0%)	51	48
1	B	557/576 (97%)	539 (97%)	17 (3%)	1 (0%)	51	48
All	All	1112/1152 (96%)	1078 (97%)	32 (3%)	2 (0%)	51	48

All (2) Ramachandran outliers are listed below:

Mol	Chain	Res	Type
1	A	540	PRO
1	B	540	PRO

5.3.2 Protein sidechains

In the following table, the Percentiles column shows the percent sidechain outliers of the chain as a percentile score with respect to all X-ray entries followed by that with respect to entries of similar resolution.

The Analysed column shows the number of residues for which the sidechain conformation was analysed, and the total number of residues.

Mol	Chain	Analysed	Rotameric	Outliers	Percentiles	
1	A	476/489 (97%)	464 (98%)	12 (2%)	53	54
1	B	478/489 (98%)	475 (99%)	3 (1%)	89	92
All	All	954/978 (98%)	939 (98%)	15 (2%)	68	72

All (15) residues with a non-rotameric sidechain are listed below:

Mol	Chain	Res	Type
1	A	14	CYS
1	A	57	LEU
1	A	106	LYS
1	A	212	LYS

Continued on next page...

Continued from previous page...

Mol	Chain	Res	Type
1	A	237	GLU
1	A	311	CYS
1	A	321	VAL
1	A	366	CYS
1	A	514	GLN
1	A	527	ASN
1	A	535	LYS
1	A	536	LEU
1	B	20	LYS
1	B	237	GLU
1	B	366	CYS

Some sidechains can be flipped to improve hydrogen bonding and reduce clashes. All (15) such sidechains are listed below:

Mol	Chain	Res	Type
1	A	49	GLN
1	A	110	ASN
1	A	117	ASN
1	A	142	ASN
1	A	273	ASN
1	A	355	GLN
1	A	514	GLN
1	A	527	ASN
1	B	49	GLN
1	B	63	HIS
1	B	110	ASN
1	B	148	GLN
1	B	309	GLN
1	B	355	GLN
1	B	527	ASN

5.3.3 RNA ⓘ

There are no RNA molecules in this entry.

5.4 Non-standard residues in protein, DNA, RNA chains ⓘ

There are no non-standard protein/DNA/RNA residues in this entry.

5.5 Carbohydrates [i](#)

There are no carbohydrates in this entry.

5.6 Ligand geometry [i](#)

2 ligands are modelled in this entry.

In the following table, the Counts columns list the number of bonds (or angles) for which Mogul statistics could be retrieved, the number of bonds (or angles) that are observed in the model and the number of bonds (or angles) that are defined in the chemical component dictionary. The Link column lists molecule types, if any, to which the group is linked. The Z score for a bond length (or angle) is the number of standard deviations the observed value is removed from the expected value. A bond length (or angle) with $|Z| > 2$ is considered an outlier worth inspection. RMSZ is the root-mean-square of all Z scores of the bond lengths (or angles).

Mol	Type	Chain	Res	Link	Bond lengths			Bond angles		
					Counts	RMSZ	# Z > 2	Counts	RMSZ	# Z > 2
2	VRX	A	600	-	22,28,28	3.89	9 (40%)	28,39,39	2.47	8 (28%)
2	VRX	B	600	-	22,28,28	3.80	10 (45%)	28,39,39	2.58	8 (28%)

In the following table, the Chirals column lists the number of chiral outliers, the number of chiral centers analysed, the number of these observed in the model and the number defined in the chemical component dictionary. Similar counts are reported in the Torsion and Rings columns. '-' means no outliers of that kind were identified.

Mol	Type	Chain	Res	Link	Chirals	Torsions	Rings
2	VRX	A	600	-	-	0/9/30/30	0/2/3/3
2	VRX	B	600	-	-	0/9/30/30	0/2/3/3

All (19) bond length outliers are listed below:

Mol	Chain	Res	Type	Atoms	Z	Observed(Å)	Ideal(Å)
2	B	600	VRX	C5-C4	2.10	1.42	1.38
2	A	600	VRX	C5-C4	2.27	1.42	1.38
2	B	600	VRX	C13-N17	2.31	1.34	1.31
2	A	600	VRX	C4-C3	2.51	1.42	1.37
2	B	600	VRX	C4-C3	2.54	1.42	1.37
2	A	600	VRX	C2-C3	2.57	1.42	1.37
2	B	600	VRX	C2-C3	2.60	1.42	1.37
2	B	600	VRX	C6-C8	2.65	1.56	1.52
2	B	600	VRX	C5-C6	2.81	1.43	1.39
2	A	600	VRX	C1-C6	2.81	1.43	1.39
2	B	600	VRX	C1-C6	2.88	1.43	1.39

Continued on next page...

Continued from previous page...

Mol	Chain	Res	Type	Atoms	Z	Observed(Å)	Ideal(Å)
2	A	600	VRX	C8-N12	2.96	1.51	1.46
2	B	600	VRX	C8-N12	3.07	1.51	1.46
2	A	600	VRX	C5-C6	3.07	1.44	1.39
2	A	600	VRX	C6-C8	3.15	1.56	1.52
2	A	600	VRX	C13-N12	5.29	1.43	1.34
2	B	600	VRX	C13-N12	5.41	1.43	1.34
2	B	600	VRX	C19-C15	14.92	1.52	1.34
2	A	600	VRX	C19-C15	15.41	1.52	1.34

All (16) bond angle outliers are listed below:

Mol	Chain	Res	Type	Atoms	Z	Observed(°)	Ideal(°)
2	B	600	VRX	C15-C16-N17	-6.54	110.36	113.60
2	A	600	VRX	C15-C16-N17	-6.52	110.38	113.60
2	B	600	VRX	C19-C15-S14	-5.51	122.05	129.26
2	A	600	VRX	C19-C15-S14	-5.03	122.67	129.26
2	B	600	VRX	N12-C13-N17	-4.57	119.67	124.14
2	A	600	VRX	N12-C13-N17	-4.33	119.91	124.14
2	A	600	VRX	C9-C8-C6	-2.68	108.83	112.89
2	B	600	VRX	C9-C8-C6	-2.64	108.89	112.89
2	B	600	VRX	C21-C22-C23	2.24	107.98	106.76
2	A	600	VRX	C21-C22-C23	2.35	108.04	106.76
2	A	600	VRX	C19-C15-C16	3.63	125.95	122.24
2	B	600	VRX	C19-C15-C16	3.92	126.25	122.24
2	A	600	VRX	C16-C15-S14	4.08	111.38	109.09
2	A	600	VRX	O18-C16-C15	4.11	124.65	122.45
2	B	600	VRX	O18-C16-C15	4.18	124.69	122.45
2	B	600	VRX	C16-C15-S14	4.68	111.71	109.09

There are no chirality outliers.

There are no torsion outliers.

There are no ring outliers.

1 monomer is involved in 1 short contact:

Mol	Chain	Res	Type	Clashes	Symm-Clashes
2	A	600	VRX	1	0

5.7 Other polymers ⓘ

There are no such residues in this entry.

5.8 Polymer linkage issues ⓘ

There are no chain breaks in this entry.

6 Fit of model and data

6.1 Protein, DNA and RNA chains

EDS was not executed - this section is therefore empty.

6.2 Non-standard residues in protein, DNA, RNA chains

EDS was not executed - this section is therefore empty.

6.3 Carbohydrates

EDS was not executed - this section is therefore empty.

6.4 Ligands

EDS was not executed - this section is therefore empty.

6.5 Other polymers

EDS was not executed - this section is therefore empty.