



Full wwPDB X-ray Structure Validation Report ⓘ

Jul 19, 2017 – 01:02 PM EDT

PDB ID : 3HXE
Title : Engineered RabGGTase in complex with a peptidomimetic inhibitor (compound 37)
Authors : Guo, Z.; Alexandrov, K.; Waldmann, H.; Goody, R.S.; Blankenfeldt, W.
Deposited on : unknown
Resolution : 1.95 Å(reported)

This is a Full wwPDB X-ray Structure Validation Report for a publicly released PDB entry.

We welcome your comments at validation@mail.wwpdb.org

A user guide is available at

<http://wwpdb.org/validation/2016/XrayValidationReportHelp>

with specific help available everywhere you see the ⓘ symbol.

The following versions of software and data (see [references ⓘ](#)) were used in the production of this report:

MolProbity	:	4.02b-467
Mogul	:	1.7.2 (RC1), CSD as538be (2017)
Xtriage (Phenix)	:	1.9-1692
EDS	:	rb-20029824
Percentile statistics	:	20161228.v01 (using entries in the PDB archive December 28th 2016)
Refmac	:	5.8.0135
CCP4	:	6.5.0
Ideal geometry (proteins)	:	Engh & Huber (2001)
Ideal geometry (DNA, RNA)	:	Parkinson et al. (1996)
Validation Pipeline (wwPDB-VP)	:	rb-20029824

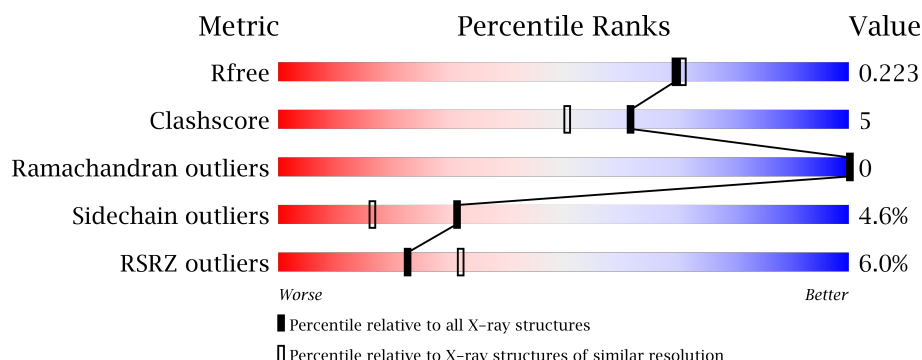
1 Overall quality at a glance

The following experimental techniques were used to determine the structure:

X-RAY DIFFRACTION

The reported resolution of this entry is 1.95 Å.

Percentile scores (ranging between 0-100) for global validation metrics of the entry are shown in the following graphic. The table shows the number of entries on which the scores are based.



Metric	Whole archive (#Entries)	Similar resolution (#Entries, resolution range(Å))
R_{free}	100719	2004 (1.96-1.96)
Clashscore	112137	2136 (1.96-1.96)
Ramachandran outliers	110173	2117 (1.96-1.96)
Sidechain outliers	110143	2117 (1.96-1.96)
RSRZ outliers	101464	2018 (1.96-1.96)

The table below summarises the geometric issues observed across the polymeric chains and their fit to the electron density. The red, orange, yellow and green segments on the lower bar indicate the fraction of residues that contain outliers for ≥ 3 , 2, 1 and 0 types of geometric quality criteria. A grey segment represents the fraction of residues that are not modelled. The numeric value for each fraction is indicated below the corresponding segment, with a dot representing fractions $\leq 5\%$. The upper red bar (where present) indicates the fraction of residues that have poor fit to the electron density. The numeric value is given above the bar.

Mol	Chain	Length	Quality of chain
1	A	331	<div> <div>8%</div> <div> <div></div> <div>81%</div> <div>10%</div> <div>•</div> <div>8%</div> </div> </div>
2	B	331	<div> <div>3%</div> <div> <div></div> <div>83%</div> <div>13%</div> <div>••</div> </div> </div>

2 Entry composition

There are 6 unique types of molecules in this entry. The entry contains 5372 atoms, of which 0 are hydrogens and 0 are deuteriums.

In the tables below, the ZeroOcc column contains the number of atoms modelled with zero occupancy, the AltConf column contains the number of residues with at least one atom in alternate conformation and the Trace column contains the number of residues modelled with at most 2 atoms.

- Molecule 1 is a protein called Geranylgeranyl transferase type-2 subunit alpha.

Mol	Chain	Residues	Atoms					ZeroOcc	AltConf	Trace
			Total	C	N	O	S			
1	A	306	2446	1566	416	451	13	0	4	0

There are 5 discrepancies between the modelled and reference sequences:

Chain	Residue	Modelled	Actual	Comment	Reference
A	0	HIS	-	EXPRESSION TAG	UNP Q08602
A	238	ALA	-	LINKER	UNP Q08602
A	239	GLY	-	LINKER	UNP Q08602
A	240	SER	-	LINKER	UNP Q08602
A	241	GLY	-	LINKER	UNP Q08602

- Molecule 2 is a protein called Geranylgeranyl transferase type-2 subunit beta.

Mol	Chain	Residues	Atoms					ZeroOcc	AltConf	Trace
			Total	C	N	O	S			
2	B	324	2521	1614	420	467	20	0	2	0

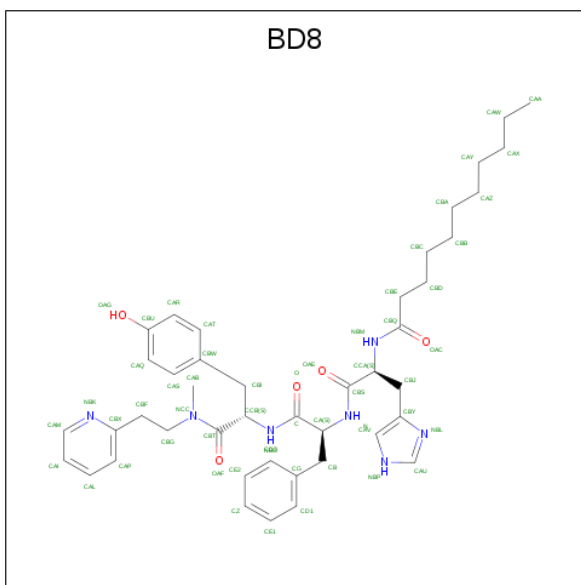
- Molecule 3 is ZINC ION (three-letter code: ZN) (formula: Zn).

Mol	Chain	Residues	Atoms		ZeroOcc	AltConf
3	B	1	Total	Zn	0	0
			1	1		

- Molecule 4 is CALCIUM ION (three-letter code: CA) (formula: Ca).

Mol	Chain	Residues	Atoms		ZeroOcc	AltConf
4	B	1	Total	Ca	0	0
			1	1		

- Molecule 5 is N-undecanoyl-L-histidyl-L-phenylalanyl-N-methyl-N-(2-pyridin-2-ylethyl)-L-tyrosinamide (three-letter code: BD8) (formula: C₄₃H₅₇N₇O₅).



Mol	Chain	Residues	Atoms				ZeroOcc	AltConf
5	B	1	Total	C	N	O	0	0
			55	43	7	5		

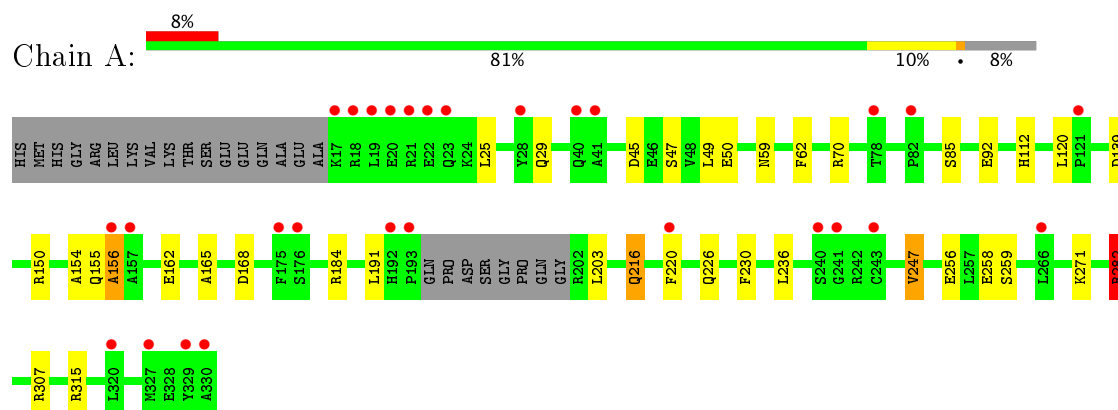
- Molecule 6 is water.

Mol	Chain	Residues	Atoms	ZeroOcc	AltConf
6	A	157	Total O 157 157	0	0
6	B	191	Total O 191 191	0	0

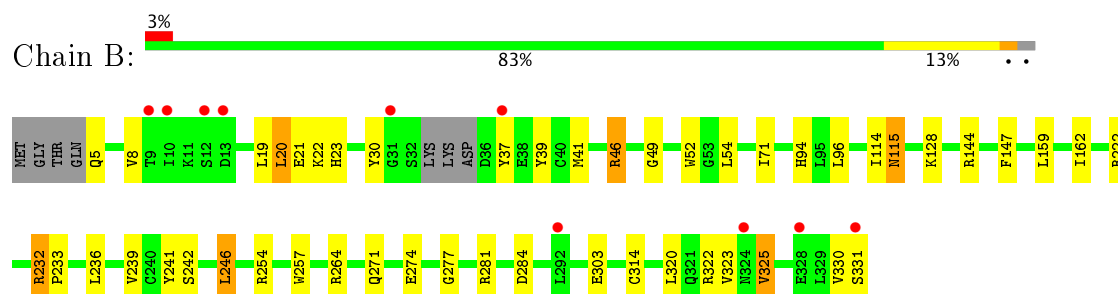
3 Residue-property plots [i](#)

These plots are drawn for all protein, RNA and DNA chains in the entry. The first graphic for a chain summarises the proportions of the various outlier classes displayed in the second graphic. The second graphic shows the sequence view annotated by issues in geometry and electron density. Residues are color-coded according to the number of geometric quality criteria for which they contain at least one outlier: green = 0, yellow = 1, orange = 2 and red = 3 or more. A red dot above a residue indicates a poor fit to the electron density ($RSRZ > 2$). Stretches of 2 or more consecutive residues without any outlier are shown as a green connector. Residues present in the sample, but not in the model, are shown in grey.

- Molecule 1: Geranylgeranyl transferase type-2 subunit alpha



- Molecule 2: Geranylgeranyl transferase type-2 subunit beta



4 Data and refinement statistics

Property	Value	Source
Space group	P 21 21 21	Depositor
Cell constants a, b, c, α , β , γ	67.12Å 90.83Å 114.73Å 90.00° 90.00° 90.00°	Depositor
Resolution (Å)	29.40 – 1.95 29.27 – 1.95	Depositor EDS
% Data completeness (in resolution range)	98.6 (29.40-1.95) 98.6 (29.27-1.95)	Depositor EDS
R_{merge}	(Not available)	Depositor
R_{sym}	0.06	Depositor
$\langle I/\sigma(I) \rangle$ ¹	4.46 (at 1.95Å)	Xtriage
Refinement program	REFMAC 5.2.0005	Depositor
R, R_{free}	0.154 , 0.215 0.165 , 0.223	Depositor DCC
R_{free} test set	2567 reflections (5.29%)	DCC
Wilson B-factor (Å ²)	27.4	Xtriage
Anisotropy	0.400	Xtriage
Bulk solvent k_{sol} (e/Å ³), B_{sol} (Å ²)	0.34 , 49.6	EDS
L-test for twinning ²	$\langle L \rangle = 0.49$, $\langle L^2 \rangle = 0.32$	Xtriage
Estimated twinning fraction	No twinning to report.	Xtriage
F_o, F_c correlation	0.96	EDS
Total number of atoms	5372	wwPDB-VP
Average B, all atoms (Å ²)	34.0	wwPDB-VP

Xtriage's analysis on translational NCS is as follows: *The largest off-origin peak in the Patterson function is 4.48% of the height of the origin peak. No significant pseudotranslation is detected.*

¹Intensities estimated from amplitudes.

²Theoretical values of $\langle |L| \rangle$, $\langle L^2 \rangle$ for acentric reflections are 0.5, 0.333 respectively for untwinned datasets, and 0.375, 0.2 for perfectly twinned datasets.

5 Model quality [i](#)

5.1 Standard geometry [i](#)

Bond lengths and bond angles in the following residue types are not validated in this section: ZN, CA, BD8

The Z score for a bond length (or angle) is the number of standard deviations the observed value is removed from the expected value. A bond length (or angle) with $|Z| > 5$ is considered an outlier worth inspection. RMSZ is the root-mean-square of all Z scores of the bond lengths (or angles).

Mol	Chain	Bond lengths		Bond angles	
		RMSZ	$\# Z > 5$	RMSZ	$\# Z > 5$
1	A	1.00	3/2517 (0.1%)	0.99	10/3424 (0.3%)
2	B	1.05	0/2586	0.93	7/3508 (0.2%)
All	All	1.03	3/5103 (0.1%)	0.96	17/6932 (0.2%)

All (3) bond length outliers are listed below:

Mol	Chain	Res	Type	Atoms	Z	Observed(Å)	Ideal(Å)
1	A	258	GLU	CG-CD	5.69	1.60	1.51
1	A	247	VAL	CB-CG2	-5.53	1.41	1.52
1	A	315	ARG	CD-NE	-5.51	1.37	1.46

All (17) bond angle outliers are listed below:

Mol	Chain	Res	Type	Atoms	Z	Observed(°)	Ideal(°)
1	A	315	ARG	NE-CZ-NH2	-14.62	112.99	120.30
1	A	282	ARG	NE-CZ-NH2	-13.32	113.64	120.30
2	B	232	ARG	NE-CZ-NH1	11.44	126.02	120.30
1	A	315	ARG	NE-CZ-NH1	11.07	125.84	120.30
1	A	307	ARG	NE-CZ-NH2	-8.17	116.22	120.30
1	A	307	ARG	NE-CZ-NH1	8.11	124.35	120.30
1	A	282	ARG	NE-CZ-NH1	7.95	124.28	120.30
1	A	150	ARG	NE-CZ-NH2	7.41	124.00	120.30
2	B	232	ARG	NE-CZ-NH2	-7.31	116.65	120.30
1	A	139	ASP	CB-CG-OD1	6.69	124.32	118.30
2	B	222	ARG	NE-CZ-NH2	-6.58	117.01	120.30
2	B	222	ARG	NE-CZ-NH1	6.15	123.37	120.30
1	A	156	ALA	N-CA-C	-6.07	94.62	111.00
2	B	46	ARG	NE-CZ-NH1	5.62	123.11	120.30
1	A	150	ARG	NE-CZ-NH1	-5.53	117.53	120.30
2	B	144	ARG	NE-CZ-NH1	5.24	122.92	120.30

Continued on next page...

Continued from previous page...

Mol	Chain	Res	Type	Atoms	Z	Observed(°)	Ideal(°)
2	B	320	LEU	CA-CB-CG	-5.18	103.39	115.30

There are no chirality outliers.

There are no planarity outliers.

5.2 Too-close contacts ⓘ

In the following table, the Non-H and H(model) columns list the number of non-hydrogen atoms and hydrogen atoms in the chain respectively. The H(added) column lists the number of hydrogen atoms added and optimized by MolProbity. The Clashes column lists the number of clashes within the asymmetric unit, whereas Symm-Clashes lists symmetry related clashes.

Mol	Chain	Non-H	H(model)	H(added)	Clashes	Symm-Clashes
1	A	2446	0	2351	18	0
2	B	2521	0	2467	33	0
3	B	1	0	0	0	0
4	B	1	0	0	0	0
5	B	55	0	56	5	0
6	A	157	0	0	4	0
6	B	191	0	0	5	0
All	All	5372	0	4874	50	0

The all-atom clashscore is defined as the number of clashes found per 1000 atoms (including hydrogen atoms). The all-atom clashscore for this structure is 5.

All (50) close contacts within the same asymmetric unit are listed below, sorted by their clash magnitude.

Atom-1	Atom-2	Interatomic distance (Å)	Clash overlap (Å)
2:B:94:HIS:HD2	2:B:96:LEU:H	1.21	0.88
1:A:154:ALA:O	1:A:156:ALA:O	1.93	0.86
1:A:282:ARG:HD2	6:A:334:HOH:O	1.78	0.82
2:B:23:HIS:HD1	2:B:277:GLY:H	1.35	0.71
1:A:45:ASP:OD2	1:A:47:SER:OG	2.08	0.71
1:A:282:ARG:CD	6:A:334:HOH:O	2.35	0.70
1:A:70:ARG:HH11	1:A:112:HIS:HD2	1.42	0.68
2:B:115:ASN:C	2:B:115:ASN:HD22	1.99	0.66
2:B:241:TYR:OH	6:B:459:HOH:O	2.15	0.63
2:B:19:LEU:H	2:B:271:GLN:HE22	1.48	0.61
1:A:59:ASN:OD1	2:B:41:MET:HE3	2.02	0.59
2:B:37:TYR:O	2:B:41:MET:HG2	2.05	0.56

Continued on next page...

Continued from previous page...

Atom-1	Atom-2	Interatomic distance (Å)	Clash overlap (Å)
2:B:39:TYR:O	2:B:46:ARG:NH2	2.38	0.56
2:B:284:ASP:OD1	6:B:460:HOH:O	2.18	0.56
1:A:155:GLN:C	1:A:156:ALA:O	2.36	0.55
1:A:92:GLU:OE2	1:A:112:HIS:HE1	1.90	0.54
2:B:264:ARG:NH1	2:B:303:GLU:OE1	2.42	0.53
2:B:49:GLY:HA2	2:B:52:TRP:CE3	2.44	0.52
1:A:59:ASN:OD1	2:B:41:MET:CE	2.58	0.51
2:B:323:VAL:HG23	2:B:325:VAL:HG13	1.92	0.51
1:A:70:ARG:HH11	1:A:112:HIS:CD2	2.28	0.50
2:B:128:LYS:NZ	6:B:516:HOH:O	2.45	0.49
1:A:226:GLN:HE21	1:A:230:PHE:HE1	1.60	0.49
1:A:220:PHE:CZ	1:A:259:SER:HB3	2.48	0.48
2:B:325:VAL:O	2:B:325:VAL:CG2	2.61	0.48
1:A:165:ALA:HA	1:A:168[B]:ASP:OD2	2.14	0.47
2:B:330:VAL:O	2:B:331:SER:HB3	2.15	0.47
5:B:334:BD8:CD1	5:B:334:BD8:C	2.93	0.47
2:B:94:HIS:CD2	2:B:96:LEU:H	2.14	0.46
2:B:242:SER:O	2:B:246:LEU:HB2	2.14	0.46
2:B:94:HIS:HE1	6:B:351:HOH:O	1.98	0.45
2:B:314:CYS:CB	5:B:334:BD8:HAI	2.47	0.44
2:B:254:ARG:HD2	2:B:257:TRP:CZ2	2.53	0.44
2:B:22:LYS:HE2	2:B:274:GLU:O	2.18	0.44
2:B:8:VAL:HG11	2:B:281:ARG:HD2	2.00	0.43
2:B:232:ARG:HB2	2:B:233:PRO:HD2	1.99	0.43
1:A:29:GLN:HG2	6:A:352:HOH:O	2.18	0.43
1:A:216:GLN:HE21	1:A:256:GLU:HG2	1.84	0.42
2:B:314:CYS:HB3	5:B:334:BD8:HAI	2.01	0.42
1:A:216:GLN:NE2	6:A:436:HOH:O	2.41	0.42
2:B:330:VAL:O	2:B:331:SER:CB	2.68	0.42
1:A:168[B]:ASP:OD1	1:A:184:ARG:NH1	2.52	0.41
2:B:232:ARG:HB2	2:B:233:PRO:CD	2.50	0.41
2:B:30:TYR:CE2	5:B:334:BD8:HAAB	2.55	0.41
2:B:147:PHE:HE2	5:B:334:BD8:HAP	1.86	0.41
1:A:154:ALA:C	1:A:156:ALA:O	2.57	0.41
2:B:114:ILE:HG21	2:B:114:ILE:HD13	1.89	0.41
2:B:54:LEU:HD11	2:B:71:ILE:HD13	2.03	0.40
2:B:20:LEU:HD12	2:B:20:LEU:HA	1.87	0.40
2:B:322:ARG:HD2	6:B:396:HOH:O	2.21	0.40

There are no symmetry-related clashes.

5.3 Torsion angles

5.3.1 Protein backbone

In the following table, the Percentiles column shows the percent Ramachandran outliers of the chain as a percentile score with respect to all X-ray entries followed by that with respect to entries of similar resolution.

The Analysed column shows the number of residues for which the backbone conformation was analysed, and the total number of residues.

Mol	Chain	Analysed	Favoured	Allowed	Outliers	Percentiles	
1	A	306/331 (92%)	300 (98%)	6 (2%)	0	100	100
2	B	322/331 (97%)	318 (99%)	4 (1%)	0	100	100
All	All	628/662 (95%)	618 (98%)	10 (2%)	0	100	100

There are no Ramachandran outliers to report.

5.3.2 Protein sidechains

In the following table, the Percentiles column shows the percent sidechain outliers of the chain as a percentile score with respect to all X-ray entries followed by that with respect to entries of similar resolution.

The Analysed column shows the number of residues for which the sidechain conformation was analysed, and the total number of residues.

Mol	Chain	Analysed	Rotameric	Outliers	Percentiles	
1	A	257/293 (88%)	243 (95%)	14 (5%)	26	12
2	B	275/284 (97%)	265 (96%)	10 (4%)	40	26
All	All	532/577 (92%)	508 (96%)	24 (4%)	31	17

All (24) residues with a non-rotameric sidechain are listed below:

Mol	Chain	Res	Type
1	A	25	LEU
1	A	49	LEU
1	A	50	GLU
1	A	62	PHE
1	A	85	SER
1	A	120	LEU
1	A	162	GLU
1	A	191	LEU

Continued on next page...

Continued from previous page...

Mol	Chain	Res	Type
1	A	203	LEU
1	A	216	GLN
1	A	236	LEU
1	A	247	VAL
1	A	271	LYS
1	A	282	ARG
2	B	5	GLN
2	B	20	LEU
2	B	21	GLU
2	B	115	ASN
2	B	159	LEU
2	B	162	ILE
2	B	236	LEU
2	B	239	VAL
2	B	246	LEU
2	B	325	VAL

Some sidechains can be flipped to improve hydrogen bonding and reduce clashes. All (10) such sidechains are listed below:

Mol	Chain	Res	Type
1	A	54	GLN
1	A	111	HIS
1	A	112	HIS
1	A	177	ASN
1	A	217	ASN
1	A	226	GLN
1	A	264	GLN
2	B	94	HIS
2	B	115	ASN
2	B	271	GLN

5.3.3 RNA ⓘ

There are no RNA molecules in this entry.

5.4 Non-standard residues in protein, DNA, RNA chains ⓘ

There are no non-standard protein/DNA/RNA residues in this entry.

5.5 Carbohydrates [i](#)

There are no carbohydrates in this entry.

5.6 Ligand geometry [i](#)

Of 3 ligands modelled in this entry, 2 are monoatomic - leaving 1 for Mogul analysis.

In the following table, the Counts columns list the number of bonds (or angles) for which Mogul statistics could be retrieved, the number of bonds (or angles) that are observed in the model and the number of bonds (or angles) that are defined in the chemical component dictionary. The Link column lists molecule types, if any, to which the group is linked. The Z score for a bond length (or angle) is the number of standard deviations the observed value is removed from the expected value. A bond length (or angle) with $|Z| > 2$ is considered an outlier worth inspection. RMSZ is the root-mean-square of all Z scores of the bond lengths (or angles).

Mol	Type	Chain	Res	Link	Bond lengths			Bond angles		
					Counts	RMSZ	# $ Z > 2$	Counts	RMSZ	# $ Z > 2$
5	BD8	B	334	-	54,58,58	0.91	0	67,74,74	1.68	15 (22%)

In the following table, the Chirals column lists the number of chiral outliers, the number of chiral centers analysed, the number of these observed in the model and the number defined in the chemical component dictionary. Similar counts are reported in the Torsion and Rings columns. '-' means no outliers of that kind were identified.

Mol	Type	Chain	Res	Link	Chirals	Torsions	Rings
5	BD8	B	334	-	-	0/55/55/55	0/4/4/4

There are no bond length outliers.

All (15) bond angle outliers are listed below:

Mol	Chain	Res	Type	Atoms	Z	Observed(°)	Ideal(°)
5	B	334	BD8	CBE-CBQ-NBM	-3.77	109.19	115.82
5	B	334	BD8	CB-CA-N	-3.52	103.34	110.80
5	B	334	BD8	CAR-CAT-CBW	-3.31	116.44	121.02
5	B	334	BD8	CBJ-CCA-CBS	-3.07	101.97	110.28
5	B	334	BD8	CBG-CBF-CBX	-2.95	106.44	111.72
5	B	334	BD8	CE1-CD1-CG	-2.11	117.42	120.64
5	B	334	BD8	CAI-CAM-NBK	-2.11	119.93	123.43
5	B	334	BD8	CBC-CBD-CBE	-2.02	105.83	113.24
5	B	334	BD8	CBI-CCB-NBO	2.12	115.29	110.80
5	B	334	BD8	CBI-CCB-CBT	2.13	114.40	109.89
5	B	334	BD8	CAV-NBP-CAU	2.54	109.75	105.78
5	B	334	BD8	CD2-CG-CD1	3.08	123.04	118.16

Continued on next page...

Continued from previous page...

Mol	Chain	Res	Type	Atoms	Z	Observed(°)	Ideal(°)
5	B	334	BD8	OAC-CBQ-NBM	3.32	128.71	122.97
5	B	334	BD8	CAT-CBW-CAS	3.48	123.68	118.16
5	B	334	BD8	CAM-NBK-CBX	3.92	122.69	117.40

There are no chirality outliers.

There are no torsion outliers.

There are no ring outliers.

1 monomer is involved in 5 short contacts:

Mol	Chain	Res	Type	Clashes	Symm-Clashes
5	B	334	BD8	5	0

5.7 Other polymers [i](#)

There are no such residues in this entry.

5.8 Polymer linkage issues [i](#)

There are no chain breaks in this entry.

6 Fit of model and data

6.1 Protein, DNA and RNA chains

In the following table, the column labelled ‘#RSRZ> 2’ contains the number (and percentage) of RSRZ outliers, followed by percent RSRZ outliers for the chain as percentile scores relative to all X-ray entries and entries of similar resolution. The OWAB column contains the minimum, median, 95th percentile and maximum values of the occupancy-weighted average B-factor per residue. The column labelled ‘Q< 0.9’ lists the number of (and percentage) of residues with an average occupancy less than 0.9.

Mol	Chain	Analysed	<RSRZ>	#RSRZ>2	OWAB(Å ²)	Q<0.9
1	A	306/331 (92%)	0.25	28 (9%) 10 16	19, 35, 67, 101	0
2	B	324/331 (97%)	-0.09	10 (3%) 49 60	15, 26, 50, 87	1 (0%)
All	All	630/662 (95%)	0.07	38 (6%) 23 32	15, 31, 60, 101	1 (0%)

All (38) RSRZ outliers are listed below:

Mol	Chain	Res	Type	RSRZ
1	A	19	LEU	7.7
2	B	331	SER	6.2
1	A	17	LYS	4.4
1	A	330	ALA	4.3
1	A	240	SER	4.0
1	A	327	MET	4.0
1	A	241	GLY	4.0
1	A	18	ARG	3.9
1	A	193	PRO	3.7
2	B	10	ILE	3.4
1	A	243	CYS	3.4
1	A	40	GLN	3.2
2	B	12	SER	3.0
1	A	121	PRO	2.9
2	B	31	GLY	2.8
1	A	266	LEU	2.7
1	A	192	HIS	2.6
2	B	324	ASN	2.6
1	A	329	TYR	2.6
2	B	328	GLU	2.6
1	A	21	ARG	2.6
1	A	176	SER	2.5
1	A	156	ALA	2.5
1	A	28	TYR	2.4

Continued on next page...

Continued from previous page...

Mol	Chain	Res	Type	RSRZ
1	A	22	GLU	2.4
1	A	157	ALA	2.4
1	A	23	GLN	2.4
1	A	41	ALA	2.3
1	A	320	LEU	2.3
1	A	220	PHE	2.3
1	A	78	THR	2.3
1	A	175	PHE	2.2
1	A	20	GLU	2.2
2	B	9	THR	2.2
2	B	292	LEU	2.1
2	B	37	TYR	2.0
1	A	82	PRO	2.0
2	B	13	ASP	2.0

6.2 Non-standard residues in protein, DNA, RNA chains [i](#)

There are no non-standard protein/DNA/RNA residues in this entry.

6.3 Carbohydrates [i](#)

There are no carbohydrates in this entry.

6.4 Ligands [i](#)

In the following table, the Atoms column lists the number of modelled atoms in the group and the number defined in the chemical component dictionary. LLDF column lists the quality of electron density of the group with respect to its neighbouring residues in protein, DNA or RNA chains. The B-factors column lists the minimum, median, 95th percentile and maximum values of B factors of atoms in the group. The column labelled 'Q< 0.9' lists the number of atoms with occupancy less than 0.9.

Mol	Type	Chain	Res	Atoms	RSCC	RSR	LLDF	B-factors(Å ²)	Q<0.9
5	BD8	B	334	55/55	0.92	0.17	1.96	36,52,82,85	0
4	CA	B	333	1/1	0.99	0.11	1.77	36,36,36,36	0
3	ZN	B	332	1/1	1.00	0.06	-	25,25,25,25	0

6.5 Other polymers [i](#)

There are no such residues in this entry.