



# Full wwPDB X-ray Structure Validation Report ⓘ

Feb 13, 2017 – 02:11 pm GMT

PDB ID : 5HYR  
Title : Estrogen Receptor Alpha Ligand Binding Domain Y537S Mutant in Complex with Stapled Peptide SRC2-SP2 and Estradiol  
Authors : Fanning, S.W.; Speltz, T.E.; Mayne, C.G.; Tajkhorshid, E.; Greene, G.L.; Moore, T.W.  
Deposited on : 2016-02-01  
Resolution : 2.27 Å(reported)

This is a Full wwPDB X-ray Structure Validation Report for a publicly released PDB entry.

We welcome your comments at [validation@mail.wwpdb.org](mailto:validation@mail.wwpdb.org)

A user guide is available at

<http://wwpdb.org/validation/2016/XrayValidationReportHelp>

with specific help available everywhere you see the ⓘ symbol.

---

The following versions of software and data (see [references ⓘ](#)) were used in the production of this report:

MolProbity : 4.02b-467  
Mogul : 1.7.2 (RC1), CSD as538be (2017)  
Xtriage (Phenix) : 1.9-1692  
EDS : trunk28620  
Percentile statistics : 20161228.v01 (using entries in the PDB archive December 28th 2016)  
Refmac : 5.8.0135  
CCP4 : 6.5.0  
Ideal geometry (proteins) : Engh & Huber (2001)  
Ideal geometry (DNA, RNA) : Parkinson et al. (1996)  
Validation Pipeline (wwPDB-VP) : recalc28949

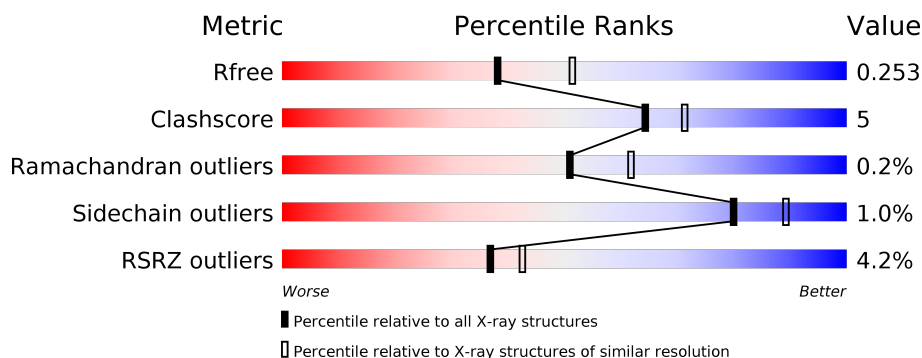
# 1 Overall quality at a glance

The following experimental techniques were used to determine the structure:

## *X-RAY DIFFRACTION*

The reported resolution of this entry is 2.27 Å.

Percentile scores (ranging between 0-100) for global validation metrics of the entry are shown in the following graphic. The table shows the number of entries on which the scores are based.



Metric	Whole archive (#Entries)	Similar resolution (#Entries, resolution range(Å))
$R_{free}$	100719	5609 (2.30-2.26)
Clashscore	112137	6364 (2.30-2.26)
Ramachandran outliers	110173	6281 (2.30-2.26)
Sidechain outliers	110143	6281 (2.30-2.26)
RSRZ outliers	101464	5639 (2.30-2.26)

The table below summarises the geometric issues observed across the polymeric chains and their fit to the electron density. The red, orange, yellow and green segments on the lower bar indicate the fraction of residues that contain outliers for  $\geq 3$ , 2, 1 and 0 types of geometric quality criteria. A grey segment represents the fraction of residues that are not modelled. The numeric value for each fraction is indicated below the corresponding segment, with a dot representing fractions  $\leq 5\%$ . The upper red bar (where present) indicates the fraction of residues that have poor fit to the electron density. The numeric value is given above the bar.

Mol	Chain	Length	Quality of chain
1	A	258	<div> <div>2%</div> <div> <div></div> <div>80%</div> <div>9%</div> <div>10%</div> </div> </div>
1	B	258	<div> <div>4%</div> <div> <div></div> <div>80%</div> <div>6%</div> <div>14%</div> </div> </div>
2	F	13	<div> <div>8%</div> <div> <div></div> <div>54%</div> <div>23%</div> <div>23%</div> </div> </div>
2	G	13	<div> <div>23%</div> <div> <div></div> <div>46%</div> <div>23%</div> <div>31%</div> </div> </div>

The following table lists non-polymeric compounds, carbohydrate monomers and non-standard residues in protein, DNA, RNA chains that are outliers for geometric or electron-density-fit crite-

ria:

Mol	Type	Chain	Res	Chirality	Geometry	Clashes	Electron density
4	GOL	A	602	-	-	X	X

## 2 Entry composition

There are 5 unique types of molecules in this entry. The entry contains 3998 atoms, of which 16 are hydrogens and 0 are deuteriums.

In the tables below, the ZeroOcc column contains the number of atoms modelled with zero occupancy, the AltConf column contains the number of residues with at least one atom in alternate conformation and the Trace column contains the number of residues modelled with at most 2 atoms.

- Molecule 1 is a protein called Estrogen receptor.

Mol	Chain	Residues	Atoms					ZeroOcc	AltConf	Trace
1	A	231	Total	C	N	O	S	0	3	0
			1822	1167	309	326	20			
1	B	223	Total	C	N	O	S	0	2	0
			1746	1115	303	309	19			

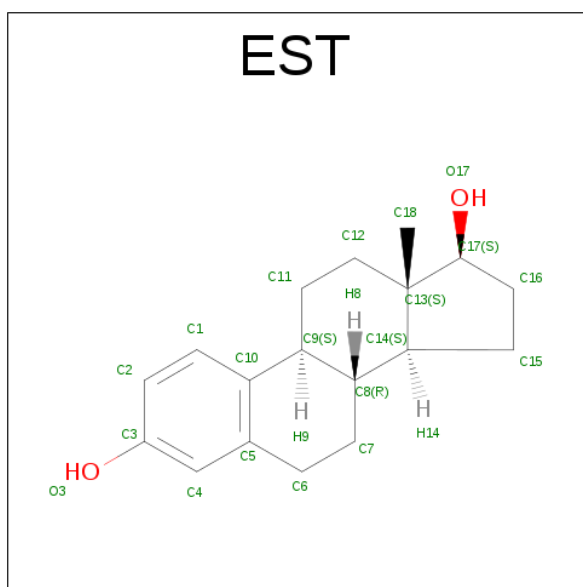
There are 2 discrepancies between the modelled and reference sequences:

Chain	Residue	Modelled	Actual	Comment	Reference
A	537	SER	TYR	engineered mutation	UNP P03372
B	537	SER	TYR	engineered mutation	UNP P03372

- Molecule 2 is a protein called Stapled Peptide SRC2-SP2.

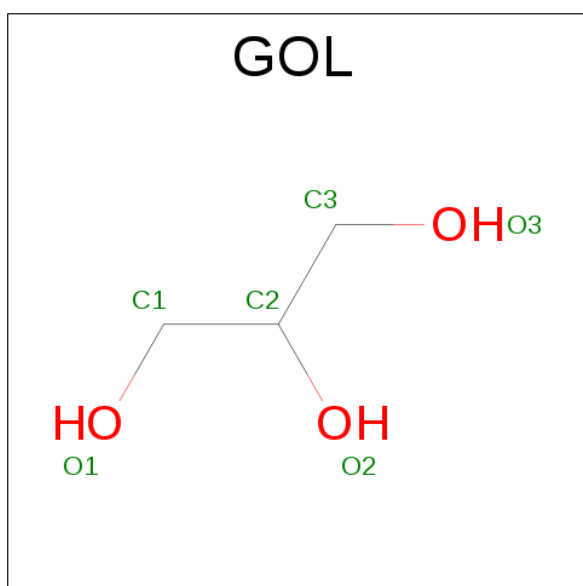
Mol	Chain	Residues	Atoms				ZeroOcc	AltConf	Trace
2	F	13	Total	C	N	O	0	0	1
			102	65	21	16			
2	G	13	Total	C	N	O	0	0	1
			102	65	21	16			

- Molecule 3 is ESTRADIOL (three-letter code: EST) (formula: C<sub>18</sub>H<sub>24</sub>O<sub>2</sub>).



Mol	Chain	Residues	Atoms			ZeroOcc	AltConf
3	A	1	Total	C	O	0	0
			20	18	2		
3	B	1	Total	C	O	0	0
			20	18	2		

- Molecule 4 is GLYCEROL (three-letter code: GOL) (formula:  $C_3H_8O_3$ ).



Mol	Chain	Residues	Atoms				ZeroOcc	AltConf
4	A	1	Total	C	H	O	0	0
			14	3	8	3		
4	B	1	Total	C	H	O	0	0
			14	3	8	3		

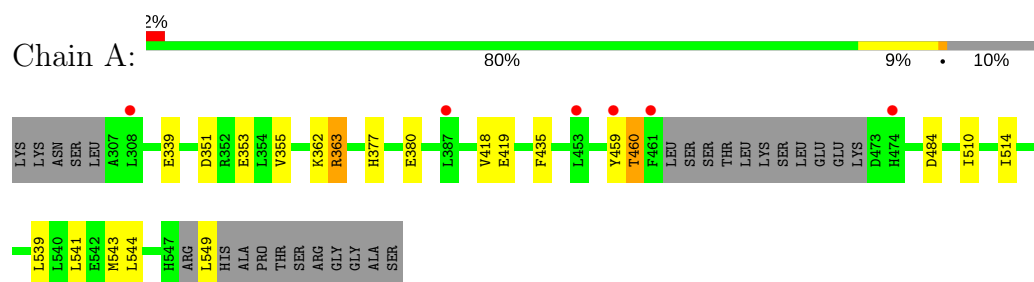
- Molecule 5 is water.

Mol	Chain	Residues	Atoms		ZeroOcc	AltConf
5	A	88	Total 88	O 88	0	0
5	B	64	Total 64	O 64	0	0
5	F	6	Total 6	O 6	0	0

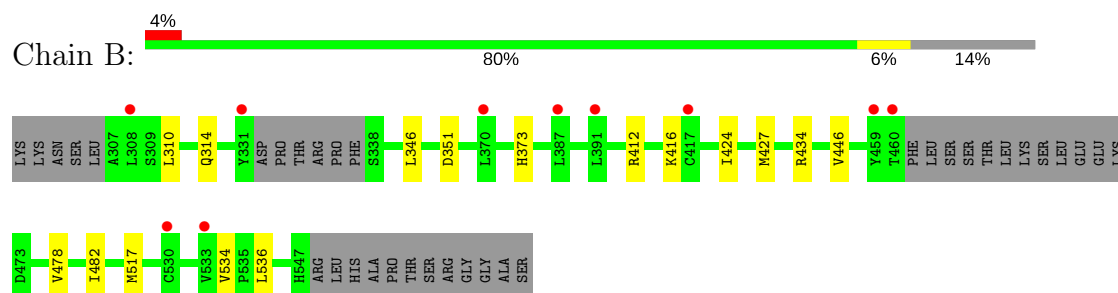
### 3 Residue-property plots [i](#)

These plots are drawn for all protein, RNA and DNA chains in the entry. The first graphic for a chain summarises the proportions of the various outlier classes displayed in the second graphic. The second graphic shows the sequence view annotated by issues in geometry and electron density. Residues are color-coded according to the number of geometric quality criteria for which they contain at least one outlier: green = 0, yellow = 1, orange = 2 and red = 3 or more. A red dot above a residue indicates a poor fit to the electron density ( $RSRZ > 2$ ). Stretches of 2 or more consecutive residues without any outlier are shown as a green connector. Residues present in the sample, but not in the model, are shown in grey.

#### • Molecule 1: Estrogen receptor



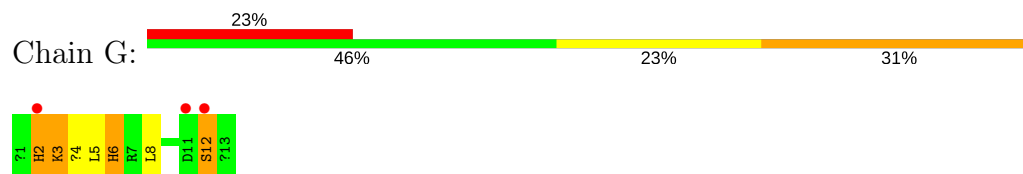
#### • Molecule 1: Estrogen receptor



#### • Molecule 2: Stapled Peptide SRC2-SP2



#### • Molecule 2: Stapled Peptide SRC2-SP2



## 4 Data and refinement statistics

Property	Value	Source
Space group	P 1 21 1	Depositor
Cell constants a, b, c, $\alpha$ , $\beta$ , $\gamma$	55.86Å 84.83Å 58.15Å 90.00° 108.85° 90.00°	Depositor
Resolution (Å)	23.63 – 2.27 23.63 – 2.27	Depositor EDS
% Data completeness (in resolution range)	88.9 (23.63-2.27) 88.9 (23.63-2.27)	Depositor EDS
$R_{merge}$	0.09	Depositor
$R_{sym}$	(Not available)	Depositor
$\langle I/\sigma(I) \rangle$ <sup>1</sup>	2.12 (at 2.26Å)	Xtriage
Refinement program	PHENIX (phenix.refine: 1.9_1692)	Depositor
R, $R_{free}$	0.202 , 0.252 0.203 , 0.253	Depositor DCC
$R_{free}$ test set	1081 reflections (5.12%)	DCC
Wilson B-factor (Å <sup>2</sup> )	31.4	Xtriage
Anisotropy	0.076	Xtriage
Bulk solvent $k_{sol}$ (e/Å <sup>3</sup> ), $B_{sol}$ (Å <sup>2</sup> )	0.37 , 39.7	EDS
L-test for twinning <sup>2</sup>	$\langle  L  \rangle = 0.50$ , $\langle L^2 \rangle = 0.33$	Xtriage
Estimated twinning fraction	0.023 for l,-k,h	Xtriage
$F_o, F_c$ correlation	0.94	EDS
Total number of atoms	3998	wwPDB-VP
Average B, all atoms (Å <sup>2</sup> )	34.0	wwPDB-VP

Xtriage's analysis on translational NCS is as follows: *The largest off-origin peak in the Patterson function is 7.28% of the height of the origin peak. No significant pseudotranslation is detected.*

<sup>1</sup>Intensities estimated from amplitudes.

<sup>2</sup>Theoretical values of  $\langle |L| \rangle$ ,  $\langle L^2 \rangle$  for acentric reflections are 0.5, 0.333 respectively for untwinned datasets, and 0.375, 0.2 for perfectly twinned datasets.



## 5 Model quality

### 5.1 Standard geometry

Bond lengths and bond angles in the following residue types are not validated in this section: GOL, EST, ACE, NH2, 66D, MK8

The Z score for a bond length (or angle) is the number of standard deviations the observed value is removed from the expected value. A bond length (or angle) with  $|Z| > 5$  is considered an outlier worth inspection. RMSZ is the root-mean-square of all Z scores of the bond lengths (or angles).

Mol	Chain	Bond lengths		Bond angles	
		RMSZ	$\# Z  > 5$	RMSZ	$\# Z  > 5$
1	A	0.44	2/1858 (0.1%)	0.65	2/2516 (0.1%)
1	B	0.33	0/1776	0.58	0/2402
2	F	1.50	2/79 (2.5%)	1.81	4/101 (4.0%)
2	G	1.75	3/79 (3.8%)	2.10	3/101 (3.0%)
All	All	0.51	7/3792 (0.2%)	0.72	9/5120 (0.2%)

Chiral center outliers are detected by calculating the chiral volume of a chiral center and verifying if the center is modelled as a planar moiety or with the opposite hand. A planarity outlier is detected by checking planarity of atoms in a peptide group, atoms in a mainchain group or atoms of a sidechain that are expected to be planar.

Mol	Chain	#Chirality outliers	#Planarity outliers
2	F	0	1

All (7) bond length outliers are listed below:

Mol	Chain	Res	Type	Atoms	Z	Observed(Å)	Ideal(Å)
1	A	353	GLU	CD-OE1	8.14	1.34	1.25
1	A	353	GLU	CG-CD	6.96	1.62	1.51
2	G	12	SER	C-O	6.74	1.36	1.23
2	F	12	SER	C-O	6.55	1.35	1.23
2	G	5	LEU	CA-C	-6.45	1.36	1.52
2	G	6	HIS	CA-C	-5.39	1.39	1.52
2	F	5	LEU	CA-C	-5.37	1.39	1.52

All (9) bond angle outliers are listed below:

Mol	Chain	Res	Type	Atoms	Z	Observed(°)	Ideal(°)
2	G	6	HIS	N-CA-CB	-7.02	97.96	110.60
2	F	3	LYS	CB-CA-C	-6.14	98.12	110.40

*Continued on next page...*

*Continued from previous page...*

Mol	Chain	Res	Type	Atoms	Z	Observed(°)	Ideal(°)
2	F	2	HIS	CA-CB-CG	-6.07	103.28	113.60
2	G	3	LYS	CB-CA-C	-5.99	98.41	110.40
2	G	2	HIS	CA-CB-CG	-5.91	103.56	113.60
2	F	3	LYS	N-CA-CB	-5.76	100.23	110.60
2	F	11	ASP	CB-CG-OD1	-5.22	113.60	118.30
1	A	353	GLU	CG-CD-OE1	5.13	128.56	118.30
1	A	460	THR	N-CA-C	-5.05	97.37	111.00

There are no chirality outliers.

All (1) planarity outliers are listed below:

Mol	Chain	Res	Type	Group
2	F	3	LYS	Mainchain

## 5.2 Too-close contacts ⓘ

In the following table, the Non-H and H(model) columns list the number of non-hydrogen atoms and hydrogen atoms in the chain respectively. The H(added) column lists the number of hydrogen atoms added and optimized by MolProbity. The Clashes column lists the number of clashes within the asymmetric unit, whereas Symm-Clashes lists symmetry related clashes.

Mol	Chain	Non-H	H(model)	H(added)	Clashes	Symm-Clashes
1	A	1822	0	1842	22	0
1	B	1746	0	1761	12	0
2	F	102	0	91	2	0
2	G	102	0	91	4	0
3	A	20	0	23	0	0
3	B	20	0	23	0	0
4	A	6	8	8	4	0
4	B	6	8	8	1	0
5	A	88	0	0	3	1
5	B	64	0	0	2	1
5	F	6	0	0	1	0
All	All	3982	16	3847	37	1

The all-atom clashscore is defined as the number of clashes found per 1000 atoms (including hydrogen atoms). The all-atom clashscore for this structure is 5.

All (37) close contacts within the same asymmetric unit are listed below, sorted by their clash magnitude.

Atom-1	Atom-2	Interatomic distance (Å)	Clash overlap (Å)
1:A:363:ARG:HG2	1:A:363:ARG:HH21	1.21	1.04
2:F:12:SER:O	5:F:101:HOH:O	1.84	0.93
1:A:362:LYS:HZ1	2:F:13:NH2:N	1.77	0.81
1:A:363:ARG:HG2	1:A:363:ARG:NH2	1.97	0.69
1:A:459:TYR:OH	1:B:434:ARG:NE	2.28	0.67
1:B:373:HIS:O	5:B:701:HOH:O	2.14	0.66
1:A:380:GLU:OE1	5:A:701:HOH:O	2.15	0.64
2:G:3:LYS:O	2:G:6:HIS:HB3	1.98	0.63
1:A:377:HIS:CE1	1:A:460:THR:HG21	2.36	0.61
1:B:310:LEU:HD22	1:B:314:GLN:HB3	1.85	0.59
1:B:351:ASP:OD1	4:B:602:GOL:H11	2.04	0.58
1:A:351:ASP:OD2	4:A:602:GOL:H11	2.04	0.57
1:A:419:GLU:OE1	1:A:531:LYS:NZ	2.37	0.57
1:A:484:ASP:OD2	5:A:702:HOH:O	2.18	0.55
1:B:446:VAL:O	5:B:702:HOH:O	2.18	0.55
2:G:4:66D:CB2	2:G:4:66D:CD	2.84	0.54
1:A:339:GLU:HG3	1:A:418:VAL:HA	1.90	0.53
1:A:522:MET:HG3	1:A:549:LEU:HD11	1.92	0.51
1:B:534:VAL:HG13	1:B:536:LEU:HD21	1.93	0.50
1:A:377:HIS:NE2	1:A:460:THR:HB	2.27	0.49
1:A:362:LYS:O	5:A:703:HOH:O	2.19	0.49
1:A:355:VAL:HG21	4:A:602:GOL:H12	1.97	0.47
1:A:435:PHE:HE1	1:A:510:ILE:HG21	1.80	0.47
1:A:460:THR:HG22	1:A:460:THR:O	2.16	0.45
1:A:355:VAL:CG2	4:A:602:GOL:H12	2.47	0.44
1:A:459:TYR:CE1	1:B:434:ARG:HD3	2.53	0.44
1:B:346:LEU:HD23	1:B:346:LEU:HA	1.76	0.43
1:A:510:ILE:HG22	1:A:514:ILE:HD12	2.01	0.42
1:A:351:ASP:OD1	4:A:602:GOL:H31	2.20	0.42
1:A:526:TYR:HA	1:A:544:LEU:HD21	2.02	0.42
2:G:8:MK8:HGA	2:G:8:MK8:HB1	1.83	0.42
1:B:478:VAL:O	1:B:482:ILE:HG13	2.19	0.41
2:G:4:66D:O	2:G:8:MK8:HG	2.20	0.41
1:A:539:LEU:O	1:A:543:MET:HG2	2.19	0.41
1:B:412:ARG:NH2	1:B:416:LYS:HE3	2.35	0.41
1:B:427:MET:HB3	1:B:517:MET:SD	2.61	0.40
1:B:424:ILE:HA	1:B:427:MET:CE	2.51	0.40

All (1) symmetry-related close contacts are listed below. The label for Atom-2 includes the symmetry operator and encoded unit-cell translations to be applied.

Atom-1	Atom-2	Interatomic distance (Å)	Clash overlap (Å)
5:A:760:HOH:O	5:B:730:HOH:O[1_655]	2.10	0.10

## 5.3 Torsion angles [i](#)

### 5.3.1 Protein backbone [i](#)

In the following table, the Percentiles column shows the percent Ramachandran outliers of the chain as a percentile score with respect to all X-ray entries followed by that with respect to entries of similar resolution.

The Analysed column shows the number of residues for which the backbone conformation was analysed, and the total number of residues.

Mol	Chain	Analysed	Favoured	Allowed	Outliers	Percentiles	
1	A	229/258 (89%)	226 (99%)	3 (1%)	0	100	100
1	B	219/258 (85%)	217 (99%)	2 (1%)	0	100	100
2	F	9/13 (69%)	8 (89%)	0	1 (11%)	0	0
2	G	9/13 (69%)	6 (67%)	3 (33%)	0	100	100
All	All	466/542 (86%)	457 (98%)	8 (2%)	1 (0%)	51	62

All (1) Ramachandran outliers are listed below:

Mol	Chain	Res	Type
2	F	11	ASP

### 5.3.2 Protein sidechains [i](#)

In the following table, the Percentiles column shows the percent sidechain outliers of the chain as a percentile score with respect to all X-ray entries followed by that with respect to entries of similar resolution.

The Analysed column shows the number of residues for which the sidechain conformation was analysed, and the total number of residues.

Mol	Chain	Analysed	Rotameric	Outliers	Percentiles	
1	A	203/230 (88%)	201 (99%)	2 (1%)	80	89
1	B	191/230 (83%)	191 (100%)	0	100	100
2	F	9/9 (100%)	9 (100%)	0	100	100
2	G	9/9 (100%)	7 (78%)	2 (22%)	1	0

*Continued on next page...*

Continued from previous page...

Mol	Chain	Analysed	Rotameric	Outliers	Percentiles
All	All	412/478 (86%)	408 (99%)	4 (1%)	80 89

All (4) residues with a non-rotameric sidechain are listed below:

Mol	Chain	Res	Type
1	A	363	ARG
1	A	541	LEU
2	G	2	HIS
2	G	12	SER

Some sidechains can be flipped to improve hydrogen bonding and reduce clashes. All (1) such sidechains are listed below:

Mol	Chain	Res	Type
2	G	10	GLN

### 5.3.3 RNA ⓘ

There are no RNA molecules in this entry.

## 5.4 Non-standard residues in protein, DNA, RNA chains ⓘ

4 non-standard protein/DNA/RNA residues are modelled in this entry.

In the following table, the Counts columns list the number of bonds (or angles) for which Mogul statistics could be retrieved, the number of bonds (or angles) that are observed in the model and the number of bonds (or angles) that are defined in the chemical component dictionary. The Link column lists molecule types, if any, to which the group is linked. The Z score for a bond length (or angle) is the number of standard deviations the observed value is removed from the expected value. A bond length (or angle) with  $|Z| > 2$  is considered an outlier worth inspection. RMSZ is the root-mean-square of all Z scores of the bond lengths (or angles).

Mol	Type	Chain	Res	Link	Bond lengths			Bond angles		
					Counts	RMSZ	# Z  > 2	Counts	RMSZ	# Z  > 2
2	66D	F	4	2	7,9,10	2.01	2 (28%)	7,12,14	2.92	4 (57%)
2	MK8	F	8	2	6,8,9	2.12	1 (16%)	4,10,12	2.15	3 (75%)
2	66D	G	4	2	7,9,10	1.55	2 (28%)	7,12,14	2.23	3 (42%)
2	MK8	G	8	2	6,8,9	1.94	1 (16%)	4,10,12	1.82	2 (50%)

In the following table, the Chirals column lists the number of chiral outliers, the number of chiral centers analysed, the number of these observed in the model and the number defined in the chemical

component dictionary. Similar counts are reported in the Torsion and Rings columns. '-' means no outliers of that kind were identified.

Mol	Type	Chain	Res	Link	Chirals	Torsions	Rings
2	66D	F	4	2	-	0/8/10/13	0/0/0/0
2	MK8	F	8	2	-	0/6/8/11	0/0/0/0
2	66D	G	4	2	-	0/8/10/13	0/0/0/0
2	MK8	G	8	2	-	0/6/8/11	0/0/0/0

All (6) bond length outliers are listed below:

Mol	Chain	Res	Type	Atoms	Z	Observed(Å)	Ideal(Å)
2	F	8	MK8	CB-CA	-4.49	1.50	1.55
2	G	8	MK8	CB-CA	-4.37	1.50	1.55
2	G	4	66D	CE-CD	-2.21	1.36	1.50
2	G	4	66D	CD2-CC	2.09	1.59	1.52
2	F	4	66D	CB-CA	3.12	1.58	1.54
2	F	4	66D	CD2-CC	3.16	1.63	1.52

All (12) bond angle outliers are listed below:

Mol	Chain	Res	Type	Atoms	Z	Observed(°)	Ideal(°)
2	F	4	66D	CA-CB-CC	-4.74	102.38	118.45
2	F	4	66D	CD2-CC-CB	-4.06	92.29	111.23
2	G	4	66D	CA-CB-CC	-3.37	107.03	118.45
2	G	4	66D	CD2-CC-CB	-3.24	96.08	111.23
2	F	8	MK8	CB-CG-CD	-2.80	104.33	113.08
2	G	8	MK8	CB-CG-CD	-2.53	105.18	113.08
2	G	4	66D	CD2-CC-CD	-2.36	95.38	111.64
2	G	8	MK8	CB1-CA-CB	-2.13	107.25	111.00
2	F	4	66D	CD2-CC-CD	-2.01	97.80	111.64
2	F	8	MK8	CB1-CA-C	2.13	115.80	107.24
2	F	8	MK8	CB1-CA-CB	2.45	115.31	111.00
2	F	4	66D	CD-CC-CB	3.86	134.89	113.61

There are no chirality outliers.

There are no torsion outliers.

There are no ring outliers.

2 monomers are involved in 3 short contacts:

Mol	Chain	Res	Type	Clashes	Symm-Clashes
2	G	4	66D	2	0
2	G	8	MK8	2	0

## 5.5 Carbohydrates [i](#)

There are no carbohydrates in this entry.

## 5.6 Ligand geometry [i](#)

4 ligands are modelled in this entry.

In the following table, the Counts columns list the number of bonds (or angles) for which Mogul statistics could be retrieved, the number of bonds (or angles) that are observed in the model and the number of bonds (or angles) that are defined in the chemical component dictionary. The Link column lists molecule types, if any, to which the group is linked. The Z score for a bond length (or angle) is the number of standard deviations the observed value is removed from the expected value. A bond length (or angle) with  $|Z| > 2$  is considered an outlier worth inspection. RMSZ is the root-mean-square of all Z scores of the bond lengths (or angles).

Mol	Type	Chain	Res	Link	Bond lengths			Bond angles		
					Counts	RMSZ	# $ Z  > 2$	Counts	RMSZ	# $ Z  > 2$
3	EST	A	601	-	23,23,23	1.54	3 (13%)	36,36,36	1.23	5 (13%)
4	GOL	A	602	-	5,5,5	0.42	0	5,5,5	0.67	0
3	EST	B	601	-	23,23,23	1.37	2 (8%)	36,36,36	0.92	1 (2%)
4	GOL	B	602	-	5,5,5	0.51	0	5,5,5	0.97	0

In the following table, the Chirals column lists the number of chiral outliers, the number of chiral centers analysed, the number of these observed in the model and the number defined in the chemical component dictionary. Similar counts are reported in the Torsion and Rings columns. '-' means no outliers of that kind were identified.

Mol	Type	Chain	Res	Link	Chirals	Torsions	Rings
3	EST	A	601	-	-	0/0/40/40	0/4/4/4
4	GOL	A	602	-	-	0/4/4/4	0/0/0/0
3	EST	B	601	-	-	0/0/40/40	0/4/4/4
4	GOL	B	602	-	-	0/4/4/4	0/0/0/0

All (5) bond length outliers are listed below:

Mol	Chain	Res	Type	Atoms	Z	Observed(Å)	Ideal(Å)
3	A	601	EST	C10-C9	-2.67	1.48	1.52
3	B	601	EST	C10-C9	-2.25	1.48	1.52
3	A	601	EST	O3-C3	2.16	1.42	1.37
3	A	601	EST	C5-C10	5.18	1.48	1.39
3	B	601	EST	C5-C10	5.56	1.49	1.39

All (6) bond angle outliers are listed below:

Mol	Chain	Res	Type	Atoms	Z	Observed(°)	Ideal(°)
3	A	601	EST	C9-C8-C14	-2.38	105.33	108.81
3	B	601	EST	C9-C8-C14	-2.37	105.35	108.81
3	A	601	EST	C11-C9-C10	-2.30	111.12	113.77
3	A	601	EST	C2-C3-C4	-2.04	117.94	120.20
3	A	601	EST	O3-C3-C4	2.66	126.77	119.82
3	A	601	EST	C1-C2-C3	3.73	124.11	119.88

There are no chirality outliers.

There are no torsion outliers.

There are no ring outliers.

2 monomers are involved in 5 short contacts:

Mol	Chain	Res	Type	Clashes	Symm-Clashes
4	A	602	GOL	4	0
4	B	602	GOL	1	0

## 5.7 Other polymers [i](#)

There are no such residues in this entry.

## 5.8 Polymer linkage issues [i](#)

There are no chain breaks in this entry.



## 6 Fit of model and data

### 6.1 Protein, DNA and RNA chains

In the following table, the column labelled ‘#RSRZ > 2’ contains the number (and percentage) of RSRZ outliers, followed by percent RSRZ outliers for the chain as percentile scores relative to all X-ray entries and entries of similar resolution. The OWAB column contains the minimum, median, 95<sup>th</sup> percentile and maximum values of the occupancy-weighted average B-factor per residue. The column labelled ‘Q < 0.9’ lists the number of (and percentage) of residues with an average occupancy less than 0.9.

Mol	Chain	Analysed	<RSRZ>	#RSRZ>2	OWAB(Å <sup>2</sup> )	Q<0.9
1	A	231/258 (89%)	-0.02	6 (2%) 56 63	20, 30, 44, 61	1 (0%)
1	B	223/258 (86%)	0.16	10 (4%) 34 40	22, 36, 56, 64	0
2	F	9/13 (69%)	0.69	1 (11%) 6 8	28, 30, 49, 57	0
2	G	9/13 (69%)	2.51	3 (33%) 0 0	46, 55, 85, 93	0
All	All	472/542 (87%)	0.13	20 (4%) 37 42	20, 32, 55, 93	1 (0%)

All (20) RSRZ outliers are listed below:

Mol	Chain	Res	Type	RSRZ
2	G	12	SER	9.4
2	F	12	SER	6.7
2	G	2	HIS	5.0
1	B	308	LEU	4.1
1	A	459	TYR	3.3
1	B	417	CYS	3.2
1	A	308	LEU	3.2
2	G	11	ASP	3.2
1	B	459	TYR	2.8
1	B	331	TYR	2.7
1	B	460	THR	2.6
1	B	391	LEU	2.5
1	A	461	PHE	2.4
1	B	387	LEU	2.3
1	B	530	CYS	2.2
1	A	474	HIS	2.2
1	B	533	VAL	2.1
1	A	387	LEU	2.1
1	A	453	LEU	2.1
1	B	370	LEU	2.1

## 6.2 Non-standard residues in protein, DNA, RNA chains [i](#)

In the following table, the Atoms column lists the number of modelled atoms in the group and the number defined in the chemical component dictionary. LLDF column lists the quality of electron density of the group with respect to its neighbouring residues in protein, DNA or RNA chains. The B-factors column lists the minimum, median, 95<sup>th</sup> percentile and maximum values of B factors of atoms in the group. The column labelled 'Q < 0.9' lists the number of atoms with occupancy less than 0.9.

Mol	Type	Chain	Res	Atoms	RSCC	RSR	LLDF	B-factors(Å <sup>2</sup> )	Q<0.9
2	66D	G	4	10/11	0.92	0.15	-	30,45,56,57	0
2	MK8	G	8	9/10	0.94	0.12	-	45,47,48,49	0
2	66D	F	4	10/11	0.93	0.13	-	30,31,35,37	0
2	MK8	F	8	9/10	0.97	0.11	-	29,30,31,31	0

## 6.3 Carbohydrates [i](#)

There are no carbohydrates in this entry.

## 6.4 Ligands [i](#)

In the following table, the Atoms column lists the number of modelled atoms in the group and the number defined in the chemical component dictionary. LLDF column lists the quality of electron density of the group with respect to its neighbouring residues in protein, DNA or RNA chains. The B-factors column lists the minimum, median, 95<sup>th</sup> percentile and maximum values of B factors of atoms in the group. The column labelled 'Q < 0.9' lists the number of atoms with occupancy less than 0.9.

Mol	Type	Chain	Res	Atoms	RSCC	RSR	LLDF	B-factors(Å <sup>2</sup> )	Q<0.9
4	GOL	A	602	6/6	0.83	0.27	2.68	39,47,47,48	0
4	GOL	B	602	6/6	0.83	0.20	1.59	43,52,52,52	0
3	EST	B	601	20/20	0.94	0.23	1.35	26,27,30,30	0
3	EST	A	601	20/20	0.90	0.19	0.96	23,24,26,26	0

## 6.5 Other polymers [i](#)

There are no such residues in this entry.