



Full wwPDB X-ray Structure Validation Report ⓘ

Feb 15, 2017 – 01:11 am GMT

PDB ID : 3I26
Title : Structure of bovine torovirus Hemagglutinin-Esterase
Authors : Zeng, Q.H.; Huizinga, E.G.
Deposited on : 2009-06-29
Resolution : 1.80 Å(reported)

This is a Full wwPDB X-ray Structure Validation Report for a publicly released PDB entry.

We welcome your comments at validation@mail.wwpdb.org

A user guide is available at

<http://wwpdb.org/validation/2016/XrayValidationReportHelp>

with specific help available everywhere you see the ⓘ symbol.

The following versions of software and data (see [references ⓘ](#)) were used in the production of this report:

MolProbity : 4.02b-467
Mogul : 1.7.2 (RC1), CSD as538be (2017)
Xtriage (Phenix) : 1.9-1692
EDS : trunk28620
Percentile statistics : 20161228.v01 (using entries in the PDB archive December 28th 2016)
Refmac : 5.8.0135
CCP4 : 6.5.0
Ideal geometry (proteins) : Engh & Huber (2001)
Ideal geometry (DNA, RNA) : Parkinson et al. (1996)
Validation Pipeline (wwPDB-VP) : recalc28949

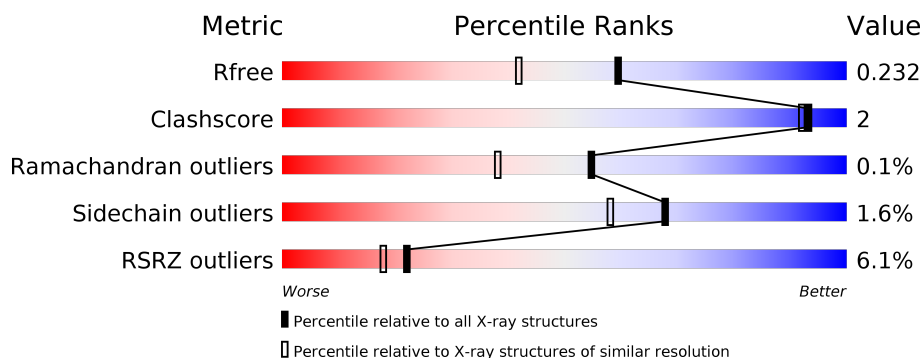
1 Overall quality at a glance

The following experimental techniques were used to determine the structure:

X-RAY DIFFRACTION

The reported resolution of this entry is 1.80 Å.

Percentile scores (ranging between 0-100) for global validation metrics of the entry are shown in the following graphic. The table shows the number of entries on which the scores are based.



Metric	Whole archive (#Entries)	Similar resolution (#Entries, resolution range(Å))
R_{free}	100719	4827 (1.80-1.80)
Clashscore	112137	5742 (1.80-1.80)
Ramachandran outliers	110173	5676 (1.80-1.80)
Sidechain outliers	110143	5675 (1.80-1.80)
RSRZ outliers	101464	4906 (1.80-1.80)

The table below summarises the geometric issues observed across the polymeric chains and their fit to the electron density. The red, orange, yellow and green segments on the lower bar indicate the fraction of residues that contain outliers for ≥ 3 , 2, 1 and 0 types of geometric quality criteria. A grey segment represents the fraction of residues that are not modelled. The numeric value for each fraction is indicated below the corresponding segment, with a dot representing fractions $\leq 5\%$. The upper red bar (where present) indicates the fraction of residues that have poor fit to the electron density. The numeric value is given above the bar.

Mol	Chain	Length	Quality of chain
1	A	384	<div> <div style="width: 90%;"></div> <div style="width: 5%; background-color: yellow;"></div> <div style="width: 5%; background-color: grey;"></div> <div>90% 5% 5%</div> </div>
1	B	384	<div> <div style="width: 91%;"></div> <div style="width: 5%; background-color: yellow;"></div> <div style="width: 5%; background-color: grey;"></div> <div>91% • 5%</div> </div>
1	C	384	<div> <div style="width: 20%; background-color: red;"></div> <div style="width: 87%;"></div> <div style="width: 6%; background-color: yellow;"></div> <div style="width: 7%; background-color: grey;"></div> <div>20% 87% 6% 7%</div> </div>
1	D	384	<div> <div style="width: 3%; background-color: red;"></div> <div style="width: 92%;"></div> <div style="width: 5%; background-color: yellow;"></div> <div style="width: 5%; background-color: grey;"></div> <div>3% 92% • • •</div> </div>

The following table lists non-polymeric compounds, carbohydrate monomers and non-standard residues in protein, DNA, RNA chains that are outliers for geometric or electron-density-fit crite-

ria:

Mol	Type	Chain	Res	Chirality	Geometry	Clashes	Electron density
3	NAG	B	5156	-	-	-	X
4	NAG	A	5156	-	-	-	X
4	NAG	D	5156	-	-	-	X
6	NAG	B	5152	-	-	-	X

2 Entry composition

There are 8 unique types of molecules in this entry. The entry contains 13255 atoms, of which 0 are hydrogens and 0 are deuteriums.

In the tables below, the ZeroOcc column contains the number of atoms modelled with zero occupancy, the AltConf column contains the number of residues with at least one atom in alternate conformation and the Trace column contains the number of residues modelled with at most 2 atoms.

- Molecule 1 is a protein called Hemagglutinin-esterase.

Mol	Chain	Residues	Atoms					ZeroOcc	AltConf	Trace
1	A	365	Total	C	N	O	S	0	0	0
			2862	1821	455	559	27			
1	B	364	Total	C	N	O	S	0	0	0
			2855	1819	454	555	27			
1	C	358	Total	C	N	O	S	0	0	0
			2813	1795	447	544	27			
1	D	369	Total	C	N	O	S	0	0	0
			2889	1837	460	565	27			

There are 24 discrepancies between the modelled and reference sequences:

Chain	Residue	Modelled	Actual	Comment	Reference
A	393	ASP	-	EXPRESSION TAG	UNP P0C0V9
A	394	PRO	-	EXPRESSION TAG	UNP P0C0V9
A	395	LEU	-	EXPRESSION TAG	UNP P0C0V9
A	396	VAL	-	EXPRESSION TAG	UNP P0C0V9
A	397	PRO	-	EXPRESSION TAG	UNP P0C0V9
A	398	ARG	-	EXPRESSION TAG	UNP P0C0V9
B	393	ASP	-	EXPRESSION TAG	UNP P0C0V9
B	394	PRO	-	EXPRESSION TAG	UNP P0C0V9
B	395	LEU	-	EXPRESSION TAG	UNP P0C0V9
B	396	VAL	-	EXPRESSION TAG	UNP P0C0V9
B	397	PRO	-	EXPRESSION TAG	UNP P0C0V9
B	398	ARG	-	EXPRESSION TAG	UNP P0C0V9
C	393	ASP	-	EXPRESSION TAG	UNP P0C0V9
C	394	PRO	-	EXPRESSION TAG	UNP P0C0V9
C	395	LEU	-	EXPRESSION TAG	UNP P0C0V9
C	396	VAL	-	EXPRESSION TAG	UNP P0C0V9
C	397	PRO	-	EXPRESSION TAG	UNP P0C0V9
C	398	ARG	-	EXPRESSION TAG	UNP P0C0V9
D	393	ASP	-	EXPRESSION TAG	UNP P0C0V9
D	394	PRO	-	EXPRESSION TAG	UNP P0C0V9
D	395	LEU	-	EXPRESSION TAG	UNP P0C0V9

Continued on next page...

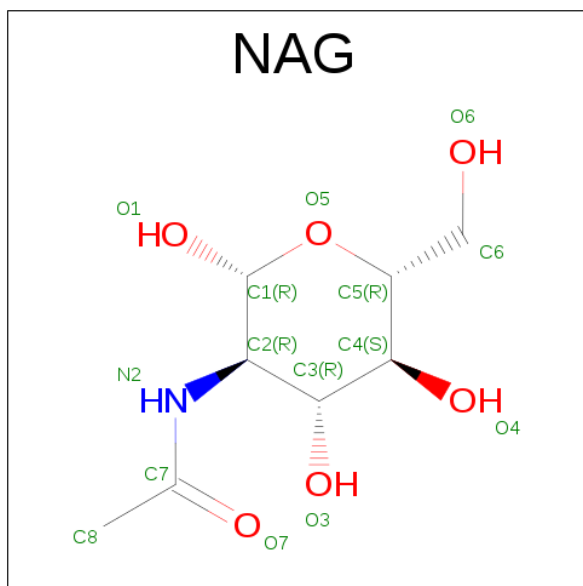
Continued from previous page...

Chain	Residue	Modelled	Actual	Comment	Reference
D	396	VAL	-	EXPRESSION TAG	UNP P0C0V9
D	397	PRO	-	EXPRESSION TAG	UNP P0C0V9
D	398	ARG	-	EXPRESSION TAG	UNP P0C0V9

- Molecule 2 is a polymer of unknown type called SUGAR (4-MER).

Mol	Chain	Residues	Atoms				ZeroOcc	AltConf
2	A	4	Total	C	N	O	0	0
			50	28	2	20		
2	A	4	Total	C	N	O	0	0
			50	28	2	20		
2	D	4	Total	C	N	O	0	0
			50	28	2	20		

- Molecule 3 is SUGAR (N-ACETYL-D-GLUCOSAMINE) (three-letter code: NAG) (formula: $C_8H_{15}NO_6$).



Mol	Chain	Residues	Atoms				ZeroOcc	AltConf
3	A	1	Total	C	N	O	0	0
			14	8	1	5		
3	A	1	Total	C	N	O	0	0
			14	8	1	5		
3	B	1	Total	C	N	O	0	0
			14	8	1	5		
3	D	1	Total	C	N	O	0	0
			14	8	1	5		

- Molecule 4 is a polymer of unknown type called SUGAR (2-MER).

Mol	Chain	Residues	Atoms				ZeroOcc	AltConf
4	A	2	Total	C	N	O	0	0
			28	16	2	10		
4	B	2	Total	C	N	O	0	0
			28	16	2	10		
4	B	2	Total	C	N	O	0	0
			28	16	2	10		
4	D	2	Total	C	N	O	0	0
			28	16	2	10		
4	D	2	Total	C	N	O	0	0
			28	16	2	10		

- Molecule 5 is a polymer of unknown type called SUGAR (5-MER).

Mol	Chain	Residues	Atoms				ZeroOcc	AltConf
5	A	5	Total	C	N	O	0	0
			61	34	2	25		

- Molecule 6 is a polymer of unknown type called SUGAR (3-MER).

Mol	Chain	Residues	Atoms				ZeroOcc	AltConf
6	B	3	Total	C	N	O	0	0
			39	22	2	15		
6	C	3	Total	C	N	O	0	0
			39	22	2	15		

- Molecule 7 is a polymer of unknown type called SUGAR (7-MER).

Mol	Chain	Residues	Atoms				ZeroOcc	AltConf
7	D	7	Total	C	N	O	0	0
			83	46	2	35		

- Molecule 8 is water.

Mol	Chain	Residues	Atoms		ZeroOcc	AltConf
8	A	415	Total	O	0	0
			415	415		
8	B	440	Total	O	0	0
			440	440		
8	C	87	Total	O	0	0
			87	87		

Continued on next page...

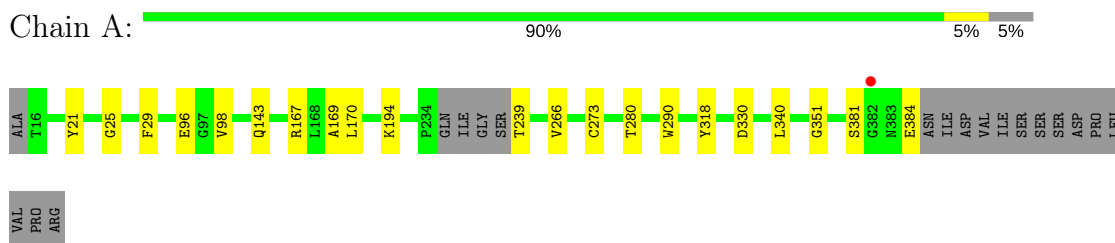
Continued from previous page...

Mol	Chain	Residues	Atoms		ZeroOcc	AltConf
8	D	326	Total 326	O 326	0	0

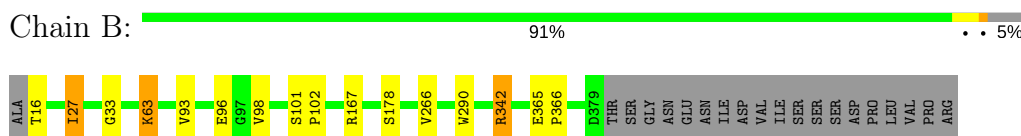
3 Residue-property plots [i](#)

These plots are drawn for all protein, RNA and DNA chains in the entry. The first graphic for a chain summarises the proportions of the various outlier classes displayed in the second graphic. The second graphic shows the sequence view annotated by issues in geometry and electron density. Residues are color-coded according to the number of geometric quality criteria for which they contain at least one outlier: green = 0, yellow = 1, orange = 2 and red = 3 or more. A red dot above a residue indicates a poor fit to the electron density ($RSRZ > 2$). Stretches of 2 or more consecutive residues without any outlier are shown as a green connector. Residues present in the sample, but not in the model, are shown in grey.

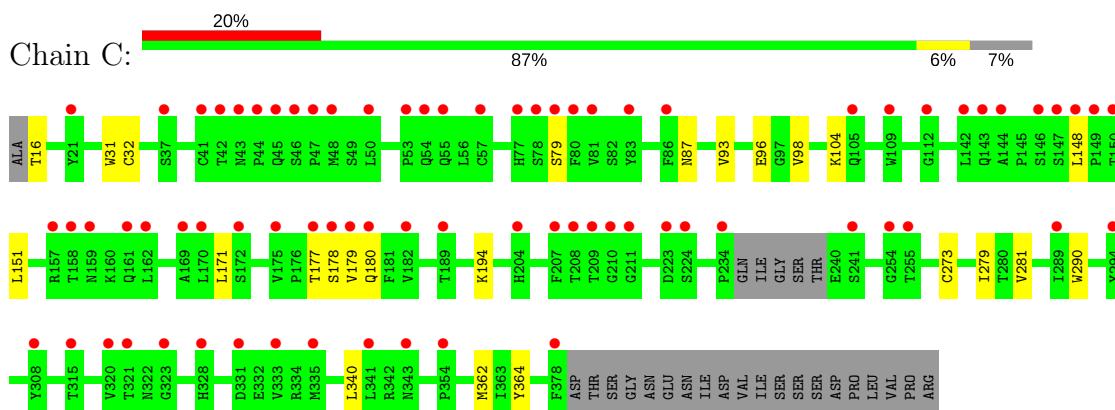
- Molecule 1: Hemagglutinin-esterase



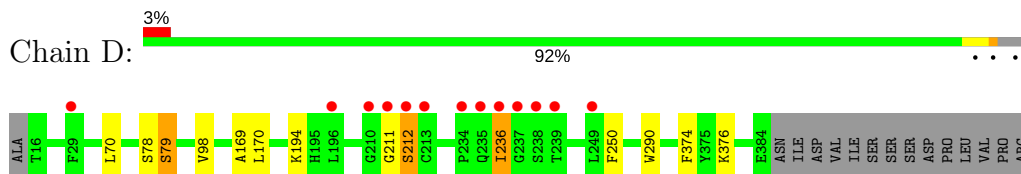
- Molecule 1: Hemagglutinin-esterase



- Molecule 1: Hemagglutinin-esterase



- Molecule 1: Hemagglutinin-esterase



4 Data and refinement statistics

Property	Value	Source
Space group	P 21 21 21	Depositor
Cell constants a, b, c, α , β , γ	67.79Å 113.43Å 273.54Å 90.00° 90.00° 90.00°	Depositor
Resolution (Å)	48.16 – 1.80 48.16 – 1.80	Depositor EDS
% Data completeness (in resolution range)	95.1 (48.16-1.80) 95.2 (48.16-1.80)	Depositor EDS
R_{merge}	0.07	Depositor
R_{sym}	(Not available)	Depositor
$\langle I/\sigma(I) \rangle$ ¹	1.67 (at 1.79Å)	Xtriage
Refinement program	REFMAC 5.5.0072	Depositor
R, R_{free}	0.188 , 0.218 0.203 , 0.232	Depositor DCC
R_{free} test set	9414 reflections (5.31%)	DCC
Wilson B-factor (Å ²)	19.5	Xtriage
Anisotropy	0.053	Xtriage
Bulk solvent k_{sol} (e/Å ³), B_{sol} (Å ²)	0.36 , 44.9	EDS
L-test for twinning ²	$\langle L \rangle = 0.41$, $\langle L^2 \rangle = 0.23$	Xtriage
Estimated twinning fraction	No twinning to report.	Xtriage
F_o, F_c correlation	0.94	EDS
Total number of atoms	13255	wwPDB-VP
Average B, all atoms (Å ²)	25.0	wwPDB-VP

Xtriage's analysis on translational NCS is as follows: *The largest off-origin peak in the Patterson function is 2.94% of the height of the origin peak. No significant pseudotranslation is detected.*

¹Intensities estimated from amplitudes.

²Theoretical values of $\langle |L| \rangle$, $\langle L^2 \rangle$ for acentric reflections are 0.5, 0.333 respectively for untwinned datasets, and 0.375, 0.2 for perfectly twinned datasets.

5 Model quality

5.1 Standard geometry

Bond lengths and bond angles in the following residue types are not validated in this section: BMA, NAG, MAN

The Z score for a bond length (or angle) is the number of standard deviations the observed value is removed from the expected value. A bond length (or angle) with $|Z| > 5$ is considered an outlier worth inspection. RMSZ is the root-mean-square of all Z scores of the bond lengths (or angles).

Mol	Chain	Bond lengths		Bond angles	
		RMSZ	$\# Z > 5$	RMSZ	$\# Z > 5$
1	A	0.62	0/2949	0.69	0/4021
1	B	0.66	0/2943	0.71	1/4014 (0.0%)
1	C	0.43	0/2900	0.53	0/3954
1	D	0.54	0/2977	0.65	0/4060
All	All	0.57	0/11769	0.65	1/16049 (0.0%)

Chiral center outliers are detected by calculating the chiral volume of a chiral center and verifying if the center is modelled as a planar moiety or with the opposite hand. A planarity outlier is detected by checking planarity of atoms in a peptide group, atoms in a mainchain group or atoms of a sidechain that are expected to be planar.

Mol	Chain	#Chirality outliers	#Planarity outliers
1	A	0	1

There are no bond length outliers.

All (1) bond angle outliers are listed below:

Mol	Chain	Res	Type	Atoms	Z	Observed($^{\circ}$)	Ideal($^{\circ}$)
1	B	27	ILE	CB-CA-C	-5.50	100.59	111.60

There are no chirality outliers.

All (1) planarity outliers are listed below:

Mol	Chain	Res	Type	Group
1	A	381	SER	Peptide

5.2 Too-close contacts ⓘ

In the following table, the Non-H and H(model) columns list the number of non-hydrogen atoms and hydrogen atoms in the chain respectively. The H(added) column lists the number of hydrogen atoms added and optimized by MolProbity. The Clashes column lists the number of clashes within the asymmetric unit, whereas Symm-Clashes lists symmetry related clashes.

Mol	Chain	Non-H	H(model)	H(added)	Clashes	Symm-Clashes
1	A	2862	0	2668	7	0
1	B	2855	0	2671	9	0
1	C	2813	0	2635	13	0
1	D	2889	0	2697	10	0
2	A	100	0	86	0	0
2	D	50	0	43	0	0
3	A	28	0	26	0	0
3	B	14	0	13	0	0
3	D	14	0	13	0	0
4	A	28	0	25	0	0
4	B	56	0	50	0	0
4	D	56	0	50	0	0
5	A	61	0	52	0	0
6	B	39	0	34	0	0
6	C	39	0	34	0	0
7	D	83	0	70	0	0
8	A	415	0	0	1	0
8	B	440	0	0	1	0
8	C	87	0	0	0	0
8	D	326	0	0	1	0
All	All	13255	0	11167	39	0

The all-atom clashscore is defined as the number of clashes found per 1000 atoms (including hydrogen atoms). The all-atom clashscore for this structure is 2.

All (39) close contacts within the same asymmetric unit are listed below, sorted by their clash magnitude.

Atom-1	Atom-2	Interatomic distance (Å)	Clash overlap (Å)
1:B:27:ILE:O	1:B:27:ILE:HG22	1.79	0.80
1:D:211:GLY:HA3	1:D:212:SER:CB	2.13	0.77
1:C:16:THR:O	1:C:16:THR:HG23	1.87	0.74
1:D:211:GLY:HA3	1:D:212:SER:HB2	1.74	0.69
1:B:27:ILE:CG2	1:B:27:ILE:O	2.46	0.64
1:C:98:VAL:HG22	1:C:290:TRP:CE2	2.41	0.55
1:C:148:LEU:HD22	1:C:151:LEU:HD12	1.90	0.53

Continued on next page...

Continued from previous page...

Atom-1	Atom-2	Interatomic distance (Å)	Clash overlap (Å)
1:A:280:THR:HG23	8:A:703:HOH:O	2.08	0.52
1:A:25:GLY:HA2	1:A:340:LEU:HD23	1.94	0.49
1:D:211:GLY:HA3	1:D:212:SER:HB3	1.91	0.49
1:C:16:THR:CG2	1:C:16:THR:O	2.59	0.49
1:A:21:TYR:O	1:A:351:GLY:HA3	2.11	0.49
1:D:194:LYS:NZ	8:D:997:HOH:O	2.46	0.49
1:C:32:CYS:HB2	1:C:87:ASN:ND2	2.29	0.47
1:B:167:ARG:O	1:B:266:VAL:HA	2.16	0.46
1:C:279:ILE:HD12	1:C:281:VAL:CG2	2.45	0.46
1:C:171:LEU:HD13	1:C:177:THR:HG21	1.97	0.46
1:D:211:GLY:CA	1:D:212:SER:CB	2.92	0.44
1:B:342:ARG:HD3	8:B:529:HOH:O	2.17	0.43
1:C:171:LEU:CD1	1:C:177:THR:HG21	2.48	0.43
1:A:98:VAL:HG22	1:A:290:TRP:CE2	2.54	0.43
1:C:79:SER:O	1:C:104:LYS:NZ	2.52	0.43
1:A:169:ALA:C	1:A:170:LEU:HD12	2.39	0.42
1:C:31:TRP:CZ3	1:C:340:LEU:HD22	2.54	0.42
1:C:93:VAL:HG21	1:C:340:LEU:HD21	2.02	0.42
1:D:169:ALA:C	1:D:170:LEU:HD12	2.40	0.42
1:A:318:TYR:CZ	1:A:330:ASP:HB2	2.55	0.41
1:B:63:LYS:HD3	1:B:63:LYS:HA	1.96	0.41
1:D:374:PHE:CE1	1:D:376:LYS:HB2	2.55	0.41
1:C:279:ILE:HD12	1:C:281:VAL:HG23	2.02	0.41
1:C:362:MET:HG2	1:C:364:TYR:CZ	2.55	0.41
1:B:365:GLU:HB3	1:B:366:PRO:HA	2.02	0.41
1:B:98:VAL:HG22	1:B:290:TRP:CE2	2.56	0.41
1:A:167:ARG:O	1:A:266:VAL:HA	2.21	0.41
1:B:33:GLY:HA2	1:B:93:VAL:O	2.21	0.40
1:B:101:SER:HB3	1:B:102:PRO:CD	2.51	0.40
1:D:70:LEU:C	1:D:70:LEU:HD23	2.41	0.40
1:D:78:SER:O	1:D:79:SER:CB	2.70	0.40
1:D:98:VAL:HG22	1:D:290:TRP:CE2	2.56	0.40

There are no symmetry-related clashes.

5.3 Torsion angles

5.3.1 Protein backbone

In the following table, the Percentiles column shows the percent Ramachandran outliers of the chain as a percentile score with respect to all X-ray entries followed by that with respect to entries

of similar resolution.

The Analysed column shows the number of residues for which the backbone conformation was analysed, and the total number of residues.

Mol	Chain	Analysed	Favoured	Allowed	Outliers	Percentiles	
1	A	361/384 (94%)	348 (96%)	13 (4%)	0	100	100
1	B	362/384 (94%)	348 (96%)	14 (4%)	0	100	100
1	C	354/384 (92%)	338 (96%)	16 (4%)	0	100	100
1	D	367/384 (96%)	351 (96%)	14 (4%)	2 (0%)	32	17
All	All	1444/1536 (94%)	1385 (96%)	57 (4%)	2 (0%)	55	38

All (2) Ramachandran outliers are listed below:

Mol	Chain	Res	Type
1	D	212	SER
1	D	236	ILE

5.3.2 Protein sidechains ⓘ

In the following table, the Percentiles column shows the percent sidechain outliers of the chain as a percentile score with respect to all X-ray entries followed by that with respect to entries of similar resolution.

The Analysed column shows the number of residues for which the sidechain conformation was analysed, and the total number of residues.

Mol	Chain	Analysed	Rotameric	Outliers	Percentiles	
1	A	327/344 (95%)	320 (98%)	7 (2%)	59	46
1	B	326/344 (95%)	321 (98%)	5 (2%)	70	61
1	C	321/344 (93%)	315 (98%)	6 (2%)	62	50
1	D	330/344 (96%)	327 (99%)	3 (1%)	82	78
All	All	1304/1376 (95%)	1283 (98%)	21 (2%)	68	58

All (21) residues with a non-rotameric sidechain are listed below:

Mol	Chain	Res	Type
1	A	29	PHE
1	A	96	GLU
1	A	143	GLN
1	A	194	LYS

Continued on next page...

Continued from previous page...

Mol	Chain	Res	Type
1	A	239	THR
1	A	273	CYS
1	A	384	GLU
1	B	16	THR
1	B	63	LYS
1	B	96	GLU
1	B	178	SER
1	B	342	ARG
1	C	96	GLU
1	C	178	SER
1	C	179	VAL
1	C	180	GLN
1	C	194	LYS
1	C	273	CYS
1	D	79	SER
1	D	236	ILE
1	D	250	PHE

Some sidechains can be flipped to improve hydrogen bonding and reduce clashes. All (4) such sidechains are listed below:

Mol	Chain	Res	Type
1	B	54	GLN
1	B	161	GLN
1	C	152	GLN
1	C	293	GLN

5.3.3 RNA ⓘ

There are no RNA molecules in this entry.

5.4 Non-standard residues in protein, DNA, RNA chains ⓘ

There are no non-standard protein/DNA/RNA residues in this entry.

5.5 Carbohydrates ⓘ

40 carbohydrates are modelled in this entry.

In the following table, the Counts columns list the number of bonds (or angles) for which Mogul statistics could be retrieved, the number of bonds (or angles) that are observed in the model and

the number of bonds (or angles) that are defined in the chemical component dictionary. The Link column lists molecule types, if any, to which the group is linked. The Z score for a bond length (or angle) is the number of standard deviations the observed value is removed from the expected value. A bond length (or angle) with $|Z| > 2$ is considered an outlier worth inspection. RMSZ is the root-mean-square of all Z scores of the bond lengths (or angles).

Mol	Type	Chain	Res	Link	Bond lengths			Bond angles		
					Counts	RMSZ	# Z > 2	Counts	RMSZ	# Z > 2
2	NAG	A	5151	1,2	14,14,15	0.65	1 (7%)	15,19,21	1.68	2 (13%)
2	NAG	A	5152	2	14,14,15	0.71	0	15,19,21	0.80	0
2	BMA	A	5153	2	11,11,12	0.40	0	13,15,17	0.69	0
5	NAG	A	5154	1,5	14,14,15	0.67	0	15,19,21	1.16	1 (6%)
5	NAG	A	5155	5	14,14,15	0.63	0	15,19,21	1.15	2 (13%)
4	NAG	A	5156	1,4	14,14,15	0.87	0	15,19,21	1.54	3 (20%)
2	NAG	A	5158	1,2	14,14,15	0.56	0	15,19,21	0.96	1 (6%)
2	NAG	A	5159	2	14,14,15	0.44	0	15,19,21	1.19	1 (6%)
2	BMA	A	5160	2	11,11,12	0.52	0	13,15,17	0.90	1 (7%)
2	MAN	A	5161	2	11,11,12	0.58	0	13,15,17	0.65	0
5	BMA	A	5166	5	11,11,12	0.45	0	13,15,17	1.07	0
5	MAN	A	5167	5	11,11,12	0.55	0	13,15,17	1.09	1 (7%)
5	MAN	A	5168	5	11,11,12	0.61	0	13,15,17	1.02	2 (15%)
2	MAN	A	5170	2	11,11,12	0.59	0	13,15,17	1.12	1 (7%)
4	NAG	A	5174	4	14,14,15	0.44	0	15,19,21	2.20	3 (20%)
6	NAG	B	5151	1,6	14,14,15	0.60	0	15,19,21	1.62	3 (20%)
6	NAG	B	5152	6	14,14,15	0.47	0	15,19,21	1.07	0
6	BMA	B	5153	6	11,11,12	0.54	0	13,15,17	1.01	0
4	NAG	B	5157	1,4	14,14,15	0.66	0	15,19,21	0.83	0
4	NAG	B	5158	1,4	14,14,15	0.64	0	15,19,21	1.03	1 (6%)
4	NAG	B	5159	4	14,14,15	0.51	0	15,19,21	0.99	0
4	NAG	B	5173	4	14,14,15	0.49	0	15,19,21	1.19	1 (6%)
6	NAG	C	5158	1,6	14,14,15	0.48	0	15,19,21	0.97	1 (6%)
6	NAG	C	5159	6	14,14,15	0.57	0	15,19,21	0.91	0
6	BMA	C	5160	6	11,11,12	0.50	0	13,15,17	0.90	1 (7%)
2	NAG	D	5151	1,2	14,14,15	0.57	0	15,19,21	0.91	0
2	NAG	D	5152	2	14,14,15	0.70	0	15,19,21	1.00	1 (6%)
2	BMA	D	5153	2	11,11,12	0.53	0	13,15,17	2.64	4 (30%)
4	NAG	D	5154	1,4	14,14,15	0.55	0	15,19,21	1.16	1 (6%)
4	NAG	D	5155	4	14,14,15	0.49	0	15,19,21	1.36	2 (13%)
4	NAG	D	5156	1,4	14,14,15	0.41	0	15,19,21	1.66	3 (20%)
7	NAG	D	5158	1,7	14,14,15	0.55	0	15,19,21	1.21	2 (13%)

Mol	Type	Chain	Res	Link	Bond lengths			Bond angles		
					Counts	RMSZ	# Z > 2	Counts	RMSZ	# Z > 2
7	NAG	D	5159	7	14,14,15	0.69	0	15,19,21	1.05	0
7	BMA	D	5160	7	11,11,12	0.37	0	13,15,17	1.04	1 (7%)
7	MAN	D	5161	7	11,11,12	0.69	0	13,15,17	0.97	0
7	MAN	D	5162	7	11,11,12	0.58	0	13,15,17	0.96	0
7	MAN	D	5163	7	11,11,12	0.53	0	13,15,17	0.84	1 (7%)
7	MAN	D	5164	7	11,11,12	0.57	0	13,15,17	0.76	0
2	MAN	D	5170	2	11,11,12	0.51	0	13,15,17	0.83	1 (7%)
4	NAG	D	5174	4	14,14,15	0.46	0	15,19,21	1.31	2 (13%)

In the following table, the Chirals column lists the number of chiral outliers, the number of chiral centers analysed, the number of these observed in the model and the number defined in the chemical component dictionary. Similar counts are reported in the Torsion and Rings columns. '-' means no outliers of that kind were identified.

Mol	Type	Chain	Res	Link	Chirals	Torsions	Rings
2	NAG	A	5151	1,2	-	0/6/23/26	0/1/1/1
2	NAG	A	5152	2	-	0/6/23/26	0/1/1/1
2	BMA	A	5153	2	-	0/2/19/22	0/1/1/1
5	NAG	A	5154	1,5	-	0/6/23/26	0/1/1/1
5	NAG	A	5155	5	-	0/6/23/26	0/1/1/1
4	NAG	A	5156	1,4	-	0/6/23/26	0/1/1/1
2	NAG	A	5158	1,2	-	0/6/23/26	0/1/1/1
2	NAG	A	5159	2	-	0/6/23/26	0/1/1/1
2	BMA	A	5160	2	-	0/2/19/22	0/1/1/1
2	MAN	A	5161	2	-	0/2/19/22	0/1/1/1
5	BMA	A	5166	5	-	0/2/19/22	0/1/1/1
5	MAN	A	5167	5	-	0/2/19/22	0/1/1/1
5	MAN	A	5168	5	-	0/2/19/22	0/1/1/1
2	MAN	A	5170	2	-	0/2/19/22	0/1/1/1
4	NAG	A	5174	4	-	0/6/23/26	0/1/1/1
6	NAG	B	5151	1,6	-	0/6/23/26	0/1/1/1
6	NAG	B	5152	6	-	0/6/23/26	0/1/1/1
6	BMA	B	5153	6	-	0/2/19/22	0/1/1/1
4	NAG	B	5157	1,4	-	0/6/23/26	0/1/1/1
4	NAG	B	5158	1,4	-	0/6/23/26	0/1/1/1
4	NAG	B	5159	4	-	0/6/23/26	0/1/1/1
4	NAG	B	5173	4	-	0/6/23/26	0/1/1/1
6	NAG	C	5158	1,6	-	0/6/23/26	0/1/1/1
6	NAG	C	5159	6	-	0/6/23/26	0/1/1/1
6	BMA	C	5160	6	-	0/2/19/22	0/1/1/1
2	NAG	D	5151	1,2	-	0/6/23/26	0/1/1/1
2	NAG	D	5152	2	-	0/6/23/26	0/1/1/1

Continued on next page...

Continued from previous page...

Mol	Type	Chain	Res	Link	Chirals	Torsions	Rings
2	BMA	D	5153	2	-	0/2/19/22	0/1/1/1
4	NAG	D	5154	1,4	-	0/6/23/26	0/1/1/1
4	NAG	D	5155	4	-	0/6/23/26	0/1/1/1
4	NAG	D	5156	1,4	-	0/6/23/26	0/1/1/1
7	NAG	D	5158	1,7	-	0/6/23/26	0/1/1/1
7	NAG	D	5159	7	-	0/6/23/26	0/1/1/1
7	BMA	D	5160	7	-	0/2/19/22	0/1/1/1
7	MAN	D	5161	7	-	0/2/19/22	0/1/1/1
7	MAN	D	5162	7	-	0/2/19/22	0/1/1/1
7	MAN	D	5163	7	-	0/2/19/22	0/1/1/1
7	MAN	D	5164	7	-	0/2/19/22	1/1/1/1
2	MAN	D	5170	2	-	0/2/19/22	0/1/1/1
4	NAG	D	5174	4	-	0/6/23/26	0/1/1/1

All (1) bond length outliers are listed below:

Mol	Chain	Res	Type	Atoms	Z	Observed(Å)	Ideal(Å)
2	A	5151	NAG	O5-C1	-2.09	1.40	1.43

All (43) bond angle outliers are listed below:

Mol	Chain	Res	Type	Atoms	Z	Observed(°)	Ideal(°)
2	A	5159	NAG	O5-C1-C2	-3.57	106.51	111.47
4	A	5156	NAG	O5-C1-C2	-3.11	107.14	111.47
4	D	5156	NAG	O5-C1-C2	-3.03	107.26	111.47
7	D	5158	NAG	O5-C1-C2	-2.91	107.42	111.47
4	A	5174	NAG	C4-C3-C2	-2.80	106.91	111.02
2	A	5151	NAG	O5-C1-C2	-2.61	107.85	111.47
4	A	5156	NAG	O7-C7-C8	-2.51	117.49	122.06
6	B	5151	NAG	O4-C4-C5	-2.43	103.15	109.28
4	D	5174	NAG	O4-C4-C3	-2.27	105.42	110.36
4	D	5155	NAG	C3-C4-C5	-2.23	106.29	110.22
2	D	5152	NAG	O4-C4-C3	-2.20	105.57	110.36
4	B	5158	NAG	C2-N2-C7	-2.19	119.74	122.94
5	A	5155	NAG	O4-C4-C3	-2.16	105.67	110.36
4	D	5174	NAG	O3-C3-C4	-2.14	105.69	110.36
4	A	5174	NAG	C6-C5-C4	-2.05	108.21	113.00
5	A	5154	NAG	O7-C7-C8	-2.04	118.33	122.06
7	D	5160	BMA	C6-C5-C4	-2.00	108.32	113.00
6	B	5151	NAG	O7-C7-N2	2.00	125.77	121.92
5	A	5168	MAN	C1-C2-C3	2.00	112.19	109.65
5	A	5155	NAG	C2-N2-C7	2.02	125.89	122.94

Continued on next page...

Continued from previous page...

Mol	Chain	Res	Type	Atoms	Z	Observed(°)	Ideal(°)
4	A	5156	NAG	C6-C5-C4	2.04	117.78	113.00
2	A	5170	MAN	C3-C4-C5	2.05	113.83	110.22
2	A	5158	NAG	C1-O5-C5	2.11	115.08	112.17
2	A	5160	BMA	C1-C2-C3	2.13	112.35	109.65
5	A	5168	MAN	C1-O5-C5	2.18	115.17	112.17
6	C	5160	BMA	C1-O5-C5	2.18	115.17	112.17
7	D	5163	MAN	C1-O5-C5	2.20	115.20	112.17
4	D	5156	NAG	C4-C3-C2	2.20	114.24	111.02
2	D	5170	MAN	C1-O5-C5	2.23	115.23	112.17
2	D	5153	BMA	C1-C2-C3	2.34	112.62	109.65
4	D	5154	NAG	C2-N2-C7	2.37	126.40	122.94
7	D	5158	NAG	C1-C2-N2	2.56	114.86	110.49
5	A	5167	MAN	C1-O5-C5	2.75	115.95	112.17
4	D	5155	NAG	C1-O5-C5	2.79	116.01	112.17
2	D	5153	BMA	O5-C1-C2	3.21	115.81	110.79
6	C	5158	NAG	C1-O5-C5	3.30	116.71	112.17
2	D	5153	BMA	C3-C4-C5	3.43	116.27	110.22
6	B	5151	NAG	C1-O5-C5	3.50	116.98	112.17
4	B	5173	NAG	C1-O5-C5	3.72	117.30	112.17
4	D	5156	NAG	C1-O5-C5	4.15	117.89	112.17
2	A	5151	NAG	C1-O5-C5	4.76	118.73	112.17
2	D	5153	BMA	C1-O5-C5	7.33	122.27	112.17
4	A	5174	NAG	C1-O5-C5	7.57	122.60	112.17

There are no chirality outliers.

There are no torsion outliers.

All (1) ring outliers are listed below:

Mol	Chain	Res	Type	Atoms
7	D	5164	MAN	C1-C2-C3-C4-C5-O5

No monomer is involved in short contacts.

5.6 Ligand geometry

4 ligands are modelled in this entry.

In the following table, the Counts columns list the number of bonds (or angles) for which Mogul statistics could be retrieved, the number of bonds (or angles) that are observed in the model and the number of bonds (or angles) that are defined in the chemical component dictionary. The Link column lists molecule types, if any, to which the group is linked. The Z score for a bond length

(or angle) is the number of standard deviations the observed value is removed from the expected value. A bond length (or angle) with $|Z| > 2$ is considered an outlier worth inspection. RMSZ is the root-mean-square of all Z scores of the bond lengths (or angles).

Mol	Type	Chain	Res	Link	Bond lengths			Bond angles		
					Counts	RMSZ	$\# Z > 2$	Counts	RMSZ	$\# Z > 2$
3	NAG	A	5157	1	14,14,15	0.47	0	15,19,21	0.90	0
3	NAG	A	5180	1	14,14,15	0.55	0	15,19,21	1.20	1 (6%)
3	NAG	B	5156	1	14,14,15	0.41	0	15,19,21	0.93	0
3	NAG	D	5157	1	14,14,15	0.50	0	15,19,21	1.27	1 (6%)

In the following table, the Chirals column lists the number of chiral outliers, the number of chiral centers analysed, the number of these observed in the model and the number defined in the chemical component dictionary. Similar counts are reported in the Torsion and Rings columns. '-' means no outliers of that kind were identified.

Mol	Type	Chain	Res	Link	Chirals	Torsions	Rings
3	NAG	A	5157	1	-	0/6/23/26	0/1/1/1
3	NAG	A	5180	1	-	0/6/23/26	0/1/1/1
3	NAG	B	5156	1	-	0/6/23/26	0/1/1/1
3	NAG	D	5157	1	-	0/6/23/26	0/1/1/1

There are no bond length outliers.

All (2) bond angle outliers are listed below:

Mol	Chain	Res	Type	Atoms	Z	Observed(°)	Ideal(°)
3	D	5157	NAG	O5-C1-C2	-2.93	107.40	111.47
3	A	5180	NAG	C4-C3-C2	3.40	116.00	111.02

There are no chirality outliers.

There are no torsion outliers.

There are no ring outliers.

No monomer is involved in short contacts.

5.7 Other polymers [i](#)

There are no such residues in this entry.

5.8 Polymer linkage issues [i](#)

There are no chain breaks in this entry.

6 Fit of model and data

6.1 Protein, DNA and RNA chains

In the following table, the column labelled ‘#RSRZ> 2’ contains the number (and percentage) of RSRZ outliers, followed by percent RSRZ outliers for the chain as percentile scores relative to all X-ray entries and entries of similar resolution. The OWAB column contains the minimum, median, 95th percentile and maximum values of the occupancy-weighted average B-factor per residue. The column labelled ‘Q< 0.9’ lists the number of (and percentage) of residues with an average occupancy less than 0.9.

Mol	Chain	Analysed	<RSRZ>	#RSRZ>2	OWAB(Å ²)	Q<0.9
1	A	365/384 (95%)	-0.11	1 (0%) 93 92	13, 18, 26, 43	0
1	B	364/384 (94%)	-0.15	0 100 100	13, 18, 26, 31	0
1	C	358/384 (93%)	1.05	75 (20%) 1 1	20, 33, 44, 49	0
1	D	369/384 (96%)	0.15	13 (3%) 44 39	17, 23, 32, 48	0
All	All	1456/1536 (94%)	0.23	89 (6%) 22 18	13, 21, 39, 49	0

All (89) RSRZ outliers are listed below:

Mol	Chain	Res	Type	RSRZ
1	D	236	ILE	7.8
1	D	238	SER	7.7
1	D	237	GLY	7.0
1	D	239	THR	6.5
1	C	78	SER	6.2
1	D	210	GLY	4.7
1	D	235	GLN	4.5
1	D	211	GLY	4.4
1	C	148	LEU	4.3
1	C	189	THR	4.2
1	C	41	CYS	4.2
1	C	209	THR	4.2
1	C	147	SER	4.1
1	D	212	SER	4.1
1	C	112	GLY	4.1
1	C	321	THR	4.0
1	C	177	THR	3.8
1	C	223	ASP	3.8
1	C	46	SER	3.8
1	C	42	THR	3.7
1	C	159	ASN	3.7

Continued on next page...

Continued from previous page...

Mol	Chain	Res	Type	RSRZ
1	C	146	SER	3.5
1	C	80	PHE	3.5
1	C	182	VAL	3.4
1	C	143	GLN	3.3
1	C	180	GLN	3.3
1	C	47	PRO	3.3
1	C	204	HIS	3.3
1	C	255	THR	3.2
1	C	341	LEU	3.2
1	C	57	CYS	3.2
1	C	44	PRO	3.1
1	C	54	GLN	3.1
1	C	170	LEU	3.1
1	C	48	MET	3.1
1	C	158	THR	3.0
1	C	315	THR	3.0
1	C	224	SER	2.9
1	C	157	ARG	2.9
1	C	241	SER	2.9
1	D	234	PRO	2.9
1	C	162	LEU	2.8
1	C	105	GLN	2.8
1	C	178	SER	2.7
1	C	172	SER	2.7
1	C	175	VAL	2.7
1	C	323	GLY	2.7
1	C	294	TYR	2.7
1	C	333	VAL	2.6
1	C	43	ASN	2.6
1	D	29	PHE	2.6
1	C	210	GLY	2.6
1	C	50	LEU	2.5
1	C	208	THR	2.5
1	C	161	GLN	2.5
1	C	21	TYR	2.5
1	C	149	PRO	2.5
1	C	207	PHE	2.5
1	C	335	MET	2.5
1	D	196	LEU	2.5
1	C	86	PHE	2.4
1	C	77	HIS	2.4
1	C	320	VAL	2.4

Continued on next page...

Continued from previous page...

Mol	Chain	Res	Type	RSRZ
1	C	254	GLY	2.3
1	C	53	PRO	2.3
1	C	289	ILE	2.3
1	C	378	PHE	2.3
1	C	150	THR	2.3
1	C	83	TYR	2.2
1	C	179	VAL	2.2
1	D	249	LEU	2.2
1	A	382	GLY	2.2
1	C	109	TRP	2.2
1	C	211	GLY	2.2
1	C	55	GLN	2.2
1	C	81	VAL	2.2
1	C	354	PRO	2.1
1	D	213	CYS	2.1
1	C	144	ALA	2.1
1	C	328	HIS	2.1
1	C	142	LEU	2.1
1	C	331	ASP	2.1
1	C	37	SER	2.1
1	C	169	ALA	2.1
1	C	45	GLN	2.1
1	C	234	PRO	2.1
1	C	343	ASN	2.0
1	C	79	SER	2.0
1	C	308	TYR	2.0

6.2 Non-standard residues in protein, DNA, RNA chains ⓘ

There are no non-standard protein/DNA/RNA residues in this entry.

6.3 Carbohydrates ⓘ

In the following table, the Atoms column lists the number of modelled atoms in the group and the number defined in the chemical component dictionary. LLDF column lists the quality of electron density of the group with respect to its neighbouring residues in protein, DNA or RNA chains. The B-factors column lists the minimum, median, 95th percentile and maximum values of B factors of atoms in the group. The column labelled 'Q < 0.9' lists the number of atoms with occupancy less than 0.9.

Mol	Type	Chain	Res	Atoms	RSCC	RSR	LLDF	B-factors(\AA^2)	Q<0.9
4	NAG	A	5156	14/15	0.91	0.20	2.91	30,33,42,42	0
6	NAG	B	5152	14/15	0.87	0.15	2.69	40,43,47,48	0
4	NAG	D	5156	14/15	0.87	0.21	2.54	44,49,54,57	0
6	NAG	C	5158	14/15	0.79	0.21	1.88	45,48,52,56	0
4	NAG	D	5154	14/15	0.94	0.17	0.38	36,39,43,43	0
7	NAG	D	5158	14/15	0.92	0.10	-0.08	33,36,38,40	0
6	NAG	B	5151	14/15	0.93	0.09	-0.51	27,29,32,36	0
5	NAG	A	5154	14/15	0.97	0.08	-0.65	24,28,34,35	0
2	NAG	A	5158	14/15	0.95	0.07	-1.13	25,28,30,37	0
2	NAG	D	5151	14/15	0.97	0.11	-1.34	20,23,25,27	0
2	NAG	A	5151	14/15	0.96	0.08	-1.58	23,26,28,30	0
4	NAG	B	5158	14/15	0.96	0.08	-2.42	23,26,28,31	0
5	MAN	A	5167	11/12	0.79	0.32	-	72,73,74,74	0
4	NAG	D	5155	14/15	0.88	0.20	-	46,48,52,52	0
6	BMA	B	5153	11/12	0.73	0.23	-	52,54,55,56	0
7	MAN	D	5163	11/12	0.85	0.25	-	59,60,60,61	0
2	MAN	A	5170	11/12	0.86	0.24	-	57,59,61,61	0
4	NAG	B	5159	14/15	0.93	0.11	-	35,37,41,45	0
2	MAN	D	5170	11/12	0.84	0.19	-	49,50,51,53	0
2	NAG	A	5152	14/15	0.93	0.09	-	30,32,37,42	0
2	BMA	D	5153	11/12	0.78	0.21	-	44,48,51,53	0
7	NAG	D	5159	14/15	0.91	0.15	-	36,42,48,49	0
2	BMA	A	5153	11/12	0.80	0.26	-	47,52,54,56	0
6	NAG	C	5159	14/15	0.77	0.27	-	61,63,67,71	0
2	MAN	A	5161	11/12	0.71	0.33	-	67,68,69,70	0
4	NAG	D	5174	14/15	0.72	0.39	-	60,62,63,64	0
7	MAN	D	5162	11/12	0.85	0.18	-	42,46,48,50	0
5	NAG	A	5155	14/15	0.90	0.13	-	38,43,49,56	0
5	MAN	A	5168	11/12	0.75	0.41	-	72,74,75,76	0
5	BMA	A	5166	11/12	0.64	0.23	-	62,67,70,70	0
7	MAN	D	5164	11/12	0.72	0.39	-	66,69,70,70	0
7	MAN	D	5161	11/12	0.84	0.17	-	47,49,52,57	0
6	BMA	C	5160	11/12	0.45	0.30	-	74,75,75,75	0
4	NAG	A	5174	14/15	0.79	0.33	-	46,49,51,51	0
4	NAG	B	5173	14/15	0.74	0.48	-	61,63,66,67	0
7	BMA	D	5160	11/12	0.81	0.21	-	52,55,58,62	0
2	NAG	A	5159	14/15	0.88	0.20	-	40,44,49,55	0
2	BMA	A	5160	11/12	0.78	0.36	-	58,61,64,65	0
4	NAG	B	5157	14/15	0.81	0.31	-	45,51,54,58	0
2	NAG	D	5152	14/15	0.94	0.09	-	26,29,33,39	0

6.4 Ligands [i](#)

In the following table, the Atoms column lists the number of modelled atoms in the group and the number defined in the chemical component dictionary. LLDF column lists the quality of electron density of the group with respect to its neighbouring residues in protein, DNA or RNA chains. The B-factors column lists the minimum, median, 95th percentile and maximum values of B factors of atoms in the group. The column labelled 'Q< 0.9' lists the number of atoms with occupancy less than 0.9.

Mol	Type	Chain	Res	Atoms	RSCC	RSR	LLDF	B-factors(Å ²)	Q<0.9
3	NAG	B	5156	14/15	0.80	0.25	11.62	42,48,51,52	0
3	NAG	A	5180	14/15	0.64	0.40	-	56,62,64,65	0
3	NAG	D	5157	14/15	0.88	0.23	-	44,50,53,53	0
3	NAG	A	5157	14/15	0.87	0.33	-	50,56,58,59	0

6.5 Other polymers [i](#)

There are no such residues in this entry.